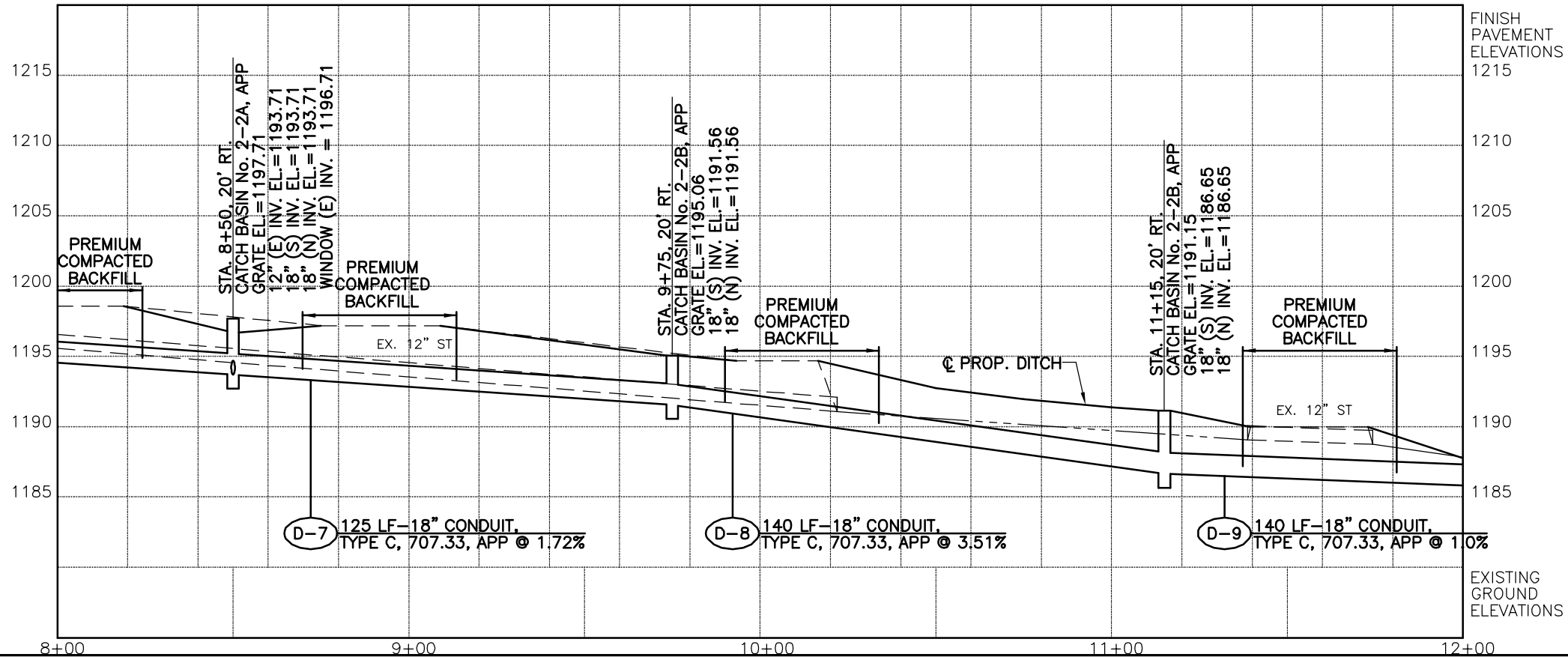
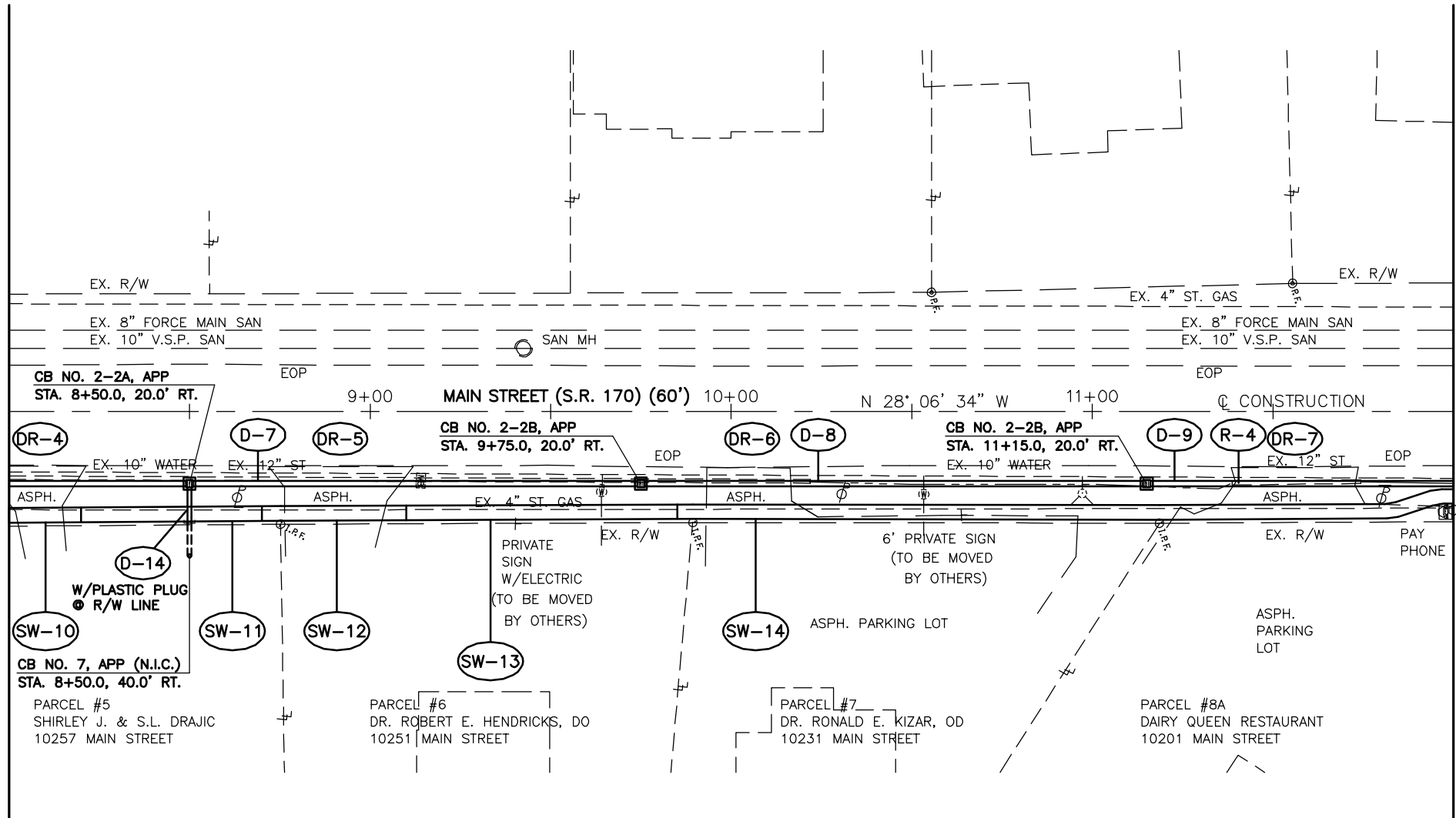


MATCH LINE STA. 8+00

MATCH LINE STA. 12+00



NOTE:
FOR ADDITIONAL QUANTITIES RELATING TO THE SIDEWALK
INSTALLATION SW-14, SEE SHEET No. 22.

REF NO.	STATION		SIDE	ITEM	UNIT	QUANTITY	REMARKS
	FROM	TO					
SW-10	8+00	8+20	RT	PIPE REMOVED, 24\"/>			
SW-11	8+20	8+70	RT		FT	80	
SW-12	8+70	9+10	RT		FT	160	
SW-13	9+10	9+85	RT		FT	300	
SW-14	9+85	12+00	RT		FT	860	
D-7	8+50	9+75	RT		FT	125	
D-8	9+75	11+15	RT		FT	140	
D-9	11+15	12+55	RT		FT	140	
D-14	8+50	8+50	RT		FT	10	
R-4	11+39	11+75	RT		FT	36	
TOTALS CARRIED TO GENERAL SUMMARY						36	
604				CATCH BASIN, No. 2-2B, A.P.P.	EACH	2	
604				CATCH BASIN, No. 2-2A, A.P.P.	EACH	1	
603				12\"/>			
603				18\"/>			
608				4\"/>			
608				8\"/>			
TOTALS						1,100	

MAH-170-5.22

PLAN AND PROFILE
STA. 8+00 TO STA. 12+00

CALCULATED 0

CHECKED

