

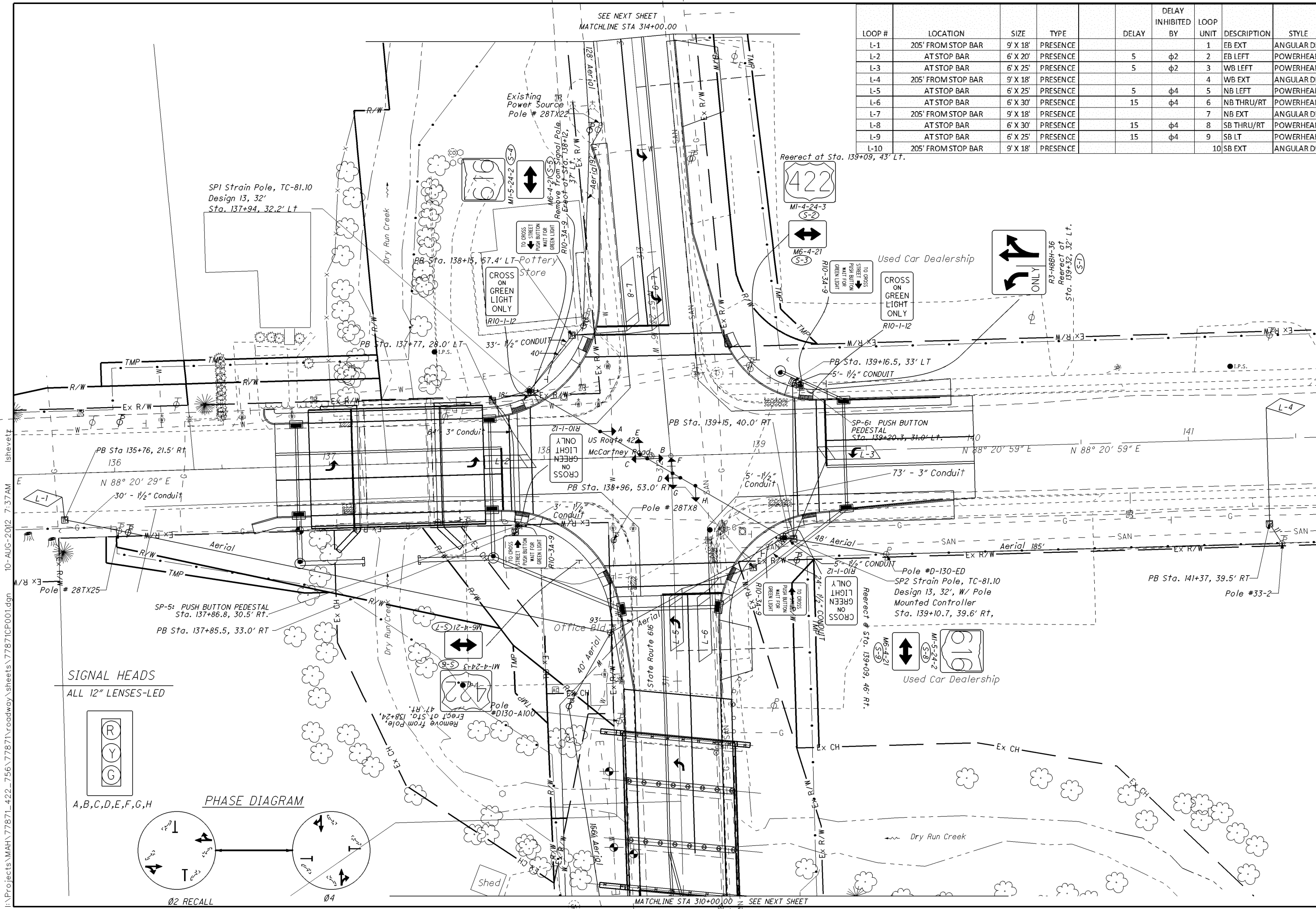
SEE NEXT SHEET
MATCHLINE STA 314+00.00

| LOOP # | LOCATION | SIZE | TYPE | DELAY | DELAY INHIBITED BY | LOOP UNIT | DESCRIPTION | STYLE |
|--------|--------------------|----------|----------|-------|--------------------|-----------|-------------|------------|
| L-1 | 205' FROM STOP BAR | 9' X 18' | PRESENCE | | | 1 | EB EXT | ANGULAR DD |
| L-2 | AT STOP BAR | 6' X 20' | PRESENCE | 5 | φ2 | 2 | EB LEFT | POWERHEAD |
| L-3 | AT STOP BAR | 6' X 25' | PRESENCE | 5 | φ2 | 3 | WB LEFT | POWERHEAD |
| L-4 | 205' FROM STOP BAR | 9' X 18' | PRESENCE | | | 4 | WB EXT | ANGULAR DD |
| L-5 | AT STOP BAR | 6' X 25' | PRESENCE | 5 | φ4 | 5 | NB LEFT | POWERHEAD |
| L-6 | AT STOP BAR | 6' X 30' | PRESENCE | 15 | φ4 | 6 | NB THRU/RT | POWERHEAD |
| L-7 | 205' FROM STOP BAR | 9' X 18' | PRESENCE | | | 7 | NB EXT | ANGULAR DD |
| L-8 | AT STOP BAR | 6' X 30' | PRESENCE | 15 | φ4 | 8 | SB THRU/RT | POWERHEAD |
| L-9 | AT STOP BAR | 6' X 25' | PRESENCE | 15 | φ4 | 9 | SB LT | POWERHEAD |
| L-10 | 205' FROM STOP BAR | 9' X 18' | PRESENCE | | | 10 | SB EXT | ANGULAR DD |



SIGNAL PLAN
SR 422 & SR 616

MAH-422/616-
7.54/5.86



SPI Strain Pole, TC-81.10
Design 13, 32'
Sta. 137+94, 32.2' Lt

PB Sta. 138+15, 57.4' LT
Pottery Store

Reerect at Sta. 139+09, 43' LT.
422

Used Car Dealership

CROSS ON GREEN LIGHT ONLY
R10-1-12

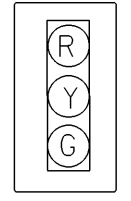
PB Sta. 139+16.5, 33' LT
5' - 1/2" Conduit

SP-6: PUSH BUTTON PEDESTAL
Sta. 139+20.3, 31.0' Lt.

Pole #D-130-ED
SP2 Strain Pole, TC-81.10
Design 13, 32', w/ Pole Mounted Controller
Sta. 139+10.7, 39.6' Rt.

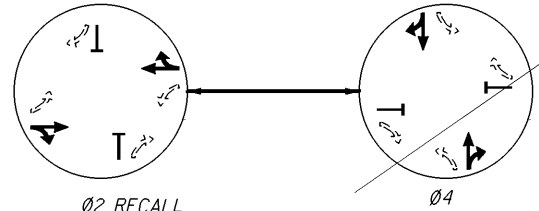
Used Car Dealership

SIGNAL HEADS
ALL 12" LENSES-LED



A,B,C,D,E,F,G,H

PHASE DIAGRAM



MATCHLINE STA 310+00.00 SEE NEXT SHEET

I:\Projects\MAH\77871_422_756\77871\roadway\sheet\77871CP001.dgn 10-AUG-2012 7:37 AM lshevetz