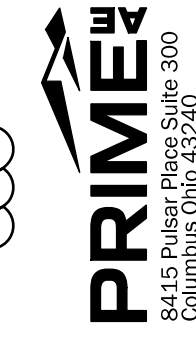


SHEET No.	REFERENCE No.	LOCATION	STATION to STATION		SIDE	202									
						WALK REMOVED SF	TRAFFIC ISLAND REMOVED SY	CURB REMOVED FT	CURB REMOVED, AS PER PLAN FT	CURB AND GUTTER REMOVED FT	PIPE REMOVED, 24" DIAMETER AND UNDER FT	GUARDRAIL REMOVED FT	CATCH BASIN REMOVED EA	PAVEMENT REMOVED SY	
P.152	R-44	☉ CONST. US 224	975+43.94	-	RT.						5		1	4	
P.152	R-45	☉ CONST. US 224	974+23.90	981+97.07	LT.			774							
P.152	TI-9	☉ CONST. US 224	973+68.91	981+48.07	LT.									676	
P.151	R-46	☉ CONST. US 224	979+87.86	982+30.50	RT.			242							
P.151	R-47	☉ CONST. US 224	981+12.22	-	RT.								1		
P.151	R-48	☉ CONST. US 224	981+76.95	-	LT.						5		1		
P.151	TI-12	☉ CONST. US 224	982+15.99	-	LT.									34	
P.152	R-50	☉ CONST. US 224	984+13.46	984+43.83	RT.					37				9	
P.152	R-50A	☉ CONST. US 224	984+19.56	987+78.63	CL				260						
P.152	R-51	☉ CONST. US 224	989+52.32	989+82.17	RT.					30				8	
P.155	R-52	☉ CONST. US 224	990+31.62	990+52.92	RT.					23				6	
P.156	R-53	☉ CONST. US 224	994+55.56	994+74.35	RT.					21				5	
P.157	R-54	☉ CONST. US 224	997+53.10	1000+05.32	CL									373	
P.157	R-55	☉ CONST. US 224	1002+30.42	1002+45.13	RT.			17						4	
P.157	R-56	☉ CONST. US 224	1002+83.83	1002+96.33	RT.			16						4	
P.158	TI-14	☉ CONST. US 224	1004+29.89	1012+57.45	CL									1029	
P.158	R-57		NOT USED												
P.158	R-58	☉ CONST. US 224	1007+45.14	1008+40.48	LT			91		95				134	
P.160	R-59	☉ CONST. US 224	1012+94.69	1013+95.07	LT			63		41				111	
P.160	R-60	☉ CONST. US 224	1013+95.07	1015+89.96	LT			273		554				425	
P.160	R-60A	☉ CONST. US 224	1014+24.30	1018+08.16					384						
P.160	R-61	☉ CONST. US 224	1016+59.16	1018+42.90	LT			227		554				339	
P.161	R-62	☉ CONST. US 224	1013+04.91	1016+78.21	RT.			416						275	
P.161	R-63	☉ CONST. US 224	1016+85.73	1017+01.55	RT.										
P.161	R-65	☉ CONST. US 224	1017+09.28	1018+80.30	RT.			242		658				193	
P.161	R-66	☉ CONST. US 224	1018+12.79	-	LT.					5		1			
P.161	R-67	☉ CONST. US 224	1018+25.64	1018+70.68	RT.	252									
P.161	R-68	☉ CONST. US 224	1019+37.63	1020+70.00	LT.					212				52	
P.161	R-69	☉ CONST. US 224	1019+52.29	1019+91.46	RT.	178									
P.161	R-70	☉ CONST. US 224	1019+55.65	-	LT.					5		1			
P.161	R-71	☉ CONST. US 224 ☉ CONST. SOUTH AVE.	206+91.30	1021+98.34	RT.					625				841	
P.161	R-72	☉ CONST. US 224	1021+20.62	1021+47.63	LT.			111						159	
P.161	R-73	☉ CONST. US 224	1021+47.63	1023+78.98	LT.					231				55	
P.162	R-74		NOT USED												
P.162	R-75	☉ CONST. US 224	962+44.75	964+19.47	LT.			195							
P.164	R-78	☉ CONST. SOUTHERN BLVD.	55+11.98	58+41.31	LT.					330					
P.164	R-79	☉ CONST. SOUTHERN BLVD.	58+19.82	58+58.33	RT.						41				
P.164	R-80	☉ CONST. SOUTHERN BLVD.	58+57.78	-	LT.							1			
P.164	R-81	☉ CONST. SOUTHERN BLVD.	59+78.61	62+42.96	RT.					387				614	
P.164	R-82	☉ CONST. US 224	961+17.86	-	LT.							1			
P.165	R-83	☉ CONST. SOUTHERN BLVD.	62+53.16	-	RT.							1			
P.170	R-84	☉ CONST. TIFFANY BLVD.	10+63.67	14+62.00	LT. / RT.			218						842	
TOTALS CARRIED TO GENERAL SUMMARY						430	230	2667	644	3468	350	41	8	6193	

REMOVAL SUBSUMMARY

DESIGN AGENCY

 8415 Pulaski Place, Suite 300
 Columbus, Ohio 43240

DESIGNER
 MGW

REVIEWER
 SA 03/27/26

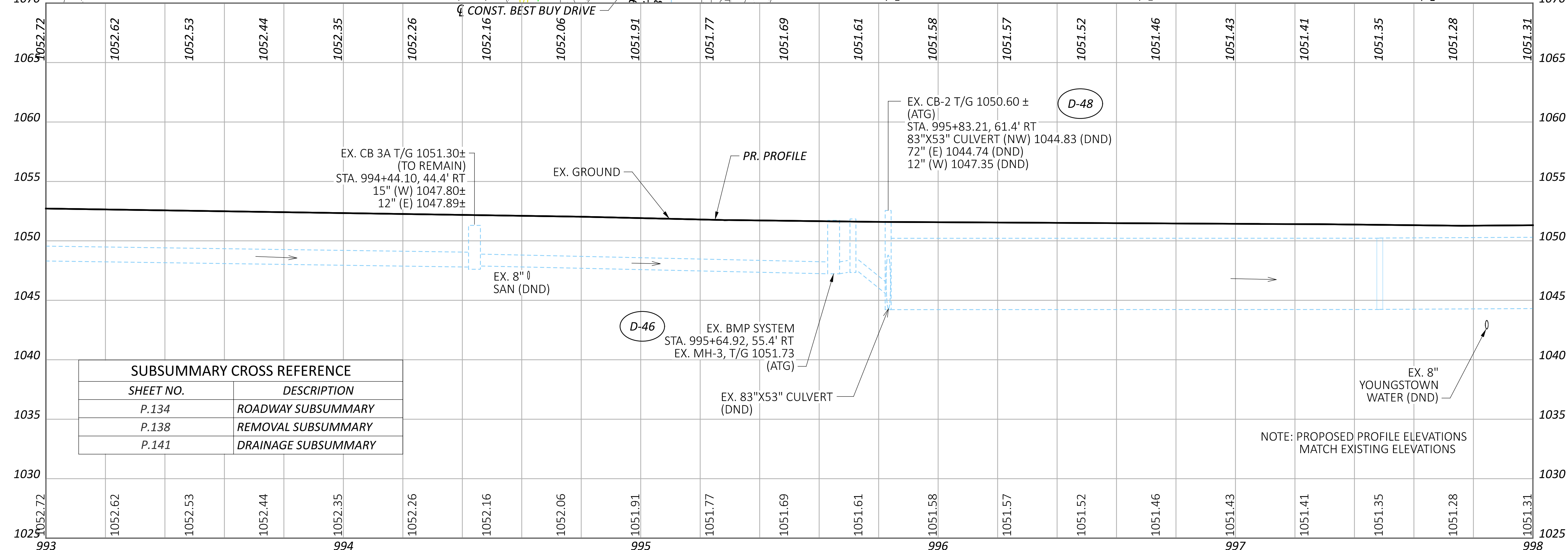
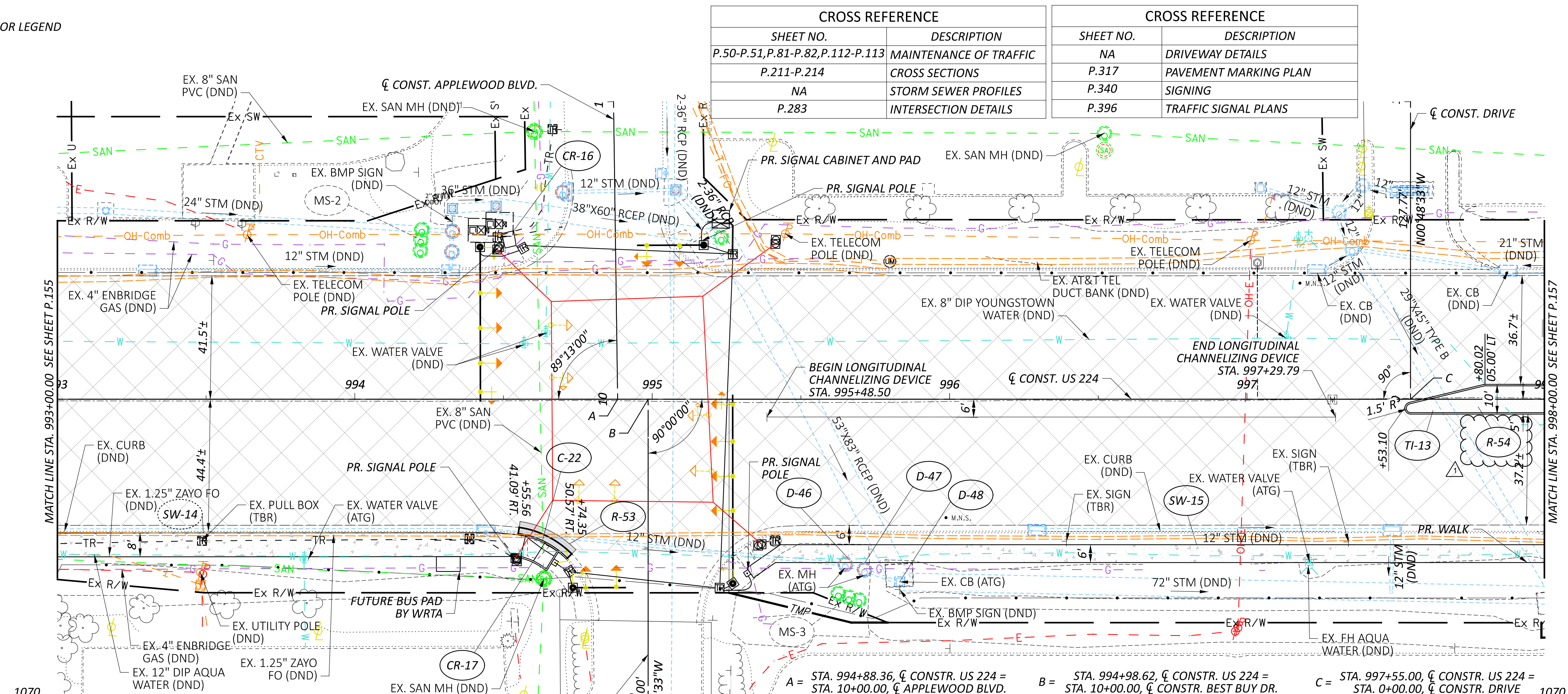
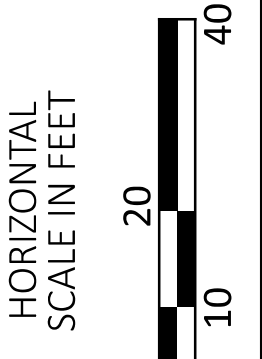
PROJECT ID
 115790

SHEET TOTAL
 P.138 439

- SEE SHEET P.145 FOR LEGEND

CROSS REFERENCE	
SHEET NO.	DESCRIPTION
P.50-P.51, P.81-P.82, P.112-P.113	MAINTENANCE OF TRAFFIC
P.211-P.214	CROSS SECTIONS
NA	STORM SEWER PROFILES
P.283	INTERSECTION DETAILS

CROSS REFERENCE	
SHEET NO.	DESCRIPTION
NA	DRIVEWAY DETAILS
P.317	PAVEMENT MARKING PLAN
P.340	SIGNING
P.396	TRAFFIC SIGNAL PLANS



SUBSUMMARY CROSS REFERENCE	
SHEET NO.	DESCRIPTION
P.134	ROADWAY SUBSUMMARY
P.138	REMOVAL SUBSUMMARY
P.141	DRAINAGE SUBSUMMARY

A = STA. 994+88.36, ζ CONSTR. US 224 = STA. 10+00.00, ζ APPLEWOOD BLVD. B = STA. 994+98.62, ζ CONSTR. US 224 = STA. 10+00.00, ζ CONSTR. BEST BUY DR. C = STA. 997+55.00, ζ CONSTR. US 224 = STA. 0+00.00, ζ CONSTR. DRIVE

NOTE: PROPOSED PROFILE ELEVATIONS MATCH EXISTING ELEVATIONS

MAH-224-17.72

MODEL: 115790_GPO12.PAPER: 34x22 (in.) DATE: 6/24/2026 TIME: 1:40:40 PM PLOTDRW: OHDOT_PDF.plt USER: macen.whitsett@primetm.com WORKSPACE: OHDOTCE02 WORKSET: 115790_PRODUCT: OpenRoadsDesigner 24.00.02.25

PLAN AND PROFILE - U.S. 224
STA. 993+00.00 TO STA. 998+00.00

DESIGN AGENCY
PRIME
8415 Pulaski Plaza, Suite 300
Columbus, Ohio 43240

DESIGNER
MGW

REVIEWER
SA 03/27/26

PROJECT ID
115790

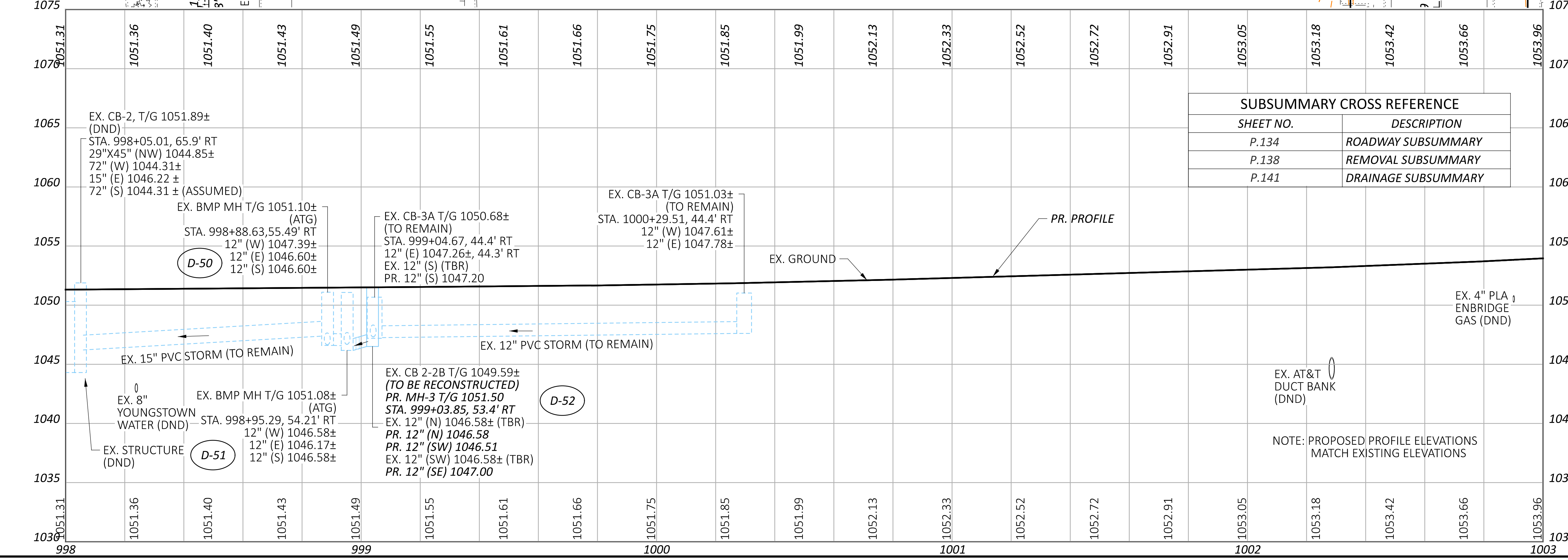
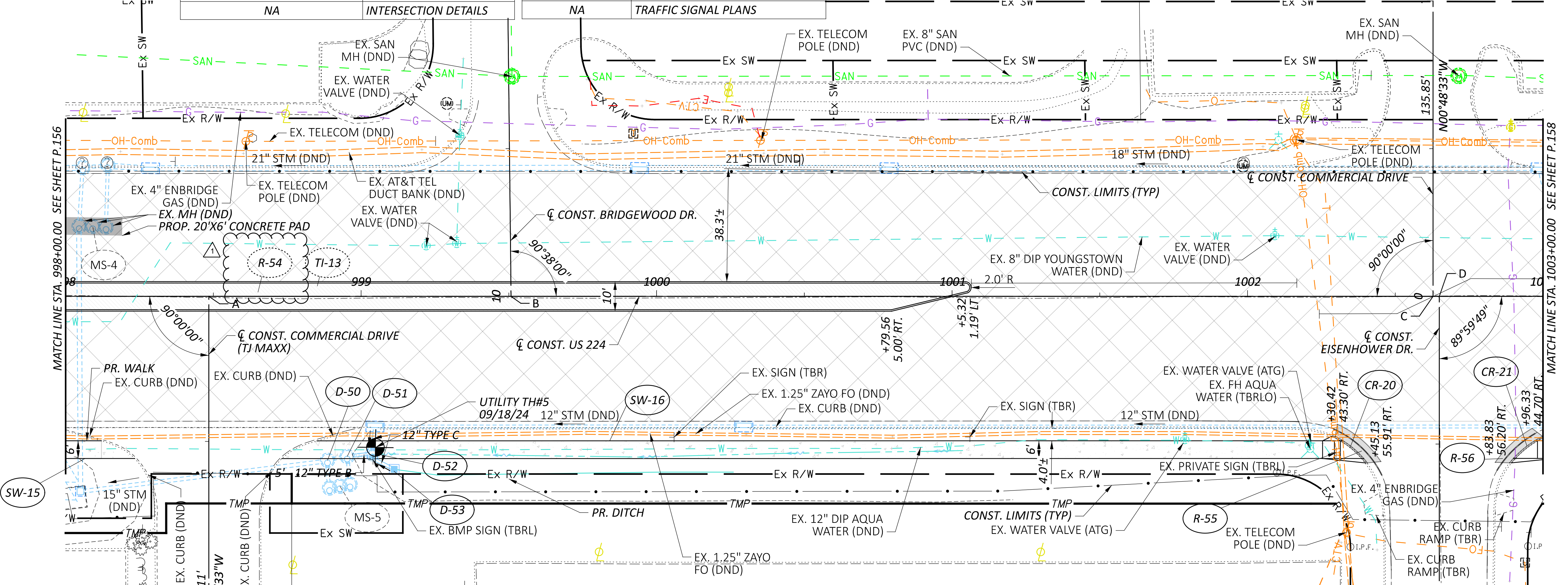
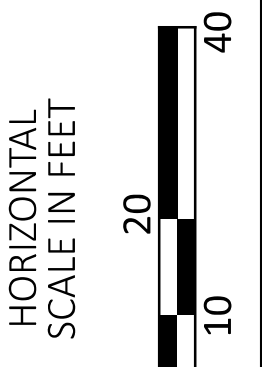
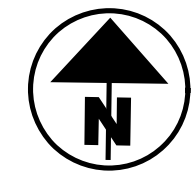
SHEET TOTAL
P.156 439

- SEE SHEET P.145 FOR LEGEND

CROSS REFERENCE	
SHEET NO.	DESCRIPTION
P.51-P.52, P.82-P.83, P.113-P.114	MAINTENANCE OF TRAFFIC
P.214-P.217	CROSS SECTIONS
NA	STORM SEWER PROFILES
NA	INTERSECTION DETAILS

CROSS REFERENCE	
SHEET NO.	DESCRIPTION
NA	DRIVEWAY DETAILS
P.318	PAVEMENT MARKING PLAN
P.341	SIGNING
NA	TRAFFIC SIGNAL PLANS

A = STA. 998+48.43, ϕ CONSTR. US 224 = STA. 1+99.11, ϕ CONSTR. DRIVE
 B = STA. 999+50.74, ϕ CONSTR. US 224 = STA. 10+00.00, ϕ CONSTR. BRIDGEWOOD DR.
 C = STA. 1002+62.82, ϕ CONSTR. US 224 = STA. 0+00.00, ϕ CONSTR. COMMERCIAL DRIVE
 D = STA. 1002+64.92, ϕ CONSTR. US 224 = STA. 10+00.00, ϕ CONSTR. EISENHOWER DR.



SUBSUMMARY CROSS REFERENCE	
SHEET NO.	DESCRIPTION
P.134	ROADWAY SUBSUMMARY
P.138	REMOVAL SUBSUMMARY
P.141	DRAINAGE SUBSUMMARY

NOTE: PROPOSED PROFILE ELEVATIONS MATCH EXISTING ELEVATIONS

MAH-224-17.72

MODEL: 115790_GP013 PAPER SIZE: 34x42 (in.) DATE: 6/24/2026 TIME: 1:42:02 PM PLTDR: OHDOT_PDF.plt USER: macen.whittrick@primet.com WORKSPACE: OHDOT_CEO2 WORKSET: 115790_PRODUCT: OpenRoadsDesigner 24.00.02.25

PLAN AND PROFILE - U.S. 224
 STA. 998+00.00 TO STA. 1003+00.00

DESIGN AGENCY

 8415 Pulaski Plaza, Suite 300
 Columbus, Ohio 43240

DESIGNER
 MGW

REVIEWER
 SA 03/27/26

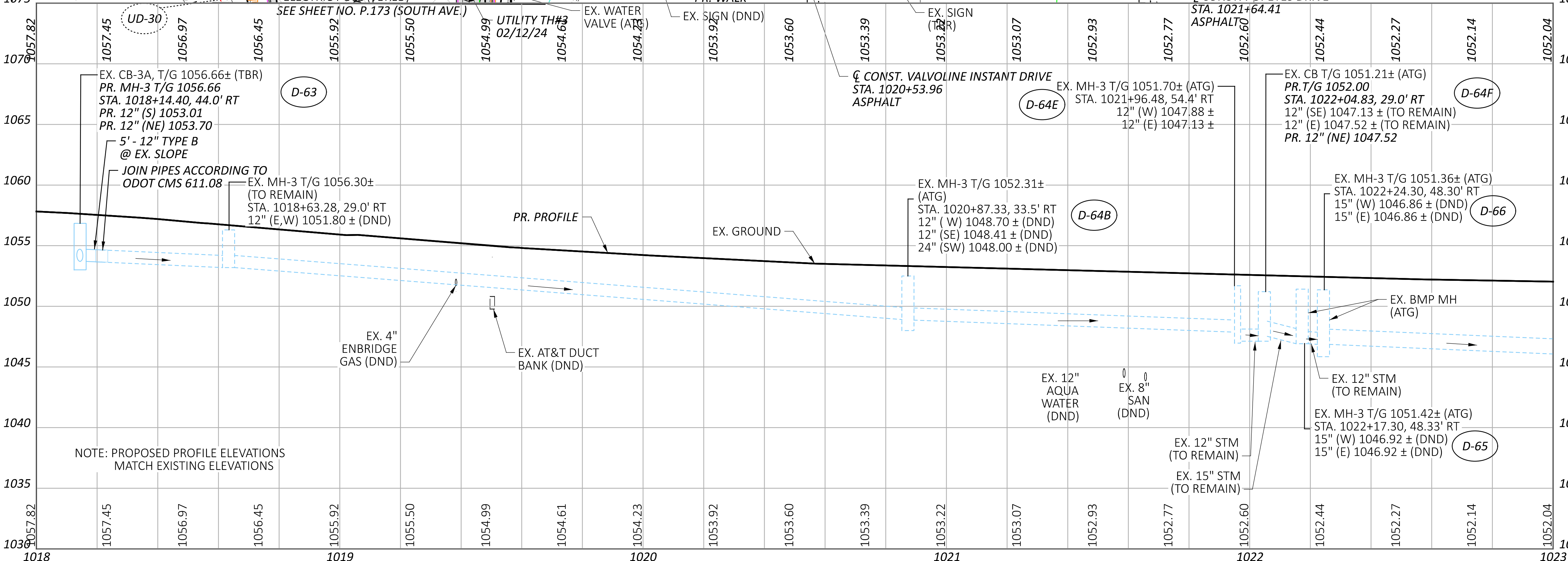
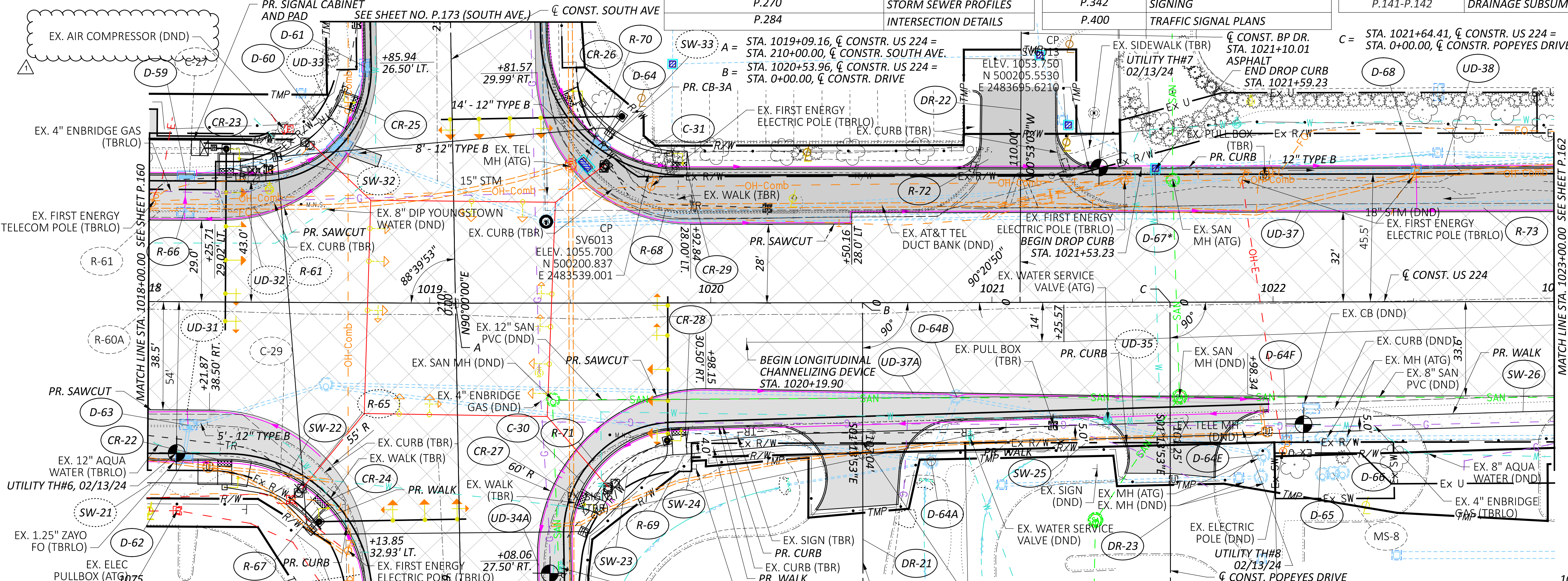
PROJECT ID
 115790

SHEET TOTAL
 P.157 439

MAH-224-17.72

MODEL: 115790_GPO17 PAPER SIZE: 34x22 (in.) DATE: 6/26/2026 TIME: 3:17:18 PM PLTDRV: OHDOT_PDF.plt PENTBL: OHDOT_UTPen.tbl USER: macen.whitrett@primeng.com WORKSPACE: OHDOT_CV02 WORKSET: 115790_PRODUCT: OpenRoadsDesigner 24.00.02.25
pw:\ohdot-pw.bentley.com\ohdot-pw-02\Documents\01.Active Projects\District 04\Mahoning\115790\402.Engineering_Prime\Engineering_Roadway\Sheets\115790_GPO17.dgn

- SEE SHEET P.145 FOR LEGEND
* D-67 SHALL BE ADJUSTED TO GRADE WITH A NEW CATCH BASIN GRATE, TYPE D TO BE FURNISHED AND INSTALLED.

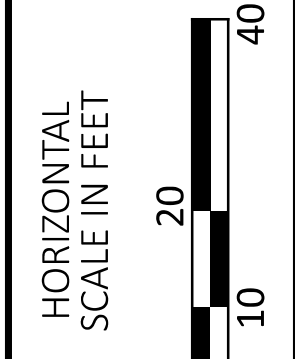
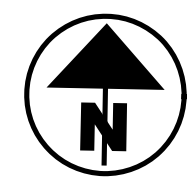


NOTE: PROPOSED PROFILE ELEVATIONS MATCH EXISTING ELEVATIONS

CROSS REFERENCE	
SHEET NO.	DESCRIPTION
P.55-P.56,P.63,P.86-P.88,P.117-P.118,P.90	MAINTENANCE OF TRAFFIC
P.229-P.232,P.264	CROSS SECTIONS
P.270	STORM SEWER PROFILES
P.284	INTERSECTION DETAILS

CROSS REFERENCE	
SHEET NO.	DESCRIPTION
P.292,P.299	DRIVEWAY DETAILS
P.320	PAVEMENT MARKING PLAN
P.342	SIGNING
P.400	TRAFFIC SIGNAL PLANS

SUBSUMMARY CROSS REFERENCE	
SHEET NO.	DESCRIPTION
P.134	ROADWAY SUBSUMMARY
P.138	REMOVAL SUBSUMMARY
P.141-P.142	DRAINAGE SUBSUMMARY



PLAN AND PROFILE - U.S. 224
STA. 1018+00.00 TO STA. 1023+00.00

DESIGN AGENCY
PRIME
8415 Pulaski Pike, Suite 300
Columbus, Ohio 43246

DESIGNER
MGW

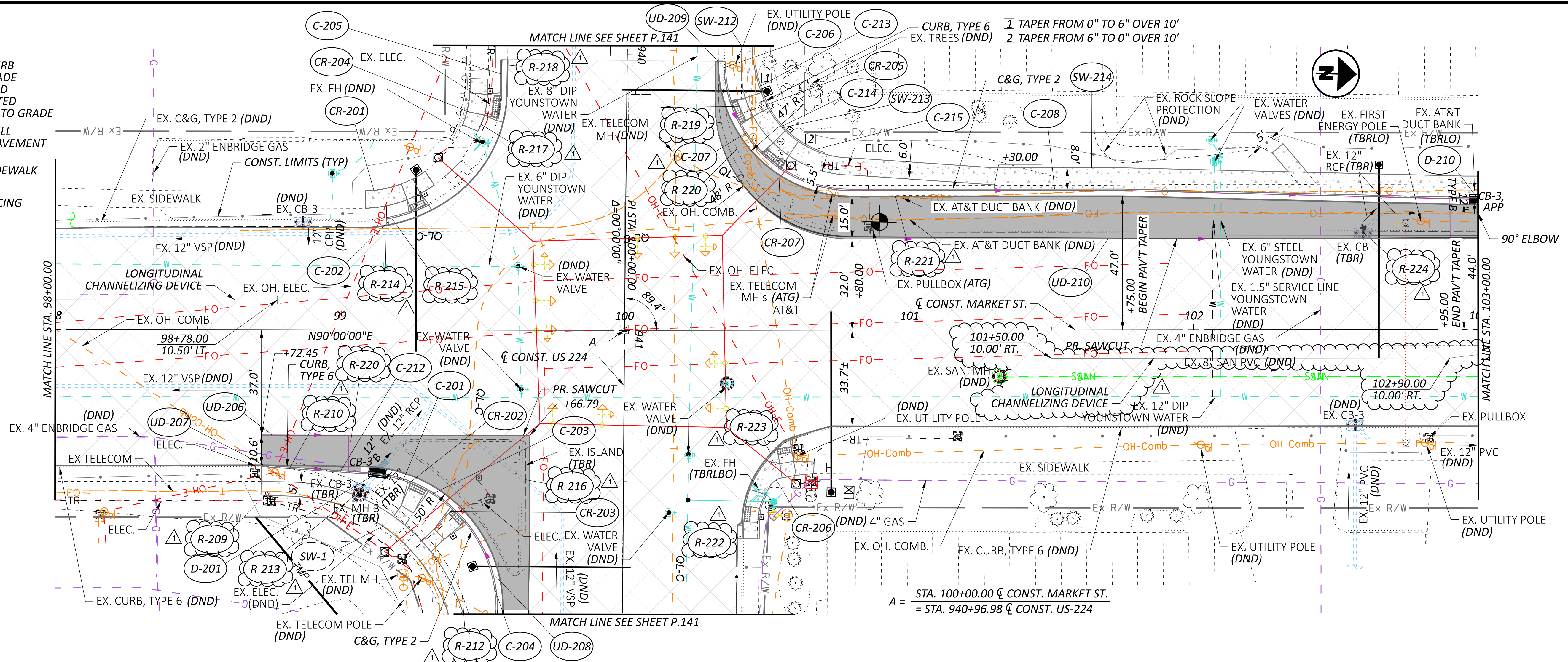
REVIEWER
SA 03/27/26

PROJECT ID
115790

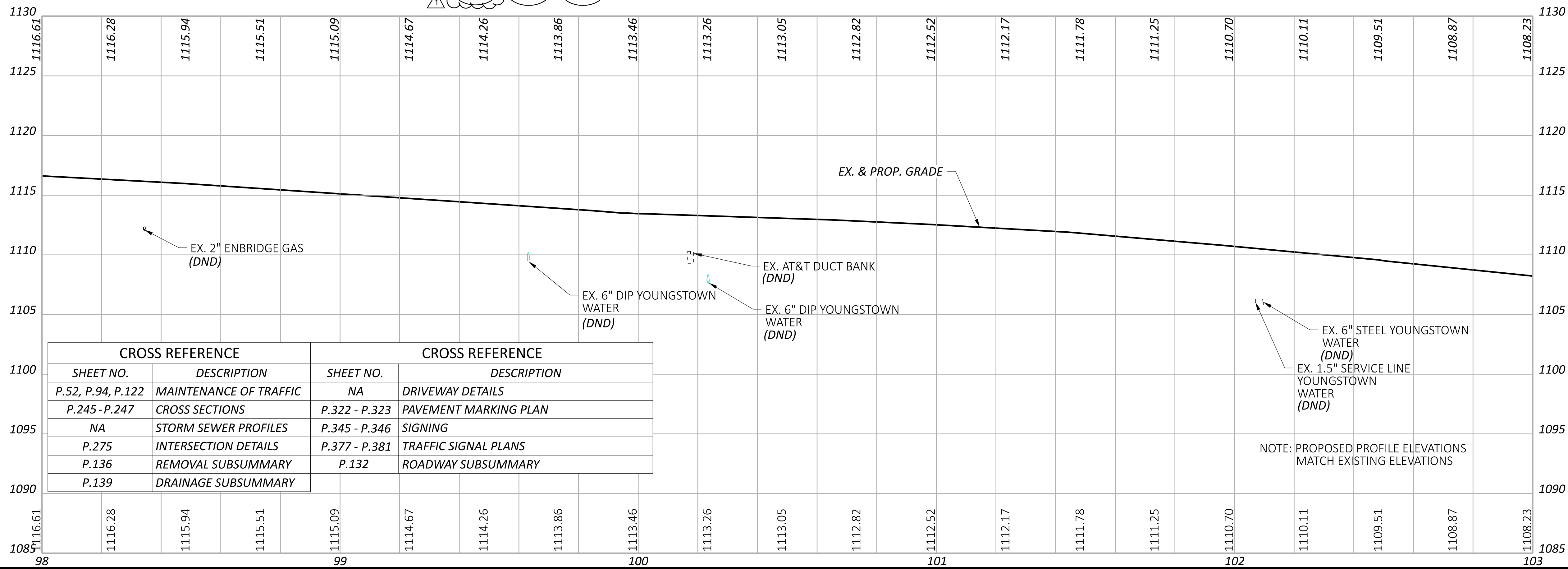
SHEET TOTAL
P.161 439

LEGEND
 DND - DO NOT DISTURB
 ATG - ADJUST TO GRADE
 TBR - TO BE REMOVED
 TBRL - TO BE RELOCATED
 RTG - RECONSTRUCT TO GRADE

PROP. FULL DEPTH PAVEMENT
 PROP. SIDEWALK
 RESURFACING

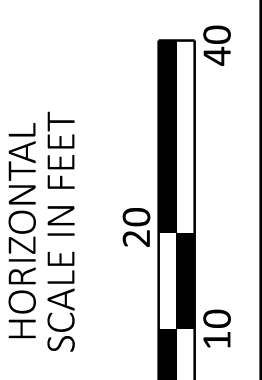


$$A = \frac{\text{STA. } 100+00.00 \text{ } \&C \text{ CONST. MARKET ST.}}{\text{STA. } 940+96.98 \text{ } \&C \text{ CONST. US-224}}$$



CROSS REFERENCE		CROSS REFERENCE	
SHEET NO.	DESCRIPTION	SHEET NO.	DESCRIPTION
P.52, P.94, P.122	MAINTENANCE OF TRAFFIC	NA	DRIVEWAY DETAILS
P.245 - P.247	CROSS SECTIONS	P.322 - P.323	PAVEMENT MARKING PLAN
NA	STORM SEWER PROFILES	P.345 - P.346	SIGNING
P.275	INTERSECTION DETAILS	P.377 - P.381	TRAFFIC SIGNAL PLANS
P.136	REMOVAL SUBSUMMARY	P.132	ROADWAY SUBSUMMARY
P.139	DRAINAGE SUBSUMMARY		

NOTE: PROPOSED PROFILE ELEVATIONS MATCH EXISTING ELEVATIONS



PLAN AND PROFILE - MARKET STREET
 STA. 98+00.00 TO STA. 103+00.00

DESIGN AGENCY
TRANSYSTEMS
 400 W. NATIONWIDE BLDG., STE 225
 COLUMBUS, OHIO 43216

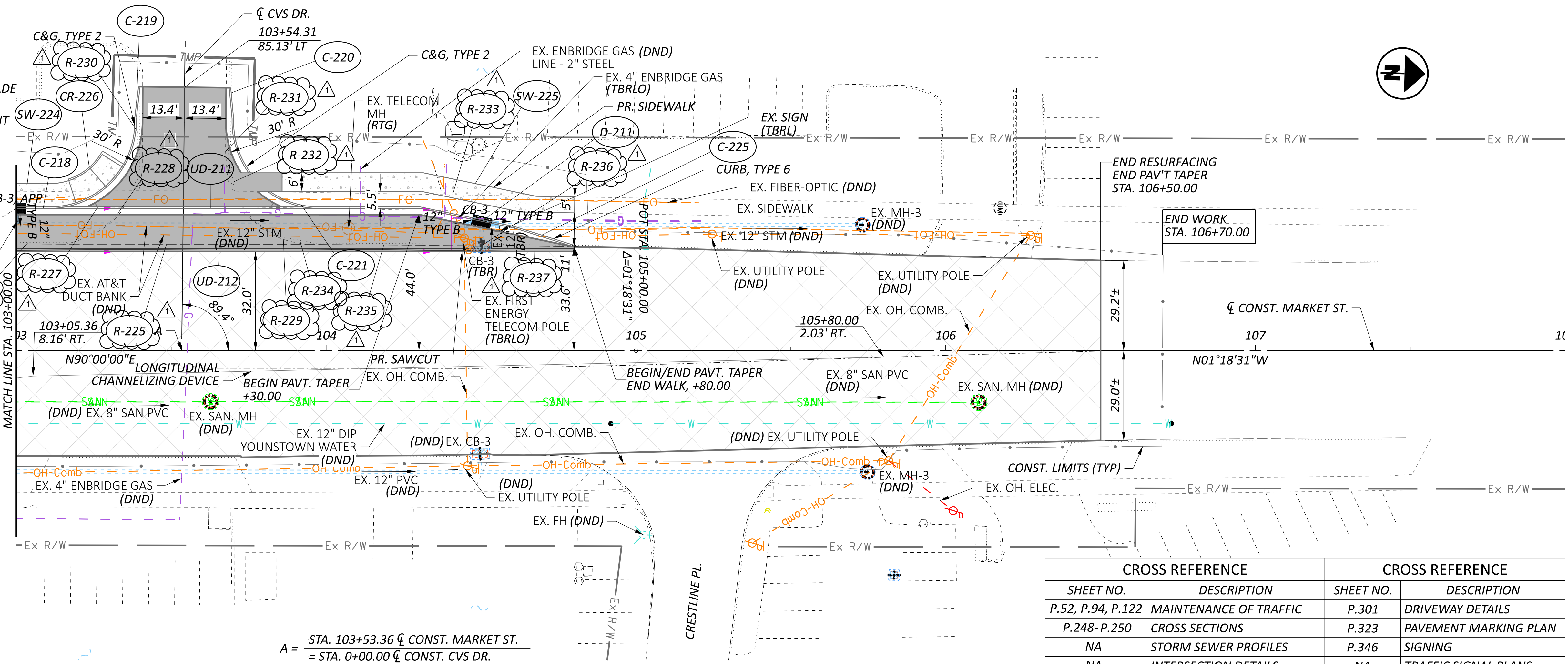
DESIGNER
 MSW

REVIEWER
 SS 03/27/26

PROJECT ID
 115790

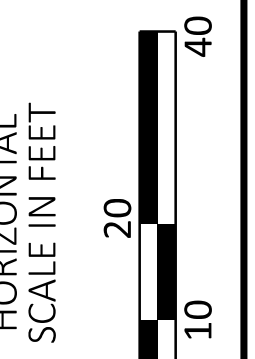
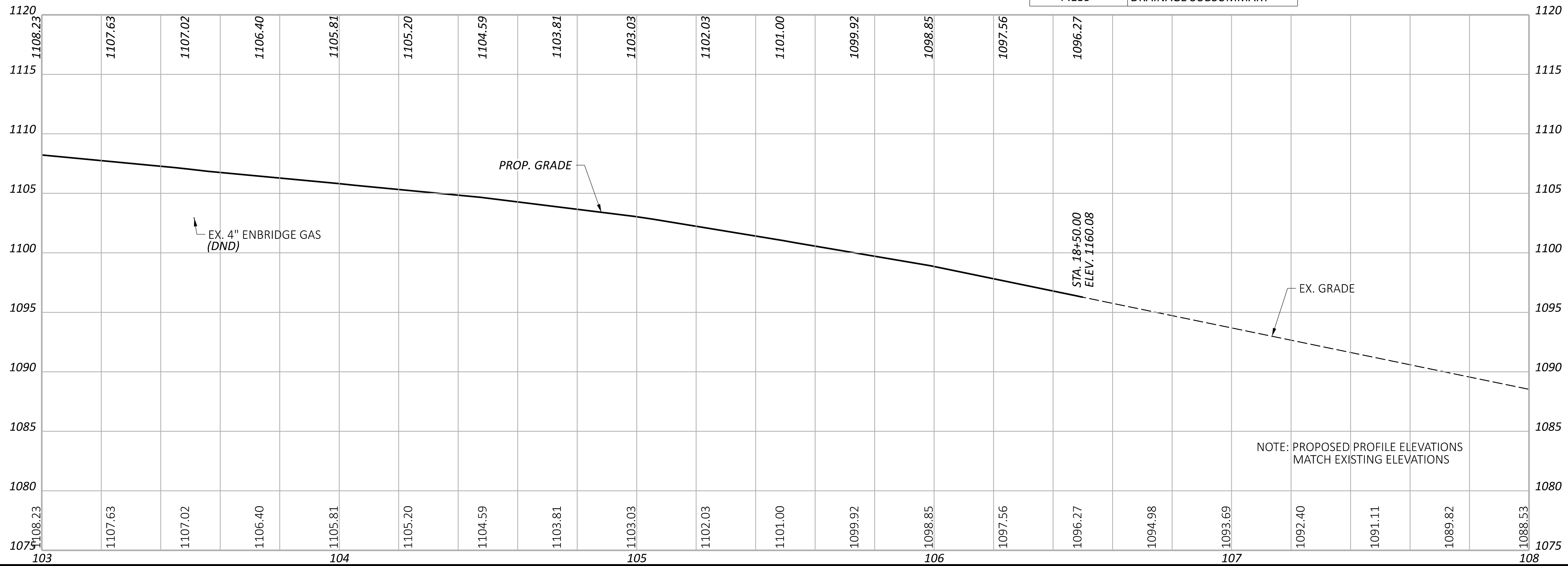
SHEET TOTAL
 P.166 439

- LEGEND**
- DND - DO NOT DISTURB
 - ATG - ADJUST TO GRADE
 - TBR - TO BE REMOVED
 - TBRLO - TO BE RELOCATED
 - RTG - RECONSTRUCT TO GRADE
- PROP. FULL DEPTH PAVEMENT
 - PROP. SIDEWALK
 - RESURFACING



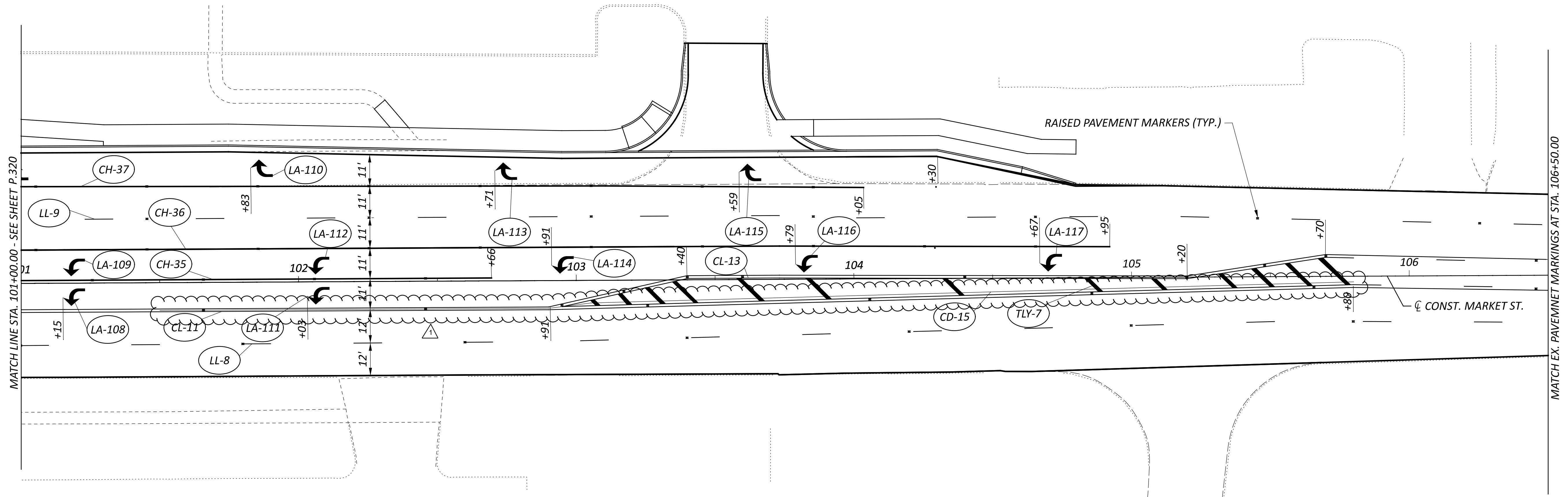
$$A = \frac{\text{STA. } 103+53.36 \text{ } \zeta \text{ CONST. MARKET ST.}}{\text{STA. } 0+00.00 \text{ } \zeta \text{ CONST. CVS DR.}}$$

CROSS REFERENCE		CROSS REFERENCE	
SHEET NO.	DESCRIPTION	SHEET NO.	DESCRIPTION
P.52, P.94, P.122	MAINTENANCE OF TRAFFIC	P.301	DRIVEWAY DETAILS
P.248-P.250	CROSS SECTIONS	P.323	PAVEMENT MARKING PLAN
NA	STORM SEWER PROFILES	P.346	SIGNING
NA	INTERSECTION DETAILS	NA	TRAFFIC SIGNAL PLANS
P.136	REMOVAL SUBSUMMARY	P.132	ROADWAY SUBSUMMARY
P.139	DRAINAGE SUBSUMMARY		



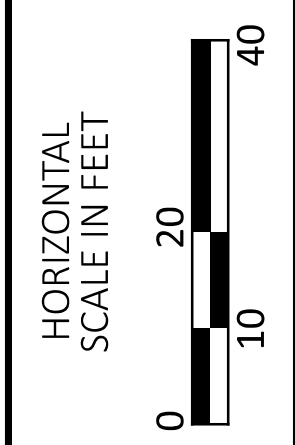
PLAN AND PROFILE - MARKET STREET
 STA. 103+00.00 TO STA. 108+00.00

DESIGN AGENCY	
TRANSYSTEMS 400 W. NATIONWIDE BLD., STE 225 COLUMBUS, OHIO 43216	
DESIGNER	MSW
REVIEWER	SS 03/27/26
PROJECT ID	115790
SHEET	TOTAL
P.167	439



LEGEND

- | | | | |
|-----|---|----|--|
| TLY | ITEM 646- TRANSVERSE/ DIAGONAL LINE, YELLOW | LA | ITEM 646- LANE ARROW |
| CL | ITEM 646- CENTER LINE (DOUBLE SOLID) | LL | ITEM 646- LANE LINE |
| CH | ITEM 646- CHANNELIZING LINE | CD | ITEM 831- LONGITUDINAL CHANNELIZING DEVICE |



PAVEMENT MARKING PLAN - MARKET ST.
 STA. 101+00.00 TO STA. 106+50.00

DESIGN AGENCY	
PRIME 8415 Pulsar Plaza Suite 300 Columbus Ohio 43240	
DESIGNER	AJ
REVIEWER	SA 03/27/26
PROJECT ID	115790
SHEET	TOTAL
P.323	439