

S:\C00\3500--3599\3599\013\Micros\10156\roadway\sheet\101560_MS001.dgn 1/29/2020 10:35:05 AM KoreyS

SHEET NO.	STATION TO STATION	614						622	644										
		OBJECT MARKER, I-WAY EACH	BARRIER REFLECTOR EACH	INCREASED BARRIER DELINEATION FT.	WORK ZONE IMPACT ATTENUATOR (UNIDIRECTIONAL) EACH	WORK ZONE IMPACT ATTENUATOR (BIDIRECTIONAL) EACH	WORK ZONE EDGE LINE, CLASS I FT.	WORK ZONE DOTTED LINE, CLASS I FT.	PORTABLE BARRIER, 32" FT.	REMOVAL OF PAVEMENT MARKING FT.	STOP LINE, TEMPORARY FT.								
MAR-23-1150 L/R																			
PHASE 1																			
11	STA. 588+09 TO STA. 598+50						780		953										
12	STA. 598+50 TO STA. 609+50	20	20	320	2	1,833	99	1,000	1,733										
13	STA. 609+50 TO STA. 617+19					970	681		783										
PHASE 2																			
14	STA. 567+01 TO STA. 587+50						1,149	780	973										
15	STA. 587+50 TO STA. 598+50						2,894	243	1,100										
16	STA. 598+50 TO STA. 609+50	27	27	760	1	3,294	407	2,008	407										
17	STA. 609+50 TO STA. 623+96	9	9	360	1	2,008	780	360	780										
PHASE 3																			
18	STA. 587+58 TO STA. 598+50						1,092	780	1,004										
19	STA. 598+50 TO STA. 609+50	23	23	480	1	2,520		1,160											
20	STA. 609+50 TO STA. 623+67	10	10	480	1	1,810	780	480	1,200										
1150 SUB-SUMMARY		89	89	2,400	6	17,540	5,330	5,008	8,933										
MAR-23-1494 L/R																			
PHASE 1B																			
21	STA. 770+82 TO STA. 774+00						318	142	142										
22	STA. 774+00 TO STA. 784+00	1	1	40	1	1,159	550	40	1,059										
23	STA. 784+00 TO STA. 795+00	23	23	680	1	2,759	188	1,120	1,709										
24	STA. 795+00 TO STA. 802+68					768	592		592										
PHASE 2 & 3																			
25	STA. 768+13 TO STA. 774+00						587	499	499										
26	STA. 774+00 TO STA. 784+00	3	3	120	1	2,081	281	120	247										
27	STA. 784+00 TO STA. 795+00	24	24	760	1	3,830		1,200	340										
28	STA. 795+00 TO STA. 802+68					1,625	780		780										
1494 SUB-SUMMARY		51	51	1,600	4	13,127	3,032	2,480	5,368										
MAR-23-0342																			
PHASE 1																			
29	STA. 30+50 TO STA. 37+52 (MAR-231 ALIGNMENT)	9	9	120			2	1,306	420	2,106	24								
PHASE 2																			
30	STA. 30+50 TO STA. 37+52 (MAR-231 ALIGNMENT)	9	9	120			2	1,306	420										
0342 SUB-SUMMARY		18	18	240			4	2,612	840	2,106	24								
TOTALS CARRIED TO GENERAL SUMMARY		158	158	4,240	10	4	33,279	8,362	8,328	16,407	24								

CALCULATED KCS CHECKED
MAINTENANCE OF TRAFFIC SUBSUMMARY
MAR-23-11.50
 31
 134

S:\COO\3500--3599\3599\013\Micros\10156\Roadway\Sheets\10156_GG001.dgn 1/29/2020 11:46:22 AM KoreyS

SHEET NUM.										PART.		ITEM	ITEM EXT	GRAND TOTAL	UNIT	DESCRIPTION	SEE SHEET NO.	
31	36	57	62							01/NHS/BR	02/NHS/BR							
										LS	LS	201	11000	LS		CLEARING AND GRUBBING		
	1,494									412	1,082	202	23000	1,494	SY	PAVEMENT REMOVED, (FULL-DEPTH)		
		12,322								6,406	5,916	202	38000	12,322	FT	GUARDRAIL REMOVED		
		6								5	1	202	42000	6	EACH	ANCHOR ASSEMBLY REMOVED, TYPE A		
		16								10	6	202	47000	16	EACH	BRIDGE TERMINAL ASSEMBLY REMOVED		
		4								2	2	202	47800	4	EACH	IMPACT ATTENUATOR REMOVED		
		64									64	202	75000	64	FT	FENCE REMOVED		
										65	7,267	203	10000	7,332	CY	EXCAVATION	55	
										97	9,539	203	20000	9,636	CY	EMBANKMENT	55	
	1,998									417	1,581	204	10000	1,998	SY	SUBGRADE COMPACTION		
										1	1	204	45000	2	HOUR	PROOF ROLLING		
		2.46								1.28	1.18	209	60500	2.46	MILE	LINEAR GRADING		
		102									102	601	21060	102	SY	TIED CONCRETE BLOCK MAT, TYPE 2		
	368									112	256	605	31100	368	FT	AGGREGATE DRAINS		
		679								679		606	15050	679	FT	GUARDRAIL, TYPE MGS		
		11,628								5,611	6,017	606	15100	11,628	FT	GUARDRAIL, TYPE MGS WITH LONG POSTS		
		85									85	606	15550	85	FT	GUARDRAIL, BARRIER DESIGN, TYPE MGS		
		6								4	2	606	26100	6	EACH	ANCHOR ASSEMBLY, TYPE E		
		6								4	2	606	26500	6	EACH	ANCHOR ASSEMBLY, TYPE T		
		12								8	4	606	35002	12	EACH	MGS BRIDGE TERMINAL ASSEMBLY, TYPE 1		
		4								2	2	606	35102	4	EACH	MGS BRIDGE TERMINAL ASSEMBLY, TYPE 2		
		4								2	2	606	60012	4	EACH	IMPACT ATTENUATOR, TYPE 1 (BIDIRECTIONAL)		
		64									64	607	15100	64	FT	FENCE, TYPE 47RA		
		48									48	609	24510	48	FT	CURB, TYPE 4-C		
		6								4	2	620	00500	6	EACH	DELINEATOR, POST GROUND MOUNTED		
		131								63	68	626	00102	131	EACH	BARRIER REFLECTOR, TYPE 1, ONE WAY		
										673	718	659	00300	1,391	CY	TOPSOIL		
										4,922	9,741	659	10000	14,663	SY	SEEDING AND MULCHING	3	
										0.85	0.85	659	20000	1.7	TON	COMMERCIAL FERTILIZER		
										1.3	1.3	659	31000	2.6	ACRE	LIME		
										0.08	0.08	659	35000	0.15	MGAL	WATER		
										4,922	9,741	670	00500	14,663	SY	SLOPE EROSION PROTECTION		
										3,000	2,000	832	30000	5,000	EACH	EROSION CONTROL		
	1,638									630	1,008	254	01000	1,638	SY	PAVEMENT		
	74										74	254	01000	74	SY	PAVEMENT PLANING, ASPHALT CONCRETE, 1.5" DEPTH		
	521										521	301	46000	521	CY	PAVEMENT PLANING, ASPHALT CONCRETE, 3.0" DEPTH		
	366									82	284	304	20000	366	CY	ASPHALT CONCRETE BASE, PG64-22, 9.0" DEPTH		
	360									106	254	407	10000	360	GAL	AGGREGATE BASE, 6.0" DEPTH		
																TACK COAT		
		71								28	43	442	20000	71	CY	ASPHALT CONCRETE SURFACE COURSE, 12.5 MM, TYPE A (448), 1.5" DEPTH		
		130									130	442	20000	130	CY	ASPHALT CONCRETE SURFACE COURSE, 12.5 MM, TYPE A (448), 3.0" DEPTH		
		124								40	84	617	10100	124	CY	COMPACTED AGGREGATE, TYPE A		
										X						STRUCTURE OVER 20 FOOT SPAN (5100844) FOR STRUCTURE MAR-23-1150 L GENERAL SUMMARY	65	
										X						STRUCTURE OVER 20 FOOT SPAN (5100879) FOR STRUCTURE MAR-23-1150 R GENERAL SUMMARY	78	
											X					STRUCTURE OVER 20 FOOT SPAN (5100968) FOR STRUCTURE MAR-23-1494 L GENERAL SUMMARY	91	
											X					STRUCTURE OVER 20 FOOT SPAN (5100992) FOR STRUCTURE MAR-23-1494 R GENERAL SUMMARY	110	
										X						STRUCTURE OVER 20 FOOT SPAN (5103215) FOR STRUCTURE MAR-231-0342 GENERAL SUMMARY	127	
	4,240									2,640	1,600	614	11630	4,240	FT	MAINTENANCE OF TRAFFIC INCREASED BARRIER DELINEATION		

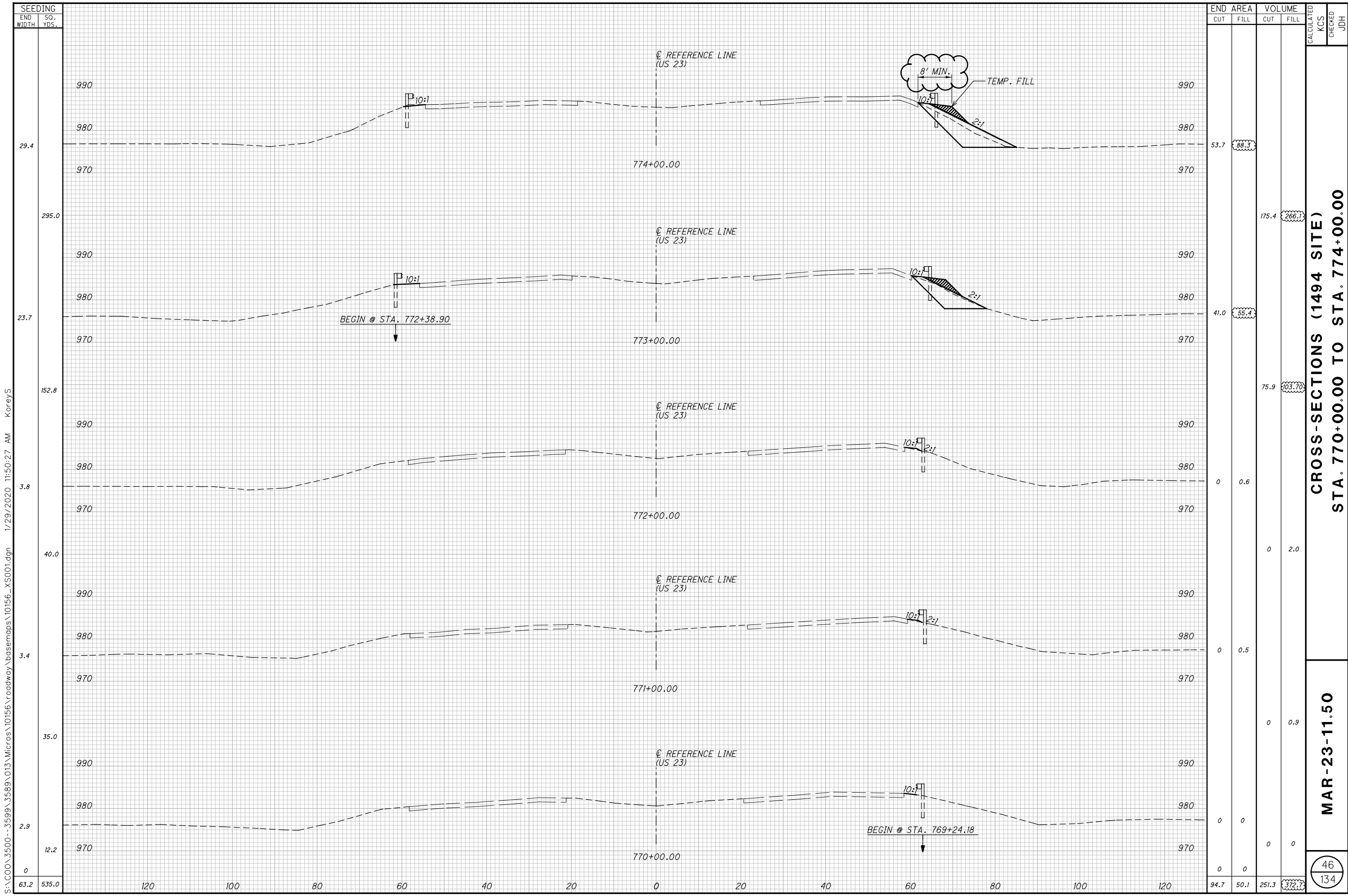
GENERAL SUMMARY

MAR-23-11.50

S:\C00\3500--3599\3599\013\Micros\10156\roadway\sheets\10156_GG001.dgn 1/29/2020 10:31:46 AM KoreyS

SHEET NUM.										PART.		ITEM	ITEM EXT	GRAND TOTAL	UNIT	DESCRIPTION	SEE SHEET NO.
31	36	57	62							01/NHS/ BR	02/NHS/ BR						
10										8	2	614	12336	10	EACH	WORK ZONE IMPACT ATTENUATOR (UNIDIRECTIONAL)	
4											4	614	12338	4	EACH	WORK ZONE IMPACT ATTENUATOR (BIDIRECTIONAL)	
											36	614	13310	36	EACH	BARRIER REFLECTOR, TYPE 1, ONE WAY	
										2	2	614	12500	4	EACH	REPLACEMENT SIGN	6
										8	7	614	12600	15	EACH	REPLACEMENT DRUM	6
158										107	51	614	13350	158	EACH	OBJECT MARKER, ONE WAY	
										9	9	614	18600	18	SNMT	PORTABLE CHANGEABLE MESSAGE SIGN	6
6.3										3.82	2.48	614	22000	6.3	MILE	WORK ZONE EDGE LINE, CLASS I, 4"	
8,362										5,330	3,032	614	24000	8,362	FT	WORK ZONE DOTTED LINE, CLASS I	
8,328										5,848	2,480	622	41000	8,328	FT	PORTABLE BARRIER, 32"	
24										24		644	00500	24	FT	STOP LINE, TEMPORARY	
											36	808	18700	36	SNMT	DIGITAL SPEED LIMIT (DSL) SIGN ASSEMBLY	
										1		SPECIAL	61411300	1	EACH	WORK ZONE TRAFFIC SIGNAL	6
																TRAFFIC CONTROL	
			5,400							2,726	2,674	618	40100	5,400	FT	RUMBLE STRIPS, SHOULDER (ASPHALT CONCRETE)	
			103							59	44	621	00100	103	EACH	RPM	
			103							59	44	621	54000	103	EACH	RAISED PAVEMENT MARKER REMOVED	
			192							124	68	630	02100	192	FT	GROUND MOUNTED SUPPORT, NO. 2 POST	
			93							17	76	630	03100	93	FT	GROUND MOUNTED SUPPORT, NO. 3 POST	
			200							150	50	630	08000	200	FT	GROUND MOUNTED STRUCTURAL BEAM SUPPORT, W12X30	
			75							41	34	630	81100	75	SF	SIGN ERECTED, FLAT SHEET	
			340							250	90	630	81200	340	SF	SIGN ERECTED, EXTRUSHEET	
			27							18	9	630	84900	27	EACH	REMOVAL OF GROUND MOUNTED SIGN AND DISPOSAL	
			23							13	10	630	86002	23	EACH	REMOVAL OF GROUND MOUNTED POST SUPPORT AND DISPOSAL	
			0.68							0.28	0.4	644	00104	0.68	MILE	EDGE LINE, 6", (WHITE)	
			0.38							0.26	0.12	644	00104	0.38	MILE	EDGE LINE, 6", (YELLOW)	
			1.66							0.78	0.88	644	00200	1.66	MILE	LANE LINE, 4", (WHITE)	
			0.48							0.4	0.08	646	10010	0.48	MILE	EDGE LINE, 6", (WHITE)	
			0.21							0.12	0.09	646	10010	0.21	MILE	EDGE LINE, 6", (YELLOW)	
			0.22							0.14	0.08	646	10100	0.22	MILE	LANE LINE, 4", (WHITE)	
			0.14							0.14		646	10200	0.14	MILE	CENTER LINE	
										LS	LS	108	10000	LS		INCIDENTALS	
										LS	LS	614	11001	LS		CPM PROGRESS SCHEDULE	
										6	6	619	16010	12	MNTH	MAINTAINING TRAFFIC, AS PER PLAN	5
										LS	LS	623	10000	LS		FIELD OFFICE, TYPE B	
										LS	LS	624	10000	LS		CONSTRUCTION LAYOUT STAKES AND SURVEYING	
																MOBILIZATION	

CALCULATED KCS CHECKED JDH
GENERAL SUMMARY
MAR-23-11.50
 33
 134



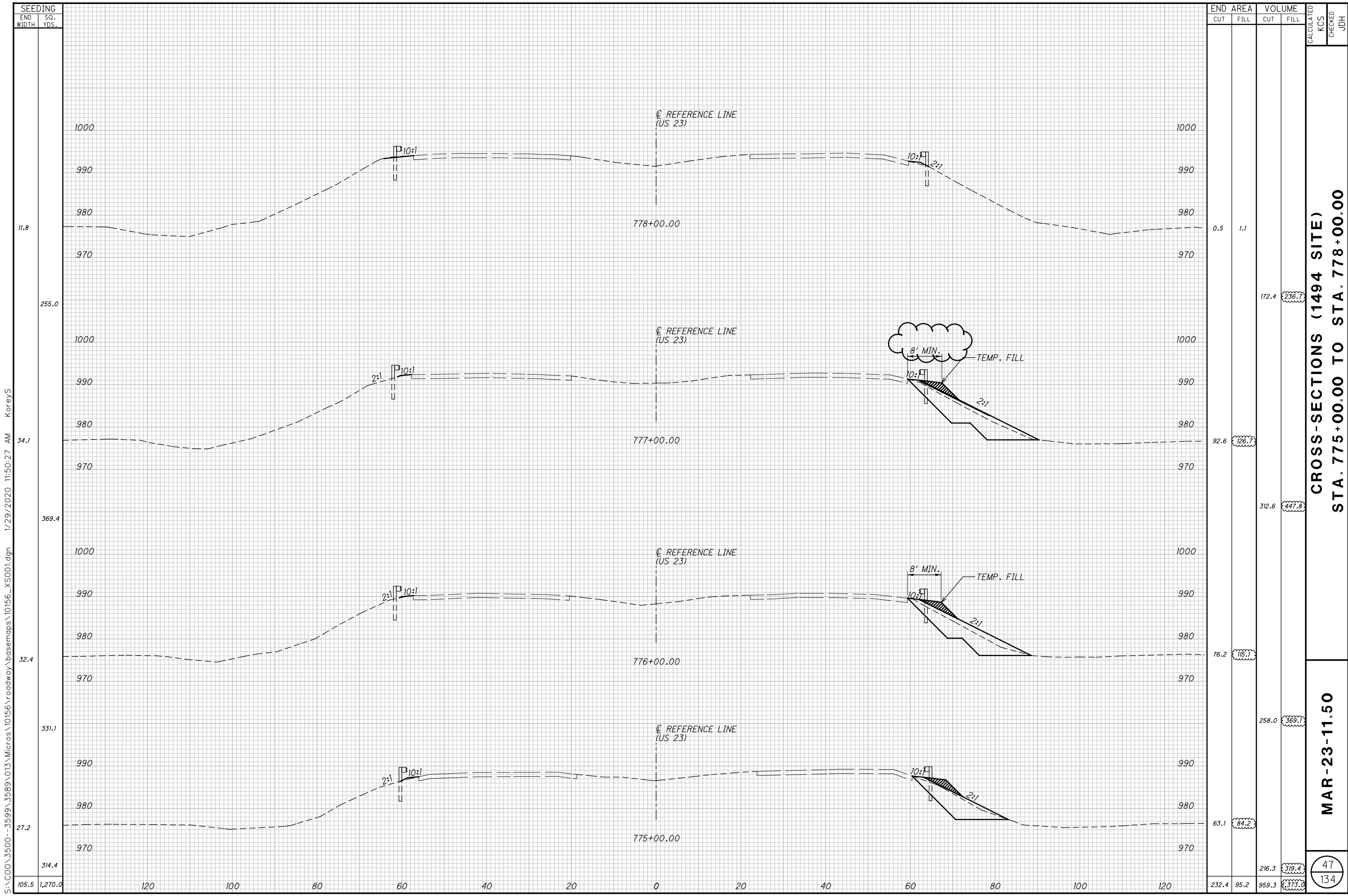
SEEDING	
END WIDTH	SO. YDS.
29.4	
295.0	
23.7	
152.8	
3.8	
40.0	
3.4	
35.0	
2.9	
12.2	
0	
63.2	535.0

END AREA		VOLUME		CALCULATED	
CUT	FILL	CUT	FILL	KCS	JDH
53.7	88.3				
		175.4	266.1		
41.0	55.4				
		75.9	103.7		
0	0.6				
		0	2.0		
0	0.5				
		0	0.9		
0	0				
		0	0		
94.7	50.1	251.3	372.7	46	134

CROSS-SECTIONS (1494 SITE)
STA. 770+00.00 TO STA. 774+00.00

MAR-23-11.50

S:\C00\3500--3599\3589\013\Micros\10156\roadway\basemaps\10156_XS001.dgn 1/29/2020 11:50:27 AM KoreyS



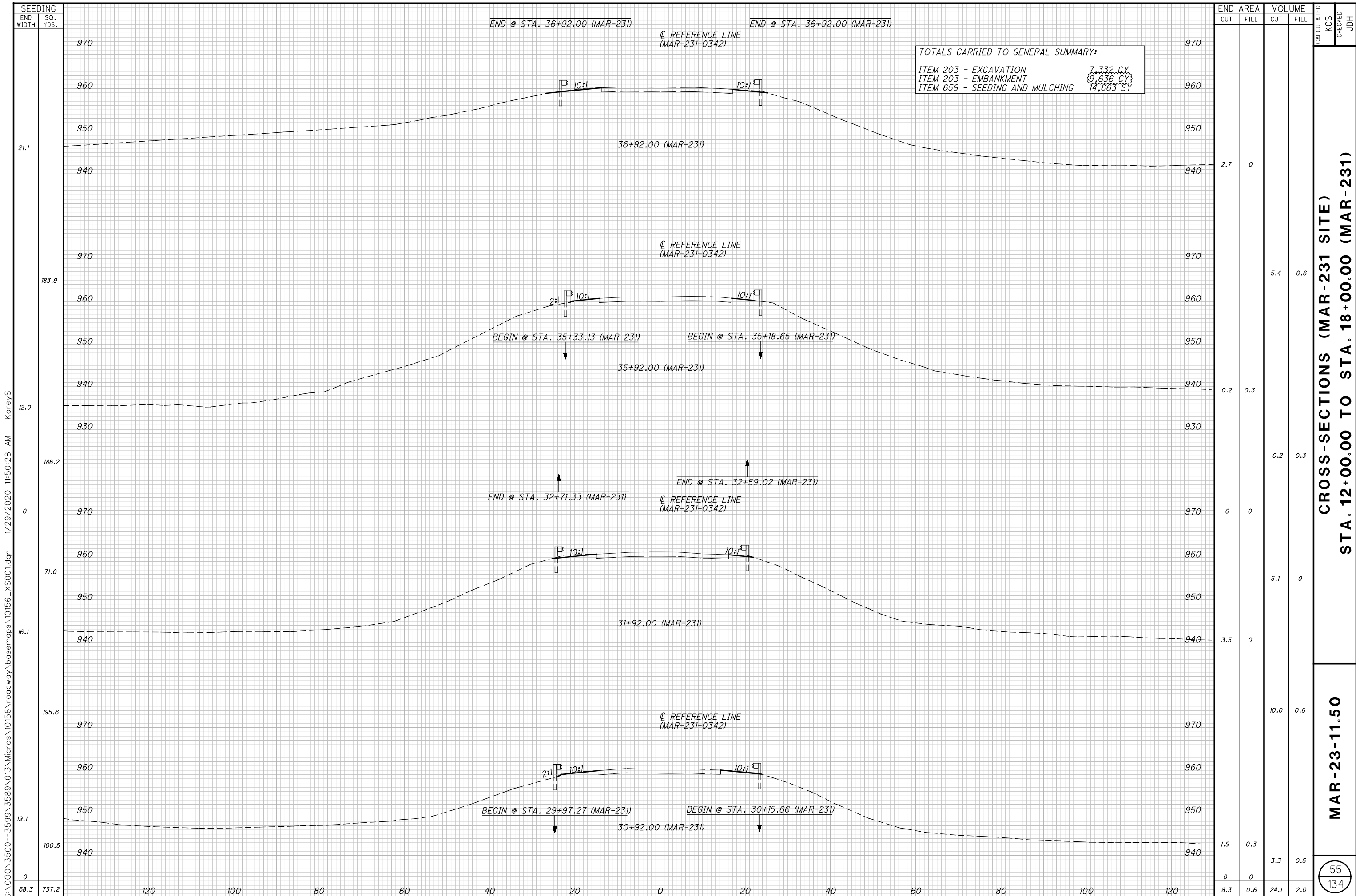
SEEDING	
END WIDTH	SO. YDS.
11.8	
255.0	
34.1	
369.4	
32.4	
331.1	
27.2	
314.4	
105.5	1,270.0

END AREA		VOLUME		CALCULATED	
CUT	FILL	CUT	FILL	KCS	JDH
0.5	1.1	172.4	236.7		
92.6	126.7	312.6	447.8		
76.2	115.7	258.0	368.1		
63.1	84.2	216.3	319.4	47	
232.4	95.2	959.3	1372.0	134	

CROSS-SECTIONS (1494 SITE)
STA. 775+00.00 TO STA. 778+00.00

MAR-23-11.50

S:\C00\3500-3599\3599\013\Micros\10156\roadway\basemaps\10156_XS001.dgn 1/29/2020 11:50:27 AM KoreyS



END STA.	AREA		VOLUME		CALCULATED KCS	CHECKED JDH
	CUT	FILL	CUT	FILL		
36+92.00	2.7	0				
35+92.00	0.2	0.3	5.4	0.6		
31+92.00	0	0	0.2	0.3		
30+92.00	3.5	0	5.1	0		
TOTAL	6.4	0.3	10.7	1.2		

CROSS-SECTIONS (MAR-231 SITE)
STA. 12+00.00 TO STA. 18+00.00 (MAR-231)

MAR-23-11.50

55
 134

S:\C00\3500--3599\013\Micros\10156\Roadway\basemaps\10156_XS001.dgn 1/29/2020 11:50:28 AM KoreyS