

S:\C00\3500--3599\3599\013\Micros\10156\roadway\sheet\101560\_MS001.dgn 1/29/2020 10:35:32 AM KoreyS

SHEET NO.	STATION TO STATION	614						622	644								
		OBJECT MARKER, I-WAY EACH	BARRIER REFLECTOR EACH	INCREASED BARRIER DELINEATION FT.	WORK ZONE IMPACT ATTENUATOR (UNIDIRECTIONAL) EACH	WORK ZONE IMPACT ATTENUATOR (BIDIRECTIONAL) EACH	WORK ZONE EDGE LINE, CLASS I FT.	WORK ZONE DOTTED LINE, CLASS I FT.	PORTABLE BARRIER, 32" FT.	REMOVAL OF PAVEMENT MARKING FT.	STOP LINE, TEMPORARY FT.						
<b>MAR-23-1150 L/R</b>																	
<b>PHASE 1</b>																	
11	STA. 588+09 TO STA. 598+50						780		953								
12	STA. 598+50 TO STA. 609+50	20	20	320	2	1,833	99	1,000	1,733								
13	STA. 609+50 TO STA. 617+19					970	681		783								
<b>PHASE 2</b>																	
14	STA. 567+01 TO STA. 587+50					1,149	780		973								
15	STA. 587+50 TO STA. 598+50					2,894	243		1,100								
16	STA. 598+50 TO STA. 609+50	27	27	760	1	3,294	407	2,008	407								
17	STA. 609+50 TO STA. 623+96	9	9	360	1	2,008	780	360	780								
<b>PHASE 3</b>																	
18	STA. 587+58 TO STA. 598+50					1,092	780		1,004								
19	STA. 598+50 TO STA. 609+50	23	23	480	1	2,520		1,160									
20	STA. 609+50 TO STA. 623+67	10	10	480	1	1,810	780	480	1,200								
<b>1150 SUB-SUMMARY</b>		89	89	2,400	6	17,540	5,330	5,008	8,933								
<b>MAR-23-1494 L/R</b>																	
<b>PHASE 1B</b>																	
21	STA. 770+82 TO STA. 774+00					318	142		142								
22	STA. 774+00 TO STA. 784+00	1	1	40	1	1,159	550	40	1,059								
23	STA. 784+00 TO STA. 795+00	23	23	680	1	2,759	188	1,120	1,709								
24	STA. 795+00 TO STA. 802+68					768	592		592								
<b>PHASE 2 &amp; 3</b>																	
25	STA. 768+13 TO STA. 774+00					587	499		499								
26	STA. 774+00 TO STA. 784+00	3	3	120	1	2,081	281	120	247								
27	STA. 784+00 TO STA. 795+00	24	24	760	1	3,830		1,200	340								
28	STA. 795+00 TO STA. 802+68					1,625	780		780								
<b>1494 SUB-SUMMARY</b>		51	51	1,600	4	13,127	3,032	2,480	5,368								
<b>MAR-23-0342</b>																	
<b>PHASE 1</b>																	
29	STA. 30+50 TO STA. 37+52 (MAR-231 ALIGNMENT)	9	9	120		1,306		420	2,106	24							
<b>PHASE 2</b>																	
30	STA. 30+50 TO STA. 37+52 (MAR-231 ALIGNMENT)	9	9	120		1,306		420									
<b>0342 SUB-SUMMARY</b>		18	18	240		2,612		840	2,106	24							
<b>TOTALS CARRIED TO GENERAL SUMMARY</b>		158	158	4,240	10	33,279	8,362	8,328	16,407	24							

CALCULATED KCS CHECKED  
**MAINTENANCE OF TRAFFIC SUBSUMMARY**  
**MAR-23-11.50**  
 31  
 134

S:\COO\3500--3599\3599\013\Roadway\Sheets\10156\Roadway\10156\_GG001.dgn 1/29/2020 11:53:51 AM KoreyS

SHEET NUM.

PART.

ITEM

ITEM EXT

GRAND TOTAL

UNIT

DESCRIPTION

SEE SHEET NO.

CALCULATED  
KCS  
CHECKED  
JDH

31

36

57

62

01/NHS/BR

02/NHS/BR

ITEM

ITEM EXT

GRAND TOTAL

UNIT

DESCRIPTION

SEE SHEET NO.

ROADWAY

CLEARING AND GRUBBING

PAVEMENT REMOVED, (FULL-DEPTH)

GUARDRAIL REMOVED

ANCHOR ASSEMBLY REMOVED, TYPE A

BRIDGE TERMINAL ASSEMBLY REMOVED

IMPACT ATTENUATOR REMOVED

FENCE REMOVED

EXCAVATION

EMBANKMENT

SUBGRADE COMPACTION

PROOF ROLLING

LINEAR GRADING

TIED CONCRETE BLOCK MAT, TYPE 2

AGGREGATE DRAINS

GUARDRAIL, TYPE MGS

GUARDRAIL, TYPE MGS WITH LONG POSTS

GUARDRAIL, BARRIER DESIGN, TYPE MGS

ANCHOR ASSEMBLY, TYPE E

ANCHOR ASSEMBLY, TYPE T

MGS BRIDGE TERMINAL ASSEMBLY, TYPE 1

MGS BRIDGE TERMINAL ASSEMBLY, TYPE 2

IMPACT ATTENUATOR, TYPE 1 (BIDIRECTIONAL)

FENCE, TYPE 47RA

CURB, TYPE 4-C

DELINEATOR, POST GROUND MOUNTED

BARRIER REFLECTOR, TYPE 1, ONE WAY

EROSION CONTROL

TOPSOIL

SEEDING AND MULCHING

COMMERCIAL FERTILIZER

LIME

WATER

SLOPE EROSION PROTECTION

EROSION CONTROL

PAVEMENT

PAVEMENT PLANING, ASPHALT CONCRETE, 1.5" DEPTH

PAVEMENT PLANING, ASPHALT CONCRETE, 3.0" DEPTH

ASPHALT CONCRETE BASE, PG64-22, 9.0" DEPTH

AGGREGATE BASE, 6.0" DEPTH

TACK COAT

ASPHALT CONCRETE SURFACE COURSE, 12.5 MM, TYPE A (448), 1.5" DEPTH

ASPHALT CONCRETE SURFACE COURSE, 12.5 MM, TYPE A (448), 3.0" DEPTH

COMPACTED AGGREGATE, TYPE A

STRUCTURE OVER 20 FOOT SPAN (5100844)  
FOR STRUCTURE MAR-23-1150 L GENERAL SUMMARY

STRUCTURE OVER 20 FOOT SPAN (5100879)  
FOR STRUCTURE MAR-23-1150 R GENERAL SUMMARY

STRUCTURE OVER 20 FOOT SPAN (5100968)  
FOR STRUCTURE MAR-23-1494 L GENERAL SUMMARY

STRUCTURE OVER 20 FOOT SPAN (5100992)  
FOR STRUCTURE MAR-23-1494 R GENERAL SUMMARY

STRUCTURE OVER 20 FOOT SPAN (5103215)  
FOR STRUCTURE MAR-231-0342 GENERAL SUMMARY

MAINTENANCE OF TRAFFIC  
INCREASED BARRIER DELINEATION

GENERAL SUMMARY

MAR-23-11.50

32  
134

1,494

12,322

6

16

4

64

1,998

2.46

102

368

679

11,628

85

6

6

12

4

4

64

48

6

131

1,638

74

521

366

360

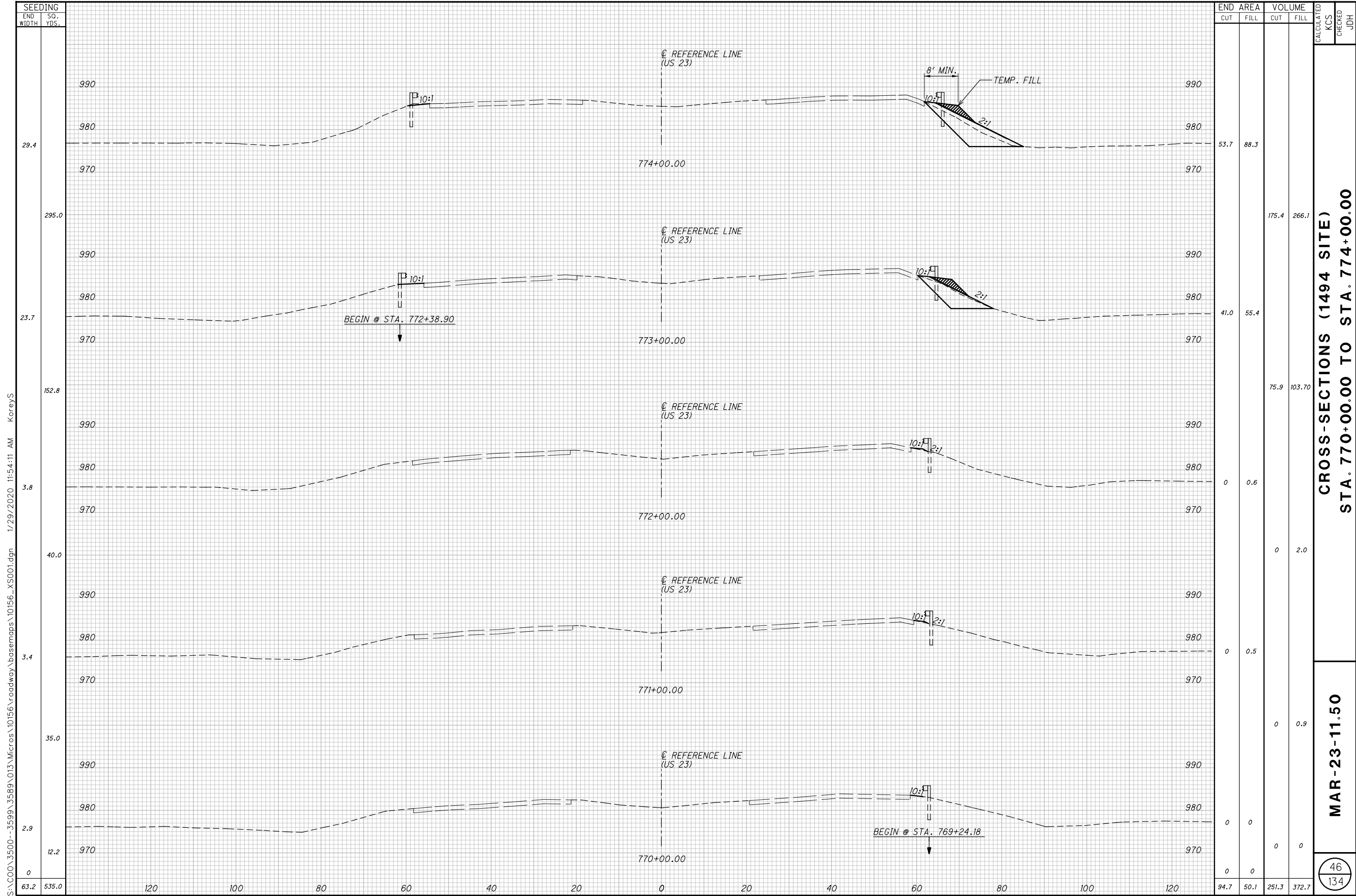
71

130

124

4,240





SEEDING	
END WIDTH	SO. YDS.
29.4	
295.0	
23.7	
152.8	
3.8	
40.0	
3.4	
35.0	
2.9	
12.2	
0	
63.2	535.0

END AREA		VOLUME		CALCULATED	
CUT	FILL	CUT	FILL	KCS	JDH
53.7	88.3				
		175.4	266.1		
41.0	55.4				
		75.9	103.70		
0	0.6				
		0	2.0		
0	0.5				
		0	0.9		
0	0				
		0	0		
94.7	50.1	251.3	372.7		

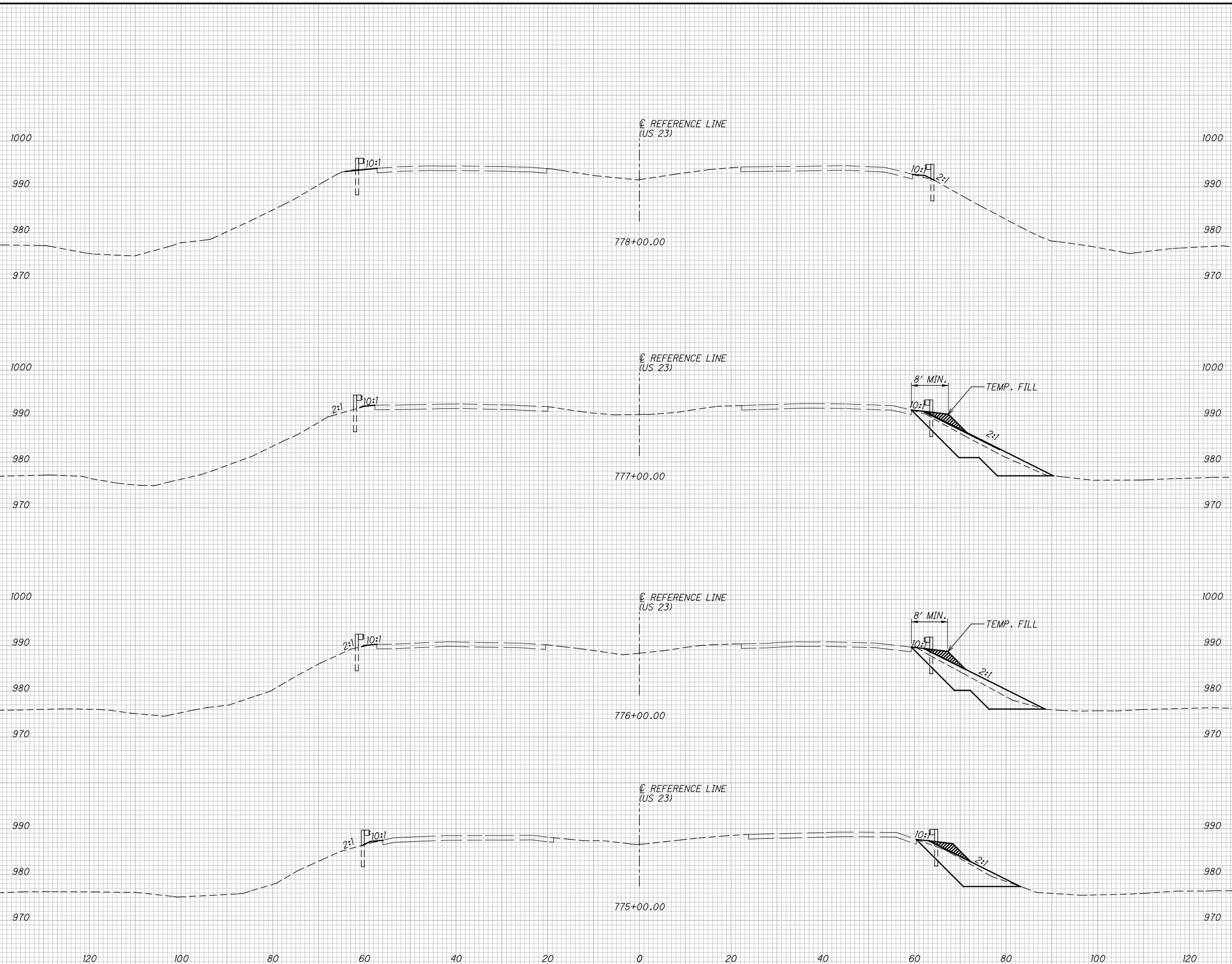
**CROSS-SECTIONS (1494 SITE)**  
**STA. 770+00.00 TO STA. 774+00.00**

**MAR-23-11.50**

46  
 134

S:\C00\3500--3599\3599\013\Micros\10156\roadway\basemaps\10156\_XS001.dgn 1/29/2020 11:54:11 AM KoreyS

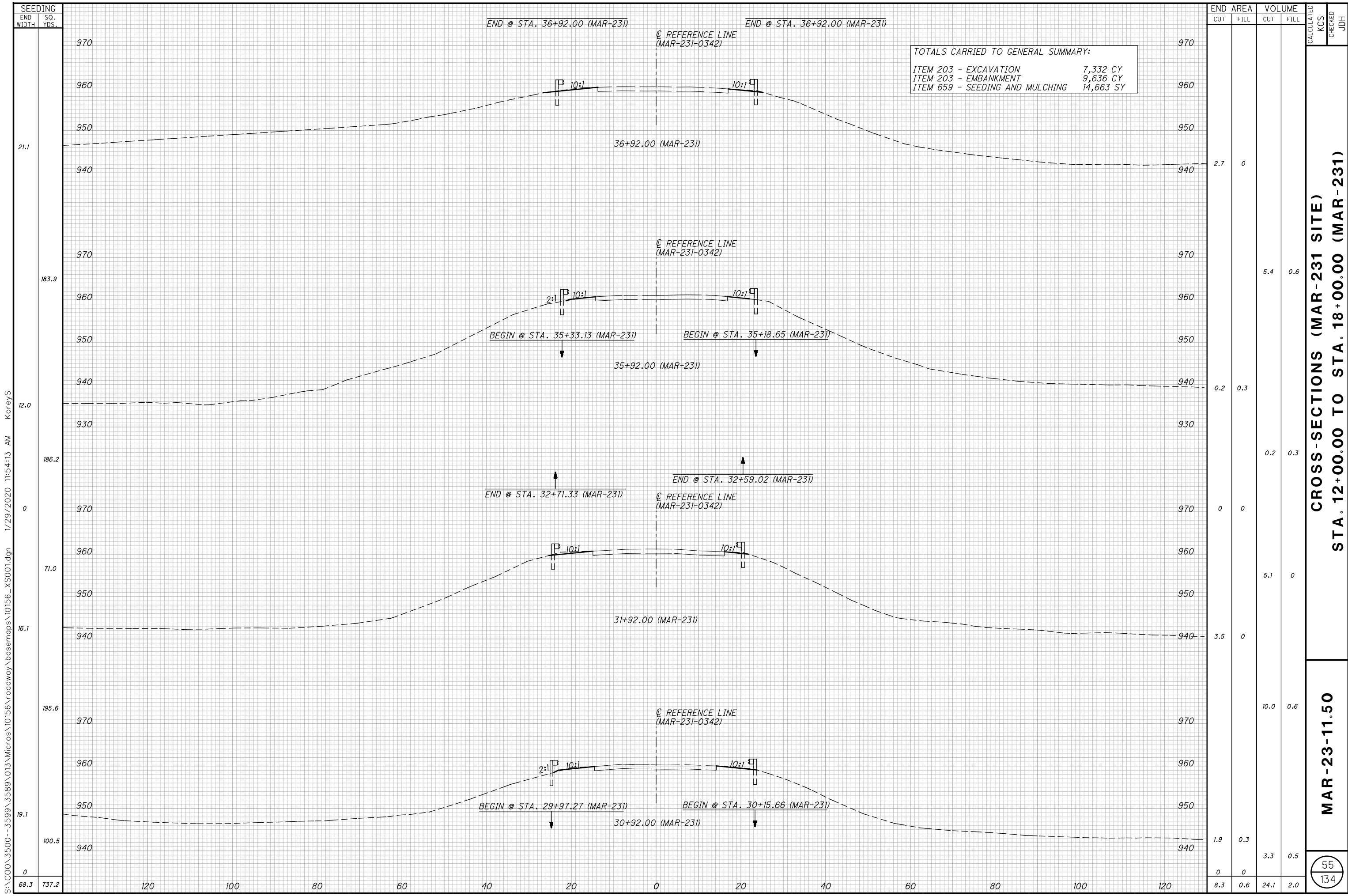
SEEDING  
 END SO.  
 WIDTH YDS.  
 11.8  
 255.0  
 34.1  
 369.4  
 32.4  
 331.1  
 27.2  
 314.4  
 105.5 1,270.0  
 120 100 80 60 40 20 0 20 40 60 80 100 120



END AREA		VOLUME		CALCULATED KCS	CHECKED JDH
CUT	FILL	CUT	FILL		
0.5	1.1	172.4	236.7		
92.6	126.7	312.6	447.8		
76.2	115.1	258.0	369.1		
63.1	84.2	216.3	319.4		
232.4	95.2	959.3	1,373.0		

CROSS-SECTIONS (1494 SITE)  
 STA. 775+00.00 TO STA. 778+00.00  
 MAR-23-11.50  
 47  
 134

S:\C00\3500-3599\3599\013\Micros\10156\roadway\basemaps\10156\_XS001.dgn 1/29/2020 11:54:11 AM KoreyS



TOTALS CARRIED TO GENERAL SUMMARY:		
ITEM 203 - EXCAVATION		7,332 CY
ITEM 203 - EMBANKMENT		9,636 CY
ITEM 659 - SEEDING AND MULCHING		14,663 SY

END STA.	AREA		VOLUME		CALCULATED KCS	CHECKED JDH
	CUT	FILL	CUT	FILL		
36+92.00	2.7	0				
35+92.00	0.2	0.3	5.4	0.6		
31+92.00	0	0	0.2	0.3		
30+92.00	3.5	0	5.1	0		
TOTALS	6.4	0.3	10.7	1.5		

**CROSS-SECTIONS (MAR-231 SITE)**  
**STA. 12+00.00 TO STA. 18+00.00 (MAR-231)**

**MAR-23-11.50**

55  
 134

S:\C00\3500--3599\013\Micros\10156\roadway\base\10156\_XS001.dgn 1/29/2020 11:54:13 AM KoreyS

SEEDING	
END WIDTH	SO. YDS.
68.3	737.2

120 100 80 60 40 20 0 20 40 60 80 100 120