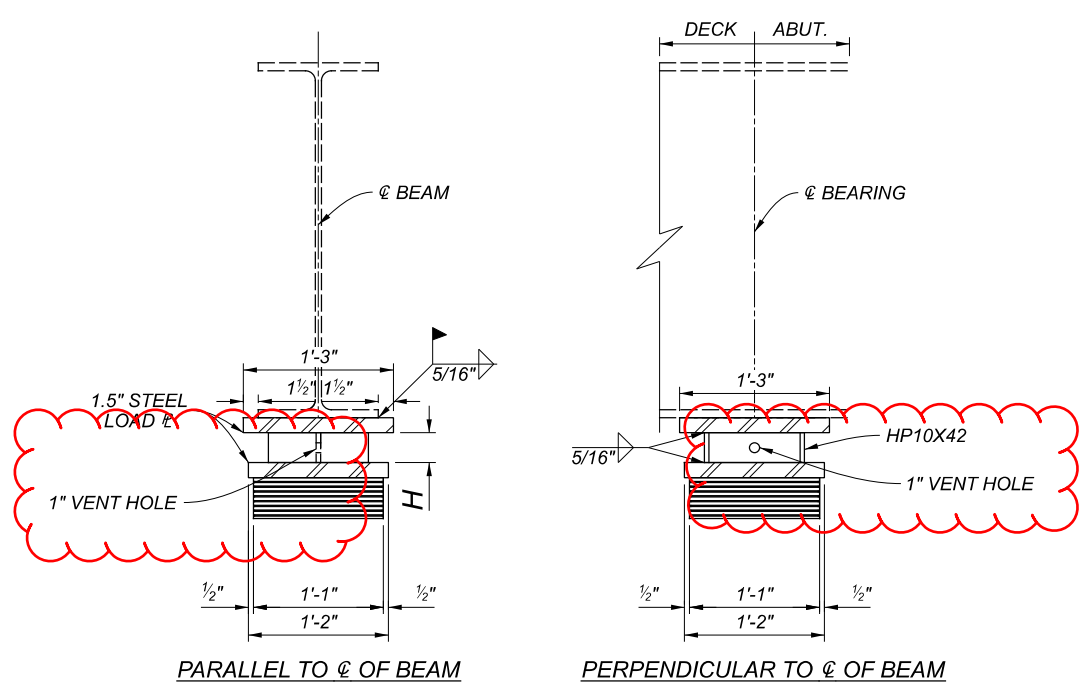


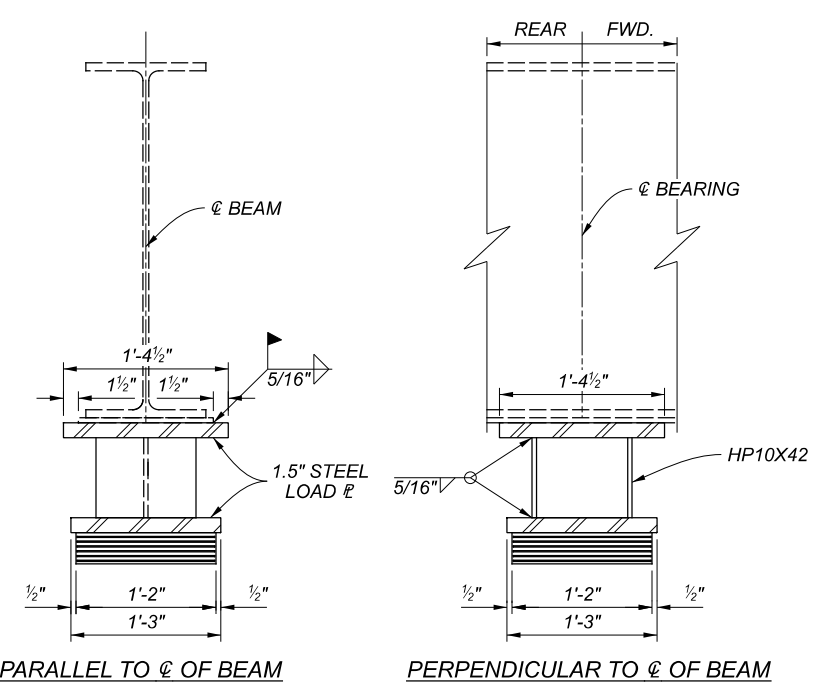
MAR-95-22.64

MODEL: 103961\_SFN\_5102707\_SB001\_PAPER SIZE: 17x11 (in.) DATE: 10/24/2022 TIME: 9:18:57 AM USER: jbrosmah p:\vohidoc-pw-bentley.com\shahidoc-pw-02\Documents\01 Active Projects\District 06\Warbon\103961\400-Engineering\Structures\SFN\_5102707\_Sheets\103961\_SFN\_5102707\_SB001.dgn



PARALLEL TO  $\phi$  OF BEAM      PERPENDICULAR TO  $\phi$  OF BEAM

**BEARING ASSEMBLY DETAILS - ABUTMENTS**

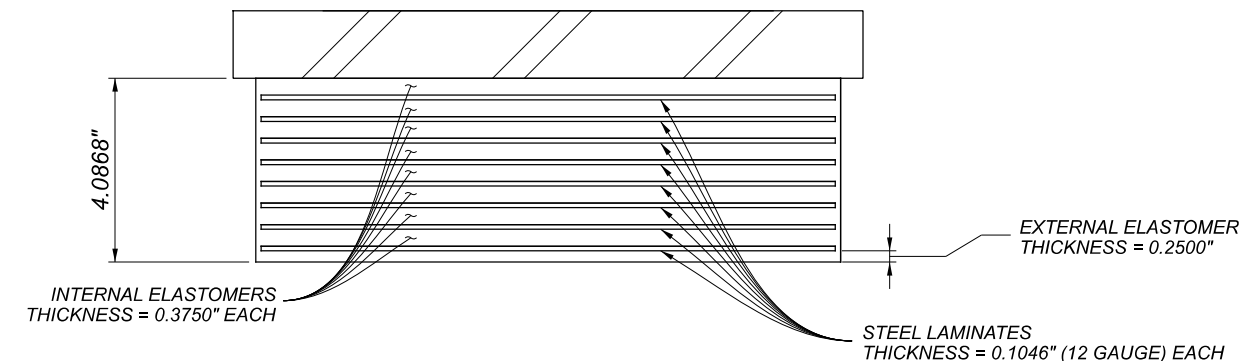


PARALLEL TO  $\phi$  OF BEAM      PERPENDICULAR TO  $\phi$  OF BEAM

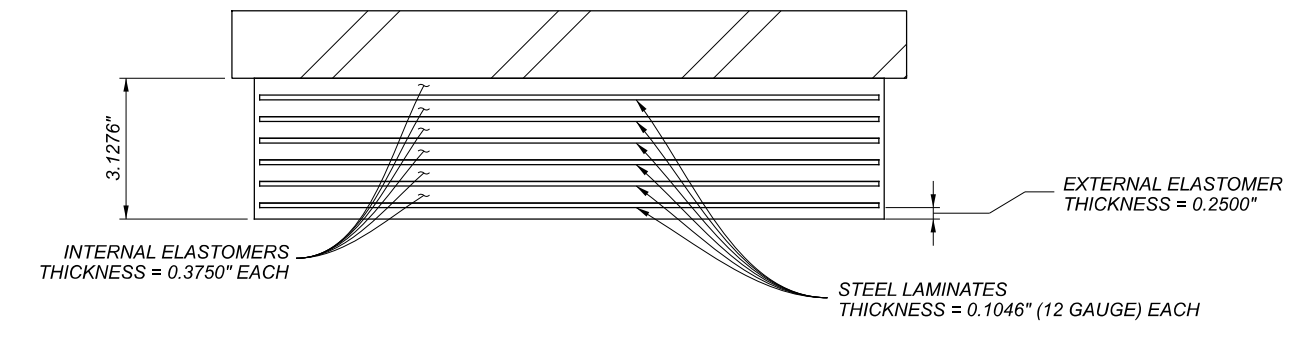
**BEARING ASSEMBLY DETAILS - PIERS**

| EXISTING BEAM SEAT ELEVATIONS |        |           |
|-------------------------------|--------|-----------|
| LOCATION                      | BEAM # | ELEVATION |
| REAR ABUT.                    | 1      | 981.076   |
| REAR ABUT.                    | 2      | 980.737   |
| REAR ABUT.                    | 3      | 980.370   |
| REAR ABUT.                    | 4      | 979.958   |
| REAR ABUT.                    | 5      | 979.569   |
| REAR ABUT.                    | 6      | 979.169   |
| PIER 1                        | 1      | 981.080   |
| PIER 1                        | 2      | 980.733   |
| PIER 1                        | 3      | 980.350   |
| PIER 1                        | 4      | 979.948   |
| PIER 1                        | 5      | 979.584   |
| PIER 1                        | 6      | 979.153   |
| PIER 2                        | 1      | 981.065   |
| PIER 2                        | 2      | 980.676   |
| PIER 2                        | 3      | 980.329   |
| PIER 2                        | 4      | 979.925   |
| PIER 2                        | 5      | 979.547   |
| PIER 2                        | 6      | 979.205   |
| FWD. ABUT.                    | 1      | 981.212   |
| FWD. ABUT.                    | 2      | 980.813   |
| FWD. ABUT.                    | 3      | 980.457   |
| FWD. ABUT.                    | 4      | 980.040   |
| FWD. ABUT.                    | 5      | 979.674   |
| FWD. ABUT.                    | 6      | 979.260   |

| HP 10X42 CUT HEIGHTS   |        |           |            |        |              |
|--|--------|-----------|------------|--------|--------------|
| FABRICATE EACH BEARING WITH THESE INDIVIDUAL SECTION HEIGHTS |        |           |            |        |              |
| LOCATION   | BEAM # | ELEVATION | LOCATION   | BEAM # | DIM. H (IN.) |
| REAR ABUT.   | 1      | 981.076   | REAR ABUT. | 1      | 3 - 0"       |
| REAR ABUT.   | 2      | 980.737   | REAR ABUT. | 2      | 3 - 9/16"    |
| REAR ABUT.   | 3      | 980.370   | REAR ABUT. | 3      | 3 - 1/4"     |
| REAR ABUT.   | 4      | 979.958   | REAR ABUT. | 4      | 3 - 0"       |
| REAR ABUT.   | 5      | 979.569   | REAR ABUT. | 5      | 2 - 13/16"   |
| REAR ABUT.   | 6      | 979.169   | REAR ABUT. | 6      | 2 - 9/16"    |
| PIER 1   | 1      | 981.080   | PIER 1     | 1      | 8 - 1/4"     |
| PIER 1   | 2      | 980.733   | PIER 1     | 2      | 8 - 1/8"     |
| PIER 1   | 3      | 980.350   | PIER 1     | 3      | 7 - 15/16"   |
| PIER 1   | 4      | 979.948   | PIER 1     | 4      | 7 - 7/8"     |
| PIER 1   | 5      | 979.584   | PIER 1     | 5      | 8 - 1/16"    |
| PIER 1   | 6      | 979.153   | PIER 1     | 6      | 7 - 5/8"     |
| PIER 2   | 1      | 981.065   | PIER 2     | 1      | 7 - 7/8"     |
| PIER 2   | 2      | 980.676   | PIER 2     | 2      | 7 - 3/8"     |
| PIER 2   | 3      | 980.329   | PIER 2     | 3      | 7 - 1/2"     |
| PIER 2   | 4      | 979.925   | PIER 2     | 4      | 7 - 3/8"     |
| PIER 2   | 5      | 979.547   | PIER 2     | 5      | 7 - 1/2"     |
| PIER 2   | 6      | 979.205   | PIER 2     | 6      | 8 - 1/16"    |
| FWD. ABUT.   | 1      | 981.212   | FWD. ABUT. | 1      | 3 - 7/16"    |
| FWD. ABUT.   | 2      | 980.813   | FWD. ABUT. | 2      | 3 - 1/8"     |
| FWD. ABUT.   | 3      | 980.457   | FWD. ABUT. | 3      | 2 - 7/8"     |
| FWD. ABUT.   | 4      | 980.040   | FWD. ABUT. | 4      | 3 - 0"       |
| FWD. ABUT.   | 5      | 979.674   | FWD. ABUT. | 5      | 3 - 7/16"    |
| FWD. ABUT.   | 6      | 979.260   | FWD. ABUT. | 6      | 3 - 1/16"    |



**ABUTMENT ELASTOMERIC BEARING DETAILS**



**PIER ELASTOMERIC BEARING DETAILS**

**NOTES**

- ELASTOMERIC BEARINGS**  
THE ELASTOMER SHALL HAVE A HARDNESS OF 50 DUROMETER. THE BEARINGS WERE DESIGNED UNDER DIVISION 1, SECTION 14.6.6 (METHOD A) OF THE AASHTO STANDARD SPECIFICATIONS FOR HIGHWAY BRIDGES.
- LOAD PLATE & HP10X42**  
THE STEEL LOAD PLATES AND HP10X42 SHALL BE MADE OF A709 STEEL GRADE 50.  
THE STEEL LOAD PLATE SHALL BE BONDED BY VULCANIZATION TO THE ELASTOMER DURING THE MOLD PROCESS.
- HP10X42 LENGTHS ARE BASED ON PROVIDED EXISTING BEAM SEAT ELEVATIONS. THE CONTRACTOR SHALL FIELD VERIFY THE EXISTING BEAM SEAT ELEVATIONS. ANY ELEVATION DIFFERENCES SHALL BE ACCOUNTED FOR BY ADJUSTING HP10X42 LENGTH.

| DESIGN LOADING |             |             |              |
|----------------|-------------|-------------|--------------|
| LOCATION       | D.L. (KIPS) | L.L. (KIPS) | TOTAL (KIPS) |
| REAR ABUT.     | 61.31       | 59.25       | 120.56       |
| PIER 1         | 115.13      | 93.40       | 208.53       |
| PIER 2         | 115.13      | 93.40       | 208.53       |
| FWD. ABUT.     | 61.31       | 59.25       | 120.56       |

| ELASTOMERIC BEARING PAD DIMENSIONS |                       |                          |                             |                        |                                       |   |                                       |
|------------------------------------|-----------------------|--------------------------|-----------------------------|------------------------|---------------------------------------|---|---------------------------------------|
| LOCATION                           | BEARING PAD DIMENSION | TOP LOAD PLATE DIMENSION | BOTTOM LOAD PLATE DIMENSION | BEARING HEIGHT - (IN.) | NUMBER OF STEEL LAMINATES - (0.1046") | NUMBER OF INTERNAL ELASTOMERS - (0.3750") | NUMBER OF EXTERNAL LAYERS - (0.2500") |
| REAR ABUT.                         | 13" x 13"             | 15" x 15"                | 14" x 14"                   | 4.0868                 | 8                                     | 8   | 1                                     |
| PIER 1                             | 14" x 14"             | 16.5" x 16.5"            | 15" x 15"                   | 3.1276                 | 6                                     | 6   | 1                                     |
| PIER 2                             | 14" x 14"             | 16.5" x 16.5"            | 15" x 15"                   | 3.1276                 | 6                                     | 6   | 1                                     |
| FWD. ABUT.                         | 13" x 13"             | 15" x 15"                | 14" x 14"                   | 4.0868                 | 8                                     | 8   | 1                                     |

BEARING DETAILS  
 BRIDGE NO. MAR-95-2264  
 S.R. 95 OVER OLENTANGY RIVER

SFN 5102707  
 DESIGN AGENCY  
  
 DESIGNER CHECKER  
 JMB JDM  
 REVIEWER  
 JPH 08/01/22  
 PROJECT ID  
 103961  
 SUBSET TOTAL  
 11 19  
 SHEET TOTAL  
 P.23 31