

Curve #4
 P.I. Sta. 382+90.47
 $\Delta = 29^{\circ}00'19''$ Lt.
 $D = 00^{\circ}28'00''$
 $R = 12,277.67'$
 $L = 6,215.42'$
 $T = 3,175.82'$
 $E = 404.09'$

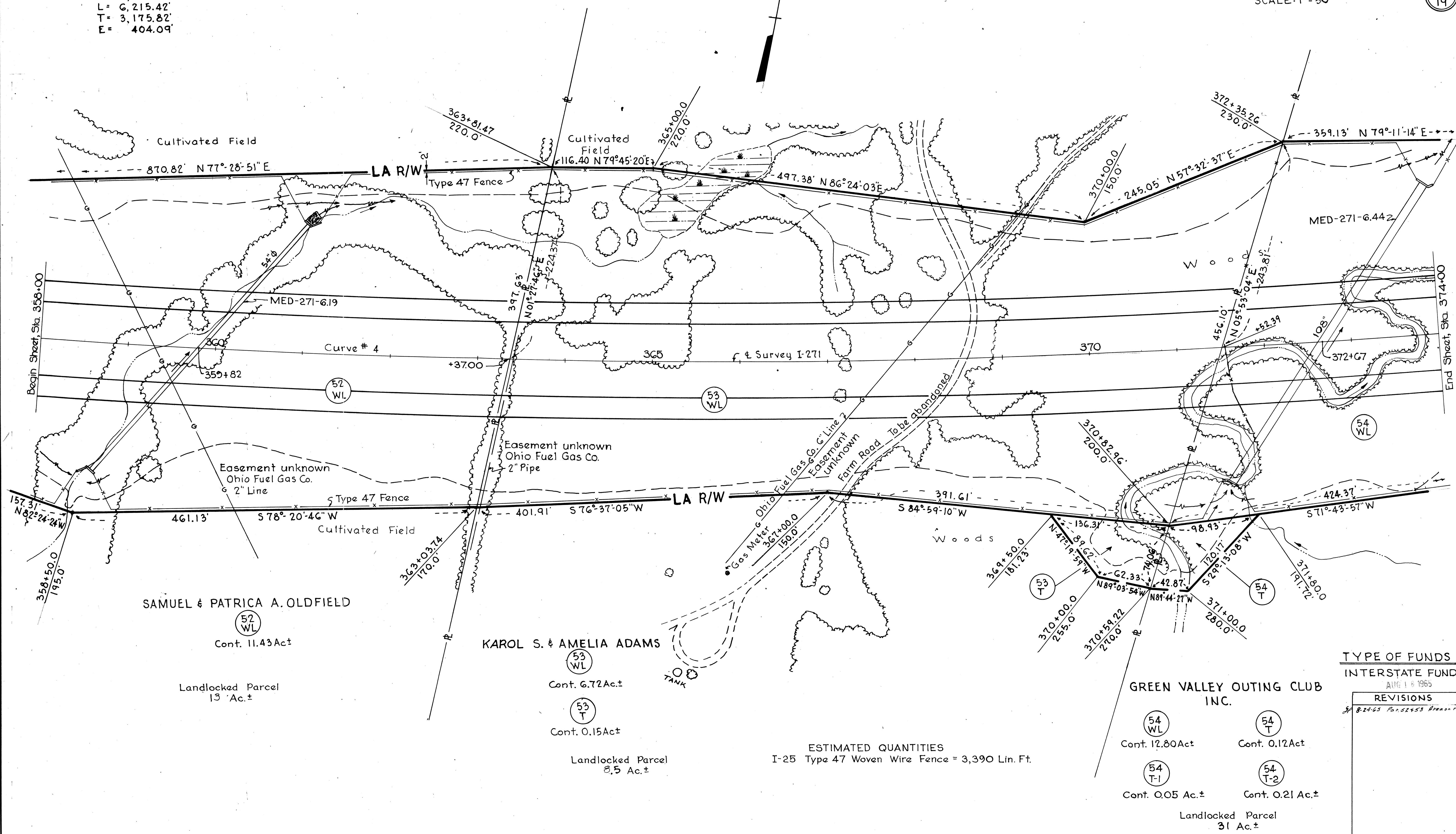
MEDINA COUNTY
 GRANGER TWP
 LOT 99
 T-3N R-13W

FED. RD. DIVISION	STATE	PROJECT
2	OHIO	I-271-G(14)224

MEDINA COUNTY
 MED/SUM-271-4.53/0.00
 LIMITED ACCESS
 SCALE: 1" = 50'

171
178

12
19



ESTIMATED QUANTITIES
 I-25 Type 47 Woven Wire Fence = 3,390 Lin. Ft.

TYPE OF FUNDS
 INTERSTATE FUND
 AUG 1 8 1965

REVISIONS
 BY 8-24-65 Per 52453 Branch

SAMUEL & PATRICA A. OLDFIELD
 (52 WL)
 Cont. 11.43 Ac.±

KAROL S. & AMELIA ADAMS
 (53 WL)
 Cont. 6.72 Ac.±
 (53 T)
 Cont. 0.15 Ac.±

GREEN VALLEY OUTING CLUB
 INC.
 (54 WL)
 Cont. 12.80 Ac.±
 (54 T-1)
 Cont. 0.05 Ac.±
 (54 T-2)
 Cont. 0.21 Ac.±
 Landlocked Parcel
 31 Ac.±

FED. RD. DIVISION	STATE	PROJECT
2	OHIO	I-271-G(14)224

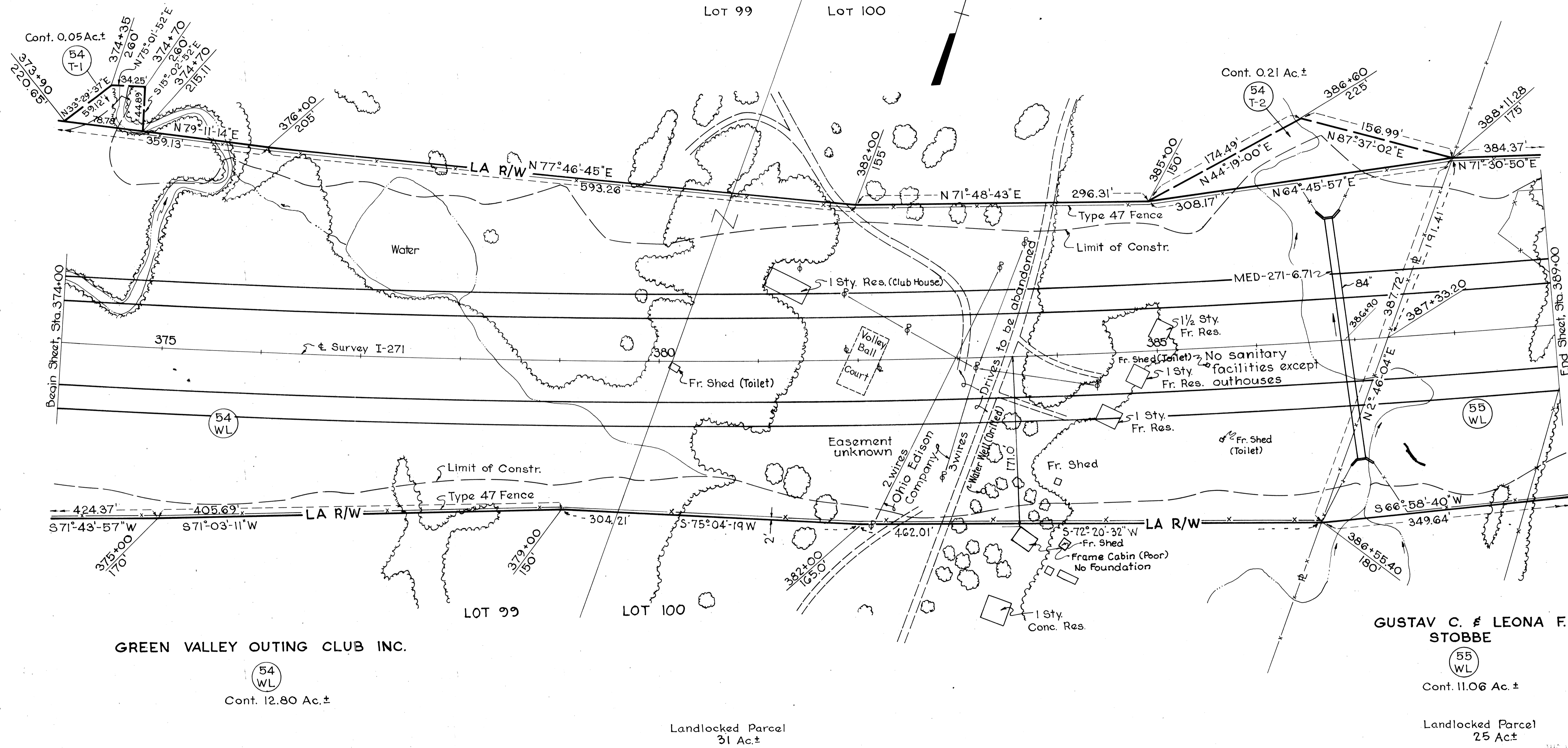
172
178

MEDINA COUNTY
MED/SUM-271-4.53/0.00
LIMITED ACCESS
SCALE: 1"=50'

13
19

CURVE *4
P.I. Sta. 382+90.47
 $\Delta = 29^{\circ}00'19''$ Lt.
D = $0^{\circ}28'00''$
R = 12,277.67'
L = 6,215.42'
T = 3,175.82'
E = 404.09'

MEDINA COUNTY
GRANGER TWP.
LOTS 99, 100
T-3N R-13W



GREEN VALLEY OUTING CLUB INC.

54
WL

Cont. 12.80 Ac.±

GUSTAV C. & LEONA F. STOBBE

55
WL

Cont. 11.06 Ac.±

Landlocked Parcel
31 Ac.±

Landlocked Parcel
25 Ac.±

ESTIMATED QUANTITIES
I-25 Type 47 Woven Wire Fence = 3,030 Lin. Ft.

TYPE OF FUNDS
INTERSTATE FUND

AUG 10 1965

REVISIONS
10/7/65 Topo. on Par. 54WL Corrected J.R.Z.