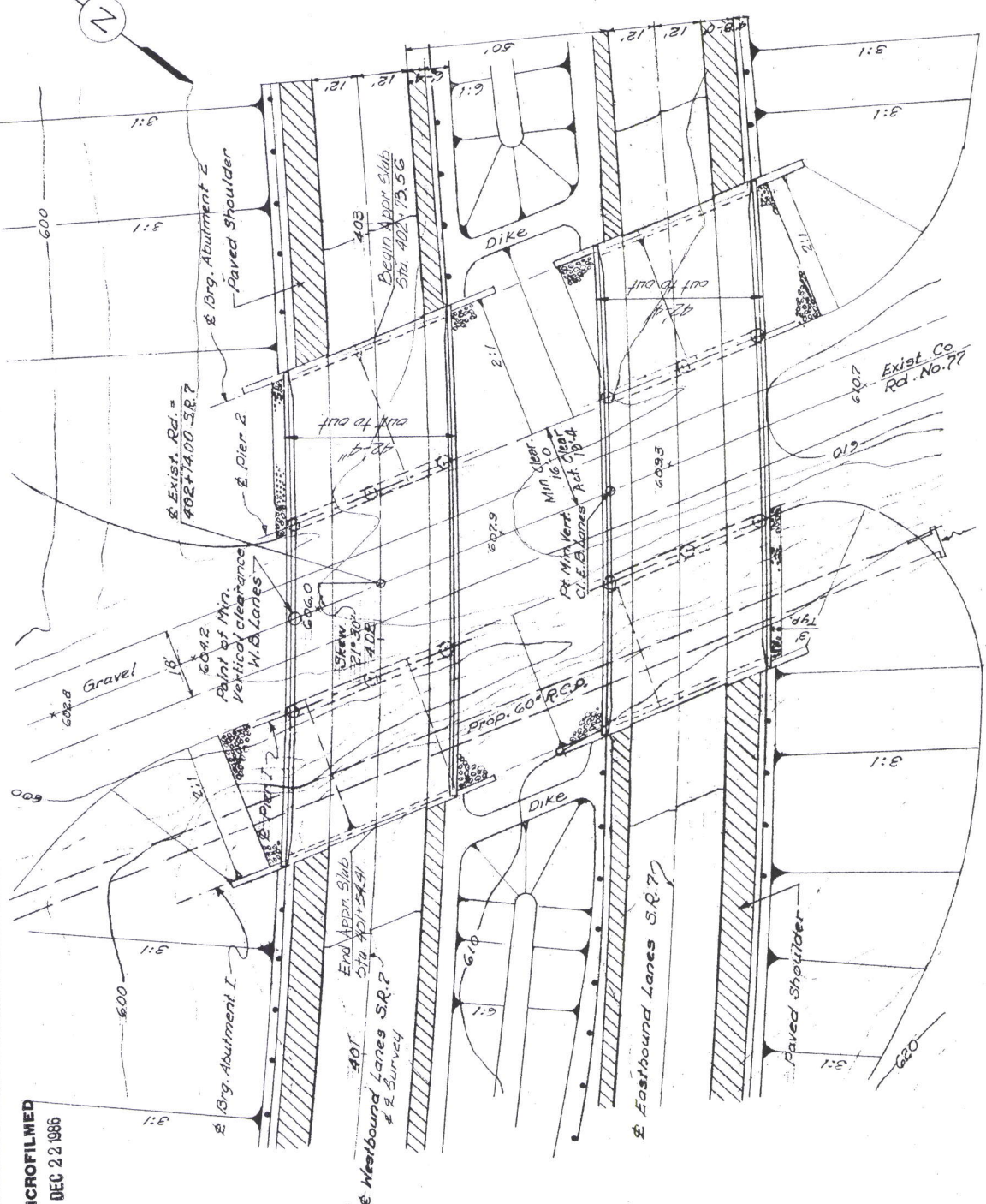
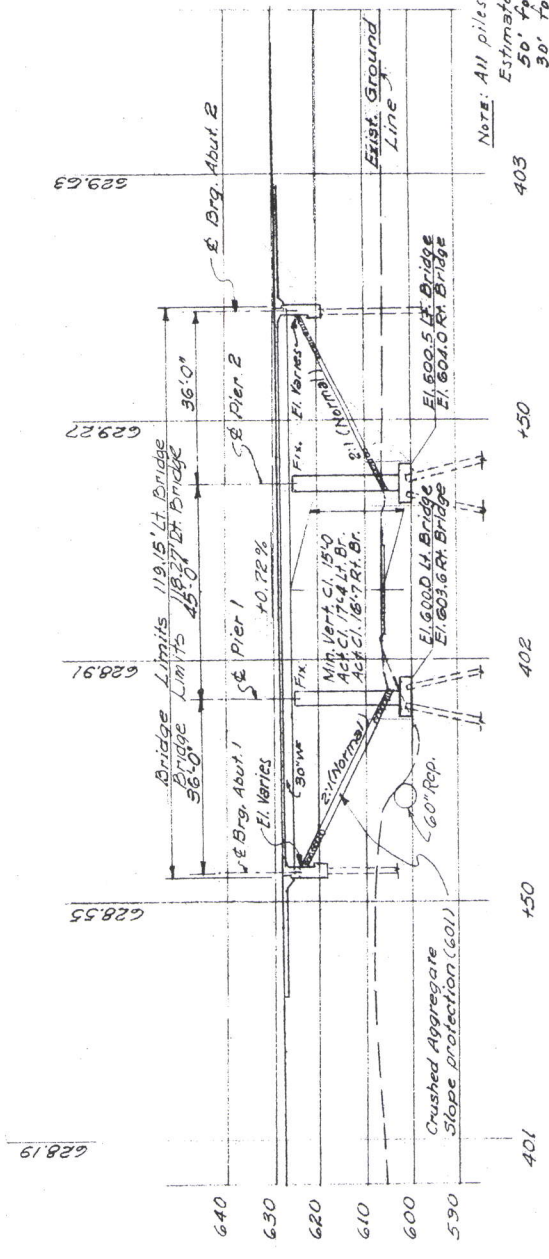


MICROFILMED
DEC 22 1986



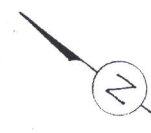
PLAN

NOTE: Earthwork limits shown are schematic. Actual slopes shall conform to plan cross-sections.



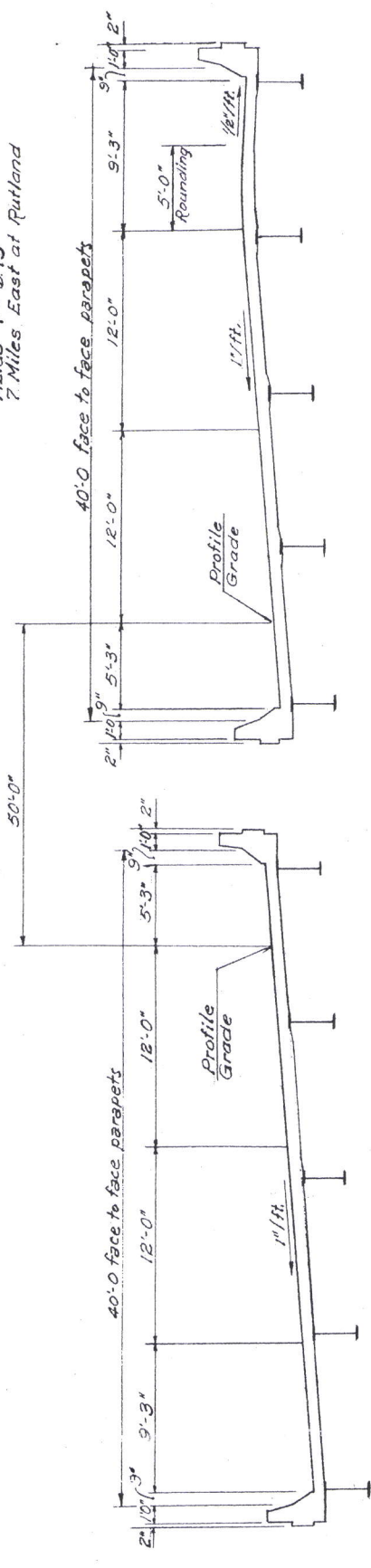
PROFILE ON & WESTBOUND LANES

NOTE: All piles HP10x42 steel piles. Estimated Ave. Pile Lengths: 50' for Abutments, 30' for Piers

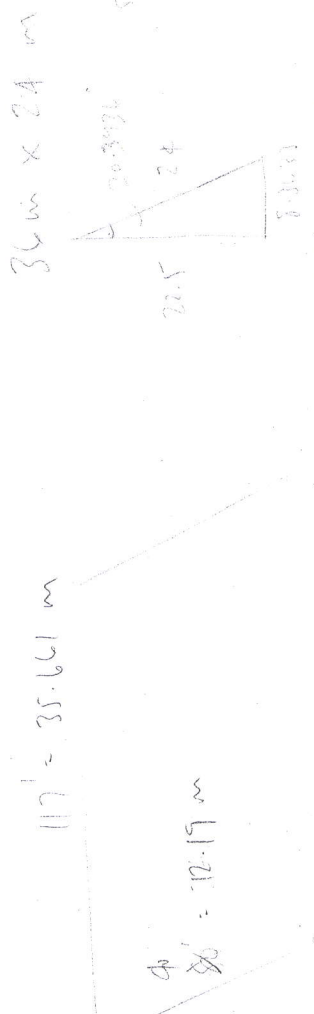


FED. RD. DISTRICT	STATE	PROJECT
2	OHIO	

MEIGS 7-G-15
7 Miles East of Rutland



SECTION THRU BRIDGE



WESTBOUND LANES CURVE DATA

Curve # 5
L.C. = 375.94'
P.I. Sta. = 402+35.58
L.S. = 400.00'
D = 31° 02' 15"
T.S. Sta. = 396+36.68'
Dc = 4° 00' 00"
R = 432.55'
S.T. Sta. = 400+12.61'

A.D.T. - 1990 - 5030

PROPOSED STRUCTURE

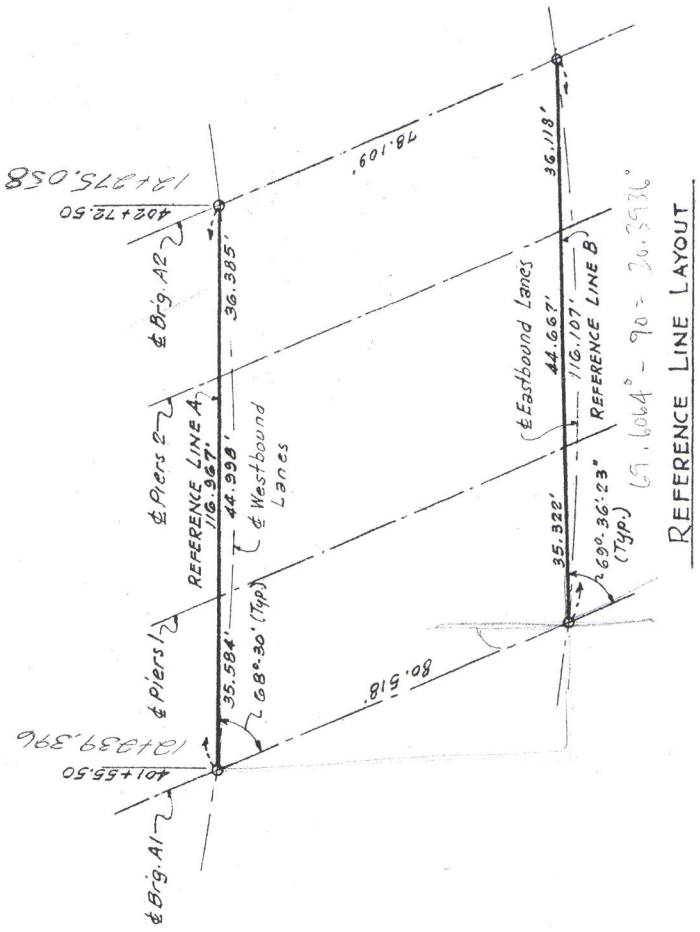
TYPE: Continuous rolled beam with reinforced concrete deck and substructure.
SPANS: 38'-0", 45'-0", 36'-0"
ROADWAY: Two with 4'-0" face to face of Parapets.
WEARING SURFACE: 1" Monolithic Concrete
LOADING: AASHTO HS 20-44
SKEW: 21° 30' R.F.
ALIGNMENT: 4° 0' Curve left.
SUPERELEVATION: 0.085 H/H.
APPROACH SLABS: AS 1-67 (35'-0" long)

AUBLE - MITCHELL - BURGESS & ASSOC.
ENGINEERS & ARCHITECT
1115

SITE PLAN 0761
BRIDGE No. MEIGS - 7-0761-1/2

S.R. 7 over Co. Road No. 77
MEIGS County Sta. 401+54.41
Sta. 402+79.56

PROPOSED WORK
DESIGNED DRAWN CHECKED REVISION
ERS



REFERENCE LINE LAYOUT

20.4°
SKEW

MICROFILMED
DEC 22 1986

407 467	PROJECT
2	STATE
OHIO	STATE

MEG-7-6.15

ESTIMATED QUANTITIES (TOTAL FOR TWO BRIDGES)

ITEM	TOTAL	UNIT	DESCRIPTION	ABUTMENTS	PIERS	SUPER-STRUCTURE	GENERAL	CHECKED BY & DATE
503	822	Cu. Yd.	Unclassified Excavation	605	207			LEN 9-70
505	Lump Sum		Test pile				Lump	
507	3,690	Lin. Ft.	Steel piles HP10x42	2,250	1,440			LEN 9-70
509	159,837	Lb.	Reinforcing Steel	19,425	94,139	100,272		LEN 9-70
511	437	Cu. Yd.	Class C concrete superstructure			437		LEN 9-70
511	190	Cu. Yd.	Class C concrete, pier caps & columns		190			LEN 9-70
511	130	Cu. Yd.	Class C concrete, abutments above footings	130				LEN 9-70
511	164	Cu. Yd.	Class C concrete, footings	93	71			LEN 9-70
512	211	Lin. Ft.	Premolded Sealing strip	211				LEN 9-70
513	147,250	Lb.	Structural steel			147,250		LEN 9-70
514	147,250	Lb.	Field painting of structural steel			147,250		
516	123	Sq. Ft.	1 in. preformed expansion joint filler	123				LEN 9-70
516	170	Sq. Ft.	1/4 in. preformed expansion joint filler	170				LEN 9-70
516	29	Sq. Ft.	3/4" thick elastomeric bearing pad		29			LEN 9-70
518	131	Cu. Yd.	Porous backfill	131				LEN 9-70
518	255	Lin. Ft.	6 in. perforated, helical C.M.P. including specials, 707.01	255				LEN 9-70
518	224	Lin. Ft.	6 in. non-perforated, helical C.M.P. 707.01	224				LEN 9-70
601	1175	Sq. Yd.	Crushed aggregate slope protection			437	1175	LEN 10-70
608	437	Units	Chemical admixtures for concrete Type A, B or D			437		
503	Lump Sum		Cofferdam, cribs, & sheeting				Lump	

GENERAL NOTES

REFERENCE SHALL BE MADE TO THE FOLLOWING:
 STANDARD DRAWINGS BR-1-67 revised 1-1-71
 SD-1-69 DATED 6-12-69
 AS-1-67 REVISED 6-12-69

SUPPLEMENTAL SPECIFICATIONS 808 DATED 1-1-71
 836 DATED 1-1-71

DESIGN SPECIFICATIONS: THIS STRUCTURE CONFORMS TO "STANDARD SPECIFICATIONS FOR HIGHWAY BRIDGES" ADOPTED BY THE AMERICAN ASSOCIATION OF STATE HIGHWAY OFFICIALS, 1965, INCLUDING THE OHIO "SUPPLEMENT" TO THESE SPECIFICATIONS.

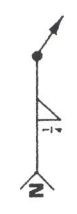
DESIGN DATA:
 DESIGN LOADING - HS 20-44
 CONCRETE CLASS C - UNIT STRESS 1200 P.S.I., FOR SUPERSTRUCTURE
 - UNIT STRESS 1333 P.S.I., FOR SUBSTRUCTURE
 STRUCTURAL STEEL - ASTM A36 - UNIT STRESS 20,000 P.S.I.,
 REINFORCING STEEL - ASTM A615, A616, OR A617 - UNIT STRESS 20,000 P.S.I., SPIRAL REINFORCEMENT BE PLAIN BARS ASTM A306, A499, A82 OR A615.

EMBANKMENT CONSTRUCTION: THE EMBANKMENTS SHALL BE CONSTRUCTED TO THE LEVEL OF THE SUBGRADE FOR A MINIMUM DISTANCE OF 200 FEET BACK OF THE ABUTMENTS. EXCAVATION SHALL THEN BE MADE FOR THE PIERS. AFTER A 60 DAY WAITING PERIOD EXCAVATION MAY PROCEED FOR THE ABUTMENTS.

PILES SHALL BE DRIVEN TO FIRM CONTACT WITH BEDROCK, IF THE LENGTH OF PENETRATION IS APPROXIMATELY EQUAL TO THE DEPTH OF BEDROCK ACCORDING TO THE BRIDGE FOUNDATION INVESTIGATION REPORT. THE FIRM CONTACT SHALL BE CONSIDERED AS ATTAINED WHEN THE CAPACITY ACCORDING TO THE FORMULA IN 507.05 IS NOT LESS THAN THE FOLLOWING VALUE FOR A PILE HAMMER OF THE INDICATED ENERGY RATING:
 FOR THE ABUTMENT PILES
 50 TONS PER PILE USING A 7000 FT. LB. HAMMER
 38 TONS PER PILE USING AN 11000 FT. LB. HAMMER
 35 TONS PER PILE USING A 15000 FT. LB. OR GREATER HAMMER
 FOR THE PIER PILES
 55 TONS PER PILE USING A 7000 FT. LB. HAMMER
 52 TONS PER PILE USING AN 11000 FT. LB. HAMMER
 48 TONS PER PILE USING A 15000 FT. LB. OR GREATER HAMMER
 IF THE ENERGY RATING OF THE HAMMER IS BETWEEN THE RATINGS AS SHOWN ABOVE, THE REQUIRED FORMULA CAPACITY SHALL BE DETERMINED BY INTERPOLATION. THE DESIGN LOAD IS 35 TONS PER PILE FOR THE ABUTMENT PILES AND 40 TONS PER PILE FOR THE PIER PILES.

MAINTENANCE OF TRAFFIC: TWO LANES OF TRAFFIC WITH A MINIMUM HORIZONTAL WIDTH OF 22'-0" AND A MINIMUM VERTICAL CLEARANCE OF 12'-9" SHALL BE MAINTAINED ON C.R. 77 AT ALL TIMES.

WELDS ON NON-STRESS CARRYING MEMBERS ARE SHOWN THUS:



AUBLE-MITCHELL-BURGESS & ASSOC.
 PROFESSIONAL ENGINEERS
 CINCINNATI, OHIO

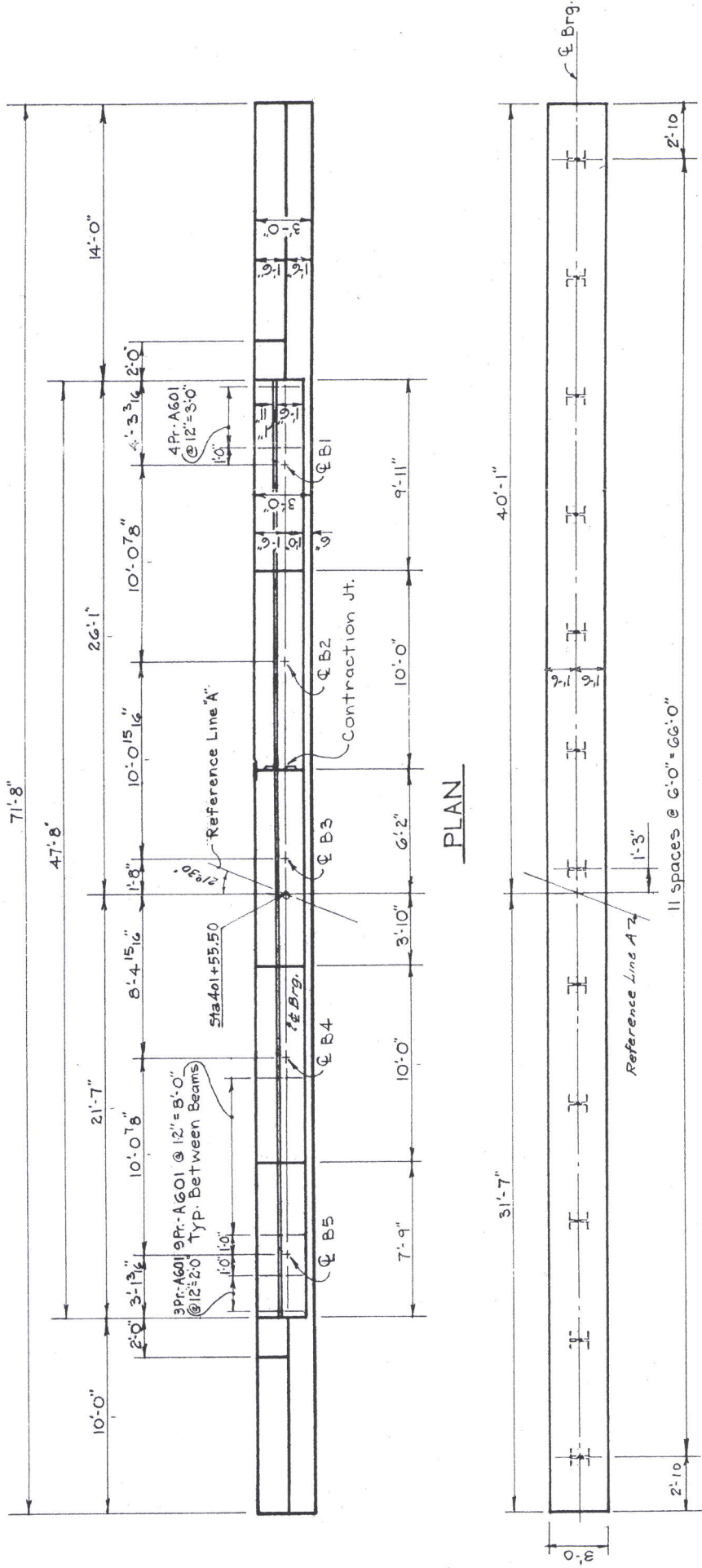
ESTIMATED QUANTITIES & GENERAL NOTES
 BRIDGE NO. MEG. 7-0762 L/R
 S.R. 7 OVER CO. ROAD NO. 77
 MEIGS COUNTY STA. 401 + 54.41 TO STA. 402 + 73.56

Designed	Drawn	Traced	Checked	Date
				LEN 10-70

DES. NO. DIVISION	PROJECT
2	OHIO

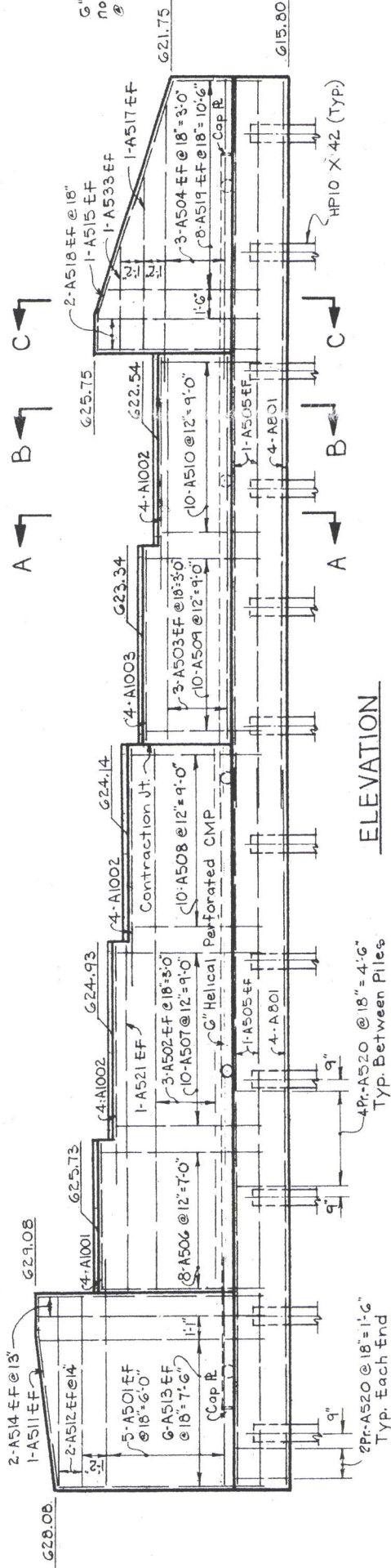
MEG-7-G.15

408
467

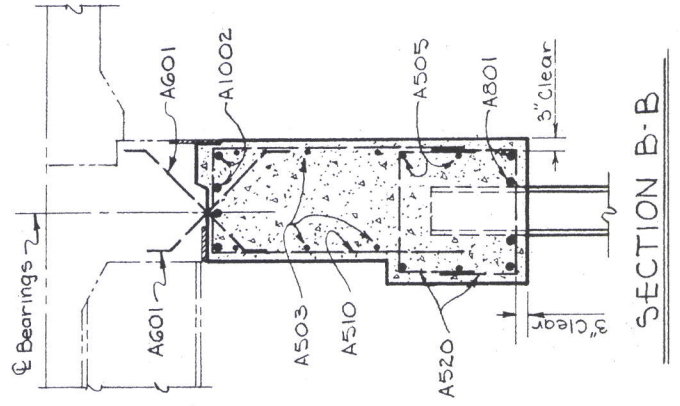


PLAN

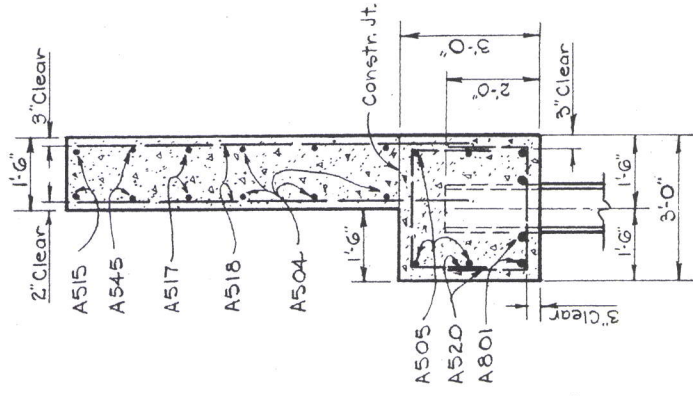
FOOTING PLAN



ELEVATION



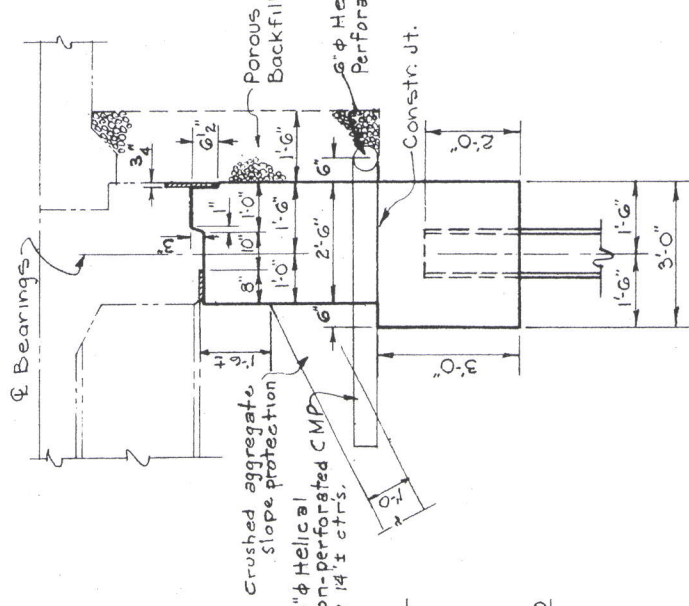
SECTION B-B



SECTION C-C

NOTES:

1. Porous backfill shall extend upward to the subgrade and to the surface of the earth shoulders, and outward to the surface of the embankment slope.
2. For contraction joint detail see Sh. 4.
3. For Reference Line Layout see Sh. 1.
4. For Reinforcing Steel List see Sh. 14.



LEGEND:

- E.F. = Each Face
- N.F. = Near Face
- F.F. = Far Face

SECTION A-A

AUBLE-MITCHELL-BURGESS & ASSOC.
ENGINEERS
CINCINNATI, OHIO

3/15

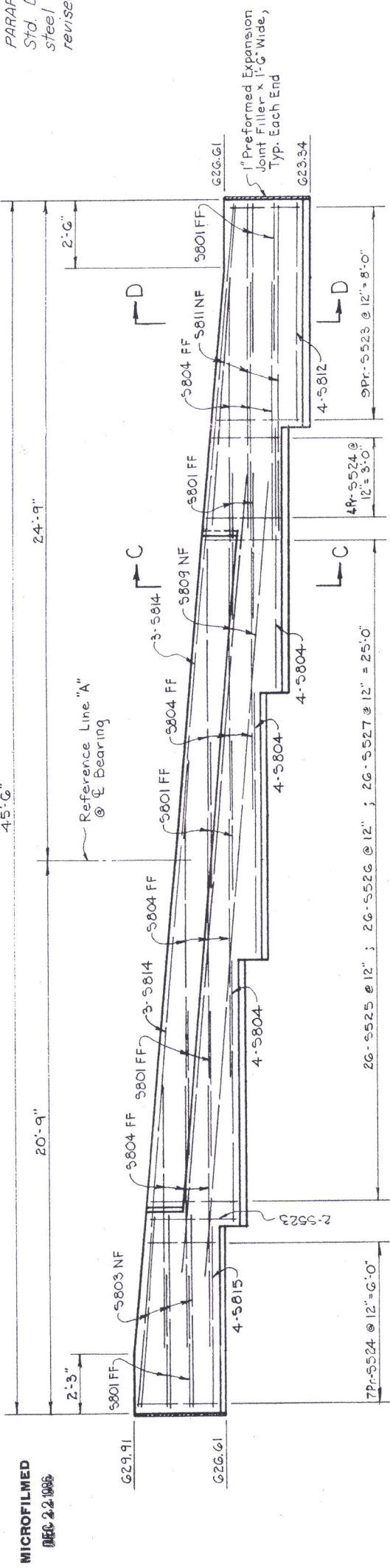
ABUTMENT I
LEFT BRIDGE
BRIDGE NO. MEG-7-0762 L/R
S.R.7 OVER CO. ROAD NO. 77
MEIGS COUNTY STA. 401 + 54.41 TO
STA. 402 + 73.56

Designed	Checked	Date
RBK	ERB	LEN 10-70

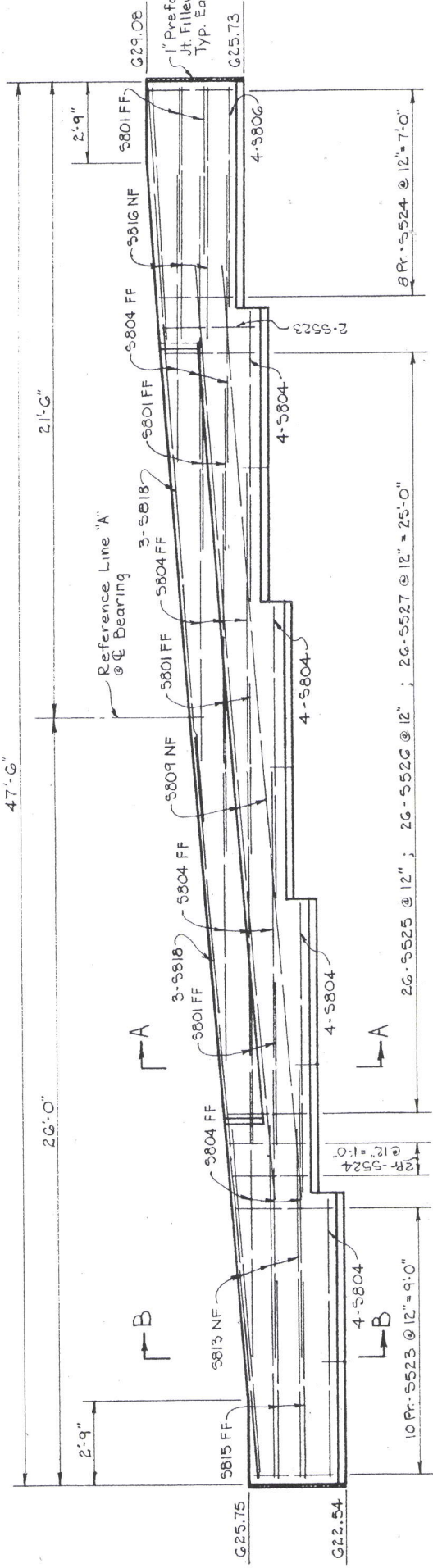
FILE NO.	STATE	PROJECT
2	OHIO	

MEG-7-G.13

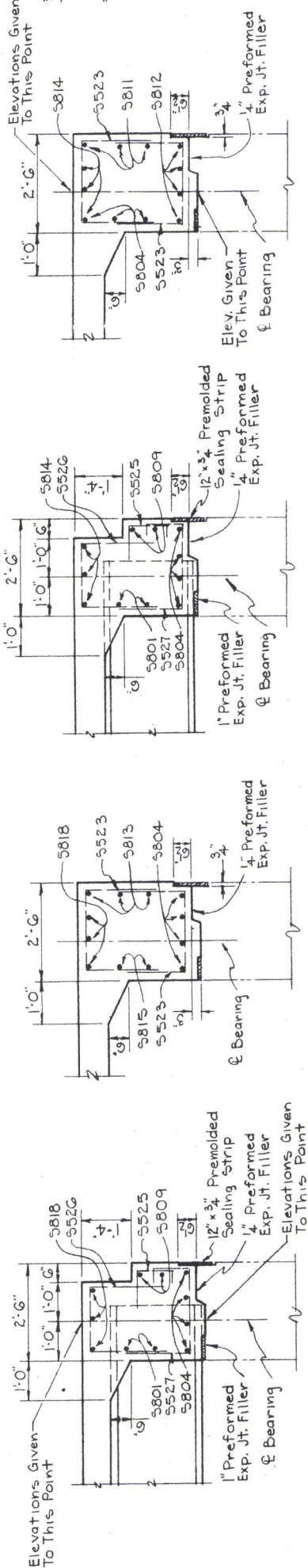
PARAPET TRANSITIONS shall be as shown on Std. Drwg. BR-1-67 revised 1-1-71. Reinforcing steel shall be field bent or cut to fit the revised shape.



VIEW C-C
AT ABUTMENT 2, LEFT BRIDGE



VIEW B-B
AT ABUTMENT 1, LEFT BRIDGE

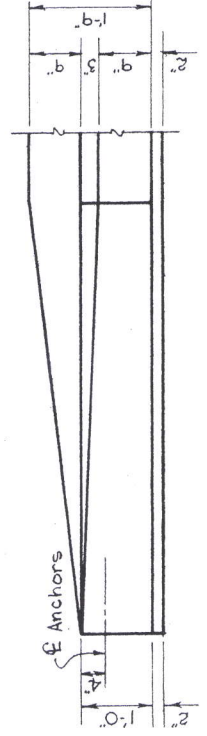


SECTION A-A

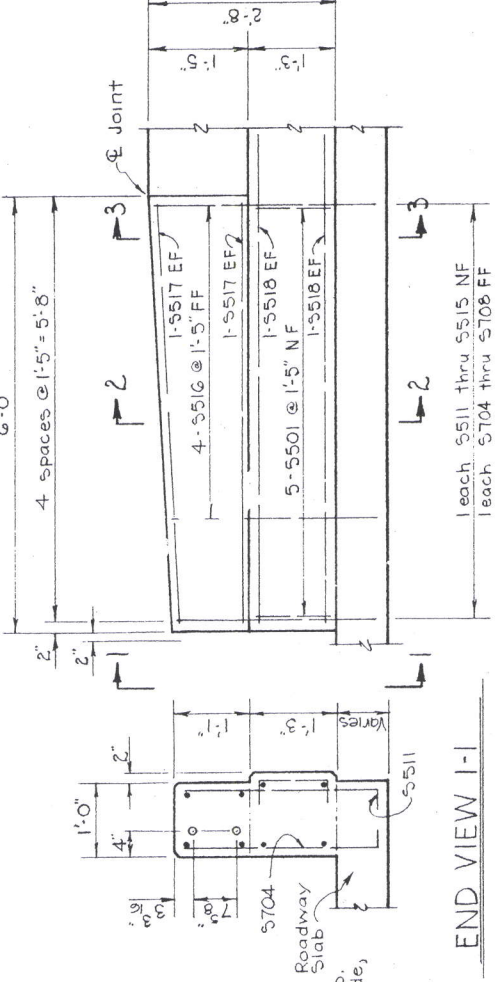
SECTION B-B

SECTION C-C

SECTION D-D



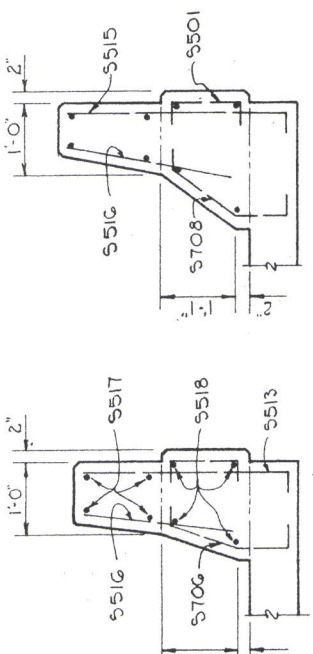
PLAN



ELEVATION

DETAILS - PARAPET PANELS P1 - END TRANSITION SECTION

END VIEW I-I



SECTION 2-2

SECTION 3-3

NOTES:
For location of Views B-B & C-C see Sh. 10
For reinforcing steel list see Sh. 14
For additional railing details see
Std. Drwg. BR-1-G7

LEGEND
E.F. = Each Face
N.F. = Near Face
F.F. = Far Face

AUBLE-MITCHELL-BURGESS & ASSOC.
ENGINEERS ARCHITECTS
INCORPORATED
OHIO

SUPERSTRUCTURE
ROADWAY SLAB DETAILS
BRIDGE NO. MEG.-7-0762 1/2R
S.R.7 OVER CO. ROAD NO. 77
MEIGS COUNTY STA. 401 + 54.41 TO
STA. 402 + 73.56

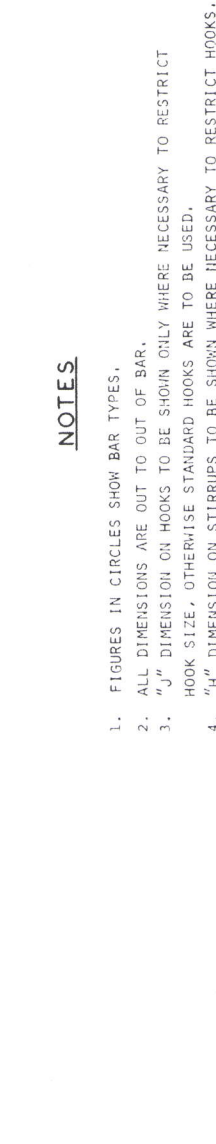
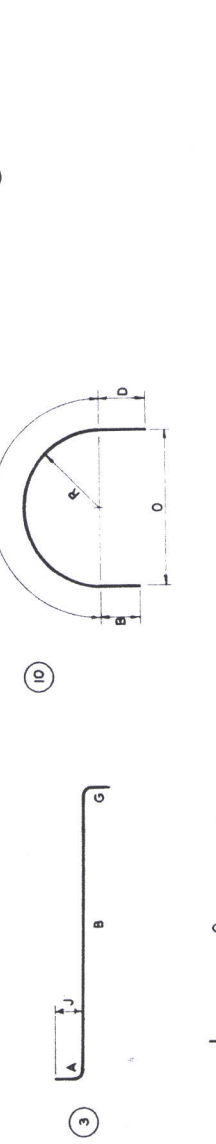
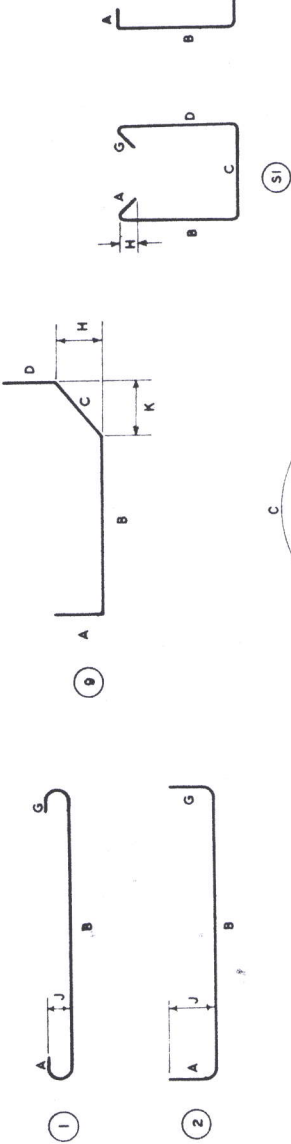
Drawn	Checked	Date
ERB	ERB	LEN 10-70

MICROFILMED
DEC 22 1986

420
467

FED. AID DISTRICT	PROJECT
2	OHIO

MEG-T-G-15



NOTES

- FIGURES IN CIRCLES SHOW BAR TYPES.
- ALL DIMENSIONS ARE OUT TO OUT OF BAR.
- "J" DIMENSION ON HOOKS TO BE SHOWN ONLY WHERE NECESSARY TO RESTRICT HOOK SIZE, OTHERWISE STANDARD HOOKS ARE TO BE USED.
- "H" DIMENSION ON STIRRUPS TO BE SHOWN WHERE NECESSARY TO RESTRICT HOOKS.
- ALL BENDS SHOWN ARE BENT AROUND A STANDARD MANDREL, EXCEPT SPIRALS SPI, AND WHERE RADIUS "R" IS INDICATED.
- RADIUS DIMENSION "R" IS TO OUTSIDE OF BAR.
- THE LENGTH OF BENT BARS IS MEASURED ALONG THE CENTERLINE.
- FOR STANDARD HOOK DIMENSIONS, SEE SECT. 509.05 OF THE SPECIFICATIONS.
- FOR BAR TYPE SPI, THE NO OF TURNS "D" IS THE LENGTH "C" DIVIDED BY THE PITCH "B", PLUS 3 TURNS (TOTAL NUMBER OF CLOSED COILS), EXPRESSED AS THE NEAREST WHOLE NUMBER. 1/2 CLOSED COILS SHALL BE PROVIDED AT THE ENDS OF EACH SPIRAL UNIT.

MARK TYPE	A	B	C	D	E	F	G	H	J	K	R	O
A506 S3	8'-6"	2'-0"	2'-0"	3'-6"								
A507 S3	7'-8"	2'-0"	2'-0"	7'-8"								
A508 S5	6'-10"	2'-0"	2'-0"	6'-10"								
A509 S3	5'-2"	2'-0"	2'-0"	5'-2"								
A510 S3	7'-10"	1'-10"	1'-10"					0'-3"	1'-10"			
A511 S	12'-6"	1'-10"	1'-10"					0'-8"	1'-5"			
A520 S3	2'-0"	2'-0"	2'-0"	2'-0"				0'-3"	1'-0"			
A521 S	8'-4"	7'-10"	7'-10"									
A525 S	3'-11"	7'-10"	7'-10"									
A601 6	0'-8"	2'-11"	2'-11"	0'-8"				0'-6"	0'-6"	0'-6"		3'-11"
A501 S3	5'-7"	2'-8"	2'-8"	5'-7"								
A502 2	1'-1"	5'-6"	5'-6"									
A503 10	3'-5"	4'-2"	4'-2"	5'-9"				5'-5"			1'-4"	2'-8"
A504 8	10'-0"	3'-5"	3'-5"	10'-0"				3'-5"		0'-5"		
A505 8	10'-0"	3'-5"	3'-5"									
A506 8	10'-0"	3'-5"	3'-5"									
A507 8	10'-0"	3'-5"	3'-5"									
A508 8	10'-0"	3'-5"	3'-5"									
A509 8	10'-0"	3'-5"	3'-5"									
A510 8	10'-0"	3'-5"	3'-5"									
A511 8	10'-0"	3'-5"	3'-5"									
A512 8	10'-0"	3'-5"	3'-5"									
A513 8	10'-0"	3'-5"	3'-5"									
A514 8	10'-0"	3'-5"	3'-5"									
A515 8	10'-0"	3'-5"	3'-5"									
A516 8	10'-0"	3'-5"	3'-5"									
A517 8	10'-0"	3'-5"	3'-5"									
A518 8	10'-0"	3'-5"	3'-5"									
A519 8	10'-0"	3'-5"	3'-5"									
A520 8	10'-0"	3'-5"	3'-5"									
A521 8	10'-0"	3'-5"	3'-5"									
A522 8	10'-0"	3'-5"	3'-5"									
A523 8	10'-0"	3'-5"	3'-5"									
A524 8	10'-0"	3'-5"	3'-5"									
A525 8	10'-0"	3'-5"	3'-5"									
A526 8	10'-0"	3'-5"	3'-5"									
A527 8	10'-0"	3'-5"	3'-5"									
A528 8	10'-0"	3'-5"	3'-5"									
A529 8	10'-0"	3'-5"	3'-5"									
A530 8	10'-0"	3'-5"	3'-5"									
A531 8	10'-0"	3'-5"	3'-5"									
A532 8	10'-0"	3'-5"	3'-5"									
A533 8	10'-0"	3'-5"	3'-5"									
A534 8	10'-0"	3'-5"	3'-5"									
A535 8	10'-0"	3'-5"	3'-5"									
A536 8	10'-0"	3'-5"	3'-5"									
A537 8	10'-0"	3'-5"	3'-5"									
A538 8	10'-0"	3'-5"	3'-5"									
A539 8	10'-0"	3'-5"	3'-5"									
A540 8	10'-0"	3'-5"	3'-5"									
A541 8	10'-0"	3'-5"	3'-5"									
A542 8	10'-0"	3'-5"	3'-5"									
A543 8	10'-0"	3'-5"	3'-5"									
A544 8	10'-0"	3'-5"	3'-5"									
A545 8	10'-0"	3'-5"	3'-5"									
A546 8	10'-0"	3'-5"	3'-5"									
A547 8	10'-0"	3'-5"	3'-5"									
A548 8	10'-0"	3'-5"	3'-5"									
A549 8	10'-0"	3'-5"	3'-5"									
A550 8	10'-0"	3'-5"	3'-5"									
A551 8	10'-0"	3'-5"	3'-5"									
A552 8	10'-0"	3'-5"	3'-5"									
A553 8	10'-0"	3'-5"	3'-5"									
A554 8	10'-0"	3'-5"	3'-5"									
A555 8	10'-0"	3'-5"	3'-5"									
A556 8	10'-0"	3'-5"	3'-5"									
A557 8	10'-0"	3'-5"	3'-5"									
A558 8	10'-0"	3'-5"	3'-5"									
A559 8	10'-0"	3'-5"	3'-5"									
A560 8	10'-0"	3'-5"	3'-5"									
A561 8	10'-0"	3'-5"	3'-5"									
A562 8	10'-0"	3'-5"	3'-5"									
A563 8	10'-0"	3'-5"	3'-5"									
A564 8	10'-0"	3'-5"	3'-5"									
A565 8	10'-0"	3'-5"	3'-5"									
A566 8	10'-0"	3'-5"	3'-5"									
A567 8	10'-0"	3'-5"	3'-5"									
A568 8	10'-0"	3'-5"	3'-5"									
A569 8	10'-0"	3'-5"	3'-5"									
A570 8	10'-0"	3'-5"	3'-5"									
A571 8	10'-0"	3'-5"	3'-5"									
A572 8	10'-0"	3'-5"	3'-5"									
A573 8	10'-0"	3'-5"	3'-5"									
A574 8	10'-0"	3'-5"	3'-5"									
A575 8	10'-0"	3'-5"	3'-5"									
A576 8	10'-0"	3'-5"	3'-5"									
A577 8	10'-0"	3'-5"	3'-5"									
A578 8	10'-0"	3'-5"	3'-5"									
A579 8	10'-0"	3'-5"	3'-5"									
A580 8	10'-0"	3'-5"	3'-5"									
A581 8	10'-0"	3'-5"	3'-5"									
A582 8	10'-0"	3'-5"	3'-5"									
A583 8	10'-0"	3'-5"	3'-5"									
A584 8	10'-0"	3'-5"	3'-5"									
A585 8	10'-0"	3'-5"	3'-5"									
A586 8	10'-0"	3'-5"	3'-5"									
A587 8	10'-0"	3'-5"	3'-5"									
A588 8	10'-0"	3'-5"	3'-5"									
A589 8	10'-0"	3'-5"	3'-5"									
A590 8	10'-0"	3'-5"	3'-5"									
A591 8	10'-0"	3'-5"	3'-5"									
A592 8	10'-0"	3'-5"	3'-5"									
A593 8	10'-0"	3'-5"	3'-5"									
A594 8	10'-0"	3'-5"	3'-5"									
A595 8	10'-0"	3'-5"	3'-5"									
A596 8	10'-0"	3'-5"	3'-5"									
A597 8	10'-0"	3'-5"	3'-5"									
A598 8	10'-0"	3'-5"	3'-5"									
A599 8	10'-0"	3'-5"	3'-5"									
A600 8	10'-0"	3'-5"	3'-5"									

AUBLE-MITCHELL-BURGESS & ASSOC. 15 / 15
ENGINEERS AND ARCHITECTS
CINCINNATI, OHIO

BAR BENDING DETAILS
BRIDGE NO. MEG. - 7-0762 L/R
S.R. 7 OVER CO. ROAD NO. 77
STA. 401 + 54.41 TO
MEIGS COUNTY STA. 402 + 73.56

Designed _____
Drawn _____
Checked _____
Reviewed _____
Date _____
LEN 10-70
Revised _____