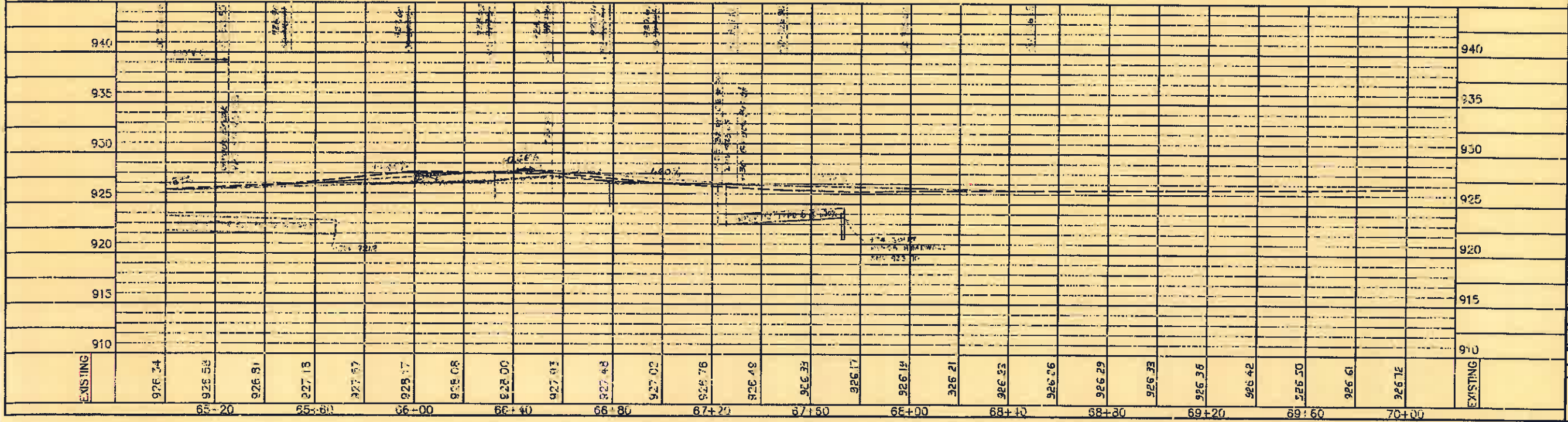
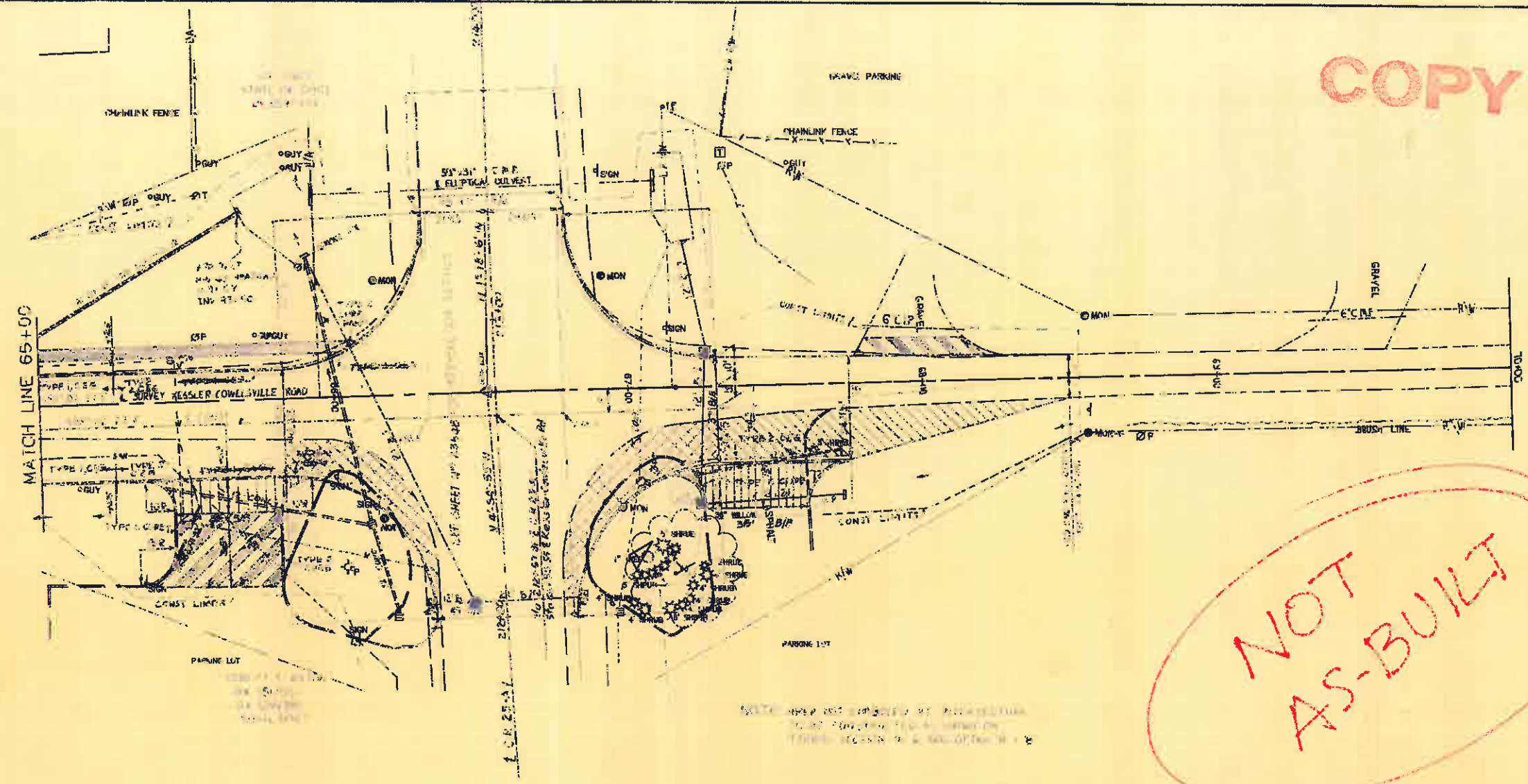


COPY

NOT AS-BUILT



FILE NAME	
NUMBER	DATE
REVISIONS	COMMENTS

CITY OF TIPP CITY
 KESSLER-COWLESVILLE ROAD
 PLAN AND PROFILE STA. 65+00 TO STA. 70+00

WORLD & Associates, Inc.
 Consulting Engineers & Surveyors
 1000 Washington Blvd., Ste. 400
 (615) 462-1000 FAX 1013 462-0105

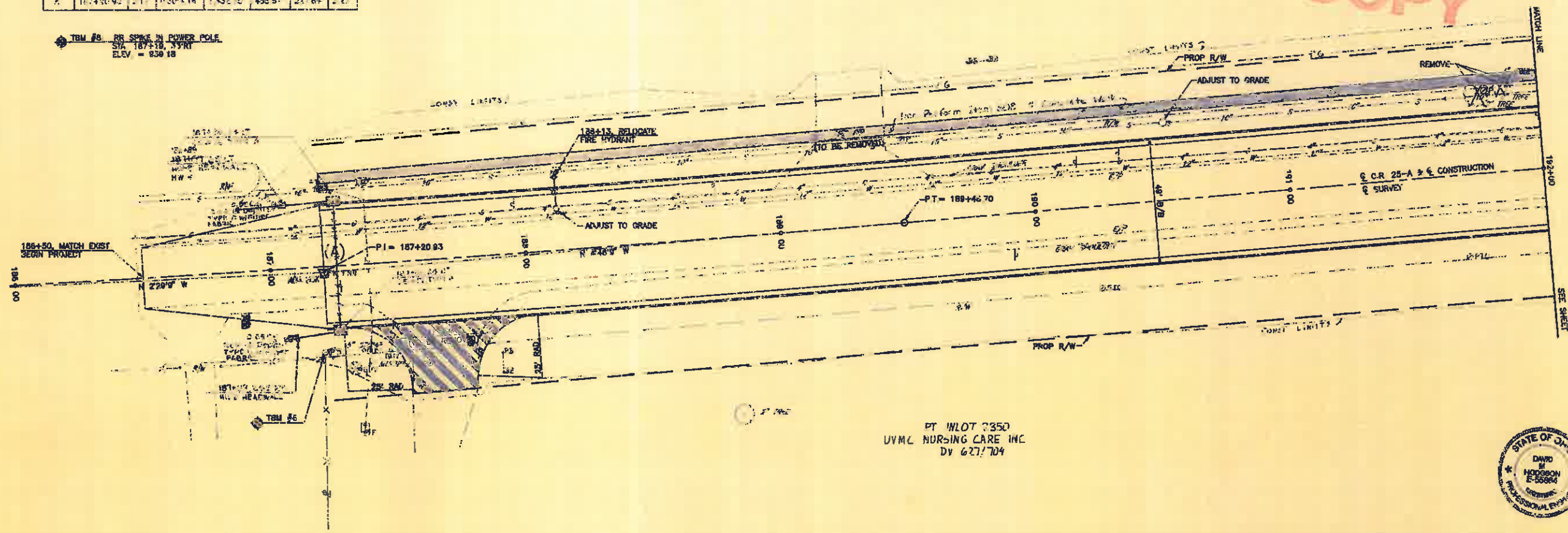
DRAWN BY: KLR
 CHECKED BY:
 DATE: MAY 1992
 SHEET NUMBER: 18 OF 60

HORIZONTAL CURVE DATA							
CURVE	PI	Δ	D	E	L	T	T
A	187420.92	217°	1320' x 16'	1458.10	458.81'	217.84'	2.27'

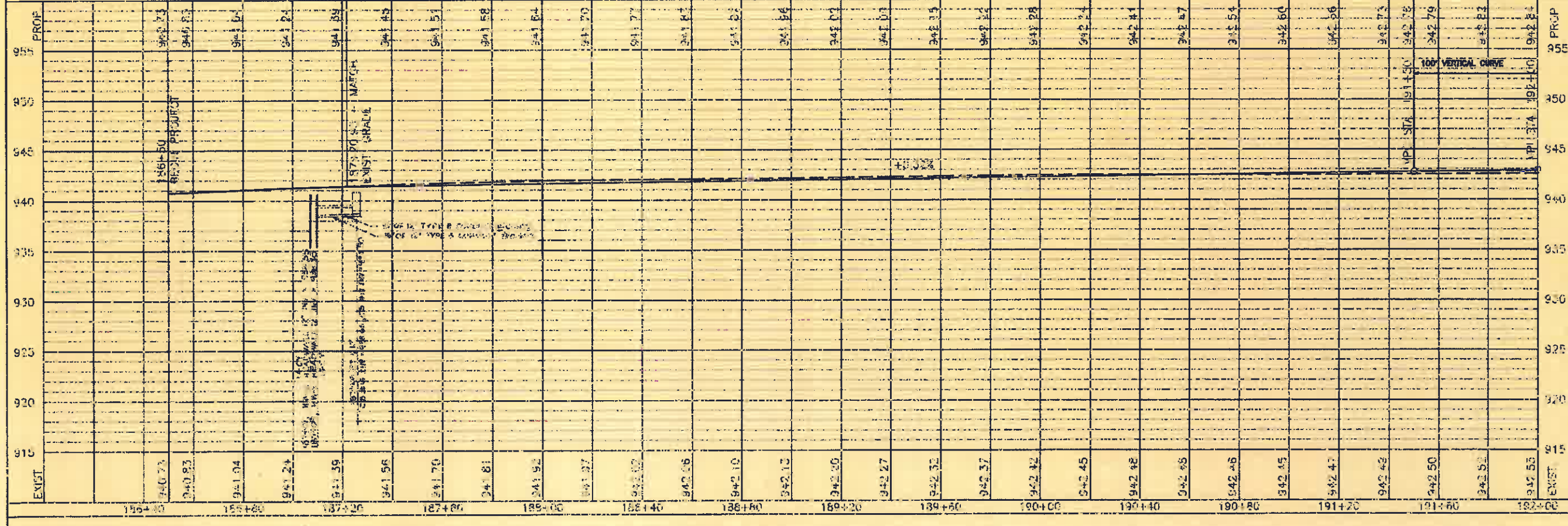
TBM #8 RR SPIKE IN POWER POLE
 STA 187418.35VPT
 ELEV = 838.18

LOT 2347
 MEIJER PROPERTIES, INC
 DV 632,767

COPY



PT W/LOT 3350
 UYMC NURSING CARE INC
 DV 627,704



DESIGNED BY	JAC/DRE P/92	CHECKED BY	JAC	DATE	8/92
DRAWN BY	JAD	DATE	5/92	APPROVED BY	DMH/DOB 5/92
JOB NUMBER	50061	CAD REFERENCE	00114P1		

DESIGNED BY JAC/DRE P/92
 CHECKED BY JAC
 DATE 8/92
 DRAWN BY JAD
 DATE 5/92
 APPROVED BY DMH/DOB 5/92
 JOB NUMBER 50061
 CAD REFERENCE 00114P1

PLAN & PROFILE
STA 186+50 TO STA 192+00
 WEIJER OFFSITE WORK PROGRAM
 COUNTY ROAD 25-A RECONSTRUCTION

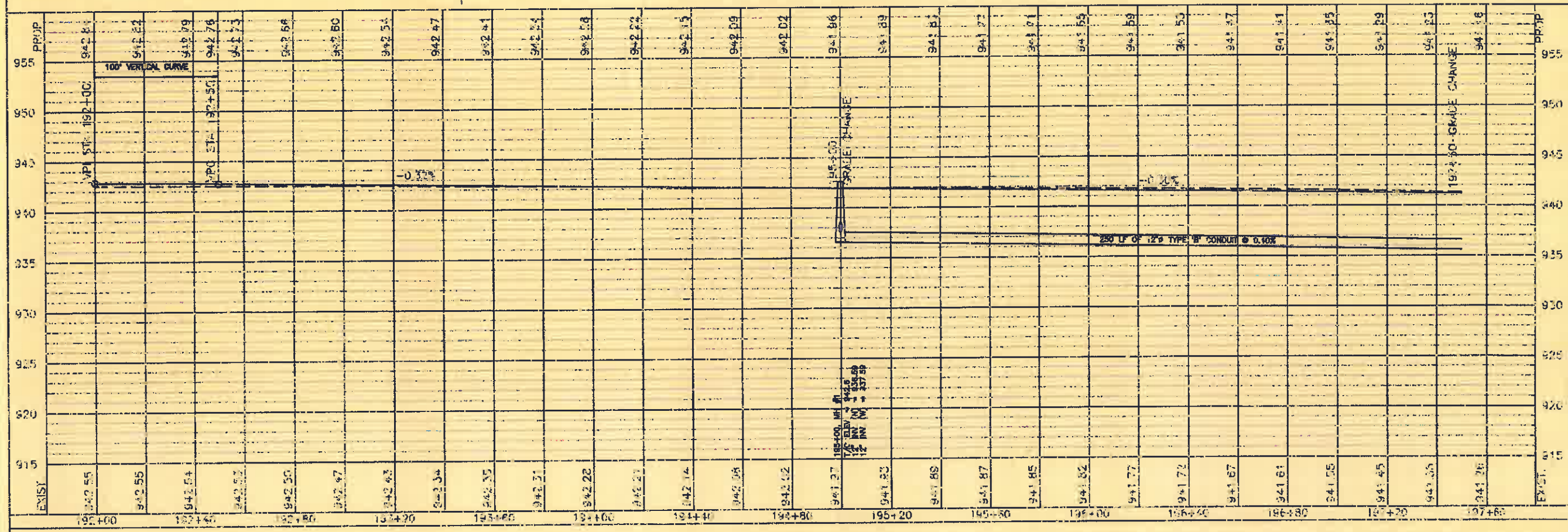
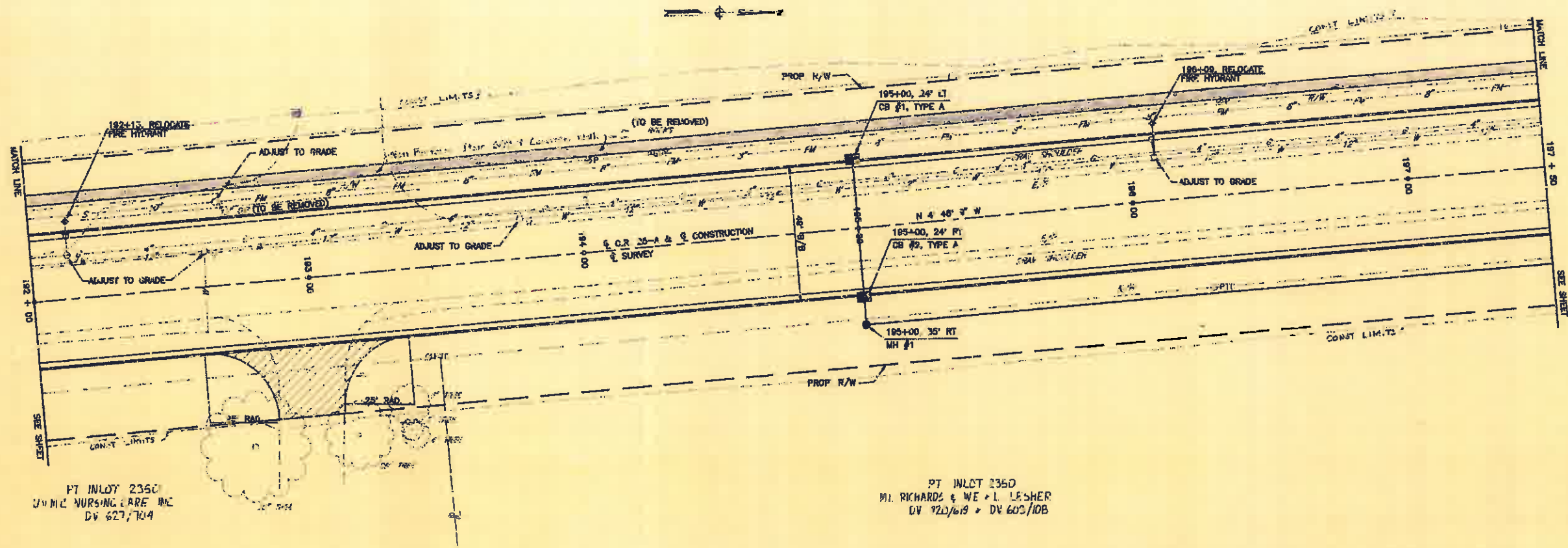


HORIZ: 1"=20'
 VERT: 1"=5'
 Sheet
 19 of 60

CITY OF TIPP CITY, OHIO

LOT 2377
MEYER PROPERTIES, INC
DV 6821767

COPY



PLAN & PROFILE
STA 192+00 TO STA 197+50
MEYER OFFSITE WORK PROGRAM
COUNTY ROAD 25-A RECONSTRUCTION



Scale
HORIZ: 1"=20'
VERT: 1"=5'
Sheet
20 of 60

Reviewed by JAC Date: 8/92
Checked by JAC Date: 8/92
Approved by JAC Date: 8/92
Job Number: 92061
Cut References: 20610P2

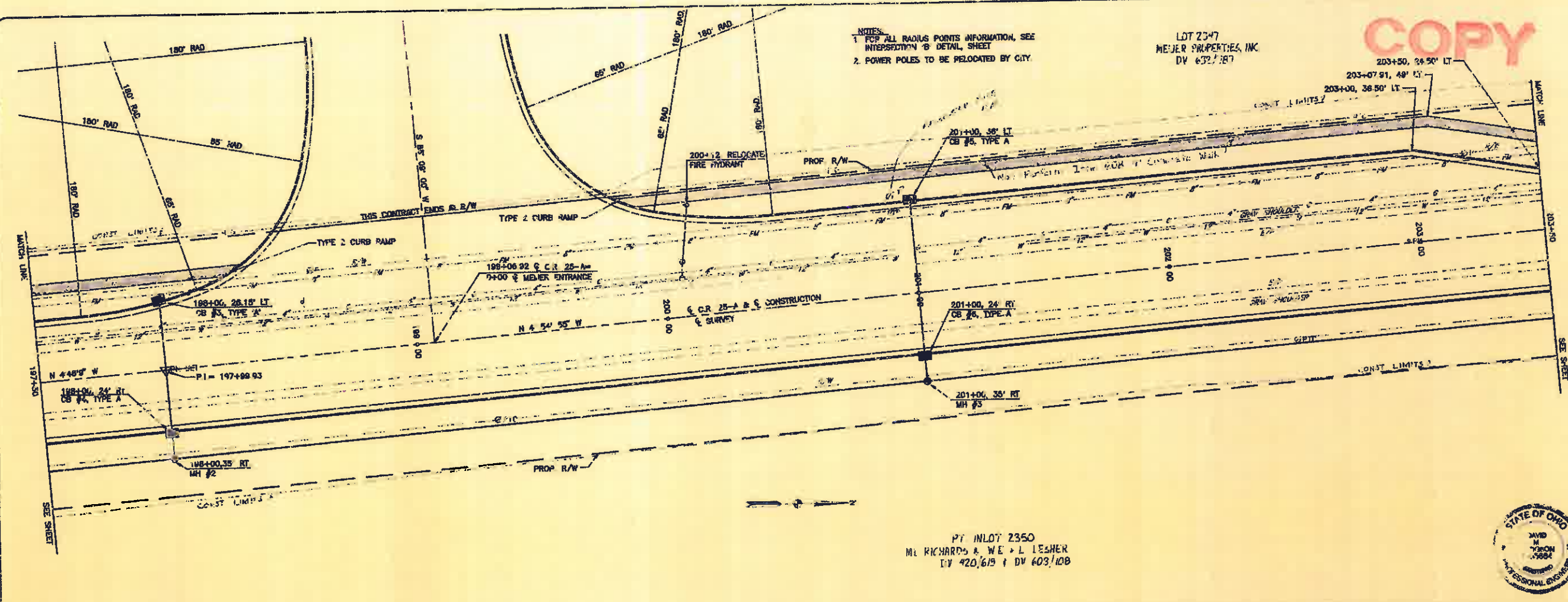
CITY OF TIPP CITY, OHIO

Revision	Date	Description
1	8/92	Initial Design
2	8/92	Final Design

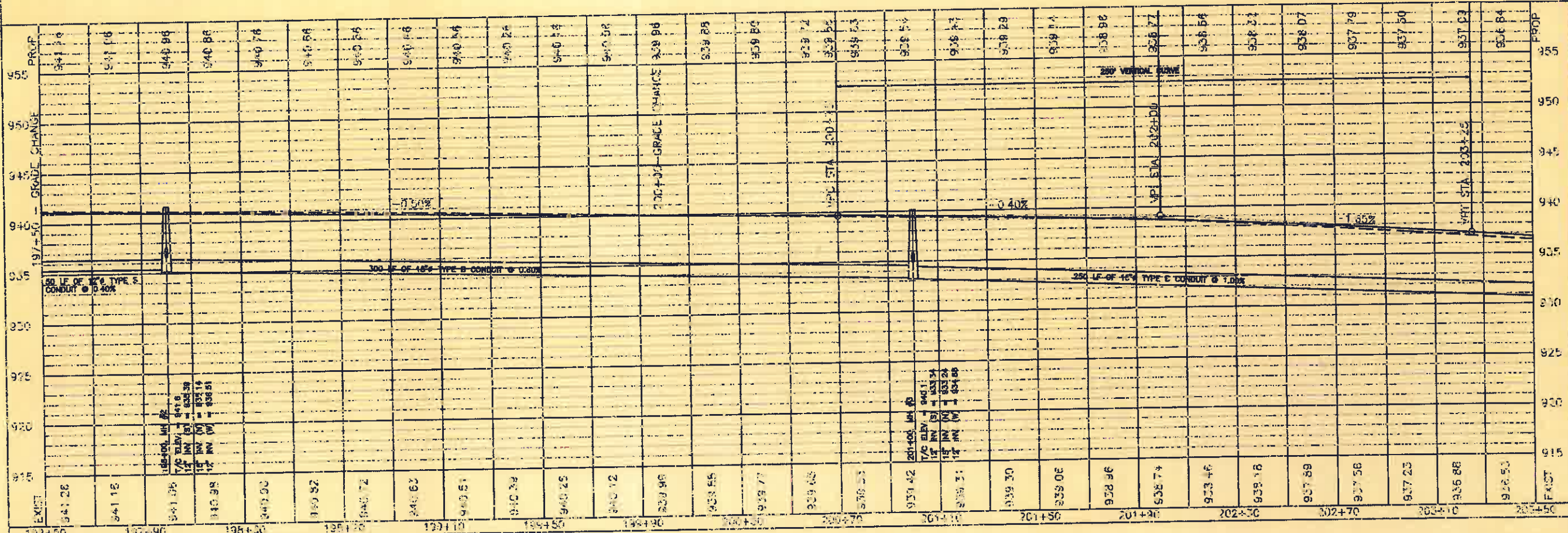
NOTES:
 1. FOR ALL RADIUS POINTS INFORMATION, SEE INTERSECTION 'B' DETAIL SHEET.
 2. POWER POLES TO BE RELOCATED BY CITY.

LOT 2347
 MEIJER PROPERTIES, INC.
 DV 6327187

COPY



PT IN LOT 2350
 M.L. RICHARDS & W.E. L. LESHER
 DV 420,619 + DV 403,108



PLAN & PROFILE
STA 197+50 TO STA 203+50
 MEIJER OFFSITE WORK PROGRAM
 COUNTY ROAD 25-A RECONSTRUCTION



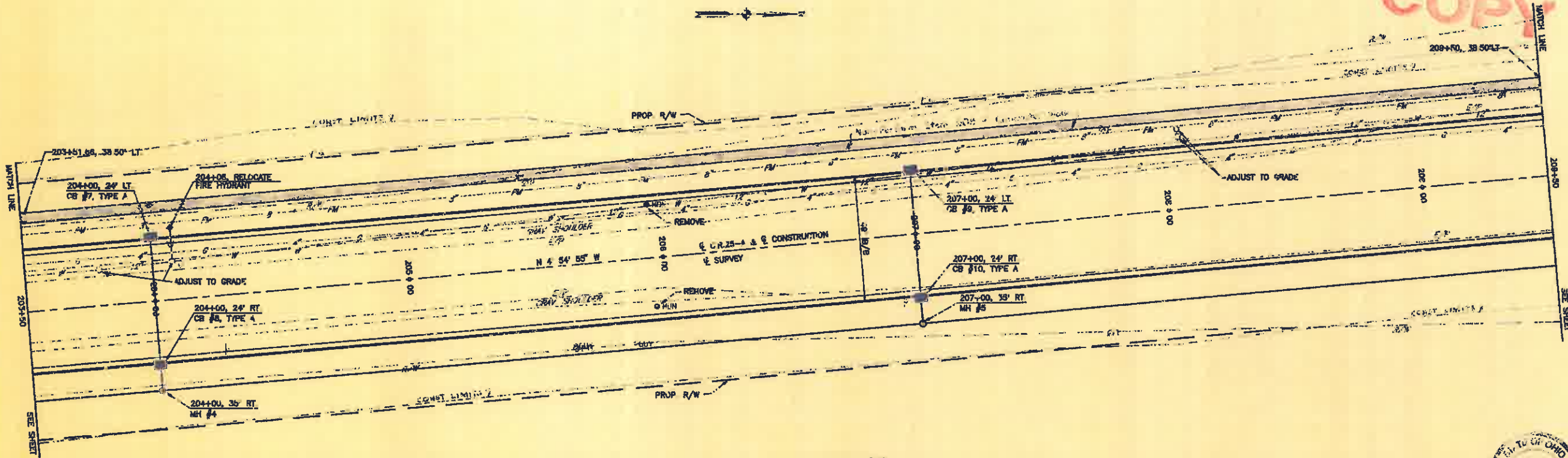
Scale
 HORIZ 1"=20'
 VERT 1"=5'
 21 of 60

Reviewed By: JAC Date: 8/92
 Checked By: JAC Date: 8/92
 Drawn By: JAC Date: 8/92
 Job Number: 03081
 Job Name: MEIJER OFFSITE WORK PROGRAM

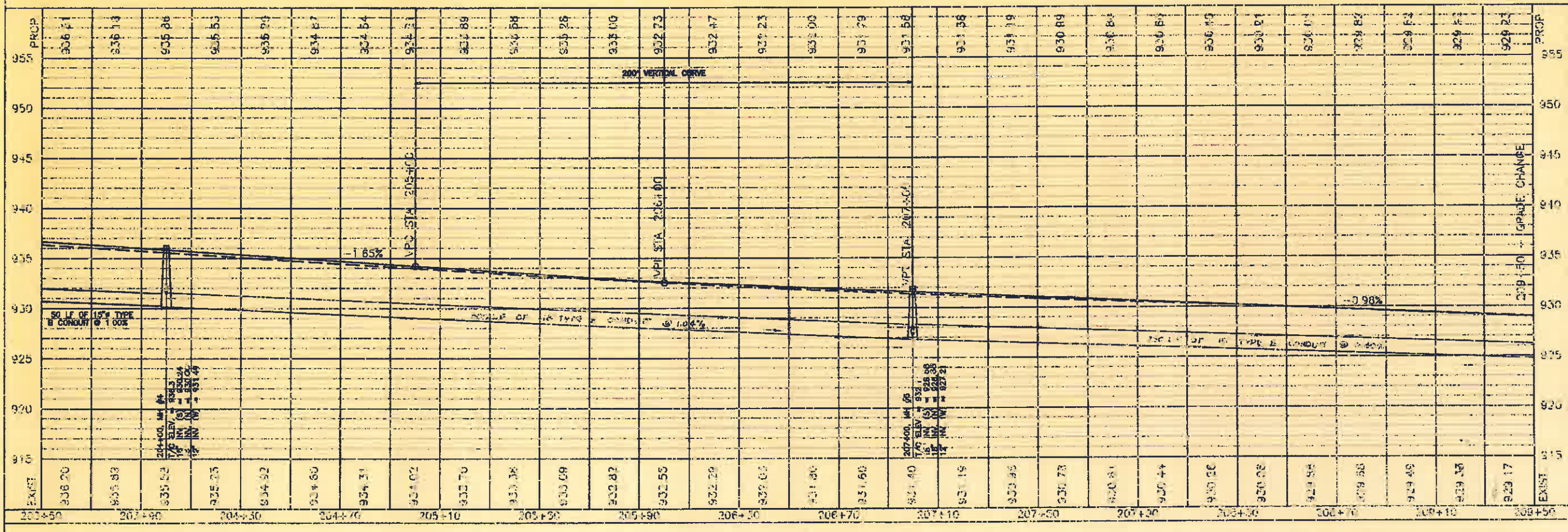
CITY OF TIPP CITY, OHIO

LOT 2397
MEIJER PROPERTIES, INC.
BY 632/787

COPY



PT IN LOT 2350
ML RICHARDS & WE - L LESHER
BY 420/613 & 114 603/108



PLAN & PROFILE
STA 203+50 TO STA 209+50

MEIJER OFFSITE WORK PROGRAM
COUNTY ROAD 25-A RECONSTRUCTION



Scale
HORIZ: 1"=20'
VERT: 1"=5'
Sheet
22 of 60

Designed by: JAD/DMR 8/92
Drawn by: JAD/DMR 8/92
Checked by: JAD/DMR 8/92
Approved by: OMR/Date 8/92
Job Number: 2061PF+
City Reference: 2061PF+

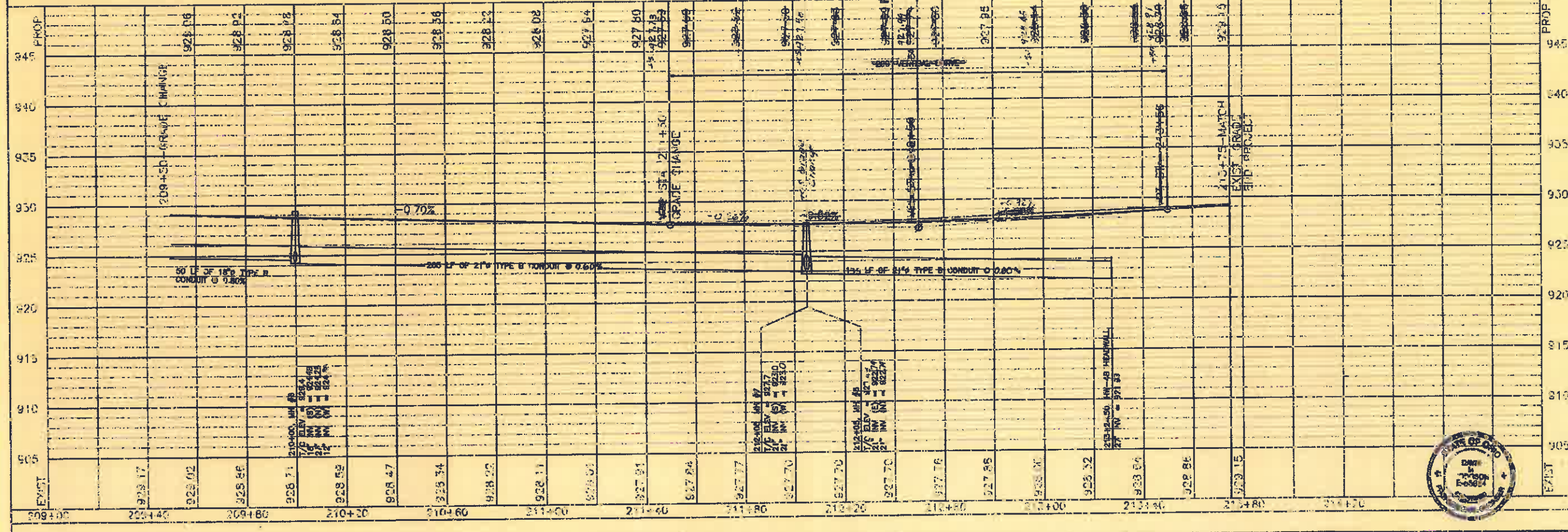
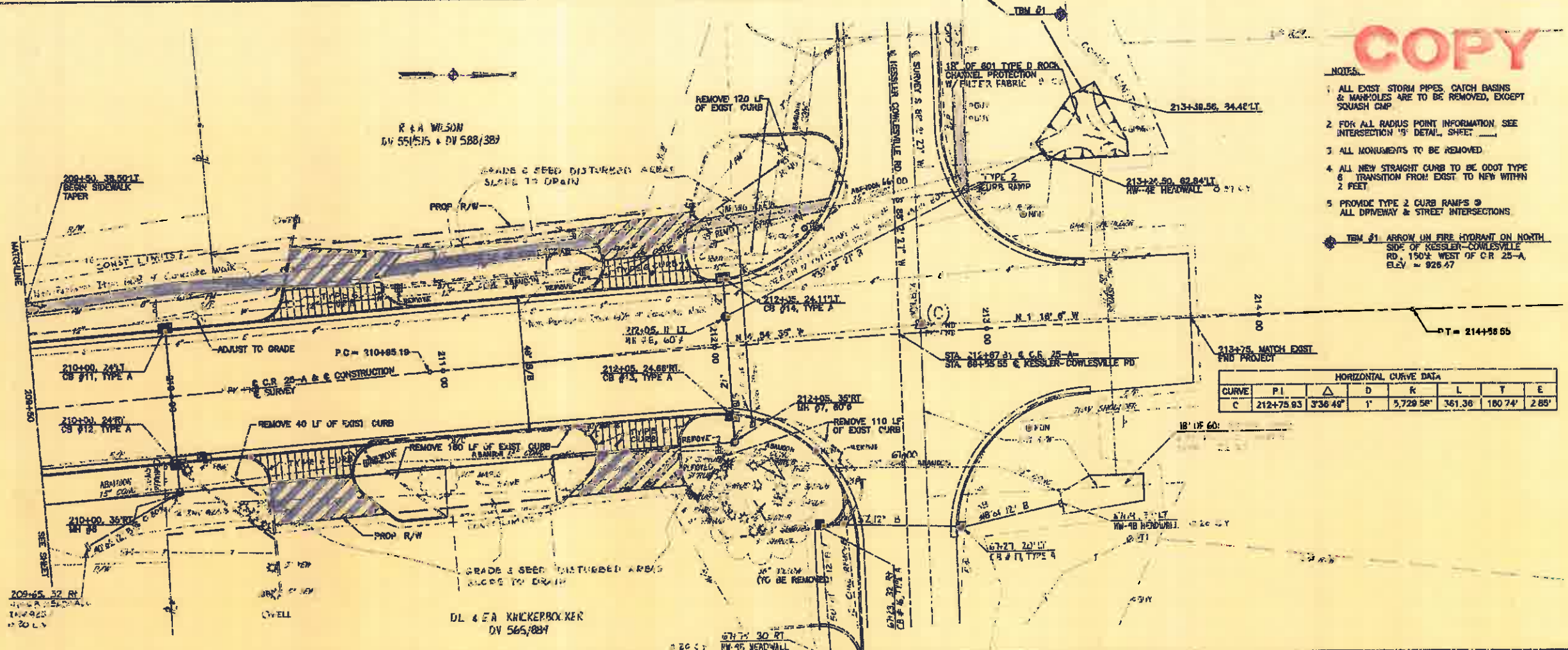
CITY OF TIPP CITY, OHIO

Revisions

COPY

- NOTES:**
- 1 ALL EXIST STORM PIPES, CATCH BASINS & MANHOLES ARE TO BE REMOVED, EXCEPT SQUASH CMP
 - 2 FOR ALL RADIUS POINT INFORMATION, SEE INTERSECTION 'B' DETAIL SHEET
 - 3 ALL MONUMENTS TO BE REMOVED
 - 4 ALL NEW STRAIGHT CURB TO BE 0007 TYPE
 - 5 TRANSITION FROM EXIST. TO NEW WITHIN 2 FEET
 - 6 PROVIDE TYPE 2 CURB RAMPS @ ALL DRIVEWAY & STREET INTERSECTIONS
- ITEM #1** ARROW ON FIRE HYDRANT ON NORTH SIDE OF KESSLER-COWLESVILLE RD., 150' WEST OF CR 25-A, ELEV. = 925.47

HORIZONTAL CURVE DATA						
CURVE	PI	Δ	D	R	L	T
C	212+75.93	336.49°	1'	5,729.58'	361.36'	2.85'



PLAN & PROFILE
STA 209+50 TO STA 213+75
 MEMBER OFFSITE WORK PROGRAM
 COUNTY ROAD 25-A RECONSTRUCTION



Scale
HORIZ 1"=20'
VERT 1"=5'
 Sheet
23 of 60

Designed by JAD Date 8/92
 Checked by JAD Date 8/92
 Drawn by MOJ Date 8/92
 Approved by DMH Date 8/92
 I.E. Number 33064
 Cod Reference 2068199

CITY OF TIPP CITY, OHIO



COPY

GENERAL NOTES

POWER SERVICES AS PER PLAN

ELECTRIC POWER SHALL BE OBTAINED FROM THE CITY OF TIPP CITY. IT SHALL BE THE CONTRACTOR'S RESPONSIBILITY TO ARRANGE FOR A SERVICE DROP TO THE TOP OF THE SIGNAL POLE AS NOTED ON THE PLAN.

PAYMENT FOR THIS ITEM OF WORK SHALL BE INCIDENTAL TO PAY ITEM 530 POWER CABLE, 2 CONDUCTOR, NO. 5 AWG AND SHALL INCLUDE PROVIDING A SERVICE WITH ONE INDICATOR AT THE TOP OF THE POLE NOTED ON THE PLAN.

ITEM 633 CONTROLLER AS PER PLAN

THIS ITEM OF WORK SHALL BE AS PER S3003 AND 8315 US EXCEPT AS HEREIN NOTED.

THE CONTROLLER SHALL BE A MINIVOX MODEL 1600 BE AS MANUFACTURED BY THE TRAFFIC CORPORATION OR A GENERAL MODEL EPAC 200 AS MANUFACTURED BY THE AUTOMATIC SIGNAL/ROAD SIGNAL CONTROLS CO.

THE BACK PANEL SHALL BE A 12-POSITION PANEL AND SHALL BE EQUIPPED WITH THE NECESSARY ACCESSORIES TO PROVIDE THE PHASING AS SHOWN ON THE SIGNAL PLAN SHEET.

THE CONTROLLERS SHALL BE PROVIDED WITH TIME SWAP COORDINATION CAPABILITIES.

THE CONTROLLER AS PROVIDED SHALL HAVE THE CAPABILITIES TO MONITOR AND STORE DATA INCLUDING BUT NOT LIMITED TO TRAFFIC VOLUMES FOR EXISTING LOOP DETECTOR, SPEED DATA AND GREEN OCCUPATION.

ALL PROGRAMMING DATA SHALL BE CAPABLE OF BEING ENTERED BY THE NEVENSANG OR BY A LAPTOP COMPUTER. A COPY OF THE SOFTWARE REQUIRED TO INTERFACE WITH THE CONTROLLER SHALL BE PROVIDED TO THE CITY OF TIPP CITY AS PART OF THIS ITEM OF WORK.

ITEM 632 LOOP DETECTOR UNIT AS PER PLAN

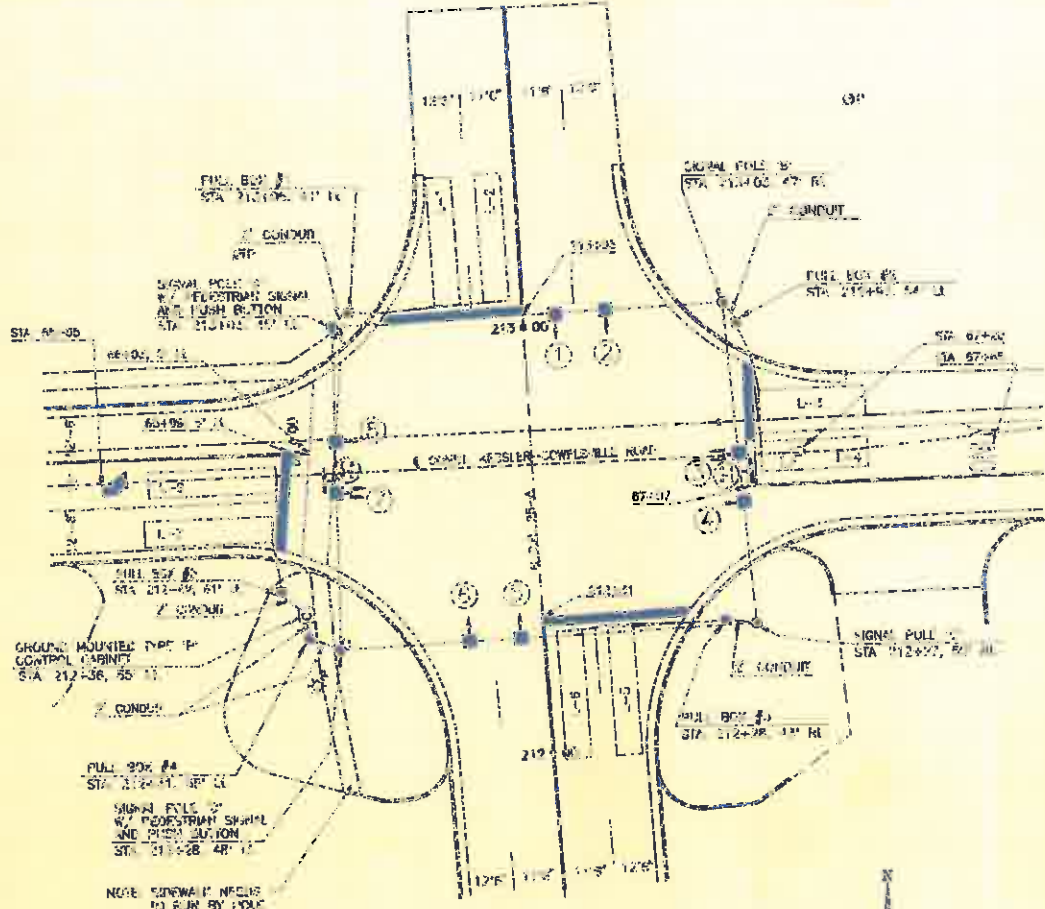
ALL LOOP DETECTOR UNITS PROVIDED SHALL BE DETECTOR SYSTEM MODEL 910, SINGLE CHANNEL UNIT. THESE UNITS SHALL HAVE EXTERNAL DELAY FEATURES.

TRAFFIC SIGNAL GENERAL SUMMARY

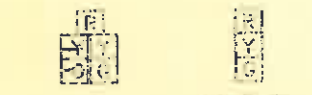
QUANTITY	UNIT	ITEM	DESCRIPTION
2	EA	631	VEHICULAR SIGNAL HEAD, 3-SECTION 12" DIA, 100' HGT
2	EA	632	VEHICULAR SIGNAL HEAD, 2-SECTION 12" DIA, 100' HGT
1	EA	633	PEDESTRIAN SIGNAL HEAD, 12" DIA, 100' HGT
1	EA	634	PEDESTRIAN PUSHBUTTON
6	EA	635	LOOP DETECTOR UNIT, AS PER PLAN
900	LF	636	LOOP DETECTOR PAVEMENT CORDON
96	LF	637	CONDUIT FOR ANCHOR BOLT FOUNDATIONS
-	EA	638	STRAIN POLE, TYPE T-10110, DESIGN S, 30' HGT
4	EA	639	WIRE STIFFENERS ASSEMBLY
963	LF	640	MOMENTED WIRE, 2 STRAND 5/8" DIA, WITH INTERLOCKS
187	LF	641	SIGNAL CABLE, 7 CONDUCTOR, NO. 14 AWG
54	LF	642	SIGNAL CABLE, 2 CONDUCTOR, NO. 14 AWG
1884	LF	643	LOOP DETECTOR WIRE, TYPE T-1
1050	LF	644	LOOP DETECTOR WIRE, TYPE T-2
90	LF	645	POWER CABLE, 2 CONDUCTOR, NO. 6 AWG
6	EA	646	CONNECTION OF VEHICULAR SIGNAL HOV
1	EA	647	CONTROLLER, AS PER PLAN
079	EA	648	CONCRETE TOP CABINET FOUNDATION
1	EA	649	PULL BOX, 713-031, 18" DIA.
1	EA	650	PULL BOX, 713-031, 18" DIA.
5	EA	651	ANCHOR BOLT
43	LF	652	TRUCK
23	LF	653	CONDUIT, 713-04, 2"
16	LF	654	CONDUIT, 711-04, 2"
15	EA	655	WIRE PLAT SHEET, TYPE T-1
2	EA	656	WIRE NUMBER ASSEMBLY, SPAN WIRE

NOTES

- 1. STRAIN POLES: FOUNDATIONS SHALL BE SET SQUARE TO THE CENTER LINE OF COUNTY ROAD 25 A.
- 2. HAND HOLES ON ALL POLES SHALL BE ON THE NORTH SIDE OF THE POLES.
- 3. ORIENTATION OF CABLE ENTRANCES AT TOP OF EACH POLE SHALL BE LOCATED FROM THE HAND HOLE: POLE A - 45° CLOCKWISE, POLE B - 325° CLOCKWISE, POLE C - 315° CLOCKWISE, POLE D - 45° CLOCKWISE.
- 4. POLE D SIGNAL CABLE ENTRANCE SHALL BE AT 7' FROM HAND HOLE POSITION.
- 5. ORIENTATION OF BUNDLED COUPLINGS OF PEDESTRIAN SIGNALS SHALL BE LOCATED FROM THE HAND HOLE: POLE A - 90° CLOCKWISE, POLE D - 270° CLOCKWISE.
- 6. FINAL LOCATION OF LOOP DETECTOR, PULL BOXES AND SIGNAL POLES SHALL BE APPROVED BY THE ENGINEER BEFORE INSTALLATION.
- 7. CONDUIT ELL IN FACE OF FOUNDATION SHALL BE 2" DIAMETER.
- 8. CONTROLLER CABINET DOOR SHALL FACE THE EAST.



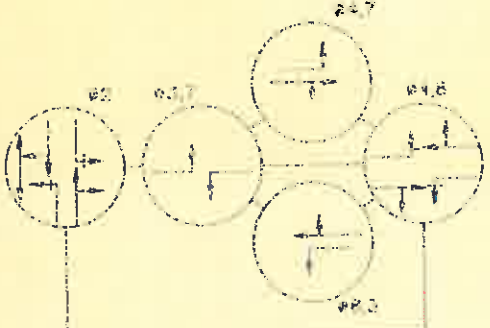
INTERSECTION AT 25-A AND KESSLER-COWELLSVILLE



SIGNAL INDICATIONS
(ALL SIGNALS ARE 12" DIA)



OVERHEAD SIGNS



SIGNAL PHASING

SIGNAL DISPLAY SCHEDULE

PHASE	INTERVAL	VEH. SIGNALS	PEDEST. SIGNALS	PRE. SIGNALS
PH. 1	60"	R, R, G, G, Y, Y, R	W, W, W	
PH. 2	60"	R, R, G, G, Y, Y, R	W, W, W	
PH. 3	60"	R, R, G, G, Y, Y, R	W, W, W	
PH. 4	60"	R, R, G, G, Y, Y, R	W, W, W	
PH. 5	60"	R, R, G, G, Y, Y, R	W, W, W	
PH. 6	60"	R, R, G, G, Y, Y, R	W, W, W	
PH. 7	60"	R, R, G, G, Y, Y, R	W, W, W	
PH. 8	60"	R, R, G, G, Y, Y, R	W, W, W	
PH. 9	60"	R, R, G, G, Y, Y, R	W, W, W	
PH. 10	60"	R, R, G, G, Y, Y, R	W, W, W	
PH. 11	60"	R, R, G, G, Y, Y, R	W, W, W	
PH. 12	60"	R, R, G, G, Y, Y, R	W, W, W	
PH. 13	60"	R, R, G, G, Y, Y, R	W, W, W	
PH. 14	60"	R, R, G, G, Y, Y, R	W, W, W	
PH. 15	60"	R, R, G, G, Y, Y, R	W, W, W	
PH. 16	60"	R, R, G, G, Y, Y, R	W, W, W	
PH. 17	60"	R, R, G, G, Y, Y, R	W, W, W	
PH. 18	60"	R, R, G, G, Y, Y, R	W, W, W	
PH. 19	60"	R, R, G, G, Y, Y, R	W, W, W	
PH. 20	60"	R, R, G, G, Y, Y, R	W, W, W	
PH. 21	60"	R, R, G, G, Y, Y, R	W, W, W	
PH. 22	60"	R, R, G, G, Y, Y, R	W, W, W	
PH. 23	60"	R, R, G, G, Y, Y, R	W, W, W	
PH. 24	60"	R, R, G, G, Y, Y, R	W, W, W	
PH. 25	60"	R, R, G, G, Y, Y, R	W, W, W	
PH. 26	60"	R, R, G, G, Y, Y, R	W, W, W	
PH. 27	60"	R, R, G, G, Y, Y, R	W, W, W	
PH. 28	60"	R, R, G, G, Y, Y, R	W, W, W	
PH. 29	60"	R, R, G, G, Y, Y, R	W, W, W	
PH. 30	60"	R, R, G, G, Y, Y, R	W, W, W	

SIGNAL TIMING CHART

PHASE	1	2	3	4	5	6	7	8	9	10	11	12	13	14	15	16	17	18	19	20	21	22	23	24	25	26	27	28	29	30
PHASE	1	2	3	4	5	6	7	8	9	10	11	12	13	14	15	16	17	18	19	20	21	22	23	24	25	26	27	28	29	30
VEH. GREEN	0	0	0	0	0	0	0	0	0	0	0	0	0	0	0	0	0	0	0	0	0	0	0	0	0	0	0	0	0	0
VEH. YELLOW	0	0	0	0	0	0	0	0	0	0	0	0	0	0	0	0	0	0	0	0	0	0	0	0	0	0	0	0	0	0
VEH. RED	0	0	0	0	0	0	0	0	0	0	0	0	0	0	0	0	0	0	0	0	0	0	0	0	0	0	0	0	0	0
PEDEST. GREEN	0	0	0	0	0	0	0	0	0	0	0	0	0	0	0	0	0	0	0	0	0	0	0	0	0	0	0	0	0	0
PEDEST. YELLOW	0	0	0	0	0	0	0	0	0	0	0	0	0	0	0	0	0	0	0	0	0	0	0	0	0	0	0	0	0	0
PEDEST. RED	0	0	0	0	0	0	0	0	0	0	0	0	0	0	0	0	0	0	0	0	0	0	0	0	0	0	0	0	0	0
PRE. GREEN	0	0	0	0	0	0	0	0	0	0	0	0	0	0	0	0	0	0	0	0	0	0	0	0	0	0	0	0	0	0
PRE. YELLOW	0	0	0	0	0	0	0	0	0	0	0	0	0	0	0	0	0	0	0	0	0	0	0	0	0	0	0	0	0	0
PRE. RED	0	0	0	0	0	0	0	0	0	0	0	0	0	0	0	0	0	0	0	0	0	0	0	0	0	0	0	0	0	0

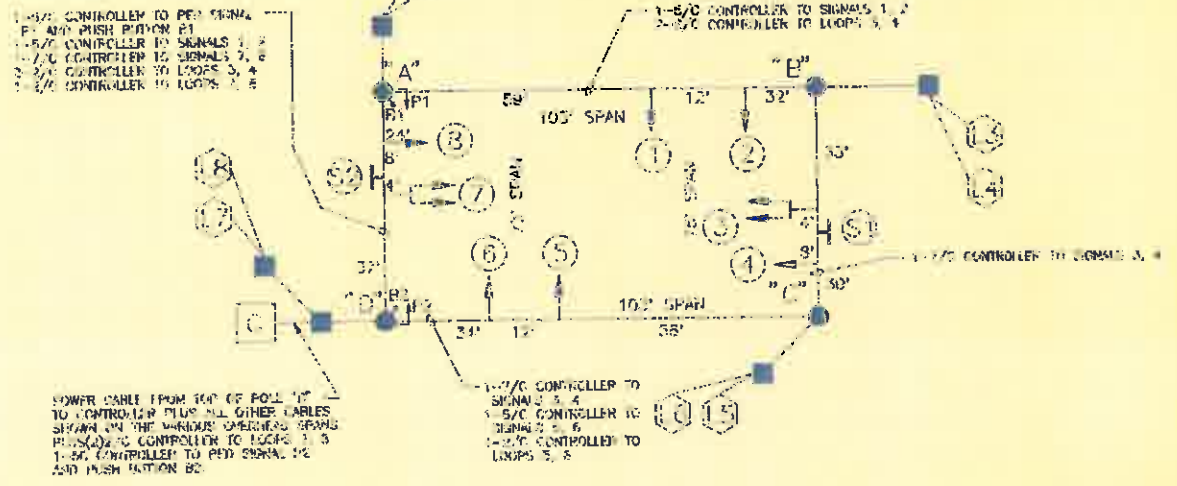
PULL BOX SIZES

#1	12" DIA
#2	10" DIA
#3	10" DIA
#4	10" DIA
#5	10" DIA

LOOP DETECTORS

LOOP	SIZE	MODE
L-1	8'x30'	PRESENCE
L-2	8'x30'	
L-3	7'x25'	
L-4	6'x30'	
L-5	6'x30'	
L-6	6'x30'	
L-7	6'x30'	
L-8	6'x30'	PRESENCE

- NOTE:
 - 1. LOOPS L-1 AND L-2 SHALL BE CONNECTED IN SERIES.
 - 2. LOOPS L-3 AND L-4 SHALL BE CONNECTED IN SERIES.
 - 3. LOOPS L-5 TO L-8 SHALL BE CONNECTED IN SERIES UNLESS OTHERWISE DESIGNATED.
 - 4. ALL LOOPS SHALL BE INSTALLED TO THE BEST PRACTICE STANDARD.



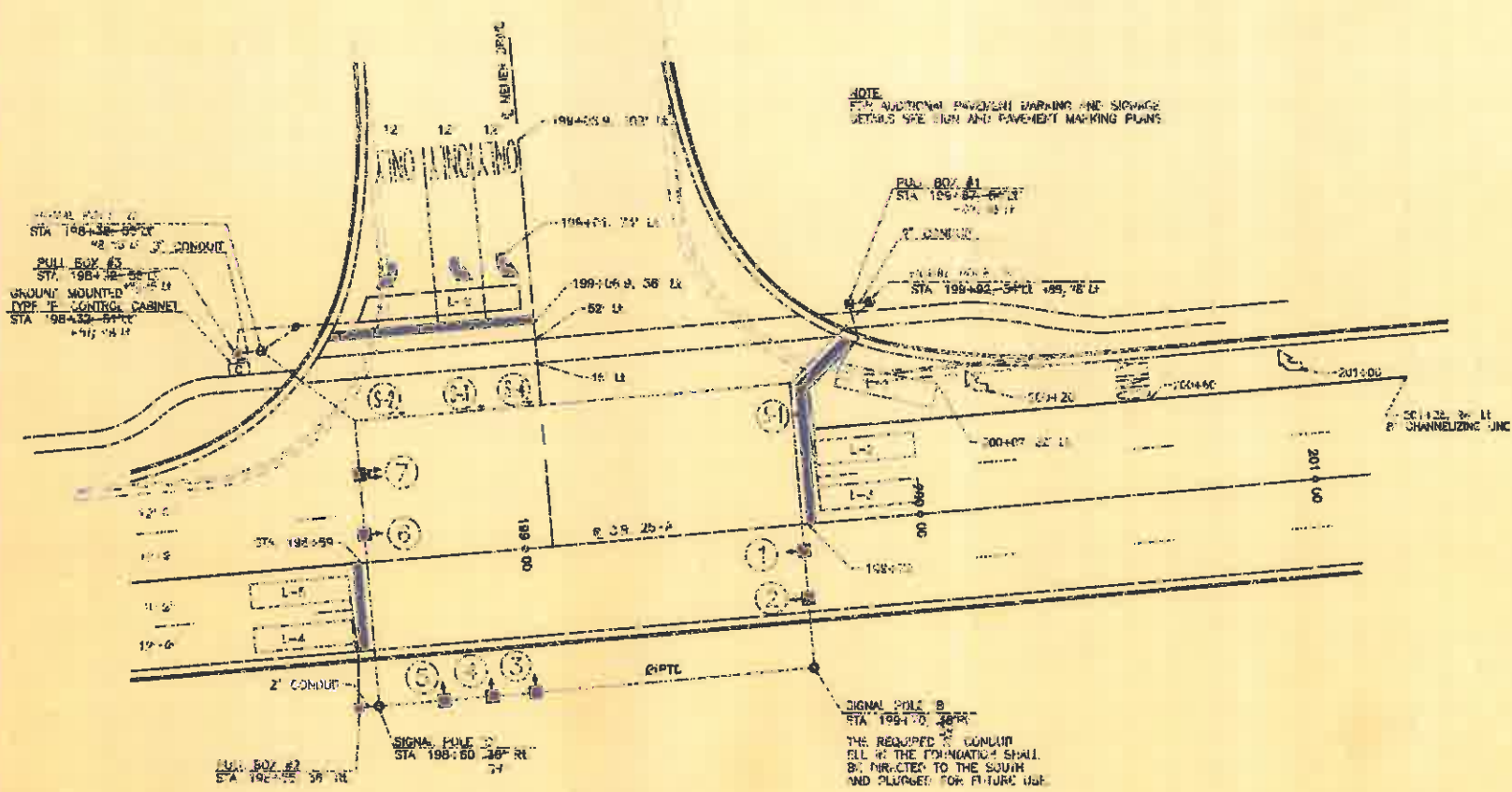
SPAN WIRE AND SIGNAL CABLE DETAIL

CITY OF TIPP CITY
KESSLER-COWELLSVILLE
TRAFFIC SIGNAL PLAN

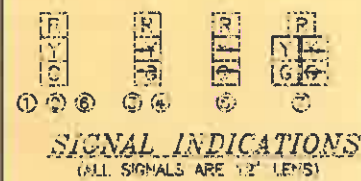
FURL & Associates, Inc.
 Consulting Engineers & Surveyors
 1917 Franklin Street, Tipp City, Ohio 45066
 (614) 298-7700 FAX (614) 298-7705

DRAWN BY: []
 CHECKED BY: []
 DATE: []
 SCALE: []
 SHEET NO.: [] OF []

COPY



COUNTY ROAD 25-A AND MEIJER DRIVE TRAFFIC SIGNAL PLAN



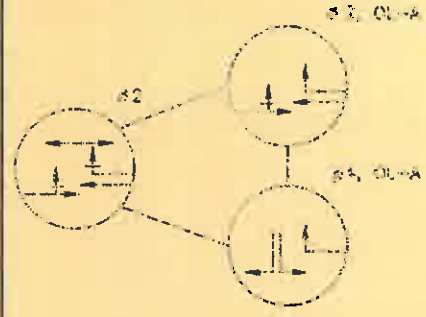
SIGNAL DISPLAY SCHEDULE		VEH SIGNALS		PED SIGNALS							
PHASE	INTERVAL	1	2	3	4	5	6	7	8	9	10
VEH CLEAR	30	Y	R	R	R	Y	R	R	R	Y	R
ALL PED	30	Y	R	R	R	Y	R	R	R	Y	R
#2 VEH GREEN/WALK	30	Y	R	R	R	Y	R	R	R	Y	R
VEH CLEAR	30	Y	R	R	R	Y	R	R	R	Y	R
ALL RED	30	Y	R	R	R	Y	R	R	R	Y	R
VEH CLEAR	30	Y	R	R	R	Y	R	R	R	Y	R
ALL RED	30	Y	R	R	R	Y	R	R	R	Y	R
FLASH	30	Y	R	R	R	Y	R	R	R	Y	R

PULL BOX SIZES	
#1	10" DIA
#2	15" DIA
#3	18" x 25"

LOOP DETECTORS		
LOOP	SIZE	MODE
L-1	6'x25'	PRESENCE
L-2	6'x25'	
L-3	6'x25'	
L-4	6'x25'	
L-5	6'x25'	
L-6	6'x46'	PRESENCE

- NOTE:
- LOOPS L-1 AND L-3 SHALL BE CONNECTED IN SERIES.
 - LOOPS L-4 AND L-5 SHALL BE CONNECTED IN SERIES.
 - LOOPS ARE TO BE LOCATED 12' BEHIND STOP LINES UNLESS OTHERWISE STATIONED.
 - ALL LOOPS SHALL BE INSTALLED IN THE FINISHED ROADWAY SURFACE.

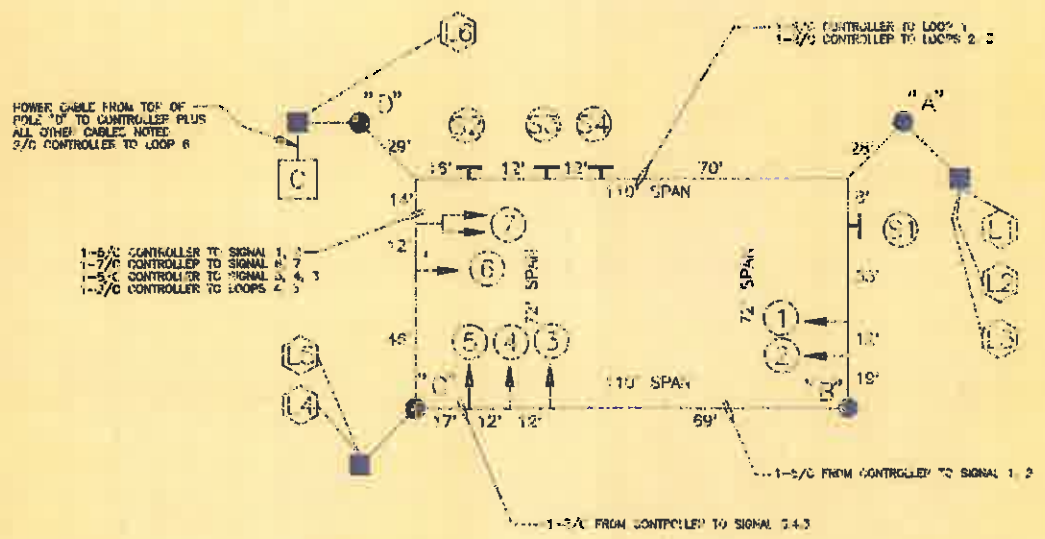
SIGNAL TIMING CHART	
PHASE	TIME
MIN GREEN	30
MAX GREEN	60
MIN YELLOW	3
MAX YELLOW	3
MIN ALL RED	30
MAX ALL RED	30
MIN ALL RED	30
MAX ALL RED	30
MIN ALL RED	30
MAX ALL RED	30



TRAFFIC SIGNAL GENERAL SUMMARY		
QUANTITY	UNIT	DESCRIPTION
4	EA	VEHICULAR SIGNAL HEAD 1-SECTION, 12" LENS ONE WAY
1	EA	VEHICULAR SIGNAL HEAD 1-SECTION, 12" LENS ONE WAY
4	EA	LOOP DETECTOR UNIT AS PER PLAN
512	LF	LOOP DETECTOR PAVEMENT CUTTING
98	CY	CONCRETE FOR INCHON BASE FOUNDATIONS
4	EA	STRAN POLE TYPE 10-R-10, DESIGN 0, 30 FEET
4	EA	CABLE SUPPORT ASSEMBLY
271	LF	WELSPONDER WIPE, 7 STRAND 3/8" DIA WITH ACCESSORIES
120	LF	SIGNAL CABLE 7 CONDUCTOR NO. 14 AWG
966	LF	SIGNAL CABLE 5 CONDUCTOR NO. 14 AWG
1234	LF	LOOP DETECTOR WIRE TYPE 10
762	LF	LOOP DETECTOR LEAD-BY CABLE
10	LF	POWER CABLE 2-CONDUCTOR NO. 8 AWG
7	EA	COVERING OF VEHICULAR SIGNAL HEAD
1	EA	CONTROLLER AS PER PLAN
0.39	CY	CONCRETE FOR CABINET FOUNDATION
2	EA	PULL BOX 713-181 10" DIA
1	EA	PULL BOX 713-181 18" x 25"
2	EA	GROUND ROD
20	LF	TRENCH
10	LF	CHANNEL 713-04 12"
16	LF	CHANNEL 713-04 3"
30	SF	SIGNAL FLAG SHEET TYPE 10
4	EA	SPIN HANGER ASSEMBLY SPAN WIRE

NOTES

- STRAN POLES FOUNDATIONS SHALL BE SET SQUARE TO THE CENTER LINE OF COUNTY ROAD 25-A.
- HAND HOLES ON ALL POLES SHALL BE ON THE NORTH SIDE OF THE POLES.
- ORIENTATION OF CABLE ENTRANCES AT TOP OF EACH POLE SHALL BE LOCATED FROM THE HAND HOLE:
 - POLE A: 135° CLOCKWISE
 - POLE B: 225° CLOCKWISE
 - POLE C: 315° CLOCKWISE
 - POLE D: 45° CLOCKWISE
- POLE D SIGNAL CABLE ENTRANCE SHALL BE A 1/2" BLIND HALF COUPLING.
- ORIENTATION OF BLIND HALF COUPLINGS OF PEDESTRIAN SIGNALS SHALL BE LOCATED FROM THE HAND HOLE:
 - POLE A: 90° CLOCKWISE
 - POLE B: 90° CLOCKWISE
 - POLE D: 90° CLOCKWISE
- FINAL LOCATION OF LOOP DETECTORS, PULL BOXES AND SIGNAL STRAN POLES SHALL BE APPROVED BY THE ENGINEER BEFORE INSTALLATION.
- CONTROLLER CABINET DOOR SHALL FACE THE EAST.



SPAN WIRE AND SIGNAL CABLE DETAIL

PROJECT NAME:
9266/TSE/DWG

CITY OF TIPP CITY
KESSLER COWLESVILLE ROAD
TRAFFIC SIGNAL PLAN

WORLD & Associates, Inc.
Consulting Engineers & Surveyors
1000 W. Main St., Tipp City, OH 45470
TEL: 937-838-5325

DATE: 11/26/02
DRAWN BY: J.S.T.
CHECKED BY: J.S.T.
60 60