

# KINNA DRIVE DEDICATION/VACATION/REPLAT NORTHGATE COMMERCE CENTER

PT. 2625  
PT. 2627  
PT. 3861  
INLOT  
TIPP CITY  
CITY  
MIAMI, OHIO  
COUNTY

## LEGEND

- 5/8" X 30" REBAR  
W/CAP SET
- IRON PIN FOUND

PLAT BOOK 21, PAGE 52  
MIAMI COUNTY RECORDER'S RECORD  
OF PLATS  
RECEIVED FOR RECORD THIS 22 DAY  
OF November, 2005, AT 9:13 A.M.

FILE No. 0437425 FEE: \$43.70

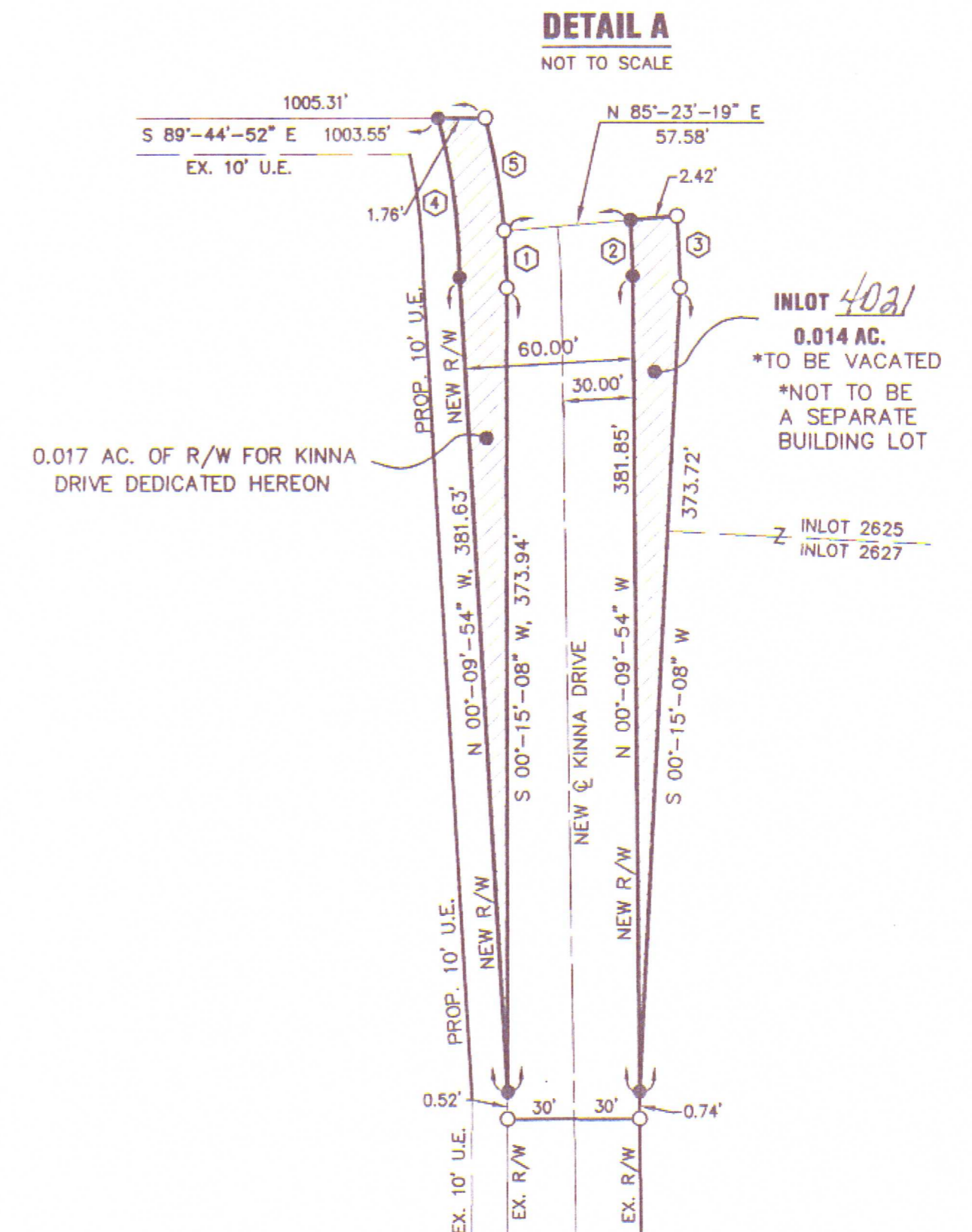
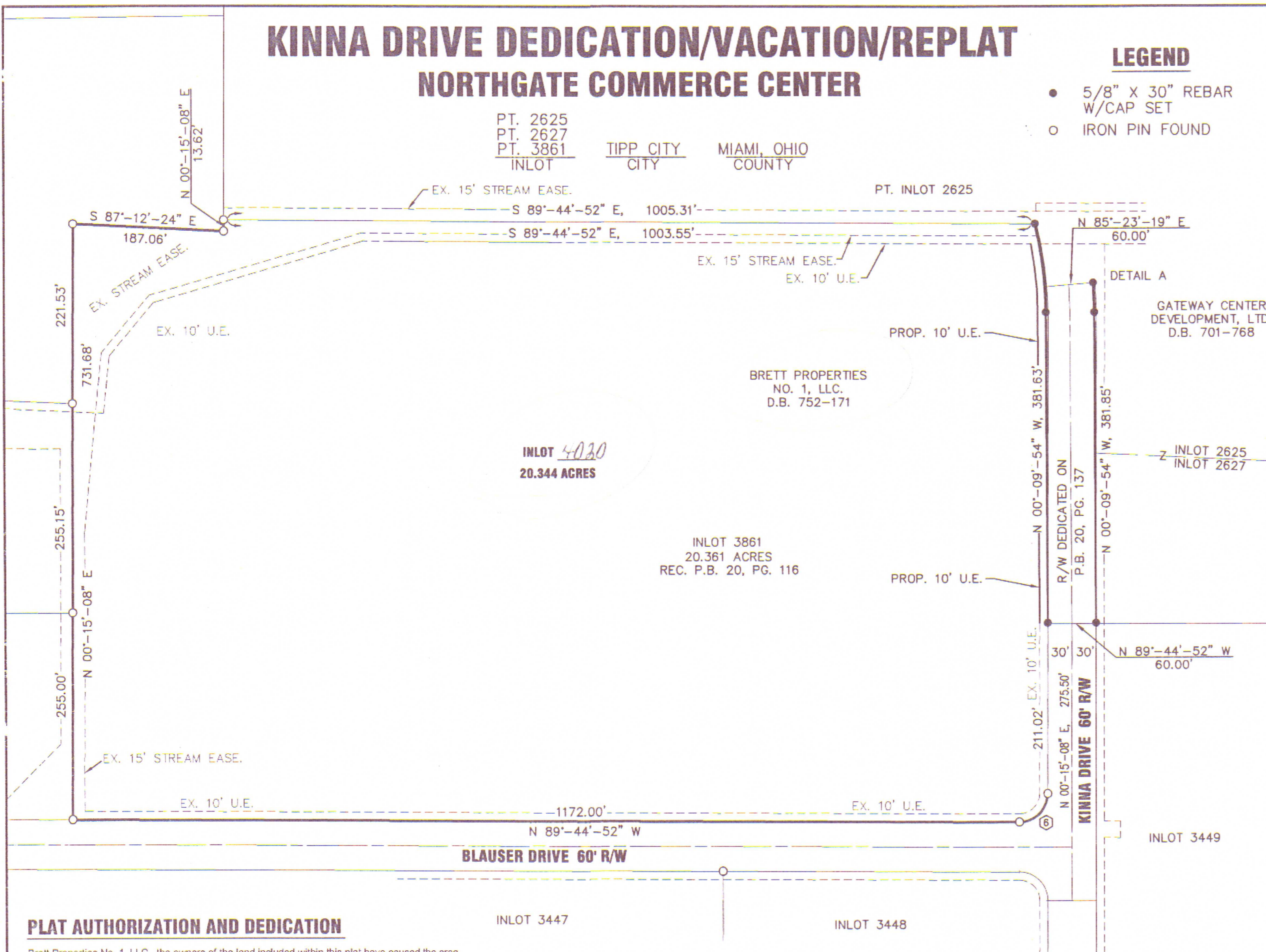
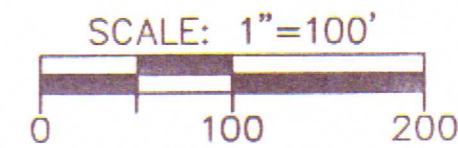
John W. O'Brien  
JOHN W. O'BRIEN  
MIAMI COUNTY RECORDER  
Christine Johnson  
BY DEPUTY

THIS PLAT APPROVED AND TRANSFERRED  
THIS 22 DAY OF November, 2005.

Chris A. Peeples  
CHRIS A. PEEPLES  
MIAMI COUNTY AUDITOR

Synda Pearson  
BY DEPUTY AUDITOR

BEARINGS BASED ON  
REC. P.B. 18, PG. 144



### PLAT AUTHORIZATION AND DEDICATION

Brett Properties No. 1, LLC., the owners of the land included within this plat have caused the area located in the City of Tipp City, Ohio, encompassed by this plat, to be surveyed, platted, and known as Kinna Drive Dedication/Vacation Plat. Furthermore, Brett Properties No. 1, LLC. dedicate the streets and easements as shown on this plat to the public use forever.

Brett T. Leaf  
Brett Properties No. 1, LLC.

State of Ohio, SS

The foregoing instrument was acknowledged before me this 11 day of November, 2005 by Brett Properties No. 1, LLC.

Wesley D. Goubeaux  
Notary Public In and For The State of Ohio

10-19-09  
My commission expires



### CITY OF TIPP CITY COUNCIL

THIS PLAT WAS REVIEWED AND ACCEPTED BY US  
THIS 19 DAY OF September, 2005.  
BY ORDINANCE 29-05

Urban K. Blay  
PRESIDENT OF COUNCIL  
Misty Cheshire  
CLERK OF COUNCIL

### CITY OF TIPP CITY PLANNING BOARD

THIS PLAT WAS REVIEWED AND APPROVED BY US  
THIS 22 DAY OF August, 2005.

Wesley D. Goubeaux  
CHAIRPERSON  
Marilyn A. Jernell  
SECRETARY

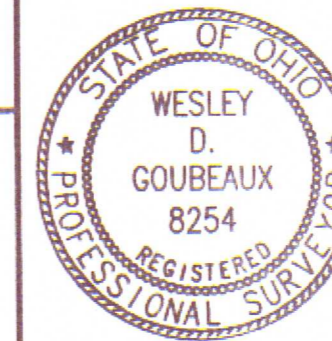
CURVE TABLE					
CURVE NUMBER	RADIUS	Δ	ARC LENGTH	CHORD LENGTH	CHORD BEARING
1	470.00'	04°-51'-50"	39.90'	39.88'	S 02°-10'-45" E
2	527.50'	03°-58'-51"	36.65'	36.64'	N 02°-09'-20" W
3	530.00'	04°-51'-50"	45.00'	44.99'	S 02°-10'-45" E
4	467.50'	13°-32'-27"	110.49'	110.23'	N 06°-56'-08" W
5	470.00'	09°-33'-24"	78.39'	78.30'	S 09°-23'-23" E
6	35.00'	90°-00'-00"	54.98'	49.50'	N 45°-15'-08" E

BEING THE DEDICATION OF RIGHT OF WAY FOR KINNA DRIVE OUT OF PART OF INLOT 3861 AS ACQUIRED BY BRETT PROPERTIES NO. 1, LLC. BY DEED BOOK 752, PAGE 171, MIAMI COUNTY RECORDER'S RECORDS AND THE VACATION OF A PORTION OF KINNA DRIVE AS DEDICATED ON MIAMI COUNTY RECORDER'S PLAT BOOK 20, PAGE 137.

I HEREBY CERTIFY THAT ALL MEASUREMENTS TO BE IN ACCORDANCE WITH SURVEYS AND DEEDS OF RECORD.

Wesley D. Goubeaux  
WESLEY D. GOUBEAUX, P.S. #8254

06-14-2005  
DATE



**CHOICE ONE ENGINEERING**  
The choice that exceeds...  
440 E. HOEWISHER ROAD  
SIDNEY, OHIO 45385  
(937) 497-0200 • FAX (937) 497-0300  
www.choiceoneengineering.com

date: 06-14-2005  
drawn by: WDG  
job number: MIATCIO514