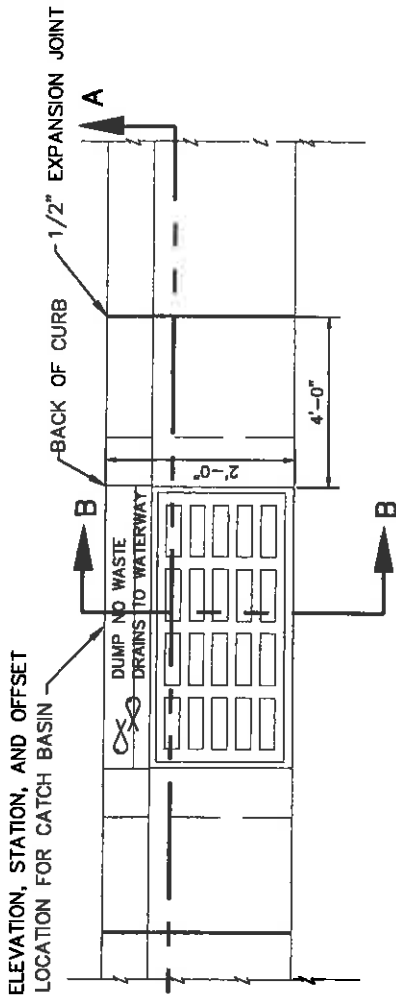
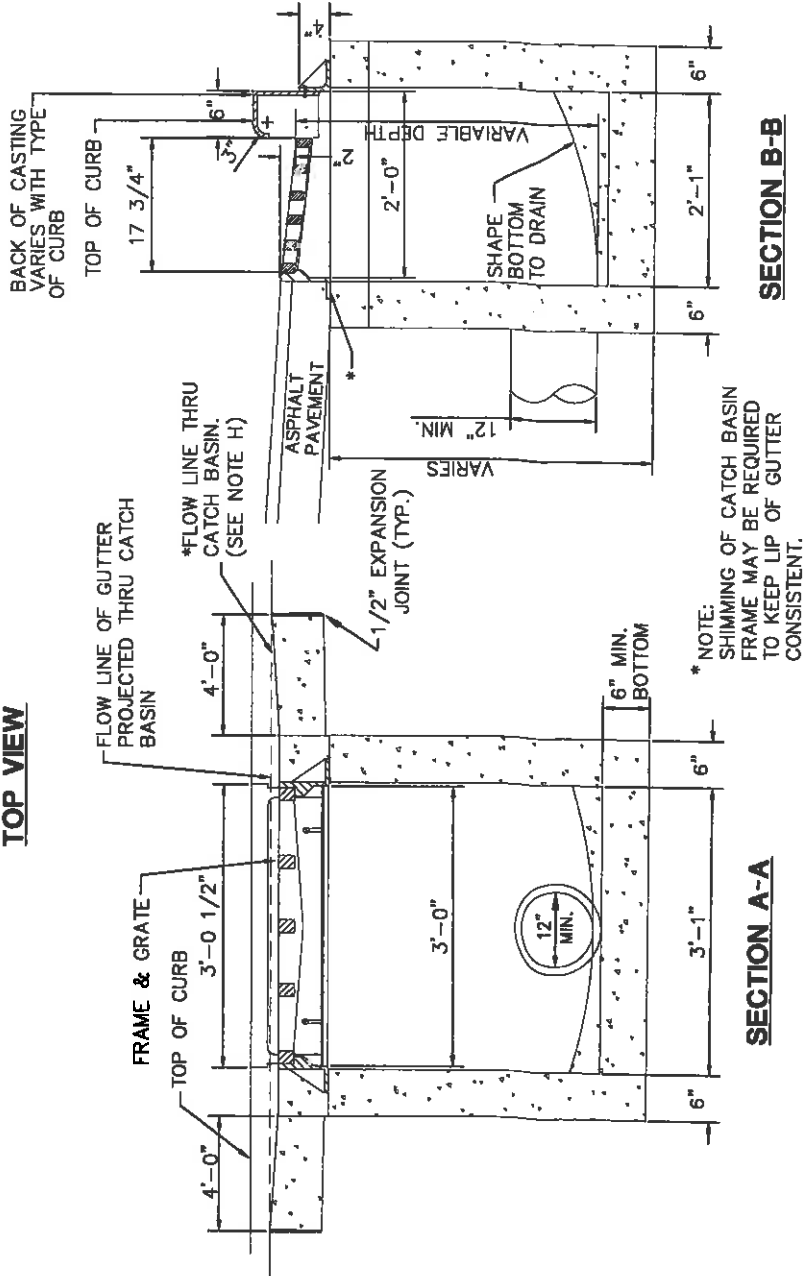


NOTES

- A. AS OF JANUARY 1, 2003 THE FOLLOWING TEXT SHALL BE CAST INTO THE TOP OF THE GRATE:
 "DUMP NO WASTE" AND "DRAINS TO WATERWAY"
 TEXT SHALL BE PRINTED IN BOLD, CAPITAL LETTERS WITH A MINIMUM HEIGHT OF 1/2 INCH. "WATERWAY" MAY BE SUBSTITUTED WITH "STREAM", "RIVER", ETC. ACTUAL PLACEMENT AND LOGO MAY VARY PER MANUFACTURER.
- B. CASTING SHALL BE EAST JORDAN 7030 OR NEENAH R-3246 OR EQUIVALENT.
- C. FOR TYPE 2 COMBINATION CURB AND GUTTER THE BACK SHALL BE EAST JORDAN TYPE T4 OR NEENAH (3 INCH RADIUS) (R-3246-1).
- D. FOR TYPE 1 COMBINATION ROLL CURB AND GUTTER THE BACK SHALL BE EAST JORDAN TYPE T2 OR NEENAH (MOUNTABLE CURB) (R-3246-E).
- E. CATCH BASIN IN DRIVE APPROACHES TO BE AVOIDED, IF POSSIBLE. THE BACKS SHALL BE EAST JORDAN TYPE T3 OR NEENAH (R-3246-1 WITH CURB PLATE).
- F. STANDARD GRATE SHALL BE EAST JORDAN TYPE M2, NEENAH TYPE C, OR EQUIVALENT. ALL BAR EDGES TO BE ROUNDED 1/8 INCH RADIUS.
- G. CONCRETE, CAST-IN-PLACE, TO BE CLASS C. PRECAST CONSTRUCTION PERMITTED AND CONCRETE SHALL MEET THE REQUIREMENTS OF 706.13 WITH 6±2% AIR VOID CONTENT IN THE HARDENED CONCRETE. KNOCKOUTS ARE REQUIRED IN PRECAST CONSTRUCTION. PRECAST WALLS SHALL HAVE A SUFFICIENT AMOUNT OF REINFORCEMENT TO PERMIT SHIPPING AND PLACEMENT WITHOUT DAMAGE.
- H. CARE SHALL BE TAKEN WHEN CONNECTING TO AN EXISTING CATCH BASIN TO KEEP OPENING AS MINIMAL AS POSSIBLE. IF POSSIBLE, SAW CUT OR USE ROTARY HAMMER FOR OPENING TO MINIMIZE DAMAGE TO CATCH BASIN. PIPE TO INTRUDE INTO CATCH BASIN 1 INCH ONLY AND PIPE MUST BE CUT PARALLEL TO CATCH BASIN. USE NONSHRINK GROUT AROUND PIPE TO SEAL BETWEEN PIPE AND CATCH BASIN.
- I. DROP FLOW LINE 1/2 INCH WITHIN BLOCK OUT OF COMBINED CURB AND GUTTER WHILE KEEPING LIP OF GUTTER CONSISTENT WITH TOP OF CURB.
- J. ALL GRATES SHALL BE CONSIDERED "BICYCLE SAFE".



TOP VIEW



SECTION B-B

SECTION A-A

* NOTE: SHIMMING OF CATCH BASIN FRAME MAY BE REQUIRED TO KEEP LIP OF GUTTER CONSISTENT.

CITY OF
TIPP CITY

ONE

TYPE 1 CATCH BASIN

REVISIONS:

DATE
APPROVED:
MAR. 2015
PAGE No.
600-1