

O:\City of Piqua\010902A.01 - Great Miami Pedestrian Bridge\08160\roadway\sheets\08160GG001.dgn 5/4/2022 3:18:11 PM jmeilman

SHEET NUM.										PART.	ITEM	ITEM	GRAND	UNIT	DESCRIPTION	SEE SHEET NO.
5	11	12	XS	33	34					01/S>2/BR	EXT	EXT	TOTAL			
															ROADWAY	
										LS	201	11000	LS		CLEARING AND GRUBBING	
										2,454	202	23000	2,454	SY	PAVEMENT REMOVED	
										81	202	32000	81	FT	CURB REMOVED	
										65	202	75000	65	FT	FENCE REMOVED	
										278	203	10000	278	CY	EXCAVATION	
										862	203	20000	862	CY	EMBANKMENT	
										1,911	204	10000	1,911	SY	SUBGRADE COMPACTION	
										243	204	13000	243	CY	EXCAVATION OF SUBGRADE	
										256	204	30010	256	CY	GRANULAR MATERIAL, TYPE B	
										1	204	45000	1	HOUR	PROOF ROLLING	
										1,060	204	50000	1,060	SY	GEOTEXTILE FABRIC	
										424	607	98000	424	FT	FENCE, MISC.:WOOD FENCE	5
															EROSION CONTROL	
										1	601	21050	1	SY	TIED CONCRETE BLOCK MAT WITH TYPE 1 UNDERLAYMENT	
										390	601	32104	390	CY	ROCK CHANNEL PROTECTION, TYPE B WITH GEOTEXTILE FABRIC	
										2	659	00100	2	EACH	SOIL ANALYSIS TEST	
										551	659	00300	551	CY	TOPSOIL	
										4,293	659	10001	4,293	SY	SEEDING AND MULCHING, AS PER PLAN	5
										216	659	14000	216	SY	REPAIR SEEDING AND MULCHING	
										0.61	659	20000	0.61	TON	COMMERCIAL FERTILIZER	
										0.91	659	31000	0.91	ACRE	LIME	
										24	659	35000	24	MGAL	WATER	
										939	670	00500	939	SY	SLOPE EROSION PROTECTION	
										LS	832	15000	LS		STORM WATER POLLUTION PREVENTION PLAN	
										LS	832	15002	LS		STORM WATER POLLUTION PREVENTION INSPECTIONS	
										LS	832	15010	LS		STORM WATER POLLUTION PREVENTION INSPECTION SOFTWARE	
										28,500	832	30000	28,500	EACH	EROSION CONTROL	
															DRAINAGE	
										1	602	20000	1	CY	CONCRETE MASONRY	
										2,047	605	12200	2,047	FT	6" DEEP PIPE UNDERDRAINS	
										143	611	00510	143	FT	6" CONDUIT, TYPE F FOR UNDERDRAIN OUTLETS	
										64	611	04600	64	FT	12" CONDUIT, TYPE C	
										51	611	04900	51	FT	12" CONDUIT, TYPE D	
										3	611	98480	3	EACH	CATCH BASIN, NO. 2-2B WITH BICYCLE SAFE GRATE	
										4	611	99710	4	EACH	PRECAST REINFORCED CONCRETE OUTLET	
															PAVEMENT	
										453	254	01000	453	SY	PAVEMENT PLANING, ASPHALT CONCRETE(1 1/4")	
										309	304	20000	309	CY	AGGREGATE BASE (6")	
										121	407	10000	121	GAL	TACK COAT	
										592	408	10000	592	GAL	PRIME COAT (@ 0.4 GAL/SY)	
										290	422	25001	290	GAL	EMULSION, CHIP SEAL, AS PER PLAN	5
										68	441	50000	68	CY	ASPHALT CONCRETE SURFACE COURSE, TYPE 1, (448), PG64-22(1 1/4")	
										72	441	50300	72	CY	ASPHALT CONCRETE INTERMEDIATE COURSE, TYPE 2, (448)(1 3/4")	
										11	609	26000	11	FT	CURB, TYPE 6	
															TRAFFIC CONTROL	
										12	630	02100	12	FT	GROUND MOUNTED SUPPORT, NO. 2 POST	
										1.5	630	80100	1.5	SF	SIGN, FLAT SHEET	
										209	642	00700	209	FT	TRANSVERSE/DIAGONAL LINE, TYPE 1	
										320	642	01200	320	FT	PARKING LOT STALL MARKING, TYPE 1	
										1	642	01702	1	EACH	HANDICAP SYMBOL MARKING, TYPE 1	
															STRUCTURE 20 FOOT SPAN AND UNDER (BOX CULVERT)	
															FOR ESTIMATED QUANTITIES SEE SHEET 37	
															STRUCTURE OVER 20 FOOT SPAN (PREFABRICATED TRUSS)	
															FOR ESTIMATED QUANTITIES SEE SHEET 49	
															INCIDENTALS	
										LS	614	11000	LS		MAINTAINING TRAFFIC	
										8	619	16010	8	MNTH	FIELD OFFICE, TYPE B	
										LS	623	10000	LS		CONSTRUCTION LAYOUT STAKES AND SURVEYING	
										LS	624	10000	LS		MOBILIZATION	
										LS	SPECIAL	69071000	LS		ASBESTOS ABATEMENT (EXISTING STRUCTURE OVER HEMM DITCH)	6

REVISED 05/04/22

GENERAL SUMMARY

MIA-GREAT MIAMI RIVER TRAIL BRIDGE

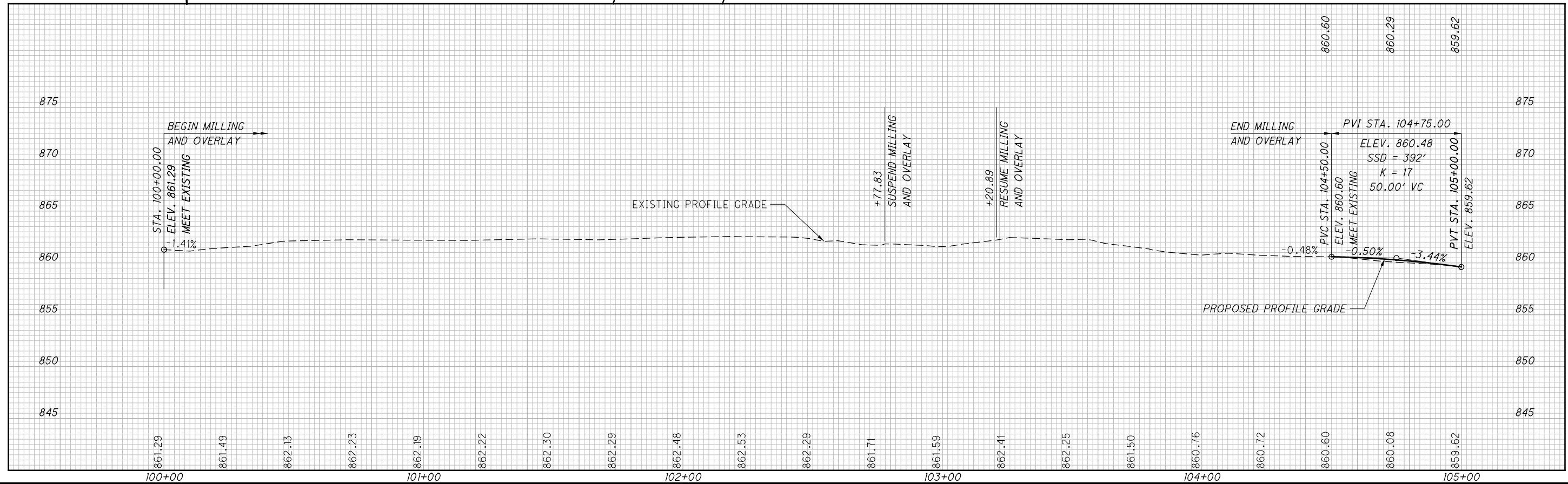
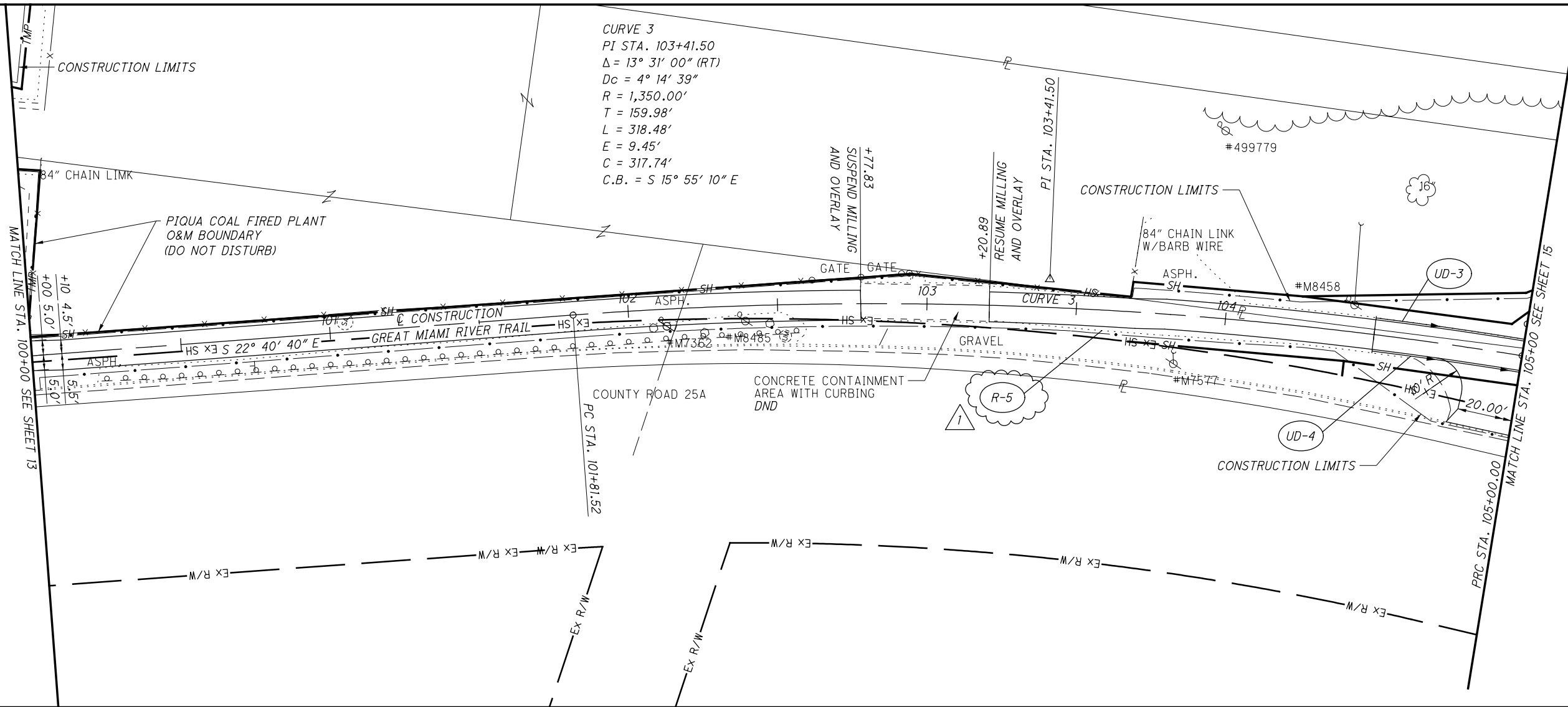
CALCULATED  
JLM  
CHECKED  
SUM

REF NO.	SHEET NO.	STATION TO STATION		202		202		202		601		601		602		605		607		609		611		611		611		611		630		630		642		642		642		670	
				PAVEMENT REMOVED SY	FENCE REMOVED FT	CURB REMOVED FT	TIED CONCRETE BLOCK MAT, TYPE 1 SY	ROCK CHANNEL PROTECTION, TYPE B WITH GEOTEXTILE FABRIC CY	CONCRETE MASONRY CY	6" DEEP PIPE UNDERDRAINS FT	FENCE, MISC.:WOOD FENCE FT	CURB, TYPE 6 FT	6" CONDUIT, TYPE F FOR UNDERDRAIN OUTLETS FT	12" CONDUIT, TYPE C FT	12" CONDUIT, TYPE D FT	CATCH BASIN, NO. 2-2B WITH BICYCLE SAFE GRATE EACH	PRECAST REINFORCED CONCRETE OUTLET EACH	GROUND MOUNTED SUPPORT, NO. 2 POST FT	SIGN, FLAT SHEET SF	TRANSVERSE/DIAGONAL LINE, TYPE 1 FT	PARKING LOT STALL MARKING, TYPE 1 FT	HANDICAP SYMBOL MARKING, TYPE 1 EACH	SLOPE EROSION PROTECTION SY																		
R-1	13	98+13.89																																							
R-2	13	98+13.89	TO	100+00.00																																					
R-3	16	114+26.47																																							
R-4	16,17	114+20.37	TO	116+25.00																																					
R-5	14,15	103+20.89	TO	106+08.86																																					
R-6	15	106+48.94	TO	107+33.72																																					
C-1	13	98+75.14																			11																				
D-1	15	106+08.54	TO	106+19.11																			11																		
D-2	15	106+36.82	TO	106+47.50																			11																		
D-3	16	110+00.00	TO	110+37.47																																					
D-4	16	114+00.50	TO	114+50.00																																					
F-1	15	105+80.74	TO	106+67.69																																					
F-2	15	105+85.15	TO	106+67.69																																					
F-3	16	110+00.00	TO	110+79.44																																					
F-4	16	110+25.00	TO	110+79.55																																					
F-5	16	114+00.00	TO	114+08.68																																					
F-6	16	114+00.00	TO	114+85.00																																					
RC-1	15	106+28.17																																							
RC-2	16	110+83.25	TO	111+30.99																																					
RC-3	16	113+56.83	TO	113+96.75																																					
SE-1	15, 16	106+50.00	TO	110+79.45																																					
SE-2	15, 16	106+50.00	TO	110+13.31																																					
SE-3	16	110+22.99	TO	110+79.55																																					
SE-4	16, 17	114+24.81	TO	116+25.00																																					
SE-5	16, 17	114+15.00	TO	116+25.00																																					
UD-1	13	97+00.00	TO	99+50.78																																					
UD-2	13	97+00.00	TO	99+50.77																																					
UD-3	14, 15	104+50.00	TO	106+05.20																																					
UD-4	14, 15	104+50.00	TO	106+05.19																																					
UD-5	15, 16	106+50.56	TO	110+63.90																																					
UD-6	15, 16	106+50.56	TO	110+64.09																																					
UD-7	16, 17	114+25.66	TO	116+25.00																																					
UD-8	16, 17	114+16.09	TO	116+25.00																																					
PM-1	34																																								
PM-2	34																																								
PM-3	34																																								
S-1	34																																								
TOTALS CARRIED TO GENERAL SUMMARY																																									
				2454	65	181	1	390	1																																

1

1 REVISED 05/04/22

O:\City of Piqua\010902A.01 - Great Miami Pedestrian Bridge\roadway\sheets\081606P001.dgn 5/4/2022 3:18:14 PM jmillman

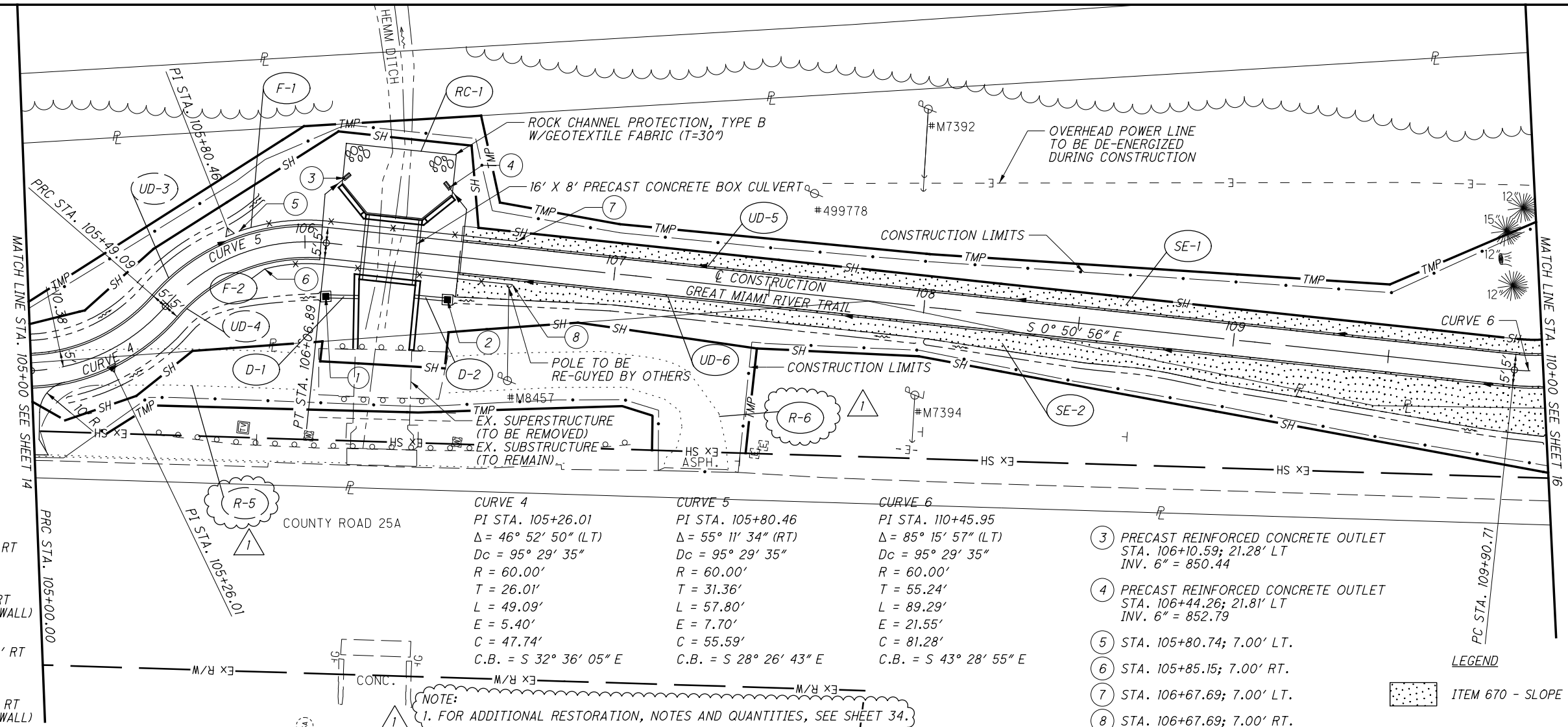


1 REVISED 05/04/22



PLAN AND PROFILE - GREAT MIAMI RIVER TRAIL  
 STA. 100+00.00 TO STA. 105+00.00

O:\City of Piqua\010902A.01 - Great Miami Pedestrian Bridge\08160\roadway\sheets\08160GP002.dgn 5/4/2022 3:18:15 PM jmillman

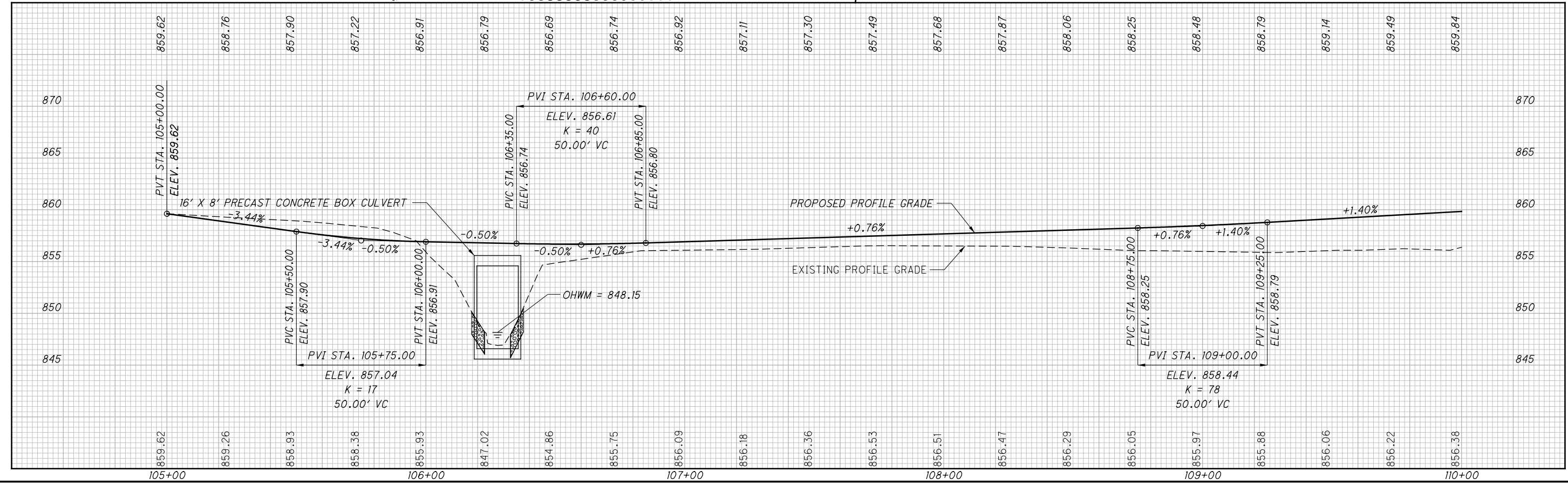


- ① CB-2-2B  
 STA. 106+08.54; 17.11' RT  
 GRATE = 855.41  
 INV. 12" = 852.50  
  
 STA. 106+19.11; 16.19' RT  
 INV. 12" = 850.00 (IN WALL)
- ② CB-2-2B  
 STA. 106+47.50; 14.00' RT  
 GRATE = 854.28  
 INV. 12" = 852.50  
  
 STA. 106+36.82; 14.12' RT  
 INV. 12" = 850.00 (IN WALL)

CURVE 4	CURVE 5	CURVE 6
PI STA. 105+26.01	PI STA. 105+80.46	PI STA. 110+45.95
$\Delta = 46^\circ 52' 50''$ (LT)	$\Delta = 55^\circ 11' 34''$ (RT)	$\Delta = 85^\circ 15' 57''$ (LT)
Dc = 95' 29' 35"	Dc = 95' 29' 35"	Dc = 95' 29' 35"
R = 60.00'	R = 60.00'	R = 60.00'
T = 26.01'	T = 31.36'	T = 55.24'
L = 49.09'	L = 57.80'	L = 89.29'
E = 5.40'	E = 7.70'	E = 21.55'
C = 47.74'	C = 55.59'	C = 81.28'
C.B. = S 32° 36' 05" E	C.B. = S 28° 26' 43" E	C.B. = S 43° 28' 55" E

- ③ PRECAST REINFORCED CONCRETE OUTLET  
 STA. 106+10.59; 21.28' LT  
 INV. 6" = 850.44
  - ④ PRECAST REINFORCED CONCRETE OUTLET  
 STA. 106+44.26; 21.81' LT  
 INV. 6" = 852.79
  - ⑤ STA. 105+80.74; 7.00' LT.
  - ⑥ STA. 105+85.15; 7.00' RT.
  - ⑦ STA. 106+67.69; 7.00' LT.
  - ⑧ STA. 106+67.69; 7.00' RT.
- LEGEND  
 ITEM 670 - SLOPE EROSION PROTECTION

NOTE:  
 1. FOR ADDITIONAL RESTORATION, NOTES AND QUANTITIES, SEE SHEET 34.



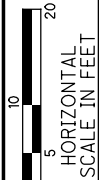
MIA-GREAT MIAMI RIVER TRAIL BRIDGE  
 PLAN AND PROFILE - GREAT MIAMI RIVER TRAIL  
 STA. 105+00.00 TO STA. 110+00.00

REVISIONS  
 1 REVISED 05/04/22

CALCULATED JMD  
 CHECKED JRW

HORIZONTAL SCALE IN FEET  
 1" = 40'

15/80



CALCULATED JAH  
CHECKED JRW

REVISION 05/04/22

**PARKING LOT DETAIL**

**MIA-GREAT MIAMI RIVER TRAIL BRIDGE**

COUNTY ROAD 25A

CONSTRUCTION LIMITS

98+85.23  
55.64' RT  
98+68.85  
107.58' RT  
96+00.00  
172.25' RT  
96+00.00  
163.48' RT

CURB, TYPE 6,  
AS PER PLAN

98+68.85  
38.65' RT

98+57.33  
80.00' RT

PC STA. 98+65.00

SAW CUT  
LINE

98+44.93  
26.05' RT

98+44.93  
10.00' RT

EXISTING PARKING  
LOT TO BE SEAL COATED (1,439 SY)  
AND RE-STRIPED

96+27.55  
91.18' RT

96+37.21  
93.57' RT

5' RADIUS  
(TYP.)

98+34.93  
19.39' RT  
98+34.93  
10.00' RT  
98+06.33  
16.79' RT

S 48° 56' 31" W

PM-1

PM-2

PM-3

3

11

\* EX. PARKING BLOCK  
TO BE RELOCATED  
(TYP.)

CONSTRUCTION LIMITS

96+56.87  
64.90' RT

PT STA. 97+80.34

PC STA. 97+08.81

S 19° 21' 41" E

**NOTE:**

THE AREA WHERE THE EXISTING PARKING LOT PAVEMENT IS REMOVED AND EXISTING PATH REMOVAL AREAS DENOTED AS "R1" AND "R4" THRU "R6" SHALL BE RESTORED WITH TOPSOIL AND SEEDING TO THE GRADE OF THE EXISTING PAVEMENT BEING REMOVED. THE FOLLOWING ESTIMATED QUANTITIES ARE INCLUDED IN THE GENERAL SUMMARY FOR THIS WORK.

ITEM 659 - TOP SOIL	267 CU. YD.
ITEM 659 - SEEDING AND MULCHING, AS PER PLAN	1,741 SQ. YD.
ITEM 659 - REPAIR SEEDING AND MULCHING	88 SQ. YD.
ITEM 659 - COMMERCIAL FERTILIZER	0.25 TON
ITEM 659 - LIME	0.37 ACRE
ITEM 659 - WATER	9 M. GAL

ITEM 422: EMULSION, CHIP SEAL, AS PER PLAN

\* COST IS INCIDENTAL TO  
ITEM 422: EMULSION CHIP SEAL, AS PER PLAN

O:\City of Piqua\010902A.01 - Great Miami Pedestrian Bridge\08160\roadway\sheets\08160GA001.dgn 5/4/2022 3:18:17 PM jmelman

O:\City of Piqua\010902A.01 - Great Miami Pedestrian Bridge\108160\structures\M01BK\_11080\sheets\BK\_11080C\_sq001.dgn 5/16/2022 1:58:30 PM jmillman

ESTIMATED QUANTITIES

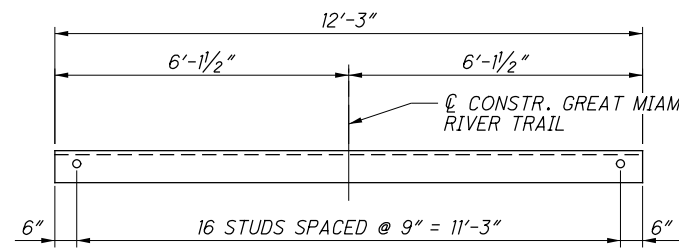
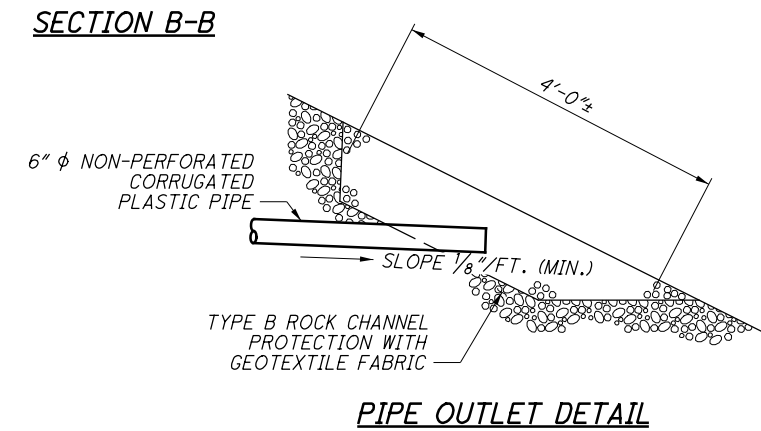
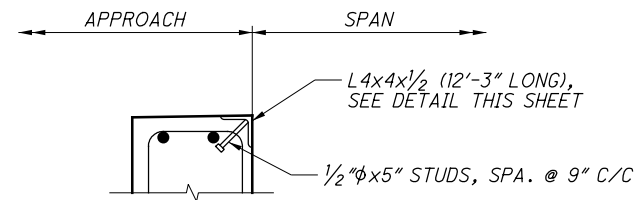
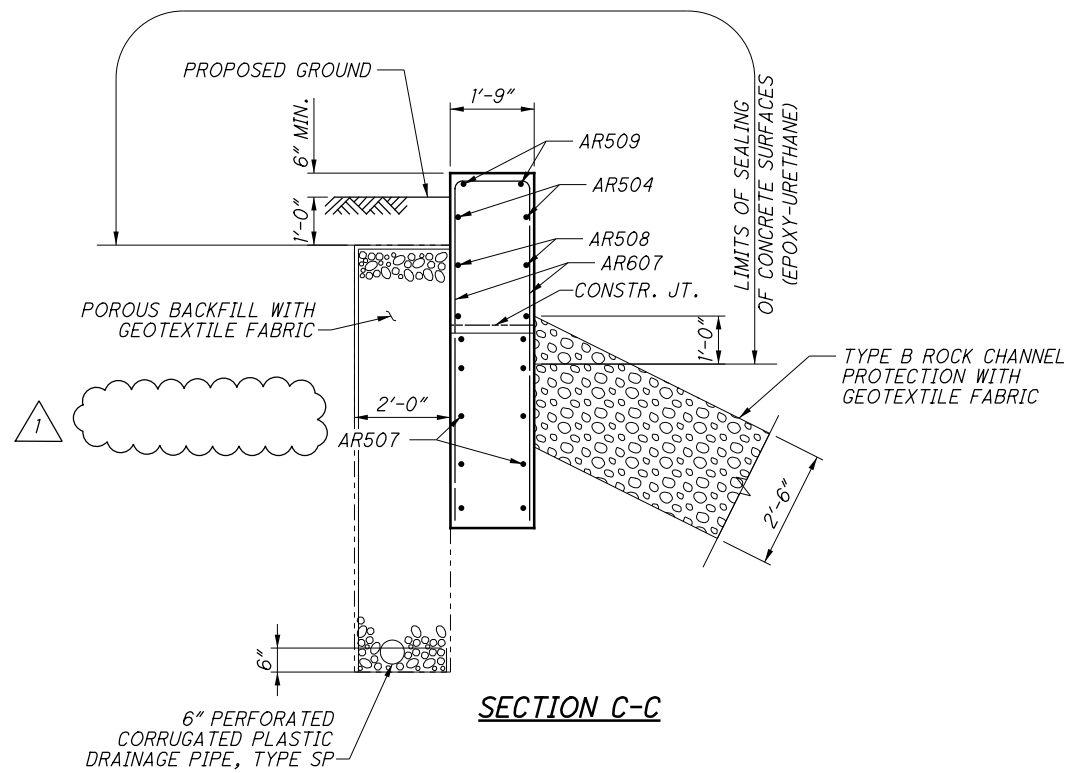
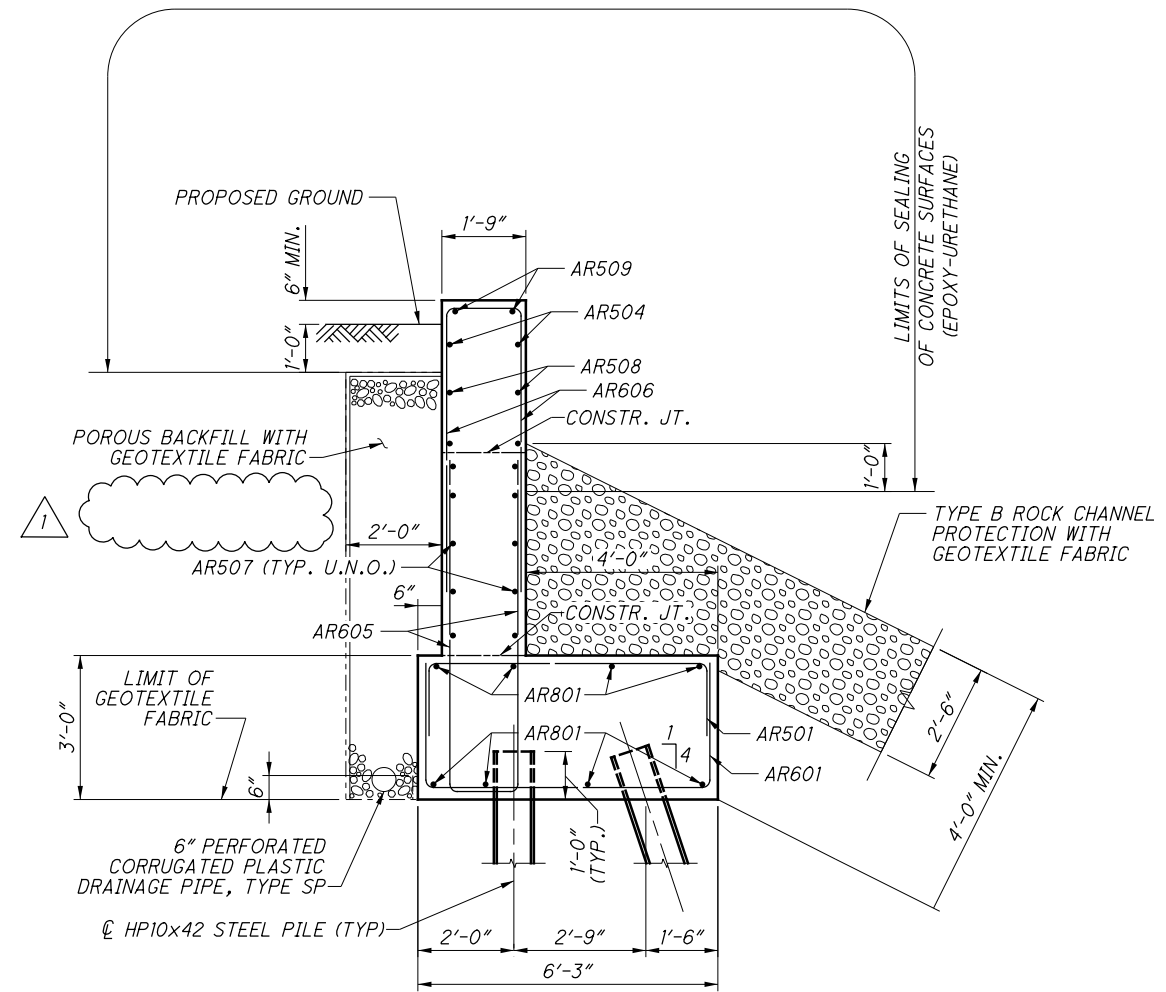
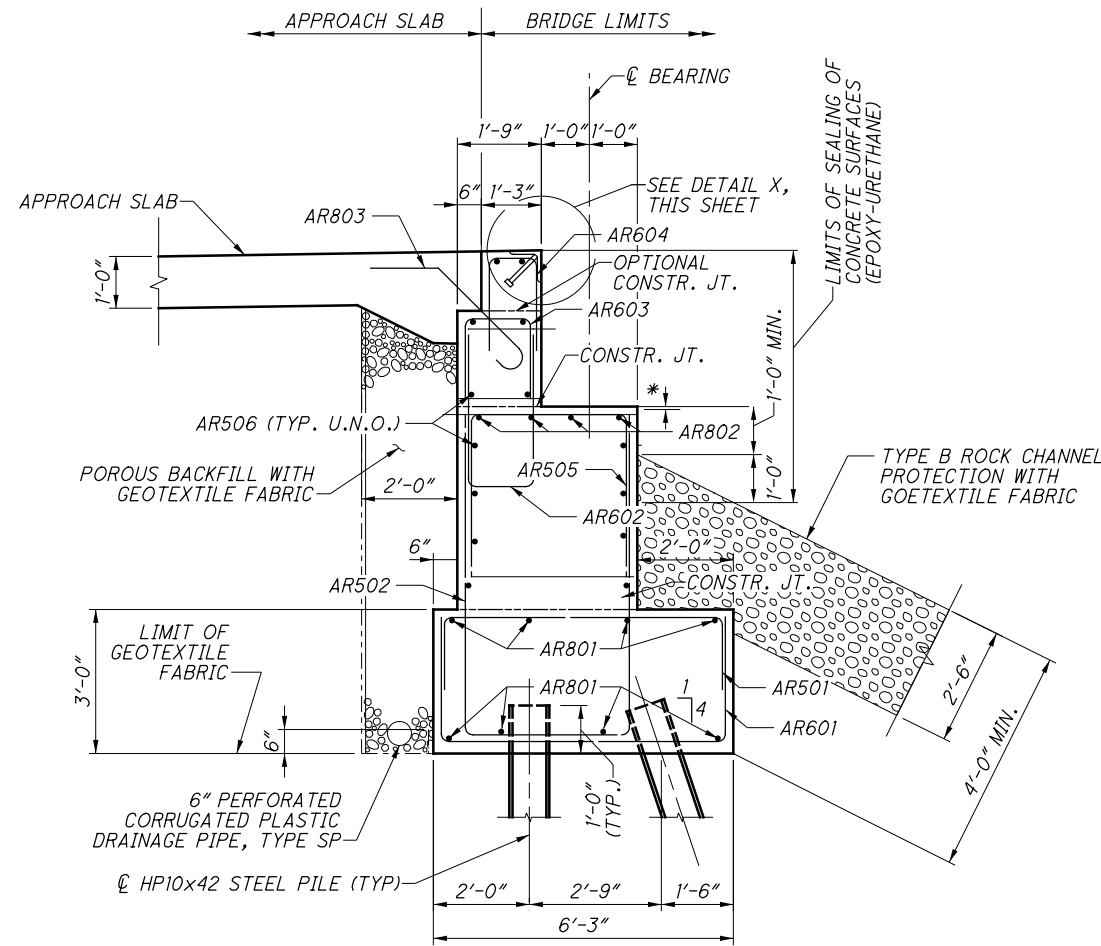
ITEM	ITEM EXTENSION	TOTAL	UNIT	DESCRIPTION	ABUTMENTS	PIERS	SUPERSTRUCTURE	GENERAL	SHEET NO.
503	11100	LUMP		COFFERDAMS AND EXCAVATION BRACING					
503	21300	LUMP		UNCLASSIFIED EXCAVATION					
503	31500	LUMP		STRUCTURAL EXCAVATION, MISC.: CHANNEL EXCAVATION					1/14
505	11100	LUMP		PILE DRIVING EQUIPMENT MOBILIZATION					
507	00100	240	FT	STEEL PILES HP 10X42, FURNISHED	240				
507	00150	210	FT	STEEL PILES HP 10X42, DRIVEN	210				
507	93300	6	EACH	STEEL POINTS OR SHOES	6				
509	10000	15,492	POUND	EPOXY COATED REINFORCING STEEL	5,583	9,909			
511	42010	35	CU YD	CLASS QCI CONCRETE, PIER ABOVE FOOTINGS		35			
511	44110	39	CU YD	CLASS QCI CONCRETE, ABUTMENT NOT INCLUDING FOOTINGS	39				
511	46510	30	CU YD	CLASS QCI CONCRETE, FOOTING	23	7			
512	10100	140	SQ YD	SEALING OF CONCRETE SURFACES (EPOXY-URETHANE)	53	87			
516	10501	37	FT	STRUCTURAL EXPANSION JOINT INCLUDING ELASTOMERIC COMPRESSION, SEAL AS PER PLAN	25	12			6/14
518	21200	35	CU YD	POROUS BACKFILL WITH GEOTEXTILE FABRIC	35				
518	40000	66	FT	6" PERFORATED PLASTIC PIPE	66				
518	40010	35	FT	6" NON PERFORATED PLASTIC PIPE, INCLUDING SPECIALS	35				
524	94604	18	FT	DRILLED SHAFTS, 30" DIAMETER, INTO BEDROCK	18				
524	94702	8	FT	DRILLED SHAFTS, 36" DIAMETER, ABOVE BEDROCK	8				
524	94908	10	FT	DRILLED SHAFTS, 54" DIAMETER, INTO BEDROCK		10			
524	94914	11	FT	DRILLED SHAFTS, 60" DIAMETER, ABOVE BEDROCK		11			
526	10000	40	SQ YD	REINFORCED CONCRETE APPROACH SLABS (T=12")				40	
SPECIAL	530E00200	LUMP		STRUCTURE, MISC.: PREFABRICATED BRIDGE			1		2/14
SPECIAL	530E13000	372	SQ FT	FORM LINER		372			2/14
625	33000	1	EACH	STRUCTURE GROUNDING SYSTEM			1		

QUANTITIES COMPUTED BY: JLM 6/21  
QUANTITIES CHECKED BY: SJM 6/21

REVISION 05/16/22

	DATE 7-21	REVIEWED DWS	STRUCTURE FILE NUMBER 5563674	<b>ESTIMATED QUANTITIES</b> GREAT MIAMI RIVER TRAIL BRIDGE OVER GREAT MIAMI RIVER	DESIGNED JLM CHECKED SJM	DRAWN JLM REVISED
MIA-GREAT MIAMI RIVER TRAIL BRIDGE PID No. 108160				7 / 14	49 80	

O:\City of Piqua\010902A.01 - Great Miami Pedestrian Bridge\108160\_structures\MOTBIK\_11080\sheets\BIK\_11080C\_sr002.dgn 5/5/2022 8:56:34 AM jmillman



**NOTES**

1. FOR GENERAL NOTES, SEE SHEETS 2/14 THRU 6/14.
2. FOR REINFORCING STEEL LIST, SEE SHEETS 13/14 THRU 14/14.
3. CONSTRUCT BACKWALL ONLY AFTER PREFABRICATED BRIDGE HAS BEEN SET.
4. GROUND STEEL SUPERSTRUCTURE PER ODOT HL-50.21. TWO INSTALLATIONS PER EACH PIER AND ABUTMENT SHALL BE USED.
5. CLEAR COVER TO REINFORCING BARS AT THE BOTTOM OF DRILLED SHAFTS AND BOTTOM OF FOOTING SHALL BE 3".
6. BACKWALL JOINT ARMOR SHALL BE IN ACCORDANCE WITH C&MS 516. SEE SHEET 6/14 FOR PAYMENT DETAILS.

**MINIMUM LAP LENGTHS**

- NO. 5 BAR = 2'-5"
- NO. 6 BAR = 3'-7"
- NO. 8 BAR = 4'-9"

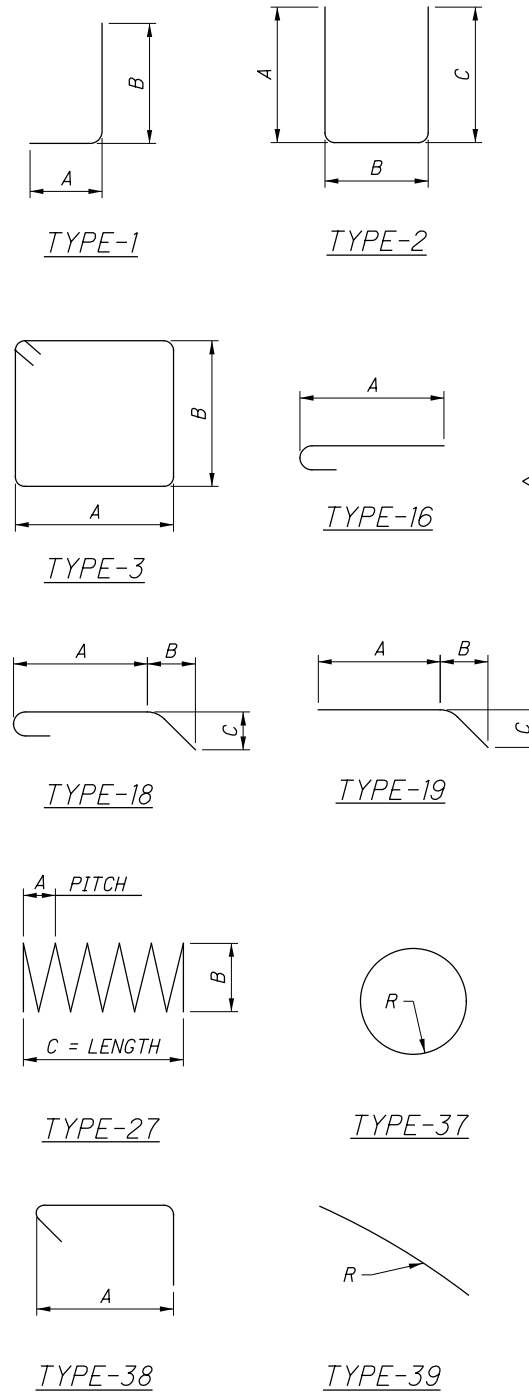
REVISED 05/05/22

	DESIGN AGENCY LIB Inc. • 2500 Newmark Drive Miamiburg, OH 45342 1937 256-0000 (tel) • (937) 296-5100 (fax) • libinc.com	DATE 7-21	REVISIONS DWS 7-21 STRUCTURE FILE NUMBER 5563674	REAR ABUTMENT SECTIONS GREAT MIAMI RIVER TRAIL BRIDGE OVER GREAT MIAMI RIVER	MIA-GREAT MIAMI RIVER TRAIL BRIDGE PID No. 108160
DESIGNED SUM CHECKED JLM	DRAWN SUM REVISIONS JLM	DATE 7-21	FILE NUMBER 5563674		
9 / 14					
51 80					

MARK	NUMBER		LENGTH	WEIGHT	TYPE	DIMENSIONS							
	RA	FA				TOTAL	A	B	C	D	E	R	INC
AR501	16		16	7'-4"	122	2	10"	5'-11"	10"				
AR502	10		10	16'-10"	176	2	6'-10"	3'-5"	6'-10"				
AR503	2		2	14'-10"	31	2	5'-10"	3'-5"	5'-10"				
AR504	4		4	5'-4"	22	STR.							
AR505	12		12	8'-0"	100	2	2'-5"	3'-5"	2'-5"				
AR506	12		12	15'-6"	194	STR.							
AR507	24		24	10'-10"	271	STR.							
AR508	4		4	8'-2"	34	STR.							
AR509	4		4	8'-8"	36	19	7'-8"	11"	4"				
AR601	16		16	10'-9"	258	2	2'-7"	5'-11"	2'-7"				
AR602	12		12	8'-1"	146	2	3'-6"	1'-5"	3'-6"				
AR603	12		12	4'-3"	77	2	1'-7"	1'-5"	1'-7"				
AR604	8		8	4'-9"	57	2	2'-1"	11"	2'-1"				
AR605	6		6	14'-9"	133	2	6'-10"	1'-5"	6'-10"				
	2			13'-9"			6'-4"		6'-4"				
AR606	SER. OF		6	TO	126	2	TO	1'-5"	TO			3"	
	3			14'-3"			6'-7"		6'-7"				
	2			9'-11"			4'-5"		4'-5"				
AR607	SER. OF		14	TO	252	2	TO	1'-5"	TO			8 11/16"	
	7			14'-1"			6'-6"		6'-6"				
AR608	4		4	5'-3"	32	2	2'-1"	1'-5"	2'-1"				
AR801	8		8	19'-6"	417	STR.							
AR802	4		4	15'-6"	166	STR.							
AR803	9		9	4'-9"	114	18	2'-7"	1'-0"	1'-0"				
AF501		2	2	19'-6"	41	STR.							
AF502		19	19	5'-1"	101	2	10"	3'-8"	10"				
AF503		13	13	16'-8"	226	2	6'-9"	3'-5"	6'-9"				
AF504		13	13	8'-0"	108	2	2'-5"	3'-5"	2'-5"				
AF505		12	12	15'-6"	194	STR.							
AF506		24	24	10'-10"	271	STR.							
AF507		4	4	8'-2"	34	STR.							
AF508		4	4	8'-8"	36	19	7'-11"	9"	3"				
AF509		4	4	5'-3"	22	STR.							
AF601		19	19	8'-6"	243	2	2'-7"	3'-8"	2'-7"				
AF602		13	13	8'-1"	158	2	3'-6"	1'-5"	3'-6"				
AF603		13	13	4'-3"	83	2	1'-7"	1'-5"	1'-7"				
AF604		9	9	4'-9"	64	2	2'-1"	11"	2'-1"				
AF605		6	6	14'-7"	131	2	6'-9"	1'-5"	6'-9"				
		2		13'-9"			6'-4"		6'-4"				
AF606	SER. OF		6	TO	126	2	TO	1'-5"	TO			3"	
	3			14'-3"			6'-7"		6'-7"				
	2			9'-11"			4'-5"		4'-5"				
AF607	SER. OF		14	TO	252	2	TO	1'-5"	TO			8 5/16"	
	7			14'-1"			6'-6"		6'-6"				
AF608	4		4	5'-3"	32	2	2'-1"	1'-5"	2'-1"				
AF801	8		8	19'-6"	417	STR.							
AF802	4		4	15'-6"	166	STR.							
AF803	9		9	4'-9"	114	18	2'-7"	1'-0"	1'-0"				
				SUBTOTAL	5583	1							
FOR INFORMATION ONLY - INCLUDED WITH ITEM 524 FOR PAYMENT													
DS401		3	3	171'-3"	343	27	4"	2'-0"	8'-3"				
DS402		15	15	6'-0"	60	37						1'-0"	
DS801		39	39	11'-9"	1224	16	10'-10"						

1

**BENDING DIAGRAMS**



**NOTES:**

1. ALL REINFORCING STEEL BARS SHALL BE EPOXY COATED.
2. ALL DIMENSIONS ARE OUT TO OUT OF BAR.
3. RADIUS DIMENSION "R" IS TO THE OUTSIDE OF THE BAR.
4. THE BAR SIZE NUMBER IS SPECIFIED ON THE PLANS IN THE BAR MARK COLUMN. THE FIRST DIGIT WHERE THREE DIGITS ARE USED, AND THE FIRST TWO DIGITS WHERE FOUR ARE USED, INDICATES THE BAR SIZE NUMBER.
5. ALL REINFORCING CLEARANCES ARE 2" UNLESS OTHERWISE NOTED IN THE PLANS.

REVISED 05/16/22

DESIGN AGENCY  
LIB Inc. • 2500 Newmark Drive  
Miamisburg, OH 45342  
1937 256-0000 (tel) • (937) 256-5100 (fax) • libinc.com

**REINFORCING STEEL LIST**

GREAT MIAMI RIVER TRAIL BRIDGE  
OVER GREAT MIAMI RIVER

MIA-GREAT MIAMI RIVER TRAIL BRIDGE  
PID No. 108160

DESIGNED	DRAWN	REVIEWED	DATE
JLM	JLM	DWS	7-21
CHECKED	REVISSED	STRUCTURE FILE NUMBER	
SUM		5563674	

13 / 14

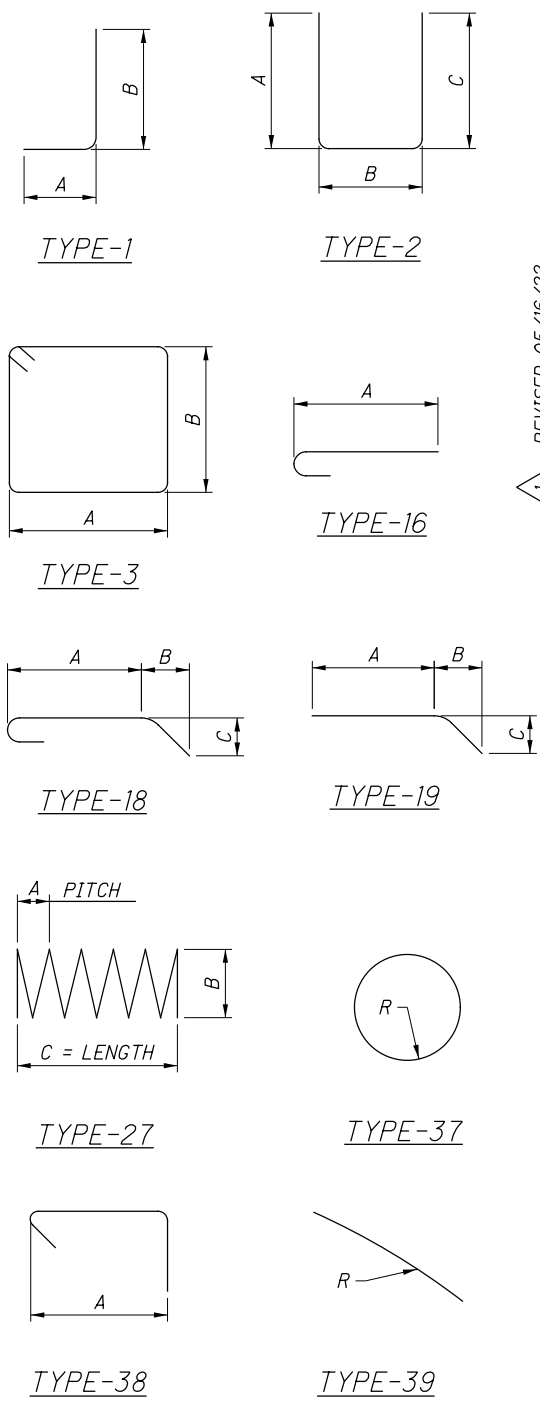
55  
80



MARK	NUMBER		LENGTH	WEIGHT	TYPE	DIMENSIONS							
	PIER	TOTAL				A	B	C	D	E	R	INC	
P401	9	9	17'-6"	105	3	4'-6"	4'-0"						
P402	9	9	5'-6"	33	38	4'-6"							
P403	18	18	5'-0"	60	38	4'-0"							
P404	12	12	22'-6"	180	3	2'-7"	8'-5"						
P405	4	4	20'-5"	55	3	2'-7"	7'-4 1/2"						
P406	4	4	19'-0"	51	3	2'-7"	6'-7 3/4"						
P407	4	4	17'-10"	48	3	2'-7"	6'-0 3/4"						
P408	4	4	16'-10"	45	3	2'-7"	5'-7"						
P409	4	4	16'-0"	43	3	2'-7"	5'-1 3/4"						
P410	4	4	15'-3"	41	3	2'-7"	4'-9 1/4"						
P411	4	4	14'-7"	39	3	2'-7"	4'-5 1/4"						
P412	4	4	14'-0"	37	3	2'-7"	4'-1 3/4"						
P413	4	4	13'-5"	36	3	2'-7"	3'-10 1/2"						
P414	4	4	12'-11"	35	3	2'-7"	3'-7 1/2"						
P415	4	4	12'-6"	33	3	2'-7"	3'-5"						
P416	4	4	12'-2"	33	3	2'-7"	3'-2 3/4"						
P417	4	4	11'-9"	31	3	2'-7"	3'-0 1/2"						
P418	4	4	11'-6"	31	3	2'-7"	2'-10 3/4"						
P419	4	4	11'-2"	30	3	2'-7"	2'-9"						
P501	51	51	17'-7"	935	3	4'-6"	4'-0"						
P502	120	120	5'-8"	709	38	4'-6"							
P503	141	141	5'-2"	760	38	4'-0"							
P504	3	3	5'-9"	18	38	4'-6 1/2"							
P505	3	3	5'-9"	18	38	4'-7 1/4"							
P506	3	3	5'-10"	18	38	4'-8 1/4"							
P507	3	3	5'-11"	19	38	4'-9 1/4"							
P508	3	3	6'-1"	19	38	4'-10 3/4"							
P509	3	3	6'-3"	20	38	5'-0 1/2"							
P510	3	3	6'-5"	20	38	5'-2 1/2"							
P511	1	1	17'-8"	18	3	4'-6 1/2"	4'-0"						
P512	1	1	17'-9"	19	3	4'-7 1/4"	4'-0"						
P513	1	1	17'-11"	19	3	4'-8 1/4"	4'-0"						
P514	1	1	18'-1"	19	3	4'-9 1/4"	4'-0"						
P515	1	1	18'-4"	19	3	4'-10 3/4"	4'-0"						
P516	1	1	18'-8"	19	3	5'-0 1/2"	4'-0"						
P517	1	1	19'-0"	20	3	5'-2 1/2"	4'-0"						
P601	2	2	5'-9"	17	STR.								
P602	2	2	6'-4"	19	STR.								
P603	2	2	7'-1"	21	STR.								
P604	2	2	8'-0"	24	STR.								
P605	2	2	9'-2"	28	STR.								
P606	2	2	10'-8"	32	STR.								
P607	2	2	12'-7"	38	STR.								
P608	8	8	15'-6"	186	STR.								
P609	24	24	3'-1"	111	STR.								
P610	4	4	7'-0"	42	STR.								
P901	8	8	19'-11"	542	2	2'-6"	15'-6"	2'-6"					
P902	8	8	10'-4"	281	39							8'-3"	
P903	30	30	11'-7"	1181	16	10'-4"							
P904	30	30	30'-3"	3086	STR.								
P905	28	28	7'-0"	666	STR.								
			SUBTOTAL	9909									
			TOTAL	15492									
FOR INFORMATION ONLY - INCLUDED WITH ITEM 524 FOR PAYMENT													
DS501	1	1	79'-5"	825	27	3.5"	3'-6"	20'-5"					
DS502	11	11	10'-10"	124	37							1'-9"	
DS1101	15	15	29'-7"	2358	STR.								

1

**BENDING DIAGRAMS**



- NOTES:**
1. ALL REINFORCING STEEL BARS SHALL BE EPOXY COATED.
  2. ALL DIMENSIONS ARE OUT TO OUT OF BAR.
  3. RADIUS DIMENSION "R" IS TO THE OUTSIDE OF THE BAR.
  4. THE BAR SIZE NUMBER IS SPECIFIED ON THE PLANS IN THE BAR MARK COLUMN. THE FIRST DIGIT WHERE THREE DIGITS ARE USED, AND THE FIRST TWO DIGITS WHERE FOUR ARE USED, INDICATES THE BAR SIZE NUMBER.
  5. ALL REINFORCING CLEARANCES ARE 2" UNLESS OTHERWISE NOTED IN THE PLANS.

REVISION 05/16/22

DESIGN AGENCY: JLB Inc. • 2500 Newmark Drive • Miamisburg, OH 45342 • 1937 295-0000 (tel) • 1937 295-5100 (fax) • jlbinc.com

DATE: 7-21

REVIEWED: DWS

DRAWN: JLM

DESIGNED: JLM

CHECKED: JLM

STRUCTURE FILE NUMBER: 5563674

REVISOR: SUM

REINFORCING STEEL LIST

GREAT MIAMI RIVER TRAIL BRIDGE

OVER GREAT MIAMI RIVER

MIA-GREAT MIAMI RIVER TRAIL BRIDGE

PID No. 108160

14 / 14

56 / 80