

O:\City of Piqua\010902A.01 - Great Miami Pedestrian Bridge\08160\roadway\sheets\08160GG001.dgn 5/20/2022 12:27:05 PM jmelman

SHEET NUM.										PART.	ITEM	ITEM	GRAND	UNIT	DESCRIPTION	SEE SHEET NO.	
5	11	12	XS	33	34					01/S>2/BR	EXT	TOTAL					
															ROADWAY		
										1	LS	11000	LS		CLEARING AND GRUBBING		
										1	2,454	23000	2,454	SY	PAVEMENT REMOVED		
										2	181	32000	181	FT	CURB REMOVED		
										2	278	10000	278	CY	EXCAVATION		
											862	20000	862	CY	EMBANKMENT		
											1,911	10000	1,911	SY	SUBGRADE COMPACTION		
											243	13000	243	CY	EXCAVATION OF SUBGRADE		
											256	30010	256	CY	GRANULAR MATERIAL, TYPE B		
											1	45000	1	HOUR	PROOF ROLLING		
											1,060	50000	1,060	SY	GEOTEXTILE FABRIC		
											424	98000	424	FT	FENCE, MISC.:WOOD FENCE	5	
															EROSION CONTROL		
											1	21050	1	SY	TIED CONCRETE BLOCK MAT WITH TYPE 1 UNDERLAYMENT		
											390	32104	390	CY	ROCK CHANNEL PROTECTION, TYPE B WITH GEOTEXTILE FABRIC		
											2	00100	2	EACH	SOIL ANALYSIS TEST		
											551	00300	551	CY	TOPSOIL		
											4,293	10001	4,293	SY	SEEDING AND MULCHING, AS PER PLAN	5	
											216	14000	216	SY	REPAIR SEEDING AND MULCHING		
											0.61	20000	0.61	TON	COMMERCIAL FERTILIZER		
											0.91	31000	0.91	ACRE	LIME		
											24	35000	24	MGAL	WATER		
											939	00500	939	SY	SLOPE EROSION PROTECTION		
											LS	832	15000	LS	STORM WATER POLLUTION PREVENTION PLAN		
											LS	832	15002	LS	STORM WATER POLLUTION PREVENTION INSPECTIONS		
											LS	832	15010	LS	STORM WATER POLLUTION PREVENTION INSPECTION SOFTWARE		
											28,500	832	30000	28,500	EACH	EROSION CONTROL	
															DRAINAGE		
											1	20000	1	CY	CONCRETE MASONRY		
											2,047	12200	2,047	FT	6" DEEP PIPE UNDERDRAINS		
											143	00510	143	FT	6" CONDUIT, TYPE F FOR UNDERDRAIN OUTLETS		
											64	04600	64	FT	12" CONDUIT, TYPE C		
											51	04900	51	FT	12" CONDUIT, TYPE D		
											3	98480	3	EACH	CATCH BASIN, NO. 2-2B WITH BICYCLE SAFE GRATE		
											4	99710	4	EACH	PRECAST REINFORCED CONCRETE OUTLET		
															PAVEMENT		
											453	01000	453	SY	PAVEMENT PLANING, ASPHALT CONCRETE(1 1/4")		
											309	20000	309	CY	AGGREGATE BASE (6")		
											121	10000	121	GAL	TACK COAT		
											592	10000	592	GAL	PRIME COAT (@ 0.4 GAL/SY)		
											290	25001	290	GAL	EMULSION, CHIP SEAL, AS PER PLAN	5	
											68	50000	68	CY	ASPHALT CONCRETE SURFACE COURSE, TYPE 1, (448), PG64-22(1 1/4")		
											72	50300	72	CY	ASPHALT CONCRETE INTERMEDIATE COURSE, TYPE 2, (448)(1 3/4")		
											11	26000	11	FT	CURB, TYPE 6		
															TRAFFIC CONTROL		
											12	02100	12	FT	GROUND MOUNTED SUPPORT, NO. 2 POST		
											1.5	80100	1.5	SF	SIGN, FLAT SHEET		
											209	00700	209	FT	TRANSVERSE/DIAGONAL LINE, TYPE 1		
											320	01200	320	FT	PARKING LOT STALL MARKING, TYPE 1		
											1	01702	1	EACH	HANDICAP SYMBOL MARKING, TYPE 1		
															STRUCTURE 20 FOOT SPAN AND UNDER (BOX CULVERT)		
															FOR ESTIMATED QUANTITIES SEE SHEET 37		
															STRUCTURE OVER 20 FOOT SPAN (PREFABRICATED TRUSS)		
															FOR ESTIMATED QUANTITIES SEE SHEET 49		
															INCIDENTALS		
											LS	614	11000	LS	MAINTAINING TRAFFIC		
											8	16010	8	MNTH	FIELD OFFICE, TYPE B		
											LS	623	10000	LS	CONSTRUCTION LAYOUT STAKES AND SURVEYING		
											LS	624	10000	LS	MOBILIZATION		
											LS	SPECIAL	69071000	LS	ASBESTOS ABATEMENT (EXISTING STRUCTURE OVER HEMM DITCH)	6	

1 REVISED 05/04/22

2

2 REVISED 05/20/22

CALCULATED
JLM
CHECKED
SUM

GENERAL SUMMARY

MIA-GREAT MIAMI RIVER TRAIL BRIDGE

REF NO.	SHEET NO.	STATION TO STATION		202		202		202		601		601		602		605		607		609		611		611		611		611		630		630		642		642		642		670		
				PAVEMENT REMOVED	FENCE REMOVED	CURB REMOVED	TIED CONCRETE BLOCK MAT, TYPE 1	ROCK CHANNEL PROTECTION, TYPE B WITH GEOTEXTILE FABRIC	CONCRETE MASONRY	6" DEEP PIPE UNDERDRAINS	FENCE, MISC.:WOOD FENCE	CURB, TYPE 6	6" CONDUIT, TYPE F FOR UNDERDRAIN OUTLETS	12" CONDUIT, TYPE C	12" CONDUIT, TYPE D	CATCH BASIN, NO. 2-2B WITH BICYCLE SAFE GRATE	PRECAST REINFORCED CONCRETE OUTLET	GROUND MOUNTED SUPPORT, NO. 2 POST	SIGN, FLAT SHEET	TRANSVERSE/DIAGONAL LINE, TYPE 1	PARKING LOT STALL MARKING, TYPE 1	HANDICAP SYMBOL MARKING, TYPE 1	SLOPE EROSION PROTECTION																			
				SY	FT	FT	SY	CY	CY		FT	FT	FT	FT	FT	FT	EACH	EACH	FT	SF	FT	FT	EACH	SY																		
R-1	13	98+13.89																																								
R-2	13	98+13.89	TO	100+00.00																																						
R-3		NOT USED																																								
R-4	16, 17	114+20.37	TO	116+25.00																																						
R-5	14, 15	103+20.89	TO	106+08.86																																						
R-6	15	106+48.94	TO	107+33.72																																						
C-1	13	98+75.14																																								
D-1	15	106+08.54	TO	106+19.11																																						
D-2	15	106+36.82	TO	106+47.50																																						
D-3	16	110+00.00	TO	110+37.47																																						
D-4	16	114+00.50	TO	114+50.00																																						
F-1	15	105+80.74	TO	106+67.69																																						
F-2	15	105+85.15	TO	106+67.69																																						
F-3	16	110+00.00	TO	110+79.44																																						
F-4	16	110+25.00	TO	110+79.55																																						
F-5	16	114+00.00	TO	114+08.68																																						
F-6	16	114+00.00	TO	114+85.00																																						
RC-1	15	106+28.17																																								
RC-2	16	110+83.25	TO	111+30.99																																						
RC-3	16	113+56.83	TO	113+96.75																																						
SE-1	15, 16	106+50.00	TO	110+79.45																																						
SE-2	15, 16	106+50.00	TO	110+13.31																																						
SE-3	16	110+22.99	TO	110+79.55																																						
SE-4	16, 17	114+24.81	TO	116+25.00																																						
SE-5	16, 17	114+15.00	TO	116+25.00																																						
UD-1	13	97+00.00	TO	99+50.78																																						
UD-2	13	97+00.00	TO	99+50.77																																						
UD-3	14, 15	104+50.00	TO	106+05.20																																						
UD-4	14, 15	104+50.00	TO	106+05.19																																						
UD-5	15, 16	106+50.56	TO	110+63.90																																						
UD-6	15, 16	106+50.56	TO	110+64.09																																						
UD-7	16, 17	114+25.66	TO	116+25.00																																						
UD-8	16, 17	114+16.09	TO	116+25.00																																						
PM-1	34																																									
PM-2	34																																									
PM-3	34																																									
S-1	34																																									
TOTALS CARRIED TO GENERAL SUMMARY																																										

2454

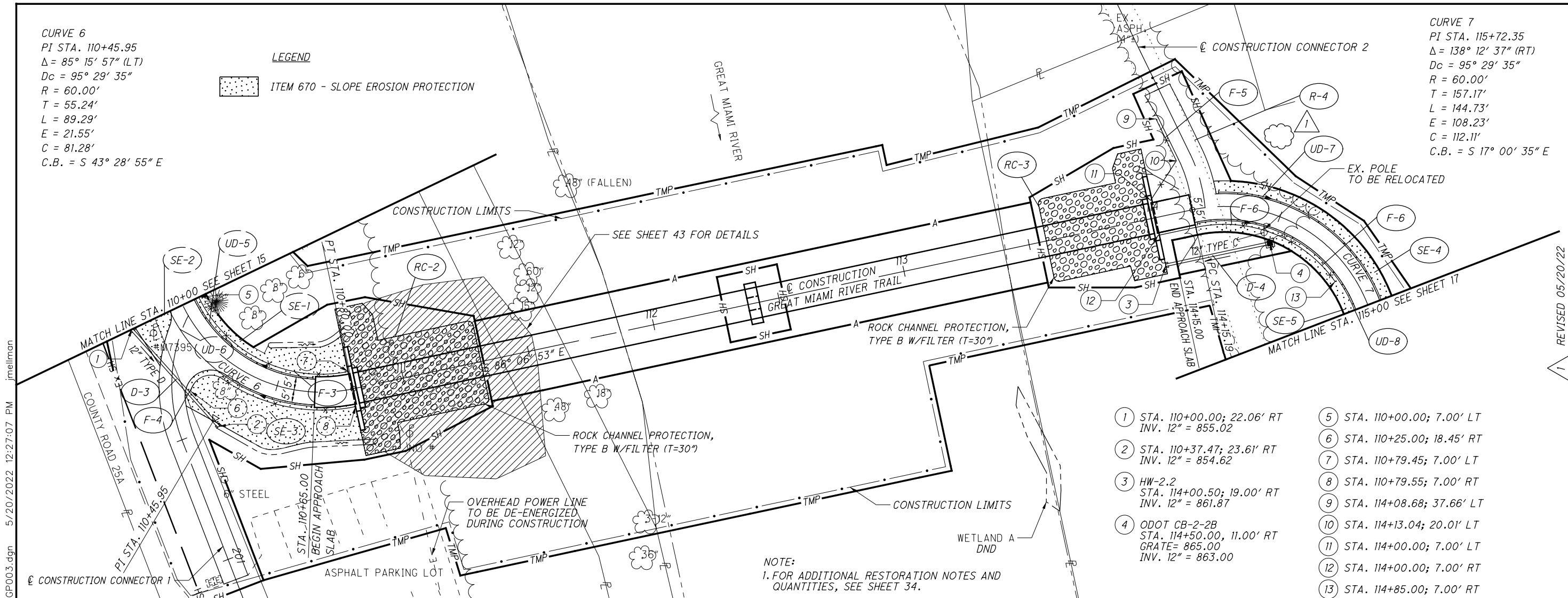
1 REVISED 05/04/22
2 REVISED 05/20/22

CURVE 6
 PI STA. 110+45.95
 $\Delta = 85^\circ 15' 57''$ (LT)
 $D_c = 95^\circ 29' 35''$
 $R = 60.00'$
 $T = 55.24'$
 $L = 89.29'$
 $E = 21.55'$
 $C = 81.28'$
 $C.B. = S 43^\circ 28' 55'' E$

LEGEND

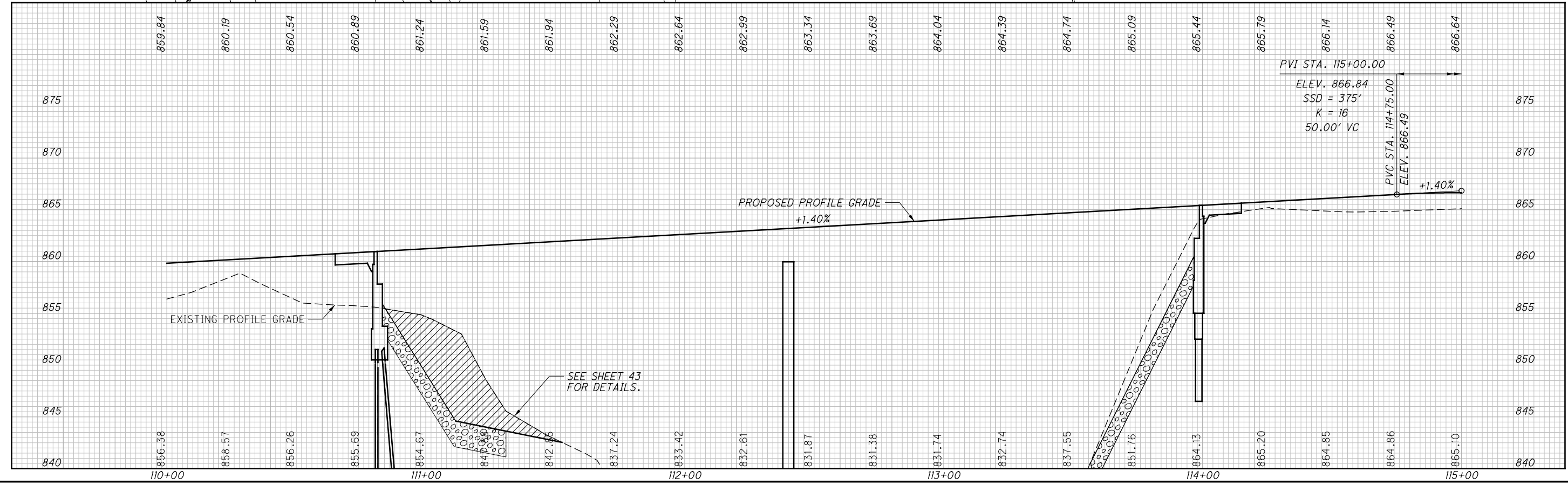
 ITEM 670 - SLOPE EROSION PROTECTION

CURVE 7
 PI STA. 115+72.35
 $\Delta = 138^\circ 12' 37''$ (RT)
 $D_c = 95^\circ 29' 35''$
 $R = 60.00'$
 $T = 157.17'$
 $L = 144.73'$
 $E = 108.23'$
 $C = 112.11'$
 $C.B. = S 17^\circ 00' 35'' E$



- | | |
|---|------------------------------|
| 1 STA. 110+00.00; 22.06' RT
INV. 12" = 855.02 | 5 STA. 110+00.00; 7.00' LT |
| 2 STA. 110+37.47; 23.61' RT
INV. 12" = 854.62 | 6 STA. 110+25.00; 18.45' RT |
| 3 HW-2.2
STA. 114+00.50; 19.00' RT
INV. 12" = 861.87 | 7 STA. 110+79.45; 7.00' LT |
| 4 ODOT CB-2-2B
STA. 114+50.00; 11.00' RT
GRATE= 865.00
INV. 12" = 863.00 | 8 STA. 110+79.55; 7.00' RT |
| | 9 STA. 114+08.68; 37.66' LT |
| | 10 STA. 114+13.04; 20.01' LT |
| | 11 STA. 114+00.00; 7.00' LT |
| | 12 STA. 114+00.00; 7.00' RT |
| | 13 STA. 114+85.00; 7.00' RT |

NOTE:
 1. FOR ADDITIONAL RESTORATION NOTES AND QUANTITIES, SEE SHEET 34.



MIA-GREAT MIAMI RIVER TRAIL AND PROFILE - GREAT MIAMI RIVER TRAIL
 RIVER TRAIL BRIDGE STA. 110+00.00 TO STA. 115+00.00
 16/80
 REVISIONS: 1 REVISED 05/20/22
 CALCULATED: JMD
 CHECKED: JRW

O:\City of Piqua\0110902A.01 - Great Miami Pedestrian Bridge\08160\roadway\sheets\08160GPO03.dgn 5/20/2022 12:27:07 PM jmillman

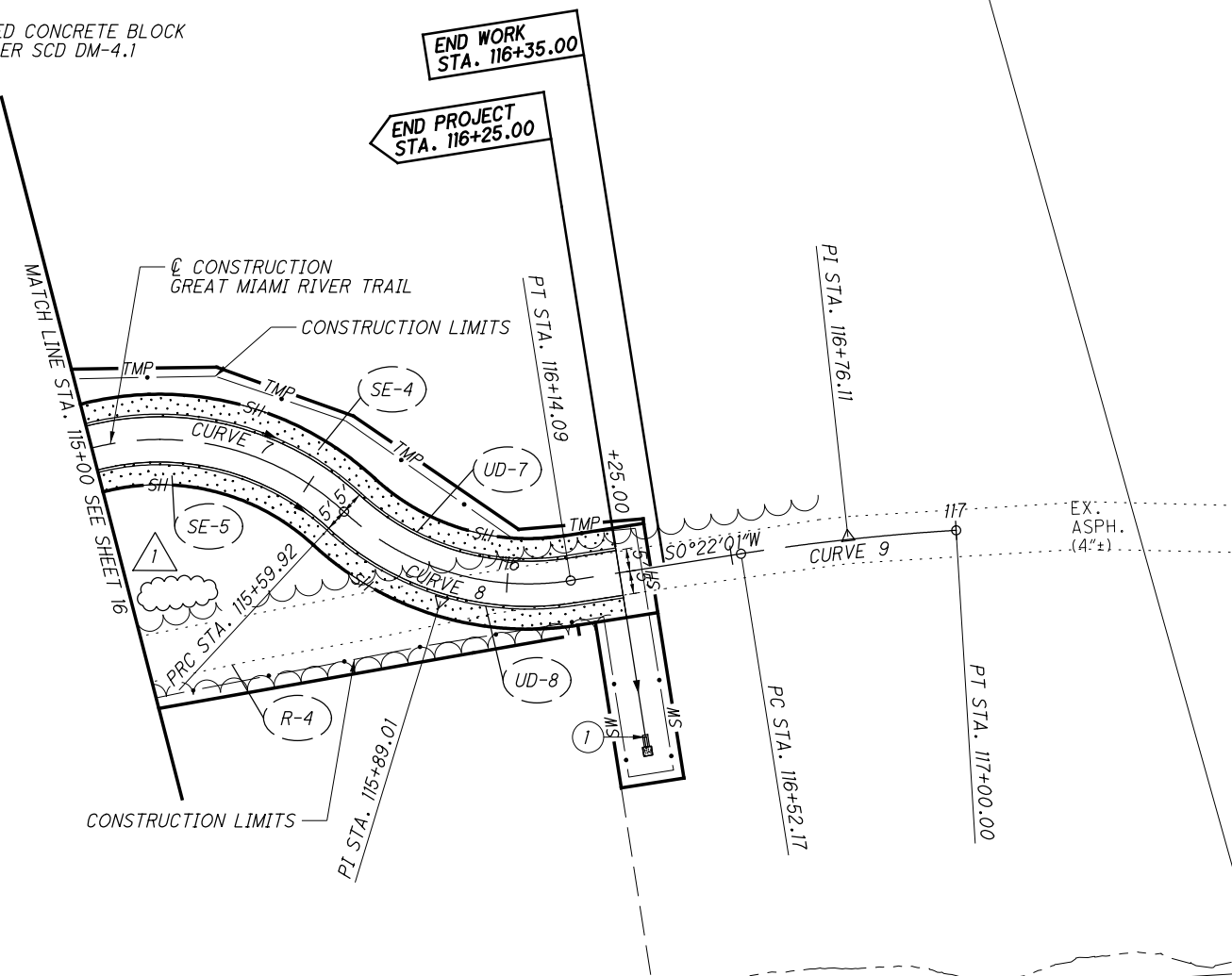
1 PRECAST REINFORCED CONCRETE OUTLET
 STA. 116+25.00; 36.75' RT
 INV. 6" = 864.42

ITEM 601 - TIED CONCRETE BLOCK
 MAT, TYPE 1 PER SCD DM-4.1

CURVE 7
 PI STA. 115+72.35
 $\Delta = 138^\circ 12' 37''$ (RT)
 $D_c = 95^\circ 29' 35''$
 $R = 60.00'$
 $T = 157.17'$
 $L = 144.73'$
 $E = 108.23'$
 $C = 112.11'$
 C.B. = S $17^\circ 00' 35''$ E

CURVE 8
 PI STA. 115+89.01
 $\Delta = 51^\circ 43' 43''$ (LT)
 $D_c = 95^\circ 29' 35''$
 $R = 60.00'$
 $T = 29.09'$
 $L = 54.17'$
 $E = 6.68'$
 $C = 52.35'$
 C.B. = S $26^\circ 13' 52''$ W

CURVE 9
 PI STA. 116+76.11
 $\Delta = 5^\circ 28' 51''$ (RT)
 $D_c = 11^\circ 27' 33''$
 $R = 500.00'$
 $T = 23.93'$
 $L = 47.83'$
 $E = 0.57'$
 $C = 47.81'$
 C.B. = S $3^\circ 06' 26''$ W



LEGEND
 ITEM 670 - SLOPE EROSION PROTECTION

NOTE:
 1. FOR ADDITIONAL RESTORATION NOTES AND QUANTITIES, SEE SHEET 34.



MIA-GREAT MIAMI RIVER TRAIL BRIDGE
 PLAN AND PROFILE - GREAT MIAMI RIVER TRAIL
 STA. 115+00.00 TO STA. 116+25.00
 17/80
 REVISIONS: 05/20/22
 CALCULATED: JMD
 CHECKED: JRW

O:\City of Piqua\010902A.01 - Great Miami Pedestrian Bridge\08160\roadway\sheets\08160GP004.dgn 5/20/2022 12:27:08 PM jimellman

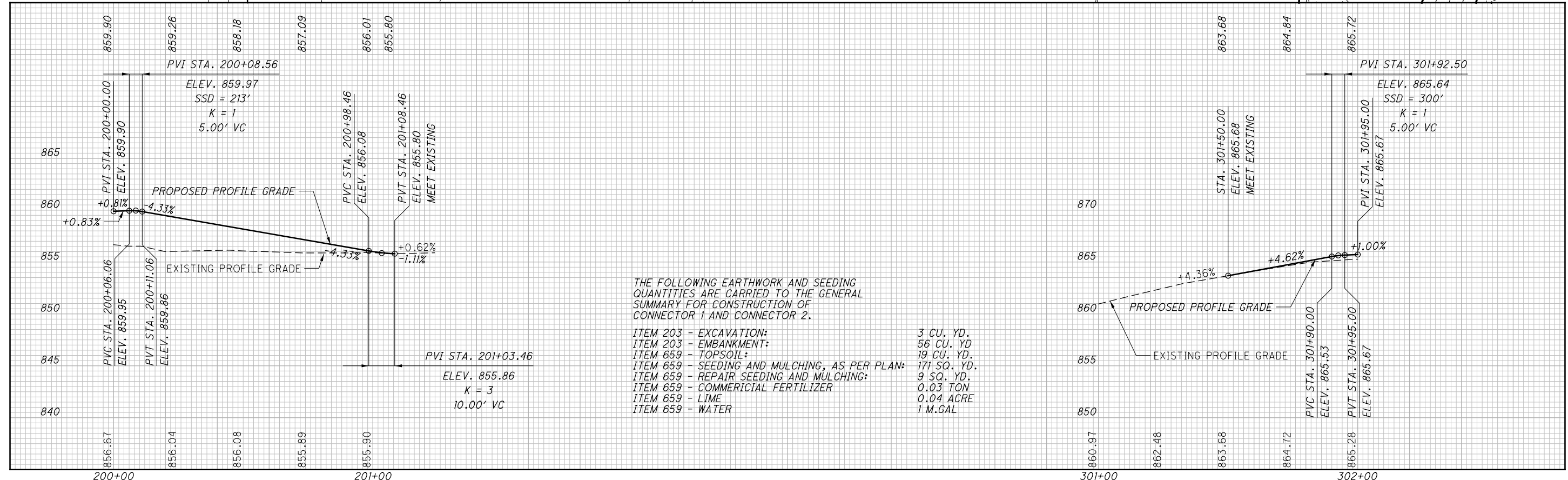
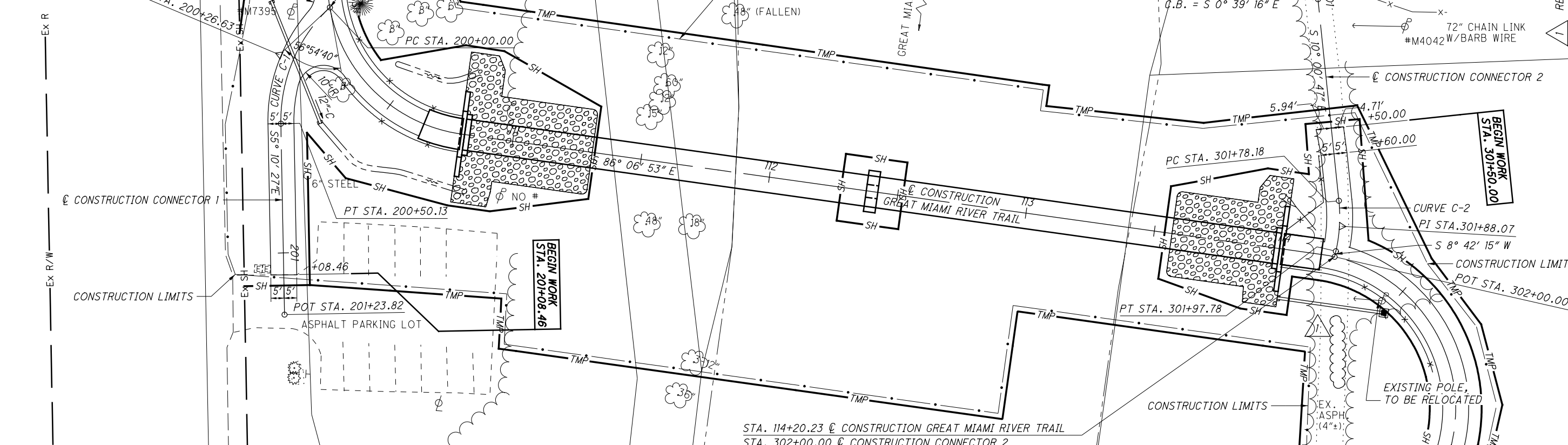
CURVE C-1
 PI STA. 200+26.63
 $\Delta = 47^\circ 52' 00''$ (LT)
 $D_c = 95^\circ 29' 35''$
 $R = 60.00'$
 $T = 26.63'$
 $L = 50.13'$
 $E = 5.64'$
 $C = 48.68'$
 $C.B. = S 18^\circ 45' 34'' W$

CURVE C-2
 PI STA. 301+88.07
 $\Delta = 18^\circ 43' 02''$ (RT)
 $D_c = 95^\circ 29' 35''$
 $R = 60.00'$
 $T = 9.89'$
 $L = 19.60'$
 $E = 0.81'$
 $C = 19.51'$
 $C.B. = S 0^\circ 39' 16'' E$

REVISED 05/20/22

CALCULATED JMD
 CHECKED JRW

0 20 40
 HORIZONTAL SCALE IN FEET



THE FOLLOWING EARTHWORK AND SEEDING QUANTITIES ARE CARRIED TO THE GENERAL SUMMARY FOR CONSTRUCTION OF CONNECTOR 1 AND CONNECTOR 2.

ITEM 203 - EXCAVATION:	3 CU. YD.
ITEM 203 - EMBANKMENT:	56 CU. YD.
ITEM 659 - TOPSOIL:	19 CU. YD.
ITEM 659 - SEEDING AND MULCHING, AS PER PLAN:	171 SQ. YD.
ITEM 659 - REPAIR SEEDING AND MULCHING:	9 SQ. YD.
ITEM 659 - COMMERCIAL FERTILIZER:	0.03 TON
ITEM 659 - LIME:	0.04 ACRE
ITEM 659 - WATER:	1 M.GAL

PLAN AND PROFILE - CONNECTOR 1
PLAN AND PROFILE - CONNECTOR 2

MIA-GREAT MIAMI RIVER TRAIL BRIDGE

o:\City of Piqua\010902A.01 - Great Miami Pedestrian Bridge\08160\roadway\sheets\08160GP005.dgn 5/20/2022 12:27:09 PM jmelman