

STATE OF OHIO
DEPARTMENT OF HIGHWAYS
MRW-95 DA-(0.61-0.67)

FED. RD. DIVISION	STATE	PROJECT	
2	OHIO	STATE	

MORROW COUNTY
MRW.-95DA-(0.61-0.67)

VILLAGE OF MOUNT GILEAD
MORROW COUNTY

ON MICROFILM-
BOX NO.
FILE A-9

CONVENTIONAL SIGNS



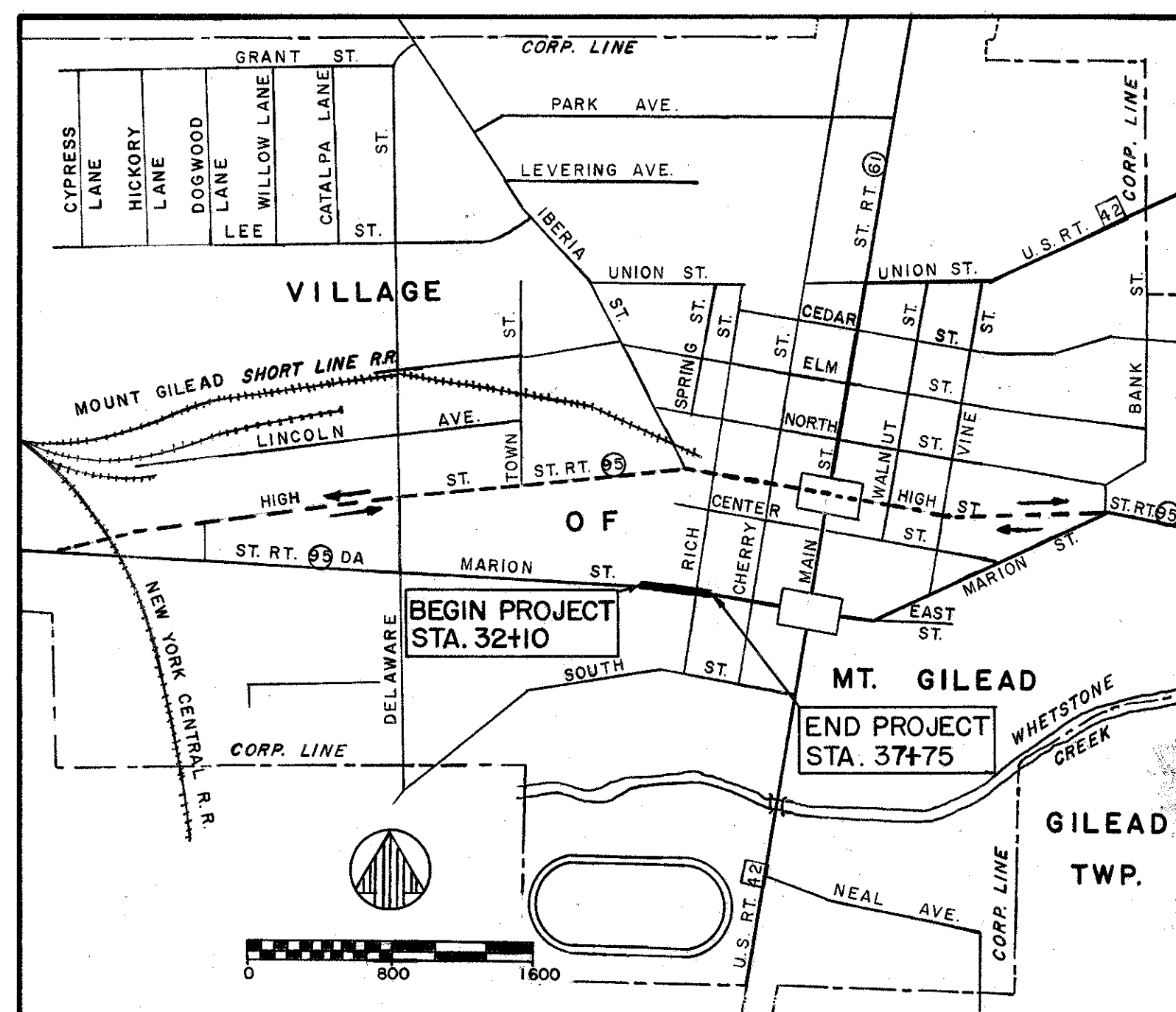
INDEX OF SHEETS

Title Sheet	1
Typical Section	2
General Notes	3
Pavement Computations & General Summary	4
Plan & Profile Sheets	5-6
Cross Section Sheets	7-11
Culvert Details	12
Intersection Details	13
Storm Sewer Details	14
Right-of-Way	15

LINE DATA

BEGIN PROJECT: 32+10.00
END PROJECT: 37+75.00
Net Length of Project = 565.00' or 0.107 Miles

Add for Approaches = 20.00'
Net Length of Work = 585.00' or 0.110 Miles

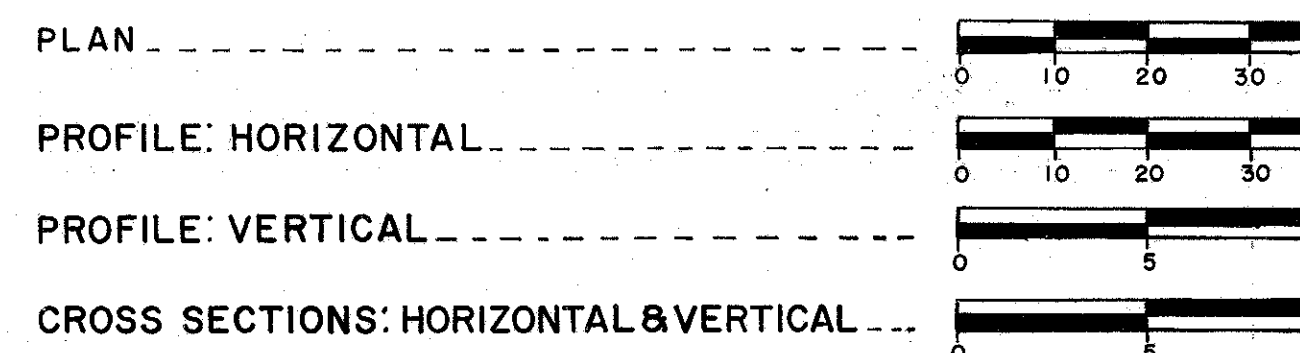


DELIVERY POINT MT. GILEAD
AVERAGE HAUL FROM SIDING 0.60 MILES

LOCATION MAP



SCALES



1963 SPECIFICATIONS

The standard specifications of the State of Ohio, Department of Highways, including changes and supplemental specifications listed in the proposal shall govern this improvement.

The right-of-way for this improvement will be provided by the State of Ohio.

I hereby approve these plans and declare that the making of this improvement will require the closing to traffic of the highway and that detours will be provided, as indicated on the plan.

Approved *[Signature]*
Date ~~11-12-64~~ Division Deputy Director

Approved _____
Date _____ Engineer of Bridges

Approved *[Signature]*
Date ~~12-30-64~~ Engineer of Location & Design

Approved *[Signature]*
Date ~~12-30-64~~ Deputy Director of Design & Construction

Approved *[Signature]*
Date ~~12-23-64~~ Deputy Director of Right-of-Way

Approved *[Signature]*
Date ~~12-31-64~~ Deputy Director of Planning & Programming

Approved *[Signature]*
Date ~~12/31/64~~ First Assistant Director

Approved *[Signature]*
Date ~~12/31/64~~ Director of Highways

Approved *[Signature]*
Date ~~Nov-18-64~~ Mayor, Village of Mount Gilead, Ohio

PLANS PREPARED BY: TOZZER & ASSOCIATES, LTD.
299 CLOVER AVENUE
MARION, OHIO

SUPPLEMENTAL PRINTS OF STANDARD CONSTRUCTION DRAWINGS

SP-53	6-30-61	DR-1	1-3-55
1-8 MH. No. 1	2-1-63	1-15 No. 1	11-15-60
1-8 C.B. No. 3	2-1-63	G-7.07	4-1-64
1-12	2-1-63	T-35	1-2-56
1-15 No. 2-A	8-17-60	L-1	4-1-50
L-3	4-1-50	L-3A	4-1-50
RI-1	9-1-64	I-8 MH No. 1A	8-17-60
I-1	11-15-60		

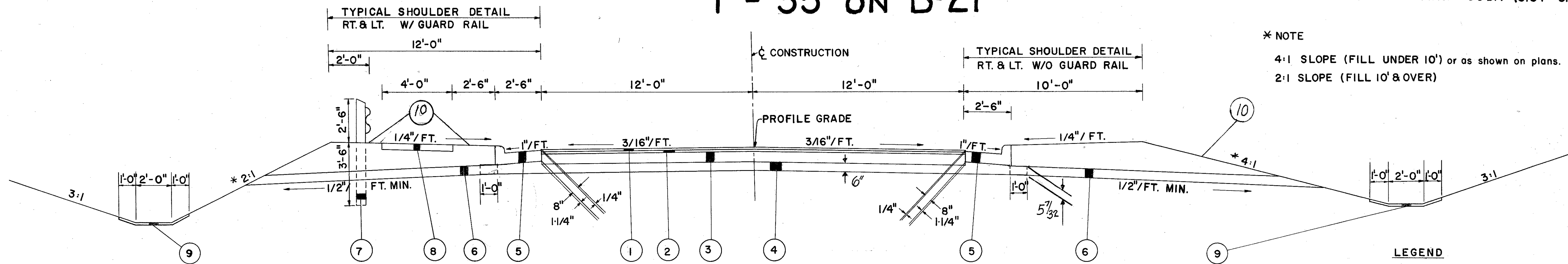
FILE	MORROW COUNTY	MRW-95DA-(0.61-0.67)
No.	DATE OF LETTING:	196
	CONTRACT No.	

TYPICAL SECTIONS

T - 35 ON B-21

FED. RD. DIVISION	STATE	PROJECT	2 15
2	OHIO		

MORROW COUNTY
MRW. -95 DA -(0.61 - 0.67)



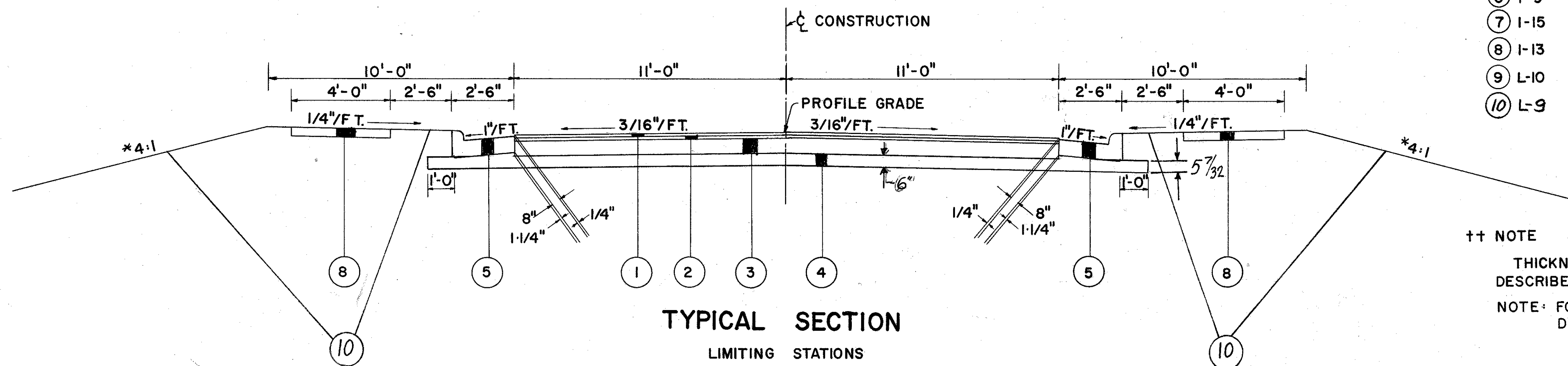
* NOTE
4:1 SLOPE (FILL UNDER 10') or as shown on plans.
2:1 SLOPE (FILL 10' & OVER)

TYPICAL SECTION

LIMITING STATIONS
FROM 32+10 TO 36+08.58 = 398.58 Lin. Ft.
TRANSITION
FROM 36+08.58 TO 36+68.92 = 60.34 Lin. Ft.

LEGEND

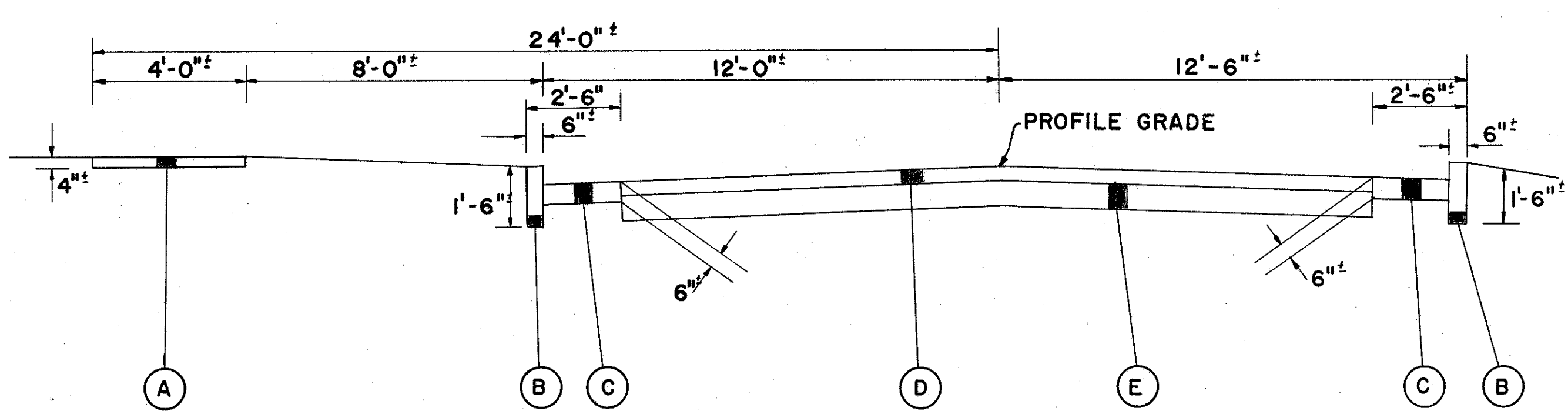
- ++ ① T-35 1" ASPHALTIC CONCRETE SURFACE COURSE TYPE "C" (70-85)
- ++ ② B-35 1 1/2" ASPHALTIC CONCRETE LEVELING COURSE (70-85)
- ++ ③ B-21 7" (2-3 1/2") WATERPROOFED AGGREGATE BASE COURSE
- ④ 1-22 SUBBASE
- ⑤ 1-12 CONCRETE CURB & GUTTER, STANDARD TYPE 2
- ⑥ 1-9 STONE UNDERDRAIN NO. 2
- ⑦ 1-15 GUARD RAIL
- ⑧ 1-13 4" CONCRETE SIDEWALK (as shown on plan)
- ⑨ L-10 SODDING (as shown on plan)
- ⑩ L-9 Seeding and Protecting



TYPICAL SECTION

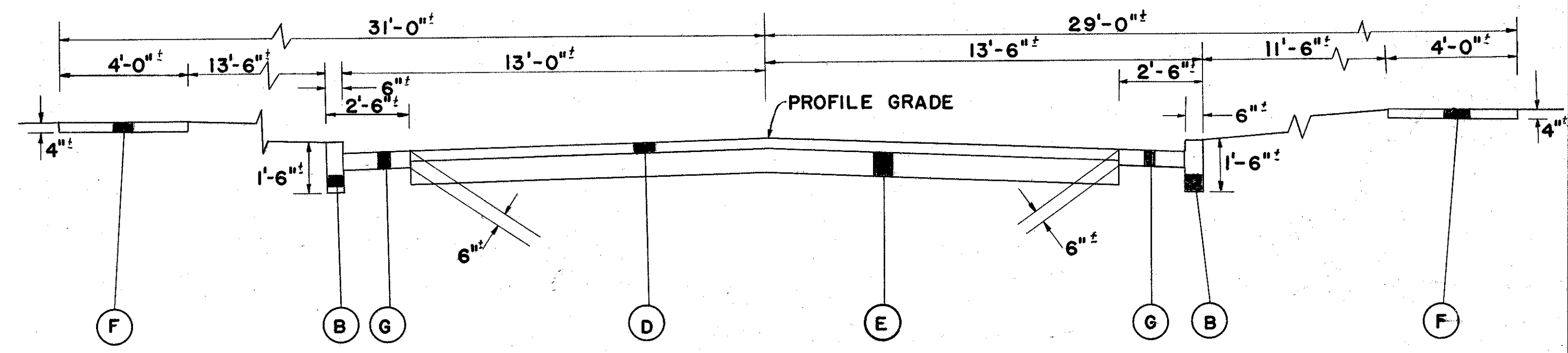
LIMITING STATIONS
FROM 36+68.92 TO 37+75 = 106.08 Lin. Ft.

++ NOTE
THICKNESSES SHOWN ARE DESIGN THICKNESS AS DESCRIBED IN SECTIONS T-35.01, B-35.01, AND B-21.01.
NOTE: FOR DETAILS NOT SHOWN REFER TO STANDARD DRAWING R1-1 & CROSS SECTIONS.



TYPICAL SECTION

ADJOINING PAVEMENT
STA. 32+10



TYPICAL SECTION

ADJOINING PAVEMENT
STA. 37+75

LEGEND

- ① SANDSTONE WALK
- ② SANDSTONE CURB
- ③ SANDSTONE GUTTER
- ④ 4" ASPHALTIC CONCRETE
- ⑤ 8" WATERBOUND MACADAM
- ⑥ CONCRETE WALK
- ⑦ CONCRETE GUTTER

PAVEMENT CALCULATIONS

GENERAL SUMMARY

T-35 ASPHALTIC CONCRETE SURFACE COURSE TYPE 'C' (70-85)

STA. 32+00 TO STA. 36+38.75 = 438.75 LIN. FT.
 WIDTH = 24 FT., DEPTH = 0.0833 FT.
 VOLUME = 438.75 x 24 x 0.0833 ÷ 27 = 32.37 CU. YDS.
 STA. 36+38.75 TO STA. 37+85 = 146.25 LIN. FT.
 WIDTH = 22 FT., DEPTH = 0.0833 FT.
 VOLUME = 146.25 x 22 x 0.0833 ÷ 27 = 9.89 CU. YDS.
 DEDUCT FOR FEATHERING = -0.71 CU. YDS.
 ADD FOR INTERSECTION = 12.77 CU. YDS.
 TOTAL = 54.32 CU. YDS.

TO SUMMARY USE 54 CU. YDS.

B-35 ASPHALTIC CONCRETE LEVELING COURSE (70-85)

STA. 32+10 TO STA. 36+38.75 = 428.75 LIN. FT.
 WIDTH = 24 FT., DEPTH = 0.125 FT.
 VOLUME = 428.75 x 24 x 0.125 ÷ 27 = 47.64 CU. YDS.
 STA. 36+38.75 TO STA. 37+75 = 136.25 LIN. FT.
 WIDTH = 22 FT., DEPTH = 0.125 FT.
 VOLUME = 136.25 x 22 x 0.125 ÷ 27 = 13.88 CU. YDS.
 ADD FOR INTERSECTION = 5.66 CU. YDS.
 TOTAL = 67.18 CU. YDS.

TO SUMMARY USE 67 CU. YDS.

B-21 WATERPROOFED AGGREGATE BASE COURSE

STA. 32+10 TO STA. 36+38.75 = 428.75 LIN. FT.
 WIDTH = 24 FT., DEPTH = 0.5833 FT.
 VOLUME = 428.75 x 24 x 0.5833 ÷ 27 = 222.30 CU. YDS.
 STA. 36+38.75 TO STA. 37+75 = 136.25 LIN. FT.
 WIDTH = 22 FT., DEPTH = 0.5833 FT.
 VOLUME = 136.25 x 22 x 0.5833 ÷ 27 = 64.76 CU. YDS.
 ADD FOR INTERSECTION = 19.74 CU. YDS.
 TOTAL = 306.80 CU. YDS.

TO SUMMARY USE 307 CU. YDS.

I-22 SUBBASE

STA. 32+10 TO STA. 36+38.75 = 428.75 LIN. FT.
 WIDTH = 31 FT., DEPTH = 0.5 FT.
 VOLUME = 428.75 x 31 x 0.5 ÷ 27 = 246.13 CU. YDS.
 STA. 36+38.75 TO STA. 37+75 = 136.25 LIN. FT.
 WIDTH = 29 FT., DEPTH = 0.5 FT.
 VOLUME = 136.25 x 29 x 0.5 ÷ 27 = 73.17 CU. YDS.
 ADD FOR INTERSECTION = 35.34 CU. YDS.
 TOTAL = 354.64 CU. YDS.

TO SUMMARY USE 355 CU. YDS.

E-1 COMPACTED SUBGRADE

STA. 32+10 TO STA. 36+38.75 = 428.75 LIN. FT.
 WIDTH = 29 FT., AREA = 428.75 x 29 ÷ 9 = 1381.53 SQ. YDS.
 STA. 36+38.75 TO STA. 37+75 = 136.25 LIN. FT.
 WIDTH = 27 FT., AREA = 136.25 x 27 ÷ 9 = 408.75 SQ. YDS.
 ADD FOR INTERSECTION = 247.24 SQ. YDS.
 TOTAL = 2037.52 SQ. YDS.

TO SUMMARY USE 2038 SQ. YDS.

I-9 STONE UNDERDRAINS No. 2

(LT.) STA. 32+71 TO STA. 35+50 = 279 LIN. FT.
 (RT.) STA. 32+00 TO STA. 35+50 = 350 LIN. FT.
 TOTAL = 629 LIN. FT.
 No. OF I-9's = 1 x 629 ÷ 50 = 12
 AVG. LENGTH PER I-9 = 18 FT.
 TOTAL LENGTH = 18 x 12 = 216 LIN. FT.

TO SUMMARY USE 216 LIN. FT.

E-11 WATER

TOTAL I-22 = 355 CU. YDS.
 TOTAL EMBANKMENT = 4228 CU. YDS.
 TOTAL = 4583 CU. YDS.
 WATER REQUIRED = 4583 x 5 GAL. PER CU. YD. ÷ 1000 = 22.92 M. GAL.

TO SUMMARY USE 23 M. GAL.

L-9 COMMERCIAL FERTILIZER

TOTAL SEEDING AND SODDING = 3856 SQ. YDS.
 RATE OF APPLICATION = 20 LBS. PER 1000 SQ. FT.
 FERTILIZER REQUIRED = 3856 x 9 x 20 ÷ (1000 x 2000) = 0.347 TONS

TO SUMMARY USE 0.35 TONS

EARTHWORK AND SEEDING

EMBANKMENT = 4228 CU. YDS.
 EXCAVATION = 675 CU. YDS.
 SEEDING = 3639 SQ. YDS.

ITEM	SHEET NO.					TOTAL QUANT.	UNIT	PARTICIPATION		DESCRIPTION
	3	4	5	6	12			NORM	100% VILL.	
ROADWAY:										
E-1	2038					2038	Sq. Yds.	2038		COMPACTED SUBGRADE
E-1	675					675	Cu. Yds.	675		ROADWAY EXCAVATION METHOD "A"
E-1	4228					4228	Cu. Yds.	4228		EMBANKMENT METHOD "A"
E-8			1156	920		2076	Sq. Ft.	2076		REMOVAL AND DISPOSAL OF EXISTING SIDEWALK
E-8			300	586		886	Lin. Ft.	886		REMOVAL AND DISPOSAL OF EXISTING CURB & GUTTER
E-9		Lump				Lump	Lump	Lump		REMOVAL OF TREES AND STUMPS
I-4		5				5	M. Gal.	5		WATER FOR DUST CONTROL
E-11	23					23	M. Gal.	23		WATER
I-4		6				6	Ton	6		CALCIUM CHLORIDE FOR DUST CONTROL
I-13			1200	920		2120	Sq. Ft.	2120		4" CONCRETE SIDEWALK
I-15			500	25		525	Lin. Ft.	525		GUARD RAIL, STEEL BEAM STANDARD TYPE (DEEP)
L-9	3639					3639	Sq. Yds.	3639		SEEDING AND PROTECTING as per plan.
L-9	0.35					0.35	Ton	0.35		COMMERCIAL FERTILIZER (12-12-12)
L-10			195	22		217	Sq. Yds.	217		SODDING
S-24		Lump				Lump	Lump	Lump		REMOVAL OF EXISTING STRUCTURES
E-10		Lump				Lump	Lump	Lump		REMOVAL OF ONE FRAME SHED, PARCEL NO. 2 & 2T
E-10		Lump				Lump	Lump	Lump		REMOVAL OF ONE FRAME BARN, PARCEL NO. 3
DRAINAGE:										
E-3					14	14	Cu. Yds.	14		CHANNEL EXCAVATION
E-12			65	95		160	Lin. Ft.	160		PIPE REMOVED OVER 15"
I-1			28	115		143	Lin. Ft.	143		12" PIPE CLASS B-1
I-1				21		21	Lin. Ft.	21		15" PIPE CLASS B-1
I-1				168		168	Lin. Ft.	168		18" PIPE CLASS B-1
I-1			95			95	Lin. Ft.	95		18" PIPE CLASS E-1
I-1					109	109	Lin. Ft.	109		66" PIPE CLASS A-1 10 GAGE, Sec. M-6.4 (d)
I-2					11	11	Cu. Yds.	11		MASONRY
I-1			6			6	Lin. Ft.	6		10" PIPE CLASS E-1 Sec. M-6.8 (a) (Sanitary) With compression joints
I-8			1	2		3	Ea.	3		STANDARD NO. 1 MANHOLE
I-8			2	6		8	Ea.	8		CATCH BASIN, STANDARD NO. 3
I-8			1			1	Ea.	1		STANDARD NO. 1 MANHOLE (Sanitary)
I-8			1			1	Ea.	1		MANHOLE RECONSTRUCTED TO GRADE (Sanitary)
I-9	216					216	Lin. Ft.	216		STONE UNDERDRAINS NO. 2
I-10					13	13	Cu. Yds.	13		DUMPED ROCK CHANNEL PROTECTION
I-16			2	7		9	Ea.	9		CATCH BASINS, ABANDONED
I-10					7	7	Sq. Yds.	7		RIPRAP USING 6" REINFORCED CONCRETE SLAB, AS PER PLAN
PAVEMENT:										
B-21	307					307	Cu. Yds.	307		WATERPROOFED AGGREGATE BASE COURSE
B-35	67					67	Cu. Yds.	67		ASPHALTIC CONCRETE LEVELING COURSE (70-85)
I-22	355					355	Cu. Yds.	355		SUBBASE
T-35	54					54	Cu. Yds.	54		ASPHALTIC CONCRETE SURFACE COURSE TYPE "C" (70-85)
T-70			4			4	Cu. Yds.	4		PORTLAND CEMENT CONCRETE PAVEMENT
I-12			600	589		1189	Lin. Ft.	1189		STANDARD TYPE 2 CONCRETE CURB AND GUTTER
I-3						Lump	Lump	Lump		MAINTAINING TRAFFIC

GENERAL NOTES

DESIGN SPEED

THE GEOMETRICS FOR THIS PROJECT HAVE BEEN PLANNED FOR A DESIGN SPEED OF 35 MILES PER HOUR

ELEVATION DATUM

ALL ELEVATIONS ARE BASED ON U. S. G. S. DATUM

FIELD OFFICE

THE CONTRACTOR SHALL, IN ACCORDANCE WITH SEC. S-0.01 (b), PROVIDE FOR THE EXCLUSIVE USE OF THE STATE'S EMPLOYEES, A SUITABLE FIELD OFFICE HAVING A MINIMUM OF 150 SQ. FT. OF FLOOR SPACE. THE CONTRACTOR SHALL HAVE A TELEPHONE INSTALLED AND MAINTAINED IN THIS FIELD OFFICE DURING THE CONSTRUCTION OF THIS PROJECT. THE CONTRACTOR SHALL ALSO PROVIDE AND INSTALL WIRING AND OUTLETS SUITABLE FOR CONNECTING ELECTRIC LIGHTS AND OFFICE EQUIPMENT IN THE FIELD OFFICE AND PROVIDE 110-VOLT ALTERNATING CURRENT TO THE OFFICE DURING THE ENTIRE PERIOD OF CONSTRUCTION OF THIS PROJECT.

UTILITY ADJUSTMENT

ANY OR ALL WORK REQUIRED FOR PUBLIC OR PRIVATE UTILITIES WILL BE DONE BY AND AT THE EXPENSE OF THEIR RESPECTIVE OWNERS, UNLESS OTHERWISE NOTED ON THESE PLANS.

REMOVALS

ALL ITEMS MARKED FOR REMOVAL AND DISPOSAL SHALL BECOME THE PROPERTY OF THE CONTRACTOR AND BE DISPOSED OF BY HIM UNLESS OTHERWISE SPECIFIED ON THE DETAIL PLANS.

ROUNDING OF CORNERS SHOWN ON CROSS SECTIONS

THE ROUNDED CORNERS SHOWN ON STANDARD DRAWING R-1, APPLY TO ALL CROSS SECTIONS, EVEN THOUGH OTHERWISE SHOWN ON THESE PLANS.

NON RIGID PAVEMENT REMOVAL

REMOVAL AND DISPOSAL OF EXISTING NON-RIGID PAVEMENT SHALL BE MEASURED AND PAID FOR AS ITEM E-1, ROADWAY EXCAVATION.

DRAINAGE OF BASE MATERIAL

WHERE THE BASE MATERIAL IS DRAINED BY I-9 STONE UNDERDRAINS OR BY EXTENSIONS OF THE SUBBASE THROUGH THE SHOULDERS TO THE FILL SLOPE OR THE DITCH LINE, THE CONTRACTOR SHALL FINISH, SEED, AND MULCH THE SLOPES SO AS NOT TO IMPEDE DRAINAGE OF THE BASE MATERIAL.

REMOVAL OF TREES AND STUMPS

ALL TREES AND STUMPS LYING WITHIN THE CONSTRUCTION LIMITS OF THIS PROJECT SHALL BE REMOVED UNDER THE LUMP SUM PRICE BID FOR ITEM E-9, REMOVAL OF TREES AND STUMPS, EXCEPT THAT THOSE TREES FOR WHICH PROTECTION AND PRESERVATION WORK IS INDICATED ELSEWHERE IN THESE PLANS SHALL NOT BE REMOVED.

THE FOLLOWING IS AN APPROXIMATE ESTIMATE OF THE NUMBER OF TREES AND STUMPS TO BE REMOVED.

SIZE	NO. TREES	NO. STUMPS
12" - 18" =	26	1
18" - 24" =	1	3
24" - 30" =	1	2
30" - 36" =	0	2

THE ABOVE ESTIMATE IS APPROXIMATE AND THE STATE OF OHIO RESERVES THE RIGHT TO ORDER THE REMOVAL OF ADDITIONAL TREES OR STUMPS OUTSIDE OF THE LIMITS OF CONSTRUCTION BUT WITHIN THE RIGHT OF WAY/OR EASEMENT LINES. PAYMENT FOR THE REMOVAL OF THESE ADDITIONAL TREES OR STUMPS SHALL BE INCLUDED IN THE LUMP SUM PRICE BID FOR ITEM E-9, REMOVAL OF TREES AND STUMPS.

SPECIAL SEEDING PREPARATION AREAS

THE REFERENCES IN THE FIRST PARAGRAPH OF SEC. L-9.11 TO PREPARATION OF THE SEED BED IN FRONT OF RESIDENCES, ETC., SHALL, ON THIS PROJECT, BE CONSIDERED TO BE PARTICULARLY APPLICABLE IN THE FOLLOWING AREAS:

STATION 32+00	TO 32+70	Lt.
STATION 35+00	TO 36+25	Lt.
STATION 35+25	TO 36+25	Rt.
STATION 36+50	TO 37+75	Lt.
STATION 36+50	TO 37+75	Rt.

SEEDING FORMULA

THE FOLLOWING SEED MIXTURE SHALL, IN LIEU OF THE MIXTURES LISTED IN SECTION L-9.11, BE USED THROUGHOUT THE LIMITS OF THIS PROJECT: 40% KENTUCKY BLUE GRASS; 45% CHEWING FESCUE, AND 5% RED TOP, 10% WHITE DUTCH CLOVER, APPLIED AT THE RATE OF 3 LBS. PER 1000 SQ. FT. OF AREA.

MANHOLE RECONSTRUCTED TO GRADE, AS PER PLAN

THIS ITEM SHALL CONSIST OF THE CAREFUL REMOVAL OF THE EXISTING MANHOLE DOWN TO THE SPRING LINE AND RECONSTRUCTION OF THE MANHOLE TO THE NEW GRADE, CONFORMING AS NEARLY AS PRACTICABLE TO THE EXISTING DIMENSIONS AND TYPE OF CONSTRUCTION AND USING THE SALVAGED MANHOLE FRAME AND COVER.

CONNECTIONS TO EXISTING PIPE

AT PLACES WHERE THE PLANS PROVIDE FOR PROPOSED DRAINAGE PIPE TO BE CONNECTED TO EXISTING PIPES, IT SHALL BE THE RESPONSIBILITY OF THE CONTRACTOR TO LOCATE THE EXISTING PIPE BOTH AS TO LINE AND GRADE BEFORE HE STARTS TO LAY THE PROPOSED PIPE. THE COST OF THIS OPERATION SHALL BE INCLUDED IN THE UNIT PRICE BID FOR THE PERTINENT PIPE ITEM.

STONE UNDERDRAINS, NO. 2

STONE UNDERDRAINS SHALL BE PLACED AT FIFTY (50) FOOT INTERVALS ON EACH SIDE OF NORMAL CROWNED SECTIONS.

PLUGGING PIPE

THE UPSTREAM ENDS OF ALL PIPE OR TILE LINES INTERCEPTED BY EARTHWORK OPERATIONS (AND, WHERE INDICATED, THE ENDS OF PIPE LINES TO BE ABANDONED IN PLACE) SHALL BE EFFECTIVELY BLOCKED AND COVERED. BROKEN PIECES AND PORTIONS OF PIPE OR TILE SHALL BE REMOVED UNTIL A WHOLE UNDAMAGED LENGTH IS ENCOUNTERED. THIS PIPE SHALL THEN BE BLOCKED WITH CONCRETE, FLAT STONE OR BRICK LAID IN MORTAR, OR A PRECAST CLAY OR CONCRETE STOPPER. PAYMENT FOR THE ABOVE WORK SHALL BE INCLUDED IN THE UNIT PRICE BID FOR ITEM E-1, ROADWAY EXCAVATION.

MAINTENANCE OF SEWER FLOWS

THE CONTRACTOR SHALL CONDUCT HIS OPERATIONS SO AS TO MAINTAIN AT ALL TIMES SEWER FLOWS THROUGH EXISTING FACILITIES TO REMAIN IN PLACE AND THROUGH EXISTING FACILITIES TO BE REPLACED UNTIL NEW FACILITIES ARE COMPLETED AND PLACED INTO USE.

PAYMENT FOR ANY ADDITIONAL COSTS INVOLVED IN MAINTAINING THESE FLOWS BY PUMPING OR BY ANY OTHER MEANS APPROVED BY THE ENGINEER SHALL BE INCLUDED IN THE UNIT PRICES BID FOR THE RESPECTIVE PIPE ITEMS.

STREET AND ROAD SIGNS

VILLAGE OWNED STREET AND ROAD SIGNS WILL BE RELOCATED BY THE VILLAGE. THE CONTRACTOR SHALL NOTIFY THE VILLAGE AT LEAST 48 HOURS PRIOR TO BEGINNING WORK IN AREAS WHERE VILLAGE STREET AND ROAD SIGNS EXIST.

UNDERGROUND UTILITIES

THE STATE OF OHIO WILL NOT BE RESPONSIBLE FOR THE ACCURACY OF THE UNDERGROUND UTILITIES SHOWN ON THE PLANS. THEY ARE SHOWN AS NEARLY CORRECT AS THE AVAILABLE INFORMATION PERMITS. THE EXACT DEPTH AND LOCATION OF THE UNDERGROUND UTILITIES WHERE PROPOSED STRUCTURES AND STORM SEWERS ARE TO BE PLACED, SHALL BE DETERMINED BY THE CONTRACTOR PRIOR TO THE INSTALLATION OF SUCH ITEMS. ADJUSTMENT OF FLOW LINES OF PROPOSED CATCH BASINS, MANHOLES AND STORM SEWERS MAY BE MADE WITH THE APPROVAL OF THE ENGINEER. PAYMENT FOR EXTRA OPERATIONS INVOLVED IN LOCATING EXISTING UTILITIES IS INCLUDED IN THE UNIT PRICE BID FOR THE PERTINENT PIPE ITEM.

UTILITIES

THE CONTRACTOR SHALL NOTIFY AT LEAST 48 HOURS BEFORE BREAKING GROUND, ALL PUBLIC SERVICE CORPORATIONS HAVING WIRE, POLES, CONDUITS, MANHOLES, PIPE OR OTHER STRUCTURES THAT MAY BE AFFECTED BY THIS OPERATION, INCLUDING ALL STRUCTURES WHICH ARE AFFECTED AND NOT SHOWN ON THESE PLANS. ANY AND ALL WORK REQUIRED FOR PUBLIC OR PRIVATE UTILITIES, INCLUDING ADJUSTMENT OR RELOCATION OF VALVES AND METERS, WILL BE DONE BY AND AT THE EXPENSE OF THEIR RESPECTIVE OWNERS, UNLESS OTHERWISE NOTED ON THESE PLANS.

SEEDING

QUANTITIES FOR SEEDING ARE CALCULATED FOR THE SOIL AREAS BETWEEN THE WORK LIMITS, AS SHOWN ON THE CROSS SECTIONS.

HOUSEWALKS REPLACEMENT

THE EXISTING SMALL SLABS OF HOUSEWALKS THAT ARE REMOVED BECAUSE OF CURB REPLACEMENT OR MAIN SIDEWALK REPLACEMENT, SHALL BE REPLACED IN ACCORDANCE WITH ITEM I-13, SIDEWALKS, AS DIRECTED BY THE ENGINEER. THE QUANTITIES FOR HOUSEWALK REPLACEMENT HAVE BEEN CALCULATED AND HAVE BEEN INCLUDED IN THE GENERAL SUMMARY.

COMMERCIAL FERTILIZER

ALL AREAS TO BE SEEDED OR SODDED UNDER ITEM L-9, SHALL HAVE COMMERCIAL FERTILIZER (12-12-12) APPLIED AT THE RATE OF TWENTY (20) POUNDS PER 1000 SQ. FT.

DUST CONTROL

A QUANTITY OF CALCIUM CHLORIDE AND WATER IS PROVIDED FOR DUST CONTROL, AS DIRECTED BY THE ENGINEER: I-4 CALCIUM CHLORIDE - I-4, WATER

6 Ton 5 M. Gal.

UTILITY OWNERS:

GAS LINES	OHIO FUEL COMPANY 16 S. MAIN ST. MT. GILEAD, OHIO
POWER LINES	OHIO EDISON COMPANY 15 W. HIGH ST. MT. GILEAD, OHIO
TELEPHONE LINES	OHIO CENTRAL TELEPHONE CORP. 33 E. CENTER ST. MT. GILEAD, OHIO
WATER LINES	MT. GILEAD WATER DEPT. MUNICIPAL BUILDING MT. GILEAD, OHIO
OIL LINES	DYNAMIC OIL COMPANY PETROLEUM BUILDING MT. GILEAD, OHIO BARRON OIL COMPANY P.O. BOX 1023 MARION, OHIO

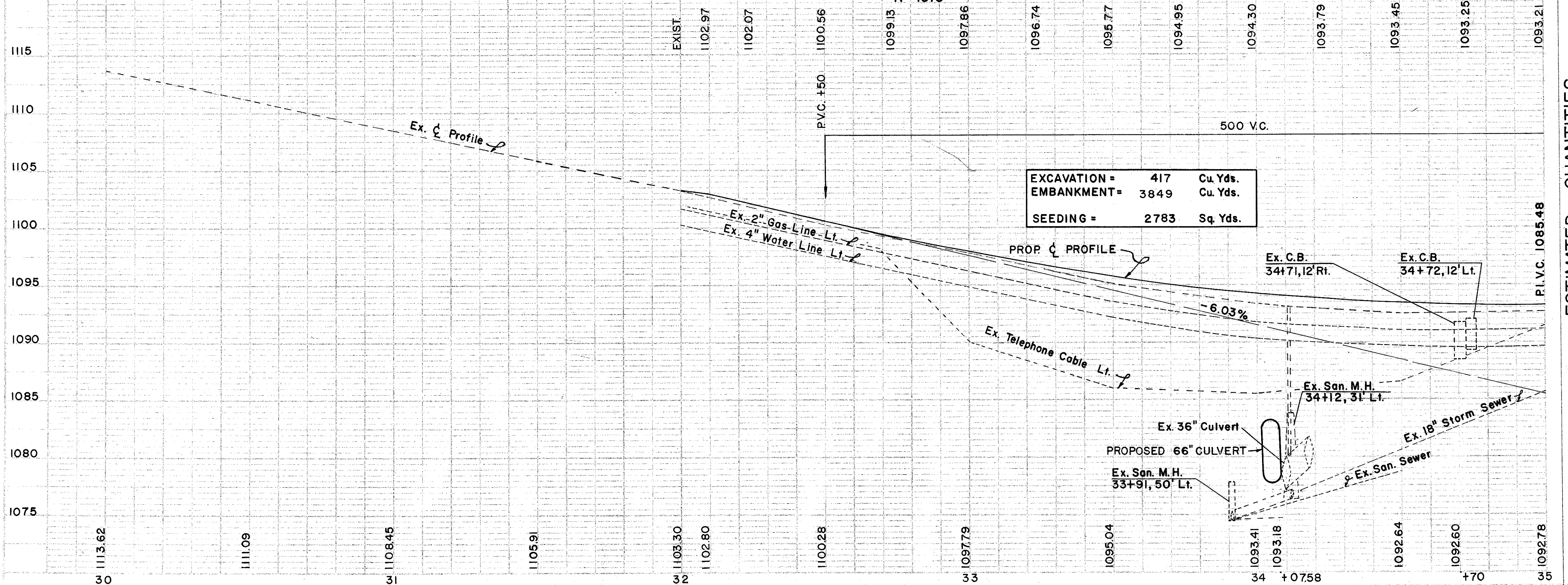
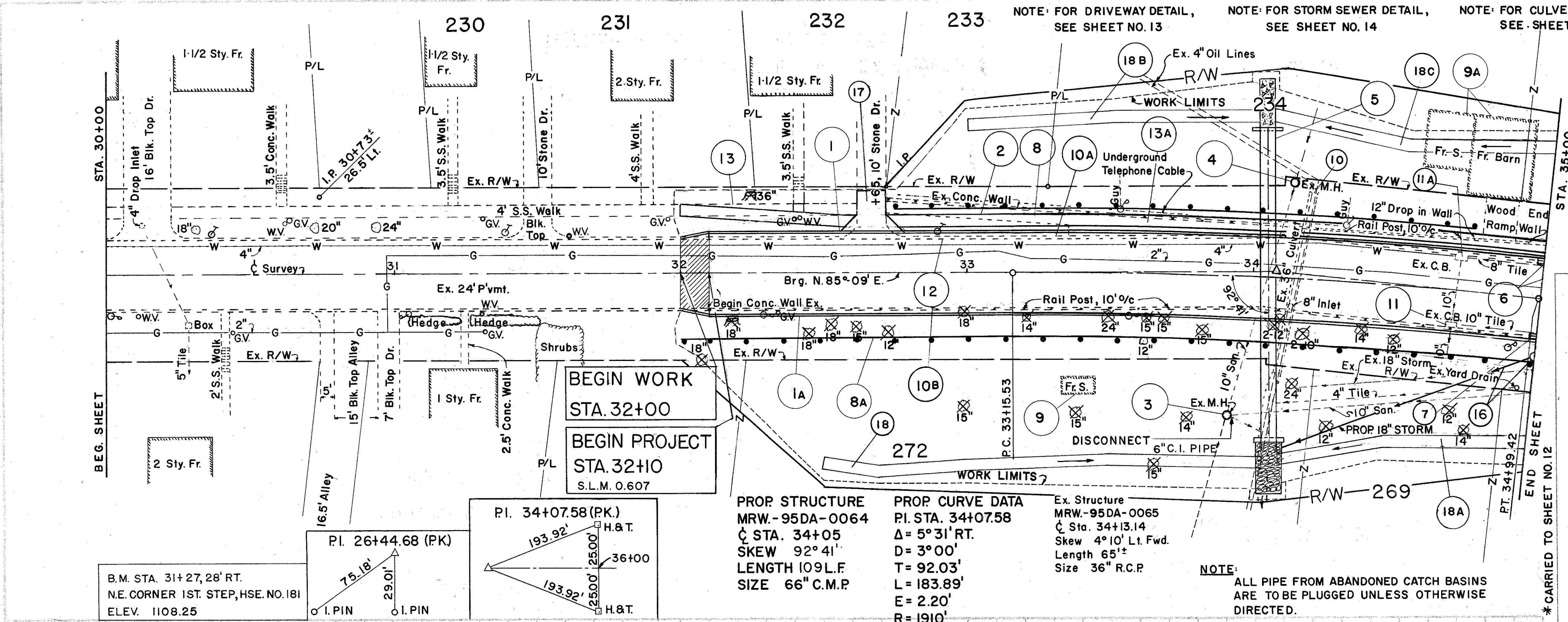
SANITARY FLOW INTO HIGHWAY DRAINAGE SYSTEMS

THIS PLAN MAKES NO PROVISION FOR CONNECTING, NOR SHALL THE ENGINEER OR CONTRACTOR CONNECT, ANY EXISTING OR NEW DRAINAGE INTO THE HIGHWAY DRAINAGE SYSTEM WHEN SUCH DRAINS CARRY FLOW FROM ANY PLUMBING FIXTURES, INCLUDING FLOOR DRAINS AND SINK DRAINS OR DRAINS FROM LIVESTOCK LOTS OR BARNY OR POLLUTED WATER OF ANY KIND.

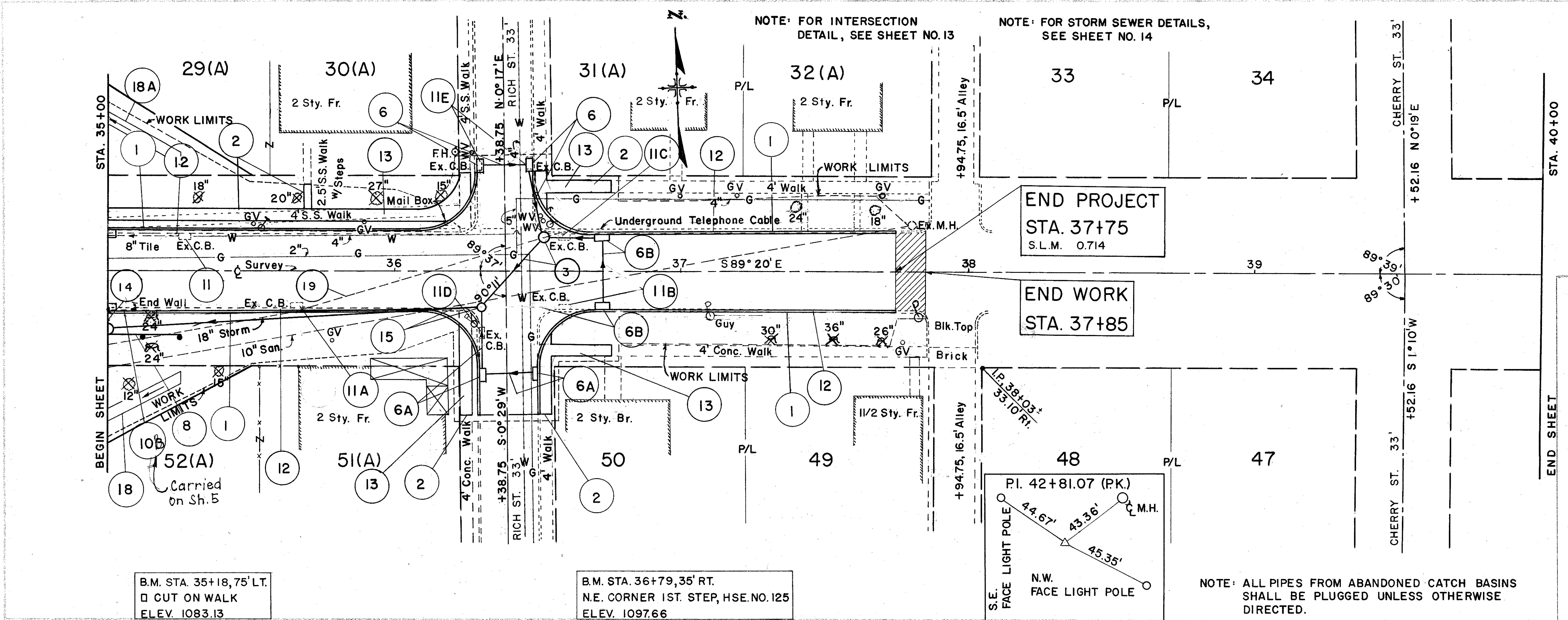
EXISTING PIPE CARRYING FLOW WHICH COMES WITHIN THE CATEGORY OUTLINED ABOVE, SHALL BE PLUGGED WITH CLASS "E" CONCRETE AT THE RIGHT-OF-WAY LINE. PAYMENT FOR SAID PLUGGING SHALL BE INCLUDED IN THE UNIT PRICE BID FOR "ITEM E-1, ROADWAY EXCAVATION."

MORROW COUNTY
MRW-95DA-(0.61-0.67)

REF. NO.	STATION TO STATION	SIDE	LINEAL FEET	CONDUITS
18	32+50 TO 34+02	RT.	68	68
18A	34+08 TO 35+00	RT.	41	41
18B	33+00 TO 34+02	LT.	45	45
18C	34+08 TO 35+00	LT.	41	41
TOTALS			195	195

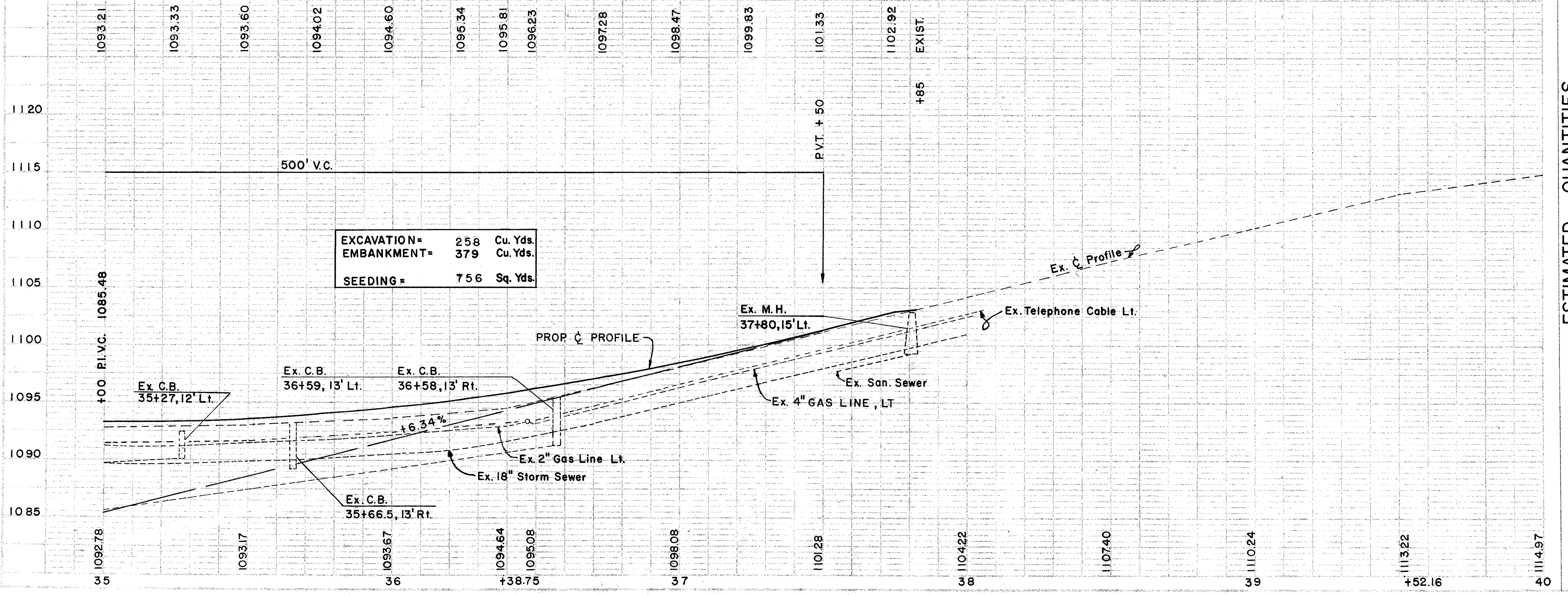


ITEM	QUANTITY	UNIT	ESTIMATED QUANTITIES
E-10 REMOVAL OF B'LDGS.		LUMP	
S-24 REMOVAL EX. STR.		LUMP	
I-15 GUARD RAIL	200	LF	200
I-12 CURB & GUTTER	300	LF	300
I-13 SIDE WALK	1200	LF	1200
E-8 CURB & GUTTER SIDE WALK	240	LF	240
E-12 PIPE REMOVAL OVER 15"	65	LF	65
I-1 10" PIPE	6	LF	6
I-16 DRIVE		EA.	4
I-8 C.B. ABAND. M.H. RECONST. TO GRADE		EA.	2
I-1 STD. NO. 3 C.B. CLASS A-1	109	LF	109
I-1 18" CLASS F-1		LF	28
I-1 12" CLASS B-1		LF	95
TOTALS			



B.M. STA. 35+18, 75' LT.
□ CUT ON WALK
ELEV. 1083.13

B.M. STA. 36+79, 35' RT.
N.E. CORNER 1ST. STEP, HSE. NO. 125
ELEV. 1097.66



EXCAVATION = 258 Cu. Yds.
EMBANKMENT = 379 Cu. Yds.
SEEDING = 756 Sq. Yds.

ESTIMATED QUANTITIES

REF. NO.	STATION TO STATION	SIDE	CLASS	EA.	EA.	EA.	EA.	EA.	EA.	TOTALS
1	35+00 TO 37+75	LT/RT	18" CLASS B-1							
2	35+00 TO 36+75	LT/RT	15" CLASS B-1							
6	10+37 (RICH ST.)	LT/RT	18" CLASS B-1	2						
6A	9+64 (RICH ST.)	LT/RT	18" CLASS B-1	2						
6B	36+73	LT/RT	18" CLASS B-1	2						
8	35+00 TO 36+25	RT	18" CLASS B-1							
11	35+27	LT	18" CLASS B-1							
11A	35+66.5	RT	18" CLASS B-1							
11B	36+58	RT	18" CLASS B-1							
11C	36+59	LT	18" CLASS B-1							
11D	9+78 (RICH ST)	LT	18" CLASS B-1							
11E	10+38 (RICH ST)	LT	18" CLASS B-1							
12	35+00 TO 37+75	LT/RT	15" CLASS B-1							
13	35+00 TO 36+75	LT/RT	12" CLASS B-1							
14	35+00	RT	12" CLASS B-1							
15	36+30	RT	12" CLASS B-1							
18	35+00 TO 35+25	RT	12" CLASS B-1							
18A	35+00 TO 35+25	LT	12" CLASS B-1							
3	36+30 TO 36+52	L&R	12" CLASS B-1							
19	35+66 TO 36+52	L&R	12" CLASS B-1							
I-1			15" CLASS B-1							21
I-8			STD. NO. 3 C.B.							6
I-8			STD. NO. 1 M.H.							2
I-16			C.B. ABAND.							7
L-10			SODDING							22
I-15			GUARD RAIL							25
I-12			CURB							589
I-13			SIDE WALK							920
E-8			GUTTER							586
I-12			CURB							920
I-12			SIDE WALK							920
I-12			PIPE REMO. OVER 15'							9.5
										95

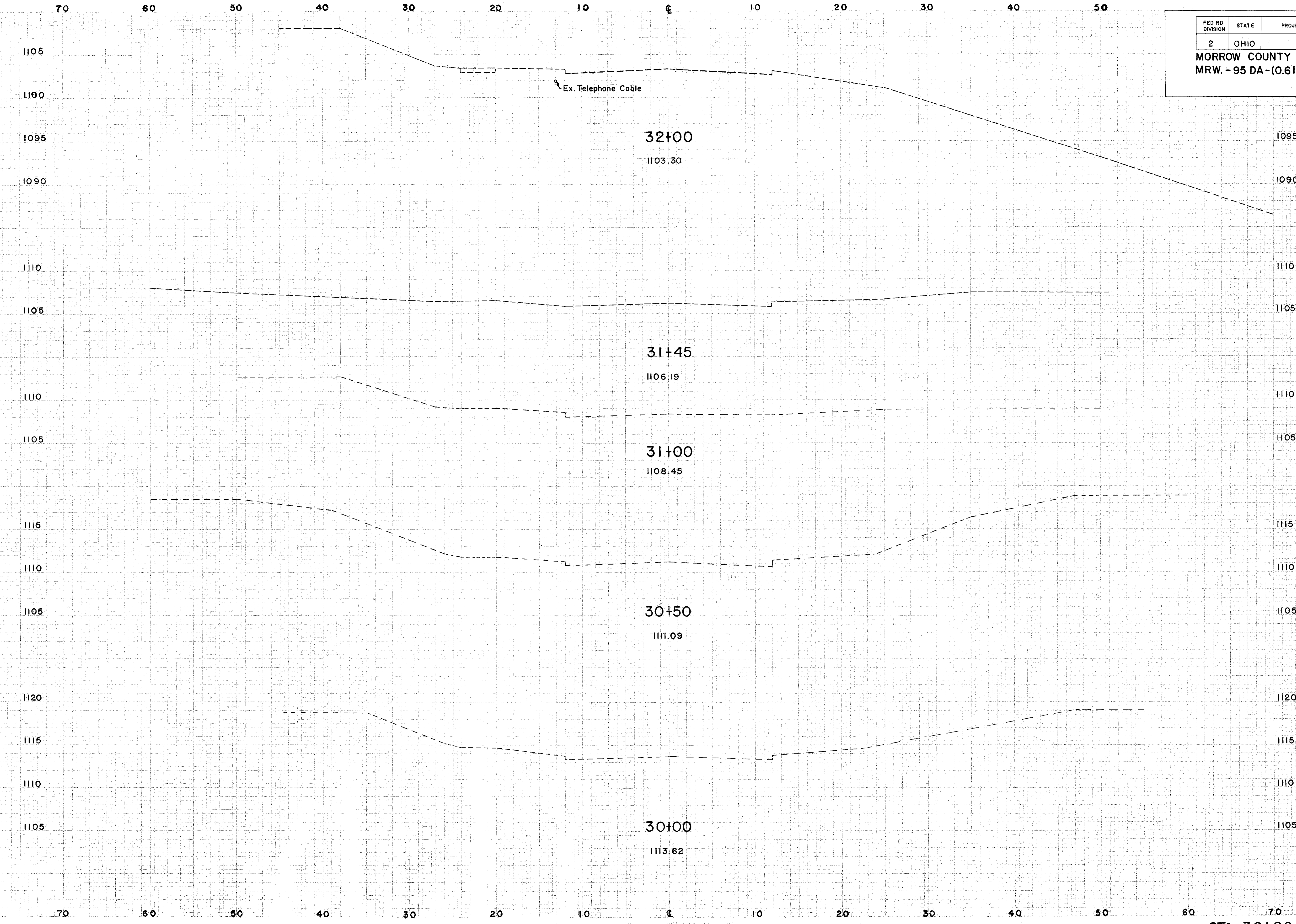
SEEDING	
END	SQ.
WIDTH	YDS.
0	

FED RD DIVISION	STATE	PROJECT
2	OHIO	

7
15

MORROW COUNTY
MRW. - 95 DA - (0.61 - 0.67)

END AREA		VOLUME	
CUT	FILL	CUT	FILL
0	0		



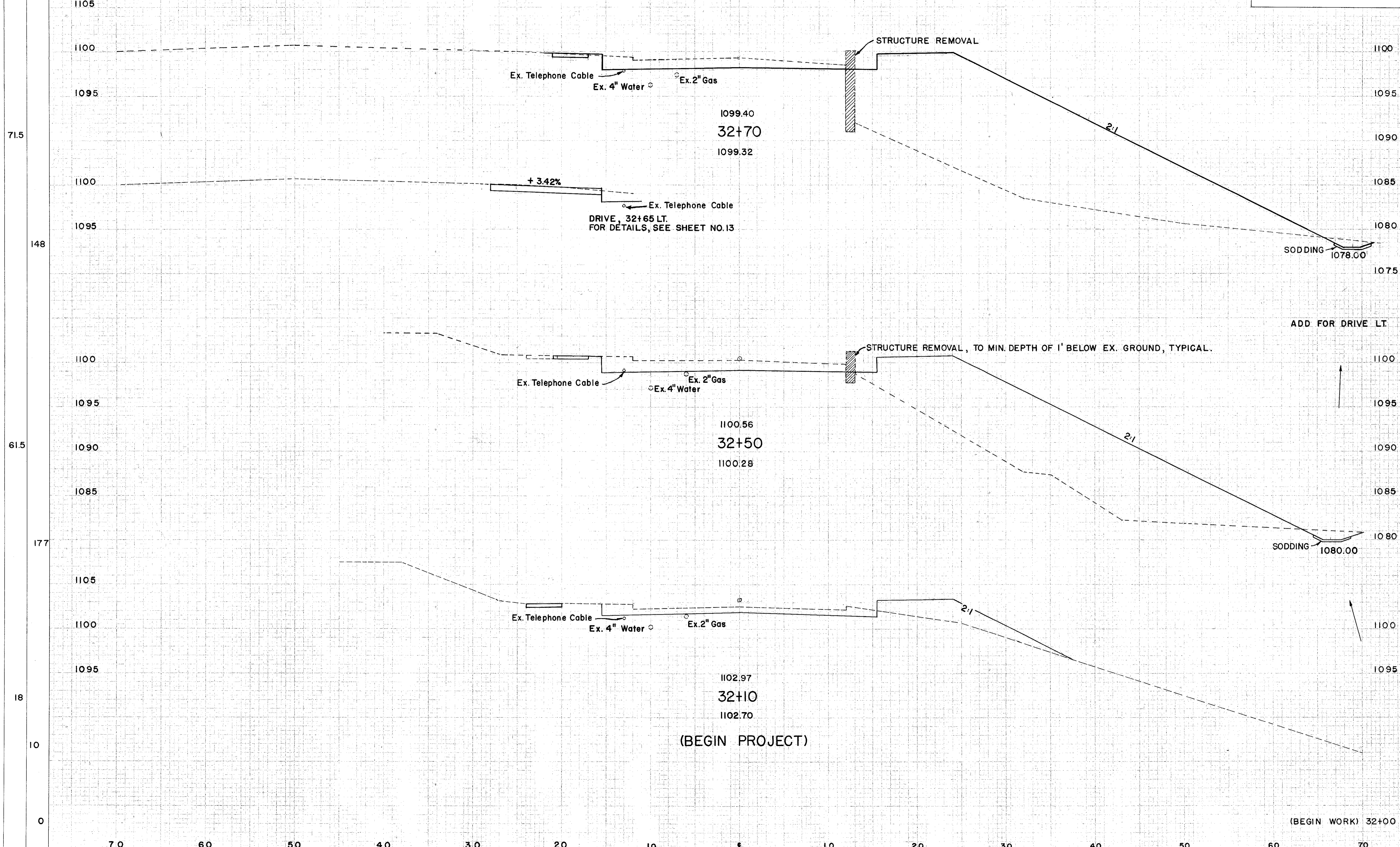
STA. 30+00 TO STA. 31+45

SEEDING	
END	SO.
WIDTH	YDS.

FED. RD. DIVISION	STATE	PROJECT
2	OHIO	

8
15

MORROW COUNTY
MRW-95 DA-(0.61-0.67)



STATION	END AREA		VOLUME	
	CUT	FILL	CUT	FILL
32+70	46	419		
32+65			33	270
32+50	42	309		
32+10	23	30		
(BEGIN WORK) 32+00	0	0		

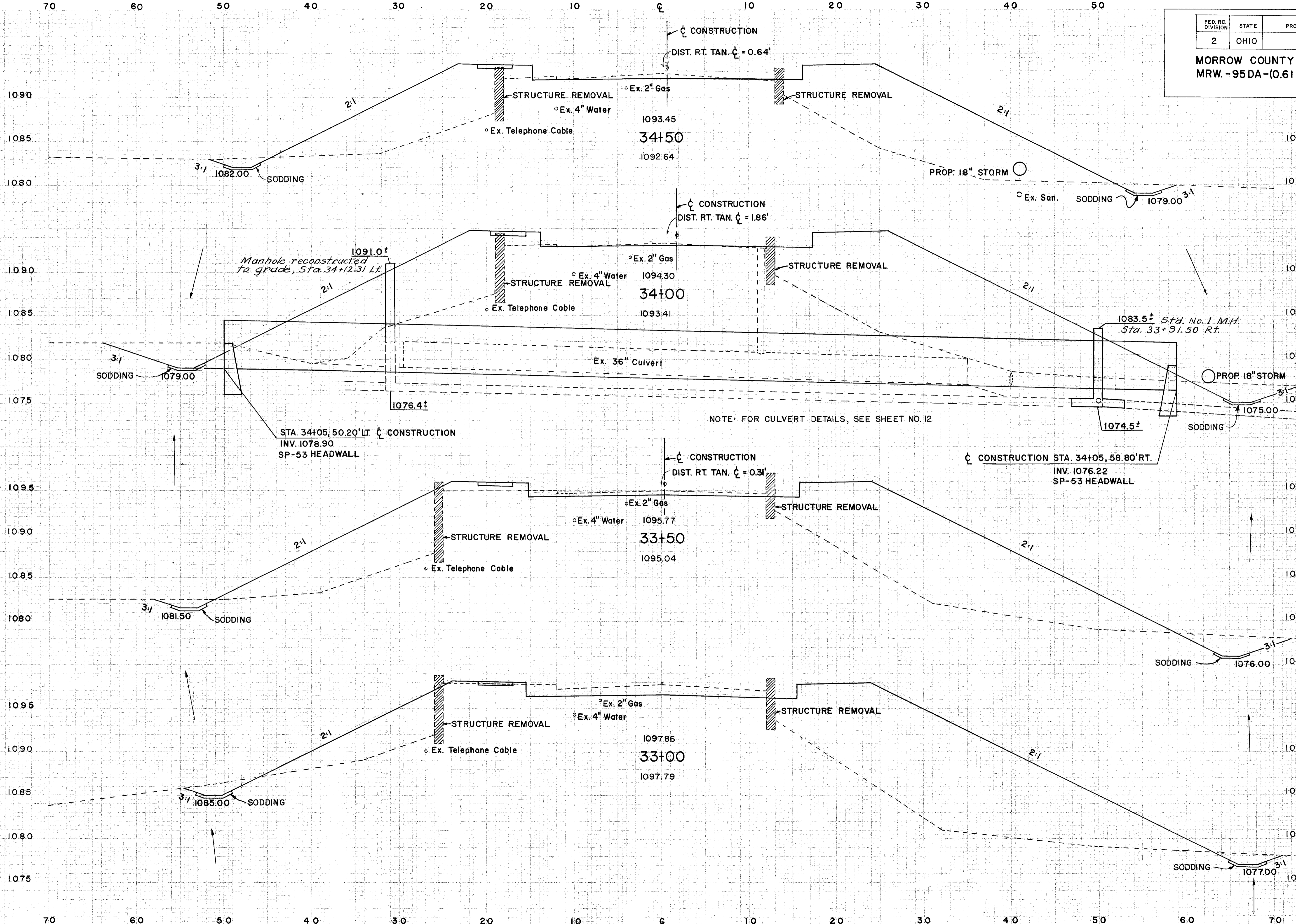
(BEGIN PROJECT) 32+10 TO STA. 32+70

SEEDING	END WIDTH	SQ. YDS.
	83	
	540	
	111.5	
	600	
	104.5	
	567	
	99.5	
	285	

FED. RD. DIVISION	STATE	PROJECT
2	OHIO	

MORROW COUNTY
MRW.-95DA-(0.61 -0.67)

END AREA	VOLUME	
	CUT	FILL
20	350	
60	820	
45	535	
80	885	
41	421	
81	814	
46	458	
51	487	



STA. 33+00 TO STA. 34+50

SEEDING
END SO.
WIDTH YDS.

0
56
20
124
245
293
81
456

70 60 50 40 30 20 10 0 10 20 30 40 50

EARTHWORK MATCH LINE
= 10+14.50 (RICH ST.)

EARTHWORK MATCH LINE
= 9+85.50 (RICH ST.)

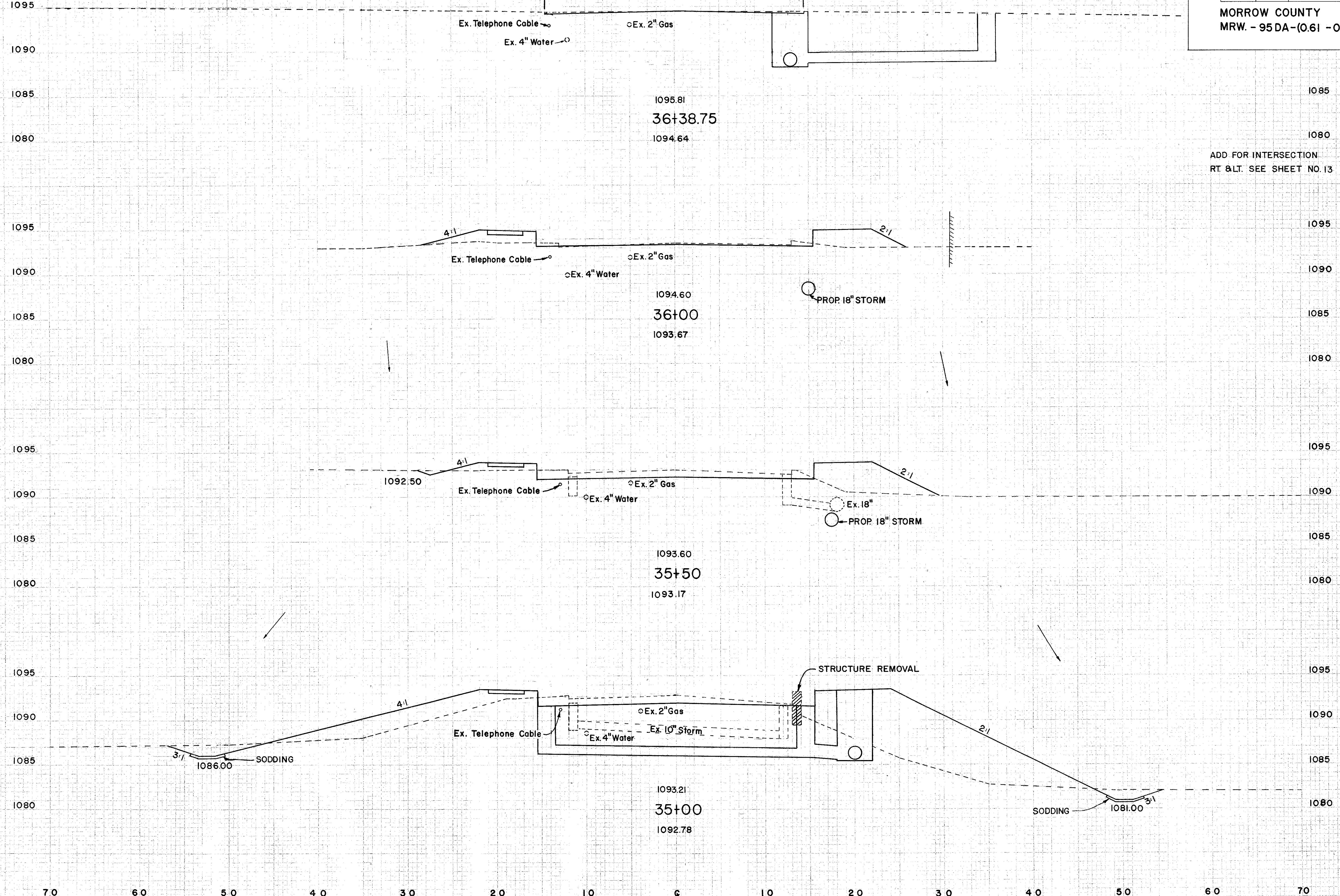
FED. RD. DIVISION	STATE	PROJECT
2	OHIO	

10
15

MORROW COUNTY
MRW. - 95DA-(0.61 -0.67)

END AREA		VOLUME	
CUT	FILL	CUT	FILL
4	0		
		34	11
		8	24
		29	68
24	40		
		108	217
38	194		
		54	504

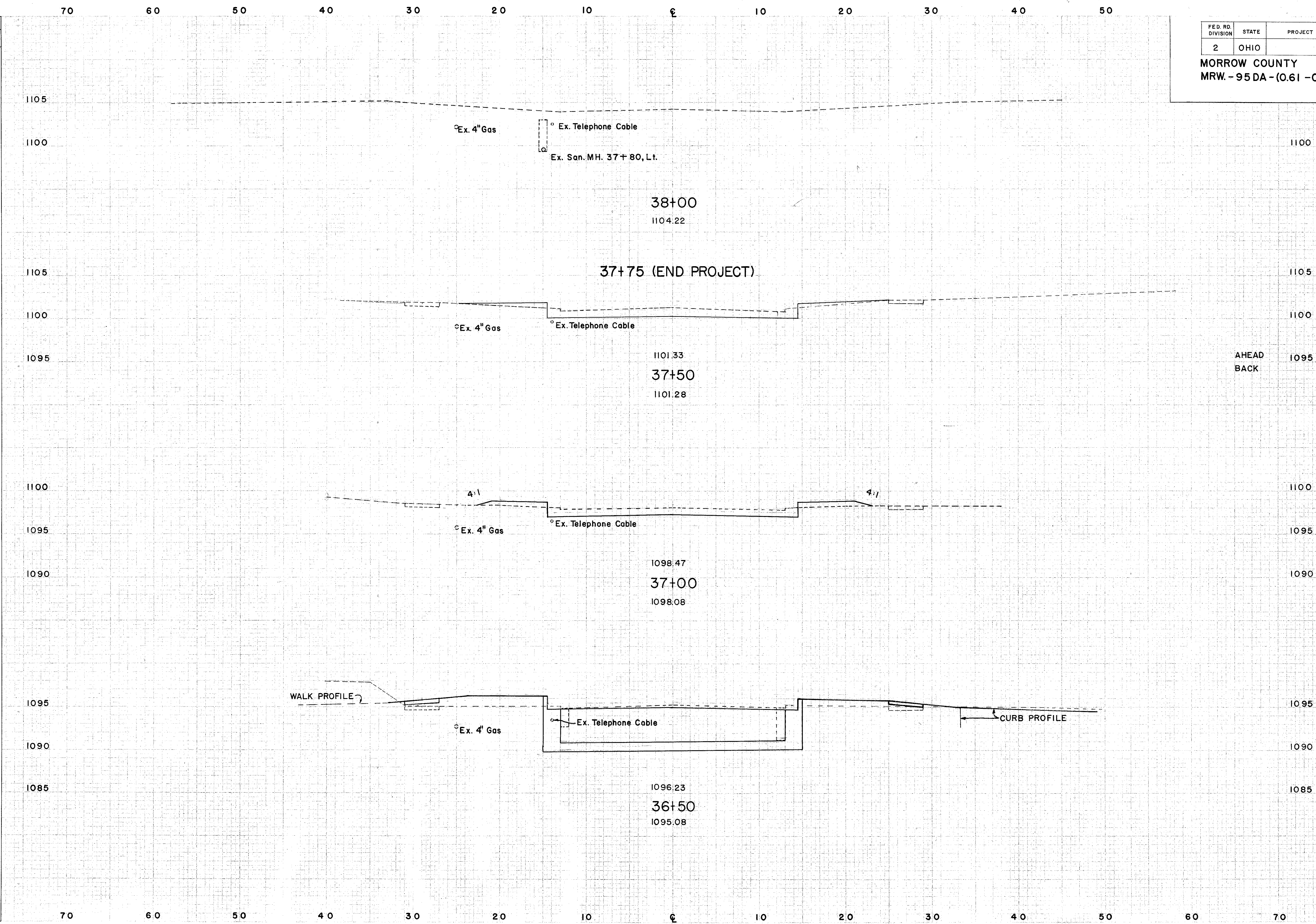
ADD FOR INTERSECTION
RT. & LT. SEE SHEET NO. 13



STA. 35+00 TO STA. 36+38.75

SEEDING
END SQ.
WIDTH YDS.

0
12
21
117
21
105
17
129
29.5
20



FED. RD. DIVISION	STATE	PROJECT
2	OHIO	

11
15

MORROW COUNTY
MRW - 95 DA - (0.61 - 0.67)

STATION	END AREA		VOLUME	
	CUT	FILL	CUT	FILL
38+00				
37+75 (END PROJECT)	0	0	0	3
37+50	0	7	0	7
37+00	25	9	47	15
36+50	7	28	30	35
			2	6

STA. 36+50 TO STA. 38+00

MORROW COUNTY
MRW-95 DA-(0.61-0.67)

CULVERT DATA

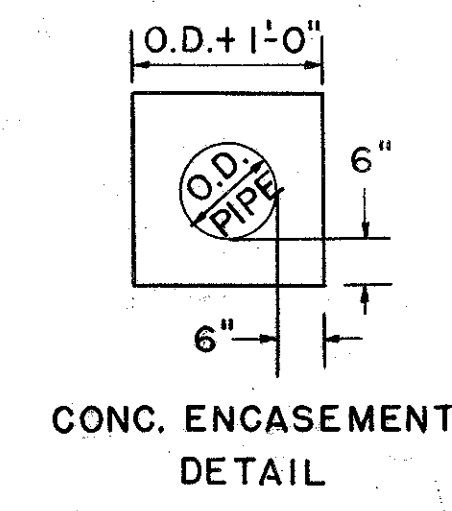
TYPE: PIPE CULVERT, PAVED BIT. COATED C.M.P.
STD. DWG. I-1 & S.P. 53

SIZE: 66" x 109"
WORK REQUIRED: INSTALL A 66" PAVED BIT. COATED C.M.P. 92° 41' SKEW TO CONSTRUCTION C WITH SP-53 HEADWALLS.

EXCAVATE INLET CHANNEL, AS SHOWN.

PLACE 30" THICK DUMPED ROCK CHANNEL PROTECTION AT OUTLET CHANNEL, AS SHOWN.

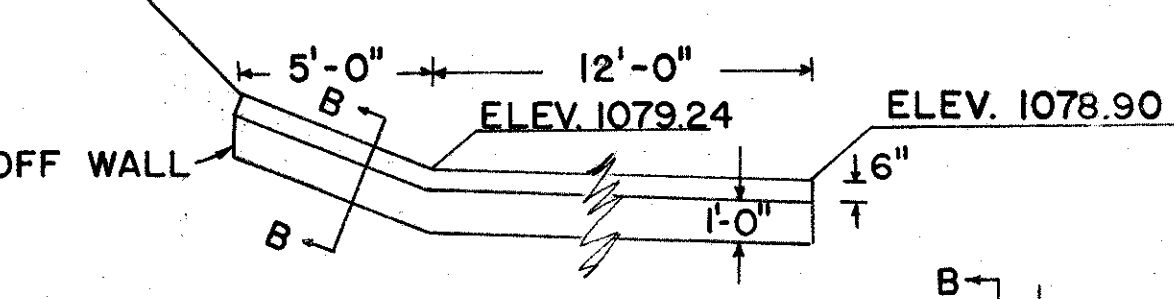
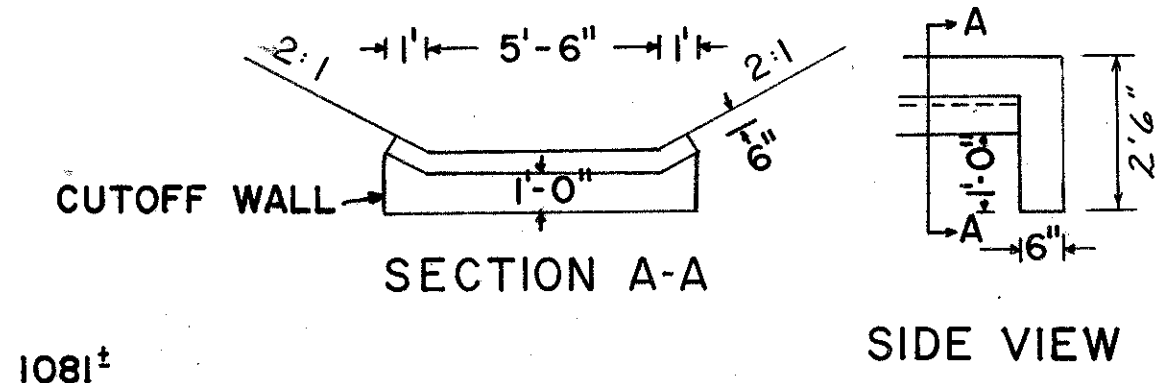
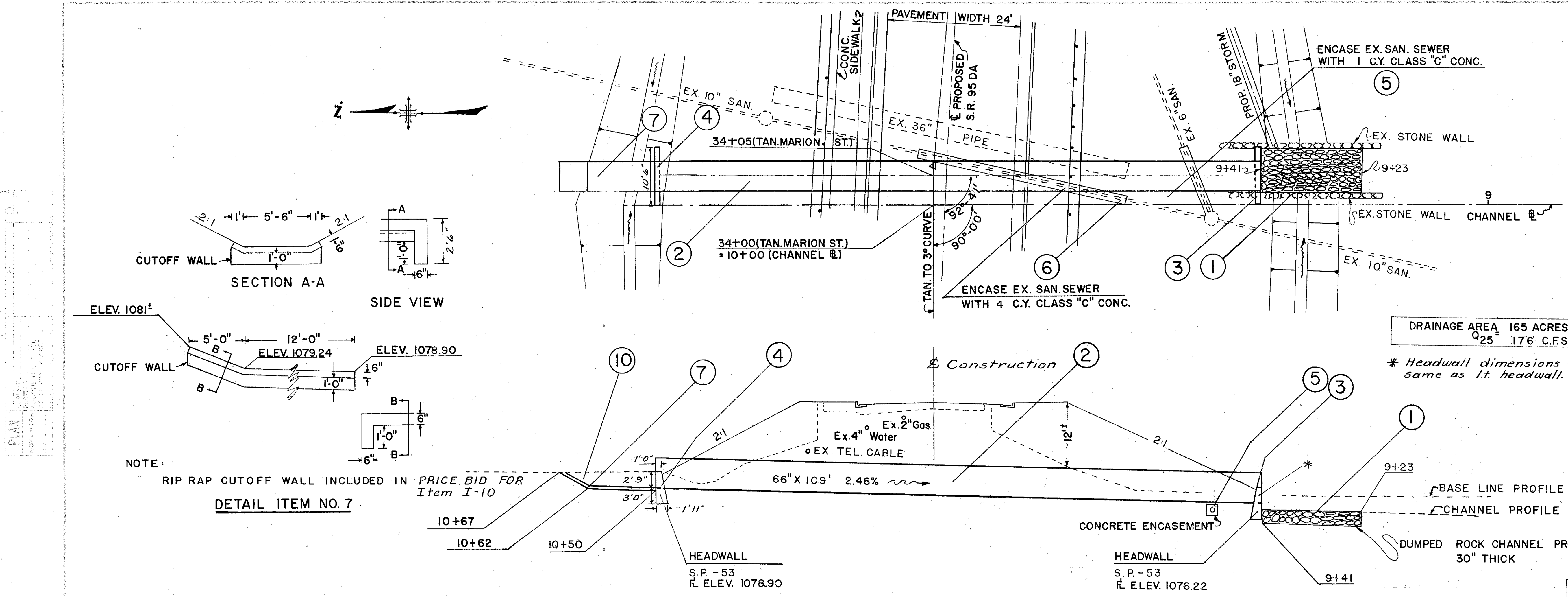
ENCASE EXIST. SAN. SEWERS WITH CLASS "C" CONCRETE, AS SHOWN.



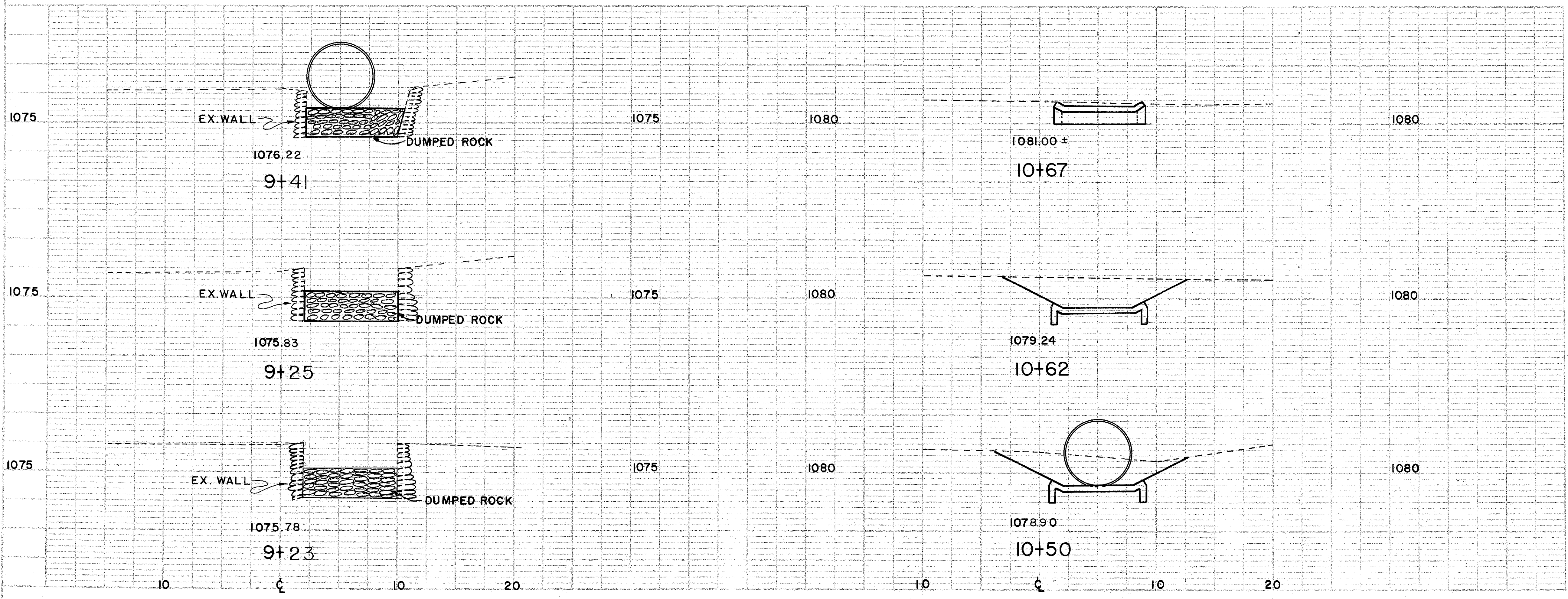
SCALE: 1" = 10'

DRAINAGE AREA 165 ACRES
Q₂₅ 176 C.F.S.

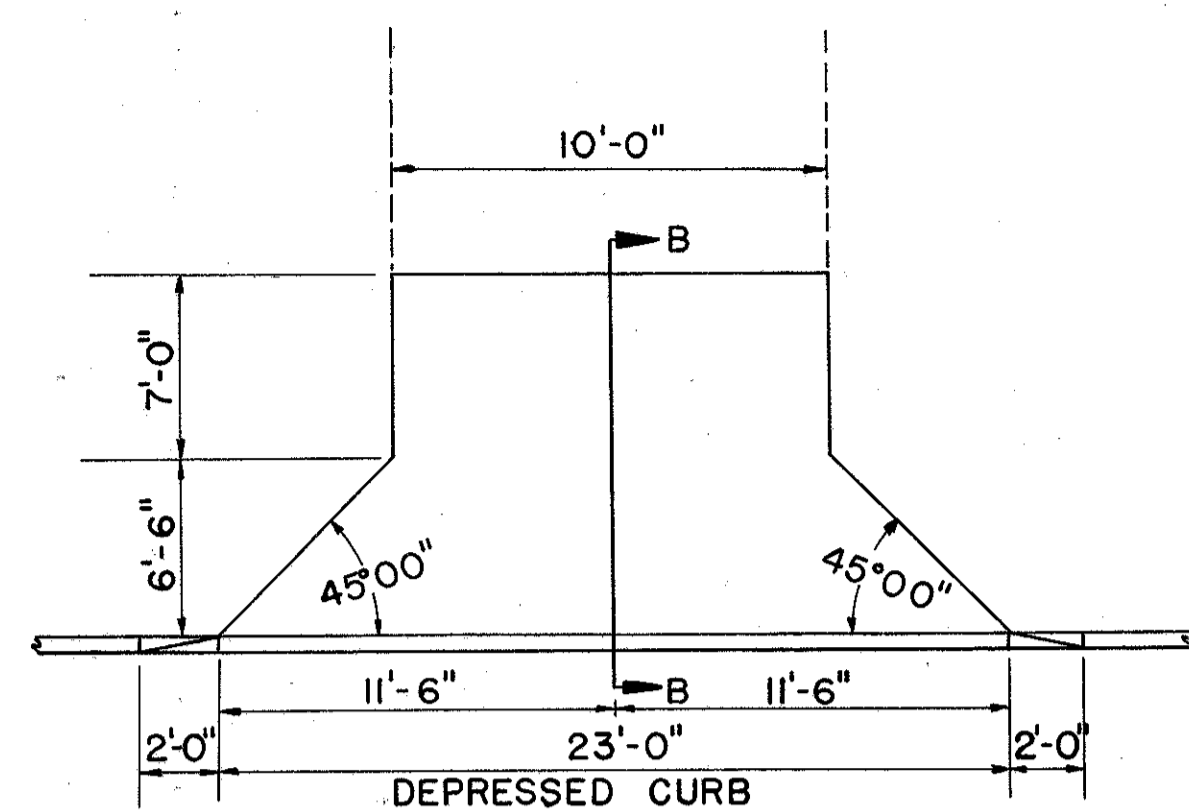
* Headwall dimensions same as 1' headwall.



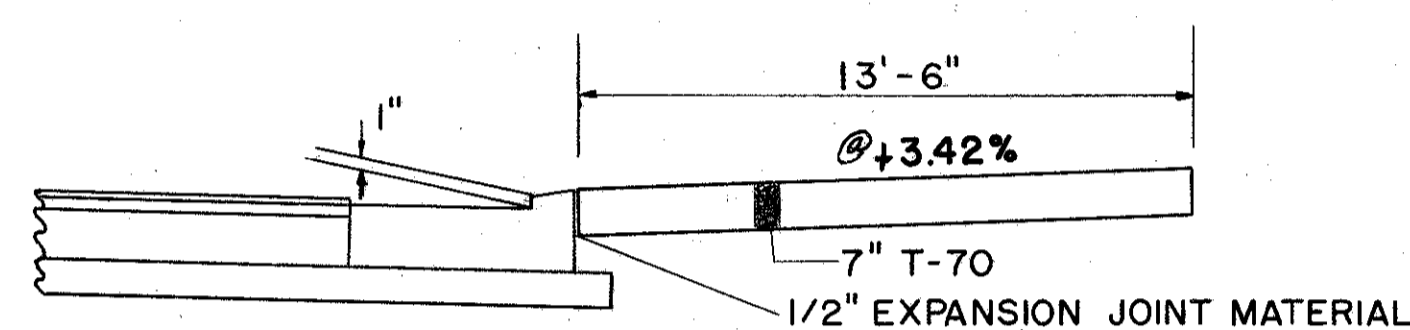
NOTE: RIP RAP CUTOFF WALL INCLUDED IN PRICE BID FOR Item I-10
DETAIL ITEM NO. 7



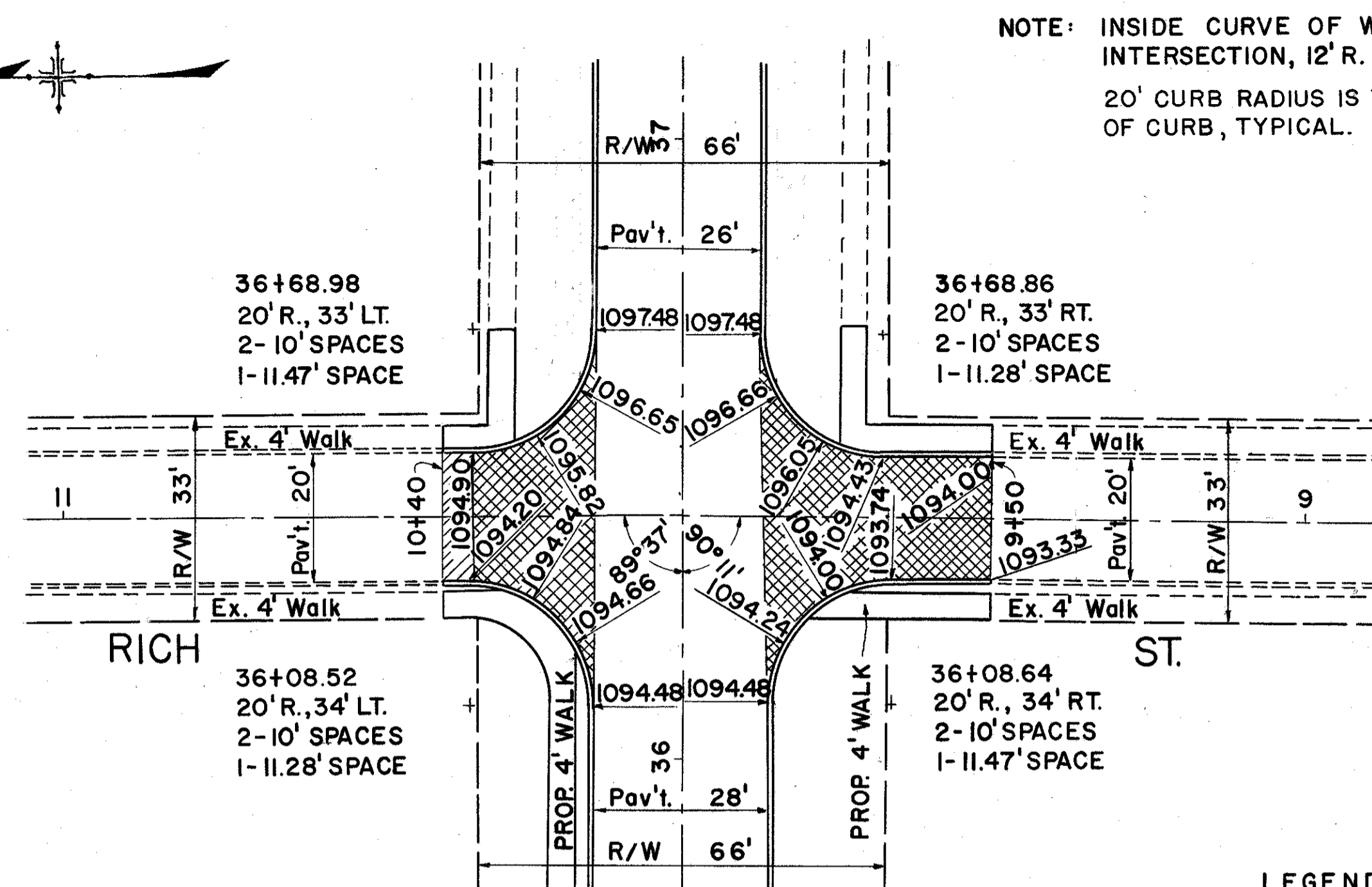
ESTIMATED QUANTITIES	I-1		E-3		I-2		I-10		I-10		TOTALS
	66" SEC. M-6.4(D) 10 GAGE CLASS A-1 L.F.	109	CHANNEL EXCAVATION C.Y.	14	MASONRY DUMPED ROCK CHANNEL PROTECTION C.Y.	13	DUMPED ROCK CHANNEL PROTECTION C.Y.	13	6" REIN. CONC. RIP RAP S.Y.	7	
STATION	9+23 To 9+41	Rt.	9+41 To 10+50	Rt.	9+41	Rt.	10+50 To 10+67	Rt.			
REF. NO.	1		2		3		4		5		10



DRIVEWAY DETAIL
STA. 32+65 LT.



SECTION B-B



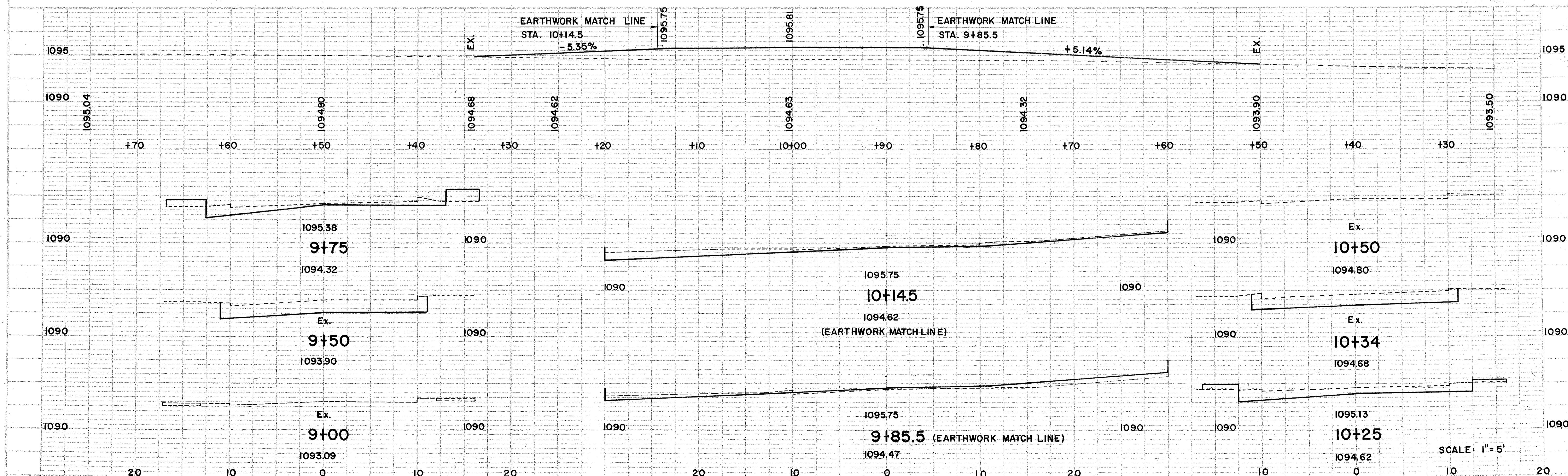
SCALE: 1" = 20'

LEGEND

- PAVEMENT REMOVAL
- T-35 FEATHERING

NOTES:

- (A) FOR EARTHWORK, SEE SHEET NO. 10
- (B) ALL ELEVATIONS ARE FINISHED PAVEMENT.

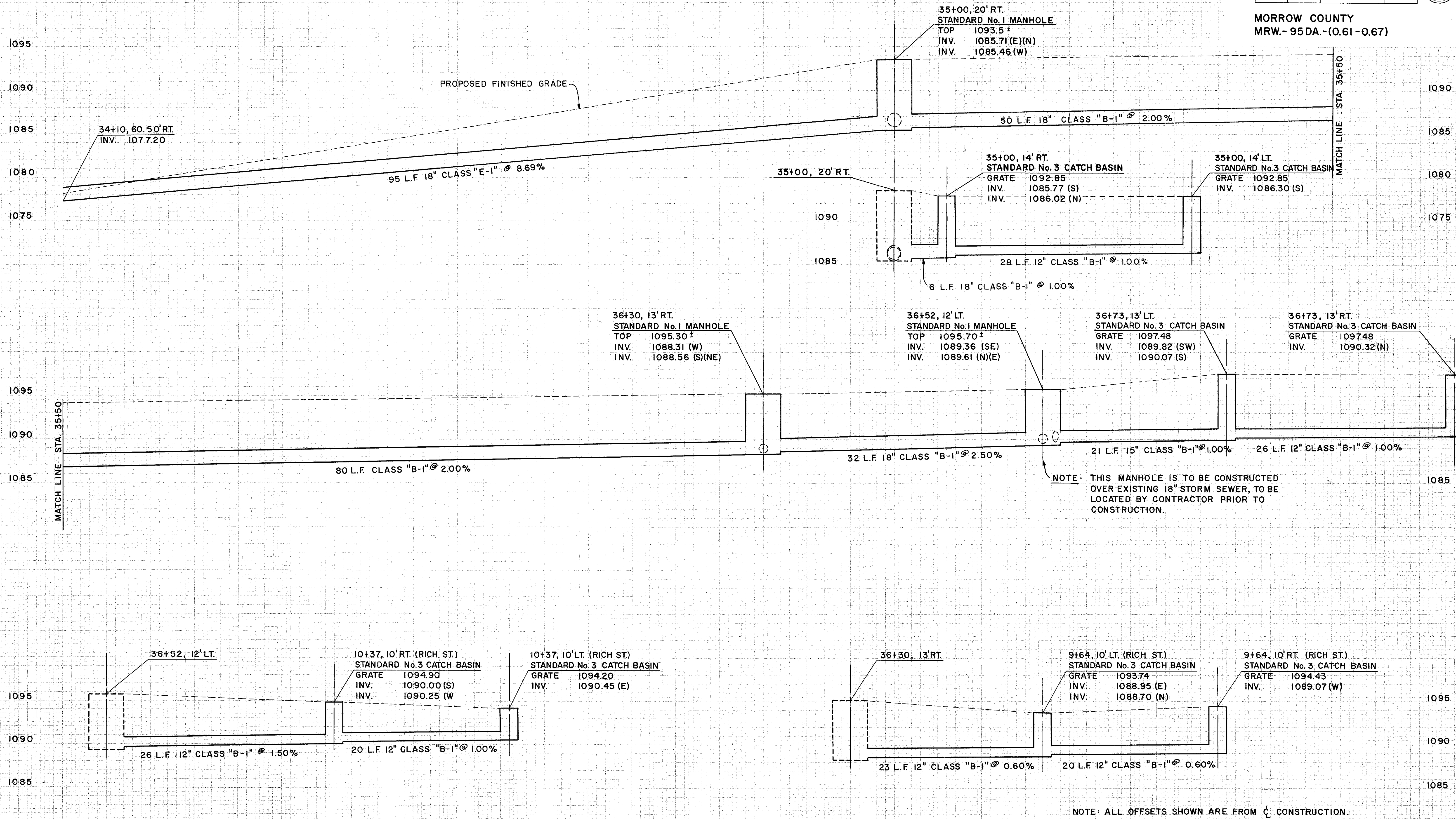


SCALE: 1" = 5'

FED. RD. DIVISION	STATE	PROJECT
2	OHIO	

14
15

MORROW COUNTY
MRW- 95DA-(0.61-0.67)



NOTE: THIS MANHOLE IS TO BE CONSTRUCTED OVER EXISTING 18" STORM SEWER, TO BE LOCATED BY CONTRACTOR PRIOR TO CONSTRUCTION.

NOTE: ALL OFFSETS SHOWN ARE FROM C CONSTRUCTION.

SCALE: 1" = 5'

STORM SEWERS

NOTE: ALL R/W OFFSETS ARE FROM TANGENT CENTERLINE.

NOTE: R/W POINTS AT STA. 34+07.58 ARE ON BISECTOR OF PI. ANGLE.

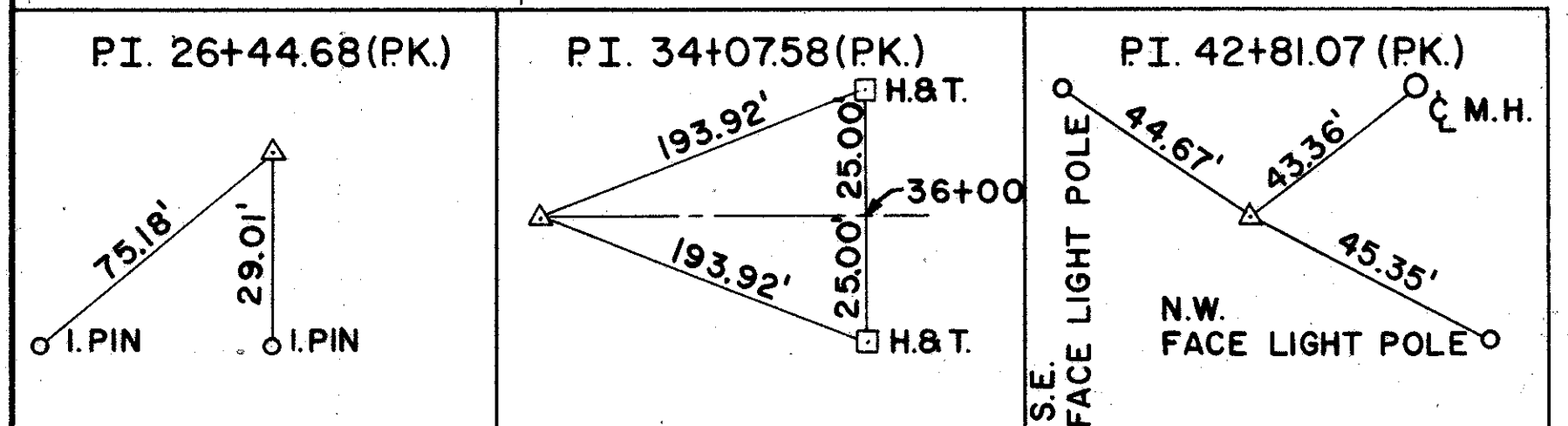
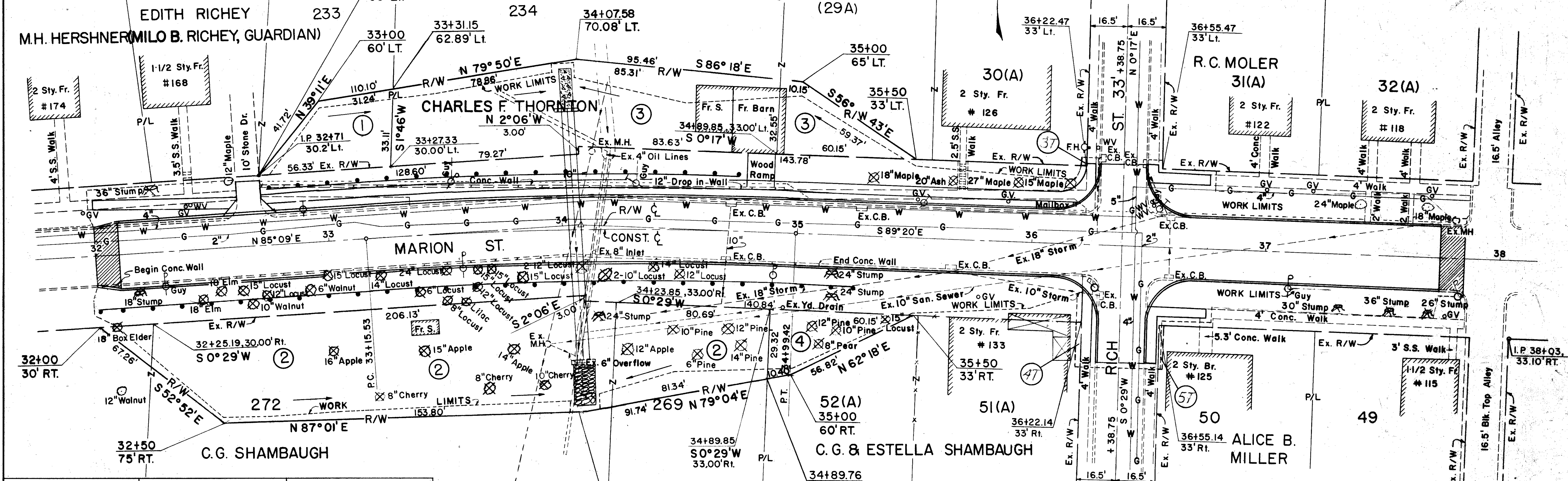
NOTE: STATION EQUATION FOR R/W ONLY.
P.I. STA. 34+07.58 BACK = STA. 34+07.41 AHEAD

MORROW COUNTY
GILEAD TOWNSHIP
VILLAGE OF MT. GILEAD, OHIO

FED. RD. DIVISION	STATE	PROJECT
2	OHIO	

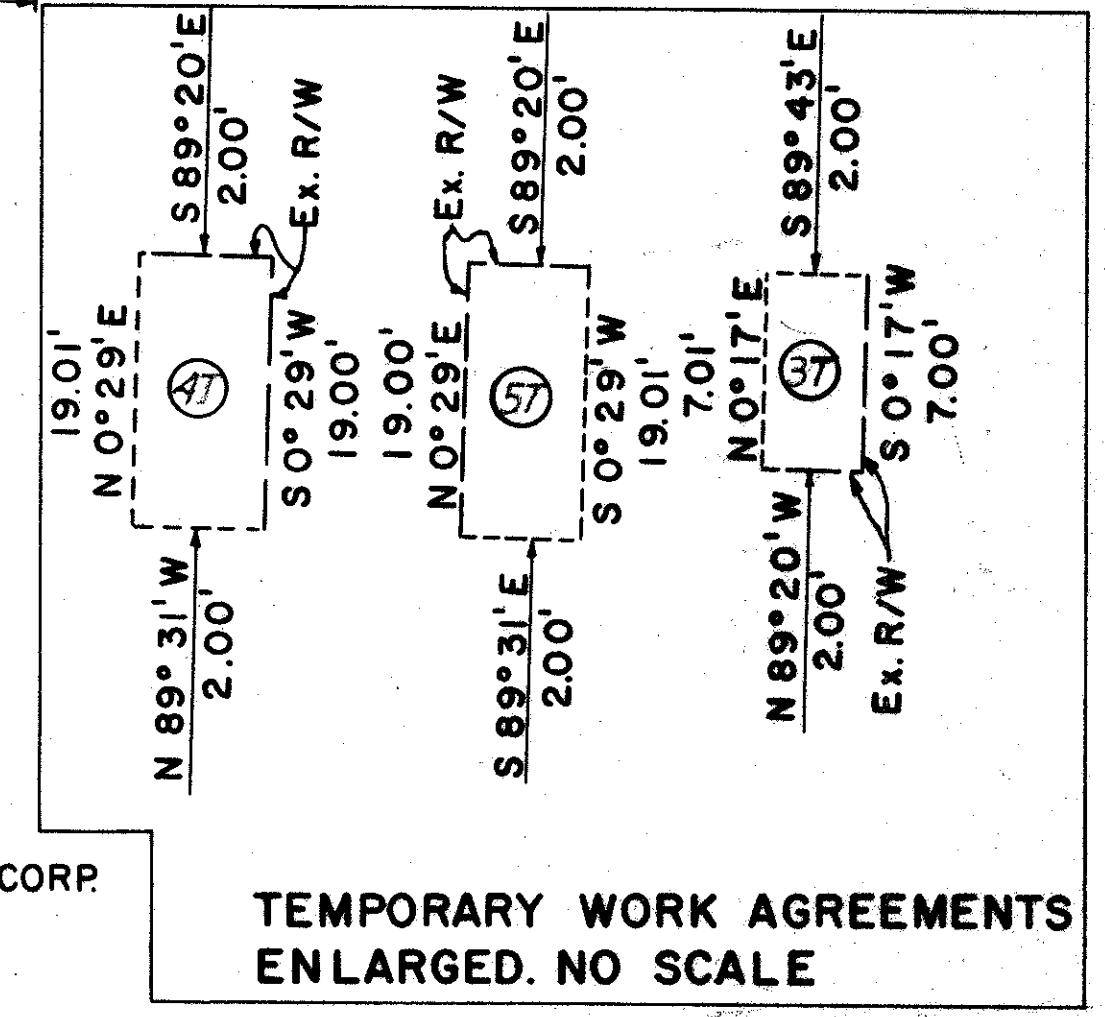
15
15

MORROW COUNTY
MRW - 95DA-(0.61 - 0.67)



PROP STRUCTURE
MRW-95DA-0064

Ex. Structure
MRW-95DA-0065



PARCEL NO.	OWNERS NAME:	*MICRO ROLL		TO BE ACQUIRED		REMARKS:
		DEED VOL.	PAGE	SQ. FT.	BLDG.	
②	C.G. SHAMBAUGH	80	614	11,533.41	YES	LOT 269, E. PART LOT 272 (Except 66' Off W. End)(S.)
④	C.G. & ESTELLA SHAMBAUGH	71	524	959.10	NO	N 1/2 LOTS 51(A) & 52(A)
①	EDITH RICHEY	146	501	1,350.79	NO	LOT 233
③	CHARLES F. THORNTON	156	207	6,946.69	YES	S 1/2 LOTS 29(A), 30(A) & S 1/2 LOT 234 (Barn)
①	EDITH RICHEY, (MILO B. RICHEY, GUARDIAN)	*	2336			GUARDIANSHIP (PROBATE COURT)
④⑦	C.G. & ESTELLA SHAMBAUGH	71	524	38.01	NO	TEMPORARY WORK AGREEMENT
⑤⑦	ALICE B. MILLER	137	506	38.01	NO	TEMPORARY WORK AGREEMENT
③⑦	CHARLES F. THORNTON	156	207	14.01	NO	TEMPORARY WORK AGREEMENT

UTILITY	OWNER
OIL LINE	BARRON OIL COMPANY P.O. BOX 1023 MARION, OHIO
TELEPHONE LINES	OHIO CENTRAL TELEPHONE CORP. 33 E. CENTER ST. MT. GILEAD, OHIO
POWER LINES	OHIO EDISON COMPANY 15 W. HIGH ST. MT. GILEAD, OHIO
GAS LINES	OHIO FUEL COMPANY 16 S. MAIN ST. MT. GILEAD, OHIO
OIL LINE	DYNAMIC OIL COMPANY PETROLEUM BUILDING MT. GILEAD, OHIO

345	Changed Par's Nos.	12-20-00	FEU
	Changed W/L	2-26-01	
NO.	DESCRIPTION	DATE	BY
REVISIONS			