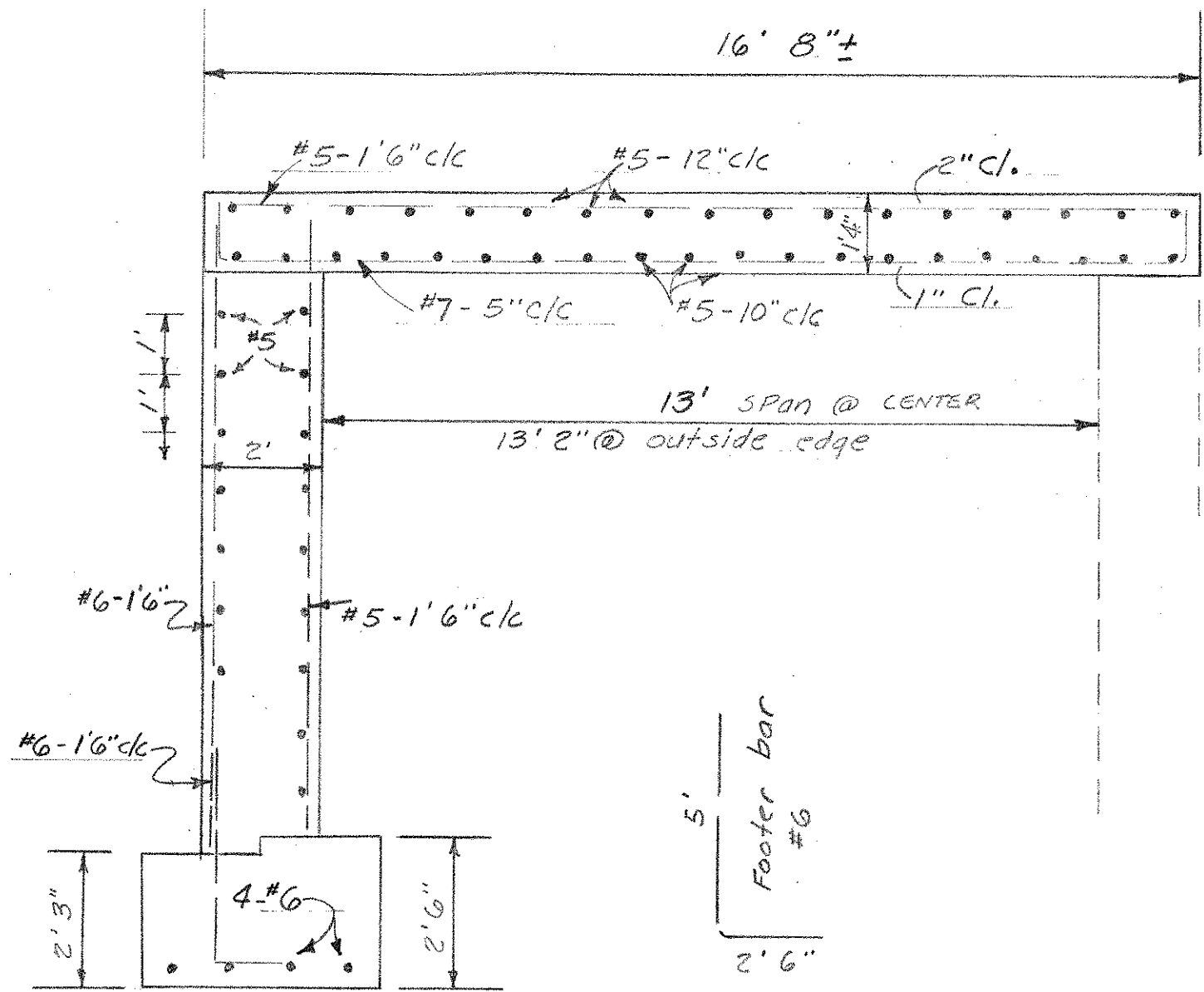


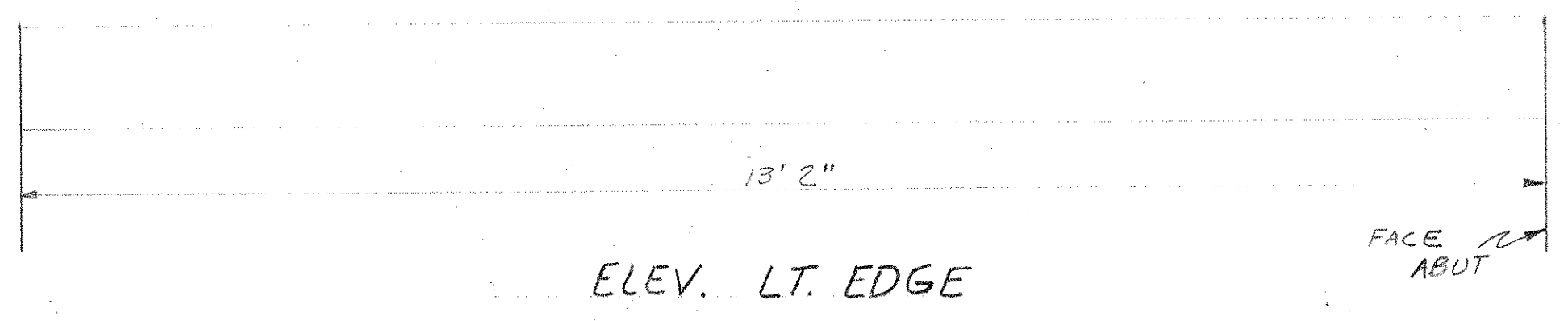
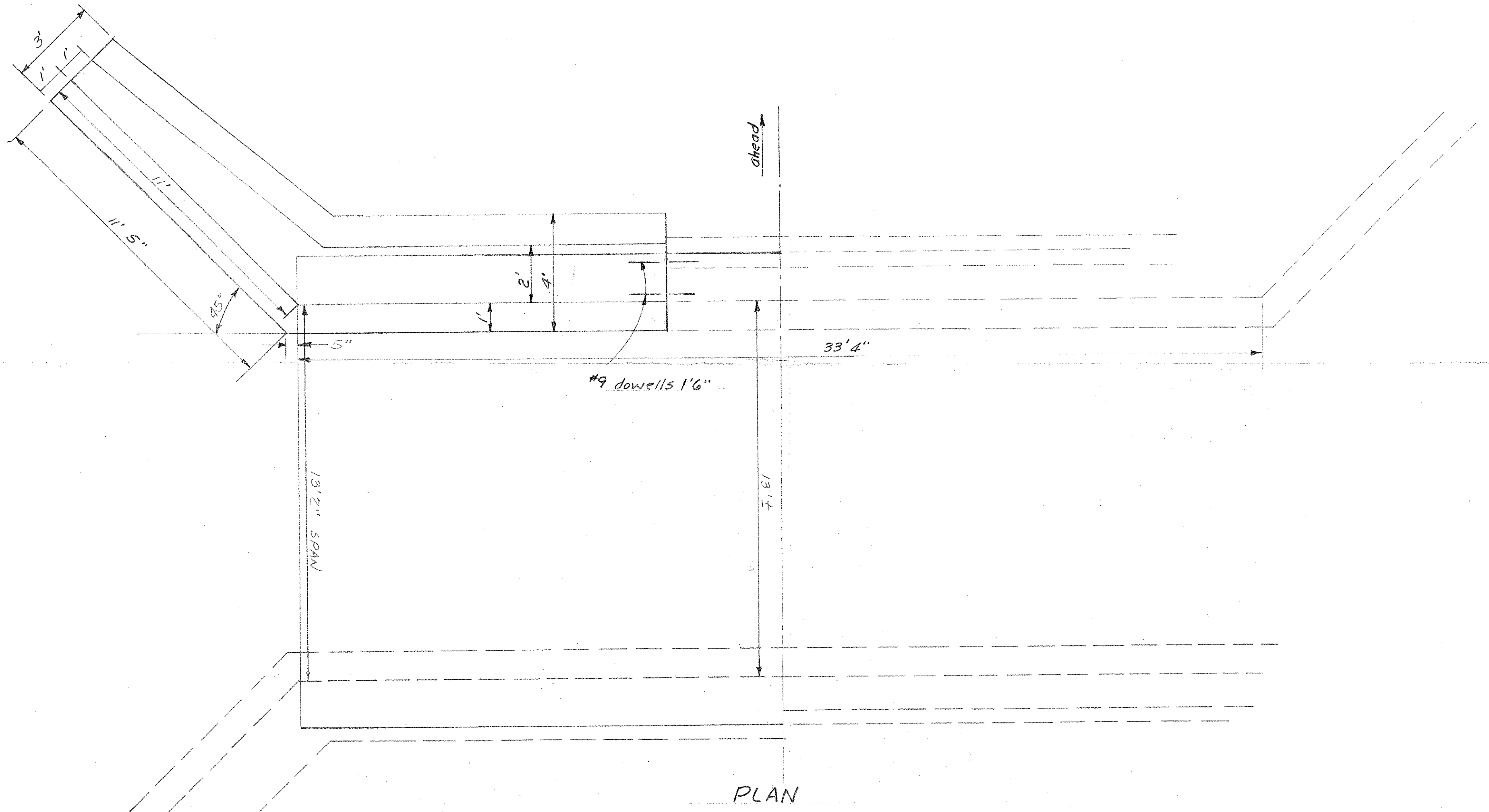
MICROFILMED

APR 15 1987

BR. MUS-208-0276  
Repair washout Lt. side of  
Fwd. abut. & slab.  
Force Account Sept. 1980

(3/4)



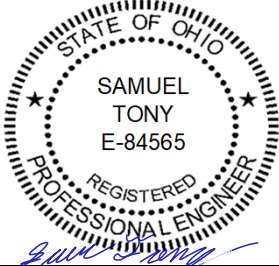




# BRIDGE LOAD RATING SUMMARY REPORT

## OFFICE OF STRUCTURAL ENGINEERING OHIO DEPARTMENT OF TRANSPORTATION

SFN	Bridge Number	DISTRICT	GPS COORDINATES	
			LATITUDE:	LONGITUDE:
6005349	MUS-00208-0319	5	40.12315	-81.963097
ORIGINAL YEAR BUILT	YEAR REBUILT	TOTAL BRIDGE LENGTH	FEATURE INTERSECTED (Below)	
1930	1980	15 ft	SR208 OVER DITCH	
SPECIAL ASSUMPTIONS & COMMENTS	Modeled from original plans (1930), rehab plans (1980), and ODOT standard drawings, and inspection records.			
	Single Span (13'-2" f/f abt) reinforced concrete slab on a tangent alignment.			
	Wearing surface of 4.00" thick Asphalt included per NBIS records.			
	Minimum Legal Rating = 1.936, Live Load = EV2, Member = Slab (Full Width) @ Span 1 - (50.0%) (6.58ft along the member) : Limit State = STRENGTH-I Concrete Flexure			

PLEASE SELECT ON RIGHT, WHERE APPROPRIATE, BY USING THE DROP DOWN ARROW BUTTON			
LOAD RATING PURPOSE:	8 - Update Analysis Model and Software	Sealed by:	
GENERAL APPRAISAL (0-9):	4	Sam Tony	
LOAD RATING SOFTWARE:	3 - AASHTO BrR		
SOFTWARE VERSION:	7.2.0.3001		
ROUTINE PERMIT LOAD (RPL):	N - Agency does not issue routine permits		
RATING SOURCE:	1 - Plan information available for load rating analysis		
LOAD RATING METHOD:	LRFR - Load & Resistance Factor Rating (RF) - Code 8		
DESIGN LOADING:	3 - HS15		

OHIO & AASHTO LEGAL VEHICLES					Design Inventory and Operating Ratings					
Legal Load	GVW (Tons)	No of Axles	Rating Factor RF	Safe Weight (Tons)	Loading Type	Rating by RF		Recommendation	Sign Posting Recommendation:	
						Inventory	Operating			
2F1	15	2	3.243	15.00	HL93 Loading	1.247	1.616	No Load Posting is Recommended		
3F1	23	3	2.677	23.00						
5C1	40	5	2.677	40.00						
Type 3	25	3	2.677	25.00						
Type 3-3	40	6	3.251	40.00						
Type 3S2	36	5	2.937	36.00						
SPECIALIZED HAULING VEHICLES (SHV)										
SU4	27	4	2.419	27.00						
SU5	31	5	2.419	31.00						
SU6	34.75	6	2.419	34.75						
SU7	38.75	7	2.419	38.75						
EMERGENCY VEHICLES (EV) <i>Check box if rating for EV3</i> <input checked="" type="checkbox"/>					Permit Load (PL) Analysis (optional)					
EV2	28.75	2	1.936	28.75	Loading Type	GVW (Tons)	No of Axles	Rating Factor	Safe Load (Tons)	
EV3	43	3	1.811	43.00	RPL 60T	60	6	2.493	149.58	
					RPL 65T	65	7	2.362	153.53	
Controlling Legal Load RF					150%		1.50		PL Analysis Method	
									Load & Resistance Factor Rating (LRFR)	

AGENCY/FIRM/OFFICE		Gannett Fleming					
	Name	PE Number	Phone Number	Email	Report Date:	2023-05-22	
Rated By	Matt McFadden		(614) 794-9424	mamcfadden@gfnet.com			
Reviewed By	Sam Tony	84565	(614) 794-9424	stony@gfnet.com			