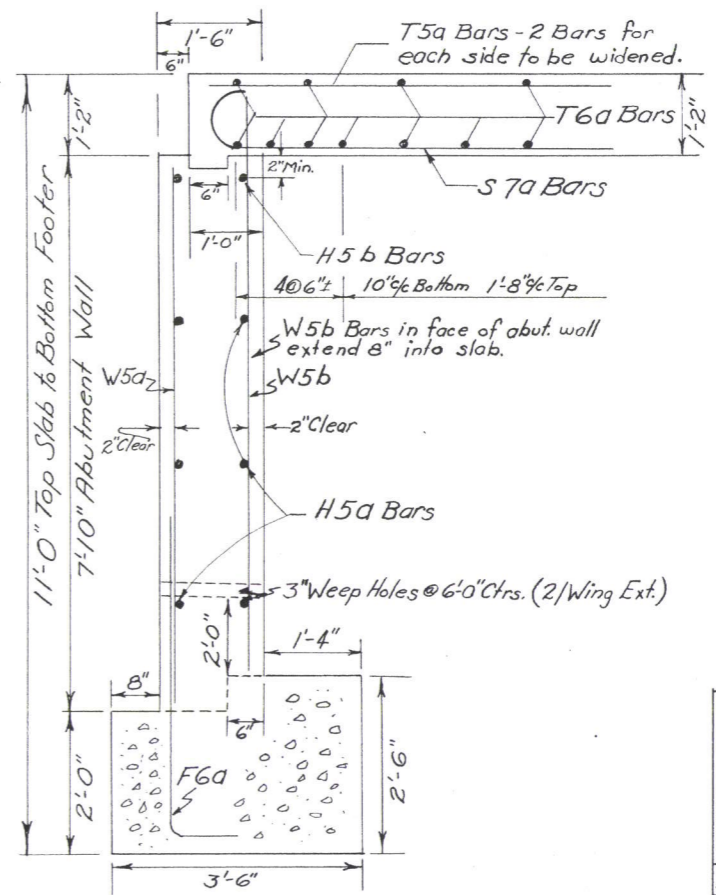
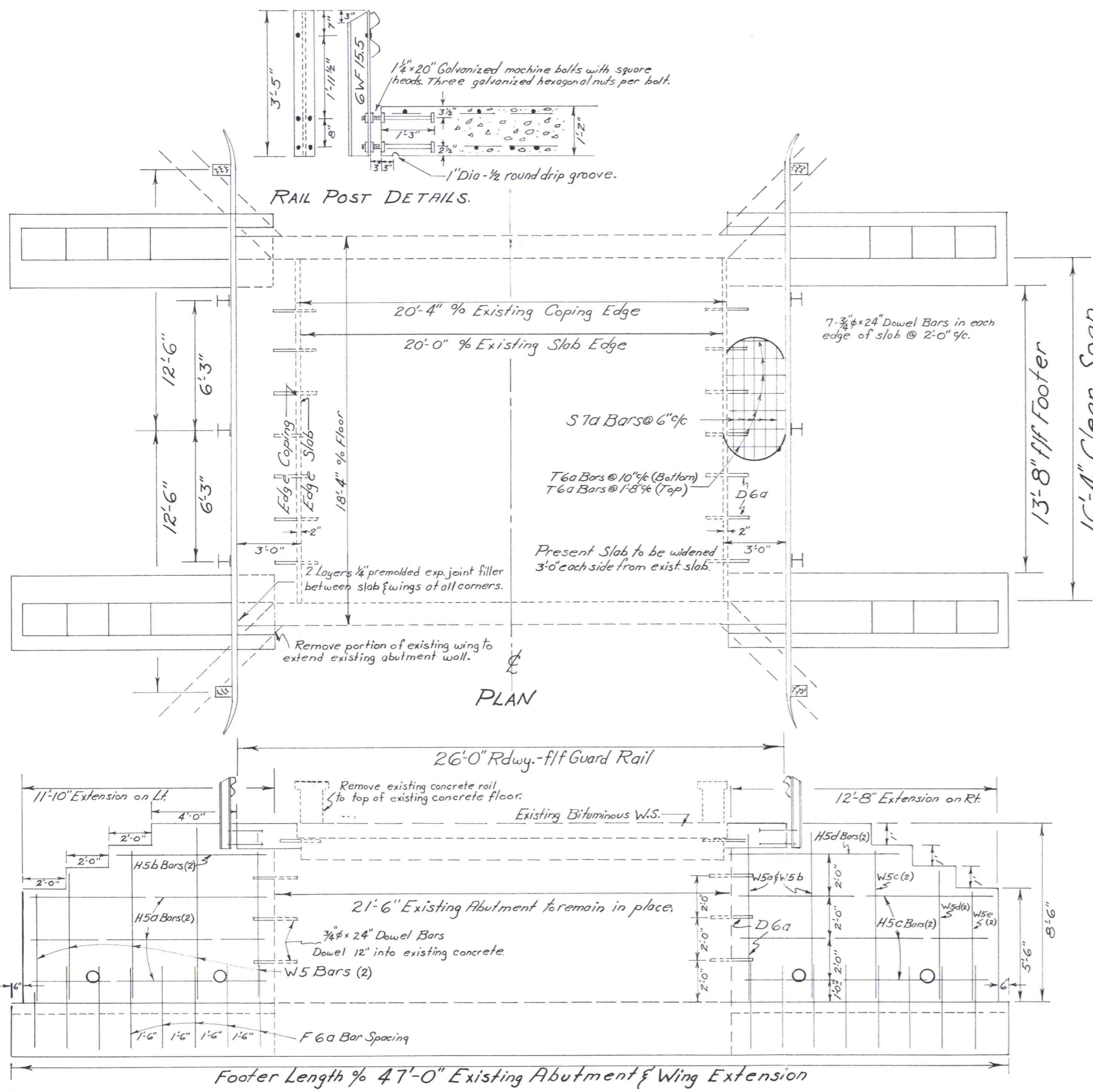
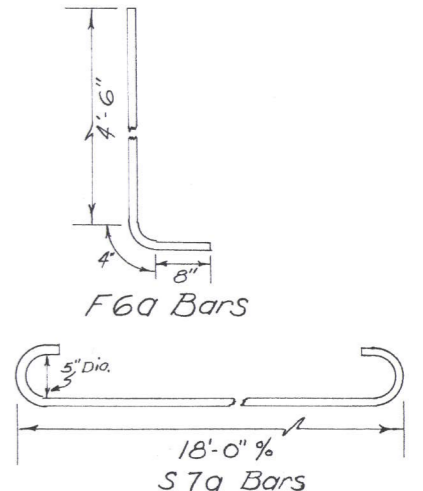


**NOBLE COUNTY  
NOB-564-0.00  
PROPOSAL NO-I**

SUMMARY OF QUANTITIES	
30	Cu. Yds. Unclassified Excavation
4.8	Cu. Yds. Class "C" Concrete, Superstructure
36.0	Cu. Yds. Class "E" Concrete, Abutments
1796	Lbs. Reinforcing Steel
8	Sq. Ft. Preformed Expansion Joint Filler
50	Lin. Ft. Steel Beam Guard Rail (Type I-15.13)
50	Removal Existing Rail & Wing Sections
50	Cu. Yds. Borrow
26	DOWEL HOLES

PROJ. 236 (85)

REINFORCING STEEL						
MARK	Qts.	SIZE	SHAPE	LENGTH	WEIGHT	
T5a	4	5/8"	Str.	18'-0"	75	
T6a	72	3/4"	Str.	2'-9"	297	
S7a	10	7/8"	Bent	19'-8"	402	
F6a	32	3/4"	Bent	5'-6"	264	
W5a	8	5/8"	Str.	7'-8"	64	
W5b	8	5/8"	Str.	8'-0"	67	
W5c	8	5/8"	Str.	7'-3"	61	
W5d	8	5/8"	Str.	6'-3"	52	
W5e	8	5/8"	Str.	5'-3"	44	
H5a	12	5/8"	Str.	11'-6"	144	
H5b	4	5/8"	Str.	7'-6"	31	
H5c	12	5/8"	Str.	12'-4"	154	
H5d	4	5/8"	Str.	8'-3"	34	
D6a	26	3/4"	Str.	2'-0"	78	
R5	1	5/8"	Str.	6'-0"	6	
R6	1	3/4"	Str.	6'-0"	9	
R7	1	7/8"	Str.	7'-0"	14	
					TOTAL	1796



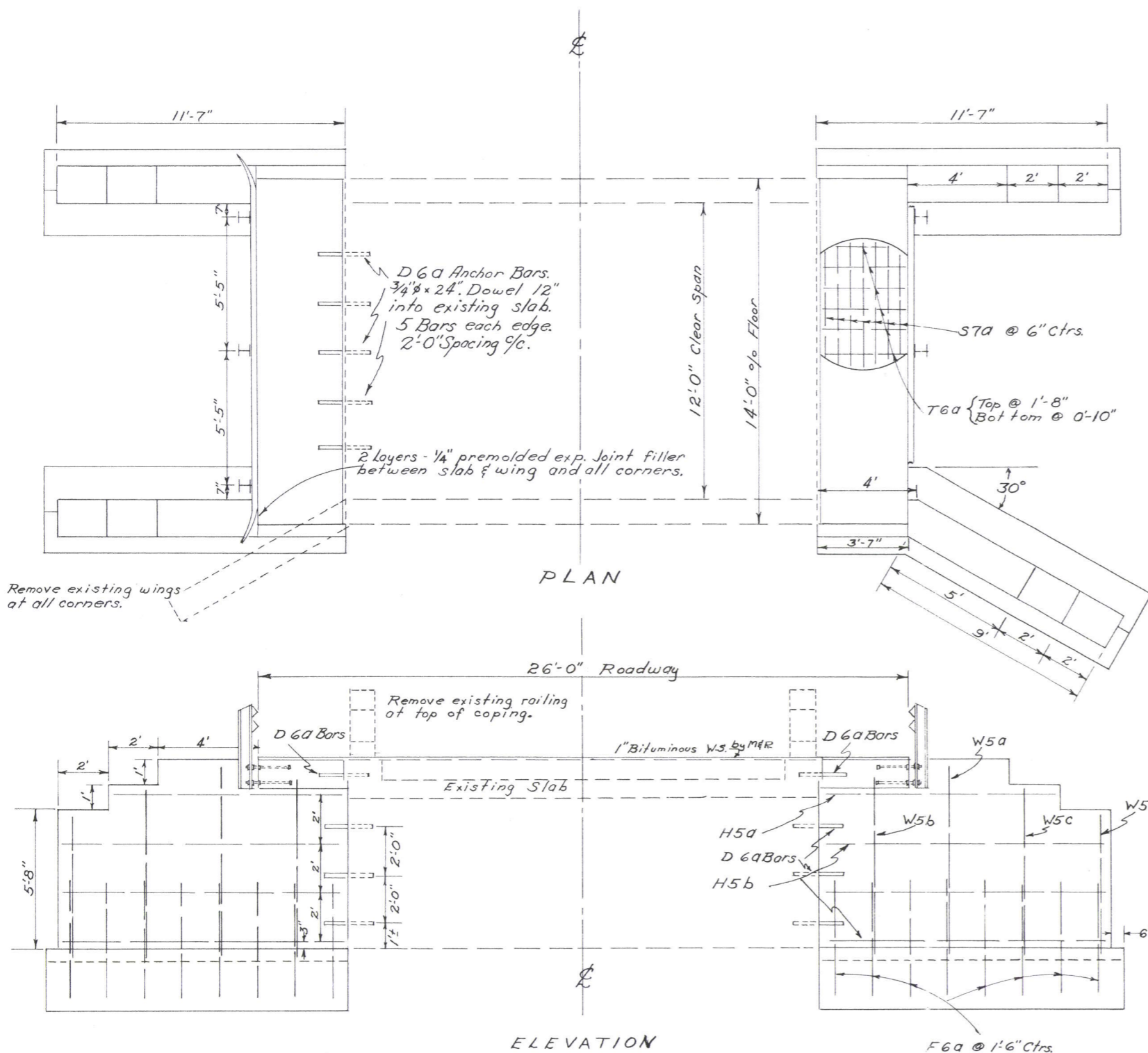
**EXISTING STRUCTURE**  
Bridge No: NOB-564-0026  
Type - Concrete Slab  
Span - 16'-4"  
Roadway - 17'-2"  
Skew - None  
Posting - None

**PROPOSED STRUCTURE**  
Bridge No: NOB-564-0026  
Type - Structure Widening  
Span - 16'-4"  
Roadway - 26'-0" f/f Rail  
Load Frequency - CF-130-51  
Skew - 0°  
Wearing Surface - Concrete  
Approach Slab - None  
Alignment - Tangent

**GENERAL PLAN & ELEVATION  
BRIDGE No: NOB-564-0026  
NOBLE COUNTY  
STATION 15+92.2 & BRIDGE**

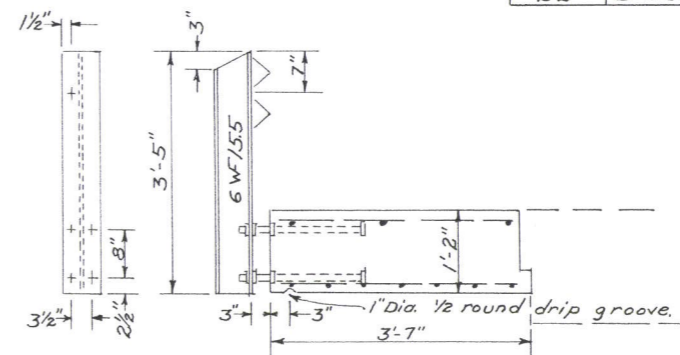
Designed	Drawn	Checked	Rev'd	Date	Revised
L.M.	L.M.	D.H.			

**NOBLE COUNTY**  
**NOB-564-0.00**  
**PROPOSAL No: 2**

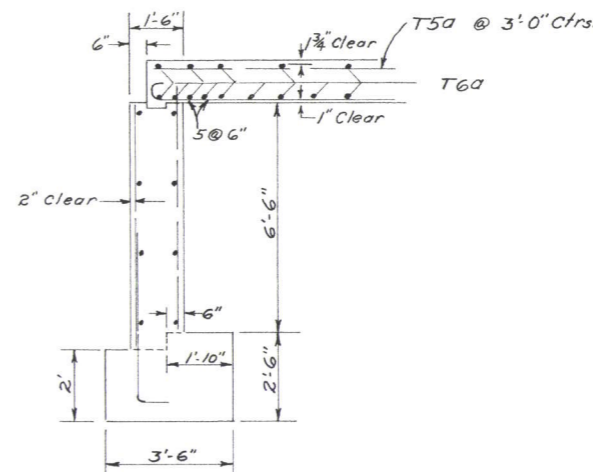


Reinforcing Steel					
MARK	Pcs.	SIZE	SHAPE	LENGTH	WEIGHT
T5a	4	5/8"	Str.	13'-8"	57
T6a	64	3/4"	Str.	3'-3"	312
S7a	14	1/6"	Bent	15'-6"	444
H5a	6	5/8"	Str.	9'-0"	56
H5b	18	"	"	11'-0"	207
H5c	2	"	Bent	10'-0"	21
H5d	6	"	"	12'-0"	75
W5a	8	5/8"	Str.	7'-6"	63
W5b	8	"	"	7'-0"	58
W5c	8	"	"	6'-6"	54
W5d	8	"	"	5'-6"	46
D6a	22	3/4"	Str.	2'-0"	66
F6a	32	3/4"	Bent	5'-6"	264
Replacement Bars 7					
R5	1	5/8"	Str.	5'-8"	6
R6	1	3/4"	"	6'-0"	9
R7	1	7/8"	"	7'-0"	14
					Total Lbs. 1752

SUMMARY OF QUANTITIES	
30	Cu. Yds. Unclassified Excavation
4.5	Cu. Yds. Class "C" Concrete, Superstructure
32.2	Cu. Yds. Class "E" Concrete, Abutments
1752	Lbs. Reinforcing Steel
8	Sq. Ft. 1/4" Premolded Expansion Joint Filler
25	Lin. Ft. Steel Beam Guard Rail (Type I-15.13)
Lump	Removal of existing rail & wing sections
35	Cu. Yds. Borrow
22	Dowel Holes



EXISTING STRUCTURE	
Br. No.	NOB-564-0480
Type	Concrete Slab
Span	12'-0"
Roadway	16'-2"
Skew	None



PROPOSED STRUCTURE	
Type	Structure Widening
Span	12'-0" Clear Span
Roadway	26'-0" ft Rail
Load Frequency	CF (130) 51
Skew	None
Wearing Surface	Bituminous Roadmix
Approach Slabs	None
Alignment	Rt Curve-Rr & Fwd.

GENERAL PLAN  
 BRIDGE NO: NOB-564-0480  
 NOBLE CO.  
 STA. 253+39  
 253+53

Design	Drawn	Checked	Review	Date	Revised
DEH	DEH	L.M.			