

STATE OF OHIO DEPARTMENT OF TRANSPORTATION

PIC-23-17.37

HARRISON TOWNSHIP
VILLAGE OF SOUTH BLOOMFIELD
PICKAWAY COUNTY

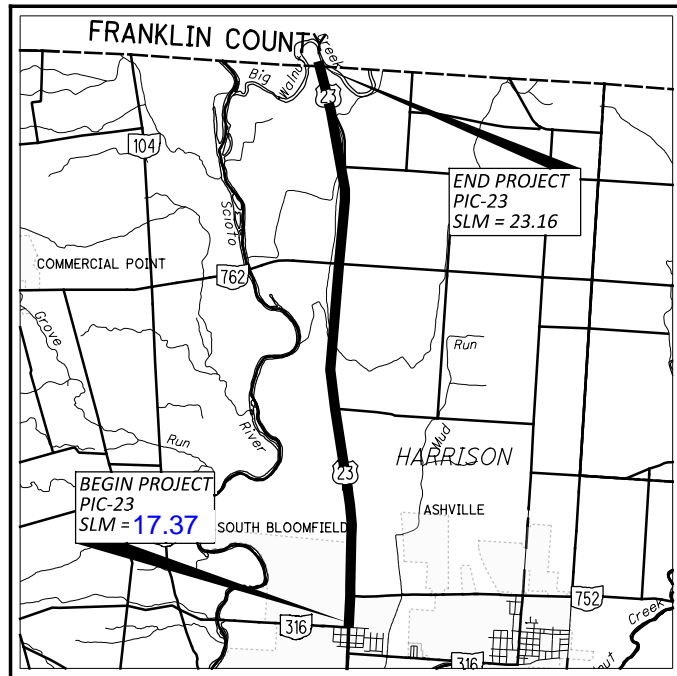
FEDERAL PROJECT NUMBER

E200 (897)

RAILROAD INVOLVEMENT

NONE

PROJECT DESCRIPTION



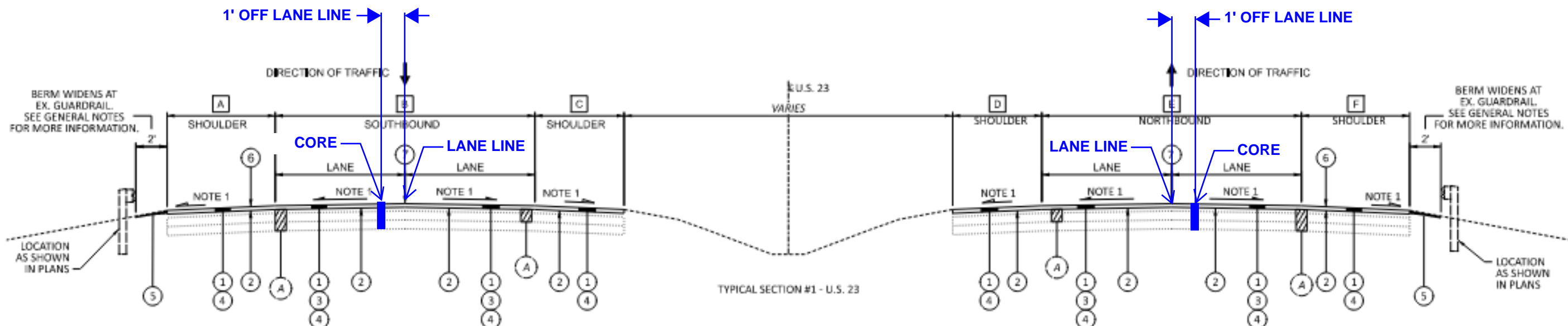
LOCATION MAP

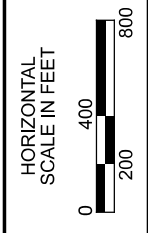
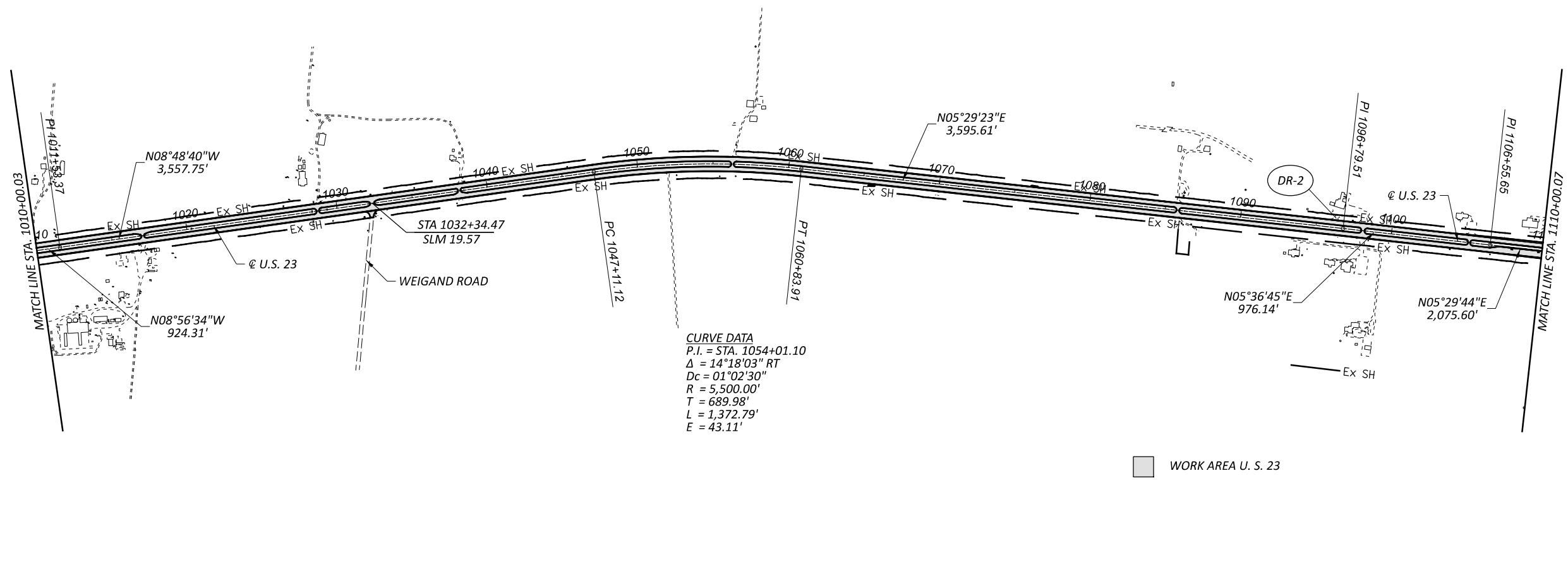
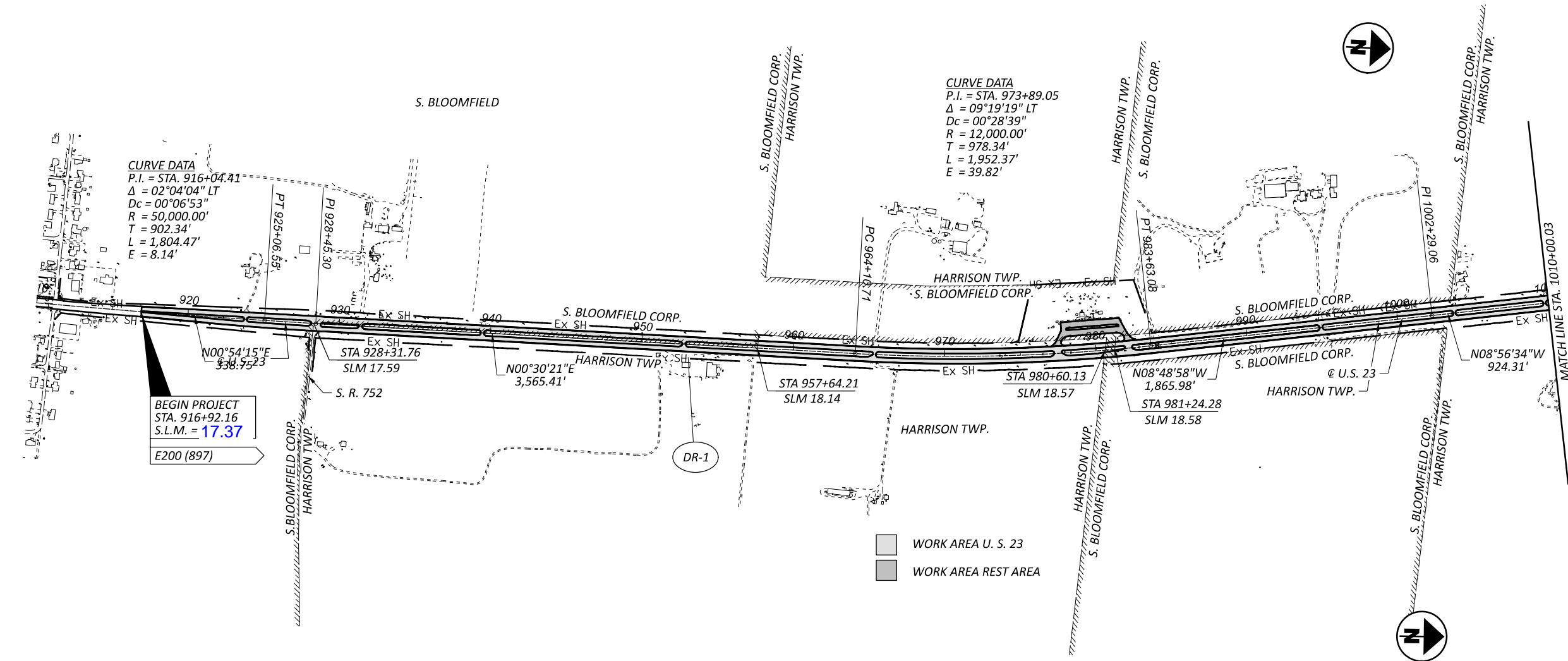
LATITUDE: 39°45'42" LONGITUDE: 82°59'26"

INDEX OF SHEETS:

TITLE 1
SCHEMATIC 2-3
CORE PLAN 4-19

LOCATION		CORE #	
SLM	STA	NB	SB
17.37	917+13.60	1	8
18.37	969+93.60	2	9
19.37	1022+73.60	3	10
20.37	1075+53.60	4	11
21.37	1128+33.60	5	12
22.37	1181+13.60	6	13
23.16	1222+84.80	7	14





SCHEMATIC PLAN

DESIGN AGENCY



DESIGNER

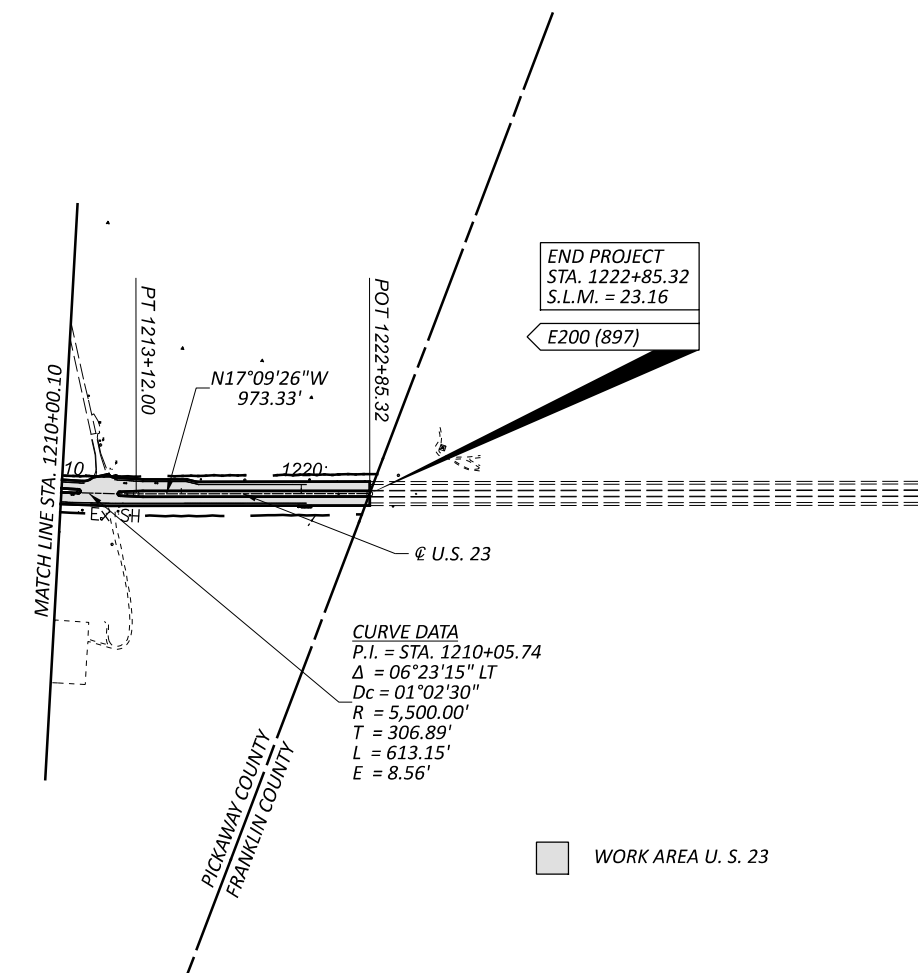
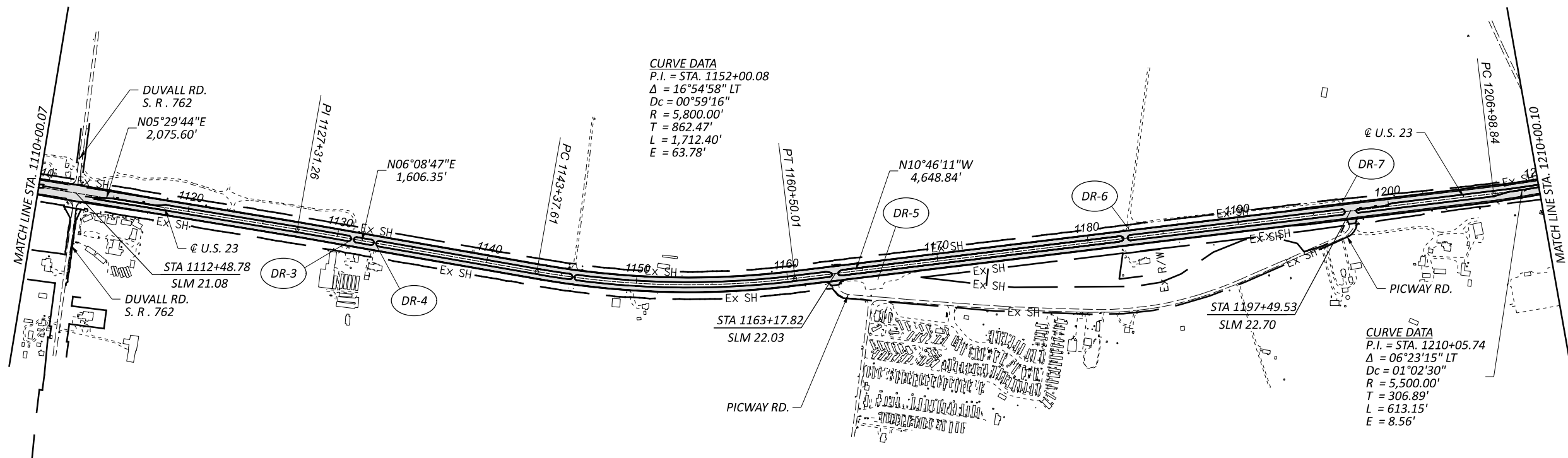
MAK

REVIEWER

DKR MM-DD-YY

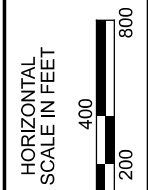
PROJECT ID

112877



LEGEND				
SHEET	MARK	DESCRIPTION	ROUTE	SLM
	DR-1	REMOVE CROSSOVER AND RECONFIGURE DRIVE	US-23	18.05
	DR-2	REMOVE DRIVE	US-23	20.77
	DR-3	RELOCATE CROSSOVER	US-23	21.43
	DR-4	REMOVE CROSSOVER	US-23	21.46
	DR-5	REMOVE PAVEMENT	US-23	22.06
	DR-6	REMOVE DRIVE	US-23	22.42
	DR-7	REMOVE DRIVE AND REGRADE	US-23	22.70

SPLIT	CATEGORY	PLAN SPLIT CODE	DESCRIPTION
1	NHS	01/NHS/PV	PIC-23 FROM SLM 13.77 TO 23.16

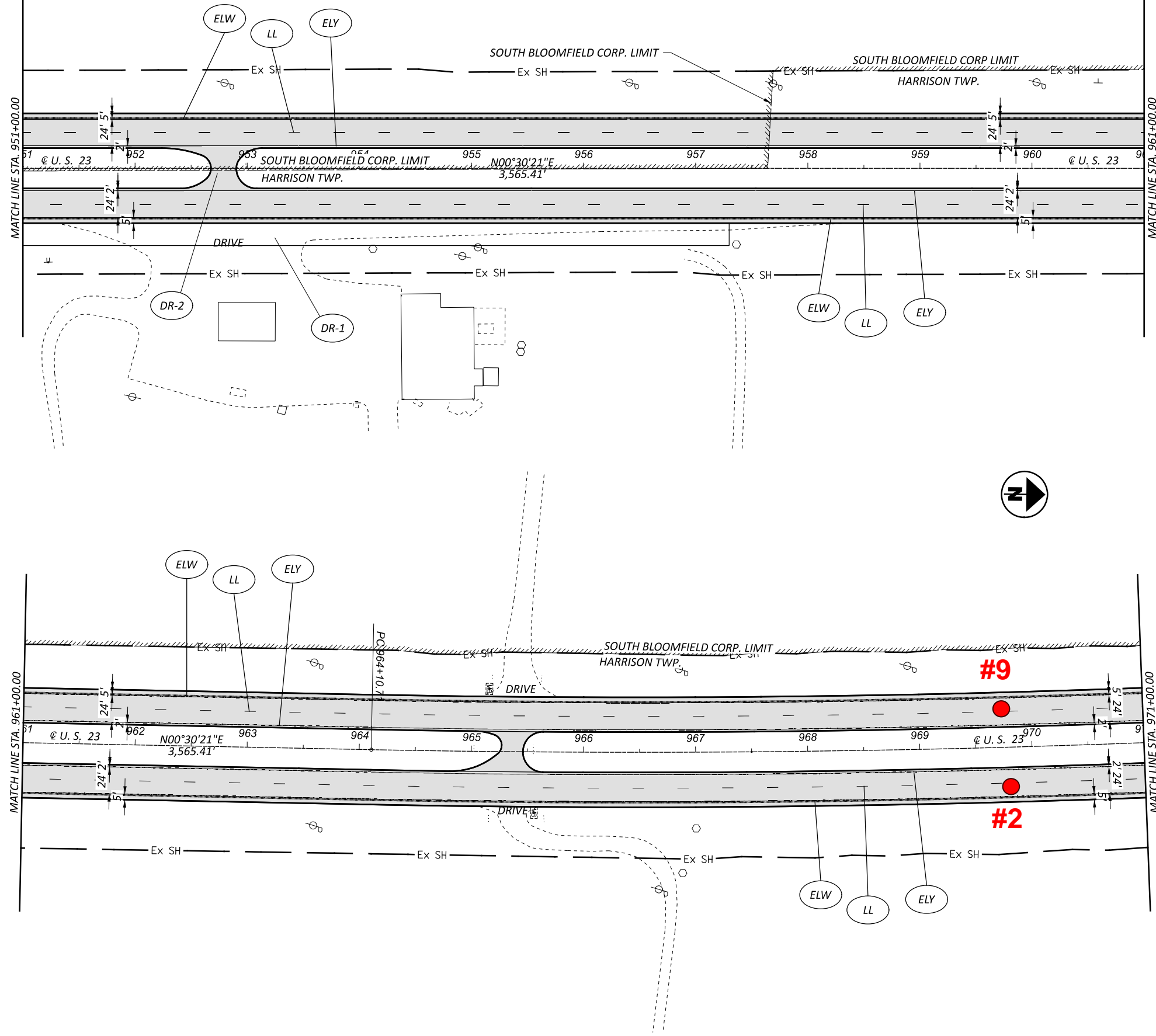


SCHEMATIC PLAN

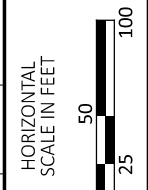
DESIGN AGENCY



DESIGNER
MAK
 REVIEWER
 DKR MM-DD-YY
 PROJECT ID
 112877



REF.	DIRECTION	BEGIN STATION	END STATION	TYPICAL	AVG PAVEMENT WIDTH						TOTALS CARRIED TO PLAN SUB SUMMARY	
					A	B	C	D	E	F		
US-23	SB	951+00	971+00	1	5'	24'	2'	2'	24'	5'		
US-23	NB	951+00	971+00	1								
US-23	MEDIAN CROSSOVER			2								
					PAVEMENT PLANNING, ASPHALT CONCRETE (1.50")	SQ YD	6,889	6,889	128	11		
					NON-TRACKING TACK COAT	GAL	964	964	11			
					ANTI-SEGREGATION EQUIPMENT	CU YD	222	222				
					ASPHALT CONCRETE SURFACE COURSE, 12.5MM, TYPE A (447) (1.5")	CU YD	287	287	5			
					COMPACTED AGGREGATE	CU YD						
					RUMBLE STRIPS, (ASPHALT CONCRETE)	MILE	0.38	0.38				
					VOID REDUCING ASPHALT MEMBRANE (VRAM)	FT	2,000	2,000				
					TOTALS CARRIED TO PLAN SUB SUMMARY		13,906	1,939	444	579	0.76	4,000



PAVEMENT PLAN U. S. 23
 FROM STA. 951+00 TO STA. 971+00

DESIGN AGENCY



DESIGNER

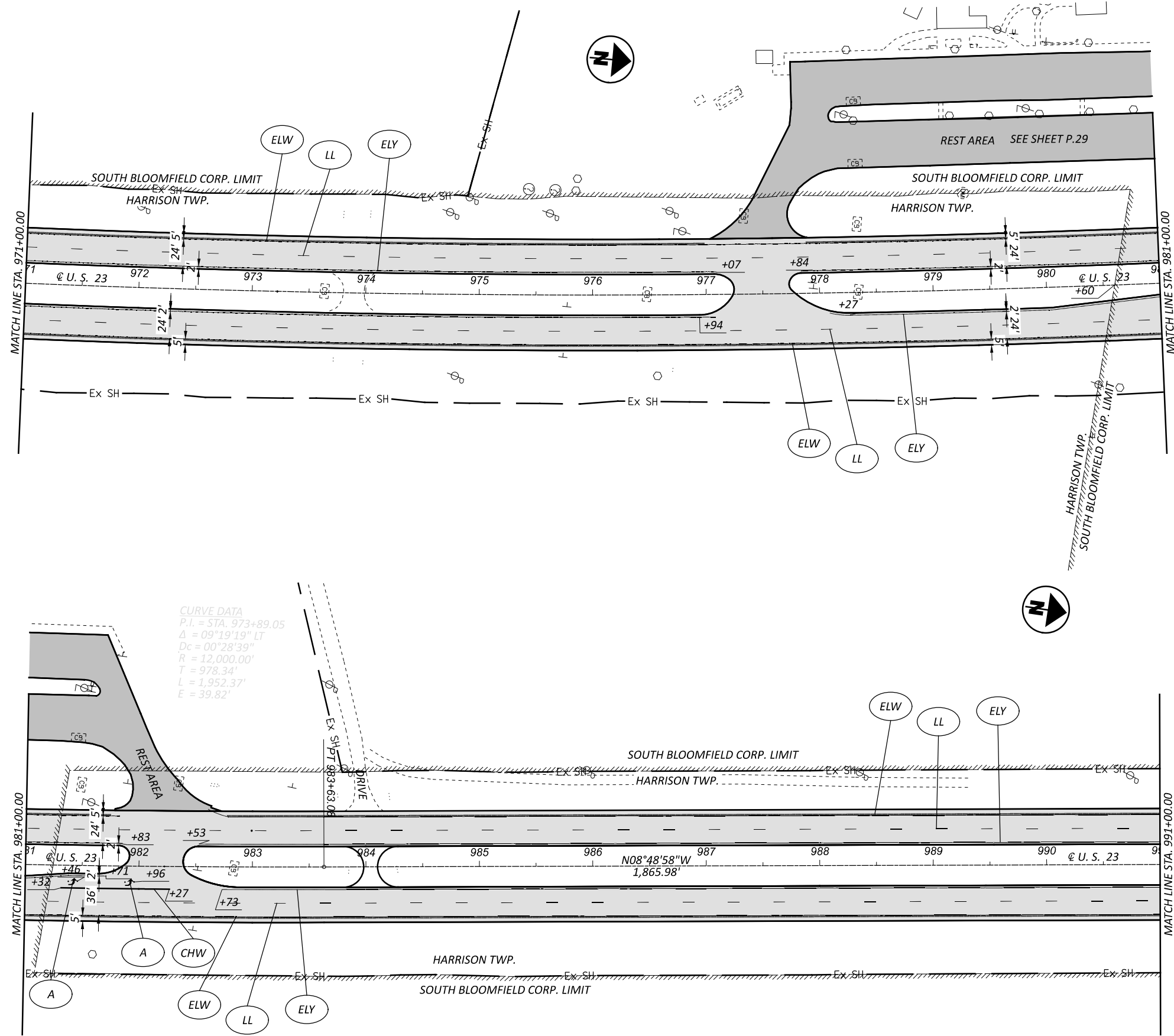
MAK

REVIEWER

DKR MM-DD-YY

PROJECT ID

112877



REF.	END STATION	BEGIN STATION	DIRECTION	AVG PAVEMENT WIDTH						TOTALS CARRIED TO PLAN SUB SUMMARY						
				A	B	C	D	E	F							
US-23	991+00	971+00	SB	5'	24'	2'	2'	24'	5'	6,889	254	407	442	617	618	872
US-23	991+00	971+00	NB	5'	24'	2'	2'	24'	5'	6,889	254	407	442	617	618	872
US-23	MEDIAN CROSSOVER	MEDIAN CROSSOVER								263						
US-23	MEDIAN CROSSOVER	MEDIAN CROSSOVER								373						
				TOTALS CARRIED TO PLAN SUB SUMMARY						14,414	1,982	444	601	0.76	4,000	

PAVEMENT PLAN U. S. 23
FROM STA. 971+00 TO STA. 991+00

HORIZONTAL SCALE IN FEET
0 25 50 100

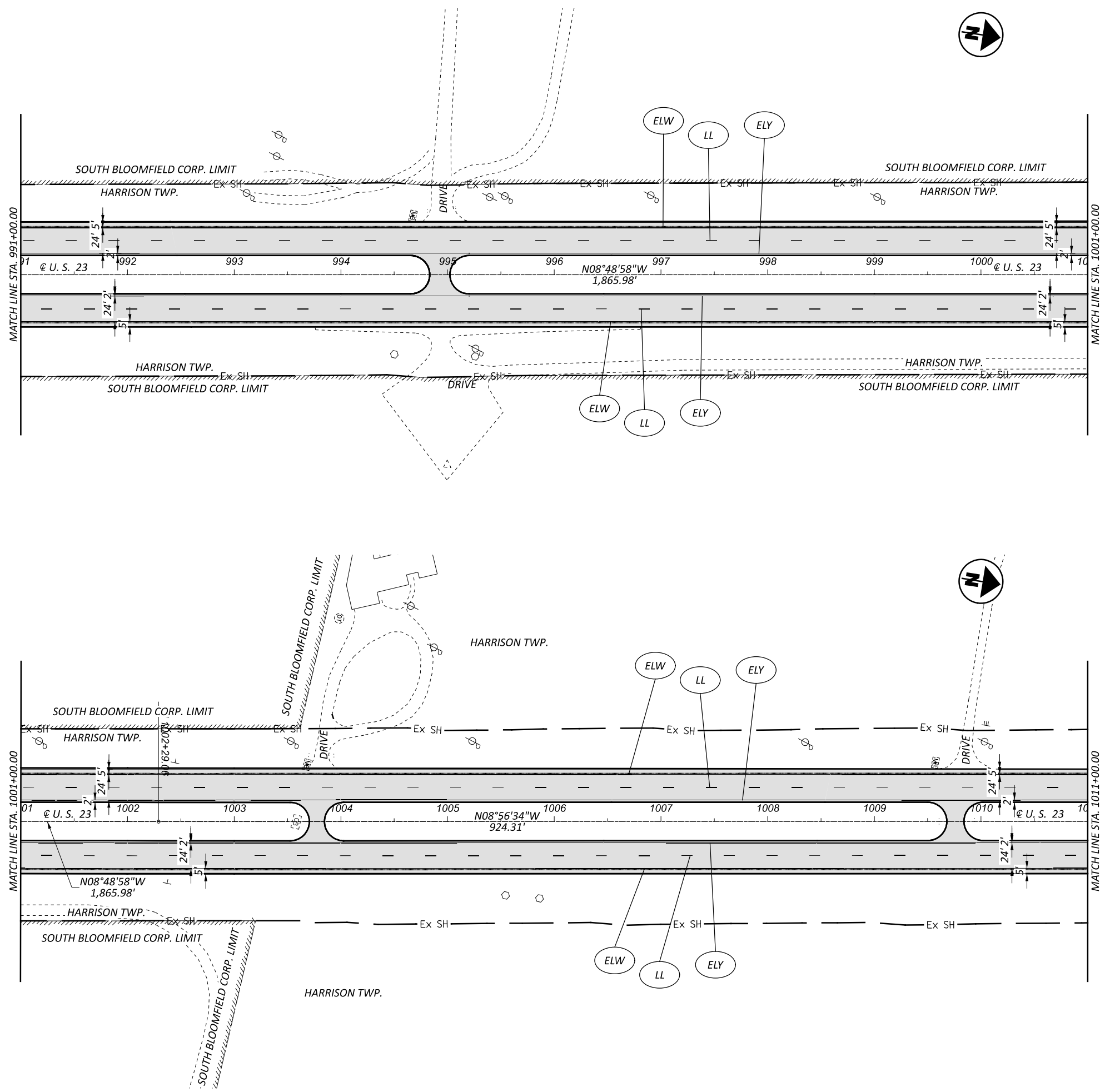
DESIGN AGENCY:

DESIGNER: **MAK**

REVIEWER: **DKR MM-DD-YY**

PROJECT ID: **112877**

7



REF.	DIRECTION	BEGIN STATION	END STATION	TYPICAL	AVG PAVEMENT WIDTH						SQYD	GAL	CUYD	CUYD	MILE	FT
					A	B	C	D	E	F						
US-23	SB	991+00	1011+00	1	5'	24'	2'	2'	24'	5'	6,889	964	287	0.38	2,000	
US-23	NB	991+00	1011+00	1							6,889	964	287	0.38	2,000	
US-23		MEDIAN CROSSOVER		2							111	9	5			
US-23		MEDIAN CROSSOVER		2							111	9	5			
US-23		MEDIAN CROSSOVER		2							111	9	5			
TOTALS CARRIED TO PLAN SUB SUMMARY																
											14,111	1,955	444	589	0.76	4,000

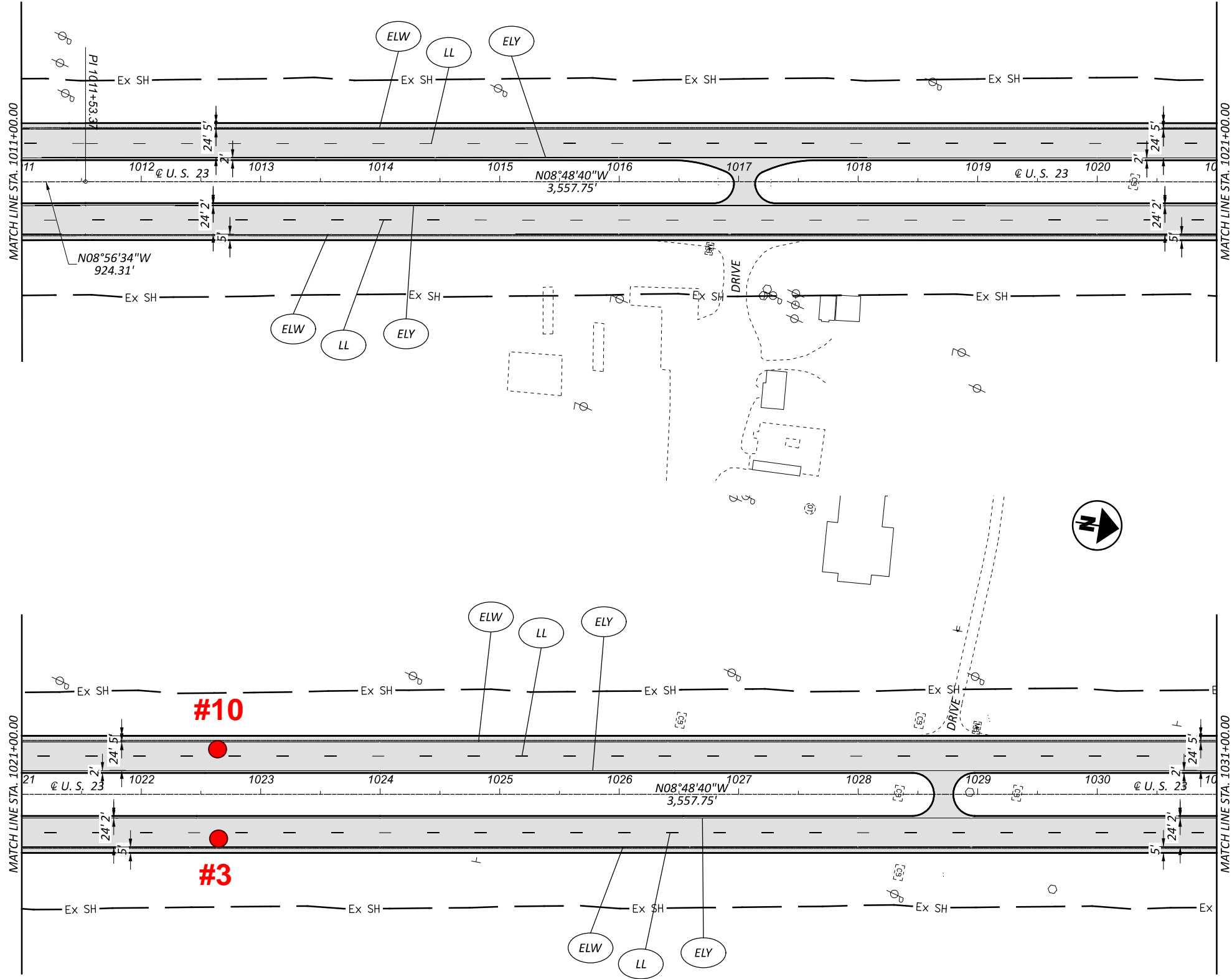
PAVEMENT PLAN U. S. 23
FROM STA. 991+00 TO STA. 1011+00

DESIGN AGENCY

 DESIGNER: **MAK**
 REVIEWER: **DKR MM-DD-YY**
 PROJECT ID: **112877**

HORIZONTAL SCALE IN FEET


8

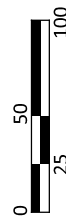


REF.	DIRECTION	BEGIN STATION	END STATION	TYPICAL	AVG PAVEMENT WIDTH						TOTALS CARRIED TO PLAN SUB SUMMARY
					A	B	C	D	E	F	
US-23 SB	1011+00	1031+00	1		5'	24'	2'	2'	24'	5'	
US-23 NB	1011+00	1031+00	1								
US-23	MEDIAN CROSSOVER		2								
US-23	MEDIAN CROSSOVER		2								
TOTALS CARRIED TO PLAN SUB SUMMARY					14,024	1,948	585	444	4,000	0.76	

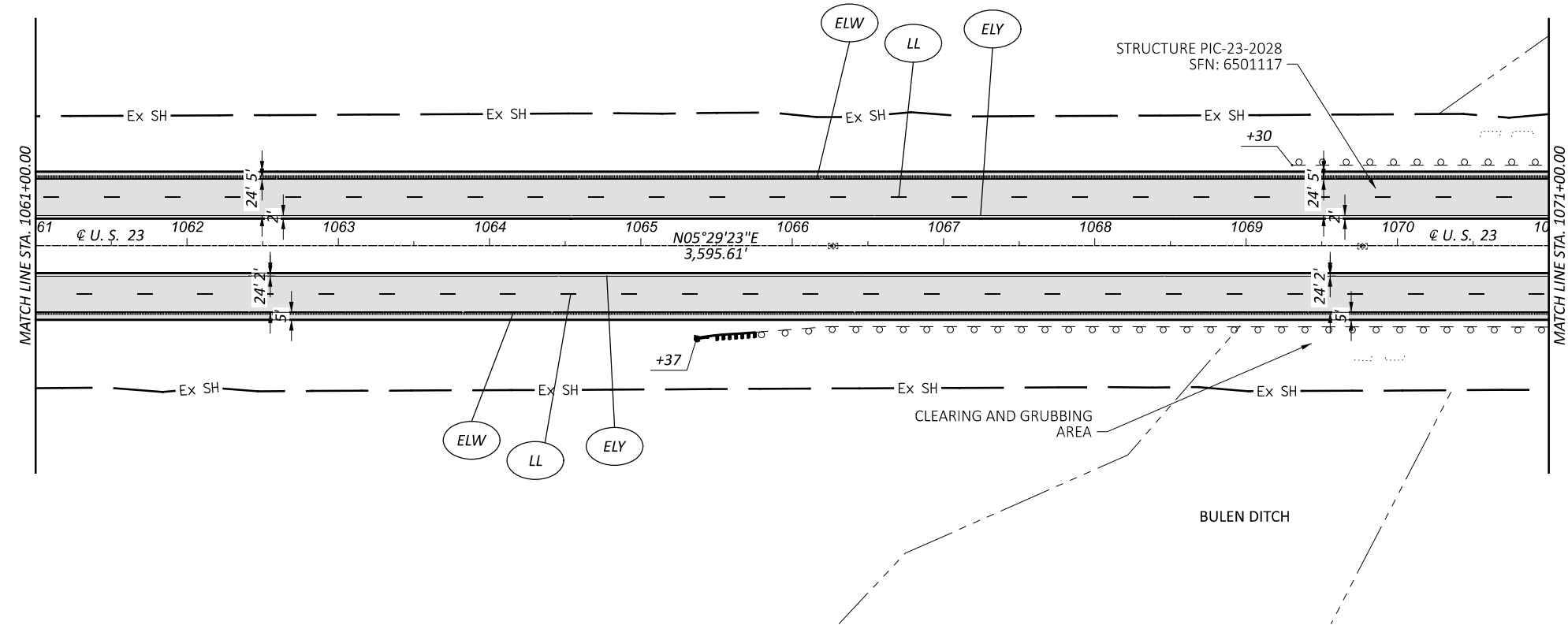
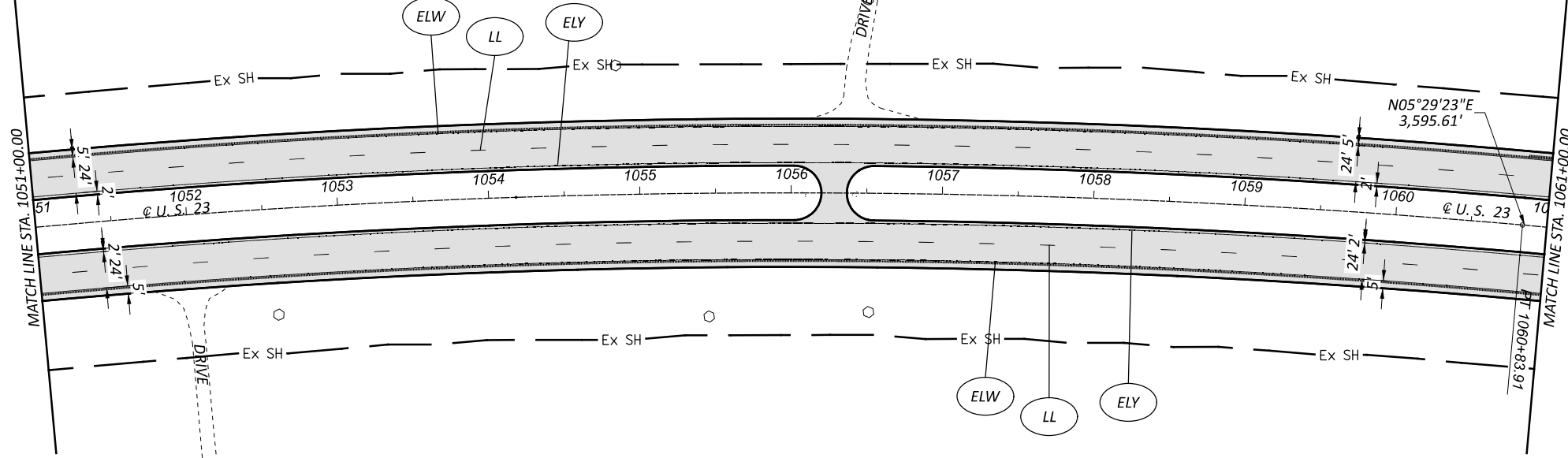
254	PAVEMENT PLANING, ASPHALT CONCRETE (1.50")	SQ YD	6,889	6,889	135	111
407	NON-TRACKING TACK COAT	GAL	964	964	11	9
442	ASPHALT CONCRETE SURFACE COURSE, 12.5MM, TYPE A (447) (1.5")	CU YD	287	287	6	5
442	ANTI-SEGREGATION EQUIPMENT	CU YD	222	222		
617	COMPACTED AGGREGATE	CU YD				
618	RUMBLE STRIPS, (ASPHALT CONCRETE)	MILE	0.38	0.38		
872	VOID REDUCING ASPHALT MEMBRANE (VRAM)	FT	2,000	2,000		

PAVEMENT PLAN U. S. 23
 FROM STA. 1011+00 TO STA. 1031+00

DESIGN AGENCY

 DESIGNER
MAK
 REVIEWER
 DKR MM-DD-YY
 PROJECT ID
 112877

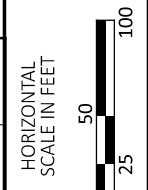
HORIZONTAL SCALE IN FEET


9



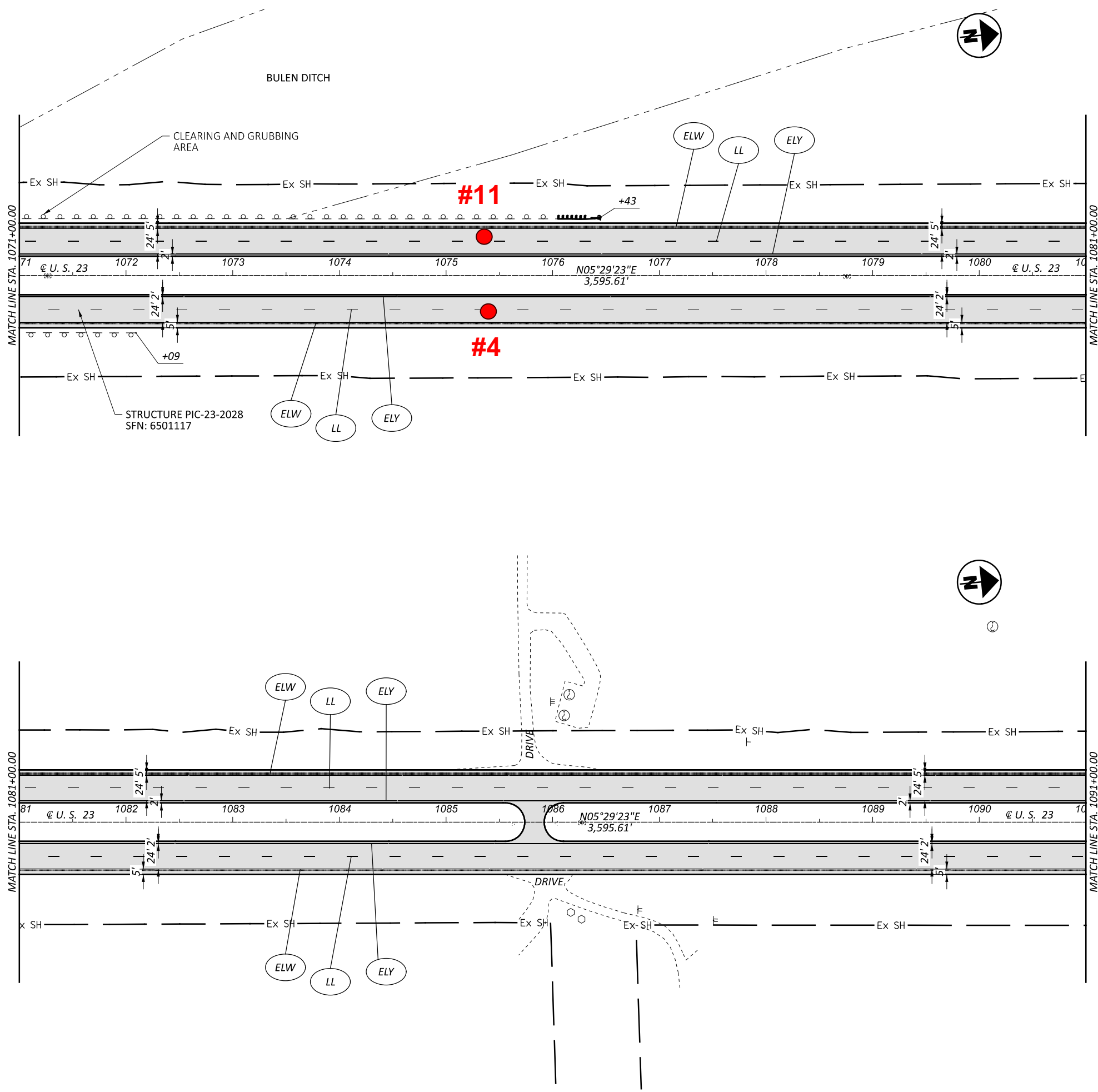
REF.	US-23 SB	US-23 NB	US-23	TYPICAL	AVG PAVEMENT WIDTH						TOTALS CARRIED TO PLAN SUB SUMMARY						
					A	B	C	D	E	F							
	FT	FT	FT	FT	FT	FT	FT	FT	FT	FT							
	5'	24'	2'	2'	24'	2'	2'	24'	5'								
US-23 SB	6,889	964	964	111	9	5	287	287	2,000	2,000	4,000						
US-23 NB	6,889	964	964	111	9	5	287	287	2,000	2,000	4,000						
US-23																	
US-23 SB																	
US-23 NB																	
TOTALS CARRIED TO PLAN SUB SUMMARY											13,889	1,937	444	579	36	0.76	4,000

PAVEMENT PLAN U. S. 23
 FROM STA. 1051+00 TO STA. 1071+00



DESIGN AGENCY

DESIGNER: MAK
 REVIEWER: DKR
 PROJECT ID: 112877



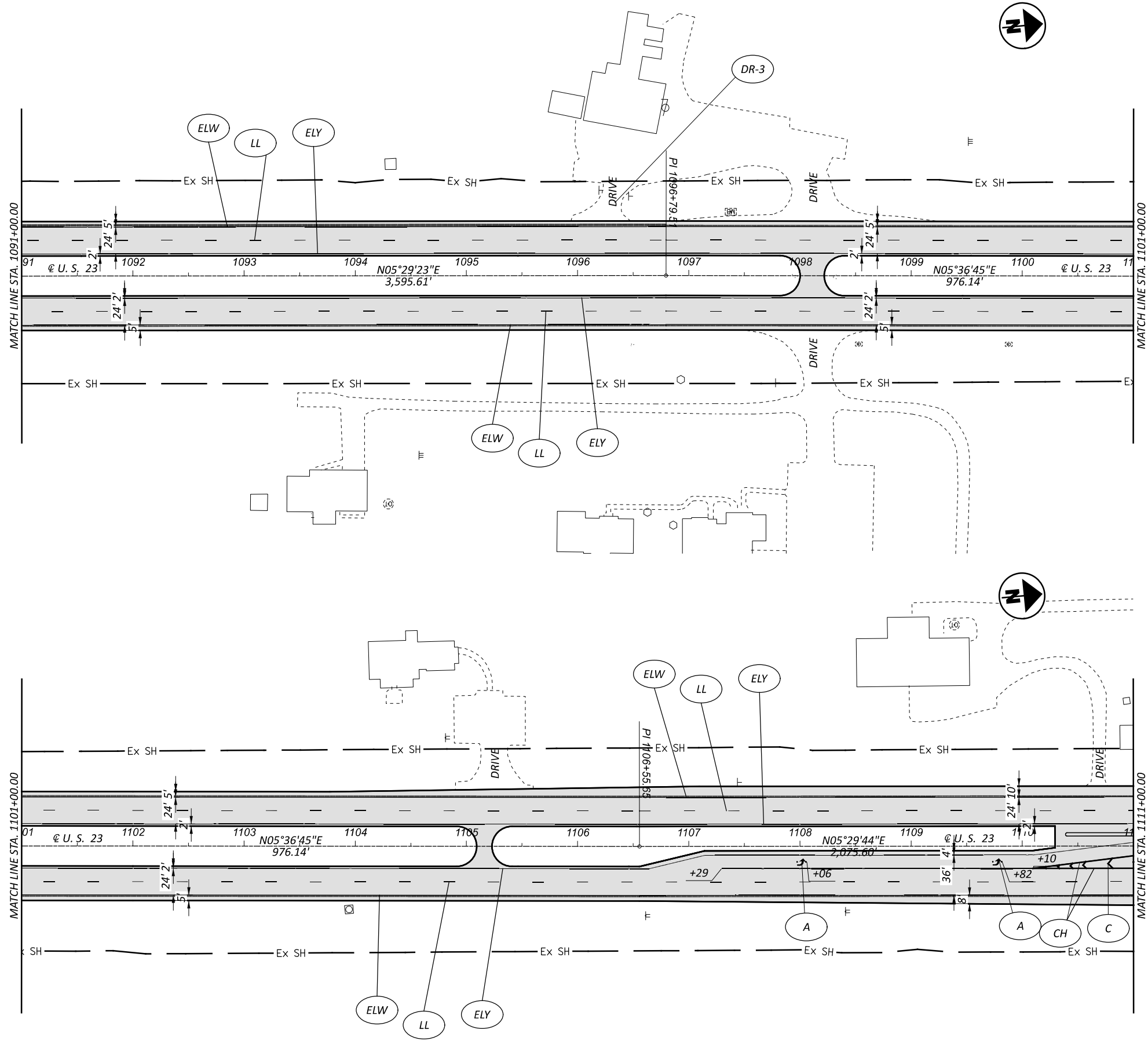
REF.	DIRECTION	BEGIN STATION	END STATION	TYPICAL	AVG PAVEMENT WIDTH						TOTALS CARRIED TO PLAN SUB SUMMARY
					A	B	C	D	E	F	
US-23 SB		1071+00	1091+00	1	5'	24'	2'	2'	24'	5'	13889
US-23 NB		1071+00	1091+00	1							1937
US-23	MEDIAN CROSSOVER			2							444
US-23 SB	GUARDRAIL										579
US-23 NB	GUARDRAIL										32
											0.76
											4,000

PAVEMENT PLAN U. S. 23
 FROM STA. 1071+00 TO STA. 1091+00

DESIGN AGENCY

 DESIGNER
MAK
 REVIEWER
 DKR MM-DD-YY
 PROJECT ID
 112877
 12

HORIZONTAL SCALE IN FEET
 0 25 50 100



REF.	DIRECTION	BEGIN STATION	END STATION	TYPICAL	AVG PAVEMENT WIDTH						SQ YD	GAL	CU YD	CU YD	MILE	FT
					A	B	C	D	E	F						
US-23	SB	1091+00	1111+00	1	5'	24'	2'	2'	24'	5'	6,889	964	222	287	0.38	2,000
US-23	NB	1091+00	1111+00	1							6,889	964	222	287	0.38	2,000
US-23		MEDIAN CROSSOVER		2							111	9		5		
US-23		MEDIAN CROSSOVER		2							111	9		5		
US-23		MEDIAN CROSSOVER		2							901	77		38		
TOTALS CARRIED TO PLAN SUB SUMMARY											14,901	2,023	444	622	0.76	4,000

PAVEMENT PLAN U. S. 23
 FROM STA. 1091+00 TO STA. 1111+00

DESIGN AGENCY

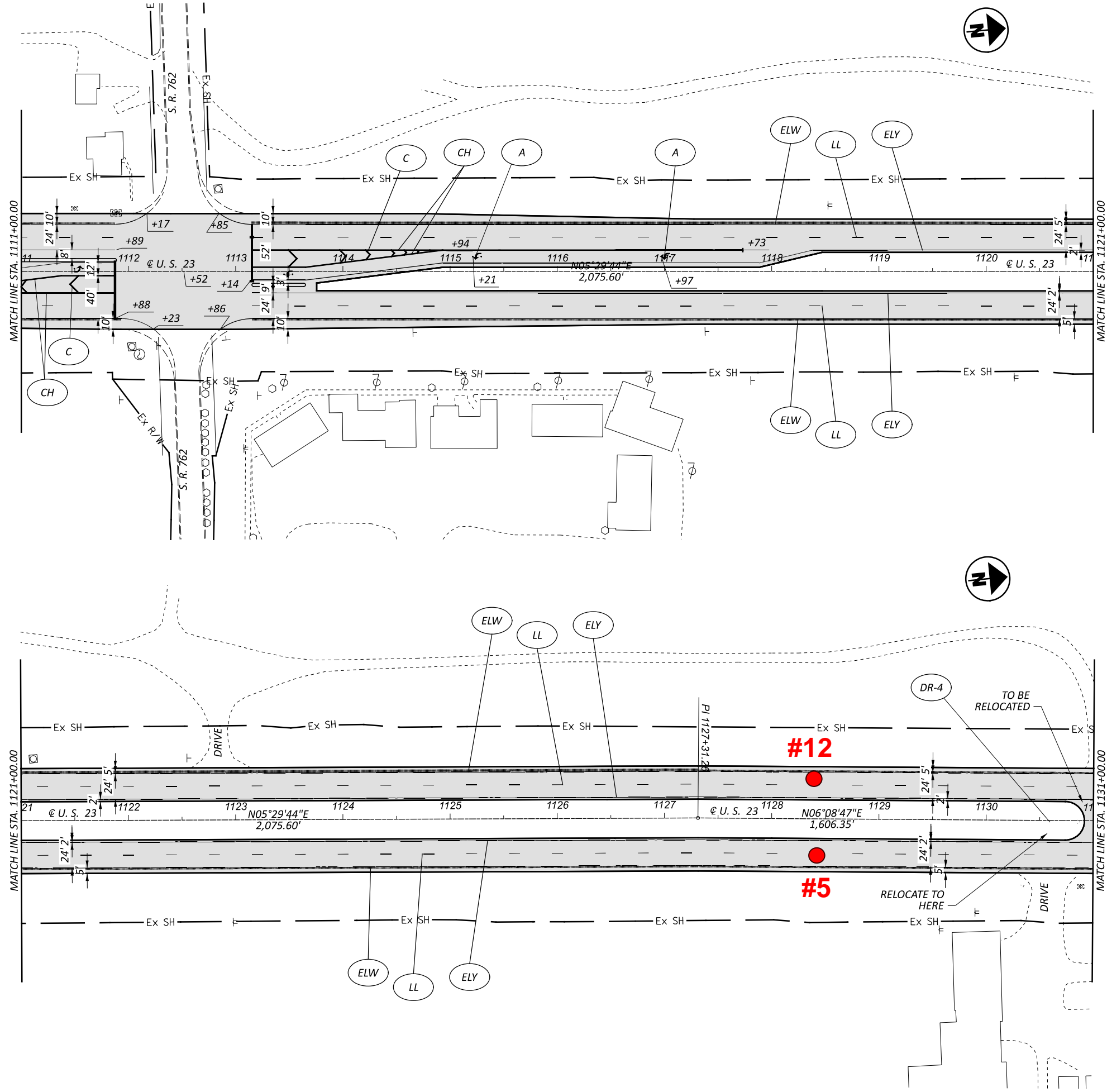
DESIGNER: **MAK**

REVIEWER: **DKR MM-DD-YY**

PROJECT ID: **112877**


13

HORIZONTAL SCALE IN FEET

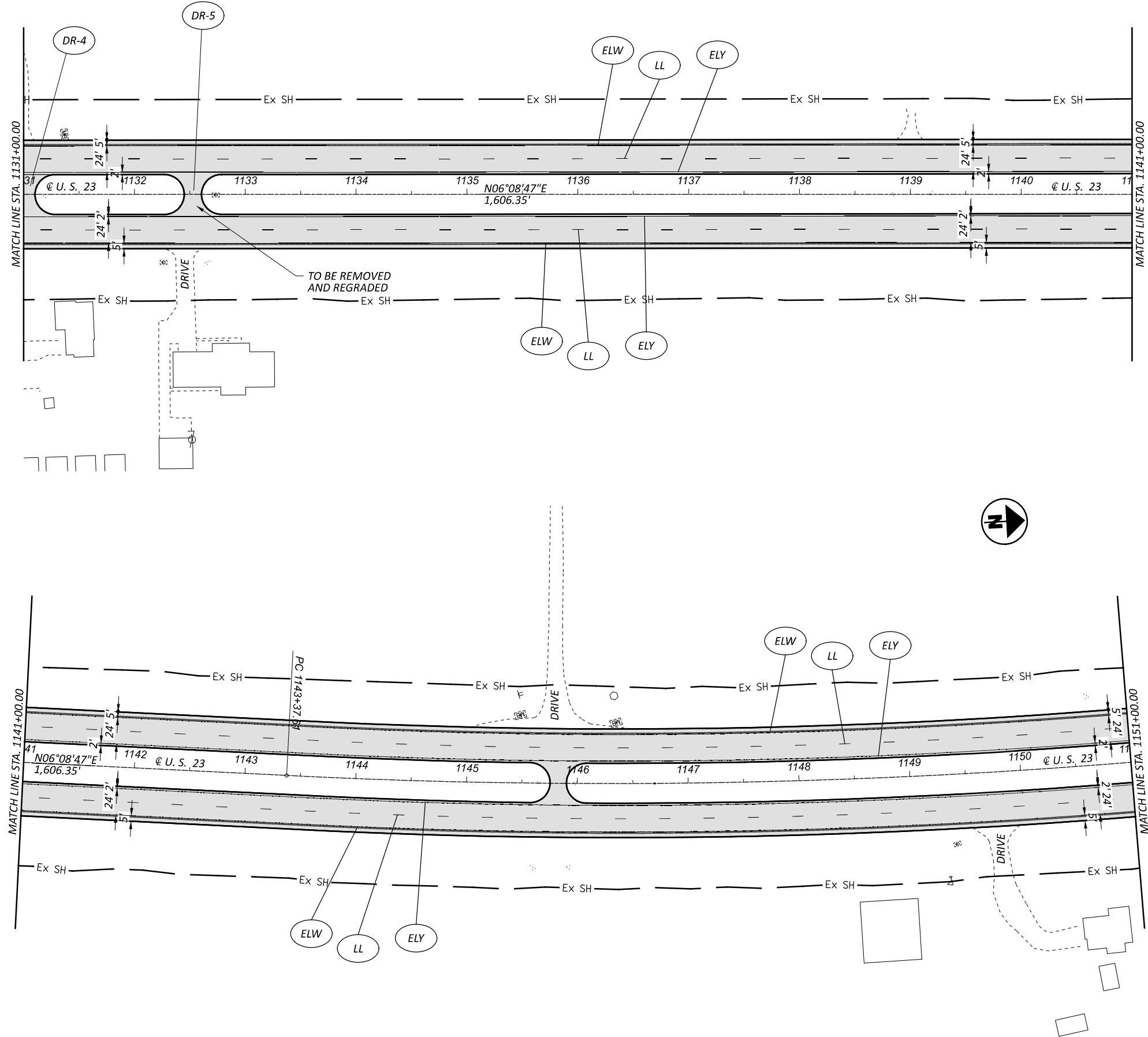


REF.	DIRECTION	BEGIN STATION	END STATION	TYPICAL	AVG PAVEMENT WIDTH						TOTALS CARRIED TO PLAN SUB SUMMARY					
					A	B	C	D	E	F						
US-23	SB	1111+00	1131+00	1	5'	24'	2'	2'	24'	5'	6,889	2,089	4,000			
US-23	NB	1111+00	1131+00	1							6,889	2,089	4,000			
US-23	MEDIAN CROSSOVER			2							1,890	444	653			
TOTALS CARRIED TO PLAN SUB SUMMARY											15,668	2,089	444	653	0.76	4,000

PAVEMENT PLAN U. S. 23
 FROM STA. 1111+00 TO STA. 1131+00

DESIGN AGENCY

 DESIGNER: MAK
 REVIEWER: DKR MM-DD-YY
 PROJECT ID: 112877
 14

HORIZONTAL SCALE IN FEET
 0 25 50 100



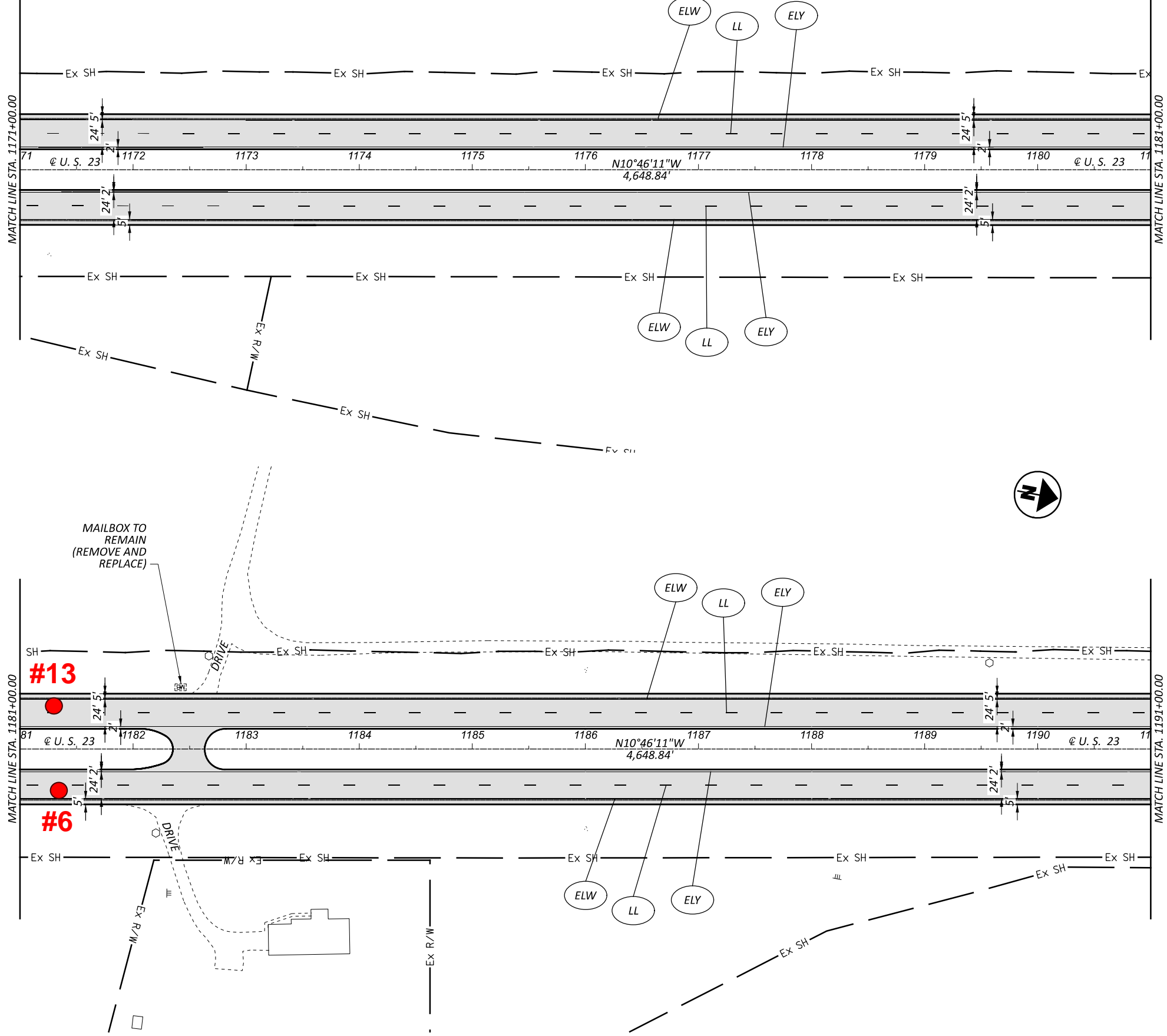
REF.	DIRECTION	BEGIN STATION	END STATION	TYPICAL	AVG PAVEMENT WIDTH						SQ.YD	GAL	CU.YD	CU.YD	MILE	FT
					A	B	C	D	E	F						
US-23	SB	1131+00	1151+00	1	5'	24'	2'	2'	24'	5'	6,889	222	287	0.38	872	
US-23	NB	1131+00	1151+00	1							6,889	222	287	0.38	872	
US-23			MEDIAN CROSSOVER	2							111	5				
US-23	SB		GUARDRAIL									23				
TOTALS CARRIED TO PLAN SUB SUMMARY											13,889	444	579	0.76	4,000	

PAVEMENT PLAN U. S. 23
 FROM STA. 1131+00 TO STA. 1151+00

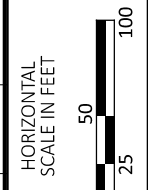
DESIGN AGENCY

 DESIGNER: **MAK**
 REVIEWER: **DKR MM-DD-YY**
 PROJECT ID: **112877**
15

HORIZONTAL SCALE IN FEET
 0 25 50 100



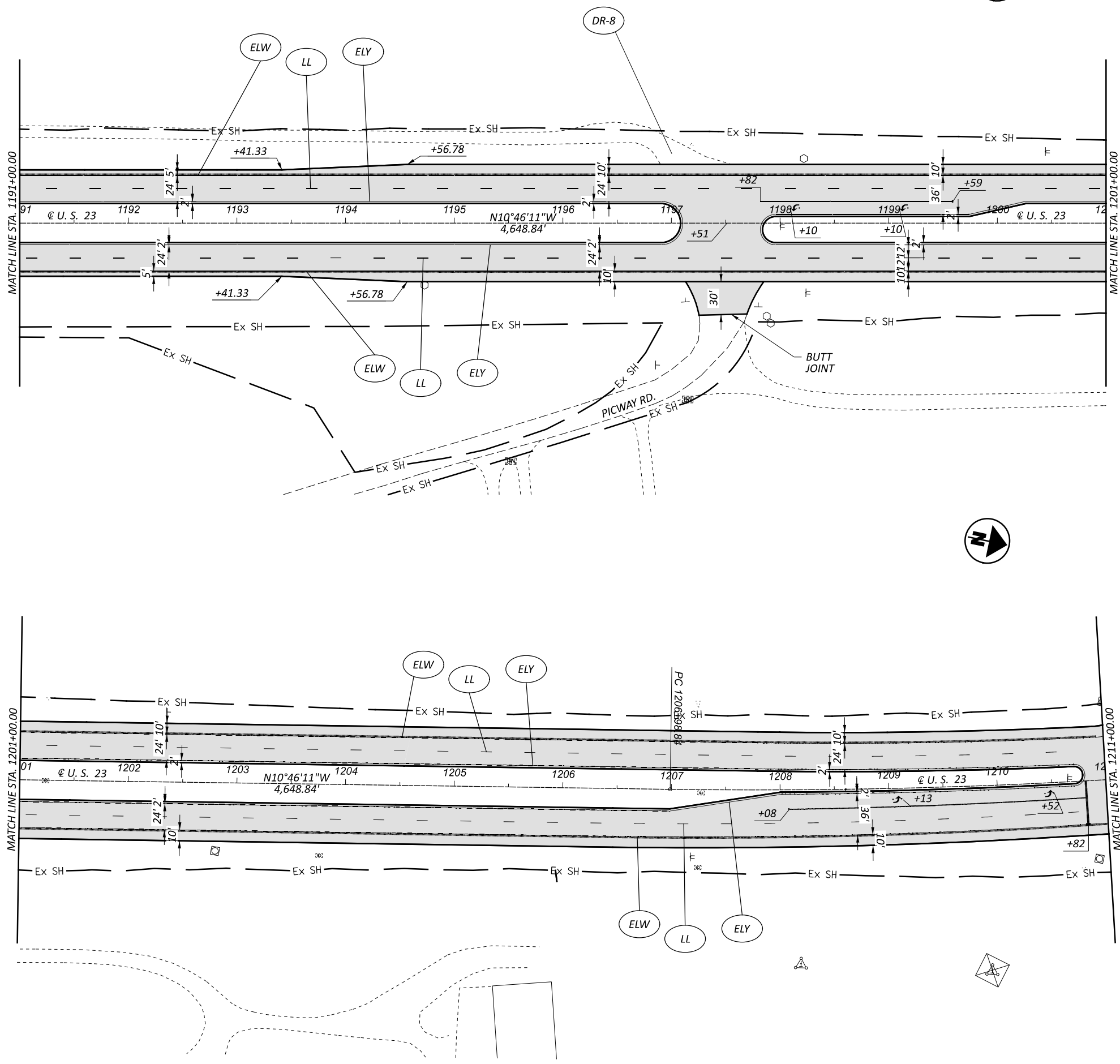
REF.	DIRECTION	BEGIN STATION	END STATION	TYPICAL	AVG PAVEMENT WIDTH						SQ YD	GAL	CU YD	CU YD	MILE	FT
					A	B	C	D	E	F						
US-23	SB	1171+00	1191+00	1	5'	24'	2'	2'	24'	5'	6,889	964	222	287	0.38	2,000
US-23	NB	1171+00	1191+00	1							6,889	964	222	287	0.38	2,000
US-23	MEDIAN CROSSOVER			2							111	9				
TOTALS CARRIED TO PLAN SUB SUMMARY																
13,889																
1,937																
444																
579																
0.76																
4,000																



PAVEMENT PLAN U. S. 23
 FROM STA. 1171+00 TO STA. 1191+00

DESIGN AGENCY

 DESIGNER: MAK
 REVIEWER: DKR
 PROJECT ID: MM-DD-YY
 112877
 17



REF.	DIRECTION	BEGIN STATION	END STATION	TYPICAL	AVG PAVEMENT WIDTH						TOTALS CARRIED TO PLAN SUB SUMMARY					
					A	B	C	D	E	F						
US-23	SB	1191+00	1193+41.33	1	5'	24'	2'									
US-23	SB	1193+41.33	1194+56.78	1	7.5'	24'	2'									
US-23	SB	1194+56.78	1211+00	1	10'		2'	24'								
US-23	NB	1191+00	1193+41.33	1			2'	24'	5'							
US-23	NB	1193+41.33	1194+56.78	1			2'	24'	7.5'							
US-23	NB	1194+56.78	1211+00	1			2'	24'	10'							
US-23		PICKWAY RD.														
US-23		MEDIAN CROSSOVER														
US-23		MEDIAN CROSSOVER														
TOTALS CARRIED TO PLAN SUB SUMMARY											17,116	2,315	446	659	0.76	4,000

PAVEMENT PLAN U. S. 23
 FROM STA. 1191+00 TO STA. 1211+00

DESIGN AGENCY

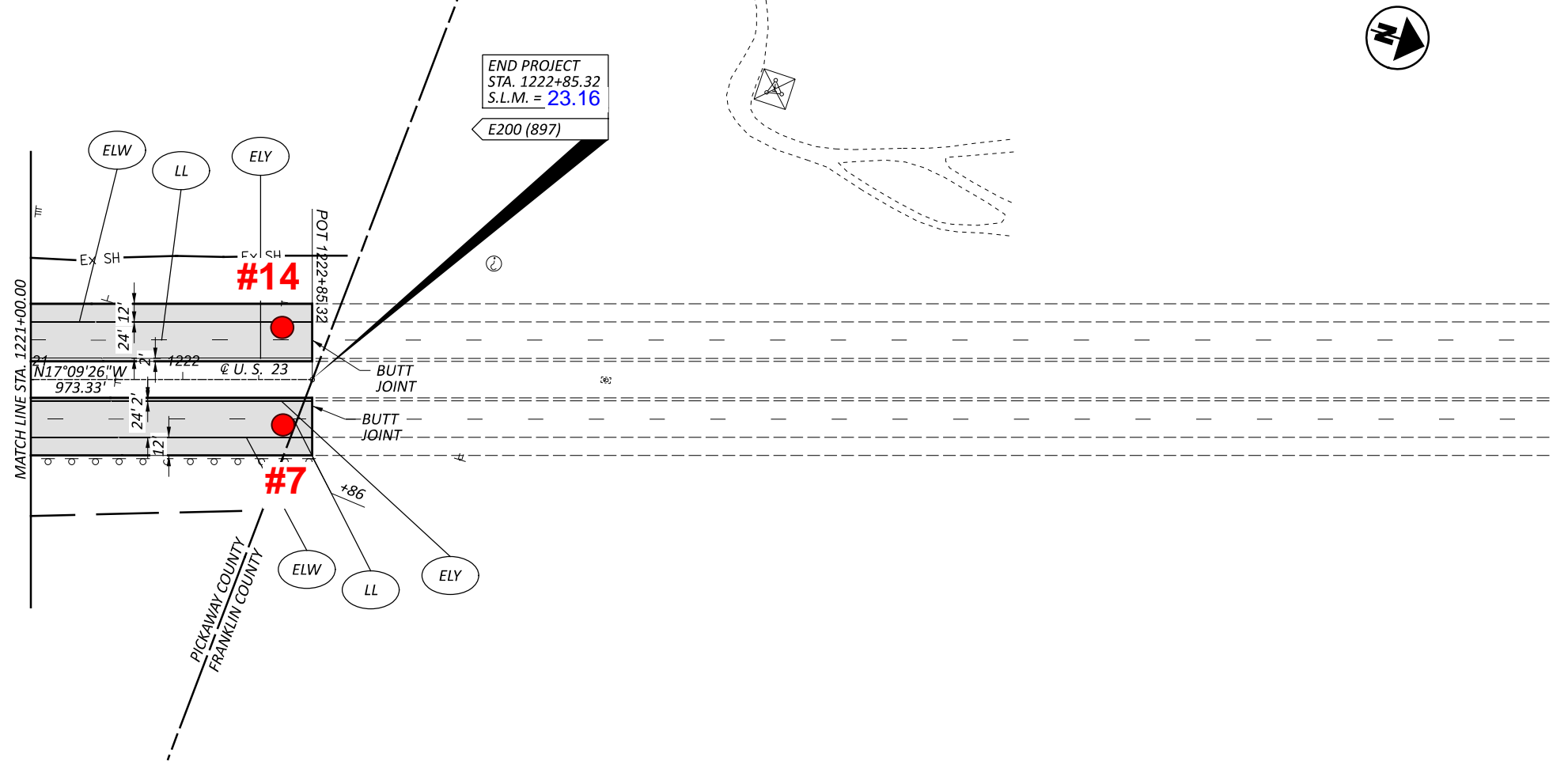
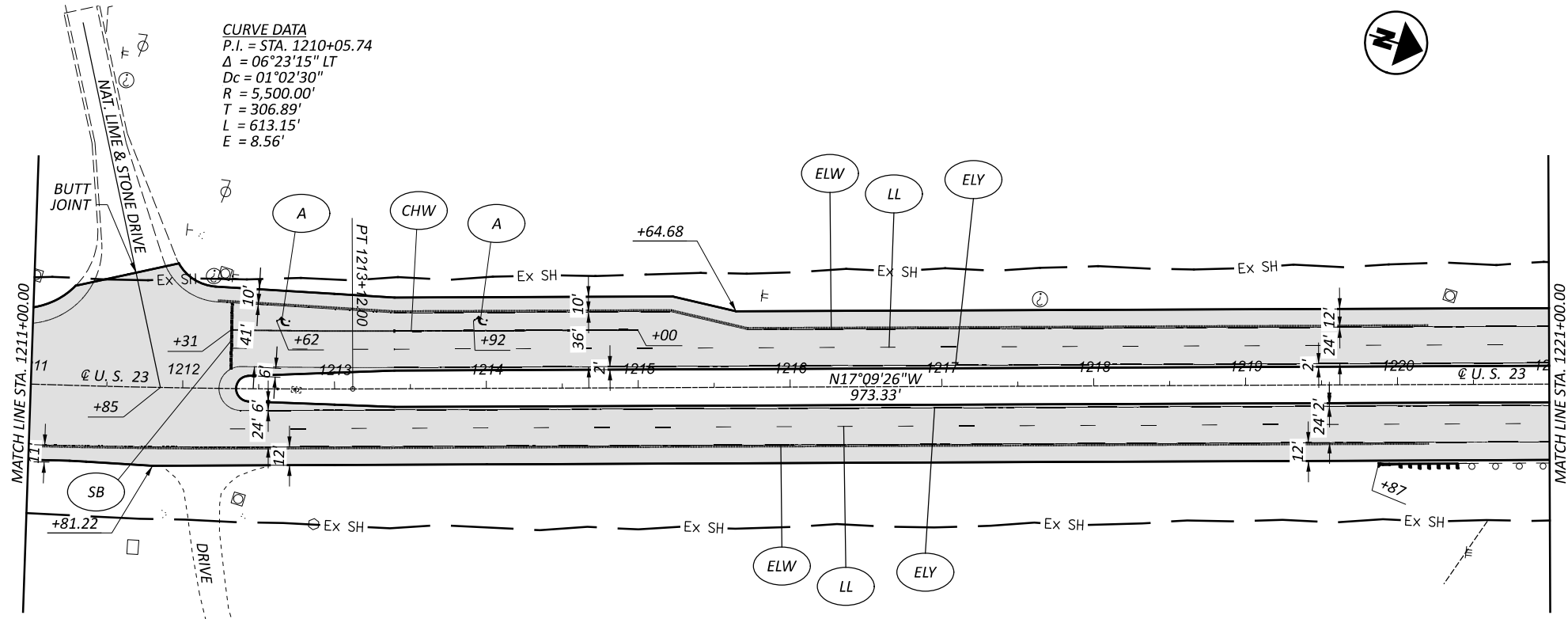
DESIGNER
MAK

REVIEWER
DKR MM-DD-YY

PROJECT ID
112877


HORIZONTAL SCALE IN FEET

18



REF.	DIRECTION	BEGIN STATION	END STATION	TYPICAL	AVG PAVEMENT WIDTH						SQ YD	GAL	CU YD	CU YD	MILE	FT	
					A	B	C	D	E	F							
US-23	SB	1211+00	1215+64.68	1	24'	24'	2'				1,342	188	56	0.09	465		
US-23	SB	1215+65	1222+85.32	1	11'	24'	2'			2,963	415	123	0.14	721			
US-23	NB	1211+00	1211+81.22	1		2'	24'	24'	11.5'	338	47	14	0.02	81			
US-23	NB	1211+81.22	1222+85.32	1		2'	24'	12'	12'	4,662	653	194	0.21	1,104			
US-23	SB	TURN LANE		2						1,308	111	5					
US-23	NB	MEDIAN CROSSOVER		2						408	35	1					
US-23	NB	GUARDRAIL															
TOTALS CARRIED TO PLAN SUB SUMMARY											11,021	1,449	264	393	15	0.46	2,371

PAVEMENT PLAN U. S. 23
 FROM STA. 1211+00 TO STA. 1222+85.32

DESIGN AGENCY

 DESIGNER: **MAK**
 REVIEWER: **DKR**
 PROJECT ID: **MM-DD-YY**
112877
19

HORIZONTAL SCALE IN FEET
 0 25 50 100