

BENCHMARK DATA				
CP #1 STA.	158+20.87,	ELEV.	670.57,	OFFSET 19.00', RT
CP #2 STA.	162+98.45,	ELEV.	642.89,	OFFSET 00.26', RT
CP #3 STA.	176+00.12,	ELEV.	599.61,	OFFSET 18.95', RT
CP #4 STA.	176+00.14,	ELEV.	600.10,	OFFSET 19.21', LT

FOR ADDITIONAL BENCHMARK INFORMATION. SEE ROADWAY PLAN SHEET **P.14/52**

NOTES
 EARTHWORK LIMITS SHOWN ARE APPROXIMATE. ACTUAL SLOPES SHALL CONFORM TO PLAN CROSS SECTIONS.

DESIGN TRAFFIC:
 2022 ADT = 2700 2022 ADTT = 162
 2042 ADT = 2700 2042 ADTT = 162
 DIRECTIONAL DISTRIBUTION = 0.63

LEGEND
 [Symbol] BORING LOCATION
 [Symbol] - ROCK CHANNEL PROTECTION, TYPE B WITH GEOTEXTILE FABRIC, 2'-6" THICK (MIN.) (TYP.)
 [Symbol] = 2'-6" CLOSURE POUR (ON BRIDGE DECK, NOT REQUIRED ON THE APPROACH SLABS) SEE NOTE 2 ON SHEET **[2/25]**.

HYDRAULIC DATA
 DRAINAGE AREA = 27.8 SQ. MILES
 Q (25) = 4890 CFS V (25) = 6.90 FT/S
 Q (100) = 7130 CFS V (100) = 8.20 FT/S
 STRUCTURE CLEARS THE 25 YEAR DESIGN HW BY 4.68 FEET.

EXISTING STRUCTURE

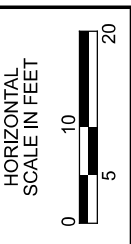
TYPE: CONTINUOUS STEEL BEAMS WITH REINFORCED CONCRETE DECK ON REINFORCED CONCRETE ABUTMENTS AND CAPPED PILE PIERS.

SPANS: 44'-0"±, 55'-0"±, 44'-0"± C/C BEARING
 ROADWAY: 36'-0"± F/F RAIL
 LOADING: CF = 130 (57)
 SKEW: 20°± RIGHT FORWARD
 WEARING SURFACE: 1 1/4" ± LATEX MODIFIED CONCRETE
 APPROACH SLABS: AS-1-54 (25' LONG)
 ALIGNMENT: TANGENT
 CROWN: 0.0156 (±) FT/FT
 STRUCTURAL FILE NUMBER: 6602223
 DATE BUILT: 1963
 DISPOSITION: REPLACEMENT

PROPOSED STRUCTURE

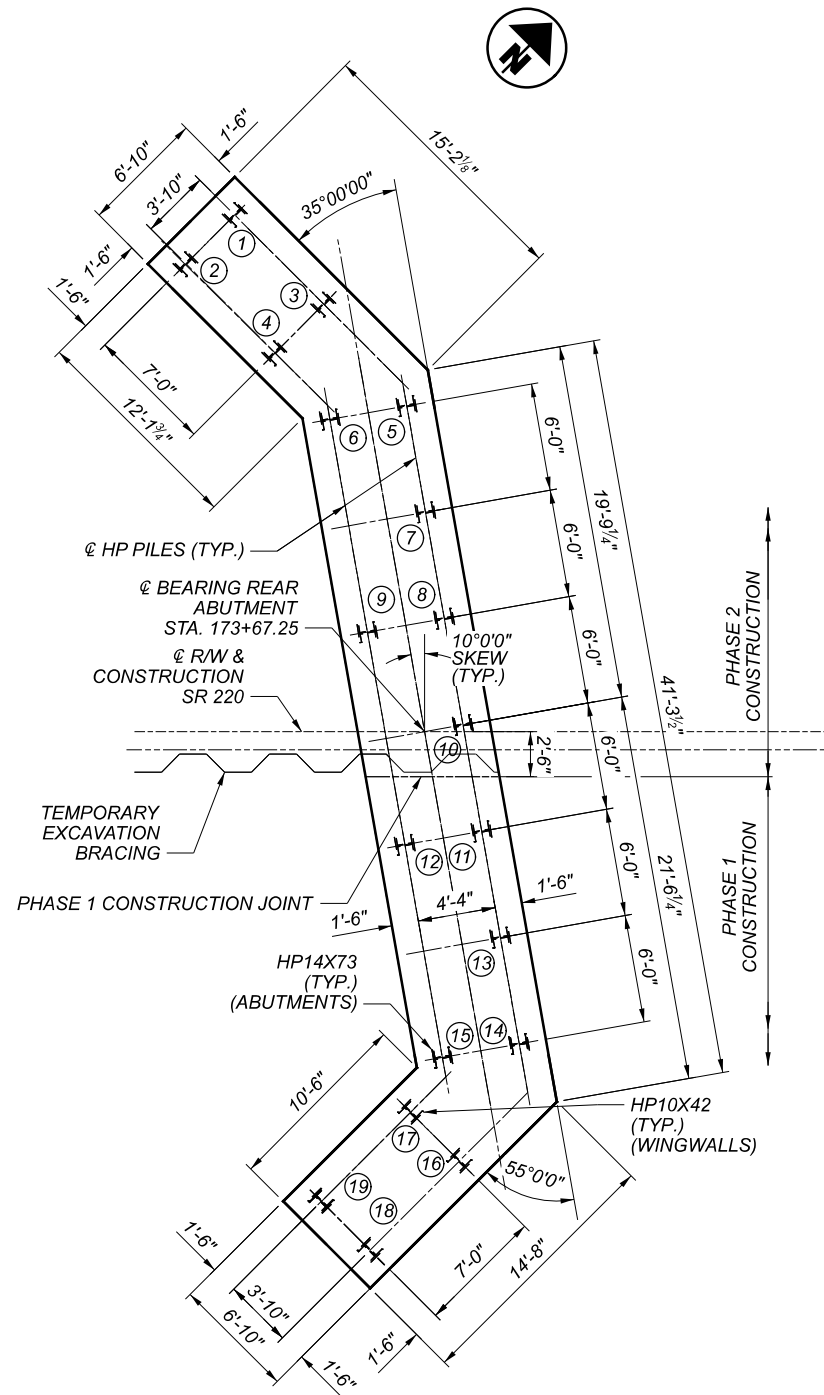
TYPE: SINGLE SPAN PRESTRESSED CONCRETE I-BEAM BRIDGE WITH COMPOSITE REINFORCED CONCRETE DECK ON NEW SEMI-INTEGRAL REINFORCED CONCRETE ABUTMENTS WITH H-PILES DRIVEN TO ROCK.

SPANS: 105'-0" C/C BEARINGS
 ROADWAY: 36'-0" F/F RAIL
 LOADING: HL93 AND 60 PSF FUTURE WEARING SURFACE
 SKEW: 10° RIGHT FORWARD
 WEARING SURFACE: 1" MONOLITHIC CONCRETE
 APPROACH SLABS: 30'-0" LONG (AS-1-15, AS-2-15 TYPE A INSTALLATION)
 ALIGNMENT: TANGENT
 CROWN: 0.016 FT/FT
 DECK AREA: 3901.68 SF
 COORDINATES: LATITUDE 39° 06' 20.39" N
 LONGITUDE 83° 03' 32.63" W

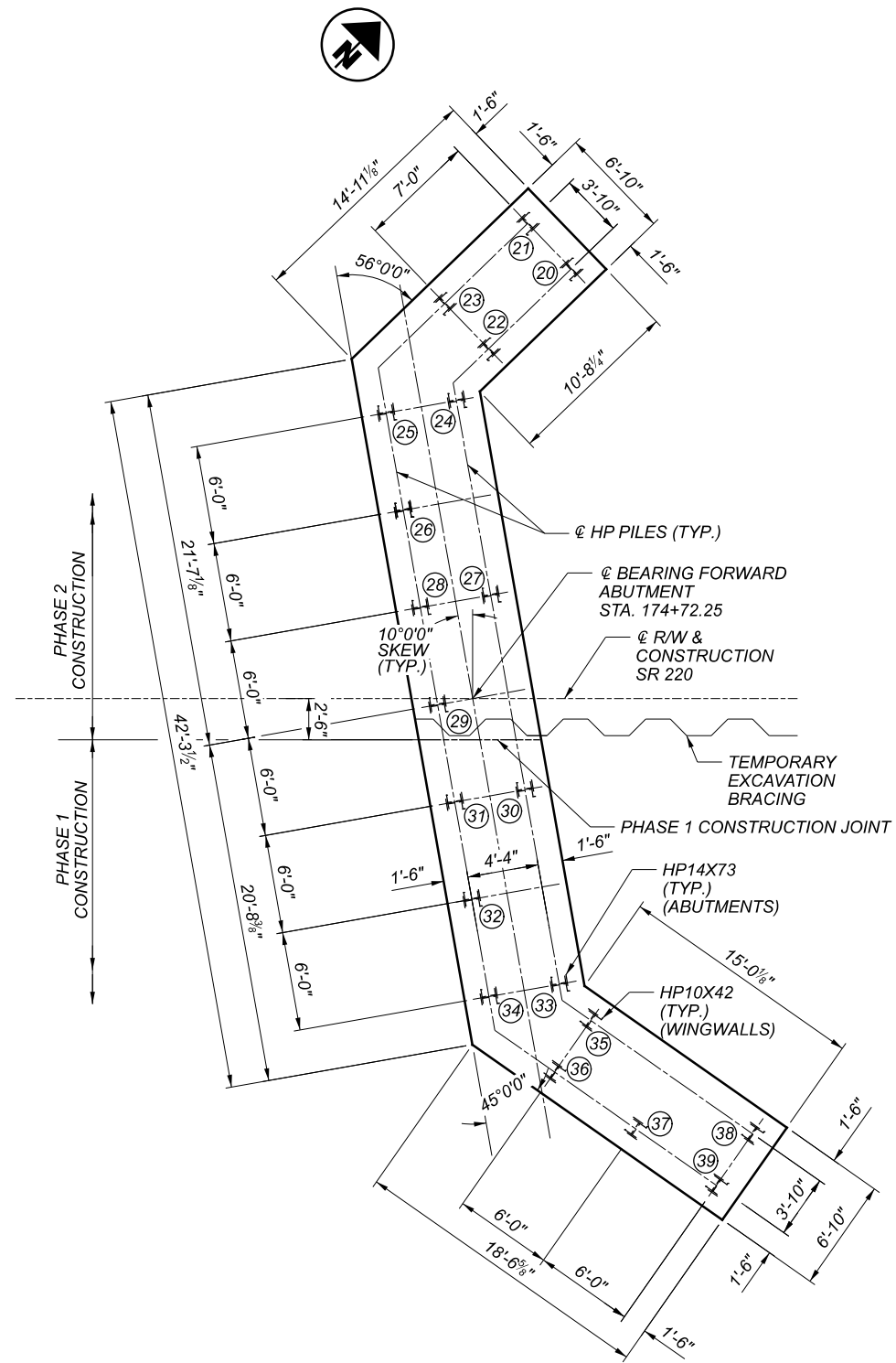


SITE PLAN
BRIDGE NO. PIK-220-0329
SR 220 OVER PEE PEE CREEK

SFN	6602224
DESIGN AGENCY	PRIME AE
DESIGNER/CHECKER	AMT BTJ
REVIEWER	KDC 06/10/21
PROJECT ID	102146
SUBSET	1 TOTAL 25
SHEET	P.28 TOTAL 52



REAR ABUTMENT FOUNDATION PLAN



FORWARD ABUTMENT FOUNDATION PLAN

LEGEND:

- ✕ INDICATES STEEL PILE
- ⑳ INDICATES PILE NUMBER

PILE	STATION	OFFSET
#1	173+56.70	28.7' LT
#2	173+53.95	26.0' LT
#3	173+61.65	23.8' LT
#4	173+58.93	21.0' LT
#5	173+66.26	18.1' LT
#6	173+61.99	17.4' LT
#7	173+67.30	12.2' LT
#8	173+68.34	6.3' LT
#9	173+64.07	5.5' LT
#10	173+69.38	0.38' LT
#11	173+70.43	5.5' RT
#12	173+66.16	6.3' RT
#13	173+71.46	11.4' RT
#14	173+72.51	17.4' RT
#15	173+68.24	18.1' RT
#16	173+69.18	23.9' RT
#17	173+66.47	21.2' RT
#18	173+64.26	28.8' RT
#19	173+61.52	26.1' RT
#20	174+78.25	26.1' LT
#21	174+75.59	28.9' LT
#22	174+73.21	21.3' LT
#23	174+70.55	24.0' LT
#24	174+71.26	18.1' LT
#25	174+66.99	17.4' LT
#26	174+68.03	11.4' LT
#27	174+73.33	6.3' LT
#28	174+69.07	5.5' LT
#29	174+70.12	0.38' RT
#30	174+75.43	5.5' RT
#31	174+71.16	6.3' RT
#32	174+72.20	12.2' RT
#33	174+77.51	17.4' RT
#34	174+73.24	18.1' RT
#35	174+79.43	19.6' RT
#36	174+77.23	22.7' RT
#37	174+82.15	26.1' RT
#38	174+89.26	26.4' RT
#39	174+87.06	29.6' RT

PILE DATA				
LOCATION	PILE TYPE	PILE NUMBER	PILE CUTOFF ELEVATION	ESTIMATED PILE LENGTH (EACH) (FEET)
REAR ABUT. WINGWALLS	HP10X42	1-4; 16-19	544.3	40
FORWARD ABUT. WINGWALLS	HP10X42	20-23; 35-39	544.8	40
REAR ABUTMENT	HP14X73	5-15	544.3	40
FORWARD ABUTMENT	HP14X73	24-34	544.8	40