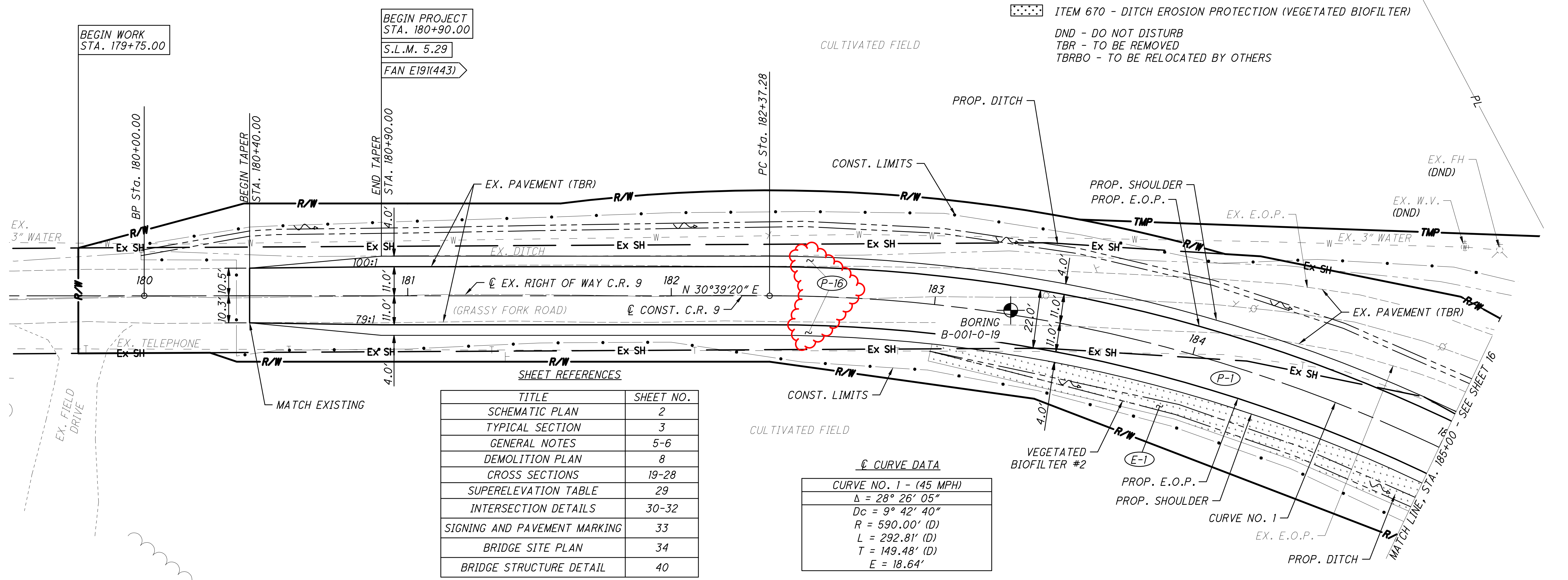


**PLAN AND PROFILE - C.R. 9
STA. 179+75 TO STA. 185+00**

PIK-CR9-5.29

LEGEND

- ITEM 670 - DITCH EROSION PROTECTION (VEGETATED BIOFILTER)
- DND - DO NOT DISTURB
- TBR - TO BE REMOVED
- TBRBO - TO BE RELOCATED BY OTHERS

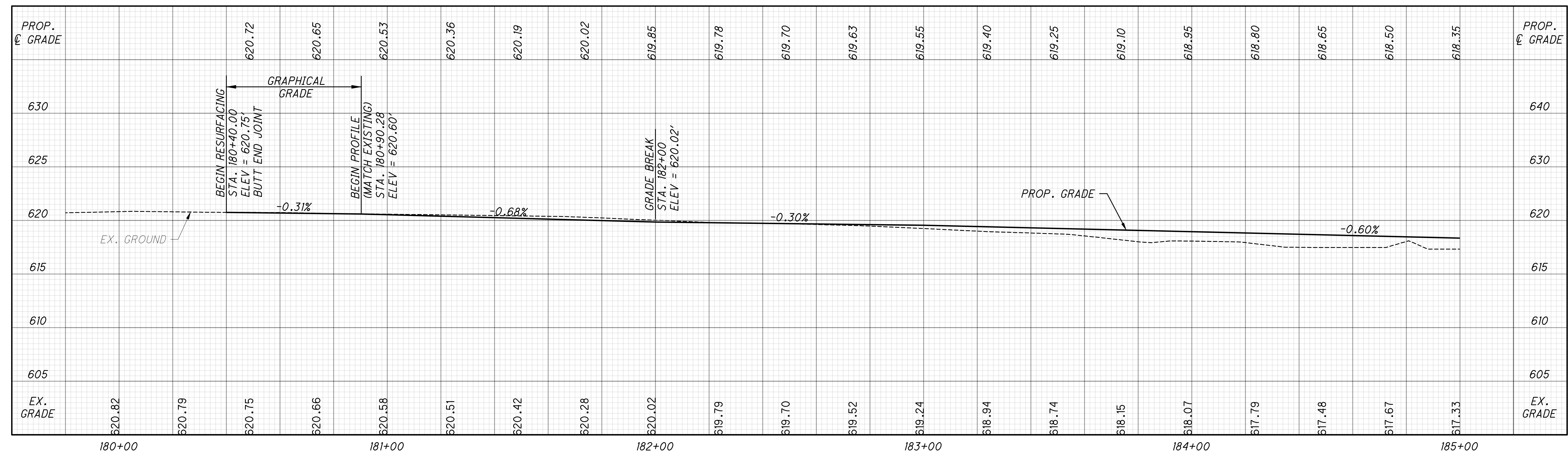


SHEET REFERENCES

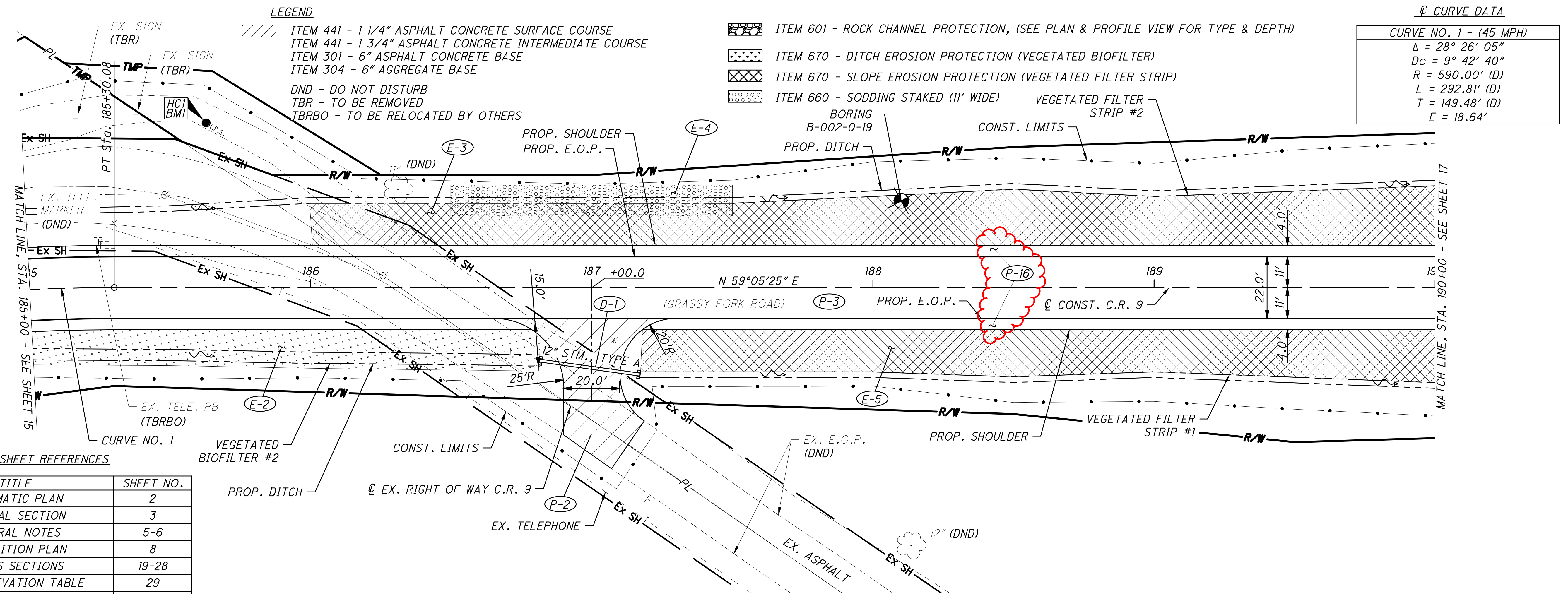
TITLE	SHEET NO.
SCHEMATIC PLAN	2
TYPICAL SECTION	3
GENERAL NOTES	5-6
DEMOLITION PLAN	8
CROSS SECTIONS	19-28
SUPERELEVATION TABLE	29
INTERSECTION DETAILS	30-32
SIGNING AND PAVEMENT MARKING	33
BRIDGE SITE PLAN	34
BRIDGE STRUCTURE DETAIL	40

∅ CURVE DATA

CURVE NO. 1 - (45 MPH)	
Δ	= 28° 26' 05"
Dc	= 9° 42' 40"
R	= 590.00' (D)
L	= 292.81' (D)
T	= 149.48' (D)
E	= 18.64'



M:\629001_PIK-9GrassyFork\DWG\Roadway\629001_GPO01.dwg 13-Dec-24 11:40 AM



☉ CURVE DATA

CURVE NO. 1 - (45 MPH)
Δ = 28° 26' 05"
Dc = 9° 42' 40"
R = 590.00' (D)
L = 292.81' (D)
T = 149.48' (D)
E = 18.64'

- LEGEND**
- ITEM 441 - 1 1/4" ASPHALT CONCRETE SURFACE COURSE
 - ITEM 441 - 1 3/4" ASPHALT CONCRETE INTERMEDIATE COURSE
 - ITEM 301 - 6" ASPHALT CONCRETE BASE
 - ITEM 304 - 6" AGGREGATE BASE
 - DND - DO NOT DISTURB
 - TBR - TO BE REMOVED
 - TBRBO - TO BE RELOCATED BY OTHERS

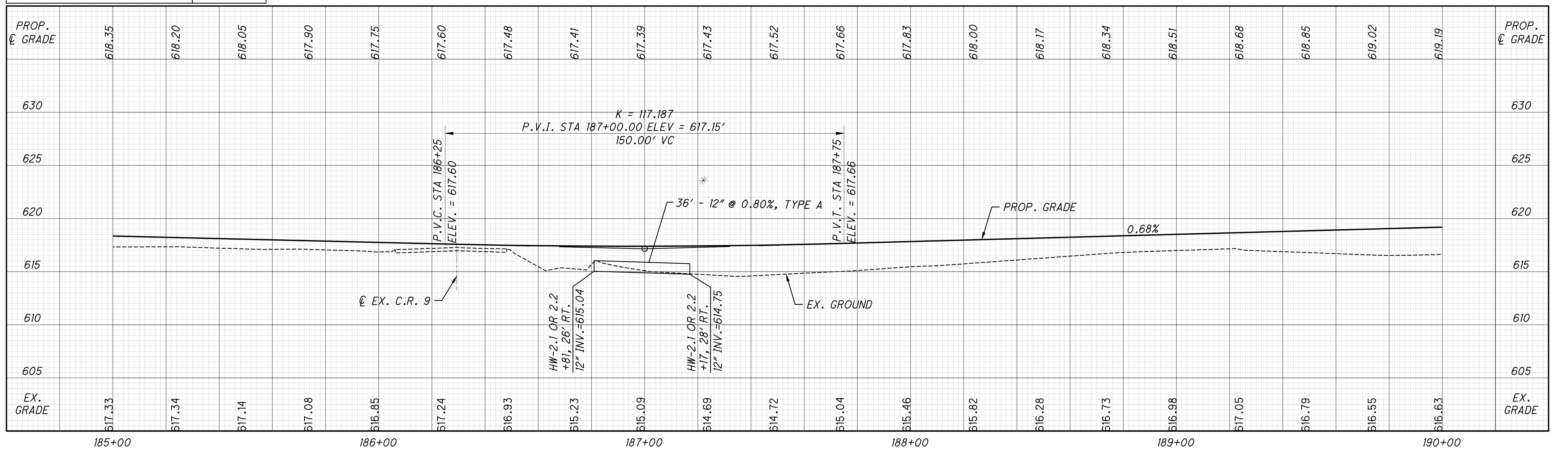
- ITEM 601 - ROCK CHANNEL PROTECTION, (SEE PLAN & PROFILE VIEW FOR TYPE & DEPTH)
- ITEM 670 - DITCH EROSION PROTECTION (VEGETATED BIOFILTER)
- ITEM 670 - SLOPE EROSION PROTECTION (VEGETATED FILTER STRIP)
- ITEM 660 - SODDING STAKED (11' WIDE)

SHEET REFERENCES

TITLE	SHEET NO.
SCHEMATIC PLAN	2
TYPICAL SECTION	3
GENERAL NOTES	5-6
DEMOLITION PLAN	8
CROSS SECTIONS	19-28
SUPERELEVATION TABLE	29
EX. BRIDGE REMOVAL DETAILS	30
INTERSECTION DETAILS	30-32
SIGNING AND PAVEMENT MARKING	33
BRIDGE SITE PLAN	34
BRIDGE STRUCTURE DETAIL	40

* SEE SHEET 11 FOR SIZE AND MATERIAL OPTIONS

NOTE:
UPON THE REALIGNMENT'S COMPLETION, EX. C.R. 9 ROADWAY WILL STILL BE ACCESSIBLE FROM NORTHERN AND SOUTHERN TIE-IN POINTS FOR PROPERTY OWNER AND UTILITY ACCESS.



**PLAN AND PROFILE - C.R. 9
STA. 185+00 TO STA. 190+00**

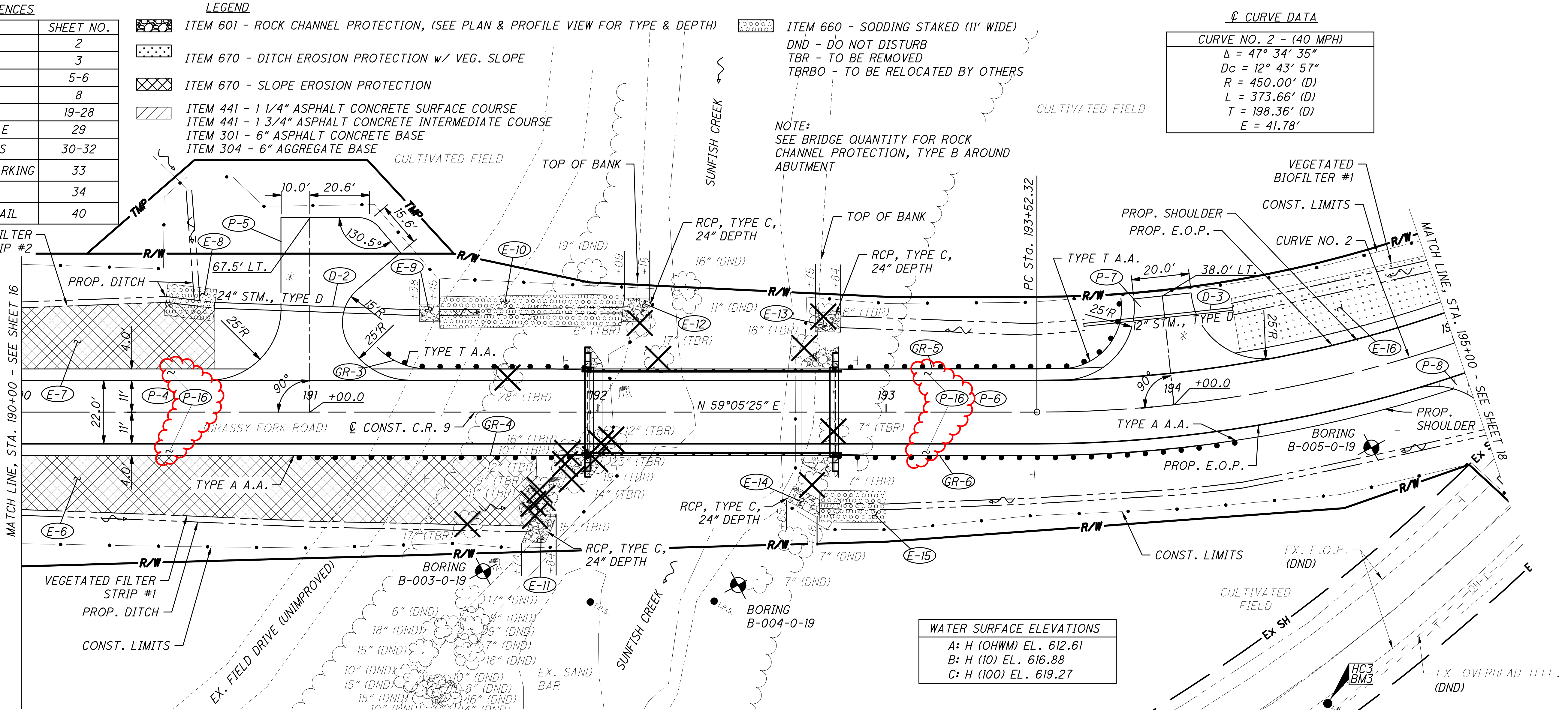
PIK-CR9-5.29

SHEET REFERENCES	
TITLE	SHEET NO.
SCHEMATIC PLAN	2
TYPICAL SECTION	3
GENERAL NOTES	5-6
DEMOLITION PLAN	8
CROSS SECTIONS	19-28
SUPERELEVATION TABLE	29
INTERSECTION DETAILS	30-32
SIGNING AND PAVEMENT MARKING	33
BRIDGE SITE PLAN	34
BRIDGE STRUCTURE DETAIL	40

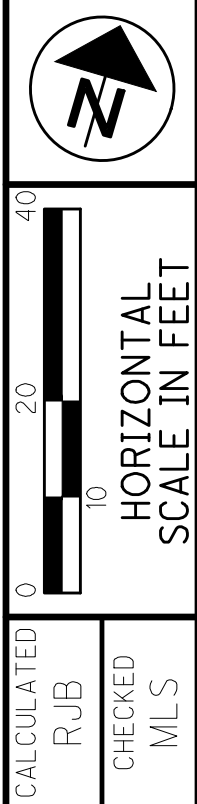
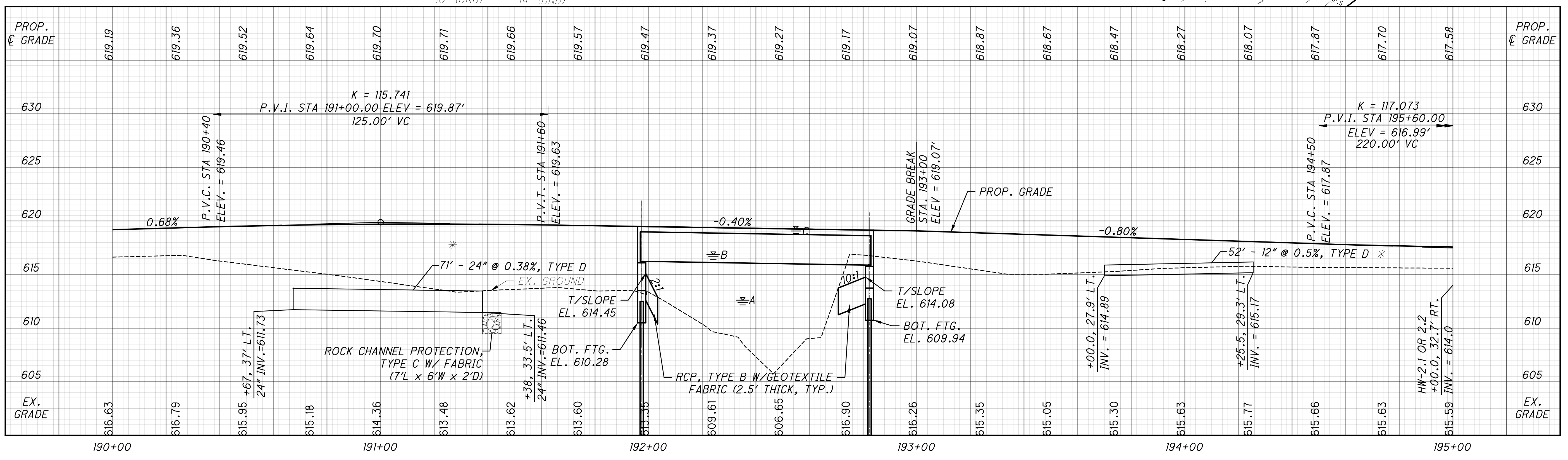
LEGEND	
	ITEM 601 - ROCK CHANNEL PROTECTION, (SEE PLAN & PROFILE VIEW FOR TYPE & DEPTH)
	ITEM 670 - DITCH EROSION PROTECTION W/ VEG. SLOPE
	ITEM 670 - SLOPE EROSION PROTECTION
	ITEM 441 - 1 1/4" ASPHALT CONCRETE SURFACE COURSE
	ITEM 441 - 1 3/4" ASPHALT CONCRETE INTERMEDIATE COURSE
	ITEM 301 - 6" ASPHALT CONCRETE BASE
	ITEM 304 - 6" AGGREGATE BASE

C CURVE DATA	
CURVE NO. 2 - (40 MPH)	
$\Delta = 47^\circ 34' 35''$	
$D_c = 12^\circ 43' 57''$	
$R = 450.00' (D)$	
$L = 373.66' (D)$	
$T = 198.36' (D)$	
$E = 41.78'$	

* SEE SHEET 11 FOR SIZE AND MATERIAL OPTIONS



WATER SURFACE ELEVATIONS	
A: H (OHWM) EL.	612.61
B: H (10) EL.	616.88
C: H (100) EL.	619.27



PLAN AND PROFILE - C.R. 9
STA. 190+00 TO STA. 195+00

PIK-CR9-5.29

M:\629001_PIK-9GrassyFork\DWG\Roadway\629001.dwg 13-Dec-24 11:40 AM

LEGEND

- ITEM 670 - DITCH EROSION PROTECTION W/ VEG. SLOPE
 - ITEM 441 - 1 1/4" ASPHALT CONCRETE SURFACE COURSE
 - ITEM 441 - 1 3/4" ASPHALT CONCRETE INTERMEDIATE COURSE
 - ITEM 301 - 6" ASPHALT CONCRETE BASE
 - ITEM 304 - 6" AGGREGATE BASE
 - ITEM 660 - SODDING STAKED (11' WIDE)
- DND - DO NOT DISTURB
TBR - TO BE REMOVED
TBRBO - TO BE RELOCATED BY OTHERS

☉ CURVE DATA

CURVE NO. 2 - (40 MPH)

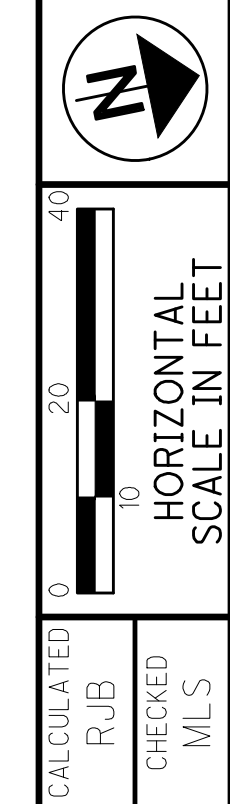
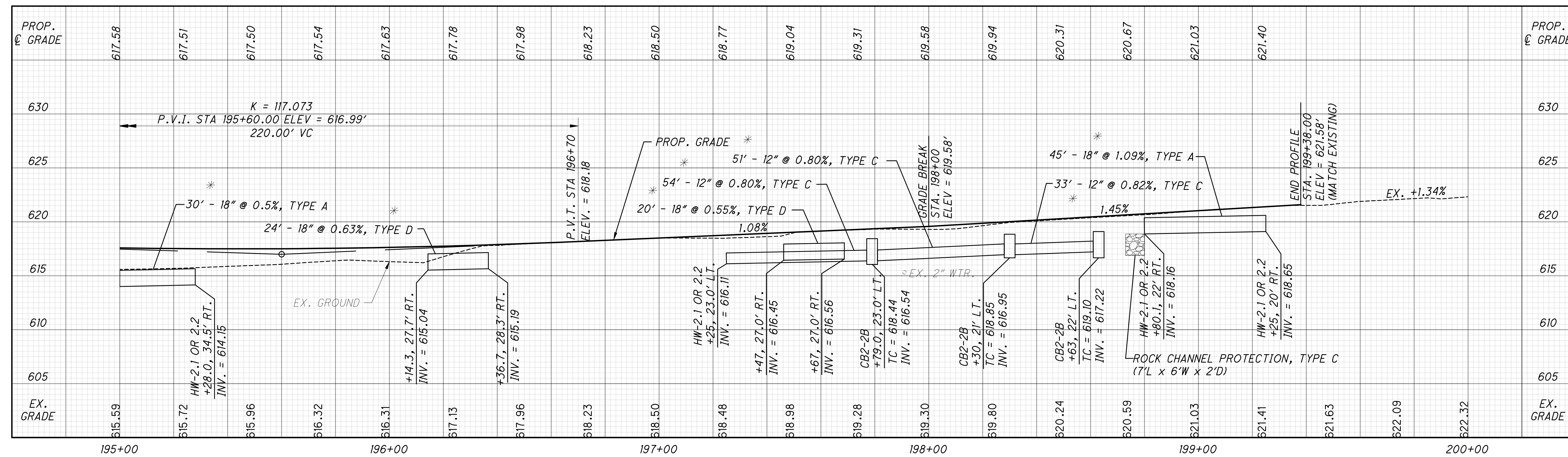
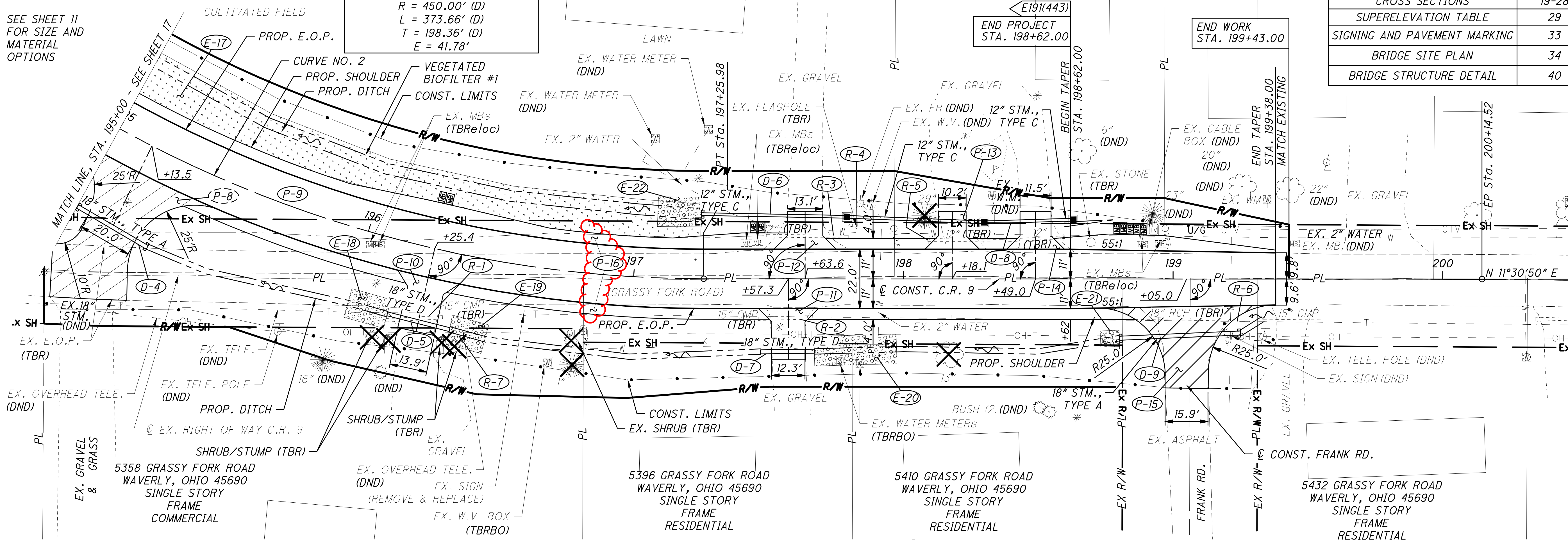
$\Delta = 47^\circ 34' 35''$
 $Dc = 12^\circ 43' 57''$
 $R = 450.00' (D)$
 $L = 373.66' (D)$
 $T = 198.36' (D)$
 $E = 41.78'$

ITEM 601 - ROCK CHANNEL PROTECTION, (SEE PLAN & PROFILE VIEW FOR TYPE & DEPTH)

SHEET REFERENCES

TITLE	SHEET NO.
SCHEMATIC PLAN	2
TYPICAL SECTION	3
GENERAL NOTES	5-6
DEMOLITION PLAN	8
CROSS SECTIONS	19-28
SUPERELEVATION TABLE	29
SIGNING AND PAVEMENT MARKING	33
BRIDGE SITE PLAN	34
BRIDGE STRUCTURE DETAIL	40

* SEE SHEET 11 FOR SIZE AND MATERIAL OPTIONS



**PLAN AND PROFILE - C.R. 9
STA. 195+00 TO STA. 200+00**

PIK-CR9-5.29

M:\629001_PIK-9GrassyFork\DWG\Roadway\629001.dwg 13-Dec-24 11:40 AM