

# STATE OF OHIO DEPARTMENT OF TRANSPORTATION

## PRE-35/127-2.46/20.49

JACKSON AND MONROE TOWNSHIPS

PREBLE COUNTY

SEE SHEET 2 FOR LOCATION MAPS AND  
DESIGN DESIGNATIONS

**FEDERAL PROJECT NUMBER**

E170 (722)

**RAILROAD INVOLVEMENT**

NONE

**PROJECT DESCRIPTION**

IMPROVEMENT OF 0.08 MILE OF US ROUTE 35 AND 0.13 MILES OF STATE ROUTE 127 REPLACE THE EXISTING SUPERSTRUCTURES OF A BRIDGE CARRYING US 35 OVER ELKHORN CREEK AND A BRIDGE CARRYING SR 127 OVER PRICE CREEK WITH SINGLE SPAN COMPOSITE PRESTRESSED BOX BEAM SUPERSTRUCTURE. RESURFACING OF APPROACH PAVEMENT AND REPLACEMENT OF APPROACH GUARDRAIL AT BOTH LOCATIONS

**EARTH DISTURBED AREAS**

**PRE-35-2.46**

PROJECT EARTH DISTURBED AREA: 0.09 ACRES  
ESTIMATED CONTRACTOR EARTH DISTURBED AREA: 0.13 ACRES  
NOTICE OF INTENT EARTH DISTURBED AREA: N/A (NOI NOT REQUIRED)

**PRE-127-20.49**

PROJECT EARTH DISTURBED AREA: 0.13 ACRES  
ESTIMATED CONTRACTOR EARTH DISTURBED AREA: 0.13 ACRES  
NOTICE OF INTENT EARTH DISTURBED AREA: N/A (NOI NOT REQUIRED)

**2019 SPECIFICATIONS**

THE STANDARD SPECIFICATIONS OF THE STATE OF OHIO, DEPARTMENT OF TRANSPORTATION INCLUDING SUPPLEMENTAL SPECIFICATIONS LISTED IN THE PLANS AND CHANGES LISTED IN THE PROPOSAL SHALL GOVERN THIS IMPROVEMENT.

**INDEX OF SHEETS:**

TITLE SHEET	1
LOCATION MAPS & DESIGN DESIGNATIONS	2
MAINTENANCE OF TRAFFIC NOTES	3
MAINTENANCE OF TRAFFIC PLAN	4 - 5
GENERAL NOTES	6
GENERAL SUMMARY	7
PAVEMENT CALCULATIONS	8
GUARDRAIL SUB SUMMARY	9
STRUCTURE GENERAL NOTES	10
STRUCTURES OVER 20 FOOT SPAN	
PRE-35-0246	11 - 18
PRE-127-2049	19 - 26

**DESIGN EXCEPTIONS**

NONE

**ADA DESIGN WAIVERS**

NONE

**UNDERGROUND UTILITIES**  
Contact Two Working Days  
Before You Dig

**OHIO811.org**  
Before You Dig

OHIO811 8-1-1 or 1 800 362-2764  
(Non members must be called directly)

PLAN PREPARED BY:  
OHIO DEPARTMENT OF TRANSPORTATION  
DISTRICT 8 PRODUCTION - BRIDGE OFFICE  
505 SOUTH S.R. 741 LEBANON OHIO 45036

**ENGINEER'S SEAL:**

SIGNED:   
DATE: 8/3/2021

STANDARD CONSTRUCTION DRAWINGS				SUPPLEMENTAL SPECIFICATIONS	SPECIAL PROVISIONS
BP-3.1	1/17/20	TC-65.10	1/17/14	800-2020 1/15/21	WATERWAY PERMITS CONDITIONS
		TC-65.11	7/21/17	818 1/19/18	PRE-35-2.46
MGS-1.1	1/19/18			821 4/20/12	DATE: 4/08/21
MGS-2.1	1/19/18	DS-1-92	7/18/03	832 10/19/18	WATERWAY PERMITS CONDITIONS
MGS-3.1	1/19/18	PSBD-2-07	7/20/18	846 4/17/15	PRE-127-20.49
MGS-4.2	7/19/13	TST-1-99	7/20/18		DATE: 8/06/21
MGS-4.3	1/18/12				
MGS-5.3	7/15/16	MT-96.11	4/17/20		
		MT-96.20	7/15/16		
RM-4.2	4/17/20	MT-96.26	1/18/19		
		MT-97.10	4/19/19		
		MT-101.60	1/17/20		
		MT-101.70	1/17/20		
		MT-101.75	1/17/20		
		MT-105.10	1/17/20		

I HEREBY APPROVE THESE PLANS AND DECLARE THAT THE MAKING OF THIS IMPROVEMENT WILL NOT REQUIRE THE CLOSING TO TRAFFIC OF THE HIGHWAY EXCEPT AS NOTED ON SHEET 3, AND THAT PROVISIONS FOR THE MAINTENANCE AND SAFETY OF TRAFFIC WILL BE AS SET FORTH ON THE PLANS AND ESTIMATES.

APPROVED   
DATE: 8-3-2021 DISTRICT DEPUTY DIRECTOR

APPROVED \_\_\_\_\_  
DATE \_\_\_\_\_ DIRECTOR, DEPARTMENT OF TRANSPORTATION

TITLE SHEET

DESIGN AGENCY



DESIGNER  
**GTF**

REVIEWER  
JAO MM-DD-YY

PROJECT ID  
102780

SHEET TOTAL  
1 31

PRE-35/127-2.46/20.49

MODEL SHEET PAPER SIZE: 17X11 (in.) DATE: 8/02/2021 TIME: 8:16:30 AM USER: gfreeman  
p:\ohio\dot-pw\benlley.com\ohio\dot-pw\02\Documents\01 Active Projects\District 8\Preble\102780\400-Engineering\Roadway\Sheets\102780\_GT001.dgn

**ITEM 614, MAINTAINING TRAFFIC**

ON US 35 A MINIMUM OF ONE LANE OF TRAFFIC IN EACH DIRECTION SHALL BE MAINTAINED AT ALL TIMES EXCEPT FOR A PERIOD NOT EXCEED 60 CONSECUTIVE CALENDER DAYS , WHEN TWO WAY ONE LANE TRAFFIC WILL BE MAINTAINED THROUGH THE USE OF TEMPORARY TRAFFIC SIGNALS. SIGNALS SHALL BE OVERHEAD MOUNTED IN ACCORDANCE WITH THE DETAILS SOWN ON TRAFFIC SCD MT-96.20. A DISINCENTIVE SHALL BE ASSESSED IN THE AMOUNT OF \$3,900 FOR EACH DAY THE ROADWAY TRAFFIC IS NOT MAINTAINED IN ITS ORIGINAL CONFIGURATION BEYOND THE SPECIFIED LIMIT.

ON US 127 A MINIMUM OF ONE LANE OF TRAFFIC IN EACH DIRECTION SHALL BE MAINTAINED AT ALL TIMES, EXCEPT FOR A PERIOD NOT EXCEED 30 CONSECUTIVE CALENDER DAYS , WHEN THROUGH TRAFFIC MAY BE DETOURED AS SHOWN ON SHEET 6. A DISINCENTIVE SHALL BE ASSESSED IN THE AMOUNT OF \$3,900 FOR EACH DAY THE ROADWAY TRAFFIC IS NOT MAINTAINED IN ITS ORIGINAL CONFIGURATION BEYOND THE SPECIFIED LIMIT.

NOTICE OF CLOSURE SIGNS (W20-H13) SHALL BE ERECTED BY THE CONTRACTOR PRIOR TO THE SCHEDULED ROAD OR RAMP CLOSURE IN ACCORDANCE WITH THE NOTICE OF CLOSURE TIME TABLE BELOW. [AT THE APPROVAL OF THE ENGINEER, PORTABLE CHANGEABLE MESSAGE SIGNS MAY BE USED IN LIEU OF THE STANDARD FLATSHEET SIGN FOR CLOSURE DURATIONS OF LESS THAN 1 WEEK.]

THE SIGNS SHALL BE ERECTED ON THE RIGHT-HAND SIDE OF THE ROAD/RAMP FACING TRAFFIC. THEY SHALL BE PLACED SO AS NOT TO INTERFERE WITH THE VISIBILITY OF ANY OTHER TRAFFIC CONTROL SIGNS. ON ROADWAYS, THEY SHOULD BE ERECTED AT OR NEAR THE POINT OF CLOSURE. THE SIGNS MAY BE ERECTED ANYWHERE ON RAMPS AS LONG AS THEY ARE VISIBLE TO THE MOTORISTS USING THE RAMP. ON ENTRANCE RAMPS, THE SIGN SHALL BE ERECTED WELL IN ADVANCE OF THE MERGE AREA TO AVOID DISTRACTING MOTORISTS.

NOTICE OF CLOSURE SIGN TIME TABLE		
ITEM	DURATION OF CLOSURE	NOTICE DUE TO LISTED CONTACTS
RAMP & ROAD CLOSURES	>= 2 WEEKS	14 CALENDAR DAYS PRIOR TO CLOSURE
	> 12 HOURS & < 2 WEEKS	7 CALENDAR DAYS PRIOR TO CLOSURE
	< 12 HOURS	2 BUSINESS DAYS PRIOR TO CLOSURE

THE SIGN SHALL DISPLAY THE DATE OF THE CLOSURE IN MMM-DD FORMAT AND THE NUMBER OF DAYS OF THE CLOSURE. THE LAST LINE OF THE W20-H13 SIGN LISTS A PHONE NUMBER WHICH A MOTORIST MAY CALL FOR ADDITIONAL INFORMATION. THIS IS TO BE A SPECIFIC OFFICE WITHIN THE DISTRICT RATHER THAN THE GENERAL SWITCHBOARD NUMBER.

LENGTH AND DURATION OF LANE CLOSURES AND RESTRICTIONS SHALL BE AT THE APPROVAL OF THE ENGINEER. IT IS THE INTENT TO MINIMIZE THE IMPACT TO THE TRAVELING PUBLIC. LANE CLOSURES OR RESTRICTIONS OVER SEGMENTS OF THE PROJECT IN WHICH NO WORK IS ANTICIPATED WITHIN A REASONABLE TIME FRAME, AS DETERMINED BY THE ENGINEER, SHALL NOT BE PERMITTED. THE LEVEL OF UTILIZATION OF MAINTENANCE OF TRAFFIC DEVICES SHALL BE COMMENSURATE WITH THE WORK IN PROGRESS.

ALL WORK AND TRAFFIC CONTROL DEVICES SHALL BE IN ACCORDANCE WITH C&MS 614 AND OTHER APPLICABLE PORTIONS OF THE SPECIFICATIONS, AS WELL AS THE OHIO MANUAL OF UNIFORM TRAFFIC CONTROL DEVICES. PAYMENT FOR ALL LABOR, EQUIPMENT AND MATERIALS SHALL BE INCLUDED IN THE LUMP SUM CONTRACT PRICE FOR ITEM 614, MAINTAINING TRAFFIC, UNLESS SEPARATELY ITEMIZED IN THE PLAN.

**ITEM 622 - PORTABLE CONCRETE BARRIER**

THE FOLLOWING ESTIMATED QUANTITIES FOR ITEM 622 - PORTABLE CONCRETE BARRIER HAVE BEEN CARRIED TO THE GENERAL SUMMARY. PLACE BARRIER FOR THE PRE-35-2.46 LOCATION AS SHOWN IN THE MAINTANCE OF TRAFFIC PLAN AND PHASE CONSTRUCTION DETAILS FOR STRUCTURE No.: PRE-35-0246. PLACE BARRIER AT THE PRE-127-20.49 LOCATION PER S.C.D. MT-96.11 AND AS SHOWN IN THE PHASE CONSTRUCTION DETAILS FOR STRUCTURE No.: PRE-127-2049.

PRE-35-0246  
PORTABLE BARRIER, UNANCHORED..... 430 FT

**NOTIFICATION OF TRAFFIC RESTRICTIONS**

THROUGHOUT THE DURATION OF THE PROJECT, THE CONTRACTOR SHALL NOTIFY THE PROJECT ENGINEER IN WRITING OF ALL TRAFFIC RESTRICTIONS AND UPCOMING MAINTENANCE OF TRAFFIC CHANGES. THE CONTRACTOR SHALL ENSURE THE WRITTEN NOTIFICATION IS SUBMITTED IN A TIMELY MANNER TO ALLOW THE PROJECT ENGINEER TO MEET THE REQUIRED TIME FRAMES SET FORTH IN THE TABLE BELOW TO INFORM THE LISTED CONTACTS.

THIS NOTIFICATION SHALL BE RECEIVED BY THE PROJECT ENGINEER PRIOR TO THE PHYSICAL SETUP OF ANY APPLICABLE SIGNS OR MESSAGE BOARDS. INFORMATION SHOULD INCLUDE, BUT IS NOT LIMITED TO, ALL CONSTRUCTION ACTIVITIES THAT IMPACT OR INTERFERE WITH TRAFFIC AND SHALL LIST THE SPECIFIC LOCATION, TYPE OF WORK, ROAD STATUS, DATE AND TIME OF RESTRICTION, DURATION OF RESTRICTION, NUMBER OF LANES MAINTAINED, NUMBER OF LANES CLOSED, MINIMUM VERTICAL CLEARANCE, MINIMUM WIDTH OF DRIVABLE PAVEMENT, DETOUR ROUTES, IF APPLICABLE, AND ANY OTHER INFORMATION REQUESTED BY THE PROJECT ENGINEER.

NOTIFICATION TIME TABLE		
ITEM	DURATION OF CLOSURE	NOTICE DUE TO LISTED CONTACTS
RAMP & ROAD CLOSURES	>= 2 WEEKS	21 CALENDAR DAYS PRIOR TO CLOSURE
	> 12 HOURS & < 2 WEEKS	14 CALENDAR DAYS PRIOR TO CLOSURE
	< 12 HOURS	4 BUSINESS DAYS PRIOR TO CLOSURE
LANE CLOSURES & RESTRICTIONS	>= 2 WEEKS	14 CALENDAR DAYS PRIOR TO CLOSURE
	< 2 WEEKS	5 BUSINESS DAYS PRIOR TO CLOSURE
START OF CONSTRUCTION & TRAFFIC PATTERN CHANGES	N/A	14 CALENDAR DAYS PRIOR TO IMPLEMENTATION

ANY UNFORESEEN CONDITIONS NOT SPECIFIED IN THE PLANS REQUIRING TRAFFIC RESTRICTIONS SHALL ALSO BE REPORTED TO THE PROJECT ENGINEER USING THE NOTIFICATION TIME TABLE.

CONTACT THE FOLLOWING:  
-DISTRICT PUBLIC INFORMATION OFFICER BY EMAIL AT DOT.D08.PIO@DOT.OHIO.GOV  
-DISTRICT PERMIT SECTION BY EMAIL AT D08.PERMITS@DOT.OHIO.GOV  
-CENTRAL OFFICE SPECIAL HAUL PERMITS SECTION BY EMAIL AT HAULING.PERMITS@DOT.OHIO.GOV

**DELINEATION OF PORTABLE AND PERMANENT BARRIER**

BARRIER REFLECTORS AND OBJECT MARKERS SHALL BE INSTALLED ON ALL PORTABLE BARRIER (PB) USED FOR TRAFFIC CONTROL; AND, ON PERMANENT CONCRETE BARRIER (INCLUDING BRIDGE PARAPETS) LOCATED WITHIN 5 FEET OF THE EDGE OF THE ADJACENT TRAVEL LANE.

BARRIER REFLECTORS SHALL CONFORM TO C&MS 626, EXCEPT THAT THE SPACING SHALL BE AS PER TRAFFIC SCD MT-101.70. OBJECT MARKERS AND THEIR INSTALLATION SHALL CONFORM TO C&MS 614.03 AND SCD MT-101.70. WHEN THE PB CONTAINS GLARE SCREEN, ONE SET OF THREE VERTICAL STRIPES OF SHEETING SHALL BE CONSIDERED EQUIVALENT TO AN OBJECT MARKER, ONE-WAY.

THE FOLLOWING ESTIMATED QUANTITIES HAVE BEEN INCLUDED IN THE PLANS AND CARRIED TO THE GENERAL SUMMARY:

ITEM 614, BARRIER REFLECTOR, TYPE 1 (BI-DIRECTIONAL) 38 EACH

ITEM 614, OBJECT MARKER, TWO-WAY 38 EACH

PAYMENT SHALL BE FULL COMPENSATION FOR ALL MATERIAL, LABOR, INCIDENTALS AND EQUIPMENT NECESSARY FOR FURNISHING, INSTALLING, MAINTAINING AND REMOVING EACH OF THE ABOVE ITEMS.

**ITEM 614, WORK ZONE IMPACT ATTENUATOR FOR 24" WIDE HAZARDS (BIDIRECTIONAL)**

THIS ITEM SHALL CONSIST OF FURNISHING AND INSTALLING A NON-GATING IMPACT ATTENUATOR. FURNISH AN IMPACT ATTENUATOR FROM THE OFFICE OF ROADWAY ENGINEERING'S APPROVED LIST FOR WORK ZONE IMPACT ATTENUATORS, FROM THE ROADWAY STANDARDS APPROVED PRODUCTS WEB PAGE. INSTALLATION SHALL BE AT THE LOCATIONS SPECIFIED IN THE PLANS IN ACCORDANCE WITH THE MANUFACTURER'S SPECIFICATIONS.

THE CONTRACTOR SHALL REPAIR OR REPLACE A DAMAGED UNIT WITHIN 24 HOURS OF A DAMAGING IMPACT. WHEN BIDIRECTIONAL DESIGNS ARE SPECIFIED, THE CONTRACTOR SHALL SUPPLY APPROPRIATE TRANSITIONS. WHEN GATING IMPACT ATTENUATORS ARE DESIRED, THE CONTRACTOR SHALL SUBMIT DOCUMENTATION TO THE ENGINEER FOR ACCEPTANCE.

THE COST FOR THE ADDITIONAL BARRIER REQUIRED FOR A GATING IMPACT ATTENUATOR SHALL BE INCLUDED IN THE COST OF THE GATING IMPACT ATTENUATOR. PAYMENT FOR THE ABOVE WORK SHALL BE MADE AT THE UNIT PRICE BID AND SHALL INCLUDE ALL LABOR, TOOLS, EQUIPMENT AND MATERIALS NECESSARY TO CONSTRUCT AND MAINTAIN A COMPLETE AND FUNCTIONAL IMPACT ATTENUATOR SYSTEM, INCLUDING ALL RELATED BACKUPS, TRANSITIONS, LEVELING PADS, HARDWARE AND GRADING, NOT SEPARATELY SPECIFIED, AS REQUIRED BY THE MANUFACTURER.

**WORK ZONE MARKINGS AND SIGNS**

THE FOLLOWING ESTIMATED QUANTITIES HAVE BEEN CARRIED TO THE GENERAL SUMMARY FOR USE AT LOCATIONS IDENTIFIED BY THE ENGINEER FOR WORK ZONE PAVEMENT MARKINGS AND SIGNS PER THE REQUIREMENTS OF C&MS 614.04 AND 614.11.

PRE-35-0246  
WORK ZONE STOP LINE, CLASS 1, 740.06, TYPE 1..... 36 FT  
WORK ZONE EDGE LINE, CLASS 1, 4", 740.06, TYPE 1..... 0.13 MI  
WORK ZONE CENTER LINE, CLASS 1, 740.06, TYPE 1..... 0.19 MI

**FLOODLIGHTING**

FLOODLIGHTING OF THE WORK SITE FOR OPERATIONS CONDUCTED DURING NIGHTTIME PERIODS SHALL BE ACCOMPLISHED SO THAT THE LIGHTS DO NOT CAUSE GLARE TO THE DRIVERS ON THE ROADWAY. TO ENSURE THE ADEQUACY OF THE FLOODLIGHT PLACEMENT, THE CONTRACTOR AND THE ENGINEER SHALL DRIVE THROUGH THE WORK SITE EACH NIGHT WHEN THE LIGHTING IS IN PLACE AND OPERATIVE PRIOR TO COMMENCING ANY WORK. IF GLARE IS DETECTED, THE LIGHT PLACEMENT AND SHIELDING SHALL BE ADJUSTED TO THE SATISFACTION OF THE ENGINEER BEFORE WORK PROCEEDS.

PAYMENT FOR ALL LABOR, EQUIPMENT AND MATERIALS SHALL BE INCLUDED IN THE LUMP SUM CONTRACT PRICE FOR ITEM 614, MAINTAINING TRAFFIC.

**ROADS FOR MAINTAINING TRAFFIC (LOCAL DETOUR ROUTE)**

IN ADDITION TO THE OFFICIAL, SIGNED DETOUR ROUTE, A LOCAL ROUTE HAS BEEN DETERMINED TO BE THE SECONDARY, UNSIGNED DETOUR ROUTE OR "DESIGNATED LOCAL DETOUR ROUTE." THIS ROUTE IS SHOWN ON SHEET 6. DURING THE TIME THAT TRAFFIC IS DETOURED, THE CONTRACTOR SHALL MAINTAIN THIS ROUTE IN A CONDITION WHICH IS REASONABLY SMOOTH AND FREE FROM HOLES, RUTS, RIDGES, BUMPS, DUST AND STANDING WATER. ONCE THE DETOUR IS REMOVED AND TRAFFIC RETURNED TO ITS NORMAL PATTERN, THE DESIGNATED LOCAL DETOUR ROUTE SHALL BE RESTORED TO A CONDITION THAT IS EQUIVALENT TO THAT WHICH EXISTED PRIOR TO ITS USE FOR THIS PURPOSE. ALL SUCH WORK SHALL BE PERFORMED WHEN AND AS DETERMINED BY THE ENGINEER.

ALL MATERIALS, LABOR, ETC. FOR MAINTAINING THE LOCAL DETOUR ROUTE ARE TO BE INCLUDED IN THE LUMP SUM ITEM 615, ROADS FOR MAINTAINING TRAFFIC

DESIGN AGENCY

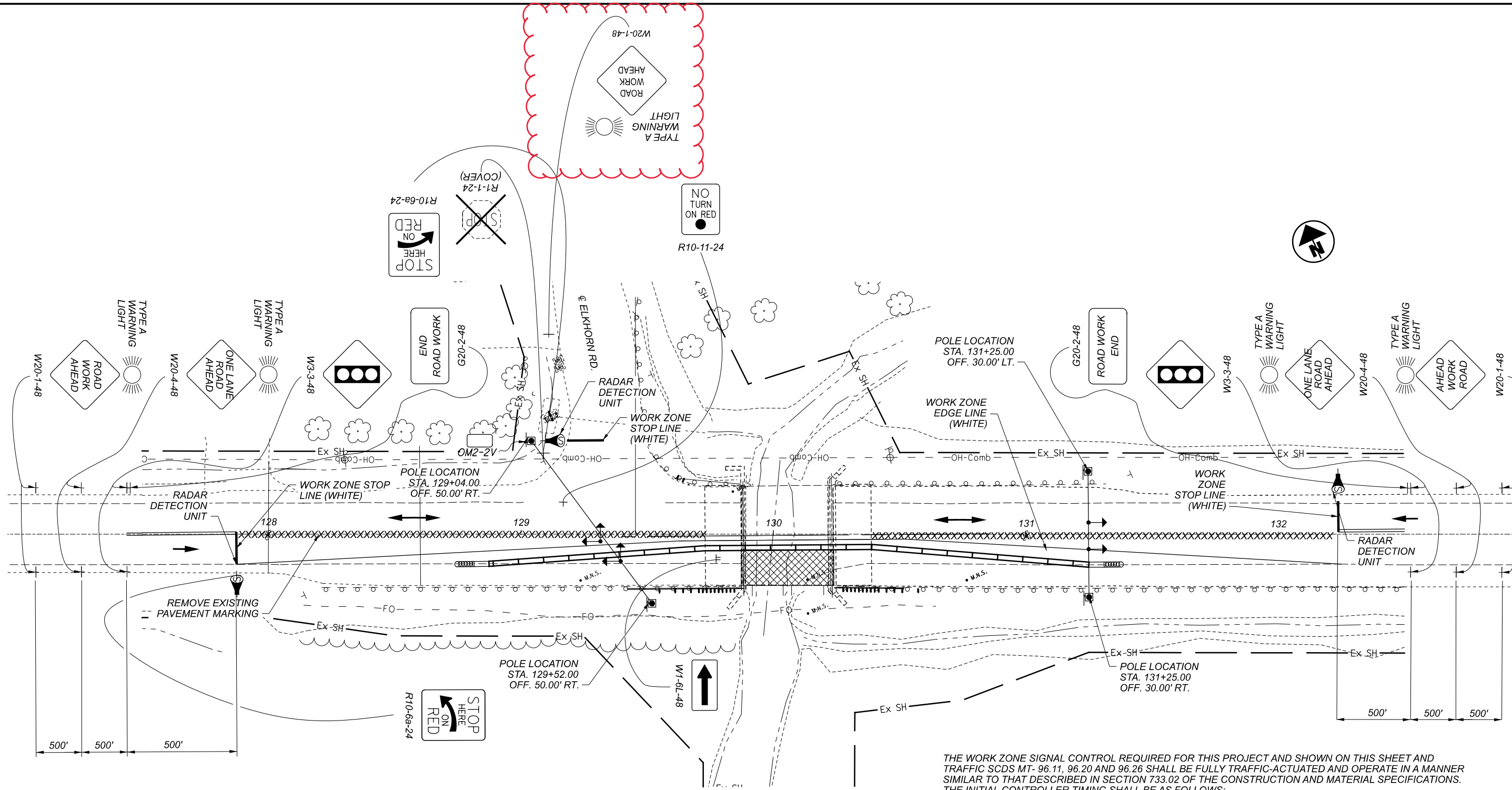


DESIGNER  
GTF

REVIEWER  
SK

PROJECT ID  
102780

SHEET TOTAL  
3 | 31



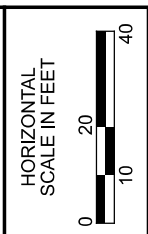
LEGEND	
DRUMS	o o o o o
COVER EXISTING MARKINGS	xxxxxxx
DIRECTION OF TRAVEL	→
TYPE 3 BARRICADE	⊥
TYPE 1 BARRICADE	#
TEMP. TRAFFIC SIGNAL	↔
WORK ZONE	▨

**NOTES:**  
 1) REFER TO SCD MT-96.11 AND SCD MT-96.20 FOR ADDITIONAL INFORMATION.

THE WORK ZONE SIGNAL CONTROL REQUIRED FOR THIS PROJECT AND SHOWN ON THIS SHEET AND TRAFFIC SCDS MT- 96.11, 96.20 AND 96.26 SHALL BE FULLY TRAFFIC-ACTUATED AND OPERATE IN A MANNER SIMILAR TO THAT DESCRIBED IN SECTION 733.02 OF THE CONSTRUCTION AND MATERIAL SPECIFICATIONS. THE INITIAL CONTROLLER TIMING SHALL BE AS FOLLOWS:

	PHASE					
	1 (ALL RED) DUMMY PHASE	2 US 35 (EASTBOUND)	3 (ALL RED) DUMMY PHASE	4 US 35 (WESTBOUND)	5 (ALL RED) DUMMY PHASE	6 ELKHORN RD.
MIN. GREEN		20		20		5
EXTENSION		3		3		3
MAX. GREEN		30		30		15
YELLOW		4		4		4
ALL RED	X	12	X	12	X	12
RECALL	OFF	ON	OFF	OFF	OFF	OFF

THE CONTRACTOR SHALL ALSO DESIGN, FURNISH, INSTALL AND MAINTAIN A TRAFFIC DETECTOR ON EACH TRAFFIC APPROACH WHICH WILL RELIABLY DETECT ALL LEGAL TRAFFIC APPROACHING (BUT NOT LEAVING) THE SIGNAL AS IT PASSES OR WAITS IN THE DESIGNATED DETECTOR ZONE SHOWN IN THE PLANS. DETECTOR DESIGNS WHICH DO NOT PROVIDE RELIABLE DETECTION, FREE FROM FALSE CALLS, SHALL BE IMMEDIATELY REPLACED BY THE CONTRACTOR.



**MAINTENANCE OF TRAFFIC PLAN  
 PRE-35-2.46 PHASE 1**

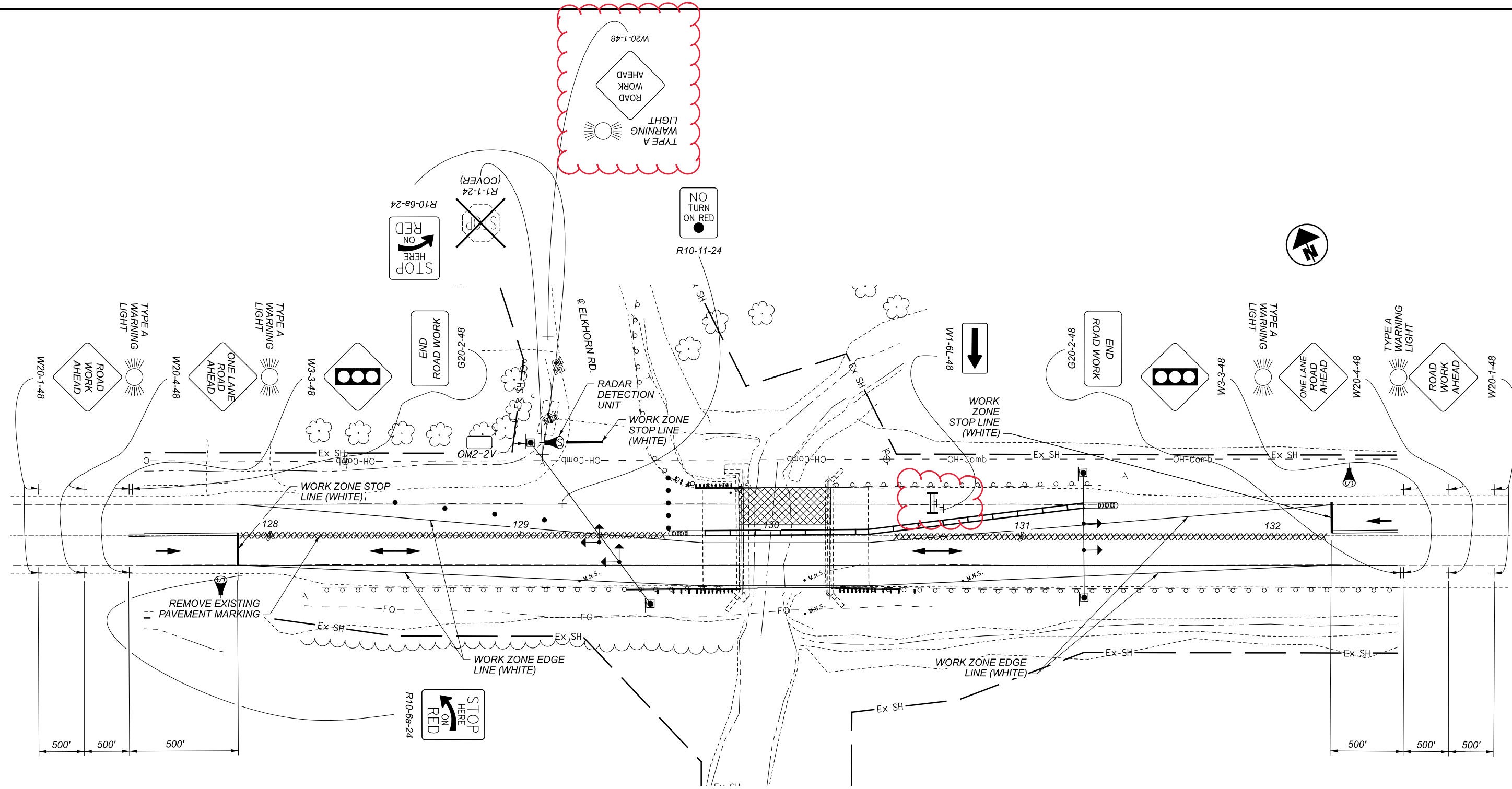
DESIGN AGENCY:

DESIGNER: GTF

REVIEWER: SK

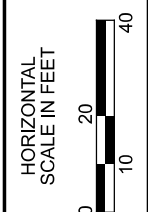
PROJECT ID: 102780

SHEET: 4 TOTAL: 31



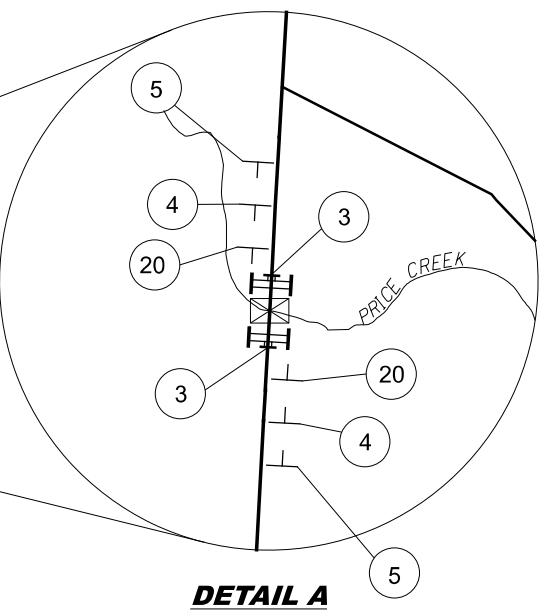
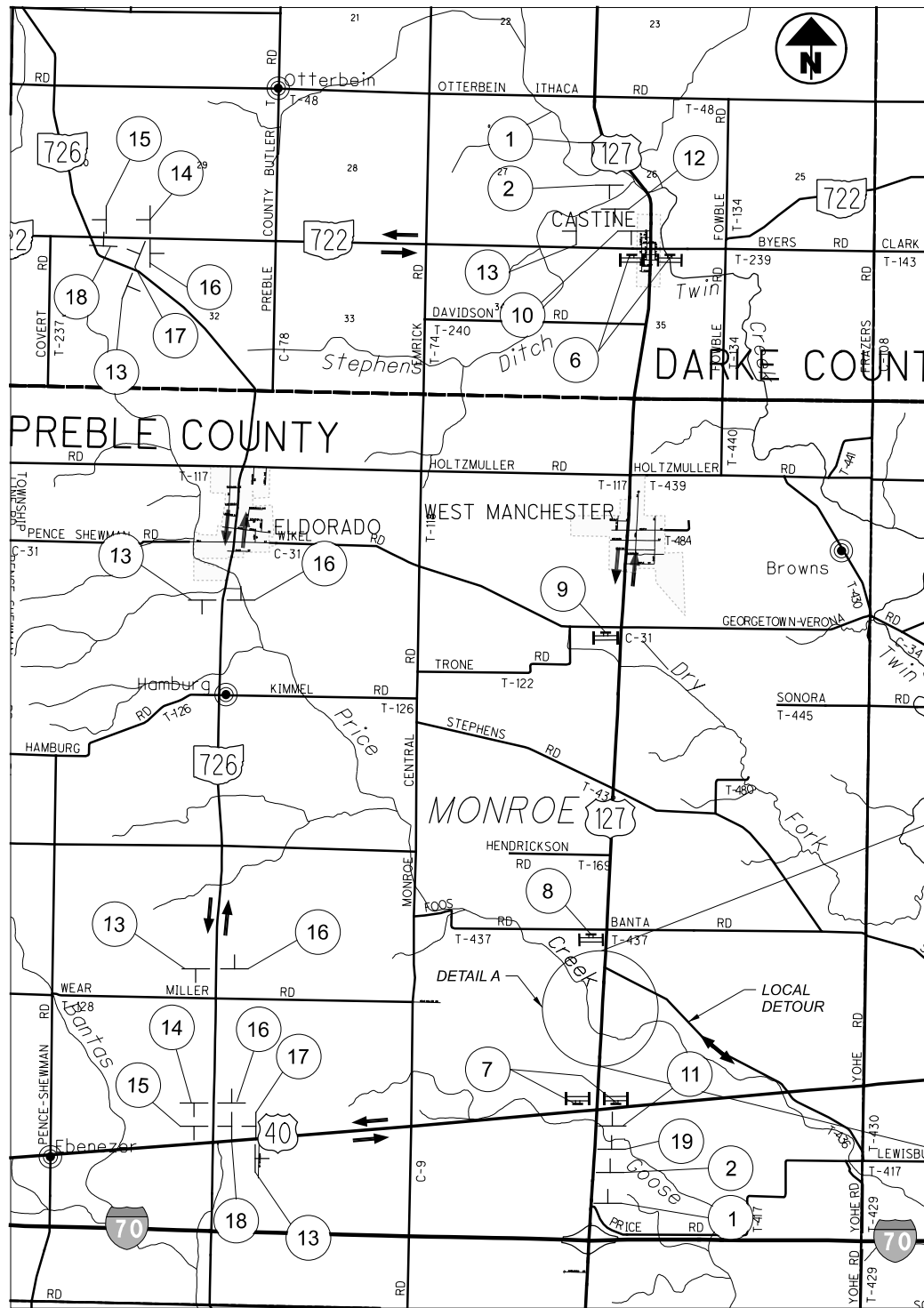
LEGEND	
DRUMS	○ ○ ○ ○ ○
COVER EXISTING MARKINGS	XXXXXXX
DIRECTION OF TRAVEL	→
TYPE 3 BARRICADE	⊥
TYPE 1 BARRICADE	#
TEMP. TRAFFIC SIGNAL	⬇
WORK ZONE	▨

- NOTES:**
- 1) REFER TO SCD MT-96.11 AND SCD MT-96.20 FOR ADDITIONAL INFORMATION.
  - 2) SEE SHEET 4 FOR SIGNAL TIMING AND POLE PLACEMENT LOCATIONS



**MAINTENANCE OF TRAFFIC PLAN  
 PRE-35-2.46 PHASE 2**

DESIGN AGENCY	
DESIGNER	GTF
REVIEWER	SK
PROJECT ID	102780
SHEET	5
TOTAL	31



DETAIL A

1 ROAD CLOSED AHEAD W20-3-36

2 DETOUR 1500 FT W20-2-36

3 ROAD CLOSED (with flashing light symbol) R11-2-48  
2 SIGNS PER DIRECTION  
ON TYPE III BARRICADES  
W/TYPE B FLASHING  
WARNING LIGHT PER SIGN

4 ROAD CLOSED 1000 FT W20-3-36

5 ROAD WORK AHEAD WITH TYPE A WARNING LIGHT W20-1-36

6 ROAD CLOSED 5 1/4 MILES AHEAD LOCAL TRAFFIC ONLY  
DETOUR (arrow pointing right) R11-3a-60  
M4-10R-48  
ON TYPE III BARRICADES

7 ROAD CLOSED 1/2 MILES AHEAD LOCAL TRAFFIC ONLY  
DETOUR (arrow pointing left) R11-3a-60  
M4-10L-48  
ON TYPE III BARRICADES

8 ROAD CLOSED 3/4 MILES AHEAD LOCAL TRAFFIC ONLY R11-3a-60  
DETOUR SOUTH  
127 (with arrow pointing right) M4-8-24  
M3-3-24  
M1-4-30-3  
M6-1-21

9 ROAD CLOSED 2 3/4 MILES AHEAD LOCAL TRAFFIC ONLY R11-3a-60

11 DETOUR NORTH 127 (with arrow pointing left) M4-8-24  
M3-3-24  
M1-4-30-3  
M6-1-21

12 DETOUR SOUTH 127 (with arrow pointing right) M4-8-24  
M3-3-24  
M1-4-30-3  
M5-1-21

13 DETOUR SOUTH 127 (with arrow pointing right) M4-8-24  
M3-3-24  
M1-4-30-3

14 DETOUR SOUTH 127 (with arrow pointing left) M4-8-24  
M3-3-24  
M1-4-30-3  
M5-1-21

15 DETOUR SOUTH 127 (with arrow pointing left) M4-8-24  
M3-3-24  
M1-4-30-3  
M6-1-21

16 DETOUR NORTH 127 (with arrow pointing right) M4-8-24  
M3-3-24  
M1-4-30-3

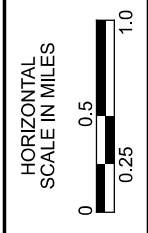
17 DETOUR NORTH 127 (with arrow pointing right) M4-8-24  
M3-3-24  
M1-4-30-3  
M5-1-21

18 DETOUR NORTH 127 (with arrow pointing right) M4-8-24  
M3-3-24  
M1-4-30-3  
M6-1-21

19 DETOUR NORTH 127 (with arrow pointing left) M4-8-24  
M3-3-24  
M1-4-30-3  
M5-1-21

20 ROAD CLOSED 500 FT W20-3-36

LEGEND	
	PROPOSED SIGN
	BARRICADE
	SIGN NUMBER
	WORK AREA
	LOCAL DETOUR ROUTE
	DESIGNATED DETOUR ROUTE




DETOUR PLAN

SHEET NUM.											PART.	ITEM	ITEM	GRAND	UNIT	DESCRIPTION	SEE SHEET NO.
3	4	8	9								01/STR/BR	EXT	TOTAL				
<b>ROADWAY</b>																	
LUMP			1,425								LUMP	201	11001	LS		CLEARING AND GRUBBING, AS PER PLAN	3
			4								1,425	202	38000	1,425	FT	GUARDRAIL REMOVED	
			4								4	202	42001	4	EACH	ANCHOR ASSEMBLY REMOVED, TYPE A, AS PER PLAN	3
			4								4	202	42010	4	EACH	ANCHOR ASSEMBLY REMOVED, TYPE E	
			2								2	202	42040	2	EACH	ANCHOR ASSEMBLY REMOVED, TYPE T	
			6								6	202	47000	6	EACH	BRIDGE TERMINAL ASSEMBLY REMOVED	
		1									1	209	15050	1	MILE	RESHAPING UNDER GUARDRAIL	
			1,425								1,425	606	15100	1,425	FT	GUARDRAIL, TYPE MGS WITH LONG POSTS	
			8								8	606	26150	8	EACH	ANCHOR ASSEMBLY, MGS TYPE E (NCHRP 350 OR MASH 2016)	
			2								2	606	26550	2	EACH	ANCHOR ASSEMBLY, MGS TYPE T	
			8								8	606	35002	8	EACH	MGS BRIDGE TERMINAL ASSEMBLY, TYPE 1	
											LUMP	878	25000	LS		INSPECTION AND COMPACTION TESTING OF UNBOUND MATERIALS	
<b>EROSION CONTROL</b>																	
1,000											1,000	659	10000	1,000	SY	SEEDING AND MULCHING	
0.1											0.1	659	20000	0.1	TON	COMMERCIAL FERTILIZER	
0.2											0.2	659	31000	0.2	ACRE	LIME	
5											5	659	35000	5	MGAL	WATER	
											5,000	832	30000	5,000	EACH	EROSION CONTROL	
<b>ENVIRONMENTAL / REMEDIATION</b>																	
LUMP											LUMP	SPECIAL	69098400	LS		MISC.: WORK INVOLVING ASBESTOS CONTAINING MATERIALS	3
<b>PAVEMENT</b>																	
		399									399	202	23500	399	SY	WEARING COURSE REMOVED	
		2,679									2,679	254	01000	2,679	SY	PAVEMENT PLANING, ASPHALT CONCRETE (T=1.5")	
		256									256	407	20000	256	GAL	NON-TRACKING TACK COAT	
		127									127	441	50000	127	CY	ASPHALT CONCRETE SURFACE COURSE, TYPE 1, (448), PG64-22	
		40									40	441	50200	40	CY	ASPHALT CONCRETE INTERMEDIATE COURSE, TYPE 1, (448) (VARIABLE FROM 0" TO 3")	
<b>TRAFFIC CONTROL</b>																	
46											46	626	00110	46	EACH	BARRIER REFLECTOR, TYPE 2 (BI-DIRECTIONAL)	
11											11	621	00100	11	EACH	RPM	
11											11	621	54000	11	EACH	RAISED PAVEMENT MARKER REMOVED	
2											2	630	84900	2	EACH	REMOVAL OF GROUND MOUNTED SIGN AND DISPOSAL	
2											2	630	86002	2	EACH	REMOVAL OF GROUND MOUNTED POST SUPPORT AND DISPOSAL	
0.44											0.44	645	00116	0.44	MILE	EDGE LINE, 6", TYPE A3	
0.22											0.22	645	00310	0.22	MILE	CENTER LINE, TYPE A3	
0.04											0.04	646	10010	0.04	MILE	EDGE LINE, 6"	
0.02											0.02	646	10200	0.02	MILE	CENTER LINE	
<b>STRUCTURE OVER 20 FOOT SPAN (PRE-35-0246 SFN: 6800076)</b>																	
<b>STRUCTURE OVER 20 FOOT SPAN (PRE-127-2049 SFN: 6802796)</b>																	
<b>MAINTENANCE OF TRAFFIC</b>																	
4											4	614	12384	4	EACH	WORK ZONE IMPACT ATTENUATOR, 24" WIDE HAZARDS, (BIDIRECTIONAL)	
0.13											0.13	614	22210	0.13	MILE	WORK ZONE EDGE LINE, CLASS I, 6", 740.06, TYPE I	
36											36	614	26400	36	FT	WORK ZONE STOP LINE, CLASS I, 740.06, TYPE I	
0.19											0.19	614	21550	0.19	MILE	WORK ZONE CENTER LINE, CLASS III, 642 PAINT	
430											430	622	41100	430	FT	PORTABLE BARRIER, UNANCHORED	
40											40	622	41110	40	FT	PORTABLE BARRIER, ANCHORED	
12											12	614	13310	12	EACH	BARRIER REFLECTOR, TYPE 1 (BI-DIRECTIONAL)	
12											12	614	13360	12	EACH	OBJECT MARKER, TWO WAY	
											LUMP	615	10000	LS		ROADS FOR MAINTAINING TRAFFIC	3
<b>INCIDENTALS</b>																	
											LUMP	614	11000	LS		MAINTAINING TRAFFIC	
											LUMP	623	10000	LS		CONSTRUCTION LAYOUT STAKES AND SURVEYING	
											LUMP	624	10000	LS		MOBILIZATION	

GENERAL SUMMARY

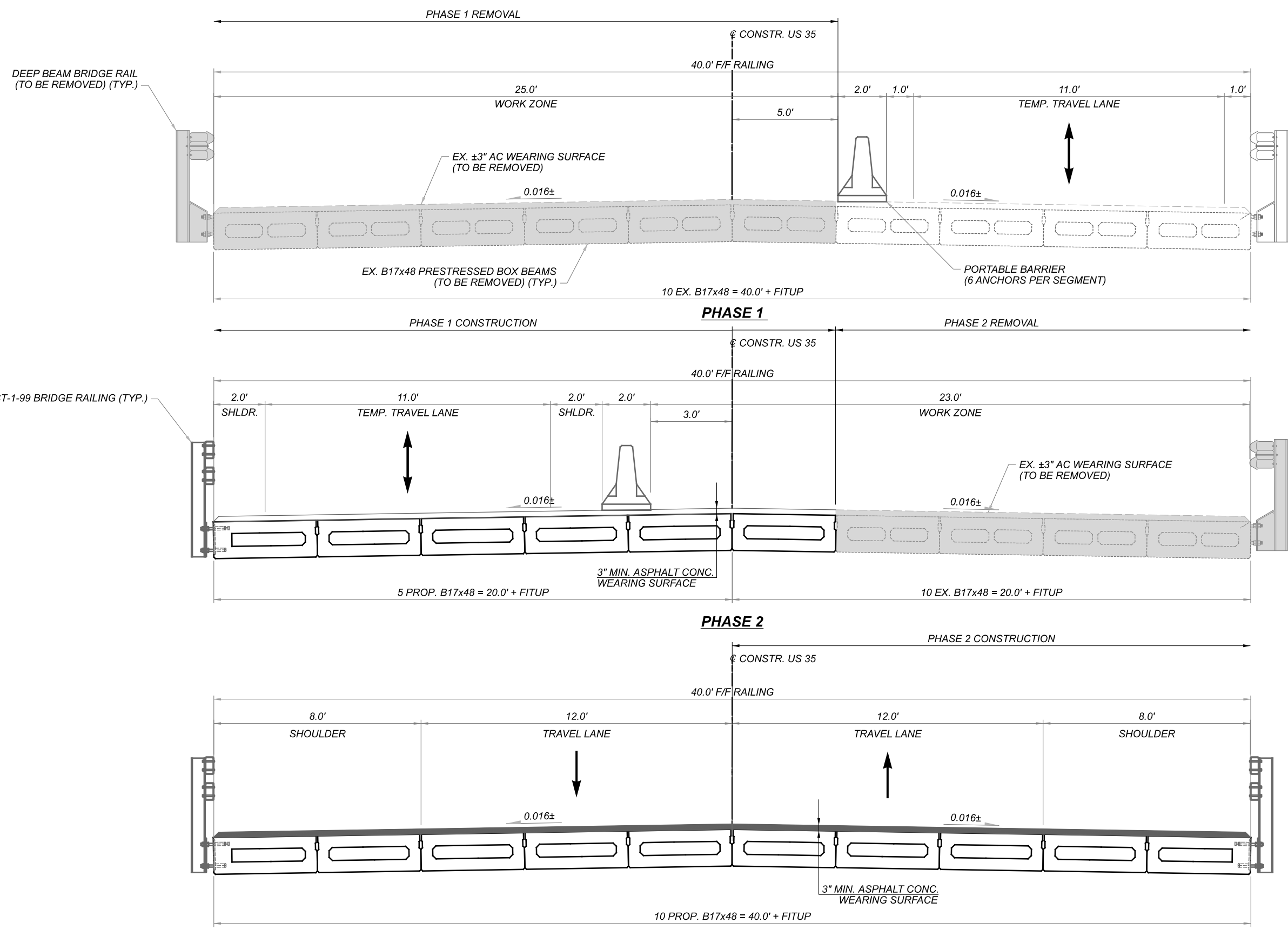
DESIGN AGENCY



DESIGNER: GTF  
 REVIEWER: JAO  
 PROJECT ID: 102780  
 SHEET: 8 TOTAL: 31

PRE-35/127-2.46/20.49

MODEL: Sheet PAPER: 17x11 (in.) DATE: 11/3/2021 TIME: 5:15:12 AM USER: gfreeman  
 p:\v\hobol-pw-bentley.com\shahid-pw-102\Documents\01 Active Projects\Distict 08\Preble\102780\400-Engineering\MOT\Sheets\102780\_MH001.dgn



**LEGEND**  
 [Shaded Box] - ITEM 202, PORTIONS OF STRUCTURE REMOVED, OVER 20 FOOT SPAN

PHASE CONSTRUCTION DETAILS  
 BRIDGE No.: PRE-35-0246  
 U.S. 35 OVER ELKHORN CREEK

SFN	6800076
DESIGN AGENCY	[Logo]
DESIGNER/CHECKER	GTF
REVIEWER	CAH
PROJECT ID	102780
SUBSET	3
TOTAL	10
SHEET	14
TOTAL	31