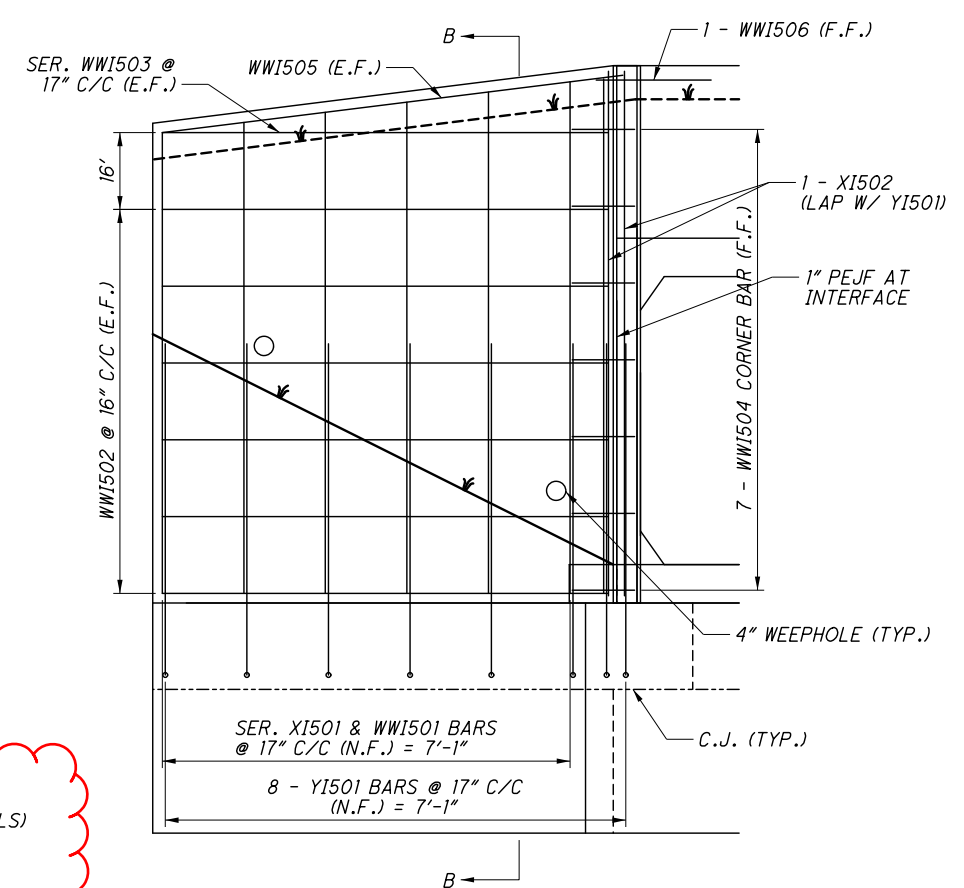
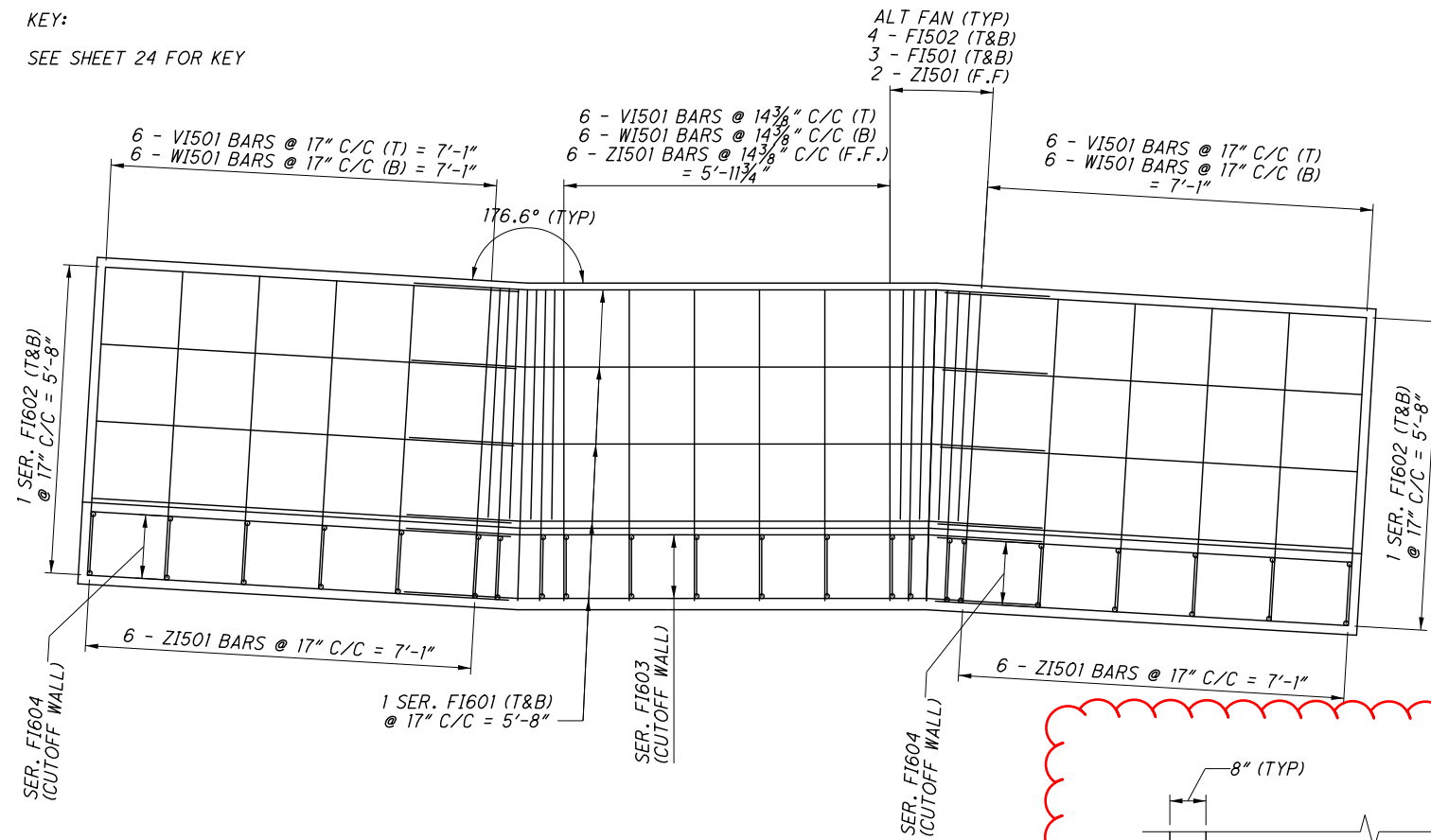


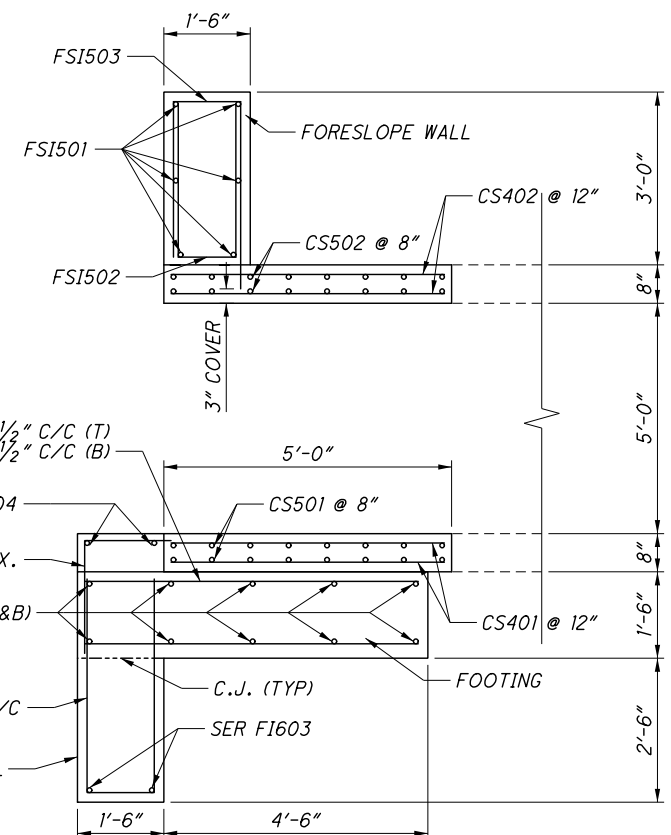
KEY:
SEE SHEET 24 FOR KEY



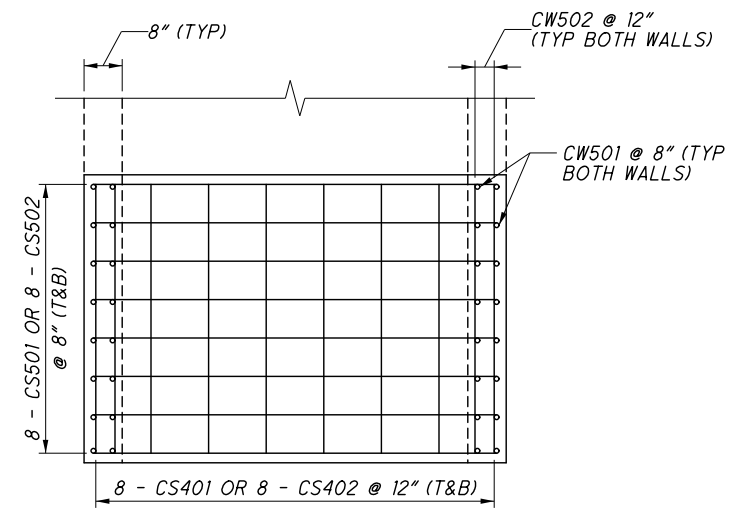
INLET FOOTER REINFORCEMENT

INLET WINGWALL REINFORCEMENT

HEADWALL AND FOOTER REINFORCING NOT SHOWN FOR CLARITY FORWARD WINGWALL SHOWN, REAR SIMILAR

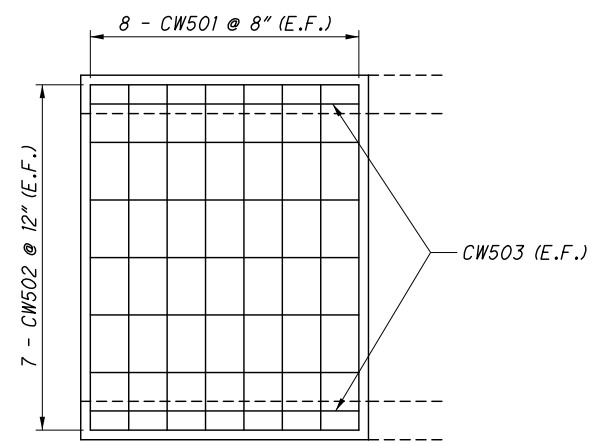


SECTION A-A



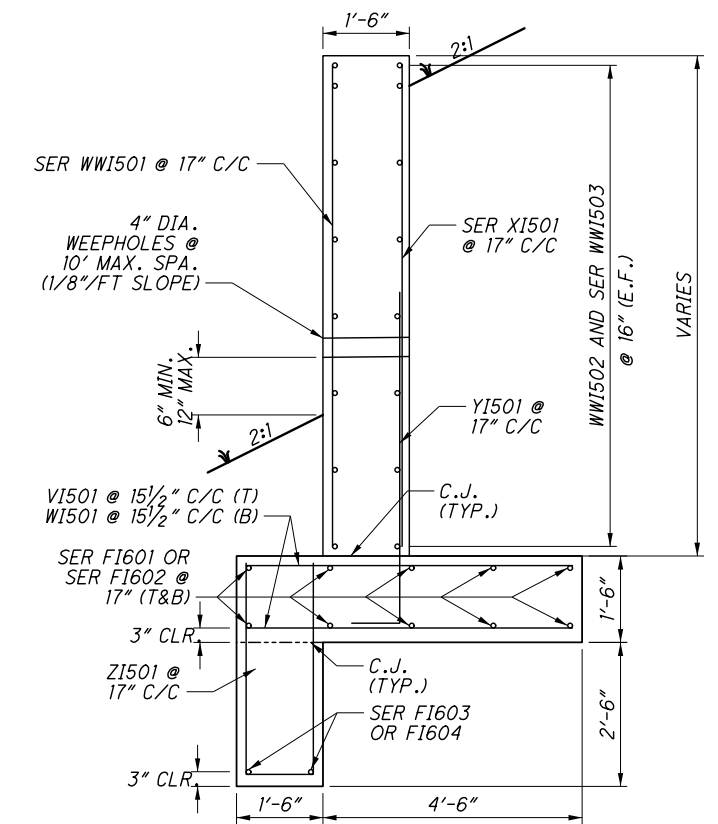
CULVERT EXTENSION LAYOUT (TOP AND BOTTOM SLAB)

DETAIL TYPICAL FOR BOTH ENDS OF CULVERT HEADWALL, WINGWALL, AND FOOTER DETAILS NOT SHOWN FOR CLARITY SEE SHEET 26 FOR REINFORCING STEEL SCHEDULE



CULVERT EXTENSION LAYOUT (VERTICAL WALLS)

DETAIL TYPICAL FOR BOTH ENDS OF CULVERT HEADWALL, WINGWALL, AND FOOTER DETAILS NOT SHOWN FOR CLARITY SEE SHEET 26 FOR REINFORCING STEEL SCHEDULE



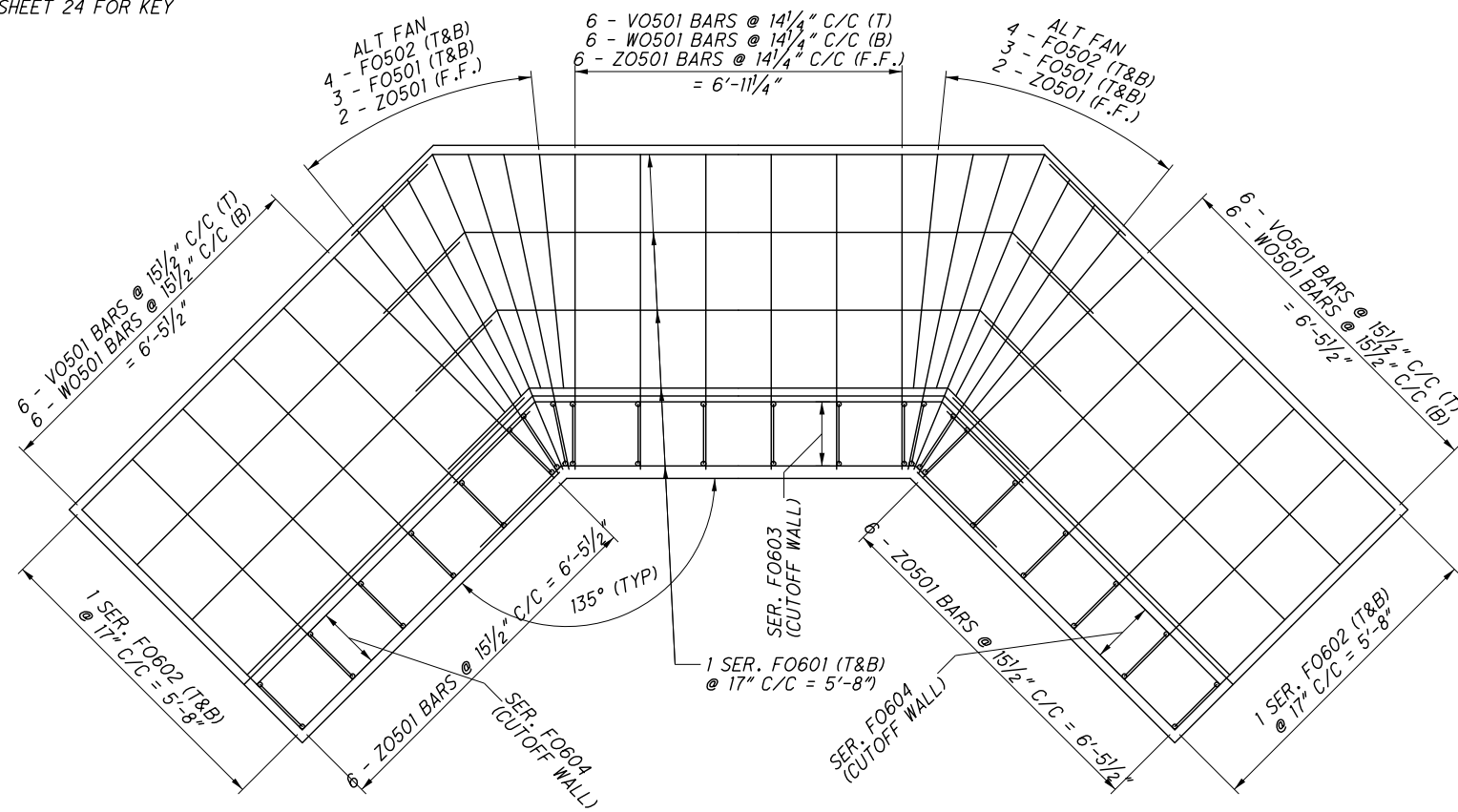
SECTION B-B

CALCULATED
ACM
CHECKED
JNC

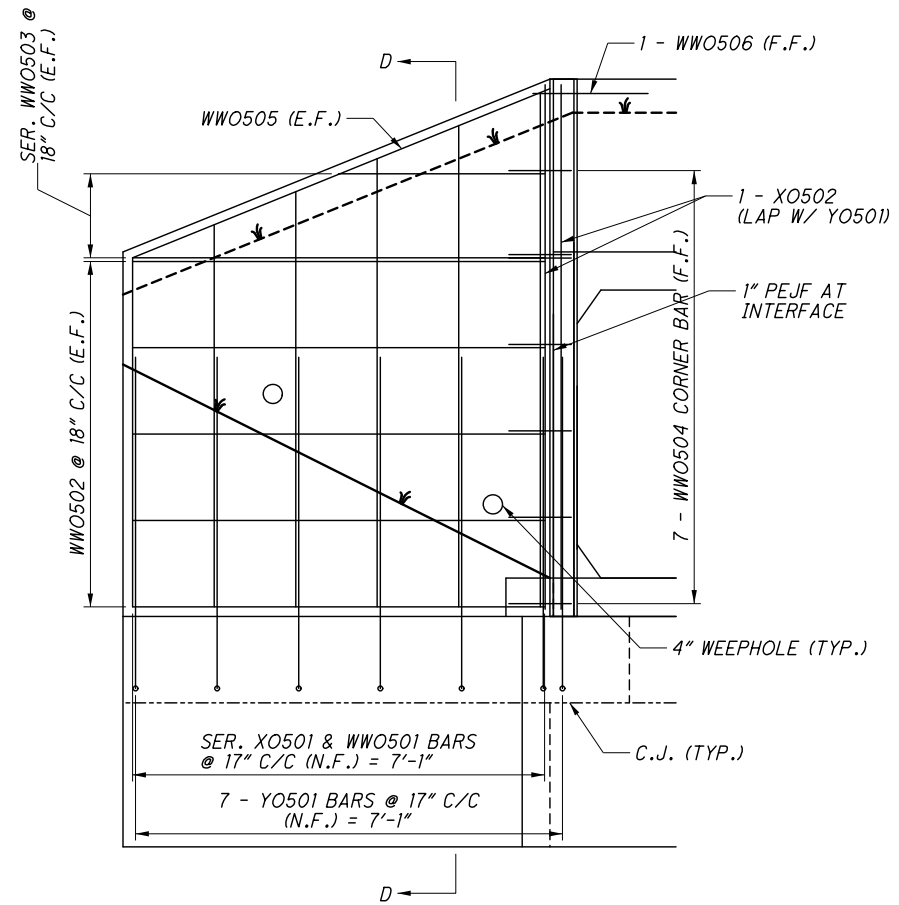
HEADWALL DETAILS
RIC-42-6.51

RIC-42-6.51
RIC-42-6.74

KEY:
SEE SHEET 24 FOR KEY

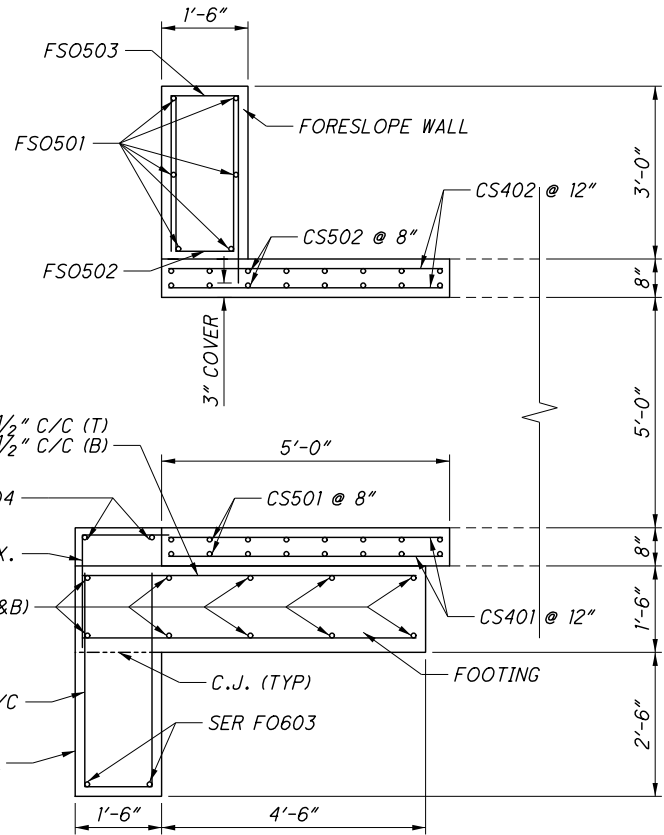


OUTLET FOOTER REINFORCEMENT

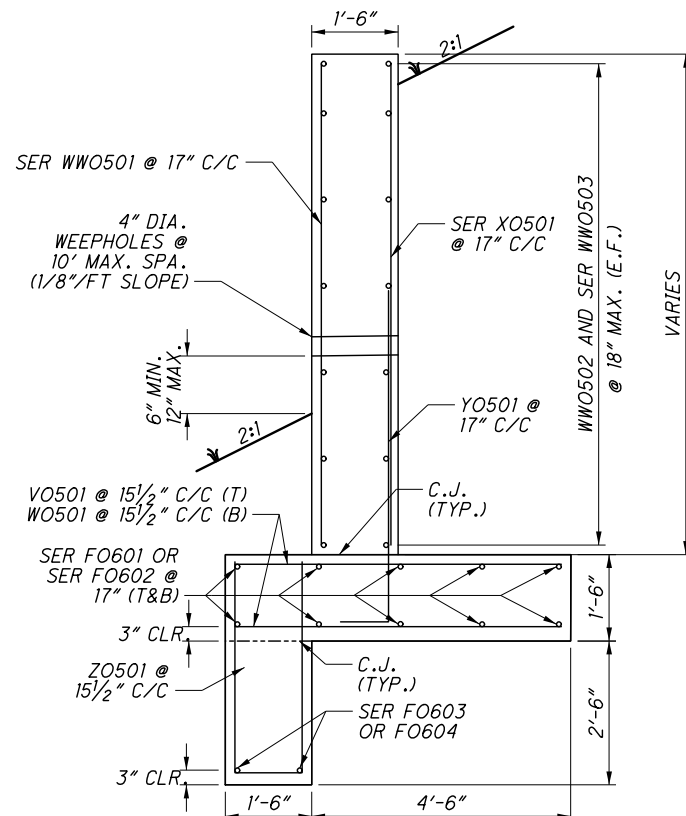


OUTLET WINGWALL REINFORCEMENT

HEADWALL AND FOOTER REINFORCING NOT SHOWN FOR CLARITY
FORWARD WINGWALL SHOWN, REAR SIMILAR



SECTION C-C



SECTION D-D

CAST-IN-PLACE BOX CULVERT REINFORCING SCHEDULE - TYPICAL BOTH ENDS				
BAR MARK	NUMBER	LENGTH	WEIGHT (LBS.)	TYPE
BOX CULVERT				
CS401	16	4'- 8"	64	STR.
CS402	16	4'- 8"	64	STR.
CS501	16	7'- 0"	128	STR.
CS502	16	7'- 0"	128	STR.
CW501	32	6'- 0"	224	STR.
CW502	28	4'- 8"	140	STR.
CW503	8	6'- 0"	40	STR.
TOTAL			788	

NOTES:
1.) THE REINFORCING STEEL IN THE ABOVE TABLE IS INCLUDED UNDER ITEM 611 - 6' X 5' CONDUIT, TYPE A, T06.05, AS PER PLAN.

CALCULATED
ACM
CHECKED
JNC

HEADWALL DETAILS
RIC-42-6.51

RIC-42-6.51
RIC-42-6.74