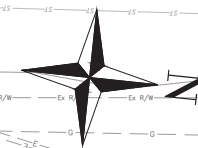


SECTION A



Existing
Location 1
1865618490025
STA 140+00.0 @ 75.7 RT
45' 3
Replace
8' x-arm w/ 2-8' x-arm
DS 316-A, 325

Remove
Location 35, UDG Location 35
1865710490240
STA 142+01.0 @ 9.3 RT
45' 3
Remove all facilities
Note:
Transfer capacitor and AMI bracket
to Location 2

ODOT Owned Meter Location
& ODOT UG Service Riser for
379 Stewart Rd

Remove
Location 36, UDG Location 36
1865784490347
STA 143+26.8 @ 36.5 RT
45' 3
Remove all facilities

Remove
Location 42
1865444490485
STA 68+88.6 @ 37.7 LT
35' 5
Remove all facilities

Remove
Location 41
1865529490492
STA 69+76.6 @ 45.6 LT
35' 5
Remove all facilities

Remove
Location 40
1865613490501
STA 70+56.5 @ 61.9 LT
35' 5
Remove all facilities

Remove
Location 39
1865699490512
STA 71+42 @ 70 LT
35' 5
Remove all facilities

Remove
Location 38
1865709490560
STA 71+33 @ 112 LT
35' 5
Remove all facilities

Install
Location 2, UDG Location 2
1865738490225
STA 142+01.0 @ 37.6 RT
50' 3
2-10' x-arms
900 KVAR R
AMI Bracket (WR#86911091)
2-3/8" Down Guy, 8" DHM Anc.
DS 305, 976, 1904
Note:
Transfer capacitor and AMI bracket
from Location 33

Install
Location 3
1865778490317
STA 142+85.4 @ 55.7 RT
50' 2
8' x-arm
DS 301

Install
Location 4, UDG Location 4
1865784490347
STA 143+30.1 @ 61.2 RT
50' ST-D
12' Fiberglass arm
3-10T Fuse φABC
3" Stand Off Riser
DS 303, 2007-B

Remove
Location 37, UDG Location 37
1865792490376
STA 80+49.0 @ 40.6 RT
40' 5
Remove all facilities

Install
Location 5, UDG Location 5
1865833490503
STA 150+82.9 @ 37.2 LT
45' 3
2-9' x-arms
6" Standoff Riser
2-1/2" Down guy, 10" DHM Anc.
3/8" Down guy, 8" EXP Anc.
DS 316, 2314

Existing
Location 6, UDG Location 6
1865832490586
STA 81+92.2 @ 88.8 LT
35' 5
Install
3" Secondary Stand Off Riser
DS 501, 2007-B

Existing
Location 7, UDG Location 7
1865850490676
STA 82+47.0 @ 169.3 LT
35' 5
Install
3" Secondary Stand Off Riser
DS 501, 2007-B

Priority for AEP Relocation/Removal Work

#1 - All Work shown on this sheet 1 of 3 near Nurse Automall and proposed Roundabout.

#2 - All Work from Pawnee Rd (Sta 749+42.8) intersection to Sta 755+78.9.

#3 - All Work shown on sheet 2 of 3.

#4 - Remaining Work on sheet 3.

JOB SCOPE: PPR-ROS-159-0.41 - Bridge Street		NON DESIGN ORDERS	
LOCATION: 284 Bridge Street, Bridge Street at Marietta Dr		OWR:	
CITY: Chillicothe		OPS:	
TWP:		OWR:	
COUNTY: Ross		OPS:	
OH: 85129271	WO:	QUAD:	
UG: 86889832	WO:	MAP: Chillicothe	
AREA: Chillicothe - 046		SCALE: 1:30	
STATION: ROSS - 0226		TECH/ENG: Karl Erdmann (TRC)	
CIRCUIT: 0022602		CONTACT # (614) 636-6025	
VOLTAGE: 12.47 kV		DATE: 07/03/2024	
AEP OHIO		SHEET 1 of 3	
		REV	

SECTION A

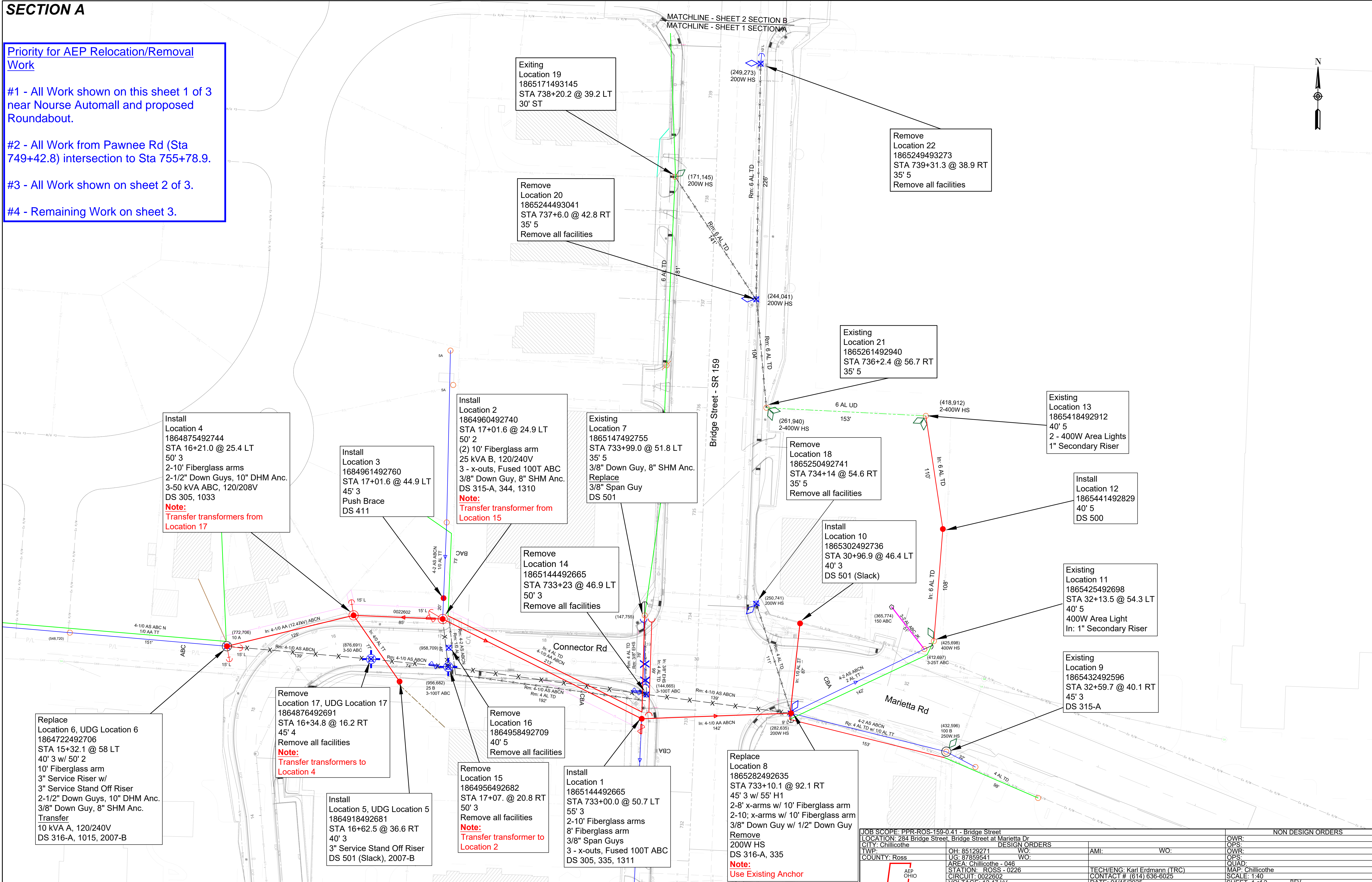
Priority for AEP Relocation/Removal Work

#1 - All Work shown on this sheet 1 of 3 near Nourse Automall and proposed Roundabout.

#2 - All Work from Pawnee Rd (Sta 749+42.8) intersection to Sta 755+78.9.

#3 - All Work shown on sheet 2 of 3.

#4 - Remaining Work on sheet 3.



Replace Location 6, UDG Location 6
1864722492706
STA 15+32.1 @ 58 LT
40' 3 w/ 50' 2
10' Fiberglass arm
3" Service Riser w/
3" Service Stand Off Riser
2-1/2" Down Guys, 10" DHM Anc.
3/8" Down Guy, 8" SHM Anc.
Transfer
10 kVA A, 120/240V
DS 316-A, 1015, 2007-B

Install Location 4
1864875492744
STA 16+21.0 @ 25.4 LT
50' 3
2-10' Fiberglass arms
2-1/2" Down Guys, 10" DHM Anc.
3-50 kVA ABC, 120/208V
DS 305, 1033
Note:
Transfer transformers from Location 17

Install Location 3
1684961492760
STA 17+01.6 @ 44.9 LT
45' 3
Push Brace
DS 411

Install Location 2
1864960492740
STA 17+01.6 @ 24.9 LT
50' 2
(2) 10' Fiberglass arm
25 kVA B, 120/240V
3 - x-outs, Fused 100T ABC
3/8" Down Guy, 8" SHM Anc.
DS 315-A, 344, 1310
Note:
Transfer transformer from Location 15

Existing Location 7
1865147492755
STA 733+99.0 @ 51.8 LT
35' 5
3/8" Down Guy, 8" SHM Anc.
Replace
3/8" Span Guy
DS 501

Remove Location 14
1865144492665
STA 733+23 @ 46.9 LT
50' 3
Remove all facilities

Remove Location 16
1864958492709
40' 5
Remove all facilities

Remove Location 15
1864956492682
STA 17+07. @ 20.8 RT
50' 3
Remove all facilities
Note:
Transfer transformer to Location 2

Install Location 5, UDG Location 5
1864918492681
STA 16+62.5 @ 36.6 RT
40' 3
3" Service Stand Off Riser
DS 501 (Slack), 2007-B

Remove Location 17, UDG Location 17
1864876492691
STA 16+34.8 @ 16.2 RT
45' 4
Remove all facilities
Note:
Transfer transformers to Location 4

Install Location 1
1865144492665
STA 733+00.0 @ 50.7 LT
55' 3
2-10' Fiberglass arms
8' Fiberglass arm
3/8" Span Guys
3 - x-outs, Fused 100T ABC
DS 305, 335, 1311

Replace Location 8
1865282492635
STA 733+10.1 @ 92.1 RT
45' 3 w/ 55' H1
2-8' x-arms w/ 10' Fiberglass arm
2-10' x-arms w/ 10' Fiberglass arm
3/8" Down Guy w/ 1/2" Down Guy
Remove
200W HS
DS 316-A, 335
Note:
Use Existing Anchor

Existing Location 19
1865171493145
STA 738+20.2 @ 39.2 LT
30' ST

Remove Location 20
1865244493041
STA 737+6.0 @ 42.8 RT
35' 5
Remove all facilities

Remove Location 22
1865249493273
STA 739+31.3 @ 38.9 RT
35' 5
Remove all facilities

Existing Location 21
1865261492940
STA 736+2.4 @ 56.7 RT
35' 5

Existing Location 13
1865418492912
40' 5
2 - 400W Area Lights
1" Secondary Riser

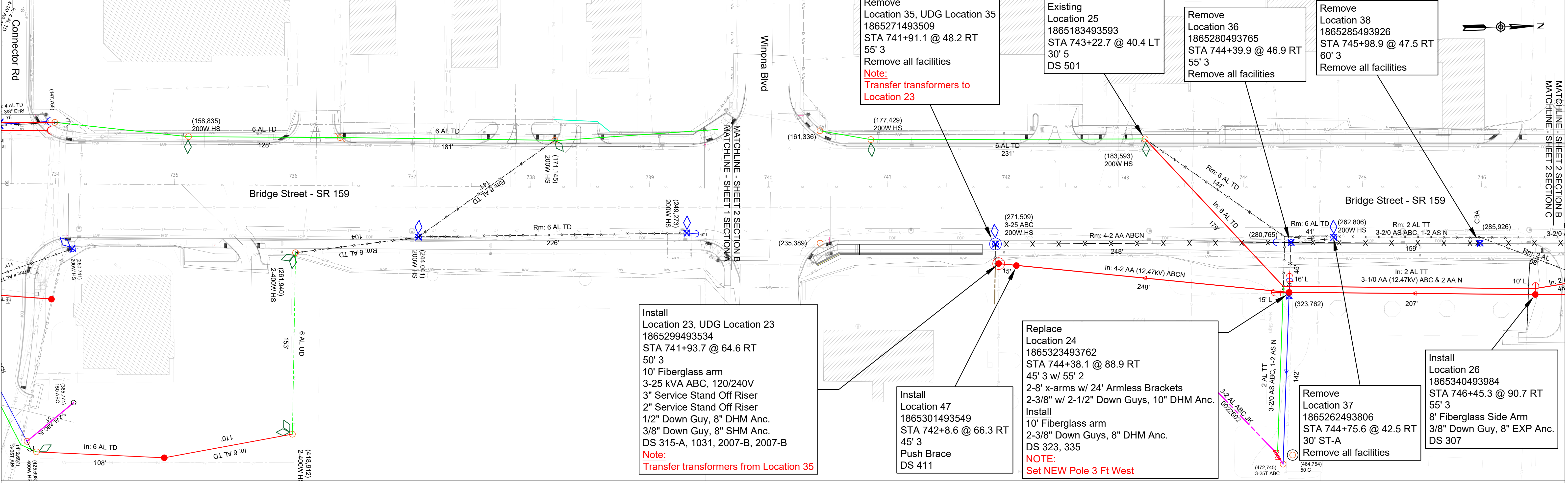
Install Location 12
1865441492829
40' 5
DS 500

Existing Location 11
1865425492698
STA 32+13.5 @ 54.3 LT
40' 5
400W Area Light
In: 1" Secondary Riser

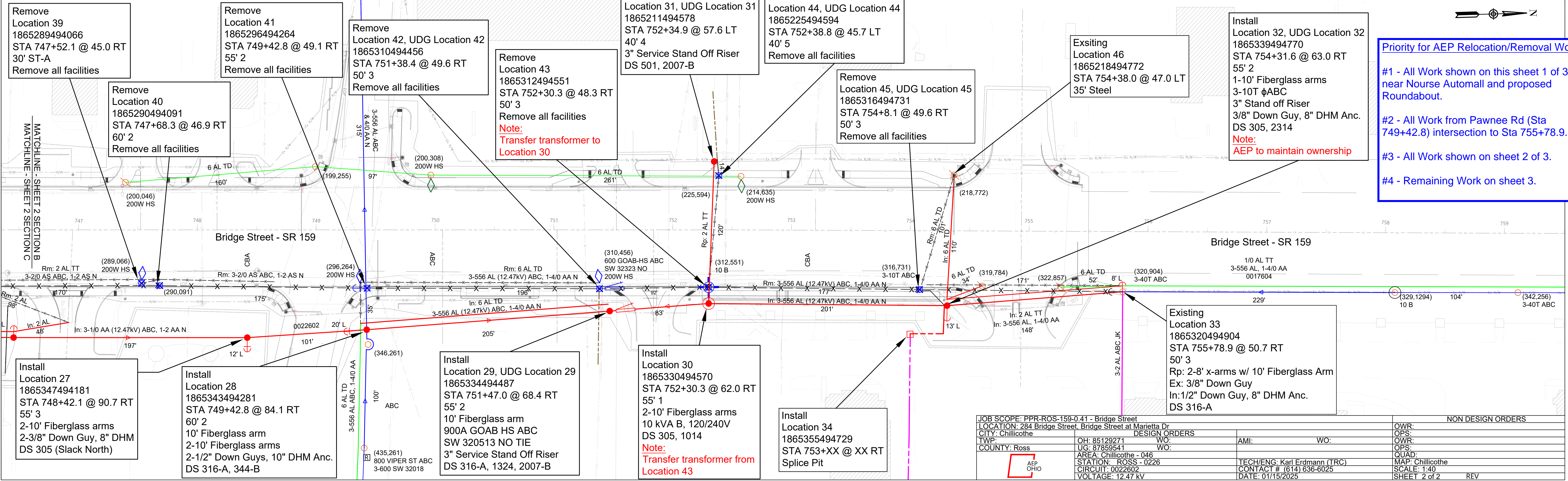
Existing Location 9
1865432492596
STA 32+59.7 @ 40.1 RT
45' 3
DS 315-A

JOB SCOPE: PPR-ROS-159-0.41 - Bridge Street		NON DESIGN ORDERS	
LOCATION: 284 Bridge Street, Bridge Street at Marietta Dr			
CITY: Chillicothe			
TWP: Ross			
COUNTY: Ross			
OH: 85129271	WO:	AMI:	WO:
UG: 87859541	WO:		
AREA: Chillicothe - 046			
STATION: ROSS - 0226		TECH/ENG: Karl Erdmann (TRC)	
CIRCUIT: 0022602		CONTACT # (614) 636-6025	
VOLTAGE: 12.47 kV		DATE: 01/15/2025	
		SCALE: 1:40	
		MAP: Chillicothe	
		SHEET 1 of 2	
		REV	

SECTION B



SECTION C



Priority for AEP Relocation/Removal Work

- #1 - All Work shown on this sheet 1 of 3 near Nourse Automall and proposed Roundabout.
- #2 - All Work from Pawnee Rd (Sta 749+42.8) intersection to Sta 755+78.9.
- #3 - All Work shown on sheet 2 of 3.
- #4 - Remaining Work on sheet 3.

JOB SCOPE: PPR-ROS-159-0.41 - Bridge Street		NON DESIGN ORDERS	
LOCATION: 284 Bridge Street, Bridge Street at Marietta Dr			
CITY: Chillicothe	DESIGN ORDERS	OWR:	
TWP:	OH: 85129271	OPS:	
COUNTY: Ross	US: 87859541	OWR:	
	WO:	OPS:	
	WO:	OWR:	
	WO:	OPS:	
AREA: Chillicothe - 046	TECH/ENG: Karl Erdmann (TRC)	SCALE: 1:40	
STATION: ROSS - 0226	CONTACT # (614) 636-6025	SHEET 2 of 2	REV
CIRCUIT: 0022602	DATE: 01/15/2025		
VOLTAGE: 12.47 kV			