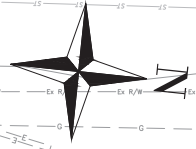


SECTION A



Existing
Location 1
1865618490025
STA 140+00.0 @ 75.7 RT
45' 3
Replace
8' x-arm w/ 2-8' x-arm
DS 316-A, 325

Remove
Location 35, UDG Location 35
1865710490240
STA 142+01.0 @ 9.3 RT
45' 3
Remove all facilities
Note:
Transfer capacitor and AMI bracket
to Location 2

ODOT Owned Meter Location
& ODOT UG Service Riser for
379 Stewart Rd

Remove
Location 36, UDG Location 36
1865784490347
STA 143+26.8 @ 36.5 RT
45' 3
Remove all facilities

Remove
Location 42
1865444490485
STA 68+88.6 @ 37.7 LT
35' 5
Remove all facilities

Remove
Location 41
1865529490492
STA 69+76.6 @ 45.6 LT
35' 5
Remove all facilities

Remove
Location 40
1865613490501
STA 70+56.5 @ 61.9 LT
35' 5
Remove all facilities

Remove
Location 39
1865699490512
STA 71+42 @ 70 LT
35' 5
Remove all facilities

Remove
Location 38
1865709490560
STA 71+33 @ 112 LT
35' 5
Remove all facilities

Install
Location 2, UDG Location 2
1865738490225
STA 142+01.0 @ 37.6 RT
50' 3
2-10' x-arms
900 KVAR R
AMI Bracket (WR#86911091)
2-3/8" Down Guy, 8" DHM Anc.
DS 305, 976, 1904
Note:
Transfer capacitor and AMI bracket
from Location 33

Install
Location 3
1865778490317
STA 142+85.4 @ 55.7 RT
50' 2
8' x-arm
DS 301

Install
Location 4, UDG Location 4
1865784490347
STA 143+30.1 @ 61.2 RT
50' ST-D
12' Fiberglass arm
3-10T Fuse φABC
3" Stand Off Riser
DS 303, 2007-B

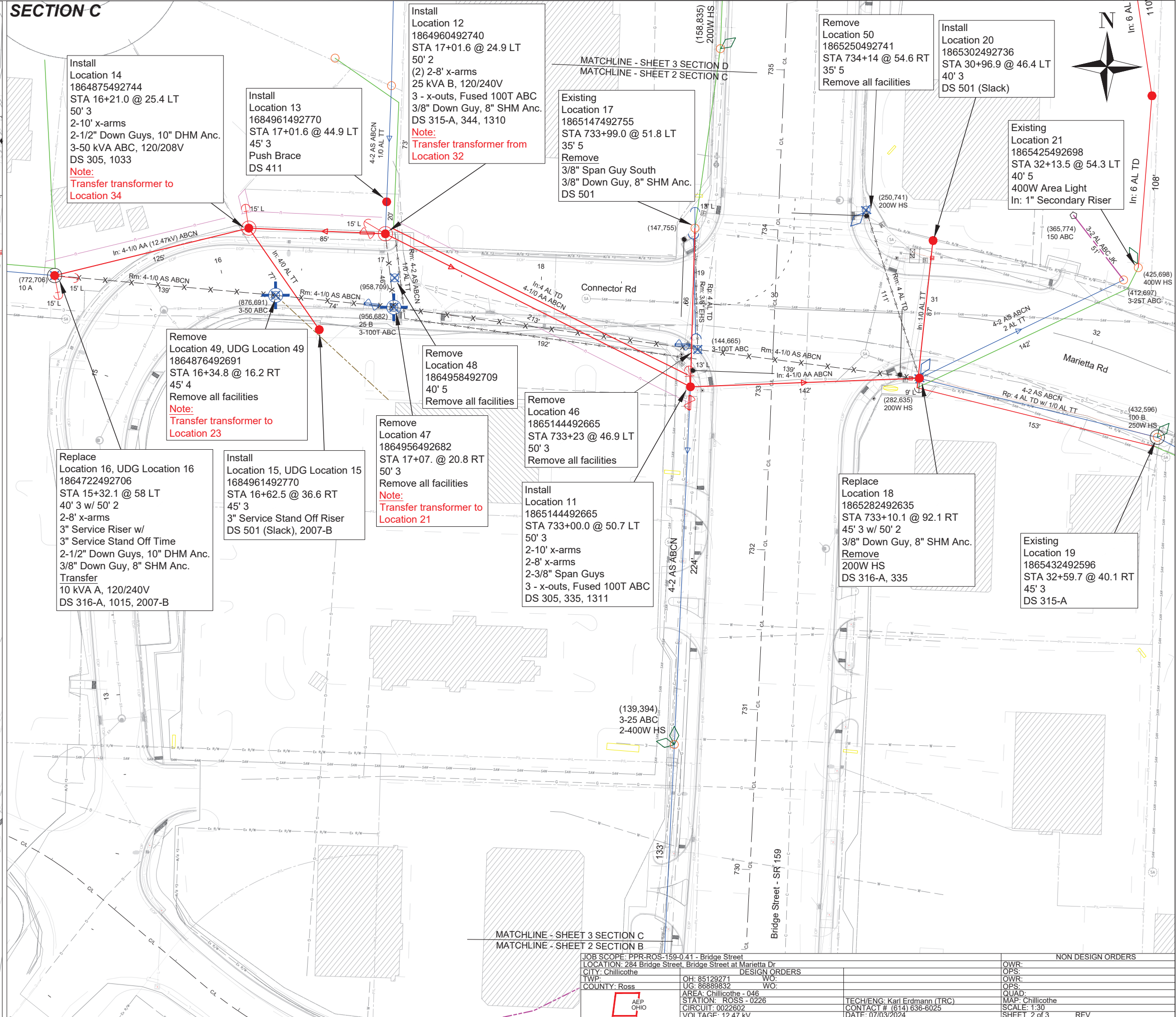
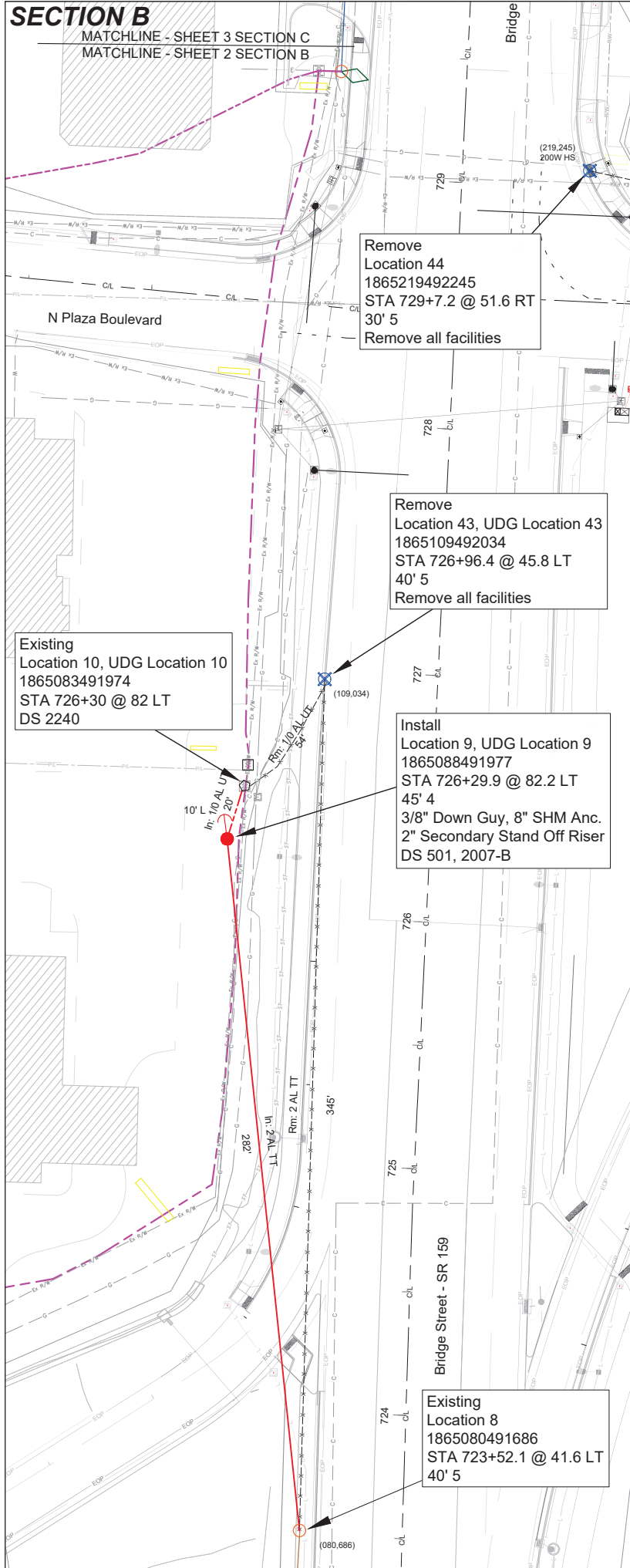
Remove
Location 37, UDG Location 37
1865792490376
STA 80+49.0 @ 40.6 RT
40' 5
Remove all facilities

Install
Location 5, UDG Location 5
1865833490503
STA 150+82.9 @ 37.2 LT
45' 3
2-9' x-arms
6" Standoff Riser
2-1/2" Down guy, 10" DHM Anc.
3/8" Down guy, 8" EXP Anc.
DS 316, 2314

Existing
Location 6, UDG Location 6
1865832490586
STA 81+92.2 @ 88.8 LT
35' 5
Install
3" Secondary Stand Off Riser
DS 501, 2007-B

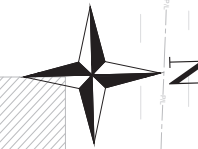
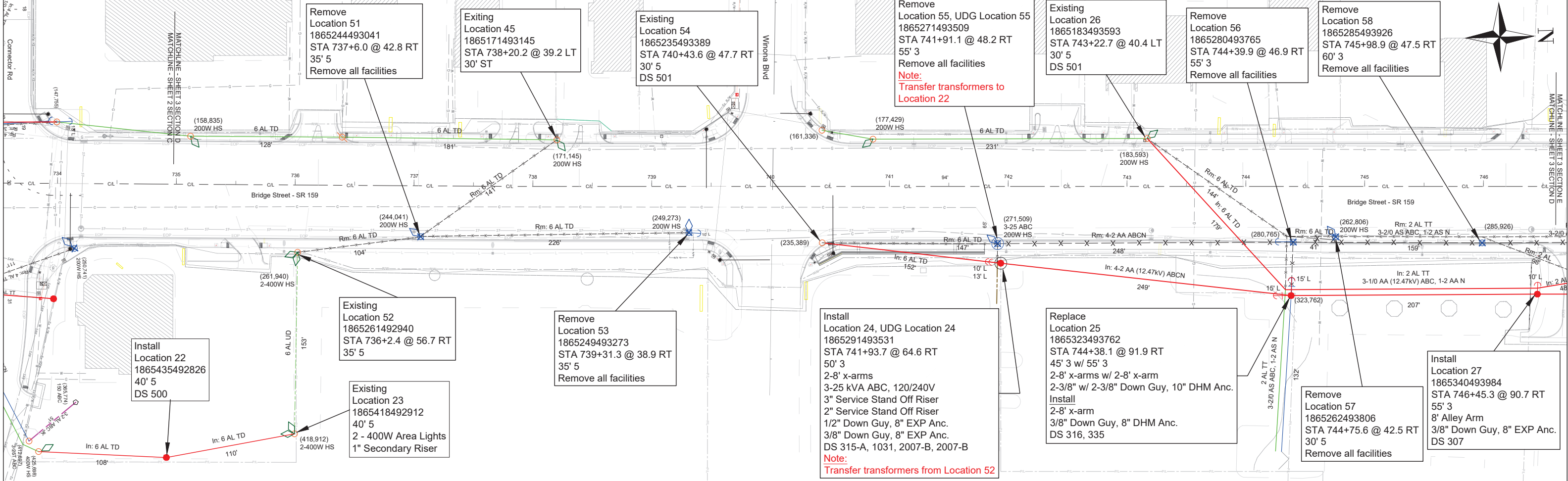
Existing
Location 7, UDG Location 7
1865850490676
STA 82+47.0 @ 169.3 LT
35' 5
Install
3" Secondary Stand Off Riser
DS 501, 2007-B

JOB SCOPE: PPR-ROS-159-0.41 - Bridge Street		NON DESIGN ORDERS	
LOCATION: 284 Bridge Street, Bridge Street at Marietta Dr		OWR:	
CITY: Chillicothe		OPS:	
TWP:		OWR:	
COUNTY: Ross		OPS:	
OH: 85129271	WO:	QUAD:	
UG: 86889832	WO:	MAP: Chillicothe	
AREA: Chillicothe - 046	TECH/ENG: Karl Erdmann (TRC)	SCALE: 1:30	
STATION: ROSS - 0226	CONTACT # (614) 636-6025	SHEET 1 of 3	
CIRCUIT: 0022602	DATE: 07/03/2024	REV	
VOLTAGE: 12.47 kV			

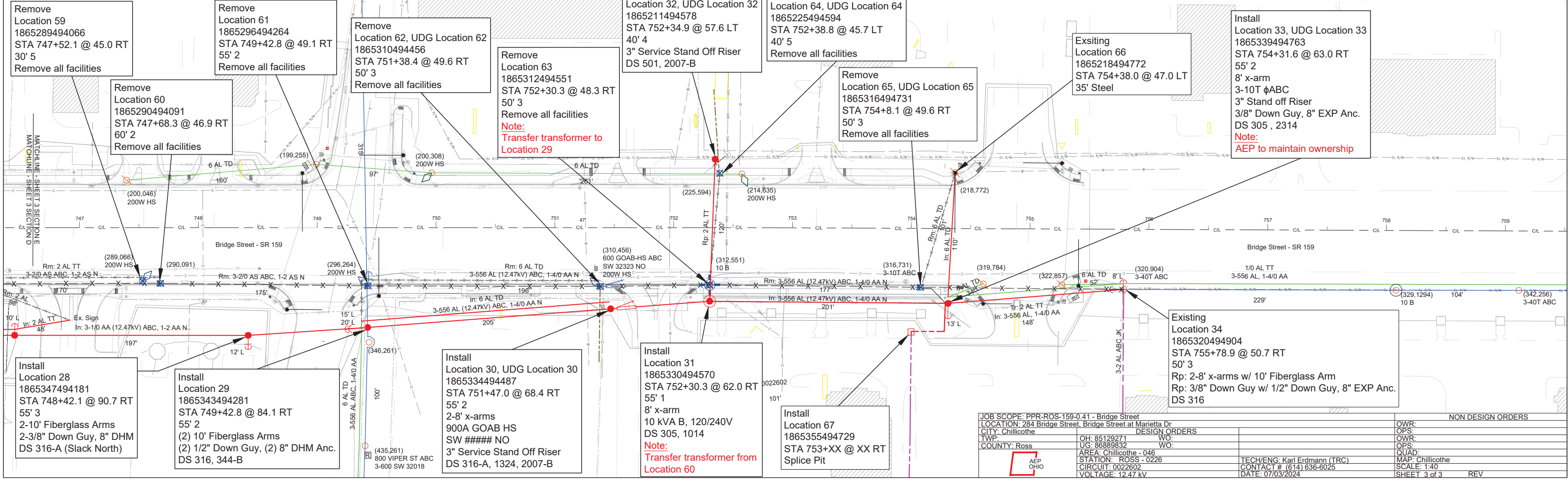


JOB SCOPE: PPR-ROS-159-0.41 - Bridge Street		NON DESIGN ORDERS	
LOCATION: 284 Bridge Street, Bridge Street at Marietta Dr		DESIGN ORDERS	
CITY: Chillicothe	TWP: Ross	OH: 85129271	UG: 86889832
COUNTY: Ross	AREA: Chillicothe - 046	STATION: ROSS - 0226	CIRCUIT: 0022602
	VOLTAGE: 12.47 kV	TECH/ENG: Karl Erdmann (TRC)	CONTACT # (614) 636-6025
		DATE: 07/03/2024	SHEET 2 of 3

SECTION D



SECTION E



JOB SCOPE: PPR-ROS-159-0.41 - Bridge Street		NON DESIGN ORDERS	
LOCATION: 284 Bridge Street, Bridge Street at Marietta Dr		DESIGN ORDERS	
CITY: Chillicothe		WO:	
TWP: Ross		WO:	
COUNTY: Ross		WO:	
OH: 85129271		AREA: Chillicothe - 046	
UG: 86889832		STATION: ROSS - 0226	
CIRCUIT: 0022602		TECH/ENG: Karl Erdmann (TRC)	
VOLTAGE: 12.47 kV		CONTACT # (614) 636-6025	
AEP OHIO		DATE: 07/03/2024	
		SCALE: 1:40	
		SHEET 3 of 3	
		REV	