

# SHE-SPRUC-02270

CITY OF SIDNEY  
CLINTON TOWNSHIP  
SEC 1 & 36, T8N, R6E  
SHELBY COUNTY, OHIO

RAILROAD PLAT

DESIGN AGENCY  
CHOICE ONE ENGINEERING

DESIGNER  
BHB  
REVIEWER  
WDG  
PROJECT ID  
114201  
SUBSET TOTAL  
RW.12 RW.12

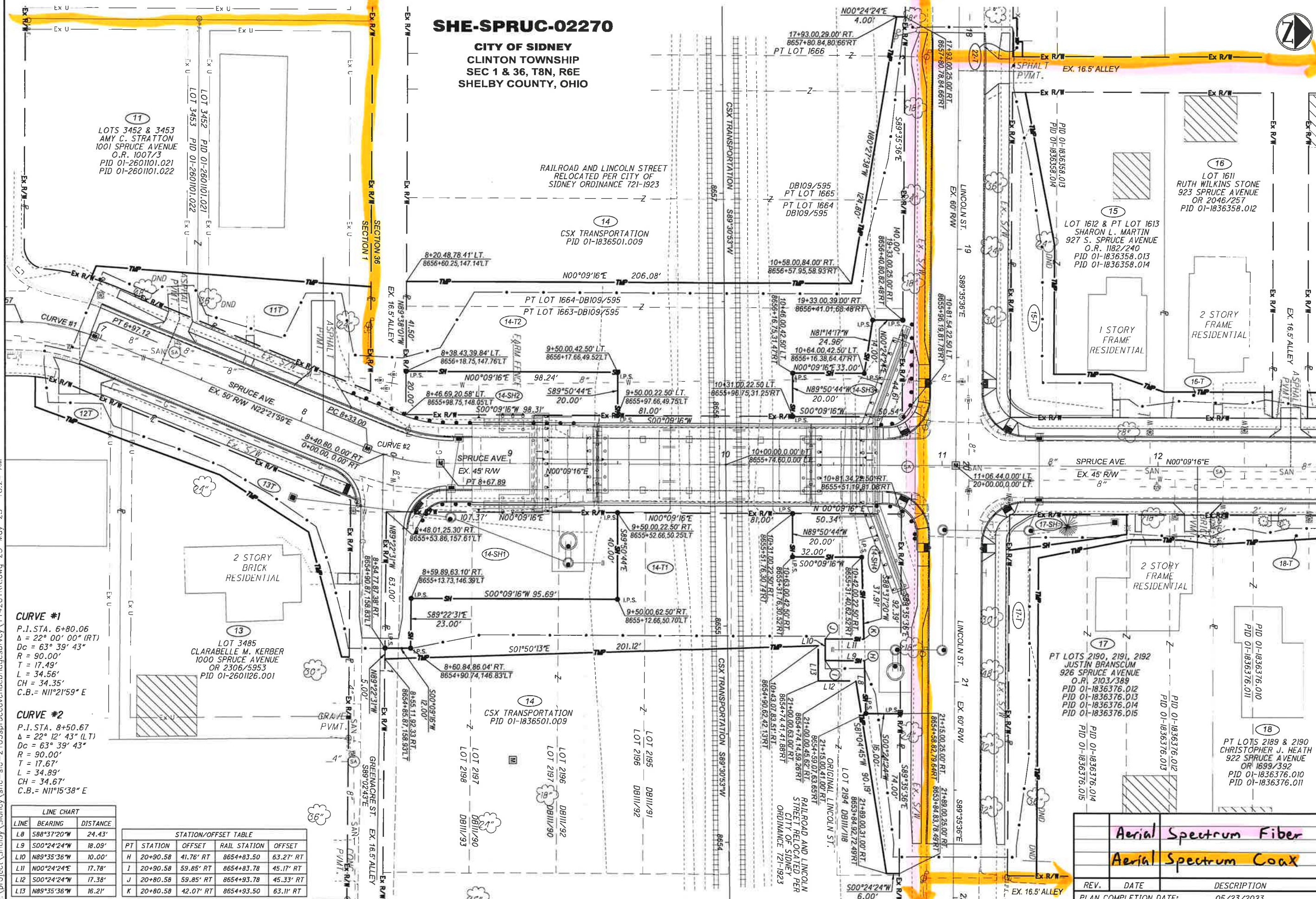


**CURVE #1**  
P.I. STA. 8+80.06  
Δ = 22° 00' 00" (RT)  
Dc = 63° 39' 43"  
R = 90.00'  
T = 17.49'  
L = 34.56'  
CH = 34.35'  
C.B. = N11°15'59" E

**CURVE #2**  
P.I. STA. 8+50.67  
Δ = 22° 12' 43" (LT)  
Dc = 63° 39' 43"  
R = 90.00'  
T = 17.67'  
L = 34.89'  
CH = 34.67'  
C.B. = N11°15'38" E

LINE CHART		
LINE	BEARING	DISTANCE
L8	S88°37'20"W	24.43'
L9	S00°24'24"W	18.09'
L10	N89°35'36"W	10.00'
L11	N00°24'24"E	17.78'
L12	S00°24'24"W	17.38'
L13	N89°35'36"W	16.21'

STATION/OFFSET TABLE				
PT	STATION	OFFSET	RAIL STATION	OFFSET
H	20+90.58	41.76' RT	8654+83.50	63.27' RT
I	20+90.58	59.85' RT	8654+83.78	45.17' RT
J	20+80.58	59.85' RT	8654+93.78	45.33' RT
K	20+80.58	42.07' RT	8654+93.50	63.11' RT

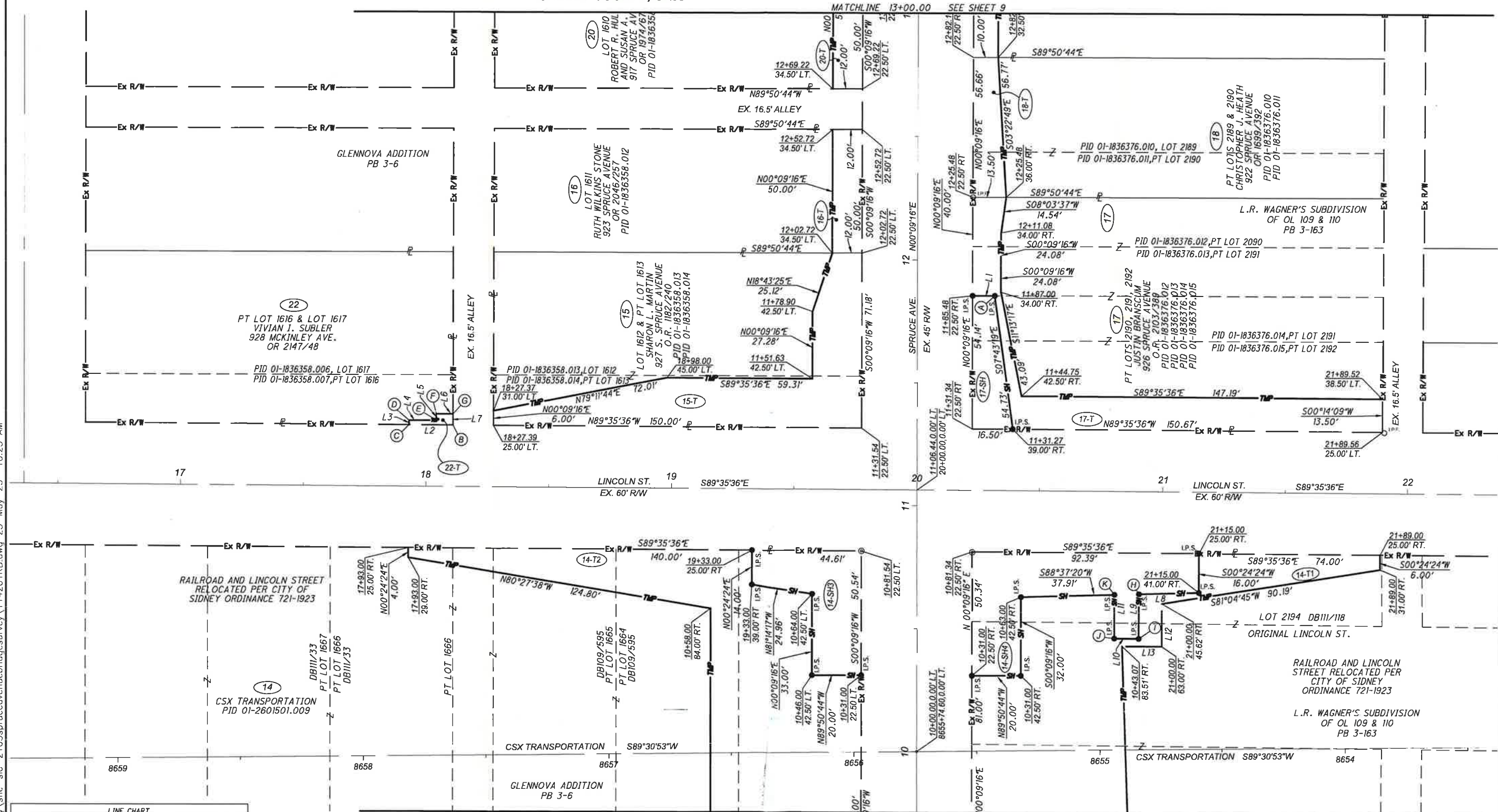





**CITY OF SIDNEY  
CLINTON TOWNSHIP  
SEC 1 & 36, T8N, R6E  
SHELBY COUNTY, OHIO**



SCALE IN FEET



RIGHT OF WAY BOUNDARY SHEET  
STA. 17+00 to STA. 22+00

LINE CHART					
LINE	BEARING	DISTANCE	LINE	BEARING	DISTANCE
L1	S89°50'44"E	9.00'	L8	S88°37'20"W	24.43'
L2	N89°35'36"W	17.89'	L9	S00°24'24"W	18.09'
L3	N00°24'24"E	1.76'	L10	N89°35'36"W	10.00'
L4	N89°25'39"E	11.11'	L11	N00°24'24"E	17.78'
L5	N00°02'35"W	2.55'	L12	S00°24'24"W	17.38'
L6	S89°35'36"E	6.79'	L13	N89°35'36"W	16.21'
L7	S00°09'16"W	4.50'			

STATION/OFFSET TABLE					
PT	STATION	OFFSET	PT	STATION	OFFSET
A	11+85.48	31.50' RT	G	18+10.87	29.50' L
B	18+10.89	25.00' LT	H	20+90.58	41.76' R
C	17+93.00	25.00' LT	I	20+90.58	59.85' R
D	17+93.00	26.76' LT	J	20+80.58	59.85' R
E	18+04.10	26.95' LT	K	20+80.58	42.07' R
F	18+04.08	29.50' LT			

ALL STATIONING IS FROM CENTERLINE OF  
RIGHT-OF-WAY UNLESS OTHERWISE NOTED.

			BHB
			REVIEWER
			WDG
			PROJECT ID
			114201
			SUBSET TOTAL
			RW.11 RW.12
REV.	DATE	DESCRIPTION	
PLAN COMPLETION DATE:			05/23/2023



DESIGN AGENCY

ONE ENGINEERING

IGNER	BHB
REVIEWER	WDG
ECT ID	114201
ET TOTAL	7.11 RW.12