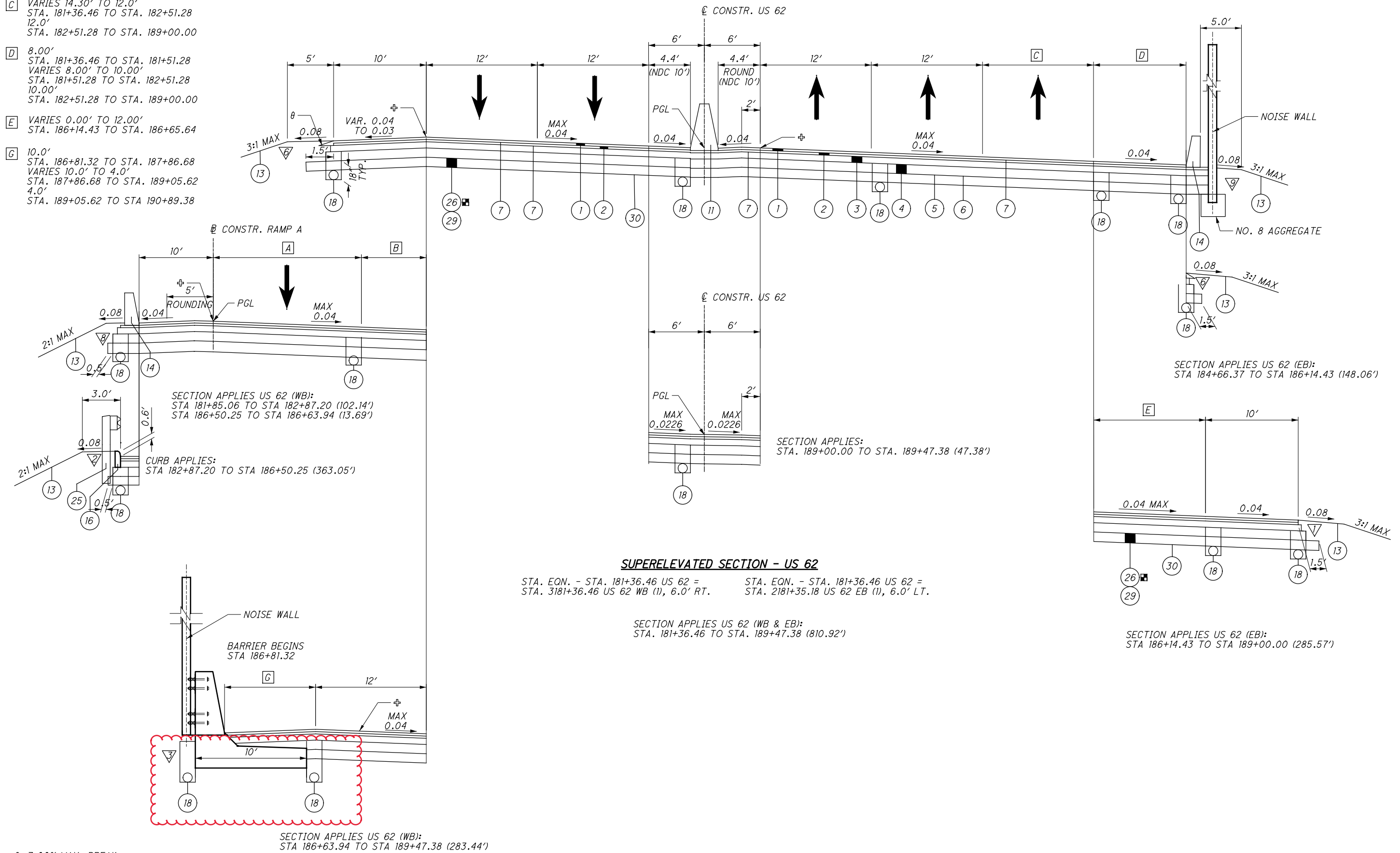


- A** 16.0'
STA. 181+81.20 TO STA. 184+20.18
VARIES 16.0' TO 12.0'
STA. 184+20.18 TO STA. 185+70.00
- B** VARIES 23.0' TO 0.0'
STA. 181+81.20 TO STA. 184+20.18
- C** VARIES 14.30' TO 12.0'
STA. 181+36.46 TO STA. 182+51.28
12.0'
STA. 182+51.28 TO STA. 189+00.00
- D** 8.00'
STA. 181+36.46 TO STA. 181+51.28
VARIES 8.00' TO 10.00'
STA. 181+51.28 TO STA. 182+51.28
10.00'
STA. 182+51.28 TO STA. 189+00.00
- E** VARIES 0.00' TO 12.00'
STA. 186+14.43 TO STA. 186+65.64
- G** 10.0'
STA. 186+81.32 TO STA. 187+86.68
VARIES 10.0' TO 4.0'
STA. 187+86.68 TO STA. 189+05.62
4.0'
STA. 189+05.62 TO STA. 190+89.38

26 ITEM APPLIES:
US 62 (WB & EB) STA. 181+36.46 TO STA. 189+47.38 (810.92')



SECTION APPLIES US 62 (WB):
STA 181+85.06 TO STA 182+87.20 (102.14')
STA 186+50.25 TO STA 186+63.94 (13.69')

CURB APPLIES:
STA 182+87.20 TO STA 186+50.25 (363.05')

SECTION APPLIES:
STA. 189+00.00 TO STA. 189+47.38 (47.38')

SECTION APPLIES US 62 (EB):
STA 184+66.37 TO STA 186+14.43 (148.06')

SECTION APPLIES US 62 (EB):
STA 186+14.43 TO STA 189+00.00 (285.57')

SUPERELEVATED SECTION - US 62

STA. EQN. - STA. 181+36.46 US 62 = STA. 3181+36.46 US 62 WB (1), 6.0' RT.
STA. EQN. - STA. 181+36.46 US 62 = STA. 2181+35.18 US 62 EB (1), 6.0' LT.

SECTION APPLIES US 62 (WB & EB):
STA. 181+36.46 TO STA. 189+47.38 (810.92')

SECTION APPLIES US 62 (WB):
STA 186+63.94 TO STA 189+47.38 (283.44')

⊕ 7.00% MAX. BREAK
θ - 40° MAX, SEE BP-3.2

FOR LEGEND AND ASPHALT EDGE COURSE DETAILS SEE SHEET 10.

...:\Roadway\Sheets\100824\001_11/24/2021 9:44:00 AM ghmassie

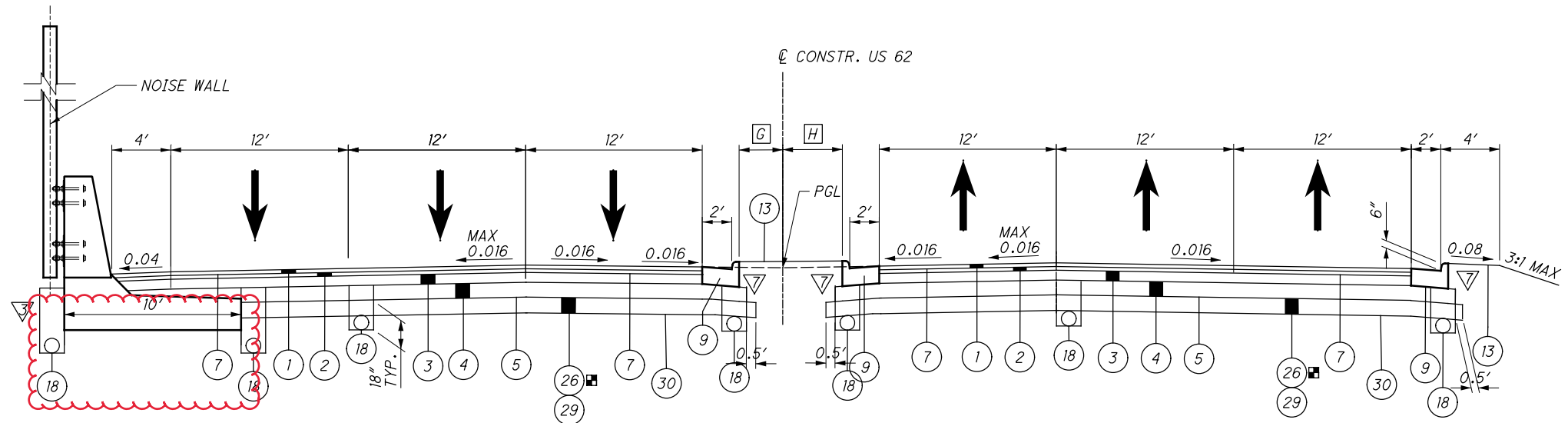
E VARIES 6.00' TO 2.00'
STA. 189+80.00 TO STA. 190+30.00

F VARIES 6.00' TO 2'
STA. 189+80.00 TO STA. 190+05.04

G VARIES 0' TO 3.5'
STA. 189+80.00 TO STA. 190+30.00
3.5'
STA. 190+30.00 TO STA. 190+50.00

H VARIES 0' TO 4.15'
STA. 189+80.00 TO STA. 190+05.04
VARIES 4.15' TO 9.37'
STA. 190+05.04 TO STA. 192+47.50

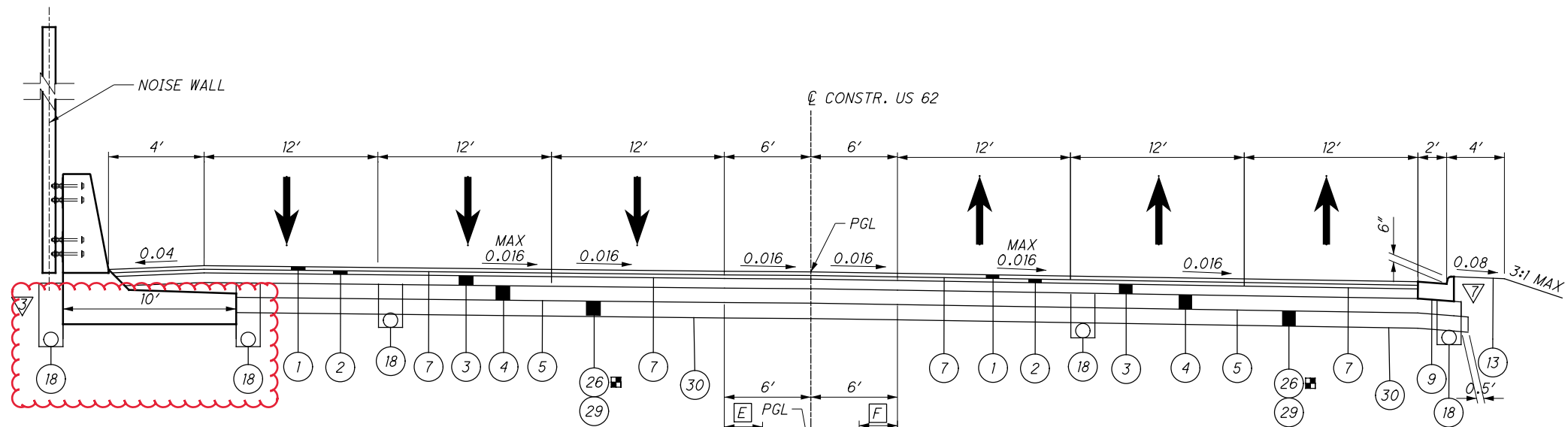
26 ITEM APPLIES:
US 62 (WB) STA. 189+47.38 TO STA. 190+89.38 (142.00')
US 62 (EB) STA. 189+47.38 TO STA. 190+18.38 (71.00')



SUPERELEVATED SECTION - US 62

SECTION APPLIES US 62 (WB):
STA 190+30.00 TO STA. 190+89.38 (59.38')

SECTION APPLIES US 62 (EB):
STA 190+05.04 TO STA. 190+18.38 (13.34')



SUPERELEVATED SECTION - US 62

SECTION APPLIES US 62 (WB):
STA 189+80.00 TO STA. 190+30.00
(50.00')

SECTION APPLIES US 62 (EB):
STA 189+80.00 TO STA. 190+05.04
(25.04')

SECTION APPLIES US 62 (WB):
STA 189+47.38 TO STA. 190+18.38
(71.00')

SECTION APPLIES US 62 (EB):
STA 189+47.38 TO STA. 189+82.88
(35.50')

...Roadway\Sheets\100824\Y001_11/24/2021 9:44:57 AM ghmassie

θ - 40° MAX, SEE BP-3.2

FOR LEGEND AND ASPHALT EDGE
COURSE DETAILS SEE SHEET 10 .

TYPICAL SECTIONS - US 62

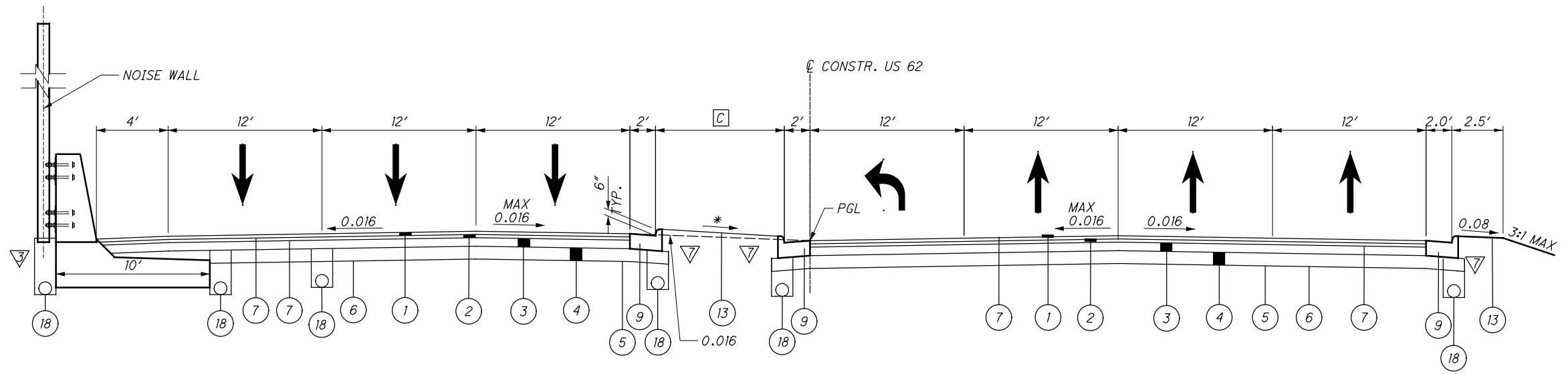
STA - 062 - 24.14

13
500

- A** VARIES 3.37' TO 9.0'
STA. 190+18.38 TO STA. 193+00.00
- B** VARIES 6.17' TO 11.93'
STA. 189+82.88 TO STA. 192+50.00
VARIES 11.93' TO 0.00'
STA. 192+50.00 TO STA. 193+00.00
0.00'
STA. 193+00.00 TO STA. 193+54.00
- C** VARIES 7.0' TO 8.0'
STA. 193+00.00 TO STA. 193+50.00
8.0'
STA. 193+50.00 TO STA. 194+23.92
VARIES 8.0' TO 0.0'
STA. 194+23.92 TO STA. 194+61.00

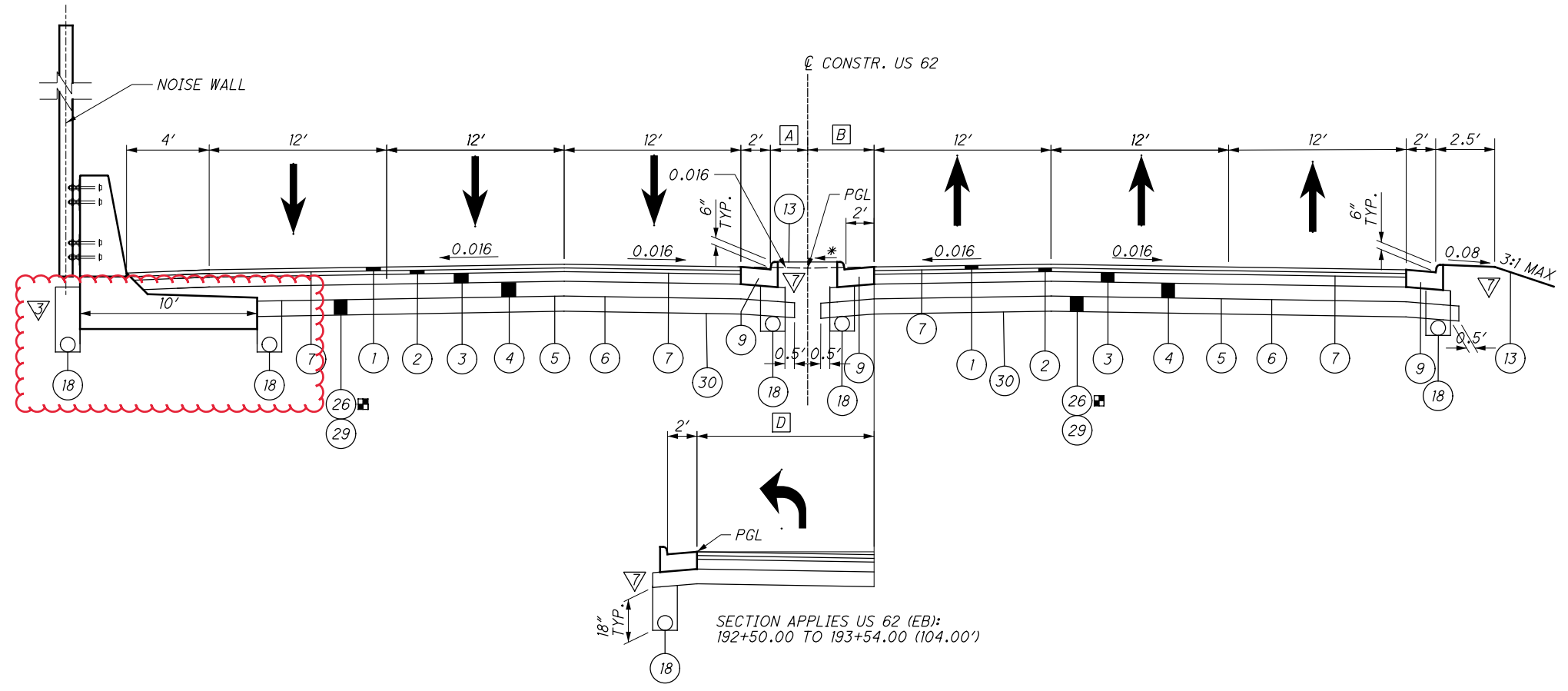
- D** VARIES 0.00' TO 12.00'
STA. 192+50.00 TO STA. 193+00.00

26 ITEM APPLIES:
US 62 (WB) STA. 190+89.38 TO STA. 191+43.00 (53.62')
US 62 (EB) STA. 190+18.38 TO STA. 191+43.00 (124.62')



SUPERELEVATED SECTION - US 62

SECTION APPLIES US 62 (WB):
STA 193+54.00 TO STA 193+89.50 (35.50') SECTION APPLIES US 62 (EB):
STA 192+83.00 TO STA 193+54.00 (71.00')



NORMAL SECTION - US 62

SECTION APPLIES US 62 (WB):
STA 190+89.38 TO STA 193+54.00 (264.62') SECTION APPLIES US 62 (EB):
STA 190+18.38 TO STA 192+83.00 (264.62')

...Roadway\Sheets\100824GY001_11/24/2021 9:45:28 AM ghmassie

* MATCH SLOPE OF ADJACENT LANES
⊕ 7.00% MAX. BREAK

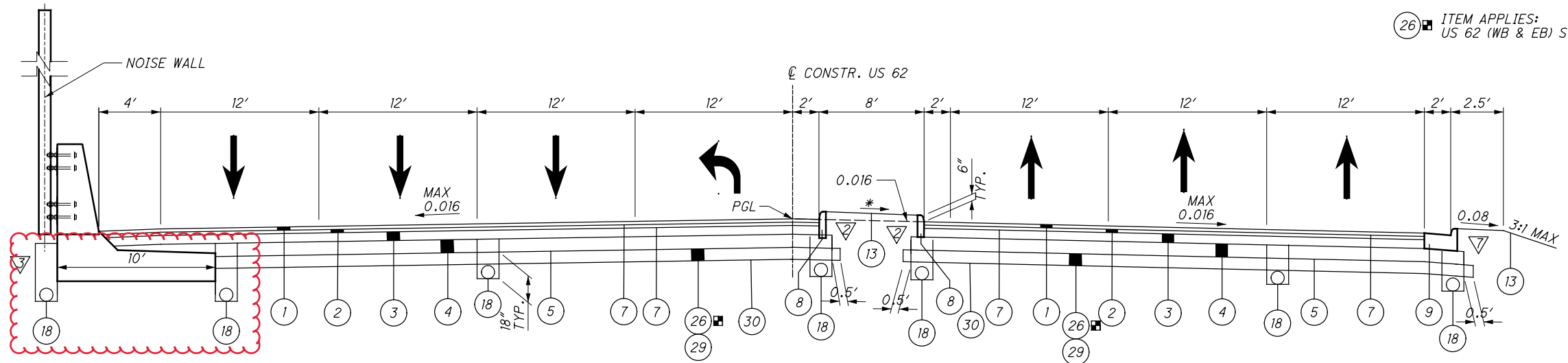
FOR LEGEND AND ASPHALT EDGE
COURSE DETAILS SEE SHEET 10.

TYPICAL SECTIONS - US 62

STA -062-24.14

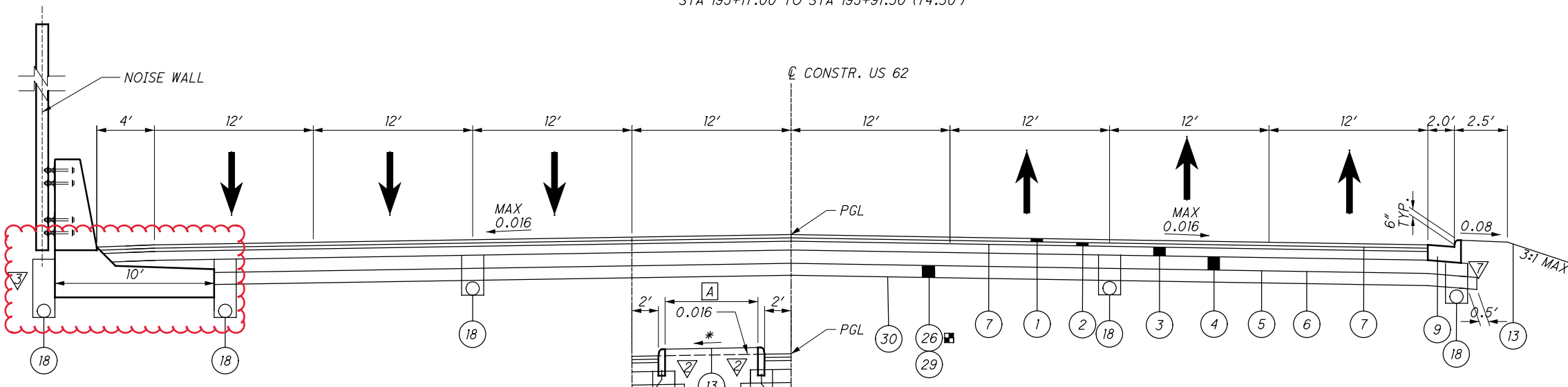
(26) ITEM APPLIES:
US 62 (WB & EB) STA. 195+00.00 TO STA. 196+59.71 (159.71')

A VARIES 7.0' TO 0.0'
STA. 194+23.78 TO STA. 194+61.01



NORMAL SECTION - US 62

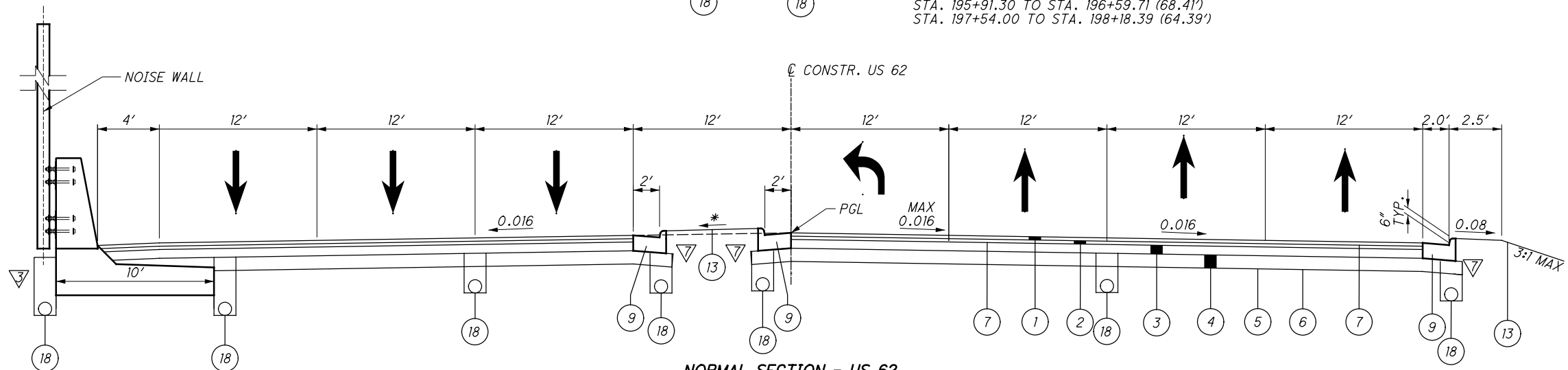
SECTION APPLIES US 62:
STA 195+17.00 TO STA 195+91.30 (74.30')



NORMAL SECTION - US 62

SECTION APPLIES US 62:
STA. 194+25.00 TO STA. 195+17.00 (92.00')
STA. 195+91.30 TO STA. 196+59.71 (68.41')
STA. 197+54.00 TO STA. 198+18.39 (64.39')

SECTION APPLIES US 62:
STA. 194+25.00 TO STA. 194+61.01
(36.01')



NORMAL SECTION - US 62

SECTION APPLIES US 62 (WB):
STA 193+89.50 TO STA 194+25.00
(35.50')

SECTION APPLIES US 62 (EB):
STA 193+54.00 TO STA 194+25.00
(71.00')

* MATCH SLOPE OF ADJACENT LANES

FOR LEGEND AND ASPHALT EDGE
COURSE DETAILS SEE SHEET 10.

TYPICAL SECTIONS - US 62

STA-062-24.14

15
500

ITEM	ITEM EXT	GRAND TOTAL	UNIT	DESCRIPTION	SEE SHEET NO.
				NOISE BARRIERS	
524	94600	907	FT	DRILLED SHAFTS, 30" DIAMETER	
SPECIAL	60610210	24,096	SF	NOISE BARRIER (REFLECTIVE)	396
SPECIAL	60610920	1440	SF	NOISE BARRIER, FIBERGLASS PANELS	396
SPECIAL	60610920	8382	SF	NOISE BARRIER, FIBERGLASS PANELS, MOMENT SLAB MOUNTED	396
				MOMENT SLAB & BARRIER	
503	21100	340	CY	UNCLASSIFIED EXCAVATION	
509	10001	91,525	LB	EPOXY COATED REINFORCING STEEL, AS PER PLAN	411, 414
511	53012	596	CY	CLASS QC2 CONCRETE, MISC.: MOMENT SLAB AND BARRIER	396, 411
512	10100	929	SY	SEALING OF CONCRETE SURFACES (EPOXY-URETHANE)	411, 416
516	13000	106	SF	1/4" PREFORMED EXPANSION JOINT FILLER	
516	13600	175	SF	1" PREFORMED EXPANSION JOINT FILLER	
				RETAINING WALLS (MODULAR BLOCK)	
870	10001	817	SF	PREFABRICATED MODULAR RETAINING WALL, AS PER PLAN	396, 416
870	11000	461	CY	WALL EXCAVATION	
870	11100	157	CY	NATURAL SOIL	
870	12000	124	FT	6" DRAINAGE PIPE, PERFORATED	
870	12100	30	FT	6" DRAINAGE PIPE, NON-PERFORATED	
870	14000	2	DAY	ON-SITE ASSISTANCE	
870	15000	LS	-	PMRW INSPECTION AND COMPACTION TESTING	