

ITEM 614, MAINTAINING TRAFFIC

THIS ITEM SHALL CONSIST OF MAINTENANCE OF TRAFFIC ON EXISTING ROADWAYS IN ACCORDANCE WITH THE OHIO MANUAL OF UNIFORM TRAFFIC DEVICES FOR STREETS AND HIGHWAYS (OMUTCD), CURRENT EDITION, LATEST REVISION, THE SPECIFICATIONS, AND AS FOLLOWS.

TIME LIMITATION ON A DETOUR

A MINIMUM OF ONE LANE OF TRAFFIC IN EACH DIRECTION SHALL BE MAINTAINED AT ALL TIMES, EXCEPT FOR A PERIOD NOT TO EXCEED 60 CONSECUTIVE CALENDAR DAYS, WHEN THROUGH TRAFFIC MAY BE DETOURED AS SHOWN ON SHEET P.10. A DISINCENTIVE SHALL BE ASSESSED IN THE AMOUNT OF \$7,500 PER DAY FOR EACH CALENDAR DAY THE ROADWAY REMAINS CLOSED TO TRAFFIC BEYOND THE SPECIFIED LIMIT.

NOTICE OF CLOSURE SIGN

NOTICE OF CLOSURE SIGNS (W20-H13) SHALL BE ERECTED BY THE CONTRACTOR PRIOR TO THE SCHEDULED ROAD CLOSURE IN ACCORDANCE WITH THE NOTICE OF CLOSURE TIME TABLE BELOW.

THE SIGNS SHALL BE ERECTED ON THE RIGHT-HAND SIDE OF THE ROAD FACING TRAFFIC. THEY SHALL BE PLACED SO AS NOT TO INTERFERE WITH THE VISIBILITY OF ANY OTHER TRAFFIC CONTROL SIGNS. ON ROADWAYS, THEY SHOULD BE ERECTED AT OR NEAR THE POINT OF CLOSURE.

NOTICE OF CLOSURE SIGN TIME TABLE		
ITEM	DURATION OF CLOSURE	SIGN DISPLAYED TO PUBLIC
RAMP & ROAD CLOSURES	<= 2 WEEKS	14 CALENDAR DAYS PRIOR TO CLOSURE
	> 12 HOURS & < 2 WEEKS	7 CALENDAR DAYS PRIOR TO CLOSURE
	<= 12 HOURS	2 BUSINESS DAYS PRIOR TO CLOSURE

THE SIGN SHALL DISPLAY THE DATE OF THE CLOSURE IN MM-DD FORMAT AND THE NUMBER OF DAYS OF THE CLOSURE. THE LAST LINE OF THE W20-H13 SIGN LISTS A PHONE NUMBER WHICH A MOTORIST MAY CALL FOR ADDITIONAL INFORMATION. THIS IS TO BE A SPECIFIC OFFICE WITHIN THE COUNTY RATHER THAN THE GENERAL SWITCHBOARD NUMBER.

ROAD WILL BE
 CLOSED (DATE)
 FOR 60 DAYS
 INFO: (PHONE NUMBER)

W20-H13-60

DETOUR NOTIFICATION (STARK COUNTY)

THE CONTRACTOR SHALL ADVISE THE STARK COUNTY ENGINEER'S OFFICE EIGHTEEN (18) DAYS IN ADVANCE OF WHEN THE DETOUR ROUTE SHOULD BE IN EFFECT. THE COUNTY OFFICE WILL THEN NOTIFY AREA RESIDENTS, LOCAL EMERGENCY SERVICES, SCHOOL SYSTEMS, AND PUBLIC SERVICE PROVIDERS A MINIMUM OF FOURTEEN (14) DAYS IN ADVANCE OF WHEN THE DETOUR ROUTE SHOULD BE IN EFFECT. ALL WORK ZONE DEVICES REQUIRED SHALL BE FURNISHED, ERECTED, MAINTAINED, AND SUBSEQUENTLY REMOVED BY THE CONTRACTOR. PAYMENT FOR ALL WORK ASSOCIATED WITH THE DETOUR SHALL BE INCLUDED UNDER THE LUMP SUM BID FOR ITEM 614, DETOUR SIGNING.

SCHOOL DRIVE ACCESS

THE CONTRACTOR SHALL MAINTAIN ACCESS TO JACKSON HIGH SCHOOL AT ALL TIMES.

RE-OPENING TO TRAFFIC


PRIOR TO OPENING THE ROAD TO TRAFFIC, TEMPORARY OR PERMANENT PAVEMENT MARKINGS SHALL BE IN PLACE.

PEDESTRIAN SAFETY

THE SAFETY OF PEDESTRIAN AND BICYCLE TRAFFIC SHALL BE CONSIDERED AT ALL TIMES. IT SHALL BE THE CONTRACTOR'S RESPONSIBILITY TO PROVIDE LIGHTS, SIGNS, BARRICADES, AND OTHER DEVICES TO WARN AND PHYSICALLY SEPARATE THE PEDESTRIANS AND BICYCLES FROM HAZARDS INCIDENTAL TO THE CONSTRUCTION AND/OR INSTALLATION OF THE REQUIRED TRAFFIC CONTROL AND ROADWAY ITEMS SUCH AS ANCHOR BOLTS, OPEN EXCAVATIONS, ETC. UNLESS OTHERWISE DIRECTED BY THE ENGINEER, SUCH PEDESTRIAN AND BICYCLE PROTECTION SHALL UTILIZE, BUT NOT BE LIMITED TO, DRUMS, TEMPORARY FENCE, TYPE 1, TYPE 2 OR TYPE 3 BARRICADES.

SEQUENCE OF CONSTRUCTION

PHASE 1

CLOSE AND DETOUR FULTON DRIVE TO BUILD THE TUNNEL UNDER FULTON DRIVE. CONSTRUCTION OF THE TUNNEL AND THE CLOSURE OF FULTON DRIVE SHALL NOT BEGIN UNTIL MAY 31, 2022. 

PHASE 2

UPON THE COMPLETION OF THE TUNNEL, OPEN FULTON DRIVE TO TRAFFIC AND COMPLETE THE REMAINING PORTION OF THE TRAIL CONSTRUCTION.

MEASUREMENT AND PAYMENT

ALL WORK AND TRAFFIC CONTROL DEVICES SHALL BE IN ACCORDANCE WITH C&MS 614 AND OTHER APPLICABLE PORTIONS OF THE SPECIFICATIONS, AS WELL AS THE OHIO MANUAL OF UNIFORM TRAFFIC CONTROL DEVICES. PAYMENT FOR ALL LABOR, EQUIPMENT AND MATERIALS SHALL BE INCLUDED IN THE LUMP SUM CONTRACT PRICE FOR ITEM 614, MAINTAINING TRAFFIC, UNLESS SEPARATELY ITEMIZED IN THE PLAN.

ITEM 614, MAINTAINING TRAFFIC LUMP SUM

ITEM 614, DETOUR SIGNING LUMP SUM

DUST CONTROL

THE CONTRACTOR SHALL FURNISH AND APPLY WATER FOR DUST CONTROL AS DIRECTED BY THE ENGINEER. THE FOLLOWING ESTIMATED QUANTITIES HAVE BEEN INCLUDED FOR DUST CONTROL PURPOSES:

ITEM 616, WATER 20 M. GAL.

LANES OPEN DURING HOLIDAYS OR SPECIAL EVENTS

NO WORK SHALL BE PERFORMED AND ALL EXISTING LANES SHALL BE OPEN TO TRAFFIC DURING THE FOLLOWING DESIGNATED HOLIDAYS OR EVENTS:

CHRISTMAS	LABOR DAY
NEW YEAR'S	THANKSGIVING
MEMORIAL DAY	

THE PERIOD OF TIME THAT THE LANES ARE TO BE OPEN DEPENDS ON THE DAY OF THE WEEK ON WHICH THE HOLIDAY OR EVENT FALLS. THE FOLLOWING SCHEDULE SHALL BE USED TO DETERMINE THIS PERIOD:

DAY OF HOLIDAY OR EVENT TIME ALL LANES MUST BE OPEN TO TRAFFIC

SUNDAY	12:00N FRIDAY - 6:00AM MONDAY
MONDAY	12:00N FRIDAY - 6:00AM TUESDAY
TUESDAY	12:00N MONDAY - 6:00AM WEDNESDAY
WEDNESDAY	12:00N TUESDAY - 6:00AM THURSDAY
THURSDAY	12:00N WEDNESDAY - 6:00AM FRIDAY
THURSDAY (THANKSGIVING ONLY)	6:00AM WEDNESDAY - 6:00AM MONDAY
FRIDAY	12:00N THURSDAY - 6:00AM MONDAY
SATURDAY	12:00N FRIDAY - 6:00AM MONDAY

SHOULD THE CONTRACTOR FAIL TO MEET ANY OF THESE REQUIREMENTS, THE CONTRACTOR SHALL BE ASSESSED A DISINCENTIVE PER THE LANE VALUE CONTRACT (PN 127).

DESIGN AGENCY



DESIGNER
KWR

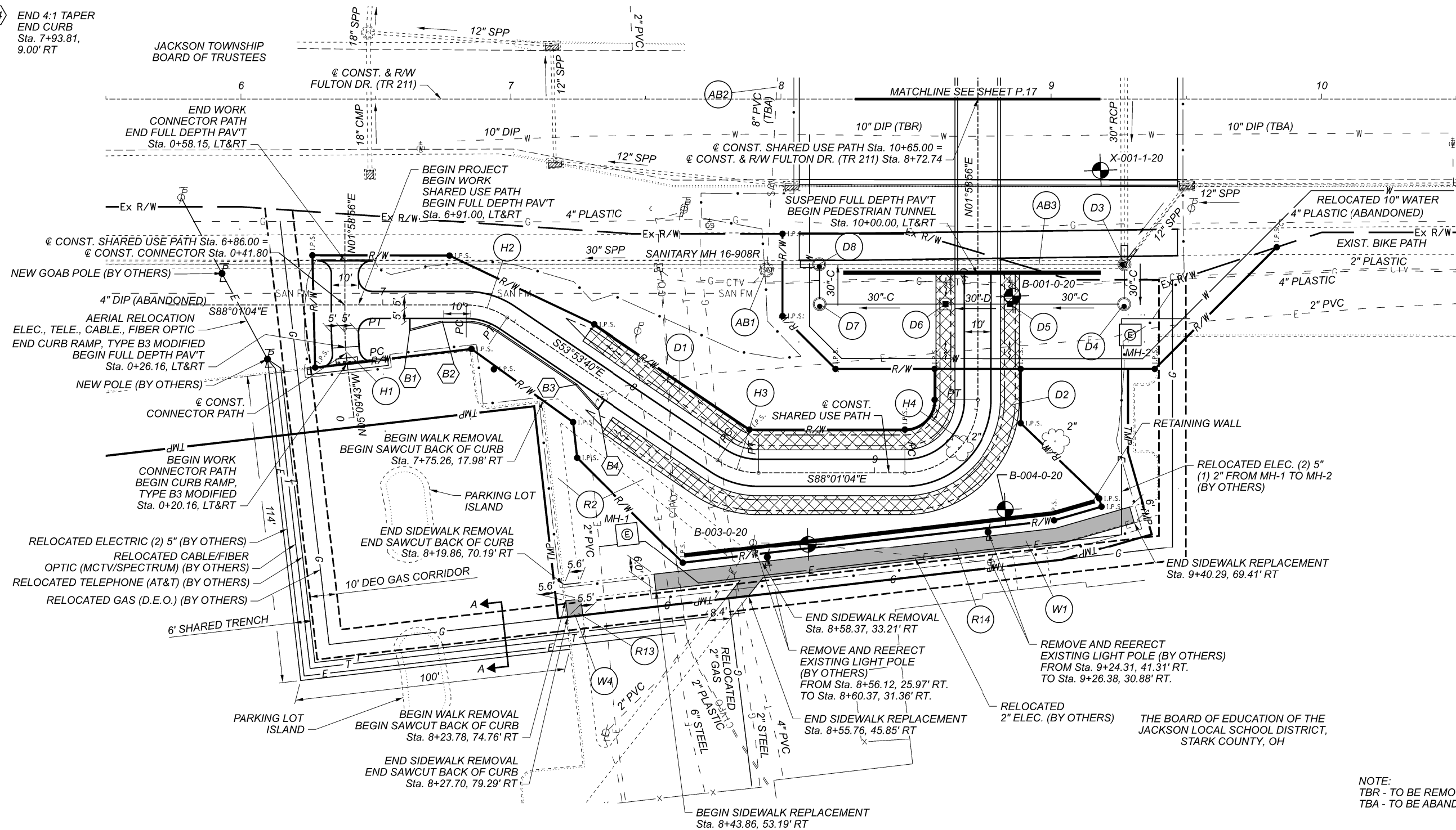
REVIEWER
DRB 06/01/21

PROJECT ID
110429

SHEET TOTAL
P.8 P.78

 REVISED 3/1/22

- B1 BEGIN CURB
BEGIN 4:1 TAPER
Sta. 7+10.00,
9.00' RT
- B2 END 4:1 TAPER
Sta. 7+22.00,
6.00' RT
- B3 BEGIN 4:1 TAPER
Sta. 7+82.19,
6.00' RT
- B4 END 4:1 TAPER
END CURB
Sta. 7+93.81,
9.00' RT



- H1 CURVE DATA
P.I. = Sta. 0+26.78
 $\Delta = 07^{\circ}08'39''$ RT
Dc = 57'17'45"
R = 100.00'
T = 6.24'
L = 12.47'
E = .19'
PC = Sta. 0+20.54
PT = Sta. 0+33.01
- H2 CURVE DATA
P.I. = Sta. 7+39.14
 $\Delta = 34^{\circ}07'24''$ RT
Dc = 212'12'24"
R = 27.00'
T = 8.29'
L = 16.08'
E = 1.24'
PC = Sta. 7+30.85
PT = Sta. 7+46.93
- H3 CURVE DATA
P.I. = Sta. 8+49.36
 $\Delta = 34^{\circ}07'24''$ LT
Dc = 212'12'24"
R = 27.00'
T = 8.29'
L = 16.08'
E = 1.24'
PC = Sta. 8+41.07
PT = Sta. 8+57.15
- H4 CURVE DATA
P.I. = Sta. 9+38.15
 $\Delta = 90^{\circ}00'00''$ LT
Dc = 212'12'24"
R = 27.00'
T = 27.00'
L = 42.41'
E = 11.18'
PC = Sta. 9+11.15
PT = Sta. 9+53.56

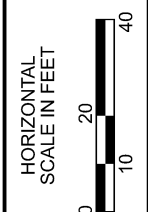
1 REVISED 3/1/22
 NOTE: PROPOSED WATERLINE
 RELOCATION WILL BE MODIFIED.
 SEE UTILITY NOTE 4A.

ABANDONED CONDUIT NOTE:
 ACTIVE UTILITY LINES HAVE BEEN REMOVED FROM AT&T, MCTV, CHARTER
 AND THE ELECTRIC DUCTS, HOWEVER THE CONTRACTOR IS ADVISED THAT
 CONCRETE ENCASED CONDUITS REMAIN. REMOVAL OF SUCH CONDUITS
 OR CONCRETE ENCASEMENT IS CONSIDERED INCIDENTAL AND TO BE
 INCLUDED WITH ITEM 203 - EXCAVATION. CONDUIT SHALL BE REMOVED TO
 A NEAT EDGE AT A DEPTH OF APPROXIMATELY 2' BELOW FINISHED GRADE.

NOTE:
 TBR - TO BE REMOVED
 TBA - TO BE ABANDONED

- ITEM 670 - DITCH EROSION PROTECTION (7.5' WIDE TYP.)
- APPROXIMATE LOCATION OF EXISTING ASPHALT WALK FROM UTILITY RELOCATIONS

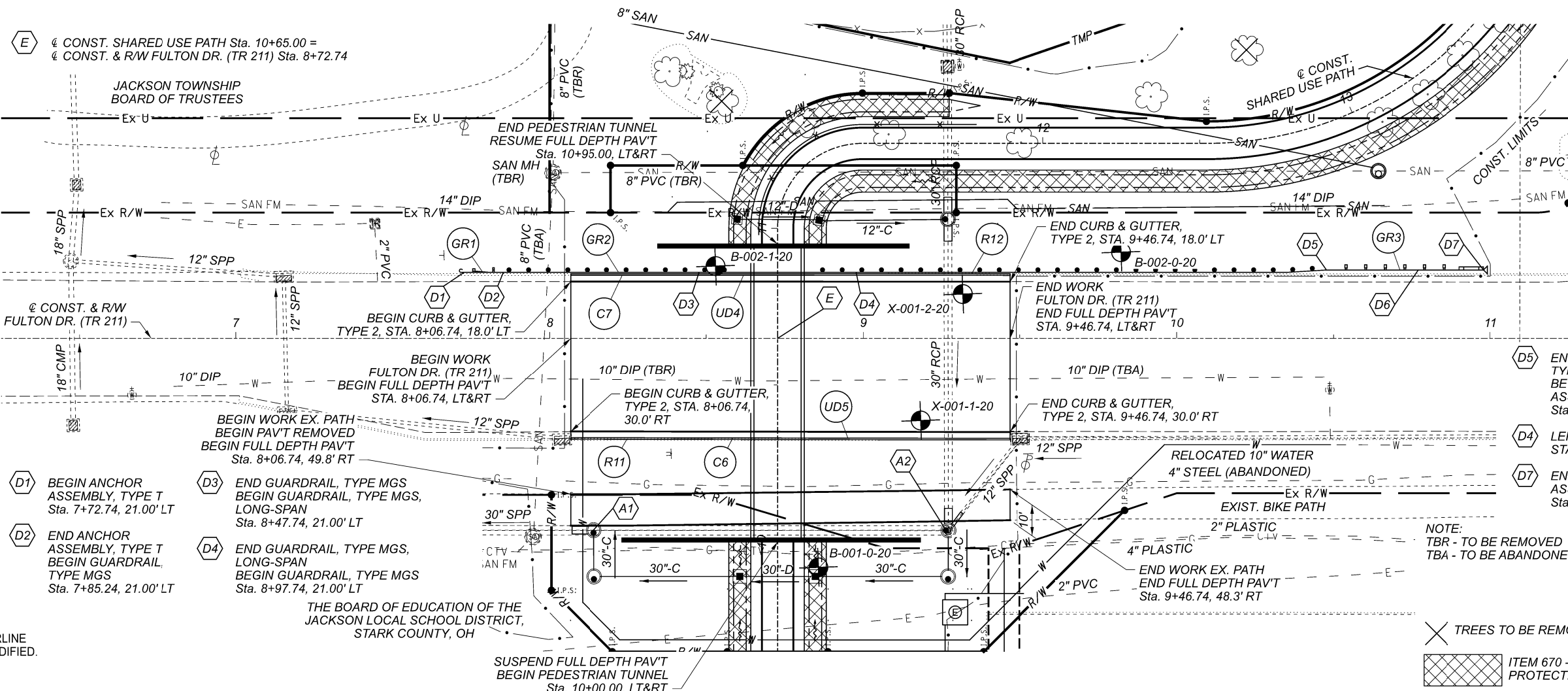
CROSS REFERENCES	
SHEET NO(S)	INTERSECTION DETAIL SHEET
P.41	SUP AND CONNECTOR PROFILE
P.18	FULTON DR PLAN AND PROFILE



SHARED USE PATH AND CONNECTOR PLAN SHEET
 STA. 6+86 TO STAL 10+65

DESIGN AGENCY

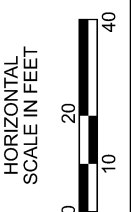
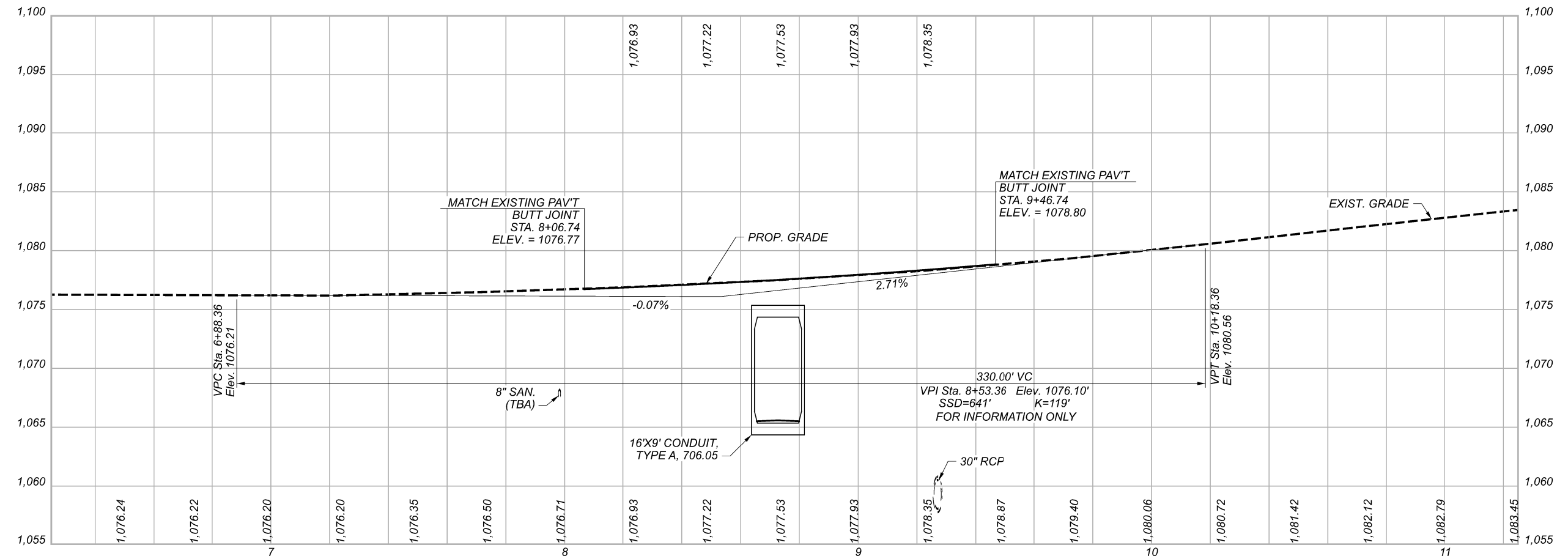
 ms consultants, inc.
 DESIGNER
 JDK
 REVIEWER
 WBH 07/16/21
 PROJECT ID
 110429
 SHEET TOTAL
 P.16 P.78



- A1 BEGIN FILL AND ABANDON STA. 8+14.14, 61.26 RT
- A2 END FILL AND ABANDON STA. 9+27.13, 61.33' RT
- D1 BEGIN ANCHOR ASSEMBLY, TYPE T STA. 7+72.74, 21.00' LT
- D2 END ANCHOR ASSEMBLY, TYPE T BEGIN GUARDRAIL, TYPE MGS STA. 7+85.24, 21.00' LT
- D3 END GUARDRAIL, TYPE MGS BEGIN GUARDRAIL, TYPE MGS, LONG-SPAN STA. 8+47.74, 21.00' LT
- D4 END GUARDRAIL, TYPE MGS, LONG-SPAN BEGIN GUARDRAIL, TYPE MGS STA. 8+97.74, 21.00' LT
- E 1/2 CONST. SHARED USE PATH Sta. 10+65.00 = 1/2 CONST. & R/W FULTON DR. (TR 211) Sta. 8+72.74

1 REVISED 3/1/22

NOTE: PROPOSED WATERLINE RELOCATION WILL BE MODIFIED. SEE UTILITY NOTE 4A.



FULTON DR. (TR 211)
PLAN AND PROFILE

DESIGN AGENCY



DESIGNER	JDK
REVIEWER	WBH 07/16/21
PROJECT ID	110429
SHEET TOTAL	P.19 P.78