

**PAVEMENT MARKINGS**

THE FOLLOWING QUANTITIES HAVE BEEN PROVIDED TO BE USED AS DIRECTED BY THE PROJECT ENGINEER TO MATCH EXISTING PAVEMENT MARKINGS.

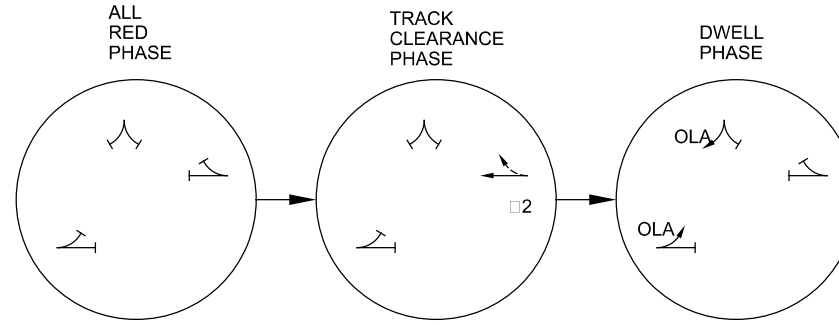
THE UNIT BID PRICES ON THESE PAY ITEMS WILL NOT BE ADJUSTED AS PER CMS 104.02.D.

ITEM 642 - CENTER LINE, 6", TYPE 1	0.15 MILES
ITEM 642 - TRANSVERSE LINE, 6", TYPE 1	90 FT
ITEM 642 - ISLAND MARKING, TYPE 1	190 FT
ITEM 644 - STOP LINE, 8", TYPE 1	85 FT

**GROUND MOUNTED SIGN & SIGN SUPPORT**

THE FOLLOWING QUANTITIES HAVE BEEN PROVIDED FOR THE PROPOSED SIGNAGE.

ITEM 630 SIGN SUPPORT ASSEMBLY, BRIDGE MOUNTED, TYPE 2	1 EACH
ITEM 630 GROUND MOUNTED SIGN SUPPORT, NO 3 POST	30 FT
ITEM 630 SIGN, FLAT SHEET	18 SQ FT

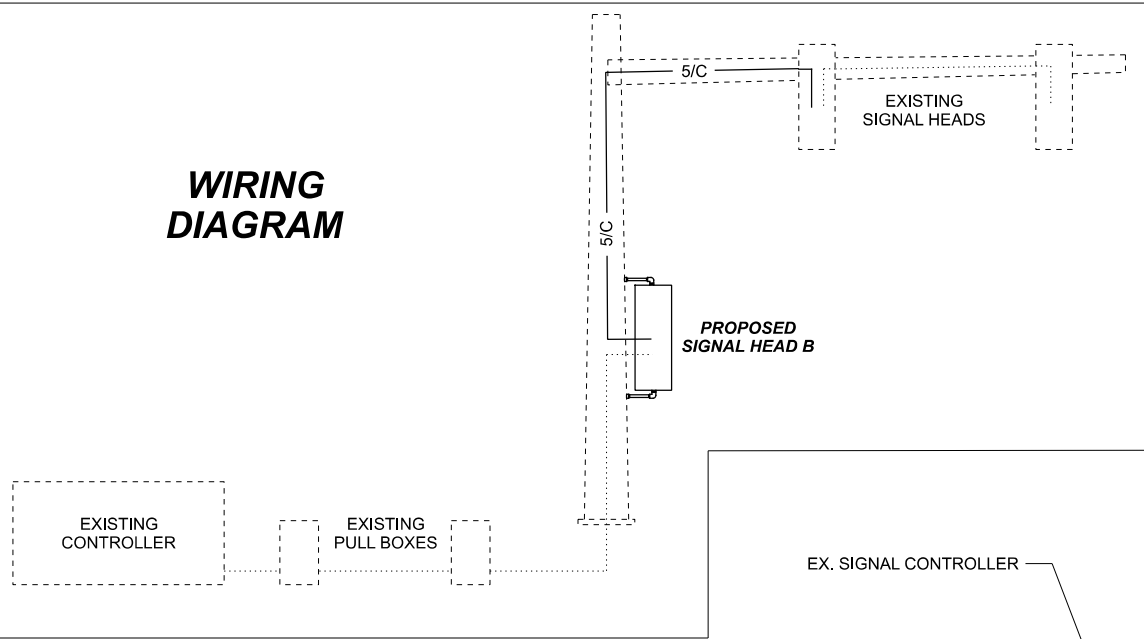


DURATION: 1.0 SEC

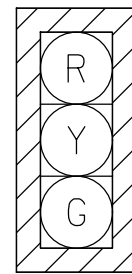
**PROPOSED RAILROAD PREEMPTION PHASING DIAGRAM**

NOTE: WHEN A RAILROAD PREEMPTION SIGNAL IS RECEIVED AND THE CONTROLLER IS SERVICING A PEDESTRIAN PHASE, IT SHALL IMMEDIATELY TERMINATE THE PEDESTRIAN PHASE AND ENTER RAIL PREEMPTION OPERATION

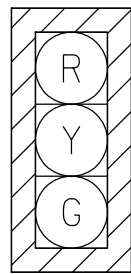
**WIRING DIAGRAM**



**PROPOSED SIGNAL HEADS**  
12" W/ BACKPLATES (TYP.)



A

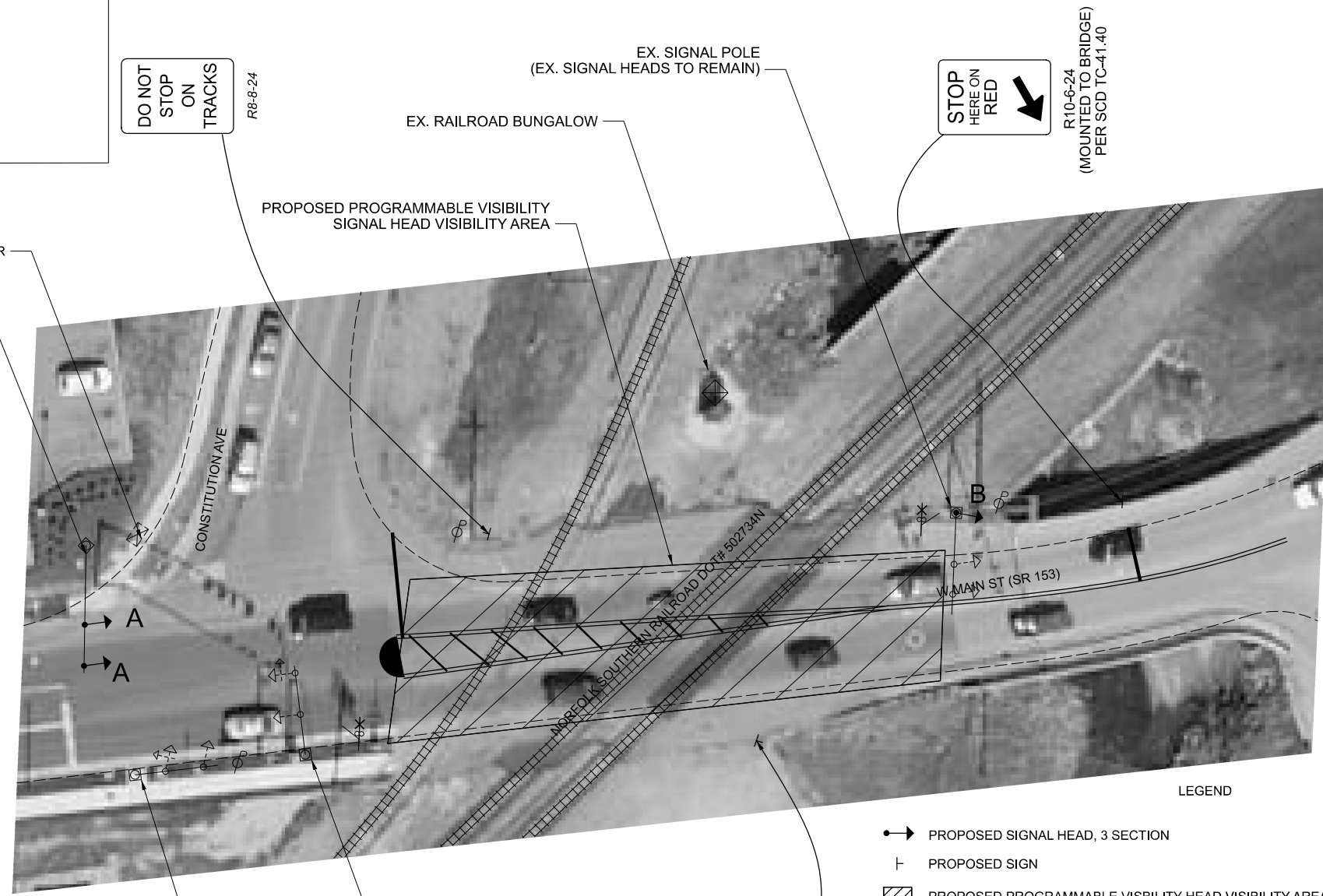


B

SEE NOTES B & C

NOTE B: SIGNAL B IS A SUPPLEMENTAL SIGNAL HEAD MOUNTED ON EXISTING SUPPORT POLE PER TC-85.10 AND SHALL SHOW SAME INDICATIONS AS THE EXISTING SIGNAL HEADS ON ASSOCIATED MAST ARM

NOTE C: SIGNAL B SHALL BE CONNECTED TO THE EXISTING WIRE IN THE SIGNAL POLE. A QUANTITY OF 43 FEET OF 5/C SIGNAL CABLE HAS BEEN PROVIDED TO CONNECT THE NEW HEAD TO THE CLOSEST EXISTING SIGNAL HEAD ON THE MAST ARM. ALL LABOR AND MATERIALS REQUIRED TO INSTALL THE SUPPLEMENTAL HEAD WILL BE INCLUDED IN THE COST OF THE SIGNAL HEAD.



DESIGN AGENCY	
DESIGNER	BCB
REVIEWER	RMM
PROJECT ID	11645
SHEET	9
TOTAL	9