

SHEET NUM.										PART.	ALT	ITEM	ITEM	GRAND	UNIT	DESCRIPTION	SEE SHEET NO.	
OFFICE CALCS	13	14	64	65	66	67	102	114		01MPO/PV/BARS-2/OT/BARB	(X)	EXT	TOTAL					
	LS											201	11000	LS		ROADWAY		
12,071							485					202	23000	12,556	SY	CLEARING AND GRUBBING		
346												202	23500	346	SY	PAVEMENT REMOVED		
			24,210									202	30000	24,210	SF	WEARING COURSE REMOVED		
			3,623				33					202	32000	3,656	FT	WALK REMOVED		
					77			88				202	35100	165	FT	CURB REMOVED		
			427									202	38000	427	FT	PIPE REMOVED, 24" AND UNDER		
					14							202	58100	14	EACH	GUARDRAIL REMOVED		
					1							202	58200	1	EACH	CATCH BASIN REMOVED		
							18					202	75610	18	EACH	INLET REMOVED		
												202	75610	18	EACH	VALVE BOX REMOVED		
			2,839				38					203	10000	2,877	CY	ADDENDUM		
			10									203	20000	10	CY	NO. DATE DESCRIPTION		
												203	20000	10	CY	1 8/15/2022 EARTHWORK SUB-SUMMARY REVISION		
12,732				183			617					204	10000	13,532	SY	EXCAVATION		
		600										204	10000	600	SY	EMBANKMENT		
		400										204	13000	400	CY	SUBGRADE COMPACTION		
												204	20000	400	CY	EXCAVATION OF SUBGRADE		
		200										204	30010	200	CY	EMBANKMENT		
4												204	45000	4	HOUR	GRANULAR MATERIAL, TYPE B		
		600										204	50000	600	SY	PROOF ROLLING		
												204	50000	600	SY	GEOTEXTILE FABRIC		
			312.5									206	15100	312.5	FT	ANCHOR ASSEMBLY, MGS TYPE E (MASH 2016)		
			1									206	26150	1	EACH	ANCHOR ASSEMBLY, MGS TYPE T		
												206	26550	1	EACH	MGS BRIDGE TERMINAL ASSEMBLY, TYPE 1		
			1									206	35002	2	EACH	4" CONCRETE WALK		
							16,505					208	10000	16,505	SF	CURB RAMP		
			2,846									208	52000	2,846	SF	MONUMENT ASSEMBLY RECONSTRUCTED TO GRADE		
			5									208	52000	2,846	SF			
												623	39600	5	EACH			
	LS											SPECIAL	69098400	LS		SURVEY CONTROL VERIFICATION		13
																EROSION CONTROL		
	2											659	00100	2	EACH	SOIL ANALYSIS TEST		
	55											659	00300	55	CY	TOPSOIL		
	495											659	10000	495	SY	SEEDING AND MULCHING		
	25											659	14000	25	SY	REPAIR SEEDING AND MULCHING		
	25											659	15000	25	SY	INTER-SEEDING		
												659	20000	0.12	TON	COMMERCIAL FERTILIZER		
	0.12											659	31000	0.1	ACRE	LIME		
	0.1											659	35000	4	MGAL	WATER		
	4						39,900					832	30000	39,900	EACH	EROSION CONTROL		
																ENVIRONMENTAL / REMEDIATION		
		33										SPECIAL	69065016	33	TON	WORK INVOLVING PETROLEUM CONTAMINATED SOIL		14
		50										SPECIAL	69065022	50	GAL	WORK INVOLVING NON-REGULATED WATER		14
		50										SPECIAL	69065024	50	GAL	WORK INVOLVING REGULATED WATER		14
																DRAINAGE		
					3,080							605	14020	3,080	FT	6" BASE PIPE UNDERDRAINS WITH GEOTEXTILE FABRIC		
					205							611	00510	205	FT	6" CONDUIT, TYPE F FOR UNDERDRAIN OUTLETS		
					4							611	01100	4	FT	6" CONDUIT, TYPE C		
					57							611	04400	57	FT	12" CONDUIT, TYPE B		
					8							611	04600	8	FT	12" CONDUIT, TYPE C		
					4							611	05900	4	FT	15" CONDUIT, TYPE B		
					3							611	98150	3	EACH	CATCH BASIN, NO. 3		
					8							611	98180	8	EACH	CATCH BASIN, NO. 3A		
					1							611	98181	1	EACH	CATCH BASIN, NO. 3A, AS PER PLAN		13
					2							611	98370	2	EACH	CATCH BASIN, NO. 6		
					1							611	99010	1	EACH	INLET, NO. 2-A-20		
																DRAINAGE ALTERNATES		
					15						X	611	99655	15	EACH	MANHOLE ADJUSTED TO GRADE, AS PER PLAN (ALTERNATE 1)		13
		60									X	605	11100	60	FT	6" SHALLOW PIPE UNDERDRAINS (ALTERNATE 2)		
		25									X	611	00510	25	FT	6" CONDUIT, TYPE F FOR UNDERDRAIN OUTLETS (ALTERNATE 2)		
					15						X	611	99654	15	EACH	MANHOLE ADJUSTED TO GRADE (ALTERNATE 2)		
		1									X	611	99710	1	EACH	PRECAST REINFORCED CONCRETE OUTLET (ALTERNATE 2)		

GENERAL SUMMARY

DESIGN AGENCY



DESIGNER

MJT

REVIEWER

DEN 06/05/22

PROJECT ID

108370

SHEET TOTAL

60 157

REF. NO.	SHEET NO.	LOCATION	STATION		SIDE	202	202	202	606	606	606	606	609	623	620	626
			FROM	TO		CURB REMOVED FT	WALK REMOVED SF	GUARDRAIL REMOVED FT	GUARDRAIL, TYPE MGS WITH LONG POSTS FT	ANCHOR ASSEMBLY, MGS TYPE E EACH	ANCHOR ASSEMBLY, MGS TYPE T EACH	MGS BRIDGE TERMINAL ASSEMBLY, TYPE 1 EACH	CURB, TYPE 6 (ALTERNATE 1) FT	MONUMENT ASSEMBLY RECONSTRUCTED TO GRADE EACH	DELINEATOR, POST GROUND MOUNTED EACH	BARRIER REFLECTOR, TYPE 2 EACH
C-1	68 , 71	STATE ST./WOOSTER RD.	47+26.08	6+99.41	LT./RT.								487.19			
C-2	68 , 72	STATE ST./WOOSTER RD./MAY AVE.	47+35.88	699+59.71	RT./LT.								620.95			
C-3	71 , 69	WOOSTER RD./STATE ST./NEW ST.	6+99.41	99+43.68	LT./RT.								548.12			
C-4	69 72	HIRAM ST./WOOSTER RD./STATE ST./ROMIG AVE.	599+37.59	200+66.12	LT./RT.								776.93			
C-5	69	NEW ST./STATE ST./SWIGART ST.	99+43.68	299+45.03	LT./RT.								264.60			
C-6	69 - 70	ROMIG AVE./STATE ST.	200+66.12	58+51.17	RT.								455.91			
C-7	69 - 70	SWIGART ST./STATE ST.	299+45.03	58+51.17	LT.								316.29			
C-8	-	MAY AVE./WOOSTER RD.	699+59.71	15+21.56	RT.								107.05			
C-9	-	HIRAM ST./WOOSTER RD.	599+37.59	15+21.56	LT.								42.15			
GR-1	68	STATE ST.	47+18.0	49+18.0	LT.				125.00	1					1	3
GR-2	68	STATE ST.	47+32.0	49+57.0	RT.				187.50		1	1				4
M-1	68	STATE ST.	50+00.00		CL									1		
M-2	69	STATE ST.	54+22.08		LT.									1		
M-3	70	STATE ST.	57+19.84		LT.									1		
M-4	70	STATE ST.	58+47.60		CL									1		
M-5	72	WOOSTER RD.	14+82.30		LT.									1		
R-1	68	STATE ST.	47+18.0	49+19.1	LT.			201.35								
R-2	68	STATE ST.	47+32.1	49+57.3	RT.			226.08								
R-3	68 , 71	STATE ST./WOOSTER RD.	47+26.08	6+99.41	LT./RT.	487.67										
R-4	68 , 72	STATE ST./WOOSTER RD./MAY AVE.	47+35.88	699+59.71	RT./LT.	620.98										
R-5	68 , 71	STATE ST./WOOSTER RD.	47+26.08	6+99.41	LT./RT.		3153.62									
R-6	68 , 72	STATE ST./WOOSTER RD./MAY AVE.	47+35.56	699+59.71	RT./LT.		4201.91									
R-7	71 , 69	WOOSTER RD./STATE ST./NEW ST.	6+99.41	99+43.68	LT./RT.	548.43										
R-8	69 ,71, 72	WOOSTER RD./STATE ST./ROMIG AVE.	599+37.59	200+66.12	LT./RT.	780.48										
R-9	71 , 69	WOOSTER RD./STATE ST./NEW ST.	6+99.41	99+43.68	LT./RT.		3728.44									
R-10	69 ,71, 72	WOOSTER RD./STATE ST./ROMIG AVE.	599+37.59	200+66.12	LT./RT.		5553.14									
R-11	69	NEW ST./STATE ST./SWIGART ST.	99+43.68	299+45.03	LT./RT.	264.63										
R-12	69 - 70	ROMIG AVE./STATE ST.	200+66.12	58+51.17	RT.	456.36										
R-13	69	NEW ST./STATE ST./SWIGART ST.	99+43.68	299+45.03	LT./RT.		1619.64									
R-14	69 - 70	ROMIG AVE./STATE ST.	200+66.12	58+51.17	RT.		2992.76									
R-15	69 - 70	SWIGART ST./STATE ST.	299+45.03	58+51.17	LT.	315.49										
R-16	69 - 70	SWIGART ST./STATE ST.	299+45.20	58+51.17	LT.		1934.11									
R-17	72	MAY AVE./WOOSTER RD.	699+59.71	15+21.56	RT.	107.05										
R-18	72	MAY AVE./WOOSTER RD.	699+66.35	15+21.56	RT.		796.31									
R-19	72	HIRAM ST./WOOSTER RD.	599+37.59	15+21.56	LT.	42.15										
R-20	72	HIRAM ST./WOOSTER RD.	599+37.59	15+21.56	LT.		229.99									
SUBTOTALS						3623.24	24209.92	427.43	312.50	1	1	2	3619.19	5	1	7
TOTALS CARRIED TO GENERAL SUMMARY						3623	24210	427	312.5	1	1	2	3619	5	1	7

ALTERNATE 2																
REF. NO.	SHEET NO.	LOCATION	STATION		SIDE	609 CURB, TYPE 2-A										
			FROM	TO		FT										
C-1	68 , 71	STATE ST./WOOSTER RD.	47+26.08	6+99.41	LT./RT.	487.19										
C-2	68 , 72	STATE ST./WOOSTER RD./MAY AVE.	47+35.88	699+59.71	RT./LT.	620.95										
C-3	71 , 69	WOOSTER RD./STATE ST./NEW ST.	6+99.41	99+43.68	LT./RT.	548.12										
C-4	69 72	HIRAM ST./WOOSTER RD./STATE ST./ROMIG AVE.	599+37.59	200+66.12	LT./RT.	776.93										
C-5	69	NEW ST./STATE ST./SWIGART ST.	99+43.68	299+45.03	LT./RT.	264.60										
C-6	69 - 70	ROMIG AVE./STATE ST.	200+66.12	58+51.17	RT.	455.91										
C-7	69 - 70	SWIGART ST./STATE ST.	299+45.03	58+51.17	LT.	316.29										
C-8	72	MAY AVE./WOOSTER RD.	699+59.71	15+21.56	RT.	107.05										
C-9	72	HIRAM ST./WOOSTER RD.	599+37.59	15+21.56	LT.	42.15										
SUBTOTALS						3619.19										
TOTALS CARRIED TO GENERAL SUMMARY						3619										

REF. NO.	MAIN ROUTE	INTERSECTING ROUTE	DESIGN SHEET	QUADRANT RL=REAR LT, RR=REAR RT FL=FWD LT, FR=FWD RT (LOOKING UPSTATION)	CURB RAMP TYPE (SCD BF-7.1, SHEET 2/3)	608 CURB RAMP
CR-1	STATE ST.	WOOSTER RD.	68	RL	B2	150.20
CR-2	STATE ST.	WOOSTER RD.	68	RR	B2	148.41
CR-3	STATE ST.	WOOSTER RD.	68	FL	B2	135.16
CR-4	STATE ST.	WOOSTER RD.	68	FR	B2	149.68
CR-5	WOOSTER RD.	STATE ST.	71	RR	B2	149.55
CR-6	WOOSTER RD.	STATE ST.	71	RL	B2	143.56
CR-7	WOOSTER RD.	STATE ST.	71	FR	B2	143.79
CR-8	WOOSTER RD.	STATE ST.	71	FL	B2	145.54
CR-9	WOOSTER RD.	MAY AVE.	73	RL	B2	124.94
CR-10	WOOSTER RD.	MAY AVE.	73	RR	B2	121.27
CR-11	WOOSTER RD.	HIRAM ST.	74	RL	B2	177.58
CR-12	WOOSTER RD.	HIRAM ST.	74	RR	B2	184.57
CR-13	STATE ST.	NEW ST.	75	RL	B2	174.38
CR-14	STATE ST.	NEW ST.	75	RR	B2	170.24
CR-15	STATE ST.	ROMIG AVE.	76	FR	B2	163.94
CR-16	STATE ST.	ROMIG AVE.	76	FL	B2	220.68
CR-17	STATE ST.	SWIGART ST.	77	RL	B2	160.90
CR-18	STATE ST.	SWIGART ST.	77	RR	B2	182.03
SUBTOTALS						2846.42
TOTALS CARRIED TO GENERAL SUMMARY						2846

SHEET NO.	203		659	
	EXCAVATION	EMBANKMENT	SEEDING AND MULCHING	
	CY	CY	SY	
79	187		67	
80	318		94	
81	787	2	77	
82	450	2	86	
83	385		42	
84	515		72	
85	435	2	80	
86	381		105	
87	270		40	
88			1	
89	77			
90	361	1	67	
91	71	3	66	
92	427		42	
93	666		89	
94	236		75	
95	154		25	
96	460		58	
97	185		26	
SUBTOTALS				6365 10 1112
DEDUCT FOR DRIVEWAYS				-38 -617
DEDUCT FOR PAVEMENT REMOVAL				-3488 -617
SUBTOTALS				2839 10 495
TOTAL CARRIED TO SHEET NO. 13				495
TOTAL CARRIED TO GENERAL SUMMARY				2839 10

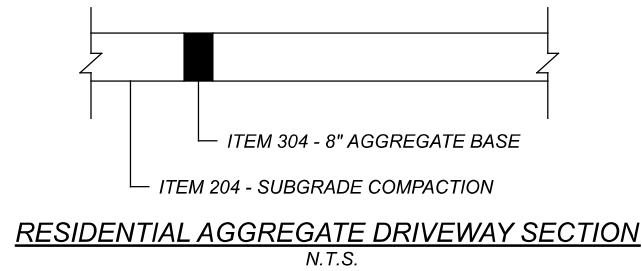
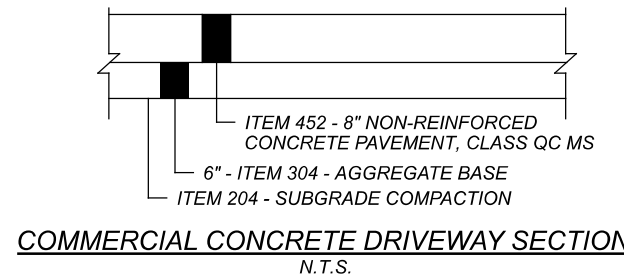
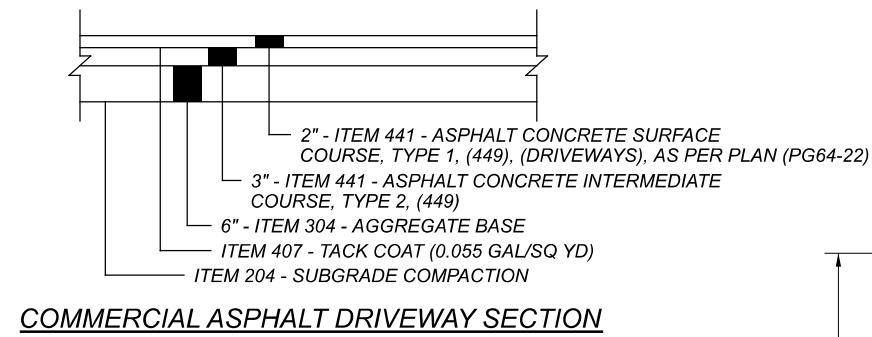
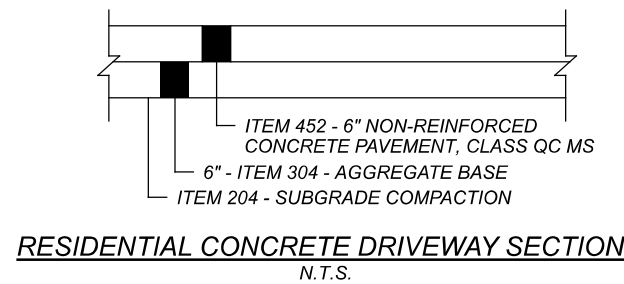
ADDENDUM		
NO.	DATE	DESCRIPTION
1	8/15/2022	EARTHWORK SUB-SUMMARY REVISION

ROADWAY SUB-SUMMARY

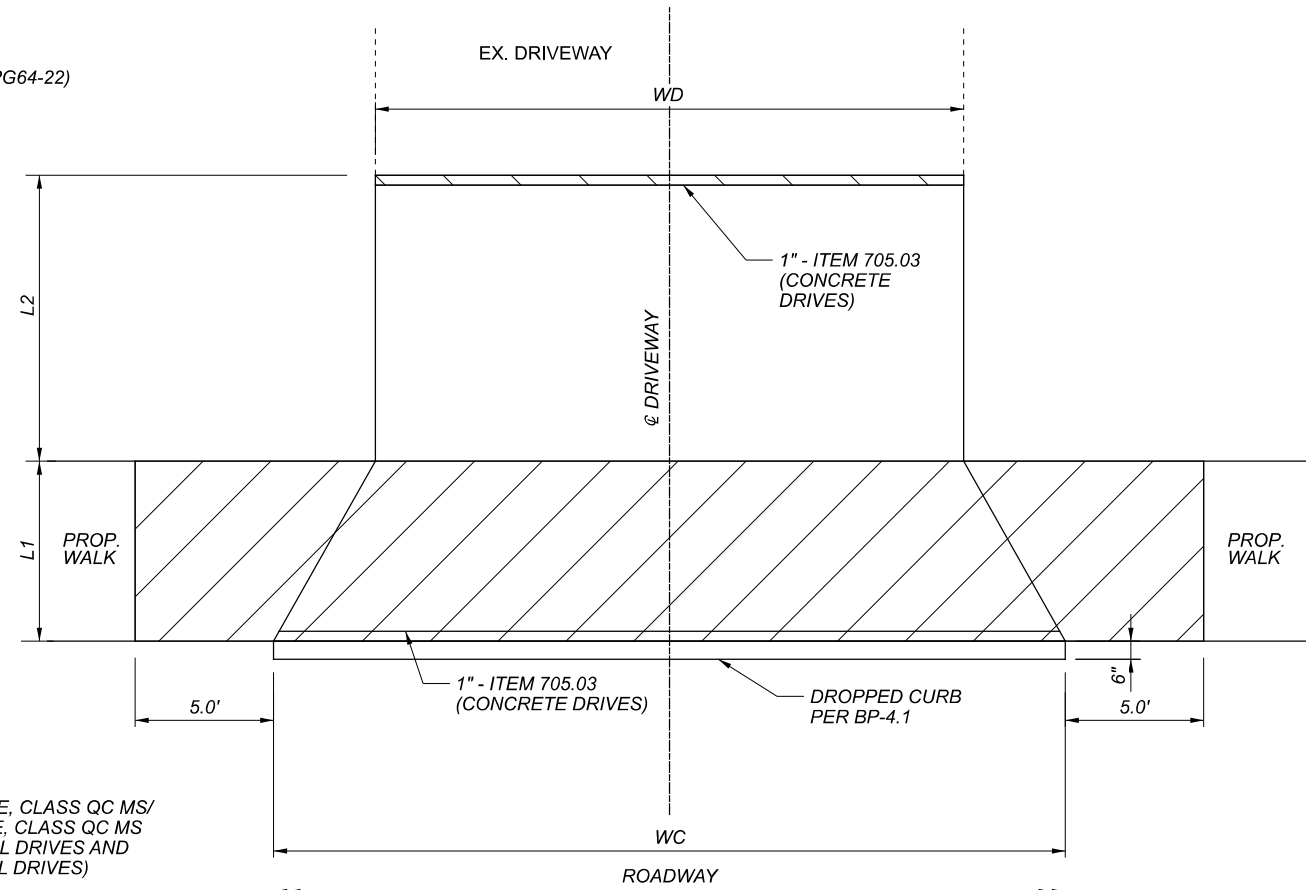
DESIGN AGENCY



DESIGNER: MJT
REVIEWER: MJT
PROJECT ID: 108370
SHEET TOTAL: 64 157



FOR ADDITIONAL DETAILS, SEE STANDARD CONSTRUCTION DRAWING BP-4.1



ITEM 452 - 6" NON-REINFORCED CONCRETE, CLASS QC MS/
ITEM 452 - 8" NON-REINFORCED CONCRETE, CLASS QC MS
(6" THICKNESS TO BE USED AT RESIDENTIAL DRIVES AND
8" THICKNESS TO BE USED AT COMMERCIAL DRIVES)

ADDENDUM		
NO.	DATE	DESCRIPTION
1	8/15/2022	DRIVEWAY SUB-SUMMARY REVISION

REFERENCE NO.	SHEET NO.	LOCATION	STATION	SIDE	DRIVE TYPE	DRIVE ANGLE (DEGREES)	EXISTING APRON MATERIAL	EXISTING DRIVE MATERIAL	PROPOSED APRON MATERIAL	PROPOSED DRIVE MATERIAL	APRON LENGTH "L1"		DRIVE LENGTH "L2"		WIDTH AT CURB "WC"		WIDTH OF DRIVE "WD"		APRON AREA	DRIVE AREA	TOTAL DRIVE AREA + APRON AREA	202		203	204	252	304	304	407	441	441	452	452	609																					
											FT	FT	FT	FT	SF	SF	SF	SY				FT	CY	SY	FT	CY	CY	GAL	CY	CY	SY	SY	FT																						
DR-1	71	WOOSTER RD.	8+45.06	LT.	COMM.	90	CONC.	ASPH.	CONC.	ASPH.	6.5	2.0	39.2	25.0	205.35	50.03	255.38	22.82		1.70	28.38	25.0	4.73		0.31	0.31	0.46																												
DR-2	71	WOOSTER RD.	8+78.42	RT.	COMM.	90	CONC.	CONC.	CONC.	CONC.	6.5	54.2	42.2	28.2	225.48	1447.49	1672.97	185.89			185.89	28.2	30.98												185.89																				
DR-3	71	WOOSTER RD.	9+07.27	LT.	COMM.	90	CONC.	ASPH.	CONC.	ASPH.	6.5	2.0	45.6	31.5	247.30	63.09	310.39	27.48		2.14	34.49	31.5	5.75		0.39	0.39	0.58								27.48																				
DR-4	72	WOOSTER RD.	11+60.54	RT.	COMM.	90	CONC.	ASPH.	CONC.	ASPH.	6.5	7.2	32.8	19.5	166.58	144.34	310.92	18.57		4.92	34.55	19.5	5.76		0.88	0.89	1.34								18.51																				
DR-5	72	WOOSTER RD.	12+80.86	RT.	COMM.	90	CONC.	ASPH.	CONC.	ASPH.	6.5	3.0	43.0	28.9	232.09	86.61	318.70	25.79	1.10	3.16	35.41	28.9	5.90		0.53	0.53	0.80								25.79	3.00																			
DR-6	72	WOOSTER RD.	13+21.11	LT.	COMM.	90	CONC.	ASPH.	CONC.	ASPH.	6.5	3.9	43.9	30.1	237.26	117.92	355.18	26.36	5.30	4.00	39.46	30.1	6.58		0.72	0.73	1.09								26.36	7.84																			
DR-7	69	STATE ST.	51+23.31	LT.	COMM.	85	CONC.	ASPH.	CONC.	ASPH.	6.5	2.0	43.5	28.0	231.10	56.64	287.74	25.68		1.92	31.97	28.0	5.33		0.35	0.35	0.52								25.68																				
DR-8	69	STATE ST.	52+16.61	LT.	COMM.	91	CONC.	ASPH.	CONC.	ASPH.	6.5	6.7	38.3	27.3	200.71	165.85	366.56	22.30	14.70	5.63	40.73	27.3	6.79		1.01	1.02	1.54								22.30	14.34																			
DR-9	69	STATE ST.	52+93.94	RT.	COMM.	102	CONC.	ASPH.	CONC.	ASPH.	6.6	6.4	45.0	30.2	243.77	193.97	437.74	27.09	12.27	6.59	48.64	30.2	8.11		1.19	1.20	1.80								27.09	12.72																			
DR-10	69	STATE ST.	55+93.94	RT.	RES.	60	CONC.	AGG.	CONC.	AGG.	7.5	10.9	36.9	16.7	181.30	181.50	362.80	20.14		4.48	40.31						4.48						20.14																						
DR-11	70	STATE ST.	57+10.53	RT.	RES.	123	CONC.	CONC.	CONC.	CONC.	7.9	11.9	38.5	17.7	191.47	210.57	402.04	44.67			44.67	17.7	7.45										44.67																						
DR-12	70	STATE ST.	57+90.28	RT.	RES.	110	CONC.	CONC.	CONC.	CONC.	6.9	8.5	27.4	11.1	125.22	95.33	220.55	24.51			24.51	11.1	4.08										24.51																						
DR-13	70	STATE ST.	57+97.14	LT.	RES.	95	CONC.	AGG.	CONC.	AGG.	6.5	14.0	24.5	10.0	109.89	141.78	251.67	13.98		3.50	27.96						3.50						12.21																						
SUBTOTALS																																											485.27	33.37	38.05	616.96	277.50	96.84	7.98	5.37	5.42	8.13	101.53	381.90	37.90
TOTALS																																											485.27	33.37	38.05	616.96	277.50	104.82	5.37	5.42	8.13	101.53	381.90	37.90	
TOTALS CARRIED TO GENERAL SUMMARY																																											485	33	38	617	278	105	5	5	8	102	382	38	