

ITEM 614, PORTABLE CHANGEABLE MESSAGE SIGNS, AS PER PLAN

THE CONTRACTOR SHALL FURNISH, INSTALL, MAINTAIN AND REMOVE, WHEN NO LONGER NEEDED, A CHANGEABLE MESSAGE SIGN. THE SIGN SHALL BE OF A TYPE SHOWN ON A LIST OF APPROVED PCMS UNITS AVAILABLE ON THE OFFICE OF MATERIALS MANAGEMENT WEB PAGE. THE LIST CONTAINS CLASS A AND B UNITS WITH MINIMUM LEGIBILITY DISTANCES OF 800 FEET AND 650 FEET, RESPECTIVELY.

EACH SIGN SHALL BE TRAILER-MOUNTED AND EQUIPPED WITH A FUNCTIONAL DIMMING MECHANISM, TO DIM THE SIGN DURING DARKNESS, AND A TAMPER AND VANDAL PROOF ENCLOSURE. EACH SIGN SHALL BE PROVIDED WITH APPROPRIATE TRAINING AND OPERATION INSTRUCTIONS TO ENABLE ON-SITE PERSONNEL TO OPERATE AND TROUBLESHOOT THE UNIT. THE SIGN SHALL ALSO BE CAPABLE OF BEING POWERED BY AN ELECTRICAL SERVICE DROP FROM A LOCAL UTILITY COMPANY. THE PCMS SHALL BE DELINEATED IN ACCORDANCE WITH C&MS 614.03.

PLACEMENT, OPERATION, MAINTENANCE AND ALL ACTIVATION OF THE SIGNS BY THE CONTRACTOR SHALL BE AS DIRECTED BY THE ENGINEER. THE PCMS SHALL BE LOCATED IN A HIGHLY VISIBLE POSITION YET PROTECTED FROM TRAFFIC. THE CONTRACTOR SHALL, AT THE DIRECTION OF THE ENGINEER, RELOCATE THE PCMS TO IMPROVE VISIBILITY OR ACCOMMODATE CHANGED CONDITIONS. WHEN NOT IN USE, THE PCMS SHALL BE TURNED OFF. ADDITIONALLY, WHEN NOT IN USE FOR EXTENDED PERIODS OF TIME, THE PCMS SHALL BE TURNED AWAY FROM ALL TRAFFIC.

THE ENGINEER SHALL BE PROVIDED ACCESS TO EACH SIGN UNIT AND SHALL BE PROVIDED WITH APPROPRIATE TRAINING AND OPERATION INSTRUCTIONS TO ENABLE ODOT PERSONNEL TO OPERATE AND TROUBLESHOOT THE UNIT, AND TO REVISE SIGN MESSAGES, IF NECESSARY.

ALL MESSAGES TO BE DISPLAYED ON THE SIGN WILL BE PROVIDED BY THE ENGINEER. A LIST OF ALL REQUIRED PRE-PROGRAMMED MESSAGES WILL BE GIVEN TO THE CONTRACTOR AT THE PROJECT PRECONSTRUCTION CONFERENCE. THE SIGN SHALL HAVE THE CAPABILITY TO STORE UP TO 99 MESSAGES. MESSAGE MEMORY OR PRE-PROGRAMMED DISPLAYS SHALL NOT BE LOST AS A RESULT OF POWER FAILURES TO THE ON-BOARD COMPUTER. THE SIGN LEGEND SHALL BE CAPABLE OF BEING CHANGED IN THE FIELD. THREE-LINE PRESENTATION FORMATS WITH UP TO SIX MESSAGE PHASES SHALL BE SUPPORTED. PCMS FORMAT SHALL PERMIT THE COMPLETE MESSAGE FOR EACH PHASE TO BE READ AT LEAST TWICE.

THE PCMS SHALL CONTAIN AN ACCURATE CLOCK AND PROGRAMMING LOGIC WHICH WILL ALLOW THE SIGN TO BE ACTIVATED, DEACTIVATED OR MESSAGES CHANGED AUTOMATICALLY AT DIFFERENT TIMES OF THE DAY FOR DIFFERENT DAYS OF THE WEEK.

ITEM 614, PORTABLE CHANGEABLE MESSAGE SIGNS, AS PER PLAN (CONT...)

(THE PCMS SHALL CONTAIN A CELLULAR TELEPHONE DATA LINK WHICH WILL (IN ACTIVE CELLULAR PHONE AREAS) ALLOW REMOTE SIGN ACTIVATION, MESSAGE CHANGES, MESSAGE ADDITIONS AND REVISIONS TO TIME OF DAY PROGRAMS. THE SYSTEM SHALL ALSO PERMIT VERIFICATION OF CURRENT AND PROGRAMMED MESSAGES. ONE REMOTE DATA INPUT DEVICE (LAPTOP COMPUTER PLUS MODEM OR EQUIVALENT) SHALL BE FURNISHED FOR USE BY THE DISTRICT TRAFFIC ENGINEER, OR EQUIVALENT, AND SHALL BE INSURED AGAINST THEFT.) THE PCMS UNIT SHALL BE MAINTAINED IN GOOD WORKING ORDER BY THE CONTRACTOR IN ACCORDANCE WITH THE PROVISIONS OF C&MS 614.07. THE CONTRACTOR SHALL, PRIOR TO ACTIVATING THE UNIT, MAKE ARRANGEMENTS, WITH AN AUTHORIZED SERVICE AGENT FOR THE PCMS, TO ASSURE PROMPT SERVICE IN THE EVENT OF FAILURE. ANY FAILURE SHALL NOT RESULT IN THE SIGN BEING OUT OF SERVICE FOR MORE THAN 12 HOURS, INCLUDING WEEKENDS. FAILURE TO COMPLY MAY RESULT IN AN ORDER TO STOP WORK AND OPEN ALL TRAFFIC LANES AND/OR IN THE DEPARTMENT TAKING APPROPRIATE ACTION TO SAFELY CONTROL TRAFFIC. THE ENTIRE COST TO CONTROL TRAFFIC, ACCRUED BY THE DEPARTMENT DUE TO THE CONTRACTOR'S NONCOMPLIANCE, WILL BE DEDUCTED FROM MONEYS DUE, OR TO BECOME DUE THE CONTRACTOR ON HIS CONTRACT.

THE CONTRACTOR SHALL BE RESPONSIBLE FOR 24-HOUR-PER-DAY OPERATION AND MAINTENANCE OF THESE SIGNS ON THE PROJECT FOR THE DURATION OF THE PHASES WHEN THE PLAN REQUIRES THEIR USE.

PAYMENT FOR THE ABOVE DESCRIBED ITEM SHALL BE AT THE CONTRACT UNIT PRICE. PAYMENT SHALL INCLUDE ALL LABOR, MATERIALS, EQUIPMENT, FUELS, LUBRICATING OILS, SOFTWARE, HARDWARE AND INCIDENTALS TO PERFORM THE ABOVE DESCRIBED WORK.

ITEM 614, PORTABLE CHANGEABLE MESSAGE SIGN, AS PER PLAN 24 SIGN MONTH ASSUMING 24 PCMS SIGNS FOR 1 MONTH

ITEM 614 - LAW ENFORCEMENT OFFICER (WITH PATROL CAR) FOR ASSISTANCE DURING CONSTRUCTION OPERATIONS

USE OF LAW ENFORCEMENT OFFICERS (LEOS) BY CONTRACTORS OTHER THAN THE USES SPECIFIED BELOW WILL NOT BE PERMITTED AT PROJECT COST. LEOS SHOULD NOT BE USED WHERE THE OMUTCD INTENDS THAT FLAGGERS BE USED.

IN ADDITION TO THE REQUIREMENTS OF CMS 614 AND THE OMUTCD, A UNIFORMED LEO WITH AN OFFICIAL PATROL CAR (CAR WITH TOP-MOUNTED EMERGENCY FLASHING LIGHTS AND COMPLETE MARKINGS OF THE APPROPRIATE LAW ENFORCEMENT AGENCY) SHALL BE PROVIDED FOR THE FOLLOWING TRAFFIC CONTROL TASKS:

DURING THE ENTIRE ADVANCE PREPARATION AND CLOSURE SEQUENCE WHERE COMPLETE BLOCKAGE OF TRAFFIC IS REQUIRED.

DURING A TRAFFIC SIGNAL INSTALLATION WHEN IMPACTING THE NORMAL FUNCTION OF THE SIGNAL OR THE FLOW OF TRAFFIC OR WHEN TRAFFIC NEEDS TO BE DIRECTED THROUGH AN ENERGIZED TRAFFIC SIGNAL CONTRARY TO THE SIGNAL DISPLAY (E.G., DIRECTING MOTORISTS THROUGH A RED LIGHT).

FOR LANE CLOSURES: DURING INITIAL SET-UP PERIODS, TEAR DOWN PERIODS, SUBSTANTIAL SHIFTS OF A CLOSURE POINT OR WHEN NEW LANE CLOSURE ARRANGEMENTS ARE INITIATED FOR LONG-TERM LANE CLOSURES/SHIFTS (FOR THE FIRST AND LAST DAY OF MAJOR CHANGES IN TRAFFIC CONTROL SETUP).

LEOS SHOULD NOT FORGO THEIR TRAFFIC CONTROL RESPONSIBILITIES TO APPREHEND MOTORISTS FOR ROUTINE TRAFFIC VIOLATIONS. HOWEVER, IF A MOTORIST'S ACTIONS ARE CONSIDERED TO BE RECKLESS, THEN PURSUIT OF THE MOTORIST IS APPROPRIATE.

IN GENERAL LEOS SHOULD BE POSITIONED IN ADVANCE OF AND ON THE SAME SIDE AS THE LANE RESTRICTION OR AT THE POINT OF ROAD CLOSURE, AND TO MANUALLY CONTROL TRAFFIC MOVEMENTS THROUGH SIGNALIZED INTERSECTIONS IN WORK ZONE.

THE LEOS WORK AT THE DIRECTION OF THE ENGINEER. THE CONTRACTOR IS RESPONSIBLE FOR SECURING THE SERVICES OF THE LEOS WITH THE APPROPRIATE AGENCIES AND COMMUNICATING THE INTENTIONS OF THE PLANS WITH RESPECT TO DUTIES OF THE LEOS. THE ENGINEER SHALL HAVE FINAL CONTROL OVER THE LEOS' DUTIES AND PLACEMENT, AND WILL RESOLVE ANY ISSUES THAT MAY ARISE BETWEEN THE TWO PARTIES.

THE LEO SHALL REPORT IN TO THE CONTRACTOR PRIOR TO THE START OF THE SHIFT, IN ORDER TO RECEIVE INSTRUCTIONS REGARDING SPECIFIC WORK ASSIGNMENTS DURING HIS/HER SHIFT. THE LEO IS EXPECTED TO STAY AT THE PROJECT SITE FOR THE ENTIRE DURATION OF HIS/HER SHIFT. THE LEO SHALL REPORT TO THE CONTRACTOR AT THE END OF HIS/HER SHIFT. ONCE THE LEO HAS COMPLETED THE DUTIES DESCRIBED ABOVE AND STILL HAS TIME REMAINING ON HIS/HER SHIFT, THE LEO MAY BE ASKED TO PATROL THROUGH THE WORK ZONE (WITH FLASHING LIGHTS OFF) OR BE PLACED AT A LOCATION TO DETER MOTORISTS FROM SPEEDING. SHOULD IT BE NECESSARY TO LEAVE THE PROJECT SITE, THE LEO SHALL NOTIFY THE ENGINEER. THE CONTRACTOR SHALL PROVIDE THE LEO WITH A TWO-WAY COMMUNICATION DEVICE WHICH SHALL BE RETURNED TO THE CONTRACTOR AT THE END OF HIS/HER SHIFT.

ITEM 614 - LAW ENFORCEMENT OFFICER (WITH PATROL CAR) FOR ASSISTANCE DURING CONSTRUCTION OPERATIONS (CONT...)

LEOS (WITH PATROL CAR) REQUIRED BY THE TRAFFIC MAINTENANCE TASKS ABOVE SHALL BE PAID FOR ON A UNIT PRICE (HOURLY) BASIS UNDER ITEM 614, LAW ENFORCEMENT OFFICER (WITH PATROL CAR) FOR ASSISTANCE. THE FOLLOWING ESTIMATED QUANTITIES HAVE BEEN CARRIED TO THE GENERAL SUMMARY.

ITEM 614, LAW ENFORCEMENT OFFICER WITH PATROL CAR FOR ASSISTANCE 300 HOURS

THE HOURS PAID SHALL INCLUDE ANY MINIMUM SHOW-UP TIME REQUIRED BY THE LAW ENFORCEMENT AGENCY INVOLVED.

ANY ADDITIONAL COSTS (ADMINISTRATIVE OR OTHERWISE) INCURRED BY THE CONTRACTOR TO OBTAIN THE SERVICES OF AN LEO ARE INCLUDED WITH THE BID UNIT PRICE FOR ITEM 614, LAW ENFORCEMENT OFFICER WITH PATROL CAR FOR ASSISTANCE.

NOTIFICATION OF TRAFFIC RESTRICTIONS

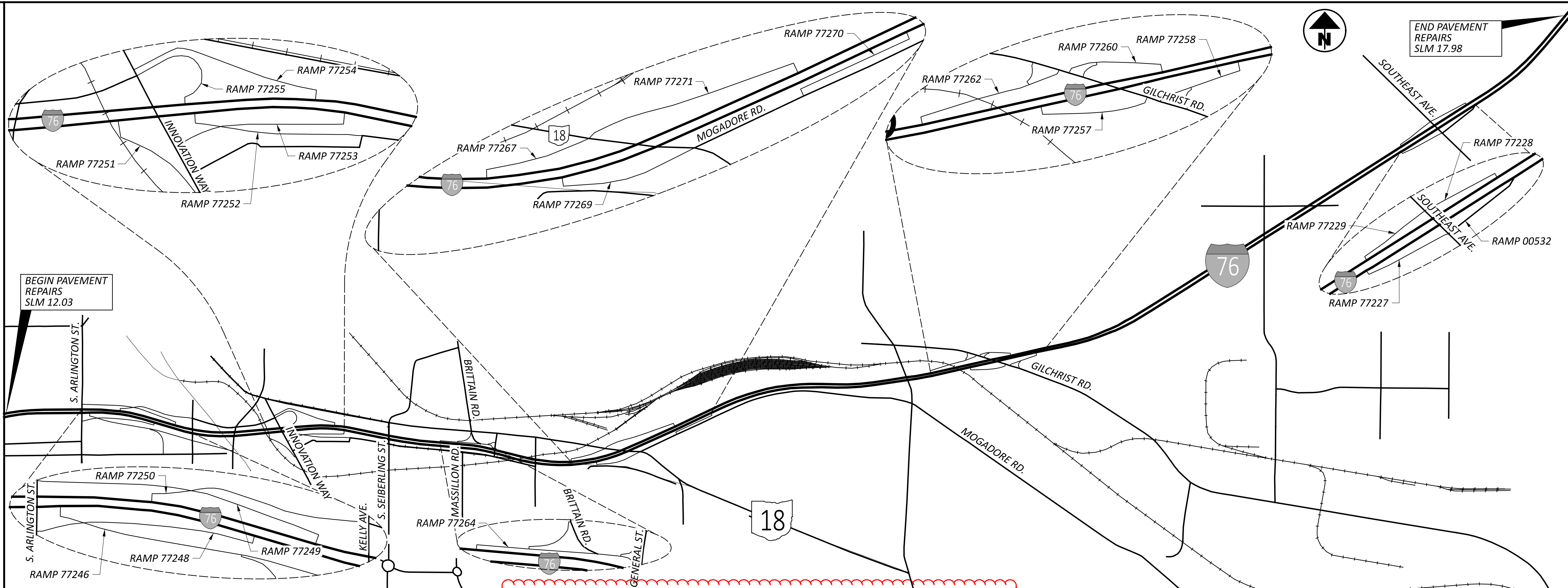
THROUGHOUT THE DURATION OF THE PROJECT, THE CONTRACTOR SHALL NOTIFY THE PROJECT ENGINEER IN WRITING OF ALL TRAFFIC RESTRICTIONS AND UPCOMING MAINTENANCE OF TRAFFIC CHANGES. THE CONTRACTOR SHALL ENSURE THE WRITTEN NOTIFICATION IS SUBMITTED IN A TIMELY MANNER TO ALLOW THE PROJECT ENGINEER TO MEET THE REQUIRED TIME FRAMES SET FORTH IN THE TABLE BELOW TO INFORM THE SPECIAL HAULING PERMITS SECTION (HAULING.PERMITS@DOT.OHIO.GOV) AND THE DISTRICT PUBLIC INFORMATION OFFICE (PIO). THIS NOTIFICATION SHALL BE RECEIVED BY THE PROJECT ENGINEER PRIOR TO THE PHYSICAL SETUP OF ANY APPLICABLE SIGNS OR MESSAGE BOARDS.

INFORMATION SHOULD INCLUDE, BUT IS NOT LIMITED TO, ALL CONSTRUCTION ACTIVITIES THAT IMPACT OR INTERFERE WITH TRAFFIC AND SHALL LIST THE SPECIFIC LOCATION, TYPE OF WORK, ROAD STATUS, DATE AND TIME OF RESTRICTION, DURATION OF RESTRICTION, NUMBER OF LANES MAINTAINED, NUMBER OF LANES CLOSED, MINIMUM VERTICAL CLEARANCE, MINIMUM WIDTH OF DRIVABLE PAVEMENT, DETOUR ROUTES, IF APPLICABLE, AND ANY OTHER INFORMATION REQUESTED BY THE PROJECT ENGINEER.

NOTIFICATION TIME TABLE		
ITEM	DURATION OF CLOSURE	NOTICE DUE TO PERMITS & PIO
ROAD & RAMP CLOSURES	>= 2 WEEKS	21 CALENDAR DAYS PRIOR TO CLOSURE
	> 12 HOURS & < 2 WEEKS	14 CALENDAR DAYS PRIOR TO CLOSURE
	< 12 HOURS	4 BUSINESS DAYS PRIOR TO CLOSURE
LANE CLOSURES & RESTRICTIONS	>= 2 WEEKS	14 CALENDAR DAYS PRIOR TO CLOSURE
	< 2 WEEKS	5 BUSINESS DAYS PRIOR TO CLOSURE
START OF CONSTRUCTION & TRAFFIC PATTERNS CHANGES	N/A	14 CALENDAR DAYS PRIOR TO IMPLEMENTATION

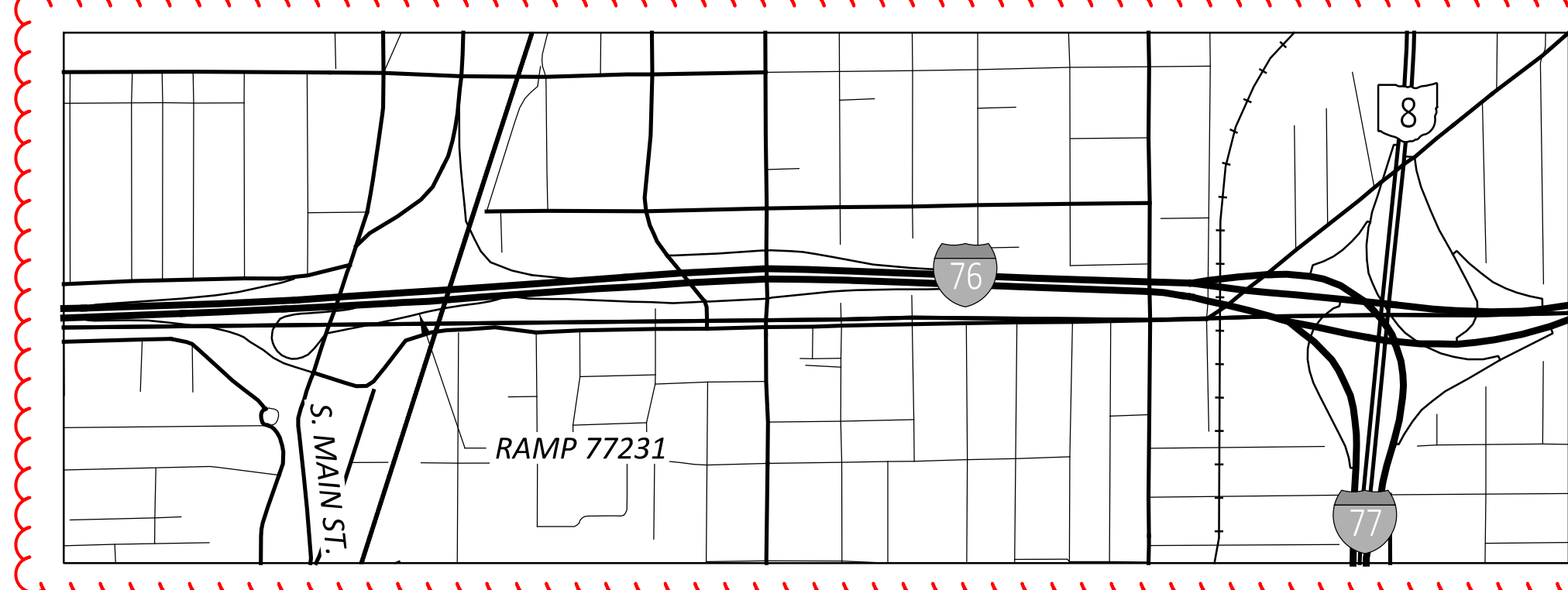
ANY UNFORESEEN CONDITIONS NOT SPECIFIED IN THE PLANS REQUIRING TRAFFIC RESTRICTIONS SHALL ALSO BE REPORTED TO THE PROJECT ENGINEER USING THE NOTIFICATION TIME TABLE.





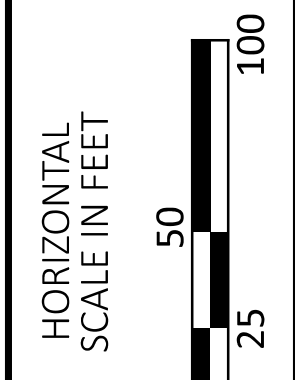
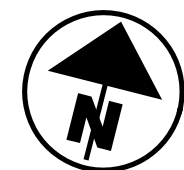
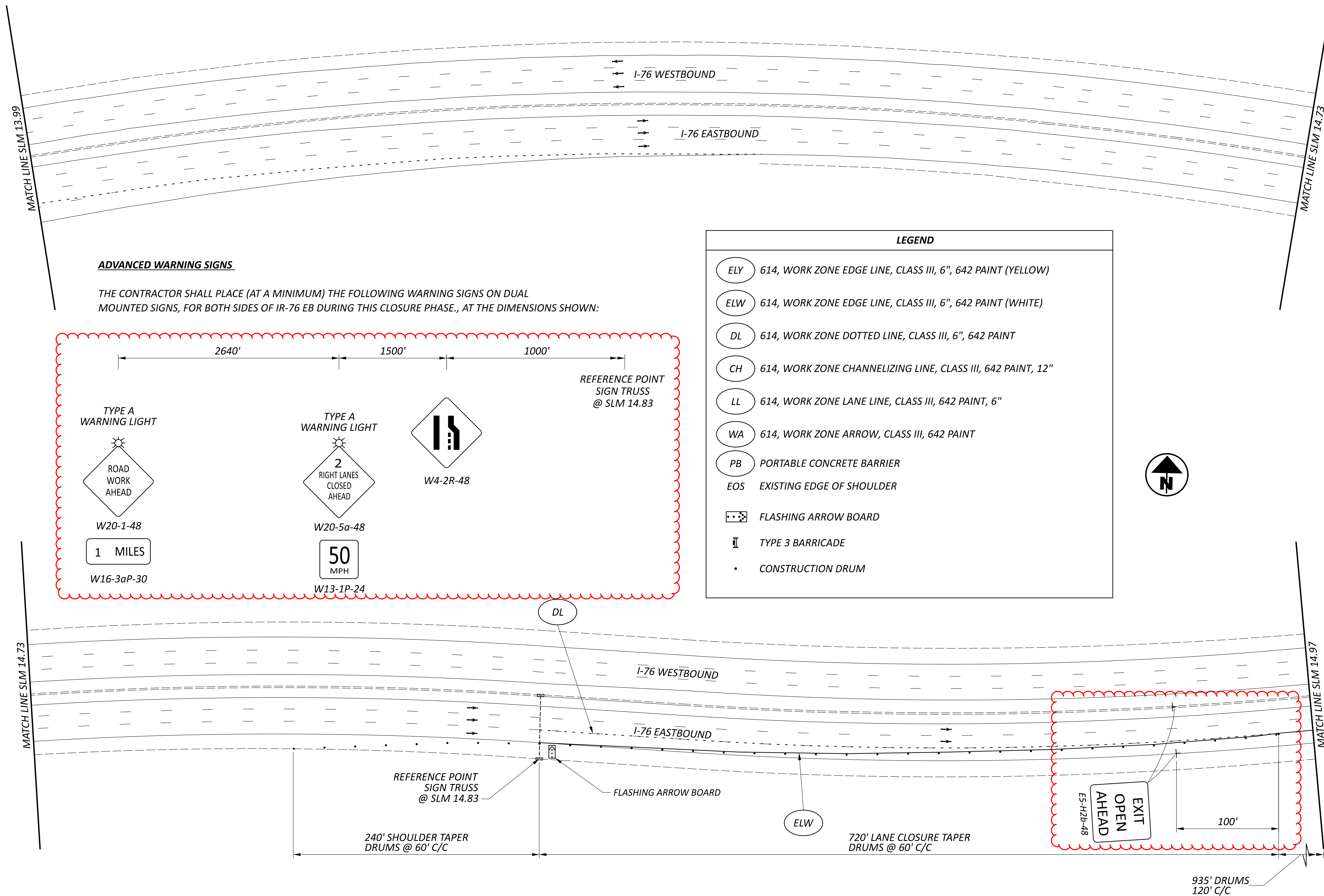
IR-76 RAMP CLOSURES* (WESTBOUND)					
RAMP	PROPOSED WORK	PERMITTED CLOSURE TIMES	DURATION	DETOUR ROUTE	APPROX. NUMBER OF PCMS
RAMP 77246 (I-76 EB TO ARLINGTON ST./KELLY AVE.)	PAVEMENT REPAIRS	6:30 PM FRIDAY TO 6:30 AM MONDAY	3 DAYS	CONTINUE ON I-76 EB TO INNOVATION WAY EXIT. CONTINUE SOUTH ON INNOVATION WAY TO ROUNDABOUT AND HEAD NORTH ON S. SEIBERLING ST. TURN LEFT ON E. MARKET. CONTINUE TO 3RD AVE.	2
RAMP 77250 (KELLY AVE. TO I-76 WB)	PAVEMENT REPAIRS	6:30 PM FRIDAY TO 6:30 AM MONDAY	3 DAYS	CONTINUE NORTH ON KELLY AVE. TURN LEFT ON SR-18. TURN LEFT ONTO SR-8 SOUTHBOUND. TAKE I-76 WB EXIT.	2
RAMP 77248 (S. ARLINGTON ST. TO I-76 EB)	PAVEMENT REPAIRS	6:30 PM FRIDAY TO 6:30 AM MONDAY	3 DAYS	CONTINUE NORTH ON S. ARLINGTON ST. TURN LEFT ONTO SR-18. TURN LEFT ONTO SR-8 SB. CONTINUE TO I-77 SOUTHBOUND. TAKE I-277 WB RAMP. TAKE I-76 EB RAMP.	2
RAMP 77249 (I-76 WB TO S. ARLINGTON ST.)	PAVEMENT REPAIRS	6:30 PM FRIDAY TO 6:30 AM MONDAY	3 DAYS	CONTINUE ON I-76 WB. TAKE I-77 SB EXIT. CONTINUE SOUTH AND TAKE E. WILBETH RD. EXIT. TURN LEFT ONTO E. WILBETH RD. HEAD EAST TOWARD S. ARLINGTON ST.	2
RAMP 77251 (I-76 EB TO INNOVATION WAY)	PAVEMENT REPAIRS	6:30 PM FRIDAY TO 6:30 AM MONDAY	3 DAYS	CONTINUE ON I-76 EB AND TAKE RAMP 77252 EXIT TO S. SEIBERLING ST. TURN RIGHT ONTO S. SEIBERLING ST. AND CONTINUE SOUTH TO ROUNDABOUT. TAKE FIRST RIGHT ONTO INNOVATION WAY.	2
RAMP 77252 (I-76 EB TO BRITAIN RD./S. SEIBERLING ST.)	PAVEMENT REPAIRS	6:30 PM FRIDAY TO 6:30 AM MONDAY	3 DAYS	CONTINUE ON I-76 EB. TAKE RAMP 77269 EXIT TO SR-18. TURN LEFT ONTO SR-18. TURN LEFT ONTO SR-8 SB. CONTINUE TO I-77 SOUTHBOUND. TAKE I-277 WB RAMP. TAKE I-76 EB RAMP.	2
RAMP 77253 (INNOVATION WAY TO I-76 EB)	PAVEMENT REPAIRS	6:30 PM FRIDAY TO 6:30 AM MONDAY	3 DAYS	CONTINUE NORTH ON INNOVATION WAY. TURN LEFT ONTO SR-18. TURN LEFT ONTO SR-8 SB. CONTINUE TO I-77 SOUTHBOUND. TAKE I-277 WB RAMP. TAKE I-76 WB RAMP.	2
RAMP 77255 (INNOVATION WAY TO I-76 WB)	PAVEMENT REPAIRS	6:30 PM FRIDAY TO 6:30 AM MONDAY	3 DAYS	CONTINUE NORTH ON INNOVATION WAY. TURN LEFT ONTO SR-18. TURN LEFT ONTO SR-8 SOUTHBOUND. TAKE I-76 WB EXIT.	2
RAMP 77254 (I-76 WB TO INNOVATION WAY)	PAVEMENT REPAIRS	6:30 PM FRIDAY TO 6:30 AM MONDAY	3 DAYS	CONTINUE ON I-76 WB. TAKE RAMP 77249 EXIT TO S. ARLINGTON ST. TURN LEFT ONTO S. ARLINGTON ST. TURN LEFT ONTO 5TH AVE. TURN LEFT ONTO KELLY AVE. TURN RIGHT ONTO 3RD AVE AND CONTINUE TO INNOVATION WAY	2
RAMP 77264 (BRITAIN RD. TO I-76 WB)	PAVEMENT REPAIRS	6:30 PM FRIDAY TO 6:30 AM MONDAY	3 DAYS	STAY LEFT ON BRITAIN RD. TURN LEFT ONTO SR-18. TURN LEFT ONTO SR-8 SOUTHBOUND. TAKE I-76 WB EXIT.	2
RAMP 77267 (SR-18 TO I-76 WB)	PAVEMENT REPAIRS	6:30 PM FRIDAY TO 6:30 AM MONDAY	3 DAYS	CONTINUE NORTH ON SR-18. TURN LEFT ONTO SR-8 SOUTHBOUND. TAKE I-76 WB EXIT.	2

IR-76 RAMP CLOSURES* (WESTBOUND)					
RAMP	PROPOSED WORK	PERMITTED CLOSURE TIMES	DURATION	DETOUR ROUTE	APPROX. NUMBER OF PCMS
RAMP 77231 (S. MAIN ST. TO I-76 EB)	NONE	6:30 PM FRIDAY TO 6:30 AM MONDAY	3 DAYS	CONTINUE ON MAIN ST. TO BROADWAY. CONTINUE NORTH ON BROADWAY TO E. MARKET ST. TURN RIGHT ON E. MARKET ST. AND CONTINUE SR-8. TAKE SR-8 SOUTHBOUND AND CONTINUE TO I-77 SOUTHBOUND. TAKE I-277 WB RAMP. TAKE I-76 EB RAMP.	2



IR-76 RAMP CLOSURES* (EASTBOUND)					
RAMP	PROPOSED WORK	PERMITTED CLOSURE TIMES	DURATION	DETOUR ROUTE	APPROX. NUMBER OF PCMS
RAMP 77269 (I-76 EB TO SR-18)	PAVEMENT REPAIRS	6:30 PM FRIDAY TO 6:30 AM MONDAY	3 DAYS	CONTINUE ON I-76 EB. TAKE RAMP 77257 EXIT TOWARD GILCHRIST RD. TURN LEFT ONTO GILCHRIST RD. TURN LEFT ONTO CANTON RD. HEAD SOUTH TOWARD ROUNDABOUT. TAKE FIRST RIGHT ON ROUNDABOUT TO SR-18.	2
RAMP 77271 (I-76 WB TO SR-18)	PAVEMENT REPAIRS	6:30 PM FRIDAY TO 6:30 AM MONDAY	3 DAYS	CONTINUE ON I-76 WB. TAKE RAMP 77254 EXIT TOWARD INNOVATION WAY. TURN RIGHT ON INNOVATION WAY. CONTINUE TO SR-18.	2
RAMP 77270 (MOGADORE RD. TO I-76 EB)	PAVEMENT REPAIRS	6:30 PM FRIDAY TO 6:30 AM MONDAY	3 DAYS	CONTINUE ON MOGADORE RD. TURN LEFT ONTO SR-532. CONTINUE ON SR-532 TO I-76 EB RAMP.	2
RAMP 77262 (GILCHRIST RD. TO I-76 WB)	PAVEMENT REPAIRS	6:30 PM FRIDAY TO 6:30 AM MONDAY	3 DAYS	CONTINUE NORTH ON GILCHRIST RD. TURN LEFT ONTO N. CANTON RD. TURN RIGHT ONTO MOGADORE RD. TURN RIGHT ONTO SR-18. TURN LEFT ONTO SR-8 SOUTHBOUND. TAKE I-76 WB EXIT.	2
RAMP 77257 (I-76 EB TO GILCHRIST RD.)	PAVEMENT REPAIRS	6:30 PM FRIDAY TO 6:30 AM MONDAY	3 DAYS	CONTINUE ON I-76 EB. TAKE RAMP 77227 EXIT TOWARD SOUTHEAST AVE. TURN RIGHT ONTO SOUTHEAST AVE. TURN LEFT ONTO NEWTON ST. TURN LEFT ONTO N. CANTON RD TOWARD GILCHRIST RD.	2
RAMP 77260 (I-76 WB TO GILCHRIST RD.)	PAVEMENT REPAIRS	6:30 PM FRIDAY TO 6:30 AM MONDAY	3 DAYS	CONTINUE ON I-76 WB. TAKE RAMP 77271 EXIT TOWARD SR-18. TURN LEFT ONTO SR-18. CONTINUE ON SR-18 TO ROUNDABOUT. TAKE THIRD EXIT ON ROUNDABOUT TO CANTON RD. CONTINUE ON CANTON RD. TO GILCHRIST RD.	2
RAMP 77258 (GILCHRIST RD. TO I-76 EB)	PAVEMENT REPAIRS	6:30 PM FRIDAY TO 6:30 AM MONDAY	3 DAYS	CONTINUE NORTH ON GILCHRIST RD. TURN LEFT ON N. CANTON RD. TURN LEFT ONTO MOGADORE RD. TURN LEFT ONTO SR-532. CONTINUE ON SR-532 TO I-76 EB RAMP.	2
RAMP 77227 (I-76 EB TO SOUTHEAST AVE.)	PAVEMENT REPAIRS	6:30 PM FRIDAY TO 6:30 AM MONDAY	3 DAYS	CONTINUE ON I-76 EB. TAKE EXIT RAMP TO TALLMADGE RD. TURN LEFT ONTO TALLMADGE RD. TAKE EXIT RAMP TO I-76 WB. CONTINUE ON I-76 WB. TAKE RAMP 77228 EXIT TO SOUTHEAST AVE.	2
RAMP 77229 (SOUTHEAST AVE. TO I-76 WB)	PAVEMENT REPAIRS	6:30 PM FRIDAY TO 6:30 AM MONDAY	3 DAYS	CONTINUE SOUTH ON SOUTHEAST AVE. TURN RIGHT ONTO NEWTON ST. TURN LEFT ONTO N. CANTON RD. TURN LEFT ONTO GILCHRIST RD. TAKE RAMP 77262 EXIT TO I-76 WB.	2
RAMP 77228 (I-76 WB TO SOUTHEAST AVE.)	PAVEMENT REPAIRS	6:30 PM FRIDAY TO 6:30 AM MONDAY	3 DAYS	CONTINUE ON I-76 WB. TAKE RAMP 77260 EXIT TO GILCHRIST RD. TURN RIGHT ONTO GILCHRIST RD. TURN RIGHT ONTO N. CANTON RD. TURN RIGHT ONTO NEWTON ST. CONTINUE ON NEWTON ST. TO SOUTHEAST AVE.	2
RAMP 00532 (SOUTHEAST AVE. TO I-76 EB)	PAVEMENT REPAIRS	6:30 PM FRIDAY TO 6:30 AM MONDAY	3 DAYS	CONTINUE NORTH ON SOUTHEAST AVE. TURN LEFT ONTO EASTWOOD AVE. TURN LEFT ONTO N. CANTON RD. TURN LEFT ONTO GILCHRIST RD. TAKE RAMP 77258 EXIT TOWARD I-76 EB	2

** USE RAMP CLOSURES AS NEEDED FOR PAVEMENT REPAIRS. PROJECT ENGINEER SHALL DETERMINE LOCATIONS FOR REPAIRS.*
 EXIT RAMP CLOSURES SHALL BE COORDINATED TO ENSURE THAT DETOUR ROUTES REMAIN ACCESSIBLE.

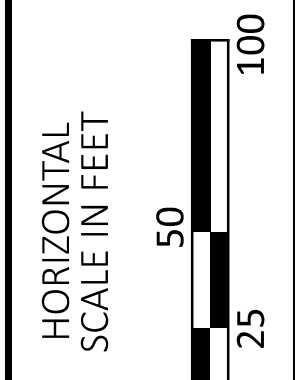
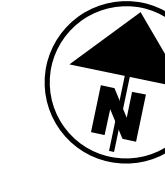
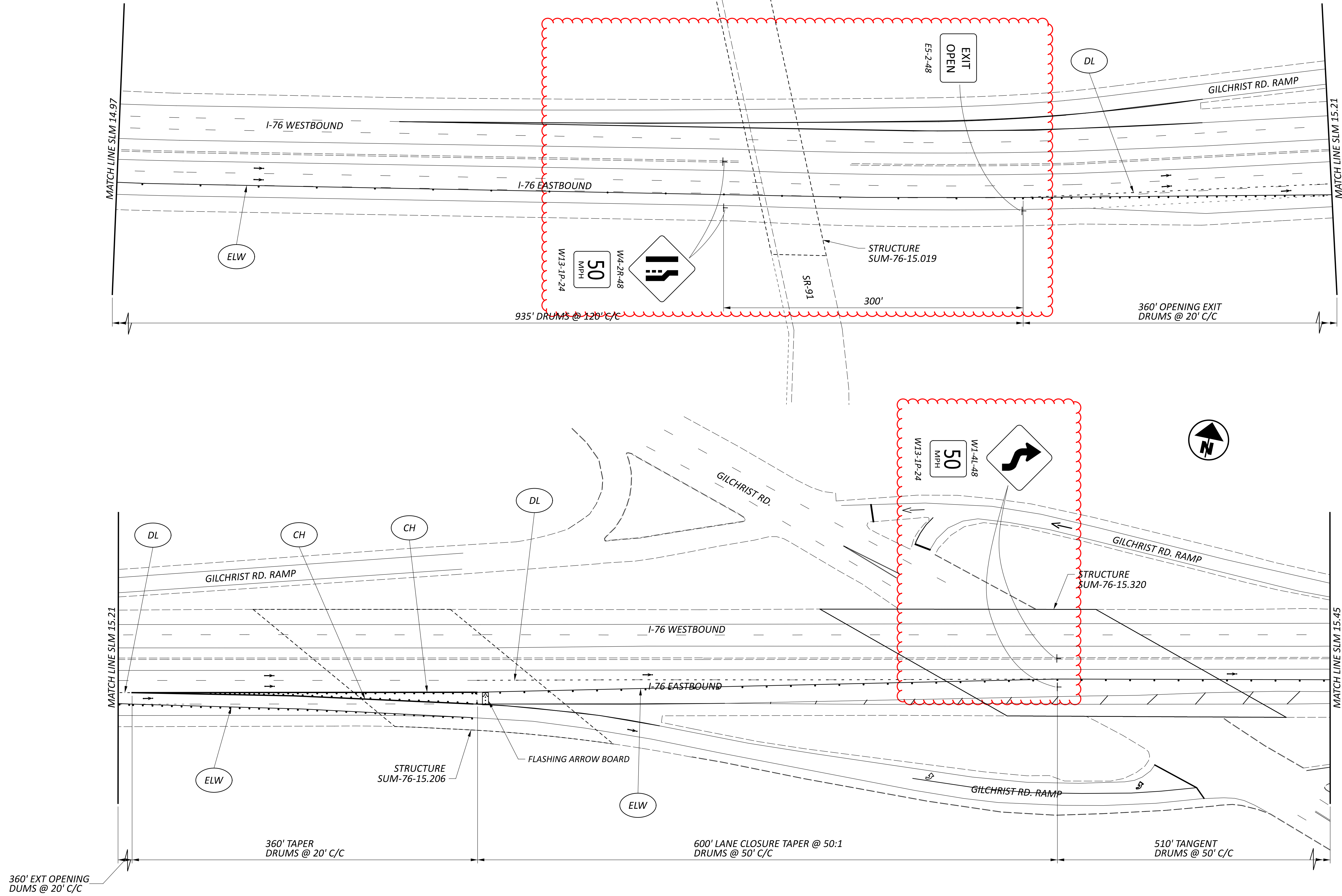


**MAINTENANCE OF TRAFFIC PLAN
I-76 EASTBOUND AT GILCHRIST RD**

DESIGN AGENCY



DESIGNER	SJD
REVIEWER	CLG
PROJECT ID	04-11-24
	116820
SHEET	TOTAL
P.8	33



MAINTENANCE OF TRAFFIC PLAN
 I-76 EASTBOUND AT GILCHRIST RD

DESIGN AGENCY



DESIGNER
 SJD

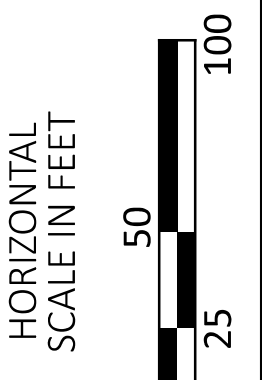
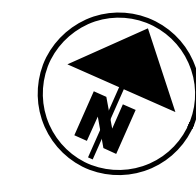
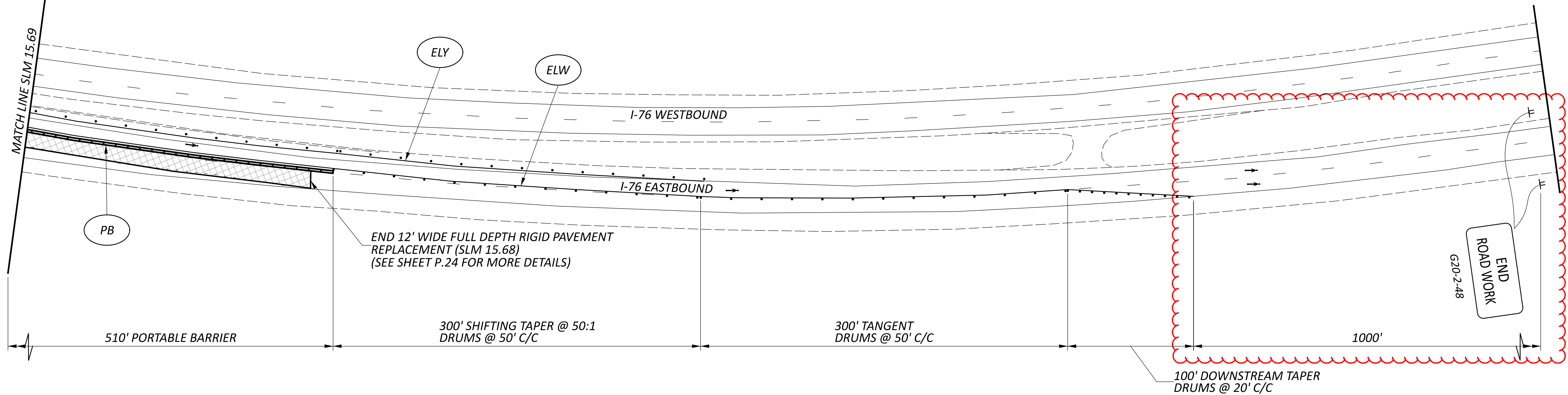
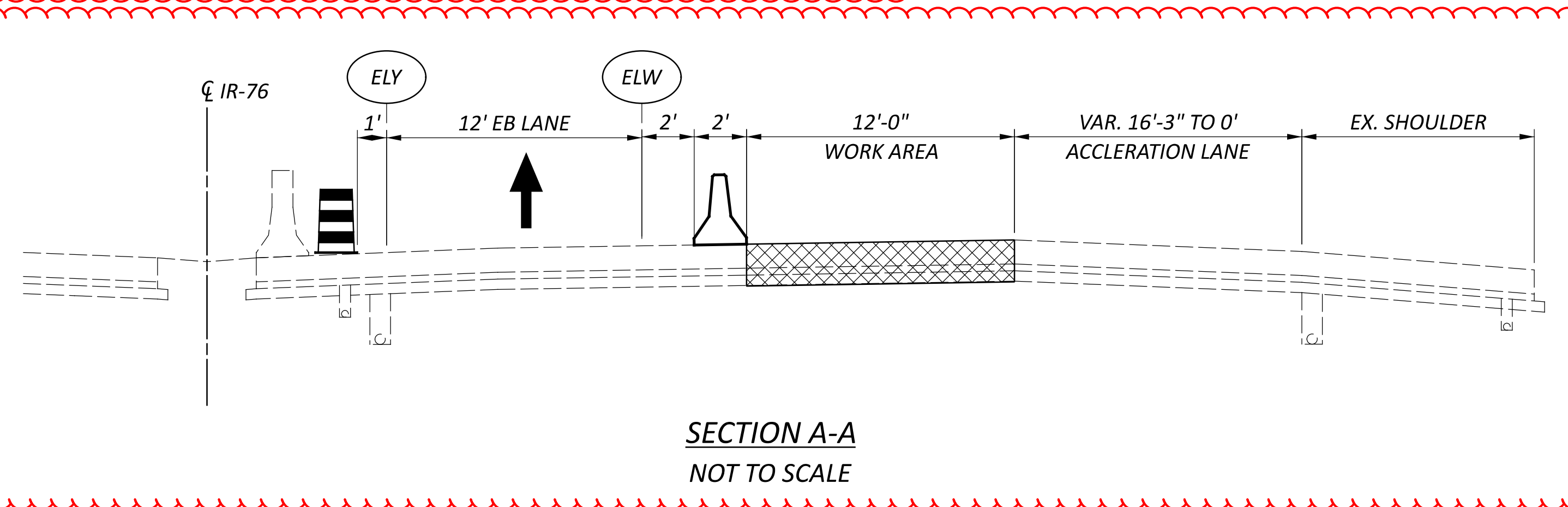
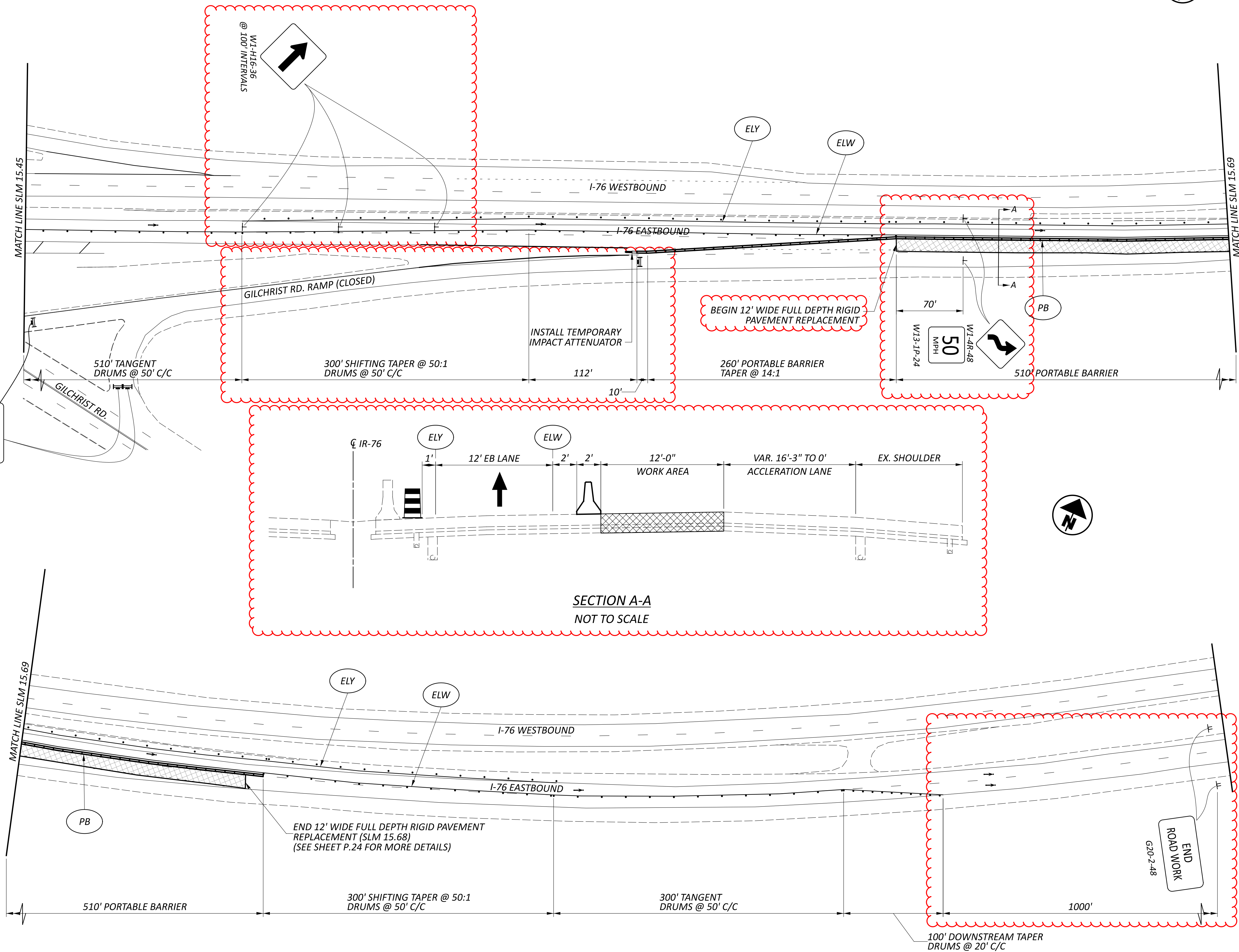
REVIEWER
 CLG 04-11-24

PROJECT ID
 116820

SHEET TOTAL
 P.9 33

ROAD CLOSED

R11-2-48



MAINTENANCE OF TRAFFIC PLAN
I-76 EASTBOUND AT GILCHRIST RD

DESIGN AGENCY



DESIGNER
SJL

REVIEWER
CLG 04-11-24

PROJECT ID
116820

SHEET TOTAL
P.10 33

SHEET NUM.											PART.		ITEM	ITEM EXT	GRAND TOTAL	UNIT	DESCRIPTION	SEE SHEET NO.
P.2	P.3	P.4	P.5	P.6	P.11	P.14	P.24	P.27	P.28		01/IMS/05	02/IMS/47						
			300								300		614	11110	300	HOUR	MAINTENANCE OF TRAFFIC LAW ENFORCEMENT OFFICER WITH PATROL CAR FOR ASSISTANCE	
					100						100		614	11630	100	FT	INCREASED BARRIER DELINEATION	
					1						1		614	12380	1	EACH	WORK ZONE IMPACT ATTENUATOR, 24" WIDE HAZARDS, (UNIDIRECTIONAL)	
											LS		614	12420	LS		DETOUR SIGNING	
		8									8		614	12460	8	EACH	WORK ZONE MARKING SIGN	
					17						17		614	13350	17	EACH	OBJECT MARKER, ONE WAY	
			24								24		614	18601	24	SNMT	PORTABLE CHANGEABLE MESSAGE SIGN, AS PER PLAN	P.4
		3									3		614	20560	3	MILE	WORK ZONE LANE LINE, CLASS III, 6", 642 PAINT	
		3			2						5		614	22360	5	MILE	WORK ZONE EDGE LINE, CLASS III, 6", 642 PAINT	
		100			720						820		614	23690	820	FT	WORK ZONE CHANNELIZING LINE, CLASS III, 12", 642 PAINT	
					1,960						1,960		614	24612	1,960	FT	WORK ZONE DOTTED LINE, CLASS III, 6", 642 PAINT	
											LS		614	11000	LS		INCIDENTALS MAINTAINING TRAFFIC	
											6		619	16010	6	MNTH	FIELD OFFICE, TYPE B	
											LS		623	10000	LS		CONSTRUCTION LAYOUT STAKES AND SURVEYING	
											LS		624	10000	LS		MOBILIZATION	

GENERAL SUMMARY

DESIGN AGENCY



DESIGNER
SJ

REVIEWER
CLG 04-11-24

PROJECT ID
116820

SHEET TOTAL
P.13 33