



National Engineering & Architectural Services Inc.

National Engineering & Architectural Services, INC. (NEAS)  
 2800 Corporate Exchange Dr.  
 Suite 240  
 Columbus, Ohio 43231  
 Office: (614) 714-0299  
 Fax: (614) 714-0251

# LEVEL A TEST HOLE CERTIFICATION FORM

PROJECT NAME: SUM-008-1.75  
 PROJECT LOCATION (COUNTY, CITY, STATE): SUMMIT, AKRON, OHIO  
 TEST HOLE LOCATION (PAV., SIDEWALK, ETC): SOIL  
 PAVING CONDITION PRIOR TO WORK: N/A  
 B.M. #: \_\_\_\_\_  
 B.M. ELEV: \_\_\_\_\_  
 DESCRIPTION: \_\_\_\_\_  
 B.M. #: \_\_\_\_\_  
 B.M. ELEV: \_\_\_\_\_  
 DESCRIPTION: \_\_\_\_\_

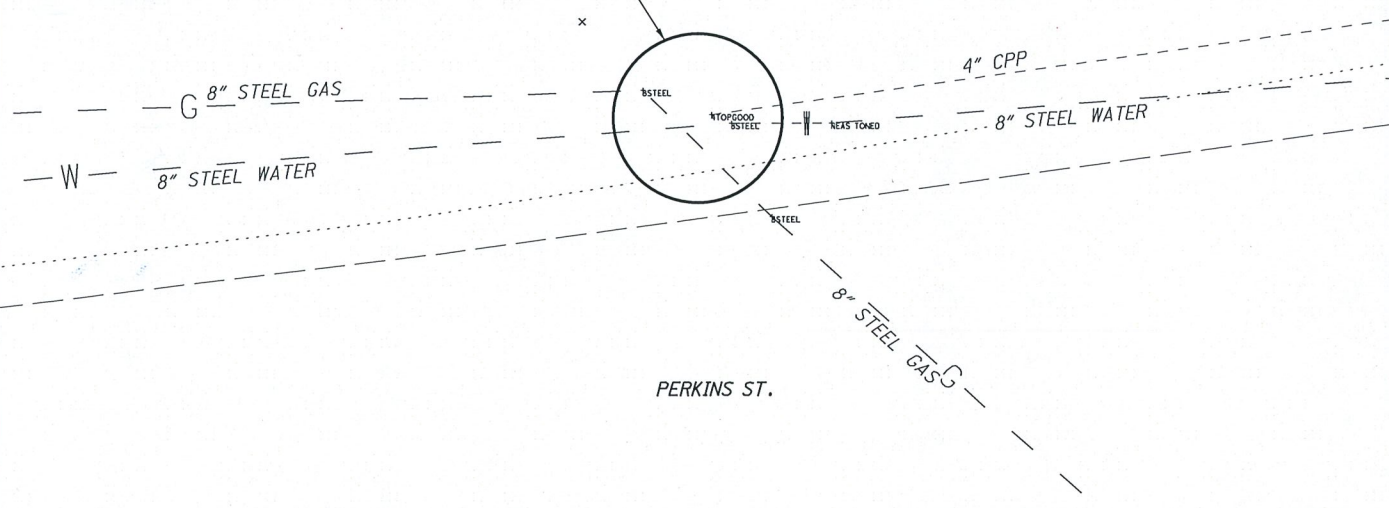
PROJECT #: 16-0187  
 TEST HOLE #: 001  
 UTILITY TO BE LOCATED: 8" GAS  
 DATE OF EXCAVATION: 11-16-2017  
 WEATHER CONDITIONS: 39° AND CLOUDY  
 FOREMAN/TRUCK: N. MILLER/A. CROOKS  
 CONTROL POINT: 105  
 NORTHING: 522301.2180  
 EASTING: 2244481.2430  
 ELEVATION: 1020.4800

RECORDED SIZE & TYPE: CONFIRMED  
 THERE WERE ADDITIONAL UTILITIES IN THE TEST HOLE  
 THE UTILITY WAS IN GOOD CONDITION  
 COLOR OF RIBBON INSTALLED IN TEST HOLE: YELLOW AND BLUE  
 PAVING THICKNESS AND TYPE: N/A  
 SOIL TYPE: ROCK AND DIRT  
 FIELD REMARKS: \_\_\_\_\_

EXISTING GRADE OF SOIL \_\_\_\_\_  
 GRADE ELEVATION: 1048.2650  
 SURVEYED ELEVATION TOP OF UTIL: 1046.18  
 SURVEYED ELEVATION BOT. OF UTIL (IF REQ.): \_\_\_\_\_  
 SURVEYED SIZE AND TYPE OF UTIL: 8" STEEL GAS  
 DIRECTION OF UTILITY LINE: EAST/WEST  
 UTILITY REMARKS: THREE UTILITIES EXPOSED AT SITE  
 PHOTO IMAGE NUMBERS: 460-461



LEVEL A TEST HOLE #1  
 TOP OF GROUND = 1048.26  
 TOP OF 4" CPP = 1046.61  
 TOP OF 8" GAS = 1046.18  
 TOP OF 8" WATER = 1044.82

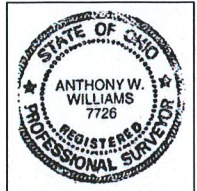


UTILITY LEGEND

GAS — G —	TEST HOLE	ELEC. P.B.
WATER — W —	FIRE HYDRANT	POWER POLE
TELEPHONE — T —	WATER VALVE	POWER/LIGHT
ELECTRIC — E —	GAS MARKER	LIGHT POLE
SANITARY SEWER — SAN —	GAS VALVE	SAN M.H.
STORM SEWER — FO —	F.O. MARKER	TRAFFIC P.B.
FIBER OPTIC — CTV —	UNKNOWN P.B.	GROUND SHOT
CABLE TV — TR —		
TRAFFIC — TR —		

I, Anthony Williams, do hereby certify that the positioning of the utility facilities provided utilizing the Quality Levels was performed in accordance with ODOT's SULS specifications.

*Anthony Williams*  
 Anthony Williams, P.S.  
 DATE 2/14/2018





National Engineering & Architectural Services Inc.

National Engineering & Architectural Services, INC. (NEAS)  
 2800 Corporate Exchange Dr.  
 Suite 240  
 Columbus, Ohio 43231  
 Office: (614) 714-0299  
 Fax: (614) 714-0251

# LEVEL A TEST HOLE CERTIFICATION FORM

PROJECT NAME: SUM-008-1.75  
 PROJECT LOCATION (COUNTY, CITY, STATE): SUMMIT, AKRON, OHIO  
 TEST HOLE LOCATION (PAV., SIDEWALK, ETC): PERKINS ST  
 PAVING CONDITION PRIOR TO WORK: N/A  
 B.M. #: \_\_\_\_\_  
 B.M. ELEV: \_\_\_\_\_  
 DESCRIPTION: \_\_\_\_\_  
 B.M. #: \_\_\_\_\_  
 B.M. ELEV: \_\_\_\_\_  
 DESCRIPTION: \_\_\_\_\_

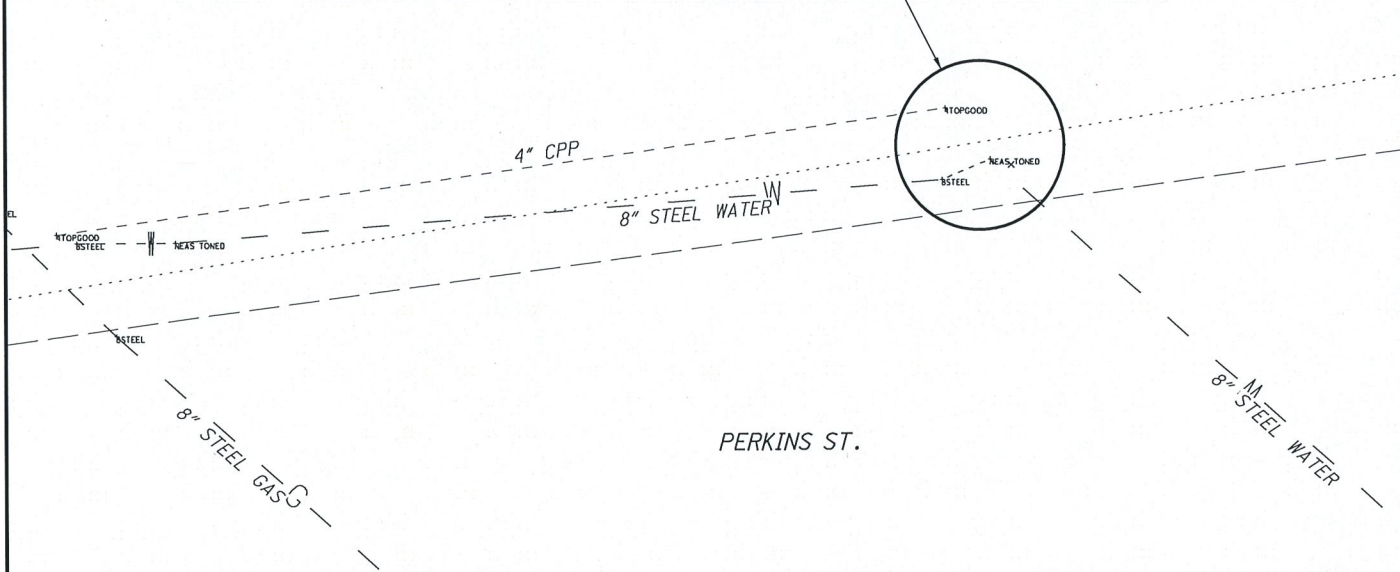
PROJECT #: 16-0187  
 TEST HOLE #: 002  
 UTILITY TO BE LOCATED: 8" WATER  
 DATE OF EXCAVATION: 11-16-2017  
 WEATHER CONDITIONS: 39° AND CLOUDY  
 FOREMAN/TRUCK: N. MILLER/A. CROOKS  
 CONTROL POINT: 105  
 NORTHING: 522301.2180  
 EASTING: 2244481.2430  
 ELEVATION: 1020.4800

RECORDED SIZE & TYPE: CONFIRMED  
 THERE WERE ADDITIONAL UTILITIES IN THE TEST HOLE  
 THE UTILITY WAS IN GOOD CONDITION  
 COLOR OF RIBBON INSTALLED IN TEST HOLE: BLUE  
 PAVING THICKNESS AND TYPE: N/A  
 SOIL TYPE: ROCK AND DIRT  
 FIELD REMARKS: \_\_\_\_\_

EXISTING GRADE OF SOIL \_\_\_\_\_  
 GRADE ELEVATION: 1048.51  
 SURVEYED ELEVATION TOP OF UTIL: 1045.32  
 SURVEYED ELEVATION BOT. OF UTIL (IF REQ.): \_\_\_\_\_  
 SURVEYED SIZE AND TYPE OF UTIL: 8" STEEL WATER  
 DIRECTION OF UTILITY LINE: EAST/WEST  
 UTILITY REMARKS: TWO UTILITIES EXPOSED AT SITE  
 PHOTO IMAGE NUMBERS: 463-464



LEVEL A TEST HOLE #2  
 TOP OF GROUND = 1048.51  
 TOP OF 4" CPP = 1046.82  
 TOP OF 8" W = 1045.32

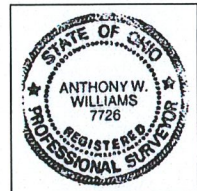


### UTILITY LEGEND

GAS — G —	○ TEST HOLE	⊠ ELEC. P.B.
WATER — W —	⊠ FIRE HYDRANT	⊕ POWER POLE
TELEPHONE — T —	⊠ WATER VALVE	⊕ POWER/LIGHT
ELECTRIC — E —	⊠ GAS MARKER	⊕ LIGHT POLE
SANITARY SEWER — SAN —	⊠ GAS VALVE	⊠ SAN M.H.
STORM SEWER — —	○ F.O. MARKER	⊠ TRAFFIC P.B.
FIBER OPTIC — FO —	⊠ UNKNOWN P.B.	× GROUND SHOT
CABLE TV — CTV —		
TRAFFIC — TR —		

I, Anthony Williams, do hereby certify that the positioning of the utility facilities provided utilizing the Quality Levels was performed in accordance with ODOT's SULS specifications.

*Anthony Williams*  
 Anthony Williams, P.S.  
 DATE 2/14/2018





National Engineering & Architectural Services Inc.

National Engineering & Architectural Services, INC. (NEAS)  
 2800 Corporate Exchange Dr.  
 Suite 240  
 Columbus, Ohio 43231  
 Office: (614) 714-0299  
 Fax: (614) 714-0251

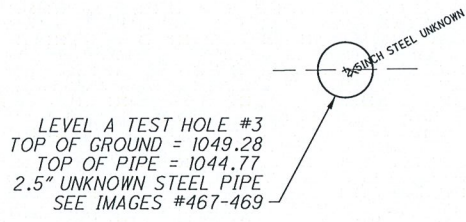
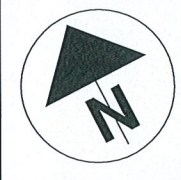
# LEVEL A TEST HOLE CERTIFICATION FORM

PROJECT NAME: SUM-008-1.75  
 PROJECT LOCATION (COUNTY, CITY, STATE): SUMMIT, AKRON, OHIO  
 TEST HOLE LOCATION (PAV., SIDEWALK, ETC): ARCH ST.  
 PAVING CONDITION PRIOR TO WORK: GOOD  
 B.M. #: \_\_\_\_\_  
 B.M. ELEV: \_\_\_\_\_  
 DESCRIPTION: \_\_\_\_\_  
 B.M. #: \_\_\_\_\_  
 B.M. ELEV: \_\_\_\_\_  
 DESCRIPTION: \_\_\_\_\_

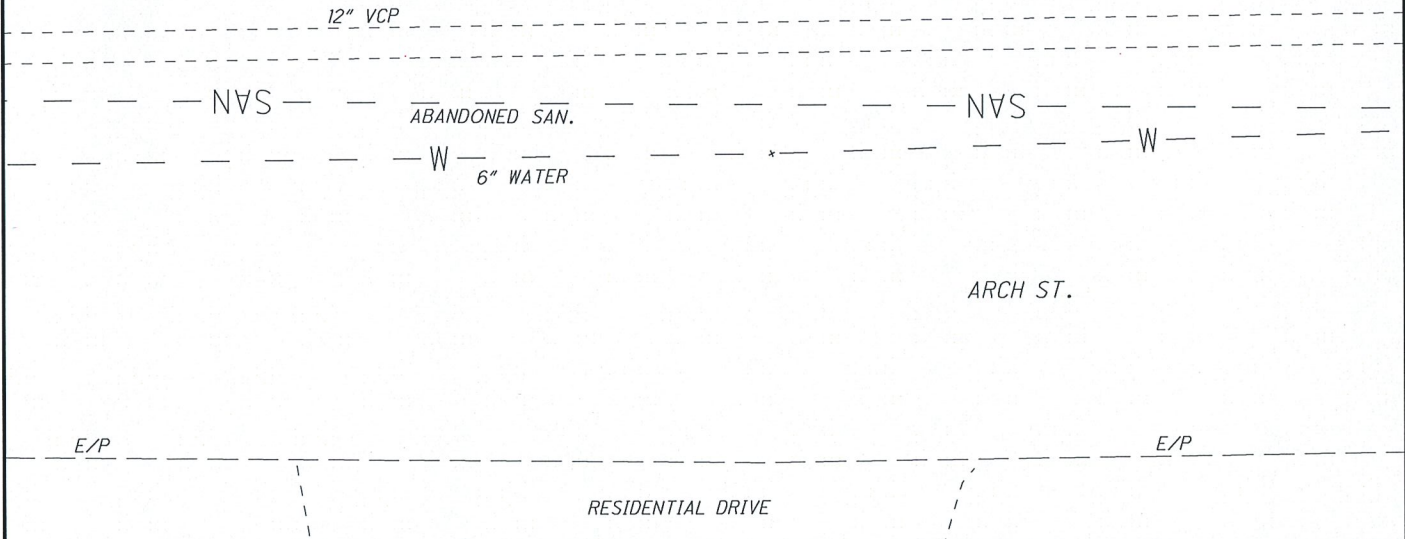
PROJECT #: 16-0187  
 TEST HOLE #: 003  
 UTILITY TO BE LOCATED: UNKNOWN UTILITY  
 DATE OF EXCAVATION: 11-16-2017  
 WEATHER CONDITIONS: 40° AND CLOUDY  
 FOREMAN/TRUCK: N. MILLER/A. CROOKS  
 CONTROL POINT: 105  
 NORTHING: 522301.2180  
 EASTING: 2244481.2430  
 ELEVATION: 1020.4800

RECORDED SIZE & TYPE: CONFIRMED  
 THERE WERE NOT ADDITIONAL UTILITIES IN THE TEST HOLE  
 THE UTILITY WAS IN GOOD CONDITION  
 COLOR OF RIBBON INSTALLED IN TEST HOLE: NONE  
 PAVING THICKNESS AND TYPE: N/A  
 SOIL TYPE: ROCK AND SAND  
 FIELD REMARKS: FOUND 2.5" STEEL PIPE. COULD NOT DETERMINE THE TYPE OF UTILITY. SHOT AS UNKNOWN.

EXISTING GRADE OF BRICK  
 GRADE ELEVATION: 1049.28  
 SURVEYED ELEVATION TOP OF UTIL: 1044.77  
 SURVEYED ELEVATION BOT. OF UTIL (IF REQ.): \_\_\_\_\_  
 SURVEYED SIZE AND TYPE OF UTIL: 2.5" STEEL  
 DIRECTION OF UTILITY LINE: NORTHEAST/SOUTHWEST  
 UTILITY REMARKS: TYPE UNKNOWN  
 PHOTO IMAGE NUMBERS: 467-469



LEVEL A TEST HOLE #3  
 TOP OF GROUND = 1049.28  
 TOP OF PIPE = 1044.77  
 2.5" UNKNOWN STEEL PIPE  
 SEE IMAGES #467-469

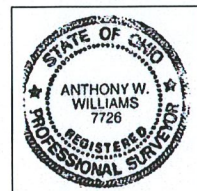


**UTILITY LEGEND**

GAS — G —	⊕ TEST HOLE	⊠ ELEC. P.B.
WATER — W —	⊙ FIRE HYDRANT	⊕ POWER POLE
TELEPHONE — T —	⊕ WATER VALVE	⊕ POWER/LIGHT
ELECTRIC — E —	⊕ GAS MARKER	⊕ LIGHT POLE
SANITARY SEWER — SAN —	⊕ GAS VALVE	⊙ SAN M.H.
STORM SEWER — SS —	⊙ F.O. MARKER	⊠ TRAFFIC P.B.
FIBER OPTIC — FO —	⊠ UNKNOWN P.B.	× GROUND SHOT
CABLE TV — CTV —		
TRAFFIC — TR —		

I, Anthony Williams, do hereby certify that the positioning of the utility facilities provided utilizing the Quality Levels was performed in accordance with ODOT's SULS specifications.

*Anthony Williams*  
 Anthony Williams, P.S.  
 DATE 2/14/2018





National Engineering & Architectural Services Inc.

National Engineering & Architectural Services, INC. (NEAS)  
 2800 Corporate Exchange Dr.  
 Suite 240  
 Columbus, Ohio 43231  
 Office: (614) 714-0299  
 Fax: (614) 714-0251

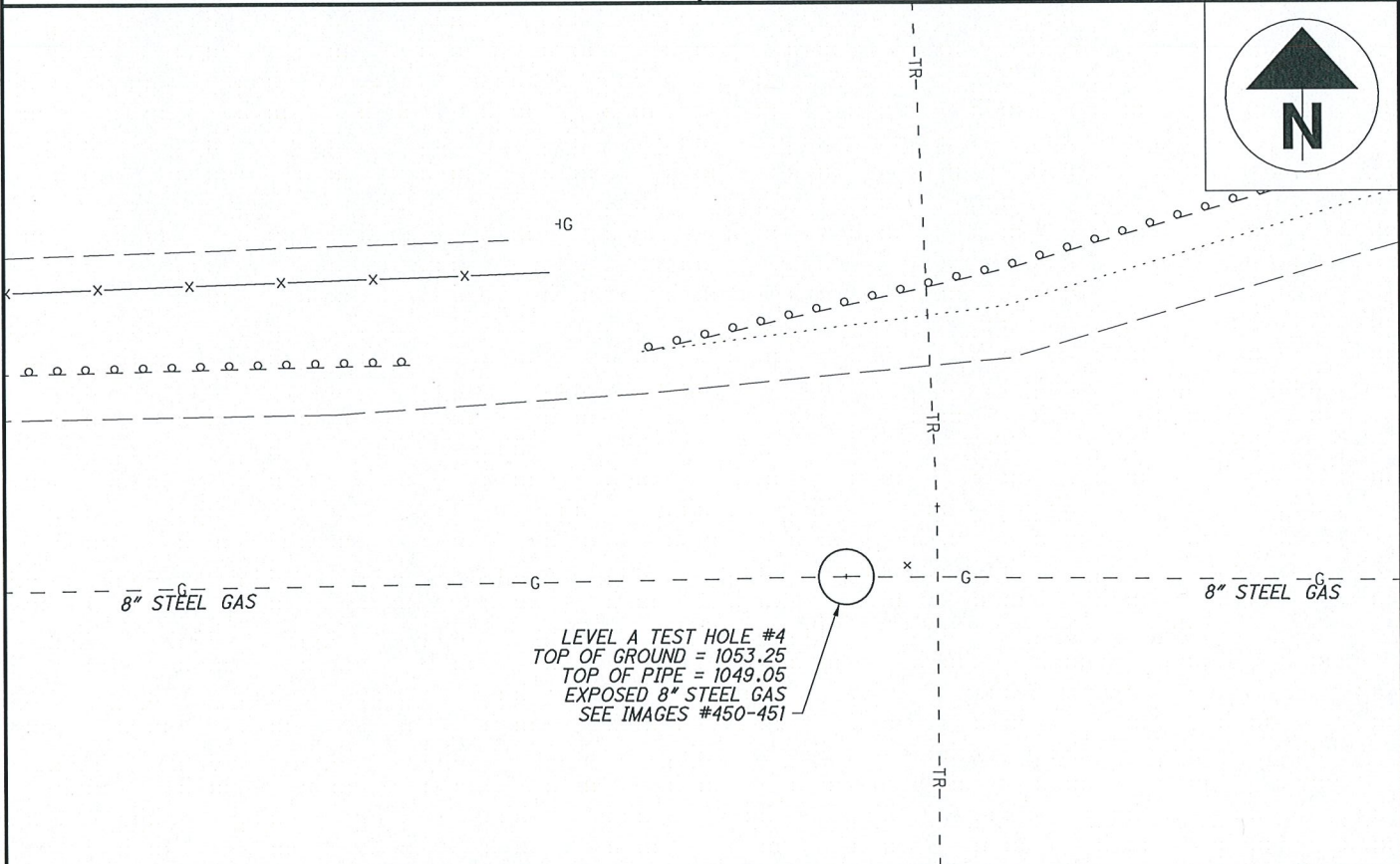
# LEVEL A TEST HOLE CERTIFICATION FORM

PROJECT NAME: SUM-008-1.75  
 PROJECT LOCATION (COUNTY, CITY, STATE): SUMMIT, AKRON, OHIO  
 TEST HOLE LOCATION (PAV., SIDEWALK, ETC): PERKINS ST.  
 PAVING CONDITION PRIOR TO WORK: GOOD  
 B.M. #: \_\_\_\_\_  
 B.M. ELEV: \_\_\_\_\_  
 DESCRIPTION: \_\_\_\_\_  
 B.M. #: \_\_\_\_\_  
 B.M. ELEV: \_\_\_\_\_  
 DESCRIPTION: \_\_\_\_\_

PROJECT #: 16-0187  
 TEST HOLE #: 004  
 UTILITY TO BE LOCATED: 8" GAS  
 DATE OF EXCAVATION: 11-15-2017  
 WEATHER CONDITIONS: 42°  
 FOREMAN/TRUCK: N. MILLER/A. CROOKS  
 CONTROL POINT: 106  
 NORTHING: 522871.9760  
 EASTING: 2244221.7250  
 ELEVATION: 1035.6100

RECORDED SIZE & TYPE: CONFIRMED  
 THERE WERE NOT ADDITIONAL UTILITIES IN THE TEST HOLE  
 THE UTILITY WAS IN GOOD CONDITION  
 COLOR OF RIBBON INSTALLED IN TEST HOLE: YELLOW  
 PAVING THICKNESS AND TYPE: 13" ASPHALT, 8" GRAVEL  
 SOIL TYPE: ROCK AND SAND  
 FIELD REMARKS: \_\_\_\_\_

EXISTING GRADE OF PAVEMENT \_\_\_\_\_  
 GRADE ELEVATION: 1053.25  
 SURVEYED ELEVATION TOP OF UTIL: 1049.05  
 SURVEYED ELEVATION BOT. OF UTIL (IF REQ.): \_\_\_\_\_  
 SURVEYED SIZE AND TYPE OF UTIL: 8" STEEL GAS  
 DIRECTION OF UTILITY LINE: EAST/WEST  
 UTILITY REMARKS: \_\_\_\_\_  
 PHOTO IMAGE NUMBERS: 450-451

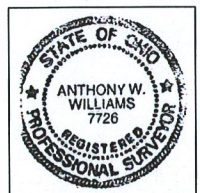


### UTILITY LEGEND

GAS ——— G ———	○ TEST HOLE	⊞ ELEC. P.B.
WATER ——— W ———	⊞ FIRE HYDRANT	⊞ POWER POLE
TELEPHONE ——— T ———	⊞ WATER VALVE	⊞ POWER/LIGHT
ELECTRIC ——— E ———	⊞ GAS MARKER	⊞ LIGHT POLE
SANITARY SEWER ——— SAN ———	⊞ GAS VALVE	⊞ SAN M.H.
STORM SEWER ——— S ———	⊞ F.O. MARKER	⊞ TRAFFIC P.B.
FIBER OPTIC ——— FO ———	⊞ UNKNOWN P.B.	× GROUND SHOT
CABLE TV ——— CTV ———		
TRAFFIC ——— TR ———		

I, Anthony Williams, do hereby certify that the positioning of the utility facilities provided utilizing the Quality Levels was performed in accordance with ODOT's SULS specifications.

*Anthony Williams*  
 Anthony Williams, P.S.  
 DATE 2/14/2018





National Engineering & Architectural Services Inc.

National Engineering & Architectural Services, INC. (NEAS)  
 2800 Corporate Exchange Dr.  
 Suite 240  
 Columbus, Ohio 43231  
 Office: (614) 714-0299  
 Fax: (614) 714-0251

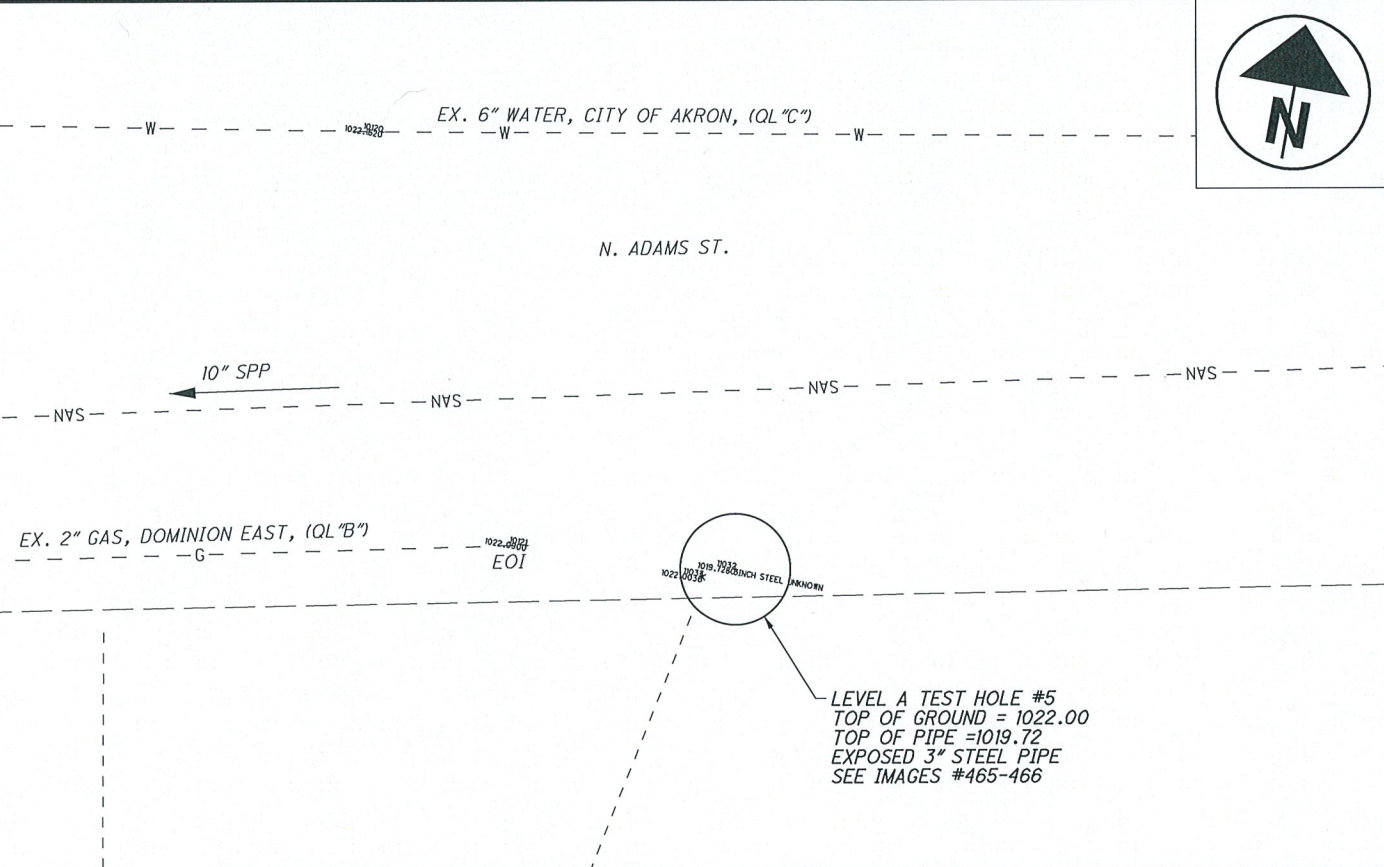
# LEVEL A TEST HOLE CERTIFICATION FORM

PROJECT NAME: SUM-008-1.75  
 PROJECT LOCATION (COUNTY, CITY, STATE): SUMMIT, AKRON, OHIO  
 TEST HOLE LOCATION (PAV., SIDEWALK, ETC): N. ADAMS ST.  
 PAVING CONDITION PRIOR TO WORK: N/A  
 B.M. #: \_\_\_\_\_  
 B.M. ELEV: \_\_\_\_\_  
 DESCRIPTION: \_\_\_\_\_  
 B.M. #: \_\_\_\_\_  
 B.M. ELEV: \_\_\_\_\_  
 DESCRIPTION: \_\_\_\_\_

PROJECT #: 16-0187  
 TEST HOLE #: 005  
 UTILITY TO BE LOCATED: UNKNOWN  
 DATE OF EXCAVATION: 11-16-2017  
 WEATHER CONDITIONS: 39° AND CLOUDY  
 FOREMAN/TRUCK: N. MILLER/A. CROOKS  
 CONTROL POINT: 105  
 NORTHING: 522301.2180  
 EASTING: 2244481.2430  
 ELEVATION: 1020.4800

RECORDED SIZE & TYPE: CONFIRMED  
 THERE WERE NOT ADDITIONAL UTILITIES IN THE TEST HOLE  
 THE UTILITY WAS NOT IN GOOD CONDITION  
 COLOR OF RIBBON INSTALLED IN TEST HOLE: \_\_\_\_\_  
 PAVING THICKNESS AND TYPE: N/A  
 SOIL TYPE: ROCK AND DIRT  
 FIELD REMARKS: FOUND 3" STEEL PIPE. COULD NOT DETERMINE UTILITY EXPOSED. NO RIBBON INSTALLED.

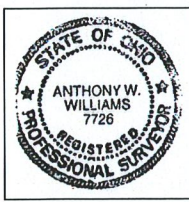
EXISTING GRADE OF GROUND \_\_\_\_\_  
 GRADE ELEVATION: 1022.00  
 SURVEYED ELEVATION TOP OF UTIL: 1019.72  
 SURVEYED ELEVATION BOT. OF UTIL (IF REQ.): \_\_\_\_\_  
 SURVEYED SIZE AND TYPE OF UTIL: 3" STEEL UNKNOWN  
 DIRECTION OF UTILITY LINE: EAST/WEST  
 UTILITY REMARKS: \_\_\_\_\_  
 PHOTO IMAGE NUMBERS: 465-466



UTILITY LEGEND			
GAS	— G —	⊕ TEST HOLE	⊠ ELEC. P.B.
WATER	— W —	⊕ FIRE HYDRANT	⊕ POWER POLE
TELEPHONE	— T —	⊕ WATER VALVE	⊕ POWER/LIGHT
ELECTRIC	— E —	⊕ GAS MARKER	⊕ LIGHT POLE
SANITARY SEWER	— SAN —	⊕ GAS VALVE	⊕ SAN M.H.
STORM SEWER	— SS —	⊕ F.O. MARKER	⊠ TRAFFIC P.B.
FIBER OPTIC	— FO —	⊕ UNKNOWN P.B.	× GROUND SHOT
CABLE TV	— CTV —		
TRAFFIC	— TR —		

I, Anthony Williams, do hereby certify that the positioning of the utility facilities provided utilizing the Quality Levels was performed in accordance with ODOT's SULS specifications.

*Anthony Williams*  
 Anthony Williams, P.S.  
 DATE 2/14/2018





National Engineering & Architectural Services Inc.

National Engineering & Architectural Services, INC. (NEAS)  
 2800 Corporate Exchange Dr.  
 Suite 240  
 Columbus, Ohio 43231  
 Office: (614) 714-0299  
 Fax: (614) 714-0251

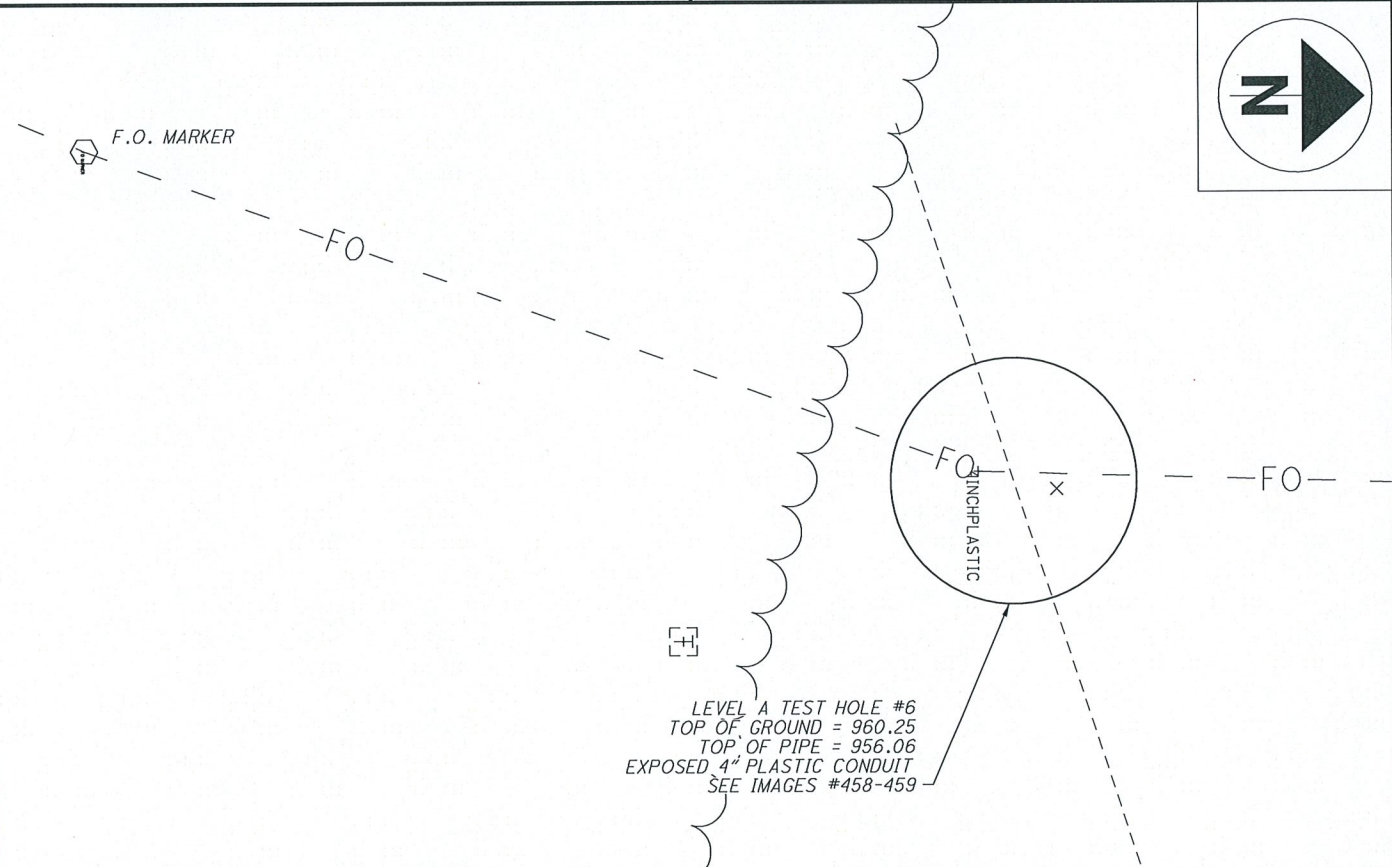
# LEVEL A TEST HOLE CERTIFICATION FORM

PROJECT NAME: SUM-008-1.75  
 PROJECT LOCATION (COUNTY, CITY, STATE): SUMMIT, AKRON, OHIO  
 TEST HOLE LOCATION (PAV., SIDEWALK, ETC): SR 8 SOUTHBOUND  
 PAVING CONDITION PRIOR TO WORK: N/A  
 B.M. #: \_\_\_\_\_  
 B.M. ELEV: \_\_\_\_\_  
 DESCRIPTION: \_\_\_\_\_  
 B.M. #: \_\_\_\_\_  
 B.M. ELEV: \_\_\_\_\_  
 DESCRIPTION: \_\_\_\_\_

PROJECT #: 16-0187  
 TEST HOLE #: 006  
 UTILITY TO BE LOCATED: FIBER OPTIC  
 DATE OF EXCAVATION: 11-16-2017  
 WEATHER CONDITIONS: 40° AND CLOUDY  
 FOREMAN/TRUCK: N. MILLER / A. CROOKS  
 CONTROL POINT: 105  
 NORTHING: 522301.2180  
 EASTING: 2244481.2430  
 ELEVATION: 1020.4800

RECORDED SIZE & TYPE: CONFIRMED  
 THERE WERE NOT ADDITIONAL UTILITIES IN THE TEST HOLE  
 THE UTILITY WAS IN GOOD CONDITION  
 COLOR OF RIBBON INSTALLED IN TEST HOLE: ORANGE  
 PAVING THICKNESS AND TYPE: N/A  
 SOIL TYPE: ROCK AND DIRT  
 FIELD REMARKS: \_\_\_\_\_

EXISTING GRADE OF GROUND  
 GRADE ELEVATION: 960.25  
 SURVEYED ELEVATION TOP OF UTIL: 956.06  
 SURVEYED ELEVATION BOT. OF UTIL (IF REQ.): \_\_\_\_\_  
 SURVEYED SIZE AND TYPE OF UTIL: 4" PVC FO  
 DIRECTION OF UTILITY LINE: NORTH/SOUTH  
 UTILITY REMARKS: \_\_\_\_\_  
 PHOTO IMAGE NUMBERS: 458-459

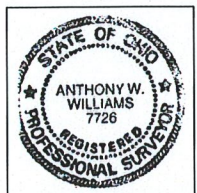


### UTILITY LEGEND

GAS _____ G _____	⊕ TEST HOLE	⊕ ELEC. P.B.
WATER _____ W _____	⊕ FIRE HYDRANT	⊕ POWER POLE
TELEPHONE _____ T _____	⊕ WATER VALVE	⊕ POWER/LIGHT
ELECTRIC _____ E _____	⊕ GAS MARKER	⊕ LIGHT POLE
SANITARY SEWER _____ SAN _____	⊕ GAS VALVE	⊕ SAN M.H.
STORM SEWER _____ STW _____	⊕ F.O. MARKER	⊕ TRAFFIC P.B.
FIBER OPTIC _____ FO _____	⊕ UNKNOWN P.B.	× GROUND SHOT
CABLE TV _____ CTV _____		
TRAFFIC _____ TR _____		

I, Anthony Williams, do hereby certify that the positioning of the utility facilities provided utilizing the Quality Levels was performed in accordance with ODOT's SULS specifications.

*Anthony Williams*  
 Anthony Williams, P.S.  
 DATE 2/14/2018





National Engineering & Architectural Services Inc.

National Engineering & Architectural Services, INC. (NEAS)  
 2800 Corporate Exchange Dr.  
 Suite 240  
 Columbus, Ohio 43231  
 Office: (614) 714-0299  
 Fax: (614) 714-0251

# LEVEL A TEST HOLE CERTIFICATION FORM

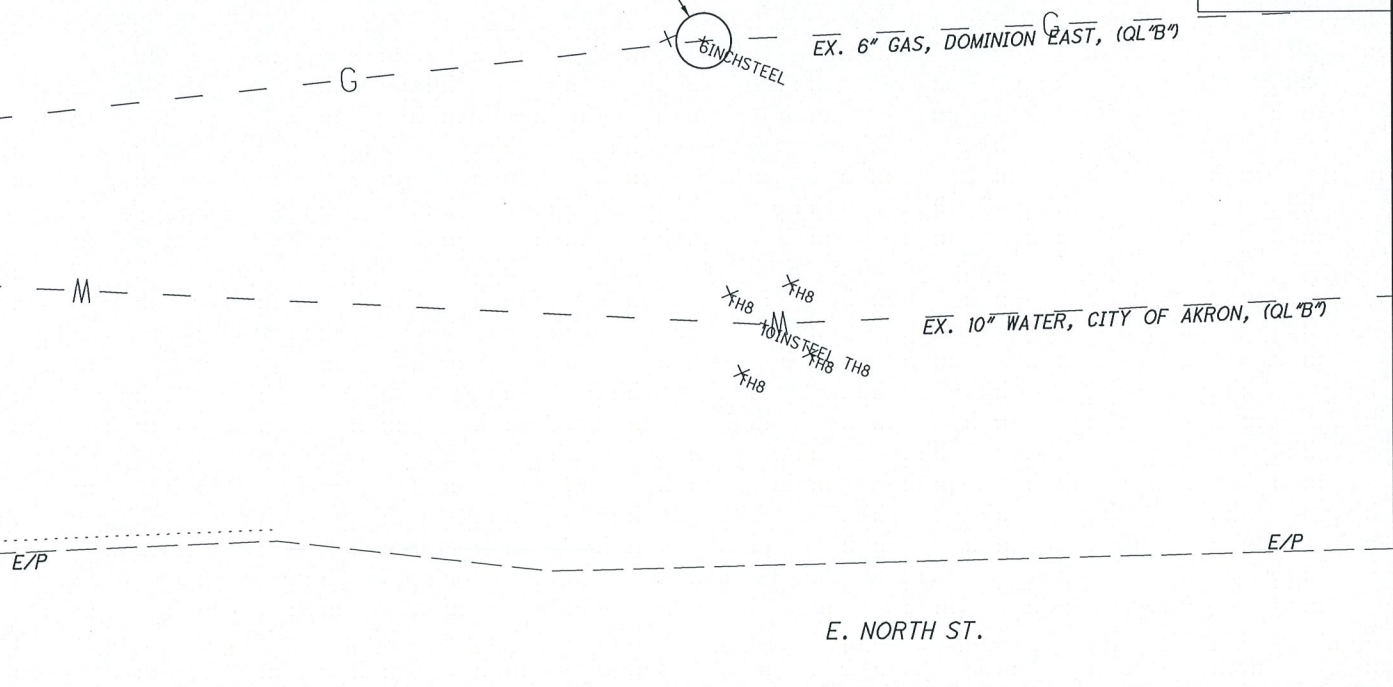
PROJECT NAME: SUM-008-1.75  
 PROJECT LOCATION (COUNTY, CITY, STATE): SUMMIT, AKRON, OHIO  
 TEST HOLE LOCATION (PAV., SIDEWALK, ETC): E. NORTH ST.  
 PAVING CONDITION PRIOR TO WORK: N/A  
 B.M. #: \_\_\_\_\_  
 B.M. ELEV: \_\_\_\_\_  
 DESCRIPTION: \_\_\_\_\_  
 B.M. #: \_\_\_\_\_  
 B.M. ELEV: \_\_\_\_\_  
 DESCRIPTION: \_\_\_\_\_

PROJECT #: 16-0187  
 TEST HOLE #: 007  
 UTILITY TO BE LOCATED: 6" GAS  
 DATE OF EXCAVATION: 11-15-2017  
 WEATHER CONDITIONS: 42°  
 FOREMAN/TRUCK: N. MILLER/A. CROOKS  
 CONTROL POINT: 106  
 NORTHING: 522871.9760  
 EASTING: 2244221.7250  
 ELEVATION: 1035.6100

RECORDED SIZE & TYPE: CONFIRMED  
 THERE WERE ADDITIONAL UTILITIES IN THE TEST HOLE  
 THE UTILITY WAS NOT IN GOOD CONDITION  
 COLOR OF RIBBON INSTALLED IN TEST HOLE: YELLOW  
 PAVING THICKNESS AND TYPE: N/A  
 SOIL TYPE: DIRT AND ROCK  
 FIELD REMARKS: \_\_\_\_\_

EXISTING GRADE OF GROUND  
 GRADE ELEVATION: 874.03  
 SURVEYED ELEVATION TOP OF UTIL: 871.22  
 SURVEYED ELEVATION BOT. OF UTIL (IF REQ.): \_\_\_\_\_  
 SURVEYED SIZE AND TYPE OF UTIL: 6" STEEL GAS  
 DIRECTION OF UTILITY LINE: NORTHEAST/SOUTHWEST  
 UTILITY REMARKS: \_\_\_\_\_  
 PHOTO IMAGE NUMBERS: 452-453

LEVEL A TEST HOLE #7  
 TOP OF GROUND = 874.03  
 TOP OF PIPE = 871.22  
 EXPOSED 6" STEEL GAS  
 SEE IMAGES #452-453

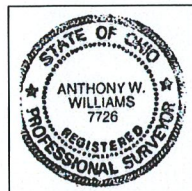


### UTILITY LEGEND

GAS	G	⊕	TEST HOLE	⊞	ELEC. P.B.
WATER	W	⊞	FIRE HYDRANT	⊕	POWER POLE
TELEPHONE	T	⊞	WATER VALVE	⊕	POWER/LIGHT
ELECTRIC	E	⊞	GAS MARKER	⊕	LIGHT POLE
SANITARY SEWER	SAN	⊞	GAS VALVE	⊕	SAN M.H.
STORM SEWER	SS	⊞	F.O. MARKER	⊞	TRAFFIC P.B.
FIBER OPTIC	FO	⊞	UNKNOWN P.B.	×	GROUND SHOT
CABLE TV	CTV				
TRAFFIC	TR				

I, Anthony Williams, do hereby certify that the positioning of the utility facilities provided utilizing the Quality Levels was performed in accordance with ODOT's SULS specifications.

*Anthony Williams*  
 Anthony Williams, P.S.  
 DATE 2/14/2018





National Engineering & Architectural Services Inc.

National Engineering & Architectural Services, INC. (NEAS)  
 2800 Corporate Exchange Dr.  
 Suite 240  
 Columbus, Ohio 43231  
 Office: (614) 714-0299  
 Fax: (614) 714-0251

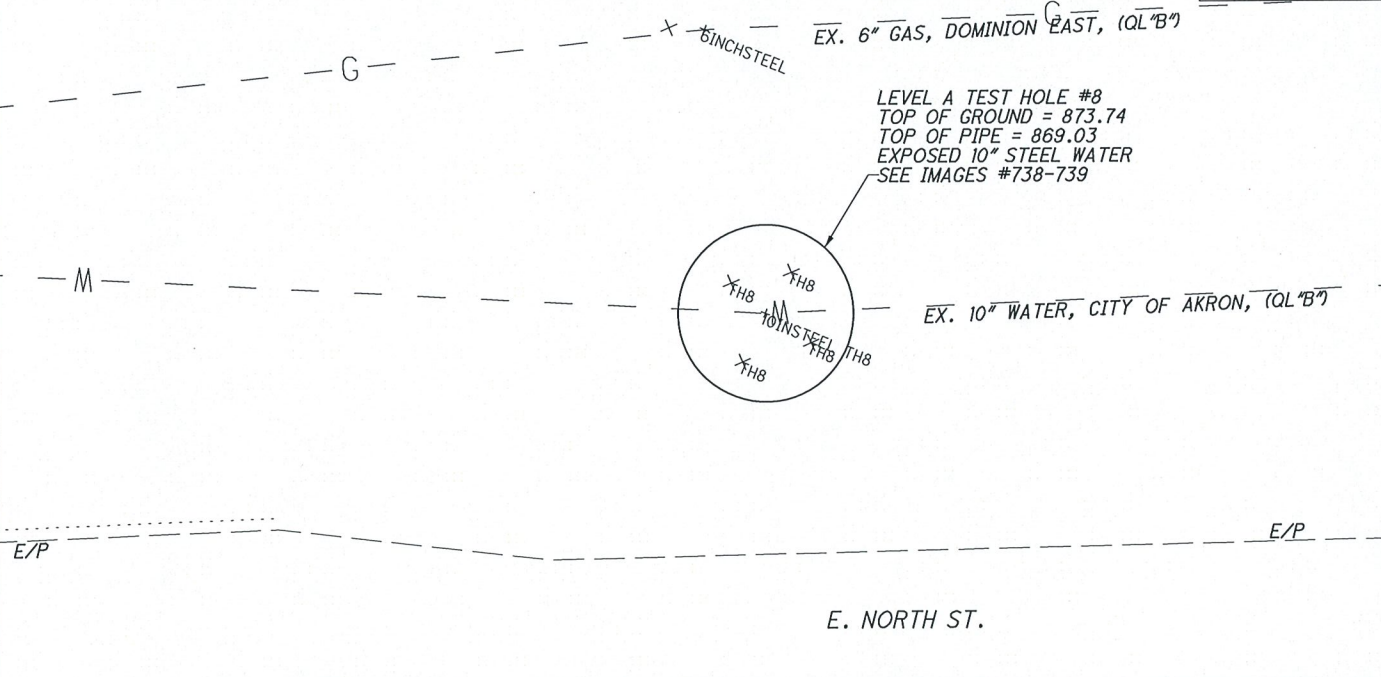
# LEVEL A TEST HOLE CERTIFICATION FORM

PROJECT NAME: SUM-008-1.75  
 PROJECT LOCATION (COUNTY, CITY, STATE): SUMMIT, AKRON, OHIO  
 TEST HOLE LOCATION (PAV., SIDEWALK, ETC): E. NORTH ST.  
 PAVING CONDITION PRIOR TO WORK: N/A  
 B.M. #: \_\_\_\_\_  
 B.M. ELEV: \_\_\_\_\_  
 DESCRIPTION: \_\_\_\_\_  
 B.M. #: \_\_\_\_\_  
 B.M. ELEV: \_\_\_\_\_  
 DESCRIPTION: \_\_\_\_\_

PROJECT #: 16-0187  
 TEST HOLE #: 008  
 UTILITY TO BE LOCATED: 10" WATER  
 DATE OF EXCAVATION: 11-14-2017  
 WEATHER CONDITIONS: 45° AND CLOUDY  
 FOREMAN/TRUCK: N. MILLER/A. CROOKS  
 CONTROL POINT: 104  
 NORTHING: 519926.0390  
 EASTING: 2244314.9330  
 ELEVATION: 876.2100

RECORDED SIZE & TYPE: CONFIRMED  
 THERE WERE ADDITIONAL UTILITIES IN THE TEST HOLE  
 THE UTILITY WAS IN GOOD CONDITION  
 COLOR OF RIBBON INSTALLED IN TEST HOLE: BLUE  
 PAVING THICKNESS AND TYPE: N/A  
 SOIL TYPE: DIRT AND ROCK  
 FIELD REMARKS: \_\_\_\_\_

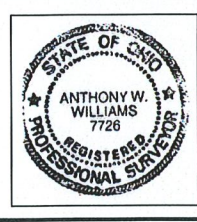
EXISTING GRADE OF GROUND \_\_\_\_\_  
 GRADE ELEVATION: 874.74  
 SURVEYED ELEVATION TOP OF UTIL: 869.03  
 SURVEYED ELEVATION BOT. OF UTIL (IF REQ.): \_\_\_\_\_  
 SURVEYED SIZE AND TYPE OF UTIL: 10" STEEL WATER  
 DIRECTION OF UTILITY LINE: NORTHEAST/SOUTHWEST  
 UTILITY REMARKS: \_\_\_\_\_  
 PHOTO IMAGE NUMBERS: 738-739



UTILITY LEGEND			
GAS _____ G _____	⊕ TEST HOLE	⊠ ELEC. P.B.	
WATER _____ W _____	⊙ FIRE HYDRANT	⊕ POWER POLE	
TELEPHONE _____ T _____	⊕ WATER VALVE	⊕ POWER/LIGHT	
ELECTRIC _____ E _____	⊕ GAS MARKER	⊕ LIGHT POLE	
SANITARY SEWER _____ SAN _____	⊕ GAS VALVE	⊙ SAN M.H.	
STORM SEWER _____ S _____	⊙ F.O. MARKER	⊠ TRAFFIC P.B.	
FIBER OPTIC _____ FO _____	⊠ UNKNOWN P.B.	× GROUND SHOT	
CABLE TV _____ CTV _____			
TRAFFIC _____ TR _____			

I, Anthony Williams, do hereby certify that the positioning of the utility facilities provided utilizing the Quality Levels was performed in accordance with ODOT's SULS specifications.

*Anthony Williams*  
 Anthony Williams, P.S.  
 DATE 2/14/2018







National Engineering & Architectural Services Inc.

National Engineering & Architectural Services, INC. (NEAS)  
 2800 Corporate Exchange Dr.  
 Suite 240  
 Columbus, Ohio 43231  
 Office: (614) 714-0299  
 Fax: (614) 714-0251

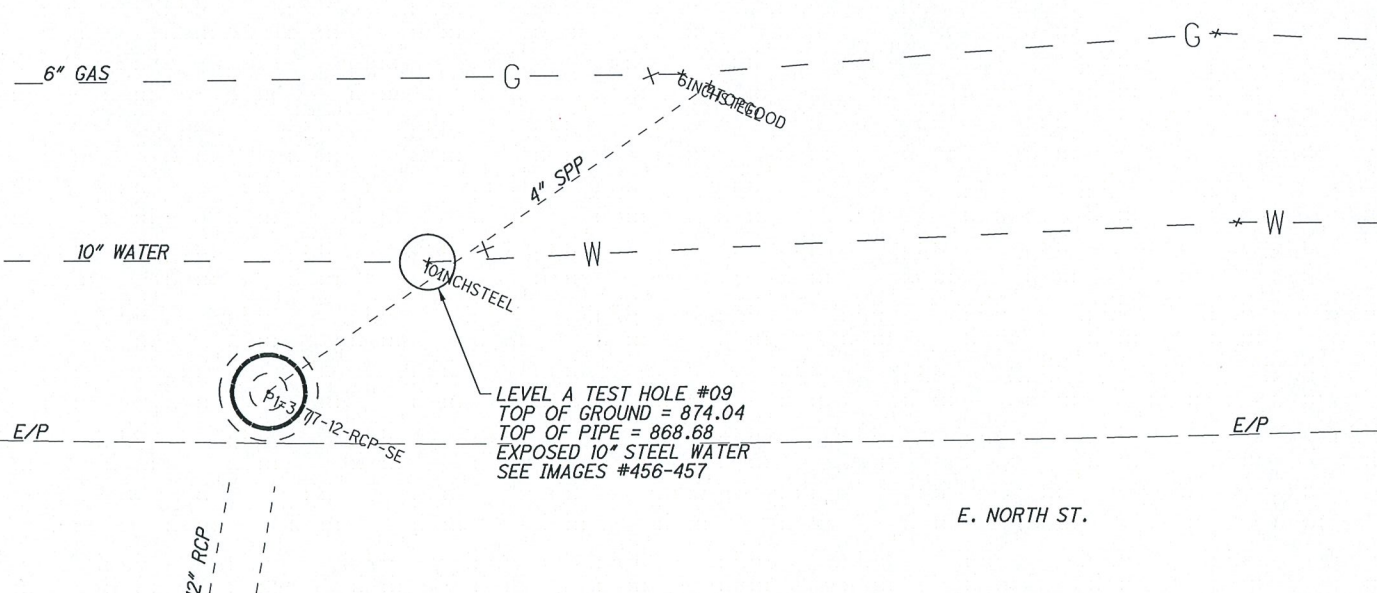
# LEVEL A TEST HOLE CERTIFICATION FORM

PROJECT NAME: SUM-008-0.175  
 PROJECT LOCATION (COUNTY, CITY, STATE): SUMMIT, AKRON, OHIO  
 TEST HOLE LOCATION (PAV., SIDEWALK, ETC): E. NORTH ST.  
 PAVING CONDITION PRIOR TO WORK: N/A  
 B.M. #: \_\_\_\_\_  
 B.M. ELEV: \_\_\_\_\_  
 DESCRIPTION: \_\_\_\_\_  
 B.M. #: \_\_\_\_\_  
 B.M. ELEV: \_\_\_\_\_  
 DESCRIPTION: \_\_\_\_\_

PROJECT #: 16-0187  
 TEST HOLE #: 009  
 UTILITY TO BE LOCATED: 10" WATER  
 DATE OF EXCAVATION: 11-15-2017  
 WEATHER CONDITIONS: 43° AND CLOUDY  
 FOREMAN/TRUCK: N. MILLER/A. CROOKS  
 CONTROL POINT: 106  
 NORTHING: 522871.9760  
 EASTING: 2244221.7250  
 ELEVATION: 1035.6100

RECORDED SIZE & TYPE: CONFIRMED  
 THERE WERE NOT ADDITIONAL UTILITIES IN THE TEST HOLE  
 THE UTILITY WAS IN GOOD CONDITION  
 COLOR OF RIBBON INSTALLED IN TEST HOLE: BLUE  
 PAVING THICKNESS AND TYPE: N/A  
 SOIL TYPE: ROCK AND DIRT  
 FIELD REMARKS: \_\_\_\_\_

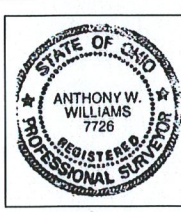
EXISTING GRADE OF GROUND  
 GRADE ELEVATION: 874.04  
 SURVEYED ELEVATION TOP OF UTIL: 868.68  
 SURVEYED ELEVATION BOT. OF UTIL (IF REQ.): \_\_\_\_\_  
 SURVEYED SIZE AND TYPE OF UTIL: 10" STEEL WATER  
 DIRECTION OF UTILITY LINE: NORTHEAST/SOUTHWEST  
 UTILITY REMARKS: \_\_\_\_\_  
 PHOTO IMAGE NUMBERS: 456-457



UTILITY LEGEND			
GAS	G	⊕ TEST HOLE	⊞ ELEC. P.B.
WATER	W	⊙ FIRE HYDRANT	⊕ POWER POLE
TELEPHONE	T	⊙ WATER VALVE	⊕ POWER/LIGHT
ELECTRIC	E	⊙ GAS MARKER	⊕ LIGHT POLE
SANITARY SEWER	SAN	⊙ GAS VALVE	⊙ SAN M.H.
STORM SEWER	FO	⊙ F.O. MARKER	⊞ TRAFFIC P.B.
FIBER OPTIC	CTV	⊞ UNKNOWN P.B.	× GROUND SHOT
CABLE TV	TR		
TRAFFIC			

I, Anthony Williams, do hereby certify that the positioning of the utility facilities provided utilizing the Quality Levels was performed in accordance with ODOT's SULS specifications.

*Anthony Williams*  
 Anthony Williams, P.S.  
 DATE 2/14/2018





National Engineering & Architectural Services, INC. (NEAS)  
 2800 Corporate Exchange Dr.  
 Suite 240  
 Columbus, Ohio 43231  
 Office: (614) 714-0299  
 Fax: (614) 714-0251

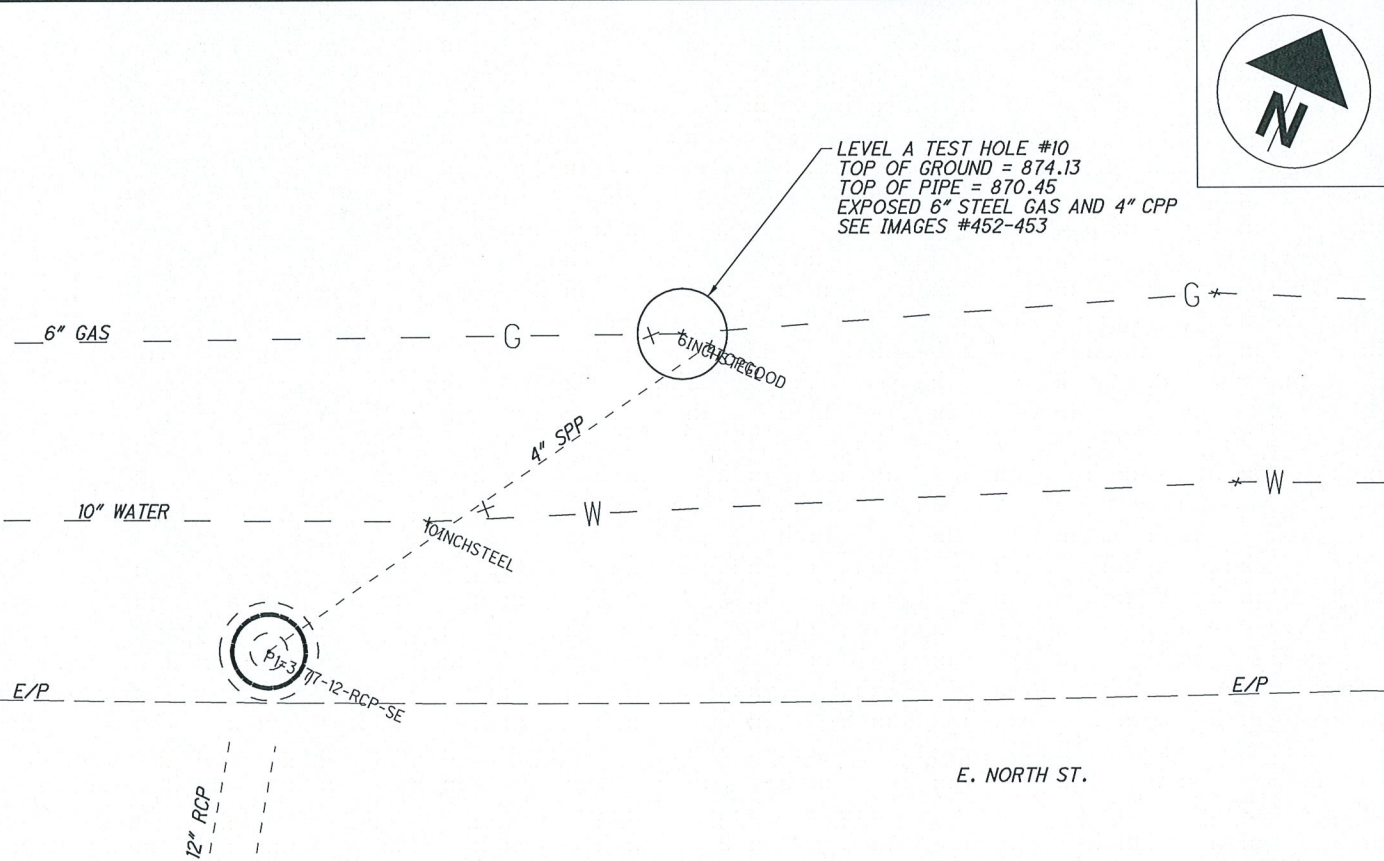
# LEVEL A TEST HOLE CERTIFICATION FORM

PROJECT NAME: SUM-008-0.175  
 PROJECT LOCATION (COUNTY, CITY, STATE): SUMMIT, AKRON, OHIO  
 TEST HOLE LOCATION (PAV., SIDEWALK, ETC): E. NORTH ST.  
 PAVING CONDITION PRIOR TO WORK: N/A  
 B.M. #: \_\_\_\_\_  
 B.M. ELEV: \_\_\_\_\_  
 DESCRIPTION: \_\_\_\_\_  
 B.M. #: \_\_\_\_\_  
 B.M. ELEV: \_\_\_\_\_  
 DESCRIPTION: \_\_\_\_\_

PROJECT #: 16-0187  
 TEST HOLE #: 010  
 UTILITY TO BE LOCATED: 6" GAS  
 DATE OF EXCAVATION: 11-15-2017  
 WEATHER CONDITIONS: 43° AND CLOUDY  
 FOREMAN/TRUCK: N. MILLER/A. CROOKS  
 CONTROL POINT: 106  
 NORTHING: 522871.9760  
 EASTING: 2244221.7250  
 ELEVATION: 1035.6100

RECORDED SIZE & TYPE: CONFIRMED  
 THERE WERE ADDITIONAL UTILITIES IN THE TEST HOLE  
 THE UTILITY WAS IN GOOD CONDITION  
 COLOR OF RIBBON INSTALLED IN TEST HOLE: YELLOW  
 PAVING THICKNESS AND TYPE: N/A  
 SOIL TYPE: ROCK AND DIRT  
 FIELD REMARKS: 4" PVC DRAINAGE PIPE WAS LOCATED IN TEST HOLE, SEE IMAGES.

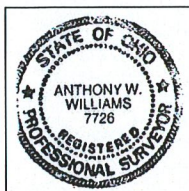
EXISTING GRADE OF GROUND \_\_\_\_\_  
 GRADE ELEVATION: 874.13  
 SURVEYED ELEVATION TOP OF UTIL: 870.45  
 SURVEYED ELEVATION BOT. OF UTIL (IF REQ.): \_\_\_\_\_  
 SURVEYED SIZE AND TYPE OF UTIL: 6" STEEL WATER  
 DIRECTION OF UTILITY LINE: NORTHEAST/SOUTHWEST  
 UTILITY REMARKS: \_\_\_\_\_  
 PHOTO IMAGE NUMBERS: 452-453



UTILITY LEGEND			
GAS	G	⊕ TEST HOLE	⊕ ELEC. P.B.
WATER	W	⊕ FIRE HYDRANT	⊕ POWER POLE
TELEPHONE	T	⊕ WATER VALVE	⊕ POWER/LIGHT
ELECTRIC	E	⊕ GAS MARKER	⊕ LIGHT POLE
SANITARY SEWER	SAN	⊕ GAS VALVE	⊕ SAN M.H.
STORM SEWER	SS	⊕ F.O. MARKER	⊕ TRAFFIC P.B.
FIBER OPTIC	FO	⊕ UNKNOWN P.B.	⊕ GROUND SHOT
CABLE TV	CTV		
TRAFFIC	TR		

I, Anthony Williams, do hereby certify that the positioning of the utility facilities provided utilizing the Quality Levels was performed in accordance with ODOT's SULS specifications.

*Anthony Williams*  
 Anthony Williams, P.S.  
 DATE 2/14/2018





National Engineering & Architectural Services Inc.

National Engineering & Architectural Services, INC. (NEAS)  
 2800 Corporate Exchange Dr.  
 Suite 240  
 Columbus, Ohio 43231  
 Office: (614) 714-0299  
 Fax: (614) 714-0251

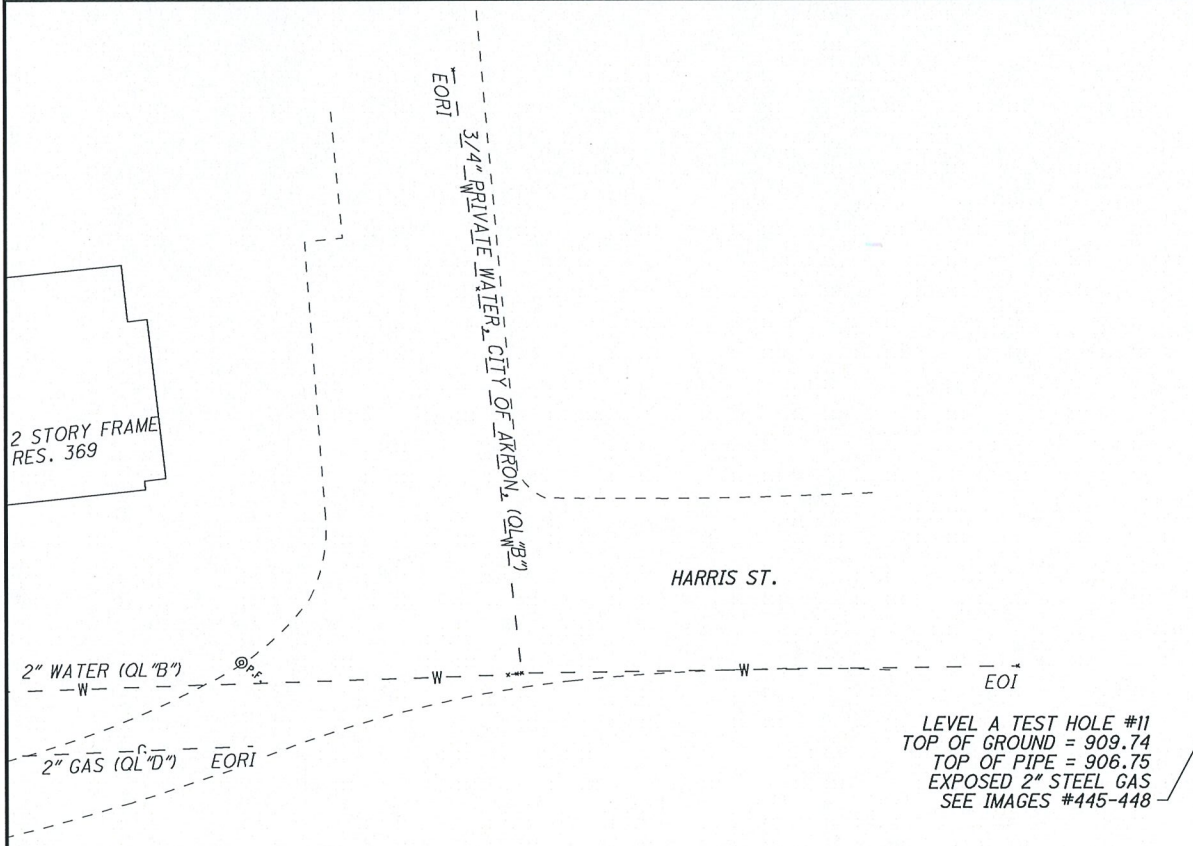
# LEVEL A TEST HOLE CERTIFICATION FORM

PROJECT NAME: SUM-008-1,75  
 PROJECT LOCATION (COUNTY, CITY, STATE): SUMMIT, AKRON, OHIO  
 TEST HOLE LOCATION (PAV., SIDEWALK, ETC): HARRIS ST.  
 PAVING CONDITION PRIOR TO WORK: N/A  
 B.M. #: \_\_\_\_\_  
 B.M. ELEV: \_\_\_\_\_  
 DESCRIPTION: \_\_\_\_\_  
 B.M. #: \_\_\_\_\_  
 B.M. ELEV: \_\_\_\_\_  
 DESCRIPTION: \_\_\_\_\_

PROJECT #: 16-0187  
 TEST HOLE #: 011  
 UTILITY TO BE LOCATED: 2" GAS  
 DATE OF EXCAVATION: 11-13-2017  
 WEATHER CONDITIONS: 41° AND CLOUDY  
 FOREMAN/TRUCK: N. MILLER/A. CROOKS  
 CONTROL POINT: 104  
 NORTHING: 519926,0390  
 EASTING: 2244314,9330  
 ELEVATION: 876.2100

RECORDED SIZE & TYPE: CONFIRMED  
 THERE WERE NOT ADDITIONAL UTILITIES IN THE TEST HOLE  
 THE UTILITY WAS IN GOOD CONDITION  
 COLOR OF RIBBON INSTALLED IN TEST HOLE: YELLOW  
 PAVING THICKNESS AND TYPE: N/A  
 SOIL TYPE: DIRT AND ROCK  
 FIELD REMARKS: FOUND 2" STEEL AT STAKE OUT POINT

EXISTING GRADE OF GROUND  
 GRADE ELEVATION: 909.74  
 SURVEYED ELEVATION TOP OF UTIL: 906.75  
 SURVEYED ELEVATION BOT. OF UTIL (IF REQ.): \_\_\_\_\_  
 SURVEYED SIZE AND TYPE OF UTIL: 2" STEEL GAS  
 DIRECTION OF UTILITY LINE: NORTH/SOUTH  
 UTILITY REMARKS: \_\_\_\_\_  
 PHOTO IMAGE NUMBERS: 445,446,448



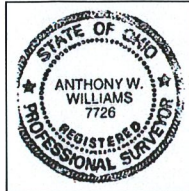
LEVEL A TEST HOLE #11  
 TOP OF GROUND = 909.74  
 TOP OF PIPE = 906.75  
 EXPOSED 2" STEEL GAS  
 SEE IMAGES #445-448

### UTILITY LEGEND

GAS ——— G ———	⊕ TEST HOLE	⊕ ELEC. P.B.
WATER ——— W ———	⊕ FIRE HYDRANT	⊕ POWER POLE
TELEPHONE ——— T ———	⊕ WATER VALVE	⊕ POWER/LIGHT
ELECTRIC ——— E ———	⊕ GAS MARKER	⊕ LIGHT POLE
SANITARY SEWER ——— SAN ———	⊕ GAS VALVE	⊕ SAN M.H.
STORM SEWER ——— S ———	○ F.O. MARKER	⊕ TRAFFIC P.B.
FIBER OPTIC ——— FO ———	⊕ UNKNOWN P.B.	× GROUND SHOT
CABLE TV ——— CTV ———		
TRAFFIC ——— TR ———		

I, Anthony Williams, do hereby certify that the positioning of the utility facilities provided utilizing the Quality Levels was performed in accordance with ODOT's SULLS specifications.

*Anthony Williams*  
 Anthony Williams, P.S.  
 DATE 2/14/2018





National Engineering & Architectural Services Inc.

National Engineering & Architectural Services, INC. (NEAS)  
 2800 Corporate Exchange Dr.  
 Suite 240  
 Columbus, Ohio 43231  
 Office: (614) 714-0299  
 Fax: (614) 714-0251

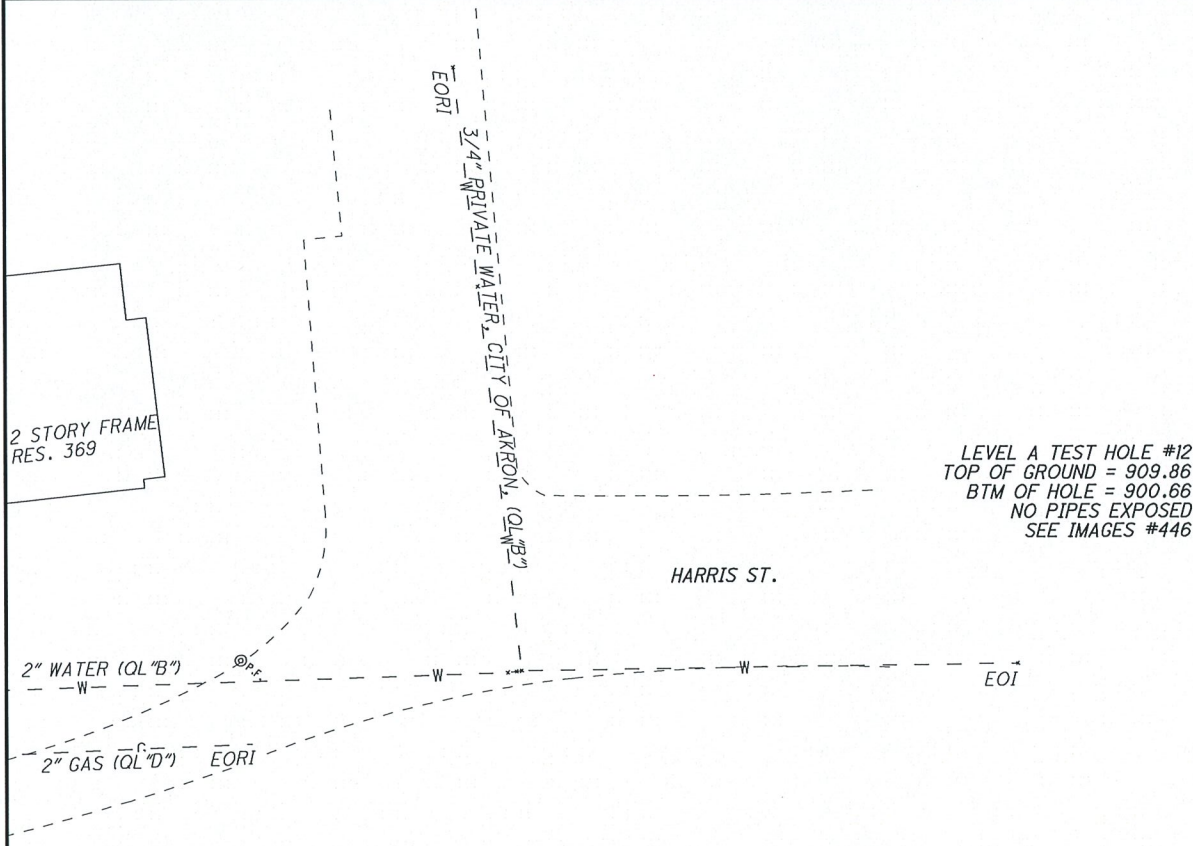
# LEVEL A TEST HOLE CERTIFICATION FORM

PROJECT NAME: SUM-008-1.75  
 PROJECT LOCATION (COUNTY, CITY, STATE): SUMMIT, AKRON, OHIO  
 TEST HOLE LOCATION (PAV., SIDEWALK, ETC): HARRIS ST.  
 PAVING CONDITION PRIOR TO WORK: N/A  
 B.M. #: \_\_\_\_\_  
 B.M. ELEV: \_\_\_\_\_  
 DESCRIPTION: \_\_\_\_\_  
 B.M. #: \_\_\_\_\_  
 B.M. ELEV: \_\_\_\_\_  
 DESCRIPTION: \_\_\_\_\_

PROJECT #: 16-0187  
 TEST HOLE #: 012  
 UTILITY TO BE LOCATED: 2" WATER  
 DATE OF EXCAVATION: 11-13-2017  
 WEATHER CONDITIONS: 41° AND CLOUDY  
 FOREMAN/TRUCK: N. MILLER/A. CROOKS  
 CONTROL POINT: 104  
 NORTHING: 519926.0390  
 EASTING: 2244314.9330  
 ELEVATION: 876.2100

RECORDED SIZE & TYPE: NOT CONFIRMED  
 THERE WERE NOT ADDITIONAL UTILITIES IN THE TEST HOLE  
 THE UTILITY WAS/WAS NOT IN GOOD CONDITION  
 COLOR OF RIBBON INSTALLED IN TEST HOLE: \_\_\_\_\_  
 PAVING THICKNESS AND TYPE: N/A  
 SOIL TYPE: DIRT AND ROCK  
 FIELD REMARKS: TRENCH 5FT X 9FT WAS DUG LOOKING FOR LINE  
PROBE WAS USED TO 10FT DEEP, NO LINE FOUND.

EXISTING GRADE OF GROUND \_\_\_\_\_  
 GRADE ELEVATION: 909.86  
 SURVEYED ELEVATION TOP OF UTIL: \_\_\_\_\_  
 SURVEYED ELEVATION BOT. OF UTIL (IF REQ.): 900.66  
 SURVEYED SIZE AND TYPE OF UTIL: \_\_\_\_\_  
 DIRECTION OF UTILITY LINE: \_\_\_\_\_  
 UTILITY REMARKS: NO WATER FOUND  
 PHOTO IMAGE NUMBERS: 446



LEVEL A TEST HOLE #12  
 TOP OF GROUND = 909.86  
 BTM OF HOLE = 900.66  
 NO PIPES EXPOSED  
 SEE IMAGES #446

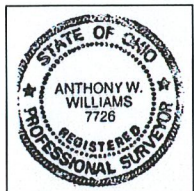
### UTILITY LEGEND

GAS _____ G _____	⊕ TEST HOLE	⊕ ELEC. P.B.
WATER _____ W _____	⊕ FIRE HYDRANT	⊕ POWER POLE
TELEPHONE _____ T _____	⊕ WATER VALVE	⊕ POWER/LIGHT
ELECTRIC _____ E _____	⊕ GAS MARKER	⊕ LIGHT POLE
SANITARY SEWER _____ SAN _____	⊕ GAS VALVE	⊕ SAN M.H.
STORM SEWER _____ S _____	⊕ F.O. MARKER	⊕ TRAFFIC P.B.
FIBER OPTIC _____ FO _____	⊕ UNKNOWN P.B.	⊕ GROUND SHOT
CABLE TV _____ CTV _____		
TRAFFIC _____ TR _____		

I, Anthony Williams, do hereby certify that the positioning of the utility facilities provided utilizing the Quality Levels was performed in accordance with ODOT's SALS specifications.

Anthony Williams, P.S.

DATE 2/14/2018





National Engineering & Architectural Services Inc.

National Engineering & Architectural Services, INC. (NEAS)  
 2800 Corporate Exchange Dr.  
 Suite 240  
 Columbus, Ohio 43231  
 Office: (614) 714-0299  
 Fax: (614) 714-0251

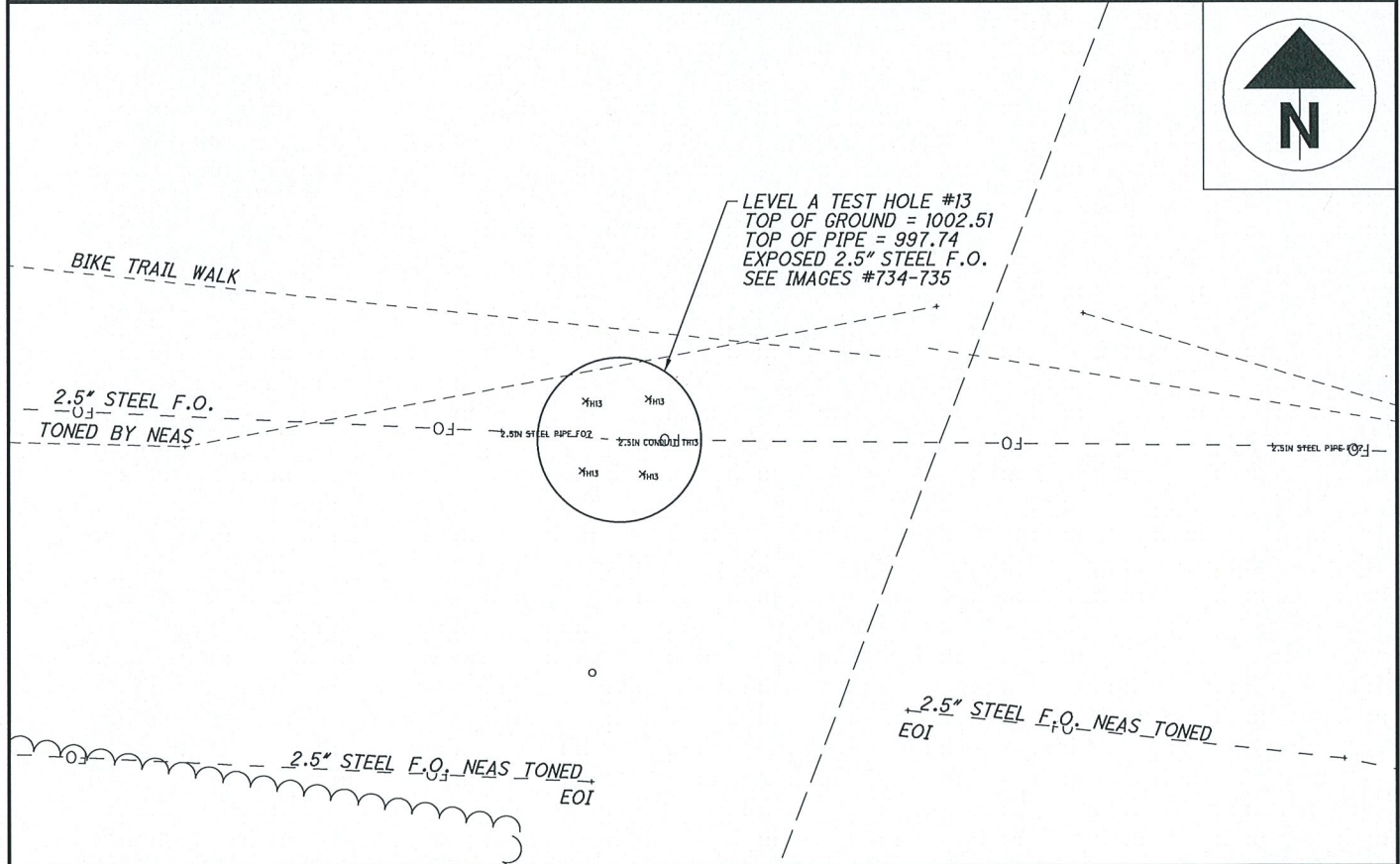
# LEVEL A TEST HOLE CERTIFICATION FORM

PROJECT NAME: SUM-008-1.75  
 PROJECT LOCATION (COUNTY, CITY, STATE): SUMMIT, AKRON, OHIO  
 TEST HOLE LOCATION (PAV., SIDEWALK, ETC): BIKE TRAIL  
 PAVING CONDITION PRIOR TO WORK: N/A  
 B.M. #: \_\_\_\_\_  
 B.M. ELEV: \_\_\_\_\_  
 DESCRIPTION: \_\_\_\_\_  
 B.M. #: \_\_\_\_\_  
 B.M. ELEV: \_\_\_\_\_  
 DESCRIPTION: \_\_\_\_\_

PROJECT #: 16-0187  
 TEST HOLE #: 013  
 UTILITY TO BE LOCATED: FIBER OPTIC  
 DATE OF EXCAVATION: 11-14-2017  
 WEATHER CONDITIONS: 41° AND CLOUDY  
 FOREMAN/TRUCK: N. MILLER/A. CROOKS  
 CONTROL POINT: 104  
 NORTHING: 519926.039  
 EASTING: 2244314.9330  
 ELEVATION: 876.2100

RECORDED SIZE & TYPE: CONFIRMED  
 THERE WERE NOT ADDITIONAL UTILITIES IN THE TEST HOLE  
 THE UTILITY WAS IN GOOD CONDITION  
 COLOR OF RIBBON INSTALLED IN TEST HOLE: ORANGE  
 PAVING THICKNESS AND TYPE: N/A  
 SOIL TYPE: ROCK AND DIRT  
 FIELD REMARKS: \_\_\_\_\_

EXISTING GRADE OF GROUND \_\_\_\_\_  
 GRADE ELEVATION: 1002.51  
 SURVEYED ELEVATION TOP OF UTIL: 997.74  
 SURVEYED ELEVATION BOT. OF UTIL (IF REQ.): \_\_\_\_\_  
 SURVEYED SIZE AND TYPE OF UTIL: 2.5" STEEL FIBER OPTIC  
 DIRECTION OF UTILITY LINE: EAST/WEST  
 UTILITY REMARKS: \_\_\_\_\_  
 PHOTO IMAGE NUMBERS: 734-735

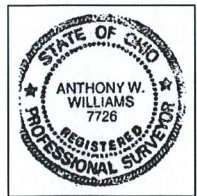


### UTILITY LEGEND

GAS — G —	⊕ TEST HOLE	⊗ ELEC. P.B.
WATER — W —	⊙ FIRE HYDRANT	⊕ POWER POLE
TELEPHONE — T —	⊕ WATER VALVE	⊕ POWER/LIGHT
ELECTRIC — E —	⊕ GAS MARKER	⊕ LIGHT POLE
SANITARY SEWER — SAN —	⊕ GAS VALVE	⊗ SAN M.H.
STORM SEWER — — —	⊙ F.O. MARKER	⊗ TRAFFIC P.B.
FIBER OPTIC — FO —	⊗ UNKNOWN P.B.	⊗ GROUND SHOT
CABLE TV — CTV —		
TRAFFIC — TR —		

I, Anthony Williams, do hereby certify that the positioning of the utility facilities provided utilizing the Quality Levels was performed in accordance with ODOT's SLS specifications.

*Anthony Williams*  
 Anthony Williams, P.S.  
 DATE 2/14/2018





National Engineering & Architectural Services Inc.

National Engineering & Architectural Services, INC. (NEAS)  
 2800 Corporate Exchange Dr.  
 Suite 240  
 Columbus, Ohio 43231  
 Office: (614) 714-0299  
 Fax: (614) 714-0251

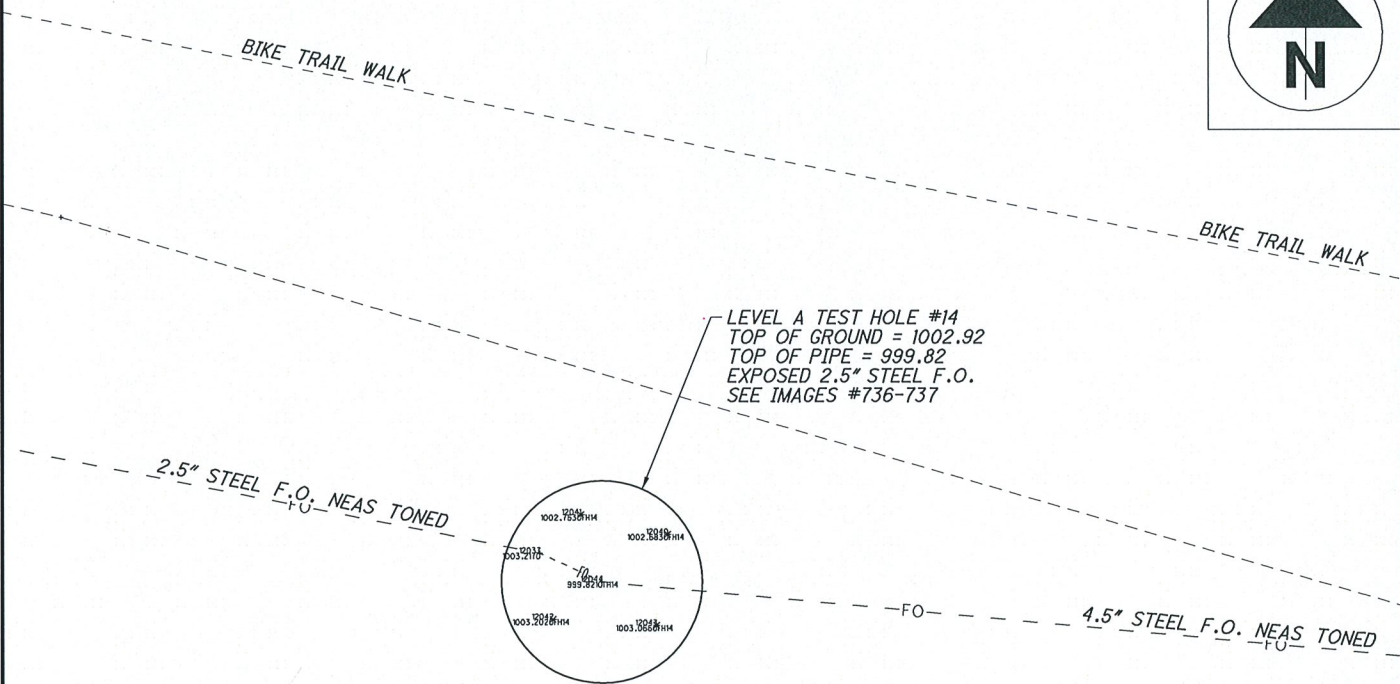
# LEVEL A TEST HOLE CERTIFICATION FORM

PROJECT NAME: SUM-008-1.75  
 PROJECT LOCATION (COUNTY, CITY, STATE): SUMMIT, AKRON, OHIO  
 TEST HOLE LOCATION (PAV., SIDEWALK, ETC): BIKE TRAIL  
 PAVING CONDITION PRIOR TO WORK: N/A  
 B.M. #: \_\_\_\_\_  
 B.M. ELEV: \_\_\_\_\_  
 DESCRIPTION: \_\_\_\_\_  
 B.M. #: \_\_\_\_\_  
 B.M. ELEV: \_\_\_\_\_  
 DESCRIPTION: \_\_\_\_\_

PROJECT #: 16-0187  
 TEST HOLE #: 014  
 UTILITY TO BE LOCATED: FIBER OPTIC  
 DATE OF EXCAVATION: 11-14-2017  
 WEATHER CONDITIONS: 41° AND CLOUDY  
 FOREMAN/TRUCK: N. MILLER/A. CROOKS  
 CONTROL POINT: 104  
 NORTHING: 519926.039  
 EASTING: 2244314.9330  
 ELEVATION: 876.2100

RECORDED SIZE & TYPE: CONFIRMED  
 THERE WERE NOT ADDITIONAL UTILITIES IN THE TEST HOLE  
 THE UTILITY WAS IN GOOD CONDITION  
 COLOR OF RIBBON INSTALLED IN TEST HOLE: ORANGE  
 PAVING THICKNESS AND TYPE: N/A  
 SOIL TYPE: ROCK AND DIRT  
 FIELD REMARKS: \_\_\_\_\_

EXISTING GRADE OF GROUND \_\_\_\_\_  
 GRADE ELEVATION: 1002.92  
 SURVEYED ELEVATION TOP OF UTIL: 999.82  
 SURVEYED ELEVATION BOT. OF UTIL (IF REQ.): \_\_\_\_\_  
 SURVEYED SIZE AND TYPE OF UTIL: 4.5" STEEL FIBER OPTIC  
 DIRECTION OF UTILITY LINE: EAST/WEST  
 UTILITY REMARKS: \_\_\_\_\_  
 PHOTO IMAGE NUMBERS: 736-737



### UTILITY LEGEND

GAS — G —	⊕ TEST HOLE	⊗ ELEC. P.B.
WATER — W —	⊙ FIRE HYDRANT	⊕ POWER POLE
TELEPHONE — T —	⊕ WATER VALVE	⊕ POWER/LIGHT
ELECTRIC — E —	+G GAS MARKER	⊕ LIGHT POLE
SANITARY SEWER — SAN —	⊕ GAS VALVE	⊗ SAN M.H.
STORM SEWER — — —	○ F.O. MARKER	⊗ TRAFFIC P.B.
FIBER OPTIC — FO —	⊗ UNKNOWN P.B.	× GROUND SHOT
CABLE TV — CTV —		
TRAFFIC — TR —		

I, Anthony Williams, do hereby certify that the positioning of the utility facilities provided utilizing the Quality Levels was performed in accordance with ODOT's SULS specifications.

*Anthony Williams*  
 Anthony Williams, P.S.  
 DATE 2/14/2018

