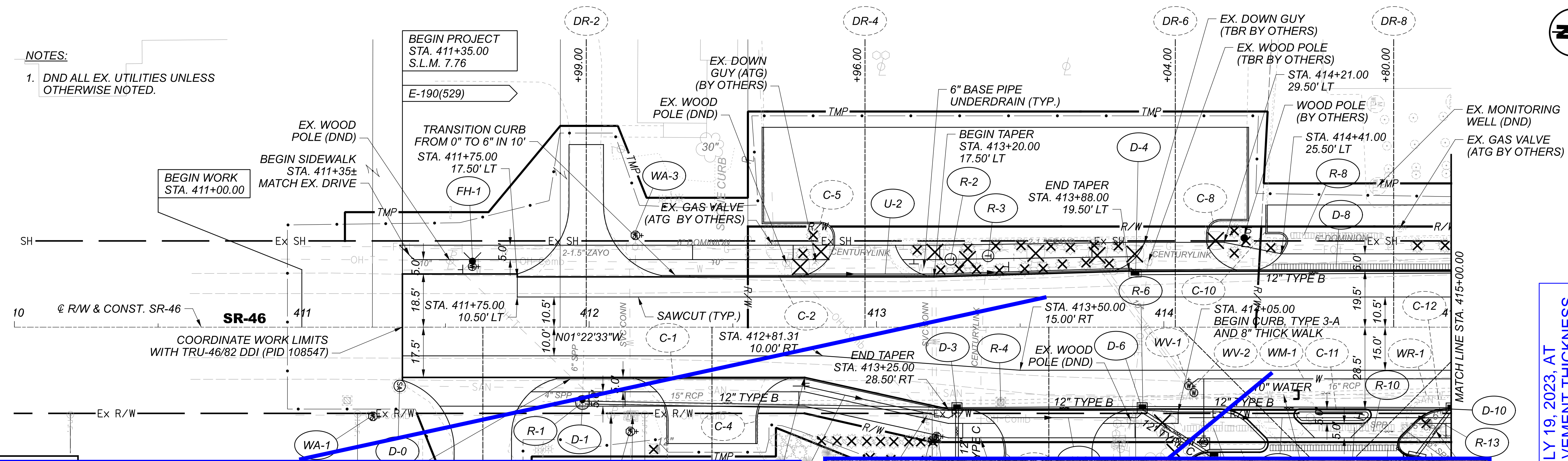
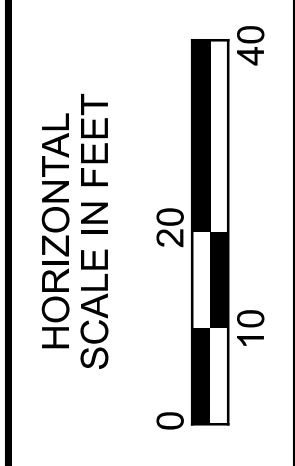


NOTES:

1. DND ALL EX. UTILITIES UNLESS OTHERWISE NOTED.



PAVEMENT CORES WERE TAKEN ON JULY 19, 2023, AT APPROXIMATE LOCATIONS SHOWN HERE. PAVEMENT THICKNESS MAY NOT BE REPRESENTATIVE OF CONDITIONS ELSEWHERE



PLAN AND PROFILE - SR-46
STA. 410+00.00 TO STA. 415+00.00

DESIGN AGENCY

Michael Baker INTERNATIONAL

DESIGNER

MZG

REVIEWER

JTH 03/25/22

PROJECT ID

109520

SHEET TOTAL

P.59 P.166

TRU-46-7.81

410

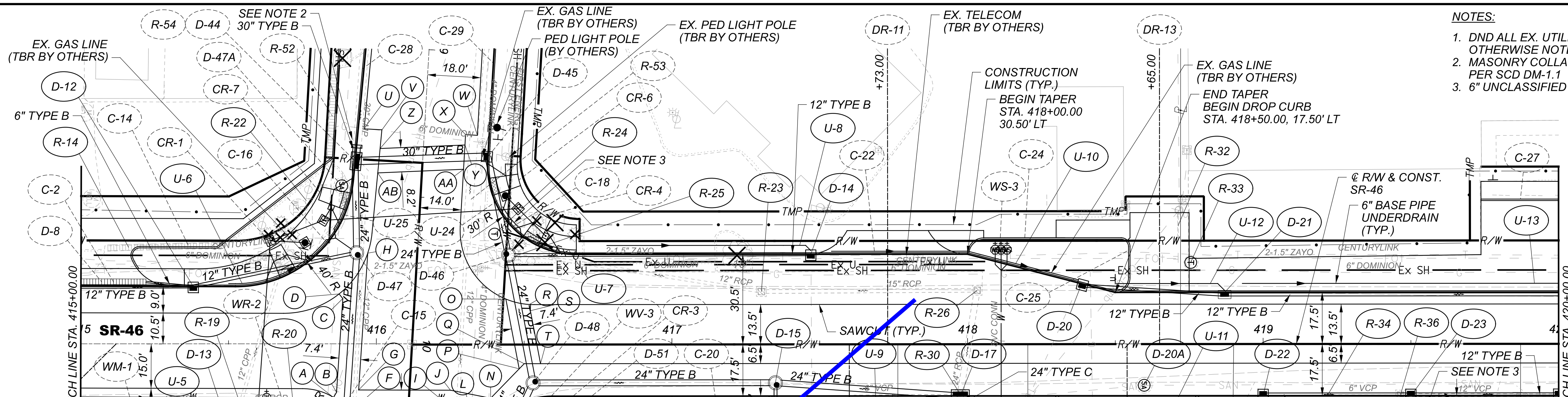
411

412

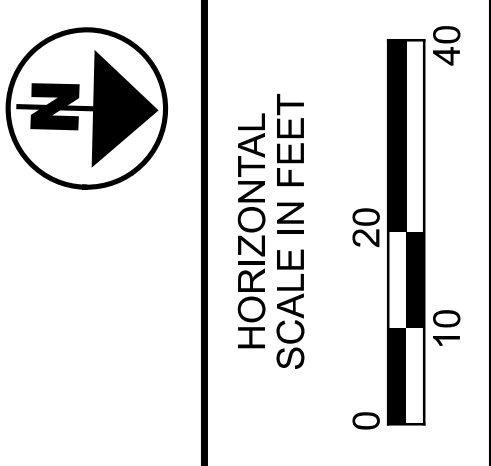
413

414

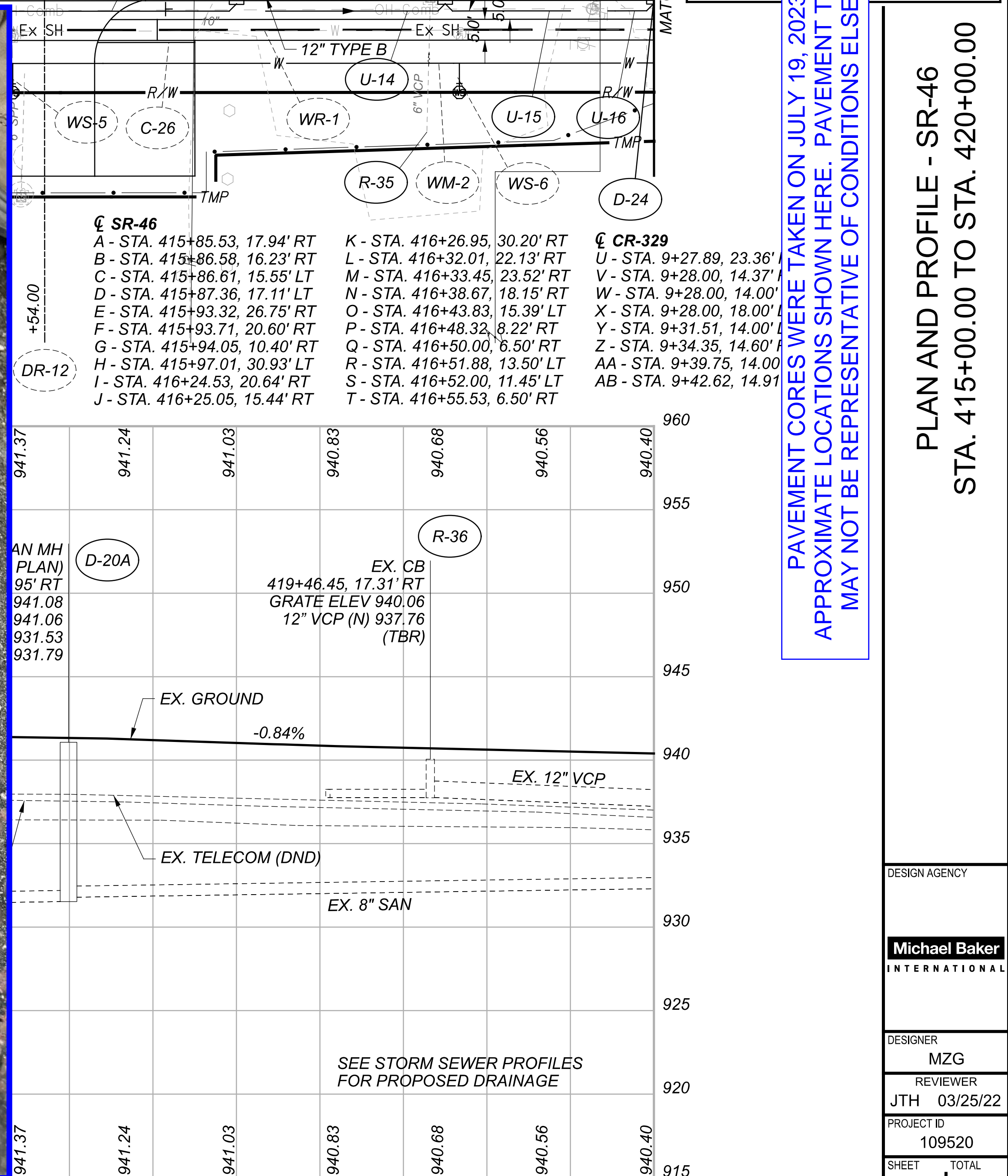
415



- NOTES:**
- DND ALL EX. UTILITIES UNLESS OTHERWISE NOTED
 - MASONRY COLLAR PER SCD DM-1.1
 - 6" UNCLASSIFIED UNDERDRAIN



CROSS REFERENCES	
SHEET	DESCRIPTION
P.2	SCHEMATIC PLAN
P.3 & P.5	TYPICAL SECTIONS
P.46 - P.57	SUBSUMMARIES
P.66	PVT REMOVAL PLAN
P.70	PAVEMENT PLAN
P.82 - P.90	CROSS SECTIONS
P.113 - P.117	SECTION DETAILS
P.122 - P.123	VE PROFILES
P.131 - P.133	RM PROFILES
P.144 - P.145	R WORK PLAN
P.153	PVT MARK PLAN
P.162	GENERAL PLAN



PAVEMENT CORES WERE TAKEN ON JULY 19, 2023, AT APPROXIMATE LOCATIONS SHOWN HERE. PAVEMENT THICKNESS MAY NOT BE REPRESENTATIVE OF CONDITIONS ELSEWHERE

PLAN AND PROFILE - SR-46
STA. 415+00.00 TO STA. 420+00.00

DESIGN AGENCY	Michael Baker INTERNATIONAL
DESIGNER	MZG
REVIEWER	JTH 03/25/22
PROJECT ID	109520
SHEET	P.60
TOTAL	P.166

TRU-46-7.81

415

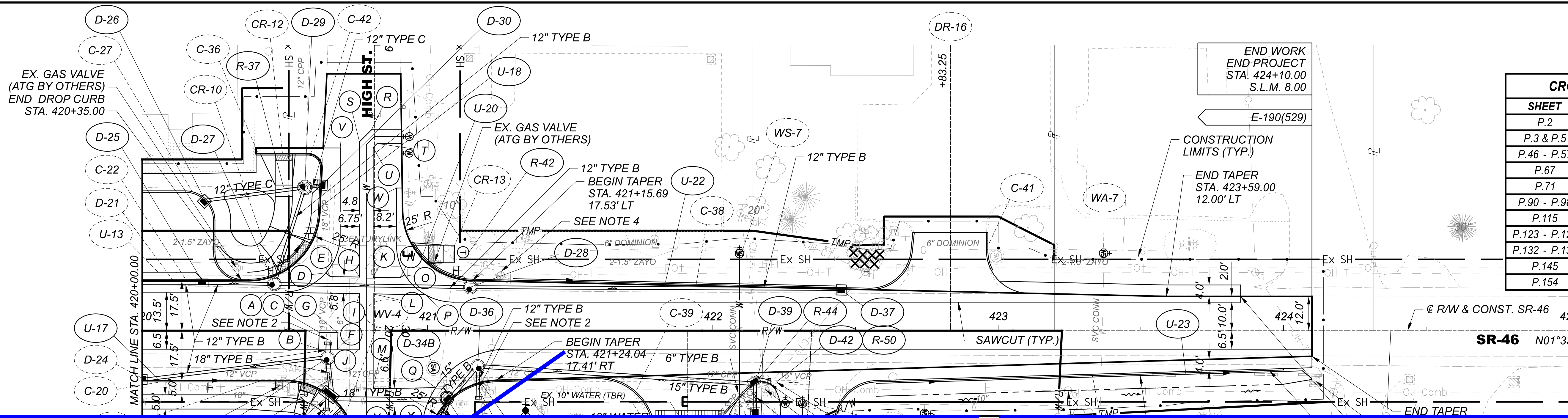
416

417

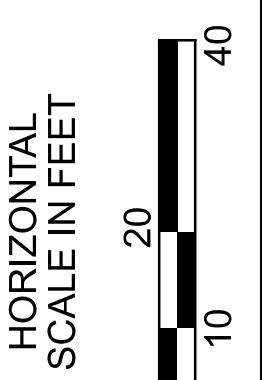
418

419

420



CROSS REFERENCES	
SHEET	DESCRIPTION
P.2	SCHEMATIC PLAN
P.3 & P.5	TYPICAL SECTIONS
P.46 - P.57	SUBSUMMARIES
P.67	PVT REMOVAL PLAN
P.71	PAVEMENT PLAN
P.90 - P.98	CROSS SECTIONS
P.115	INTERSECTION DETAIL
P.123 - P.124	DRIVE PROFILES
P.132 - P.133	STORM PROFILES
P.145	WATER WORK PLAN
P.154	SIGN & PVT MARK PLAN



PAVEMENT CORES WERE TAKEN ON JULY 19, 2023, AT APPROXIMATE LOCATIONS SHOWN HERE. PAVEMENT THICKNESS MAY NOT BE REPRESENTATIVE OF CONDITIONS ELSEWHERE

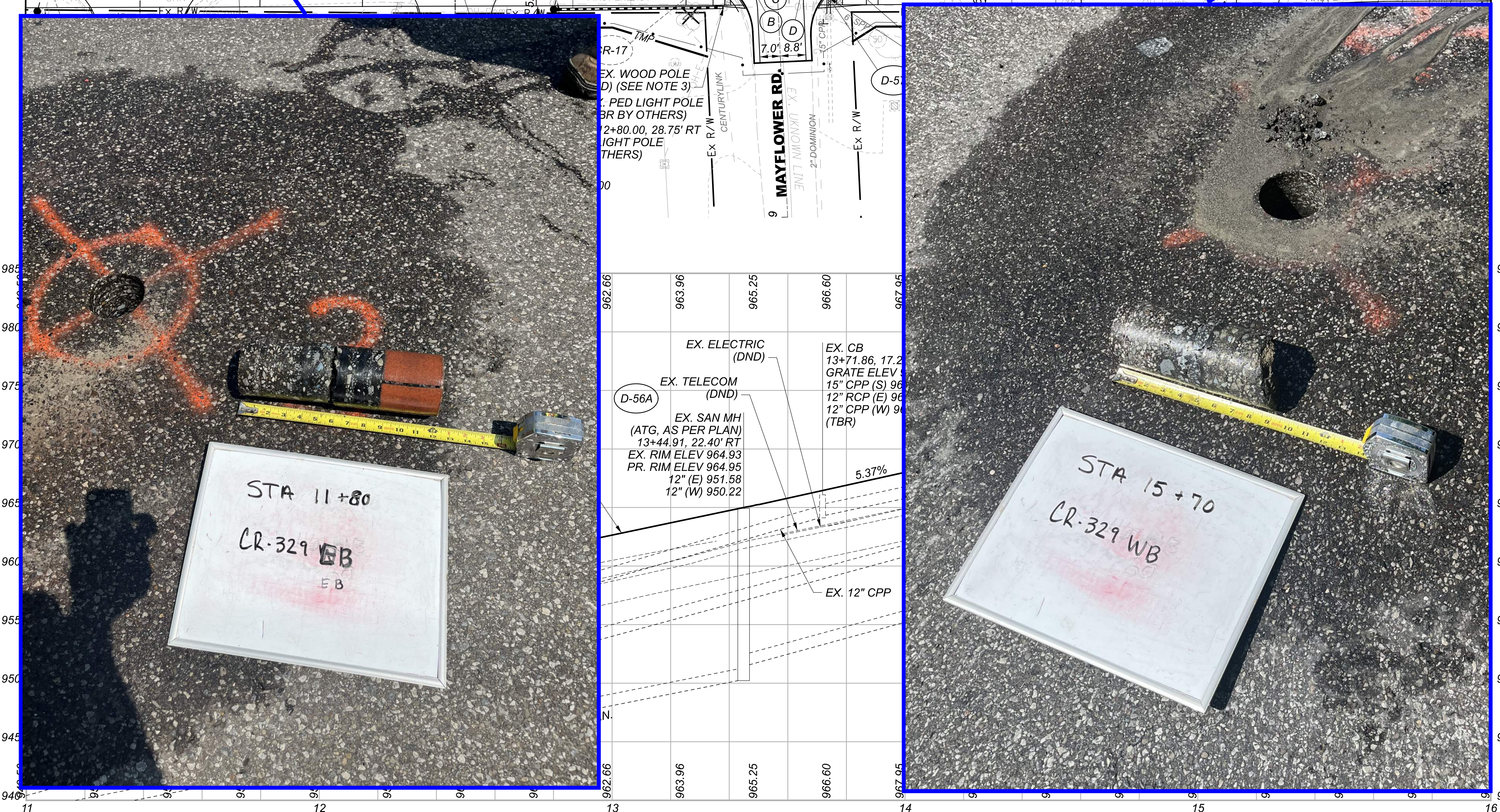
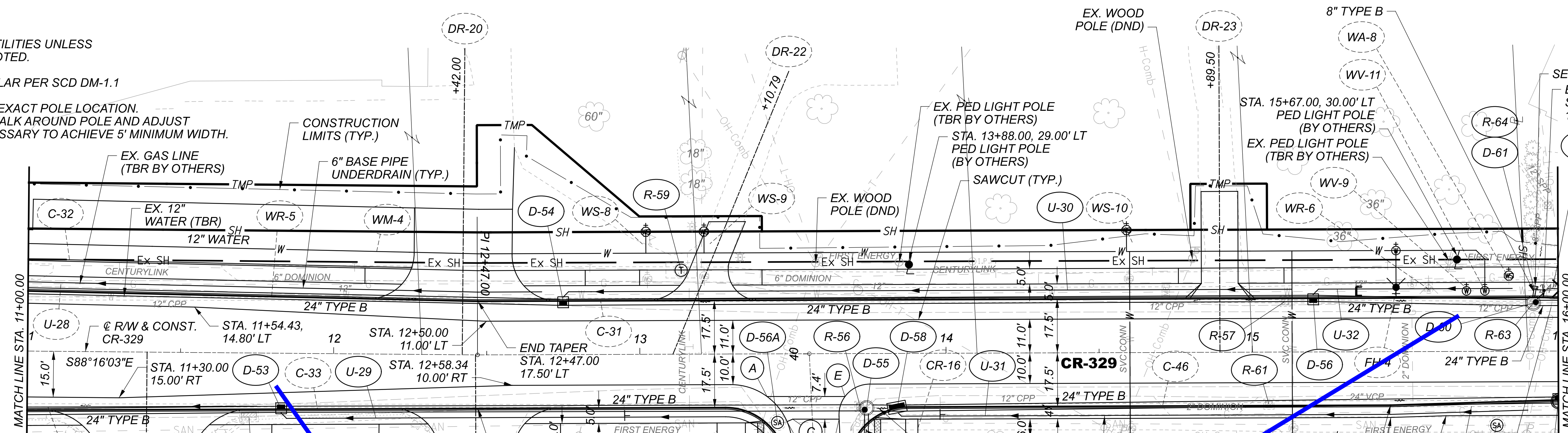
PLAN AND PROFILE - SR-46
STA. 420+00.00 TO STA. 425+00.00

DESIGN AGENCY	Michael Baker INTERNATIONAL
DESIGNER	MZG
REVIEWER	JTH 03/25/22
PROJECT ID	109520
SHEET TOTAL	P.61 P.166

TBL146-781

NOTES:

1. DND ALL EX. UTILITIES UNLESS OTHERWISE NOTED.
2. MASONRY COLLAR PER SCD DM-1.1
3. FIELD LOCATE EXACT POLE LOCATION. CONSTRUCT WALK AROUND POLE AND ADJUST WALK AS NECESSARY TO ACHIEVE 5' MINIMUM WIDTH.



SEE NOTE 2
 BEGIN TAPER
 STA. 15+95.22,
 17.50' LT

CROSS REFERENCES	
SHEET	DESCRIPTION
P.2	SCHEMATIC PLAN
P.4 & P.6	TYPICAL SECTIONS
P.46 & P.57	SUBSUMMARIES
P.66 & P.68	PVT REMOVAL PLAN
P.70 & P.72	PAVEMENT PLAN
P.102 - P.110	CROSS SECTIONS
P.116	SECTION DETAIL
P.125 - P.127	PAVE PROFILES
P.134 - P.135	FORM PROFILES
P.146 - P.147	WORK PLAN
P.153 & P.154	PVT MARK PLAN

PAVEMENT CORES WERE TAKEN ON JULY 19, 2023, AT APPROXIMATE LOCATIONS SHOWN HERE. PAVEMENT THICKNESS MAY NOT BE REPRESENTATIVE OF CONDITIONS ELSEWHERE

PLAN AND PROFILE - CR-329
 STA. 11+00.00 TO STA. 16+00.00

DESIGN AGENCY

Michael Baker
 INTERNATIONAL

DESIGNER
 MZG

REVIEWER
 JTH 03/25/22

PROJECT ID
 109520

SHEET TOTAL
 P.63 | P.166

