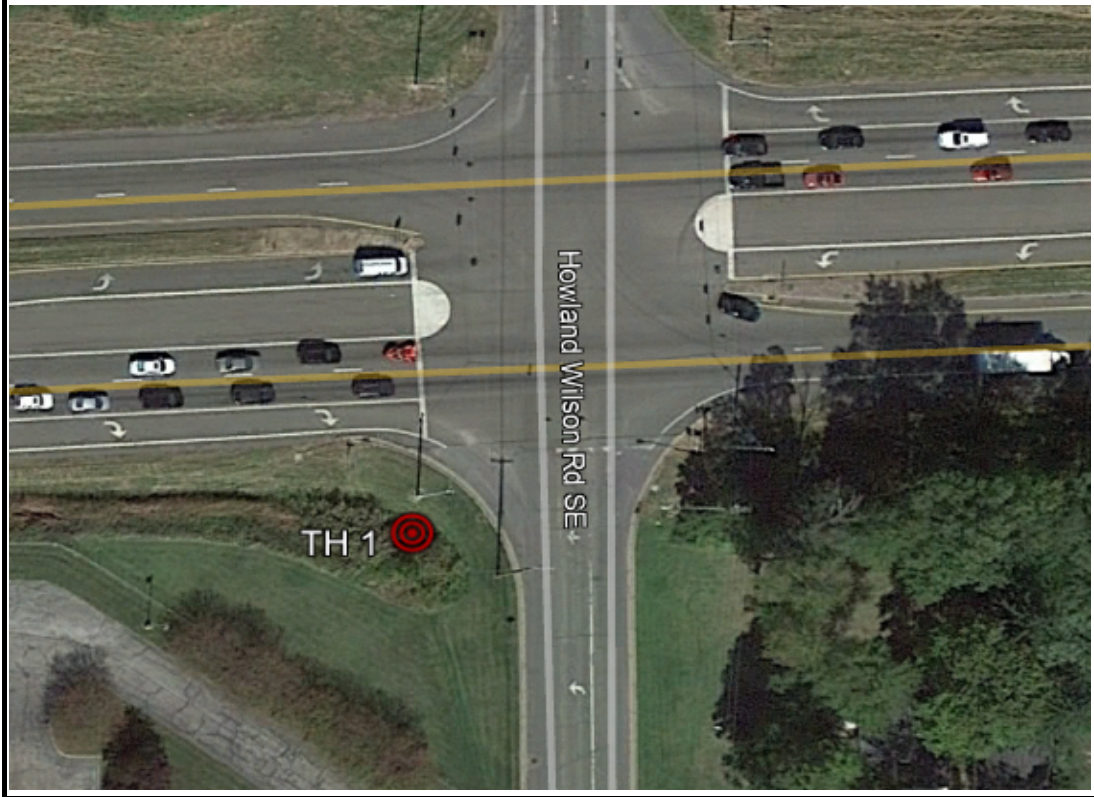




Surveying And Mapping, LLC (SAM)
 12480 DeBartolo Drive, Unit F
 North Jackson, OH 44451
 Office: 330-794-4455

TEST HOLE 1

Project:	TRUMBULL 82 HOWLAND	Date Performed:	5/18/2021
SAM, LLC Project #	1018047347	Client:	ODOT
Project Location:	SR 82 & HOWLAND WILSON RD	Surface Material & Thickness:	GRASS SHOULDER, NATURAL GROUND
Utility Location:	SW CORNER SR 82 & HOWLAND WILSON RD	Surface Elevation:	1058.50'
Utility Sta./Offset:	808+59.78, 99.29' RIGHT	Surface Condition:	AVERAGE
Record Utility:	4" STEEL GAS LINE	Trench Material:	CLAY
Utility Owner:	DOMINION ENERGY OHIO	Utility Bedding Material:	UNKNOWN
Contact:	GREGORY TOMPKINS	Utility Found:	* 4" STEEL GAS LINE
Phone/Email:	(330) 664-2409 / GREGORY.R.TOMPKINS@DOMINIONENERGY.COM	Utility Condition:	GOOD
Field Crew:	PJ REYNOLDS / TRENT WHITE	Utility Depth (Top):	3.42'
Field Conditions:	CLEAR, 58 DEGREES F		



PROJECT CONTROL

CNPT T200

N	574802.51'
E	2456030.76'
Elev.	1061.75'

UTILITY COORDINATES

N	574583.35'
E	2455945.99'
Elev.	1055.08'

Comments

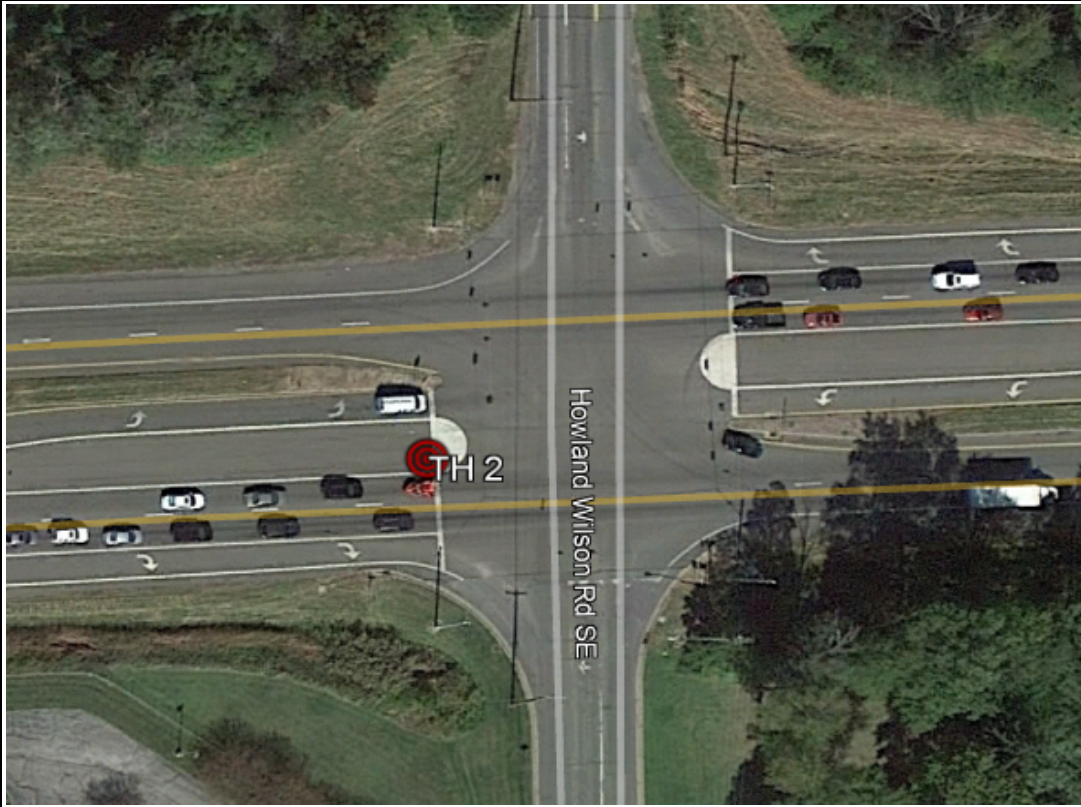
* THE 4" STEEL GAS LINE IS MAKING A NOTICABLE UPWARD VERTICAL GRADE CHANGE IN A NORTHWESTERLY DIRECTION.



Surveying And Mapping, LLC (SAM)
 12480 DeBartolo Drive, Unit F
 North Jackson, OH 44451
 Office: 330-794-4455

TEST HOLE 2

Project:	TRUMBULL 82 HOWLAND	Date Performed:	5/19/2021
SAM, LLC Project #	1018047347	Client:	ODOT
Project Location:	SR 82 & HOWLAND WILSON RD	Surface Material & Thickness:	ASPHALT ROADWAY, 18" ASPHALT
Utility Location:	EAST BOUND 82 & HOWLAND WILSON RD	Surface Elevation:	1061.97'
Utility Sta./Offset:	808+63.10, 16.53' RIGHT	Surface Condition:	AVERAGE
Record Utility:	4" STEEL GAS LINE	Trench Material:	HARD GRAVEL & CLAY
Utility Owner:	DOMINION ENERGY OHIO	Utility Bedding Material:	UNKNOWN
Contact:	GREGORY TOMPKINS	Utility Found:	* 4" STEEL GAS LINE
Phone/Email:	(330) 664-2409 / GREGORY.R.TOMPKINS@DOMINIONENERGY.COM	Utility Condition:	GOOD
Field Crew:	PJ REYNOLDS / TRENT WHITE	Utility Depth (Top):	5.24'
Field Conditions:	CLEAR, 73 DEGREES F		



PROJECT CONTROL

CNPT T200

N 574802.51'
 E 2456030.76'
 Elev. 1061.75'

UTILITY COORDINATES

N 574666.12'
 E 2455943.09'
 Elev. 1056.73'

Comments

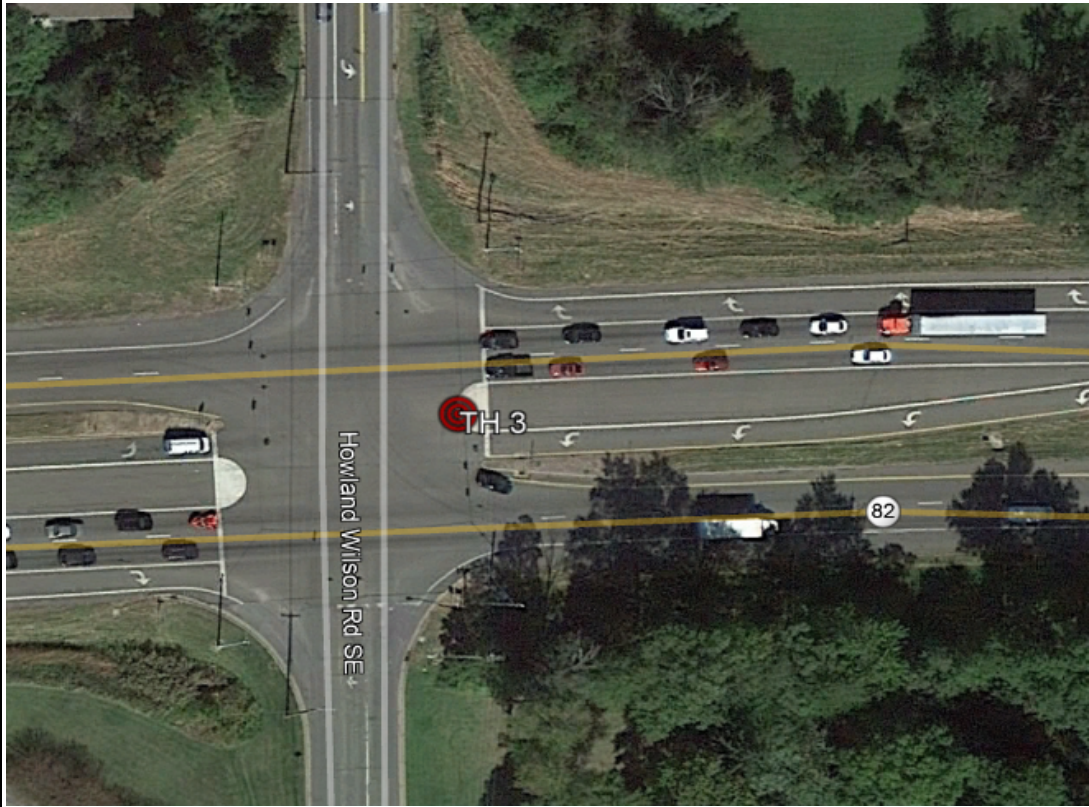
* THE CREW COULD NOT OBTAIN AN ACCURATE O.D. MEASUREMENT OF THE 4" GAS LINE OR O.D. MEASUREMENT OF CASING PIPE DUE TO COPIOUS AMOUNTS OF WATER AND UNSTABLE GROUND CONDITIONS IN THE TEST HOLE.



Surveying And Mapping, LLC (SAM)
 12480 DeBartolo Drive, Unit F
 North Jackson, OH 44451
 Office: 330-794-4455

TEST HOLE 3

Project:	TRUMBULL 82 HOWLAND	Date Performed:	5/19/2021
SAM, LLC Project #	1018047347	Client:	ODOT
Project Location:	SR 82 & HOWLAND WILSON RD	Surface Material & Thickness:	ASPHALT ROADWAY, 18" ASPHALT
Utility Location:	WEST BOUND 82 & HOWLAND WILSON RD	Surface Elevation:	1063.88'
Utility Sta./Offset:	809+69.86, 14.16' LEFT	Surface Condition:	AVERAGE
Record Utility:	12" DUCTILE IRON WATER LINE	Trench Material:	CLAY & WATER
Utility Owner:	TRUMBULL COUNTY SANITARY ENGINEERS	Utility Bedding Material:	UNKNOWN
Contact:	BRANDON RAY	Utility Found:	* 12" DUCTILE IRON WATER LINE
Phone/Email:	(330) 675-7775 / SERAY@CO.TRUMBULL.OH.US	Utility Condition:	GOOD
Field Crew:	PJ REYNOLDS / TRENT WHITE	Utility Depth (Top):	7.35'
Field Conditions:	CLEAR, 80 DEGREES F		



PROJECT CONTROL

CNPT T200

N	574802.51'
E	2456030.76'
Elev.	1061.75'

UTILITY COORDINATES

N	574704.72'
E	2456047.26'
Elev.	1056.53'

Comments

* THE CREW COULD NOT OBTAIN AN ACCURATE O.D. MEASUREMENT OF THE 12" WATER LINE OR O.D. MEASUREMENT OF CASING PIPE DUE TO COPIOUS AMOUNTS OF WATER AND UNSTABLE GROUND CONDITIONS IN THE TEST HOLE.

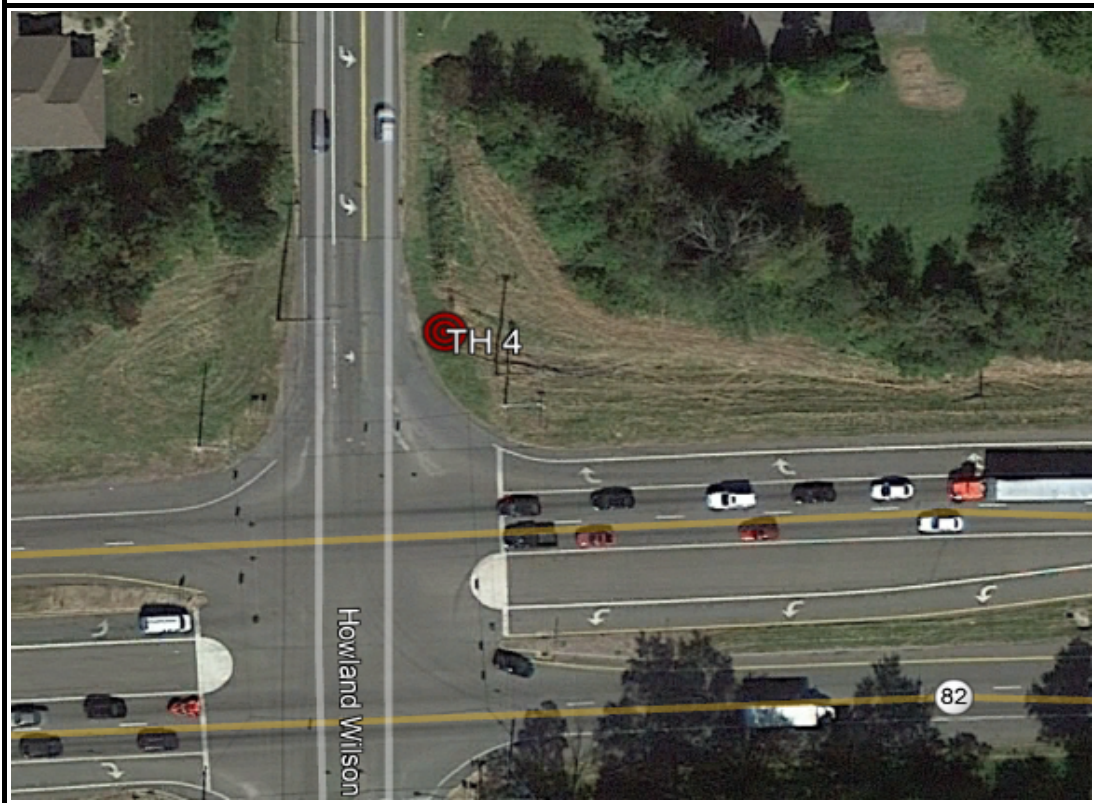


Surveying And Mapping, LLC (SAM)
 12480 DeBartolo Drive, Unit F
 North Jackson, OH 44451
 Office: 330-794-4455

TEST HOLE 4

Project:	TRUMBULL 82 HOWLAND	Date Performed:	5/18/2021
SAM, LLC Project #	1018047347	Client:	ODOT

Project Location:	SR 82 & HOWLAND WILSON RD	Surface Material & Thickness:	GRASS SHOULDER, NATURAL GROUND
Utility Location:	NE CORNER SR 82 & HOWLAND WILSON RD	Surface Elevation:	1060.70'
Utility Sta./Offset:	809+65.14, 118.57' LEFT	Surface Condition:	AVERAGE
Record Utility:	2" STEEL CONDUIT	Trench Material:	CLAY
Utility Owner:	CENTURYLINK	Utility Bedding Material:	UNKNOWN
Contact:	N/A	Utility Found:	* 2.0' WIDE ROUGH Poured CONCRETE TELEPHONE DUCT
Phone/Email:	(303) 260-4929	Utility Condition:	GOOD
Field Crew:	PJ REYNOLDS / TRENT WHITE	Utility Depth (Top):	3.01'
Field Conditions:	CLEAR, 64 DEGREES F		



PROJECT CONTROL

CNPT T200

N	574802.51'
E	2456030.76'
Elev.	1061.75'

UTILITY COORDINATES

N	574808.49'
E	2456034.73'
Elev.	1057.69'

Comments

* CREW COULD NOT DETERMINE IF THE ROUGH Poured CONCRETE IS A SHEATH OR DUCT. ELECTRONIC INFO PUTS THE 2" STEEL CONDUIT 1.4' DIRECTLY BENEATH THE CONCRETE.



Surveying And Mapping, LLC (SAM)
 12480 DeBartolo Drive, Unit F
 North Jackson, OH 44451
 Office: 330-794-4455

TEST HOLE 5

Project:	TRUMBULL 82 HOWLAND	Date Performed:	5/18/2021
SAM, LLC Project #	1018047347	Client:	ODOT

Project Location:	SR 82 & HOWLAND WILSON RD	Surface Material & Thickness:	DRAINAGE DITCH, MUD & ROCK
Utility Location:	NE CORNER SR 82 & HOWLAND WILSON RD	Surface Elevation:	1059.38'
Utility Sta./Offset:	809+68.48, 166.82' LEFT	Surface Condition:	AVERAGE
Record Utility:	12" METALLIC WATER LINE	Trench Material:	CLAY & ROCK
Utility Owner:	TRUMBULL COUNTY SANITARY ENGINEERS	Utility Bedding Material:	UNKNOWN
Contact:	BRANDON RAY	Utility Found:	12" DUCTILE IRON WATER LINE
Phone/Email:	(330) 675-7775 / SERAY@CO.TRUMBULL.OH.US	Utility Condition:	GOOD
Field Crew:	PJ REYNOLDS / TRENT WHITE	Utility Depth (Top):	3.38'
Field Conditions:	CLEAR, 76 DEGREES F		



PROJECT CONTROL

CNPT T200

N	574802.51'
E	2456030.76'
Elev.	1061.75'

UTILITY COORDINATES

N	574856.85'
E	2456034.44'
Elev.	1056.00'

Comments

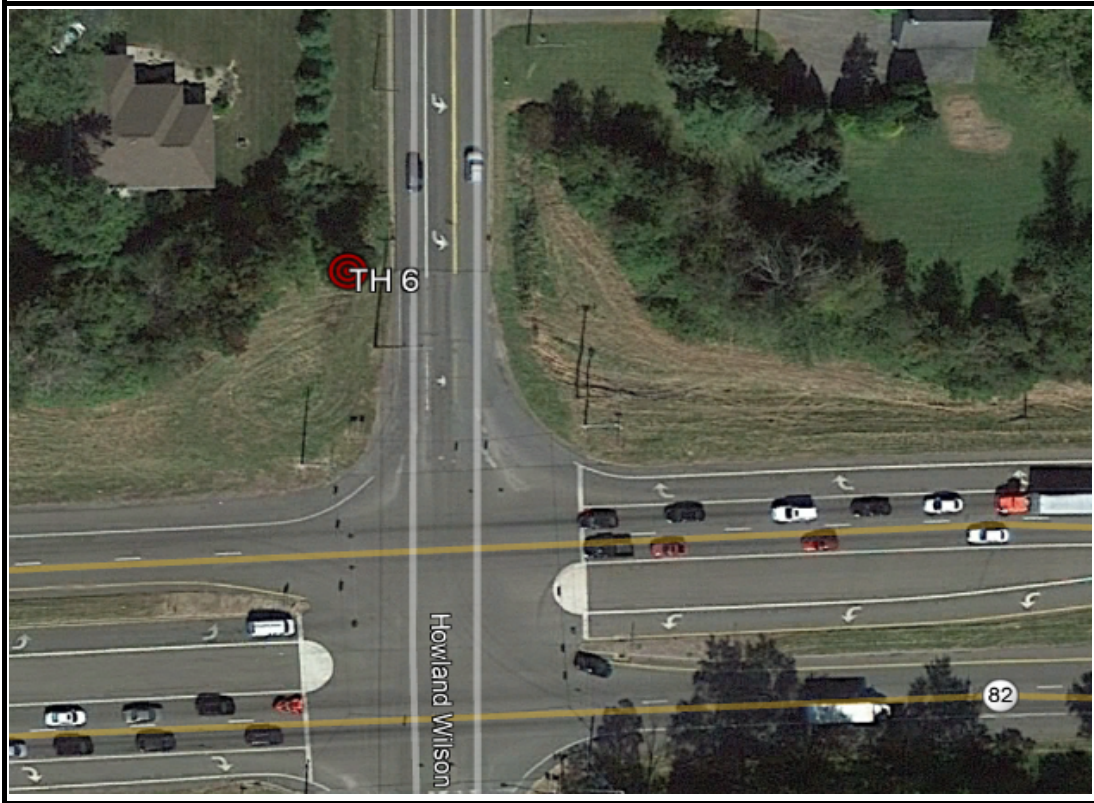


Surveying And Mapping, LLC (SAM)
 12480 DeBartolo Drive, Unit F
 North Jackson, OH 44451
 Office: 330-794-4455

TEST HOLE 6

Project:	TRUMBULL 82 HOWLAND	Date Performed:	5/18/2021
SAM, LLC Project #	1018047347	Client:	ODOT

Project Location:	SR 82 & HOWLAND WILSON RD	Surface Material & Thickness:	GRASS SHOULDER, NATURAL GROUND
Utility Location:	NW CORNER SR 82 & HOWLAND WILSON RD	Surface Elevation:	1060.16'
Utility Sta./Offset:	808+93.83, 160.59' LEFT	Surface Condition:	AVERAGE
Record Utility:	4" STEEL GAS LINE	Trench Material:	CLAY
Utility Owner:	DOMINION ENERGY OHIO	Utility Bedding Material:	UNKNOWN
Contact:	GREGORY TOMPKINS	Utility Found:	4" STEEL GAS LINE
Phone/Email:	(330) 664-2409 / GREGORY.R.TOMPKINS@DOMINIONENERGY.COM	Utility Condition:	GOOD
Field Crew:	PJ REYNOLDS / TRENT WHITE	Utility Depth (Top):	4.76'
Field Conditions:	CLEAR, 78 DEGREES F		



PROJECT CONTROL

CNPT T200

N	574802.51'
E	2456030.76'
Elev.	1061.75'

UTILITY COORDINATES

N	574845.04'
E	2455960.47'
Elev.	1055.40'

Comments