

STATE OF OHIO DEPARTMENT OF HIGHWAYS

DENNISON-CADIZ ROAD S.H.370 SEC. D, F, & S (P+)

TUSCARAWAS & HARRISON COUNTIES UNION & MONROE TOWNSHIPS

CONVENTIONAL SIGNS

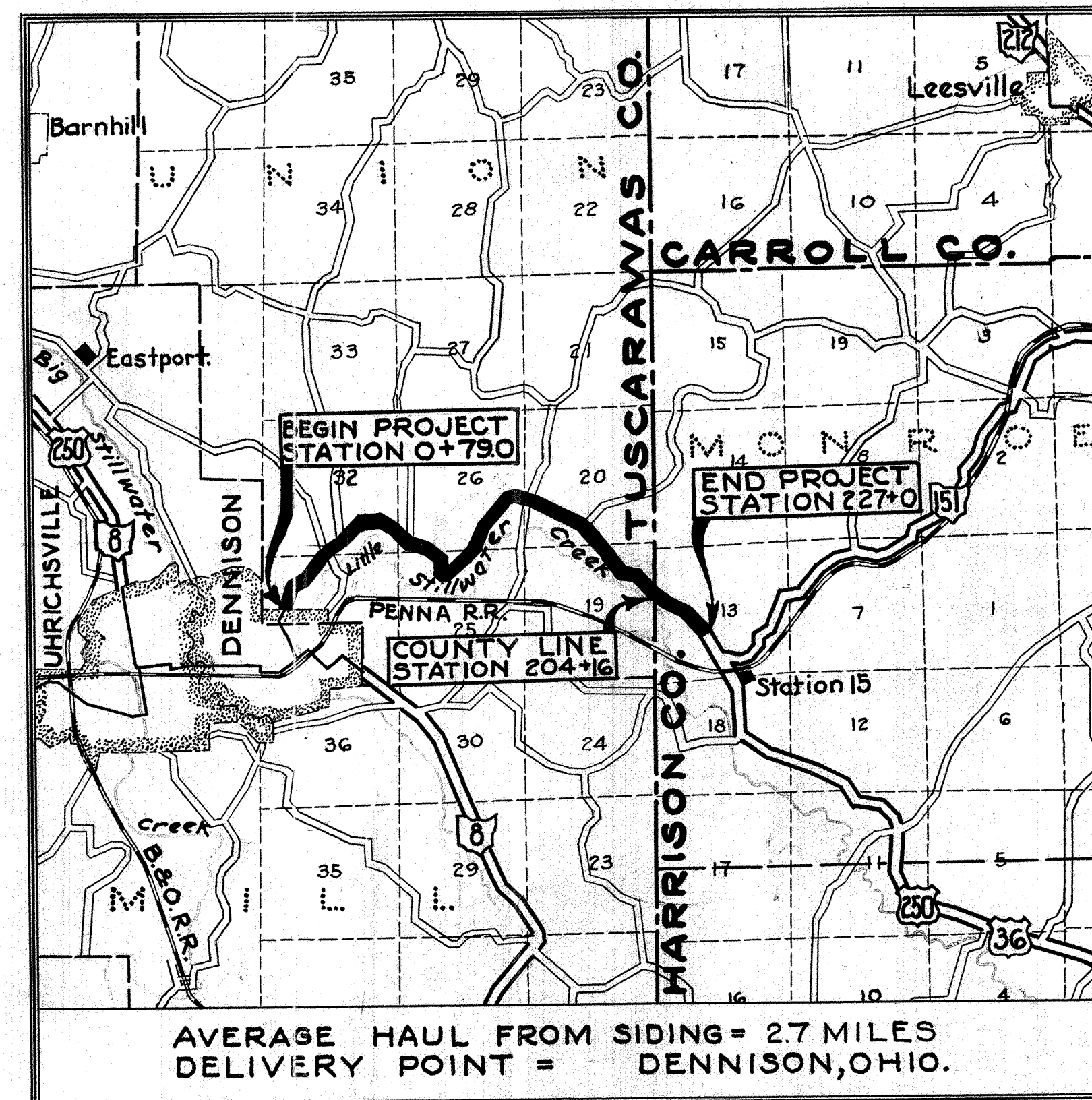
COUNTY LINE	-----
TOWNSHIP LINE	-----
SECTION LINE	-----
CORPORATION LINE	-----
PROPERTY LINE	-----
FENCE LINE	-x-x-x-
CENTER LINE	-o-o-o-
STEAM RAILROAD	-----
POLE LINE	-----
	⌀ (Telephone) ⌀ Power

INDEX OF SHEETS

TITLE SHEET	-----	SHEET	1
TYPICAL SECTION	-----	"	2
PLAN & PROFILE	-----	"	3-10
SUMMARY	-----	"	2

LINE DATA

BEGIN PROJECT STA. 0+79
 COUNTY LINE STA. 204+16
 NET LENGTH IN TUSCARAWAS CO.-20,337 LIN.FT.
 END OF PROJECT STA. 227+00
 NET LENGTH IN HARRISON CO. 2,284 LIN.FT.
 TOTAL LENGTH OF PROJECT 22,621 LIN.FT. or 4.284 MI.



LOCATION PLAN

Scale 1"=1 Mile

PORTION TO BE IMPROVED
 STATE HIGHWAYS
 OTHER ROADS
 DETOURS

SCALES

PLAN 1" = 100'
 PROFILE HORIZONTAL 1" = 100'
 PROFILE VERTICAL 1" = 10'

The Standard Specifications of the State of Ohio, Department of Highways, including changes and Supplemental Specifications listed in the proposal shall govern this improvement.

I hereby approve these plans and declare that the making of this improvement will not require the closing to traffic of the highway, and that traffic will be maintained as provided in these plans and estimates.

The right of way necessary for this improvement will be provided by the State of Ohio.

Approved Harry F. Brown
 Date 2-9-43 Resident Deputy Director.

Approved E. R. McCullough
 Date 3-13-43 Division Deputy Director.

Approved _____
 Date _____ Chief Engineer, Bureau of Maintenance.

Approved _____
 Date _____ Chief Engineer, Bureau of Bridges & R.R. Crossings.

Approved Murray D. Sheffer
 Date 3-12-43 Chief Engineer, Bureau of Location & Right of Way

Approved W. J. Boque
 Date 3-12-43 First Asst. Director & Chief Engineer.

Approved W. A. Tom
 Date 3-12-43 Director of Highways.

CONSTRUCTION BUREAU
 NOV 21 1956
 GROUND PHOTOLAB

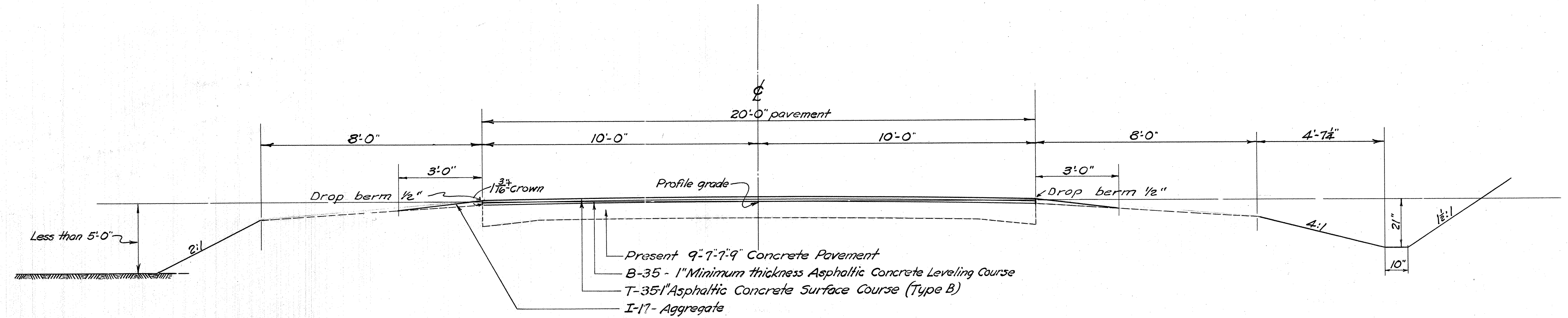
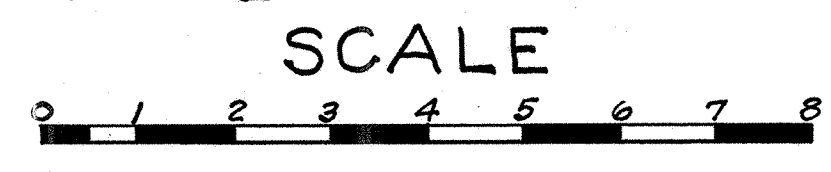
STANDARD DRAWINGS	
G-7.07	G-1-42

SUPPLEMENTAL SPECIFICATIONS
None

FILE No TUSCARAWAS & HARRISON COUNTIES
 S.H.370 SEC'S D, F, & S (P+)
 DATE OF LETTING 194
 CONTRACT No

TUSCARAWAS COUNTY
 S.H. 370, SECS. "D&F"
 HARRISON COUNTY
 S.H. 370, SEC. "S (Part)"

TYPICAL SECTION TYPE T-35



SECTION APPLIES FROM STATION 0+79 TO STATION 227+00

- GENERAL NOTES -

TRAFFIC - Traffic shall be maintained at all times to the satisfaction of the Director. The item of "Maintaining Traffic" shall include furnishing lights, signs, barricades and watchmen necessary to secure the unimpeded flow of traffic twenty-four (24) hours daily.

PROFILE - The profile of the proposed surface course shall be approximately two (2) inches above that of the existing pavement.

LEVELING COURSE - Major depressions shall be removed by placing and compacting Asphaltic Concrete Leveling Course Material B-35 by hand methods prior to placing the 1" Minimum Thickness Asphaltic Concrete Leveling Course. The maximum thickness of the Leveling Material placed in one operation shall not exceed 3" compacted depth.

PRIME COAT - Bituminous Prime Coat, Federal Specification SS-A-674 with Amend. I, Type II shall be applied by distributor or by brooms at the rate of 0.15 gallon per square yard. After the bituminous material has been applied, all material not required to give a uniform coating to the surface shall be swept into all cracks and open joints before the sand cover is placed. (Payment for sand cover is included in price bid per gallon for bituminous material.) Sand cover shall be uniformly spread at the rate of two to five pounds per square yard at such time and shall be in such condition as to adhere to the bituminous material.

LEVELING COURSE - Wherever the depth of the leveling course exceeds 2 inches, the leveling material below the minimum thickness specified on the plan shall be spread and compacted in one or more courses. No course shall exceed three inches in depth when compacted.

PAVEMENT CALCULATIONS

LENGTH OF PROJECT 22.621 LIN. FEET OR 4.284 MILES

ITEM T-30 BITUMINOUS MATERIAL FOR PRIME COAT (0.15 g. sq. yd.)
 $(22.621 \times 20) \div 9 = 50,268.89$ sq. yds.
 Extra Pavement for Bridges 338.65 " "
 TOTAL 50,607.54 " "
 TOTAL T-30 = $50,607.54 \times 0.15 = 7,591$ gallons

ITEM B-35 EXTRA LEVELING FOR FILLING DEPRESSIONS
 (Estimated at 100 cu. yds. per mile)
 $4.284 \times 100 = 428.4$ cu. yds.

ITEM B-35 1" MIN. DEPTH ASPHALTIC CONCRETE LEVELING COURSE
 $(22.621 \times 20) \div 9 = 50,268.89$ sq. yds.
 Extra Pavement for Bridges 338.65 " "
 TOTAL 50,607.54 " "
 $50,607.54 \div 36 = 1,405.8$ cu. yds.
 TOTAL B-35 1,834.2 " "

ITEM T-35 ASPHALTIC CONCRETE SURFACE COURSE (TYPE B)
 $(22.621 \times 20) \div 9 = 50,268.89$ sq. yds.
 Extra Pavement for Bridges 338.65 " "
 TOTAL 50,607.54 " "
 TOTAL T-35 $(50,607.54 \div 36) = 1,405.8$ cu. yds.

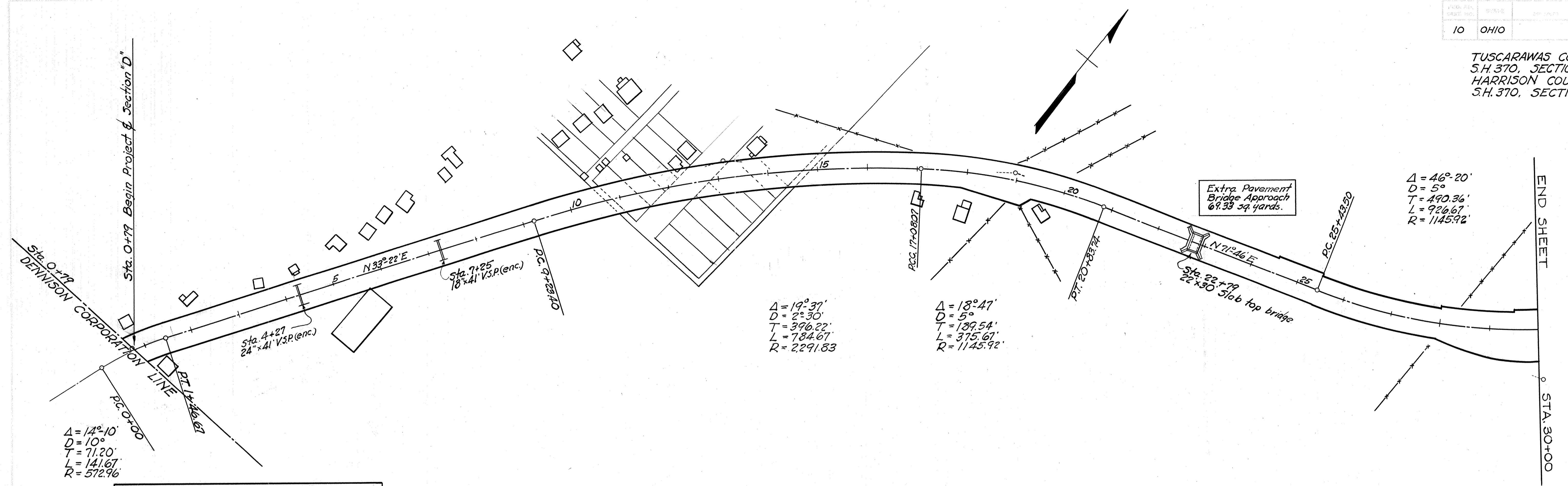
I-17 CALCULATIONS

ITEM I-17 AGGREGATE for berms.
 $\frac{22.621 \times 2 \times (3 \times .25 \div 2)}{27} = 628.4$ cu. yds.
 (Use 630)

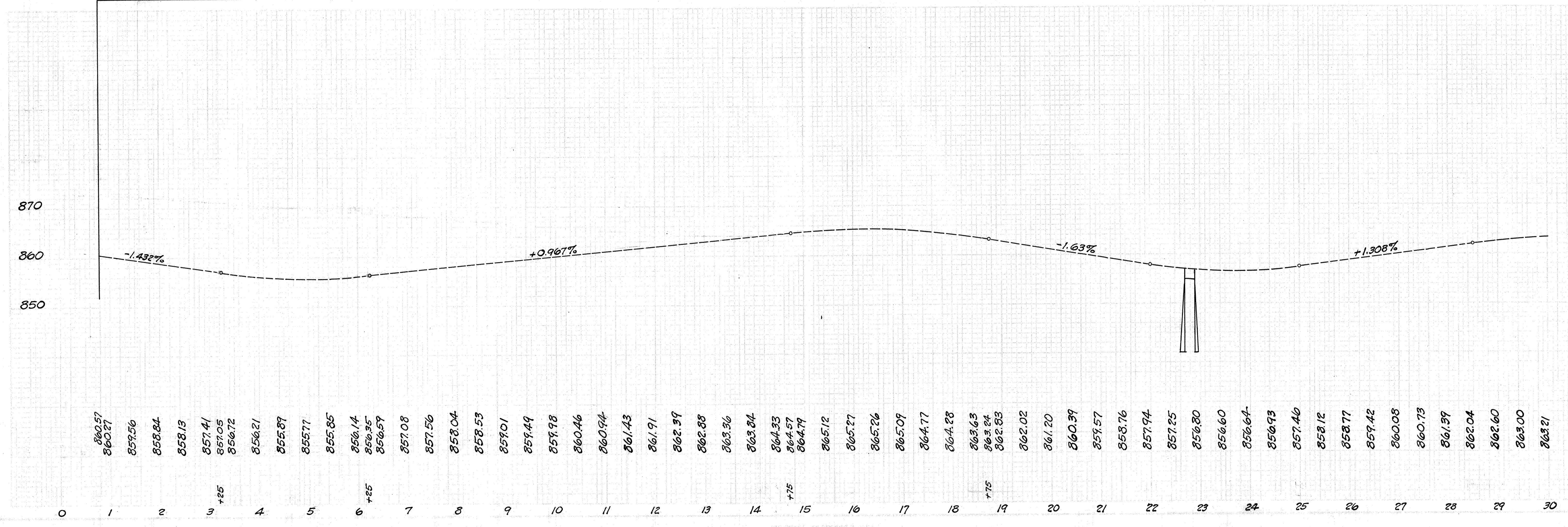
SUMMARY OF QUANTITIES

ITEM	QUANTITY	UNIT	DESCRIPTION
T-30	7,591	Gallons	Bituminous Prime Coat, Federal Specification SS-A-674 with Amend. I, Type II, ^{incl.} ₂₅₅₇₈
B-35	1,834	Cu. Yds.	Asphaltic Concrete Leveling Course
T-35	1,406	Cu. Yds.	Asphaltic Concrete Surface Course (Type B)
I-17	630	Cu. Yds.	Traffic bound material for Berms
LUMP SUM			Maintaining Traffic, including lights, signs, barricades, and Watchmen, Twenty-four (24) hours daily

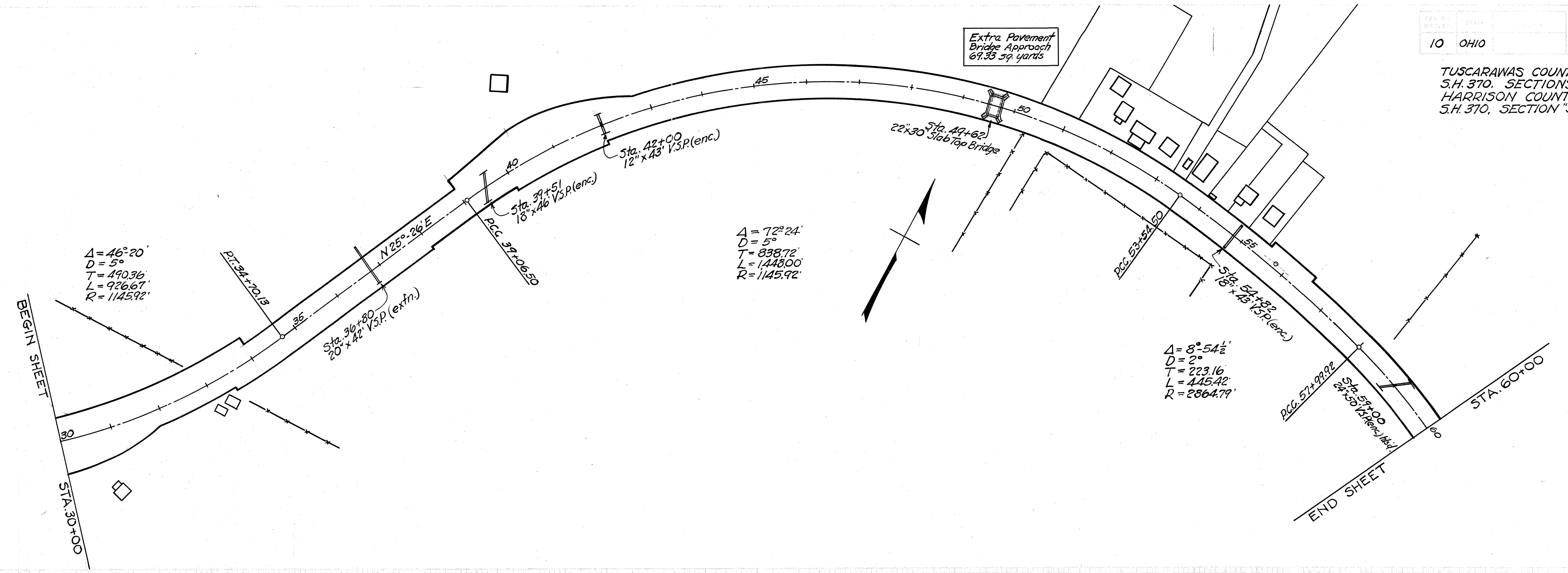
TUSCARAWAS COUNTY
S.H. 370, SECTIONS "D & F"
HARRISON COUNTY
S.H. 370, SECTION "S (PART)"



**BEGIN PROJECT AND SECTION "D"
STATION 0+79**



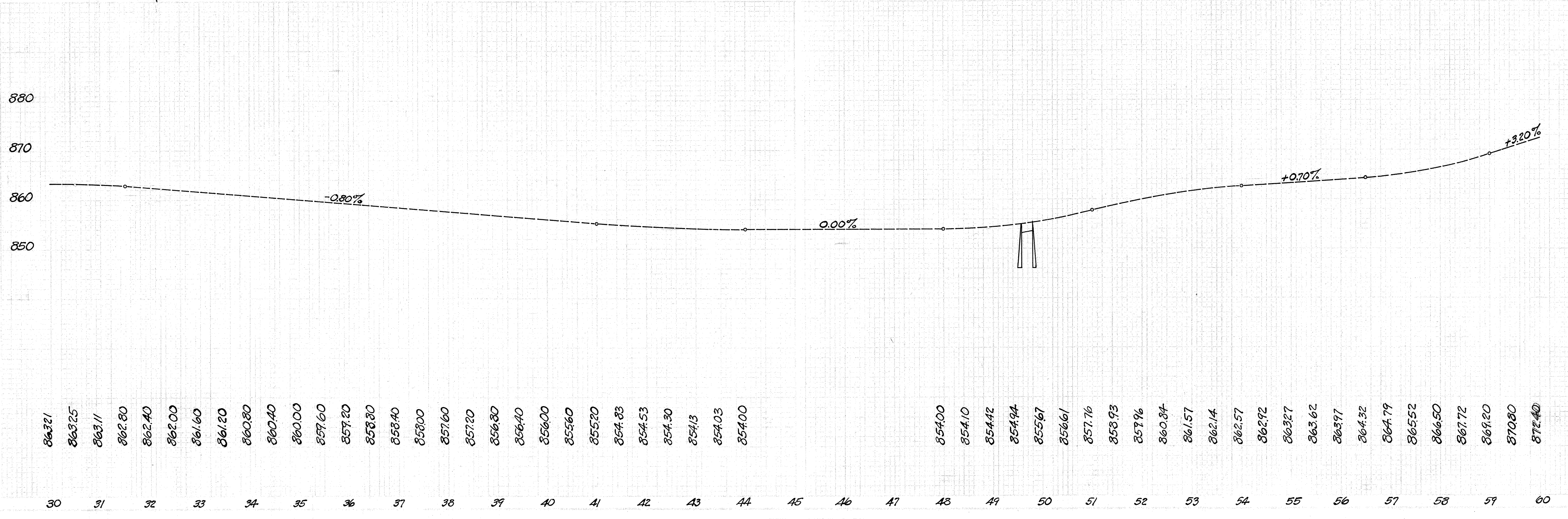
TUSCARAWAS COUNTY
S.H. 370, SECTIONS "D&F"
HARRISON COUNTY
S.H. 370, SECTION "S (PART)"



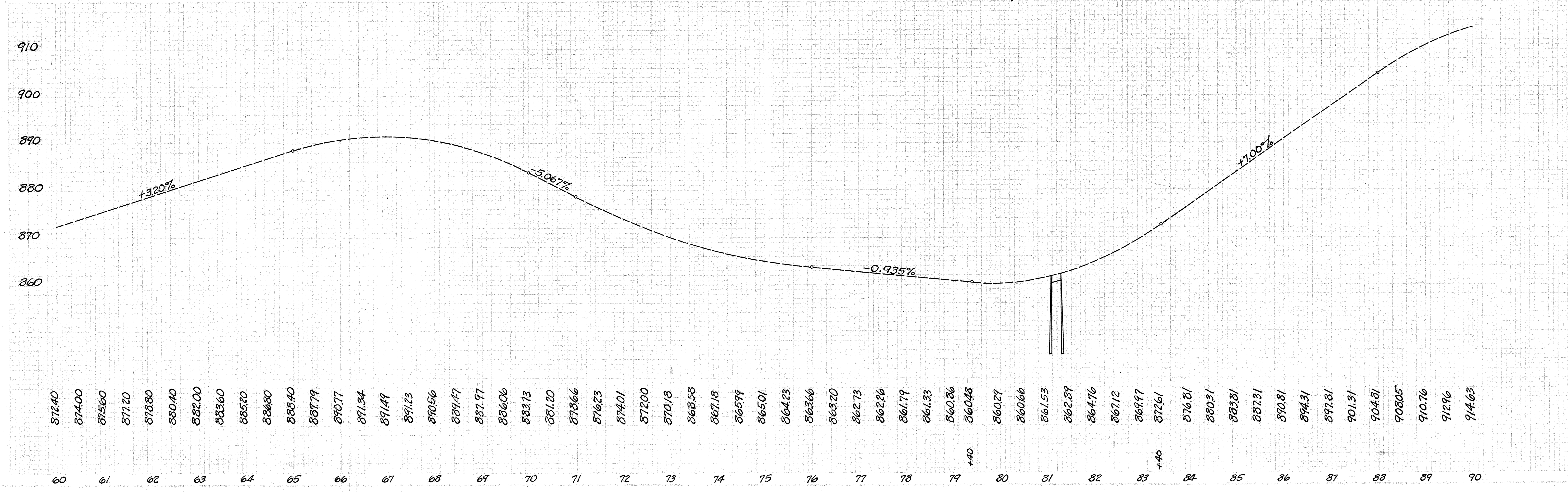
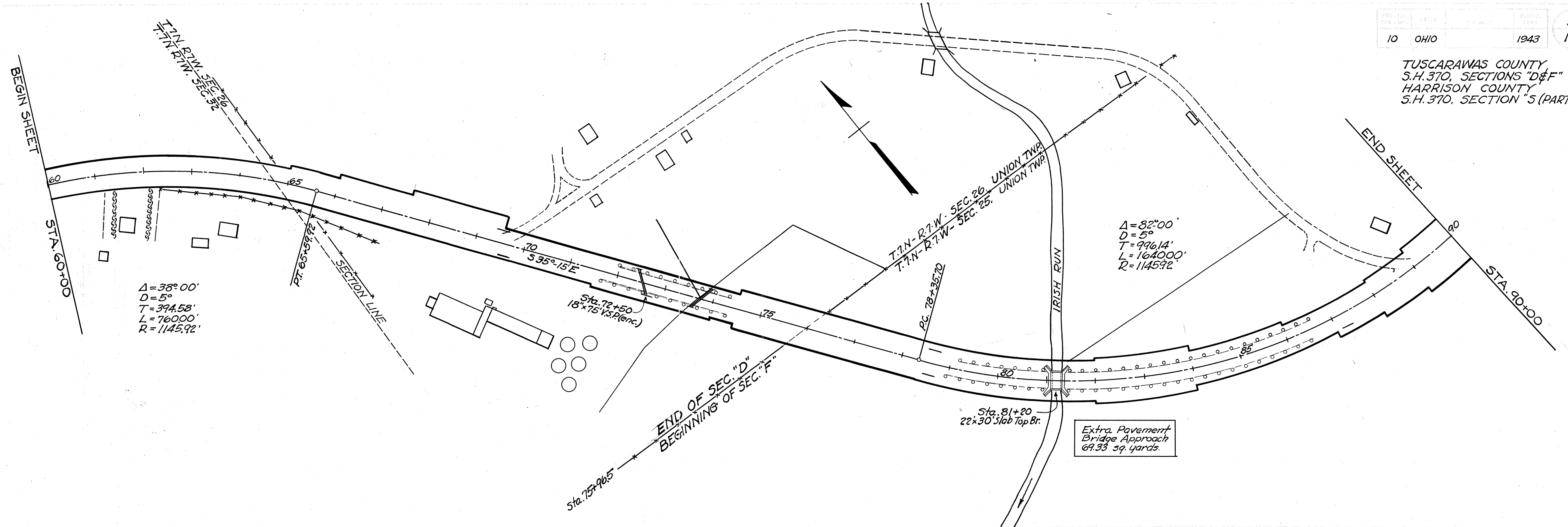
$\Delta = 46^{\circ}20'$
 $D = 5^{\circ}$
 $T = 490.36'$
 $L = 926.67'$
 $R = 1145.92'$

$\Delta = 72^{\circ}24'$
 $D = 5^{\circ}$
 $T = 838.72'$
 $L = 1448.00'$
 $R = 1145.92'$

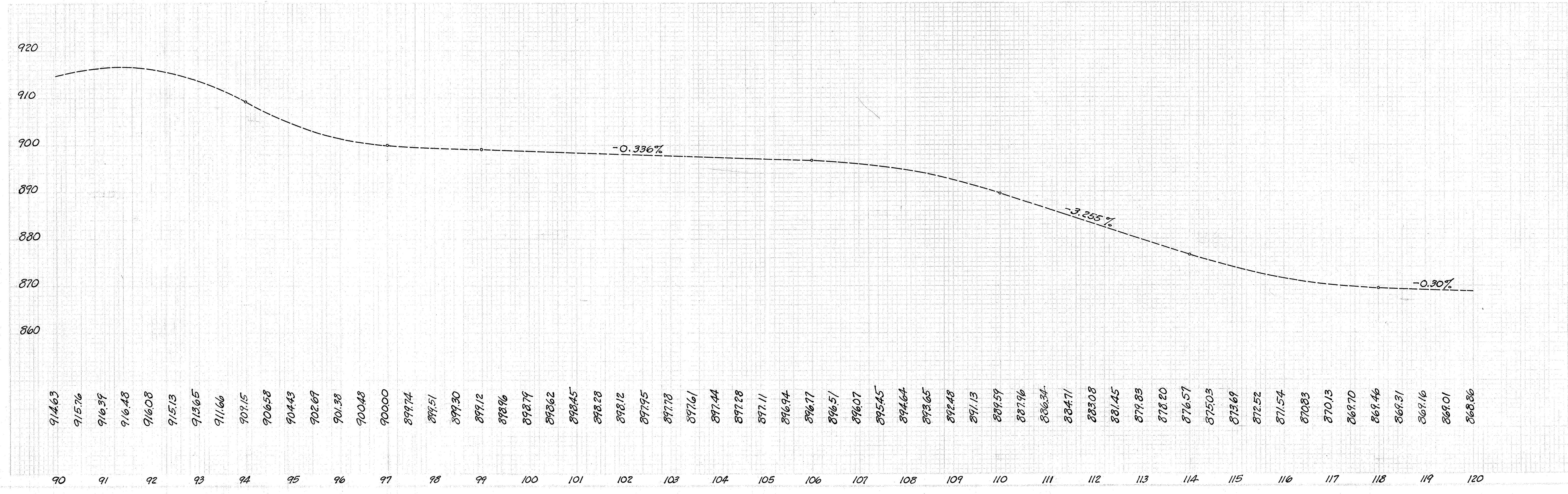
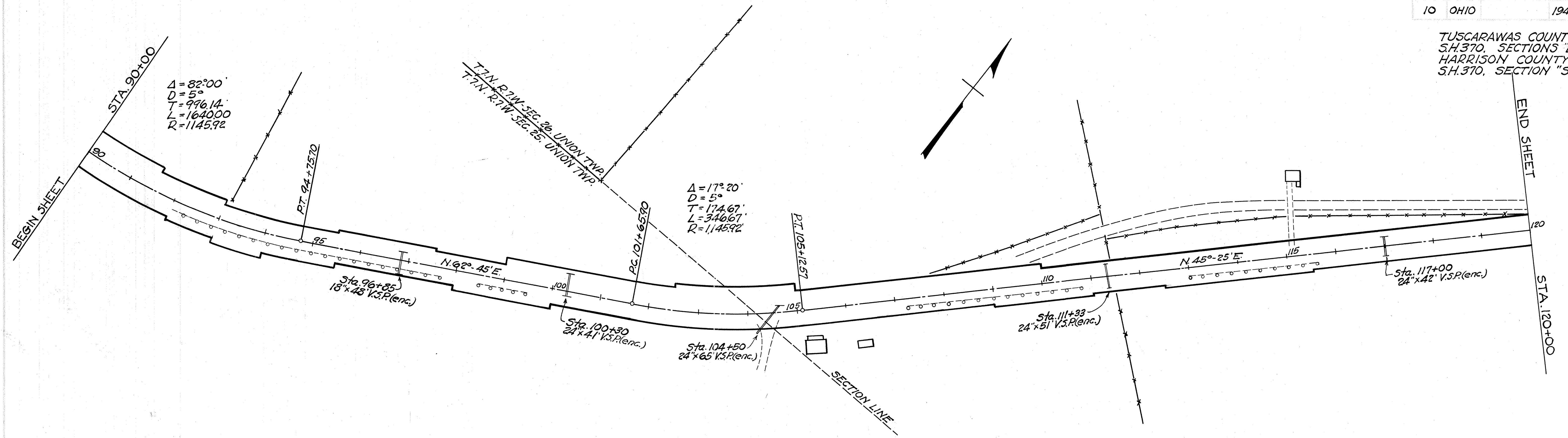
$\Delta = 8^{\circ}54\frac{1}{2}'$
 $D = 2^{\circ}$
 $T = 223.16'$
 $L = 445.42'$
 $R = 2864.79'$



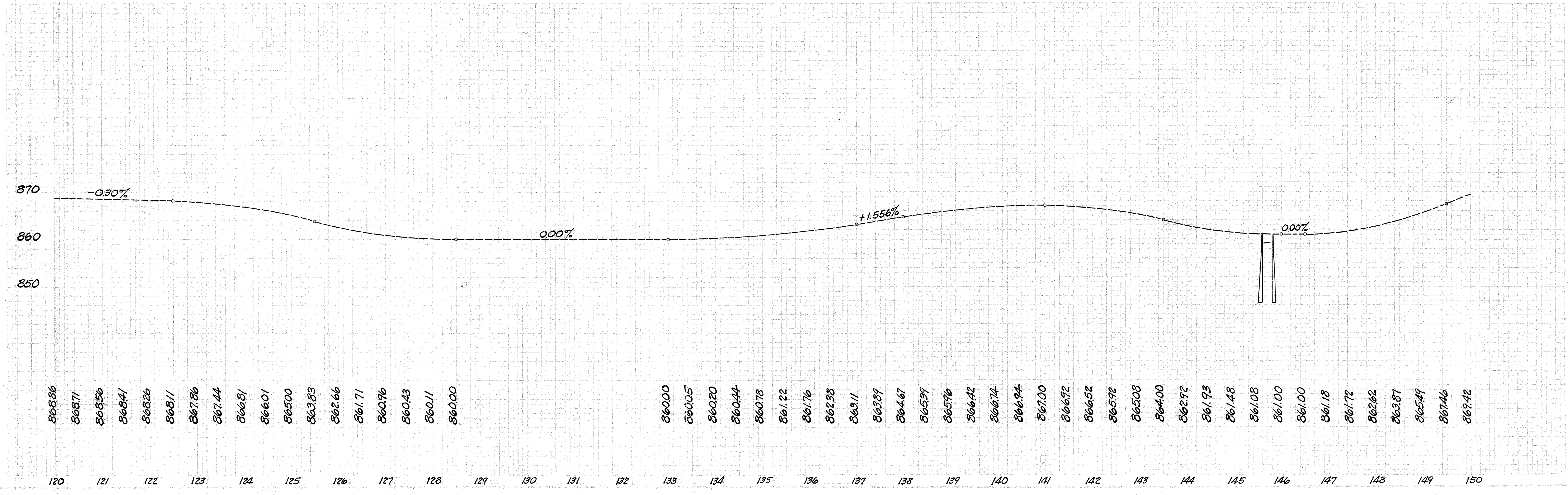
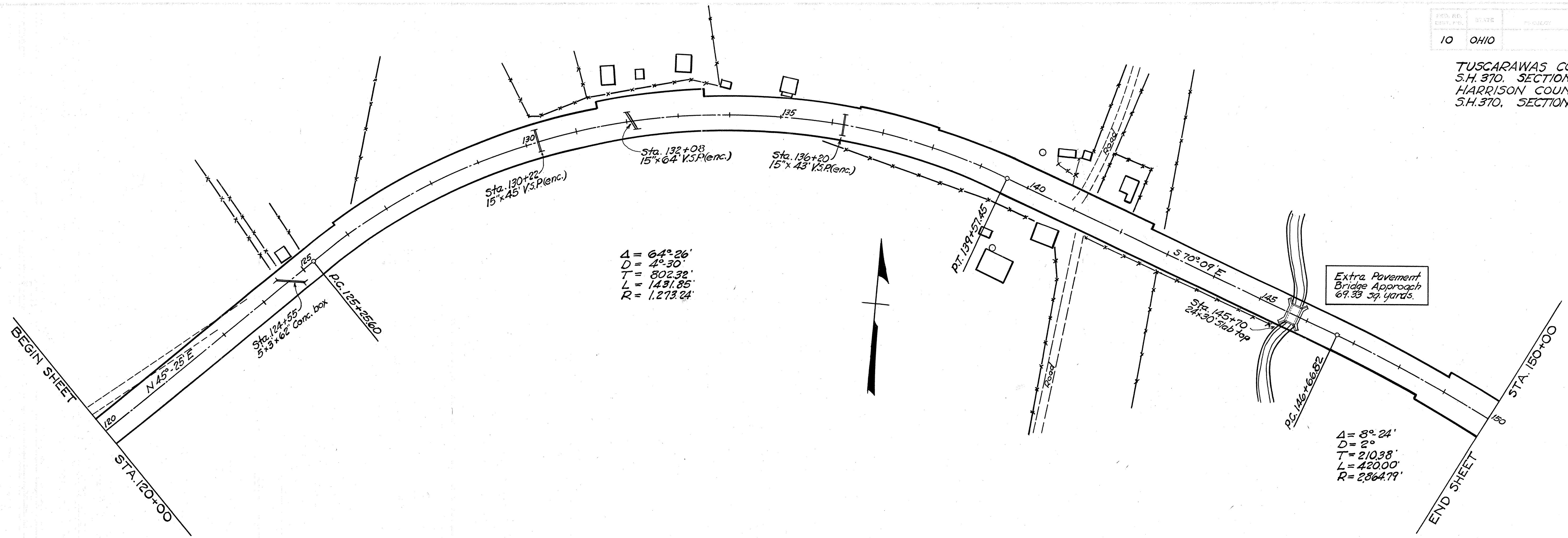
TUSCARAWAS COUNTY,
S.H. 370, SECTIONS "D" & "F"
HARRISON COUNTY,
S.H. 370, SECTION "5 (PART)"



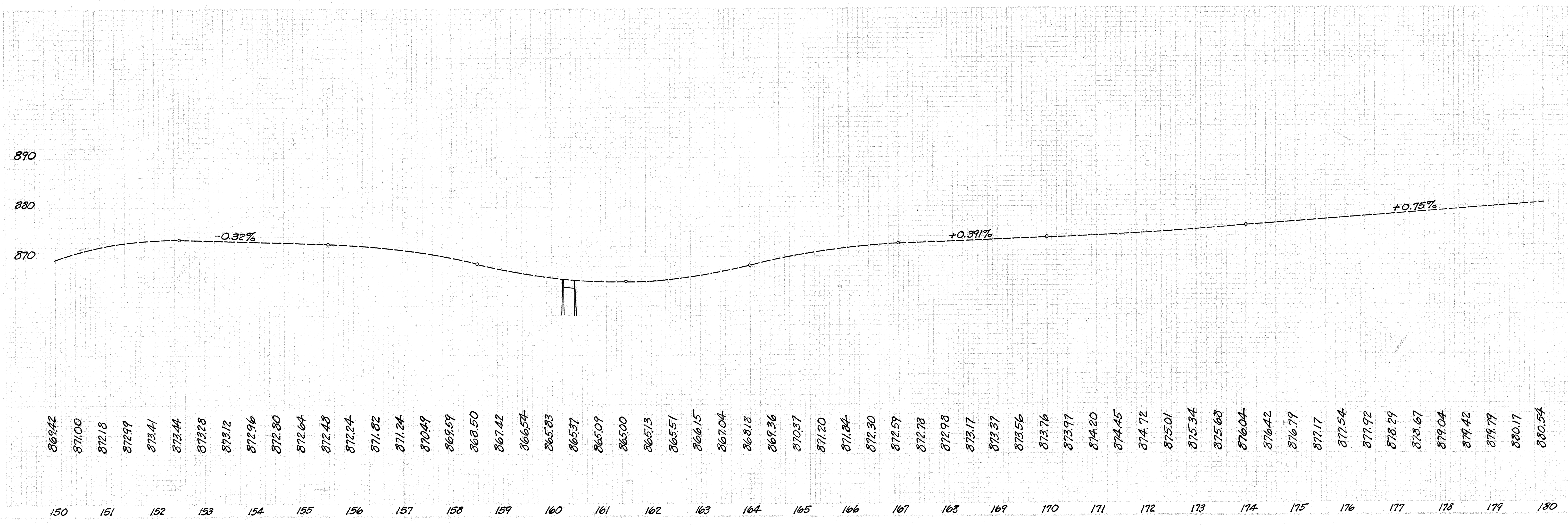
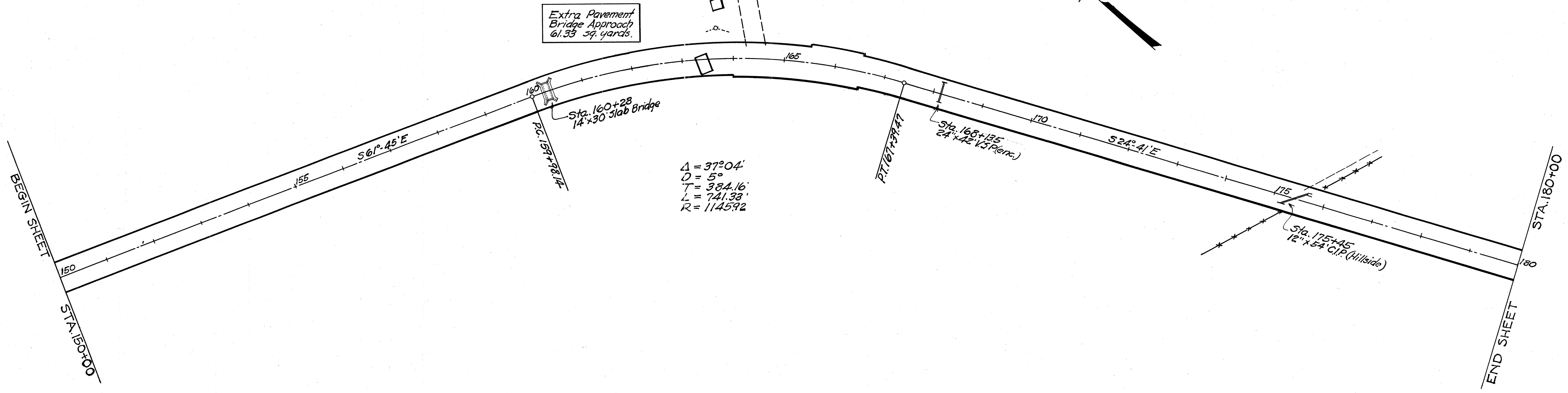
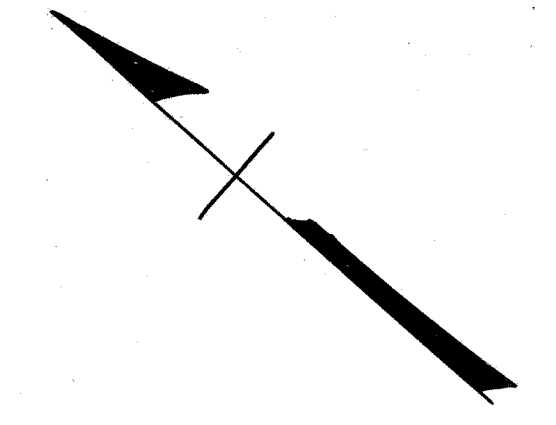
TUSCARAWAS COUNTY
 S.H. 370, SECTIONS "D & F"
 HARRISON COUNTY
 S.H. 370, SECTION "S (PART)"



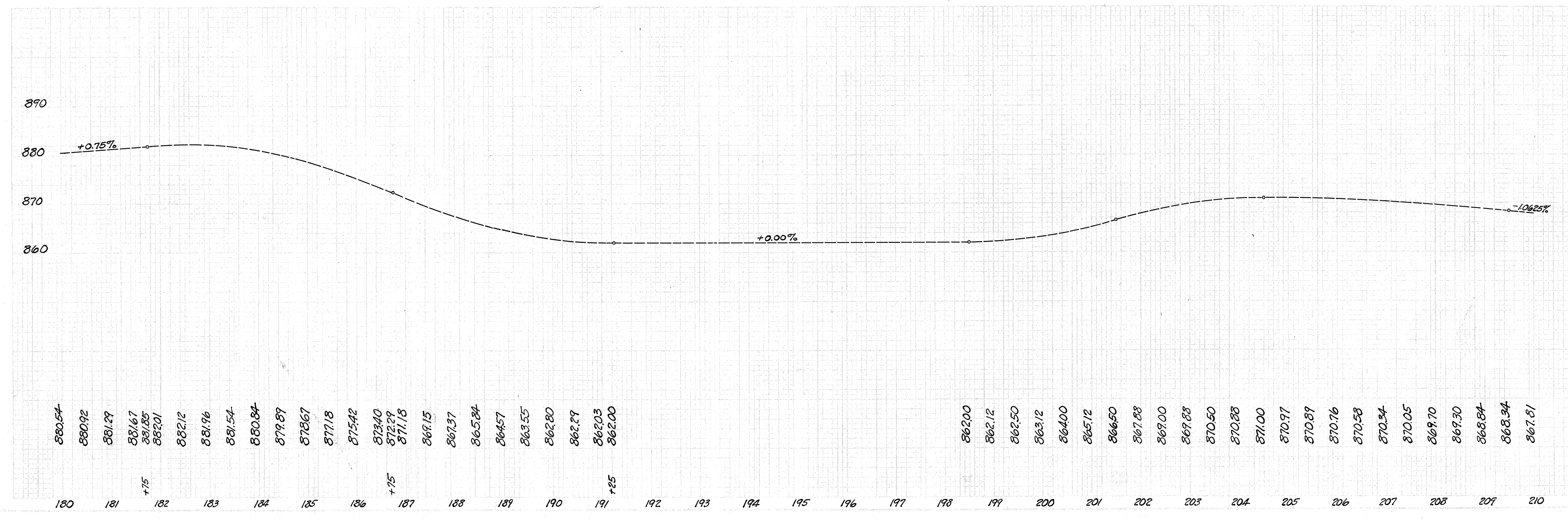
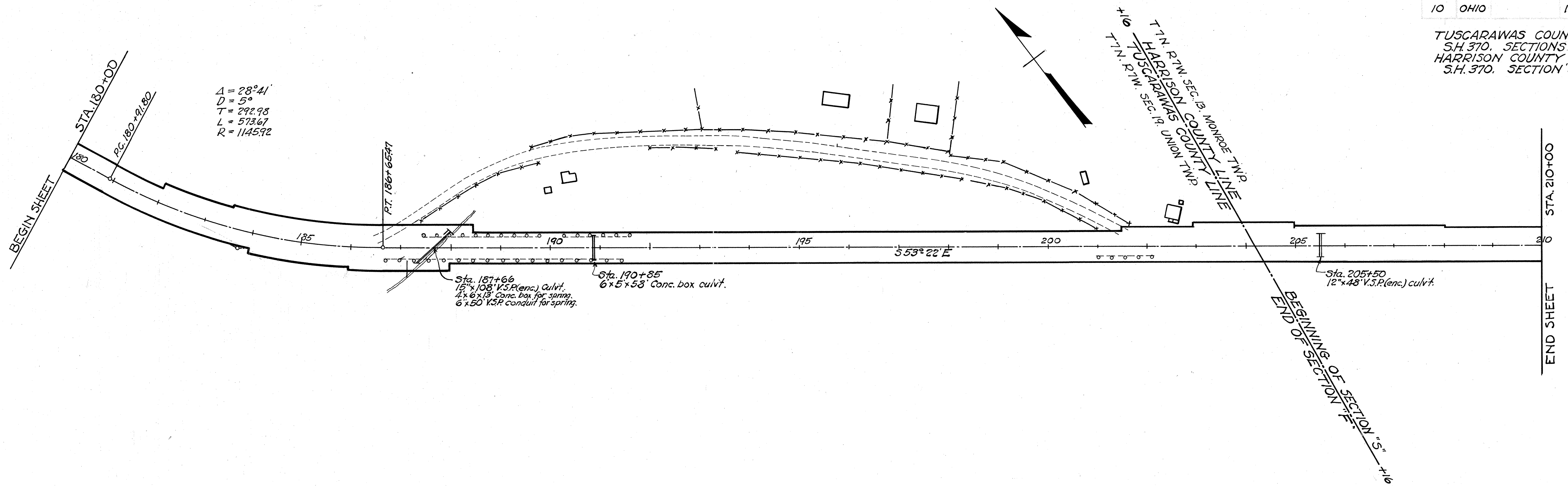
TUSCARAWAS COUNTY
 S.H. 370, SECTION'S "D&F"
 HARRISON COUNTY
 S.H. 370, SECTION "S (PART)"



TUSCARAWAS COUNTY
 S.H. 370, SECTIONS "D&F"
 HARRISON COUNTY
 S.H. 370, SECTION "S(PART)"



TUSCARAWAS COUNTY
 S.H. 370, SECTIONS "D & F"
 HARRISON COUNTY
 S.H. 370, SECTION "S (Part)"



TUSCARAWAS COUNTY
 S.H. 370, SECTIONS "D & F"
 HARRISON COUNTY
 S.H. 370, SECTION "S" (PART)

