

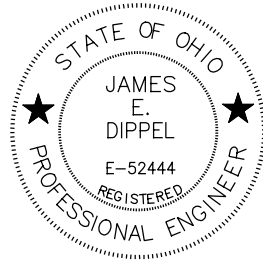

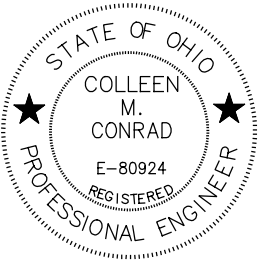
APPROVED *Paul C. Hummitz*
 DATE 9.27.2021 DIRECTOR OF ENGINEERING/
 CITY ENGINEER
 CITY OF DUBLIN, OHIO

APPROVED *Jeff Staud*
 DATE 9/30/2021 UNION COUNTY ENGINEER

APPROVED *Kyle Hoynig*
 DATE 9/28/21 CITY ENGINEER
 CITY OF MARYSVILLE, OHIO

D APPROVED *Ann Leisner*
 DATE 3-7-2022 ADMINISTRATOR, DIRECTOR, DPU
 DIVISION OF WATER
 CITY OF COLUMBUS, OHIO

APPROVED *Danella Petroni*
 DATE 3/7/22 DIRECTOR, ADMINISTRATOR
 DEPARTMENT OF PUBLIC UTILITIES
 CITY OF COLUMBUS, OHIO

ENGINEERS SEAL:	ENGINEERS SEAL:	ENGINEERS SEAL:
FOR ENTIRE PLANS EXCEPT STRUCTURES AND LIGHTING	FOR STRUCTURES OVER AND UNDER 20 FOOT	FOR LIGHTING
		
SIGNED: <u><i>James E. Dippel</i></u> DATE: <u>8/24/21</u>	SIGNED: <u><i>John Crawford Shanks Jr.</i></u> DATE: <u>8/25/21</u>	SIGNED: <u><i>Colleen M. Conrad</i></u> DATE: <u>8/25/21</u>

NO.	DESCRIPTION	REV. BY	DATE
D	SIGNATURES	ENR	3-7-2022

P:\PR418060aa\fra\80748\roadway\sheet\GC003.dgn

SHEET NUM.									PART.		ITEM	ITEM EXT	GRAND TOTAL	UNIT	DESCRIPTION	SEE SHEET NO.
48	109	110	111	108	122	585	601	37	01/NHS/PV	02/S>2/PV						
					1					1	611	99851	1	EACH	WATER QUALITY BASIN, RETENTION, AS PER PLAN	582
															PAVEMENT	
	4,635								4,635	254	01000	4,635	SY	PAVEMENT PLANING, ASPHALT CONCRETE, 1.5"		
	47,759								46,451	1,308	254	01000	47,759	SY	PAVEMENT PLANING, ASPHALT CONCRETE, VARIABLE DEPTH	
	697									697	301	46000	697	CY	ASPHALT CONCRETE BASE, PG64-22	
	19,404								12,226	7,178	302	46000	19,404	CY	ASPHALT CONCRETE BASE, PG64-22	
	12,869	3,539							12,626	6,058	304	20000	18,684	CY	AGGREGATE BASE	
	16,436								12,626	238	305	16010	238	SY	12" CONCRETE BASE, CLASS QC IP	
	155								12,693	3,743	407	20000	16,436	GAL	NON-TRACKING TACK COAT	
										155	441	50101	155	CY	ASPHALT CONCRETE SURFACE COURSE, TYPE 1, (448), AS PER PLAN	9
	9,333								6,606	2,727	442	00100	9,333	CY	ANTI-SEGREGATION EQUIPMENT	
	5,056								3,550	1,506	442	10001	5,056	CY	ASPHALT CONCRETE SURFACE COURSE, 12.5 MM, TYPE A (446), AS PER PLAN, PG 70-22M	37
	3,224								1,756	1,468	442	10100	3,224	CY	ASPHALT CONCRETE INTERMEDIATE COURSE, 19 MM, TYPE A (446)	
	2,258								2,258		442	10100	2,258	CY	ASPHALT CONCRETE INTERMEDIATE COURSE, 19 MM, TYPE A (446), 1.75	
		19,498	7,785						27,283		452	14020	27,283	SY	10" NON-REINFORCED CONCRETE PAVEMENT, CLASS QC IP WITH QC/QA	
				6,216					6,216	609	12001	6,216	FT	COMBINATION CURB AND GUTTER, TYPE 2, AS PER PLAN	33	
				169					169	609	18001	169	FT	COMBINATION CURB AND GUTTER, TYPE 3, AS PER PLAN	33	
				926					392	534	609	24510	926	FT	CURB, TYPE 4-C	
				209					209	609	26000	209	FT	CURB, TYPE 6		
				5,310					5,310	609	26001	5,310	FT	CURB, TYPE 6, AS PER PLAN	33	
				1,506					1,506	609	71000	1,506	SF	CONCRETE MEDIAN		
				342					342	609	98000	342	FT	CURB, MISC : 18" HEIGHT	33	
									35,000	35,000	872	10000	35,000	FT	VOID REDUCING ASPHALT MEMBRANE (VRAM)	37
															WATER WORK	
						9			9	202	75610	9	EACH	VALVE BOX REMOVED		
						32			32	613	41201	32	CY	LOW STRENGTH MORTAR BACKFILL, AS PER PLAN	586	
						769			769	638	02401	769	FT	12" WATERMAIN DUCTILE IRON PIPE ANSI CLASS 52, PUSH-ON JOINTS AND FITTINGS, AS PER PLAN, (COC 801)*	586	
						160			160	638	03001	160	FT	16" WATER MAIN DUCTILE IRON PIPE ANSI CLASS 52, PUSH-ON JOINTS AND FITTINGS, AS PER PLAN, (COC 801)	593	
						60			60	638	06705	60	FT	20" STEEL PIPE ENCASEMENT, OPEN CUT, AS PER PLAN*	586	
						320			320	638	07305	320	FT	20" STEEL PIPE ENCASEMENT, BORED OR JACKED, AS PER PLAN*	586	
						4			4	638	07501	4	EACH	12" GATE VALVE, AS PER PLAN, (COC 802)*	586	
						2			2	638	09801	2	EACH	12" X 12" TAPPING SLEEVE, VALVE AND VALVE BOX, AS PER PLAN, (COC 803)*	586	
						1			1	638	10201	1	EACH	6" FIRE HYDRANT, AS PER PLAN, (COC 809)*	595	
						1			1	638	10600	1	EACH	FIRE HYDRANT AND GATE VALVE REMOVED AND RESET, (COC 809)		
						9			9	638	10800	9	EACH	VALVE BOX ADJUSTED TO GRADE, (COC 807)		
						1			1	638	13201	1	EACH	1/2" HP RELEASE VALVE, (COC 812)		
						2,350			2,350	SPECIAL	63820414	2,350	FT	2" WATER MAIN POLYVINYL CHLORIDE PIPE AND FITTINGS (WSP 6768)	601	
						1			1	SPECIAL	63820752	1	EACH	FIRE HYDRANT REMOVED FOR STORAGE, (COC 809)*	586	
						114			114	638	29774	114	FT	1 1/2" WATER TUBING, TYPE K SOFT COPPER (COLS. CMS ITEM 805.03), A.P.P. (WSP 6768)	601	
						1			1	SPECIAL	63898000	1	EACH	1 1/2" WATER SERVICE TAP, COMPLETE (COLS. CMS ITEM 805) (WSP 6768)	601	
						8			8	SPECIAL	63898000	8	EACH	QUICK COUPLER VALVE, 1" BRASS, 2-PIECE, WITH BOX (10" ROUND) (WSP 6768)	601	
						1			1	SPECIAL	63898100	1	LUMP	1 1/2" METER SETTING WITH BACK FLOW PREVENTER IN HEATED ENCLOSURE (WSP 6768)	601	
															*INDICATES CITY OF MARYSVILLE SYSTEM ONLY	

GENERAL SUMMARY

UNI-33-24.87

93
923

NO.	DESCRIPTION	REV. BY	DATE
A	QUANTITY REVISIONS	ENR	2-3-2022
B	ADDED ITEM	ENR	2-28-2022
C	REMOVED ITEM	ENR	3-3-2022
D	REMOVED ITEMS	ENR	3-5-2022

CITY OF COLUMBUS WATER SERVICE PLAN NOTES

NO WATER SERVICE CONSTRUCTION, BEFORE OR AFTER THE WATER METER(S), SHALL BEGIN PRIOR TO FEE PAYMENT TO THE UTILITY PERMITS OFFICE AT 111 N. FRONT STREET (614-645-7330).

THE CITY OF COLUMBUS, CONSTRUCTION AND MATERIAL SPECIFICATIONS (CMSC), 2018 EDITION AND ALL REVISIONS, INCLUDING SPECIAL PROVISIONS AND SUPPLEMENTAL SPECIFICATIONS SHALL GOVERN THIS IMPROVEMENT, UNLESS OTHERWISE NOTED.

ALL WATER LINE MATERIALS AND INSTALLATIONS SHALL BE IN ACCORDANCE WITH THE CURRENT APPROVED MATERIALS LIST AND RULES AND REGULATIONS OF THE CITY OF COLUMBUS, DIVISION OF WATER, UNLESS OTHERWISE SHOWN ON THE PLANS OR APPROVED BY THE CITY OF COLUMBUS DIVISION OF WATER. ONLY PRODUCTS LISTED ON THE CURRENT APPROVED MATERIALS LIST WILL BE PERMITTED TO BE INSTALLED.

IT SHALL BE UNLAWFUL FOR ANY PERSON TO PERFORM ANY WORK ON THE PUBLIC WATER DISTRIBUTION SYSTEM WITHOUT FIRST SECURING LICENSE TO ENGAGE IN SUCH WORK, AS INDICATED IN COLUMBUS CITY CODE SECTION 1103.02 AND 1103.06. THIS WORK INCLUDES ANY ATTACHMENTS, ADDITIONS TO OR ALTERATIONS IN ANY CITY SERVICE PIPE OR APPURTENANCES (INCLUDING WATER SERVICES AND TAPS). THIS REQUIREMENT MAY BE MET BY UTILIZATION OF A SUBCONTRACTOR WHO HOLDS A CITY OF COLUMBUS WATER CONTRACTOR LICENSE OR A COMBINED WATER/SEWER CONTRACTOR LICENSE TO PERFORM THIS WORK. UTILIZATION OF A SUBCONTRACTOR MUST MEET THE LICENSING REQUIREMENTS OF CITY OF COLUMBUS BUILDING CODE, IN PARTICULAR SECTION 4114.119 AND 4114.529.

FOR ANY EMERGENCIES THAT OCCUR AFTER NORMAL WORKING HOURS INVOLVING THE WATER DISTRIBUTION SYSTEM, PLEASE CONTACT THE DIVISION OF WATER DISTRIBUTION MAINTENANCE OFFICE AT 614-645-7788.

SITE UTILITY CONTRACTOR SHALL OBTAIN A RIGHT OF WAY PERMIT PRIOR TO STARTING ANY SITE WATER SERVICE AND/OR WATER SERVICE TAP INSTALLATION OR PLACEMENT OF ANY WATER SERVICE MATERIALS INTO THE PUBLIC RIGHT OF WAY.

THERE SHALL BE A MINIMUM 10 FOOT HORIZONTAL AND 18 INCH VERTICAL SEPARATION BETWEEN WATER SERVICE TAPS, WATER SERVICES, PRIVATE WATER SYSTEMS AND ANY SANITARY AND/OR STORM SEWER SYSTEMS.

EXISTING RIGHT OF WAY LINE(S), PROPOSED RIGHT OF WAY LINE(S) AND/OR WATER MAIN EASEMENT LINES SHALL BE STAKED AT 10 FOOT INCREMENTS BY A STATE OF OHIO LICENSED SURVEYOR WHEN THE WATER SERVICE TAP(S) AND/OR WATER SERVICE(S) ARE INSTALLED AND INSPECTED BY THE COLUMBUS DIVISION OF WATER.

ALL INSPECTIONS REQUIRE A 24 HOUR ADVANCE NOTICE.

SITE UTILITY CONTRACTOR SHALL FLUSH ALL WATER SERVICES PRIOR TO ANY WATER METER INSTALLATION. THE CITY OF COLUMBUS IS NOT RESPONSIBLE FOR ANY CITY WATER METER DAMAGE CAUSED BY NON-FLUSHING.

SITE UTILITY CONTRACTOR SHALL CALL COLUMBUS DIVISION OF WATER AT 614-645-7330 FOR INSPECTION OF 2" AND SMALLER WATER SERVICE TAPS FROM THE WATER MAIN THRU THE CURB STOP AND WATER SERVICES FROM THE CURB STOP THRU THE WATER METER SETTING.

ALL 2" AND SMALLER WATER SERVICE PIPE SHALL BE TYPE K SOFT TEMPER COPPER ONLY FROM THE CITY WATER MAIN THRU THE CURB STOP PER STANDARD DETAIL DRAWING L-9901 AND SHALL BE TYPE K SOFT TEMPER COPPER OR A DIVISION OF WATER APPROVED POLY TUBING FROM THE CURB STOP THRU THE WATER METER SETTING.

SITE UTILITY CONTRACTOR SHALL CALL COLUMBUS DIVISION OF WATER AT 614-645-8276 TO HAVE 1.5" AND SMALLER METER(S) INSTALLED.

1.5" AND 2" METER SETTING(S) SHALL BE PER COLUMBUS DIVISION OF WATER STANDARD DETAIL DRAWING L-9002 C

BACKFLOW PREVENTION ASSEMBLY(S) SHALL BE INSTALLED, WHERE REQUIRED, PER COLUMBUS DIVISION OF WATER STANDARD DETAIL DRAWINGS L-9002 A-G. CONTRACTOR SHALL CALL 614-645-6674 WITH BACKFLOW PREVENTION INSTALLATION QUESTIONS. CONTRACTOR SHALL CALL 614-645-5781 WITH INSPECTION REQUESTS.

THE DOMESTIC WATER SERVICE BACKFLOW PREVENTER(S) SHALL MEET THE ASSE 1013 APPROVAL/STANDARD, AND SHALL BE SIZED TO MATCH THE CITY WATER METER.

IF DOMESTIC AND/OR FIRE WATER SERVICE METER(S) AND/OR THEIR BACKFLOW PREVENTER(S) ARE TO BE LOCATED INSIDE AN ABOVE GROUND HEATED ENCLOSURE THAT IS ASSE #1060 CLASS 1 APPROVED. THE ENCLOSURE SHALL HAVE A THERMOSTATICALLY OPERATED HEATER. THE HEATER SHALL BE SIZED PER THE ENCLOSURE MANUFACTURERS SPECS TO MAINTAIN A 40 DEGREE FAHRENHEIT INSIDE TEMPERATURE AT AN OUTSIDE TEMPERATURE OF MINUS 30 DEGREE FAHRENHEIT. HEAT TAPE/RODS WILL NOT BE PERMITTED.

BACKFLOW PREVENTION DEVICES MUST BE TESTED AT THE TIME OF INSTALLATION BY A TESTER APPROVED BY THE DIVISION OF WATER BACKFLOW COMPLIANCE OFFICE. A COMPLETE LIST OF APPROVED TESTERS CAN BE FOUND AT WWW.COLUMBUS.GOV/BACKFLOW/CONSUMERS. RESULTS MUST BE SUBMITTED THROUGH THE ONLINE WEB SUBMITTAL SYSTEM AT WWW.COLUMBUS.TOKAYTEST.COM

DELETED



NO.	DESCRIPTION	REV. BY	DATE
D	DELETED SHEET	ENR	3-5-2022

CALCULATED
ENR
CHECKED
JED

WATER SERVICE NOTES - LANDSCAPE IRRIGATION

UNI - 33 - 24.87

596
923



0 20 40
HORIZONTAL
SCALE IN FEET

CALCULATED
MSL
CHECKED
MRT

WATER SERVICE PLAN -
LANDSCAPE IRRIGATION

UNI - 33 - 24.87

597
923

S.R. 161 STA. 53+04.20, 65.80' RT
1 1/2" X 2" REDUCER

S.R. 161 STA. 53+04.20, 80.30' RT
@ STA. 2+01.75
CONNECT TO HEATED ENCLOSURE
SEE SHEET 599 FOR DETAILS

PROPOSED 1 1/2" WATER SERVICE
(TYPE K SOFT COPPER)

EX. STEEL CASING

SEE SHEET 601 FOR IRRIGATION PLAN

S.R. 161 STA. 53+19.00, 172.34' RT
@ STA. 1+08.00
1 1/2" CURB STOP AND BOX

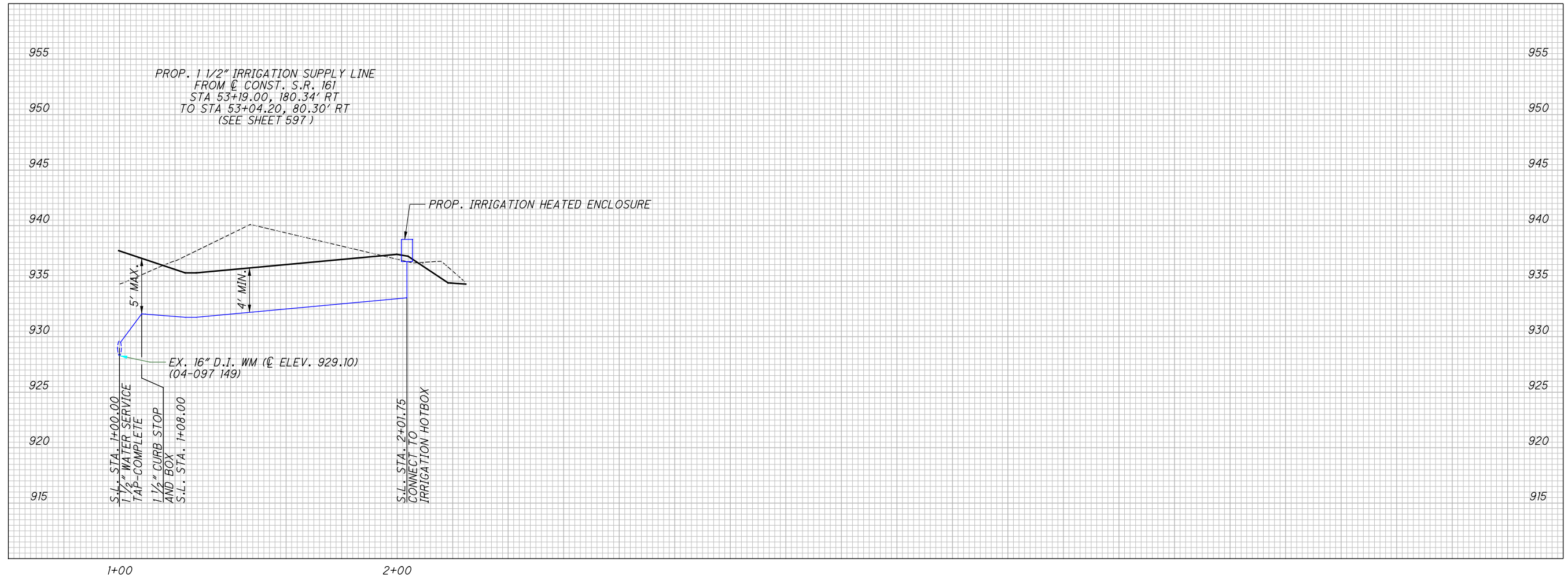
S.R. 161 STA. 53+19.00, 180.34' RT
@ STA. 1+00.00
1 1/2" WATER SERVICE TAP, COMPLETE

EX. STEEL CASING

DELETED

NO.	DESCRIPTION	REV. BY	DATE
D	DELETED SHEET	ENR	3-5-2022

P:\PR55741\FRA\80748\Design\Utilities\Sheets\80748UPI01.dgn Sheet 3/5/2022 4:22:35 PM riley



CALCULATED
ENR
CHECKED
JED

0 20 40
HORIZONTAL
SCALE IN FEET

WATER SERVICE PROFILE
LANDSCAPE IRRIGATION

UNI - 33 - 24.87

DELETED

NO.	DESCRIPTION	REV. BY	DATE
D	DELETED SHEET	ENR	3-5-2022

598
923



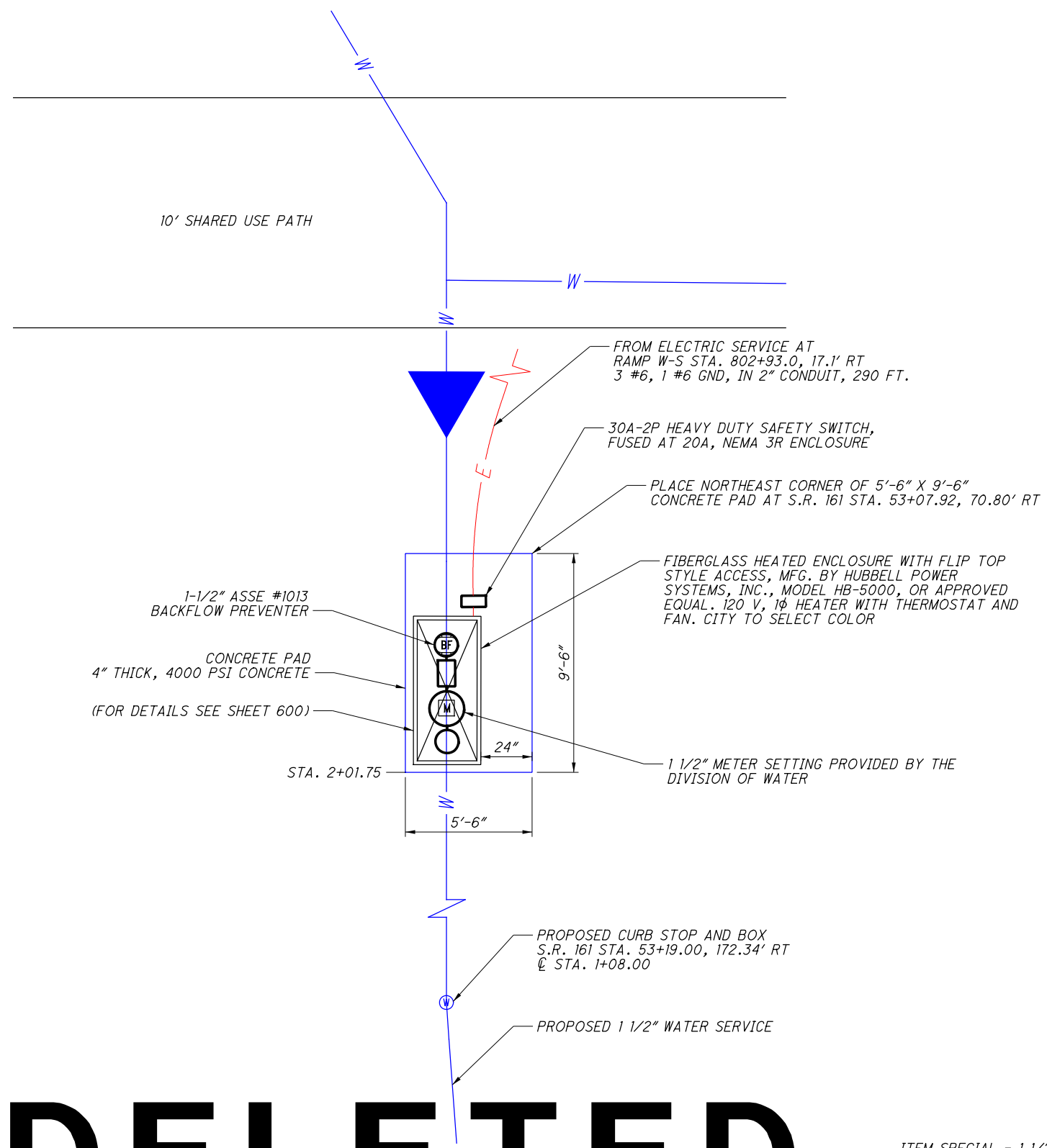
0 3 6
HORIZONTAL
SCALE IN FEET

CALCULATED
ENR
CHECKED
JED

WATER SERVICE PLAN -
LANDSCAPE IRRIGATION

UNI - 33 - 24.87

599
923



DELETED

ITEM SPECIAL - 1 1/2" METER SETTING WITH BACK FLOW
PREVENTER IN HEATED ENCLOSURE

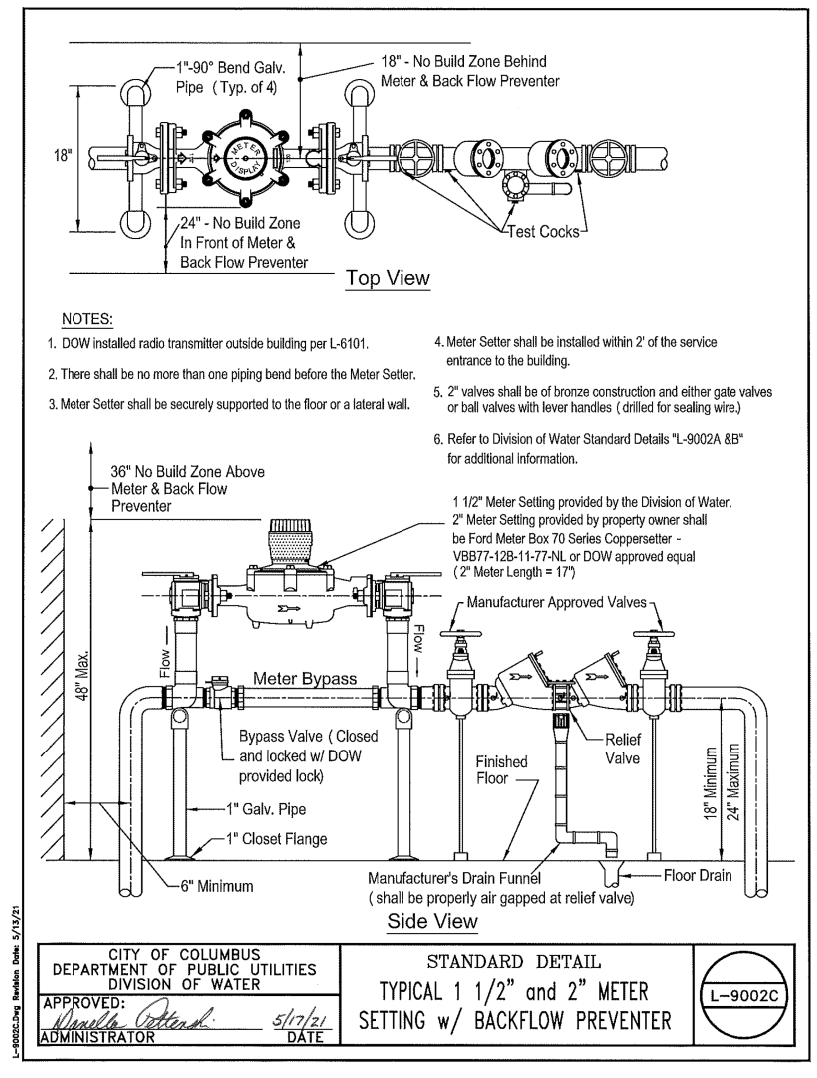
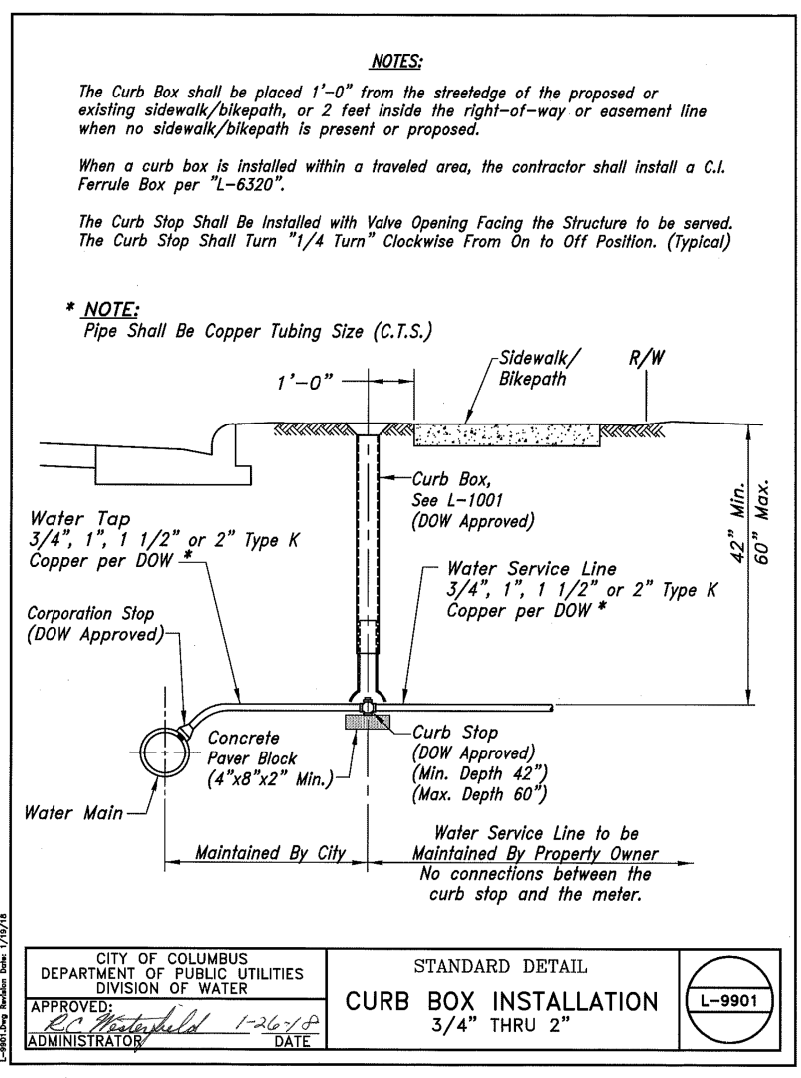
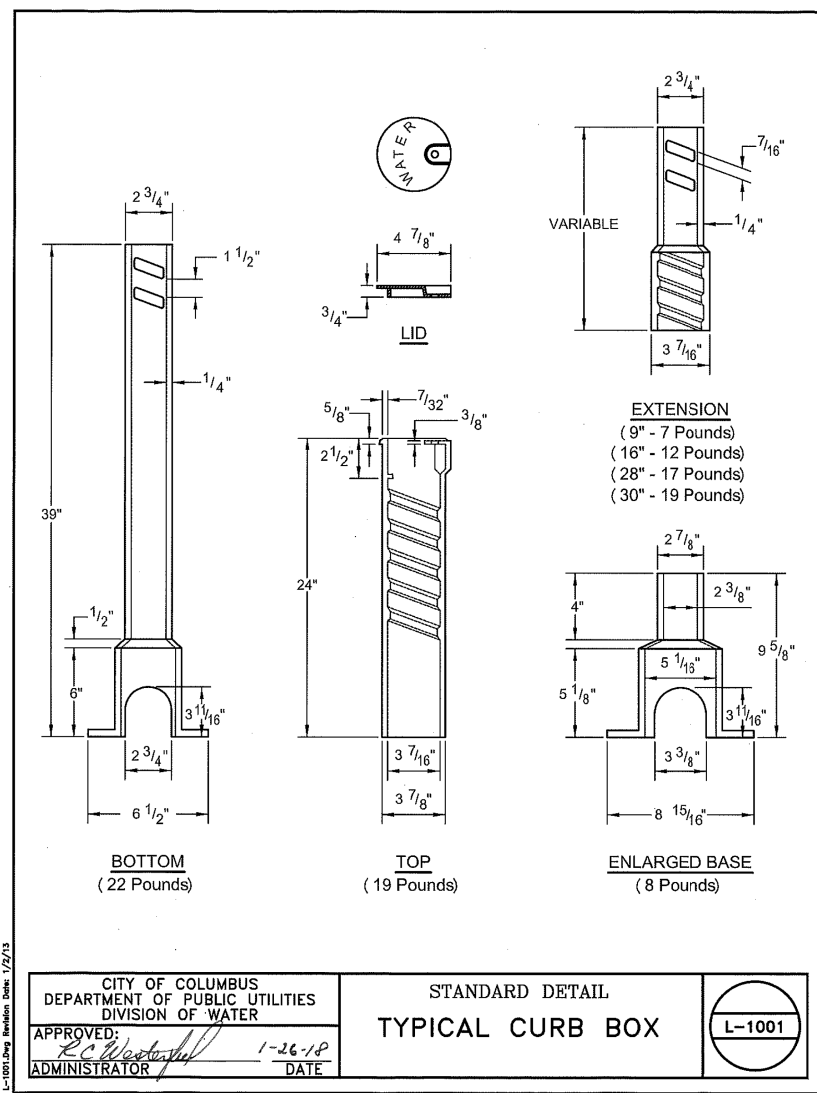
THIS LUMP SUM ITEM INCLUDES THE METER, BACKFLOW PREVENTER, PIPING,
VALVES, FITTINGS, CONNECTIONS, THE HEATED ENCLOSURE, SAFETY SWITCH,
WIRING AND CONDUIT (INCLUDING CONNECTION TO THE POWER SERVICE AT
STA. 802+93), EXCAVATION, CONCRETE PAD INSTALLATION, START UP, AND
ALL APPURTENANT WORK NECESSARY FOR THE SYSTEM COMPLETE, TESTED,
AND READY FOR SERVICE.

NO.	DESCRIPTION	REV. BY	DATE
D	DELETED SHEET	ENR	3-5-2022

P:\PR55741\FRA\80748\Design\Utilities\Sheets\80748\PI03.dgn Sheet 3/5/2022 4:32:39 PM riley

NOTES:

1. SEE SLAB SIZE PER PLAN ENLARGEMENT ON SHEET 599. VERIFY ALL DIMENSIONS WITH THE MANUFACTURER PRIOR TO INSTALLATION.
2. HEATED ENCLOSURE SHALL BE FIBERGLASS, FLIPTOP STYLE, AS MANUFACTURED BY HUBBLE POWER SYSTEMS, INC. MODEL NO. HP-5000 OR APPROVED EQUAL. COLOR TO BE SELECTED BY OWNER PRIOR TO ORDERING.
3. DETAILS AS SHOWN HEREIN ARE TYPICAL AND MAY NOT REFLECT ALL INSTALLATIONS. CONTACT DISTRIBUTOR OR MANUFACTURER TO VERIFY ALL DIMENSIONS PRIOR TO INSTALLATION.



DELETED

NO.	DESCRIPTION	REV. BY	DATE
D	DELETED SHEET	ENR	3-5-2022

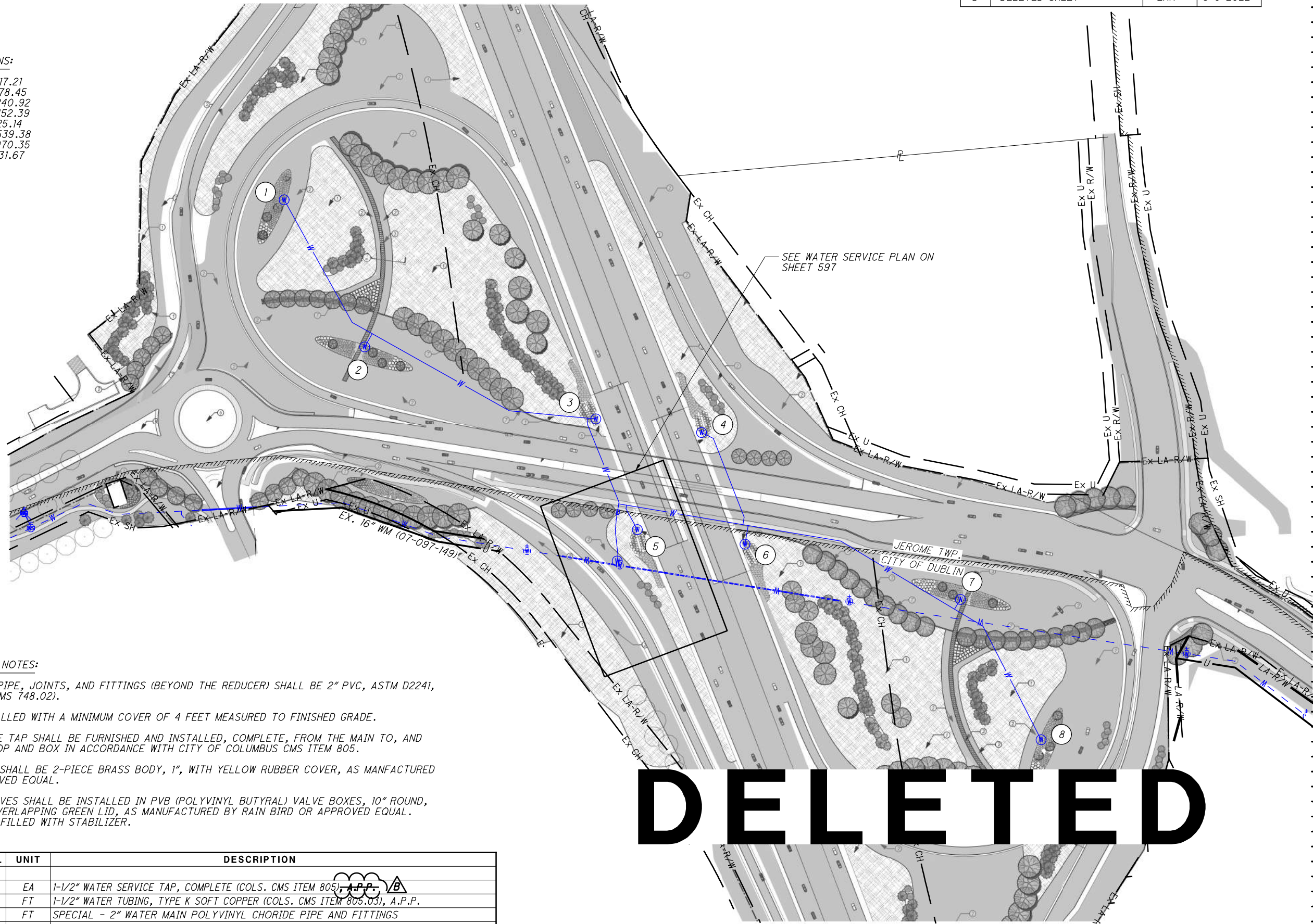
P:\PR5574\FRA\80748\Design\Utilities\Sheets\80748\UP104.dgn Design 3/5/2022 6:24:10 PM riley

NO.	DESCRIPTION	REV. BY	DATE
B	ITEM UPDATES	ENR	2-28-2022
D	DELETED SHEET	ENR	3-5-2022



QUICK COUPLER LOCATIONS:

- 1 - N 769764.60, E 1777617.21
- 2 - N 769470.17, E 1777778.45
- 3 - N 769325.93, E 1778240.92
- 4 - N 769298.85, E 1778452.39
- 5 - N 769101.95, E 1778325.14
- 6 - N 769075.20, E 1778539.38
- 7 - N 768964.62, E 1778970.35
- 8 - N 768683.76, E 1779131.67



IRRIGATION AS PER PLAN NOTES:

ALL IRRIGATION SYSTEM PIPE, JOINTS, AND FITTINGS (BEYOND THE REDUCER) SHALL BE 2" PVC, ASTM D2241, SDR 21, 200 PSI (ODOT CMS 748.02).

ALL PIPE SHALL BE INSTALLED WITH A MINIMUM COVER OF 4 FEET MEASURED TO FINISHED GRADE.

THE 1-1/2" WATER SERVICE TAP SHALL BE FURNISHED AND INSTALLED, COMPLETE, FROM THE MAIN TO, AND INCLUDING, THE CURB STOP AND BOX IN ACCORDANCE WITH CITY OF COLUMBUS CMS ITEM 805.

QUICK COUPLING VALVES SHALL BE 2-PIECE BRASS BODY, 1", WITH YELLOW RUBBER COVER, AS MANUFACTURED BY RAIN BIRD, OR APPROVED EQUAL.

ALL QUICK COUPLING VALVES SHALL BE INSTALLED IN PVB (POLYVINYL BUTYRAL) VALVE BOXES, 10" ROUND, WITH BLACK BODY AND OVERLAPPING GREEN LID, AS MANUFACTURED BY RAIN BIRD OR APPROVED EQUAL. BOXES SHALL BE GRAVEL FILLED WITH STABILIZER.

DELETED

ITEM	EXT.	TOTAL	UNIT	DESCRIPTION
638	98000	1	EA	1-1/2" WATER SERVICE TAP, COMPLETE (COLS. CMS ITEM 805), A.P.P.
638	20774	114	FT	1-1/2" WATER TUBING, TYPE K SOFT COPPER (COLS. CMS ITEM 805.03), A.P.P.
638	20414	2,350	FT	SPECIAL - 2" WATER MAIN POLYVINYL CHORIDE PIPE AND FITTINGS
638	98000	8	EA	SPECIAL-QUICK COUPLER VALVE, 1" BRASS, 2 PIECE, WITH BOX (10" ROUND)
638	98100	1	LUMP	SPECIAL-1 1/2" METER SETTING WITH BACK FLOW PREVENTER IN HEATED ENCLOSURE

IRRIGATION PLAN

UNI - 33 - 24.87

601
923

REF NO.	SHEET NO.	STATION TO STATION	SIDE	850		644		644		644		644		807		807		807		807		807		
				FT	MILE	FT	MILE	FT	MILE	FT	MILE	FT	MILE	FT	MILE	FT	MILE	FT	MILE	FT	MILE	FT	MILE	FT
CH-19	676	677	3050+74	3055+67	US-33 WB	494																		
CH-20	676	677	2045+77	2053+12	US-33 WB	735																		
CH-21	676	677	817+08	2053+62	US-33 WB	787																		
DL-5	676	677	2053+62	2064+50	US-33 EB	1088																		
DL-6	676	678	3072+18	3088+68	US-33 WB	1650																		
CH-22	682	690	924+30	918+45	RAMP S-EW																			
CH-23	682	690	924+30	918+45	RAMP S-EW																			
LA-1	682	682	918+63	919+63	RAMP S-EW																			
LA-2	682	682	918+64	918+64	RAMP S-EW																			
LA-3	682	682	918+68	918+68	RAMP S-EW																			
LA-4	682	682	919+51	919+51	RAMP S-EW																			
LA-5	682	682	919+51	919+51	RAMP S-EW																			
LA-6	682	682	919+55	919+55	RAMP S-EW																			
LA-7	682	682	920+38	920+38	RAMP S-EW																			
LA-8	682	682	920+37	920+37	RAMP S-EW																			
LA-9	682	682	920+40	920+40	RAMP S-EW																			
LA-10	682	682	921+25	921+25	RAMP S-EW																			
LA-11	682	682	921+24	921+24	RAMP S-EW																			
LA-12	682	682	921+27	921+27	RAMP S-EW																			
LA-13	682	682	922+25	922+25	RAMP S-EW																			
LA-14	682	682	922+05	922+05	RAMP S-EW																			
LA-15	682	682	922+09	922+09	RAMP S-EW																			
LA-16	682	682	922+89	922+89	RAMP S-EW																			
LA-17	682	682	922+89	922+89	RAMP S-EW																			
LA-18	682	682	922+93	922+93	RAMP S-EW																			
CH-24	682	685	614+70	617+75	RAMP N-EW																			
CH-25	682	685	616+76	617+79	RAMP N-EW																			
CH-26	682	685	614+70	222+84	RAMP N-EW																			
CH-27	682	685	616+20	224+60	RAMP N-EW																			
DLI-1	685	685	617+57	617+85	RAMP N-EW																			
DLI-2	685	685	43+71	43+80	SR 161 EB																			
DLI-3	685	685	43+86	43+91	SR 161 EB																			
DLI-4	685	685	123+65	123+84	EITERMAN NB																			
DLI-5	685	685	45+43	45+50	SR 161 WB																			
CH-28	685	685	41+48	43+63	SR 161 WB																			
CH-29	685	685	41+48	43+70	SR 161 WB																			
CH-30	685	685	41+95	43+75	SR 161 EB																			
CH-31	685	685	42+70	43+76	SR 161 EB																			
TOTALS CARRIED TO SHEET				667		4754																		

CALCULATED
EMW
CHECKED
SLT

PAVEMENT MARKING SUBSUMMARY

UNI-33-24.87

NO.	DESCRIPTION	REV. BY	DATE
D	QUANTITY UPDATES	EMW	3-7-22

659
923

REF NO.	SHEET NO.		STATION TO STATION		SIDE	618	620	620	621	621	621	644	644	644	644	644	644	644	646	646	646	646	807	807	807	807	850		
						RUMBLE STRIPS, EDGE LINE FT	DELINATOR, POST-GROUND MOUNTED, TYPE C, WHITE EACH	DELINATOR, POST-GROUND MOUNTED, TYPE D, YELLOW EACH	RPM, 2-WAY (WHITE/RED) EACH	RPM, 1-WAY (WHITE) EACH	RPM, 2-WAY (YELLOW/RED) EACH	STOP LINE FT	CROSSWALK LINE FT	CHEVRON MARKING FT	LANE ARROW EACH	WORD ON PAVEMENT, 72" EACH	PAVEMENT MARKING, MISC., 8" LANE LINE, WHITE, 6" LONG, 3' GAP FT	PAVEMENT MARKING, MISC., 8" DOTTED LINE, WHITE, 8' LONG, 10' GAP FT	PAVEMENT MARKING, MISC., 24" DOTTED LINE, WHITE, 24" LONG, 12" GAP FT	TRANSVERSE/DIAGONAL LINE FT	STOP LINE FT	CROSSWALK LINE FT	CHEVRON MARKING FT	LANE ARROW EACH	WET REFLECTIVE EPOXY PAVEMENT MARKING, EDGE LINE, 6" WHITE MILE	WET REFLECTIVE EPOXY PAVEMENT MARKING, EDGE LINE, 6" YELLOW MILE	WET REFLECTIVE EPOXY PAVEMENT MARKING, LANE LINE, 6" MILE	WET REFLECTIVE EPOXY PAVEMENT MARKING, CHANNELIZING LINE, 12" FT	GROOVING FOR 6" RECESSED PAVEMENT MARKING, (ASPHALT) MILE
LA-88	693	693	405+31	405+31	HYLAND-CROY																								
LA-89	693	693	405+31	405+31	HYLAND-CROY																								
LA-90	693	693	405+31	405+31	HYLAND-CROY																								
LA-91	693	693	405+80	405+80	HYLAND-CROY																								
LA-92	693	693	405+80	405+80	HYLAND-CROY																								
TLY-2	686	686	121+77	122+16	EITERMAN RD																								
LA-93	686	686	122+19	122+19	EITERMAN NB																								
LA-94	686	686	122+19	122+19	EITERMAN NB																								
CL-7	686	686	121+68	122+14	EITERMAN SB																								
CL-8	686	686	121+66	122+23	EITERMAN NB																								
LA-95	691	691	72+57	72+57	SR 161 EB																								
LA-96	691	691	73+36	73+36	SR 161 EB																								
LA-97	691	691	74+14	74+14	SR 161 EB																								
QUANTITIES FOR PLAN SPLIT 01/IMS/PV																													
TOTALS FROM SHEET						656	8163	97	55	152	115	49											1.82	1.63	0.28	1374	9.30		
657																													
658									57																				
659																													
660																													
661																													
662												100	167	3						28									
663																													
664																													
665																													
666																													
667																													
SUBTOTAL FOR PLAN SPLIT 01/IMS/PV						8163	97	55	209	115	49	100	167	3					28			18	1.82	1.63	0.28	3465	9.3		
QUANTITIES FOR PLAN SPLIT 02/S>2/PV																													
TOTALS FROM SHEET						656																							
657																													
658																													
659																													
660																													
661																													
662												66	457	17						30	142								
663																													
664												15		17															
665																													
666																													
667																													
SUBTOTAL FOR PLAN SPLIT 02/S>2/PV												81	837	115	55	4	462	136	185	130	46	142	23	3					
TOTALS FROM SHEET						8163	97	55	152	115	49													1.82	1.63	0	1374	9.30	
TOTALS FROM SHEET						657																							
TOTALS FROM SHEET						658			57																				
TOTALS FROM SHEET						659																							
TOTALS FROM SHEET						660																							
TOTALS FROM SHEET						661																							
TOTALS FROM SHEET						662																							
TOTALS FROM SHEET						663																							
TOTALS FROM SHEET						664																							
TOTALS FROM SHEET						665																							
TOTALS FROM THIS SHEET						666																							
TOTALS FROM SHEET						667																							
TOTALS CARRIED TO GENERAL SUMMARY						8163	97	55	209	115	49	181	1004	115	61	4	462	136	185	130	74	142	23	21	1.82	1.63	0.28	3465	9.30

D

1.82 1.63 0.28 1374 9.30 18 2091 3465 9.3 185 18 2091 3465 9.30

NO.	DESCRIPTION	REV. BY	DATE
D	QUANTITY UPDATES	EMW	3-7-22

PAVEMENT MARKING SUBSUMMARY

UNI-33-24.87

CALCULATED
EMW
CHECKED
SLT

666
923

REF NO.	SHEET NO.	STATION TO STATION	SIDE	850	850	850	644	644	644	644	644	644	807	807	807	807	807													
				FT	MILE	FT	FT	MILE	MILE	MILE	MILE	FT	MILE	MILE	MILE	FT	FT													
				TO	TO																									
TOTALS FROM SHEET				656																										
				657	10433	3.73	1374			0.65				2.92	3.19	3.19	6535	3898												
				658																										
				659	4754		2091	19									2016	2738												
				660																										
				661																										
				662																										
				663				79																						
				664																										
				665																										
				666																										
				667																										
SUBTOTAL FOR PLAN SPLIT 01/IMS/PV				15187	3.73	3465	198	0.65					2.92	3.19	3.19	8551	6636													
QUANTITIES FOR PLAN SPLIT 01/IMS/PV																														
TOTALS FROM SHEET				656																										
				657																										
				658																										
				659				76																						
				660																										
				661				127	0.11	0.65			45																	
				662																										
				663				82	0.08			0.58																		
				664																										
				665				285	0.38	0.29	0.21	0.48	794																	
				666																										
				667				31				0.02																		
SUBTOTAL FOR PLAN SPLIT 02/S>2/PV				7001	0.57	0.94	0.23	1.06	839																					
TOTALS FROM SHEET				656																										
TOTALS FROM SHEET				657	10433	3.73	1374			0.65				2.92	3.19	3.19	6535	3898												
TOTALS FROM SHEET				658																										
TOTALS FROM SHEET				659	4754		2091	95									2016	2738												
TOTALS FROM SHEET				660																										
TOTALS FROM SHEET				661				127	0.11	0.65			45																	
TOTALS FROM SHEET				662																										
TOTALS FROM SHEET				663				82	0.08			0.88																		
TOTALS FROM SHEET				664																										
TOTALS FROM SHEET				665				285	0.38	0.29	0.21	0.48	794																	
TOTALS FROM SHEET				666																										
TOTALS FROM THIS SHEET				7001	0.57	0.94	0.23	1.06	839																					
TOTALS CARRIED TO GENERAL SUMMARY				15187	3.73	3465	199	1.22	0.94	0.23	1.36	839	2.92	3.19	3.19	8551	6636													

PAVEMENT MARKING SUBSUMMARY

CALCULATED
EMW
CHECKED
SLT

UNI-33-24.87

NO.	DESCRIPTION	REV. BY	DATE
D	QUANTITY UPDATES	EMW	3-7-22

667
923