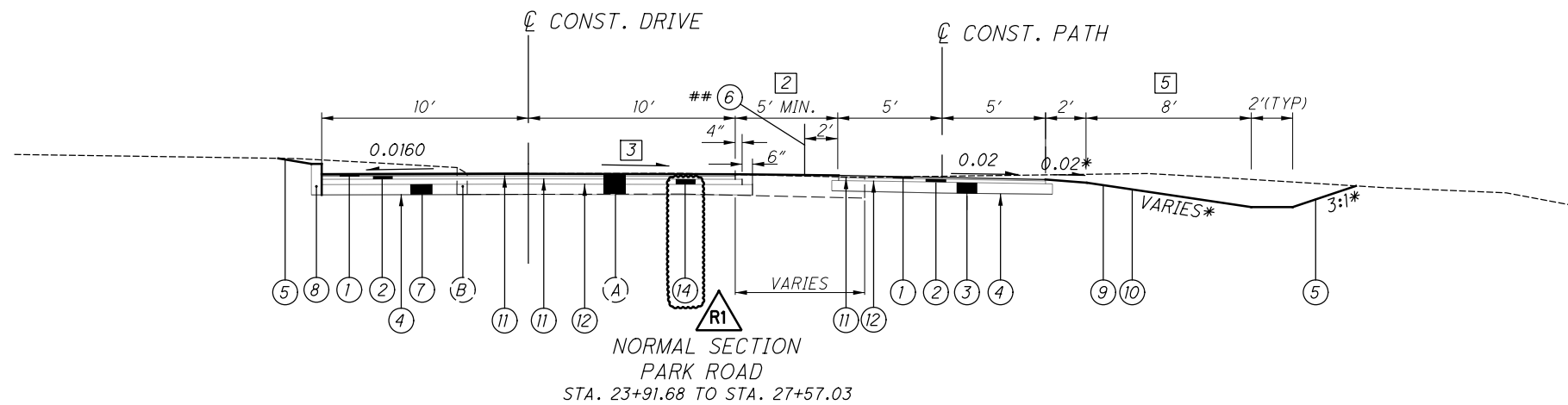


H:\2017\0868\0D01\ProjectData\06223\_CCBP\Roadway\Design\Sheets\06223\_GY001.dgn Sheet 4/22/2022 2:26:07 PM troyer

ITEM LEGEND

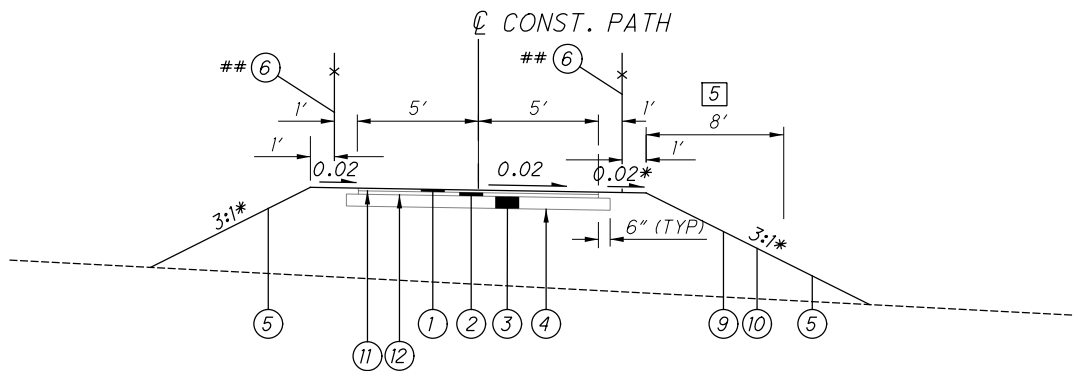
- (A) EXISTING PAVEMENT (TO BE REMOVED)
- (B) EXISTING CURB (TO BE REMOVED)
- (1) ITEM 441 - 1 1/4" ASPHALT CONCRETE SURFACE COURSE, TYPE 1, (448), PG64-22
- (2) ITEM 441 - 1 3/4" ASPHALT CONCRETE INTERMEDIATE COURSE, TYPE 2, (448)
- (3) ITEM 304 - 6" AGGREGATE BASE
- (4) ITEM 204 - SUBGRADE COMPACTION AND PROOF ROLLING
- (5) ITEM 659 - SEEDING AND MULCHING
- (6) ITEM 607 - FENCE MISC.: WOOD BIKEWAY RAILING
- (7) ITEM 304 - 6" AGGREGATE BASE
- (8) ITEM 609 - CURB, TYPE 6
- (9) ITEM 659 - TOPSOIL (4")
- (10) ITEM 670 - SLOPE EROSION PROTECTION
- (11) ITEM 407 - NON-TRACKING TACK COAT
- (12) ITEM 408 - PRIME COAT
- (13) ITEM 452 - 6" NON-REINFORCED CONCRETE PAVEMENT, CLASS QC 1P
- (14) ITEM 301 - 3" ASPHALT CONCRETE BASE, PG64-22
- (15) ITEM 526 - REINFORCED CONCRETE APPROACH SLAB (T=13")



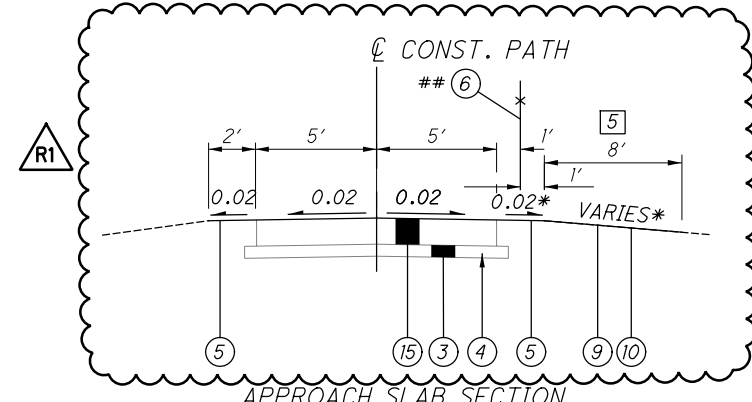
## FENCE LIMITS: STA. 25+25 TO STA. 28+75 RT  
 STA. 31+05 TO STA. 31+95 RT  
 STA. 35+05 TO STA. 35+75 RT  
 STA. 58+00 TO STA. 58+95 L/R  
 STA. 61+00 TO STA. 64+00 L/R  
 STA. 68+25 TO STA. 72+00 RT  
 STA. 93+00 TO STA. 93+68 L/R  
 STA. 96+78 TO STA. 97+20 L/R

BRIDGE LIMITS: STA. 93+68 TO STA. 96+78

\* OR AS SHOWN ON CROSS SECTIONS

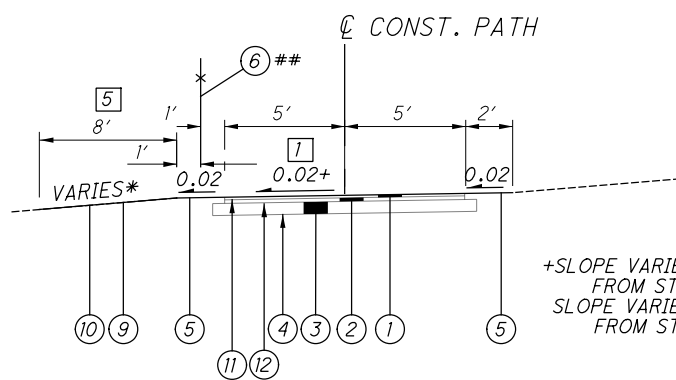
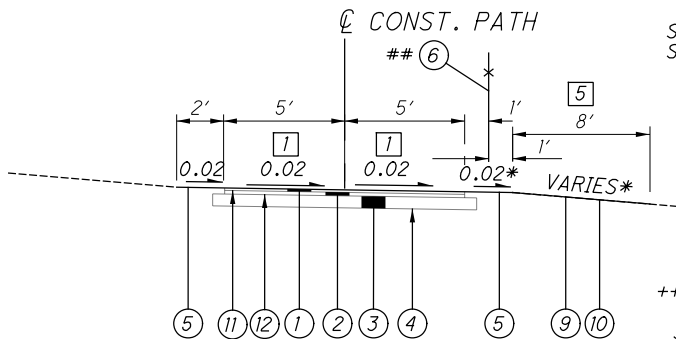


++SLOPE VARIES FROM 0.02 RT. TO 0.02 LT  
 FROM STA. 93+26.46 TO STA. 93+46.46  
 SLOPE VARIES FROM 0.02 LT TO 0.02 RT  
 FROM STA. 96+99.95 TO STA. 97+19.95

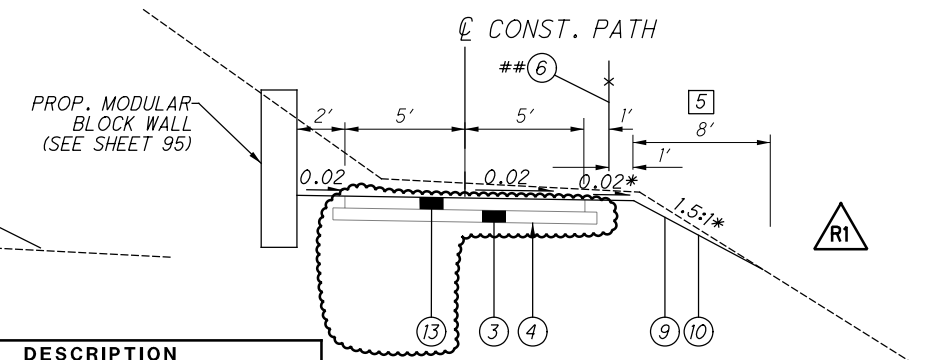
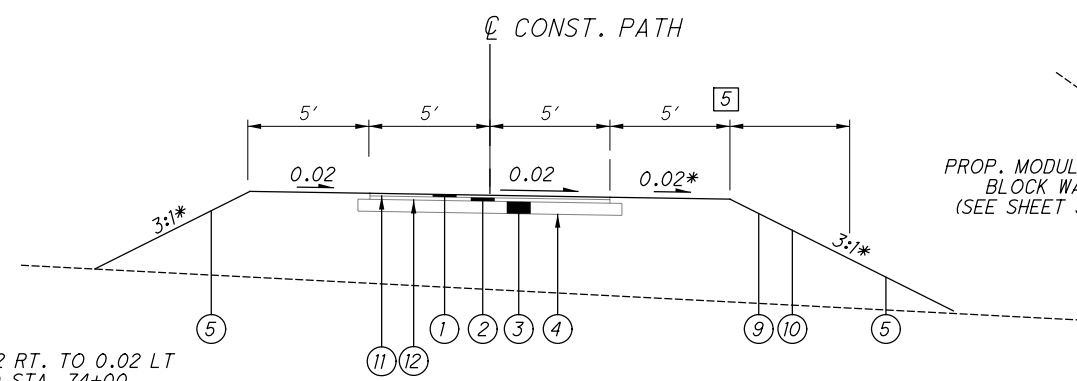


- (7) CROSS SLOPE TRANSITIONS:
- VARIES -0.02 TO +0.02 STA. 40+00 TO STA. 40+50
  - +0.02 STA. 40+50 TO STA. 41+50
  - VARIES +0.02 TO -0.02 STA. 41+50 TO STA. 42+00
  - VARIES -0.02 TO +0.02 STA. 72+94 TO STA. 73+94
  - +0.02 STA. 73+94 TO STA. 79+94
  - VARIES +0.02 TO -0.02 STA. 79+94 TO STA. 80+94
  - VARIES -0.02 TO +0.02 STA. 92+96.46 TO STA. 93+46.46
  - VARIES +0.02 TO -0.02 STA. 96+95.95 TO STA. 97+45.95

- (2) PROVIDE 5' MINIMUM SEPARATION FROM PARK DRIVE TO PATH. REMOVE EXISTING PAVEMENT TO PROPOSED EDGE OF DRIVE.
- (3) SLOPE VARIES TO MATCH EDGE OF PAVEMENT ELEVATIONS SHOWN ON CROSS SECTIONS.
- (4) SLOPE VARIES TO MATCH EDGE OF PAVEMENT ELEVATIONS SHOWN ON CROSS SECTIONS.
- (5) AREA OF 10' WIDE FILTER STRIP (2' SHOULDER AND 8' SLOPE AREA). TOPSOIL AND SLOPE EROSION PROTECTION TO BE PLACED ALONG 10' WIDTH. SEEDING AND MULCHING TO BE PLACE BEYOND THE FILTER STRIP. FILTER STRIPS WILL NOT BE CONSTRUCTED AT STA. 25+50, 28+00, AND 35+50. SEE CROSS SECTION SHEETS FOR CONFIGURATION OF THE FILTER STRIPS.



+SLOPE VARIES FROM 0.02 RT. TO 0.02 LT  
 FROM STA. 73+00 TO STA. 74+00  
 SLOPE VARIES FROM 0.02 LT TO 0.02 RT  
 FROM STA. 80+00 TO STA. 81+00



REV.	DATE	DESCRIPTION
R1	4-21-22	UPDATED APPROACH SLAB TYPICAL SECTION.
R1	4-22-22	ADDED BUBBLE FOR LEGEND ITEM 14.
R1	4-22-22	CHANGED PAVEMENT TYPE FROM ASPHALT TO CONCRETE.

TYPICAL SECTIONS

WAR-CLEAR CRK.

H:\2017\70868\000\ProjectData\06223\_CCBP\Design\Roadway\Sheets\06223\_GG001.dgn Sheet 3/9/2022 8:07:34 AM troyer

SHEET NUM.													PART.	ITEM	ITEM	GRAND	UNIT	DESCRIPTION	SEE SHEET NO.
5	6	11	12	13	16	17	90	91	92	93	122	OFFICE CALCS	01/CMQ/OT	EXT	TOTAL				
<b>ROADWAY</b>																			
LS													LS	201	11000	LS	CLEARING AND GRUBBING		
			2										2	202	20010	2	EACH	HEADWALL REMOVED	
		5										1,014	1,019	202	23000	1,019	SY	PAVEMENT REMOVED	
		248											248	202	30000	248	SF	WALK REMOVED	
		394											394	202	32000	394	FT	CURB REMOVED	
			26										26	202	35200	26	FT	PIPE REMOVED, OVER 24"	
													115	202	38000	115	FT	GUARDRAIL REMOVED	
		115	70										262	202	75000	262	FT	FENCE REMOVED	
													15,137	203	10000	15,137	CY	EXCAVATION	
													9,044	203	20000	9,044	CY	EMBANKMENT	
6												13,150	13,150	204	10000	13,150	SY	SUBGRADE COMPACTION	
													6	204	45000	6	HOUR	PROOF ROLLING	
		25											25	606	15050	25	FT	GUARDRAIL, TYPE MGS	
		1											1	606	26150	1	EACH	ANCHOR ASSEMBLY, MGS TYPE E (MASH 2016)	
													230	607	23000	230	FT	FENCE, TYPE CLT	
		1,163	1,329										2,492	607	98000	2,492	FT	FENCE, MISC.: WOOD BIKEWAY RAILING	
		456	143										599	608	52000	599	SF	CURB RAMP	
													74	623	40520	74	EACH	RIGHT-OF-WAY MONUMENT	
		26											26	SPECIAL	69050500	26	EACH	CONCRETE PARKING BLOCK	
													LS	878	25000	LS		INSPECTION AND COMPACTION TESTING OF UNBOUND MATERIALS	
<b>EROSION CONTROL</b>																			
	5			1.1			4	14	4	6			28	601	11000	28	SY	RIPRAP, TYPE D	
							3	6	2	2			19.1	601	32210	19.1	CY	ROCK CHANNEL PROTECTION, TYPE C WITH AGGREGATE FILTER	
			278										278	601	34400	278	CY	ROCK CHANNEL PROTECTION, WITH GROUT (TYPE C, WITH AGGREGATE FILTER)	
2													2	659	00100	2	EACH	SOIL ANALYSIS TEST	
3,173													3,173	659	00300	3,173	CY	TOPSOIL	
28,584													28,584	659	10000	28,584	SY	SEEDING AND MULCHING	
3.9													3.9	659	20000	3.9	TON	COMMERCIAL FERTILIZER	
5.9													5.9	659	31000	5.9	ACRE	LIME	
155													155	659	35000	155	MGAL	WATER	
		6,624	4,404		9,088								20,116	670	00500	20,116	SY	SLOPE EROSION PROTECTION	
		355	399										754	670	00700	754	SY	DITCH EROSION PROTECTION	
													LS	832	15000	LS		STORM WATER POLLUTION PREVENTION PLAN	
													LS	832	15002	LS		STORM WATER POLLUTION PREVENTION INSPECTIONS	
													LS	832	15010	LS		STORM WATER POLLUTION PREVENTION INSPECTION SOFTWARE	
													170,000	832	30000	170,000	EACH	EROSION CONTROL	
<b>DRAINAGE</b>																			
				0.21			0.92	2.66	0.78	0.92			5.49	602	20000	5.49	CY	CONCRETE MASONRY	
	100												100	611	01800	100	FT	8" CONDUIT, TYPE B	
	100												100	611	02500	100	FT	8" CONDUIT, TYPE E	
	100												100	611	02600	100	FT	8" CONDUIT, TYPE F	
													105	611	04400	105	FT	12" CONDUIT, TYPE B	
													163	611	04600	163	FT	12" CONDUIT, TYPE C	
													62	611	04900	62	FT	12" CONDUIT, TYPE D	
													24	611	05900	24	FT	15" CONDUIT, TYPE B, 706.02	
													29	611	06400	29	FT	15" CONDUIT, TYPE D	

**GENERAL SUMMARY**

**WAR-CLEAR CRK.**

H:\2017\170868\000\ProjectData\06223\_CCBP\Roadway\Sheets\06223\_GG002.dgn Sheet 4/22/2022 2:24:23 PM troyer

SHEET NUM.											PART.	ITEM	ITEM	GRAND	UNIT	DESCRIPTION	SEE SHEET NO.
11	12	13	14	15	16	90	91	92	93	OFFICE CALCS	01/CMQ/OT	EXT	TOTAL				
<b>DRAINAGE (CONT.)</b>																	
		150									150	611	07600	150	FT	18" CONDUIT, TYPE C, 706.02	
		26									26	611	07900	26	FT	18" CONDUIT, TYPE D	
		38									38	611	09400	38	FT	21" CONDUIT, TYPE D	
								38			38	611	09400	38	FT	21" CONDUIT, TYPE D	
									50		50	611	10900	50	FT	24" CONDUIT, TYPE D	
										72	72	611	10900	72	FT	24" CONDUIT, TYPE D, 706.02, 707.01 ALUMINIZED, 707.04, OR 707.33	
											88	611	22200	88	FT	54" CONDUIT, TYPE A, 706.02, 707.02 ALUMINIZED, 707.04, OR 707.33	
		1									1	611	98150	1	EACH	CATCH BASIN, NO. 3	
		4									4	611	98470	4	EACH	CATCH BASIN, NO. 2-2B	
<b>PAVEMENT</b>																	
5											5	253	02000	5	CY	PAVEMENT REPAIR	
											75	301	46000	75	CY	ASPHALT CONCRETE BASE, PG64-22	
											1,821	304	20000	1,821	CY	AGGREGATE BASE	
											652	407	20000	652	GAL	NON-TRACKING TACK COAT	
											4,009	408	10000	4,009	GAL	PRIME COAT	
											347	441	50000	347	CY	ASPHALT CONCRETE SURFACE COURSE, TYPE 1, (448), PG64-22	
											486	441	50300	486	CY	ASPHALT CONCRETE INTERMEDIATE COURSE, TYPE 2, (448)	
											253	452	10010	253	SY	6" NON-REINFORCED CONCRETE PAVEMENT, CLASS QC 1P	
394											394	609	26000	394	FT	CURB, TYPE 6	
<b>WATER WORK</b>																	
10											10	638	00700	10	FT	6" WATER MAIN DUCTILE IRON PIPE ANSI CLASS 52, MECHANICAL JOINTS AND FITTINGS	
1											1	638	07480	1	EACH	6" GATE VALVE	
1											1	638	10200	1	EACH	6" FIRE HYDRANT	
1											1	638	10701	1	EACH	FIRE HYDRANT REMOVED AND DISPOSED OF, AS PER PLAN	
<b>TRAFFIC CONTROL</b>																	
	9					2					11	626	00110	11	EACH	BARRIER REFLECTOR, TYPE 2 (BIDIRECTIONAL)	
			297	60							357	630	03100	357	FT	GROUND MOUNTED SUPPORT, NO. 3 POST	
			1								1	630	08600	1	EACH	SIGN POST REFLECTOR (RED)	
			51	14							65	630	80100	65	SF	SIGN, FLAT SHEET	
			1								1	630	85100	1	EACH	REMOVAL OF GROUND MOUNTED SIGN AND REERECTION	
			1								1	630	86002	1	EACH	REMOVAL OF GROUND MOUNTED POST SUPPORT AND DISPOSAL	
			0.2	0.1							0.3	644	00300	0.3	MILE	CENTER LINE	
			29								29	644	00500	29	FT	STOP LINE	
			83								83	644	00620	83	FT	CROSSWALK LINE, 12"	
			2								2	644	01300	2	EACH	LANE ARROW	
			49								49	644	30000	49	FT	REMOVAL OF PAVEMENT MARKING	
			2								2	644	30020	2	EACH	REMOVAL OF PAVEMENT MARKING	

**GENERAL SUMMARY**

**WAR-CLEAR CRK.**

REV.	DATE	DESCRIPTION
R1	4-22-22	REVISED CENTER LINE STRIPING QUANTITY AND PAVEMENT QUANTITIES. ADDED CONCRETE PAVEMENT QUANTITY.



H:\2017\170868\0001\ProjectData\06223\_CCBP\Design\Roadway\Sheets\06223\_G5004.dgn Sheet 4/21/2022 9:51:52 AM Troyer

REF NO.	SHEET NO.	STATION TO STATION		SIDE	SIGN CODE	SIGN SIZE	630	630	630	630	630	644	644	644	644	644	644							
							GROUND MOUNTED SUPPORT, NO. 3 POST FT	SIGN, FLAT SHEET SF	SIGN POST REFLECTOR (RED) EACH	REMOVAL OF GROUND MOUNTED SIGN AND REERECTION EACH	REMOVAL OF GROUND MOUNTED POST SUPPORT AND DISPOSAL EACH	CENTER LINE MILE	STOP LINE FT	CROSSWALK LINE FT	LANE ARROW EACH	REMOVAL OF PAVEMENT MARKING FT	REMOVAL OF PAVEMENT MARKING EACH							
S1	19	9+70	9+81	LT			13.5		1	1	1													
S2	19	10+25		LT	R1-1-18	18"X18"	12.6	2.25																
S3	19	11+50		RT	SPECIAL R5-3-24	30"x12" 24"X24"	11.5, 11.5	2.5 4																
CL1	19	10+25	11+25	C/L								0.019												
SL1	19	10+88	10+07	LT									24											
SL2	19	10+25	10+27	LT									5											
CW1	19	9+81	10+15	LT										39										
CW2	19	9+76	10+15	LT/RT										44										
LA1	19	10+03		LT											1									
LA2	19	10+12		LT											1									
RM1	19	9+82	9+90	LT												24								
RM2	19	9+80	10+00	LT													2							
RM3	19	9+90	10+07	LT												25								
S4	20	18+00		LT	W1-2L-18	18"X18"	12.6	2.25																
CL2	20	18+14	19+00	C/L								0.016												
S5	21	19+50		LT	W1-2R-18	18"X18"	12.6	2.25																
CL3	21	19+00	19+40	C/L								0.008												
S6	22	26+35		RT	W1-2R-18	18"X18"	12.6	2.25																
S7	22	27+50		LT	W1-2L-18	18"X18"	12.6	2.25																
S8	22	28+00		RT	SPECIAL	36"X12"	11.5, 11.5	3																
CL4	22	26+46	27+43	C/L								0.018												
S9	24	36+50		RT	SPECIAL	36"X12"	11.5, 11.5	3																
S10	24	38+80		RT	W1-2L-18	18"X18"	12.6	2.25																
CL5	24	38+86	39+00	C/L								0.003												
S11	25	41+00		LT	W1-2R-18	18"X18"	12.6	2.25																
CL6	25	39+00	40+78	C/L								0.034												
S12	27	51+00		RT	W1-2R-18	18"X18"	12.6	2.25																
S13	27	52+00		LT	W1-2L-18	18"X18"	12.6	2.25																
S14	28	56+00		RT	W1-2R-18	18"X18"	12.6	2.25																
S15	28	57+00		LT	W7-5-18	18"X18"	12.6	2.25																
S16	28	57+00		RT	W7-5-18	18"X18"	12.6	2.25																
CL7	28	56+86	58+90									0.039												
S17	29	59+25		LT	W1-2L-18	18"X18"	12.6	2.25																
S18	30	68+00		RT	W1-2L-18	18"X18"	12.6	2.25																
CL8	30	68+42	69+00	C/L								0.011												
S19	31	69+50		LT	W1-2R-18	18"X18"	12.6	2.25																
S20	31	70+50		RT	W1-2L-18	18"X18"	12.6	2.25																
S21	31	72+00		LT	W1-2R-18	18"X18"	12.6	2.25																
CL9	31	69+00	69+19									0.004												
CL10	31	71+00	71+82									0.016												
CL11	32	77+56	79+00	C/L								0.027												
SUBTOTAL							296.7	50.75																
TOTALS CARRIED TO GENERAL SUMMARY							297	51	1	1	1		0.195 0.20	29	83	2	49	2						



REV.	DATE	DESCRIPTION
R1	4-21-22	UPDATED CENTER LINE STRIPING QUANTITY.

CALCULATED EJT CHECKED SDG  
**WAR-CLEAR CRK.**  
**TRAFFIC CONTROL SUBSUMMARY**  
 14  
 122

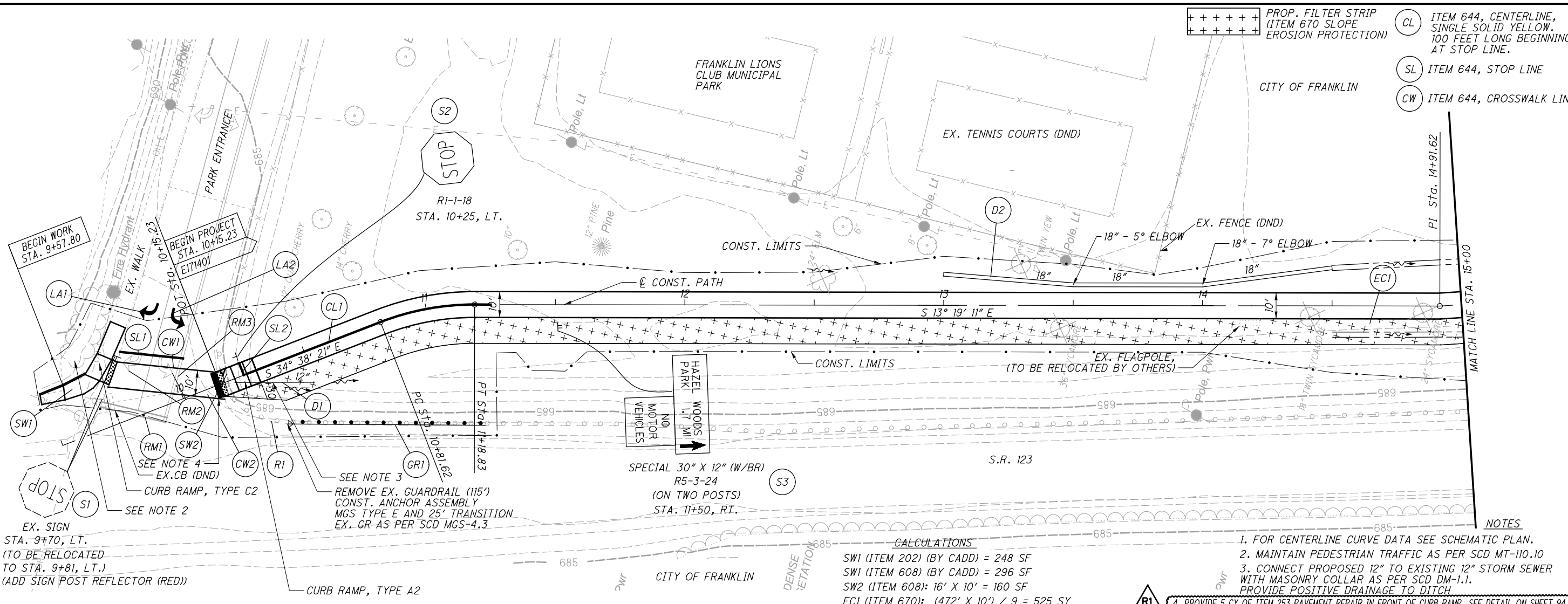
H:\2017\170868\0001\ProjectData\06223\_CCBP\Design\Roadway\Sheets\06223\_G5005.dgn Sheet 4/21/2022 9:48:20 AM troyer

REF NO.	SHEET NO.	STATION TO STATION		SIDE	SIGN CODE	SIGN SIZE	630		644		CENTER LINE	MILE	
							GROUND MOUNTED SUPPORT, NO. 3 POST	SIGN, FLAT SHEET	GROUND MOUNTED SUPPORT, NO. 3 POST	SIGN, FLAT SHEET			
			TO				FT	SF					
CL12	33	79+00		79+45	C/L							0.009	
CL13	33	83+12		84+00	C/L							0.017	
CL14	34	84+00		85+28	C/L							0.024	
S22	35	91+50			RT	W1-2R-18	18"X18"	12.6	2.25				
CL15	35	91+89		93+00								0.021	
S23	36	93+50			LT	W1-2L-18	18"X18"	12.6	2.25				
S24	36	97+50			RT	R1-1-18	18"X18"	12.0	2.25				
S25	36	97+50			LT	SPECIAL	36"X12"	11.5, 11.5	3				
							R5-3-24	24"X24"	4				
CL16	36	93+00		93+46	C/L							0.009	
CL17	36	96+56		97+56	C/L							0.019	
SUBTOTAL							60	14					
<b>TOTALS CARRIED TO GENERAL SUMMARY</b>							60	14					

R1  
0.099  
0.10

REV.	DATE	DESCRIPTION
R1	4-21-22	UPDATED CENTER LINE STRIPING QUANTITY.

H:\2017\0868\0001\ProjectData\06223\_CCBP\Design\Roadway\Sheets\06223\_GPO01.dgn Sheet 4/21/2022 3:28:05 PM Troyer



- +++++ PROP. FILTER STRIP (ITEM 670 SLOPE EROSION PROTECTION)
- CL ITEM 644, CENTERLINE, SINGLE SOLID YELLOW, 100 FEET LONG BEGINNING AT STOP LINE.
- SL ITEM 644, STOP LINE
- CW ITEM 644, CROSSWALK LINE

CALCULATED JRE CHECKED WDB

0 20 40 HORIZONTAL SCALE IN FEET

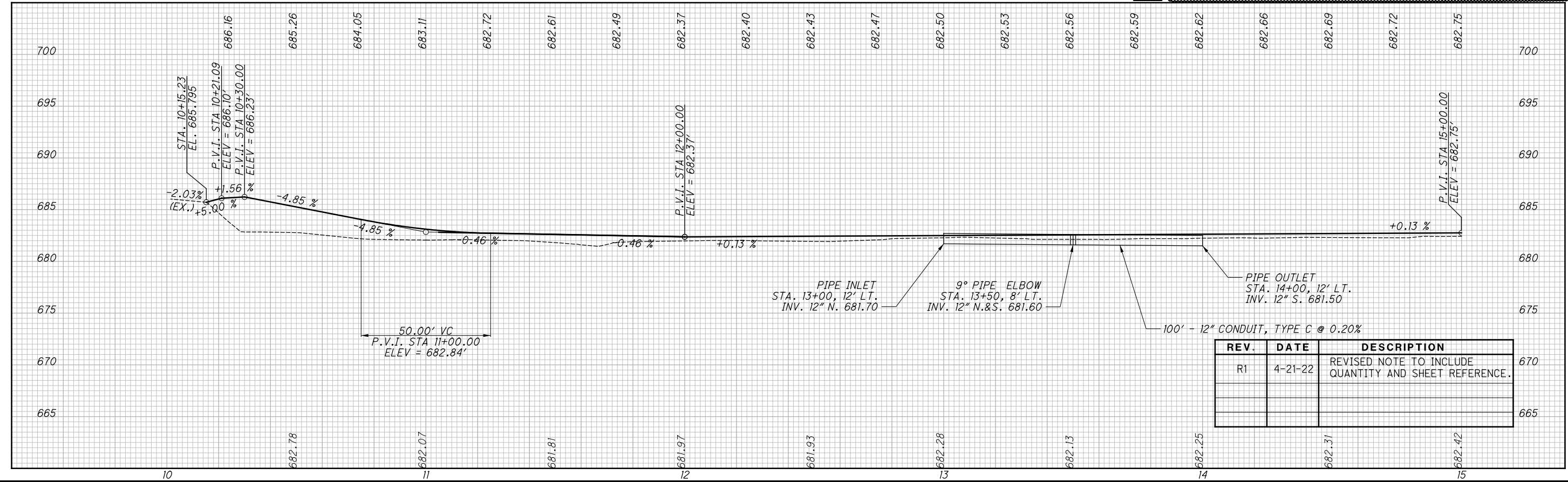
EX. SIGN STA. 9+70, LT. (TO BE RELOCATED TO STA. 9+81, LT.) (ADD SIGN POST REFLECTOR (RED))

SEE NOTE 3 REMOVE EX. GUARDRAIL (115') CONST. ANCHOR ASSEMBLY MGS TYPE E AND 25' TRANSITION EX. GR AS PER SCD MGS-4.3

SPECIAL 30" X 12" (W/BR) R5-3-24 (ON TWO POSTS) STA. 11+50, RT.

**CALCULATIONS**  
 SW1 (ITEM 202) (BY CADD) = 248 SF  
 SW1 (ITEM 608) (BY CADD) = 296 SF  
 SW2 (ITEM 608): 16' X 10' = 160 SF  
 EC1 (ITEM 670): (472' X 10') / 9 = 525 SY

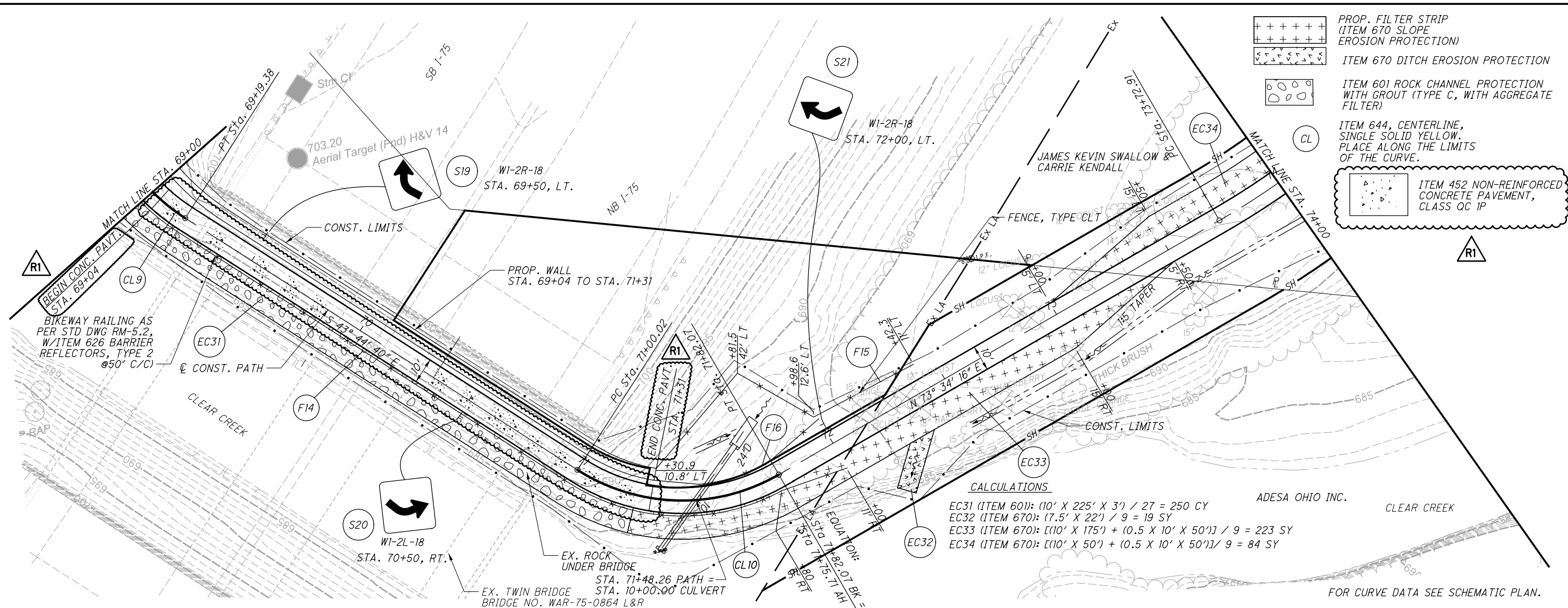
- NOTES**
- FOR CENTERLINE CURVE DATA SEE SCHEMATIC PLAN.
  - MAINTAIN PEDESTRIAN TRAFFIC AS PER SCD MT-110.10
  - CONNECT PROPOSED 12" TO EXISTING 12" STORM SEWER WITH MASONRY COLLAR AS PER SCD DM-1.1. PROVIDE POSITIVE DRAINAGE TO DITCH.
  - PROVIDE 5 CY OF ITEM 253 PAVEMENT REPAIR IN FRONT OF CURB RAMP. SEE DETAIL ON SHEET 94.



REV.	DATE	DESCRIPTION
R1	4-21-22	REVISED NOTE TO INCLUDE QUANTITY AND SHEET REFERENCE.

PLAN AND PROFILE  
 STA. 10+00 TO STA. 15+00

WAR-CLEAR CRK.



**CALCULATIONS**  
 EC31 (ITEM 601):  $(10' \times 225' \times 3') / 27 = 250 \text{ CY}$   
 EC32 (ITEM 670):  $(7.5' \times 22') / 9 = 19 \text{ SY}$   
 EC33 (ITEM 670):  $[(10' \times 175') + (0.5 \times 10' \times 50')] / 9 = 223 \text{ SY}$   
 EC34 (ITEM 670):  $[(10' \times 50') + (0.5 \times 10' \times 50')] / 9 = 84 \text{ SY}$

- +++++ PROP. FILTER STRIP (ITEM 670 SLOPE EROSION PROTECTION)
- ITEM 670 DITCH EROSION PROTECTION
- OOO ITEM 601 ROCK CHANNEL PROTECTION WITH GROUT (TYPE C, WITH AGGREGATE FILTER)
- CL ITEM 644, CENTERLINE, SINGLE SOLID YELLOW. PLACE ALONG THE LIMITS OF THE CURVE.
- ITEM 452 NON-REINFORCED CONCRETE PAVEMENT, CLASS QC 1P

CALCULATED JRE CHECKED WDB

0 10 20 40  
 HORIZONTAL SCALE IN FEET



REV.	DATE	DESCRIPTION
R1	4-22-22	SYMBOL AND LABELING ADDED TO INDICATE CONCRETE PAVEMENT ADJACENT TO RETAINING WALL.

**PLAN AND PROFILE**  
**STA. 69+00 TO STA. 74+00**

**WAR-CLEAR CRK.**  
 31 / 122



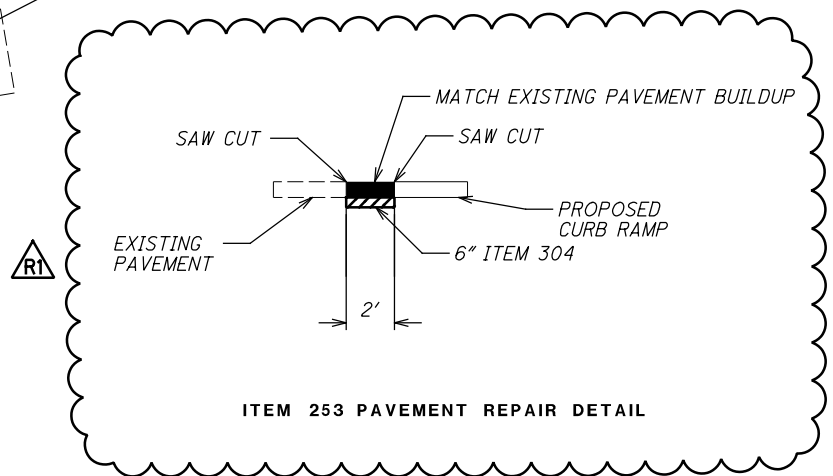
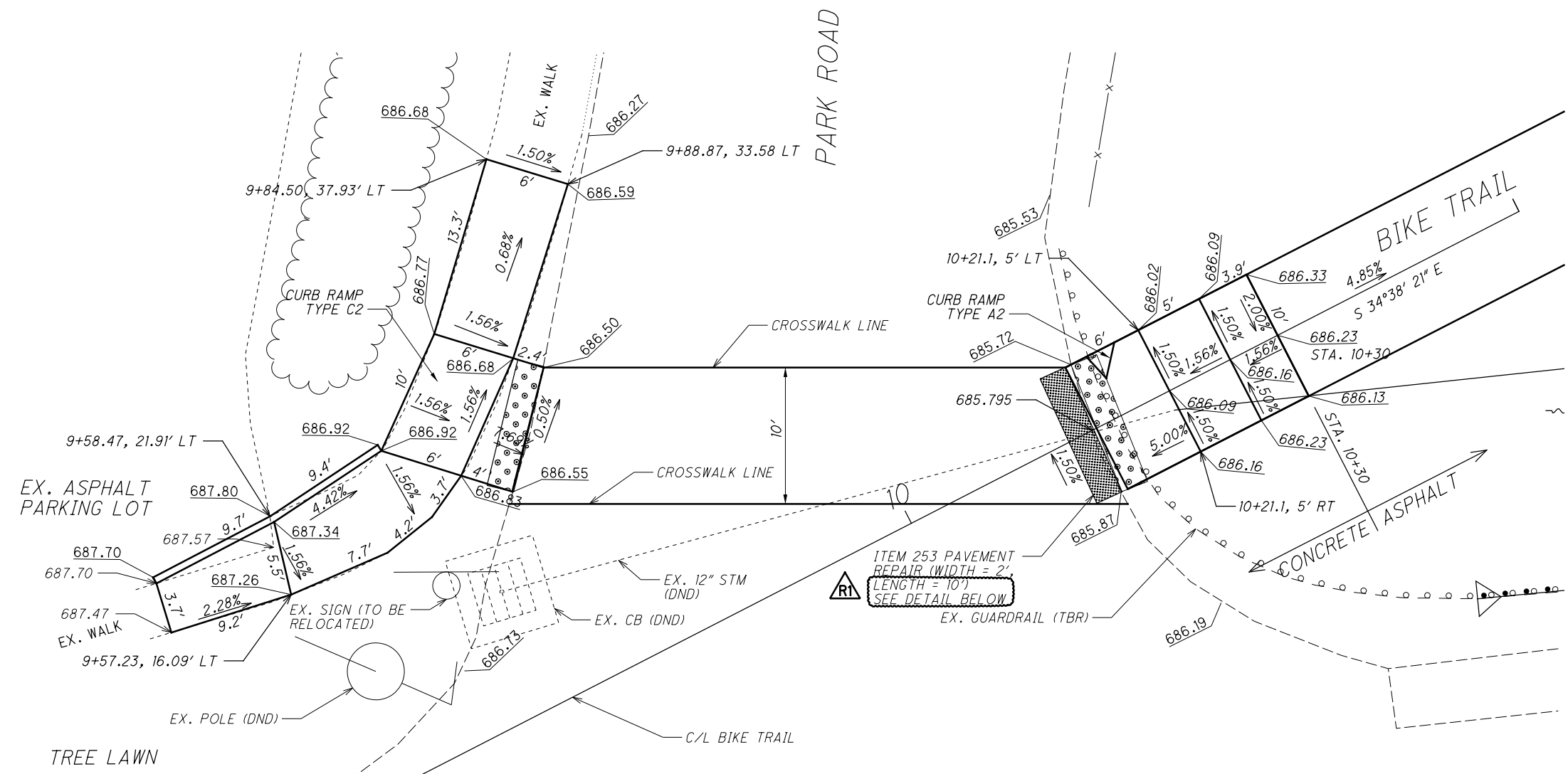
H:\2017\170868\0D0T\Projec+Data\06223\_CCBP\Design\Roadway\Sheets\06223\_GM00.dgn Sheet 4/21/2022 3:31:10 PM Troyer

  
 2.5' HORIZONTAL SCALE IN FEET

CALCULATED BAG CHECKED WCB  
**CURB RAMP DETAILS**  
**PARK ROAD**

**WAR-CLEAR CRK.**  
 94  
 122



S.R. 123

REV.	DATE	DESCRIPTION
R1	4-21-22	ADDED ITEM 253 PAVEMENT REPAIR DETAIL.

**GENERAL NOTES:**

**STANDARD BRIDGE DRAWINGS AND SUPPLEMENTAL SPECIFICATIONS:**

REFER TO THE FOLLOWING STANDARD BRIDGE DRAWINGS:  
 AS-1-15 REVISED 7-17-15  
 AS-2-15 REVISED 1-18-19

AND TO THE FOLLOWING SUPPLEMENTAL SPECIFICATIONS:  
 800 DATED 1-21-22

**DESIGN SPECIFICATIONS:**

THIS STRUCTURE CONFORMS TO THE 8TH EDITION OF THE "LRFD BRIDGE DESIGN SPECIFICATIONS" ADOPTED BY THE AMERICAN ASSOCIATION OF STATE HIGHWAY AND TRANSPORTATION OFFICIALS, 2017, AASHTO "LRFD GUIDE SPECIFICATIONS FOR DESIGN OF PEDESTRIAN BRIDGES, 2009 WITH 2015 INTERIM REVISION, AND THE ODOT BRIDGE DESIGN MANUAL, 2020.

**OPERATIONAL IMPORTANCE:**

A LOAD MODIFIER OF 0.95 HAS BEEN ASSUMED FOR THE DESIGN OF THIS STRUCTURE IN ACCORDANCE WITH THE AASHTO LRFD BRIDGE DESIGN SPECIFICATIONS, ARTICLE 1.3.5 AND THE ODOT BRIDGE DESIGN MANUAL.

**DESIGN LOADING:**

DESIGN LOADING: 0.09 KSF AND H15-44 VEHICLE

**DESIGN DATA:**

CONCRETE CLASS QC2 - COMPRESSIVE STRENGTH 4.5 KSI (SUPERSTRUCTURE)  
 CONCRETE CLASS QC1 - COMPRESSIVE STRENGTH 4.0 KSI (SUBSTRUCTURE)  
 REINFORCING STEEL - MINIMUM YIELD STRENGTH 60 KSI  
 ANCHOR BOLTS - ASTM A325, GALVANIZED  
 SUPERSTRUCTURE STEEL - ASTM A572 (FOR PLATES AND STRUCTURAL SHAPES) AND  
 ASTM A500 (FOR TUBULAR SECTIONS),  
 MINIMUM YIELD STRENGTH OF 50 KSI  
 STEEL PIPE PILE - ASTM A252, GRADE 2 OR 3

**MONOLITHIC WEARING SURFACE:**

MONOLITHIC WEARING SURFACE IS ASSUMED, FOR DESIGN PURPOSES, TO BE 1 INCH THICK.

**DECK PROTECTION METHOD:**

- EPOXY COATED REINFORCING STEEL
- 2 1/2" CONCRETE COVER
- STEEL DRIP STRIP
- SEALING OF CONCRETE SURFACES (EPOXY-URETHANE)

**NON-USE OF ASBESTOS-CONTAINING MATERIALS:**

THE CONTRACTOR SHALL AT NO TIME INCORPORATE ANY MATERIALS WHICH ARE COMPOSED OF OR CONTAIN ANY AMOUNTS OF ASBESTOS. THE SUBSTITUTION OF MATERIALS WHICH CONTAIN ANY AMOUNTS OF ASBESTOS WILL IN NO CIRCUMSTANCES BE ACCEPTABLE. UPON COMPLETION OF THE PROJECT, THE CONTRACTOR SHALL SUBMIT A WRITTEN STATEMENT OF CERTIFICATION ASSERTING THAT NO ASBESTOS CONTAINING MATERIALS WERE USED IN ANY PORTION OF THE CONSTRUCTION.

**PILE DESIGN LOADS (ULTIMATE BEARING VALUE):**

THE ULTIMATE BEARING VALUES (UBVS) ARE 175 AND 157 KIPS PER PILE FOR THE REAR AND FORWARD ABUTMENTS RESPECTIVELY. THE UBVS FOR THE REAR AND FORWARD ABUTMENTS INCLUDE 26 AND 52 KIPS IN THE SCOUR ZONES RESPECTIVELY. THE UBVS ARE 186 AND 196 KIPS FOR PIERS 1 AND 2 RESPECTIVELY. THE UBVS FOR PIERS 1 AND 2 INCLUDE 16 AND 31 KIPS IN THE SCOUR ZONE RESPECTIVELY.

**ABUTMENT PILES:**

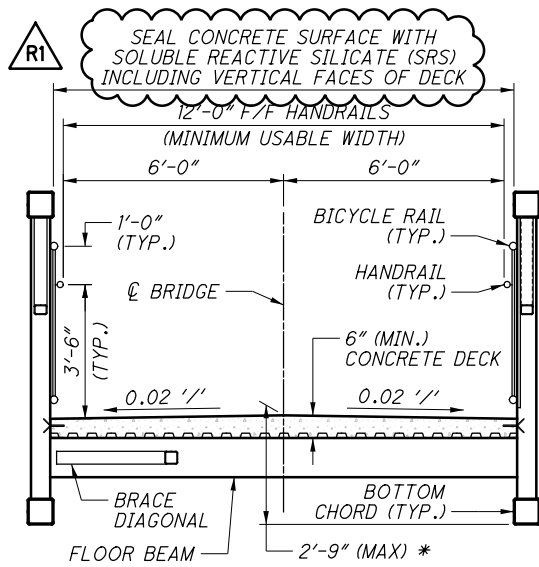
- 10 PILES 35 FEET LONG, ORDER LENGTH (REAR)
- 10 PILES 25 FEET LONG, ORDER LENGTH (FORWARD)
- 2 DYNAMIC LOAD TESTING ITEM

**PIER PILES:**

- 12 PILES 35 FEET LONG, ORDER LENGTH (PIER 1)
- 12 PILES 30 FEET LONG, ORDER LENGTH (PIER 2)
- 2 DYNAMIC LOAD TESTING ITEM

**PILE DRIVING:**

THE MINIMUM RATED ENERGY OF THE HAMMER USED TO INSTALL THE PILES SHALL BE 21,000 FT-LBS. ENSURE THAT STRESSES IN THE PILE DURING DRIVING DO NOT EXCEED 0.9F<sub>y</sub> WHERE F<sub>y</sub>=YIELD STRENGTH OF STEEL.



**TYPICAL SECTION**  
 PREFABRICATED STEEL TRUSS  
 (DESIGNED BY OTHER)

**\* PREFABRICATED BRIDGE CONSTRUCTION REQUIREMENTS:**

IN ORDER TO ENSURE THAT THE PROPOSED PREFABRICATED TRUSS STRUCTURE MEETS THE INTENDED HYDRAULICS RESULTS, THE CONTRACTOR SHALL MAKE SURE THAT THE MANUFACTURER MEETS THE FOLLOWING SUPERSTRUCTURE DEPTH LIMITATIONS AND CRITERIA:

- THE MAXIMUM SUPERSTRUCTURE DEPTH MEASURED FROM THE TOP OF PAVEMENT TO THE BOTTOM OF TRUSS CHORD SHALL BE A VERTICAL DISTANCE OF 2'-9".
- BRIDGE SEAT ADJUSTMENT - THE CONTRACTOR MAY ADJUST THE BRIDGE BEAM SEAT TO FIT THE BRIDGE MANUFACTURER'S DESIGN REQUIREMENTS FOR THE BRIDGE DEPTH IF IT IS DIFFERENT THAN WHAT IS SHOWN ON THESE PLANS. THE CONTRACTOR SHALL SUBMIT ALL DETAILS AND CALCULATIONS OF THE ADJUSTMENTS TO THE ENGINEER FOR APPROVAL PRIOR TO CONSTRUCTION OF THE BRIDGE SEATS. ALL NECESSARY COSTS ASSOCIATED WITH ADJUSTING THE ABUTMENT SEAT ELEVATIONS SHALL BE INCLUDED UNDER ITEM 513, STRUCTURAL STEEL MEMBERS, LEVEL 6, AS PER PLAN.

**BRIDGE SEAT REINFORCING:**

REINFORCING STEEL IN THE VICINITY OF THE BRIDGE SEAT SHALL BE ACCURATELY PLACED TO AVOID INTERFERENCE WITH THE DRILLING OF BEARING ANCHOR HOLES OR THE PRE-SETTING OF BEARING ANCHORS.

**ITEM 513 - STRUCTURAL STEEL MEMBERS, LEVEL 6, AS PER PLAN:**

THIS ITEM SHALL BE DESIGNED AS PER THE "PREFABRICATED BRIDGE SPECIFICATIONS" ON SHEETS 3 THRU 5 OF 10. AND SHALL INCLUDE CONCRETE DECK, BEARINGS, RAILING, JOINT PLATES, AND SEALING OF CONCRETE DECK SURFACES. SHOP DRAWINGS FOR THE BRIDGE SHALL BE SUBMITTED FOR REVIEW PRIOR TO FABRICATION.

**ITEM 516 - BEARING DEVICE, MISC.: ANCHOR BOLTS, GALVANIZED:**

THE SIZE, LENGTH, EMBEDMENT DEPTH, LOCATION, AND PLACEMENT OF ANCHOR BOLTS SHALL BE IN ACCORDANCE WITH THE PREFABRICATED BRIDGE MANUFACTURER'S DRAWINGS. THE ANCHOR BOLTS SHALL BE ASTM A325 STEEL AND GALVANIZED ACCORDING TO 711.02 OF THE CMS.

**ABBREVIATIONS:**

- A.S. - APPROACH SLAB
- @ - AT
- BRGS. - BEARINGS
- BTWN - BETWEEN
- BOT. - BOTTOM
- C.I.P. - CAST-IN-PLACE
- CL - CENTERLINE
- CLR. - CLEAR/CLEARANCE
- C.J. - CONSTRUCTION JOINT
- φ - DIAMETER
- E.F. - EACH FACE
- F.F. - FAR FACE
- '/' - FEET PER FOOT
- FL - FLOWLINE
- FTG. - FOOTING
- F.A. - FORWARD ABUTMENT
- MAX. - MAXIMUM
- N.F. - NEAR FACE
- N.P.C.P.P. - NON-PERFORATED CORRUGATED PLASTIC PIPE
- P.C.P.P. - PERFORATED CORRUGATED PLASTIC PIPE
- R.A. - REAR ABUTMENT
- R.C.P. - ROCK CHANNEL PROTECTION
- SPA. - SPACES
- STA. - STATION
- TYP. - TYPICAL
- W/ - WITH

ESTIMATED QUANTITIES						CALCULATED: MLF	DATE: 04/2021
						CHECKED: TAB	DATE: 04/2021
ITEM	ITEM EXT.	TOTAL	UNIT	DESCRIPTION	ABUTMENTS	PIERS	GENERAL SHEET REF.
503	11100	LS	-	COFFERDAMS AND EXCAVATION BRACING			LS
503	21100	272	CY	UNCLASSIFIED EXCAVATION	125	147	
505	11100	LS	-	PILE DRIVING EQUIPMENT MOBILIZATION			LS
507	00500	1160	FT	12" CAST-IN-PLACE REINFORCED CONCRETE PILES, DRIVEN	500	660	
507	00550	1380	FT	12" CAST-IN-PLACE REINFORCED CONCRETE PILES, FURNISHED	600	780	
509	10000	19065	LB	EPOXY COATED REINFORCING STEEL	7554	11511	
511	40510	28	CY	CLASS QC1 CONCRETE, PIER ABOVE FOOTINGS		28	
511	44110	19	CY	CLASS QC1 CONCRETE, ABUTMENT NOT INCLUDING FOOTING	19		
511	46510	99	CY	CLASS QC1 CONCRETE, FOOTING	47	52	
512	10100	96	SY	SEALING OF CONCRETE SURFACES (EPOXY-URETHANE)	42	54	
512	10400	188	SY	SEALING CONCRETE BRIDGE DECK WITH SRS			188
513	10121	LS	-	STRUCTURAL STEEL MEMBERS, LEVEL 6, AS PER PLAN			LS 2-5/11
513	95000	26	FT	STRUCTURAL STEEL, MISC.: JOINT ARMOR, GALVANIZED	26		7/11
516	46900	24	EACH	BEARING DEVICE, MISC.: ANCHOR BOLTS, GALVANIZED	8	16	2/11
518	21200	25	CY	POROUS BACKFILL WITH GEOTEXTILE FABRIC	25		
518	40000	56	FT	6" PERFORATED CORRUGATED PLASTIC PIPE	56		
518	40010	115	FT	6" NON-PERFORATED CORRUGATED PLASTIC PIPE, INCLUDING SPECIALS	115		
523	20000	4	EACH	DYNAMIC LOAD TESTING	2	2	
526	15000	54	SY	REINFORCED CONCRETE APPROACH SLABS (T=13")			54
526	90010	24	FT	TYPE A INSTALLATION			24
601	32110	218	CY	ROCK CHANNEL PROTECTION, TYPE B WITH AGGREGATE FILTER	106	112	

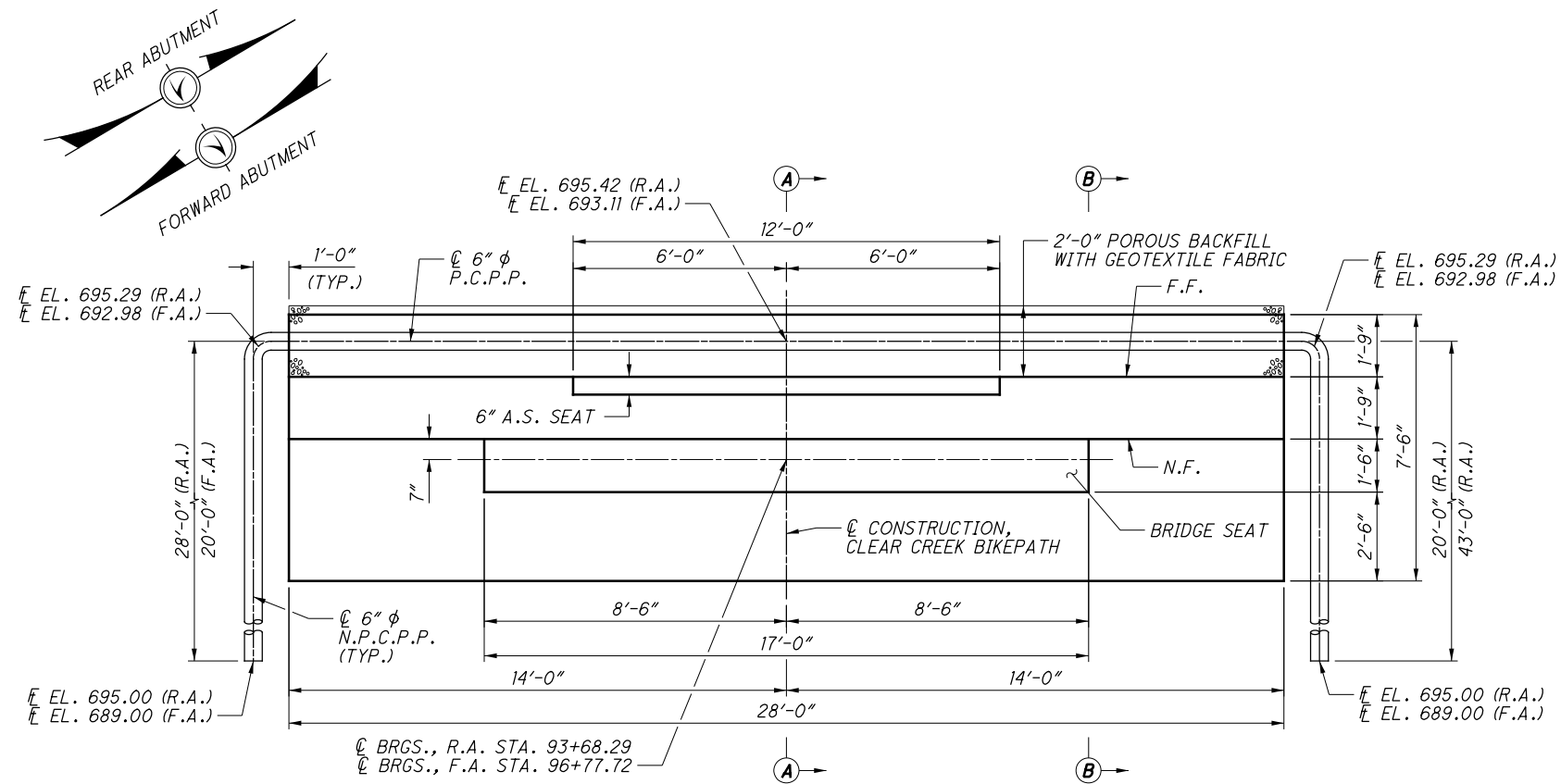
STRUCTURE ESTIMATED QUANTITIES HAVE BEEN CARRIED TO THE GENERAL SUMMARY SHEET 10 OF 122.

REV.	DATE	DESCRIPTION
R1	4-22-22	STRUCTURE QUANTITY REVISED AND ADDED DUE TO SEALING REVISIONS.

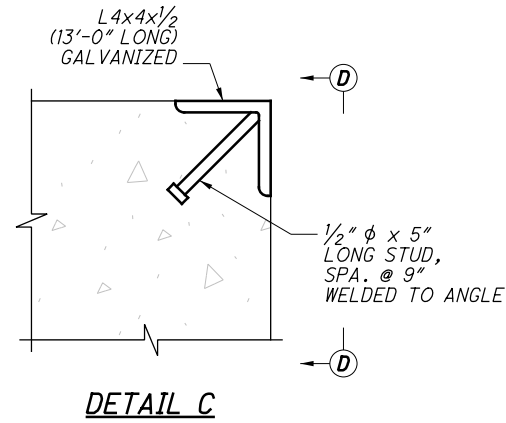
H:\2017\170868\ODOT\ProjectData\06223\_CCBP\Design\Structures\FRAI06223\_Sheets\FRAI06223\_SNO01.dgn Sheet 4/22/2022 2:20:35 PM troyer

ENGINEERS  
 CONSULTANTS  
 8360550  
 DATE 12/2021  
 REVIEWED JPR  
 DRAWN MLF  
 DESIGNED TAB  
 CHECKED TAB

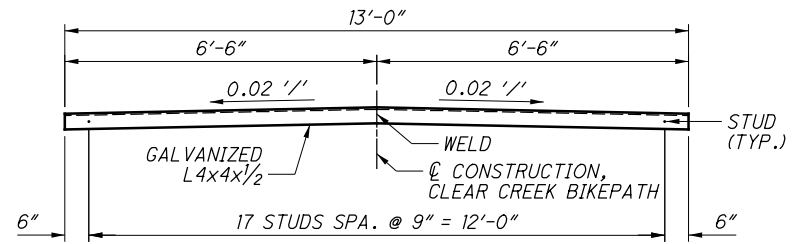
H:\2017\170868\0001\ProjectData\06223\_CCBP\Design\Structures\FRAI06223\_SRO01.dgn Sheet 4/2/2022 8:56:33 AM Troyer



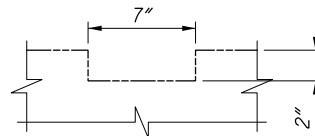
**TYPICAL ABUTMENT PLAN**  
(PILES NOT SHOWN FOR CLARITY)



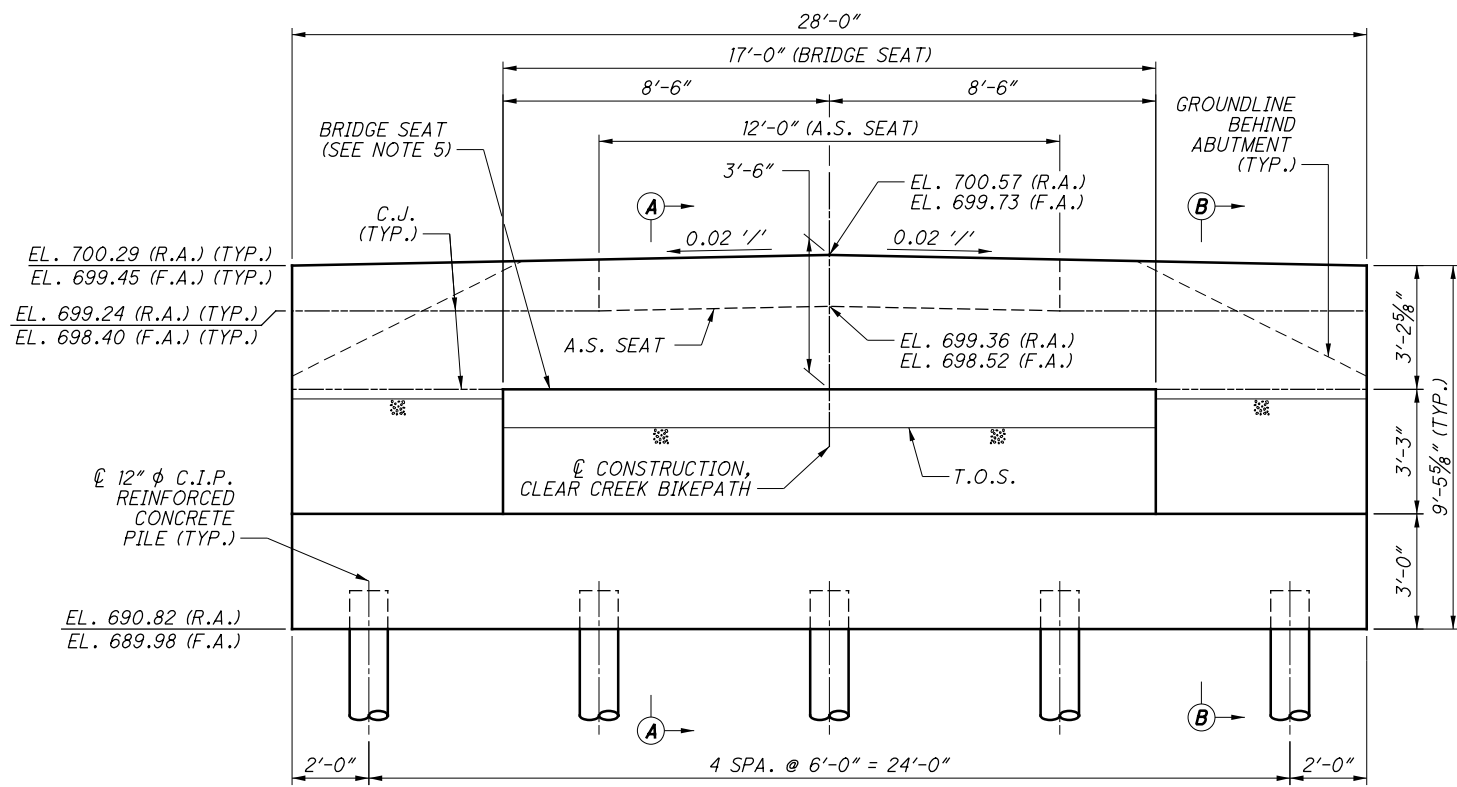
**DETAIL C**



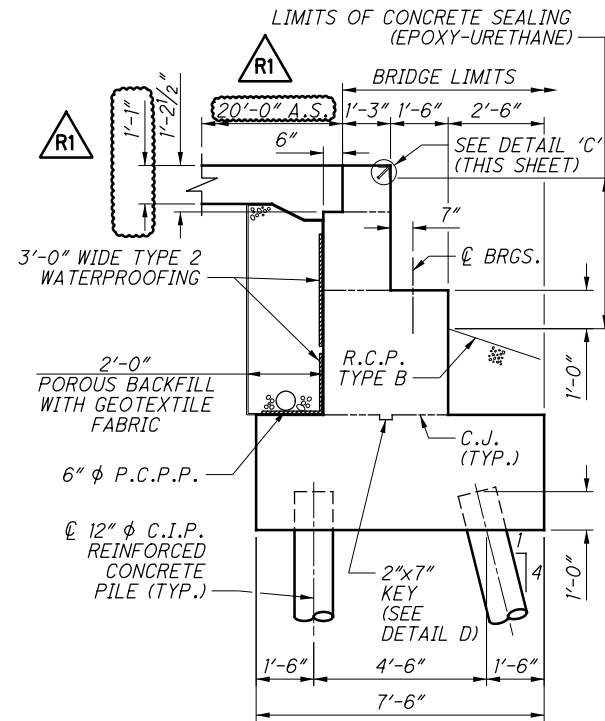
**VIEW D-D**  
(2 ANGLES REQUIRED)



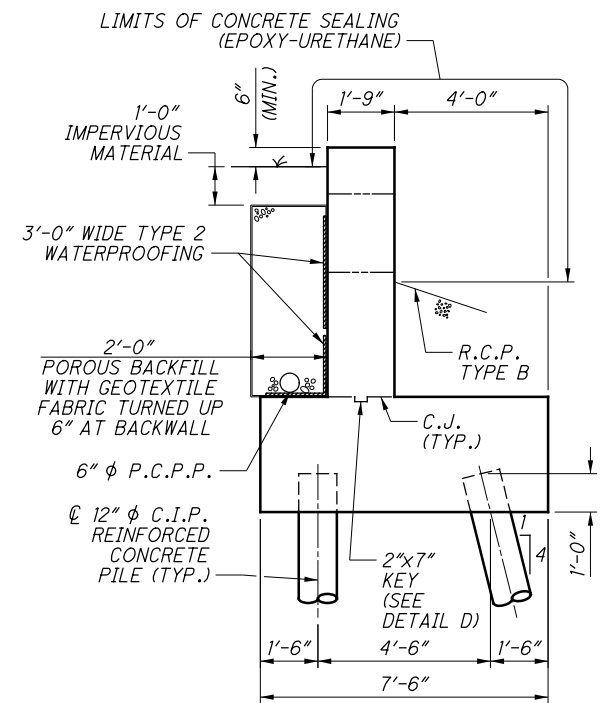
**DETAIL D**



**TYPICAL ABUTMENT ELEVATION**



**SECTION A-A**



**SECTION B-B**

REV.	DATE	DESCRIPTION
R1	4-21-22	UPDATED APPROACH SLAB DIMENSIONS.

**NOTES:**

- FOR ABUTMENT REINFORCING, SEE SHEET 8 OF 11.
- CONSTRUCT ABUTMENT BACKWALLS ONLY AFTER THE PREFABRICATED BRIDGE HAS BEEN SET.
- FOR GENERAL NOTES, SEE SHEETS 2 THRU 5 OF 11.
- FOR THE FOUNDATION LAYOUT, SEE SHEET 6 OF 11.
- TRUSS MEMBER ELEVATIONS MAY VARY DEPENDING ON THE SUPERSTRUCTURE SELECTED, MODIFICATION TO THE ABUTMENT DIMENSIONS AND REINFORCING STEEL LENGTH SHALL BE CONSIDERED INCIDENTAL TO ITEM 513 - STRUCTURAL STEEL MEMBERS, LEVEL 6, AS PER PLAN (SEE NOTES ON SHEETS 3 THRU 5 OF 11).
- FOR APPROACH SLAB DETAILS, SEE SHEET 10 OF 11.

△ DIMENSIONS REVISED 4/20/22



DESIGNED	TAB	CHECKED	TAB
DRAWN	MLF	REVISED	-
REVIEWED	JPR	STRUCTURE FILE NUMBER	8360550
DATE	12/2021	DATE	12/2021

**ABUTMENT DETAILS**  
BRIDGE NO. WAR-CLEAR-00000  
OVER CLEAR CREEK

**WAR-CLEAR CRK.**  
PID No. 106223

**TOTAL NUMBER OF :**  
 7 OWNERSHIPS 0 TOTAL TAKES  
 13 PARCELS 0 OWNERSHIPS W/ STRUCTURES INVOLVED

**GRANTEE:**  
 ALL RIGHT OF WAY TO BE ACQUIRED IN  
 THE NAME OF THE CITY OF FRANKLIN

**ALL AREAS IN ACRES**

PARCEL NO.	OWNER	SHEET NO.	OWNERS RECORD	AUDITOR'S PARCEL	RECORD AREA	TOTAL P.R.O.	GROSS TAKE	P.R.O. IN TAKE	NET TAKE	STRUC-TURE	NET RESIDUE		TYPE FUND	REMARKS	AS ACQUIRED	
											LEFT	RIGHT			BOOK	PAGE
1	CITY OF FRANKLIN	4	D.B. 489, P. 734	04-25-305-018										NO TAKE		
2-SH	BOARD OF EDUCATION OF THE FRANKLIN CITY SCHOOL DISTRICT	4,5,6	D.B. 435, P. 695	04-25-178-001	26.1130(D)	0.6440	1.9603	0.0000	1.9603	N	18.4286	5.0801		BIKE PATH CONSTRUCTION, GRADING, REMOVE 104 TREES EAST 4TH ST. PRO FROM WARREN CO. GIS SHAPE FILES TOTAL NET RESIDUE = 23.5087		
3-WD	DO FAMILY, LLC AN OHIO LIMITED LIABILITY COMPANY	6,7	D.N. 2018-032911	04-25-326-032	15.715(D)	0.3531	1.7159	0.0000	1.7159	N				EXCESS LAND		
3-SH		6,7					0.9909	0.0000	0.9909	N				BIKE PATH CONSTRUCTION, GRADING, REMOVE 29 TREES 4TH ST. PRO FROM WARREN CO. GIS SHAPE FILES		
	TOTAL						2.7068	0.0000	2.7068		12.6551		100% LOCAL			
4-SH	400 GRAND LLC AN OHIO LIMITED LIABILITY COMPANY	7	D.N. 2018-019559	04-25-351-005	53.1865(D)	6.9950	0.0893	0.0000	0.0893	N		46.1022		BIKE PATH CONSTRUCTION, GRADING, REMOVE 3 TREES I-75 PRO FROM RECORD SURVEY		
				04-31-427-001	32.223(D)	2.0234	0.0000	0.0000	0.0000			30.1996		NO TAKE, CONTIGUOUS OWNERSHIP S.R. 123 PRO FROM WARREN CO. GIS SHAPE FILES		
	TOTAL				85.4095	9.0184	0.0893	0.0000	0.0893			76.3018				
5-WD	ADESA OHIO, INC. AN OHIO CORPORATION	8	O.R. 1194, P. 526	04-25-376-002	36.899(D)	6.3780	0.3523	0.3449	0.0074	N				EXCESS LAND		
5-SH		8					0.1828	0.0000	0.1828	N				BIKE PATH CONSTRUCTION, GRADING, REMOVE 11 TREES I-75 PRO FROM RECORD SURVEY		
	TOTAL						0.5351	0.3449	0.1902			30.3308		GRADING		
6-SH	JAMES KEVIN SWALLOW 1/8 INT CARRIE KENDALL 1/8 INT ANNE STANTON EASTON HANSEN 1/4 INT TERRY C. EASTON 1/4 INT CHARLES ARTHUR EASTON 1/4 INT	8,9,10, 11,12,13	D.N. 2018-024365 D.N. 2018-024365 O.R. 3842, P. 569 O.R. 3842, P. 569 O.R. 3842, P. 569	04-25-401-003	40.6647(C)	9.7914	2.1186	0.0000	2.1186	N	19.8691	8.8856		BIKE PATH CONSTRUCTION, GRADING, REMOVE 9 TREES AUDITOR LISTS RECORD AREA OF 54.0862 AC. PARCEL & I-75 AREAS FROM WARREN CO. GIS SHAPE FILES TOTAL NET RESIDUE = 28.7547		
6-T		12,13				0.0000	0.0743	0.0000	0.0743					GRADING, REMOVE 2 TREES		
7-WD	THOMAS ALLAIRE MILLER & LINDA SUE MILLER	13	O.R. 3744 P. 362	04-25-453-003	36.257(D)	0.0000	0.9222	0.0000	0.9222	N				EXCESS LAND		
7-SH		13					0.4007	0.0000	0.4007	N				BIKE PATH & BRIDGE CONSTRUCTION, REMOVE 17 TREES		
	TOTAL						1.3229	0.0000	1.3229			34.9341				
7-T1		13				0.0000	0.1738	0.0000	0.1738					GRADING, REMOVE 3 TREES		
7-T2		13				0.0000	0.4900	0.0000	0.4900					GRADING, REMOVE 29 TREES		
8-SH	JON V. & BRENDA S. HENDERSON	13	O.R. 619, P. 345	04-25-253-003	6.171(D)	0.6432	0.0129	0.0000	0.0129	N	5.5149			BIKE PATH CONSTRUCTION, GRADING		
9	CITY OF SPRINGBORO OHIO	13	O.R. 5734, P. 213	04-25-476-001										NO TAKE		

R:\20000\20233\_Microstation Project\106223\_WAR-CLEAR-CRK\_Design\RW\_Sheets\106223\_RS001.dgn Sheet 2/17/2022 1:35:33 PM Repenning

FEDERAL PROJECT NO. E171401  
 PID NO. 106223  
 STATE JOB NO. 0000  
 R/W DESIGNER KAR  
 R/W REVIEWER TAB  
**SUMMARY OF ADDITIONAL RIGHT OF WAY**  
**WAR-CLEAR CRK**

NOTE: UNDER NO CIRCUMSTANCES ARE TEMPORARY EASEMENTS TO BE USED FOR STORAGE OF MATERIAL OR EQUIPMENT BY THE CONTRACTOR UNLESS NOTED OTHERWISE.

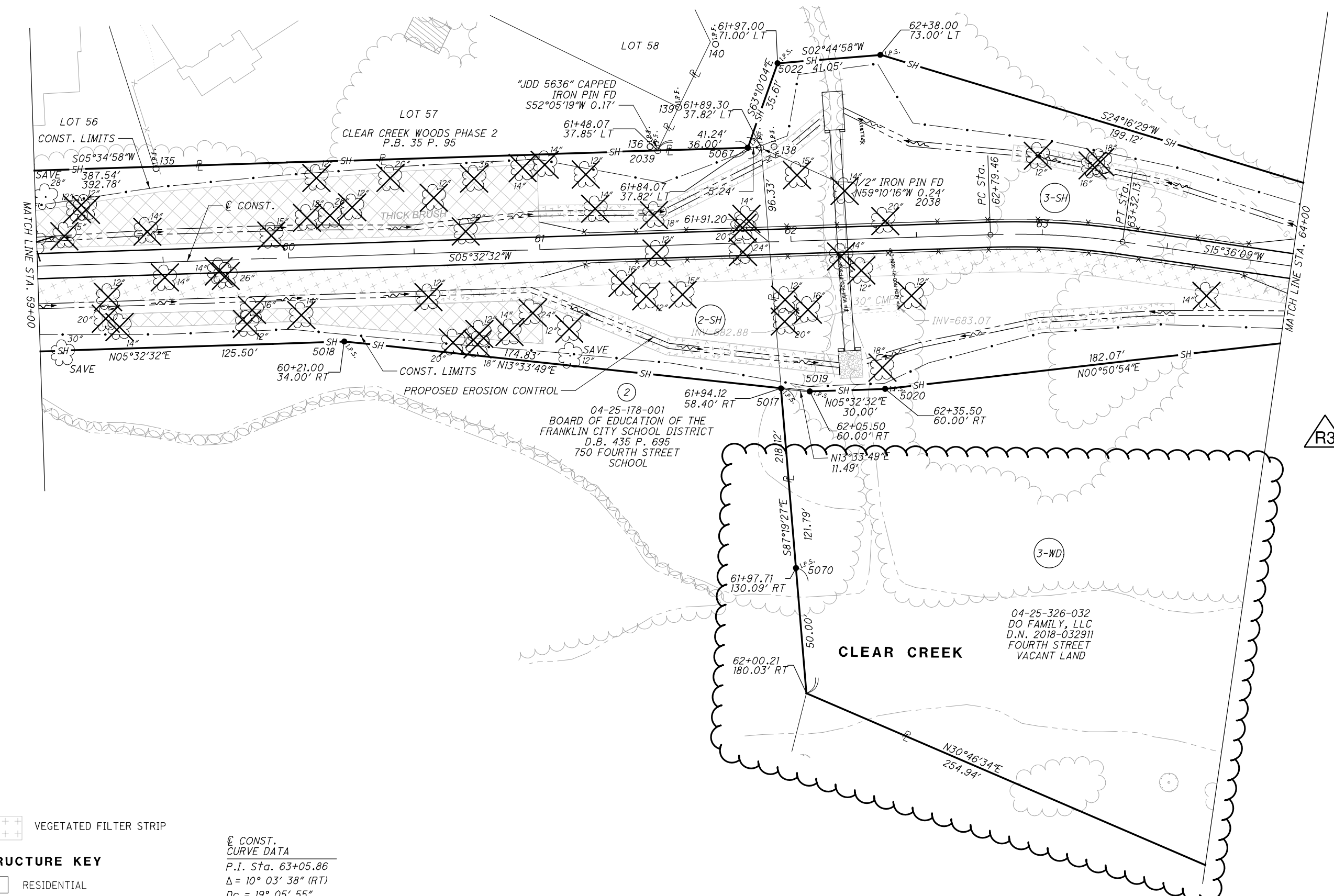
(C) = CALCULATED AREA  
 (D) = DEED AREA  
 NET RESIDUE = RECORD AREA - TOTAL PRO - NET TAKE  
 NET TAKE = GROSS TAKE - PRO IN TAKE

NOTE: ALL TEMPORARY PARCELS TO BE OF 12 MONTH DURATION.

TYPES OF TITLE LEGEND:  
 SH = STANDARD HIGHWAY EASEMENT TO BE ACQUIRED IN THE NAME OF THE CITY OF FRANKLIN.  
 T = TEMPORARY EASEMENT TO BE ACQUIRED IN THE NAME OF THE CITY OF FRANKLIN.  
 WD = WARRANTY DEED TO BE ACQUIRED IN THE NAME OF THE CITY OF FRANKLIN.

REV. BY	DATE	DESCRIPTION	REV.
KAR	02-18-22	ADDED 3-WD, 5-WD AND 7-WD	R3
MAM	05-06-21	REVISE PARCEL 3-SH AREA	
DATE COMPLETED			

R:\20000\20233\Microstation Project\106223\_WAR-CLEAR-CRK\_Design\RW\_Base\maps\106223\_BR003.dgn 59-64 2/17/2022 1:45:44 PM repenlmg




++ VEGETATED FILTER STRIP

**STRUCTURE KEY**  
 □ RESIDENTIAL  
 ■ COMMERCIAL  
 ▨ OUT-BUILDING

Ⓢ CONST.  
 CURVE DATA  
 P.I. Sta. 63+05.86  
 $\Delta = 10^\circ 03' 38''$  (RT)  
 $D_c = 19^\circ 05' 55''$   
 $R = 300.00'$   
 $T = 26.41'$   
 $L = 52.68'$   
 $E = 1.16'$   
 $C = 52.61'$   
 $C.B. = S 10^\circ 34' 21'' W$

WARREN COUNTY  
 CITY OF FRANKLIN  
 FRANKLIN TOWNSHIP SECTION NO. 25  
 TOWNSHIP 2 EAST, RANGE 5 NORTH  
 BETWEEN THE MIAMI RIVERS

REV. BY	DATE	DESCRIPTION	REV.
KAR	02-18-22	ADDED 3-WD	R3
MAM	05-06-21	REVISE PARCEL 3-SH	
DATE COMPLETED			



PID NO. **106223**

R/W DESIGNER: KAR  
 R/W REVIEWER: TAB

**RIGHT OF WAY - DETAIL SHEET**  
**STA. 59+00 TO STA. 64+00**

**WAR-CLEAR-CRK.**

6 / 16

112  
122



R3

3-WD

2-SH

3-SH

WARREN COUNTY  
CITY OF FRANKLIN  
FRANKLIN TOWNSHIP SECTION NO. 25  
TOWNSHIP 2 EAST, RANGE 5 NORTH  
BETWEEN THE MIAMI RIVERS



PID NO.  
**106223**

R/W DESIGNER  
KAR  
R/W REVIEWER  
TAB

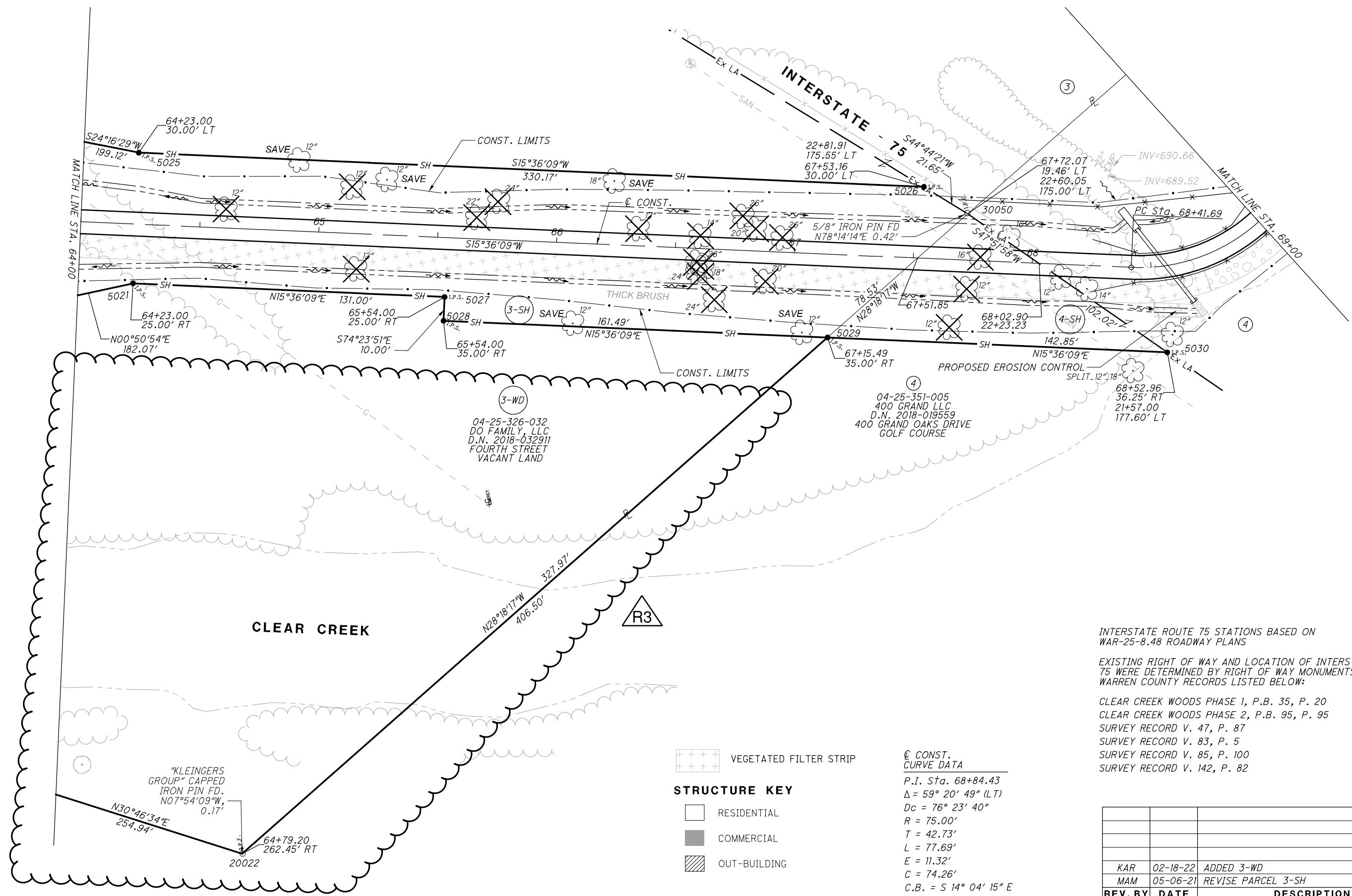
**RIGHT OF WAY DETAIL SHEET**  
**STA. 64+00 TO STA. 69+00**

**WAR-CLEAR-CRK.**

7 / 16

113  
122

R:\20000\20233\Microstation Project\06223\_WAR-CLEAR-CRK\_Design\RW\_Base\maps\06223\_BR003.dgn 64-69 2/17/2022 1:46:18 PM repenningk



+++++ VEGETATED FILTER STRIP

- STRUCTURE KEY**
- RESIDENTIAL
  - COMMERCIAL
  - OUT-BUILDING

⊙ CONST. CURVE DATA  
P.I. Sta. 68+84.43  
Δ = 59° 20' 49" (LT)  
Dc = 76° 23' 40"  
R = 75.00'  
T = 42.73'  
L = 77.69'  
E = 11.32'  
C = 74.26'  
C.B. = S 14° 04' 15" E

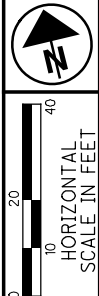
INTERSTATE ROUTE 75 STATIONS BASED ON WAR-25-8.48 ROADWAY PLANS

EXISTING RIGHT OF WAY AND LOCATION OF INTERSTATE ROUTE 75 WERE DETERMINED BY RIGHT OF WAY MONUMENTS FOUND AND WARREN COUNTY RECORDS LISTED BELOW:

CLEAR CREEK WOODS PHASE 1, P.B. 35, P. 20  
CLEAR CREEK WOODS PHASE 2, P.B. 95, P. 95  
SURVEY RECORD V. 47, P. 87  
SURVEY RECORD V. 83, P. 5  
SURVEY RECORD V. 85, P. 100  
SURVEY RECORD V. 142, P. 82

REV. BY	DATE	DESCRIPTION	REV.
KAR	02-18-22	ADDED 3-WD	R3
MAM	05-06-21	REVISE PARCEL 3-SH	
	DATE COMPLETED		

WARREN COUNTY  
CITY OF FRANKLIN  
FRANKLIN TOWNSHIP SECTION NO. 25  
TOWNSHIP 2 EAST, RANGE 5 NORTH  
BETWEEN THE MIAMI RIVERS



PID NO. 106223  
R/W DESIGNER KAR  
R/W REVIEWER TAB

RIGHT OF WAY DETAIL SHEET  
STA. 69+00 TO STA. 74+00

WAR-CLEAR-CRK.

⑥  
04-25-401-003  
JAMES KEVIN SWALLOW 1/8 INT  
CARRIE KENDALL 1/8 INT  
D.N. 2018-024365  
ANNE STANTON EASTON HANSEN 1/4 INT  
TERRY C. EASTON 1/4 INT  
CHARLES ARTHUR EASTON 1/4 INT  
O.R. 3842 P. 569  
840 FOURTH STREET  
VACANT LAND

INTERSTATE 75 CURVE DATA  
P.I. Sta. 24+83.28  
 $\Delta = 6^\circ 27' 00''$  (LT)  
Dc = 0' 20' 00"  
R = 17,188.74'  
T = 968.52'  
L = 1,935.00'  
E = 27.26'  
C = 1,933.98'  
C.B. = N 45° 29' 42" E

③  
04-25-326-032  
DO FAMILY, LLC  
D.N. 2018-032911  
FOURTH STREET  
VACANT LAND

④  
04-25-351-005  
400 GRAND LLC  
D.N. 2018-019559  
400 GRAND OAKS DRIVE  
GOLF COURSE

⑤  
04-25-376-002  
ADESA OHIO, INC.  
O.R. 1194 P. 526  
ROUTE 123  
COMMERCIAL

SEE SHEET 13 FOR POINT OF COMMENCEMENT OF PARCEL 5-SH AND 6-SH.  
INTERSTATE ROUTE 75 STATIONS BASED ON WAR-25-8.48 ROADWAY PLANS  
EXISTING RIGHT OF WAY AND LOCATION OF INTERSTATE ROUTE 75 WERE DETERMINED BY RIGHT OF WAY MONUMENTS FOUND AND WARREN COUNTY RECORDS LISTED BELOW:  
CLEAR CREEK WOODS PHASE 1, P.B. 35, P. 20  
CLEAR CREEK WOODS PHASE 2, P.B. 95, P. 95  
SURVEY RECORD V. 47, P. 87  
SURVEY RECORD V. 83, P. 5  
SURVEY RECORD V. 85, P. 100  
SURVEY RECORD V. 142, P. 82

VEGETATED FILTER STRIP

**STRUCTURE KEY**

- RESIDENTIAL
- COMMERCIAL
- OUT-BUILDING

CONST. CURVE DATA	CONST. CURVE DATA	CONST. CURVE DATA
P.I. Sta. 68+84.43	P.I. Sta. 71+45.70	P.I. Sta. 74+17.05
$\Delta = 59^\circ 20' 49''$ (LT)	$\Delta = 62^\circ 41' 04''$ (LT)	$\Delta = 16^\circ 44' 15''$ (LT)
Dc = 76° 23' 40"	Dc = 76° 23' 40"	Dc = 19° 05' 55"
R = 75.00'	R = 75.00'	R = 300.00'
T = 42.73'	T = 45.68'	T = 44.13'
L = 77.69'	L = 82.05'	L = 87.64'
E = 11.32'	E = 12.81'	E = 3.23'
C = 74.26'	C = 78.02'	C = 87.33'
C.B. = S 14° 04' 15" E	C.B. = S 75° 05' 12" E	C.B. = N 65° 12' 08" E

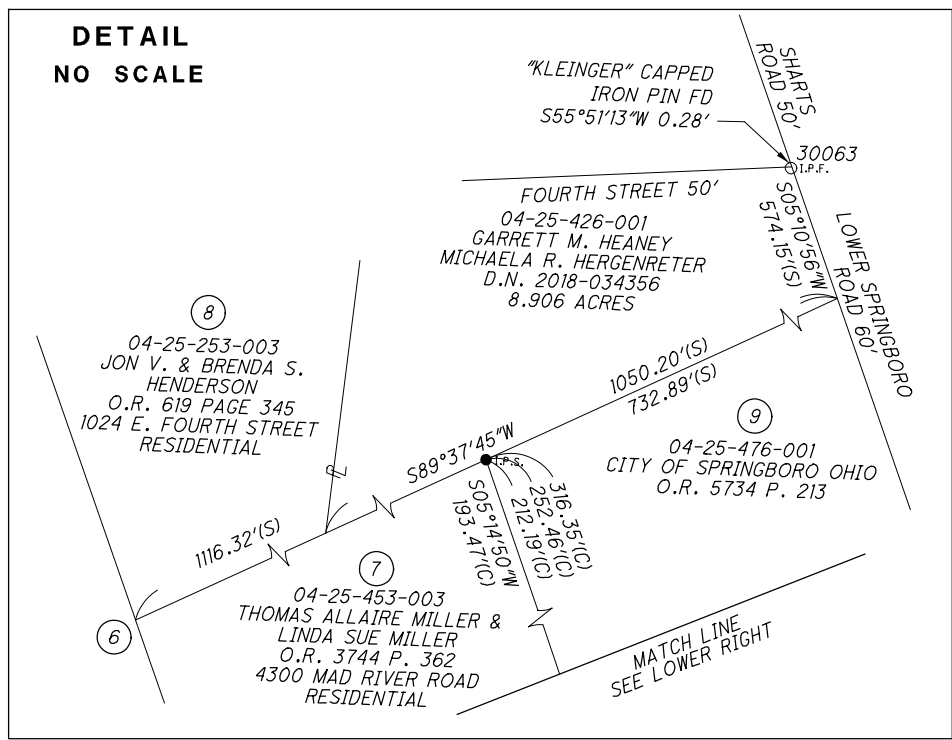
CURVE DATA						
C6	C7	C10	C14	C15	C16	
R=337.00'	R=280.00'	R=337.00'	R=70.00'	R=63.30'	R=17188.74'	
L=88.26'	L=81.80'	L=10.18'	L=47.99'	L=26.12'	L=50.70'	
$\Delta=15^\circ 00' 23''$	$\Delta=16^\circ 44' 15''$	$\Delta=01^\circ 43' 53''$	$\Delta=39^\circ 16' 48''$	$\Delta=23^\circ 38' 18''$	$\Delta=00^\circ 10' 08''$	
T=44.39'	T=5.09'	T=5.09'	T=24.98'	T=13.25'	T=25.35'	
C=88.01'	C=81.50'	C=10.18'	C=47.06'	C=25.93'	C=50.70'	
C.B.=S 64° 20' 12" W	C.B.=N 65° 12' 08" E	C.B.=S 72° 42' 19" W	C.B.=N 86° 47' 20" W	C.B.=N 55° 33' 49" W	C.B.=N 46° 28' 04" E	

REV. BY	DATE	DESCRIPTION	REV.
KAR	03-03-22	ADDED 5 PINS TO BE SET ON 5-WD	R3
KAR	02-18-22	ADDED 5-WD	R3
	DATE COMPLETED		

R:\20000\20233\Microstation Project\106223\_WAR-CLEAR-CRK\Design\RW\Basemaps\106223\_BR003.dgn 69-74 3/3/2022 10:50:29 AM repenningk



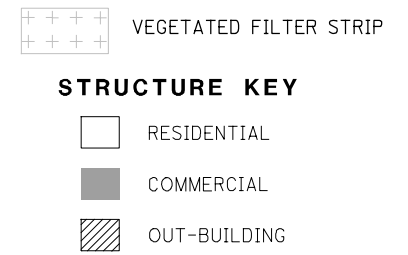
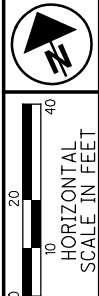
DETAIL  
NO SCALE



CURVE DATA

C3	C12	CONST. CURVE DATA	CONST. CURVE DATA
R=75.00'	L=120.00'	P.I. Sta. 92+88.89	P.I. Sta. 97+27.54
L=103.25'	L=41.83'	Δ = 89° 35' 42" (RT)	Δ = 23° 21' 39" (LT)
Δ = 78° 52' 34"	Δ = 19° 58' 13"	Dc = 57° 17' 45"	Dc = 57° 17' 45"
T=61.69'	T=21.13'	R = 100.00'	R = 100.00'
C=95.29'	C=41.61'	T = 99.30'	T = 20.67'
C.B.=S 70° 29' 18" W	C.B.=N 69° 20' 23" W	L = 156.37'	L = 40.77'
		E = 40.92'	E = 2.11'
		C = 140.92'	C = 40.49'
		C.B. = N 75° 50' 52" E	C.B. = S 71° 02' 06" E
C11	C13		
R=75.00'	R=80.00'		
L=14.03'	L=24.07'		
Δ = 10° 43' 08"	Δ = 17° 14' 28"		
T=7.04'	T=12.13'		
C=14.01'	C=23.98'		
C.B.=N 64° 42' 51" W	C.B.=S 67° 58' 31" E		

WARREN COUNTY  
CITY OF FRANKLIN  
FRANKLIN TOWNSHIP SECTION NO. 25  
TOWNSHIP 2 EAST, RANGE 5 NORTH  
BETWEEN THE MIAMI RIVERS



R/W DESIGNER  
KAR

R/W REVIEWER  
TAB

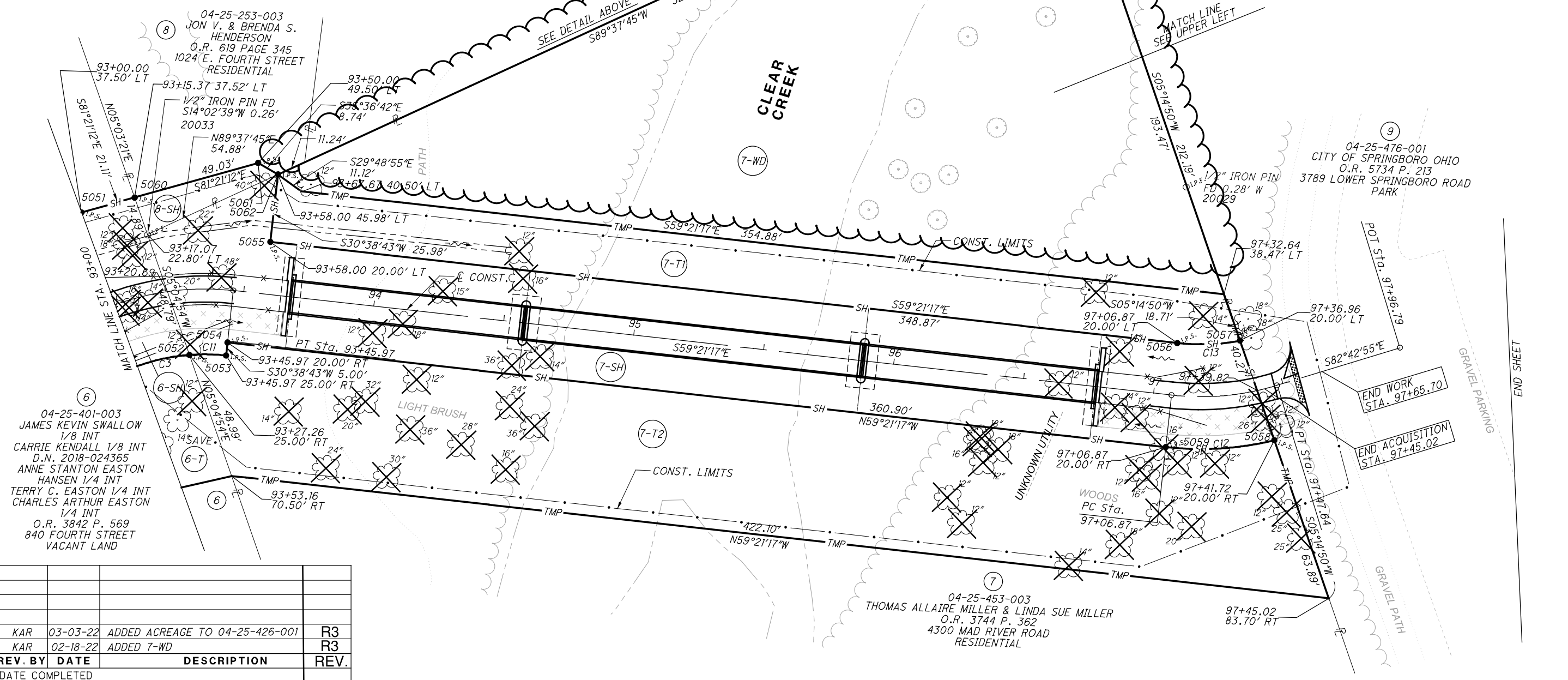
PID NO.  
**106223**

RIGHT OF WAY DETAIL SHEET  
STA. 93+00 TO STA. 97+96.79

WAR-CLEAR-CRK.

13 / 16  
119  
122

R:\20000\20233\Microstation Project\106223\_WAR-CLEAR-CRK\_Design\RW\_Base\maps\106223\_BR003.dgn 93- 3/3/2022 10:52:00 AM repennig



REV. BY	DATE	DESCRIPTION	REV.
KAR	03-03-22	ADDED ACREAGE TO 04-25-426-001	R3
KAR	02-18-22	ADDED 7-WD	R3
	DATE COMPLETED		



R:\20000\20233\_Microstation\_Project\06223\_WAR-CLEAR-CRK\_Design\RW\_Sheets\06223\_RB001.dgn Page 15 2/17/2022 13:54 PM repenningk

OHIO STATE PLANE GRID COORDINATES SOUTH ZONE NAD83 (1986) US SURVEY FEET							MONUMENTS TO BE SET DURING CONSTRUCTION	MONUMENTS TO BE SET AFTER CONSTRUCTION
C/L OF CLEAR CREEK BIKE PATH								
NUMBER	STATION	OFFSET (ft)	RT/LT	NORTH (ft)	EAST (ft)	FEATURE	DESCRIPTION	
20011	51+48.26	-134.29	LT	570280.92	1464254.42	IPIN	5/8" IRON PIN FOUND	
20013				570091.90	1463824.67	IPIPE	3/4" IRON PIPE FOUND	
20014	57+43.27	-994.78	LT	570730.84	1465452.78	IPIN	1/2" IRON PIN FOUND	
20015	57+07.84	-822.63	LT	570721.67	1465150.50	IPIN	1/2" IRON PIN FOUND	
20016	59+05.33	-188.01	LT	569799.09	1465060.32	IPIN	1/2" IRON PIN FOUND	
20017	53+30.16	-542.72	LT	570053.55	1465386.54	IPIN	1/2" IRON PIN FOUND	
20022	64+79.35	262.30	RT	569321.93	1464535.10	IPIN	"KLEINGERS-GRUP" CAPPED IRON PIN FOUND	
20023	53+93.72	436.47	RT	569661.66	1464360.53	IPIN	1" PINCHED IRON PIN FOUND	
20024	54+08.10	446.34	RT	569642.95	1464103.29	IPIN	5/8" IRON PIN FOUND	
20029	97+03.65	-79.67	LT	569547.04	1466978.26	IPIN 1/2IN	1/2" IRON PIN FOUND	
20032	91+12.05	159.19	RT	569477.82	1466589.66	IPIN 1/2IN	1/2" IRON PIN FOUND	
20033	93+17.07	-22.54	RT	569693.64	1466608.77	IPIN 1/2IN	1/2" IRON PIN FOUND	
20034	92+72.85	-1260.04	LT	570908.68	1466313.58	IPIN BDSK	IRON PIN WITH BRASS DISK STAMPED "800"	
20035	57+18.87	-1401.23	LT	571188.48	1465504.10	IPIN BDSK-801	IRON PIN WITH BRASS DISK STAMPED "801"	
30002				571001.14	1470149.09	IPIN BDSK-250	IRON PIN WITH BRASS DISK WAR. CO. MON. 250	
30003				576071.49	1461215.57	IPIN BDSK-275	IRON PIN WITH BRASS DISK WAR. CO. MON. 275	
30004				565873.96	1456062.52	IPIN BDSK-202	IRON PIN WITH BRASS DISK WAR. CO. MON. 202	
30008	97+70.35	854.58	RT	568613.14	1466892.88	IPIN	1/2" IRON PIN FOUND	
30010	86+79.17	1044.59	RT	568650.28	1467124.92	IPIN	1/2" IRON PIN FOUND	
30014	85+26.67	510.55	RT	568791.62	1466586.63	IPIN	1/2" IRON PIN FOUND	
30017	83+87.96	297.23	RT	568692.26	1466140.65	IPIN	1/2" IRON PIN FOUND	
30050	67+71.87	-19.84	LT	568964.28	1464728.24	IPIN	5/8" IRON PIN FOUND	
30052	79+98.99	228.07	RT	568751.81	1465646.02	IPIN	1" IRON PIN FOUND	
30055	72+84.39	-33.95	LT	568743.06	1465003.35	IPIN	1/2" IRON PIN FOUND	
30060	93+79.85	-883.52	LT	570403.67	1467109.42	IPIN	1/2" IRON PIN FOUND	
30061	96+70.58	-1056.96	LT	570404.70	1467447.95	RSPK	RAILROAD SPIKE FOUND	
30062	93+66.98	-1027.13	LT	570380.87	1467429.65	IPIN	1/2" IRON PIN FOUND	
30063				570272.76	1467776.76	IPIN	"KLEINGER" CAPPED IRON PIN FOUND	
30276				567856.40	1471080.65	CMON	CONCRETE MONUMENT FOUND	
5001	51+19.94	38.47	RT	570105.17	1464239.42	IPINS	5/8" / 30" REBAR W/ "KS ASSOC" CAP SET	1
5002	51+43.04	-55.90	LT	570202.18	1464247.70	IPINS	5/8" / 30" REBAR W/ "KS ASSOC" CAP SET	1
5003	53+16.00	50.00	RT	570053.60	1464402.78	IPINS	5/8" / 30" REBAR W/ "KS ASSOC" CAP SET	1
5004	54+90.00	40.00	RT	570010.74	1464571.71	IPINS	5/8" / 30" REBAR W/ "KS ASSOC" CAP SET	1
5005	54+67.50	-45.00	LT	570098.57	1464575.84	IPINS	5/8" / 30" REBAR W/ "KS ASSOC" CAP SET	1
5006	55+37.00	-25.00	LT	570058.58	1464636.10	IPINS	5/8" / 30" REBAR W/ "KS ASSOC" CAP SET	1
5007	55+86.86	-26.00	LT	570013.76	1464778.06	IPINS	5/8" / 30" REBAR W/ "KS ASSOC" CAP SET	1
5008	56+85.86	40.00	RT	569951.77	1464758.48	IPINS	5/8" / 30" REBAR W/ "KS ASSOC" CAP SET	1
5009	57+86.00	-25.00	LT	569945.31	1464870.06	IPINS	5/8" / 30" REBAR W/ "KS ASSOC" CAP SET	1
5010	91+05.50	-20.00	LT	569564.63	1466432.77	IPINS	5/8" / 30" REBAR W/ "KS ASSOC" CAP SET	1
5011	53+21.00	40.00	RT	569886.05	1464828.15	IPINS	5/8" / 30" REBAR W/ "KS ASSOC" CAP SET	1
5012	53+47.50	66.00	RT	569862.53	1464807.89	IPINS	5/8" / 30" REBAR W/ "KS ASSOC" CAP SET	1
5013	58+95.50	34.00	RT	569630.32	1464840.30	IPINS	5/8" / 30" REBAR W/ "KS ASSOC" CAP SET	1
5014	73+72.91	37.00	RT	568700.04	1465108.32	IPINS	5/8" / 30" REBAR W/ "KS ASSOC" CAP SET	1
5015	77+00.00	28.00	RT	568879.72	1465392.89	IPINS	5/8" / 30" REBAR W/ "KS ASSOC" CAP SET	1
5016	91+05.50	-25.00	LT	569567.21	1466428.48	IPINS	5/8" / 30" REBAR W/ "KS ASSOC" CAP SET	1
5017	01+94.12	58.40	RT	509535.44	1464787.18	IPINS	5/8" / 30" REBAR W/ "KS ASSOC" CAP SET	1
5018	60+21.00	34.00	RT	569705.40	1464828.18	IPINS	5/8" / 30" REBAR W/ "KS ASSOC" CAP SET	1
5019	62+05.50	60.00	RT	569524.28	1464784.48	IPINS	5/8" / 30" REBAR W/ "KS ASSOC" CAP SET	1
5020	62+35.50	60.00	RT	569494.41	1464781.59	IPINS	5/8" / 30" REBAR W/ "KS ASSOC" CAP SET	1
5021	64+23.00	25.00	RT	569312.36	1464776.89	IPINS	5/8" / 30" REBAR W/ "KS ASSOC" CAP SET	1
5022	61+97.00	-71.00	LT	569520.08	1464915.69	IPINS	5/8" / 30" REBAR W/ "KS ASSOC" CAP SET	1
5023	62+38.00	-73.00	LT	569479.08	1464913.72	IPINS	5/8" / 30" REBAR W/ "KS ASSOC" CAP SET	1
5025	64+23.00	-30.00	LT	569297.57	1464831.86	IPINS	5/8" / 30" REBAR W/ "KS ASSOC" CAP SET	1
5026	67+53.16	-30.00	LT	568979.57	1464743.06	IPINS	5/8" / 30" REBAR W/ "KS ASSOC" CAP SET	1
5027	65+54.00	25.00	RT	569186.18	1464743.66	IPINS	5/8" / 30" REBAR W/ "KS ASSOC" CAP SET	1



REV	DATE	DESCRIPTION
R3	3-10-22	ADDED MONUMENTS

PID NO. **106223**

R/W DESIGNER: KAR  
R/W REVIEWER: TAB

**MONUMENT TABLE**

**WAR-CLEAR CRK**

HORIZONTAL SCALE IN FEET

15 / 16

121  
122

OHIO STATE PLANE GRID COORDINATES SOUTH ZONE NAD83 (1986) US SURVEY FEET							MONUMENTS TO BE SET DURING CONSTRUCTION	MONUMENTS TO BE SET AFTER CONSTRUCTION
C/L OF CLEAR CREEK BIKE PATH								
NUMBER	STATION	OFFSET (ft)	RT/LT	NORTH (ft)	EAST (ft)	FEATURE	DESCRIPTION	
5028	65+54.00	35.00	RT	569188.87	1464734.02	IPINS	5/8" / 30" REBAR W/ "KS ASSOC" CAP SET	1
5029	67+15.49	35.00	RT	569033.33	1464690.59	IPINS	5/8" / 30" REBAR W/ "KS ASSOC" CAP SET	1
5030	68+52.96	36.25	RT	568895.75	1464652.17	IPINS	5/8" / 30" REBAR W/ "KS ASSOC" CAP SET	1
5031	71+65.15	39.91	RT	568637.00	1464894.51	IPINS	5/8" / 30" REBAR W/ "KS ASSOC" CAP SET	1
5032	72+57.38	-20.00	LT	568722.04	1464981.38	IPINS	5/8" / 30" REBAR W/ "KS ASSOC" CAP SET	1
5033	73+03.43	-20.00	LT	568735.06	1465025.56	IPINS	5/8" / 30" REBAR W/ "KS ASSOC" CAP SET	1
5034	73+81.98	37.00	RT	568703.07	1465118.05	IPINS	5/8" / 30" REBAR W/ "KS ASSOC" CAP SET	1
5035	73+72.91	-20.00	LT	568754.72	1465092.20	IPINS	5/8" / 30" REBAR W/ "KS ASSOC" CAP SET	1
5036	77+00.00	37.00	RT	568872.18	1465397.81	IPINS	5/8" / 30" REBAR W/ "KS ASSOC" CAP SET	1
5037	74+60.55	-20.00	LT	568788.90	1465166.19	IPINS	5/8" / 30" REBAR W/ "KS ASSOC" CAP SET	1
5038	74+60.55	37.00	RT	568741.19	1465197.38	IPINS	5/8" / 30" REBAR W/ "KS ASSOC" CAP SET	1
5039	77+56.16	-20.00	LT	568950.62	1465413.64	IPINS	5/8" / 30" REBAR W/ "KS ASSOC" CAP SET	1
5040	77+56.16	28.00	RT	568910.44	1465439.90	IPINS	5/8" / 30" REBAR W/ "KS ASSOC" CAP SET	1
5041	79+45.31	-20.00	LT	569002.32	1465605.22	IPINS	5/8" / 30" REBAR W/ "KS ASSOC" CAP SET	1
5042	79+45.31	28.00	RT	568954.39	1465602.74	IPINS	5/8" / 30" REBAR W/ "KS ASSOC" CAP SET	1
5043	83+12.23	-20.00	LT	568983.38	1465971.65	IPINS	5/8" / 30" REBAR W/ "KS ASSOC" CAP SET	1
5044	83+12.23	20.00	RT	568943.43	1465969.58	IPINS	5/8" / 30" REBAR W/ "KS ASSOC" CAP SET	1
5045	85+28.49	-20.00	LT	569070.30	1466135.15	IPINS	5/8" / 30" REBAR W/ "KS ASSOC" CAP SET	1
5046	86+28.49	20.00	RT	569049.67	1466169.42	IPINS	5/8" / 30" REBAR W/ "KS ASSOC" CAP SET	1
5047	91+05.50	20.00	RT	569544.00	1466467.04	IPINS	5/8" / 30" REBAR W/ "KS ASSOC" CAP SET	1
5048	91+05.50	25.00	RT	569541.42	1466471.32	IPINS	5/8" / 30" REBAR W/ "KS ASSOC" CAP SET	1
5049	92+28.50	-35.09	LT	569683.15	1466498.29	IPINS	5/8" / 30" REBAR W/ "KS ASSOC" CAP SET	1
5050	91+89.60	25.00	RT	569613.47	1466514.70	IPINS	5/8" / 30" REBAR W/ "KS ASSOC" CAP SET	1
5051	93+00.00	-37.50	LT	569711.90	1466589.27	IPINS	5/8" / 30" REBAR W/ "KS ASSOC" CAP SET	1
5052	93+27.26	25.00	RT	569645.29	1466604.51	IPINS	5/8" / 30" REBAR W/ "KS ASSOC" CAP SET	1
5053	93+45.97	25.00	RT	569639.31	1466617.18	IPINS	5/8" / 30" REBAR W/ "KS ASSOC" CAP SET	1
5054	93+45.97	20.00	RT	569643.61	1466619.73	IPINS	5/8" / 30" REBAR W/ "KS ASSOC" CAP SET	1
5055	93+58.00	-20.00	LT	569671.89	1466650.47	IPINS	5/8" / 30" REBAR W/ "KS ASSOC" CAP SET	1
5056	97+06.87	-20.00	LT	569494.07	1466950.61	IPINS	5/8" / 30" REBAR W/ "KS ASSOC" CAP SET	1
5057	97+36.96	-20.00	LT	569485.07	1466972.84	IPINS	5/8" / 30" REBAR W/ "KS ASSOC" CAP SET	1
5058	97+41.72	20.00	RT	569444.97	1466969.16	IPINS	5/8" / 30" REBAR W/ "KS ASSOC" CAP SET	1
5059	97+06.87	20.00	RT	569459.65	1466930.22	IPINS	5/8" / 30" REBAR W/ "KS ASSOC" CAP SET	1
5060	93+15.37	-37.52	LT	569708.72	1466610.14	IPINS	5/8" / 30" REBAR W/ "KS ASSOC" CAP SET	1
5061	93+50.00	-49.50	LT	569701.35	1466658.62	IPINS	5/8" / 30" REBAR W/ "KS ASSOC" CAP SET	1
5062	93+58.00	-45.98	LT	569694.24	1466663.71	IPINS	5/8" / 30" REBAR W/ "KS ASSOC" CAP SET	1
5063	81+56.00	20.00	RT	568951.50	1465813.57	IPINS	5/8" / 30" REBAR W/ "KS ASSOC" CAP SET	1
5064	81+13.50	36.50	RT	568937.22	1465770.27	IPINS	5/8" / 30" REBAR W/ "KS ASSOC" CAP SET	1
5065	80+87.50	36.50	RT	568938.56	1465711.31	IPINS	5/8" / 30" REBAR W/ "KS ASSOC" CAP SET	1
5066	80+50.00	28.00	RT	568948.98	1465707.29	IPINS	5/8" / 30" REBAR W/ "KS ASSOC" CAP SET	1
5067	61+84.07	37.82	LT	569536.16	1464883.92	IPINS	5/8" / 30" REBAR W/ "KS ASSOC" CAP SET	1
5068	72+29.12	-5.00	LT	568699.66	1464958.52	IPINS	5/8" / 30" REBAR W/ "KS ASSOC" CAP SET	1
5069	96+39.57	-215.27	LT	569696.37	1466992.25	IPINS	5/8" / 30" REBAR W/ "KS ASSOC" CAP SET	1
5070	61+97.71	130.09	RT	569538.79	1464715.47	IPINS	5/8" / 30" REBAR W/ "KS REFERENCE" CAP SET	1
5071	70+10.87	-11.70	LT	568772.33	1464780.13	IPINS	5/8" / 30" REBAR W/ "KS ASSOC" CAP SET	1
5072	71+00.02	-11.70	LT	568707.93	1464841.77	IPINS	5/8" / 30" REBAR W/ "KS ASSOC" CAP SET	1
5073	71+30.96	-11.70	LT	568693.26	1464863.15	IPINS	5/8" / 30" REBAR W/ "KS ASSOC" CAP SET	1
5074	71+30.66	-5.00	LT	568687.19	1464860.31	IPINS	5/8" / 30" REBAR W/ "KS ASSOC" CAP SET	1
5075	71+75.71	-5.00	LT	568684.55	1464907.29	IPINS	5/8" / 30" REBAR W/ "KS ASSOC" CAP SET	1
TOTAL TO BE CARRIED TO GENERAL SUMMARY							60	14



PID NO. **106223**

R/W DESIGNER: KAR  
R/W REVIEWER: TAB

**MONUMENT TABLE**

**WAR-CLEAR CRK**

REV	DATE	DESCRIPTION	
R3	3-10-22	ADDED MONUMENTS	16 / 16