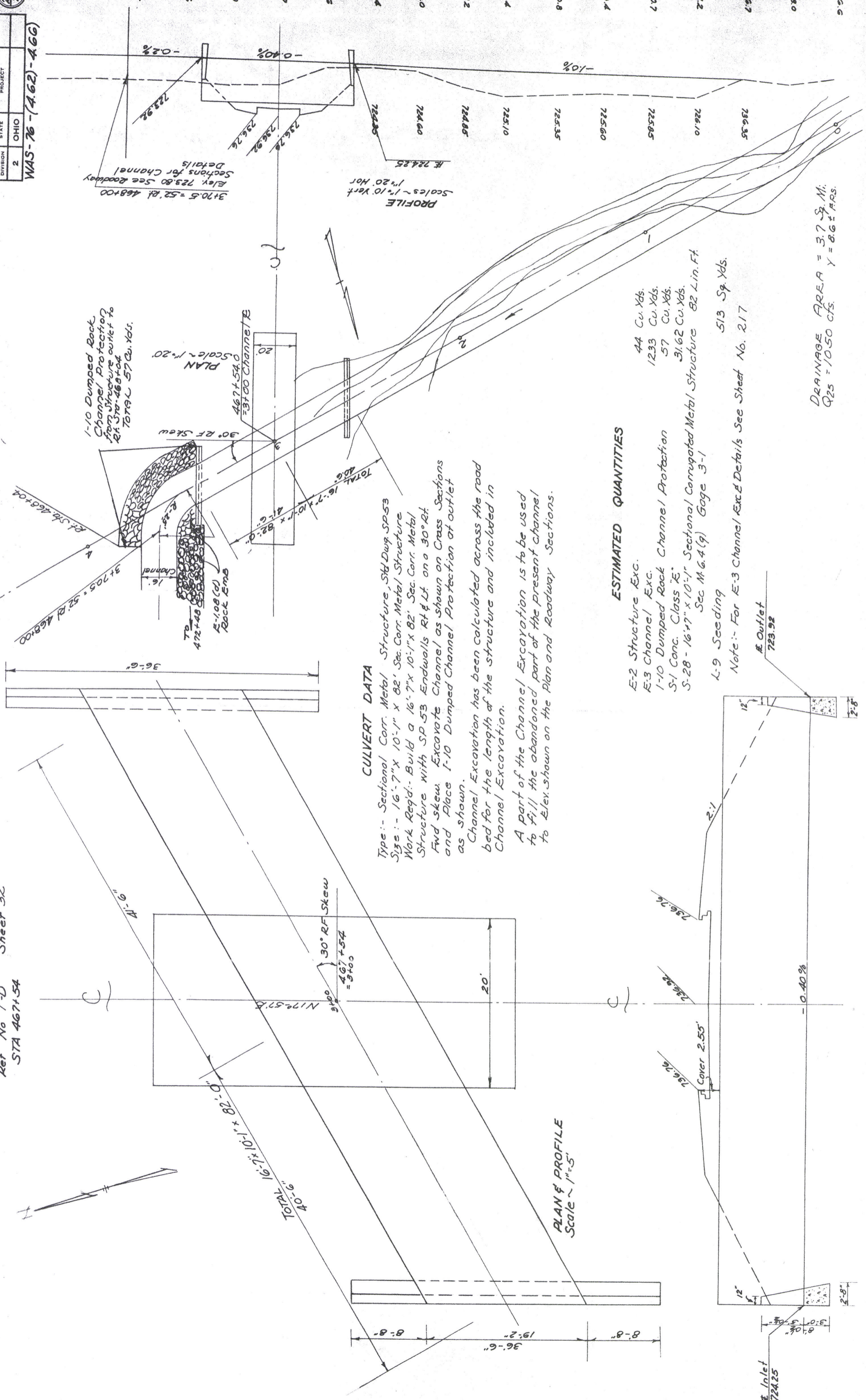


ESTIMATED QUANTITIES

REF. NO.	STATION TO STATION	SIDE	EST. QTY.	UNIT
1-D	467+54	LT	81.7	cu yd
2-D	467+00 - 467+13	LT	1.7	cu yd
4-D	468+00 - 472+48	RT	17	cu yd
1-A	468+50	LT	0.82	sq yd
2-A	473+66.4	RT	1.59	sq yd
1-R	466+72 - 468+00	LT	1.50	sq yd
2-R	467+08 - 1+50	RT	1.50	sq yd
4-R	473+81 - 474+96	RT	1.50	sq yd
5-R	473+81 - 474+96	RT	1.50	sq yd
6-R	473+81 - 474+96	RT	1.50	sq yd

1-10 Removal of Existing Siding
 1-9 Removal of Existing Siding
 1-8 Removal of Existing Siding
 1-7 Removal of Existing Siding
 1-6 Removal of Existing Siding
 1-5 Removal of Existing Siding
 1-4 Removal of Existing Siding
 1-3 Removal of Existing Siding
 1-2 Removal of Existing Siding
 1-1 Removal of Existing Siding

FED. NO.	PROJECT
DIVISION	
2	OHIO
WAS-76-(4.62)-4.66	



CULVERT DATA

Type: - Sectional Cor. Metal Structure, Std Dwg. SP-53
 Size: - 16'-7" x 10'-1" x 82' Sec. Cor. Metal Structure
 Work Req'd: - Build a 16'-7" x 10'-1" x 82' Sec. Cor. Metal Structure with SP-53 Endwalls Rt & Lt. on a 30° Rt. Fwd skew. Excavate Channel as shown on Cross Sections and Place 1-10 Dumped Rock Channel Protection at outlet as shown.

Channel Excavation has been calculated across the road bed for the length of the structure and included in Channel Excavation.

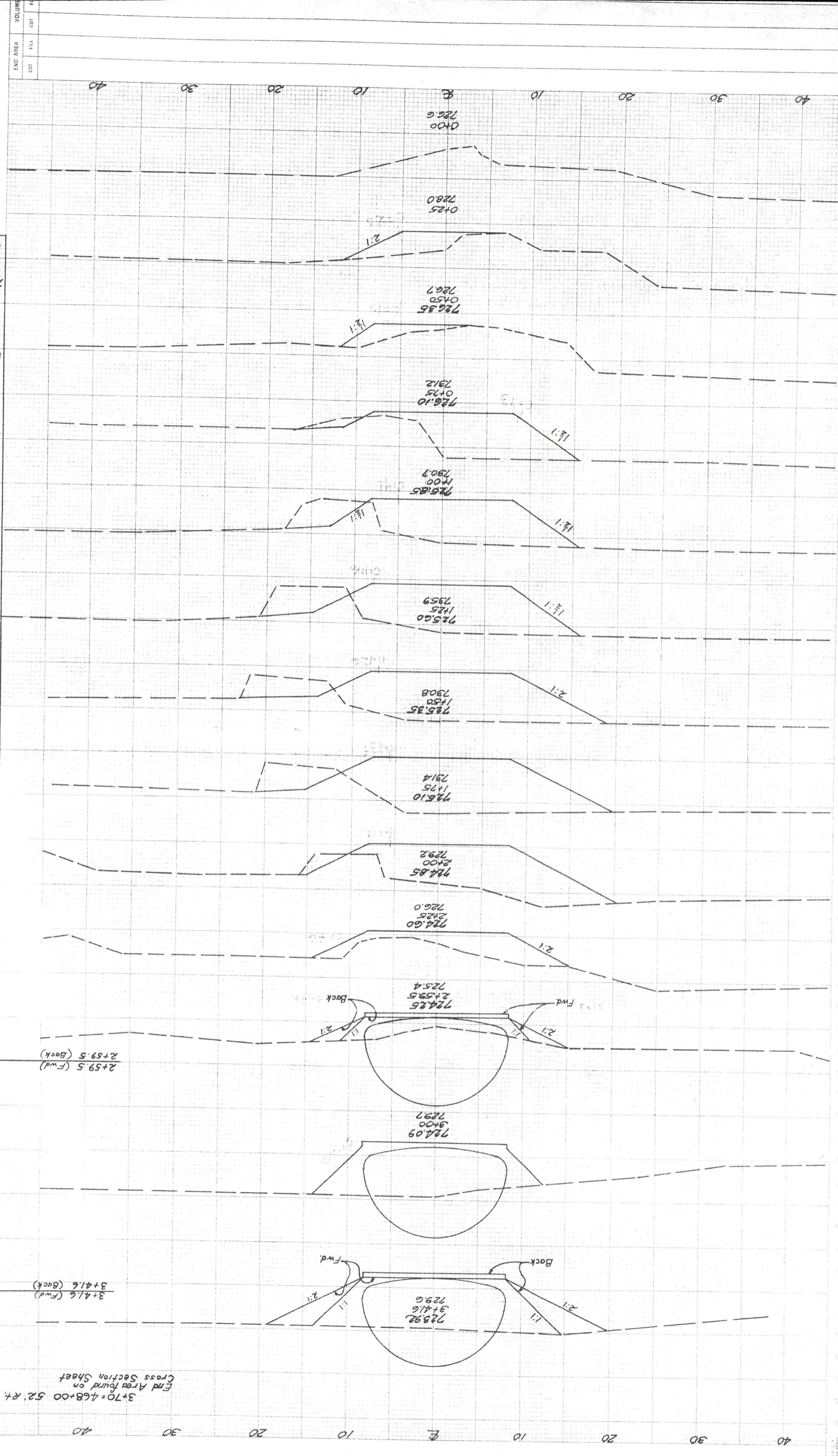
A part of the Channel Excavation is to be used to fill the abandoned part of the present Channel to Elex. shown on the Plan and Roadway Sections.

ESTIMATED QUANTITIES

- E-2 Structure Exc. 44 Cu. Yds.
- E-3 Channel Exc. 1233 Cu. Yds.
- 1-10 Dumped Rock Channel Protection 57 Cu. Yds.
- S-1 Conc. Class "E" 31.62 Cu. Yds.
- S-28 - 16"x17" x 10'-1" Sectional Corrugated Metal Structure 82 Lin. Ft.
- Sec. M-6.4(g) Gage 3-1
- L-9 Seeding 513 Sq. Yds.

Note: - For E-3 Channel Exc. & Details See Sheet No. 217

DRAINAGE AREA = 3.7 Sq. Mi.
 Q25 = 1050 cfs. Y = 8.6 ± F.F.S.



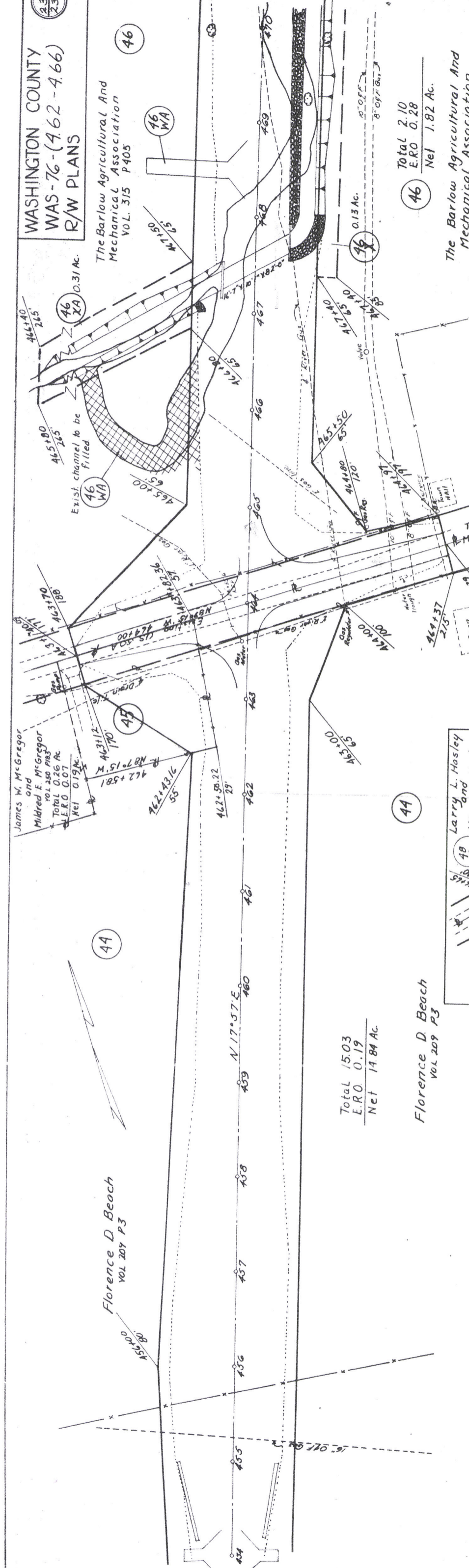
217	238
PROJECT	
STATE	OHIO
DISTRICT	2

WAS-76-(462-466)

220	0	40
199	0	30
121	0	20
123	0	10
43	0	0
44	0	0
58	0	0
46	0	0
74	0	0
113	0	0
115	0	0
135	0	0
120	0	0
124	0	0
106	0	0
91	0	0
91	0	0
76	0	0
73	0	0
41	0	0
15	0	0
18	0	0
23	0	0
11	0	0
0	0	0

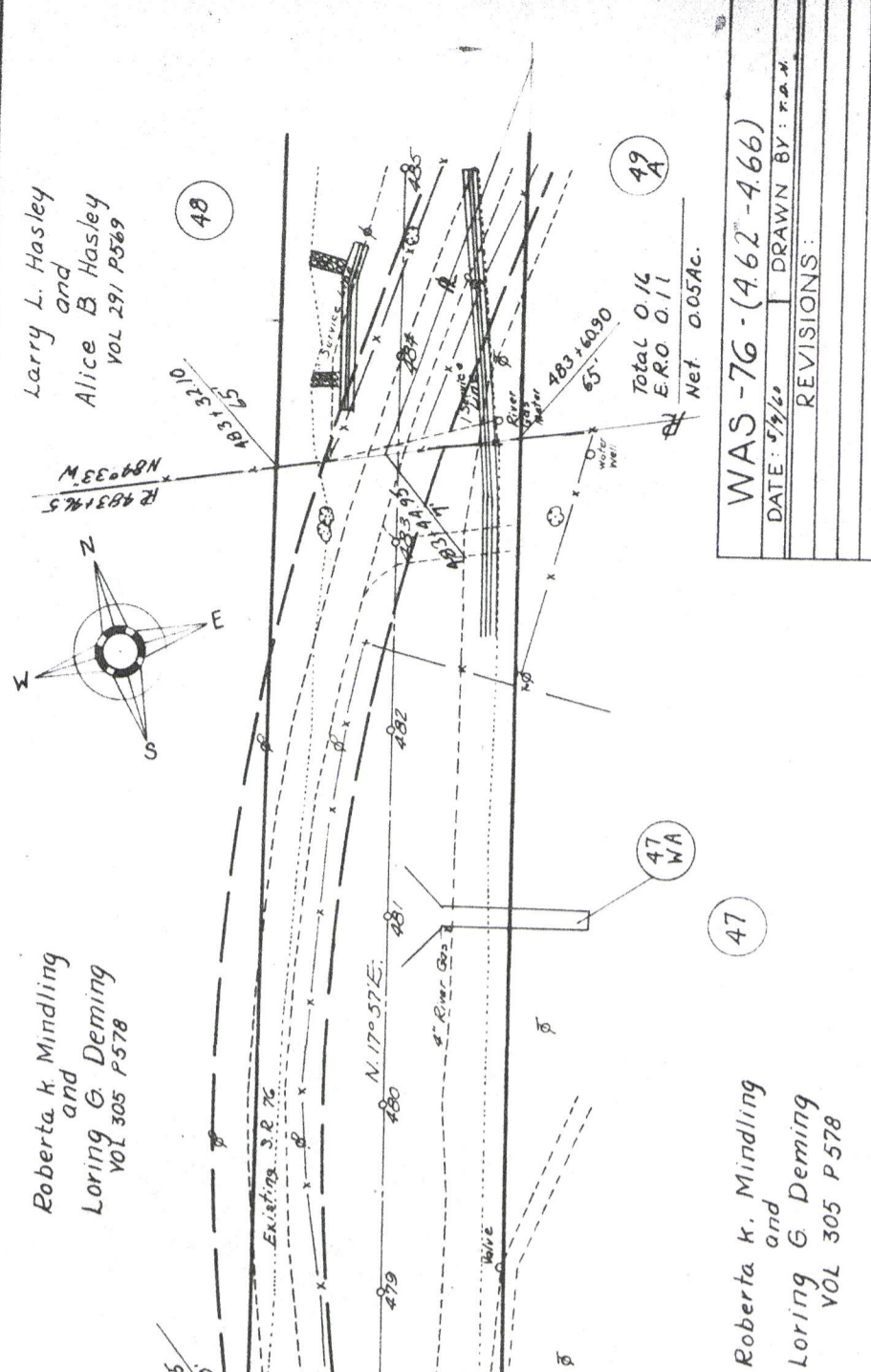
3+70=468+00 52' RT.
 End Area Found on
 Cross Section Sheet

End Area Co Yds
 CUT FILL CUT FILL



Barlow Twp. Sec. 21, T3N, R10W

The Barlow Agricultural And Mechanical Association
 VOL 315 P 405

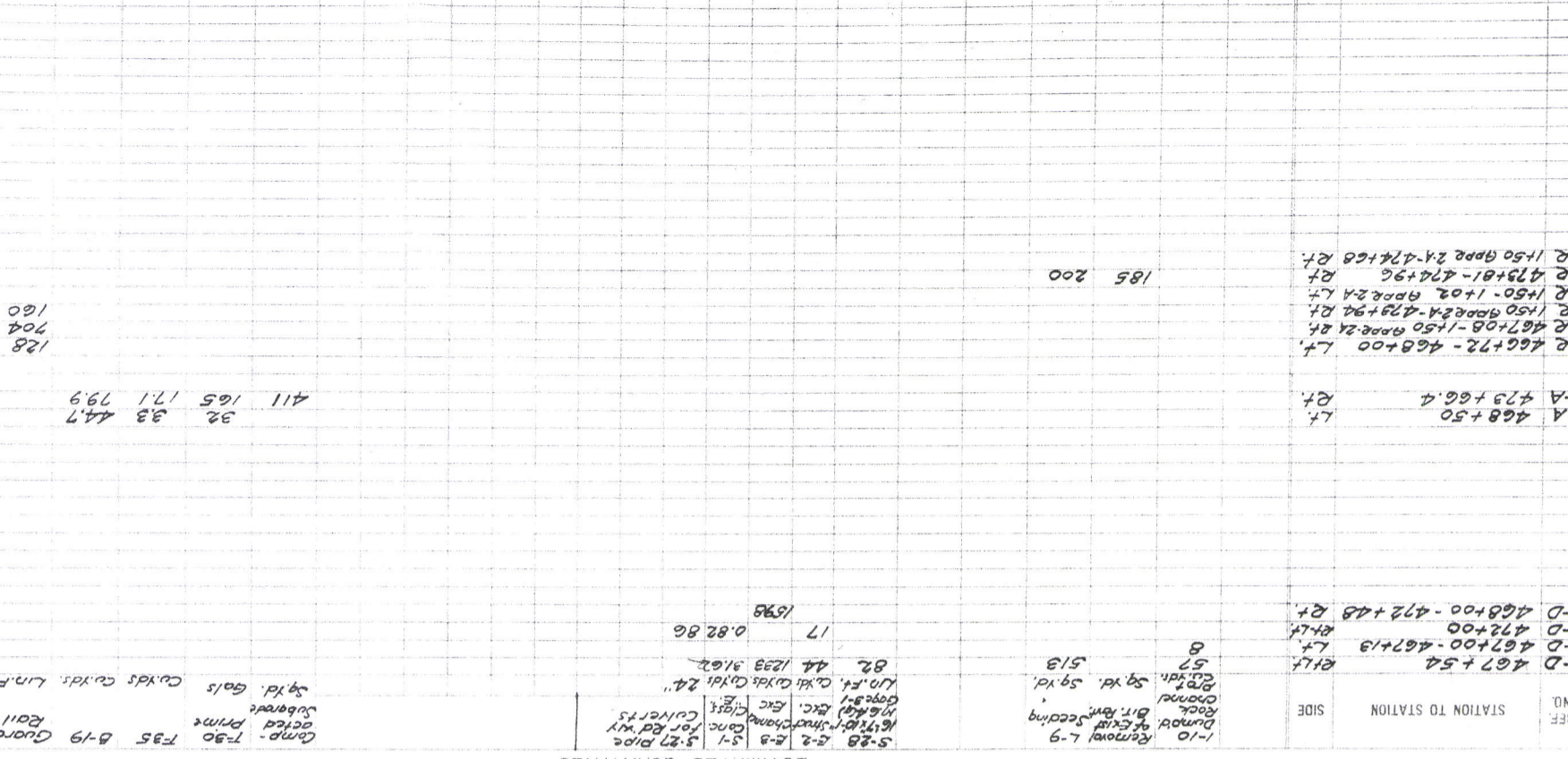


WAS-76-(4.62-4.66)

DATE: 5/2/60	DRAWN BY: r.a.x.
REVISIONS:	

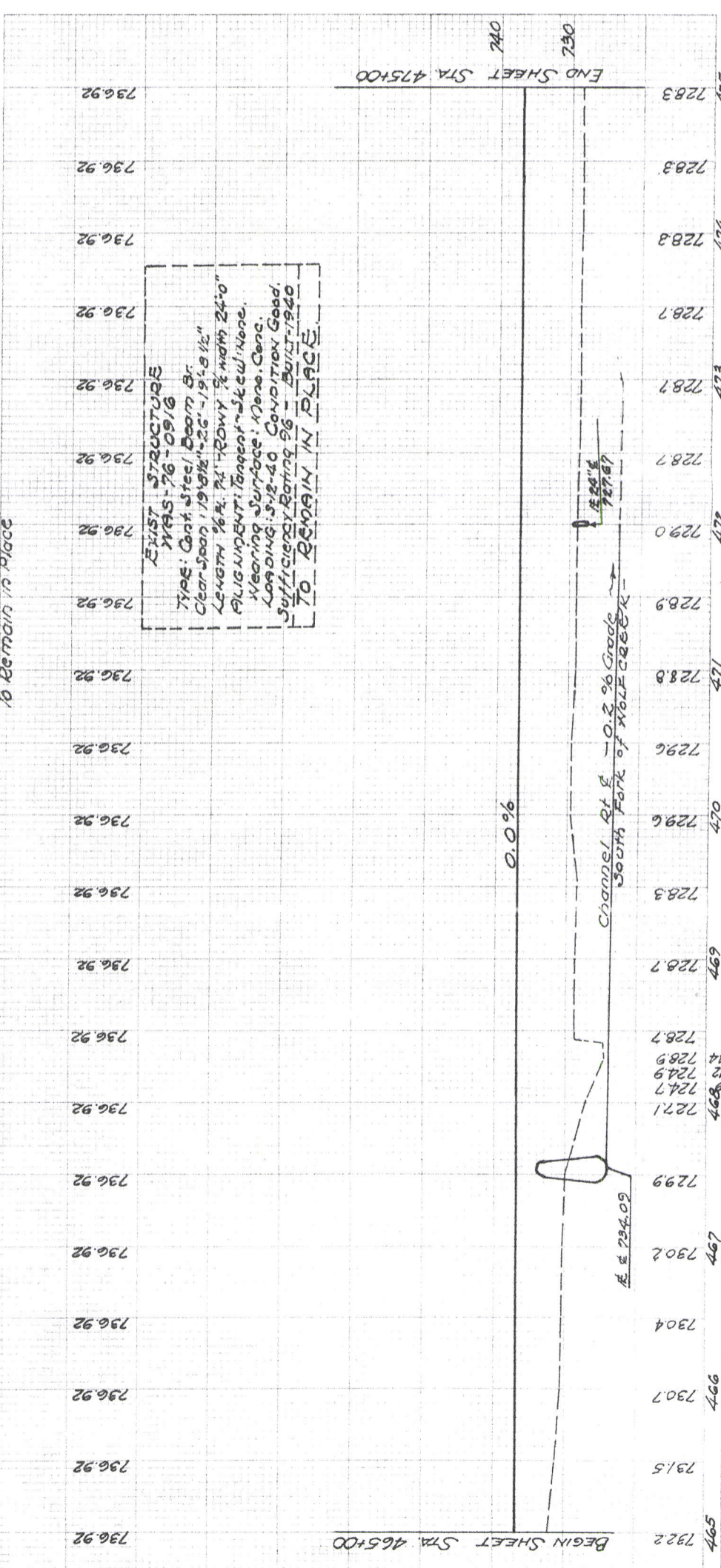
Barlow Twp. Sec. 21-22, T3N, R10W

FOR DETAILS OF INTERSECTION SEE SHEET 192



ESTIMATED QUANTITIES

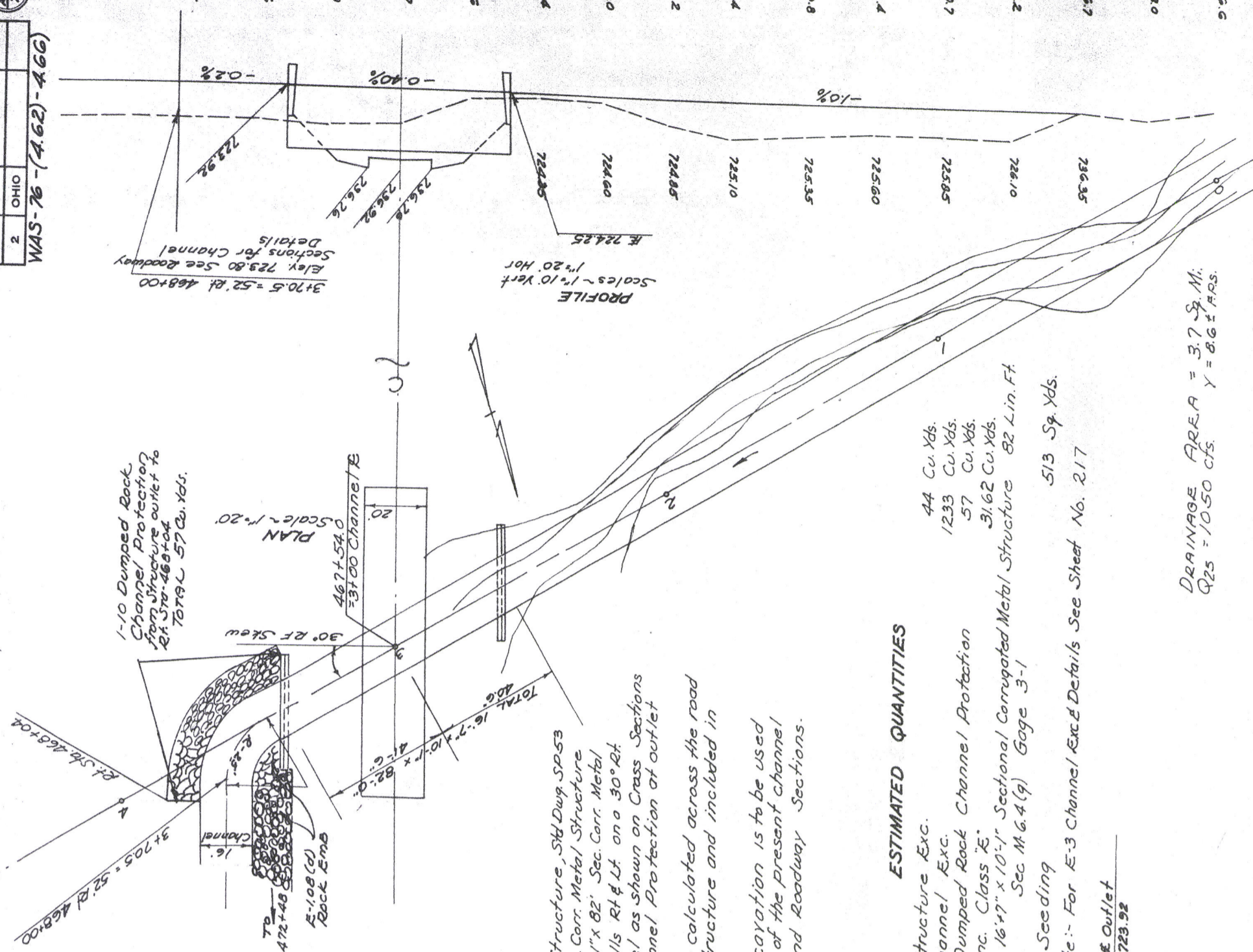
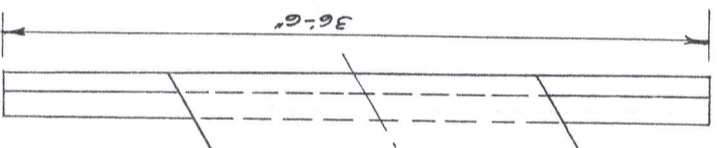
REF. NO.	STATION TO STATION	SIDE	EST. QUANTITIES
1-D	467+54	RT	82
2-D	467+00 - 467+13	RT	44
3-D	472+00	RT	44
4-D	468+00 - 472+48	RT	17
1-A	468+50	LT	0.82
2-A	472+66.4	RT	1.59
1-R	466+72 - 468+00	LT	128
2-R	467+08 - 1550	LT	160
3-R	1550 - 1502	LT	704
4-R	1550 - 1502	LT	160
5-R	472+81 - 472+96	RT	128
6-R	1550 - 1502	LT	160
7-R	1550 - 1502	LT	160
8-R	1550 - 1502	LT	160
9-R	1550 - 1502	LT	160
10-R	1550 - 1502	LT	160
11-R	1550 - 1502	LT	160
12-R	1550 - 1502	LT	160
13-R	1550 - 1502	LT	160
14-R	1550 - 1502	LT	160
15-R	1550 - 1502	LT	160
16-R	1550 - 1502	LT	160
17-R	1550 - 1502	LT	160
18-R	1550 - 1502	LT	160
19-R	1550 - 1502	LT	160
20-R	1550 - 1502	LT	160
21-R	1550 - 1502	LT	160
22-R	1550 - 1502	LT	160
23-R	1550 - 1502	LT	160
24-R	1550 - 1502	LT	160
25-R	1550 - 1502	LT	160
26-R	1550 - 1502	LT	160
27-R	1550 - 1502	LT	160
28-R	1550 - 1502	LT	160
29-R	1550 - 1502	LT	160
30-R	1550 - 1502	LT	160
31-R	1550 - 1502	LT	160
32-R	1550 - 1502	LT	160
33-R	1550 - 1502	LT	160
34-R	1550 - 1502	LT	160
35-R	1550 - 1502	LT	160
36-R	1550 - 1502	LT	160
37-R	1550 - 1502	LT	160
38-R	1550 - 1502	LT	160
39-R	1550 - 1502	LT	160
40-R	1550 - 1502	LT	160
41-R	1550 - 1502	LT	160
42-R	1550 - 1502	LT	160
43-R	1550 - 1502	LT	160
44-R	1550 - 1502	LT	160
45-R	1550 - 1502	LT	160
46-R	1550 - 1502	LT	160
47-R	1550 - 1502	LT	160
48-R	1550 - 1502	LT	160
49-R	1550 - 1502	LT	160
50-R	1550 - 1502	LT	160
51-R	1550 - 1502	LT	160
52-R	1550 - 1502	LT	160
53-R	1550 - 1502	LT	160
54-R	1550 - 1502	LT	160
55-R	1550 - 1502	LT	160
56-R	1550 - 1502	LT	160
57-R	1550 - 1502	LT	160
58-R	1550 - 1502	LT	160
59-R	1550 - 1502	LT	160
60-R	1550 - 1502	LT	160
61-R	1550 - 1502	LT	160
62-R	1550 - 1502	LT	160
63-R	1550 - 1502	LT	160
64-R	1550 - 1502	LT	160
65-R	1550 - 1502	LT	160
66-R	1550 - 1502	LT	160
67-R	1550 - 1502	LT	160
68-R	1550 - 1502	LT	160
69-R	1550 - 1502	LT	160
70-R	1550 - 1502	LT	160
71-R	1550 - 1502	LT	160
72-R	1550 - 1502	LT	160
73-R	1550 - 1502	LT	160
74-R	1550 - 1502	LT	160
75-R	1550 - 1502	LT	160
76-R	1550 - 1502	LT	160
77-R	1550 - 1502	LT	160
78-R	1550 - 1502	LT	160
79-R	1550 - 1502	LT	160
80-R	1550 - 1502	LT	160
81-R	1550 - 1502	LT	160
82-R	1550 - 1502	LT	160
83-R	1550 - 1502	LT	160
84-R	1550 - 1502	LT	160
85-R	1550 - 1502	LT	160
86-R	1550 - 1502	LT	160
87-R	1550 - 1502	LT	160
88-R	1550 - 1502	LT	160
89-R	1550 - 1502	LT	160
90-R	1550 - 1502	LT	160
91-R	1550 - 1502	LT	160
92-R	1550 - 1502	LT	160
93-R	1550 - 1502	LT	160
94-R	1550 - 1502	LT	160
95-R	1550 - 1502	LT	160
96-R	1550 - 1502	LT	160
97-R	1550 - 1502	LT	160
98-R	1550 - 1502	LT	160
99-R	1550 - 1502	LT	160
100-R	1550 - 1502	LT	160



BEGIN SHEET STA. 465+00

END SHEET STA. 475+00

FED. NO.	2
DIVISION	2
STATE	OHIO
PROJECT	WAS-76-(4.62)-466



CULVERT DATA

Type :- Sectional Corr. Metal Structure, Std. Dwg. SP-53
 Size :- 16'-7" x 10'-1" x 82' Sec. Corr. Metal Structure
 Work Req'd :- Build a 16'-7" x 10'-1" x 82' Sec. Corr. Metal Structure with SP-53 Endwalls Rt & Lt. on a 30° Rt. Fwd skew. Excavate Channel as shown on Cross Sections and Place 1-10 Dumped Channel Protection at outlet as shown.
 Channel Excavation has been calculated across the road bed for the length of the structure and included in Channel Excavation.

A part of the Channel Excavation is to be used to fill the abandoned part of the present channel to Elev. shown on the Plan and Roadway Sections.

ESTIMATED QUANTITIES

- E-2 Structure Exc. 44 Cu. Yds.
- E-3 Channel Exc. 1233 Cu. Yds.
- 1-10 Dumped Rock Channel Protection 57 Cu. Yds.
- S-1 Conc. Class "E" 31.62 Cu. Yds.
- S-28 - 16'47" x 10'-1" Sectional Corrugated Metal Structure 82 Lin. Ft.
- L-9 Seeding 513 Sq. Yds.

Note :- For E-3 Channel Exc. & Details See Sheet No. 2.17

DRAINAGE AREA = 3.7 Sq. Mi.
 Q25 = 10.50 cfs. Y = 8.6 ± FRS.