

I:\ProjectData\WAS-7-32.39\Design\Roadway\Sheets\13399\_GG001.dgn Sheet 8/17/2021 2:33:48 PM ereed

SHEET NUM.										PART.			ITEM	ITEM	GRAND	UNIT	DESCRIPTION	SEE SHEET NO.	CALCULATED EPR CHECKED XXX	
3	5	6	7	9	14					01/NHS/PV			EXT	TOTAL						
	LUMP												201	11000	LS		ROADWAY			
					22								202	23000	22	SY	PAVEMENT REMOVED			
					99								202	35100	99	FT	PIPE REMOVED, 24" AND UNDER			
					102								202	75001	102	FT	FENCE REMOVED, AS PER PLAN	5		
				657									203	10000	657	CY	EXCAVATION			
				454									203	20000	454	CY	EMBANKMENT			
				3,781									204	10000	3,781	SY	SUBGRADE COMPACTION			
	56												204	13000	56	CY	EXCAVATION OF SUBGRADE			
	56												204	20000	56	CY	EMBANKMENT			
	2												2	45000	2	HOUR	PROOF ROLLING			
196													204	17900	196	EACH	GUARDRAIL POST			
					56								607	98000	56	FT	FENCE, MISC.:USACE TYPE FE6 CHAIN LINK FENCE (6'-0" FABRIC WIDTH)	5		
					31								607	98000	31	FT	FENCE, MISC.:USACE TYPE FE6 CHAIN LINK FENCE (10'-0" FABRIC WIDTH)	5		
					1								607	50901	1	EACH	GATE, TYPE CL, AS PER PLAN	5		
					70								622	10160	70	FT	CONCRETE BARRIER, SINGLE SLOPE, TYPE D			
					2								622	25000	2	EACH	CONCRETE BARRIER END SECTION, TYPE D			
					1								SPECIAL	69050350	1	EACH	MAILBOX REMOVED AND RESET	4		
																	EROSION CONTROL			
	65												659	00300	65	CY	TOPSOIL			
	1,105												659	10000	1,105	SY	SEEDING AND MULCHING			
	221												659	14000	221	SY	REPAIR SEEDING AND MULCHING			
	0.1												659	20000	0.1	TON	COMMERCIAL FERTILIZER			
	0.23												659	31000	0.23	ACRE	LIME			
	2												2	35000	2	MGAL	WATER			
	583												670	00500	583	SY	SLOPE EROSION PROTECTION			
													LUMP	832	15000	LS	STORM WATER POLLUTION PREVENTION PLAN			
													LUMP	832	15002	LS	STORM WATER POLLUTION PREVENTION INSPECTIONS			
													LUMP	832	15010	LS	STORM WATER POLLUTION PREVENTION INSPECTION SOFTWARE			
													3,000	832	30000	3,000	EACH	EROSION CONTROL		
																	DRAINAGE			
					0.5								602	20000	0.5	CY	CONCRETE MASONRY			
					62								611	10200	62	FT	24" CONDUIT, TYPE A			
					87								611	00101	87	FT	4" CONDUIT, TYPE B, AS PER PLAN	5		
					1								611	99551	1	EACH	MANHOLE, NO. 1, AS PER PLAN	5		
																	PAVEMENT			
					84								252	01500	84	FT	FULL DEPTH PAVEMENT SAWING			
					315								254	01000	315	SY	PAVEMENT PLANING, ASPHALT CONCRETE (1.25" DEPTH)			
				803									304	20000	803	CY	AGGREGATE BASE			
				209									407	10000	209	GAL	TACK COAT			
				132									441	50000	132	CY	ASPHALT CONCRETE SURFACE COURSE, TYPE 1, (448), PG64-22			
				185									441	50300	185	CY	ASPHALT CONCRETE INTERMEDIATE COURSE, TYPE 2, (448)			
																	TRAFFIC CONTROL			
					9								630	80100	9	SF	SIGN, FLAT SHEET			
					1								630	08600	1	EACH	SIGN POST REFLECTOR			
					12								630	03100	12	FT	GROUND MOUNTED SUPPORT, NO. 3 POST			
					50								642	00500	50	FT	STOP LINE, TYPE 1			
					0.29								642	00300	0.29	MILE	CENTER LINE, TYPE 1			
					0.58								642	00100	0.58	MILE	EDGE LINE, 4", TYPE 1			
																	MAINTENANCE OF TRAFFIC			
				0.02									614	21000	0.02	MILE	WORK ZONE CENTER LINE, CLASS I			
				0.26									614	22000	0.26	MILE	WORK ZONE EDGE LINE, CLASS I, 4"			
				35									615	20000	35	SY	PAVEMENT FOR MAINTAINING TRAFFIC, CLASS A			
		5											616	10000	5	MGAL	WATER			
																	INCIDENTALS			
													LUMP	614	11000	LS	MAINTAINING TRAFFIC			
													LUMP	623	10000	LS	CONSTRUCTION LAYOUT STAKES AND SURVEYING			
													LUMP	624	10000	LS	MOBILIZATION			

GENERAL SUMMARY

WAS-7-32.15

I:\ProjectData\WAS-7-32\39\Design\Roadway\Sheets\113399\_DE002.dgn Sheet 8/17/2021 2:20:21 PM eread

**PROJECT DESCRIPTION**

CONSTRUCTION OF A NEW ACCESS ROAD TO THE PROPERTY OF THE HISTORIC JUDGE JOSEPH BARKER JR. HOUSE. THE NEW ALIGNMENT ALSO INCLUDES MINOR DRAINAGE WORK.

**POST-CONSTRUCTION BMP'S**

THIS PROJECT WILL PROVIDE A VEGETATED FILTER STRIP FROM STA. 4+50 TO STA. 15+00 ALONG THE RT. SIDE OF THE BARKER ACCESS ROAD TO TREAT 70% OF THE PROJECT EARTH DISTURBED AREA.

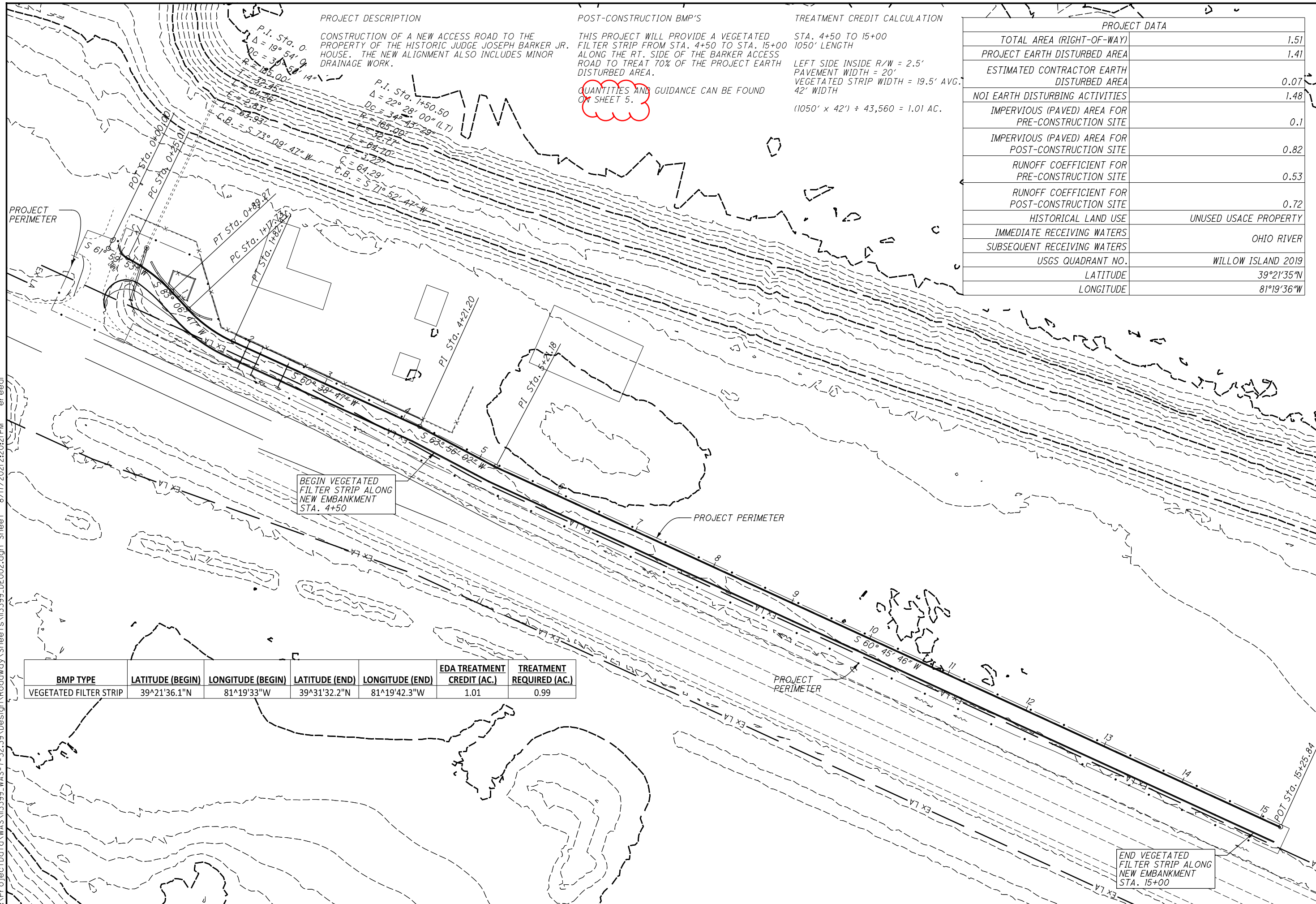
QUANTITIES AND GUIDANCE CAN BE FOUND ON SHEET 5.

**TREATMENT CREDIT CALCULATION**

STA. 4+50 TO 15+00  
1050' LENGTH  
LEFT SIDE INSIDE R/W = 2.5'  
PAVEMENT WIDTH = 20'  
VEGETATED STRIP WIDTH = 19.5' AVG.  
42' WIDTH  
 $(1050' \times 42') \div 43,560 = 1.01 \text{ AC.}$

PROJECT DATA	
TOTAL AREA (RIGHT-OF-WAY)	1.51
PROJECT EARTH DISTURBED AREA	1.41
ESTIMATED CONTRACTOR EARTH DISTURBED AREA	0.07
NOI EARTH DISTURBING ACTIVITIES	1.48
IMPERVIOUS (PAVED) AREA FOR PRE-CONSTRUCTION SITE	0.1
IMPERVIOUS (PAVED) AREA FOR POST-CONSTRUCTION SITE	0.82
RUNOFF COEFFICIENT FOR PRE-CONSTRUCTION SITE	0.53
RUNOFF COEFFICIENT FOR POST-CONSTRUCTION SITE	0.72
HISTORICAL LAND USE	UNUSED USACE PROPERTY
IMMEDIATE RECEIVING WATERS	OHIO RIVER
SUBSEQUENT RECEIVING WATERS	OHIO RIVER
USGS QUADRANT NO.	WILLOW ISLAND 2019
LATITUDE	39°21'35"N
LONGITUDE	81°19'36"W

CALCULATED  
EPR  
CHECKED  
XXX



BEGIN VEGETATED FILTER STRIP ALONG NEW EMBANKMENT STA. 4+50

END VEGETATED FILTER STRIP ALONG NEW EMBANKMENT STA. 15+00

BMP TYPE	LATITUDE (BEGIN)	LONGITUDE (BEGIN)	LATITUDE (END)	LONGITUDE (END)	EDA TREATMENT CREDIT (AC.)	TREATMENT REQUIRED (AC.)
VEGETATED FILTER STRIP	39°21'36.1"N	81°19'33"W	39°31'32.2"N	81°19'42.3"W	1.01	0.99

PROJECT SITE PLAN  
BARKER HOUSE ACCESS ROAD

WAS-7-32.15