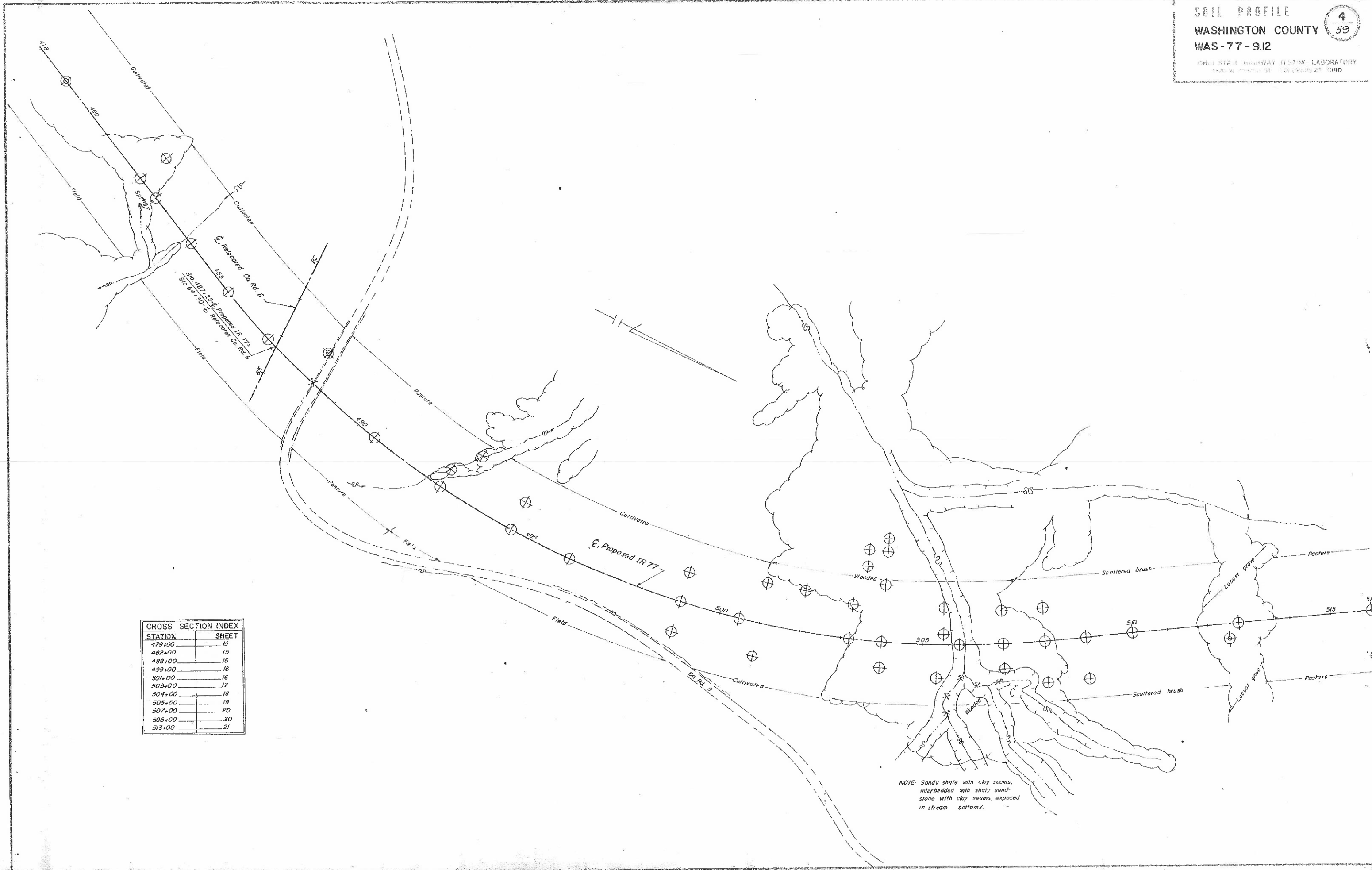


SOIL PROFILE  
 WASHINGTON COUNTY  
 WAS-77-9,12

4  
 59

OHIO STATE HIGHWAY DISTRICT LABORATORY  
 1200 WEST 12TH ST. COLUMBUS 23, OHIO

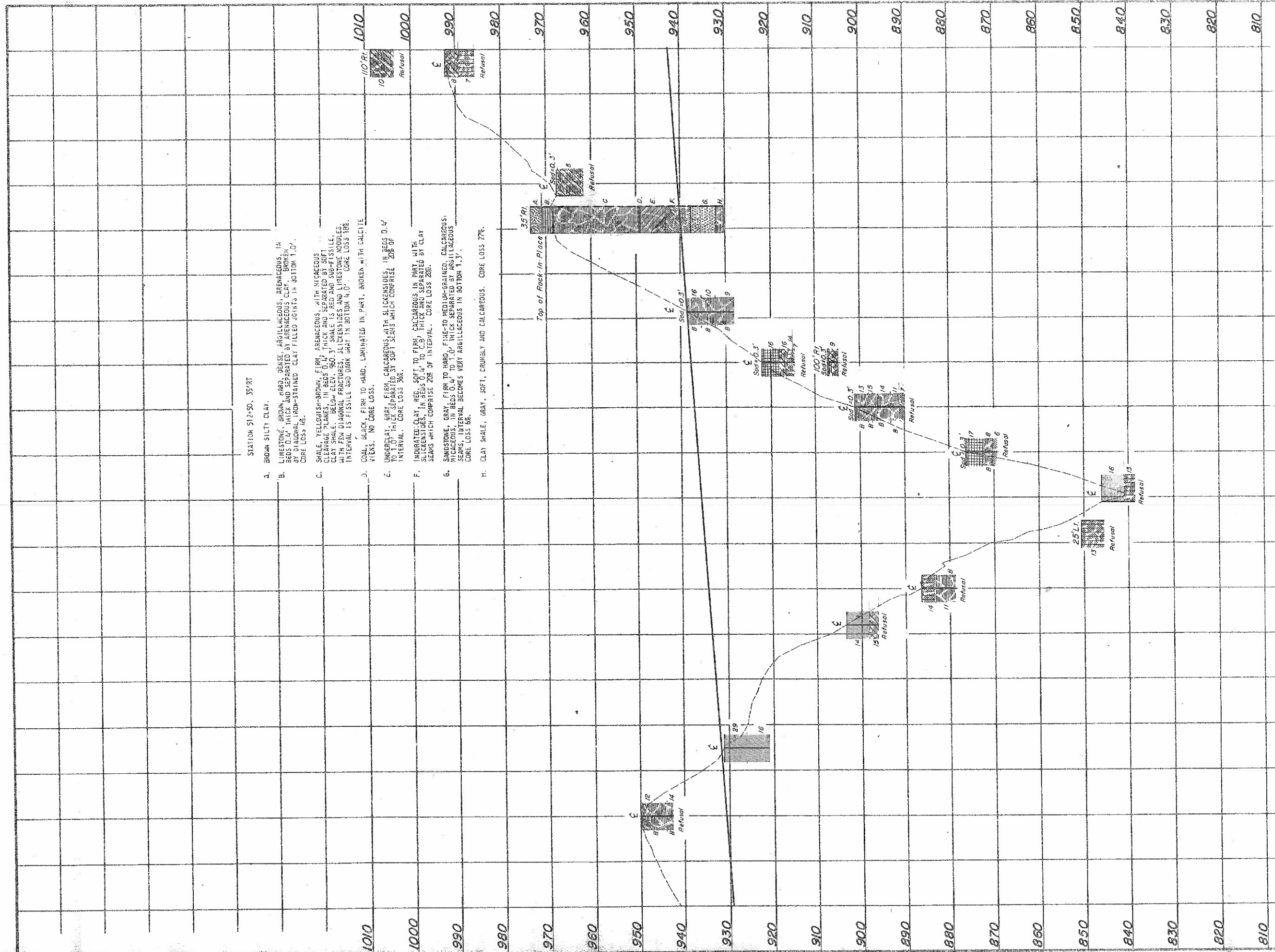


CROSS SECTION INDEX	
STATION	SHEET
479+00	15
482+00	15
488+00	16
499+00	16
501+00	16
503+00	17
504+00	18
505+50	19
507+00	20
508+00	20
513+00	21

NOTE: Sandy shale with clay seams, interbedded with shaly sandstone with clay seams, exposed in stream bottoms.

STATION 512+90, 357 RT

- A. BROWN SILTY CLAY.
- B. LIMESTONE, BROWN, DENSE, ARGILLACEOUS, ARENACEOUS, IN BEDS 0.4' THICK AND SEPARATED BY ARGILLACEOUS CLAY. BROKEN BY DIAGONAL IRON-STAINED CLAY FILLED JOINTS IN BOTTOM 1.0'. CORE LOSS 1/2.
- C. SHALE, YELLOWISH-BROWN, FIRM, ARENACEOUS, WITH MICACEOUS CLEARANCE PLANES. IN BEDS 0.4' THICK AND SEPARATED BY SOFT CLAY SHALE. BELOW ELEV. 960.3' SHALE IS RED AND SUB-FISSILE, WITH FEN DIAGONAL FRACTURES, SLICKENSIDES AND LIMESTONE NODULES. INTERVAL IS FISSILE AND DARK GRAY IN BOTTOM 4.0'. CORE LOSS 1/2.
- 3. COAL, BLACK, FIRM TO HARD, LAMINATED IN PART, BROKEN WITH CALCITE VENS. NO CORE LOSS.
- E. UNDEVELOPED, GRAY, FIRM, CALCAREOUS WITH SLICKENSIDES. IN BEDS 0.4' TO 1.0' THICK SEPARATED BY SOFT SEAMS WHICH COMPRISE 20% OF INTERVAL. CORE LOSS 3/4.
- F. INDURATED CLAY, RED, SOFT TO FIRM, CALCAREOUS IN PART, WITH SLICKENSIDES. IN BEDS 0.4' TO 0.9' THICK AND SEPARATED BY CLAY SEAMS WHICH COMPRISE 20% OF INTERVAL. CORE LOSS 20%.
- G. SANDSTONE, GRAY, FIRM TO HARD, FINE TO MEDIUM-GRAINED, CALCAREOUS, ARGILLACEOUS. IN BEDS 0.4' TO 1.0' THICK SEPARATED BY ARGILLACEOUS SEAMS. INTERVAL BECOMES VERY ARGILLACEOUS IN BOTTOM 1.3'. CORE LOSS 8/10.
- H. CLAY SHALE, GRAY, SOFT, CRUMBLY AND CALCAREOUS. CORE LOSS 27%.



497 498 499 500 501 502 503 504 505 506 507 508 509 510 511 512 513 514 515 516

SOIL PROFILE

WASHINGTON COUNTY

WAS - 77 - 9.12

OHIO STATE HIGHWAY TESTING LABORATORY  
1620 W. BROAD ST. COLUMBUS 23, OHIO

19  
59

