

STRUCTURE No. WAS-76-0755
 Ref. No. 2-D Sheet 25
 STA. 397192

FED. RD. DIVISION	STATE	PROJECT
2	OHIO	

WAS-76-(462-466)

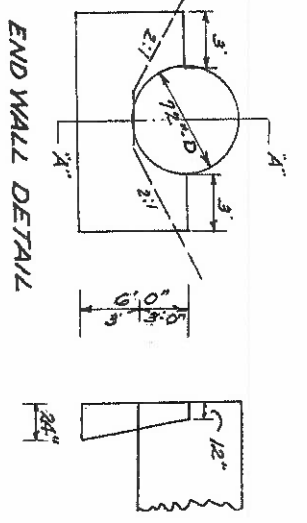
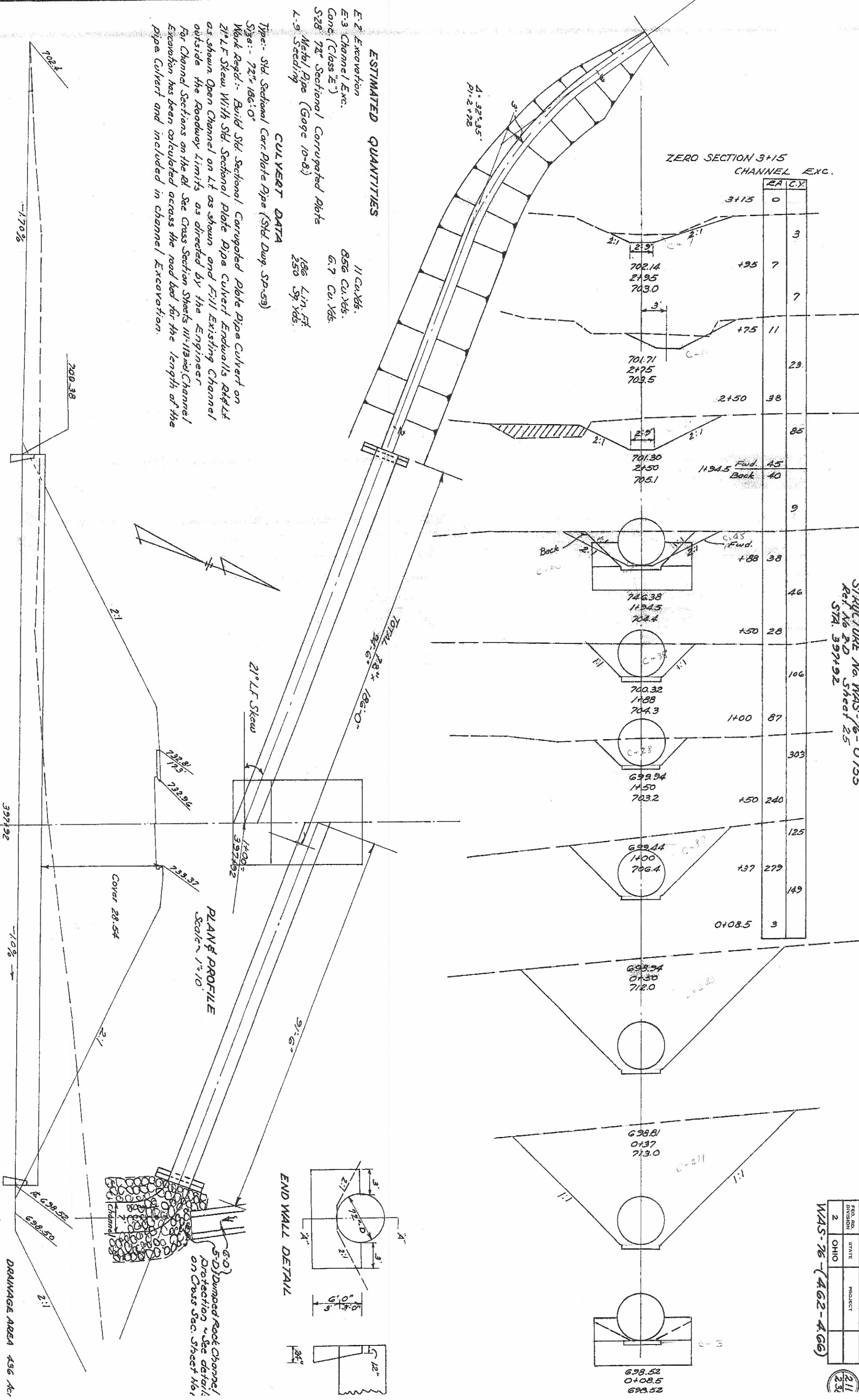
ZERO SECTION 3+15 CHANNEL EXC.	
EA	C.Y.
3+15	0
	3
+95	7
	7
+75	11
	23
+250	38
	85
701.30	45
1194.5	40
	9
+88	38
	46
+50	28
	106
+400	87
	303
+50	240
	125
+37	279
	149
0+08.5	3

ESTIMATED QUANTITIES

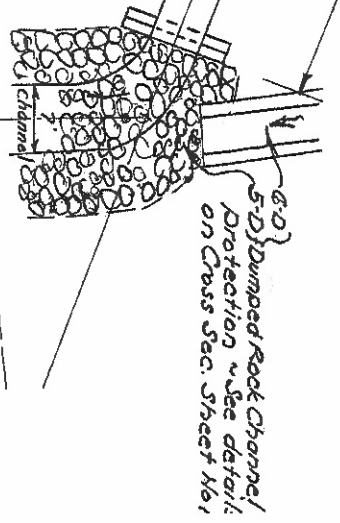
- E-2 Excavation 11 Cu.Yds.
- E-3 Channel Exc. 856 Cu.Yds.
- Conc. (Class "E") 6.7 Cu.Yds.
- S28 72" Sectional Corrugated Plate 186 Lin. Ft.
- L-9 Metal Pipe (Gage 10-8) 250 Sp.Yds.
- L-9 Seeding

CULVERT DATA

Type: Std. Sectional Cor. Plate Pipe (Std. Dwg. SP-53)
 Size: 72" 186'-0"
 Mark Req'd: Build Std. Sectional Corrugated Plate Pipe Culvert on 21° LF Skew With Std. Sectional Plate Pipe Culvert Endwalls R44L4 as shown Open Channel on Lt as shown and Fill Existing Channel outside the Roadway Limits as directed by the Engineer
 For Channel Sections on the Rt. See Cross Section Sheets W-113 and Channel Excavation has been calculated across the road bed for the length of the pipe Culvert and included in channel Excavation.



PLAN & PROFILE
 Scale: 1"=10'



STRUCTURE No. 2-D STA. 397192

DRAINAGE AREA 436 Ac.
 $Q_{25} = 200 \text{ C.F.S. } V = 9 \text{ -fps.}$

