

Temporary Detour Bridge and Approaches
 The Contractor shall construct, maintain and remove (upon completion of the project) a temporary detour bridge and approaches upon the right-of-way provided. The bridge shall have a roadway width of 18 ft. and a 12 ton loading capacity, adequate waterway opening and a floor elevation not lower than 100.0. The approaches shall have suitable alignment and grade and a width not less than 22 ft. and a crushed stone or gravel surface of 19 ft. width. The detour bridge and approaches shall be free from sharp turns that would prohibit free use by two lanes of traffic. The approaches shall include adequate pipe for side road ditches.

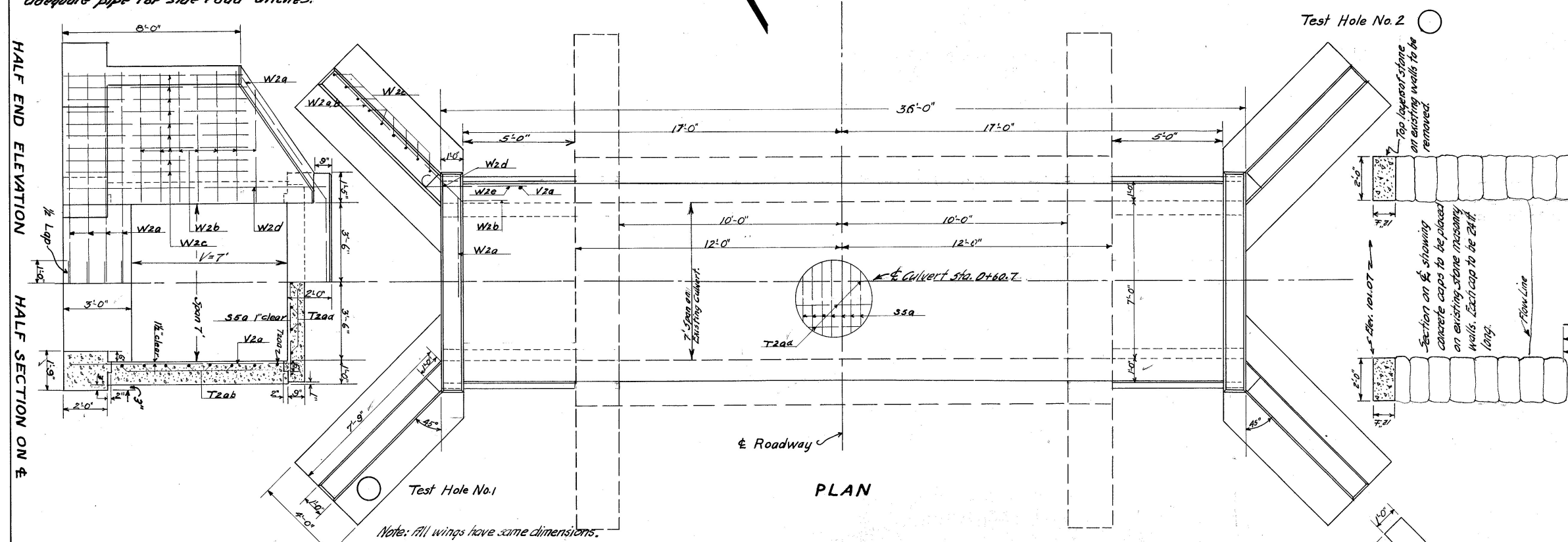
FED. AID DIST. NO.	STATE	FED. AID PROJ. NO.	FISCAL YEAR
10	OHIO		1932

S.H. 307
WILLIAMS

SEC. A-BRIDGE
COUNTY

6
9

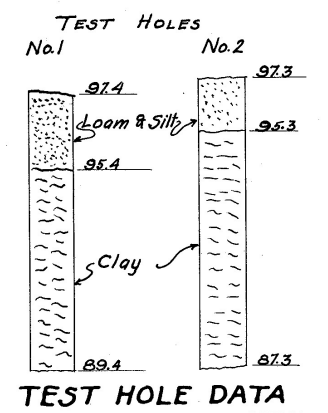
HALF END ELEVATION
HALF SECTION ON 4



STEEL LIST						
MARK	SIZE	SHAPE	SPACING	NO.	LENGTH	WEIGHT
S.5 A	3/4"	STRAIGHT	5 1/2"	82	8'-6"	1047
T2a	1/2"	"	1'-0"	9	35'-6"	213
T2b	1/2"	"	1'-0"	14	5'-6"	52
V2a	1/2"	"	1'-0"	28	10'-0"	187
W2a	1/2"	BENT	1'-0"	20	12'-9"	170
W2b	1/2"	BENT	1'-0"	28	10'-0"	187
W2c	1/2"	STRAIGHT	1'-0"	36	8'-0"	192
W2d	1/2"	"	SHOWN	4	11'-6"	31
W2e	1/2"	BENT	1'-0"	28	5'-0"	94
					TOTAL	2173

ESTIMATED QUANTITIES	
Excavation and backfill	60 Cu. Yds.
1:6 1/2 Concrete (Footings)	12.3 Cu. Yds.
1:5 1/2 Concrete (Slab)	9.0 Cu. Yds.
1:5 1/2 Concrete (headers & cut-off wall)	2.3 Cu. Yds.
1:5 1/2 Concrete (Sidewalls)	7.1 Cu. Yds.
1:5 1/2 Concrete (Wingwalls)	8.3 Cu. Yds.
1:5 1/2 Concrete (Cap over old walls)	3.2 Cu. Yds.
Total 1-5 1/2 Concrete	29.9 Cu. Yds.
Reinforcing steel	2173 Lbs.
Removal of necessary parts of the existing structure	Lump Sum
Temporary detour bridge and approaches	Lump Sum

These data were taken with diligent effort and are believed to represent the true character and locations of the subfoundation materials; however the State of Ohio does not guarantee the accuracy thereof.



Note: All wings have same dimensions.

NOTE: All exposed edges to be chamfered 3/4"

Note: Present pavement over structure is surface treated macadam. Upon completion of the backfill over the structure the macadam pavement will be replaced by the State M&R Forces.

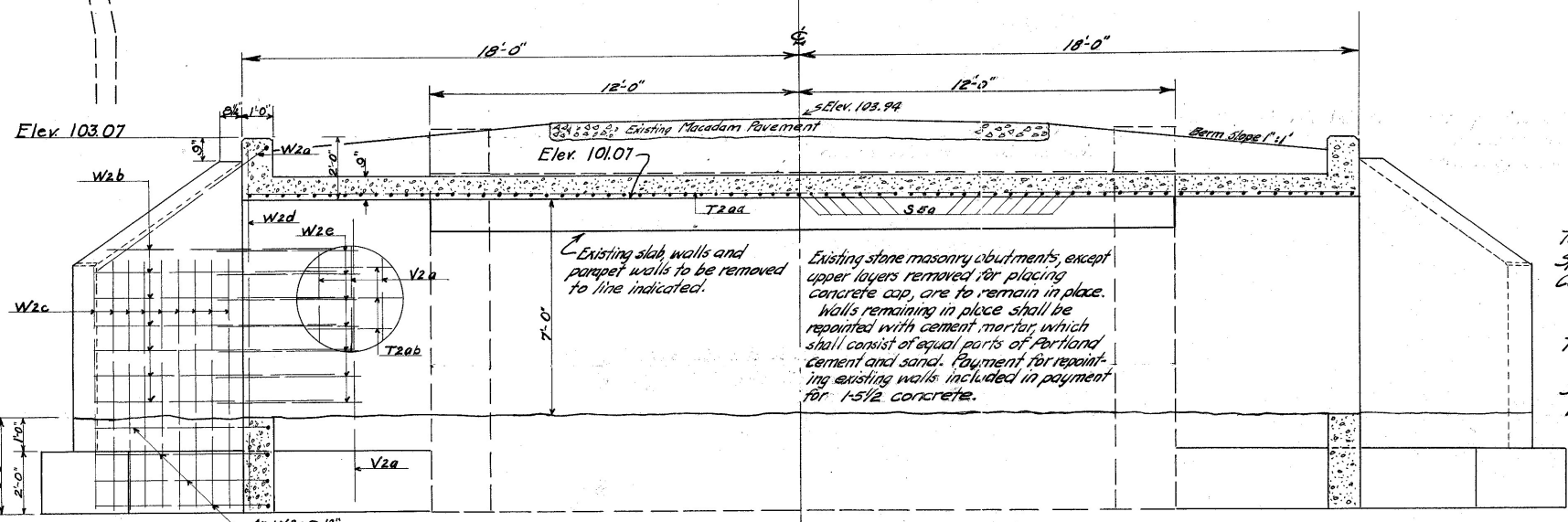
Note: All stones removed from present structure to be stored along the R/W at the disposal of the State Highway Dept.

Data on Existing Structure
 Type - Stone Masonry Culvert
 Span 7 ft. Length 24 ft. Height 7 ft.
 Condition - Walls suitable for extending

Data on Proposed Structure
 Type - Concrete slab top culvert.
 extensions. Dwg No. 5C-A
 Span 7 ft. Length 36 ft. Clear height 7'-0"
 Work Required: Remove necessary parts of existing structure. Build concrete extensions and slab as shown on plan.

Note: R/W for temporary run-around 30' x 300' on east side of road.

R/W 60 ft.
Structure 119.5



LONGITUDINAL SECTION ON 4

PLAN FOR REPAIR AND EXTENSION OF SLAB TOP CULVERT OVER COUNTY DITCH
 STATE OF OHIO DEPARTMENT OF HIGHWAYS
 BUREAU OF BRIDGES
 Sec. 5, T7N, R4E, Brady Township, Williams County
 SURVEYED DESIGNED DRAWN CHECKED REVIEWED REVISIONS
 B.G.K. B.G.K. B.S. 4/9/32

B.M. Spite in root of 36" Elm Tree to east of culvert site. Elev. 100.00

SUMMARY OF QUANTITIES

Structure No	Record Bridge No	Type	Excavation			Concrete			Reinf. Steel lbs.	1/4" Prem. Exp. Filler Sp. Ft.	Railing Type R/F Lin. Ft.	Dowel Holes Lin. Ft.	Removal of necessary parts of existing structure	Removal of existing bridge	Cofferdams sheeting and pumping	Maintenance of traffic over existing structure	Temporary detour bridge and approaches	Timber Piling (to establish unit price) Lin. Ft.	Remarks
			Dry	Wet	Channel	1-6 1/2 Footers	1-6 1/2 Walls & Wings	1-5 1/2											
STRUCTURES UNDER 20 FT. SPAN																			
1		Concrete Slab Top Cul. Exten.	30			4.9	20.1	1221			48	lump			lump				Build extensions to existing concrete slab top culvert.
2	WI-127-101	Concrete Slab Bridge	70	60		33.2	48.1	31.4	4787	31	40		lump	lump		lump			Build concrete slab bridge.
3	WI-127-122	Concrete Slab Top Cul.	112		25	14.1	38.4	2949					lump			lump			Build concrete slab top culvert.
4		Concrete Slab Top Cul. Exten.	25			2.7	13.9	792			48	lump			lump		1		Build extensions to existing concrete culvert.
5		Concrete Slab Top Cul. Exten.	60			12.3	28.9	2173					lump			lump			Build concrete extensions to existing stone masonry culvert.
6	WI-127-160	Concrete Slab Bridge Exten.	30	40	20	15.1	27.7	10.3	1494	30	38.5	12	lump	lump	lump		1		Build extensions to existing concrete slab bridge.
7	WI-127-166	Concrete Slab Bridge Exten.	30	50	20	17.4	27.1	10.1	1768	30	38	75	lump	lump	lump		1		Build extensions to existing concrete slab bridge.
Totals			357	150	65	99.7	102.9	154.1	15184	91	114.5	183	lump	lump	lump	lump	lump	1	

Maintaining lights, signs and barricades. ✓
Premium on Industrial Insurance. ✓

WILLIAMS COUNTY S.H. 307 SEC. 6, D. 1107 (Adp) 58B-1