

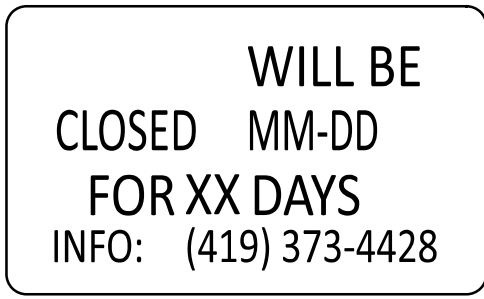
ITEM 614, MAINTAINING TRAFFIC

A MINIMUM OF ONE LANE OF TRAFFIC IN EACH DIRECTION SHALL BE MAINTAINED AT ALL TIMES, EXCEPT THAT A CLOSURE AND DETOUR OF SR 64, MITCHELL ROAD AND SR 65 TRAFFIC SHALL BE ALLOWED PER THE WINDOW CONTRACT TABLE FOR CONSTRUCTION OF THE BRIDGE REPLACEMENTS.

SHOULD THE CONTRACTOR FAIL TO MEET ANY OF THESE REQUIREMENTS, THE CONTRACTOR SHALL BE ASSESSED A DISINCENTIVE PER THE WINDOW CONTRACT TABLE (PN 129).

WINDOW CONTRACT TABLE				
DESCRIPTION OF CRITICAL WORK	CALENDAR DAYS TO COMPLETE	DISINCENTIVE \$ PER DAY	WORK WINDOW	
			START	END
WOO-64-5.78	45	\$7,500	CONTRACT EXECUTION DATE NO WORK SHALL TAKE PLACE AND SR 64 SHALL REMAIN OPEN DURING THE WOOD COUNTY FAIR AND THE NATIONAL TRACTOR PULLING CHAMPIONSHIPS (LATE JULY - MID AUGUST).	PROJECT COMPLETION DATE
WOO-65-6.18	75	\$7,500	CONTRACT EXECUTION DATE NO WORK SHALL TAKE PLACE AND SR 65 SHALL REMAIN OPEN OCTOBER 10-12, 2025 FOR THE APPLE BUTTER FESTIVAL.	PROJECT COMPLETION DATE
WOO-65-23.39	105	\$5,000	5/1/2026	8/15/2026
ALL WORK ON PROJECT	-	PER C&MS 108.07	CONTRACT EXECUTION DATE	PROJECT COMPLETION DATE

THE FOLLOWING NOTICE OF CLOSURE SIGN (W20-H13) SHALL BE ERECTED BY THE CONTRACTOR PRIOR TO THE SCHEDULED ROAD CLOSURE IN ACCORDANCE WITH THE NOTICE OF CLOSURE TIME TABLE BELOW.



W20-H13-60

THE SIGNS SHALL BE ERECTED ON THE RIGHT-HAND SIDE OF THE ROAD FACING TRAFFIC. THEY SHALL BE PLACED SO AS NOT TO INTERFERE WITH THE VISIBILITY OF ANY OTHER TRAFFIC CONTROL SIGNS. ON ROADWAYS, THEY SHOULD BE ERECTED AT OR NEAR THE POINT OF CLOSURE.

NOTICE OF CLOSURE SIGN TIME TABLE		
ITEM	DURATION OF CLOSURE	SIGN DISPLAYED TO PUBLIC
RAMP & ROAD CLOSURES	>= 2 WEEKS	14 CALENDAR DAYS PRIOR TO CLOSURE
	> 12 HOURS & < 2 WEEKS	7 CALENDAR DAYS PRIOR TO CLOSURE
	<= 12 HOURS	2 BUSINESS DAYS PRIOR TO CLOSURE

THE CONTRACTOR SHALL PROVIDE, ERECT AND MAINTAIN STANDARD 48 X 30 INCH ROAD CLOSED AHEAD SIGNS, SIGN SUPPORTS, BARRICADES AND LIGHTS, AS DETAILED IN SCD MT-101.60 AT THE FOLLOWING LOCATIONS DURING PERIODS IN WHICH AFFECTED ROADS ARE CLOSED TO TRAFFIC.

WOO-65-23.39 AS SHOWN ON SHEET P.17.
S.R 65 (DIXIE HWY) JUST NORTH OF LIME CITY RD
S.R 65 (SUPERIOR ST) JUST SOUTH OF EAGLE POINT RD

THE CONTRACTOR SHALL PROVIDE, ERECT AND MAINTAIN SIGNS AND SIGN SUPPORTS, AS DETAILED IN THE OHIO MANUAL OF UNIFORM TRAFFIC CONTROL DEVICES, AND TYPE III BARRICADES OF THE TYPE AND LOCATION AS FOLLOWS:

WOO-64-5.78 ON EITHER SIDE OF THE CLOSURE LOCATION.
S.R. 64 (HASKINS RD) JUST NORTH OF C.R. 208 (BISHOP RD) R11-3
S.R. 64 (HASKINS RD) JUST SOUTH OF C.R. 184 (KELLOGG RD) R11-3

WOO-65-6.18 ON EITHER SIDE OF THE CLOSURE LOCATION.
S.R. 65 (W RIVER RD) JUST EAST OF OLD COACH RD R11-3
S.R. 65 (W RIVER RD) JUST WEST OF T.R. 221(BRILLHEART RD) R11-3

THE FOLLOWING ESTIMATED QUANTITIES HAVE BEEN INCLUDED IN THE GENERAL SUMMARY FOR USE AS DETERMINED BY THE ENGINEER FOR MAINTENANCE OF TRAFFIC.

ITEM 410 - TRAFFIC COMPACTED SURFACE, TYPE A OR B
100 CU. YD.

ALL WORK AND TRAFFIC CONTROL DEVICES SHALL BE IN ACCORDANCE WITH C&MS 614 AND OTHER APPLICABLE PORTIONS OF THE SPECIFICATIONS, AS WELL AS THE OHIO MANUAL OF UNIFORM TRAFFIC CONTROL DEVICES. PAYMENT FOR ALL LABOR, EQUIPMENT AND MATERIALS SHALL BE INCLUDED IN THE LUMP SUM CONTRACT PRICE FOR ITEM 614, MAINTAINING TRAFFIC, UNLESS SEPARATELY ITEMIZED IN THE PLAN.

STATE ROUTE DETOUR SIGNING

THE DEPARTMENT WILL PROVIDE, ERECT, MAINTAIN AND SUBSEQUENTLY REMOVE ALL STATE ROUTE DETOURS SIGNS ON THIS PROJECT.

TRAFFIC SHALL BE DETOURED DURING CONSTRUCTION AS FOLLOWS:

WOO-64-5.78 NORTH DETOUR AT S.R. 25 DIRECT THE DETOURED TRAFFIC NORTH ON S.R. 25, TO S.R 582 WEST, TO S.R. 64

WOO-64-5.78 SOUTH DETOUR AT S.R. 582 DIRECT THE DETOURED TRAFFIC EAST ON S.R. 582, TO S.R 25 SOUTH, TO S.R. 64

WOO-65-6.18 NORTH DETOUR AT S.R. 235 DIRECT THE DETOURED TRAFFIC SOUTH ON S.R. 235, TO U.S. 6 EAST, TO S.R. 25 NORTH, TO S.R. 582 WEST, TO S.R. 65.

WOO-65-6.18 SOUTH DETOUR AT S.R. 582 DIRECT THE DETOURED TRAFFIC EAST ON S.R. 582, TO S.R. 25 SOUTH, TO U.S. 6 WEST, TO S.R. 235 NORTH, TO S.R. 65

WOO-65-23.39 NORTH DETOUR AT S.R. 199 DIRECT THE DETOURED TRAFFIC SOUTH ON S.R. 199, TO S.R. 795 EAST, TO I-75 NORTH, TO S.R. 65.

WOO-65-23.39 SOUTH DETOUR AT I-75 DIRECT THE DETOURED TRAFFIC SOUTH ON I-75, TO S.R. 795 WEST, TO S.R. 199 NORTH, TO S.R. 65.

LOCAL AND PEDESTRIAN DETOUR SIGNING

THE CONTRACTOR WILL PROVIDE, ERECT, MAINTAIN AND SUBSEQUENTLY REMOVE ALL DETOUR SIGNS FOR THE MITCHELL ROAD DETOUR AS SHOWN ON SHEET P.15, AND THE S.R. 65 (DIXIE HWY) PEDESTRIAN DETOUR AS SHOWN ON SHEET P.16.

LOCAL AND PEDESTRIAN DETOUR SIGNING WILL BE PAID UNDER ITEM 614 - DETOUR SIGNING, LUMP SUM.

NOTIFICATION OF TRAFFIC RESTRICTIONS

THROUGHOUT THE DURATION OF THE PROJECT, THE CONTRACTOR SHALL NOTIFY THE PROJECT ENGINEER IN WRITING OF ALL TRAFFIC RESTRICTIONS AND UPCOMING MAINTENANCE OF TRAFFIC CHANGES. THE CONTRACTOR SHALL ENSURE THE WRITTEN NOTIFICATION IS SUBMITTED IN A TIMELY MANNER TO ALLOW THE PROJECT ENGINEER TO MEET THE REQUIRED TIME FRAMES SET FORTH IN THE TABLE BELOW TO INFORM THE SPECIAL HAULING PERMITS SECTION (HAULING.PERMITS@DOT.OHIO.GOV) AND THE DISTRICT PUBLIC INFORMATION OFFICE (PIO). THIS NOTIFICATION SHALL BE RECEIVED BY THE PROJECT ENGINEER PRIOR TO THE PHYSICAL SETUP OF ANY APPLICABLE SIGNS OR MESSAGE BOARDS.

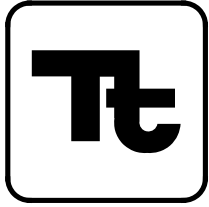
INFORMATION SHOULD INCLUDE, BUT IS NOT LIMITED TO, ALL CONSTRUCTION ACTIVITIES THAT IMPACT OR INTERFERE WITH TRAFFIC AND SHALL LIST THE SPECIFIC LOCATION, TYPE OF WORK, ROAD STATUS, DATE AND TIME OF RESTRICTION, DURATION OF RESTRICTION, NUMBER OF LANES MAINTAINED, NUMBER OF LANES CLOSED, MINIMUM VERTICAL CLEARANCE, MINIMUM WIDTH OF DRIVABLE PAVEMENT, DETOUR ROUTES, IF APPLICABLE, AND ANY OTHER INFORMATION REQUESTED BY THE PROJECT ENGINEER.

NOTIFICATION TIME TABLE		
ITEM	DURATION OF CLOSURE	NOTICE DUE TO PERMITS & PIO
RAMP & ROAD CLOSURES	>= 2 WEEKS > 12 HOURS & < 2 WEEKS <= 12 HOURS	21 CALENDAR DAYS PRIOR TO CLOSURE 14 CALENDAR DAYS PRIOR TO CLOSURE 4 BUSINESS DAYS PRIOR TO CLOSURE
LANE CLOSURES & RESTRICTIONS	>= 2 WEEKS < 2 WEEKS	14 CALENDAR DAYS PRIOR TO CLOSURE 5 BUSINESS DAYS PRIOR TO CLOSURE
START OF CONST. & TRAFFIC PATTERN CHANGES	N/A	14 CALENDAR DAYS PRIOR TO IMPLEMENTATION

ANY UNFORESEEN CONDITIONS NOT SPECIFIED IN THE PLANS REQUIRING TRAFFIC RESTRICTIONS SHALL ALSO BE REPORTED TO THE PROJECT ENGINEER USING THE NOTIFICATION TIME TABLE.

THE ODOT PROJECT ENGINEER SHALL FORWARD THE CONSTRUCTION NOTIFICATION INFORMATION THE FOLLOWING DEPARTMENTS WITHIN THE TIMELINE OUTLINED IN TEM PART 642-58 TO ENSURE COMPLIANCE WITH FEDERAL NOTIFICATION REQUIREMENTS:

- A. DISTRICT PUBLIC INFORMATION OFFICER (PIO) BY PHONE AT: (419) 373-4428 OR EMAIL AT: D02.PIO@DOT.OHIO.GOV
- B. DISTRICT PERMIT SECTION BY PHONE AT: (419) 373-4301 OR EMAIL AT: D02.PERMITS@DOT.OHIO.GOV



ITEM 513 - STRUCTURAL STEEL, MISC.: SANITARY STRUCTURAL SUPPORT

THIS ITEM INCLUDES THE FABRICATION AND INSTALLATION OF STRUCTURAL SUPPORTS FOR A PROPOSED 10" DUCTILE IRON PIPE GRAVITY SANITARY SEWER SUPPORTED FROM THE PROPOSED BRIDGE DECK FASCIA AND PARAPET.

MATERIALS

1. PROVIDE ASTM A 709 GRADE 36 STEEL SUPPORT ASSEMBLIES AS SHOWN ON THE DETAIL SHEETS AND ACCORDING TO ODOT CMS 711.01, GALVANIZED AFTER ASSEMBLY ACCORDING TO ODOT CMS 711.02.
2. PROVIDE ROLLER SUPPORTS ADEQUATE TO SUPPORT THE DUCTILE IRON PIPE, FLOWING FULL. PROVIDE EITHER NON-METALLIC COMPONENTS OR HOT DIPPED GALVANIZED STEEL COMPONENTS.
3. PROVIDE GALVANIZED HIGH STRENGTH BOLTS AND WASHERS IN ACCORDANCE WITH CMS 711.09.

4. PROVIDE 3/4" LOOP FERRULE INSERTS WITH A MINIMUM 2200 POUND SAFE WORKING TENSION LOAD WITH AN ELECTRO-GALVANIZED FINISH. PROVIDE F42 BY DAYTON SUPERIOR, FX-5 BY MEADOW BURKE OR AN APPROVED EQUAL.

CONSTRUCTION

1. CAST LOOP FERRULE INSERTS INTO THE DECK FASCIA AND PARAPET.
2. ANCHOR THE SUPPORT BRACKETS USING 3/4" HIGH STRENGTH BOLTS AND WASHERS.
3. INSTALL ROLLER SUPPORTS ON THE SUPPORT BRACKETS.
4. INSTALL THE DUCTILE IRON SANITARY PIPE.

PAYMENT WILL BE MADE AT THE UNIT PRICE BID FOR EACH ITEM 513 - STRUCTURAL STEEL, MISC.: SANITARY STRUCTURAL SUPPORT AND INCLUDES ALL MATERIALS, LABOR AND EQUIPMENT REQUIRED FOR THE STRUCTURAL SUPPORT.

ITEM 530 - SPECIAL - FORM LINER

CONCRETE FORMLINERS SHALL BE USED ON THE PARAPETS ACCORDING TO THE DETAILS IN THE PLANS.

THE FORMLINER USED SHALL MEET THE DETAILS SHOWN IN THE PLANS INCLUDING DEPTH OF RELIEF AND SIZE OF STONE PATTERN. HORIZONTAL JOINTS IN THE STONE PATTERN SHALL BE ALIGNED AND AT THE SAME ELEVATION. THE FINISHED TEXTURE OF THE ROUGH CUT STONE SHALL BE SIMILAR TO THAT OF RUBBED CONCRETE.

FORMLINERS SHALL MATCH THE DIMENSIONAL SPECIFICATIONS OF THE FOLLOWING MANUFACTURER OR APPROVED EQUAL.

PATTERN #893A (15" CUSTOM QUARRY STONE)
ARCHITECTURAL POLYMERS
1220 LITTLE GAP ROAD
PALMERTON, PA 18071
610-824-3322
WWW.APFORMLINER.COM

THE FORMLINER MANUFACTURER SHALL SUBMIT EVIDENCE OF AT LEAST TWO SIMILAR ARCHITECTURAL CONCRETE CONSTRUCT/ON PROJECTS WITHIN THE PAST FIVE YEARS FOR A REVIEW AND APPROVAL BY THE ENGINEER. COMPLETE SHOP DRAWINGS DETAILING THE STONE PATTERN SHALL BE SUBMITTED IN ACCORDANCE WITH 501.04 FOR APPROVAL PRIOR TO PLACING ANY CONCRETE WHERE THE FORMLINERS WILL BE USED. SHOP DRAWINGS SHALL INCLUDE FORMLINER INSTALLATION AND CASTING, AND INDICATE FORMLINER BACKUP, REVEAL, AND CHAMFER STRIP LOCATIONS. THE CONTRACTOR SHALL COORDINATE WITH THE FORMLINER MANUFACTURER TO ASSURE UNDERSTANO/G OF FORMLINER USE, TEST PANEL MOCK-UP REQUIREMENTS, AND FINAL CONSTRUCT/ON PROCEDURES.

MATERIALS:
THE FORMLINER SHALL BE FABRICATED WITH SHAPES THAT ALLOW REMOVAL OF THE FORMS WITHOUT DAMAGE OR VISUAL IMPAIRMENT OF THE CONCRETE, AND SHALL HAVE 1/8" MINIMUM RADII WITH NO SHARP EDGES. THE FORMLINER SHALL BE CAPABLE OF WITHSTANDING APPLIED CONCRETE POUR PRESSURE WITHOUT LEAKAGE, PHYSICAL DEFECT OR VISUAL IMPAIRMENT.

CONSTRUCTION REQUIREMENTS:
FORMLINERS SHALL BE CLEANED BEFORE EACH USE. DAMAGED FORMLINERS WHOSE CONTINUED USE OR REPAIR WOULD NEGATIVELY IMPACT THE AESTHETICS OF THE FINISHED CONCRETE SHALL BE REPLACED. FORMLINER JOINTS SHALL BE SEALED TO PREVENT CEMENT PASTE FROM BLEEDING. FORMLINERS SHALL BE INSTALLED IN ACCORDANCE WITH THE APPROVED SHOP DRAWINGS. CHAMFERED CORNERS SHALL FORM SMOOTH, SOLID, UNBROKEN CONTINUOUS SURFACES WHICH ARE UNIFORMLY STRAIGHT. AN APPROVED COMPATIBLE FORMLINER RELEASE AGENT SHALL BE APPLIED AT A RATE RECOMMENDED BY THE MANUFACTURER.

AS PART OF THIS ITEM, A 7 FOOT LONG SECTION OF PARAPET THAT COMPRISES A MINIMUM OF ONE COMPLETED STONE BLOCK PATTERN WILL BE CAST BY THE CONTRACTOR FOR APPROVAL BY THE ENGINEER. IF THE SECTION DOES NOT MEET THE ENGINEER'S APPROVAL, THE PROPOSED FORMLINER MAY BE REJECTED. THE SECTION MUST BE APPROVED BEFORE PLACING ANY CONCRETE WHERE THE FORMLINERS WILL BE USED. REJECTION OF THE SECTION WILL REQUIRE CONSTRUCTION OF ANOTHER SECTION UNTIL APPROVAL JS GRANTED. THE PARAPET SECTION SHALL USE ACTUAL PROJECT SPECIFIC MATERIALS, METHODS AND WORKMANSHIP, INCLUDING CONCRETE MIX (CEMENT TYPE, AGGREGATE GRADATION, SLUMP, WATER/CEMENT RATIO, PLASTICIZERS AND ADDITIVES), FORMLINER AND FORMWORK SYSTEMS, INSERTS, FORM RELEASE AGENTS, PLACEMENT RATE, FORM PRESSURES, AND JOINT SEALING, VIBRATING, AND STRIPPING PRACTICES. ANY INTENDED PATCHING OR REPAIR PROCEDURES FOR THE CORRECTION OF MINOR DEFECTS THAT DO NOT RESULT IN REJECTION OF THE ENTIRE PARAPET SHALL BE DEMONSTRATED ON THE SECTION.

THE ACCEPTED PARAPET SECTION SHALL BE THE STANDARD BY WHICH THE FINAL CONSTRUCTION WILL BE EVALUATED FOR TECHNICAL AND AESTHETIC MERIT. THE PARAPET SECTION SHALL BE CONSTRUCTED AT THE CONSTRUCTION SITE, OR AT AN ALTERNATE LOCATION AGREED UPON BY THE ENGINEER. UPON COMPLETION OF THE FINAL CONSTRUCTION, THE CONTRACTOR SHALL BE RESPONSIBLE FOR REMOVAL AND DISPOSAL OF THE PARAPET SECTION MOCK-UP.

PORTIONS OF THE PARAPET DETAILED IN THE PLAN SET SHALL BE CAST WITH STONE FACING FORMLINER TEXTURE AND BE SEALED WITH ITEM 512 - SEALING OF CONCRETE SURFACES (EPOXY-URETHANE).

METHOD OF MEASUREMENT:
DRY STACK STONE FORMLINERS WILL NOT BE MEASURED INDIVIDUALLY FOR PAYMENT UNDER THIS ITEM.

BASIS OF PAYMENT:
ITEM 530, SPECIAL - FORM LINER, WILL BE PAID FOR AT THE CONTRACT SQ. FT. PRICE. THE WORK SHALL INCLUDE FABRICATION AND ERECTION OF FORMLINERS, PREPARATION OF FORMLINER SHOP DRAWINGS, AND CONSTRUCTION AND REMOVAL OF THE PRE-CONSTRUCTION PARAPET SECTION, AND SHALL INCLUDE ALL LABOR, MATERIALS, EQUIPMENT AND INCIDENTALS REQUIRED TO COMPLETE THIS ITEM.

THE DEPARTMENT WILL PAY FOR SEALING OF CONCRETE SURFACES SEPARATELY UNDER ITEM 512- SEALING OF CONCRETE SURFACES (EPOXY-URETHANE). THE EPOXY URETHANE COATING SHALL BE FEDERAL COLOR NO. 36492 - GRAY.

ITEM 517 - RAILING (CONCRETE PARAPET WITH TWIN STEEL TUBE RAILING), AS PER PLAN

CONSTRUCT RAILING IN ACCORDANCE WITH STANDARD DRAWING BR-2-15, EXCEPT MODIFIED PER THESE PLANS, INCLUDING FURNISHING A MODIFIED STEEL POST BASEPLATE, AND COATING THE STEEL RAILING AFTER GALVANIZING.

SHOP DRAWINGS

IN ADDITION TO THE REQUIREMENTS OF 501 AND THE REQUIREMENTS IN THESE NOTES, SUBMIT FOR REVIEW AND ACCEPTANCE, THREE (3) COPIES OF SHOP DRAWINGS, UNLESS ADDITIONAL COPIES ARE REQUESTED. DO NOT BEGIN FABRICATION UNTIL WRITTEN ACCEPTANCE OF THE SUBMITTED DRAWINGS HAS BEEN RECEIVED.

SELECT A FABRICATOR FROM THE PRE-QUALIFIED FABRICATORS LIST IN EFFECT AT THE DATE OF THE CONTRACT LETTING. SELECT A FABRICATOR THAT IS AT LEAST PRE-QUALIFIED AT LEVEL UF. BEFORE OR AT THE PRECONSTRUCTION CONFERENCE, PROVIDE A WRITTEN NOTIFICATION TO THE DISTRICT CONSTRUCTION ENGINEER AND OFFICE OF MATERIALS MANAGEMENT OF THE SELECTED FABRICATORS.

SUBMIT SHOP DRAWINGS PER 501.04, 501.04B AND 501.04C AND PER THE REQUIREMENTS IN THESE NOTES. PREPARE THE SHOP DRAWINGS BY OR UNDER DIRECT SUPERVISORY CONTROL OF AN OHIO REGISTERED PROFESSIONAL ENGINEER HAVING PERSONAL KNOWLEDGE OF AASHTO STANDARD SPECIFICATIONS FOR HIGHWAY BRIDGES AND ITEMS 513 AND 517. THE REGISTERED ENGINEER SHALL SIGN, SEAL AND DATE EACH DRAWING. HAVE QUESTIONS AND COMMENTS ADDRESSED BEFORE SUBMITTING THE SHOP DRAWINGS.

COATING:

GALVANIZE RAILING COMPONENTS IN ACCORDANCE WITH CMS 711.02. AFTER REMOVING HIGH SPOTS, THE GALVANIZED COATING SHALL BE CLEANED PER SSPC-SP1. THE CLEANING SOLUTION SHALL BE AN ALKALINE SOLUTION WITH A PH RANGING FROM A MINIMUM OF 11 TO A MAXIMUM OF 12. THIS SOLUTION CAN BE APPLIED BY IMMERSION, SPRAY OF SOFT NYLON BRUSH. FOLLOWING CLEANING WITH A HOT WATER OR HOT PRESSURE WASHER RINSE. INDIVIDUAL PIECES SHALL BE SEPARATED AND POSITIONED TO FACILITATE DRAINAGE AND DRYING. THE PIECES SHALL BE COMPLETELY DRY BEFORE PROCEEDING. AFTER

CLEANING, THE PIECES SHALL BE ABRASIVE BLASTED PER SSPC-SP7 BRUSH-OFF BLAST CLEANING. THE BLASTING OPERATION SHALL ROUGHEN THE GALVANIZED SURFACE TO AN ANGULAR SURFACE PROFILE OF 0.25 TO 0.50 MILS. THE BLASTING EQUIPMENT, TECHNIQUE AND ABRASIVE MATERIAL SHALL BE SELECTED TO PROVIDE FOR THE SPECIFIED SURFACE PROFILE WITHOUT REMOVAL OF ZINC LAYERS. THE FINAL ZINC MILAGE SHALL NOT BE LESS THAN 3.0 MILS. ALL ABRASIVE RESIDUE SHALL BE REMOVED WITH CLEAN COMPRESSED AIR OF OTHER METHODS ACCEPTABLE TO THE DEPARTMENT.

AFTER OBTAINING AN ACCEPTABLE SURFACE PROFILE, SHOP APPLY A TWO (2) COAT PAINT SYSTEM CONSISTING OF EPOXY INTERMEDIATE COAT AND A URETHANE FINISH COAT MEETING THE REQUIREMENTS OF CMS 514. THE FINISH COAT SHALL MATCH FEDERAL COLOR STANDARD NO. 595-27038 (BLACK).

THE EPOXY INTERMEDIATE COATING SHALL BE APPLIED WITHIN 24 HOURS OF THE BRUSH OFF BLASTING. THE COATINGS SHALL BE APPLIED PER CMS 514 EXCEPT THAT THE REQUIREMENTS FOR SURFACE PREPARATION AND PRIMING SHALL NOT BE PERFORMED. THE COATING SHALL BE SHOP APPLIED AS SPECIFIED IN THESE NOTES WITHOUT THE WORK LIMITATIONS SPECIFIED IN CMS 514. FIELD REPAIRS AND TOUCH-UPS SHALL FOLLOW WORK LIMITATIONS SPECIFIED PER CMS 514 AND BE AS DIRECTED BY THE ENGINEER.

THE RAILING SHALL BE INSULATED FROM BINDING CHAINS DURING TRANSPORTATION BY THE USE OF SOFTENERS AND ALL HOOKS AND SLINGS THAT ARE USED TO HOIST/ERECT THE STEEL MEMBERS SHALL BE PADDED. THE CONTRACTOR SHALL REPAIR ANY DAMAGE TO THE PAINT SYSTEM CAUSED DURING STORAGE, TRANSPORTATION AND ERECTION PER CMS 514.22.

METHOD OF MEASUREMENT:
THE DEPARTMENT WILL MEASURE THE RAILING BY THE NUMBER OF FEET OF RAILING INCLUDING END POSTS.

BASIS OF PAYMENT:

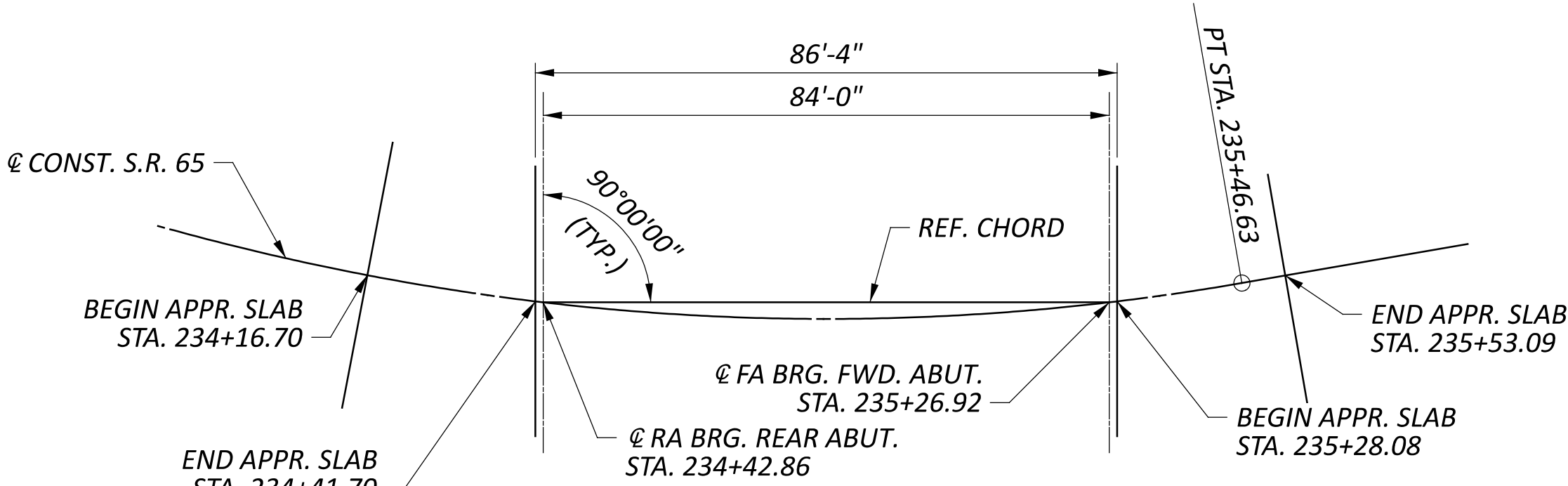
ALL MATERIALS AND LABOR TO INSTALL THE RAILING, INCLUDING THE REINFORCING STEEL, SHALL BE INCLUDED IN THE UNIT BID PRICE FOR THE RAILING.

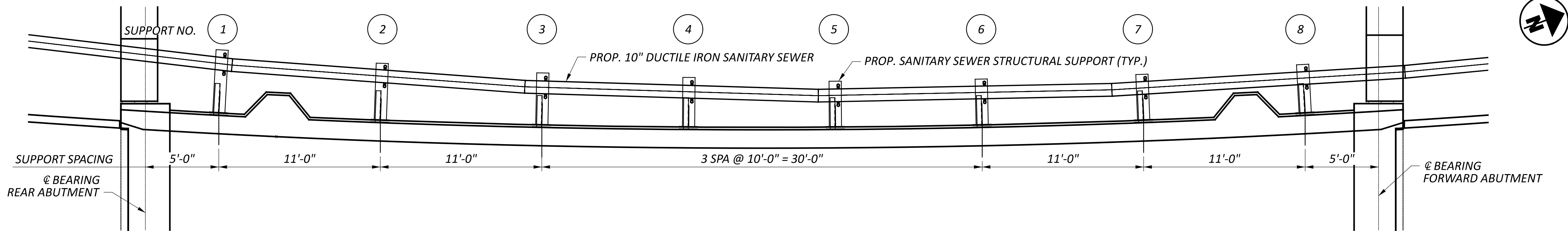
THE DEPARTMENT WILL PAY FOR ACCEPTED QUANTITIES AT THE CONTRACT PRICE FOR ITEM 517 - RAILING (CONCRETE PARAPET WITH TWIN STEEL TUBE RAILING), AS PER PLAN, PER FOOT.

ITEM 526 - REINFORCED CONCRETE APPROACH SLABS (T=15"), AS PER PLAN

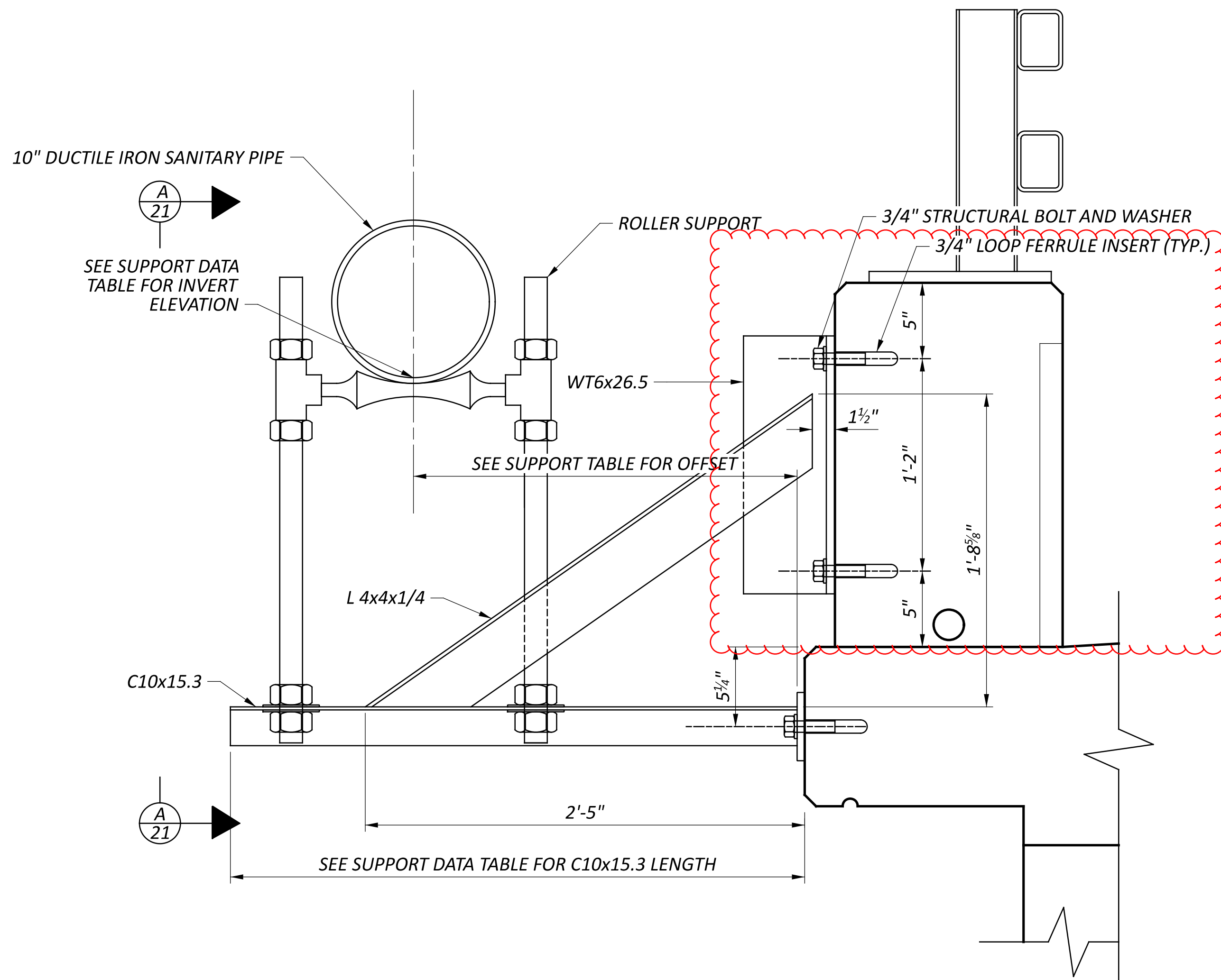
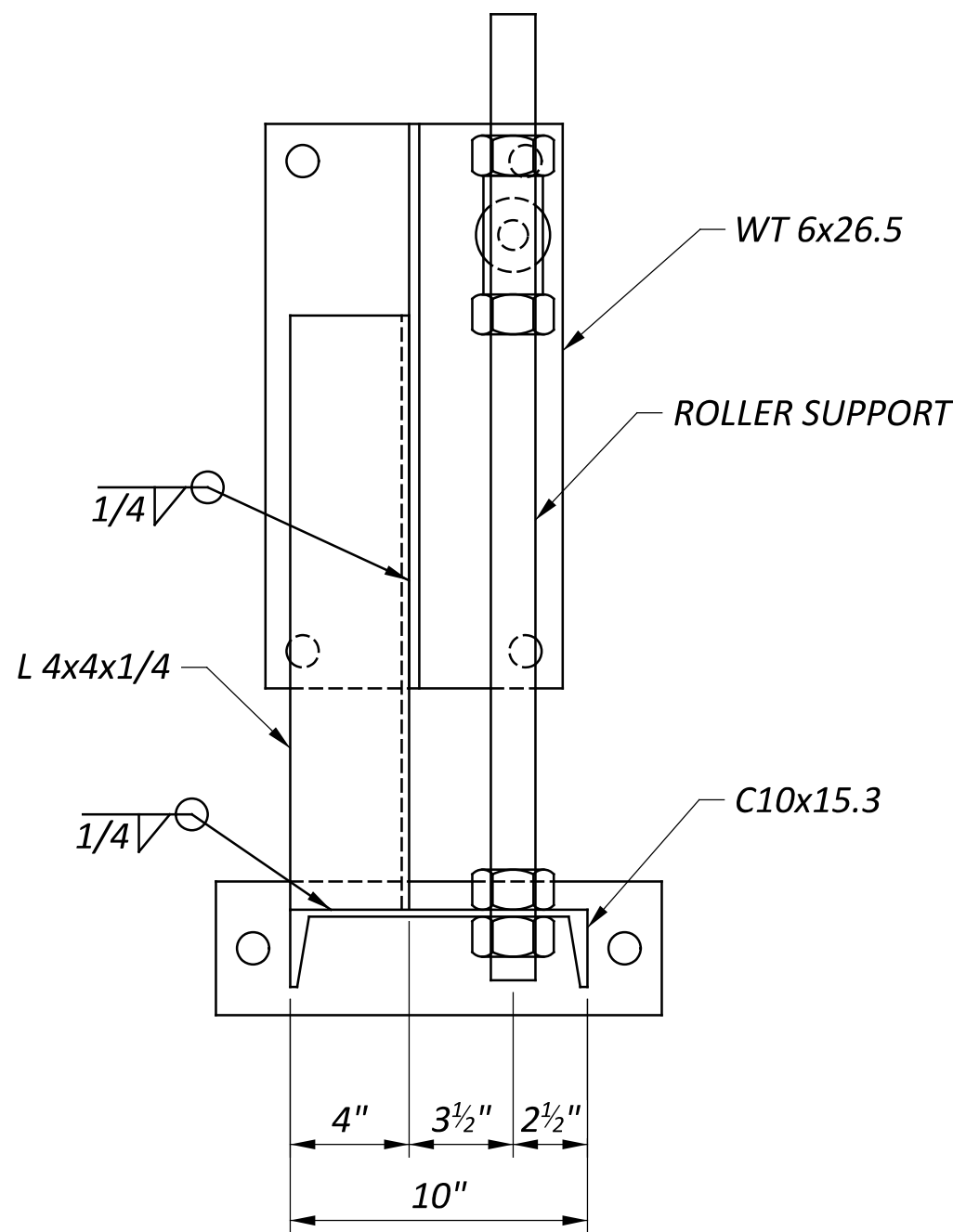
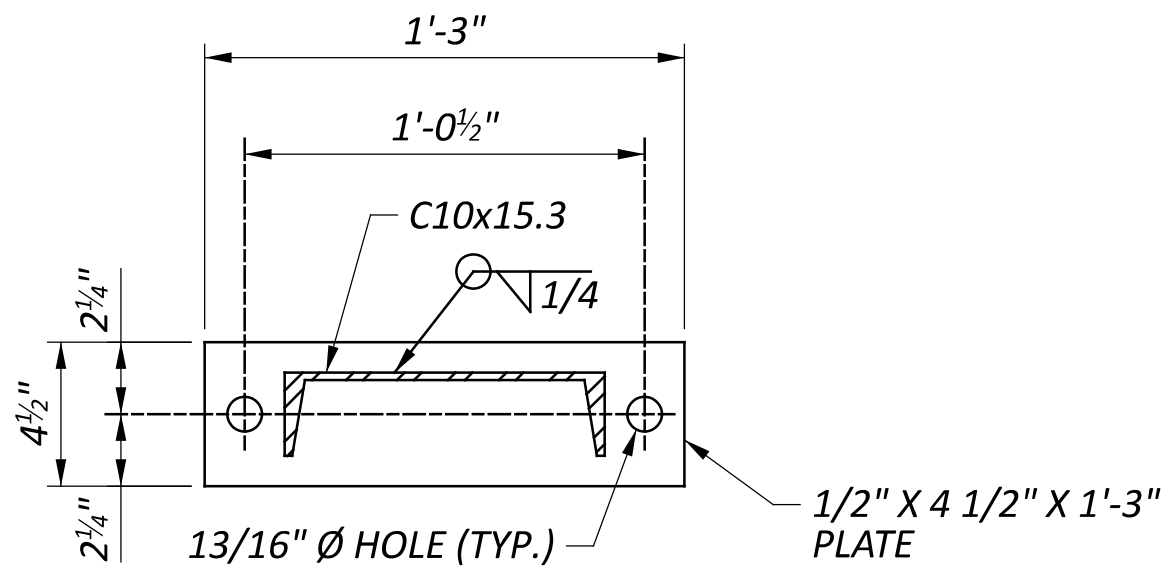
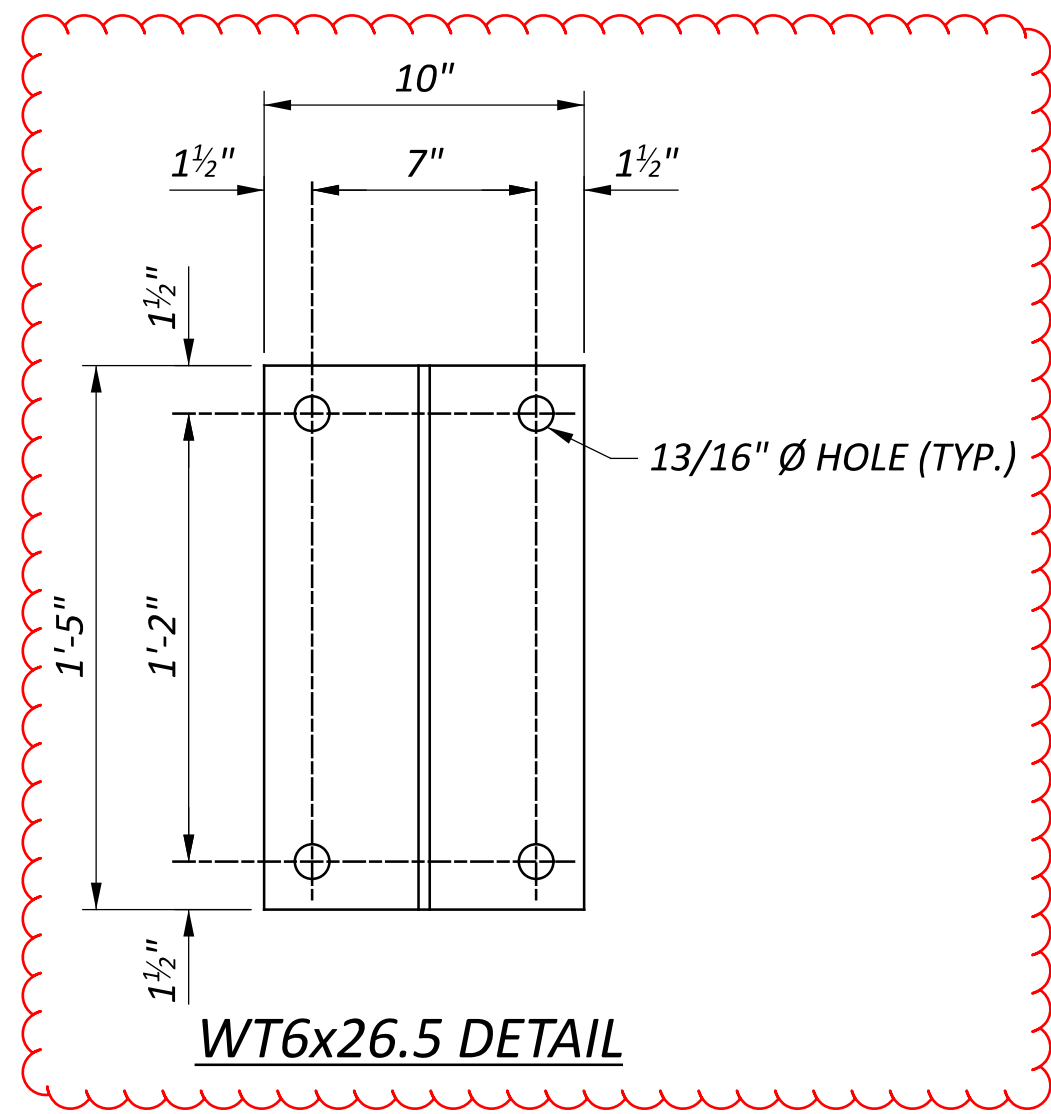
CONSTRUCT APPROACH SLABS IN ACCORDANCE WITH CMS 526, SCD AS-1-15 AND THE DETAILS ON SHEETS P.141 TO P.143.

THE DEPARTMENT WILL PAY FOR ACCEPTED QUANTITIES AT THE CONTRACT PRICE FOR THE NUMBER OF SQUARE YARDS, COMPLETE IN PLACE, WHICH INCLUDES ALL CONCRETE, CURBS, SIDEWALKS, REINFORCING STEEL, DOWELS, JOINTS AND OTHER MATERIALS.





10" SANITARY STRUCTURAL SUPPORT DATA			
SUPPORT NO.	C10x15.3 LENGTH	OFFSET TO C.L. 10" PIPE	INVERT EL. 10" PIPE
1	4'-3"	3'-3 1/2"	593.03
2	3'-10"	2'-11 1/2"	592.99
3	3'-6"	2'-6 1/4"	592.95
4	3'-4"	2'-4 3/8"	592.91
5	3'-1"	2'-1 7/16"	592.87
6	3'-1"	2'-2 1/8"	592.83
7	3'-1"	2'-1 7/8"	592.78
8	3'-3"	2'-4"	592.74



- NOTES:
- SEE SHEET 3/31 FOR GENERAL NOTES.
 - VERIFY DUCTILE IRON PIPE LAYOUT INCLUDING JOINT LOCATIONS PRIOR TO FABRICATING SUPPORTS.