



**CUY-90-14.90**

**PID 77332/85531**

---

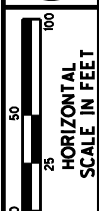
**APPENDIX LD-04**

---

**Substructure "No-Build" Zones  
(Contract Document)**

State of Ohio  
Department of Transportation  
Jolene M. Molitoris, Director

**Innerbelt Bridge  
Construction Contract Group 1 (CCG1)**



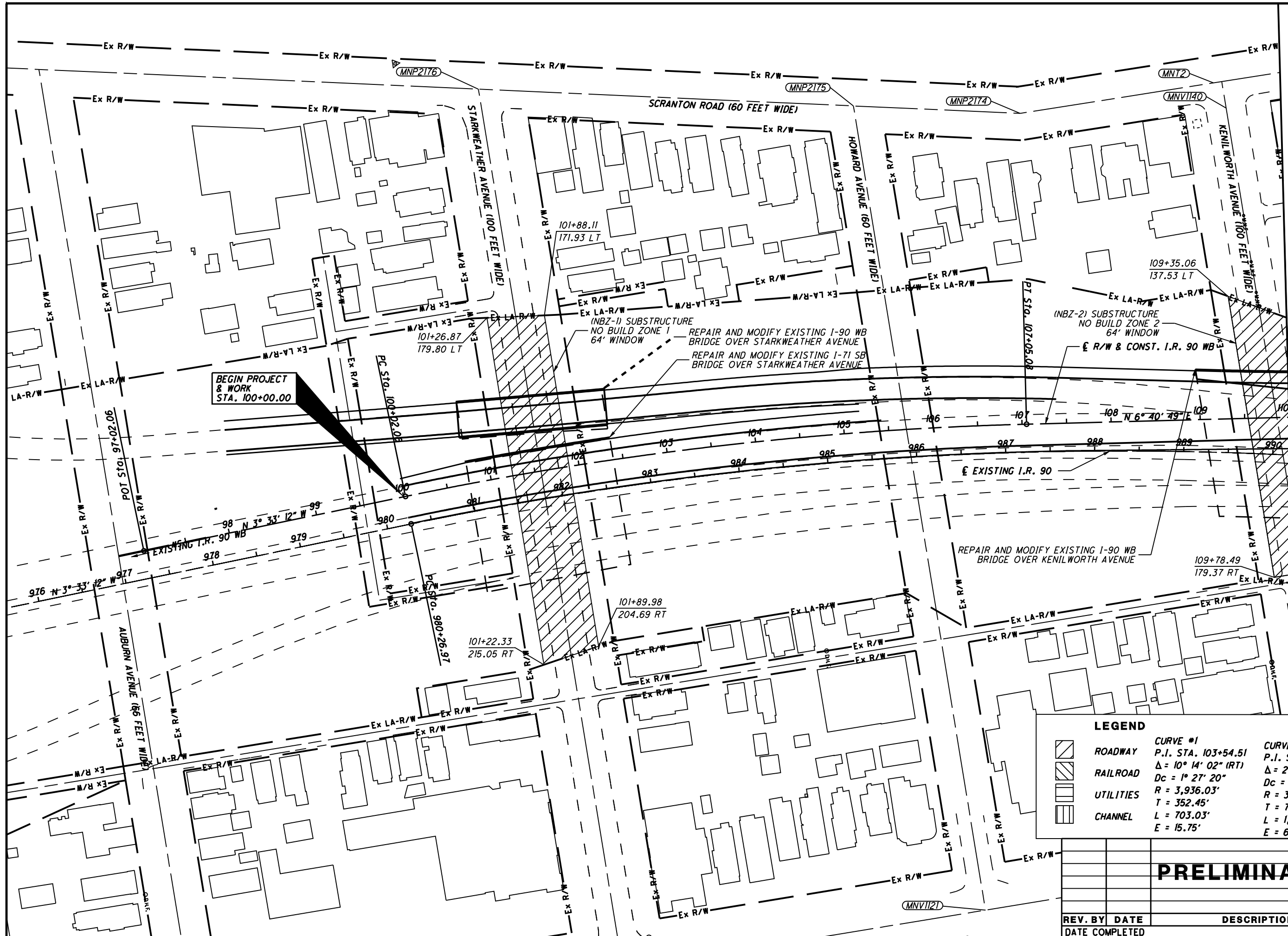
PID NO.  
**77332**

R/W DESIGNER  
RSW  
R/W REVIEWER  
LPC

**SUBSTRUCTURE "NO-BUILD" ZONES**  
STA. 100+00.00 TO STA. 110+00.00

**CUY-90-14.90**

1 / 10



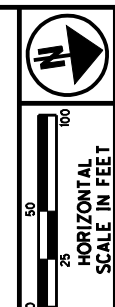
BEGIN PROJECT & WORK STA. 100+00.00

MATCHLINE STA. 110+00.00, SEE SHEET 2/9

**LEGEND**

	ROADWAY	<b>CURVE #1</b> P.I. STA. 103+54.51 Δ = 10° 14' 02" (RT) Dc = 1° 27' 20" R = 3,936.03' T = 352.45' L = 703.03' E = 15.75'	<b>CURVE #2</b> P.I. STA. 987+44.34 Δ = 20° 48' 40" (RT) Dc = 1° 28' 00" R = 3,906.53' T = 717.37' L = 1,418.94' E = 65.32'
	RAILROAD		
	UTILITIES		
	CHANNEL		

<b>PRELIMINARY</b>	
REV. BY	DATE
DATE COMPLETED	DESCRIPTION



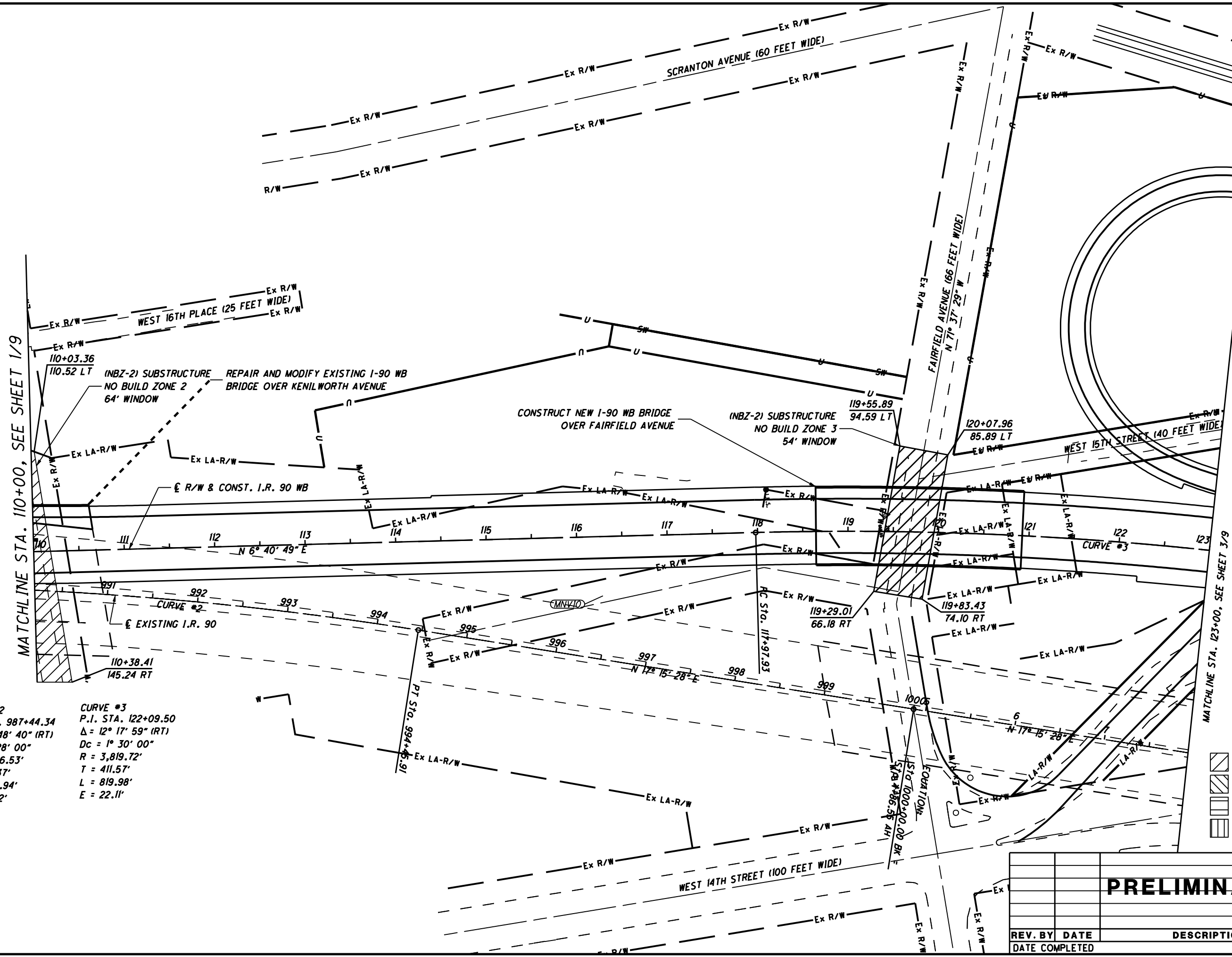
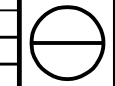
PID NO.  
**77332**

R/W DESIGNER  
RSW  
R/W REVIEWER  
LPC

**SUBSTRUCTURE "NO-BUILD" ZONES  
STA. 110+00.00 TO STA. 123+00.00**

**CUY-90-14.90**

2 / 10



**CURVE #2**  
P.I. STA. 987+44.34  
 $\Delta = 20^\circ 48' 40''$  (RT)  
 $Dc = 1^\circ 28' 00''$   
 $R = 3,906.53'$   
 $T = 717.37'$   
 $L = 1,418.94'$   
 $E = 65.32'$

**CURVE #3**  
P.I. STA. 122+09.50  
 $\Delta = 12^\circ 17' 59''$  (RT)  
 $Dc = 1^\circ 30' 00''$   
 $R = 3,819.72'$   
 $T = 411.57'$   
 $L = 819.98'$   
 $E = 22.11'$

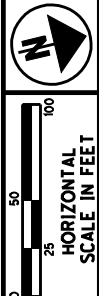
**LEGEND**

	ROADWAY
	RAILROAD
	UTILITIES
	CHANNEL

<b>PRELIMINARY</b>	
REV. BY	DATE
DATE COMPLETED	DESCRIPTION

MATCHLINE STA. 110+00, SEE SHEET 1/9

MATCHLINE STA. 123+00, SEE SHEET 3/9



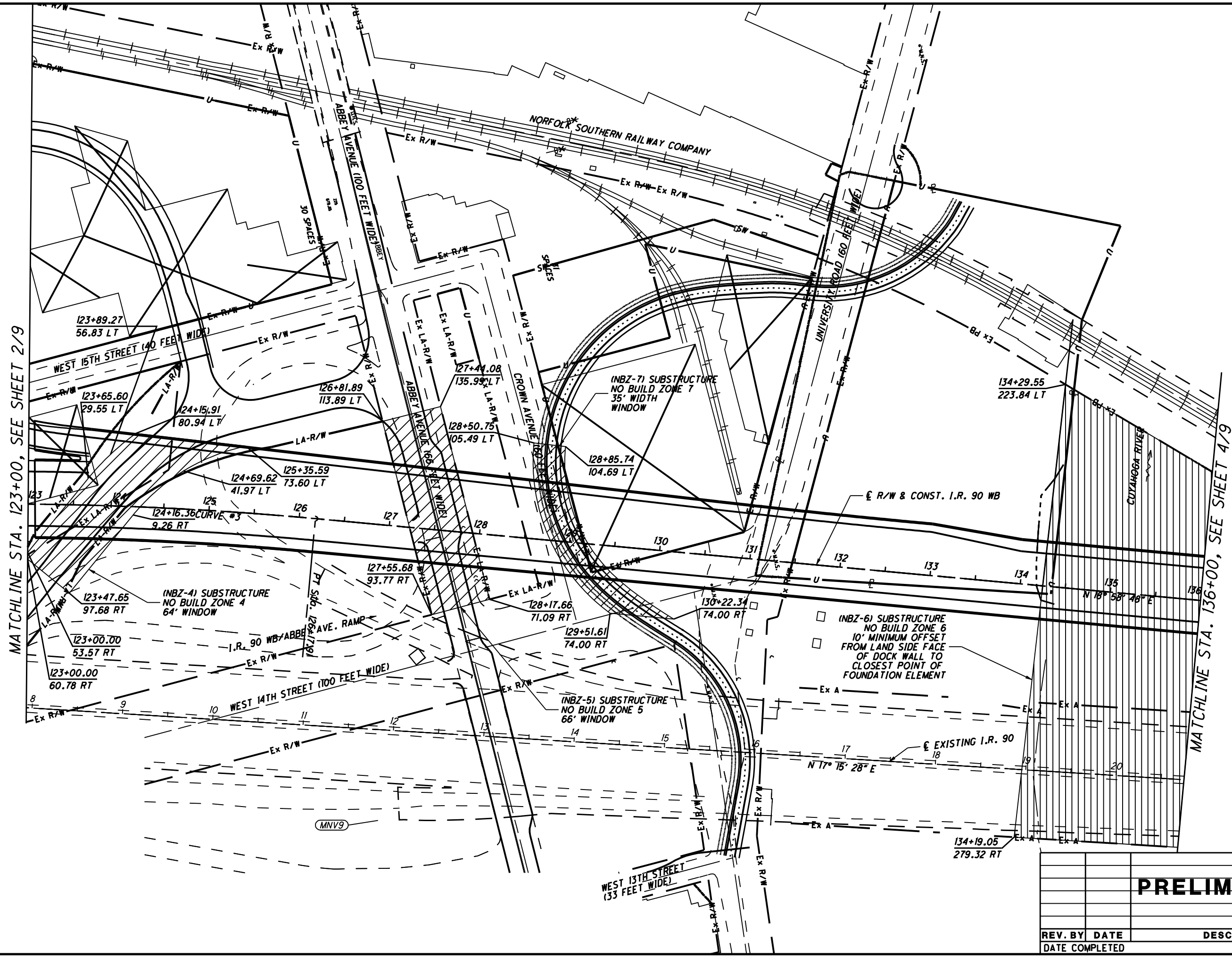
PID NO.  
**77332**

R/W DESIGNER  
**RSW**  
R/W REVIEWER  
**LPC**

**SUBSTRUCTURE "NO-BUILD" ZONES**  
**STA. 123+00.00 TO STA. 136+00.00**

**CUY-90-14.90**

3 / 10



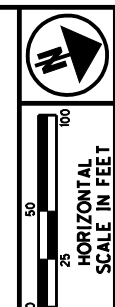
MATCHLINE STA. 123+00, SEE SHEET 2/9

MATCHLINE STA. 136+00, SEE SHEET 4/9

- LEGEND**
- ROADWAY
  - RAILROAD
  - UTILITIES
  - CHANNEL

**CURVE #3**  
 P.I. STA. 122+09.50  
 $\Delta = 12^\circ 17' 59''$  (RT)  
 $D_c = 1^\circ 30' 00''$   
 $R = 3,819.72'$   
 $T = 411.57'$   
 $L = 819.98'$   
 $E = 22.11'$

<b>PRELIMINARY</b>	
REV. BY	DATE
DATE COMPLETED	DESCRIPTION



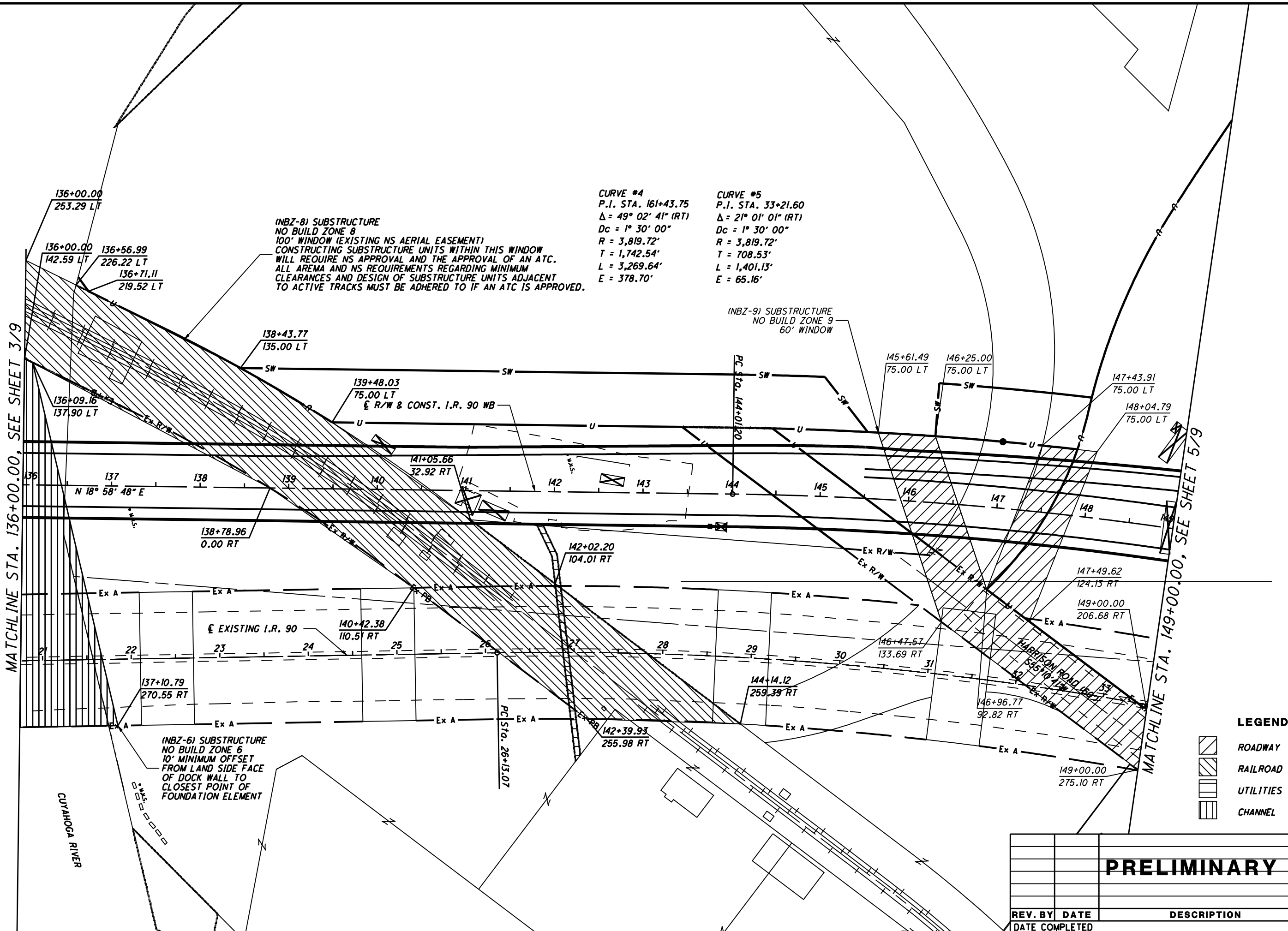
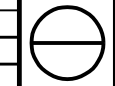
PID NO.  
**77332**

R/W DESIGNER  
**RSW**  
R/W REVIEWER  
**LPC**

**SUBSTRUCTURE "NO-BUILD" ZONES  
STA. 136+00.00 TO STA. 149+00.00**

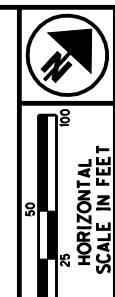
**CUY-90-14.90**

4 / 10



**PRELIMINARY**

REV. BY	DATE	DESCRIPTION



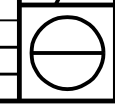
PID NO.  
**77332**

R/W DESIGNER  
RSW  
R/W REVIEWER  
LPC

SUBSTRUCTURE "NO-BUILD" ZONES  
STA. 149+00.00 TO STA. 162+00.00

CUY-90-14.90

5 / 10



(NBZ-12) SUBSTRUCTURE  
NO BUILD ZONE 12  
80' WINDOW (EXISTING CSXT R/W)  
CONSTRUCTING SUBSTRUCTURE UNITS WITHIN THIS WINDOW  
WILL REQUIRE APPROVAL OF AN ATC. ALL AREMA AND CSXT  
REQUIREMENTS REGARDING MINIMUM CLEARANCES AND DESIGN  
OF SUBSTRUCTURE UNITS ADJACENT TO ACTIVE TRACKS MUST  
BE ADHERED TO IF AN ATC IS APPROVED.

SUBSTRUCTURE  
NO BUILD ZONE 15  
SEE DETAIL A,  
SHEET 10/10.

(NBZ-14) SUBSTRUCTURE  
NO BUILD ZONE 14  
30' WINDOW (EXISTING  
CEI HORIZON TUNNEL  
EASEMENT)

SUBSTRUCTURE  
NO BUILD ZONE 11  
70' WINDOW

(NBZ-10) SUBSTRUCTURE  
NO BUILD ZONE 10  
50' WINDOW

CURVE #4  
P.I. STA. 161+43.75  
 $\Delta = 49^\circ 02' 41''$  (RT)  
 $Dc = 1^\circ 30' 00''$   
 $R = 3,819.72'$   
 $T = 1,742.54'$   
 $L = 3,269.64'$   
 $E = 378.70'$

CURVE #5  
P.I. STA. 33+21.60  
 $\Delta = 21^\circ 01' 01''$  (RT)  
 $Dc = 1^\circ 30' 00''$   
 $R = 3,819.72'$   
 $T = 708.53'$   
 $L = 1,401.13'$   
 $E = 65.16'$

CURVE #6  
P.I. STA. 52+70.65  
 $\Delta = 29^\circ 02' 31''$  (RT)  
 $Dc = 2^\circ 00' 00''$   
 $R = 2,864.79'$   
 $T = 742.00'$   
 $L = 1,452.10'$   
 $E = 94.53'$

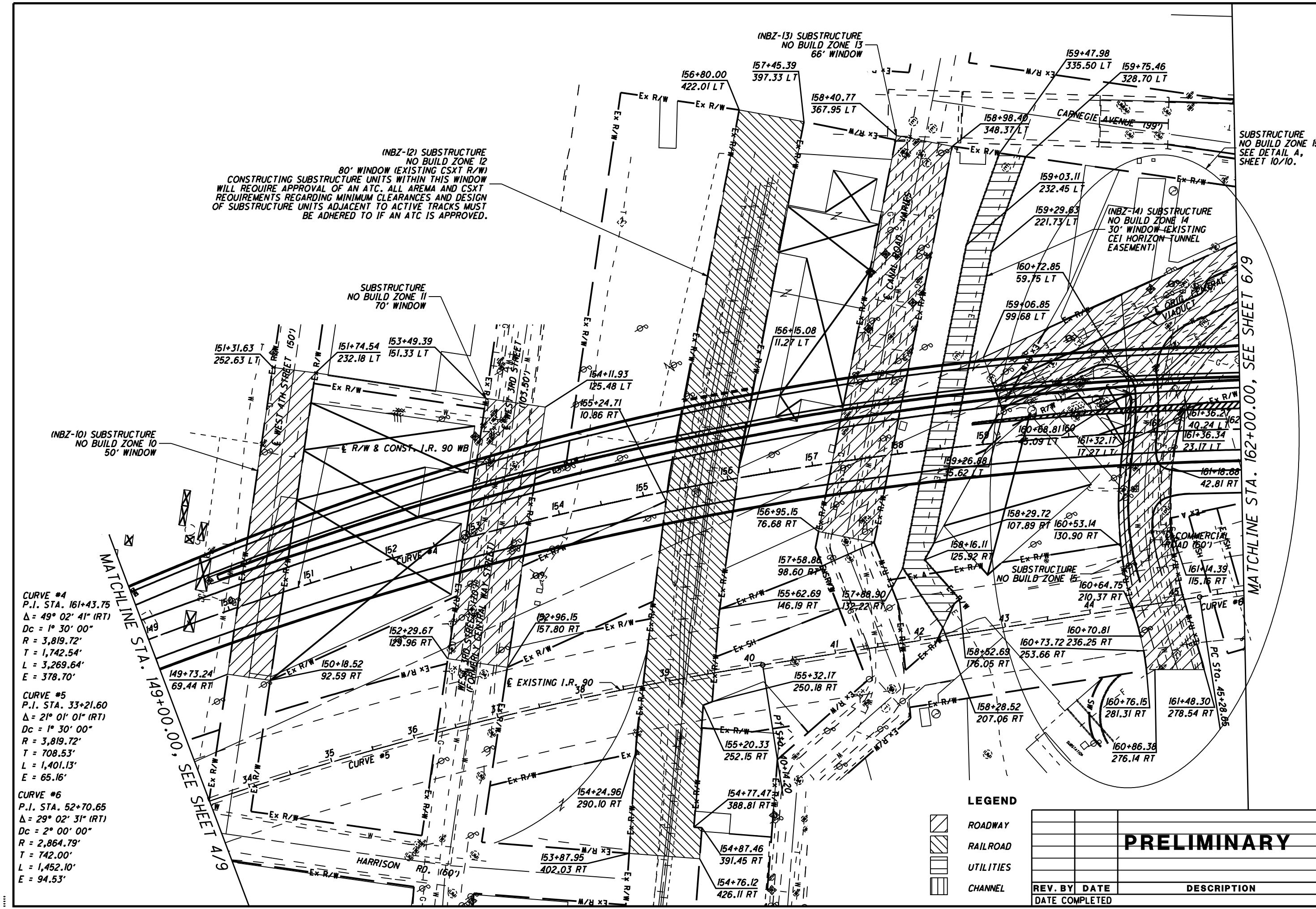
LEGEND

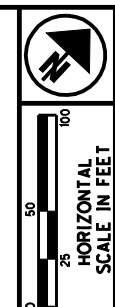
- ROADWAY
- RAILROAD
- UTILITIES
- CHANNEL

<b>PRELIMINARY</b>	
REV. BY	DATE
DATE COMPLETED	DESCRIPTION

MATCHLINE STA. 162+00.00, SEE SHEET 6/9

MATCHLINE STA. 149+00.00, SEE SHEET 4/9





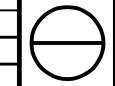
PID NO.  
**77332**

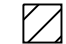

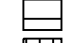

R/W DESIGNER  
**RSW**  
R/W REVIEWER  
**LPC**

**SUBSTRUCTURE "NO-BUILD" ZONES**  
STA. 162+00.00 TO STA. 175+00.00

**CUY-90-14.90**

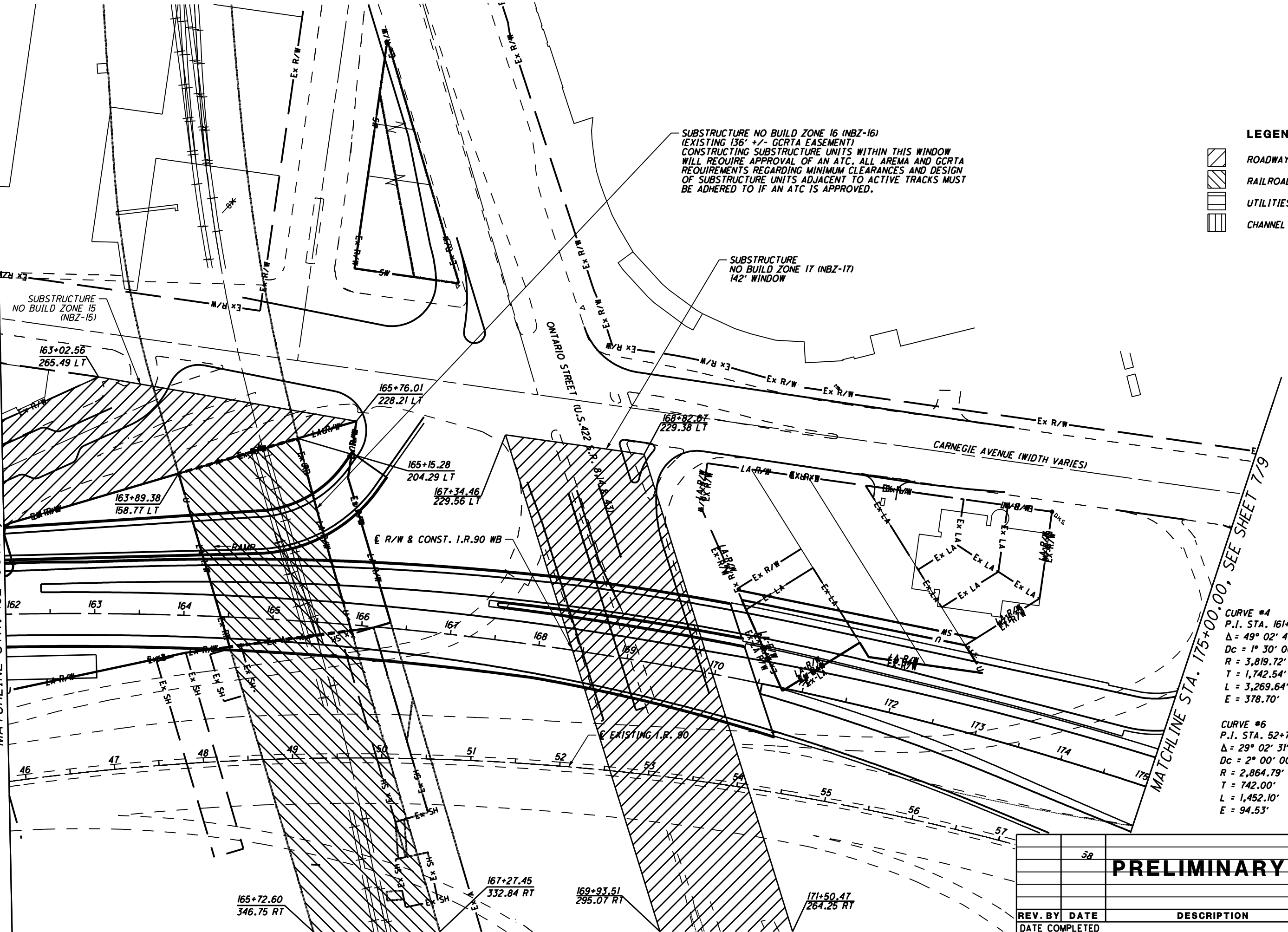
6 / 10



- LEGEND**
-  ROADWAY
  -  RAILROAD
  -  UTILITIES
  -  CHANNEL

SUBSTRUCTURE NO BUILD ZONE 16 (NBZ-16)  
(EXISTING 136' +/- GCRTA EASEMENT)  
CONSTRUCTING SUBSTRUCTURE UNITS WITHIN THIS WINDOW  
WILL REQUIRE APPROVAL OF AN ATC. ALL AREMA AND GCRTA  
REQUIREMENTS REGARDING MINIMUM CLEARANCES AND DESIGN  
OF SUBSTRUCTURE UNITS ADJACENT TO ACTIVE TRACKS MUST  
BE ADHERED TO IF AN ATC IS APPROVED.

SUBSTRUCTURE  
NO BUILD ZONE 17 (NBZ-17)  
142' WINDOW



**CURVE #4**  
P.I. STA. 161+43.75  
 $\Delta = 49^\circ 02' 41" (RT)$   
 $Dc = 1^\circ 30' 00"$   
 $R = 3,819.72'$   
 $T = 1,742.54'$   
 $L = 3,269.64'$   
 $E = 378.70'$

**CURVE #6**  
P.I. STA. 52+70.65  
 $\Delta = 29^\circ 02' 31" (RT)$   
 $Dc = 2^\circ 00' 00"$   
 $R = 2,864.79'$   
 $T = 742.00'$   
 $L = 1,452.10'$   
 $E = 94.53'$

REV. BY	DATE	DESCRIPTION

**PRELIMINARY**



PID NO.  
**77332**

R/W DESIGNER  
**RSW**  
R/W REVIEWER  
**LPC**

**SUBSTRUCTURE "NO-BUILD" ZONES  
STA. 175+00.00 TO STA. 188+00.00**

**CUY-90-14.90**

7 / 10

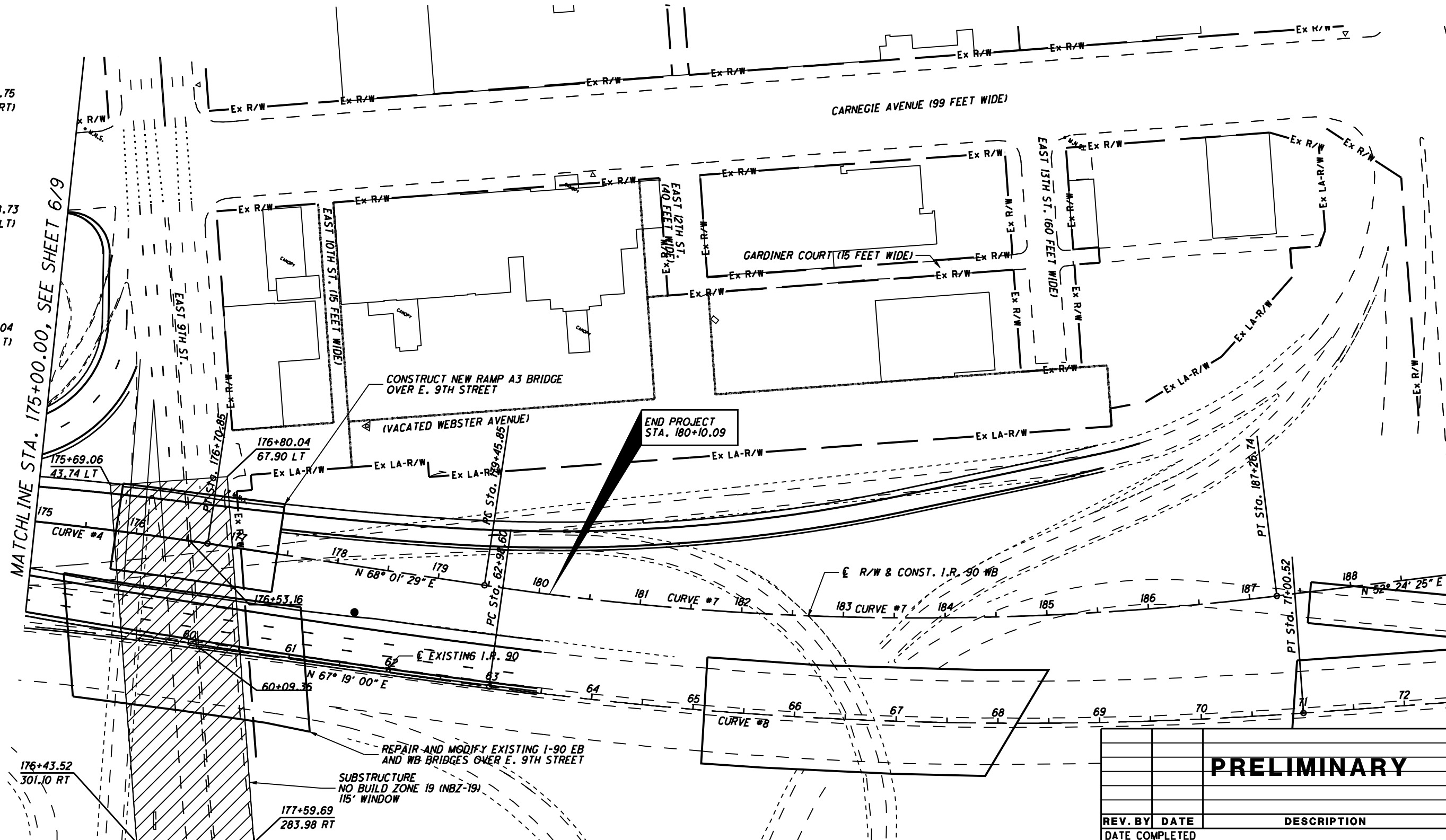


- LEGEND**
- ROADWAY
  - RAILROAD
  - UTILITIES
  - CHANNEL

**CURVE #4**  
P.I. STA. 161+43.75  
 $\Delta = 49^\circ 02' 41''$  (RT)  
 $D_c = 1^\circ 30' 00''$   
 $R = 3,819.72'$   
 $T = 1,742.54'$   
 $L = 3,269.64'$   
 $E = 378.70'$

**CURVE #7**  
P.I. STA. 183+38.73  
 $\Delta = 15^\circ 37' 04''$  (LT)  
 $D_c = 2^\circ 00' 00''$   
 $R = 2,864.79'$   
 $T = 392.88'$   
 $L = 780.89'$   
 $E = 26.81'$

**CURVE #8**  
P.I. STA. 67+01.04  
 $\Delta = 12^\circ 01' 44''$  (LT)  
 $D_c = 1^\circ 30' 00''$   
 $R = 3,819.72'$   
 $T = 402.44'$   
 $L = 801.92'$   
 $E = 21.14'$

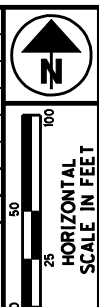


REV. BY		DATE	DESCRIPTION

**PRELIMINARY**



<b>PRELIMINARY</b>	
REV. BY	DATE
DATE COMPLETED	DESCRIPTION



**LEGEND**

	ROADWAY
	RAILROAD
	UTILITIES
	WATER

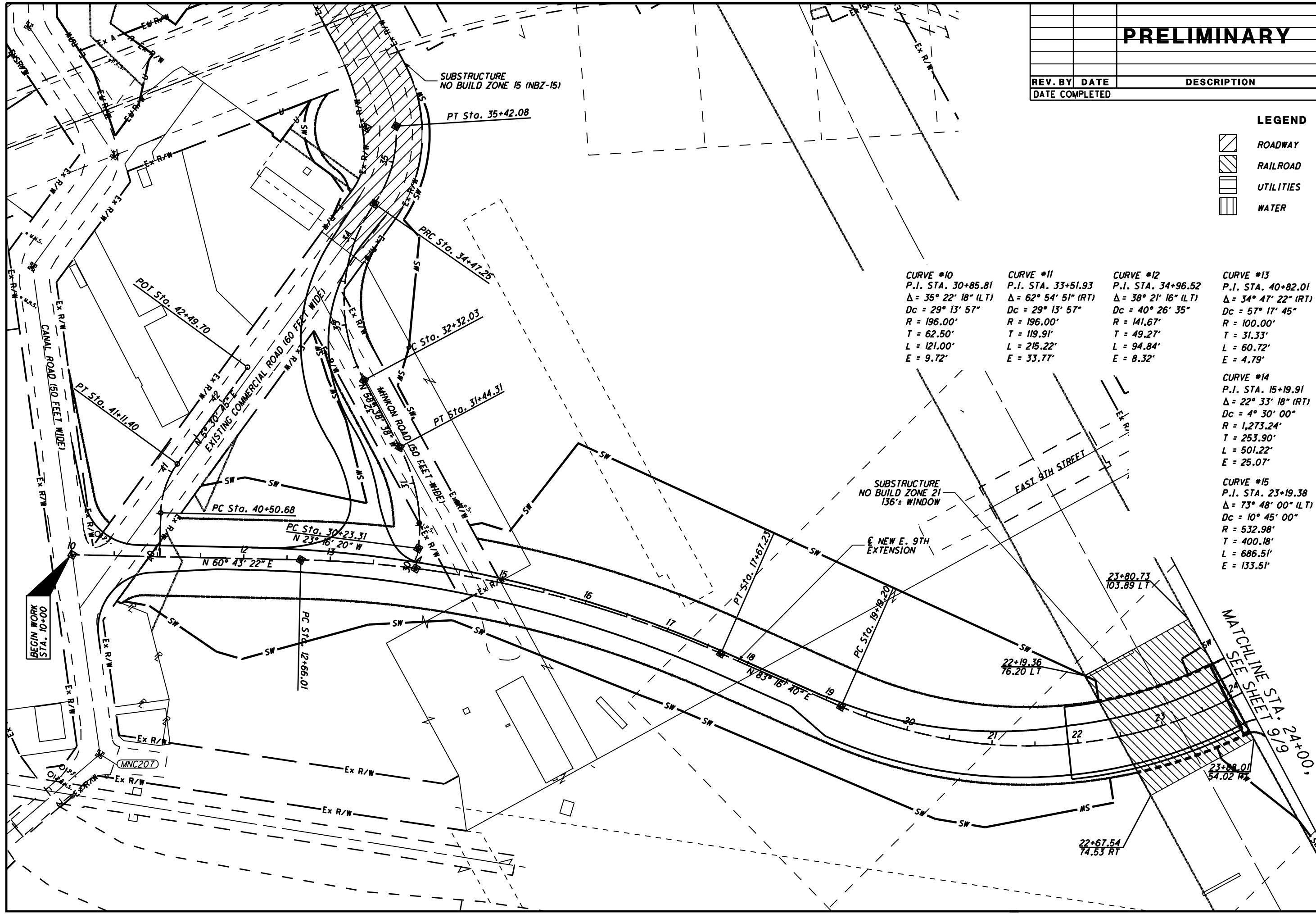
PID NO.  
**77332**

R/W DESIGNER  
RSW

R/W REVIEWER  
LPC

**SUBSTRUCTURE "NO-BUILD" ZONES**

**E. 9TH EXTENSION**



<b>CURVE #10</b> P.I. STA. 30+85.81 $\Delta = 35^\circ 22' 18''$ (LT) Dc = 29° 13' 57" R = 196.00' T = 62.50' L = 121.00' E = 9.72'	<b>CURVE #11</b> P.I. STA. 33+51.93 $\Delta = 62^\circ 54' 51''$ (RT) Dc = 29° 13' 57" R = 196.00' T = 119.91' L = 215.22' E = 33.77'	<b>CURVE #12</b> P.I. STA. 34+96.52 $\Delta = 38^\circ 21' 16''$ (LT) Dc = 40° 26' 35" R = 141.67' T = 49.27' L = 94.84' E = 8.32'	<b>CURVE #13</b> P.I. STA. 40+82.01 $\Delta = 34^\circ 47' 22''$ (RT) Dc = 57° 17' 45" R = 100.00' T = 31.33' L = 60.72' E = 4.79'
--	--	---	---

<b>CURVE #14</b> P.I. STA. 15+19.91 $\Delta = 22^\circ 33' 18''$ (RT) Dc = 4° 30' 00" R = 1,273.24' T = 253.90' L = 501.22' E = 25.07'	<b>CURVE #15</b> P.I. STA. 23+19.38 $\Delta = 73^\circ 48' 00''$ (LT) Dc = 10° 45' 00" R = 532.98' T = 400.18' L = 686.51' E = 133.51'
---	---

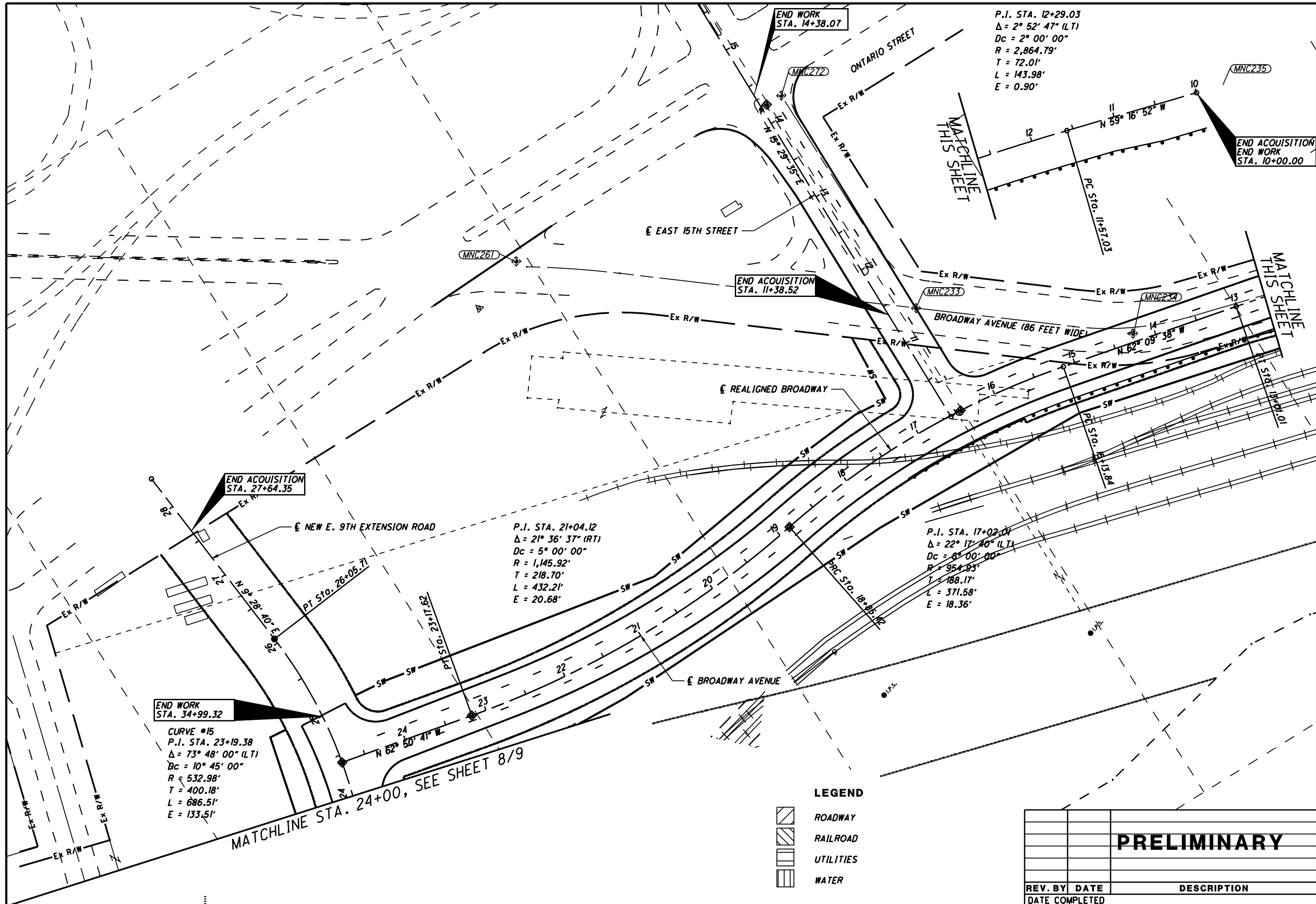
23+80.73  
103.89 LT

22+19.36  
76.20 LT

22+67.54  
74.53 RT

23+88.01  
54.02 RT





P.I. STA. 12+29.03  
 $\Delta = 2^\circ 52' 47''$  (LT)  
 $Dc = 2^\circ 00' 00''$   
 $R = 2,864.79'$   
 $T = 72.01'$   
 $L = 143.98'$   
 $E = 0.90'$

END ACQUISITION  
 END WORK  
 STA. 10+00.00

END ACQUISITION  
 STA. 11+38.52

END WORK  
 STA. 14+38.07

END ACQUISITION  
 STA. 27+64.35

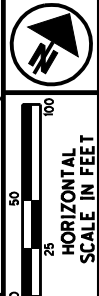
P.I. STA. 21+04.12  
 $\Delta = 21^\circ 36' 37''$  (RT)  
 $Dc = 5^\circ 00' 00''$   
 $R = 1,145.92'$   
 $T = 218.70'$   
 $L = 432.21'$   
 $E = 20.68'$

P.I. STA. 17+02.04  
 $\Delta = 22^\circ 17' 40''$  (LT)  
 $Dc = 6^\circ 00' 00''$   
 $R = 954.95'$   
 $T = 188.17'$   
 $L = 371.58'$   
 $E = 18.36'$

END WORK  
 STA. 34+99.32

CURVE #15  
 P.I. STA. 23+19.38  
 $\Delta = 73^\circ 48' 00''$  (LT)  
 $Dc = 10^\circ 45' 00''$   
 $R = 532.98'$   
 $T = 400.18'$   
 $L = 686.51'$   
 $E = 133.51'$

MATCHLINE STA. 24+00, SEE SHEET 8/9



PID NO.  
**77332**

R/W DESIGNER  
 RSW  
 R/W REVIEWER  
 LPC

SUBSTRUCTURE "NO-BUILD" ZONES  
 E. 9TH EXTENSION

CUY-90-14.90

9 / 10



**LEGEND**

- ROADWAY
- RAILROAD
- UTILITIES
- WATER

PRELIMINARY	
REV. BY	DATE
DATE COMPLETED	DESCRIPTION



PID NO.  
**77332**

R/W DESIGNER  
**RSW**  
R/W REVIEWER  
**LPC**

**SUBSTRUCTURE "NO-BUILD" ZONES  
DETAIL A**

**CUY-90-14.90**

10 / 10



159+03.11  
232.45 LT

159+29.63  
221.73 LT

(NBZ-14) SUBSTRUCTURE  
NO BUILD ZONE 14  
30' WINDOW (EXISTING  
CEI HORIZON TUNNEL  
EASEMENT)

159+06.85  
99.68 LT

159+76.88  
35.62 LT  
159

158+29.72  
107.89 RT

158+16.11  
125.92 RT

157+88.90  
132.22 RT

SUBSTRUCTURE  
NO BUILD ZONE 15

160+53.14  
130.90 RT

160+72.85  
59.75 LT  
160

160+68.81  
45.09 LT

161+36.27  
40.24 LT

161+36.34  
23.17 LT

161+32.17  
17.27 LT

161+18.68  
42.81 RT

161+95.85  
105.58 LT

RAMP A5  
(ONTARIO ST. TO I-90 WB)



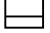

138 KV ELECTRIC LINES  
(TO REMAIN UNDISTURBED)

10' MIN. CLEARANCE

€ I-90 WB

€ COMMERCIAL  
ROAD (60')

**LEGEND**

-  ROADWAY
-  RAILROAD
-  UTILITIES
-  CHANNEL

<b>PRELIMINARY</b>				
		REV. BY	DATE	DESCRIPTION

