



CUY-90-14.90

PID 77332/85531

APPENDIX LD-11


**I-90 SLM Diagram
(Reference Document)**

State of Ohio
Department of Transportation
Jolene M. Molitoris, Director

**Innerbelt Bridge
Construction Contract Group 1 (CCG1)**

STATE OF OHIO - DEPARTMENT OF TRANSPORTATION
STATE ROUTE SECTIONS ON CONTINUOUS MILEAGE STATIONING

DISTRICT 12
COUNTY CUYAHOGA
ROUTE IR 90

STATE LOG MILES	155.92	156	157	158	159	160	5	
COUNTY LOG MILES	0.00							
VISIBLE FIXED POINTS DIRECTION OF SURVEY 	LORAIN CUYAHOGA Westlake CO 0.00 Corp	Rd. 0.45 Bradley	Rd. 0.95 Bossett	FOR DETAIL SEE REVERSE SIDE Rd. 2.01 Coburn	Center Rd. 2.49 Dover	Rd. 3.03 Conterbury	FOR DE- TAIL SEE REVERSE SIDE SR 252 + 3.82 4.58 4.55 Clague Rd.	FOR DETAIL SEE REVERSE SIDE Rd. 4.95 North Spur Rd Southern
	STREET NAME Northwest Freeway							
SECTION IDENTIFICATION	0.00		3.82			4.55		
SECTION LENGTH	3.82		0.73			0.50		
SURFACE TYPE & WIDTH	G36' Δ G36'		G36' Δ G36'			G36' Δ G36'		
BASE TYPE & WIDTH	P24', L12' Δ L12', P24'		P24', L12' Δ L12', P24'			P36' Δ P36'		
YEAR	2000		2000			2005		
PROJECT NUMBER	558		558			6		

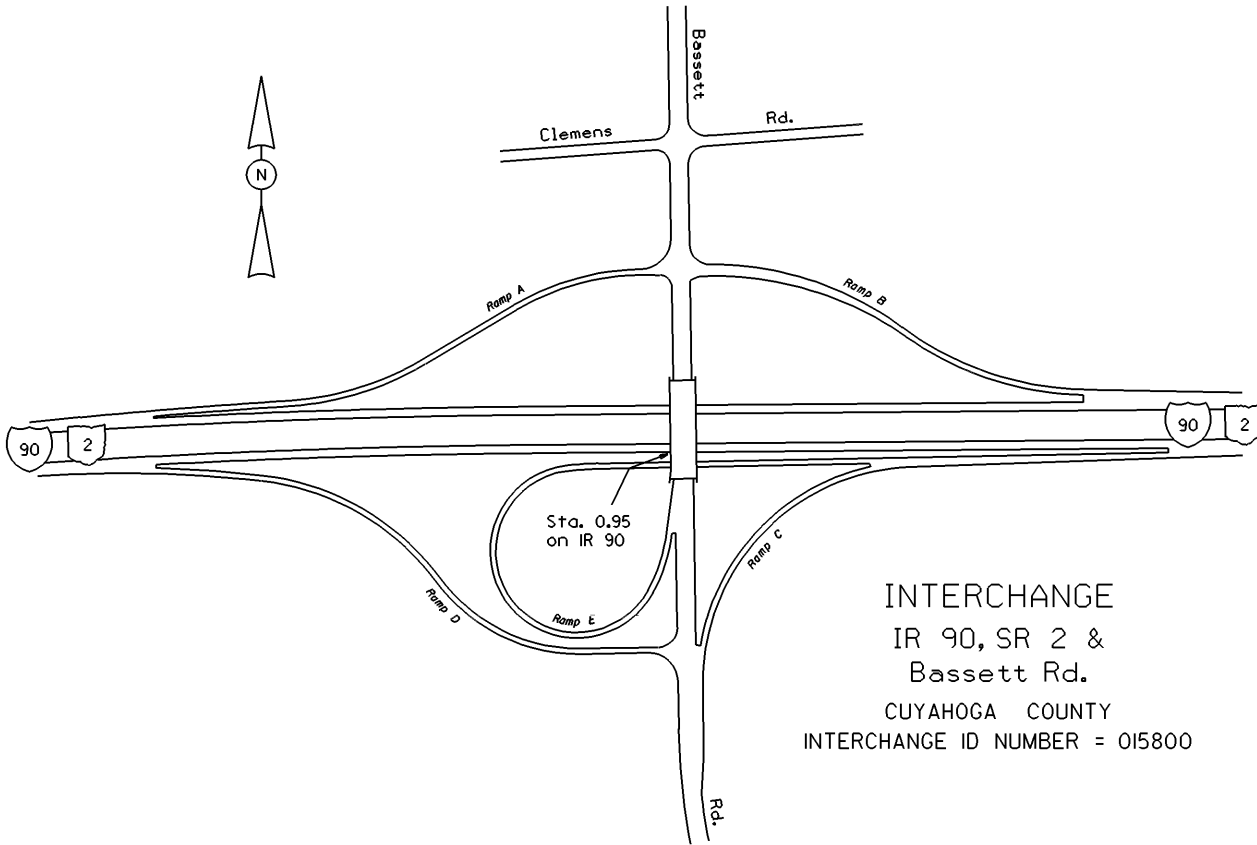
PERPETUATION

VISIBLE
FIXED
POINTS

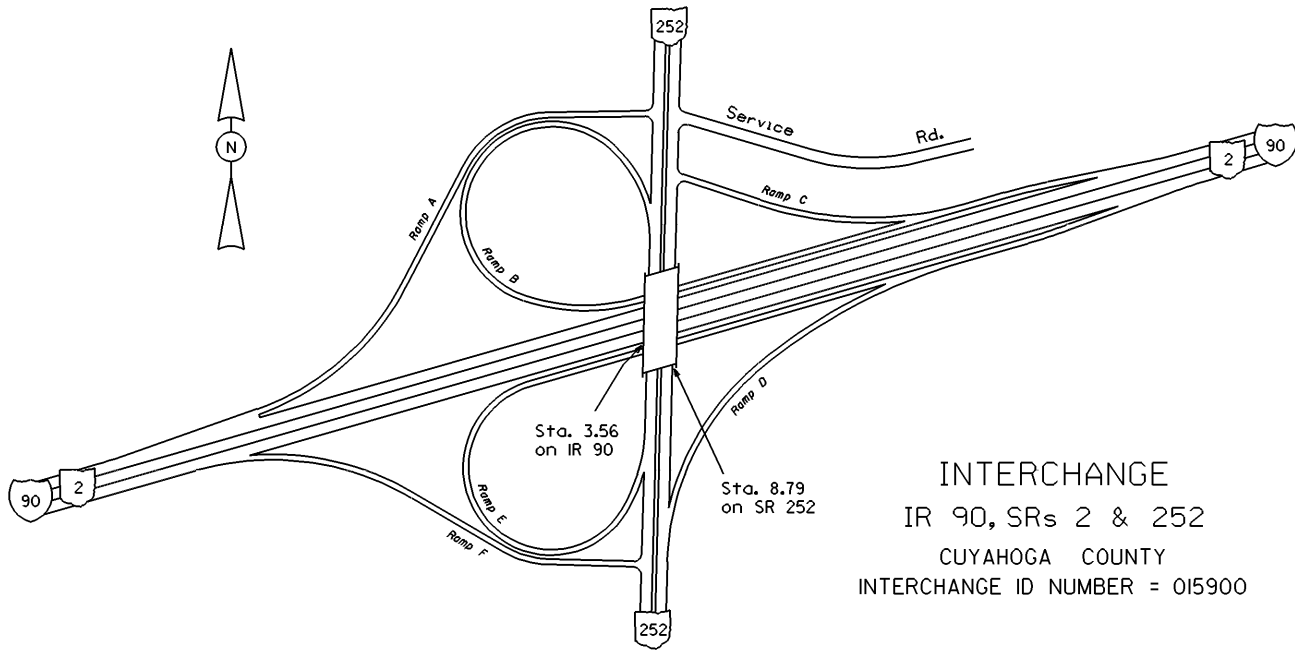
STREET NAME	
SECTION IDENTIFICATION	
SECTION LENGTH	
SURFACE TYPE & WIDTH	
BASE TYPE & WIDTH	
YEAR	
PROJECT NUMBER	

VISIBLE
FIXED
POINTS

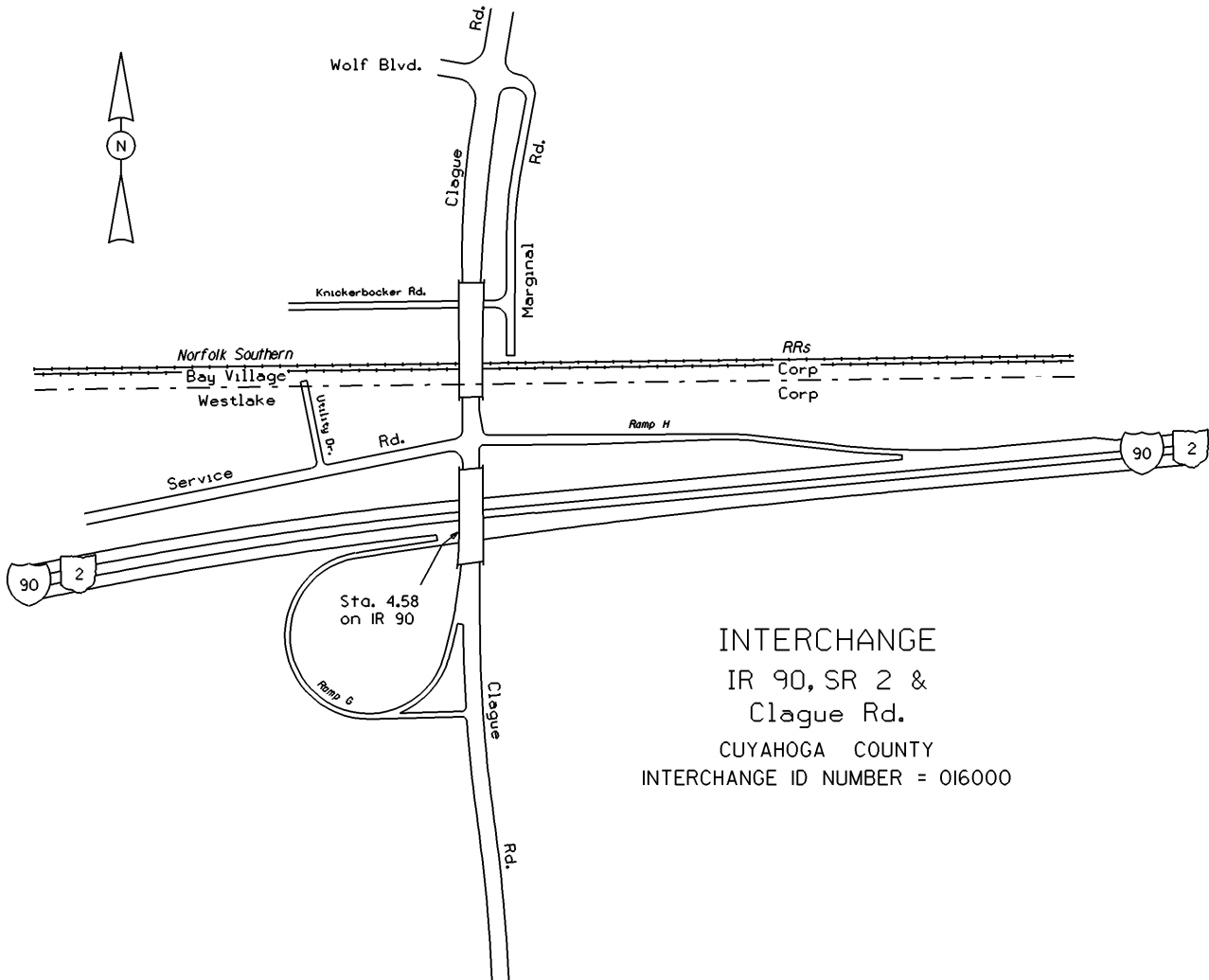
STREET NAME	
SECTION IDENTIFICATION	
SECTION LENGTH	
SURFACE TYPE & WIDTH	
BASE TYPE & WIDTH	
YEAR	
PROJECT NUMBER	



INTERCHANGE
IR 90, SR 2 &
Bassett Rd.
CUYAHOGA COUNTY
INTERCHANGE ID NUMBER = 015800



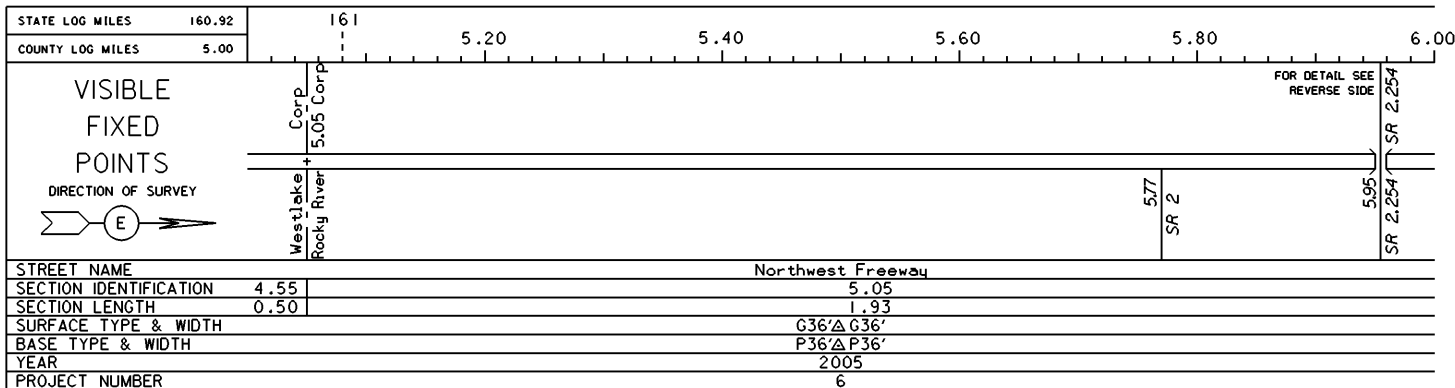
INTERCHANGE
 IR 90, SRs 2 & 252
 CUYAHOGA COUNTY
 INTERCHANGE ID NUMBER = 015900



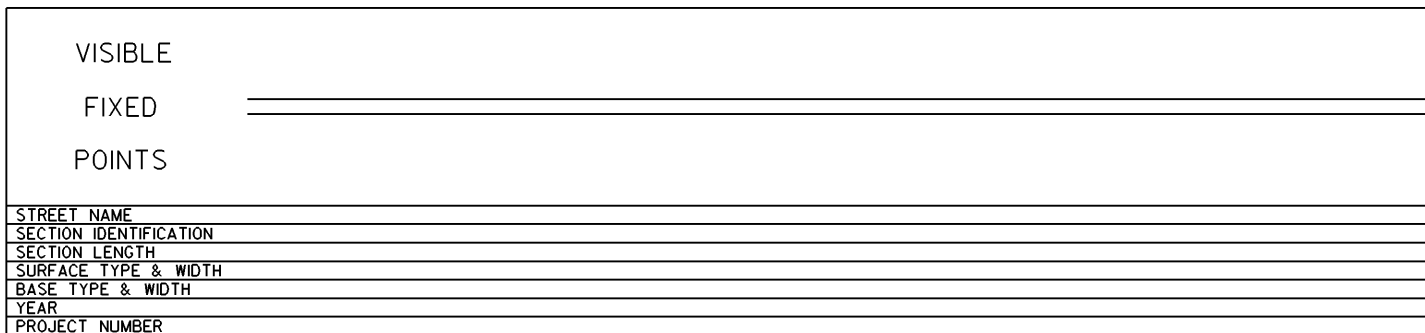
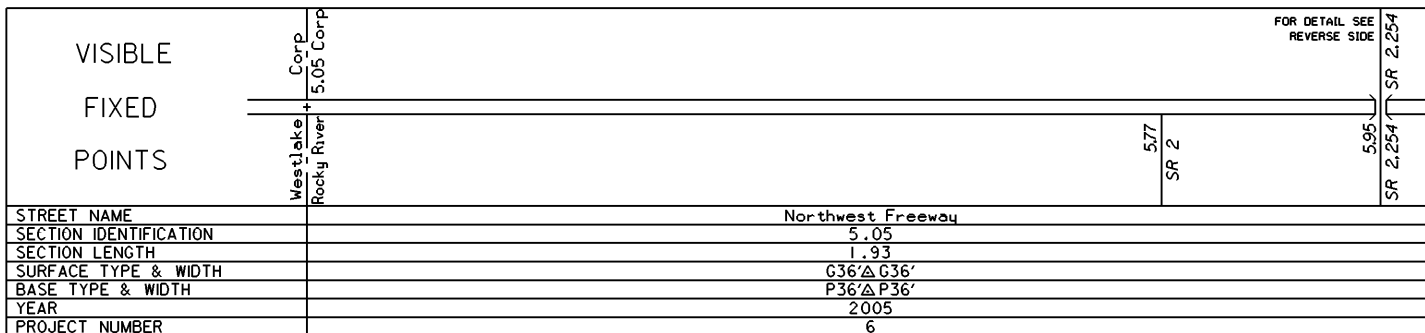
INTERCHANGE
 IR 90, SR 2 &
 Clague Rd.
 CUYAHOGA COUNTY
 INTERCHANGE ID NUMBER = 016000

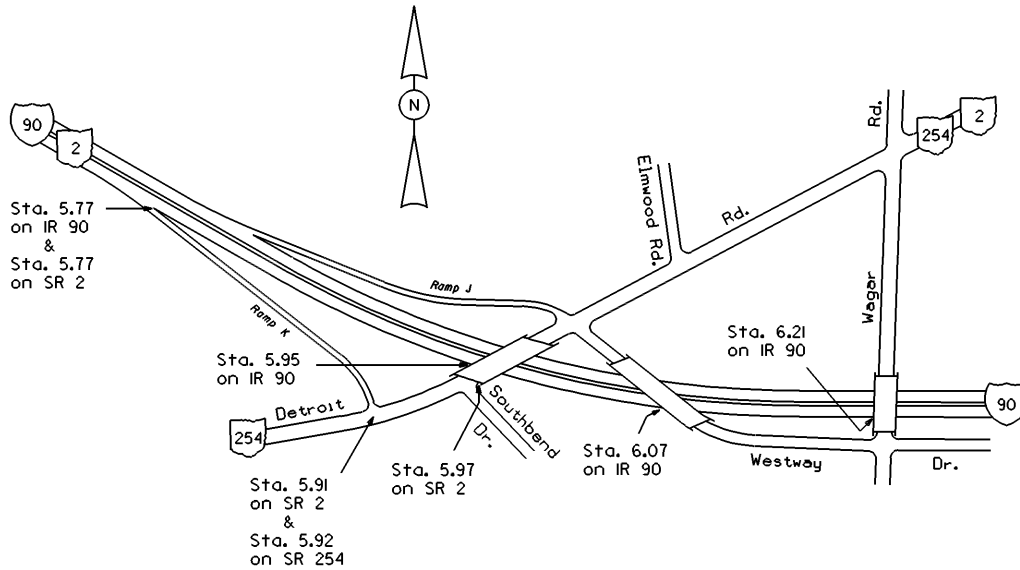
STATE OF OHIO - DEPARTMENT OF TRANSPORTATION
STATE ROUTE SECTIONS ON CONTINUOUS MILEAGE STATIONING

DISTRICT 12
COUNTY CUYAHOGA
ROUTE IR 90



PERPETUATION



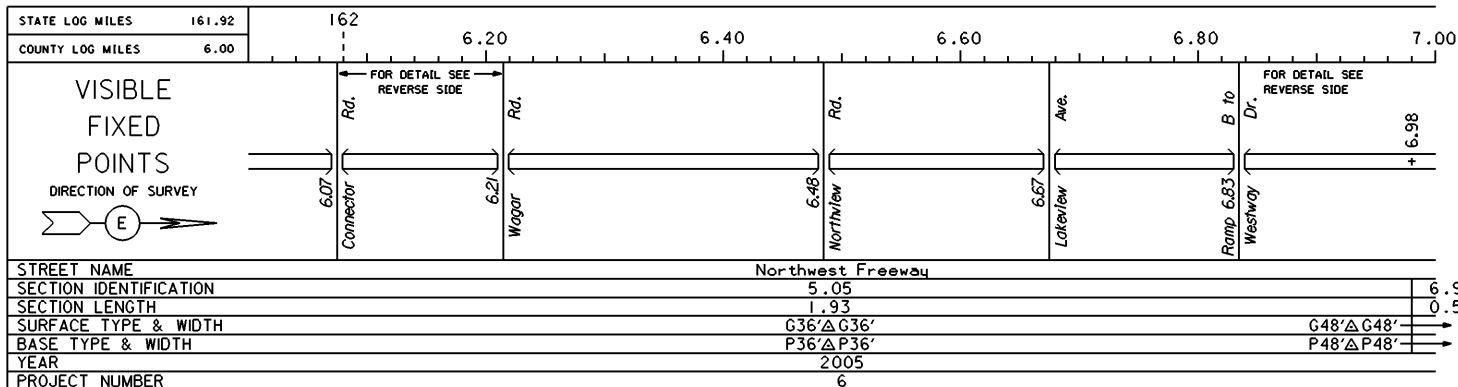


INTERCHANGE
 IR 90, SR 2 & SR 254
 CUYAHOGA COUNTY
 INTERCHANGE ID NUMBER = 016100

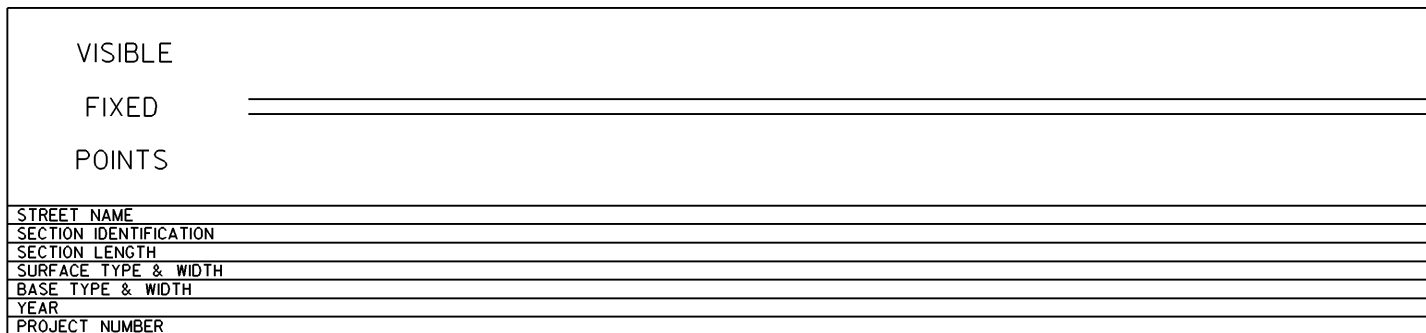
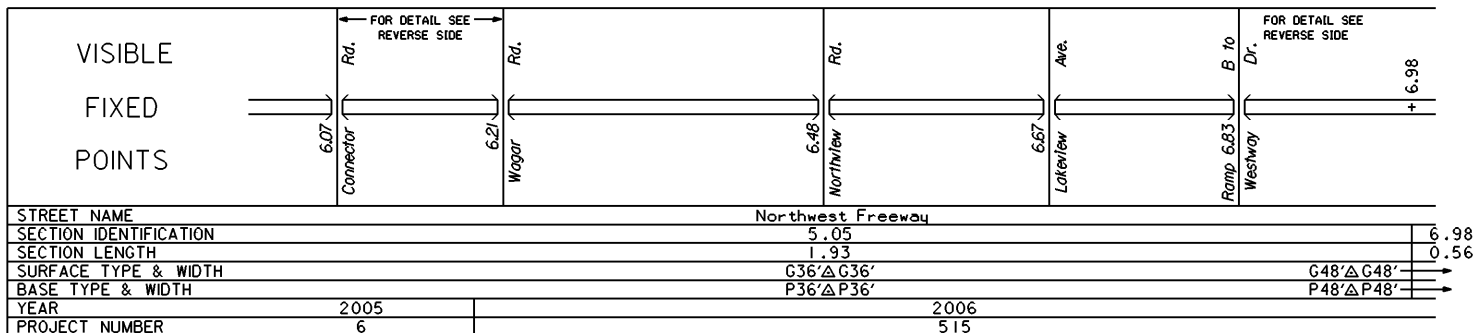
IR 90	SHEET	2	OF	21
IR 90	SHEET	3	OF	21
SR 2	SHEET	2	OF	6

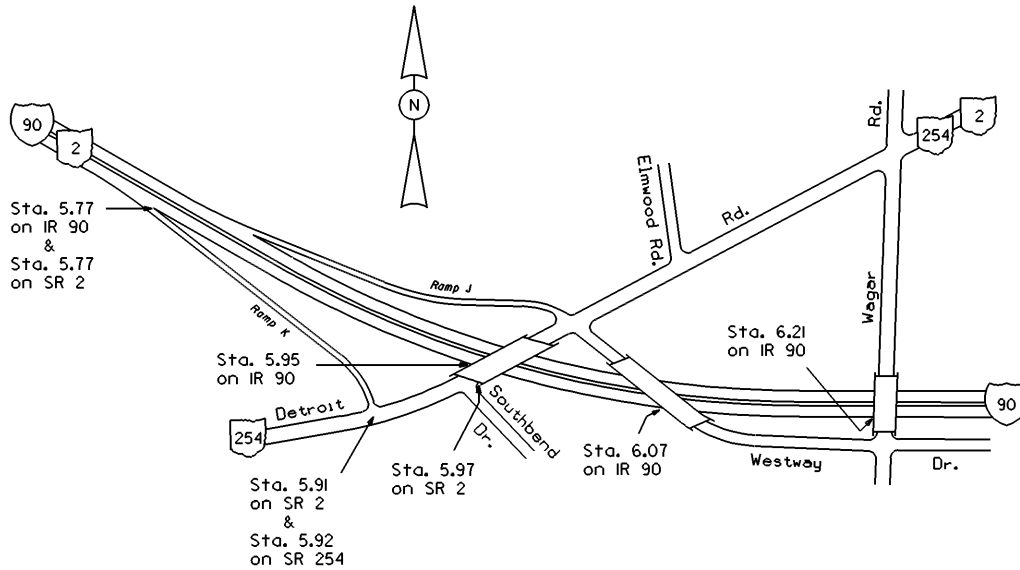
STATE OF OHIO - DEPARTMENT OF TRANSPORTATION
STATE ROUTE SECTIONS ON CONTINUOUS MILEAGE STATIONING

DISTRICT 12
COUNTY CUYAHOGA
ROUTE IR 90



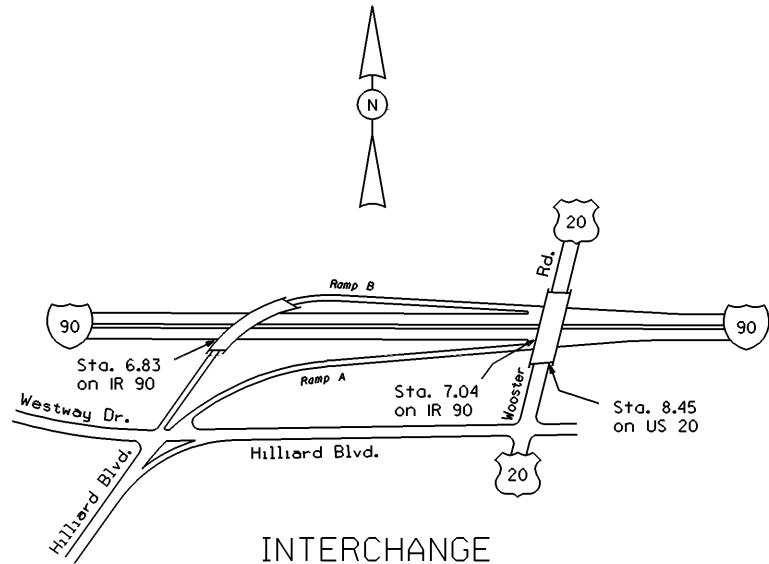
PERPETUATION





INTERCHANGE
 IR 90, SR 2 & SR 254
 CUYAHOGA COUNTY
 INTERCHANGE ID NUMBER = 016100

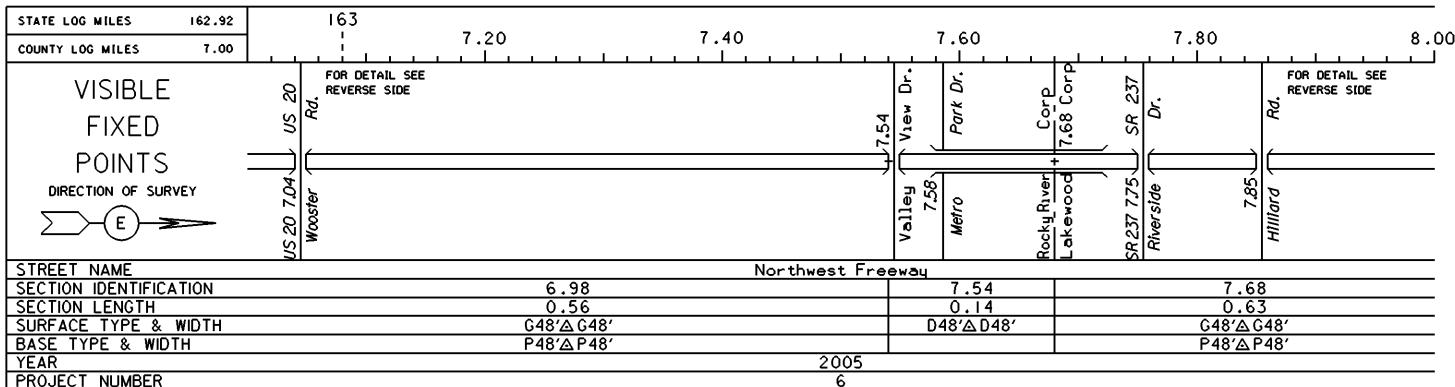
IR 90	SHEET	2	OF	21
IR 90	SHEET	3	OF	21
SR 2	SHEET	2	OF	6



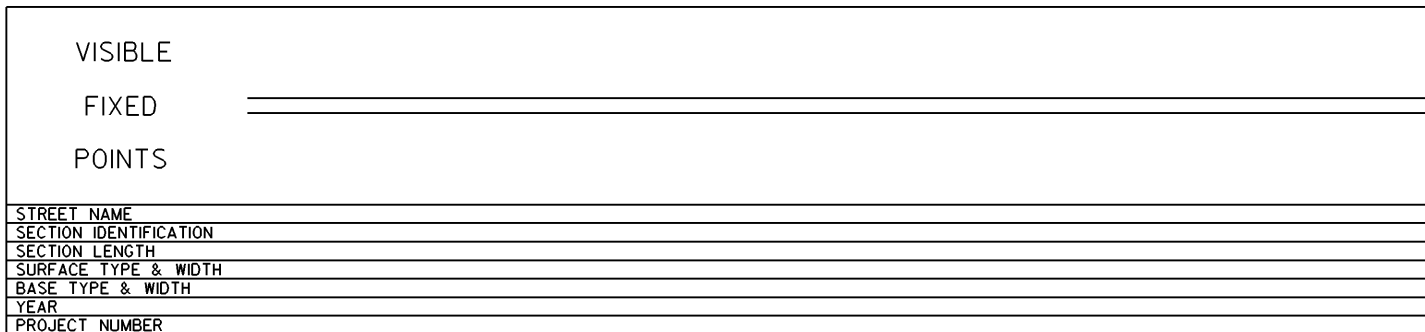
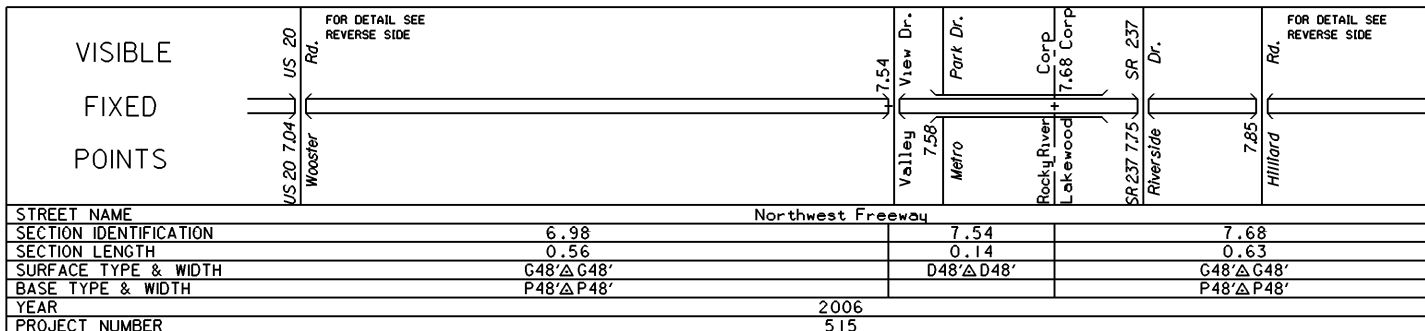
INTERCHANGE
 IR 90, US 20 & Hilliard Blvd.
 CUYAHOGA COUNTY
 INTERCHANGE ID NUMBER = 016200

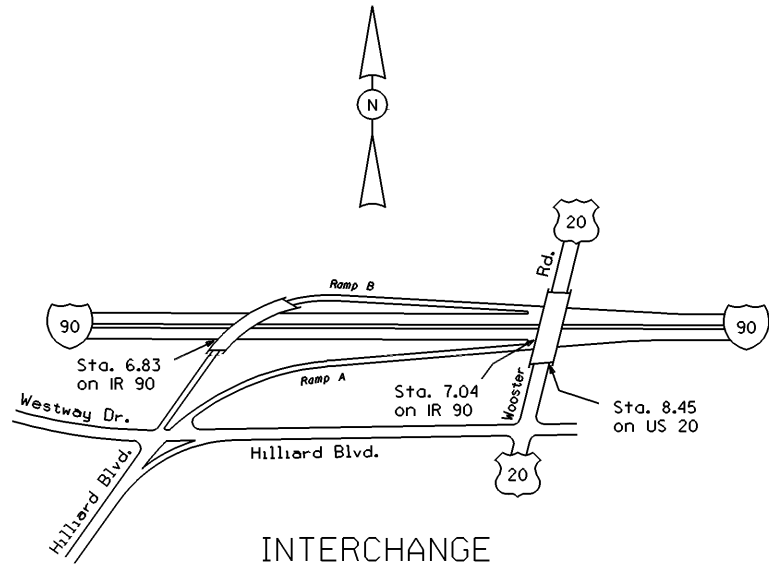
STATE OF OHIO - DEPARTMENT OF TRANSPORTATION
STATE ROUTE SECTIONS ON CONTINUOUS MILEAGE STATIONING

DISTRICT 12
COUNTY CUYAHOGA
ROUTE IR 90

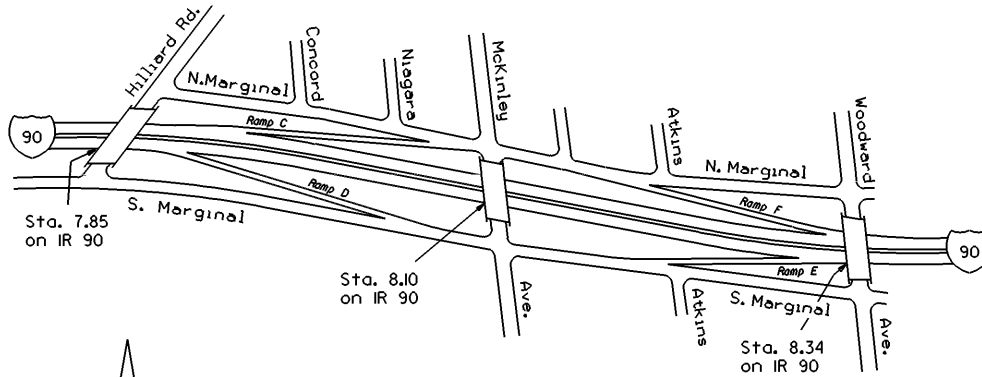


PERPETUATION





INTERCHANGE
 IR 90, US 20 & Hilliard Blvd.
 CUYAHOGA COUNTY
 INTERCHANGE ID NUMBER = 016200



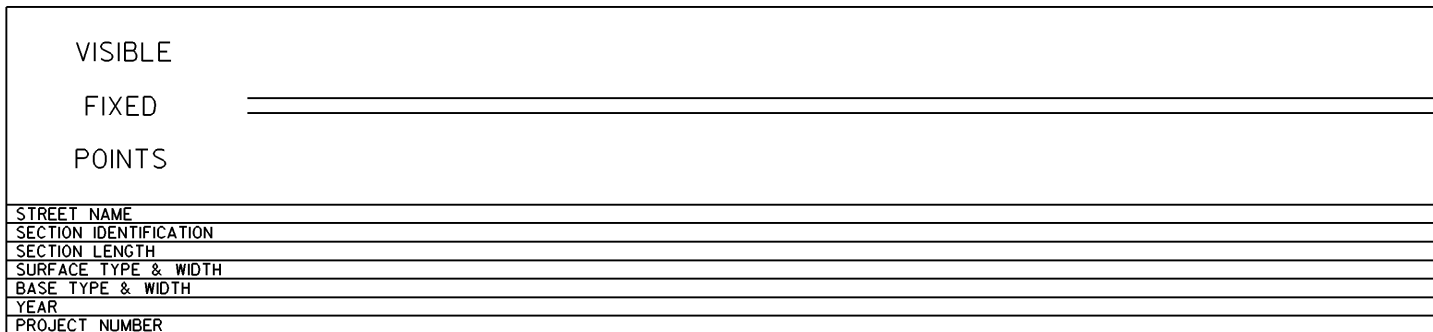
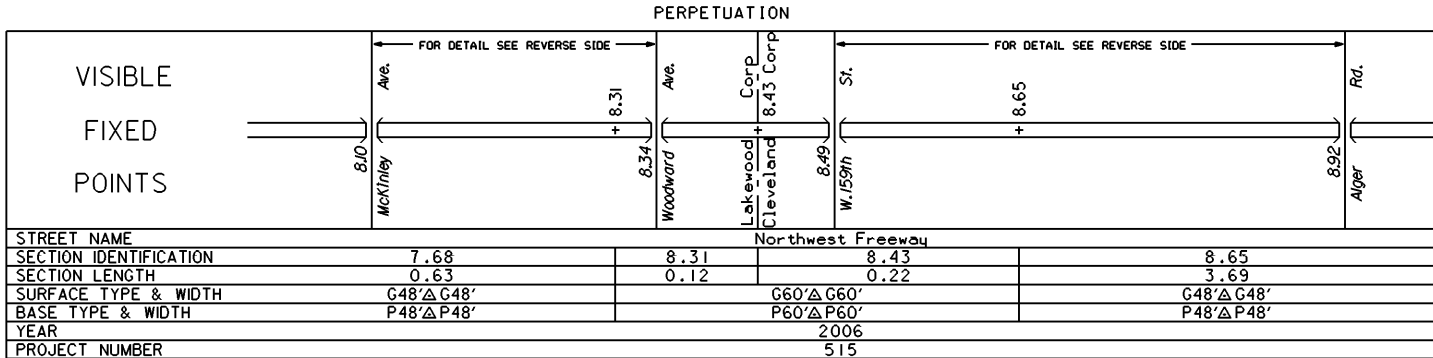
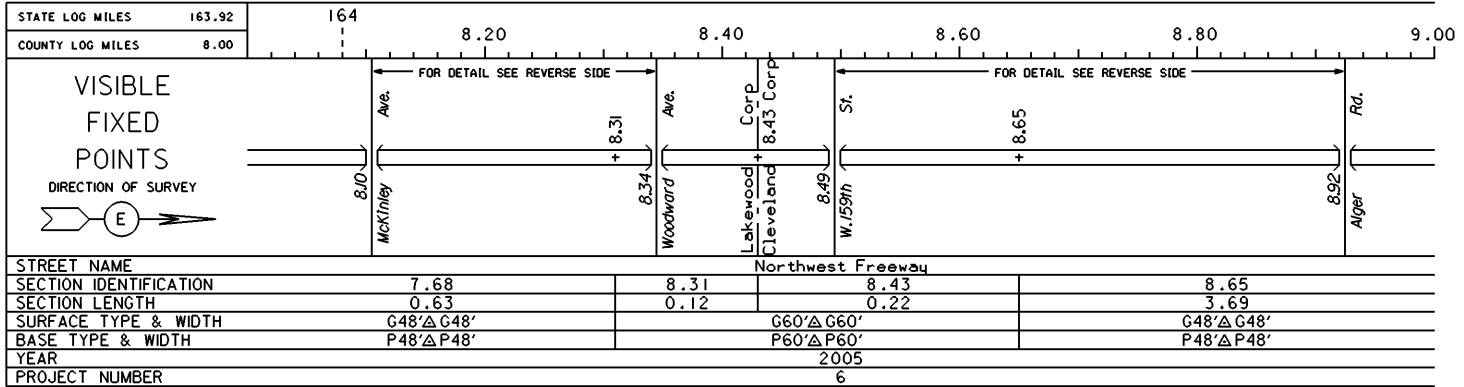
INTERCHANGE
 IR 90 & McKinley Ave.
 CUYAHOGA COUNTY
 INTERCHANGE ID NUMBER = 016300

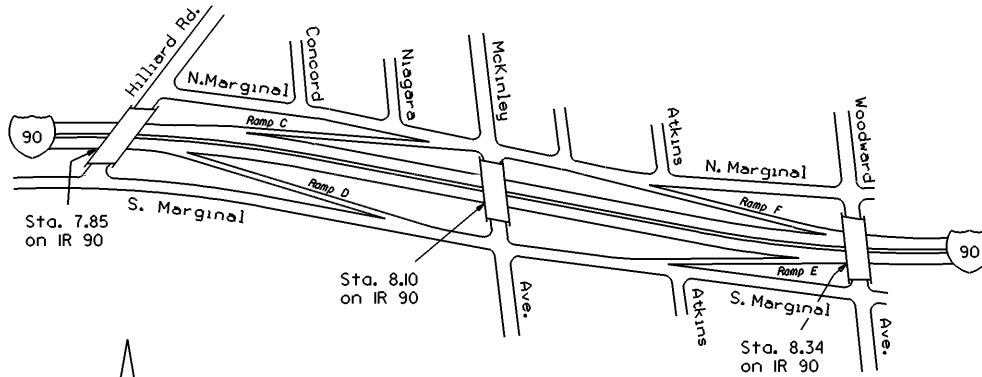


STATE OF OHIO - DEPARTMENT OF TRANSPORTATION

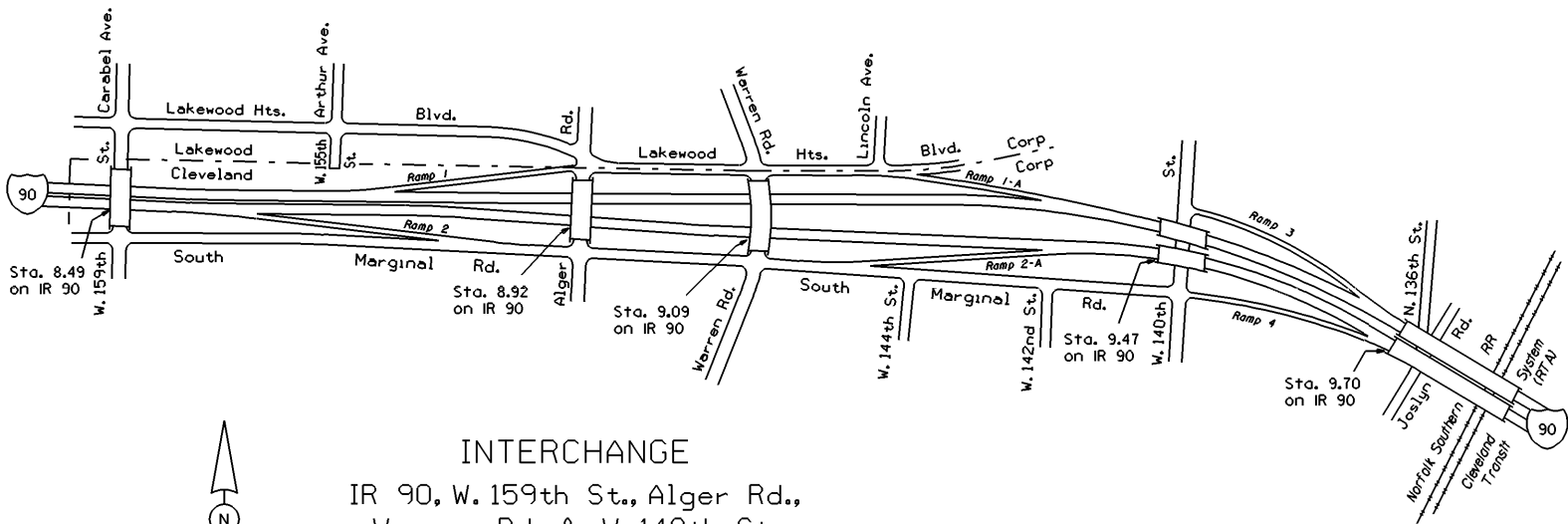
STATE ROUTE SECTIONS ON CONTINUOUS MILEAGE STATIONING

DISTRICT 12
 COUNTY CUYAHOGA
 ROUTE IR 90





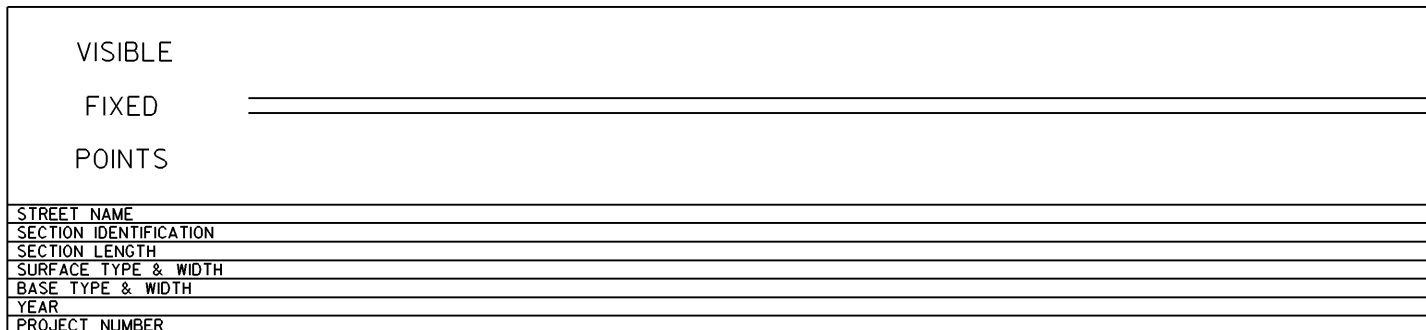
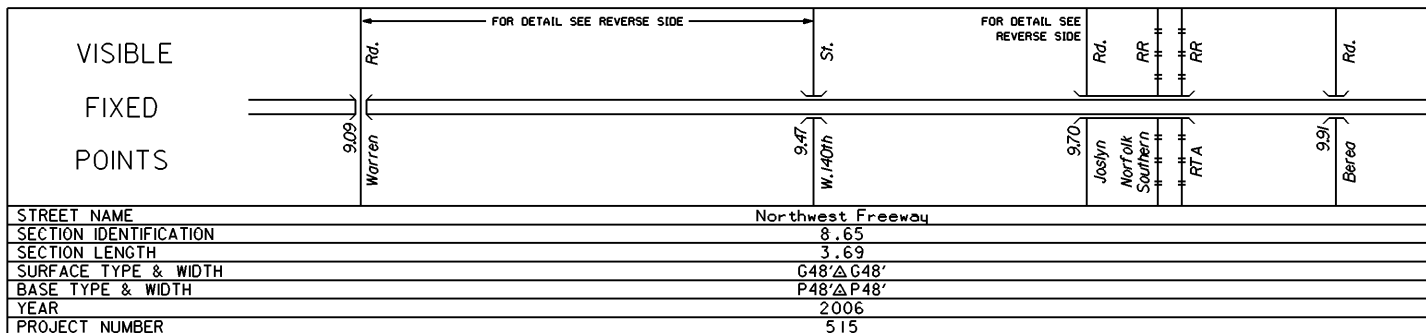
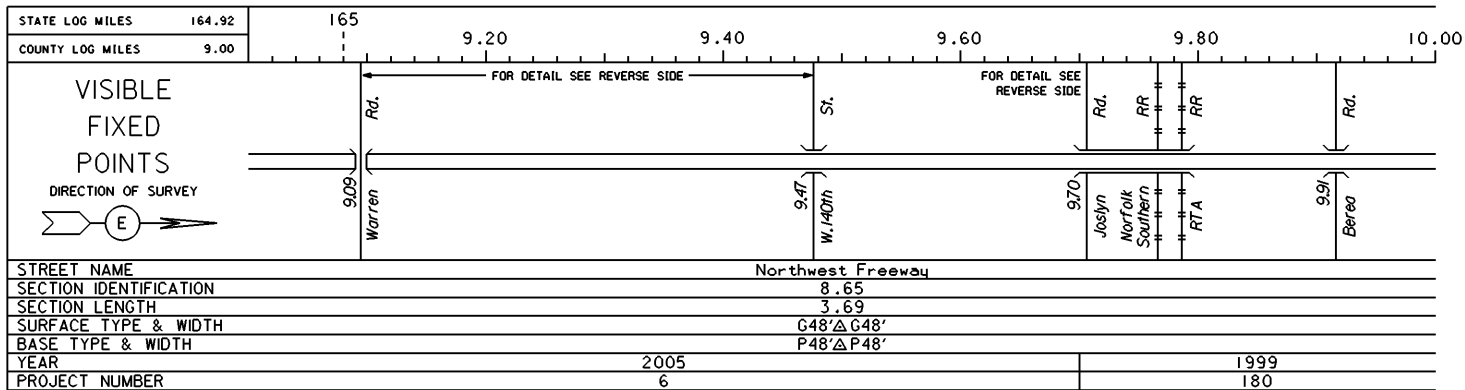
INTERCHANGE
 IR 90 & McKinley Ave.
 CUYAHOGA COUNTY
 INTERCHANGE ID NUMBER = 016300

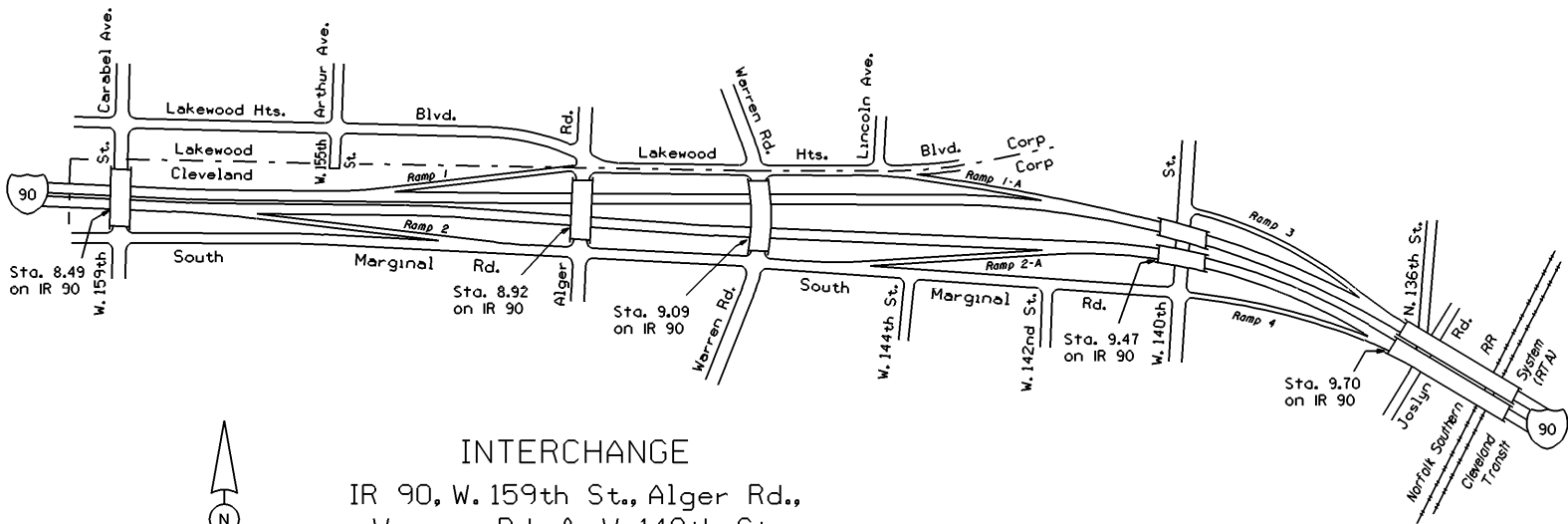


INTERCHANGE
 IR 90, W. 159th St., Alger Rd.,
 Warren Rd. & W. 140th St.
 CUYAHOGA COUNTY
 INTERCHANGE ID NUMBER = 016400

STATE OF OHIO - DEPARTMENT OF TRANSPORTATION
STATE ROUTE SECTIONS ON CONTINUOUS MILEAGE STATIONING

DISTRICT 12
COUNTY CUYAHOGA
ROUTE IR 90

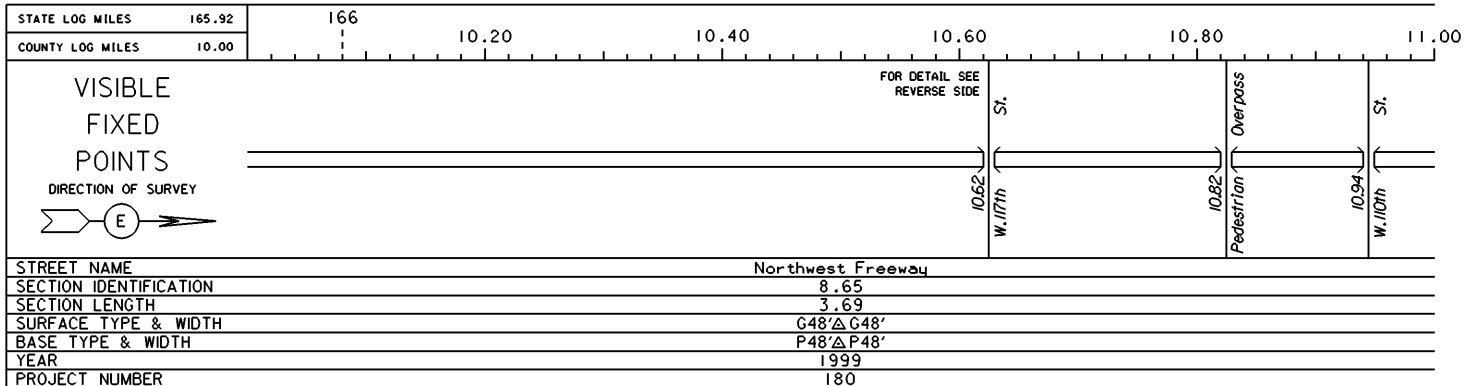




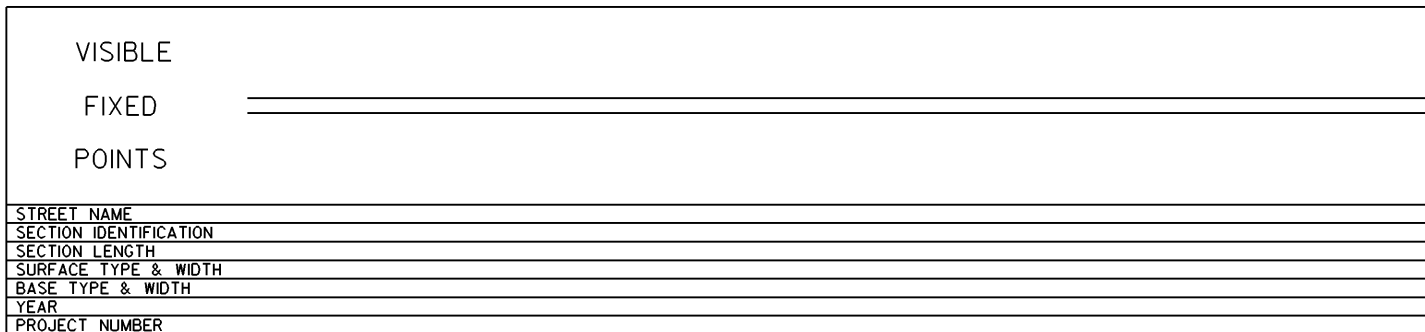
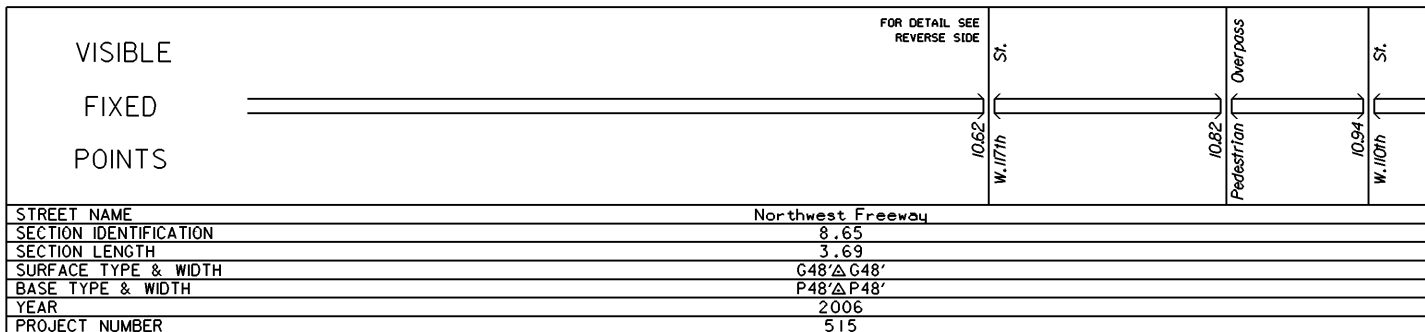
INTERCHANGE
 IR 90, W. 159th St., Alger Rd.,
 Warren Rd. & W. 140th St.
 CUYAHOGA COUNTY
 INTERCHANGE ID NUMBER = 016400

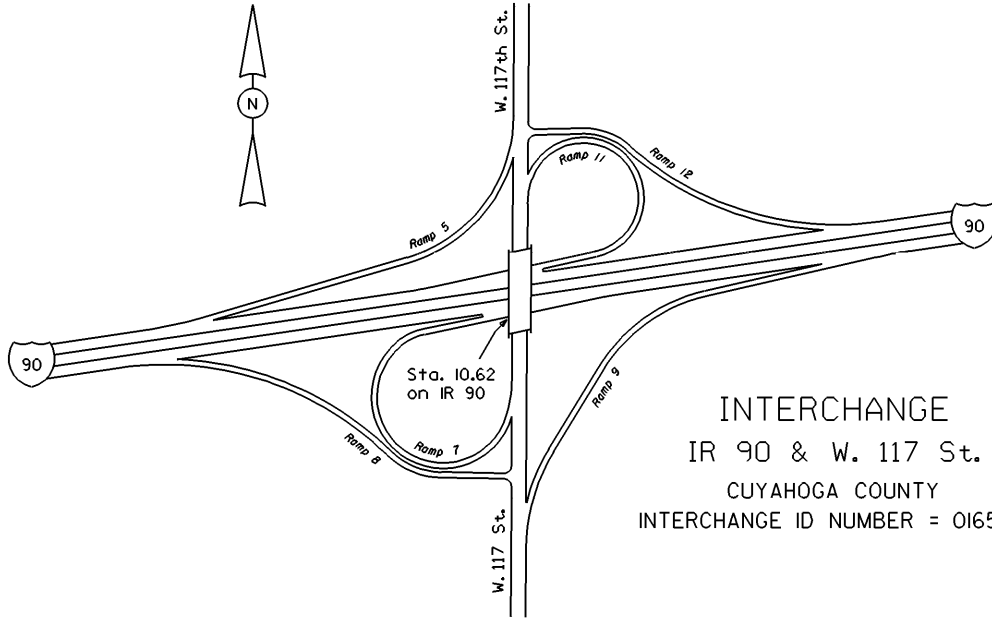
STATE OF OHIO - DEPARTMENT OF TRANSPORTATION
STATE ROUTE SECTIONS ON CONTINUOUS MILEAGE STATIONING

DISTRICT 12
COUNTY CUYAHOGA
ROUTE IR 90



PERPETUATION



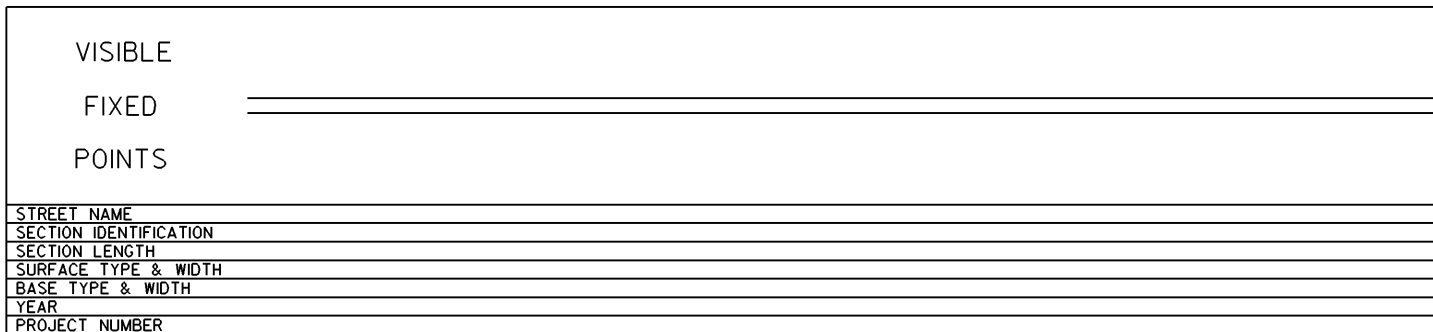
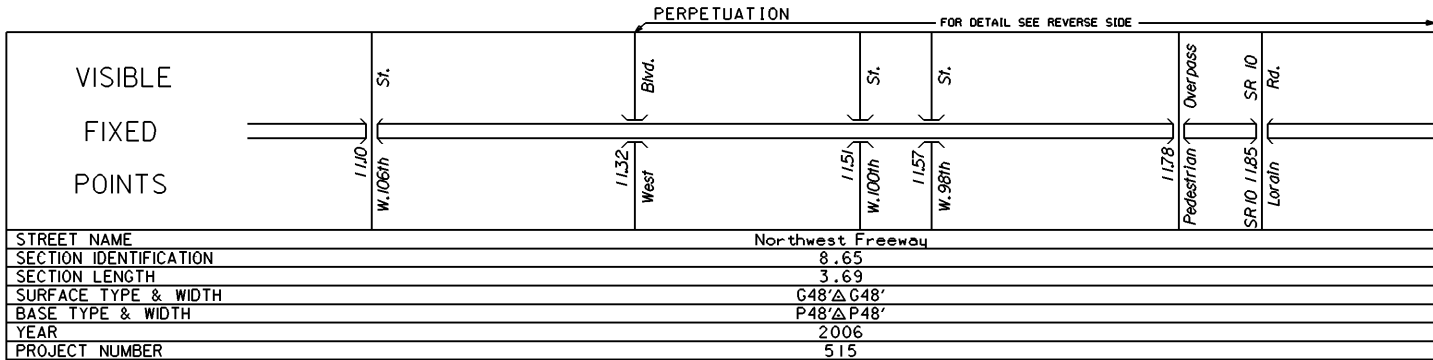
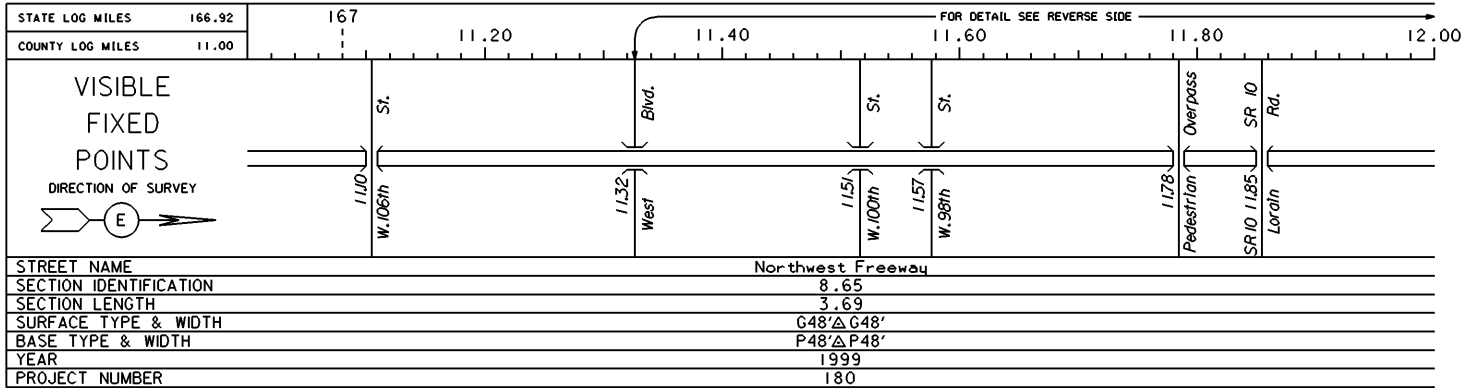


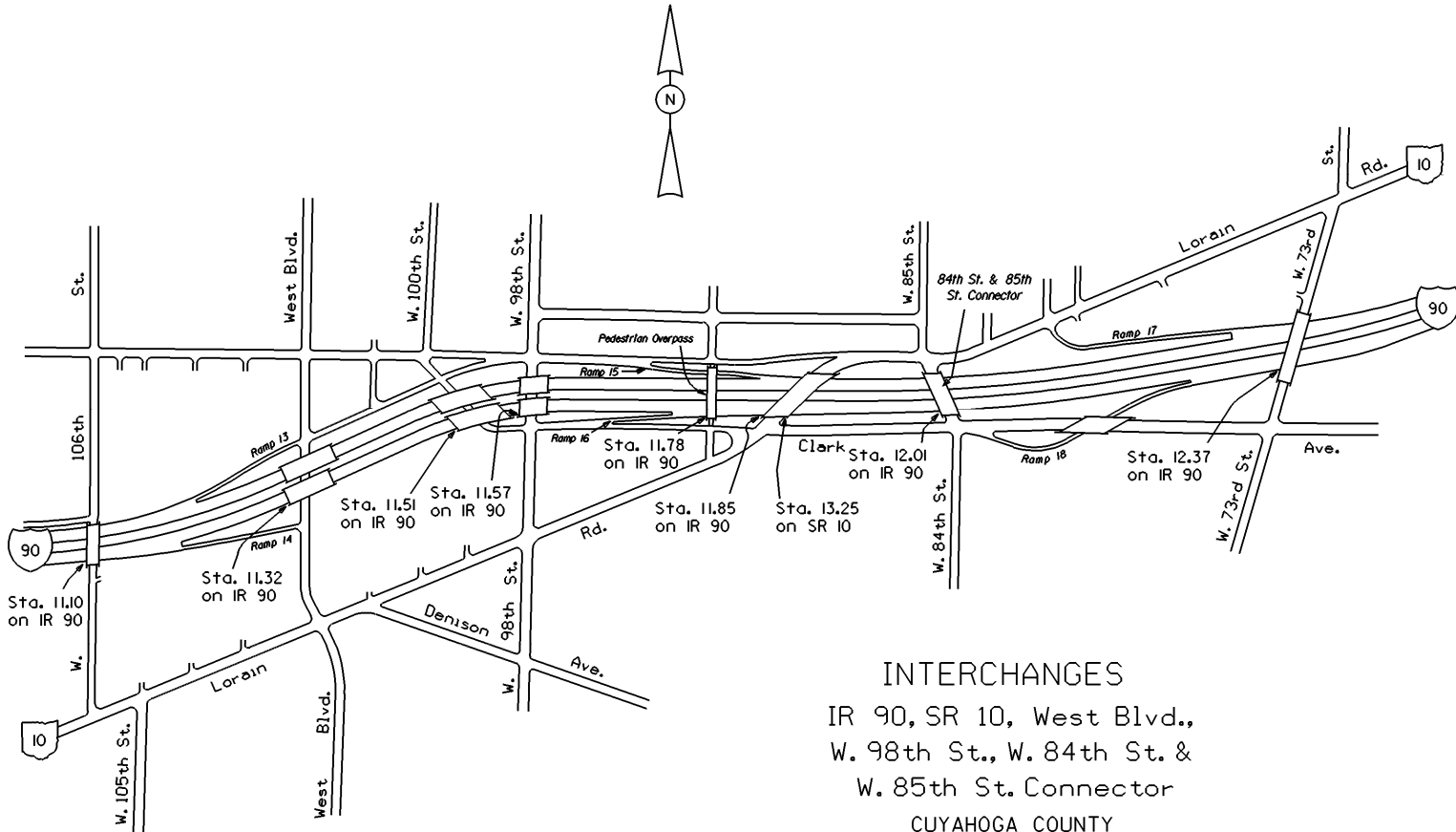
INTERCHANGE
IR 90 & W. 117 St.
CUYAHOGA COUNTY
INTERCHANGE ID NUMBER = 016500

STATE OF OHIO - DEPARTMENT OF TRANSPORTATION

STATE ROUTE SECTIONS ON CONTINUOUS MILEAGE STATIONING

DISTRICT 12
 COUNTY CUYAHOGA
 ROUTE IR 90



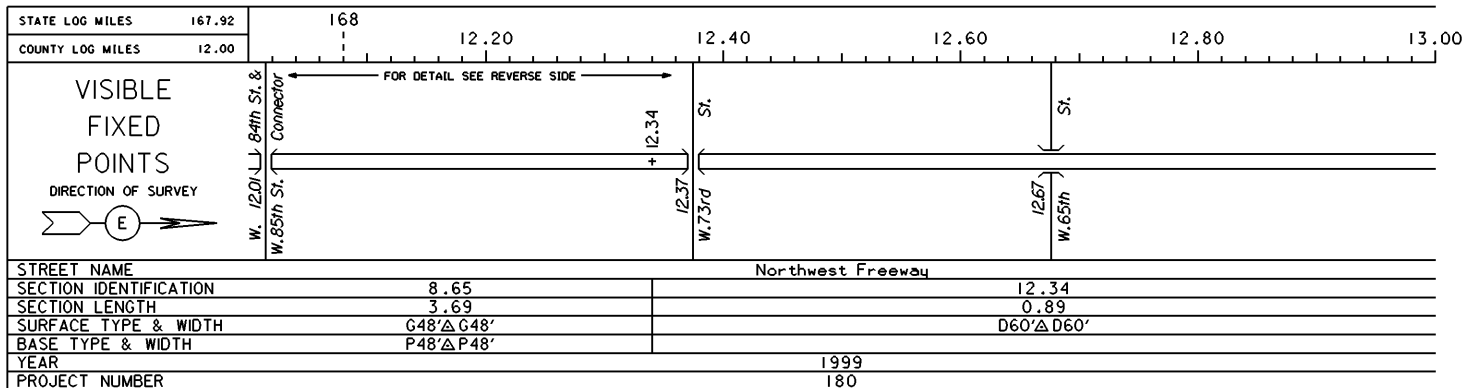


INTERCHANGES
 IR 90, SR 10, West Blvd.,
 W. 98th St., W. 84th St. &
 W. 85th St. Connector
 CUYAHOGA COUNTY
 INTERCHANGE ID NUMBER = 016600

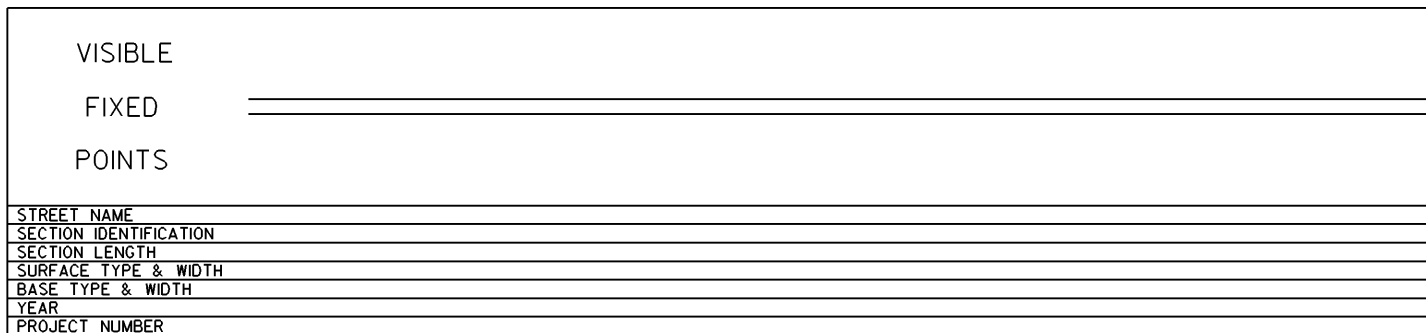
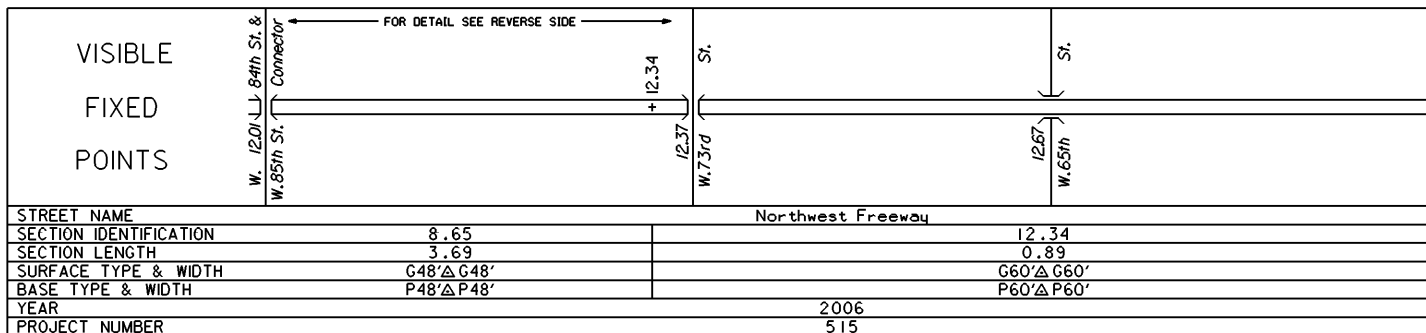
IR 90 SHEET 8 OF 21
 IR 90 SHEET 9 OF 21
 SR 10 SHEET 3 OF 4

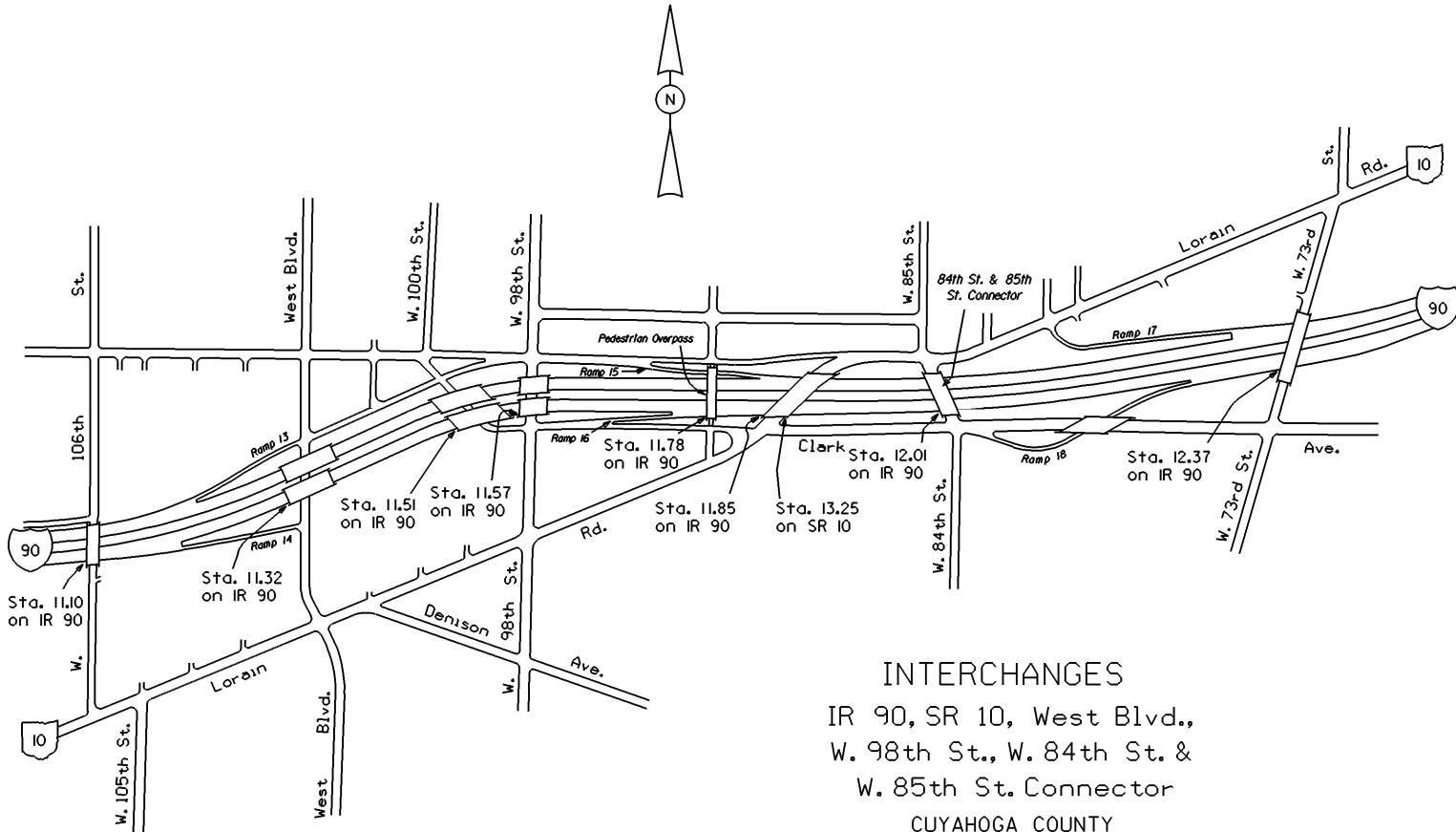
STATE OF OHIO - DEPARTMENT OF TRANSPORTATION
STATE ROUTE SECTIONS ON CONTINUOUS MILEAGE STATIONING

DISTRICT 12
COUNTY CUYAHOGA
ROUTE IR 90



PERPETUATION





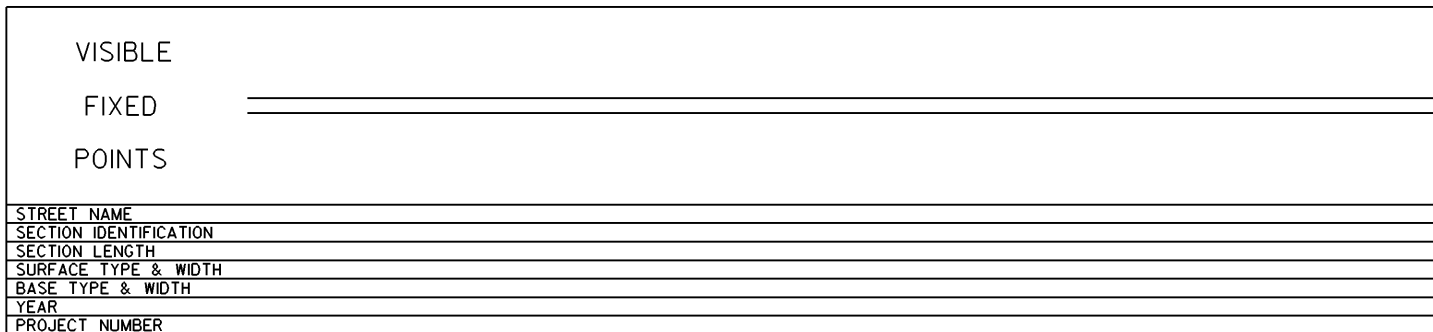
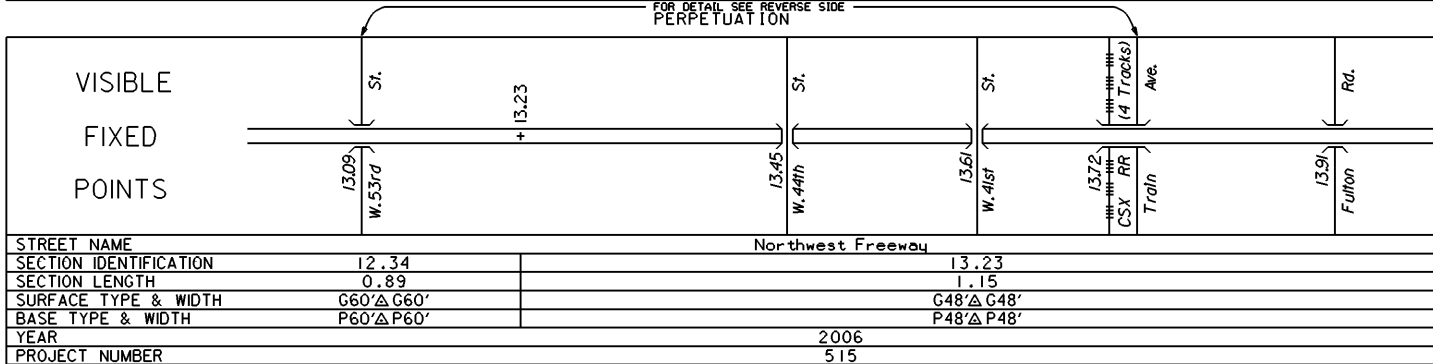
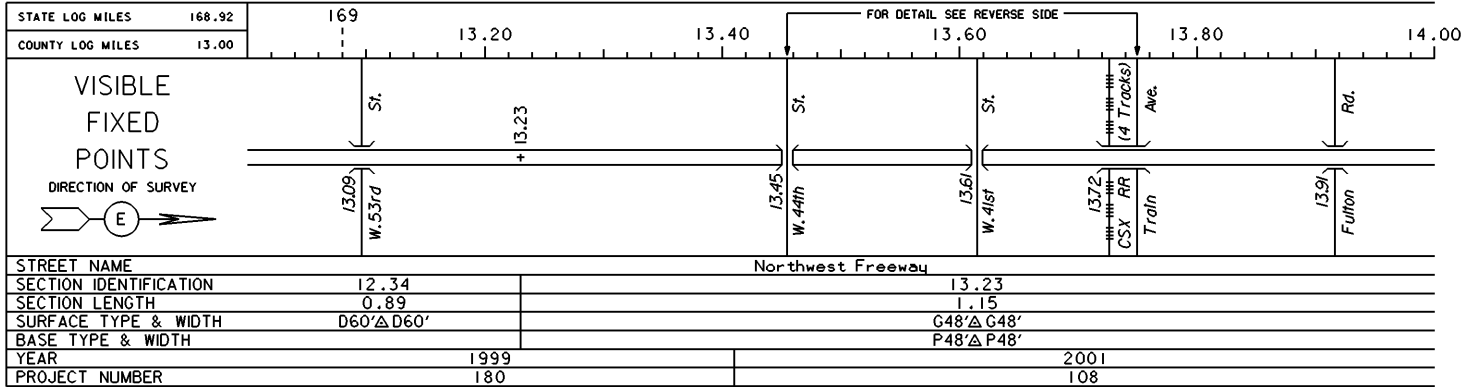
INTERCHANGES
 IR 90, SR 10, West Blvd.,
 W. 98th St., W. 84th St. &
 W. 85th St. Connector
 CUYAHOGA COUNTY
 INTERCHANGE ID NUMBER = 016600

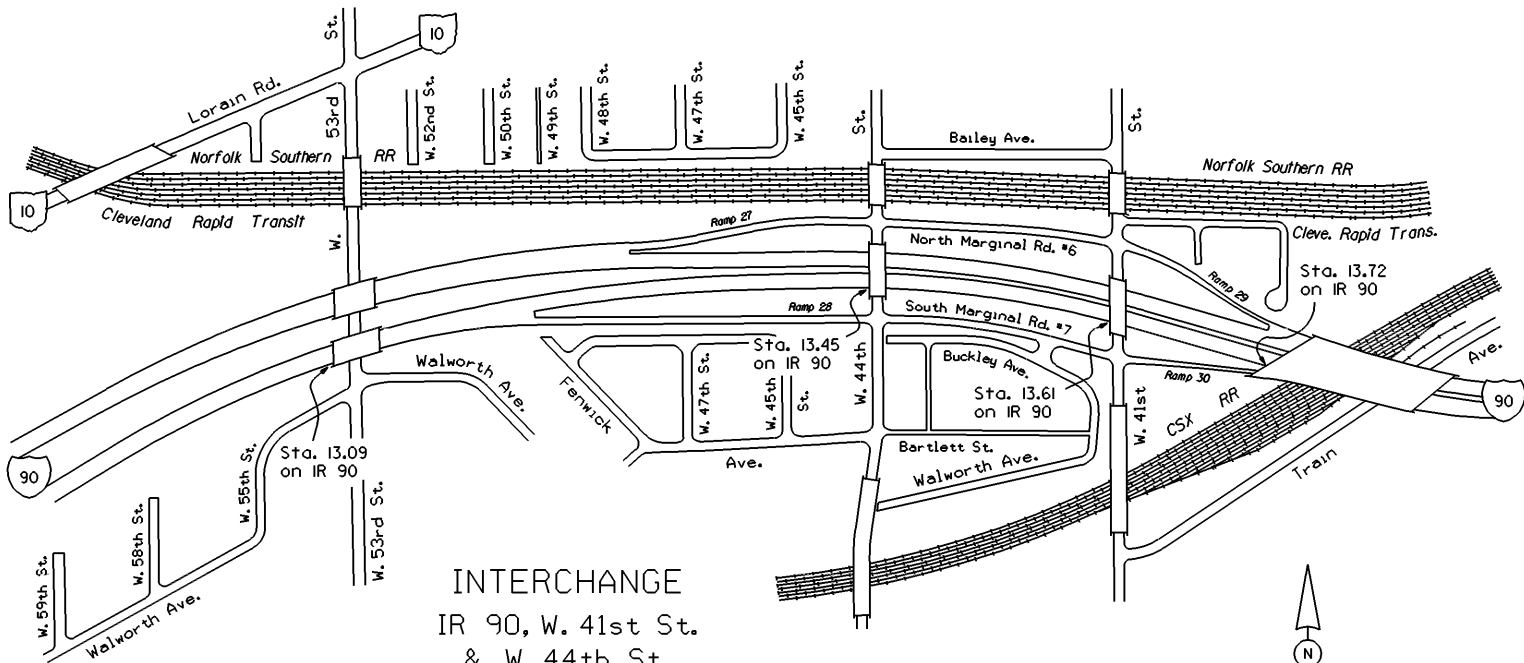
IR 90 SHEET 8 OF 21
 IR 90 SHEET 9 OF 21
 SR 10 SHEET 3 OF 4

STATE OF OHIO - DEPARTMENT OF TRANSPORTATION

STATE ROUTE SECTIONS ON CONTINUOUS MILEAGE STATIONING

DISTRICT 12
 COUNTY CUYAHOGA
 ROUTE IR 90

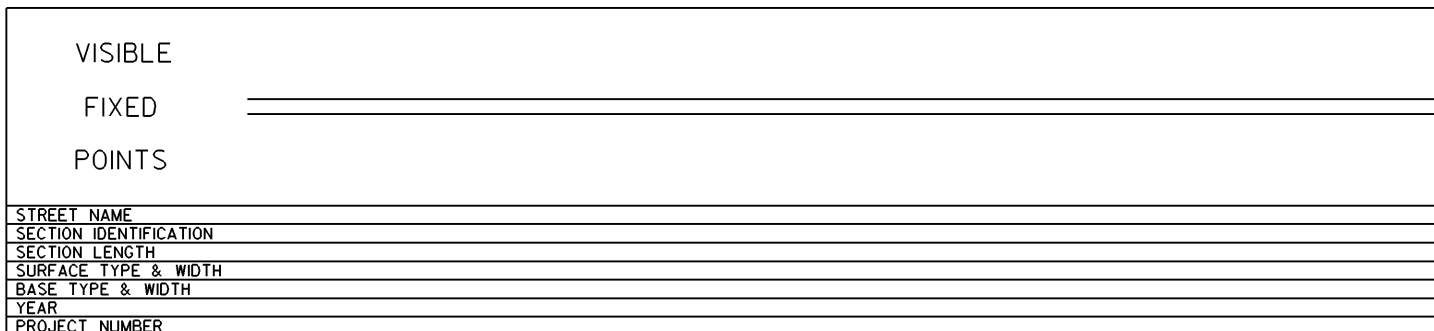
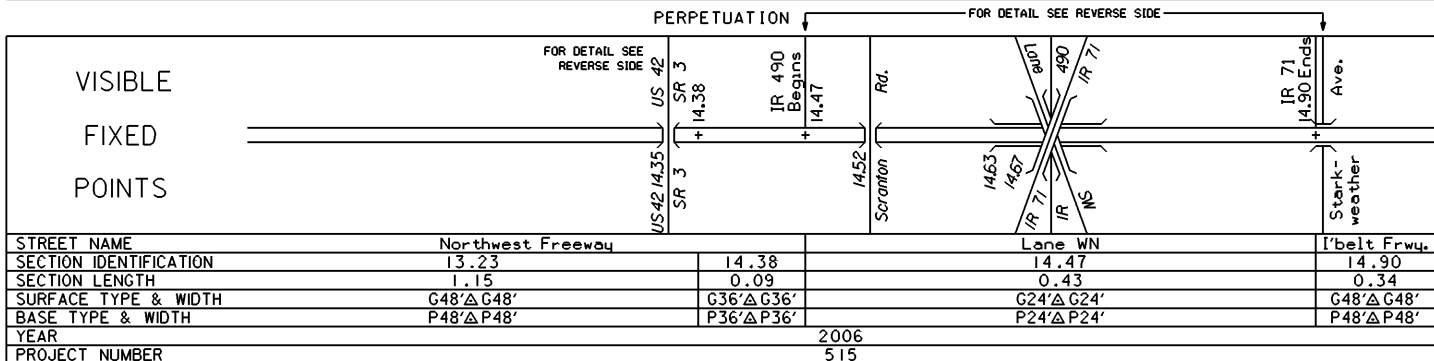
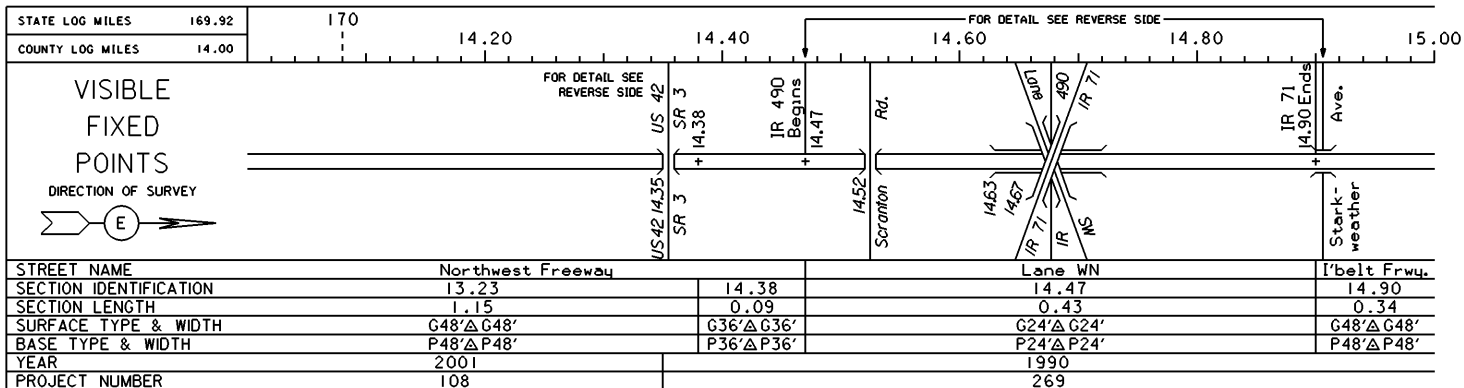




INTERCHANGE
 IR 90, W. 41st St.
 & W. 44th St.
 CUYAHOGA COUNTY
 INTERCHANGE ID NUMBER = 016800

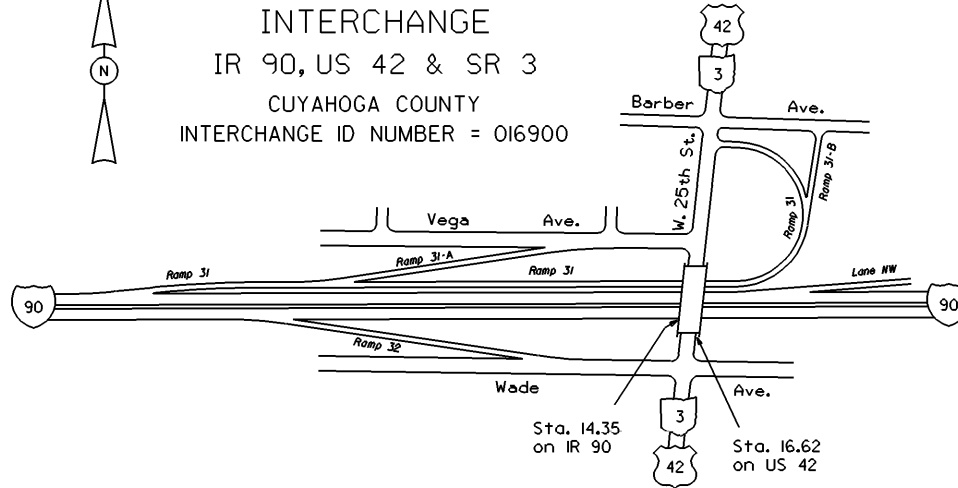
STATE OF OHIO - DEPARTMENT OF TRANSPORTATION
STATE ROUTE SECTIONS ON CONTINUOUS MILEAGE STATIONING

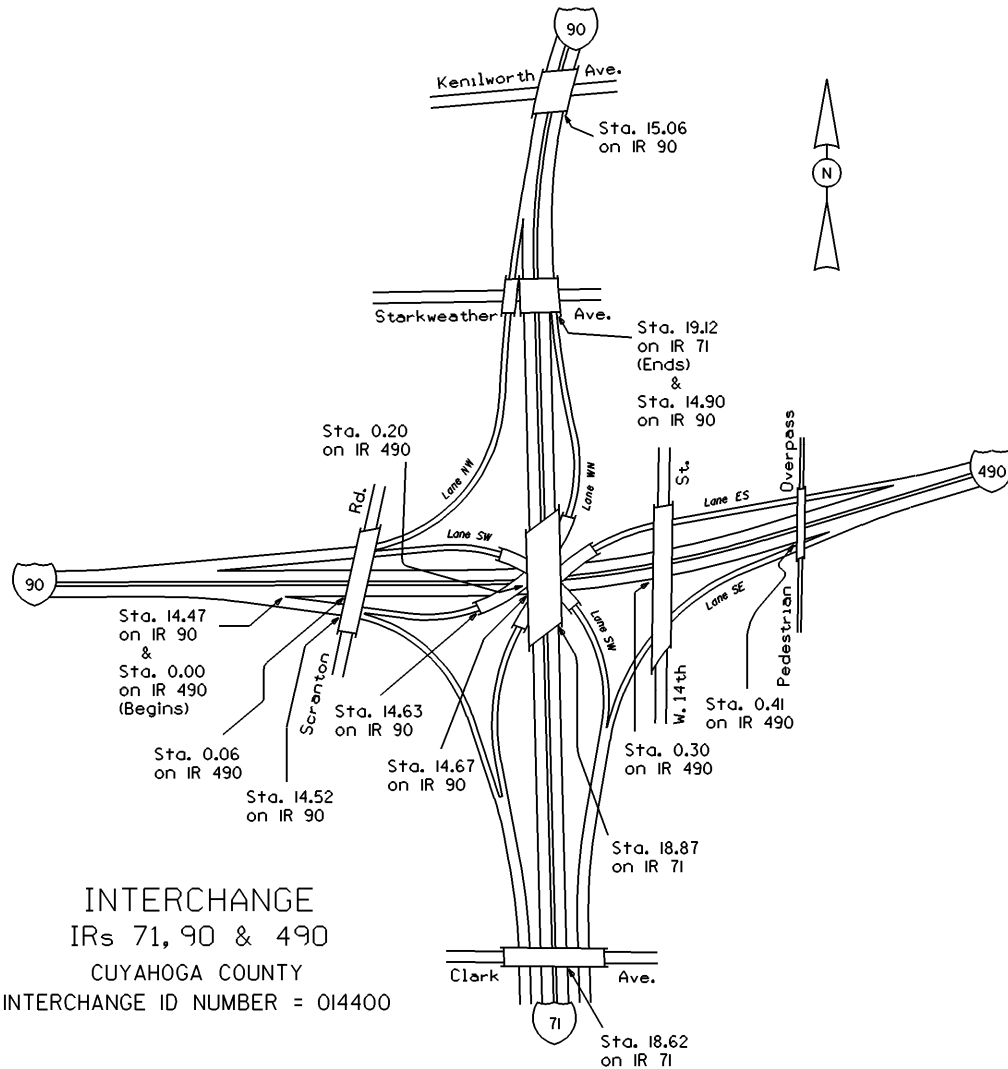
DISTRICT 12
COUNTY CUYAHOGA
ROUTE IR 90





INTERCHANGE
IR 90, US 42 & SR 3
CUYAHOGA COUNTY
INTERCHANGE ID NUMBER = 016900





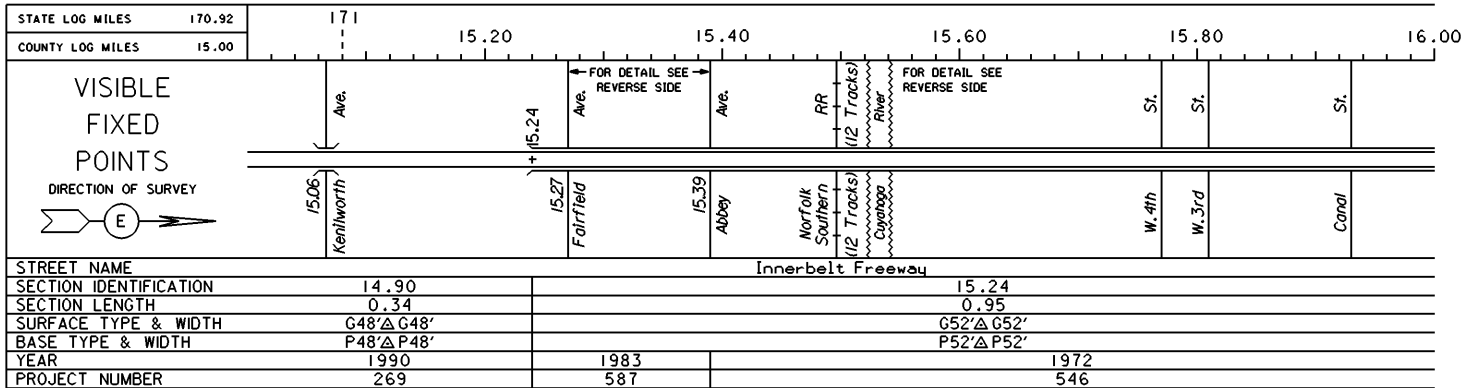
INTERCHANGE
 IRs 71, 90 & 490
 CUYAHOGA COUNTY
 INTERCHANGE ID NUMBER = 014400

CUY IR71 SHEET 7 OF 8
 CUY IR71 SHEET 8 OF 8
 CUY IR90 SHEET 11 OF 21
 CUY IR490 SHEET 1 OF 1

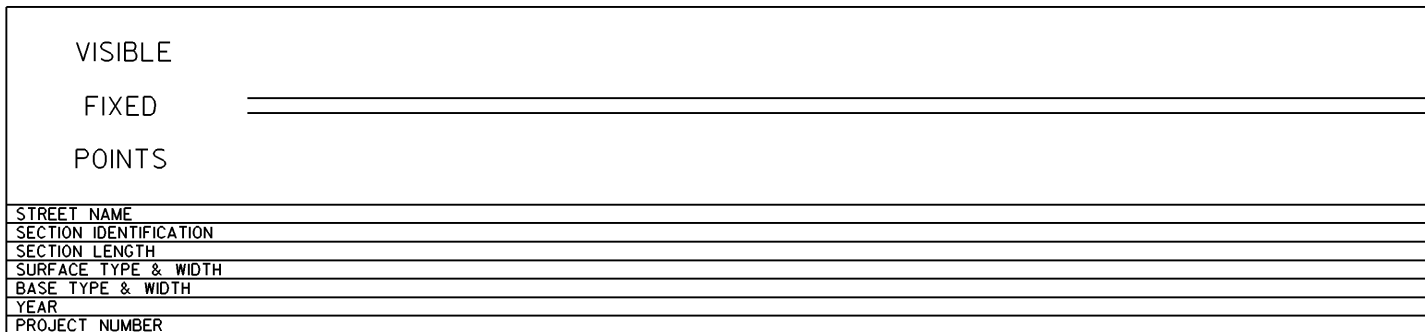
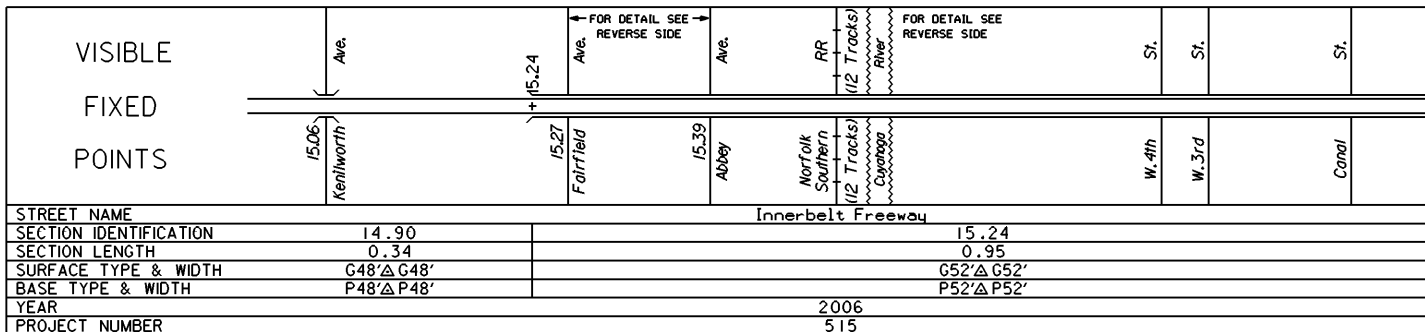
STATE OF OHIO - DEPARTMENT OF TRANSPORTATION

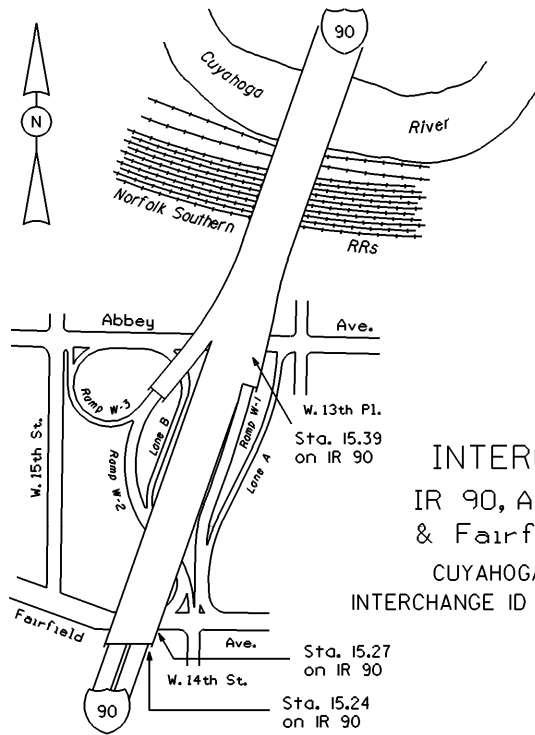
STATE ROUTE SECTIONS ON CONTINUOUS MILEAGE STATIONING

DISTRICT 12
 COUNTY CUYAHOGA
 ROUTE IR 90



PERPETUATION



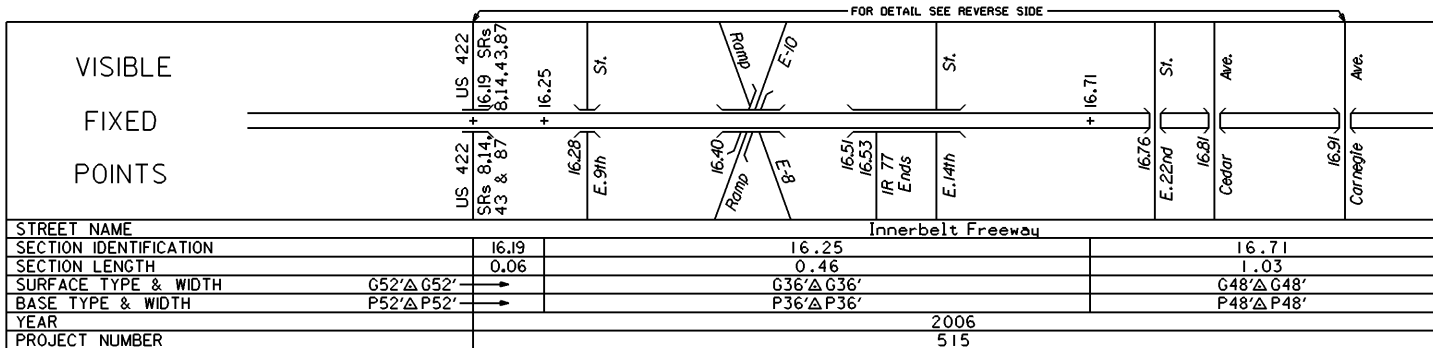
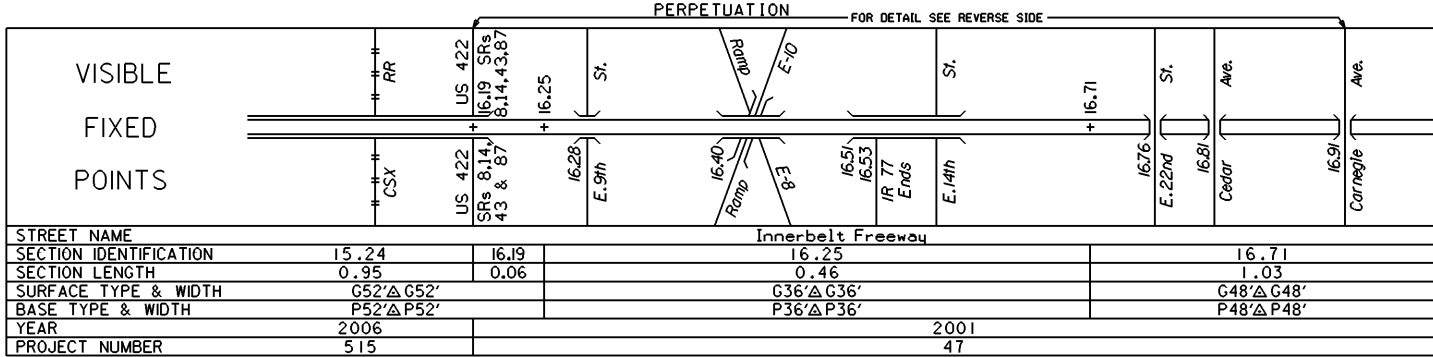
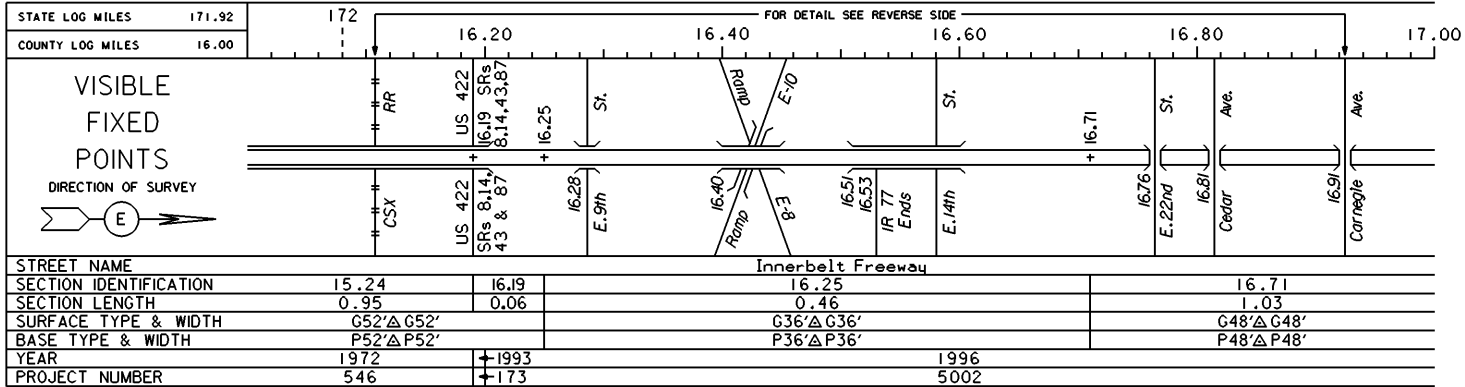


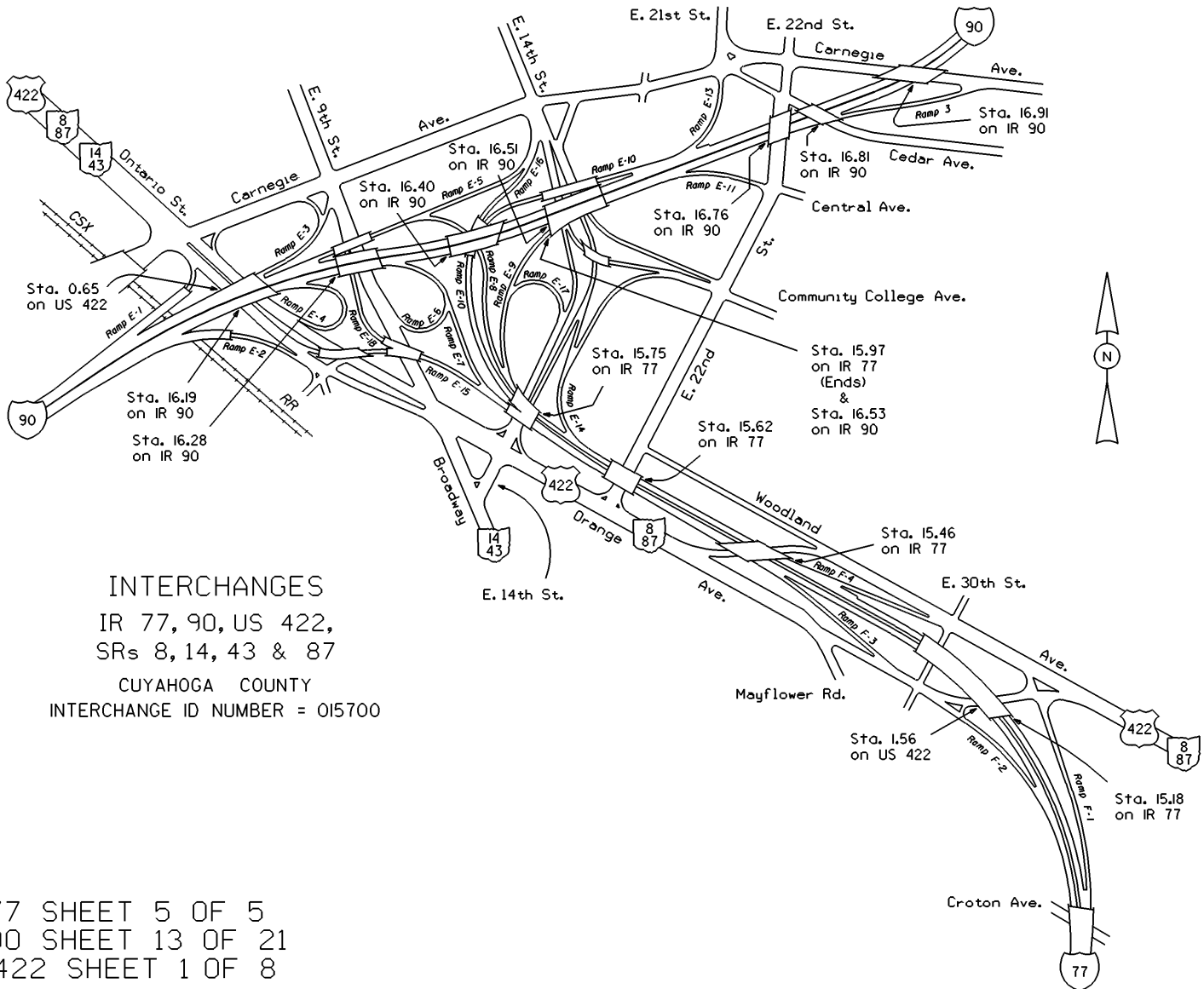
INTERCHANGE
 IR 90, Abbey Ave.
 & Fairfield Ave.
 CUYAHOGA COUNTY
 INTERCHANGE ID NUMBER = 017000

STATE OF OHIO - DEPARTMENT OF TRANSPORTATION

STATE ROUTE SECTIONS ON CONTINUOUS MILEAGE STATIONING

DISTRICT 12
 COUNTY CUYAHOGA
 ROUTE IR 90



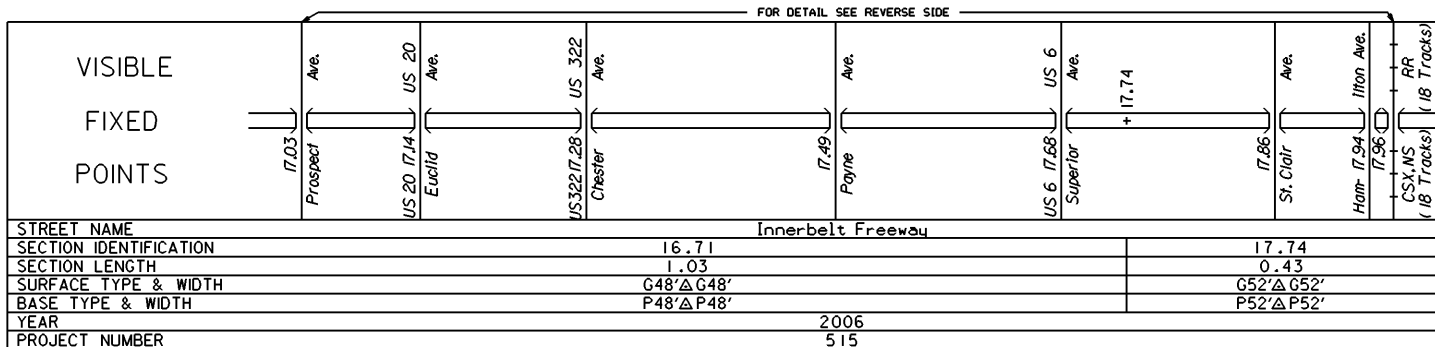
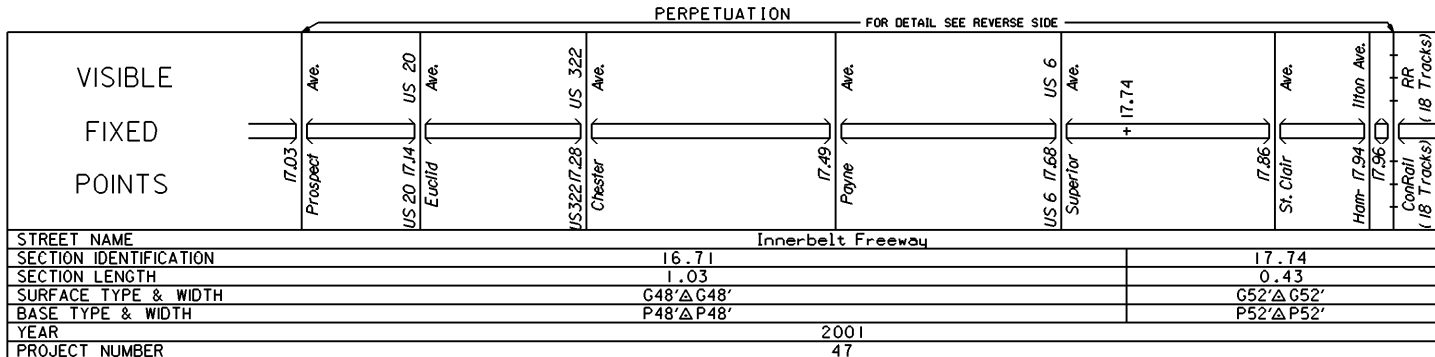
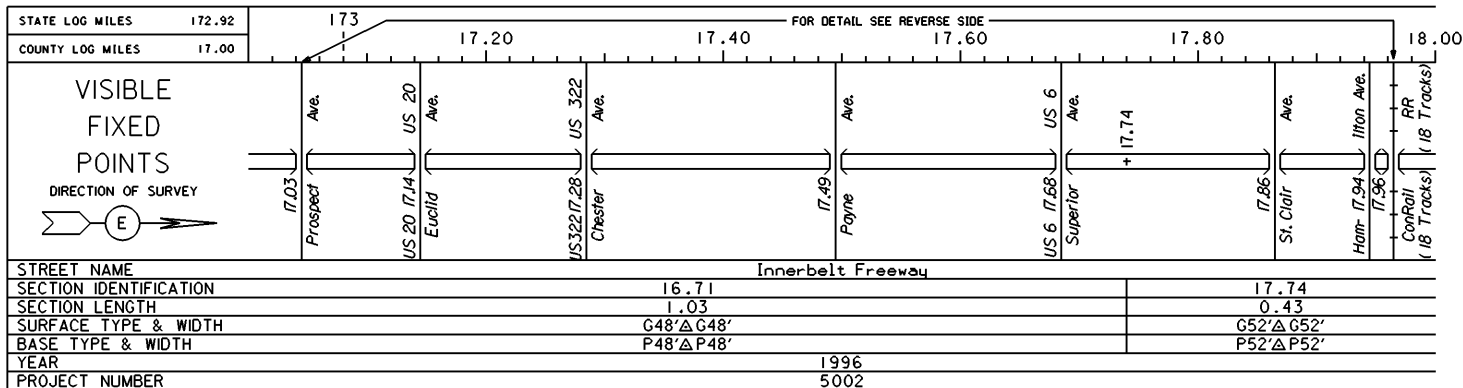


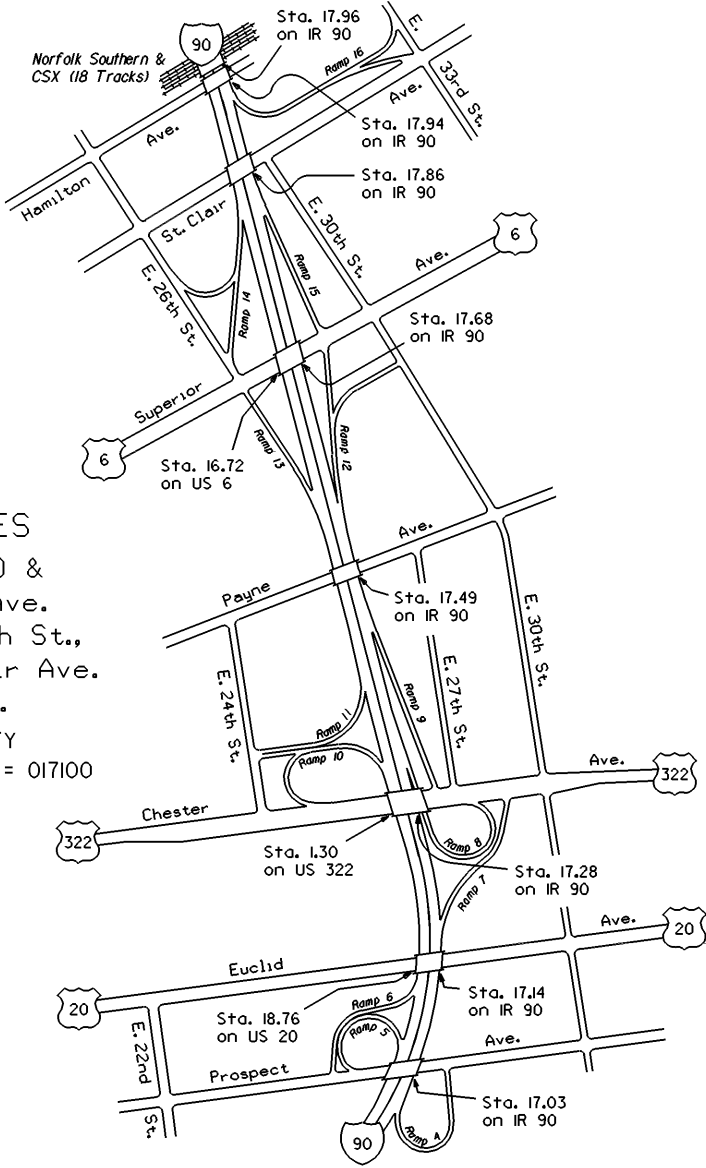
INTERCHANGES
 IR 77, 90, US 422,
 SRs 8, 14, 43 & 87
 CUYAHOGA COUNTY
 INTERCHANGE ID NUMBER = 015700

IR 77 SHEET 5 OF 5
 IR 90 SHEET 13 OF 21
 US 422 SHEET 1 OF 8

STATE OF OHIO - DEPARTMENT OF TRANSPORTATION
STATE ROUTE SECTIONS ON CONTINUOUS MILEAGE STATIONING

DISTRICT 12
COUNTY CUYAHOGA
ROUTE IR 90





INTERCHANGES

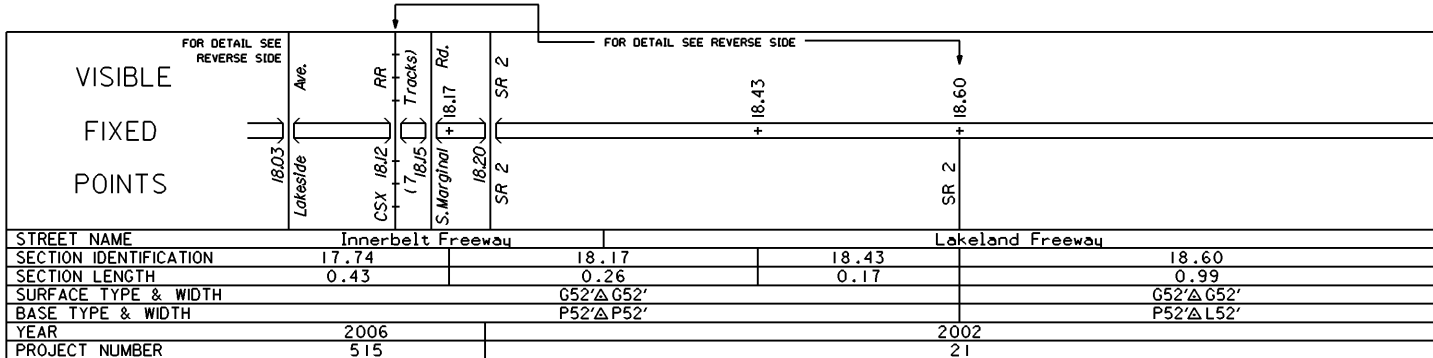
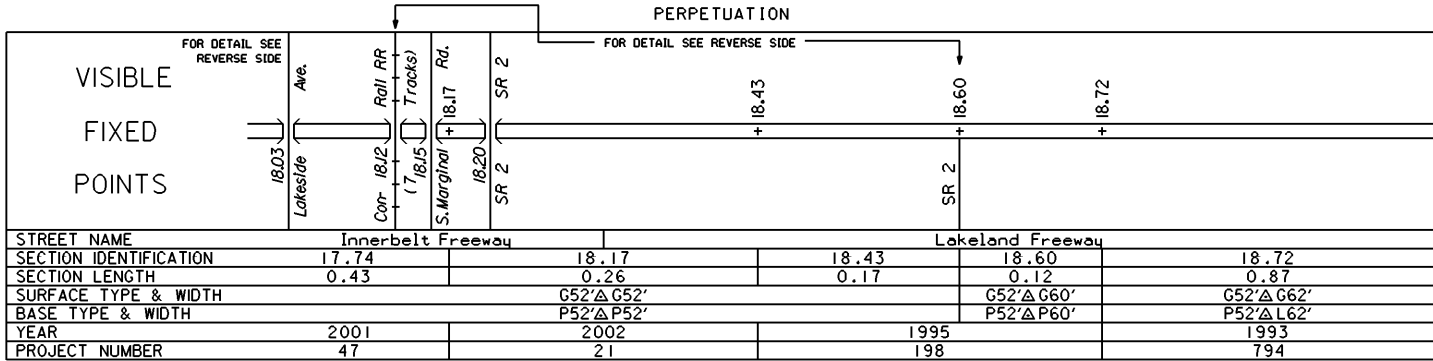
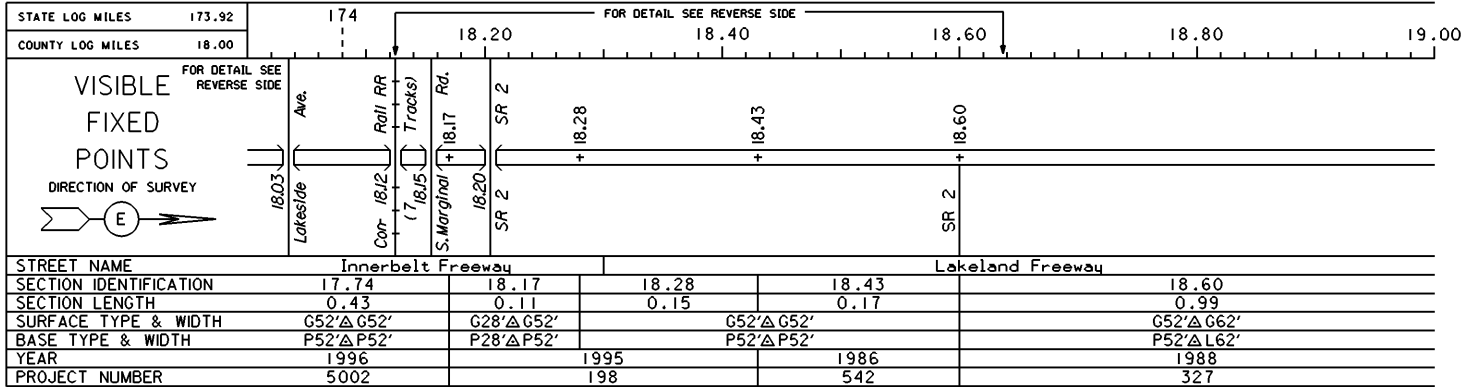
IR 90, USs 6, 20 &
322, Prospect Ave.
E. 24th St., E. 26th St.,
E. 30th St., St. Clair Ave.
& E. 33rd St.

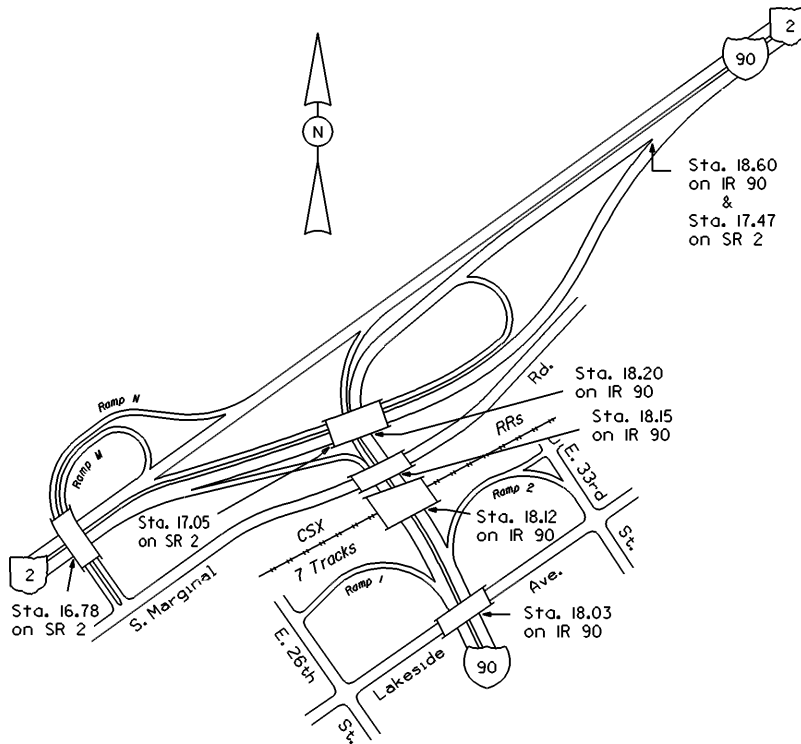
CUYAHOGA COUNTY
INTERCHANGE ID NUMBER = 017100

STATE OF OHIO - DEPARTMENT OF TRANSPORTATION

STATE ROUTE SECTIONS ON CONTINUOUS MILEAGE STATIONING

DISTRICT	12
COUNTY	CUYAHOGA
ROUTE	1R 90

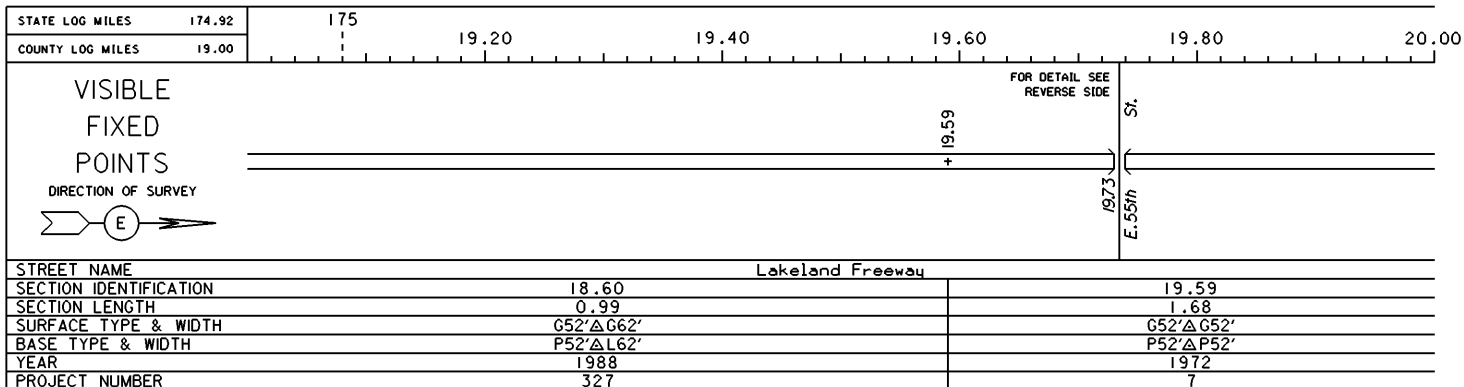




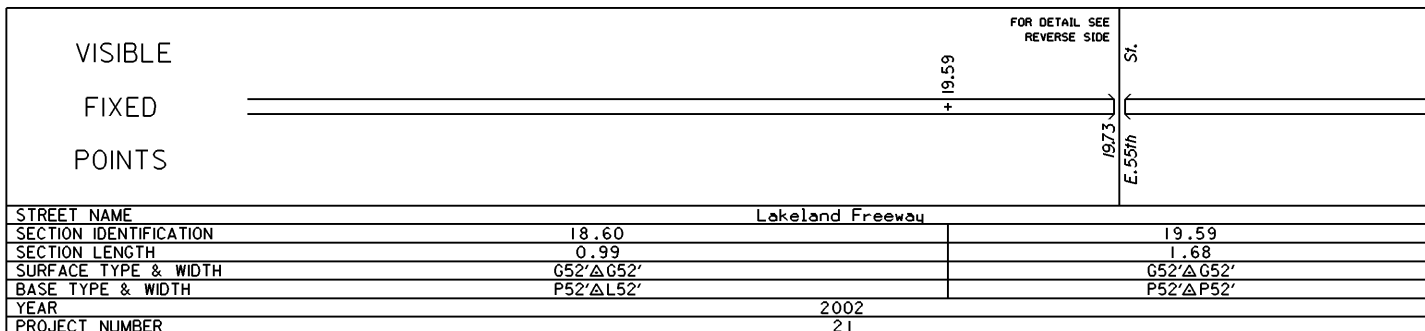
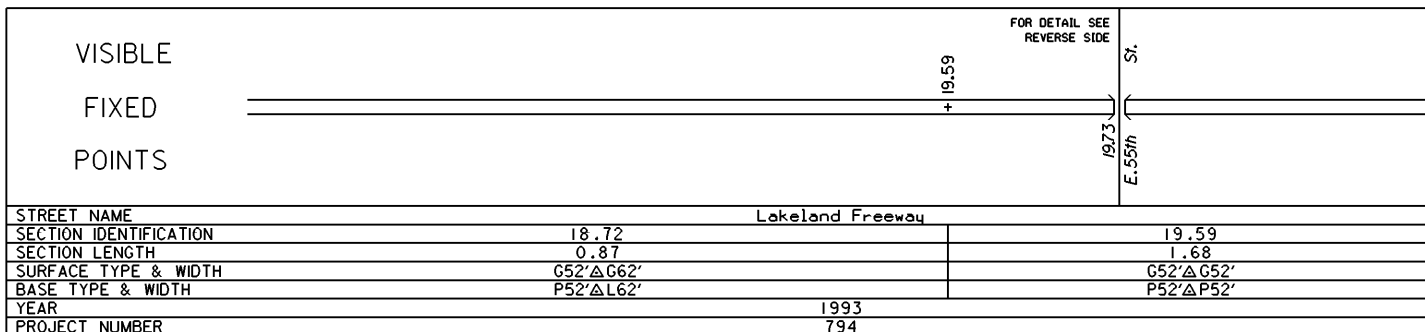
INTERCHANGE
 IR 90 & SR 2
 CUYAHOGA COUNTY
 INTERCHANGE ID NUMBER = 017200

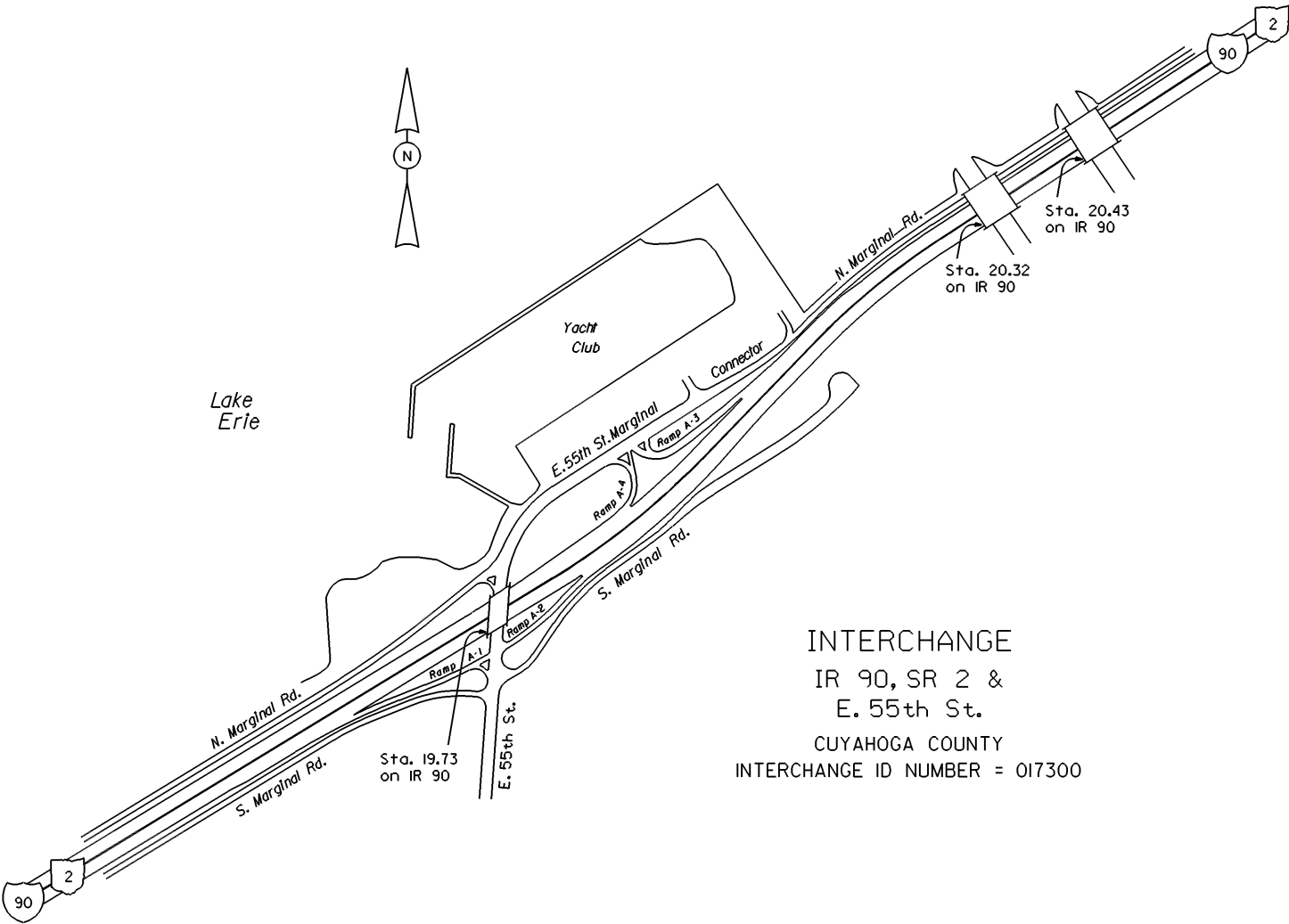
STATE OF OHIO - DEPARTMENT OF TRANSPORTATION
STATE ROUTE SECTIONS ON CONTINUOUS MILEAGE STATIONING

DISTRICT 12
COUNTY CUYAHOGA
ROUTE IR 90



PERPETUATION



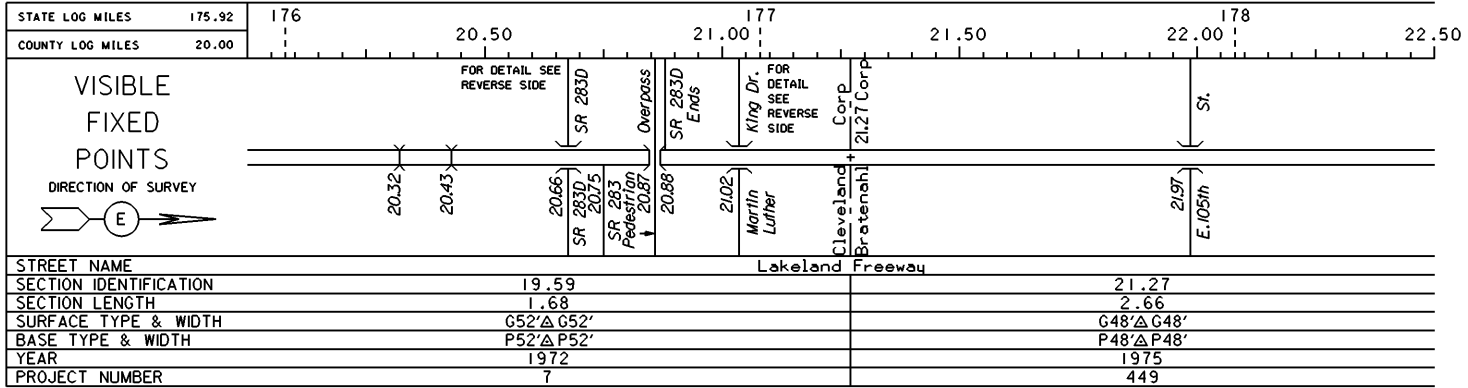


INTERCHANGE
 IR 90, SR 2 &
 E. 55th St.
 CUYAHOGA COUNTY
 INTERCHANGE ID NUMBER = 017300

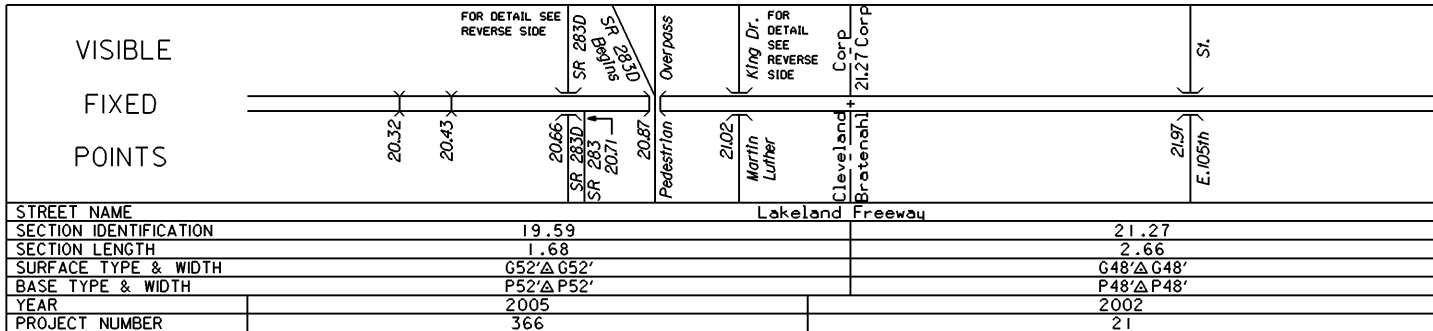
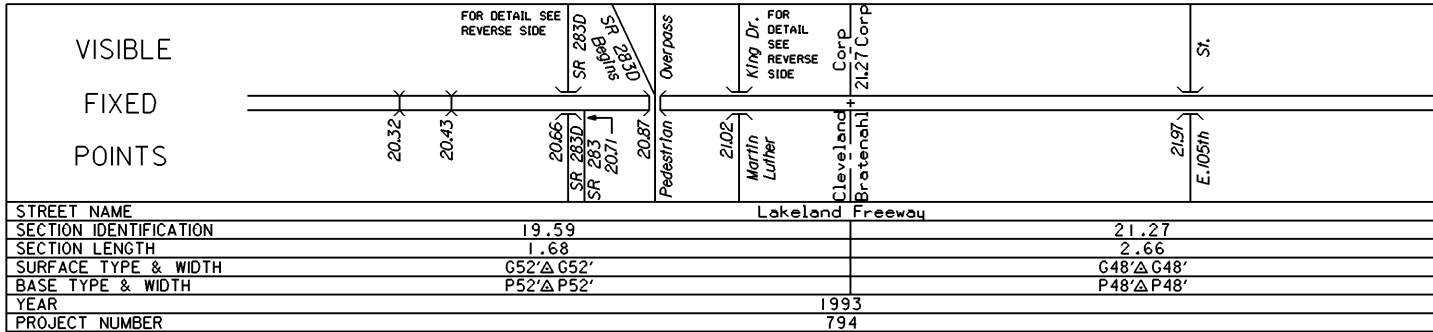
STATE OF OHIO - DEPARTMENT OF TRANSPORTATION

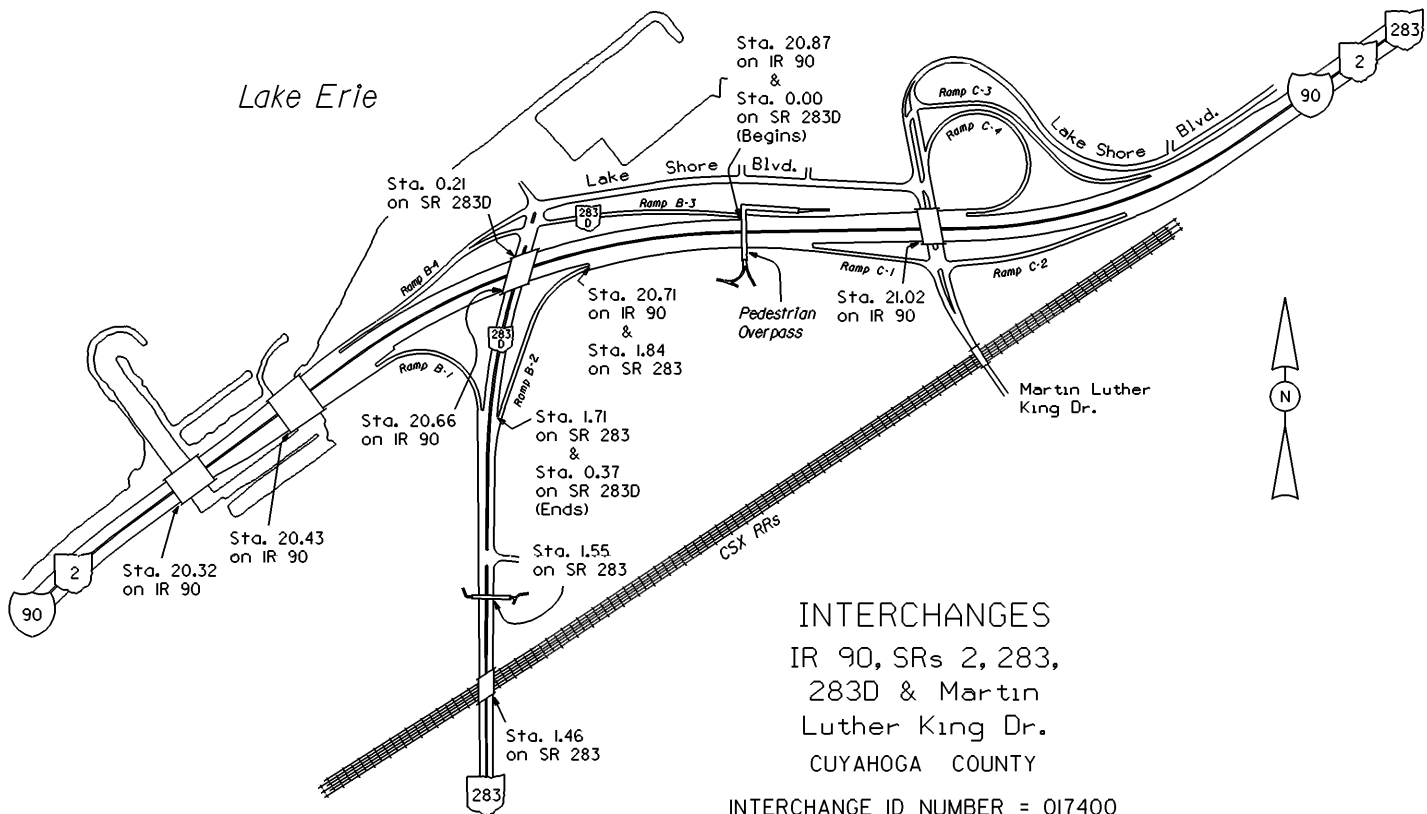
STATE ROUTE SECTIONS ON CONTINUOUS MILEAGE STATIONING

DISTRICT 12
 COUNTY CUYAHOGA
 ROUTE IR 90



PERPETUATION





INTERCHANGES
 IR 90, SRs 2, 283,
 283D & Martin
 Luther King Dr.
 CUYAHOGA COUNTY

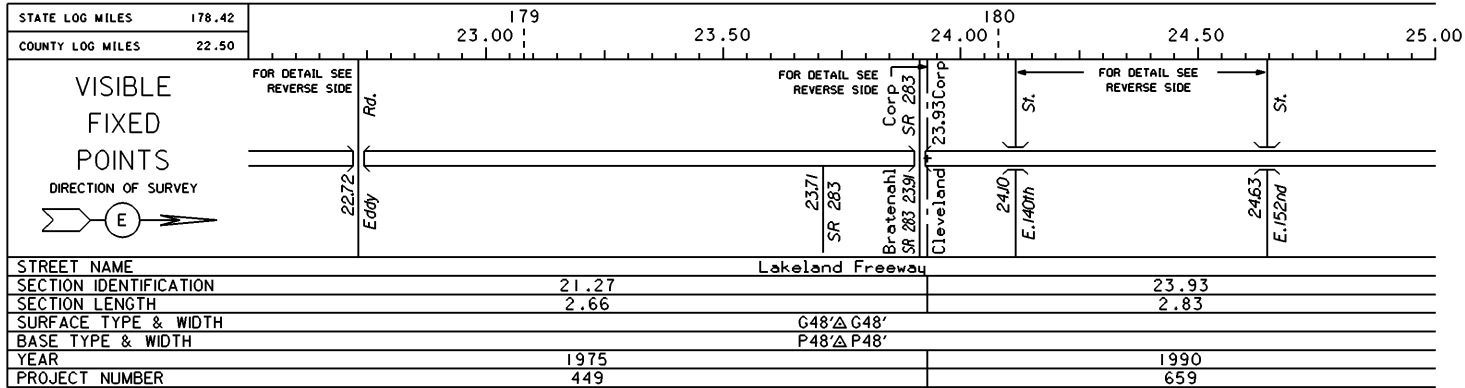
INTERCHANGE ID NUMBER = 017400

IR 90 SHEET 17 OF 21
 SR 283 SHEET 1 OF 3
 SR 283D SHEET 1 OF 1

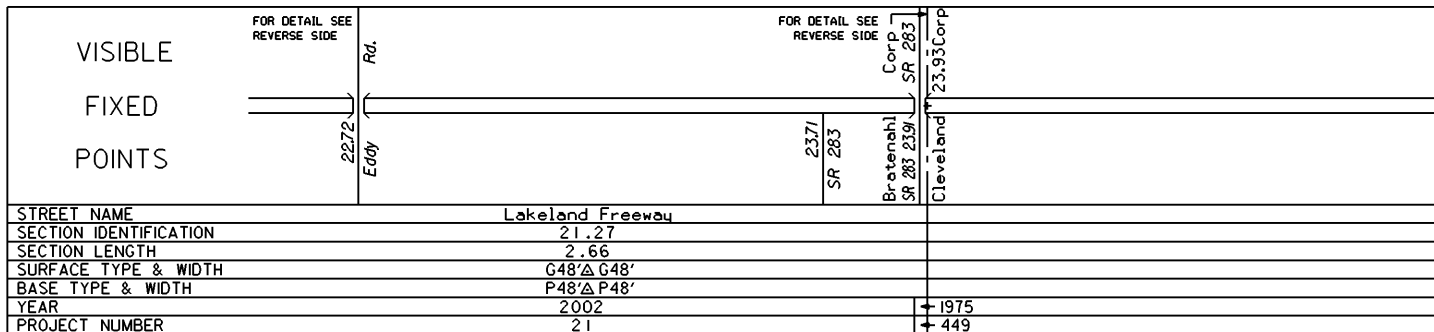
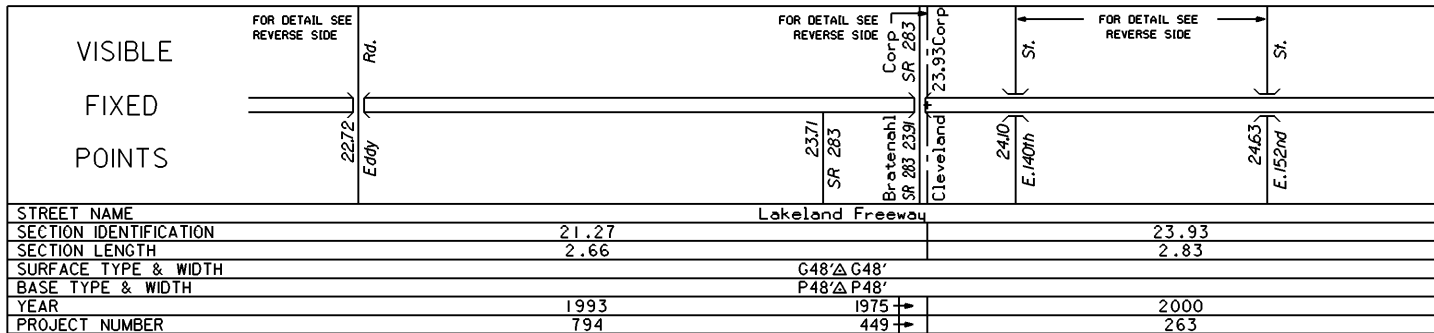
STATE OF OHIO - DEPARTMENT OF TRANSPORTATION

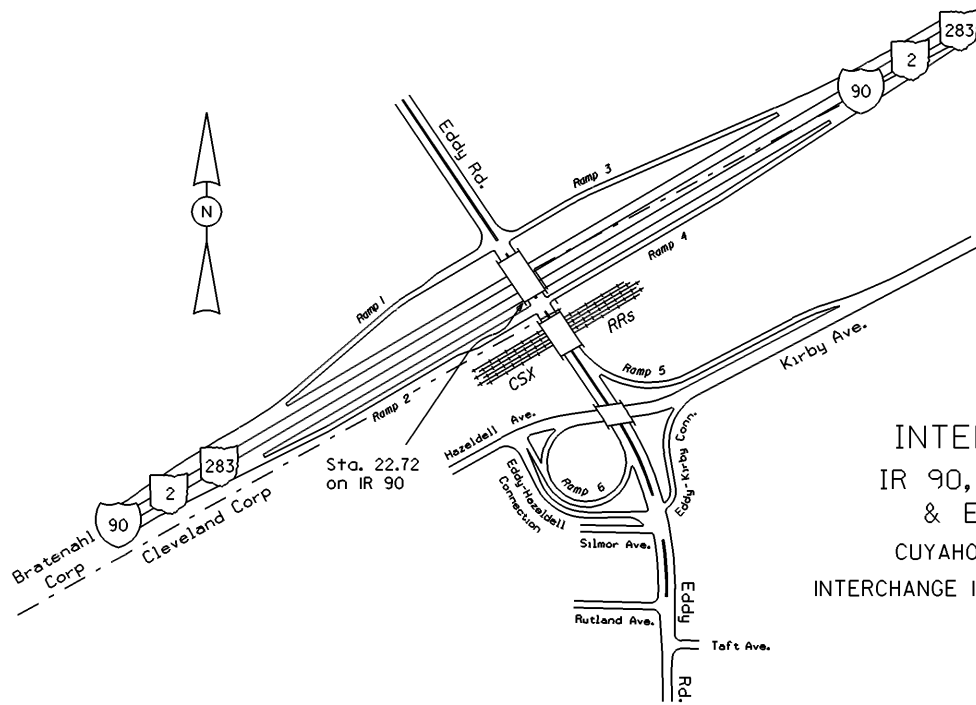
STATE ROUTE SECTIONS ON CONTINUOUS MILEAGE STATIONING

DISTRICT 12
 COUNTY CUYAHOGA
 ROUTE IR 90

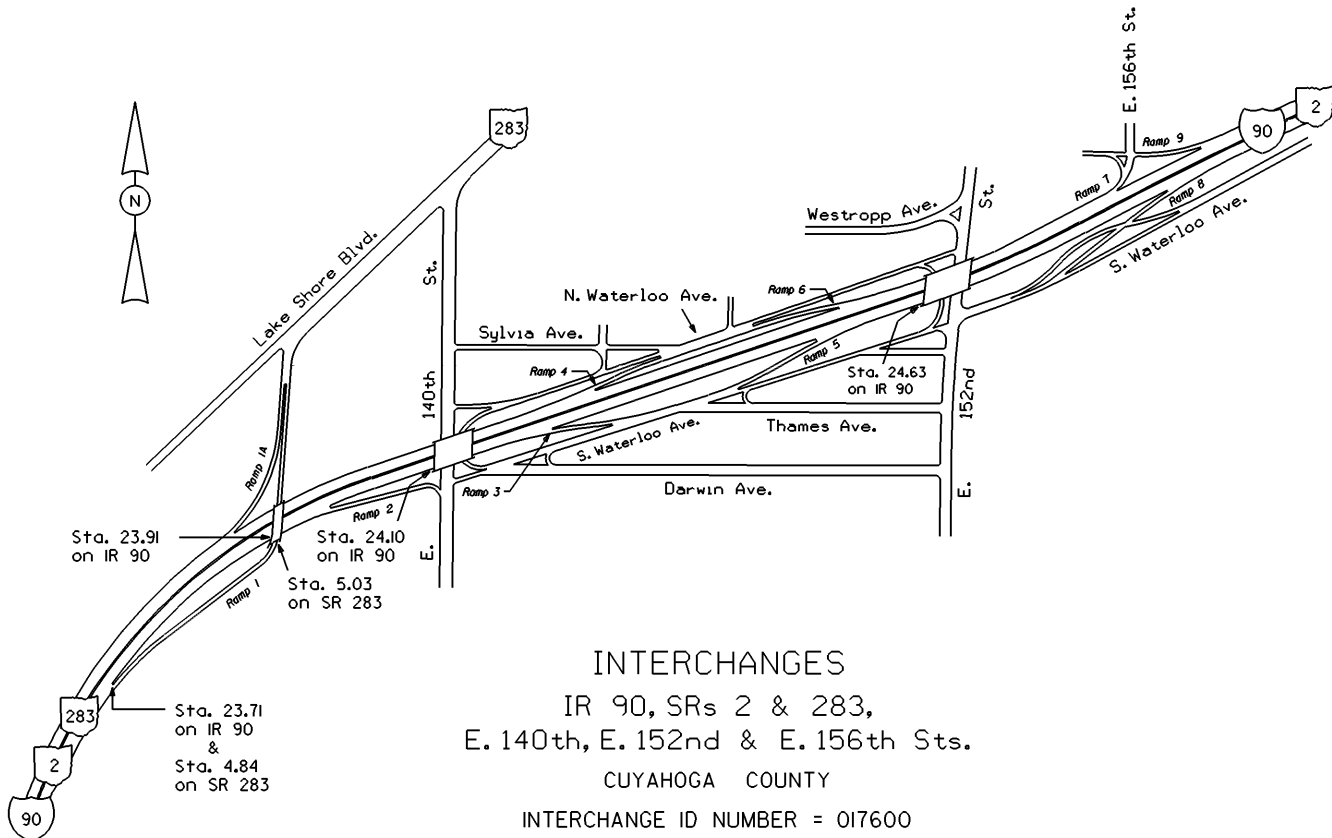


PERPETUATION





INTERCHANGE
 IR 90, SRs 2, 283
 & Eddy Rd.
 CUYAHOGA COUNTY
 INTERCHANGE ID NUMBER = 017500

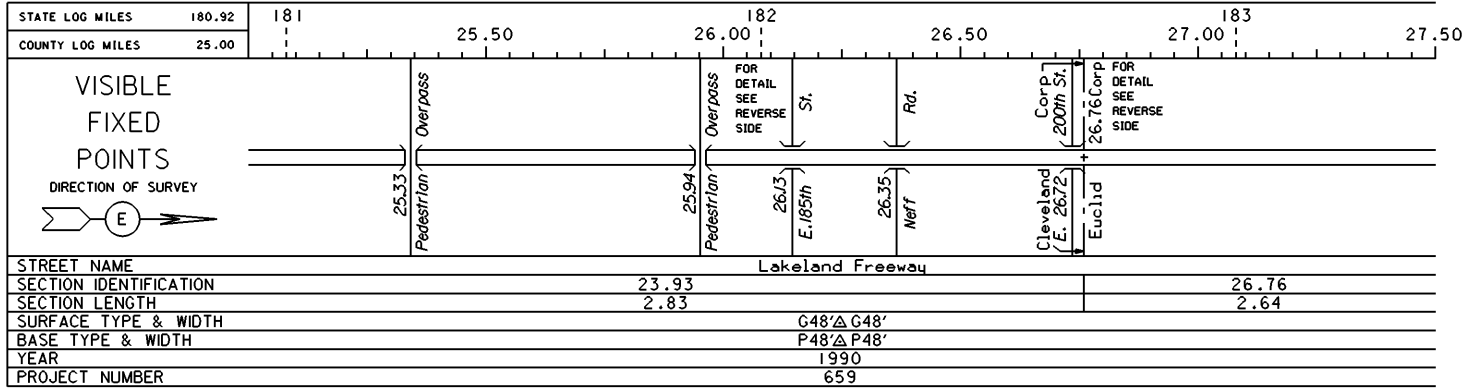


INTERCHANGES
 IR 90, SRs 2 & 283,
 E. 140th, E. 152nd & E. 156th Sts.
 CUYAHOGA COUNTY
 INTERCHANGE ID NUMBER = 017600

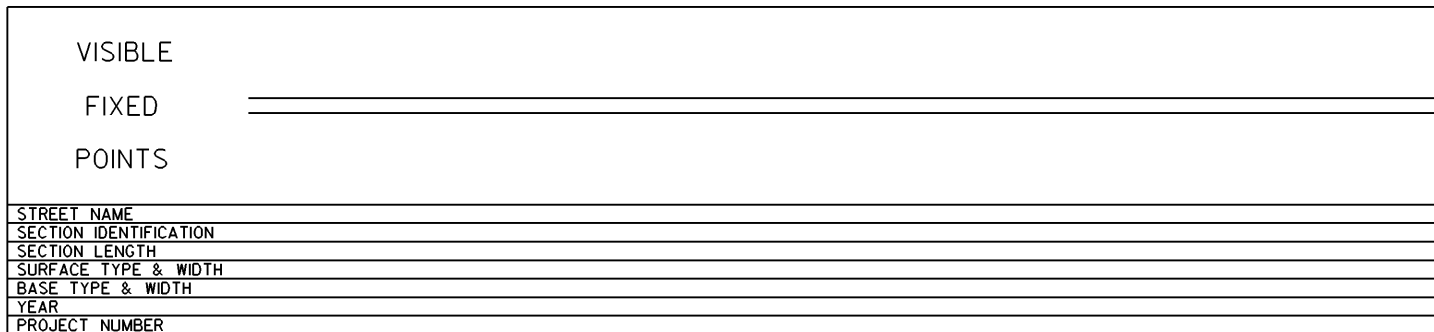
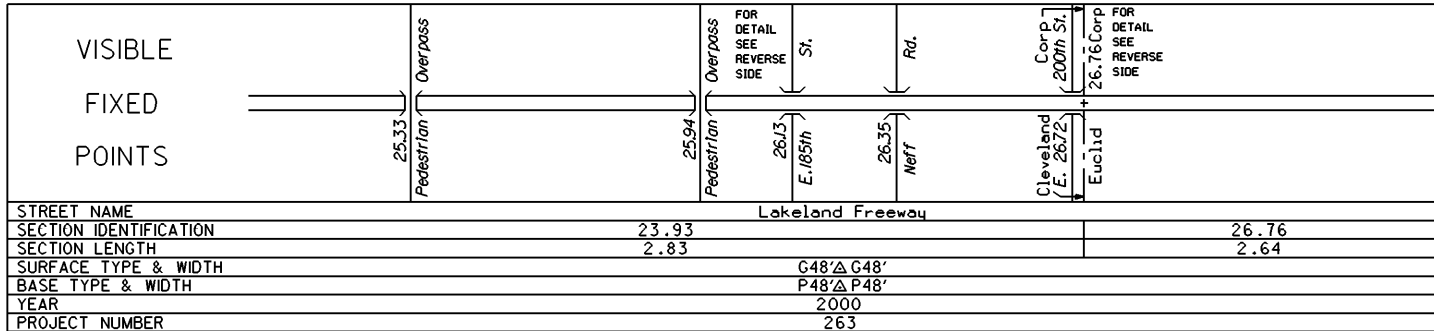
STATE OF OHIO - DEPARTMENT OF TRANSPORTATION

STATE ROUTE SECTIONS ON CONTINUOUS MILEAGE STATIONING

DISTRICT	12
COUNTY	CUYAHOGA
ROUTE	1R 90

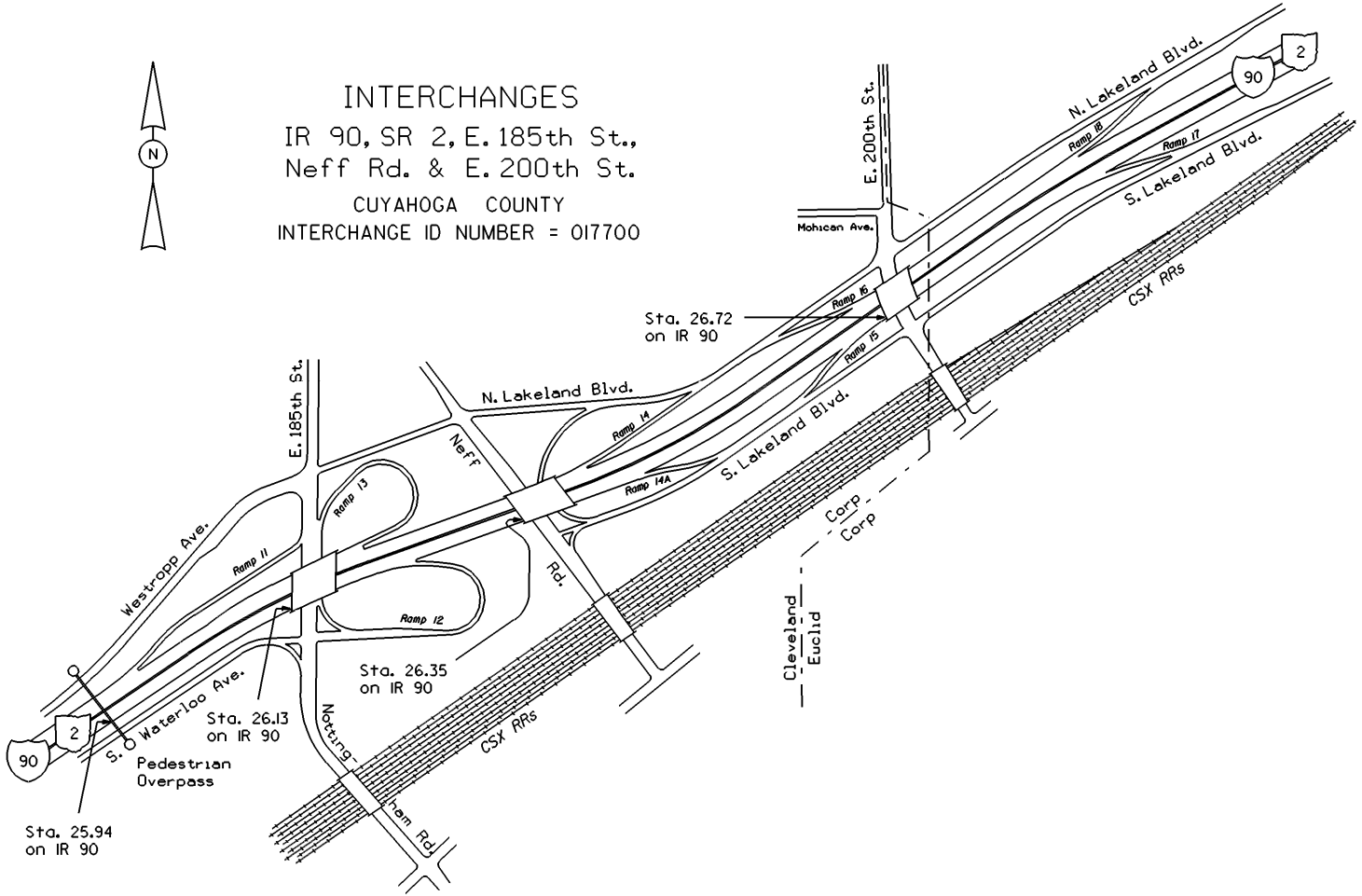


PERPETUATION



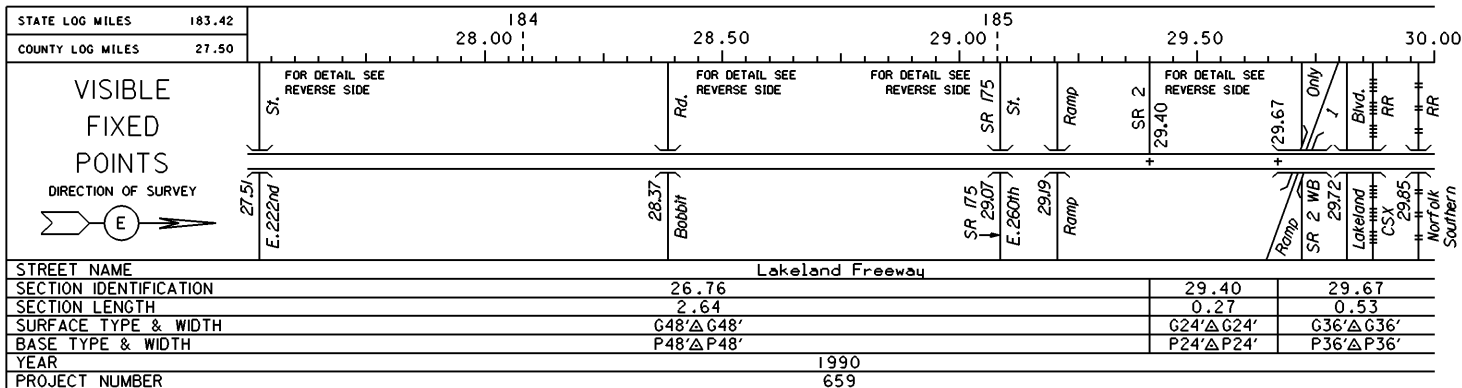


INTERCHANGES
IR 90, SR 2, E. 185th St.,
Neff Rd. & E. 200th St.
CUYAHOGA COUNTY
INTERCHANGE ID NUMBER = 017700

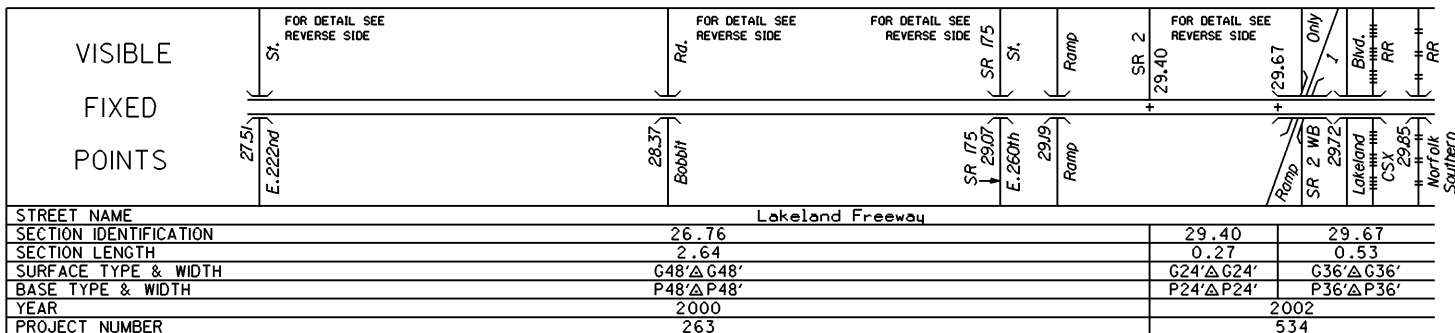


STATE OF OHIO - DEPARTMENT OF TRANSPORTATION
STATE ROUTE SECTIONS ON CONTINUOUS MILEAGE STATIONING

DISTRICT 12
COUNTY CUYAHOGA
ROUTE IR 90



PERPETUATION

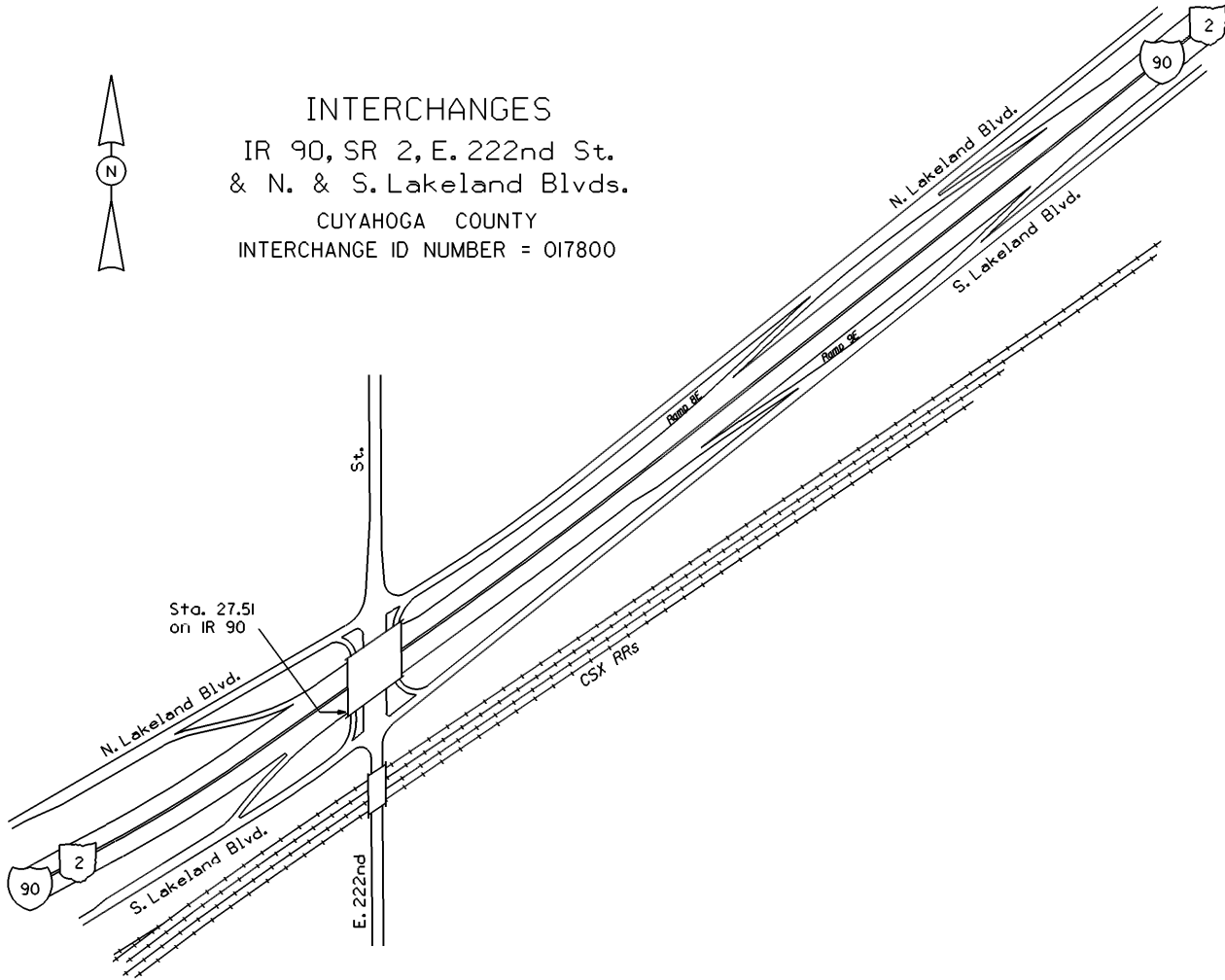


VISIBLE
FIXED
POINTS

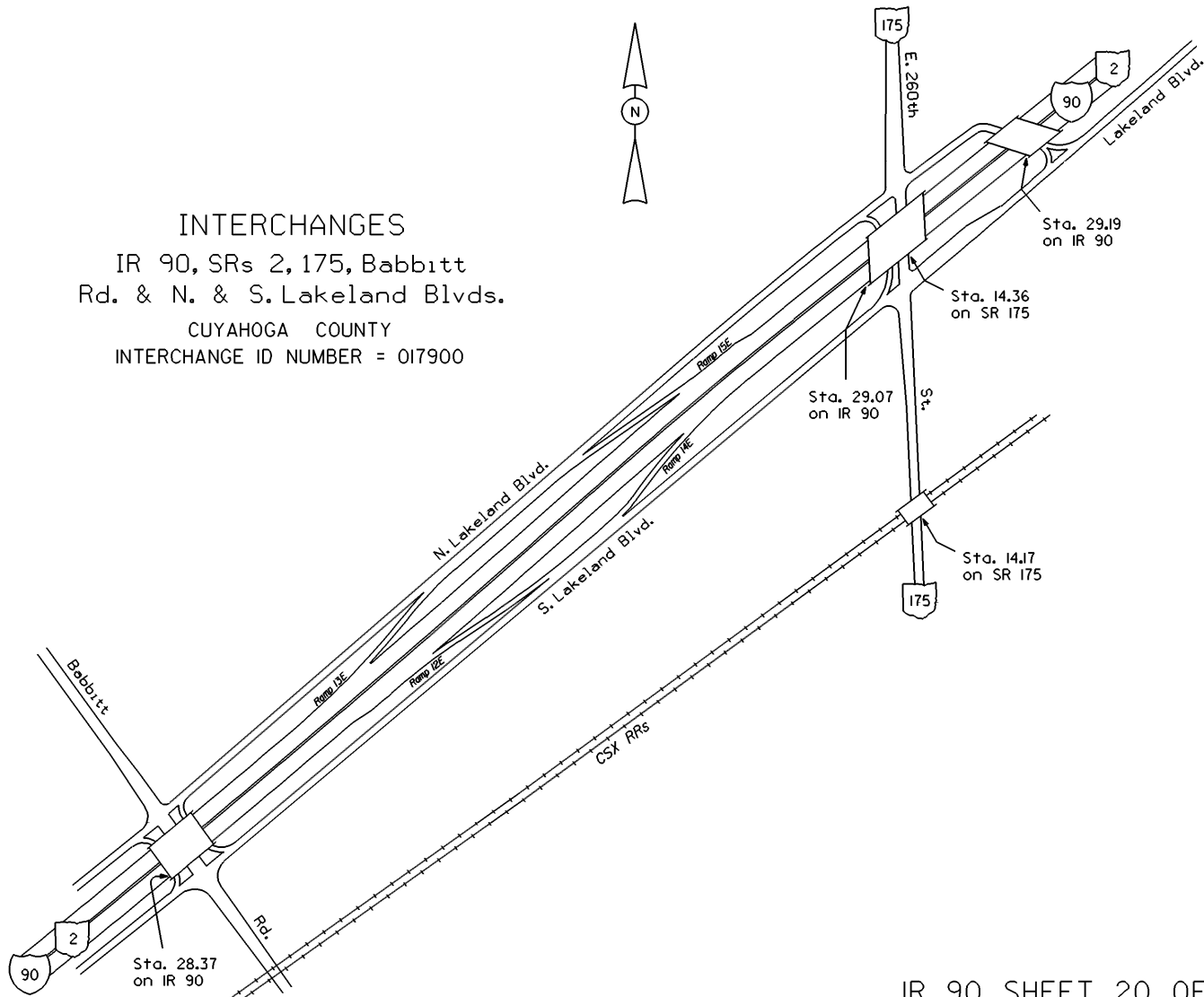
STREET NAME	
SECTION IDENTIFICATION	
SECTION LENGTH	
SURFACE TYPE & WIDTH	
BASE TYPE & WIDTH	
YEAR	
PROJECT NUMBER	

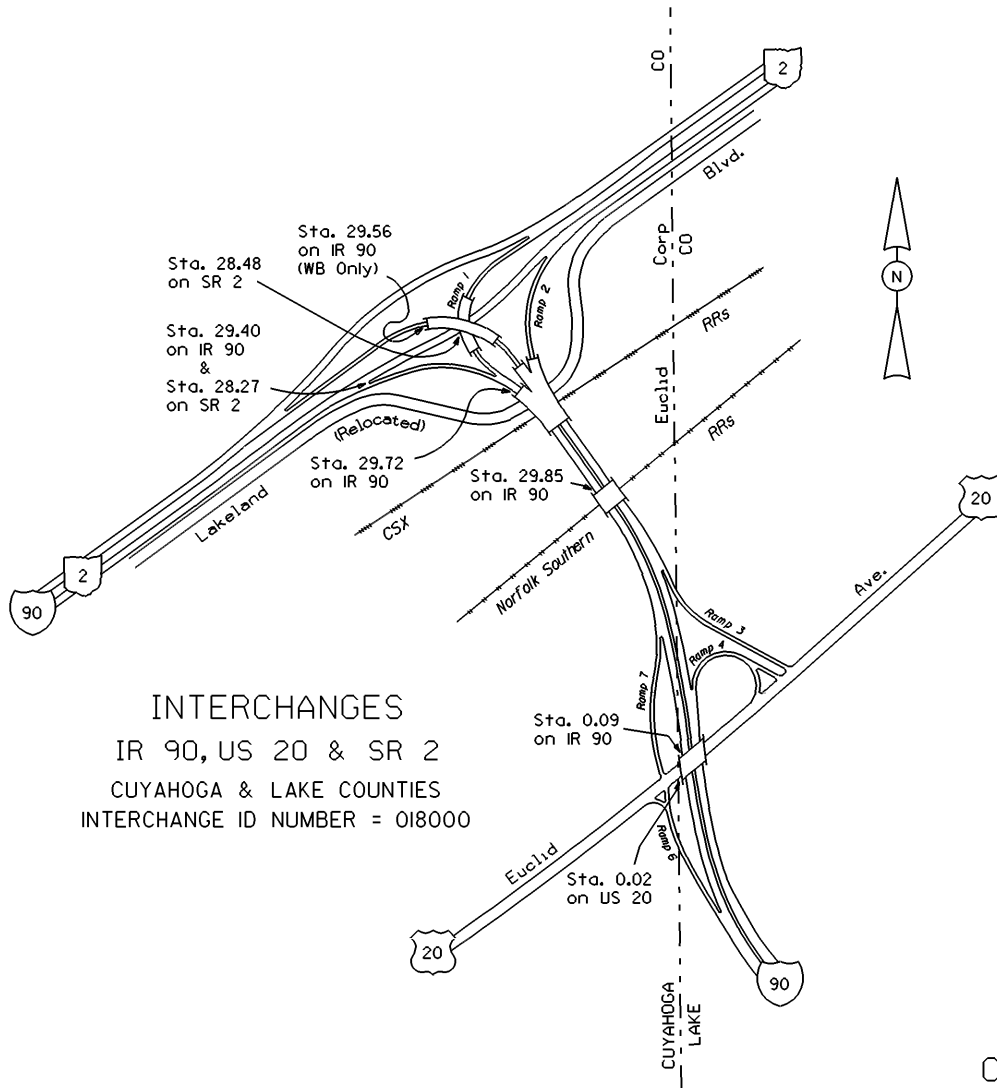


INTERCHANGES
IR 90, SR 2, E. 222nd St.
& N. & S. Lakeland Blvds.
CUYAHOGA COUNTY
INTERCHANGE ID NUMBER = 017800



INTERCHANGES
 IR 90, SRs 2, 175, Babbitt
 Rd. & N. & S. Lakeland Blvds.
 CUYAHOGA COUNTY
 INTERCHANGE ID NUMBER = 017900





INTERCHANGES
 IR 90, US 20 & SR 2
 CUYAHOGA & LAKE COUNTIES
 INTERCHANGE ID NUMBER = 018000

CUY IR 90 SHEET 20 OF 21
 CUY SR 2 SHEET 6 OF 6
 LAK IR 90 SHEET 1 OF 6
 LAK US 20 SHEET 1 OF 7

STATE OF OHIO - DEPARTMENT OF TRANSPORTATION
STATE ROUTE SECTIONS ON CONTINUOUS MILEAGE STATIONING

DISTRICT 12
COUNTY CUYAHOGA
ROUTE IR 90

STATE LOG MILES	185.92	186	30.20	30.40	30.60	30.80	31.00
COUNTY LOG MILES	30.00						

VISIBLE
FIXED
POINTS

DIRECTION OF SURVEY

Corp
CO
30.20 CO

Euclid
CUYAHOGA
LAKE

STREET NAME	Lakeland Freeway
SECTION IDENTIFICATION	29.67
SECTION LENGTH	0.53
SURFACE TYPE & WIDTH	G36'Δ G36'
BASE TYPE & WIDTH	P36'Δ P36'
YEAR	1990
PROJECT NUMBER	659

PERPETUATION

VISIBLE
FIXED
POINTS

Corp
CO
30.20 CO

Euclid
CUYAHOGA
LAKE

STREET NAME	Lakeland Freeway
SECTION IDENTIFICATION	29.67
SECTION LENGTH	0.53
SURFACE TYPE & WIDTH	G36'Δ G36'
BASE TYPE & WIDTH	P36'Δ P36'
YEAR	2002
PROJECT NUMBER	534

VISIBLE
FIXED
POINTS

STREET NAME	
SECTION IDENTIFICATION	
SECTION LENGTH	
SURFACE TYPE & WIDTH	
BASE TYPE & WIDTH	
YEAR	
PROJECT NUMBER	