

FED.AID DIST. NO.	STATE	FED.AID PROJECT YEAR	FISCAL YEAR
10	OHIO	611-A	1932

S.H. 51 SEC'S. G-F-H-I-J₂ & WATERVILLE SOUTH. TOLEDO-NAPOLEON ROAD. LUCAS COUNTY, OHIO.

STATE OF OHIO DEPARTMENT OF HIGHWAYS TOLEDO-NAPOLEON ROAD

S.H. NO 51 SEC. G-F-H-I-J₂-WATERVILLE
PET. NO. 6954

LUCAS COUNTY

PROVIDENCE & WATERVILLE TWP'S. & WATERVILLE VILLAGE
1930

PROCEEDINGS PASSED DEC. 3, 1838, AND RECORDED IN LUCAS COUNTY ROAD RECORDS VOL. 1, PAGE 50 (ROAD NO 39) ESTABLISHES THE LINE OF THE ROAD. (COMMISSIONERS JOURNAL VOL. 1, PAGE 33)
I HEREBY CERTIFY THAT I HAVE RE-RUN THE ORIGINAL CENTER LINE.

G. L. Sawyer
LUCAS COUNTY SURVEYOR

The Standard Specifications of the State of Ohio Department of Highways in force on date of contract will govern this improvement.

I hereby approve these plans and declare that the making of this improvement will require the closing to traffic of the highway and that detours will be provided as shown on the plan and estimate.

APPROVED
Date Dec. 2, 1930
G. L. Sawyer
Resident District Deputy Director

APPROVED
Date Dec 4 '30
John G. Fallis
Resident Division Deputy Director

APPROVED
Date 12-1-30
H. P. Chapman
Chief Engineer
Bureau of Construction

APPROVED
Date ---
Chief Engineer
Bureau of Maintenance

APPROVED
Date ---
Chief Engineer
Bureau of Bridges

APPROVED
Date 12-4-30
H. C. Roselig
Chief Engineer and First Asst. Director

APPROVED
Date 12-4-30
Robt. McSwain
Director of Highways

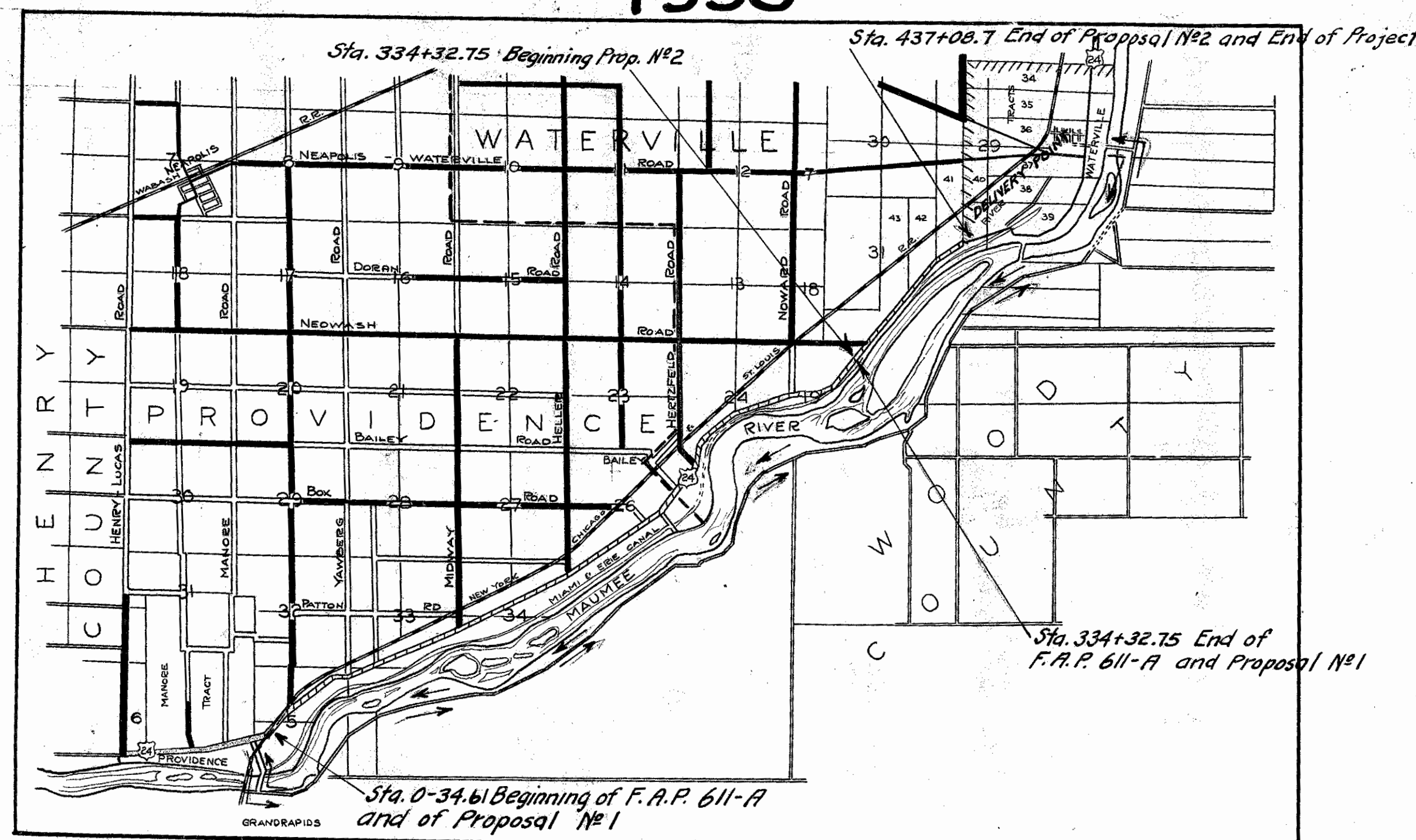
RECOMMENDED FOR APPROVAL
Date ---
District Engineer
Bureau of Public Roads

RECOMMENDED FOR APPROVAL
Date ---
Chief Engineer
Bureau of Public Roads

APPROVED
Date ---
Chief of Bureau

CONVENTIONAL SIGNS

STATE LINE	-----
COUNTY LINE	-----
TOWNSHIP LINE	-----
SECTION LINE	-----
PROPERTY LINE	-----
CENTER LINE	-----
CITY OR VILLAGE	-----
FENCE	-----
TELEPHONE OR TELEGRAPH	T T T T T
STEAM RAILROAD	-----
ELECTRIC LINE	-----
GUARD RAIL	-----
DRAIN PIPE - NEW	-----
DRAIN PIPE - OLD	-----
CEMENT PLANT	-----
STONE QUARRY	-----



We, the Commissioners of Lucas County hereby approve the plans and certify that the right of way 60 ft wide is available for the construction, maintenance and repair of the above highway.

Ray E. Davis
H. B. Farnsworth
J. J. Winter

Date Dec 4 / 1930
County Commissioners

LOCATION PLAN
SCALE OF MILES

PORTION TO BE IMPROVED 1/2
DETOURS SHOWN THUS
IMPROVED ROADS

SCALES
PLAN 1" = 50'
PROFILE (VERT) 1" = 5'
PROFILE (HOR) 1" = 50'
CROSS SECTIONS 1" = 5'

INDEX OF SHEETS
PROJECT - TRACINGS TITLE PAGE * 1
TYPICAL CROSS SECTION * 2
PLANS & PROFILE * 3 to * 20 Incl.
CROSS SECTIONS * 23 to * 38 Incl.
SPECIAL STRUCTURES * 39 to * 49 Incl.
SUMMARY * 50 to * 54 Incl.

Supplemental Prints of Structural Dwgs.
Dwg. No 300 and 305

CONSTRUCTION BUREAU
JUN 29 1955
GROUND PHOTOLAB

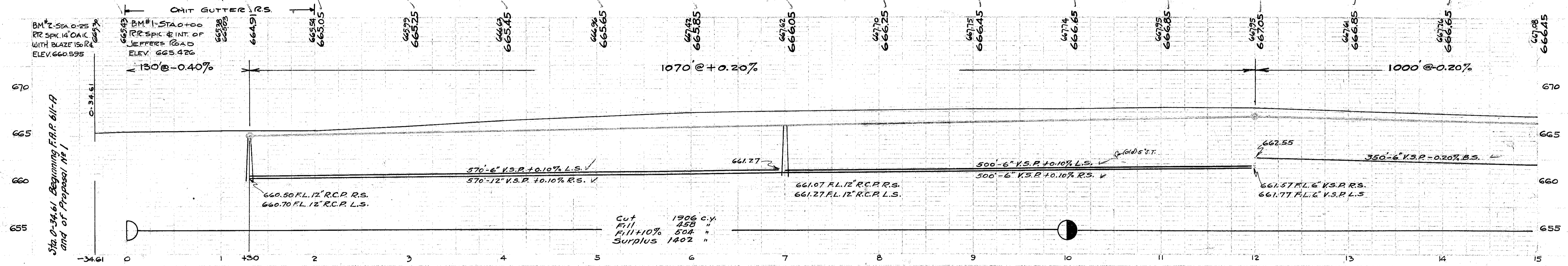
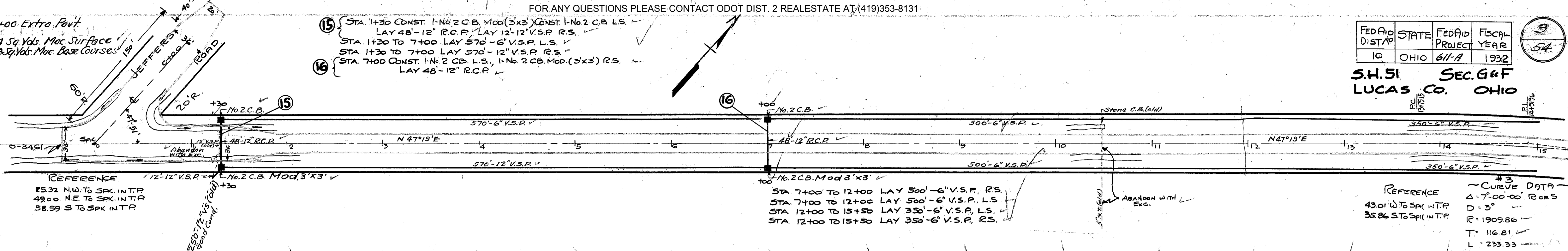
FED AID DIST NO	STATE	FED AID PROJECT	FISCAL YEAR
10	OHIO	611-A	1932

S.H. 51 SEC. G & F
LUCAS CO. OHIO

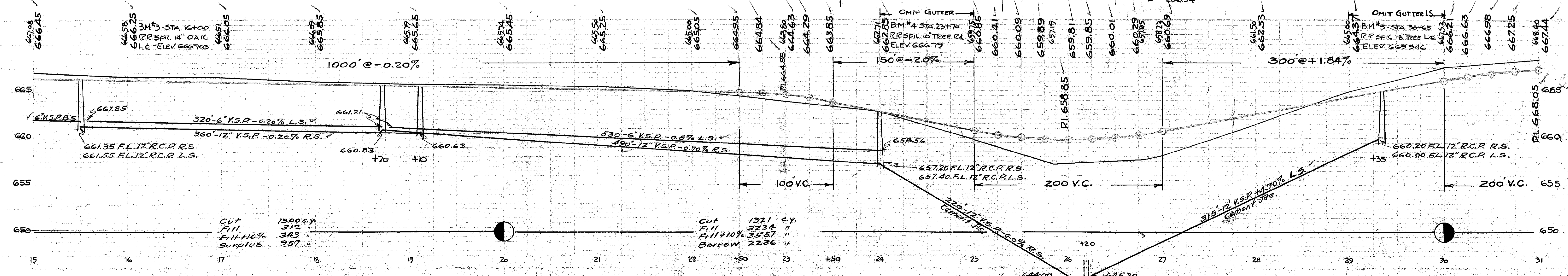
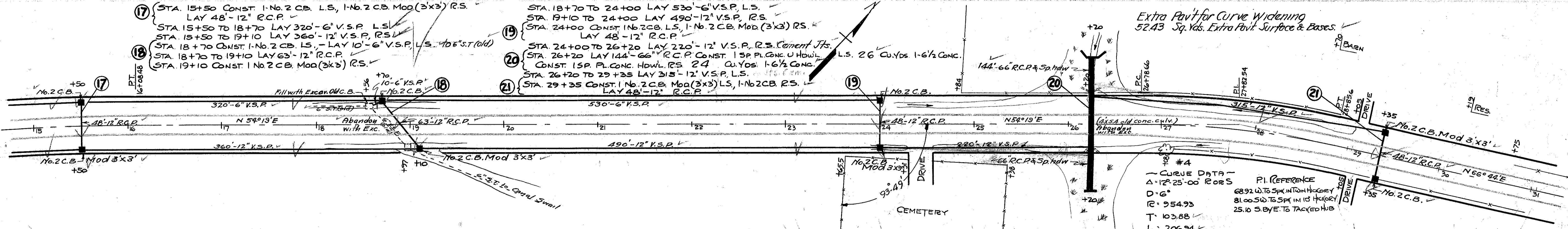
Sta 0+00 Extra Pavt
1049.32 Sq Yds. Mac. Surface
1067.58 Sq Yds. Mac. Base Courses

Sta 0-34.61 Beginning F.R.P. 611-A
and of Proposal No 1

- 15 STA 1+30 CONST. 1-No 2 C.B. Mod(3'x3') CONST 1-No 2 C.B. L.S.
LAY 48'-12" R.C.P. LAY 12'-12" V.S.P. R.S.
- 16 STA 1+30 TO 7+00 LAY 570'-6" V.S.P. L.S.
STA 7+00 CONST. 1-No 2 C.B. L.S., 1-No 2 C.B. Mod.(3'x3') R.S.
LAY 48'-12" R.C.P.



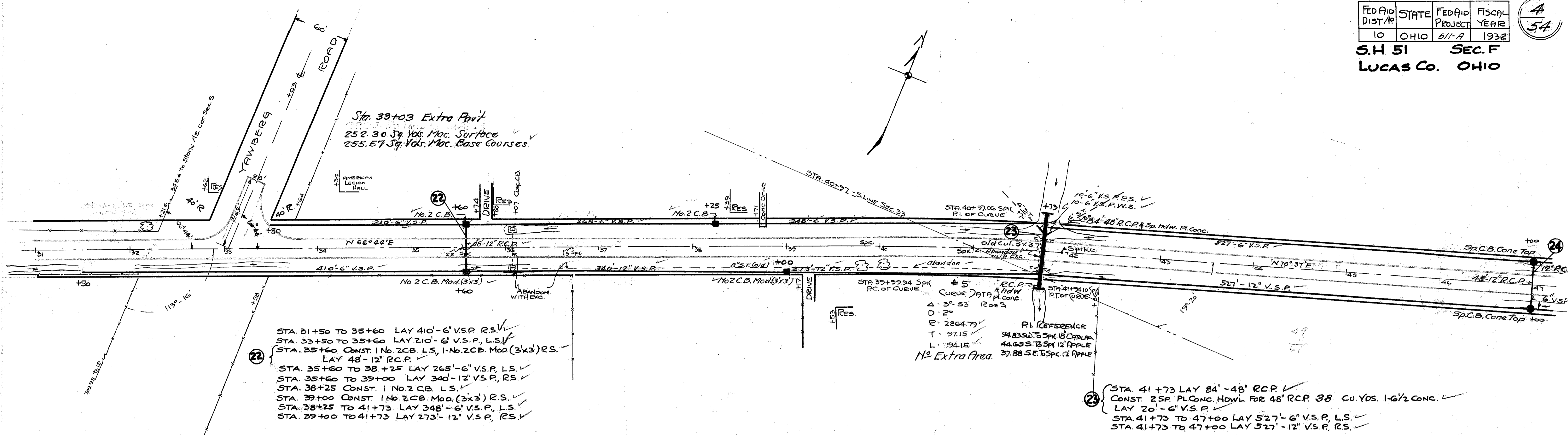
- 17 STA. 15+50 CONST. 1-No. 2 C.B. L.S., 1-No. 2 C.B. Mod(3'x3') R.S.
LAY 48'-12" R.C.P.
- 18 STA. 15+50 TO 18+70 LAY 320'-6" V.S.P. L.S.
STA. 15+50 TO 19+10 LAY 360'-12" V.S.P. R.S.
STA. 18+70 CONST. 1-No. 2 C.B. L.S., LAY 10'-6" V.S.P. L.S. +106'S.T(Old)
- 19 STA. 18+70 TO 24+00 LAY 530'-6" V.S.P. L.S.
STA. 19+10 TO 24+00 LAY 490'-12" V.S.P. R.S.
- 20 STA. 24+00 CONST. 1-No. 2 C.B. L.S., 1-No. 2 C.B. Mod(3'x3') R.S.
LAY 48'-12" R.C.P.
- 21 STA. 24+00 TO 26+20 LAY 220'-12" V.S.P. R.S. Cement Jts.
STA. 26+20 LAY 144'-66" R.C.P. CONST. 1 SP. PL. CONC. U HOWL.
CONST. 1 SP. PL. CONC. HOWL. RS 24 CU. YDS. 1-6 1/2 CONC.
- 22 STA. 26+20 TO 29+35 LAY 315'-12" V.S.P. L.S.
- 23 STA. 29+35 CONST. 1 No. 2 C.B. Mod(3'x3') L.S., 1-No. 2 C.B. R.S.
LAY 48'-12" R.C.P.



FED AID DIST #	STATE	FED AID PROJECT	FISCAL YEAR
10	OHIO	611-A	1932

4
54

S.H. 51 SEC. F
LUCAS CO. OHIO



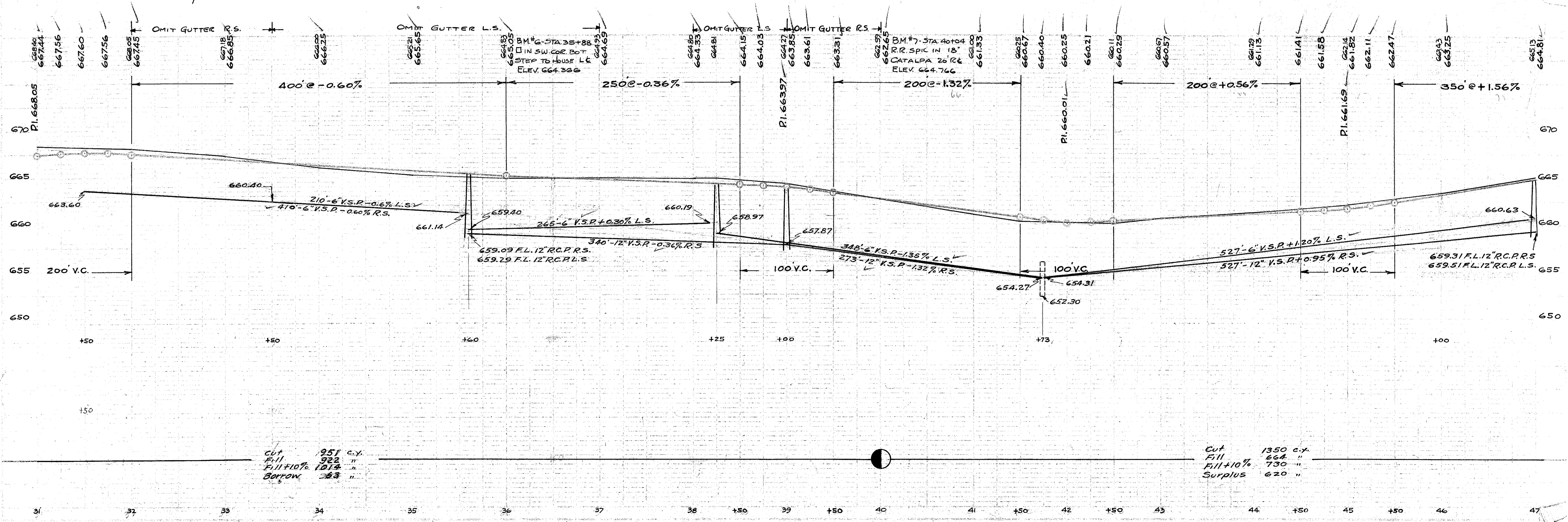
Sta. 33+03 Extra Point
252.30 Sq. Yds. Mac. Surface
255.57 Sq. Yds. Mac. Base Courses.

STA. 31+50 TO 35+60 LAY 410'-6" V.S.P. R.S.
 STA. 33+50 TO 35+60 LAY 210'-6" V.S.P. L.S.
 STA. 35+60 CONST. 1 No. 2 C.B. L.S., 1 No. 2 C.B. Mod. (3x3) R.S.
 LAY 48'-12" R.C.P.
 STA. 35+60 TO 38+25 LAY 265'-6" V.S.P. L.S.
 STA. 35+60 TO 39+00 LAY 340'-12" V.S.P. R.S.
 STA. 38+25 CONST. 1 No. 2 C.B. L.S.
 STA. 39+00 CONST. 1 No. 2 C.B. Mod. (3x3) R.S.
 STA. 38+25 TO 41+73 LAY 348'-6" V.S.P. L.S.
 STA. 39+00 TO 41+73 LAY 273'-12" V.S.P. R.S.

STA 39+00 Spk # 5
 R.C.P. 2' x 3' 7"
 Curve Data Pl. Conc.
 Δ = 3° 53' R of S
 D = 2°
 R = 2864.73'
 T = 97.15'
 L = 194.15'
 No Extra Area.

STA 41+73 Spk # 1
 R.C.P. 2' x 3' 7"
 Curve Data Pl. Conc.
 Δ = 3° 53' R of S
 D = 2°
 R = 2864.73'
 T = 97.15'
 L = 194.15'
 No Extra Area.

STA. 41+73 LAY 84'-48" R.C.P.
 CONST. 2 SP. PL. CONC. HOWL FOR 48" R.C.P. 38 CU. YDS. 1-6 1/2 CONC.
 LAY 20'-6" V.S.P.
 STA. 41+73 TO 47+00 LAY 527'-6" V.S.P. L.S.
 STA. 41+73 TO 47+00 LAY 527'-12" V.S.P. R.S.



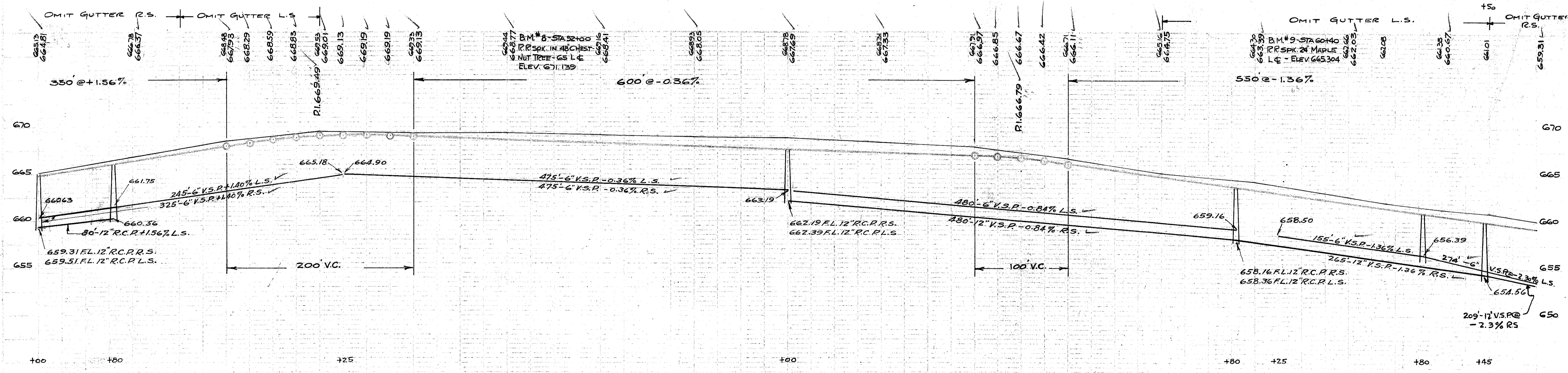
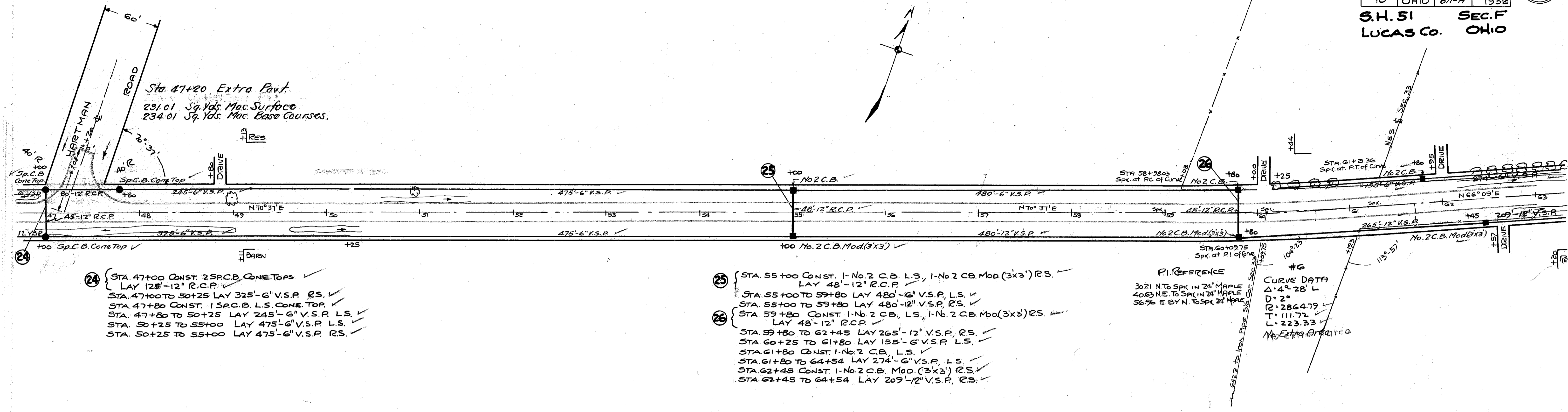
Cut 951 c.y.
 Fill 922 "
 Fill +10% 1013 "
 Borrow 323 "

Cut 1350 c.y.
 Fill 662 "
 Fill +10% 730 "
 Surplus 620 "

FED AID DIST NO	STATE	FED AID PROJECT	FISCAL YEAR
10	OHIO	611-A	1932

5
54

S.H. 51 SEC. F
LUCAS CO. OHIO



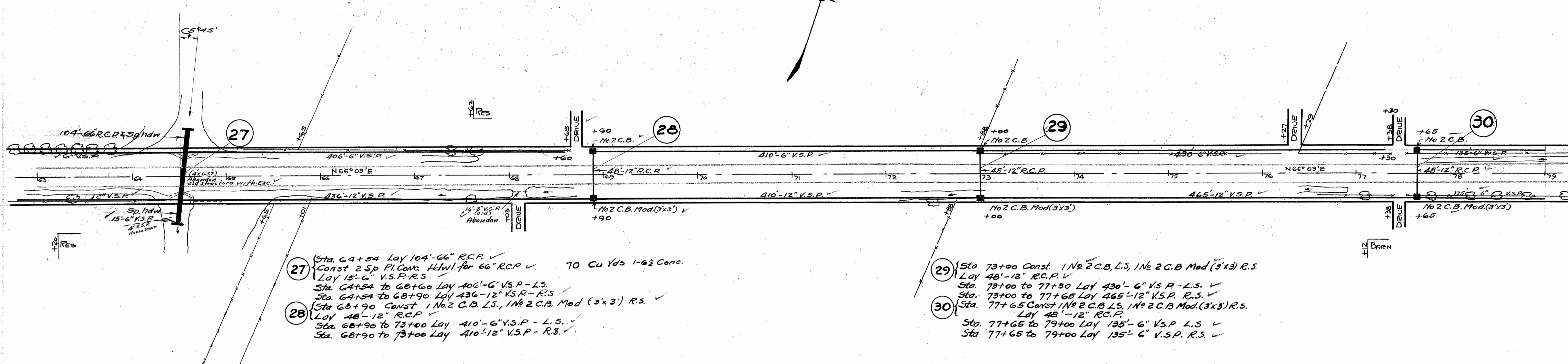
CUT	1858 C.Y.
FILL	172 C.Y.
FILL + 10%	189 C.Y.
SURPLUS	1669 C.Y.

47 48 49 50 51 52 53 54 55 56 57 58 59 60 61 62 63

FED AID DIST. #	STATE	FED AID PROJECT	FISCAL YEAR
10	OHIO	611-A	1932

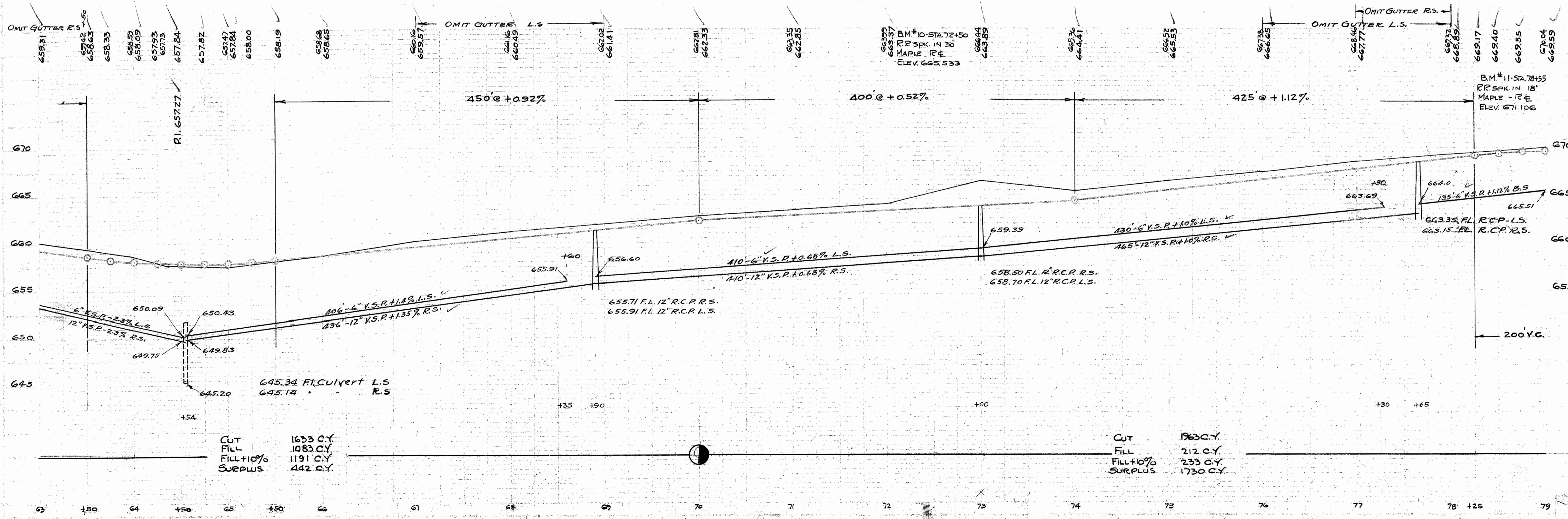
6
54

S.H. 51 SEC. F
LUCAS CO. OHIO



- 27 Sta. 64+54 Lay 104'-66" R.C.P. ✓
Const 2 Sp. Pl. Conc. Hdwl. for 66" R.C.P. ✓ 70 Cu Yds 1-6 1/2 Conc.
Lay 15'-6" V.S.P.-R.S.
- 28 Sta. 64+54 to 68+90 Lay 406'-6" V.S.P.-L.S. ✓
Sta. 64+54 to 68+90 Lay 436'-12" V.S.P.-R.S. ✓
Sta. 68+90 Const. 1 No. 2 C.B. L.S., 1 No. 2 C.B. Mod. (3'x3') R.S. ✓
Lay 48'-12" R.C.P. ✓
Sta. 68+90 to 73+00 Lay 410'-6" V.S.P.-L.S. ✓
Sta. 68+90 to 73+00 Lay 410'-12" V.S.P.-R.S. ✓

- 29 Sta. 73+00 Const. 1 No. 2 C.B. L.S., 1 No. 2 C.B. Mod. (3'x3') R.S. ✓
Lay 48'-12" R.C.P. ✓
- 30 Sta. 73+00 to 77+65 Lay 430'-6" V.S.P.-L.S. ✓
Sta. 73+00 to 77+65 Lay 465'-12" V.S.P.-R.S. ✓
Sta. 77+65 Const. 1 No. 2 C.B. L.S., 1 No. 2 C.B. Mod. (3'x3') R.S. ✓
Lay 48'-12" R.C.P. ✓
Sta. 77+65 to 79+00 Lay 135'-6" V.S.P.-L.S. ✓
Sta. 77+65 to 79+00 Lay 135'-6" V.S.P.-R.S. ✓



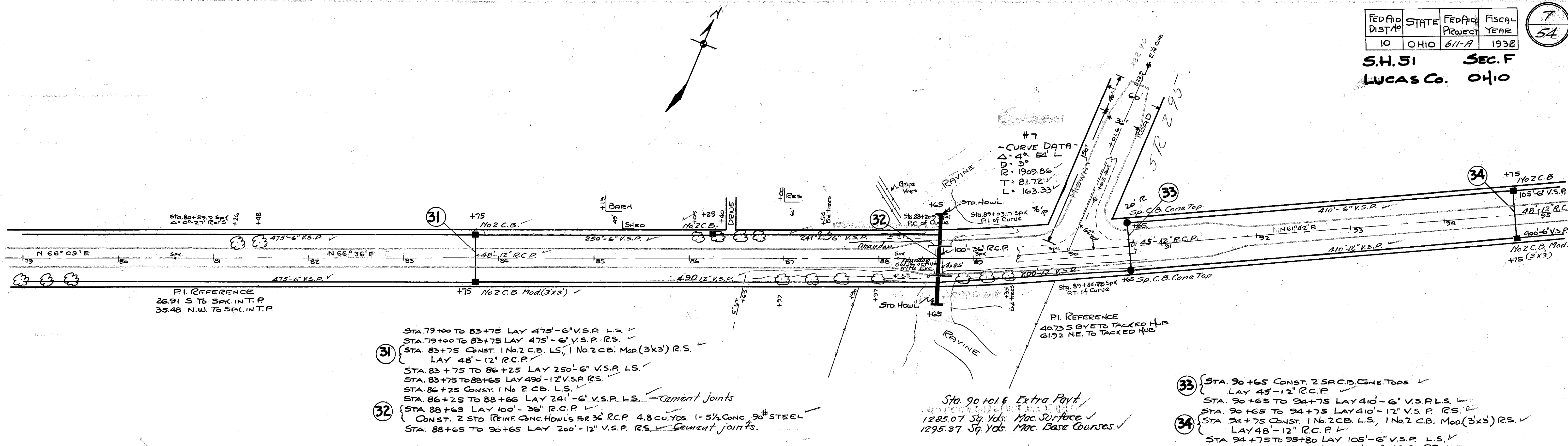
CUT 1633 C.Y.
FILL 1083 C.Y.
FILL+10% 1191 C.Y.
SURPLUS 442 C.Y.

CUT 1963 C.Y.
FILL 212 C.Y.
FILL+10% 233 C.Y.
SURPLUS 1730 C.Y.

FED AID DIST. NO.	STATE	FED AID PROJECT	FISCAL YEAR
10	OHIO	611-A	1938

7
54

S.H. 51 SEC. F
LUCAS CO. OHIO

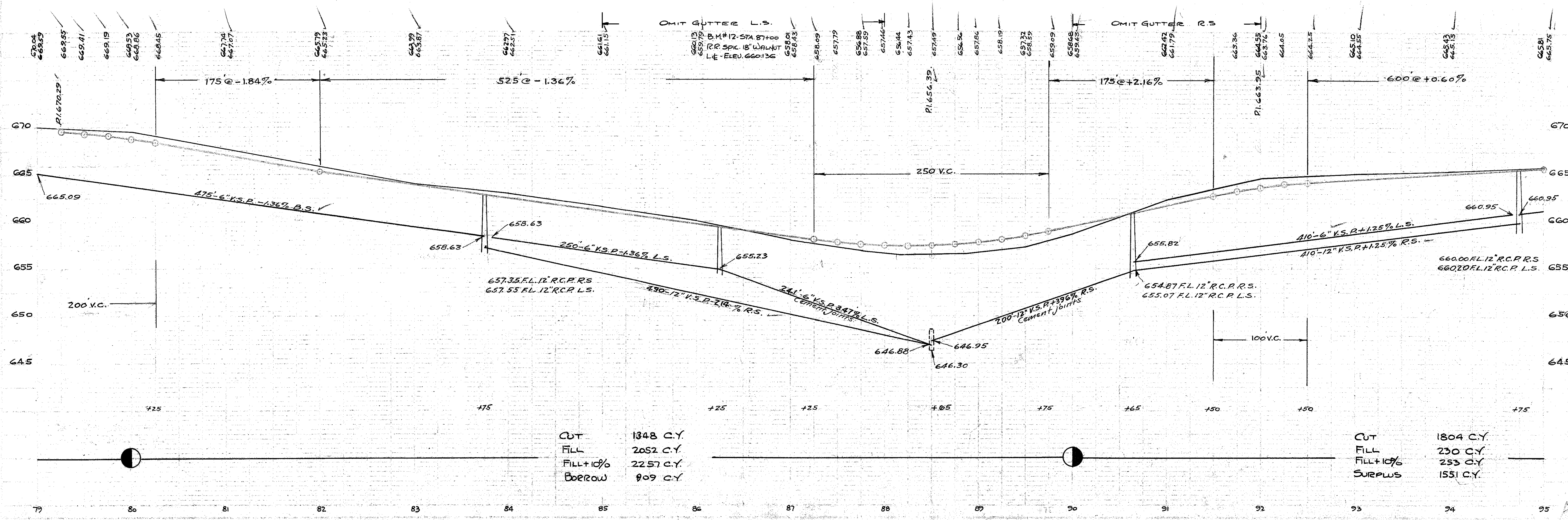


PI. REFERENCE
26.91 S TO SPK. INT. P.
35.48 N.W. TO SPK. INT. P.

- 31 STA. 79+00 TO 83+75 LAY 475'-6" V.S.P. L.S.
STA. 79+00 TO 83+75 LAY 475'-6" V.S.P. R.S.
STA. 83+75 CONST. 1 No. 2 C.B. L.S., 1 No. 2 C.B. Mod. (3'x3') R.S.
LAY 48'-12" R.C.P.
- 32 STA. 83+75 TO 86+25 LAY 250'-6" V.S.P. L.S.
STA. 83+75 TO 88+65 LAY 490'-12" V.S.P. R.S.
STA. 86+25 CONST. 1 No. 2 C.B. L.S.
STA. 86+25 TO 88+66 LAY 241'-6" V.S.P. L.S. Cement joints
STA. 88+65 LAY 100'-36" R.C.P.
CONST. 2 STD. REIN. CONC. HOWLS FOR 36" R.C.P. 4.8 CU. YDS. 1-1/2" CONC., 90# STEEL
STA. 88+65 TO 90+65 LAY 200'-12" V.S.P. R.S. Cement joints.

Sta. 90 to 9 Extra Pavt.
1285.07 Sq. Yds. Mac. Surface
1295.37 Sq. Yds. Mac. Base Courses.

- 33 STA. 90+65 CONST. 2 SP. C.B. CONE TOPS
LAY 45'-12" R.C.P.
- 34 STA. 90+65 TO 94+75 LAY 410'-6" V.S.P. L.S.
STA. 90+65 TO 94+75 LAY 410'-12" V.S.P. R.S.
STA. 94+75 CONST. 1 No. 2 C.B. L.S., 1 No. 2 C.B. Mod. (3'x3') R.S.
LAY 48'-12" R.C.P.
STA. 94+75 TO 98+80 LAY 105'-6" V.S.P. L.S.
STA. 94+75 TO 98+75 LAY 400'-6" V.S.P. R.S.



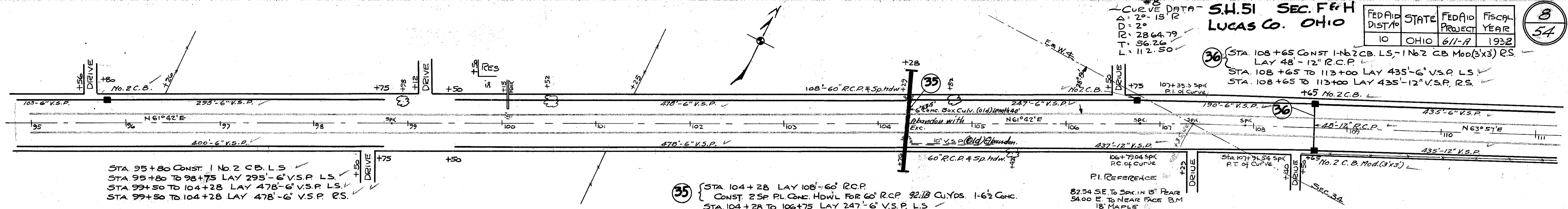
CUT 1348 C.Y.
FILL 2052 C.Y.
FILL+10% 2257 C.Y.
BORROW 909 C.Y.

CUT 1804 C.Y.
FILL 230 C.Y.
FILL+10% 253 C.Y.
SURPLUS 1551 C.Y.

#8
 CURVE DATA - S.H. 51 SEC. F&H
 LUCAS CO. OHIO

FED AID DIST#	STATE	FED AID PROJECT	FISCAL YEAR
10	OHIO	611-A	1932

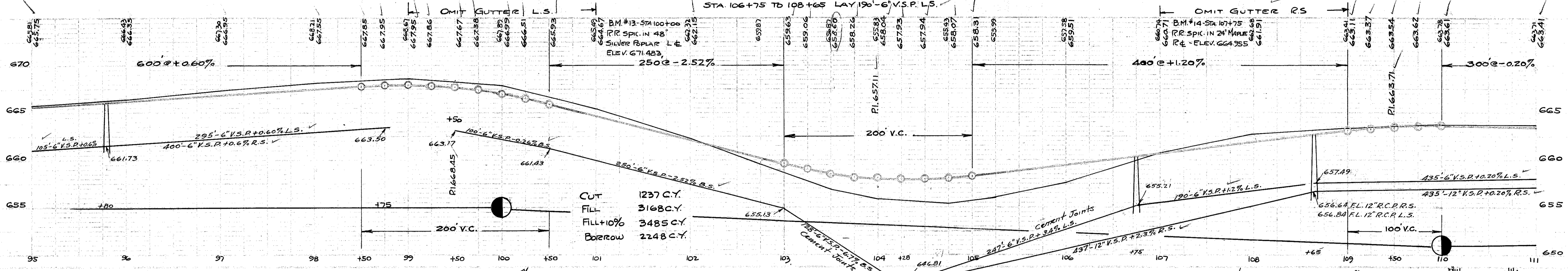
8
54



STA 95+80 CONST. 1 No. 2 C.B. L.S.
 STA 95+80 TO 98+75 LAY 295'-6" V.S.P. L.S.
 STA 99+50 TO 104+28 LAY 478'-6" V.S.P. L.S.
 STA 99+50 TO 104+28 LAY 478'-6" V.S.P. R.S.

(35) STA 104+28 LAY 108'-6" R.C.P.
 CONST. 2 SP. PL. CONC. HDWL FOR 60' R.C.P. 92.13 CU. YDS. 1-6 1/2 CONC.
 STA 104+28 TO 106+75 LAY 247'-6" V.S.P. L.S.
 STA 104+28 TO 108+65 LAY 437'-12" V.S.P. R.S.
 STA 106+75 CONST. 1-NO. 2 C.B. L.S.
 STA 106+75 TO 108+65 LAY 190'-6" V.S.P. L.S.

PI. REFERENCE
 82.54 SE. TO SPIC. IN 5' REAR
 54.00 E. TO NEAR FACE B.M.
 18' MAPLE
 89.11 SW. TO SPIC. IN 18' OAK

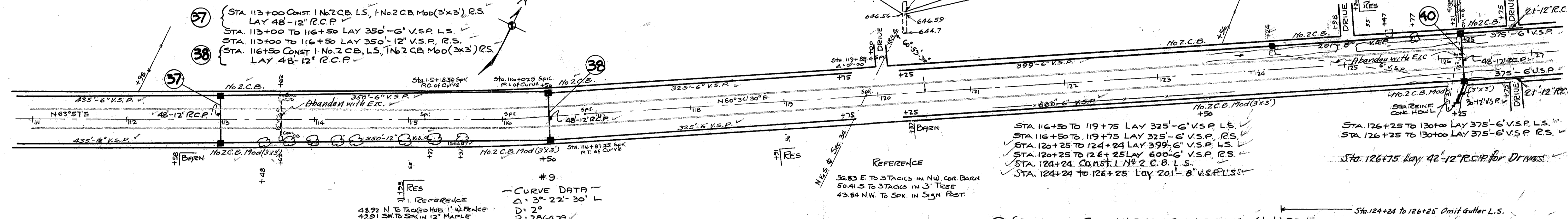


CUT 1237 C.Y.
 FILL 3168 C.Y.
 FILL+10% 3485 C.Y.
 BORROW 2248 C.Y.

(37) STA 113+00 CONST. 1 No. 2 C.B. L.S., 1-NO. 2 C.B. MOD (3'x3') R.S.
 LAY 48'-12" R.C.P.
 STA 113+00 TO 116+50 LAY 350'-6" V.S.P. L.S.
 STA 113+00 TO 116+50 LAY 350'-12" V.S.P. R.S.
 (38) STA 116+50 CONST. 1-NO. 2 C.B. L.S., 1-NO. 2 C.B. MOD (3'x3') R.S.
 LAY 48'-12" R.C.P.

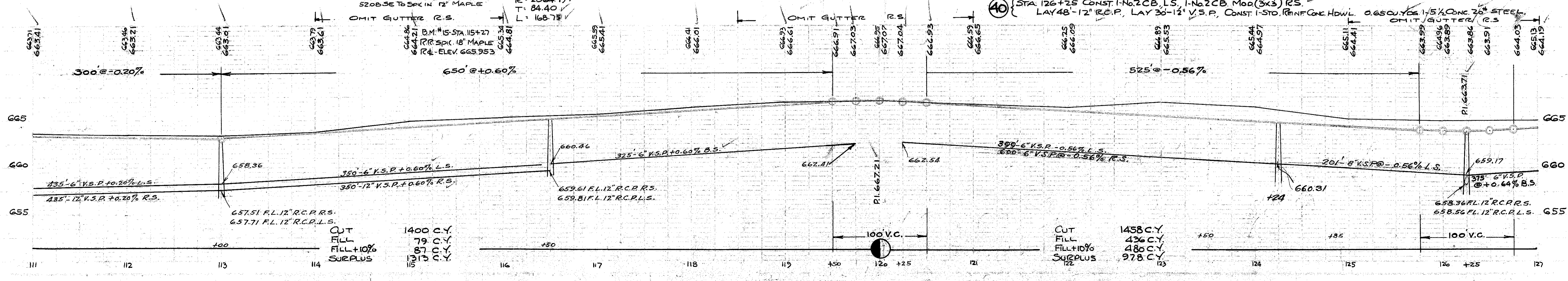
STA 116+50 TO 119+75 LAY 325'-6" V.S.P. L.S.
 STA 116+50 TO 119+75 LAY 325'-6" V.S.P. R.S.
 STA 120+25 TO 124+24 LAY 399'-6" V.S.P. L.S.
 STA 120+25 TO 126+25 LAY 600'-6" V.S.P. R.S.
 STA 124+24 CONST. 1-NO. 2 C.B. L.S.
 STA 124+24 TO 126+25 LAY 201'-6" V.S.P. L.S.

STA 126+25 TO 130+00 LAY 375'-6" V.S.P. L.S.
 STA 126+25 TO 130+00 LAY 375'-6" V.S.P. R.S.



#9
 CURVE DATA
 Δ: 3° 22' 30" L
 D: 2°
 R: 2864.79'
 T: 84.40'
 L: 168.78'

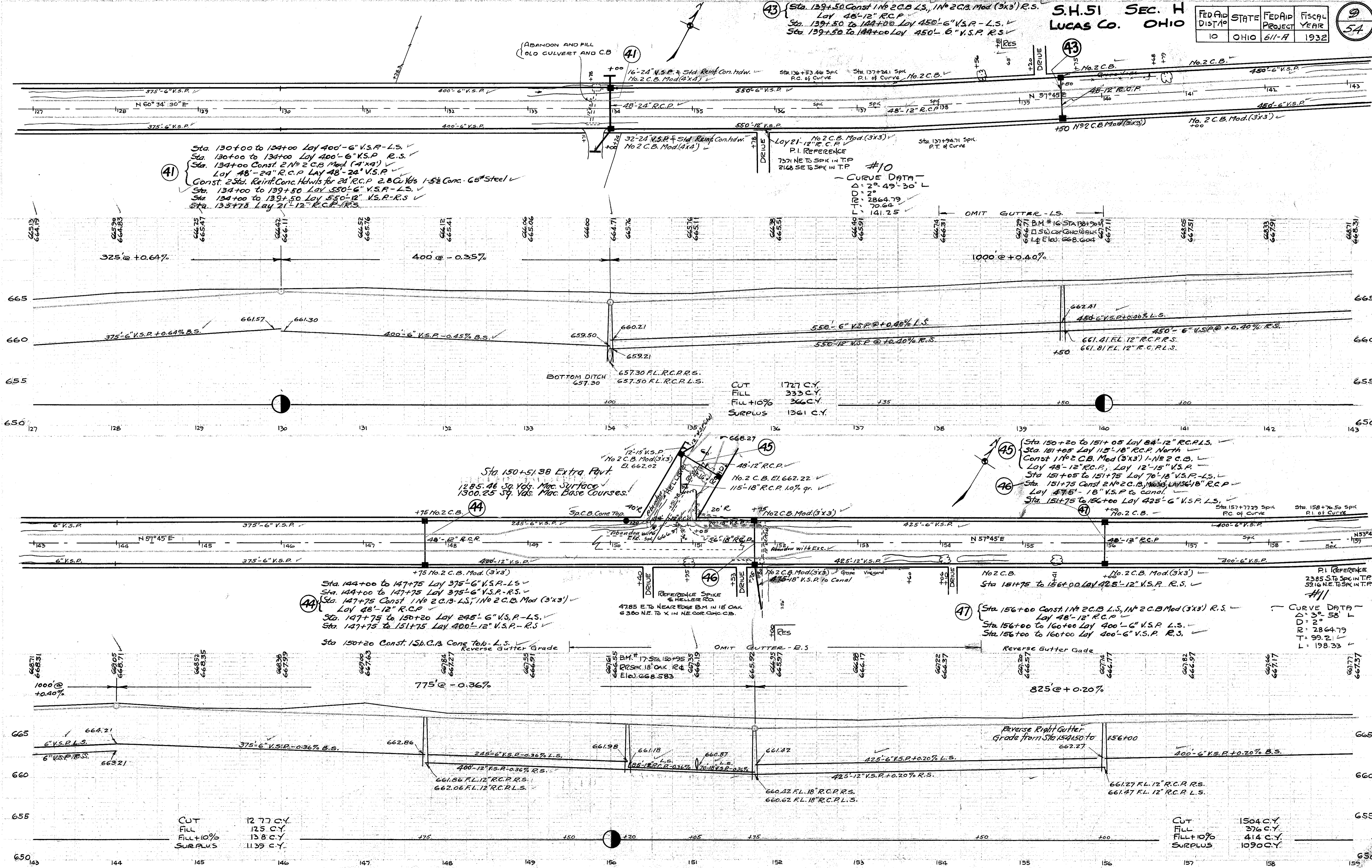
(40) STA 126+25 CONST. 1-NO. 2 C.B. L.S., 1-NO. 2 C.B. MOD (3'x3') R.S.
 LAY 48'-12" R.C.P., LAY 30'-12" V.S.P., CONST. 1-STD. REINF. CONC. HDWL. 0.65 CU. YDS. 1 1/2" CONC. 30" STEEL.
 OMIT GUTTER R.S.



CUT 1400 C.Y.
 FILL 79 C.Y.
 FILL+10% 87 C.Y.
 SURPLUS 1313 C.Y.

CUT 1458 C.Y.
 FILL 436 C.Y.
 FILL+10% 480 C.Y.
 SURPLUS 978 C.Y.

FED AID DIST NO	STATE	FED AID PROJECT	FISCAL YEAR
10	OHIO	611-A	1932



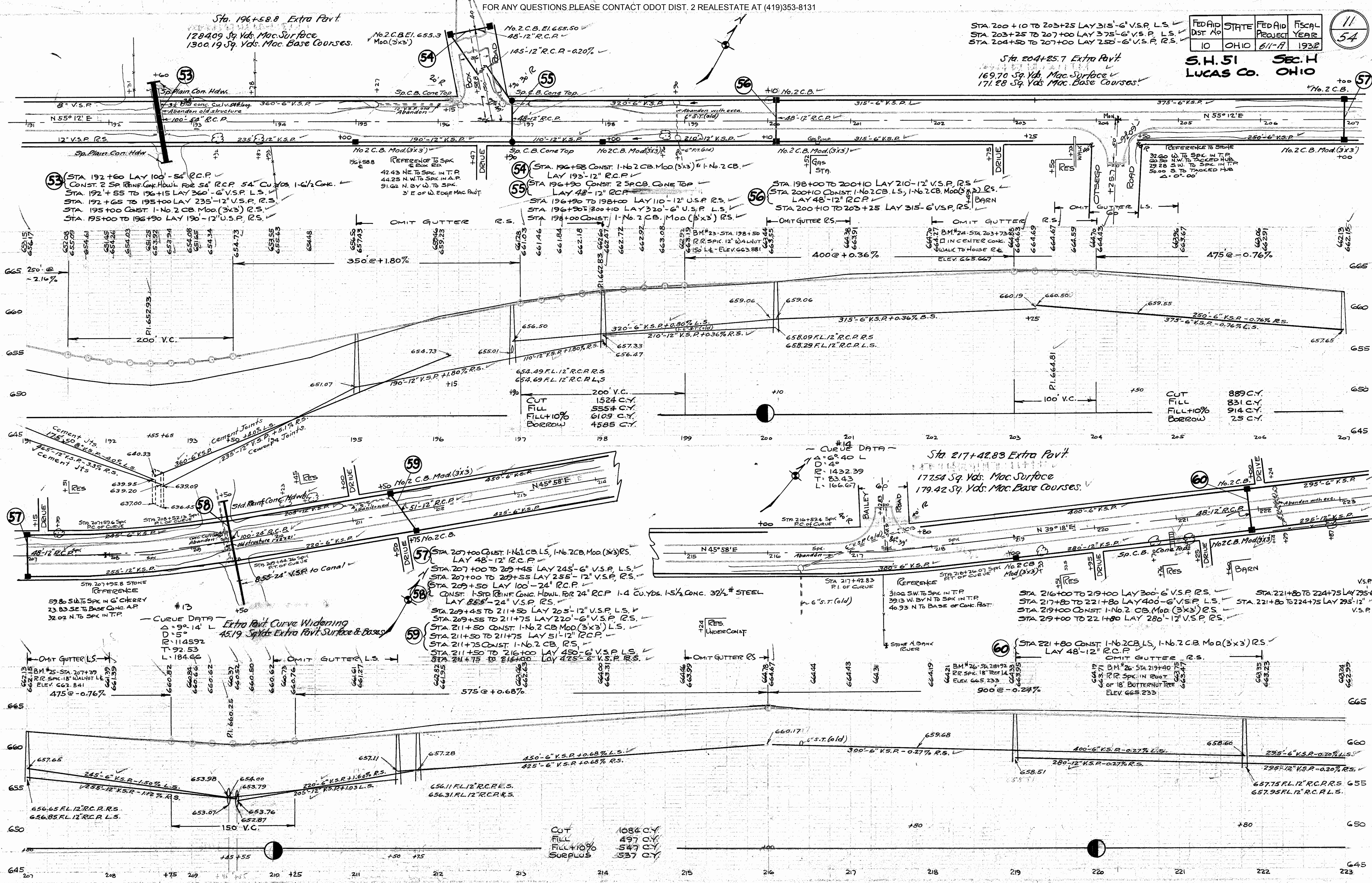
FED AID DIST. NO	STATE	FED AID PROJECT	FISCAL YEAR
10	OHIO	611-A	193E

11
54

Sta. 196+58.8 Extra Pavt.
1284.09 Sq Yds. Mac. Surface
1300.19 Sq Yds. Mac. Base Courses.

Sta. 204+25.7 Extra Pavt.
169.70 Sq Yds. Mac. Surface
171.28 Sq Yds. Mac. Base Courses.

S.H. 51 Sec. H
LUCAS CO. OHIO



53 STA 192+60 LAY 100'-54" R.C.P.
CONST. 2 SP REINF. CONC. HDWL FOR 54" R.C.P. 54" CU. YDS. 1-6 1/2 CONC.
STA. 192+55 TO 196+15 LAY 360'-6" V.S.P. L.S.
STA. 192+65 TO 195+00 LAY 235'-12" V.S.P. R.S.
STA. 195+00 CONST. 1-NO. 2 C.B. MOD. (3X3) R.S.
STA. 195+00 TO 196+90 LAY 190'-12" U.S.P. R.S.

54 STA. 196+58 CONST. 1-NO. 2 C.B. MOD. (3X3) & 1-NO. 2 C.B. LAY 193'-12" R.C.P.
55 STA 196+90 CONST. 2 SPCB CONE TOP LAY 48'-12" R.C.P.
STA 196+90 TO 198+00 LAY 110'-12" U.S.P. R.S.
STA 196+90 TO 200+10 LAY 320'-6" U.S.P. L.S.
STA 198+00 CONST. 1-NO. 2 C.B. MOD. (3X3) R.S.

56 STA 198+00 TO 200+10 LAY 210'-12" V.S.P. R.S.
STA 200+10 CONST. 1-NO. 2 C.B. L.S., 1-NO. 2 C.B. MOD. (3X3) R.S.
LAY 48'-12" R.C.P.
STA 200+10 TO 203+25 LAY 315'-6" V.S.P. R.S.

57 STA 207+00 CONST. 1-NO. 1 C.B. L.S., 1-NO. 2 C.B. MOD. (3X3) R.S. LAY 48'-12" R.C.P.
58 STA 207+00 TO 209+45 LAY 245'-6" V.S.P. L.S.
STA 207+00 TO 209+55 LAY 255'-12" V.S.P. R.S.
STA 209+50 LAY 100'-24" R.C.P.
CONST. 1-SPD REINF. CONC. HDWL FOR 24" R.C.P. 1-4 CU. YDS. 1-5 1/2 CONC. 3/2" # STEEL LAY 85'-24" V.S.P. R.S.
59 STA 209+45 TO 211+50 LAY 205'-12" V.S.P. L.S. & STA 209+55 TO 211+75 LAY 220'-6" V.S.P. R.S.
STA 211+50 CONST. 1-NO. 2 C.B. MOD. (3X3) L.S.
STA 211+75 CONST. 1-NO. 2 C.B. R.S.
STA 211+50 TO 216+00 LAY 480'-6" V.S.P. L.S.
STA 211+75 TO 216+00 LAY 425'-6" V.S.P. R.S.

Sta. 217+42.83 Extra Pavt.
177.54 Sq Yds. Mac. Surface
179.42 Sq Yds. Mac. Base Courses.

60 STA 216+00 TO 219+00 LAY 300'-6" V.S.P. R.S.
STA 217+80 TO 221+80 LAY 400'-6" V.S.P. L.S.
STA 219+00 CONST. 1-NO. 2 C.B. MOD. (3X3) R.S.
STA 219+00 TO 221+80 LAY 280'-12" V.S.P. R.S.
STA 221+80 CONST. 1-NO. 2 C.B. L.S., 1-NO. 2 C.B. MOD. (3X3) R.S. LAY 48'-12" R.C.P.

CUT	1084 C.Y.
FILL	497 C.Y.
FILL+10%	547 C.Y.
SURPLUS	537 C.Y.

CUT	889 C.Y.
FILL	831 C.Y.
FILL+10%	914 C.Y.
BORROW	25 C.Y.

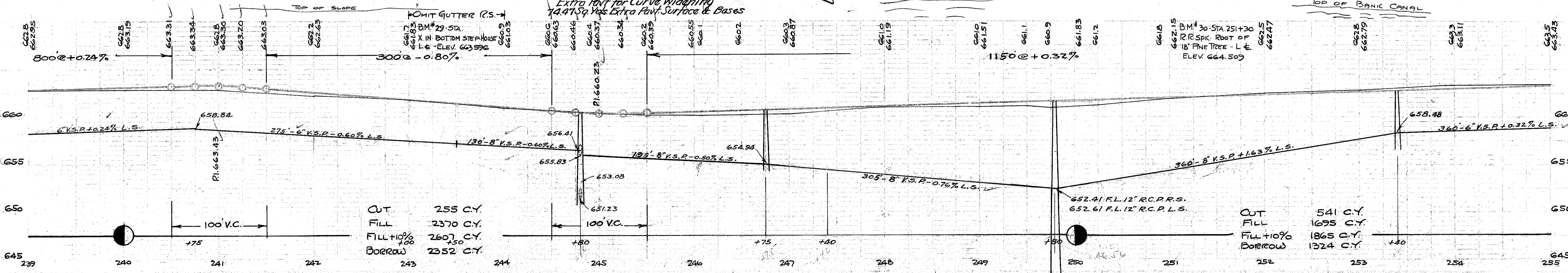
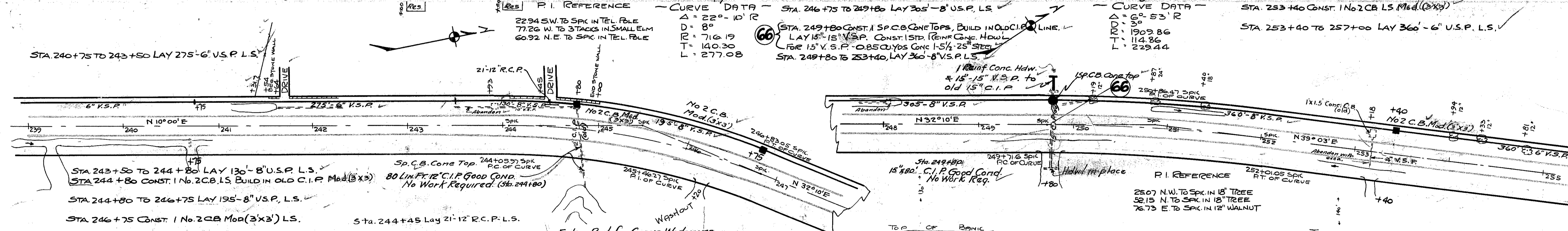
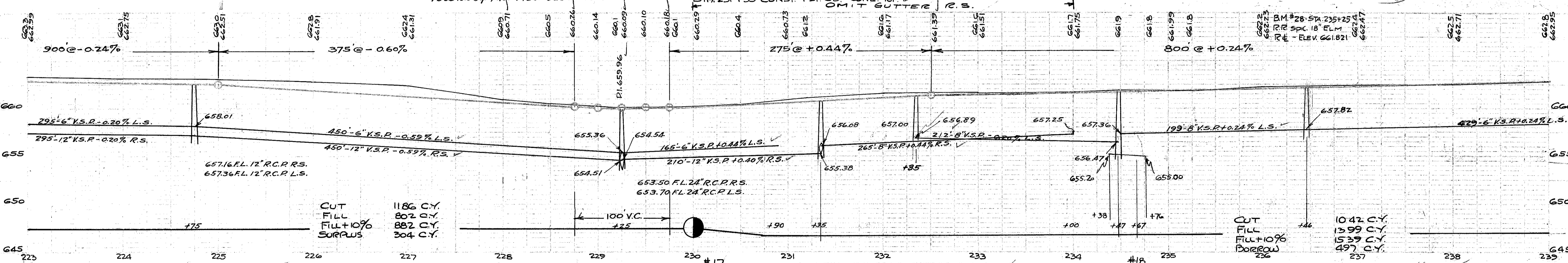
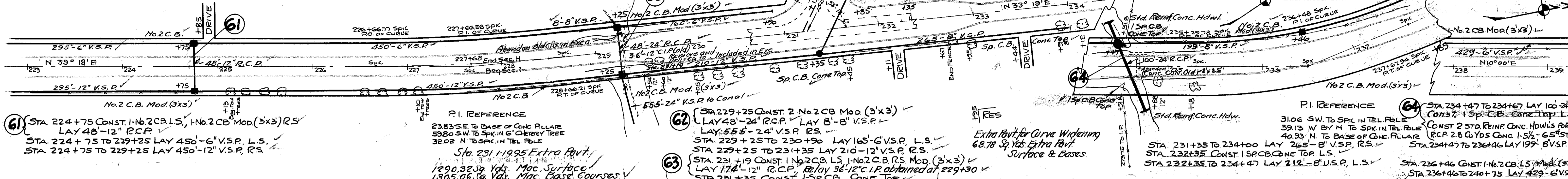
S.H.51 Sec. I
LUCAS Co. OHIO

FED AID DIST DIVISION	STATE	FED AID PROJECT	FISCAL YEAR
10	OHIO	611-A	1932

112
54

#15
CURVE DATA
D = 50'
R = 1909.86
T = 99.81
L = 199.44

#16
CURVE DATA
D = 232.19'
R = 118.22
T = 118.22
L = 233.16



FOR ANY QUESTIONS PLEASE CONTACT ODOT DIST. 2 REALSTATE AT (419)353-8131

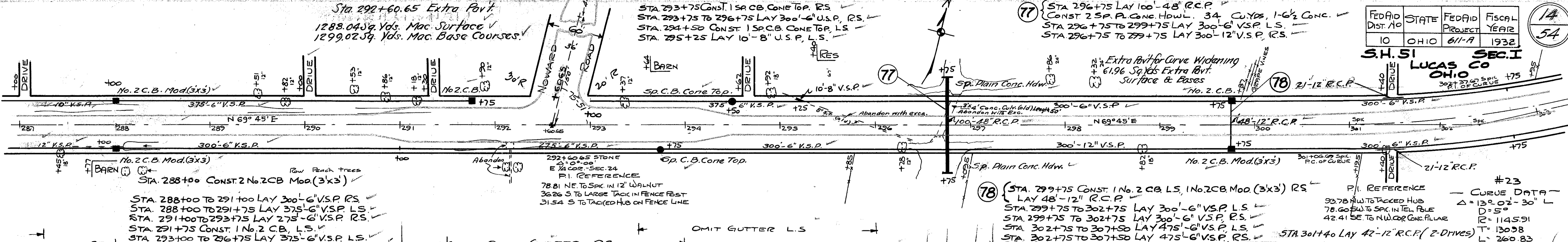
FED AID DIST. NO	STATE	FED AID PROJECT	FISCAL YEAR
10	OHIO	611-A	1932

S.H. 51
LUCAS CO
OHIO

Sta 292+60.65 Extra Pavt.
1288.04 Sq Yds. Mac. Surface
1299.02 Sq Yds. Mac. Base Courses

STA 293+75 CONST. 1 SP. CB. CONE TOP, RS
STA 293+75 TO 296+75 LAY 300'-6" V.S.P. L.S.
STA 294+50 CONST. 1 SP. CB. CONE TOP, LS
STA 295+25 LAY 10'-8" V.S.P. L.S.

77 STA 296+75 LAY 100'-48" R.C.P.
CONST. 2 SP. P. CONE HOWL. 34 CU. YDS. 1-6 1/2 CONC.
STA 296+75 TO 299+75 LAY 300'-6" V.S.P. L.S.
STA 296+75 TO 299+75 LAY 300'-12" V.S.P. RS.



STA 288+00 CONST. 2 No. 2 CB Mod. (3x3)
STA 288+00 TO 291+00 LAY 300'-6" V.S.P. RS
STA 288+00 TO 291+75 LAY 375'-6" V.S.P. L.S.
STA 291+00 TO 293+75 LAY 275'-6" V.S.P. RS
STA 291+75 CONST. 1 No. 2 C.B. L.S.
STA 293+00 TO 296+75 LAY 375'-6" V.S.P. L.S.

78 STA 299+75 CONST. 1 No. 2 CB L.S., 1 No. 2 CB Mod. (3x3) RS
LAY 48'-12" R.C.P.
STA 299+75 TO 302+75 LAY 300'-6" V.S.P. L.S.
STA 299+75 TO 302+75 LAY 300'-6" V.S.P. RS
STA 302+75 TO 307+50 LAY 475'-6" V.S.P. L.S.
STA 302+75 TO 307+50 LAY 475'-6" V.S.P. RS

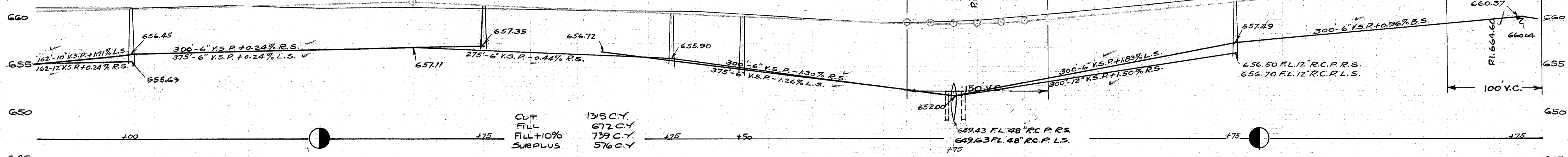
PI REFERENCE
93.78 W. TO TAPPED HUB
78.60 W. TO SPK IN TEL POLE
42.41 SE TO N.W. COR CONC. PILLAR

CURVE DATA
Δ = 13° 02' 30" L
D = 5°
R = 1145.91
T = 130.98
L = 260.83

462 @ +0.24%

525 @ -0.44%

425 @ +0.96%



CUT 1315 C.Y.
FILL 672 C.Y.
FILL+10% 739 C.Y.
SURPLUS 576 C.Y.

649.43 FL. 48" R.C.P. RS
649.63 FL. 48" R.C.P. LS

79 STA 306+85 LAY 15'-8" V.S.P. L.S.
STA 307+50 CONST. 1 No. 2 CB L.S., 1 No. 2 CB Mod. (3x3) RS.
LAY 48'-12" R.C.P.
STA 307+50 TO 313+65 LAY 615'-6" V.S.P. L.S.
STA 307+50 TO 313+65 LAY 615'-12" V.S.P. RS.

Extra Pavt. for Curve Widening
64.27 Sq Yds Extra Pavt. Surface & Bases

#24
CURVE DATA
Δ = 13° 34' L
D = 5°
R = 1145.91
T = 136.30
L = 271.33

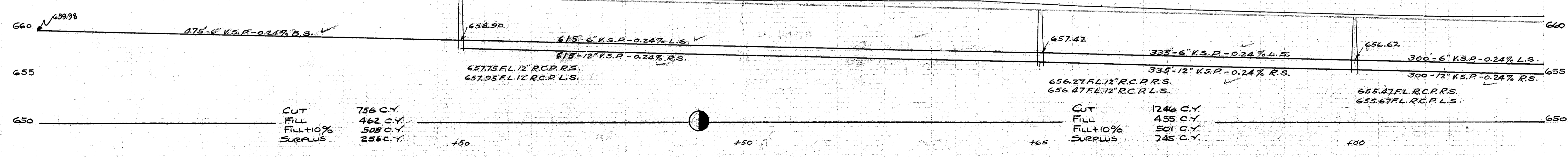
81 STA 313+65 CONST. 1 No. 2 CB L.S., 1 No. 2 CB Mod. (3x3) RS
LAY 48'-12" R.C.P.
STA 313+65 TO 317+00 LAY 335'-6" V.S.P. L.S.
STA 313+65 TO 317+00 LAY 335'-12" V.S.P. RS.

82 STA 317+00 CONST. 1 No. 2 CB L.S., 1 No. 2 CB Mod. (3x3) RS.
LAY 48'-12" R.C.P.
STA 317+00 TO 320+00 LAY 300'-6" V.S.P. L.S.
STA 317+00 TO 320+00 LAY 300'-12" V.S.P. RS.
STA 317+65 LAY 10'-6" V.S.P. L.S.

OMIT GUTTER RS.

OMIT GUTTER BS.

1700 @ -0.24%



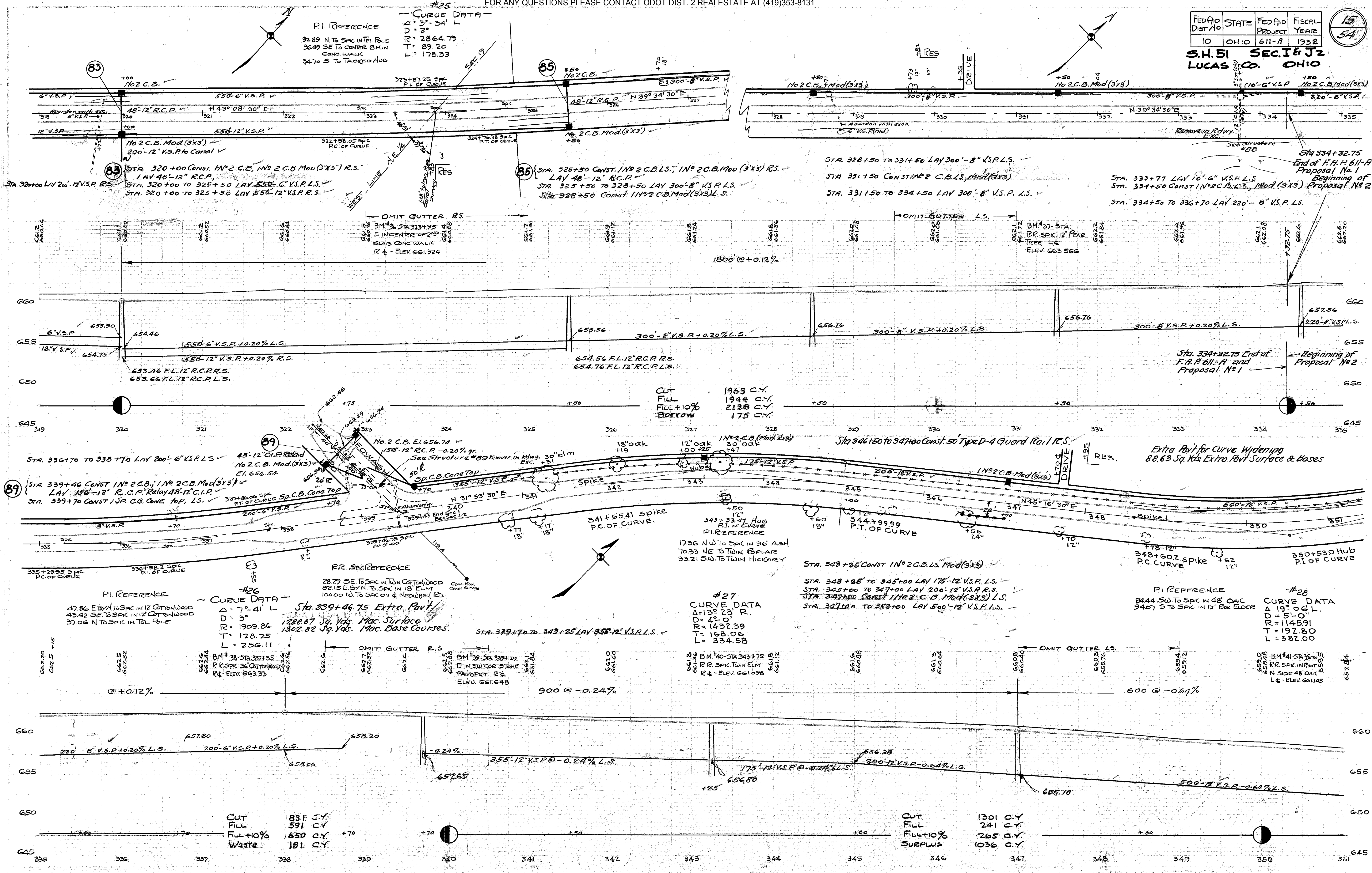
CUT 756 C.Y.
FILL 462 C.Y.
FILL+10% 508 C.Y.
SURPLUS 256 C.Y.

CUT 1246 C.Y.
FILL 455 C.Y.
FILL+10% 501 C.Y.
SURPLUS 745 C.Y.

655.47 FL. R.C.P. RS.
655.67 FL. R.C.P. LS.

FED AID DIST NO	STATE	FED AID PROJECT	FISCAL YEAR
10	OHIO	611-A	1932

S.H. 51 SEC. 16 J2
LUCAS CO. OHIO



P.I. REFERENCE
32.89 N TO SPIK IN TEL POLE
36.49 SE TO CENTER BM IN CONC WALK
34.70 S TO TACKED AUS

#25
CURVE DATA
Δ = 3°-34' L
D = 2°
R = 2864.79
T = 89.20
L = 178.33

STA. 328+50 TO 331+50 LAY 300'-8" V.S.P. L.S.
STA. 331+50 CONST IN 2 C.B. L.S. Mod (3x3)
STA. 331+50 TO 334+50 LAY 300'-8" V.S.P. L.S.

STA. 333+77 LAY 10'-6" V.S.P. L.S.
STA. 334+50 CONST IN 2 C.B. L.S. Mod (3x3) Proposal No 2
STA. 334+50 TO 336+70 LAY 220'-8" V.S.P. L.S.

STA. 320+00 CONST IN 2 C.B. Mod (3x3) R.S.
LAY 48'-12" R.C.P.
STA. 320+00 TO 325+50 LAY 550'-6" V.S.P. L.S.
STA. 320+00 TO 325+50 LAY 550'-12" V.S.P. R.S.

STA. 325+50 CONST IN 2 C.B. L.S. Mod (3x3) R.S.
LAY 48'-12" R.C.P.
STA. 325+50 TO 328+50 LAY 300'-8" V.S.P. L.S.
STA. 328+50 CONST IN 2 C.B. Mod (3x3) L.S.

CUT 1963 C.Y.
FILL 1944 C.Y.
FILL+10% 2138 C.Y.
BORROW 175 C.Y.

STA. 348+25 TO 345+00 LAY 175'-12" V.S.P. L.S.
STA. 345+00 TO 347+00 LAY 200'-12" V.S.P. R.S.
STA. 347+00 CONST IN 2 C.B. Mod (3x3) L.S.
STA. 347+00 TO 352+00 LAY 500'-12" V.S.P. L.S.

P.I. REFERENCE
8444 SW TO SPIK IN 48" OAK
9407 S TO SPIK IN 12" Box ELDER

#28
CURVE DATA
Δ = 19°-06' L
D = 5'-0"
R = 1145.91
T = 197.80
L = 382.00

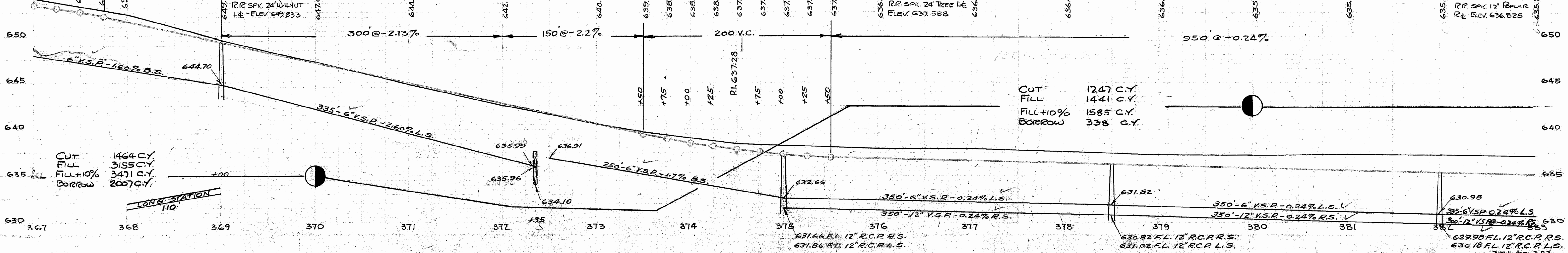
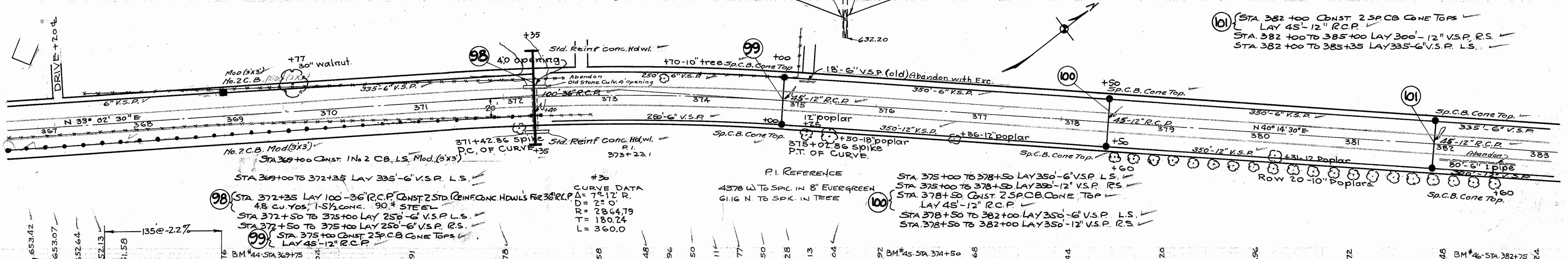
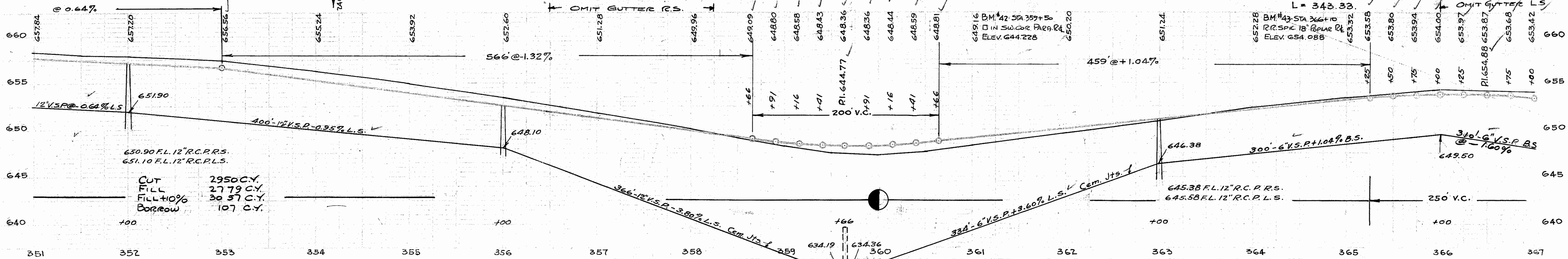
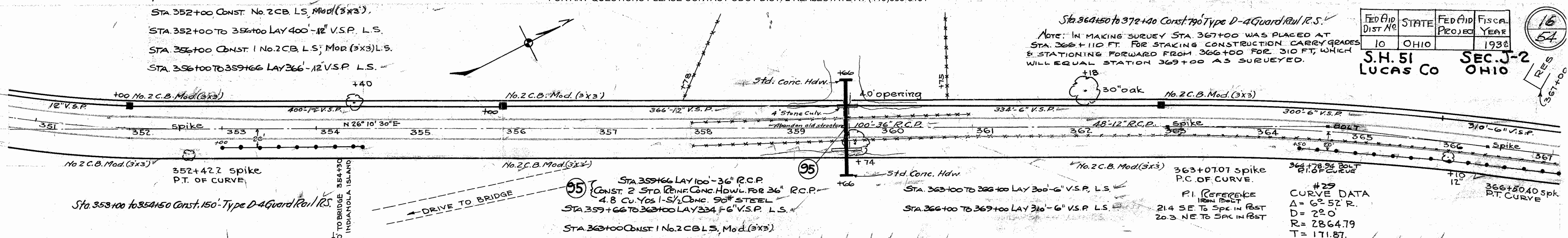
#27
CURVE DATA
Δ = 13°-23' R
D = 42'-0"
R = 1432.39
T = 168.06
L = 334.58

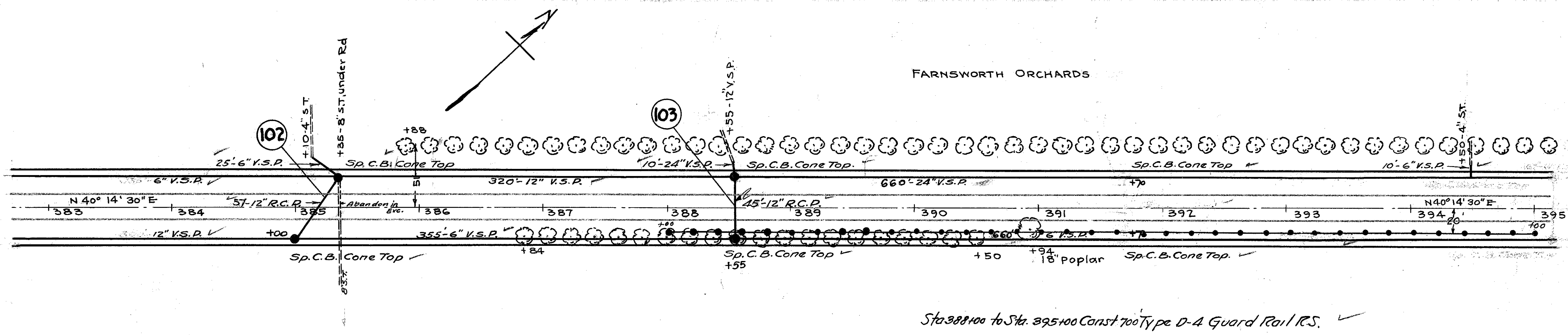
P.I. REFERENCE
47.86 E BY N TO SPIK IN 12" COTONWOOD
43.42 SE TO SPIK IN 12" COTONWOOD
37.06 N TO SPIK IN TEL POLE

#26
CURVE DATA
Δ = 7°-41' L
D = 3°
R = 1909.86
T = 128.25
L = 256.11

CUT 83 F C.Y.
FILL 591 C.Y.
FILL+10% 650 C.Y.
WASTE 181 C.Y.

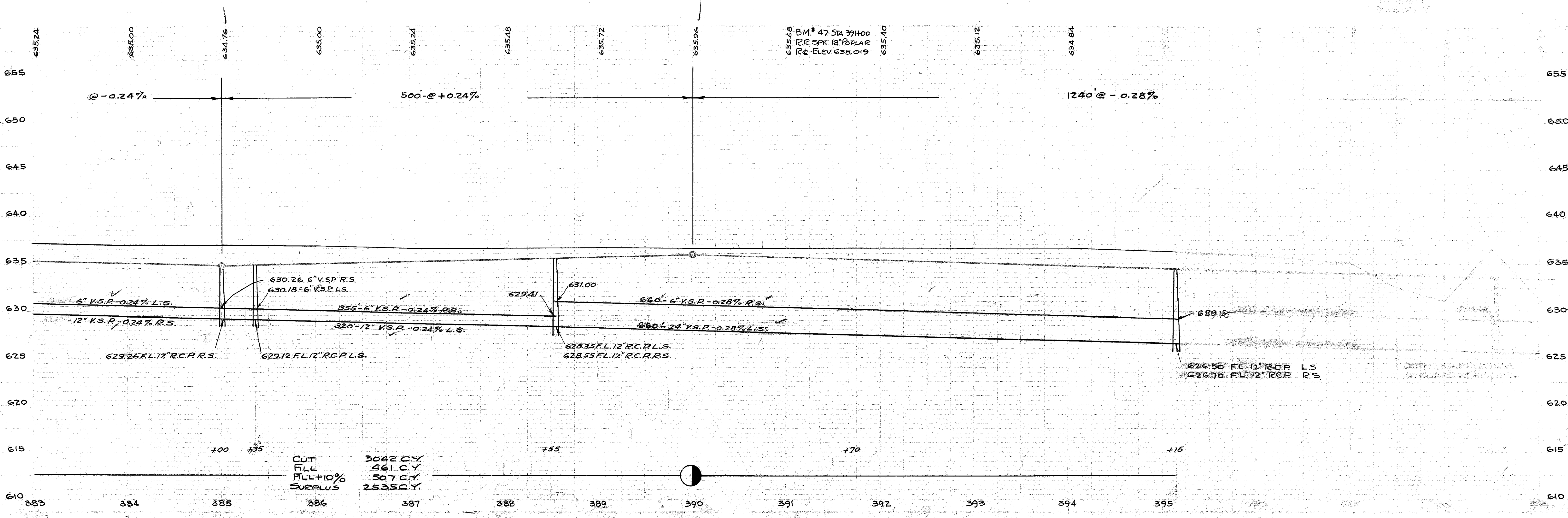
CUT 1301 C.Y.
FILL 241 C.Y.
FILL+10% 265 C.Y.
SURPLUS 1036 C.Y.

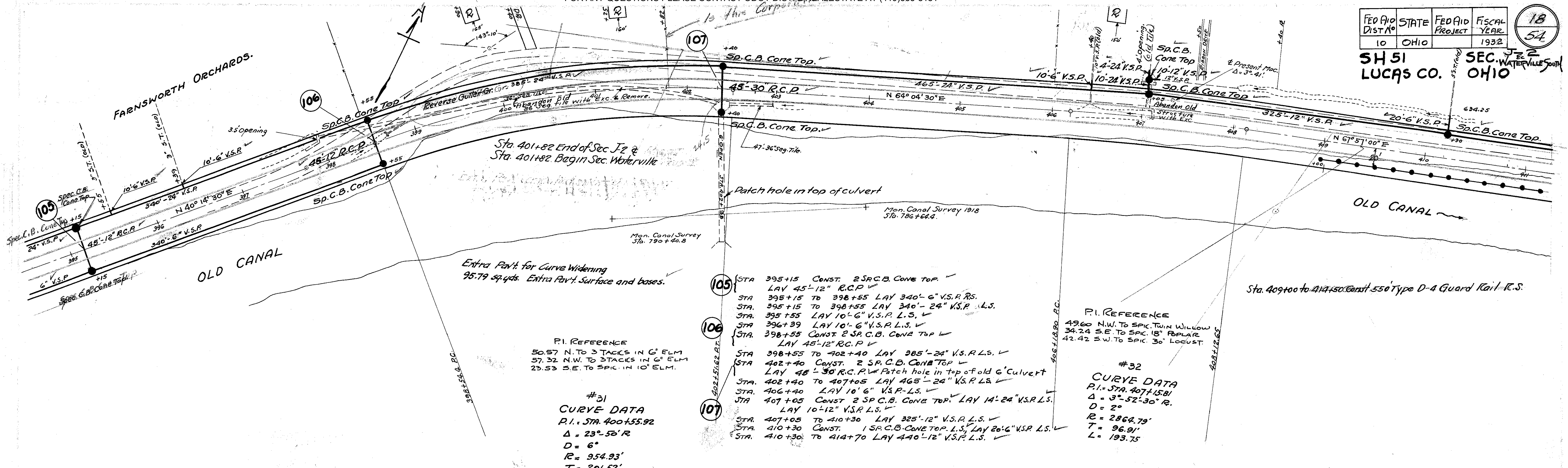




- 102 STA 385+00 CONST. 1 Sp.C.B. CONE TOP, R.S. ✓
- STA 385+00 TO 385+35 LAY 57'-12" R.C.P. ✓
- STA 385+35 CONST. 1 Sp.C.B. L.S. LAY 25'-6" V.S.P. ✓
- STA 385+00 TO 388+55 LAY 355'-6" V.S.P. R.S. ✓
- STA 385+35 TO 388+55 LAY 320'-12" V.S.P. L.S. ✓
- 103 STA 388+55 CONST. 2 Sp.C.B. CONE TOP ✓
- LAY 45'-12" R.C.P. LAY 10'-24" V.S.P. L.S. ✓
- STA 388+55 TO 395+15 LAY 660'-24" V.S.P. L.S. ✓
- STA 388+55 TO 395+15 LAY 660'-6" V.S.P. R.S. ✓

STA 394+50 LAY 10'-6" V.S.P. L.S. ✓





Extra Pavt. for Curve Widening
95.79 sq. yds. Extra Pavt. Surface and bases.

P.I. REFERENCE
50.57 N. TO 3 TACKS IN 6" ELM
57.32 N.W. TO 3 TACKS IN 6" ELM
23.53 S.E. TO SPIC. IN 10" ELM.

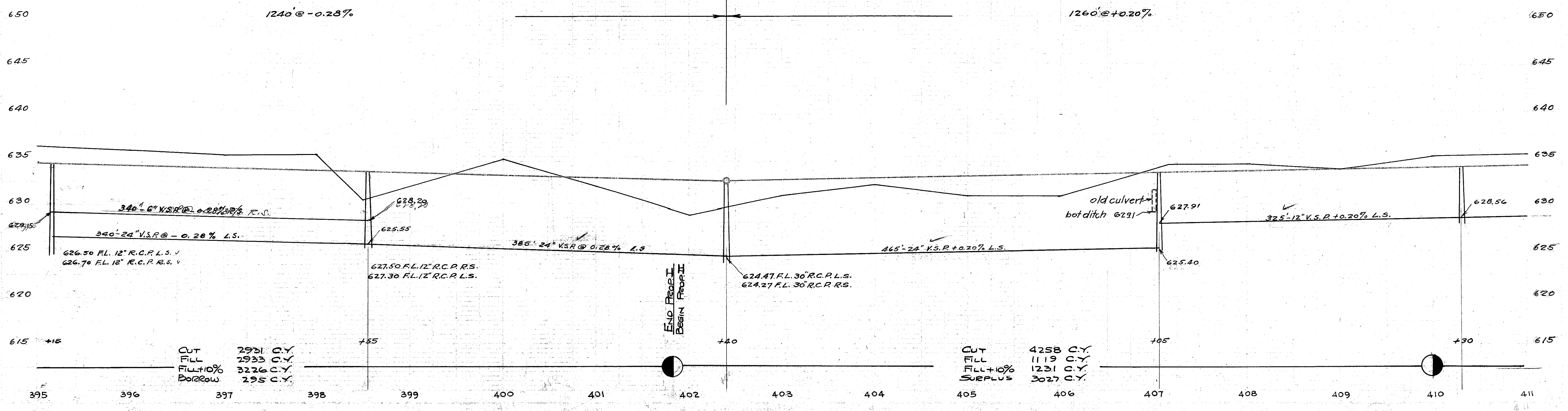
#31
CURVE DATA
P.I. STA. 400+55.92
 $\Delta = 23^\circ 52' R$
 $D = 6'$
 $R = 954.93'$
 $T = 201.52'$
 $L = 397.22'$

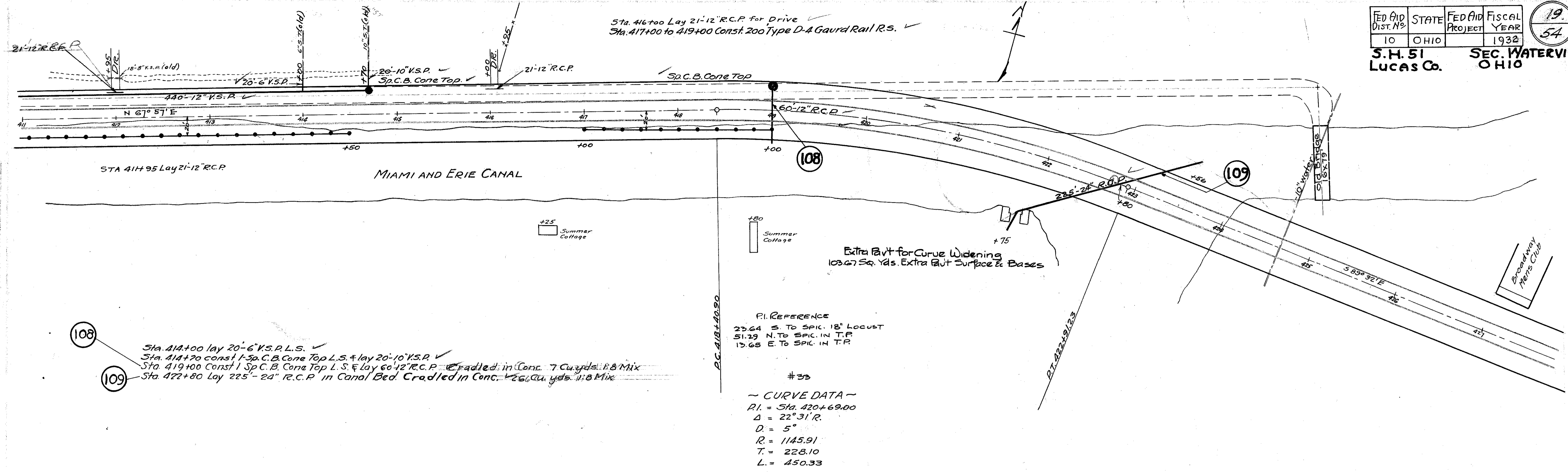
- STA 395+15 CONST. 2 SP.C.B. CONE TOP. LAY 45'-12" R.C.P.
- STA 395+15 TO 398+55 LAY 340'-6" V.S.P. RS.
- STA 395+15 TO 398+55 LAY 340'-24" V.S.P. L.S.
- STA 395+55 LAY 10'-6" V.S.P. L.S.
- STA 396+39 LAY 10'-6" V.S.P. L.S.
- STA 398+55 CONST. 2 SP.C.B. CONE TOP. LAY 45'-12" R.C.P.
- STA 398+55 TO 402+40 LAY 385'-24" V.S.P. L.S.
- STA 402+40 CONST. 2 SP.C.B. CONE TOP. LAY 48'-30" R.C.P. Patch hole in top of old 6' Culvert
- STA 402+40 TO 407+05 LAY 465'-24" V.S.P. L.S.
- STA 406+40 LAY 10'-6" V.S.P. L.S.
- STA 407+05 CONST. 2 SP.C.B. CONE TOP. LAY 14'-24" V.S.P. L.S. LAY 10'-12" V.S.P. L.S.
- STA 407+05 TO 410+30 LAY 325'-12" V.S.P. L.S.
- STA 410+30 CONST. 1 SP.C.B. CONE TOP. L.S. LAY 20'-6" V.S.P. L.S.
- STA 410+30 TO 414+70 LAY 440'-12" V.S.P. L.S.

P.I. REFERENCE
49.60 N.W. TO SPIC. TWIN WILLOW
34.24 S.E. TO SPIC. 18" FBPLAR
42.42 S.W. TO SPIC. 30" LOCUST

#32
CURVE DATA
P.I. STA. 407+15.81
 $\Delta = 3^\circ 52' 30" R$
 $D = 2'$
 $R = 2862.79'$
 $T = 96.91'$
 $L = 193.75'$

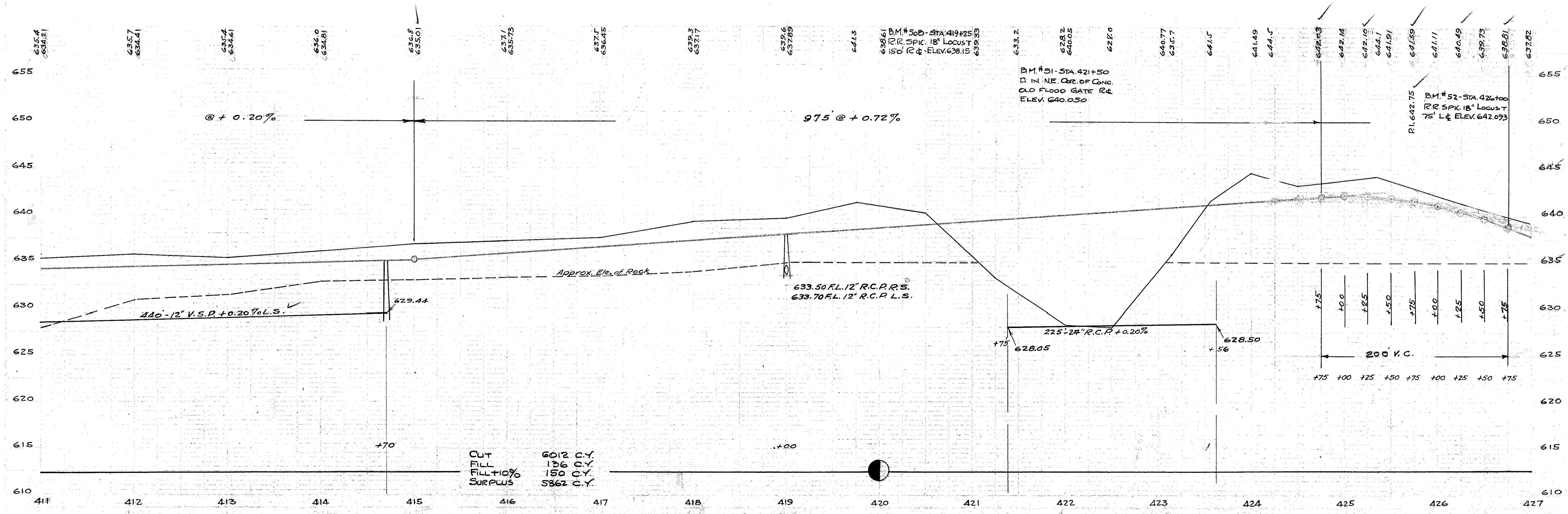
395	396	397	398	399	400	401	402	403	404	405	406	407	408	409	410	411
634.56	634.28	634.00	633.72	630.4	633.44	634.7	628.7	630.8	632.81	630.8	630.8	633.21	634.3	633.81	634.01	634.21



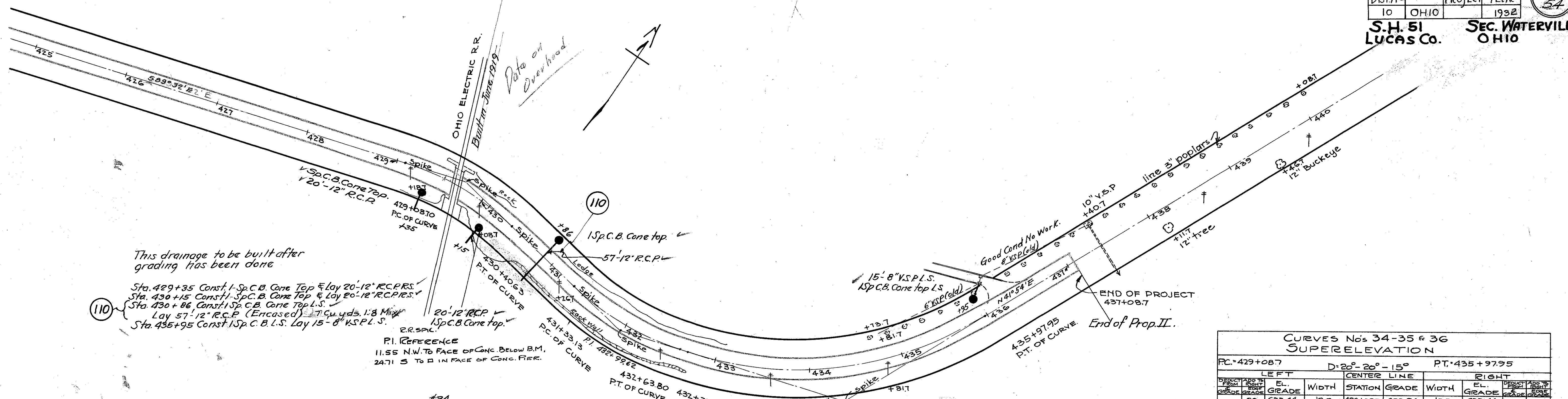


Sta. 414+00 lay 20'-6" V.S.P.L.S. ✓
 Sta. 414+70 const 1 Sp.C.B. Cone Top L.S. & lay 20'-10" V.S.P. ✓
 Sta. 419+00 Const 1 Sp.C.B. Cone Top L.S. & lay 60'-12" R.C.P. Cradled in Conc. 7 Curyds. 1:8 Mix ✓
 Sta. 422+80 Lay 225'-24" R.C.P. in Canal Bed Cradled in Conc. 26 Curyds. 1:8 Mix ✓

P.I. REFERENCE
 23.64 S. TO SPIC. 18" LOCUST
 51.29 N. TO SPIC. IN T.P.
 13.68 E. TO SPIC. IN T.P.
 #33
 ~ CURVE DATA ~
 P.I. = Sta. 420+69.00
 Δ = 22° 31' R.
 D = 5°
 R = 1145.91
 T = 228.10
 L = 450.33



CUT 6012 C.Y.
 FILL 10% 136 C.Y.
 SURPLUS 5862 C.Y.



This drainage to be built after grading has been done

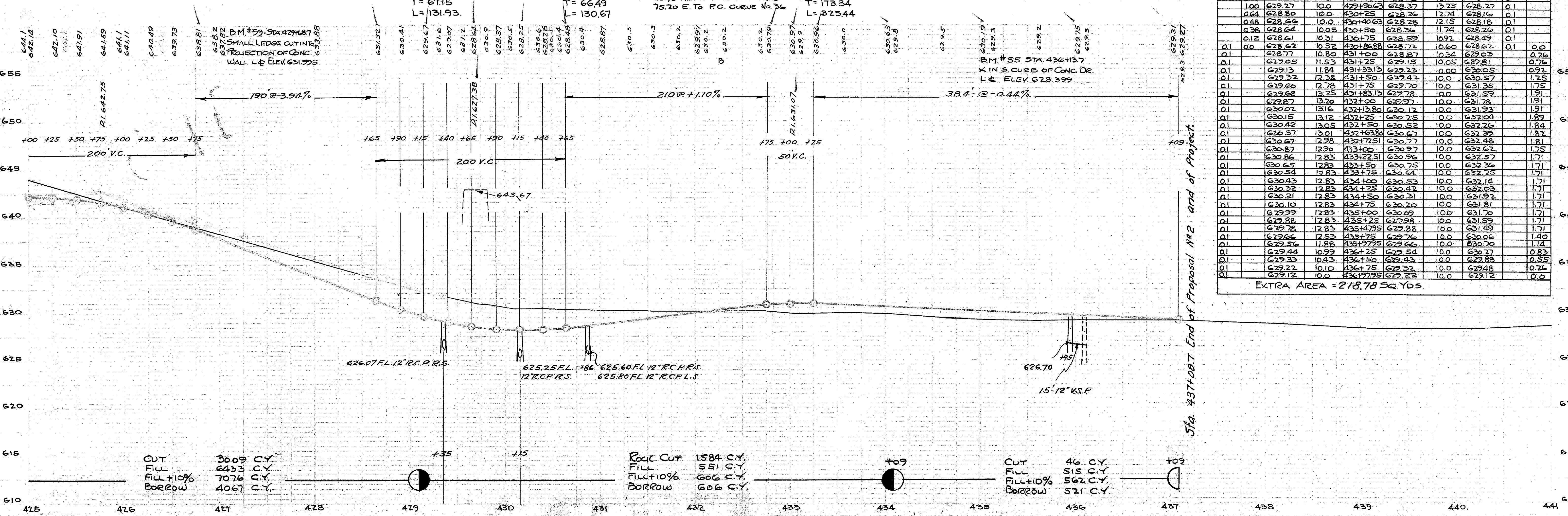
Sta. 429+35 Const. 1-Sp.C.B. Cone Top & Lay 20'-12" R.C.P.R.S.
Sta. 430+15 Const. 1-Sp.C.B. Cone Top & Lay 20'-12" R.C.P.R.S.
Sta. 430+86 Const. 1-Sp.C.B. Cone Top L.S.
Lay 57'-12" R.C.P. (Encased) 7 Cu. Yds. 1:8 Min. R.R. SPIC.
Sta. 435+95 Const. 1-Sp.C.B. L.S. Lay 15'-8" V.S.P.L.S.

Extra Part for Curve Widening, Curves #34-35-36
218.78 Sq. Yds. Extra Pavt. Surface

#34
PI 429+75.85
CURVE DATA.
Δ=26°-23' R.
D=20°-0'
R=286.48
T=67.15
L=131.93.

#35
CURVE DATA
Δ=26°-08' L.
D=20°-0'
R=286.48
T=66.49
L=130.67

#36
PI 434+45.65
CURVE DATA.
Δ=48°-49' L
D=15°-0'
R=381.97
T=173.34
L=325.44



CUT 3009 C.Y.
FILL 6433 C.Y.
FILL+10% 7076 C.Y.
BORROW 4067 C.Y.

Rock Cut 1584 C.Y.
FILL 551 C.Y.
FILL+10% 606 C.Y.
BORROW 606 C.Y.

CUT 46 C.Y.
FILL 515 C.Y.
FILL+10% 562 C.Y.
BORROW 521 C.Y.

CURVES Nos 34-35 & 36
SUPERELEVATION

STATION	D: 20°-20'-15°		PT. 435+97.95	
	LEFT	CENTER LINE	RIGHT	RIGHT
429+08.7	633.44	633.54	633.44	633.44
429+10	632.90	632.87	632.79	632.79
429+20	632.09	631.91	631.81	631.81
429+30	631.30	630.96	630.86	630.86
429+40	630.26	629.85	629.75	629.75
429+50	629.11	628.43	628.33	628.33
429+60	627.94	626.74	626.64	626.64
429+70	626.75	624.83	624.73	624.73
429+80	625.53	622.74	622.64	622.64
429+90	624.27	620.53	620.43	620.43
430+00	623.00	618.27	618.17	618.17
430+10	621.80	616.00	615.90	615.90
430+20	620.66	613.80	613.70	613.70
430+30	619.58	611.66	611.56	611.56
430+40	618.56	609.58	609.48	609.48
430+50	617.60	607.56	607.46	607.46
430+60	616.70	605.60	605.50	605.50
430+70	615.86	603.70	603.60	603.60
430+80	615.08	601.86	601.76	601.76
430+90	614.36	600.08	600.00	600.00
431+00	613.70	598.36	598.26	598.26
431+10	613.10	596.70	596.60	596.60
431+20	612.56	595.10	595.00	595.00
431+30	612.08	593.56	593.46	593.46
431+40	611.66	592.08	592.00	592.00
431+50	611.30	590.66	590.56	590.56
431+60	610.98	589.30	589.20	589.20
431+70	610.70	588.00	588.00	588.00
431+80	610.46	586.76	586.76	586.76
431+90	610.26	585.58	585.58	585.58
432+00	610.10	584.46	584.46	584.46
432+10	610.00	583.40	583.40	583.40
432+20	610.00	582.40	582.40	582.40
432+30	610.00	581.46	581.46	581.46
432+40	610.00	580.58	580.58	580.58
432+50	610.00	579.76	579.76	579.76
432+60	610.00	579.00	579.00	579.00
432+70	610.00	578.30	578.30	578.30
432+80	610.00	577.66	577.66	577.66
432+90	610.00	577.08	577.08	577.08
433+00	610.00	576.56	576.56	576.56
433+10	610.00	576.10	576.10	576.10
433+20	610.00	575.70	575.70	575.70
433+30	610.00	575.36	575.36	575.36
433+40	610.00	575.08	575.08	575.08
433+50	610.00	574.86	574.86	574.86
433+60	610.00	574.70	574.70	574.70
433+70	610.00	574.60	574.60	574.60
433+80	610.00	574.56	574.56	574.56
433+90	610.00	574.58	574.58	574.58
434+00	610.00	574.66	574.66	574.66
434+10	610.00	574.80	574.80	574.80
434+20	610.00	575.00	575.00	575.00
434+30	610.00	575.26	575.26	575.26
434+40	610.00	575.58	575.58	575.58
434+50	610.00	575.96	575.96	575.96
434+60	610.00	576.40	576.40	576.40
434+70	610.00	576.90	576.90	576.90
434+80	610.00	577.46	577.46	577.46
434+90	610.00	578.08	578.08	578.08
435+00	610.00	578.76	578.76	578.76
435+10	610.00	579.50	579.50	579.50
435+20	610.00	580.30	580.30	580.30
435+30	610.00	581.16	581.16	581.16
435+40	610.00	582.08	582.08	582.08
435+50	610.00	583.06	583.06	583.06
435+60	610.00	584.10	584.10	584.10
435+70	610.00	585.20	585.20	585.20
435+80	610.00	586.36	586.36	586.36
435+90	610.00	587.58	587.58	587.58
436+00	610.00	588.86	588.86	588.86
436+10	610.00	590.20	590.20	590.20
436+20	610.00	591.60	591.60	591.60
436+30	610.00	593.06	593.06	593.06
436+40	610.00	594.58	594.58	594.58
436+50	610.00	596.16	596.16	596.16
436+60	610.00	597.80	597.80	597.80
436+70	610.00	599.50	599.50	599.50
436+80	610.00	601.26	601.26	601.26
436+90	610.00	603.08	603.08	603.08
437+00	610.00	605.00	605.00	605.00

EXTRA AREA = 218.78 Sq. Yds.