

O.D.O.T. DISTRICT 2 SURVEY OFFICE

PERSONNEL

REFERENCE NO. 39

SHEET 46 OF 68

NOTES HUSS

H.C. VAU DUSEN

DATE 6-5-97

ROUTE U.S. 24

R.C. LOEHRKE

WEATHER FAIR

COUNTY LUCAS

C. COX

TEMP. +70 °F

TOWNSHIP PROVIDENCE

SECTION 24

T 6 N R 2 E

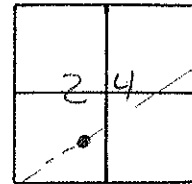
TYPE MONUMENT P.K. NAIL/W

ON SURFACE - BELOW OR

LEFT - C. PAVT. - RIGHT 7.7'

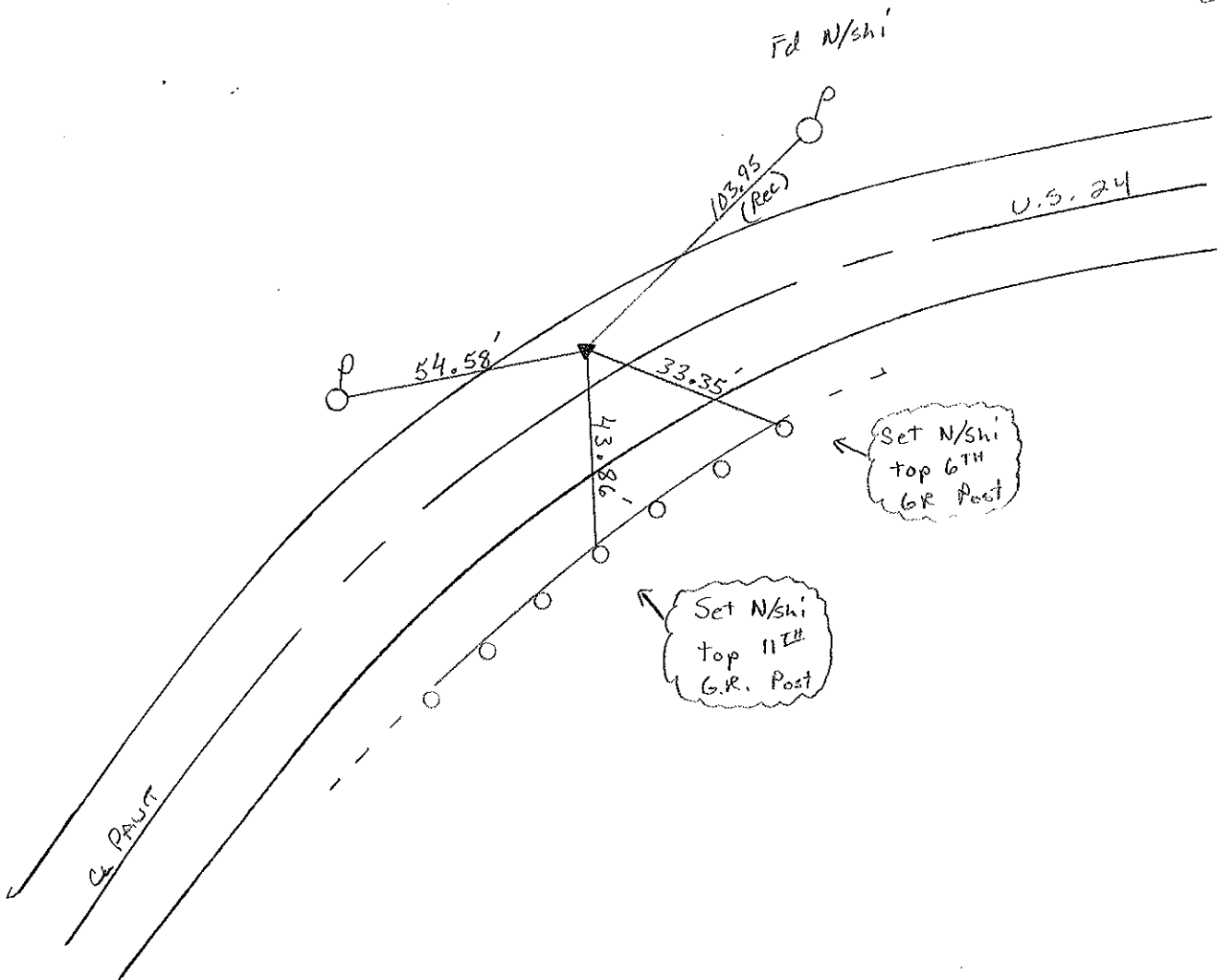
4.4' TO LT. EDGE PAVEMENT

S.L.M. 356+00



RECORD: P.I. PLAN STA. = 356+61.25

Set PK/W
10-22-97
SAH



Q.D.O.T. DISTRICT 2 SURVEY OFFICE

Sht. 45 of _____

County Lucas S.R. 125 #24

Date OK-9-5-80 G.W.S.
23 July 1980

Township Providence

Weather Warm

Section 24

Temp. 78°

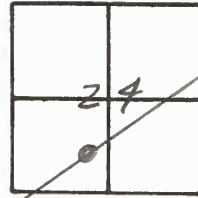
T_N, R_E

Personnel P. Stone

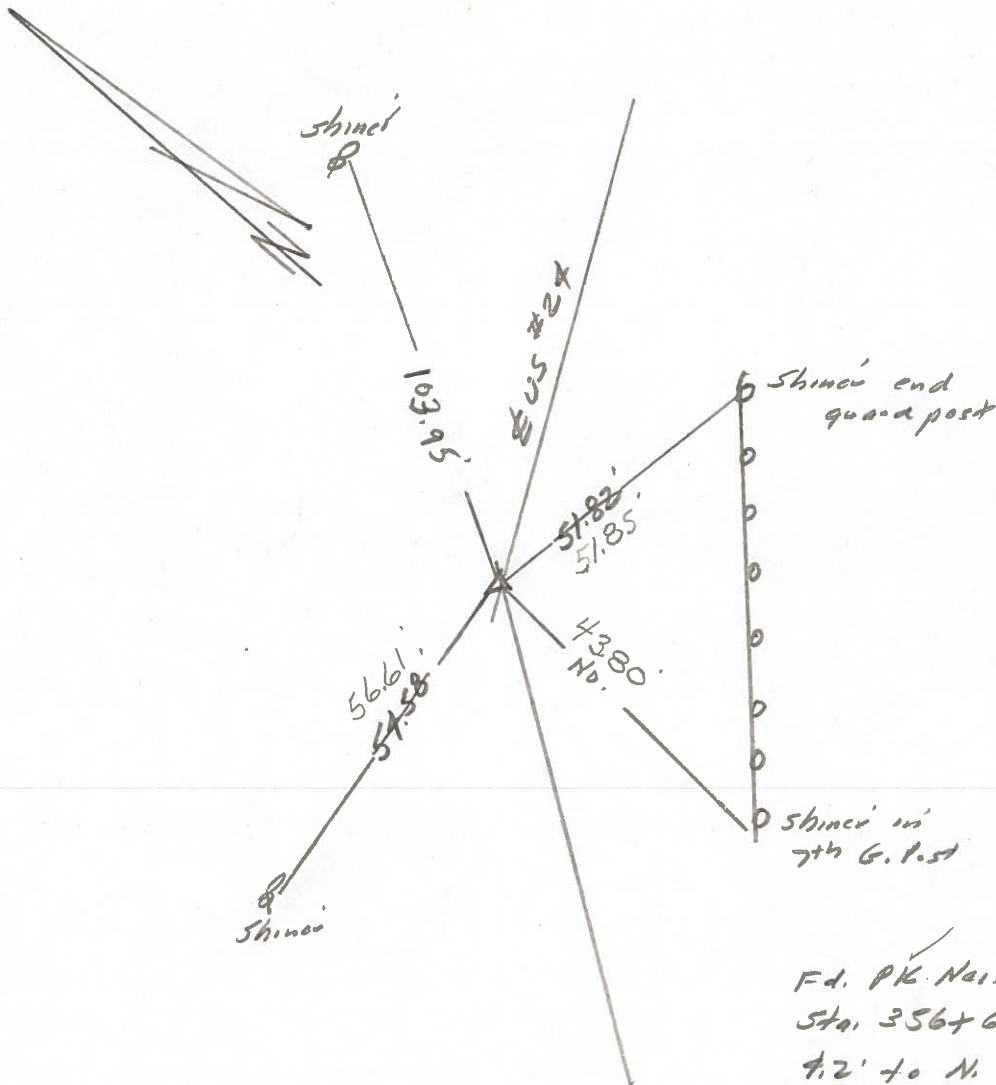
R. Michalak

D. Curtis

39



Ref. No. 4239

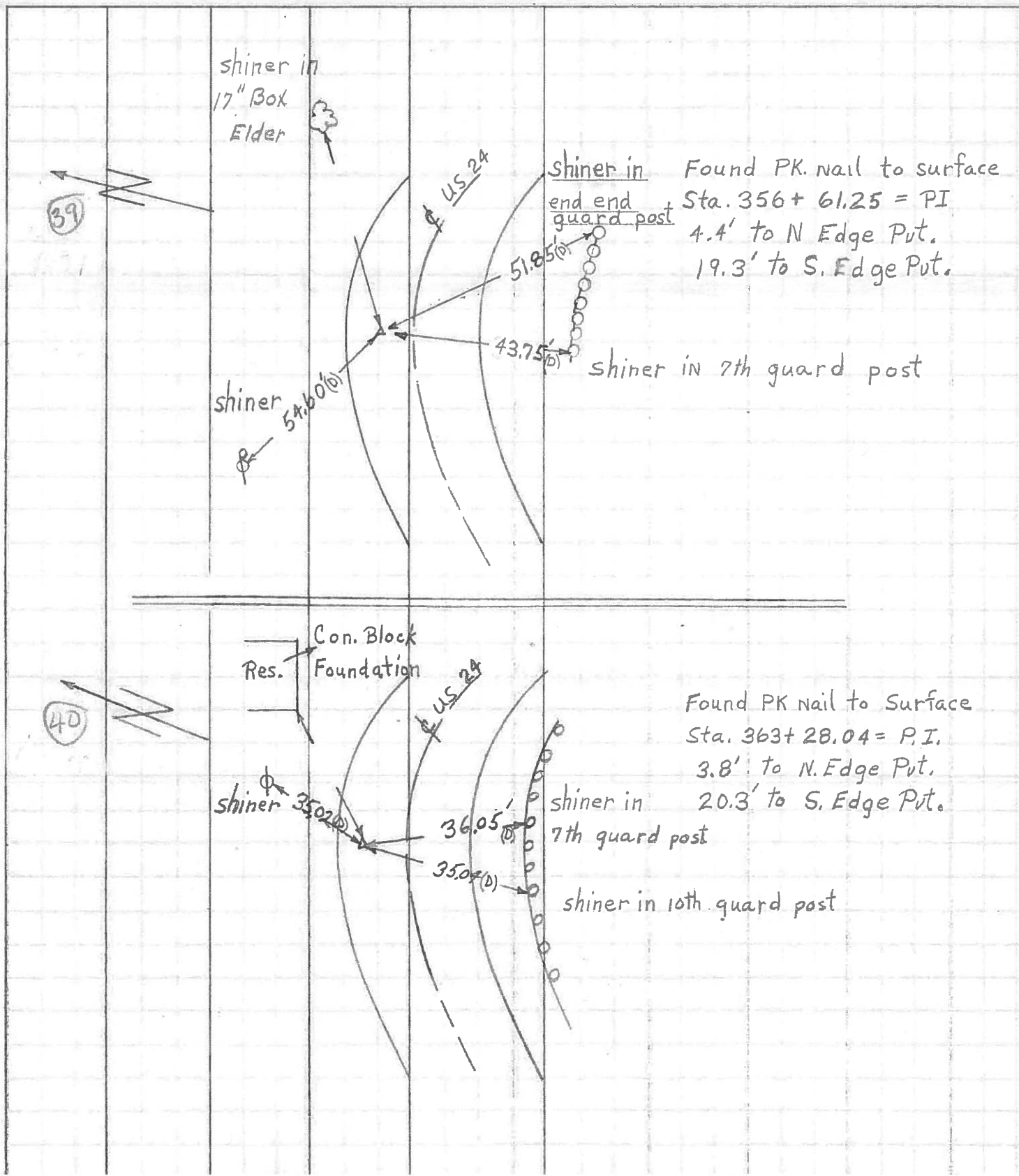


Fd. PK. Nail To Surface
Sta. 356+61.25 = P.I.
4.2' to N. edge put,
20.0' to S. edge put.

PERSONNEL	TITLE	PERSONNEL	TITLE
W. Denno			
D. Curtis			
P. Engel			

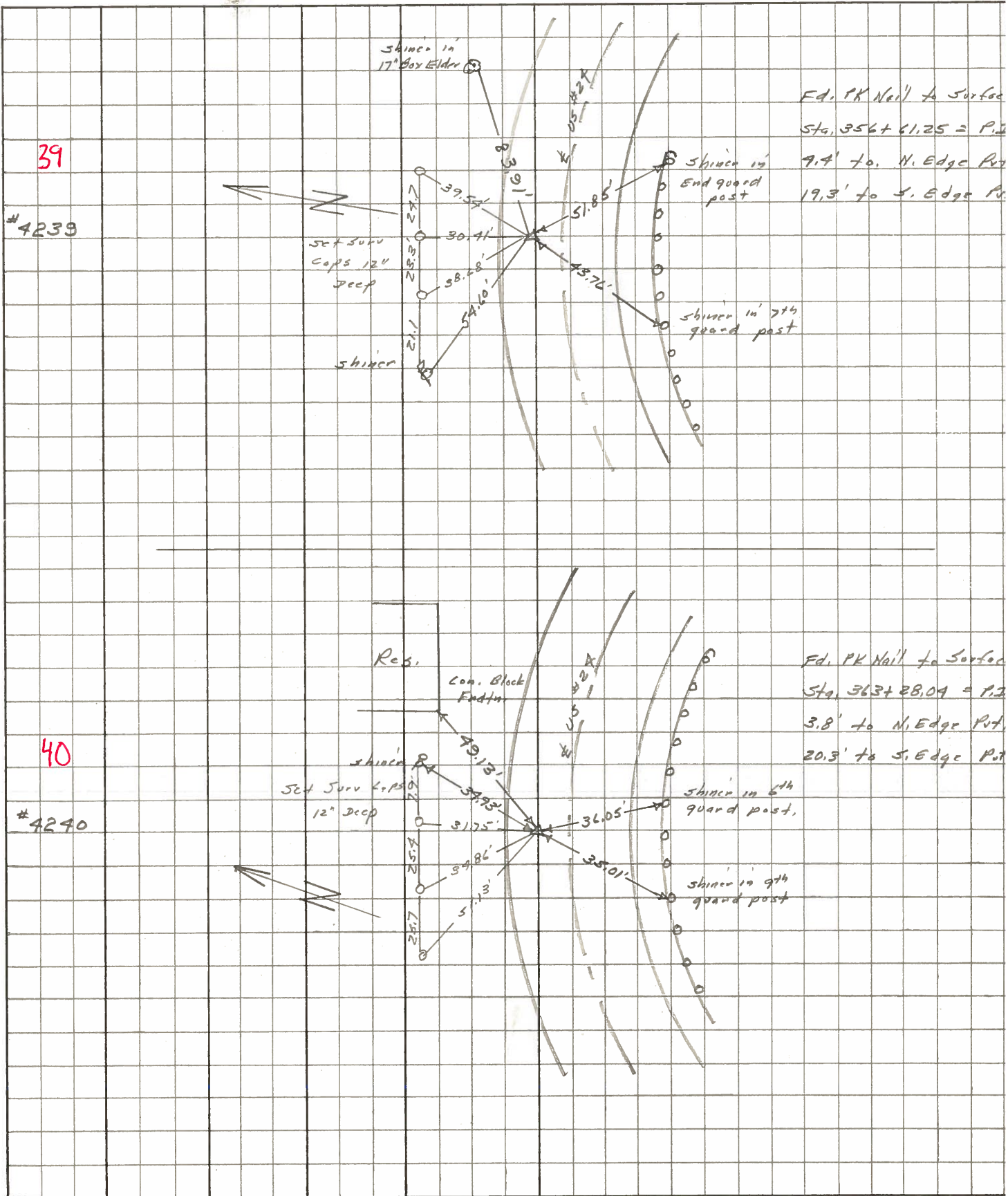
COUNTY Lucas DATE April 30, 1977
 S. R. U.S. # 24 WEATHER Mild
 SEC. TEMP. 47°

DESCRIPTION References to Control Points JOB NO.



PERSONNEL	TITLE	PERSONNEL	TITLE	COUNTY	DATE	WEATHER	TEMP.
Stone	Notes			Lucas	May 68	Fair	
Beck	Flag			#29			
Michalak	Tape						
Schroder	Tape						

DESCRIPTION References to Control Points JOB NO. _____



PERSONNEL	TITLE	PERSONNEL	TITLE	COUNTY	DATE
<u>Stone</u>		<u>Schroder</u>		<u>Lucas</u>	<u>7 Feb 66</u>
<u>Danno</u>				S. R. <u>#29</u>	WEATHER <u>Cool</u>
<u>Beck</u>				SEC. _____	TEMP. <u>26°</u>
<u>Brindley</u>					

DESCRIPTION Refs to Control Points JOB NO. _____

	LEFT	CENTER LINE	RIGHT
317+56.65 = P.I. (BAILEY RD.)		44.47	N.W. To Shiner in P.P. (D)
	Ed. R.R. Spt.	40.30'	S.W. To Shiner in T.P. (D)
33	To Surface	26.68'	S. To Checkd "i" in Con. Men. (P)
327+71.96 = P.I.		33.70'	S. To X" on Co. "A" Post (D)
	Ed. R.R. Spt.	58.45'	N.E. To Shiner in P.P. (D)
34	To Surface	49.82'	S.E. To Shiner in T.P. (D)
331+35.27 = P.O.T. (Hartzfeld Rd.)		61.09'	S.W. To Shiner in T.P. (D)
	Ed. R.R. Spt.	51.35'	N.W. To Luc. Co. B.M. (D)
35	To Surface	57.17	N.W. To Shiner in T.P. (D)
		81.52'	N. To R.R. Spt. & Hartzfeld (D)
336+61.30 = P.I.			Searched for Could Not Find
36			
345+55.88 = P.I.		77.28'	S. To Shiner in T.P. (D)
	Ed. PK No. 1	77.51'	S.W. To Shiner in 18" Poplar (D)
37	To Surface	53.16'	N.W. To Shiner in P.P. (D)
350+95.72 = P.I.		86.02'	N.E. To Shiner in P.P. (D)
	Ed. PK No. 1	47.53'	N.W. To Shiner in P.P. (D)
38	To Surface	58.09'	S.W. To Shiner in End Guard Post (D)
356+61.25 = P.I.		83.91'	N.E. To Shiner in 17" Box Elder (D)
	Ed. PK No. 1	59.60'	N.W. To Shiner in P.P. (D)
39	To Surface	51.85'	S.E. To Shiner in End Guard Post (D)
		43.76'	S.W. To Shiner in 7th Guard Post (D)

PERSONNEL Silvester TITLE _____ PERSONNEL _____ TITLE _____
 # _____
 CREW _____

COUNTY LUCAS DATE _____
 S. R. # 24 WEATHER _____
 SEC. He-LUC.-Waterville TEMP. _____
 (0.00)

DESCRIPTION LEFT CENTER LINE RIGHT JOB NO.

✓ P.I. Sta. 345+55.88
 P.K. Nail set
 37

✓ P.I. Sta. 350+95.72
 P.K. Nail set
 38

✓ P.I. Sta. 356+61.25
 P.K. Nail set
 39

✓ P.I. Sta. 363+28.04
 P.K. Nail set
 40

✓ P.I. Sta. 370+94.82
 P.K. Nail set
 41

