

O.D.O.T. DISTRICT 2 SURVEY OFFICE

PERSONNEL _____

REFERENCE NO. 62

SHEET 7 OF _____

NOTES 1. Stone

H.C. J. Curtis

DATE 27 June 90

ROUTE US#24

R.C. J. Hauscholder

WEATHER Warm

COUNTY Lucas

TEMP. 80°

TOWNSHIP Waterville

SECTION 16

T _____ R _____

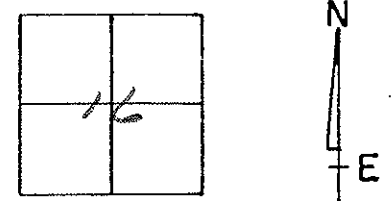
TYPE MONUMENT 1. Rod in Man. Box

ON SURFACE - BELOW Surface

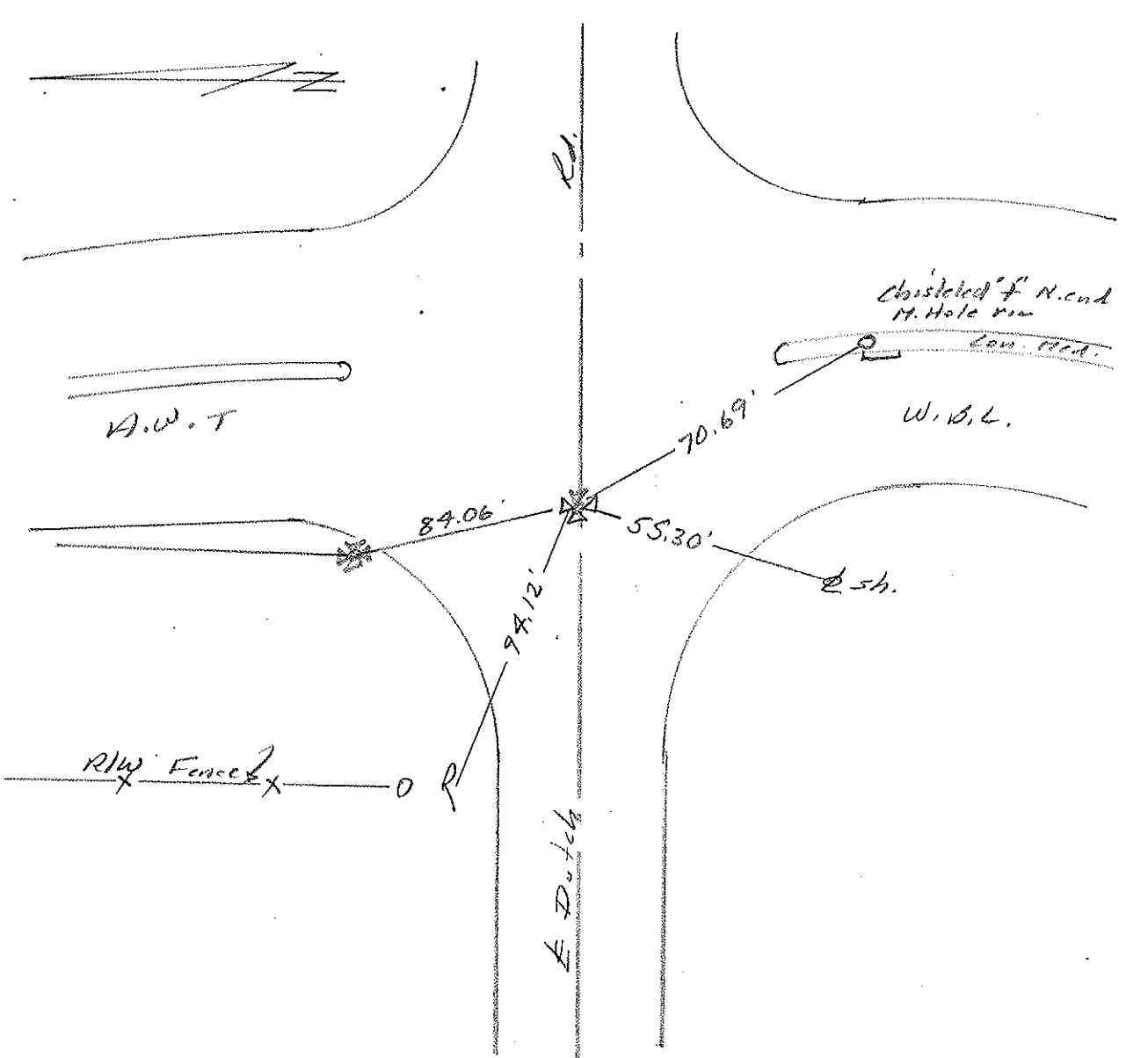
LEFT - & PAV'T. - RIGHT _____

TO _____ EDGE PAVEMENT

S.L.M. 10+00 @ Dutch Rd.

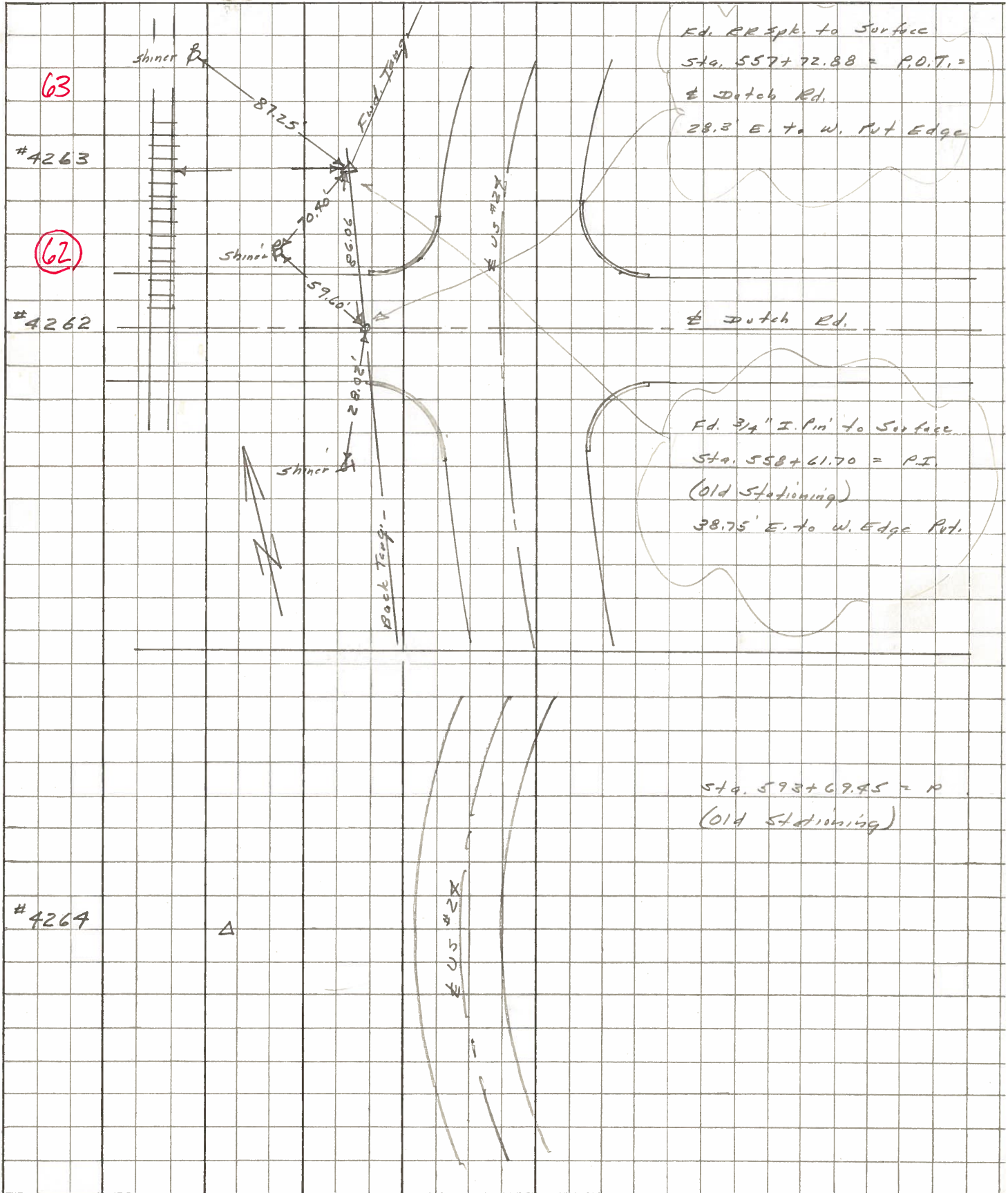


SLM-12.815



PERSONNEL	TITLE	PERSONNEL	TITLE	COUNTY	DATE	WEATHER	TEMP.
Stone	Notes			Lucas	June 68	Fair	
Beck	Flag			# 24			
Michelate	Tape			SEC. Waterville to Meumee			
Schroder	Tape						

DESCRIPTION References to Control Points JOB NO. _____



PERSONNEL	TITLE	PERSONNEL	TITLE	COUNTY	DATE
Stone		Schroder		Lucas	7 Feb. 66
Dennis				S. R. #24	WEATHER Mild
Beck				SEC.	TEMP. 50°
Brindley					

DESCRIPTION Refs. To Control Pts. JOB NO. _____

LEFT	CENTER LINE	RIGHT
787+78.72 = P.I. 59		SEARCHED FOR - COULD NOT FIND
✓ 504+42.39 = P.I. 60		SEARCHED FOR - COULD NOT FIND
✓ 521+58.94 = P.I. 61 F.d. 1" Axle at Surface	115.27' 63.64' 35.50' 35.6'	E. To Shiner in P.P. (P) S.E. To Shiner in 17" Eling (D) S.W. To "4" on C.E. (P) Pl. Angles to Ex. SR#24
✓ 558+61.70 = P.I. 63 F.d. 3/4" I. Pin at Surface	87.25' 86.15' 86.85' 70.40'	N.W. To Shiner in P.P. (D) W. To Shiner in P.P. (D) S.W. To Shiner in P.P. (D)
✓ 557+72.88 = Dutch Rd. (SEE BELOW) 62		SEARCHED FOR - COULD NOT FIND
593+67.45 = P.I.		SEARCHED FOR - COULD NOT FIND
✓ 616+75.45 = P.I. (Black Rd.) 65 F.d. 1/2" B. Rd. Horn To Surface 83.82	97.65' 33.73' 82.29' 53.51'	S.W. To Shiner in P.P. (D) N.W. To "4" on Conv. Curve (D) S. To Shiner in T.P. (D) N.E. To Shiner in L.P. (D)
✓ Dutch Rd. F.d. R.R. Spk. To Surface (Looks To Be On Back Tang.)	28.02' 86.06' 79.40' 59.60'	S.W. To Shiner in T.P. (D) N. To 3/4" I.P. (P.I. 558+61.70) W.S.W. To Shiner in P.P. (D) N.W.

PERSONNEL TITLE PERSONNEL TITLE

COUNTY Lucas

DATE 3-16-53

S. R. #24

WEATHER

SEC.

TEMP.

DESCRIPTION

Waterville - Maumee

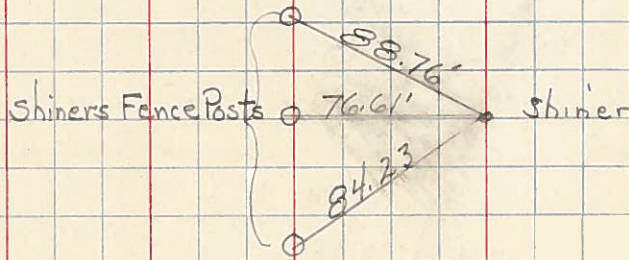
JOB NO.

LEFT

CENTER LINE

RIGHT

Sta. 553+17.16 P.C.



Sta. 558+61.70' P.I.

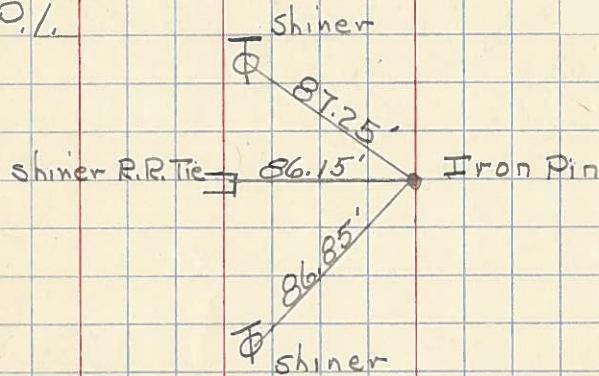
$\Delta = 13^\circ - 33' \text{ Rt.}$

$D = 1^\circ - 15'$

$T = 544.54$

$L = 1084.00$

63

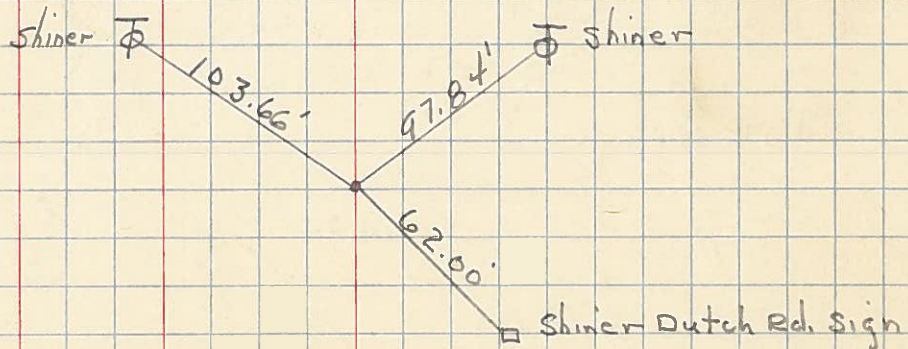


88.82

Sta. 557+72.88

Dutch Rd.

62



Sta. 564+01.16 P.T.

Shiners in R.R. Ties @ Joint

