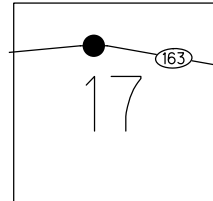


O.D.O.T. DISTRICT 2 SURVEY OFFICE (USE ONLY)

PERSONNEL _____ REFERENCE NO. 135 SHEET 15 OF 66
 NOTES LUMBREZER DATE 5/6/11 ROUTE SR 163
 H.C. FINTEL WEATHER CLOUDY COUNTY OTTAWA
 R.C. LUMBREZER TEMP. 60° TOWNSHIP DANBURY
 DWG BY NIESE PID 107060 SECTION 2-17

TYPE MONUMENT P.K./WASHER
 ON SURFACE - ~~BELOW~~ ON
 OFFSET Q PAVEMENT 0.7' LT : ~~RT~~
11.3' TO LT EDGE PAVEMENT
 STATION: 1748+58

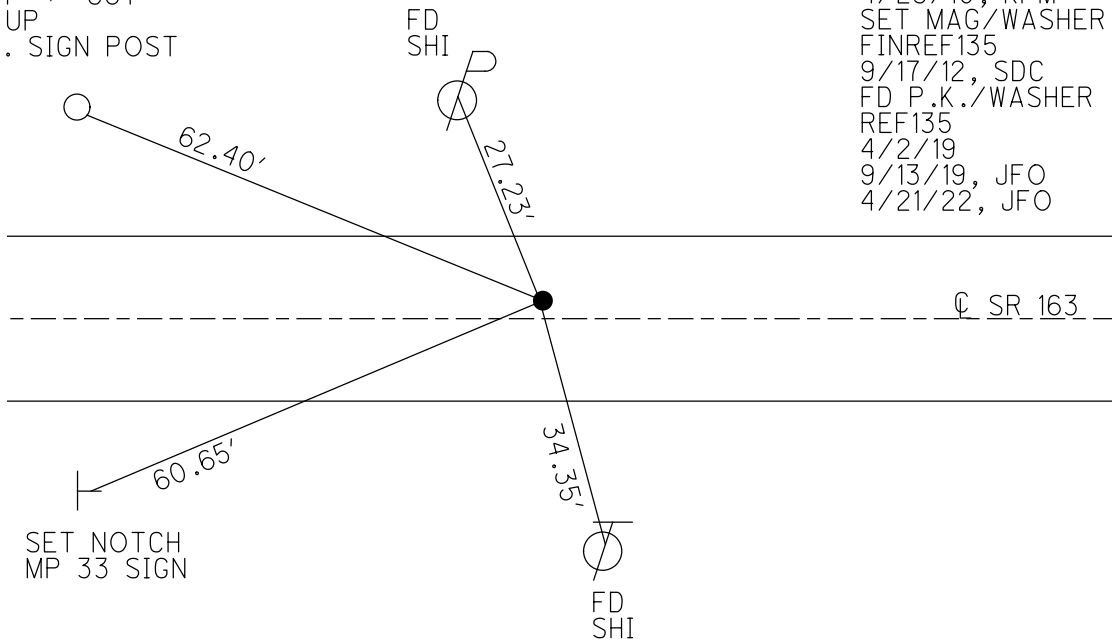
NOTE:
THIS MAP IS FOR ODOT PURPOSES ONLY.
TO INDEX REFERENCE TIES, AND DOES NOT
REPRESENT TRUE LAND SUBDIVISION.



HORIZ.DATUM: NAD83(2011) GEOID: 2012A
 GRID: NORTHING: 679744.922 EASTING: 1887160.938

RECORD: P.I.
 $\Delta = 01^\circ 28' RT$
 STA. 345+46.59
 1983 PLAN
 SET P.K./WASHER
 ATOP P.K./WASHER
 SET P.K./WASHER
 6/4/96
 FD P.K./WASHER
 9/28/09, 4/8/10
 SV110
 4/23/10, KPM
 SET MAG/WASHER
 FINREF135
 9/17/12, SDC
 FD P.K./WASHER
 REF135
 4/2/19
 9/13/19, JFO
 4/21/22, JFO

SET "+" CUT
 2' UP
 ST. SIGN POST



O.D.O.T. DISTRICT 2 SURVEY OFFICE (USE ONLY)

PERSONNEL _____ REFERENCE NO. 135 SHEET 15 OF 63
 NOTES LUMBREZER DATE 5/6/11 ROUTE SR 163
 H.C. FINTEL WEATHER CLOUDY COUNTY OTTAWA
 R.C. LUMBREZER TEMP. 60° TOWNSHIP DANBURY
 DWG BY NIESE PID 107060 SECTION 2-17

TYPE MONUMENT P.K./WASHER

ON SURFACE - ~~BELOW~~ ON

OFFSET \varnothing PAVEMENT 0.7' LT : ~~RT~~

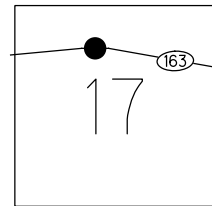
11.3' TO LT EDGE PAVEMENT

STATION: 1748+58

HORZ.DATUM: NAD83(2011) GEOID: 2012A

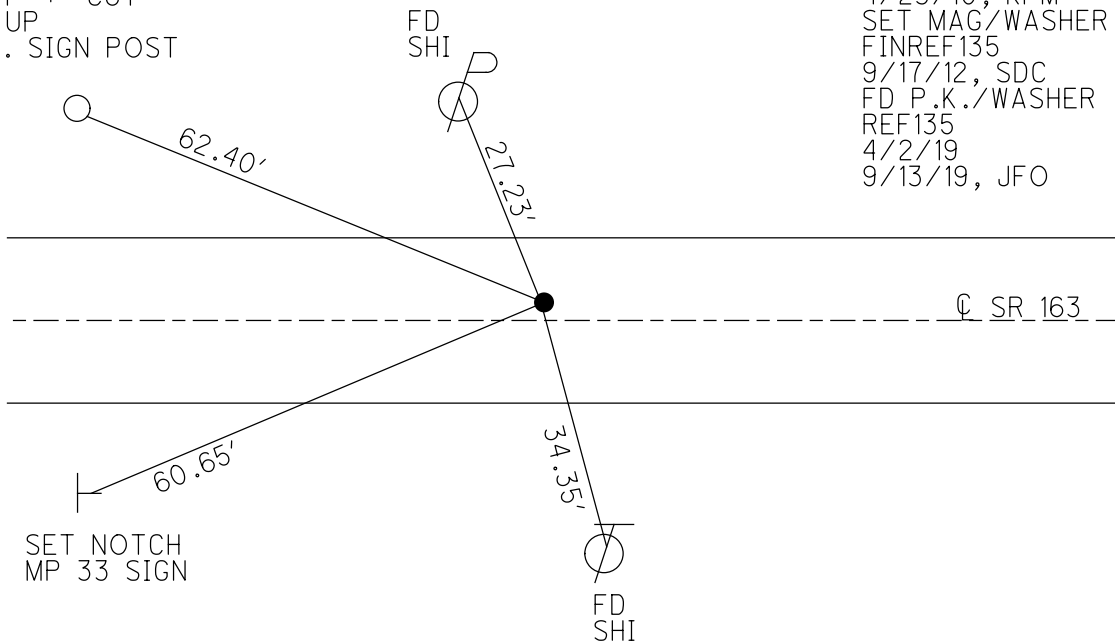
GRID: NORTHING: 679744.922 EASTING: 1887160.938

NOTE:
THIS MAP IS FOR ODOT PURPOSES ONLY.
TO INDEX REFERENCE TIES, AND DOES NOT
REPRESENT TRUE LAND SUBDIVISION.



RECORD: P.I.
 $\Delta = 01^\circ 28' RT$
 STA.345+46.59
 1983 PLAN
 SET P.K./WASHER
 ATOP P.K./WASHER
 SET P.K./WASHER
 6/4/96
 FD P.K./WASHER
 9/28/09, 4/8/10
 SV110
 4/23/10, KPM
 SET MAG/WASHER
 FINREF135
 9/17/12, SDC
 FD P.K./WASHER
 REF135
 4/2/19
 9/13/19, JFO

SET "+" CUT
 2' UP
 ST. SIGN POST

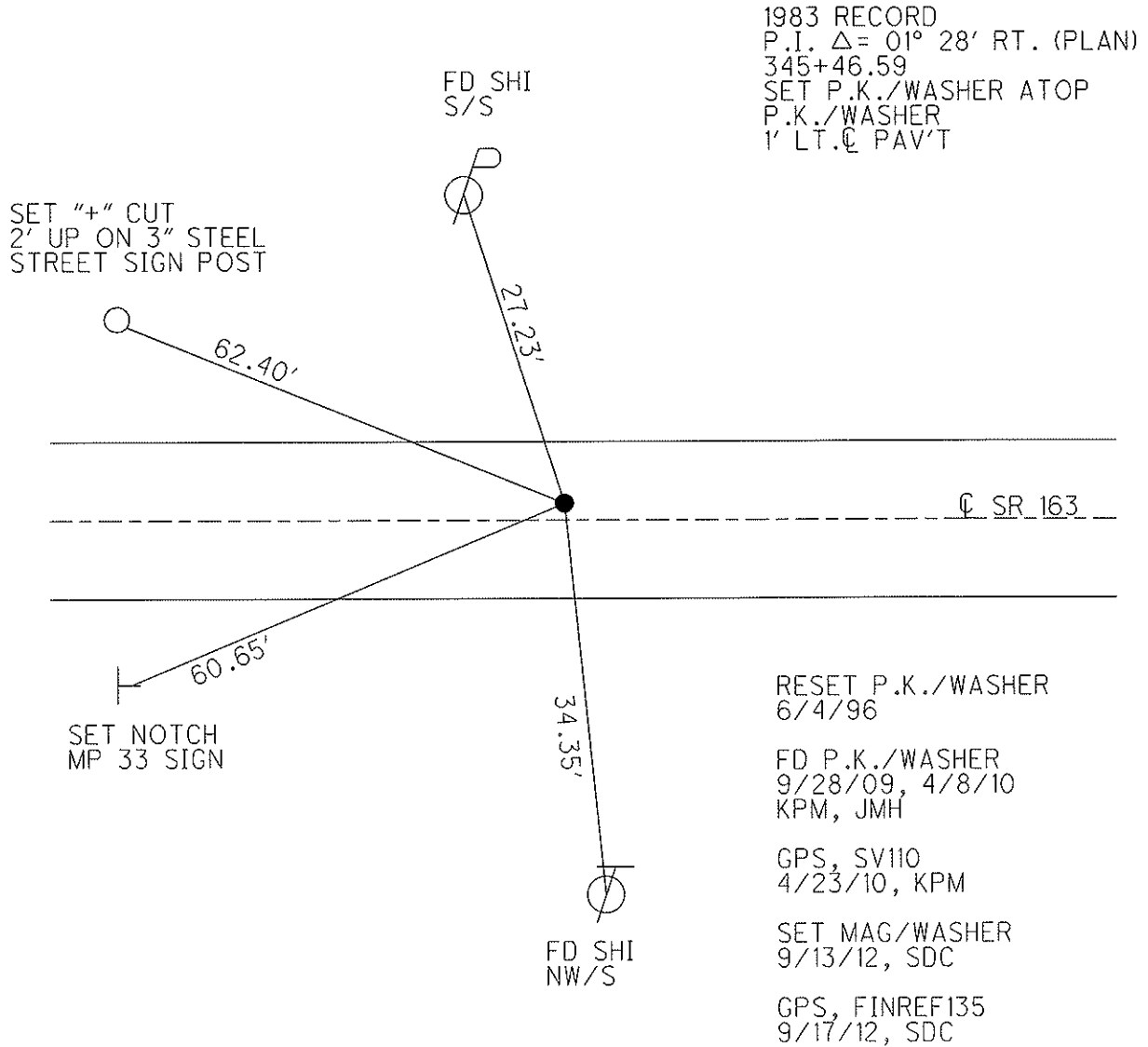
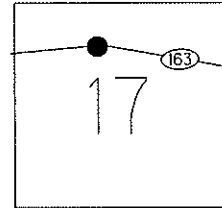


O.D.O.T. DISTRICT 2 SURVEY OFFICE (USE ONLY)

PERSONNEL	REFERENCE NO. <u>135</u>	SHEET <u>15</u> OF <u>63</u>
NOTES <u>LUMBREZER</u>	DATE <u>5/6/11</u>	ROUTE <u>SR 163</u>
H.C. <u>FINTEL</u>	WEATHER <u>CLOUDY</u>	COUNTY <u>OTTAWA</u>
R.C. <u>LUMBREZER</u>	TEMP. <u>60°</u>	TOWNSHIP <u>DANBURY</u>
		SECTION <u>2-17</u>

TYPE MONUMENT P.K./WASHER
 ON SURFACE - ~~BELOW~~ ON
 LEFT - CL PAV'T - ~~RIGHT~~ 0.7'
11.3' TO LT. EDGE PAVEMENT
 S.L.M. 1748+58

Grid: Northing: 679744.904 Easting: 1887160.894



RESET P.K./WASHER
6/4/96
 FD P.K./WASHER
9/28/09, 4/8/10
KPM, JMH
 GPS, SV110
4/23/10, KPM
 SET MAG/WASHER
9/13/12, SDC
 GPS, FINREF135
9/17/12, SDC

O.D.O.T. DISTRICT 2 SURVEY OFFICE

PERSONNEL

REFERENCE NO. 135

SHEET 16 OF 52

NOTES CANTERBURY

H.C. LOEHRKE

R.C. ROUSOS

DATE 5-18-95

WEATHER CLOUDY

TEMP. +60° F

ROUTE S.R. 163

COUNTY OTTAWA

TOWNSHIP DAWBURY

SECTION Com. WEST-RESERVE

T R

Reset

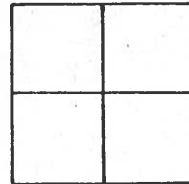
TYPE MONUMENT PK NAIL / WASHER 6-4-96

ON SURFACE - ~~BELOW~~ ON SURFACE

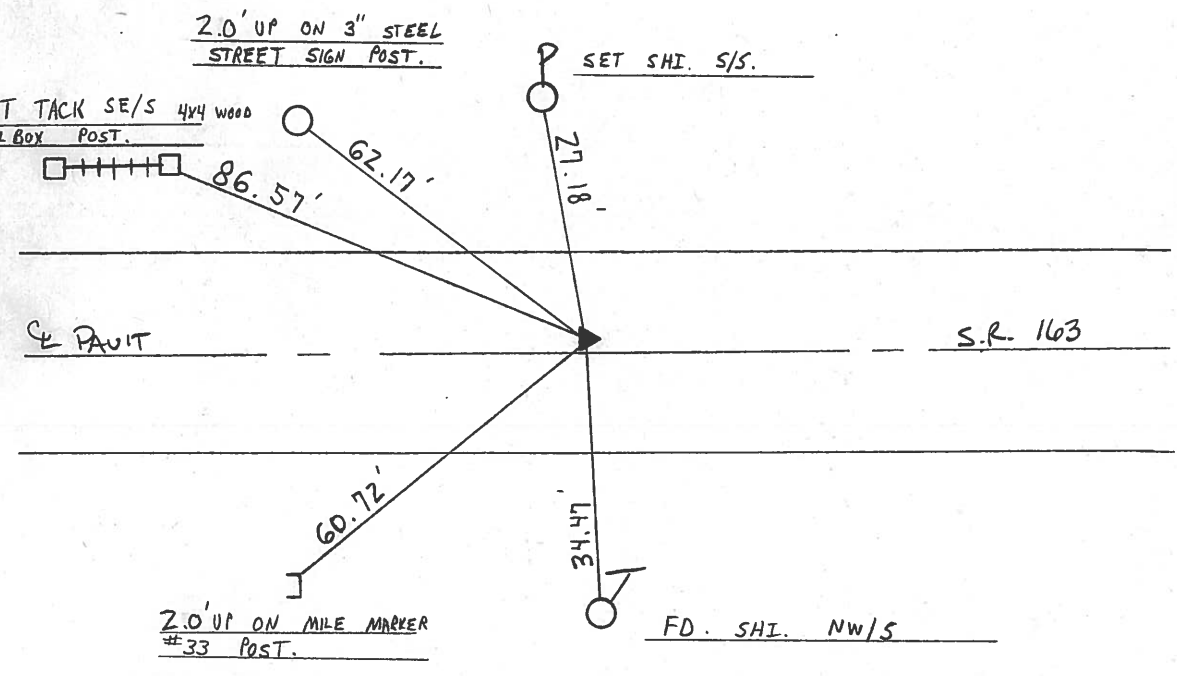
LEFT-~~☉~~ PAV'T. - RIGHT 0.7' LT. ☉

11.3' TO LT EDGE PAVEMENT

S.L.M. 1748 + 58



1983 Record
 P.I. $\Delta = 01^\circ 28' R +$ (Plan)
 345 + 46.59
 SET P.K. & WASHER ATOP
 P.K. 1' ± LT. ☉ Pavt



County Ottawa S.R. #163

Date 11/21/83

Township Danbury

Weather sunny - windy

Section _____

Temp. 50°

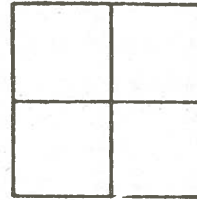
T N, R E

Personnel Cronin

Ripple

Geyman

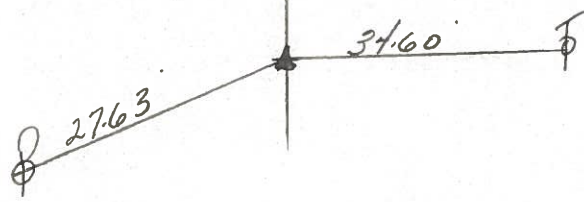
Barbour



135



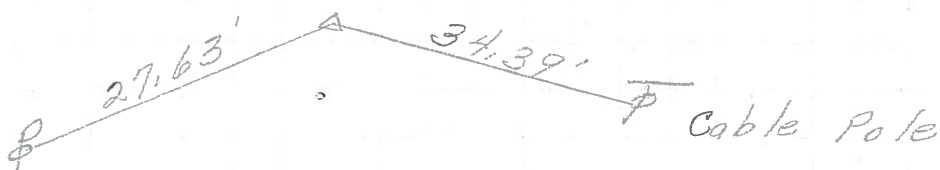
Plan
P.I. $\Delta = 01^{\circ} 28' R$
345 + 46.59
Set P.K. & washer atop
P.K. 1' \pm Lt. & Pavement



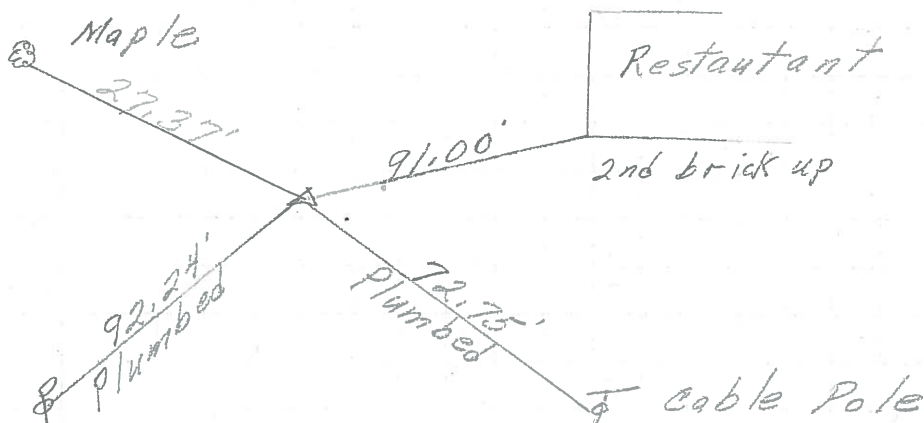
S.R. # 1637

PERSONNEL	TITLE	PERSONNEL	TITLE	COUNTY	DATE	WEATHER	TEMP.
				Ottawa	6-9-71	Sunny	70°
				S. R.	163		
				SEC.	4 & 2		
DESCRIPTION	S.R. # 269 East						
	LEFT	CENTER LINE	RIGHT				JOB NO.

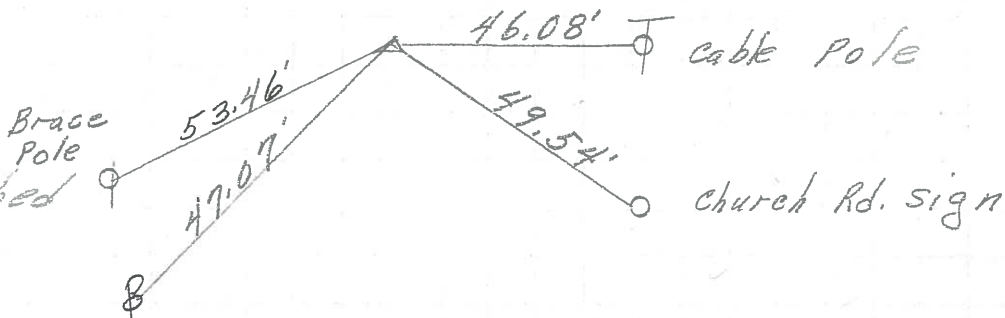
P.I. **(135)**
 345+46.91
 P.K. on surface



P.I. **(134A)**
 334+08.23
 Small spk.
 on surface



P.I. **(134)**
 315+27.53
 P.K. Nail
 on surface
 All dist. Plumbed



PERSONNEL	TITLE	PERSONNEL	TITLE	COUNTY	DATE	WEATHER	TEMP.
Schneider		Potts		Ottawa	9-10-68	Cloudy	70°
Mosser				S. R. 163			
Barbour				SEC. S.R. #269 - East			
Redding							

DESCRIPTION: Ties for Control Pts

