

## SUM-77-22.50 (PID 121920) Corridor Study

### Areas of Concern

- IR 77 NB Lane Reduction within the SR 21 interchange area
- Weave along IR 77 NB between the SR 21 interchange and the SR 18 interchange
- Weave areas within the IR 77 and SR 18 cloverleaf interchange

### Project Goals

- Mitigate congestion and crash frequency along IR 77 between SR 21 and SR 18 and within the interchange area of IR 77 and SR 18

### HSIP Rankings

| 2024 HSIP Rankings |      |      |                              |                |                         |                        |
|--------------------|------|------|------------------------------|----------------|-------------------------|------------------------|
| NLFID              | Blog | Elog | Cross Road                   | Category       | Statewide Category Rank | District Category Rank |
| SSUMIR00077**C     | 22.9 | 23.4 | N/A                          | UrbFwy         | 231                     | 7                      |
| SSUMSR00018**N     | 1.7  | 2.2  | N/A                          | SubUrb Non-Fwy | 274                     | 60                     |
| SSUMSR00018**C     | 1.3  | 1.8  | N/A                          | SubUrb Non-Fwy | 279                     | 61                     |
| SSUMSR00018**C     | 1.55 | 1.55 | Crystal Lake / Montrose West | SubUrbInt      | 47                      | 9                      |

### TOAST Rankings

| 2024 TOAST Rankings            |        |           |                    |          |                   |          |
|--------------------------------|--------|-----------|--------------------|----------|-------------------|----------|
| Segment ID                     | Score  | Category  | Statewide Rankings |          | District Rankings |          |
|                                |        |           | Overall            | Category | Overall           | Category |
| SSUMIR00077**C_22.320_23.210_R | 57.80% | UrbFwy    | 435                | 293      | 32                | 26       |
| SSUMIR00077**C_23.210_24.720_F | 65.30% | UrbFwy    | 1504               | 503      | 159               | 57       |
| SSUMIR00077**C_23.210_24.720_R | 66.00% | UrbFwy    | 1699               | 532      | 184               | 66       |
| SSUMIR00077**C_22.320_23.210_F | 67.00% | UrbFwy    | 1916               | 574      | 216               | 75       |
| SSUMIR00077**C_21.510_22.320_F | 71.50% | UrbFwy    | 3062               | 776      | 335               | 105      |
| SSUMIR00077**C_21.510_22.320_R | 73.50% | UrbFwy    | 3681               | 876      | 409               | 120      |
| SSUMSR00021**C_07.780_09.440_F | 75.30% | UrbFwy    | 4280               | 978      | 482               | 152      |
| SSUMSR00021**C_09.440_09.760_R | 75.30% | UrbFwy    | 4280               | 978      | 482               | 152      |
| SSUMSR00021**C_09.440_09.760_F | 80.50% | UrbFwy    | 6241               | 1261     | 699               | 199      |
| SSUMSR00021**C_07.780_09.440_R | 85.30% | UrbFwy    | 8342               | 1528     | 916               | 267      |
| SSUMSR00018**C_00.000_01.910_F | 59.80% | UrbNonFwy | 552                | 206      | 34                | 7        |
| SSUMSR00018**C_00.000_01.910_R | 62.80% | UrbNonFwy | 979                | 516      | 94                | 48       |
| SSUMSR00018**C_01.910_13.530_F | 63.00% | UrbNonFwy | 1007               | 529      | 102               | 54       |
| SSUMSR00018**C_01.910_13.530_R | 63.00% | UrbNonFwy | 1007               | 529      | 102               | 54       |

### Capacity Analysis

- TransModeler

### File Organization

- ProjectWise

### ODOT provided data

- CAMTool & Collision Diagrams (Expected July 2025)
- Traffic Counts (Mainline and Ramps) (Expected Summer of 2025)
- Previous Studies
  - SUM 18 Corridor Study by B&N
  - SUM 18 Draft Safety Memo by EMH&T
- Previous Plans
- Upcoming Roadway Projects
  - SUM-77-24.12 (PID 111404)

SUM-77-22.50 (PID 121920)  
Corridor Study

Anticipated IMS Study Area

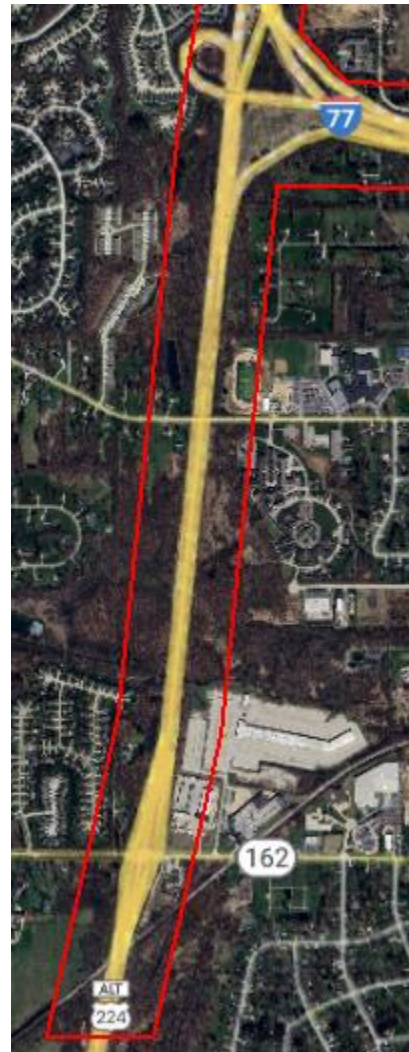
IR 77

South side of Cleveland Massillon interchange to north side of Ghent Rd interchange



SR 21

South side of SR 162 interchange to IR 77 interchange



SR 18

Heritage Woods to Flight Memorial Blvd

