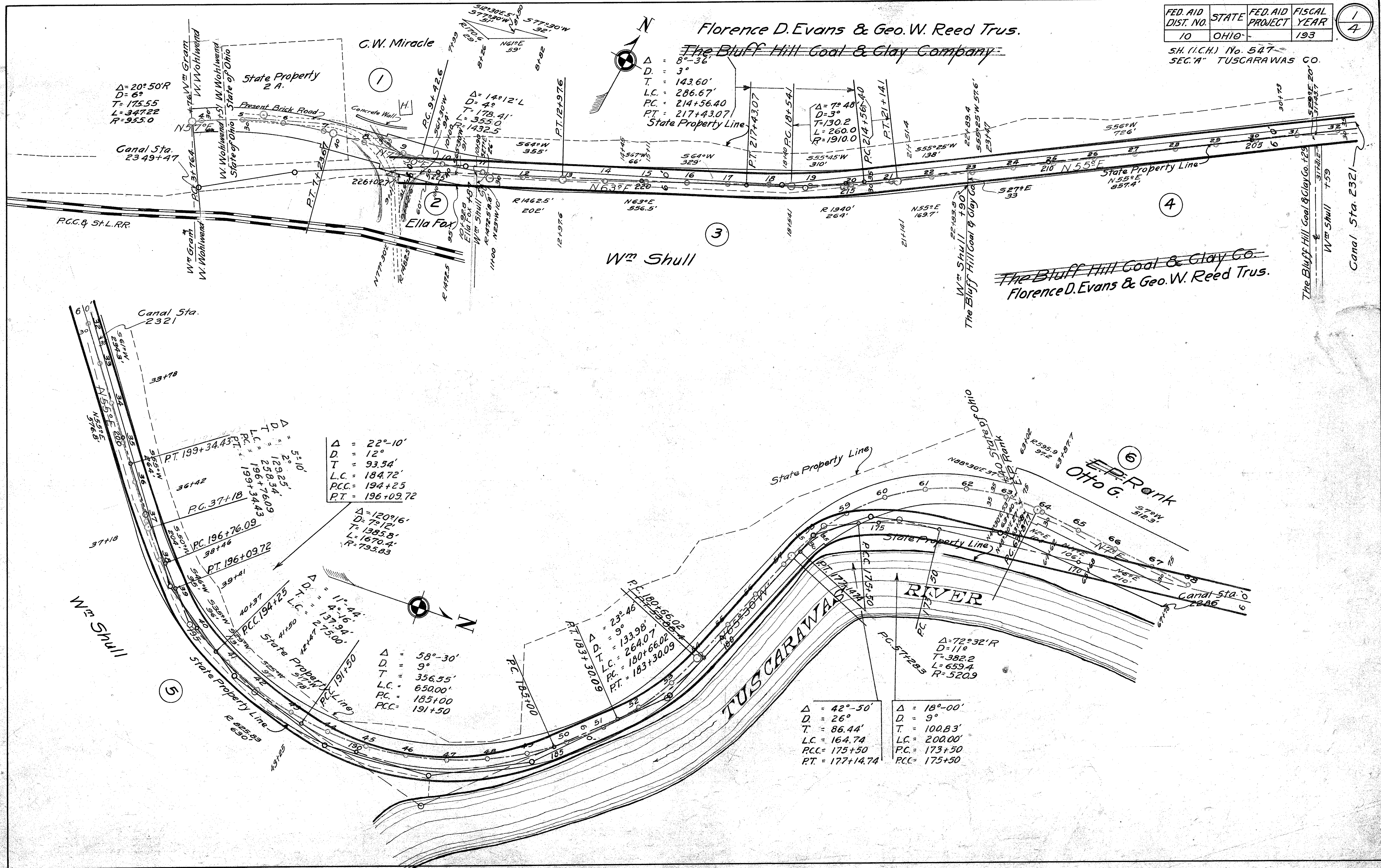


FED. AID DIST. NO.	STATE	FED. AID PROJECT	FISCAL YEAR
10	OHIO		193

1
4

SH. (I.C.H.) No. 547
SEC. A TUSCARAWAS CO.



$\Delta = 20^\circ 50'R$
 $D = 6'$
 $T = 175.55$
 $L = 347.22$
 $R = 955.0$

$\Delta = 8^\circ - 36'$
 $D = 3'$
 $T = 143.60'$
 $L.C. = 286.67'$
 $P.C. = 214+56.40$
 $P.T. = 217+43.07$
State Property Line

$\Delta = 7^\circ 48'$
 $D = 3'$
 $T = 130.2$
 $L = 260.0$
 $R = 1910.0$

$\Delta = 22^\circ - 10'$
 $D = 12'$
 $T = 93.54'$
 $L.C. = 184.72'$
 $P.C. = 194+25$
 $P.T. = 196+09.72$

$\Delta = 120^\circ 16'$
 $D = 7^\circ 12'$
 $T = 1385.8'$
 $L = 1670.4'$
 $R = 795.83$

$\Delta = 58^\circ - 30'$
 $D = 9'$
 $T = 356.55'$
 $L.C. = 650.00'$
 $P.C. = 185+00$
 $P.C.C. = 191+50$

$\Delta = 23^\circ 46'$
 $D = 9'$
 $T = 133.98'$
 $L.C. = 264.07'$
 $P.C. = 180+66.02$
 $P.T. = 183+30.09$

$\Delta = 42^\circ - 50'$
 $D = 26'$
 $T = 86.44'$
 $L.C. = 164.74$
 $P.C. = 175+50$
 $P.T. = 177+14.74$

$\Delta = 18^\circ - 00'$
 $D = 9'$
 $T = 100.83'$
 $L.C. = 200.00'$
 $P.C. = 173+50$
 $P.C.C. = 175+50$

~~The Bluff Hill Coal & Clay Co.~~
Florence D. Evans & Geo. W. Reed Trus.

Canal Sta. 2321

Canal Sta. 2347

Canal Sta. 2321

Canal Sta. 2321

4

3

6

5

OTO G.
STATION 512.3

Canal Sta. 2321

Canal Sta. 2321

Canal Sta. 2321

Canal Sta. 2321

Canal Sta. 2321

Canal Sta. 2321

Canal Sta. 2321

Canal Sta. 2321

Canal Sta. 2321

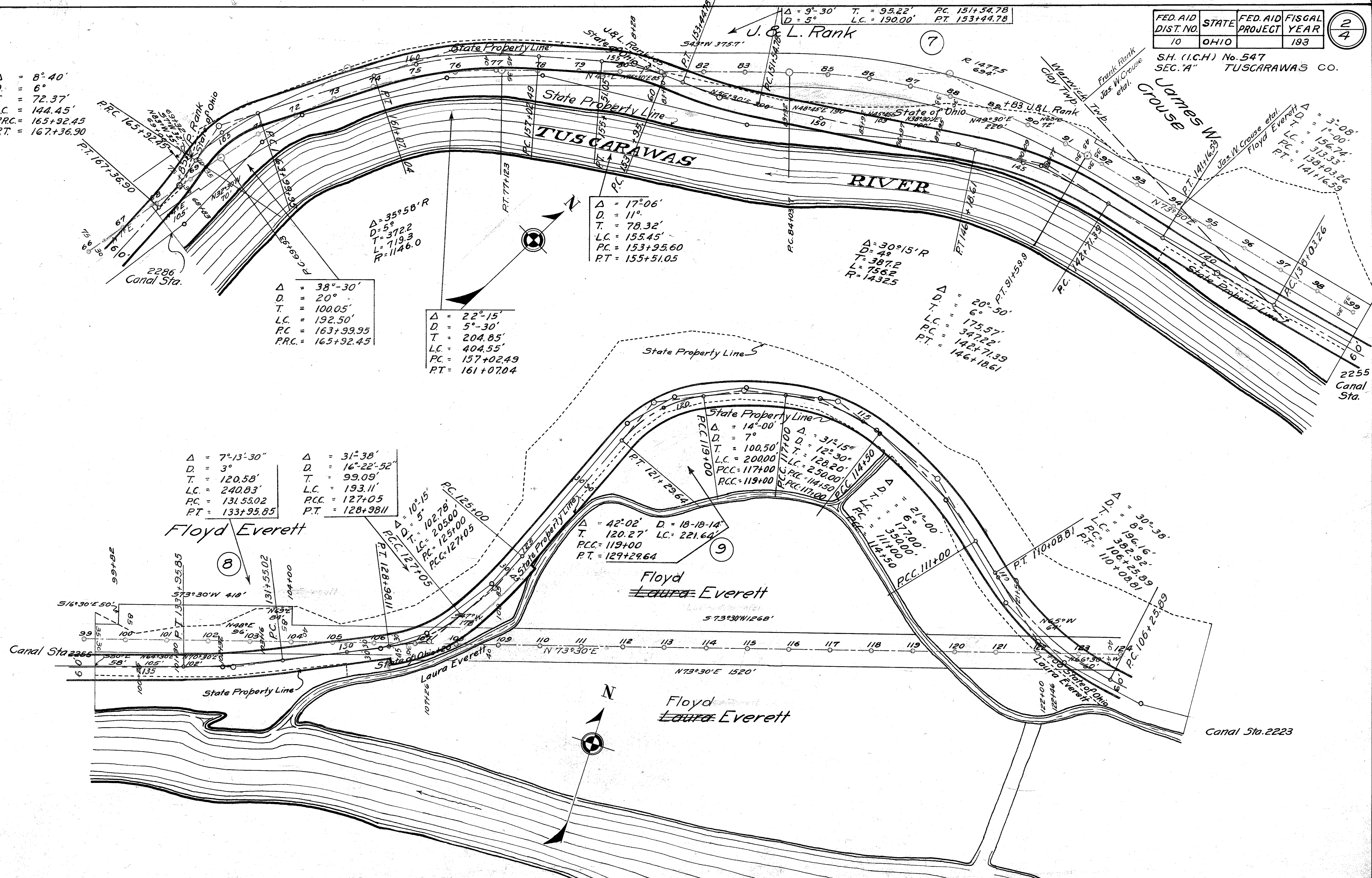
Canal Sta. 2321

Canal Sta. 2321

FED. AID DIST. NO.	STATE	FED. AID PROJECT	FISCAL YEAR
10	OHIO		193

S.H. (I.C.H.) No. 547
SEC. "A" TUSCARAWAS CO.

$\Delta = 8^{\circ}40'$
 $D = 6'$
 $T = 72.37'$
 $L.C. = 144.45'$
 $P.R.C. = 165+92.45$
 $P.T. = 167+36.90$



$\Delta = 38^{\circ}-30'$
 $D = 20'$
 $T = 100.05'$
 $L.C. = 192.50'$
 $P.C. = 163+99.95$
 $P.R.C. = 165+92.45$

$\Delta = 22^{\circ}-15'$
 $D = 5^{\circ}-30'$
 $T = 204.85'$
 $L.C. = 404.55'$
 $P.C. = 157+02.49$
 $P.T. = 161+07.04$

$\Delta = 17^{\circ}-06'$
 $D = 11'$
 $T = 78.32'$
 $L.C. = 155.45'$
 $P.C. = 153+95.60$
 $P.T. = 155+51.05$

$\Delta = 30^{\circ}-15'R$
 $D = 49'$
 $T = 387.2$
 $L = 756.2$
 $R = 1432.5$

$\Delta = 20^{\circ}-50'$
 $D = 6'$
 $T = 175.57'$
 $L.C. = 347.22'$
 $P.C. = 142+71.39$
 $P.T. = 146+18.61$

$\Delta = 7^{\circ}-13'-30''$
 $D = 3'$
 $T = 120.58'$
 $L.C. = 240.83'$
 $P.C. = 131.55.02$
 $P.T. = 133+95.85$

$\Delta = 31^{\circ}-38'$
 $D = 16^{\circ}-22'-52''$
 $T = 99.09'$
 $L.C. = 193.11'$
 $P.C.C. = 127+05$
 $P.T. = 128+98.11$

$\Delta = 42^{\circ}-02'$
 $D = 18-18-14'$
 $T = 120.27'$
 $L.C. = 221.64'$
 $P.C.C. = 119+00$
 $P.T. = 129+29.64$

$\Delta = 14^{\circ}-00'$
 $D = 7'$
 $T = 100.50'$
 $L.C. = 200.00'$
 $P.C.C. = 117+00$
 $P.C. = 119+00$

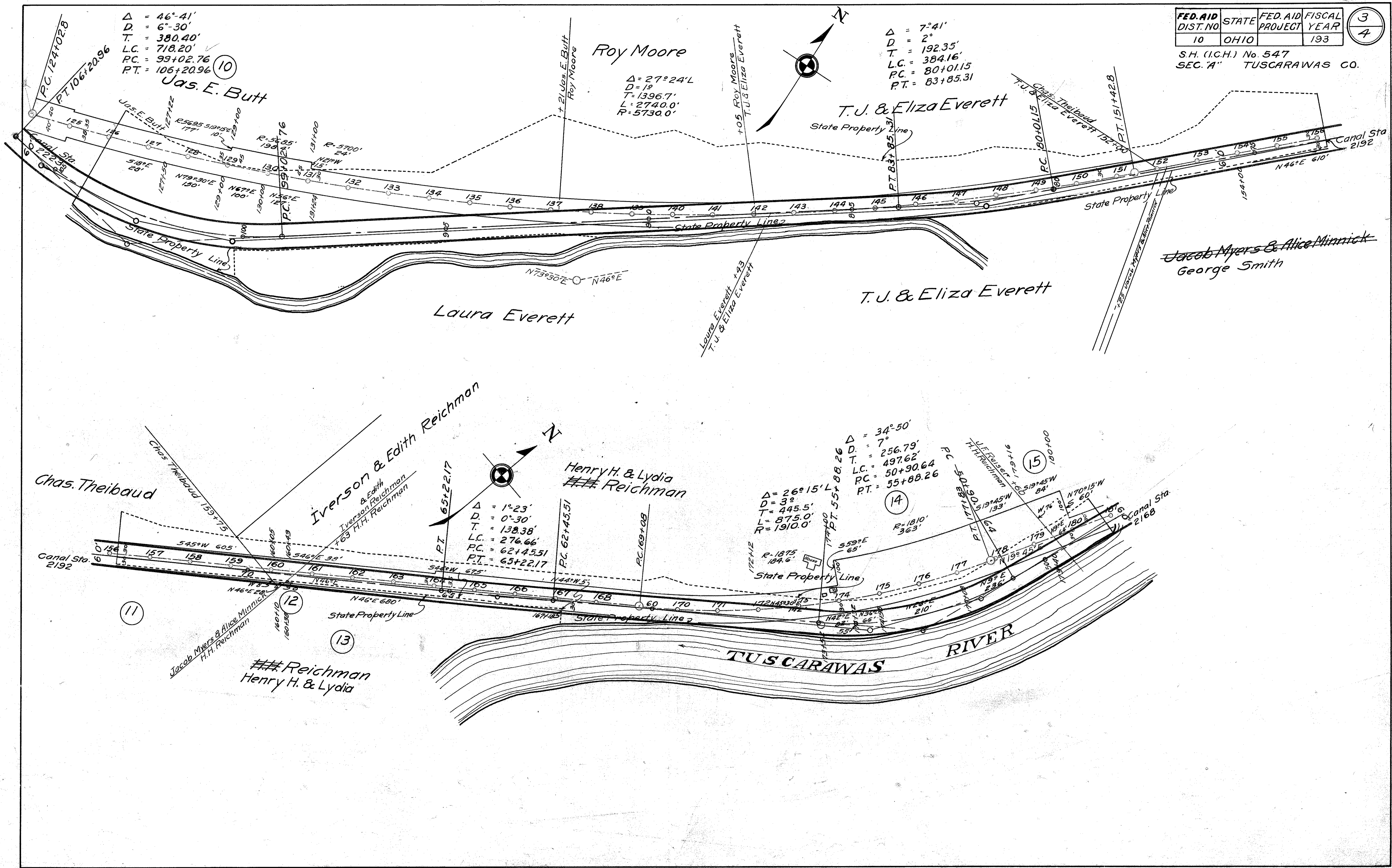
$\Delta = 31^{\circ}-15'$
 $D = 12^{\circ}-30'$
 $T = 128.20'$
 $L.C. = 250.00'$
 $P.C. = 114.50$
 $P.C. = 117.00$

$\Delta = 30^{\circ}-38'$
 $D = 8'$
 $T = 196.16'$
 $L.C. = 382.92'$
 $P.C. = 106+25.89$
 $P.T. = 110+08.81$

FED. AID DIST. NO	STATE	FED. AID PROJECT	FISCAL YEAR
10	OHIO		193

S.H. (I.C.H.) No. 547
SEC. "A" TUSCARAWAS CO.

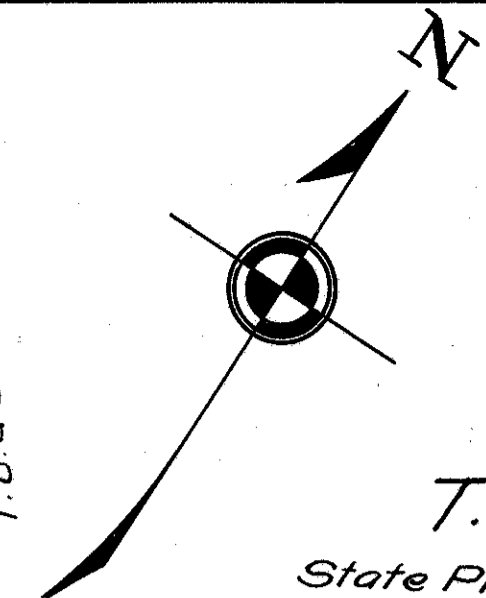
3
4



$\Delta = 46^\circ 41'$
 $D = 6^\circ 30'$
 $T = 380.40'$
 $L.C. = 718.20'$
 $P.C. = 99+02.76$
 $P.T. = 106+20.96$

Roy Moore
 $\Delta = 27^\circ 24' L$
 $D = 1^\circ$
 $T = 1396.7'$
 $L = 2740.0'$
 $R = 5730.0'$

$\Delta = 7^\circ 41'$
 $D = 2^\circ$
 $T = 192.35'$
 $L.C. = 384.16'$
 $P.C. = 80+01.15$
 $P.T. = 83+85.31$



Chas. Theibaud

Iverson & Edith Reichman
H.H. Reichman

Henry H. & Lydia Reichman

$\Delta = 26^\circ 15' L$
 $D = 3^\circ$
 $T = 445.5'$
 $L = 875.0'$
 $R = 1910.0'$

$\Delta = 34^\circ 50'$
 $D = 7^\circ$
 $T = 256.79'$
 $L.C. = 497.62'$
 $P.C. = 50+90.64$
 $P.T. = 55+88.26$

11

12

13

14

15

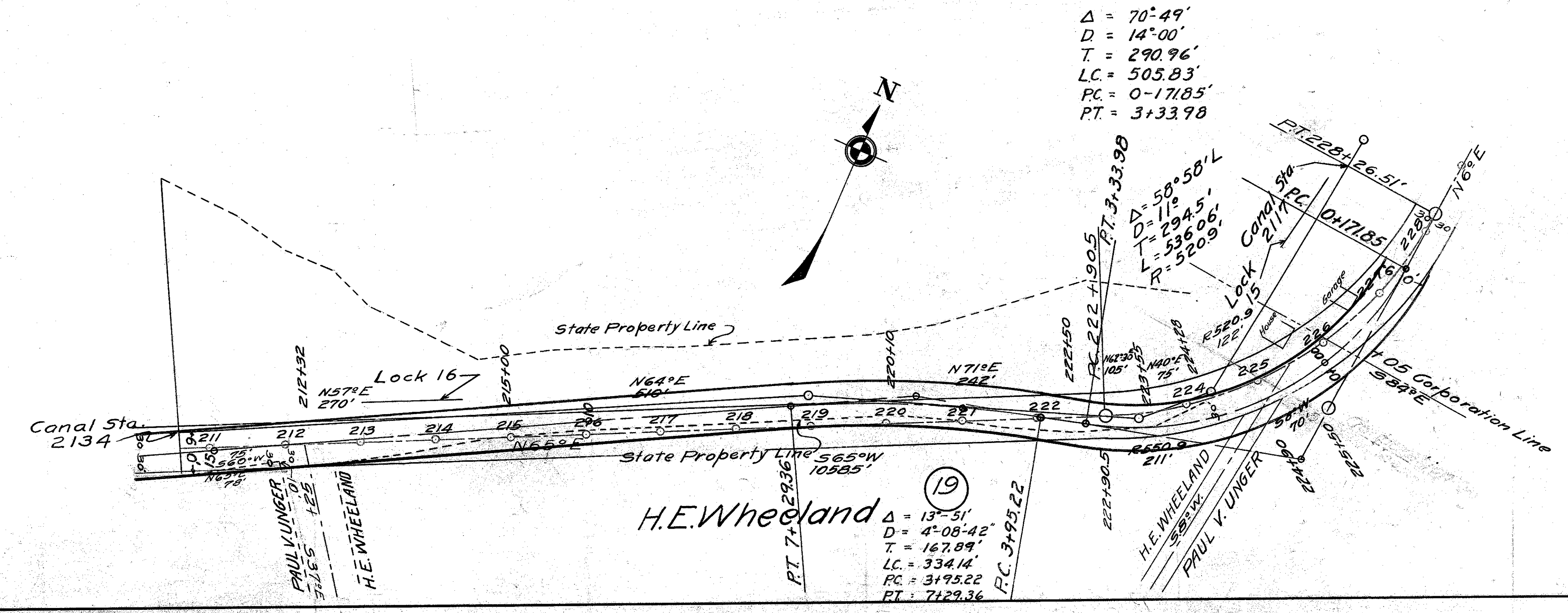
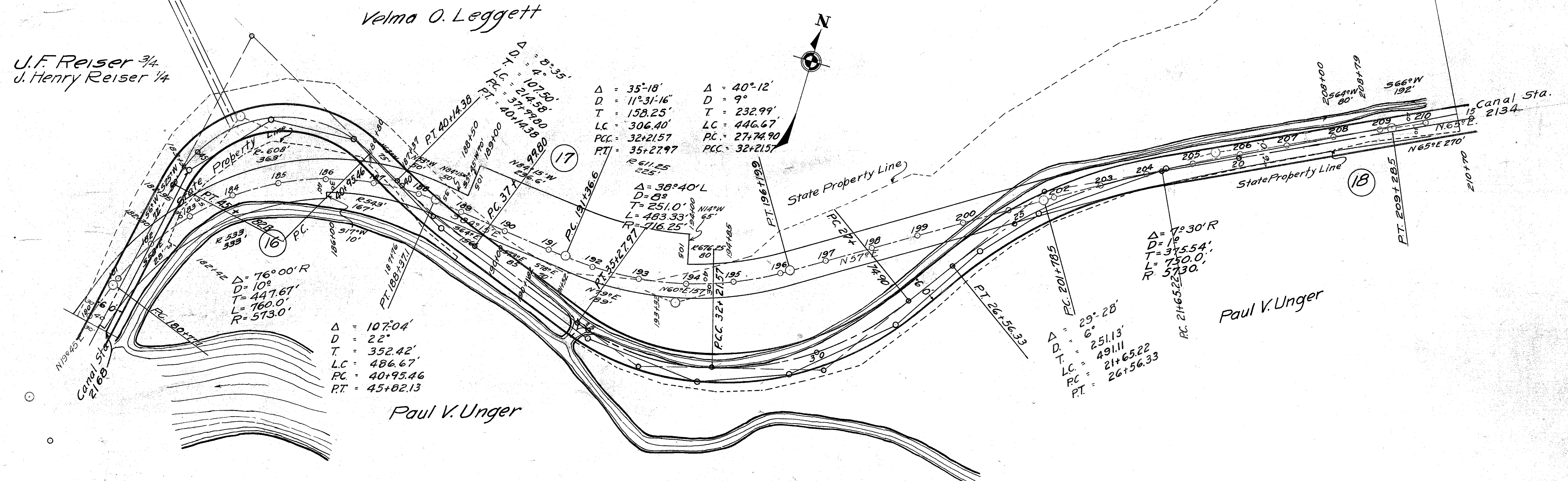
Jacob Myers & Alice Minnick
H.H. Reichman

Henry H. & Lydia Reichman

TUSCARAWAS RIVER

Jacob Myers & Alice Minnick
George Smith

S.H. (I.C.H.) No. 547
SEC. "A" TUSCARAWAS CO.



117
212