

B.M.-2UF-6, PT. "C" ELEV. 636.977
L.H.F.T. 17.5' WALK OF LAKELAND BLVD.
APPROX. 27 H.S. OF C.L. OF LAKELAND 1941 N.W.
OF C.L. OF E. 2367.5' (PRODUCED S.E. 17928 FT.
S.W. OF TOP AND CENTER OF HYD. DIV. OF
LAKELAND 1941 FT. S.W. OF N.W. 1/4 SEC. 8-01
POLE #126693 ON S. SIDE OF LAKELAND.

FOR PAVEMENT DETAILS & ELEVATIONS
SEE SHEET NO. 366967

CFN 1971574
SLM XX, 12"
SEE BELOW

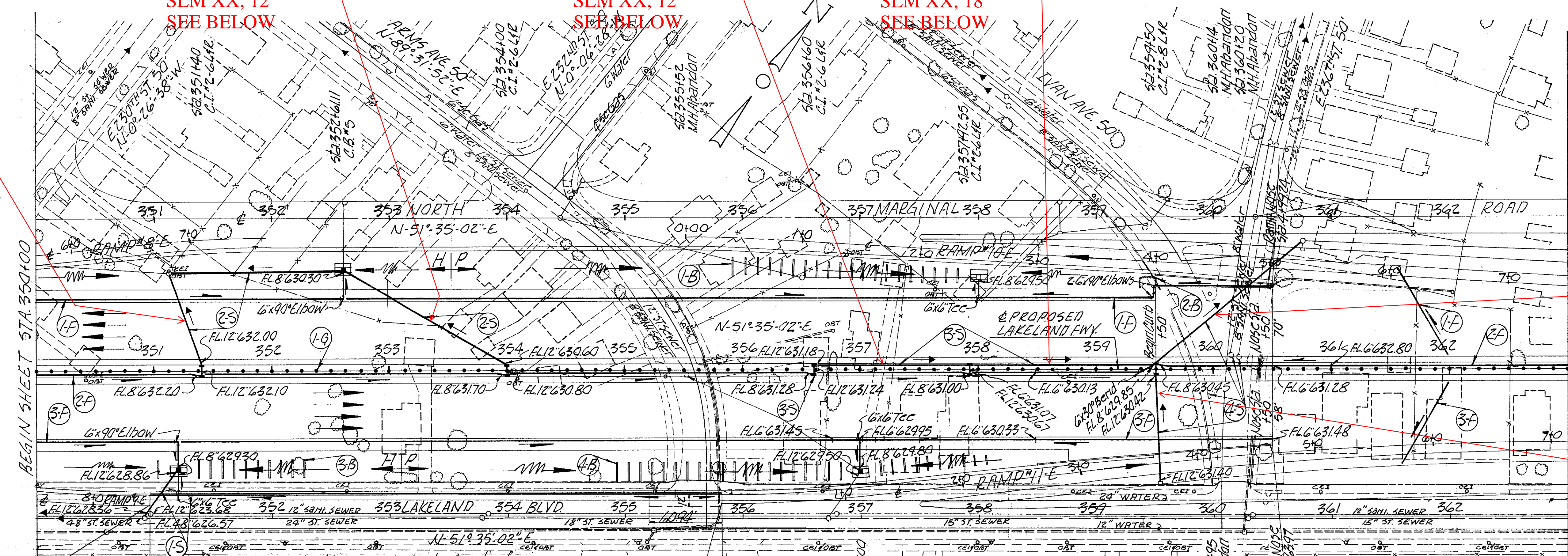
CFN 1971567
SLM XX, 12"
SEE BELOW

CFN 1971566
SLM XX, 12"
SEE BELOW

CFN 1971566
SLM XX, 18"
SEE BELOW

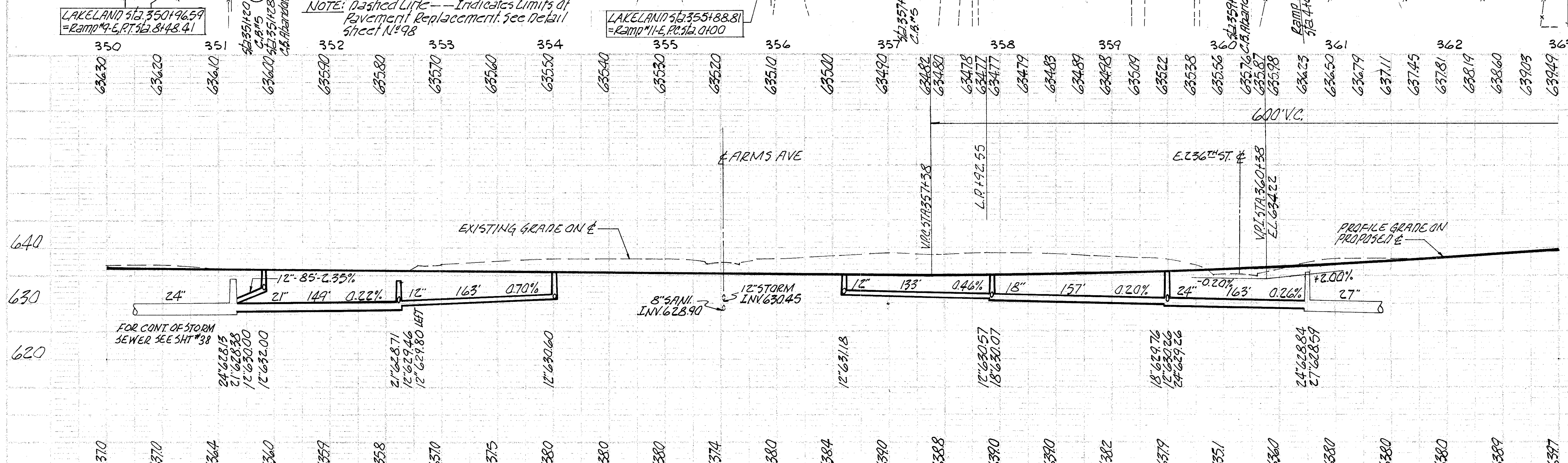
CFN 1971583
SLM XX, 24"
SEE BELOW

CFN 1971584
SLM XX, 12"
SEE BELOW



ITEM No	STATION FROM TO	SIDE	LENGTH x WIDTH		TOTAL
			FOOT	INCH	
1-B	355+93	R	357	183	53
2-B	354+40	R	359	150	70
3-B	351+03	R	352	127	29
4-B	354+93	R	358	106	72
TOTAL					164

ITEM No	STATION FROM TO	SIDE	UNDER DRAIN		TOTAL
			INLET	OUTLET	
1-F	350+00	R	362	100	20
2-F	350+00	R	363	100	20
3-F	350+00	R	362	100	20
4-F	351+00	R	355	57	494
TOTAL					393



ITEM No	STATION		SIDE	I-15 LIN. FT. STEEL BEAM TYPE (DEEP STD. DWG #2-A) BARRIER DESIGN
	FROM	TO		
1-G	350+00	363+00	R	1300.00
TOTAL				

STA 350+00 TO STA. 360+00
EXCAVATION 34,353 CU.YDS.
EMBANKMENT 84 CU.YDS.
EMBANKMENT+22% 102 CU.YDS.

ITEM No	STATION		SIDE	I-2 LIN. FT. UNDER PAVT.		I-8 EACH			I-16 EACH		LOCATION OF STRUCTURE		
	FROM	TO		12" CLB	24" CLB	STD. C.B. #5	STD. C.I. #26	STD. C.I. #28	M.H.	C.B.			
1-3	350+92	351+28	R								351+20; #28		
2-3	351+12	354+00	R	12	146	1	4				351+40; 352+61; 354+00		
3-3	355+52	359+50	R	143	155	1	4				355+52; 356+60; 357+92; 358		
4-3	359+50	360+75	R	6				2	2	1	359+50; #195; 360+14; #120		
TOTAL				161	155	146	382	160	3	8	2	3	2

PLAN & PROFILE---MAIN LINE---STA. 350+00 TO STA. 363+00